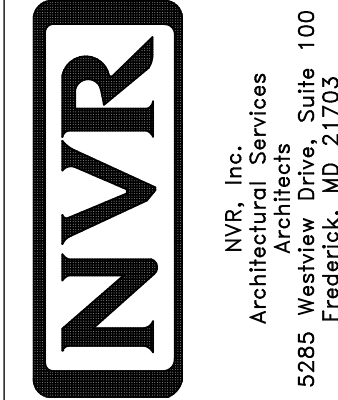


**1 PLUMBING PLAN**

SCALE: 1/4" = 1'-0"

A-5

SHEET NO. <b>A-5</b>	MODEL <b>PISA TORRE</b>	SET NO. PSTCO
OPTION DESCRIPTION <b>31</b>	DRAWING TITLE <b>PLUMBING PLAN</b>	VERSION <b>02</b>
	DATE:	DRAWN BY:
	OPTION:	



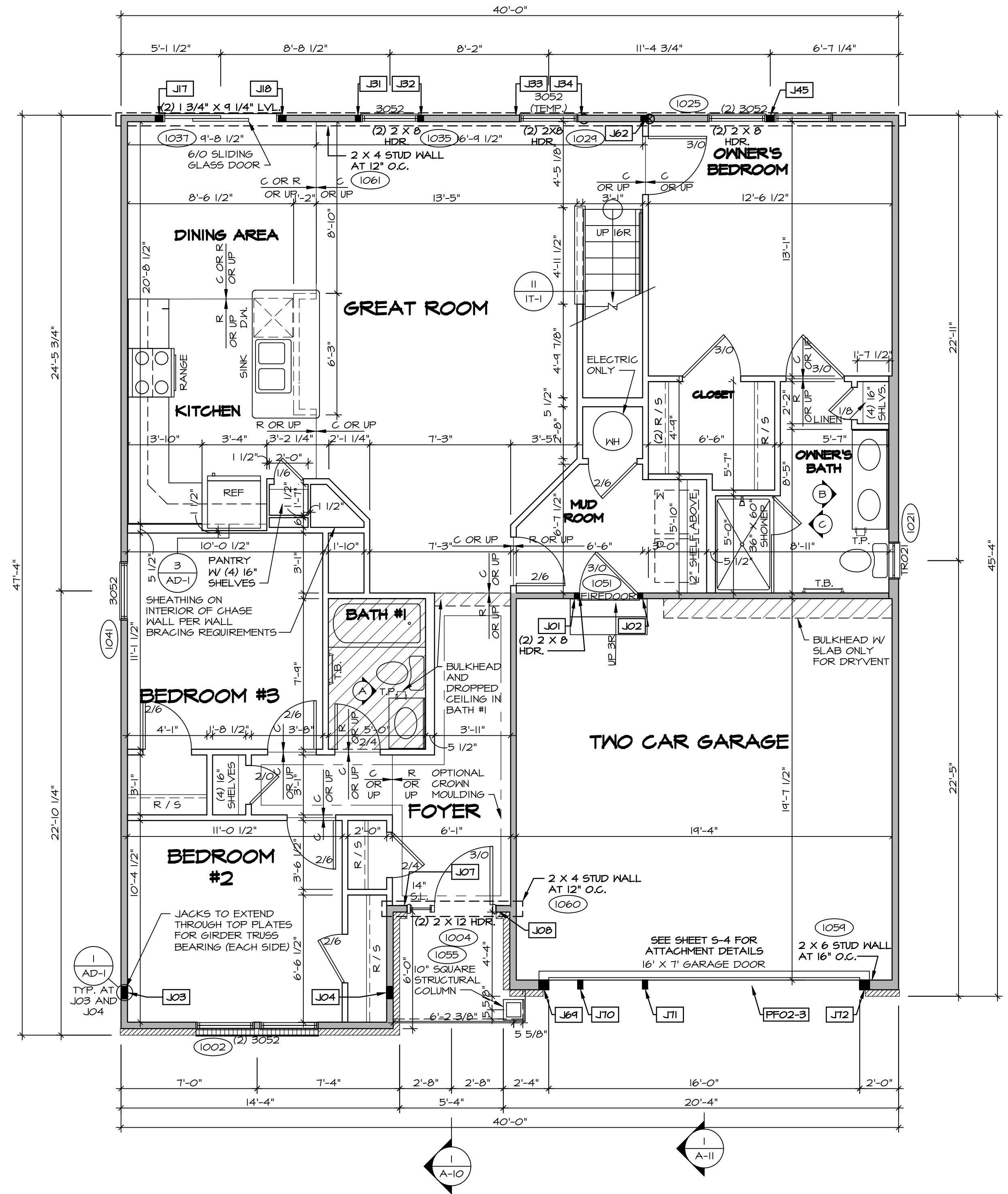
NVR, Inc., owner, expressly reserves its copyright in these plans. These plans are not to be reproduced, changed, copied, or otherwise used in any way without the prior written consent of NVR, Inc.

REV. NO. DATE

REMARKS

FIRST FLOOR JACK SCHEDULE				
IDENTIFIER	DESCRIPTION	OPTIONS	ENG. NUM.	REMARKS
J01	JACK - (2) 2X4 SPF STUD GRADE		1051 / 1050	
J02	JACK - (2) 2X4 SPF STUD GRADE		1051 / 1050	
J03	JACK - (5) 2X4 SPH	SXC	1051	STEEL PLATE
J04	JACK - (5) 2X4 SPH	SXC	1051	STEEL PLATE
J07	JACK - (3) 2X4 SPF STUD GRADE	BTU / SXC	1004	
J08	JACK - (3) 2X4 SPF STUD GRADE	BTU / SXC	1004	
J17	JACK - (3) 2X4 SPF STUD GRADE	DGT / BTU / SXC	1031	
J18	JACK - (3) 2X4 SPF STUD GRADE	DGT / BTU / SXC	1031	
J31	JACK - (2) 2X4 SPF STUD GRADE	ZUD / BTU / SXC	1035	
J32	JACK - (2) 2X4 SPF STUD GRADE	ZUD / BTU / SXC	1035	
J34	JACK - (3) 2X4 SPF STUD GRADE	ZUD / BTU / SXC	1024 / 1050	
J45	JACK - (3) 2X4 SPF STUD GRADE	ZFC / ZMR / SXC / BTU	1025	
J62	JACK - (3) 2X4 SPF STUD GRADE	BTU	1050	
J64	JACK - (4) 2X6 SPF STUD GRADE	GCB / BTU / SXC	1008	
J70	JACK - (2) 2X6 SPF STUD GRADE	GCB / BTU / SXC	1058	
J71	JACK - (2) 2X6 SPF STUD GRADE	GCB / BTU / SXC	1058	
J72	JACK - (4) 2X6 SPF STUD GRADE	GCB / BTU / SXC	1008	

LEGEND	
	BEARING WALL
	NON BEARING WALL
	INDICATES BEARING FROM POINT-LOAD ABOVE
	JACKS
	BEAM/HEADER
	PAD FOOTING
	STEEL COLUMN
	PORTAL FRAME
	JOIST/TRUSS
	LVL
	ENGINEERING PAGE NUMBER
SEE FC DETAILS FOR FRAMING CONNECTORS	



LVL PLY TO PLY FASTENING SCHEDULE:	
1.A	(2) PLY UP TO AND INCLUDING 1 1/8" TALL; FASTEN PLYS W/ (2) ROWS 16D NAILS AT 12" O.C.
2.A	(2) PLY 1 1/2" TO AND 18" TALL (INCLUSIVE); FASTEN PLYS W/ (3) ROWS 16D NAILS AT 12" O.C.
3.A	(2) PLY 20" TALL AND OVER; FASTEN PLYS W/ (4) ROWS 16D NAILS AT 12" O.C.
4.A	(3) PLY UP TO AND INCLUDING 1 1/8" TALL; FASTEN PLYS W/ (2) ROWS 16D NAILS AT 12" O.C. FROM EACH SIDE
5.A	(3) PLY 1 1/2" TO AND 18" TALL (INCLUSIVE); FASTEN PLYS W/ (3) ROWS 16D NAILS AT 12" O.C. FROM EACH SIDE
6.A	(3) PLY 20" TALL AND OVER; FASTEN PLYS W/ (4) ROWS 16D NAILS AT 12" O.C. FROM EACH SIDE

FIELD INSTALLED FIRST FLOOR BEAM/HEADER SCHEDULE					
IDENTIFIER	DESCRIPTION	LENGTH	OPTIONS	ENG. NUM.	REMARKS
PF02-3	LVL - 18	19'-4"	GCB / BTU / SXC	1008	3 PLY, 5A

- #### FLOOR PLAN NOTES
- ALL HEADERS ARE (2) 2x6 W/ 2x4 WALLS OR (3) 2x6 W/ 2x6 WALLS, UNLESS OTHERWISE NOTED.
  - ALL HEADERS TO HAVE (1) 2x4 OR 2x6 JACK EACH END, UNLESS OTHERWISE NOTED.
  - ALL EXTERIOR WALLS TO BE 4" AND ALL INTERIOR WALLS TO BE 3 1/2", UNLESS OTHERWISE NOTED.
  - HATCHED AREAS INDICATE DROPPED CEILINGS. ALL DROPPED CEILINGS ARE 12' UNLESS OTHERWISE NOTED.
  - SEE "BRACED WALL PANEL DETAIL SHEET" FOR SPECIAL WALL FRAMING LOCATIONS AND HEADER SIZES, IF APPLICABLE.
  - SEE STANDARD DETAIL CATEGORY "IT" SHEET(S) FOR INTERIOR TRIM DETAILS.
  - SEE ARCHITECTURAL DETAIL SHEET "AD" FOR HOUSE SPECIFIC INTERIOR TRIM OPTION TABLE.
  - ALL WINDOWS HAVE T-0 1/2" HEADER HEIGHT UNLESS OTHERWISE NOTED.

- #### GYPSUM NOTES
- AT GARAGE:  
 GYPSUM BOARD AT COMMON WALLS, CEILING, BEAM WRAPS AND SUPPORTS PER STANDARD DETAIL FA-10(b) FIRE ASSEMBLIES OR AS REQUIRED BY LOCAL CODE.
- AT STAIRS:  
 1/2" GYPSUM BOARD AT UNDERSIDE OF STAIRS AND WALLS IN CLOSET
- BASEMENT WITH 1-JOIST FLOOR SYSTEM ABOVE:  
 WITH OPTION "SG1" - DRYWALL UNFINISHED BASEMENT CEILING AREA
- #### NOTES:
- 1/2" GYPSUM WALL BOARD REQUIRED ON CEILING IN UNFINISHED AREAS WHEN NO SPRINKLER SYSTEM IS INSTALLED
  - A MAXIMUM AREA OF 80 SQ FT MAY BE OMITTED AS NEEDED FOR INSTALLATION OF PLUMBING, ELECTRICAL, AND/OR HVAC (TYPICALLY AN 8'-0"x9'-0" CEILING SPACE ABOVE MECHANICAL AREA).
  - PROVIDE FIRE BLOCKING AS REQUIRED AT PERIMETER OF ANY AREAS WHERE DRYWALL HAS BEEN OMITTED.

## FIRST FLOOR PLAN

SCALE: 1/4" = 1'-0"

REV. NO.	DATE	DESCRIPTION	REMARKS
1	05/15/19	DRWING ALIGNMENT	

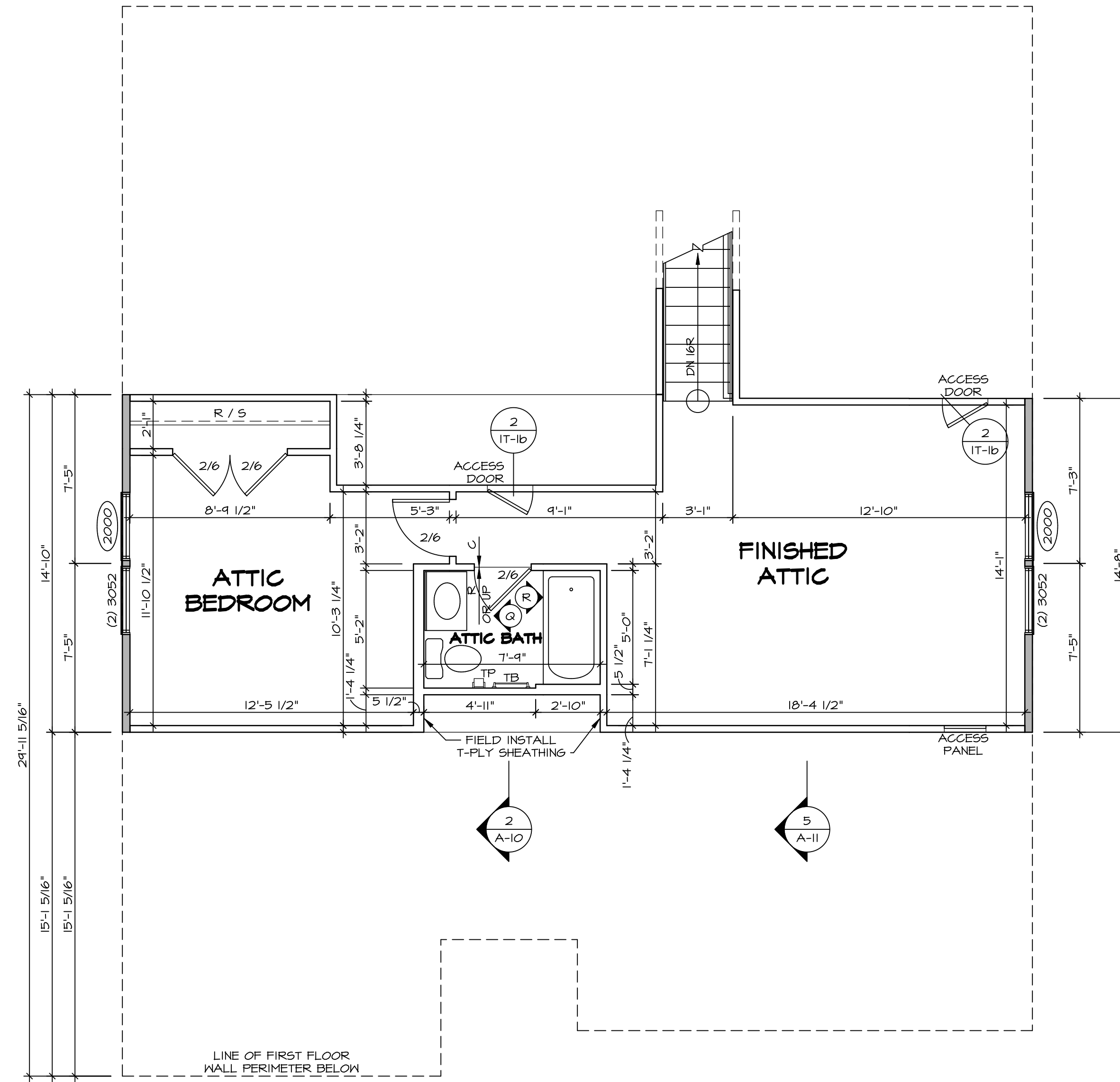
---

SET NO. PSTCO VERSION 02 DRAWN BY DATE: OPTION	MODEL <b>PISA TORRE</b> DRAWING TITLE <b>FIRST FLOOR PLAN</b> OPTION DESCRIPTION <b>CORNERSTONE SPECIFICATIONS</b>	SHEET NO. <b>A-7</b>	REV. NO. <b>36</b>
--	---	-------------------------	-----------------------

---

NVR, Inc., Architectural Services  
 5285 Washington Blvd, Suite 100  
 Frederick, MD 21703

C:\NVR\Solves\PIISA\_TORRE\_PSTCO\_02\DCY-AK-0078\12300808\Sheet\Lot\_Spec\156-A-7-PLAN-SXC-LS.dwg\_05/15/19 - 10:32 am



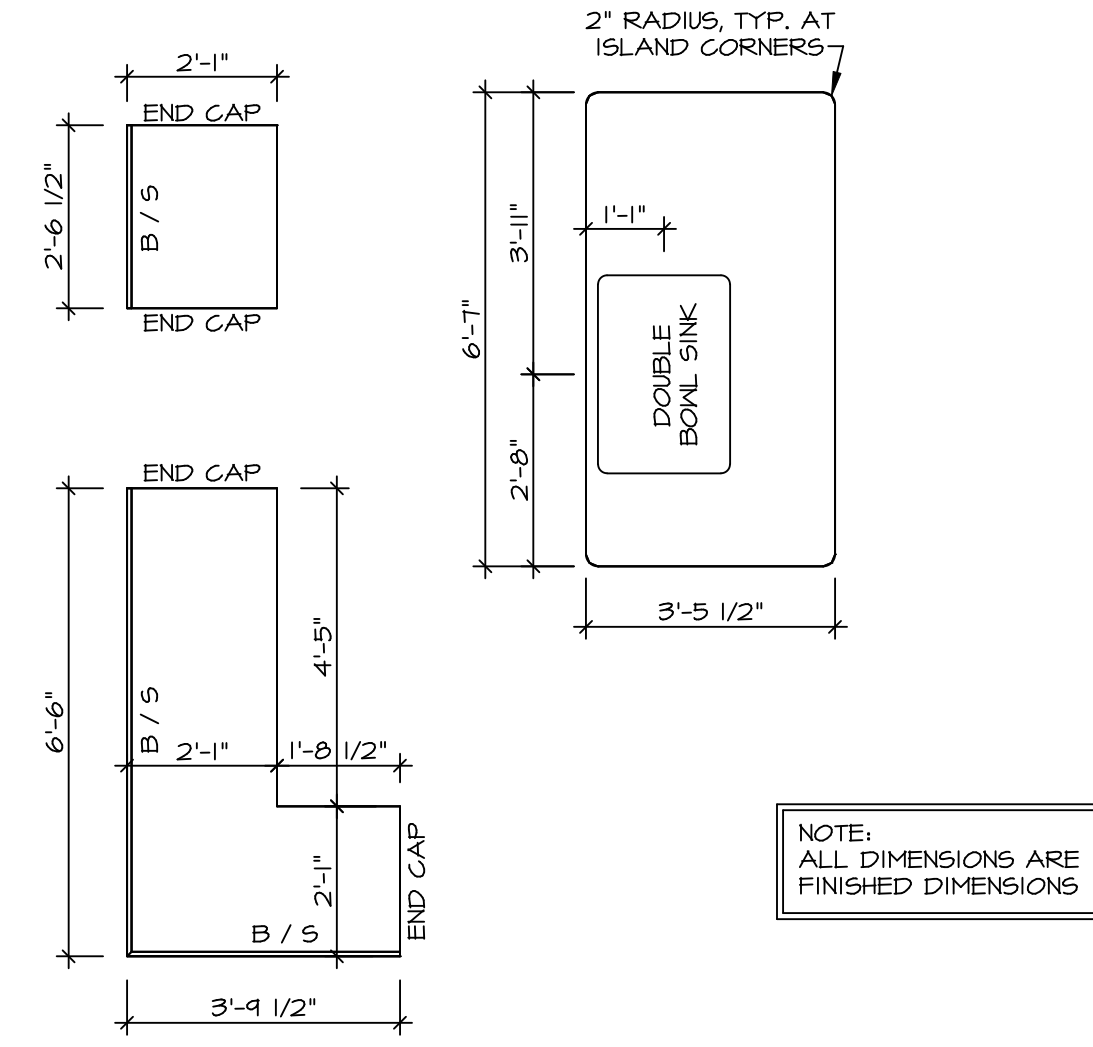
**1**  
A-9 **SECOND FLOOR PLAN**  
SCALE: 1/4" = 1'-0"

LEGEND	
	BEARING WALL
	NON BEARING WALL
	INDICATES BEARING FROM POINT-LOAD ABOVE JACKS
	JACKS
	BEAM/HEADER
	PAD FOOTING
	STEEL COLUMN
	PORTAL FRAME
	JOIST/TRUSS
	LVL
	ENGINEERING PAGE NUMBER

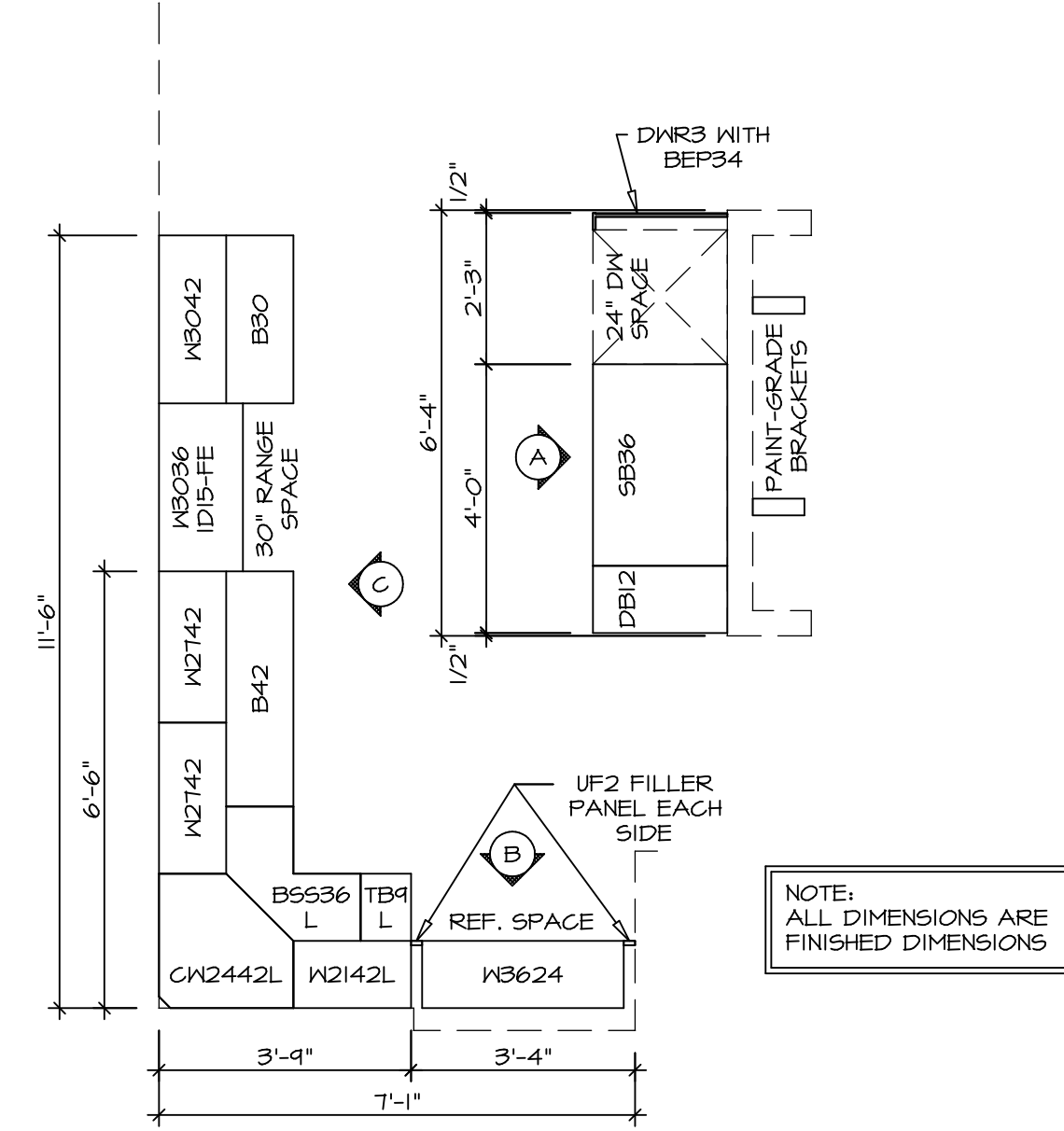
SEE FC DETAILS FOR FRAMING CONNECTORS

- FLOOR PLAN NOTES**
1. ALL HEADERS ARE (2) 2x6 w/ 2x4 WALLS OR (3) 2x6 w/ 2x6 WALLS, UNLESS OTHERWISE NOTED.
  2. ALL HEADERS TO HAVE (1) 2x4 OR 2x6 JACK EACH END, UNLESS OTHERWISE NOTED.
  3. ALL EXTERIOR WALLS TO BE 4" AND ALL INTERIOR WALLS TO BE 3 1/2", UNLESS OTHERWISE NOTED.
  4. HATCHED AREAS INDICATE DROPPED CEILINGS. ALL DROPPED CEILINGS ARE 12" UNLESS OTHERWISE NOTED.
  5. SEE BRACED WALL PANEL DETAIL SHEET FOR SPECIAL WALL FRAMING LOCATIONS AND HEADER SIZES, IF APPLICABLE.
  6. SEE STANDARD DETAIL CATEGORY "IT" SHEET(S) FOR INTERIOR TRIM DETAILS.
  7. SEE ARCHITECTURAL DETAIL SHEET "AD" FOR HOUSE SPECIFIC INTERIOR TRIM OPTION TABLE.
  8. ALL WINDOWS HAVE 7'-0 1/2" HEADER HEIGHT UNLESS OTHERWISE NOTED.

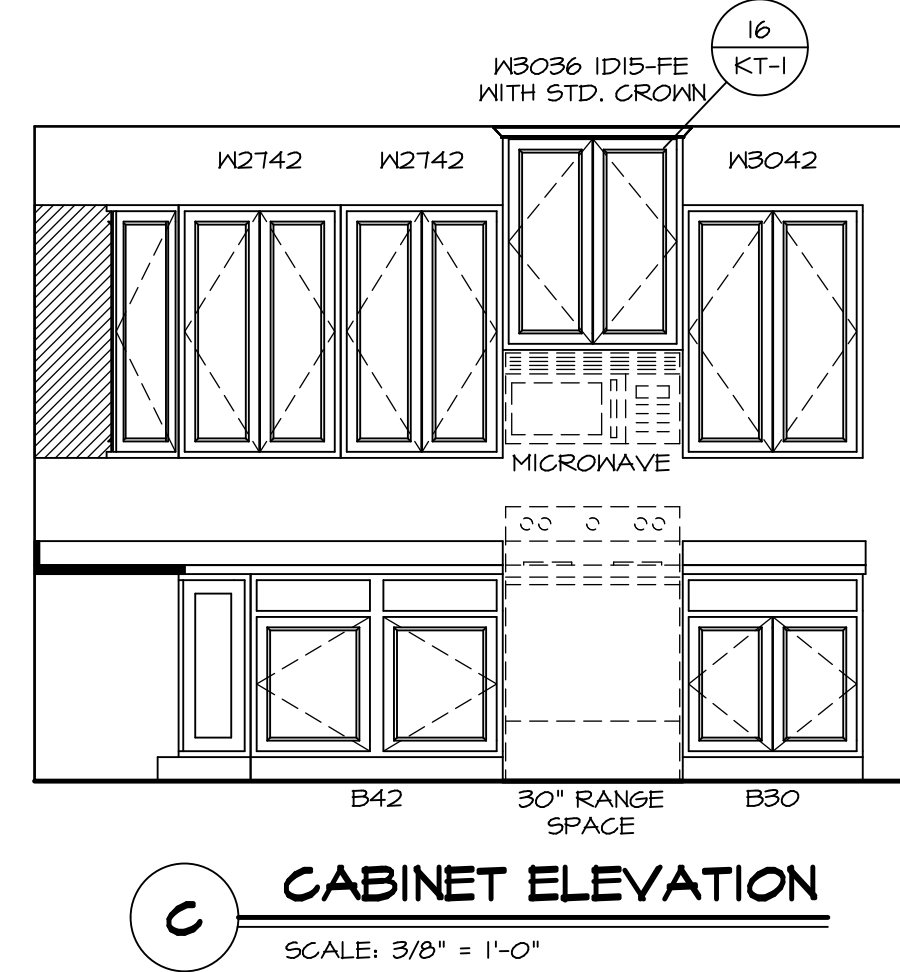
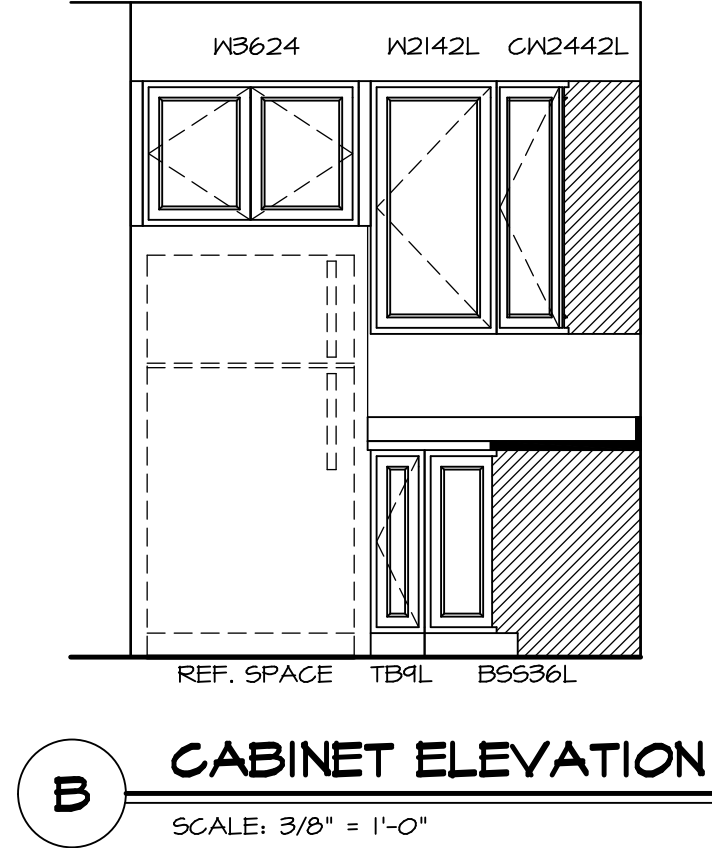
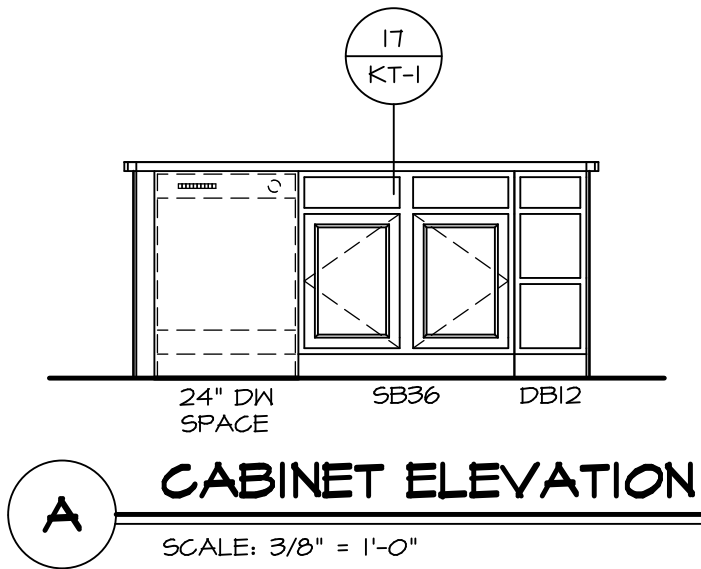
SHEET NO. <b>A-9</b>	MODEL <b>PISA TORRE</b> DRAWING TITLE <b>SECOND FLOOR PLAN</b> OPTION DESCRIPTION 4-4	SET NO. <b>PSTCO</b> VERSION <b>02</b> DRAWN BY DATE: OPTION	NVR, Inc. Architectural Services 5285 West... Suite 100 Frederick, MD 21703   NVR, Inc. owner, expressly reserves its copyright in these plans. These plans are not to be reproduced, changed, copied, or otherwise used without the written consent of NVR, Inc.
REV. NO.   DATE   REMARKS			1   08/07/16   TH - DRAWING ALIGNMENT



2 (KT-3209) COUNTERTOP LAYOUT  
SCALE: 3/8" = 1'-0"



1 (KC-3209) CABINET LAYOUT  
SCALE: 3/8" = 1'-0"



REV. NO.	DATE	REMARKS

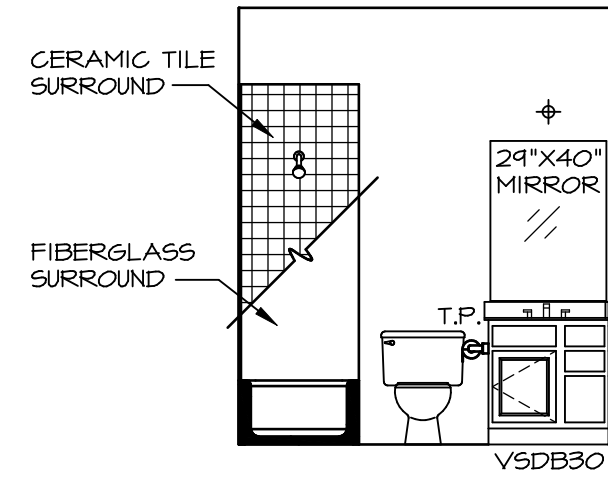
NVR, Inc., owner, expressly reserves its copyright in these plans. These plans are not to be reproduced, changed, copied or otherwise used in any way without the written consent of NVR, Inc.

**NVR**

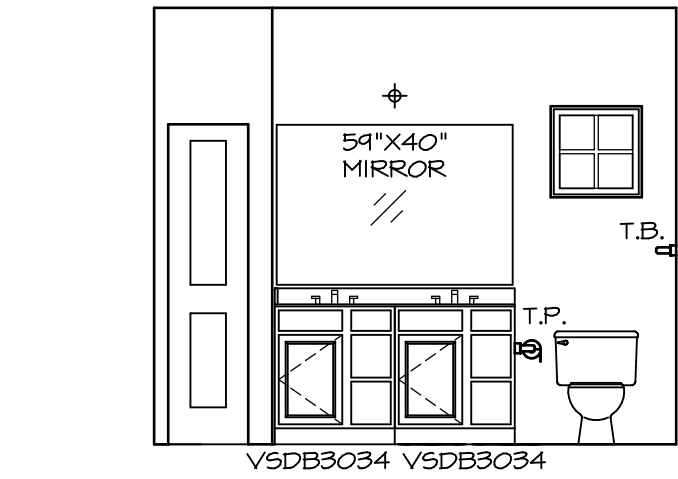
NVR, Inc.  
Architectural Services  
Architects  
5285 Westheimer Blvd., Suite 100  
Frederick, MD 21703

SET NO.	PST00
VERSION	02
DRAWN BY	BDH
DATE	3/24/15
OPTION	

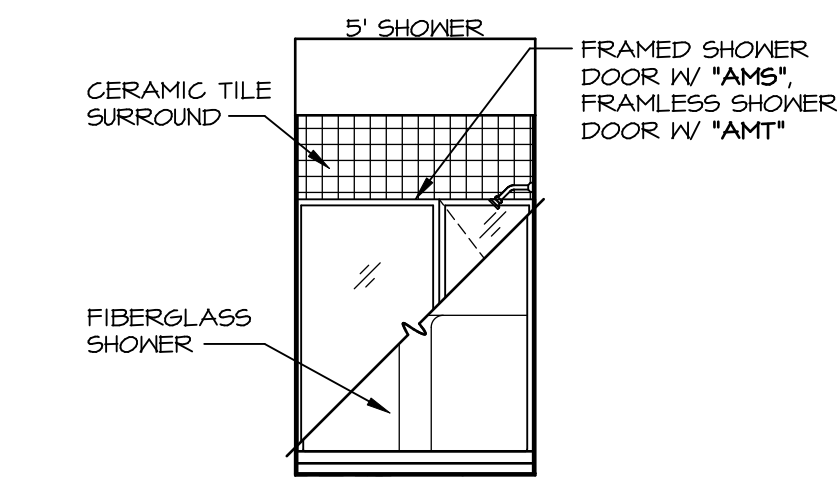
SHEET NO.	A-13	48
MODEL	PISA TORRE	
DRAWING TITLE	KITCHENS	
OPTION DESCRIPTION		



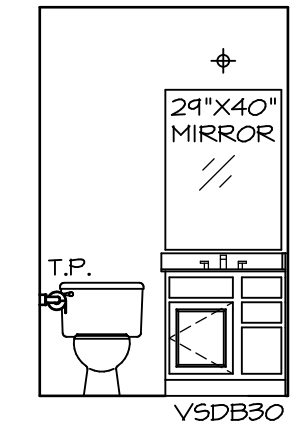
**A BATH #1**  
SCALE: 1/4" = 1'-0"



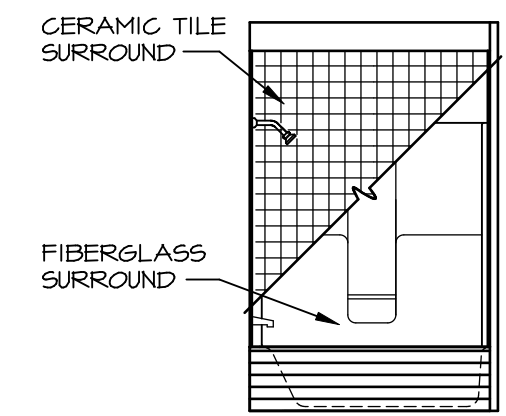
**B OWNER'S BATH**  
SCALE: 1/4" = 1'-0"



**C OWNER'S BATH**  
SCALE: 1/4" = 1'-0"



**Q ATTIC BATH**  
SCALE: 1/4" = 1'-0"



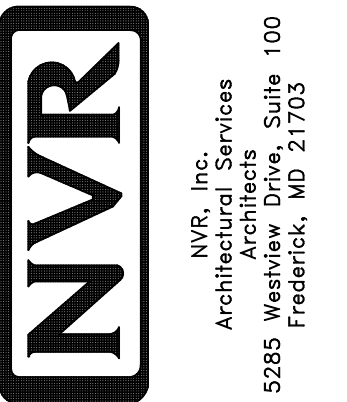
**R ATTIC BATH**  
SCALE: 1/4" = 1'-0"

**NOTES:**

1. TEMPERED GLASS SHOWER ENCLOSURE WITH SWING DOOR OR OPTIONAL SLIDING DOOR BY DIVISION
2. TUB ACCESS PANELS PROVIDED AS NEEDED, ALL MATERIALS BY DIVISION
3. REFER TO SHEET IT-2 FOR TUB AND SHOWER DETAILS.
4. ALL V5DB24-42 DRAWERS TO BE SET ON RIGHT HAND.
5. BATH ELEVATIONS ARE SHOWN PER PLAN.

NOTES  
• WINDOWS VARY PER OPTION.

NVR, Inc., owner, expressly reserves its copyright in these plans. These plans are not to be reproduced, changed, copied, or otherwise used in any way without the prior written consent of NVR, Inc.



MODEL	PISA TORRE
DRAWING TITLE	BATH ELEVATIONS
OPTION DESCRIPTION	
SHEET NO.	A-14
SET NO.	PSTCO
VERSION	02
DRAWN BY	
DATE:	
OPTION	

REV. NO.	DATE	REMARKS
1	08/07/16	TM - DRAINING ALIGNMENT