

FIRST FLOOR JACK SCHEDULE				
IDENTIFIER	DESCRIPTION	OPTIONS	ENS. NM.	REMARKS
J01	JACK - (2) 2X4 SFF STUD GRADE		1051 / 1050	
J02	JACK - (2) 2X4 SFF STUD GRADE		1051 / 1050	
J03	JACK - (5) 2X4 SPM	SXC	1051	STEEL PLATE
J04	JACK - (5) 2X4 SPM	SXC	1051	STEEL PLATE
J05	JACK - (2) 2X4 SFF STUD GRADE	ZCC / SXC	1052	
J06	JACK - (2) 2X4 SFF STUD GRADE	ZCC / SXC	1052	
J46	JACK - (5) 2X4 SPM	EDI / SXC	1051	STEEL PLATE
J47	JACK - (5) 2X4 SPM	EDI / SXC	1051	STEEL PLATE
J54	JACK - (3) 2X6 SFF STUD GRADE	EES / SXC	1050	STEEL PLATE
J55	JACK - (5) 2X4 SPM	EES / SXC	1050	STEEL PLATE
J61	JACK - (3) 2X4 SFF STUD GRADE	GCB / ZCC	1006	
J65	JACK - (3) 2X4 SFF STUD GRADE	GCB / ZCC	1006	

LEGEND	
[Line]	BEARING WALL
[Line]	NON BEARING WALL
[Circle with dot]	INDICATES BEARING FROM POINT-LOAD ABOVE
[L]	JACKS
[B]	BEAM/HEADER
[F]	PAD FOOTING
[C]	STEEL COLUMN
[X]	PORTAL FRAME
[X]	JOIST/TRUSS
[LVL]	LVL

LVL PLY TO PLY FASTENING SCHEDULE:	
1A - (2) PLY UP TO AND INCLUDING 11 7/8" TALL; FASTEN PLYS W/ (2) ROWS 16D NAILS AT 12" O.C.	
2A - (2) PLY 14" TO AND 18" TALL (INCLUSIVE); FASTEN PLYS W/ (3) ROWS 16D NAILS AT 12" O.C.	
3A - (2) PLY 20" TALL AND OVER; FASTEN PLYS W/ (4) ROWS 16D NAILS AT 12" O.C.	
4A - (3) PLY UP TO AND INCLUDING 11 7/8" TALL; FASTEN PLYS W/ (2) ROWS 16D NAILS AT 12" O.C. FROM EACH SIDE	
5A - (3) PLY 14" TO AND 18" TALL (INCLUSIVE); FASTEN PLYS W/ (3) ROWS 16D NAILS AT 12" O.C. FROM EACH SIDE	
6A - (3) PLY 20" TALL AND OVER; FASTEN PLYS W/ (4) ROWS 16D NAILS AT 12" O.C. FROM EACH SIDE	

FLOOR PLAN NOTES

- ALL HEADERS ARE (2) 2x6 W/ 2x4 WALLS OR (3) 2x6 W/ 2x6 WALLS, UNLESS OTHERWISE NOTED.
- ALL HEADERS TO HAVE (1) 2x4 OR 2x6 JACK EACH END, UNLESS OTHERWISE NOTED.
- ALL EXTERIOR WALLS TO BE 4" AND ALL INTERIOR WALLS TO BE 3 1/2", UNLESS OTHERWISE NOTED.
- HATCHED AREAS INDICATE DROPPED CEILINGS. ALL DROPPED CEILINGS ARE 12" UNLESS OTHERWISE NOTED.
- SEE "BRACED WALL PANEL DETAIL SHEET" FOR SPECIAL WALL FRAMING LOCATIONS AND HEADER SIZES, IF APPLICABLE.
- ALL WINDOWS HAVE T-O 1/2" HEADER HEIGHT UNLESS OTHERWISE NOTED.

GYPSUM NOTES

AT GARAGE:
GYPSUM BOARD AT COMMON WALLS, CEILINGS, BEAM WRAPS AND SUPPORTS AS REQUIRED BY LOCAL CODE.

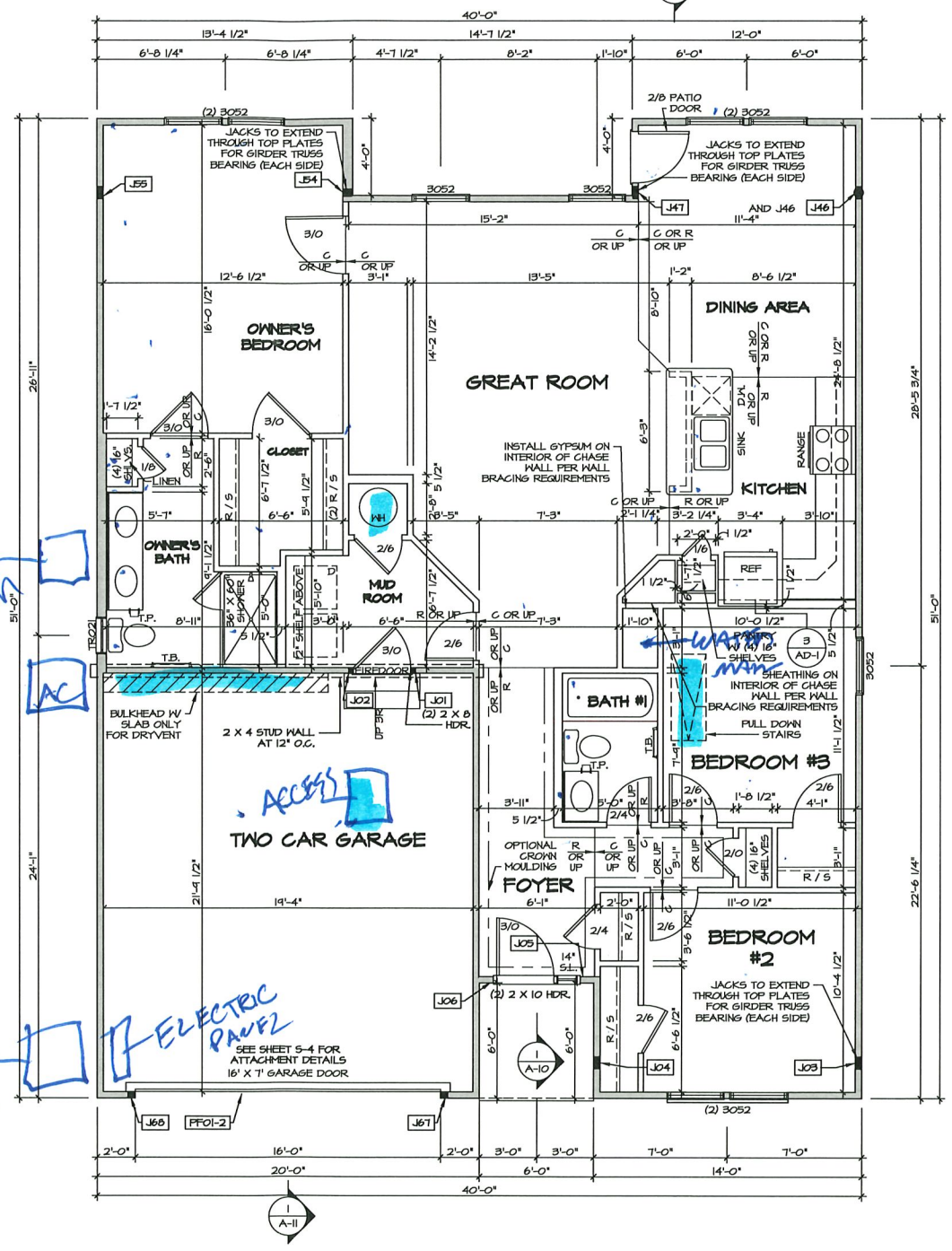
AT STAIRS:
1/2" GYPSUM BOARD AT UNDERSIDE OF STAIRS AND WALLS IN CLOSET

GAS METER

ELECTRIC METER

ELECTRIC PANEL

ACCESS



FIRST FLOOR PLAN
SCALE: 1/4" = 1'-0"

SHEET NO.	REVISIONS	DATE	REV. NO.	DATE	REV. NO.	REMARKS
A-7			1	08/01/19	TH - DRAWING ALIGNMENT	

SET NO. PST00
 VERSION 02
 DRAWN BY
 DATE:
 OPTION

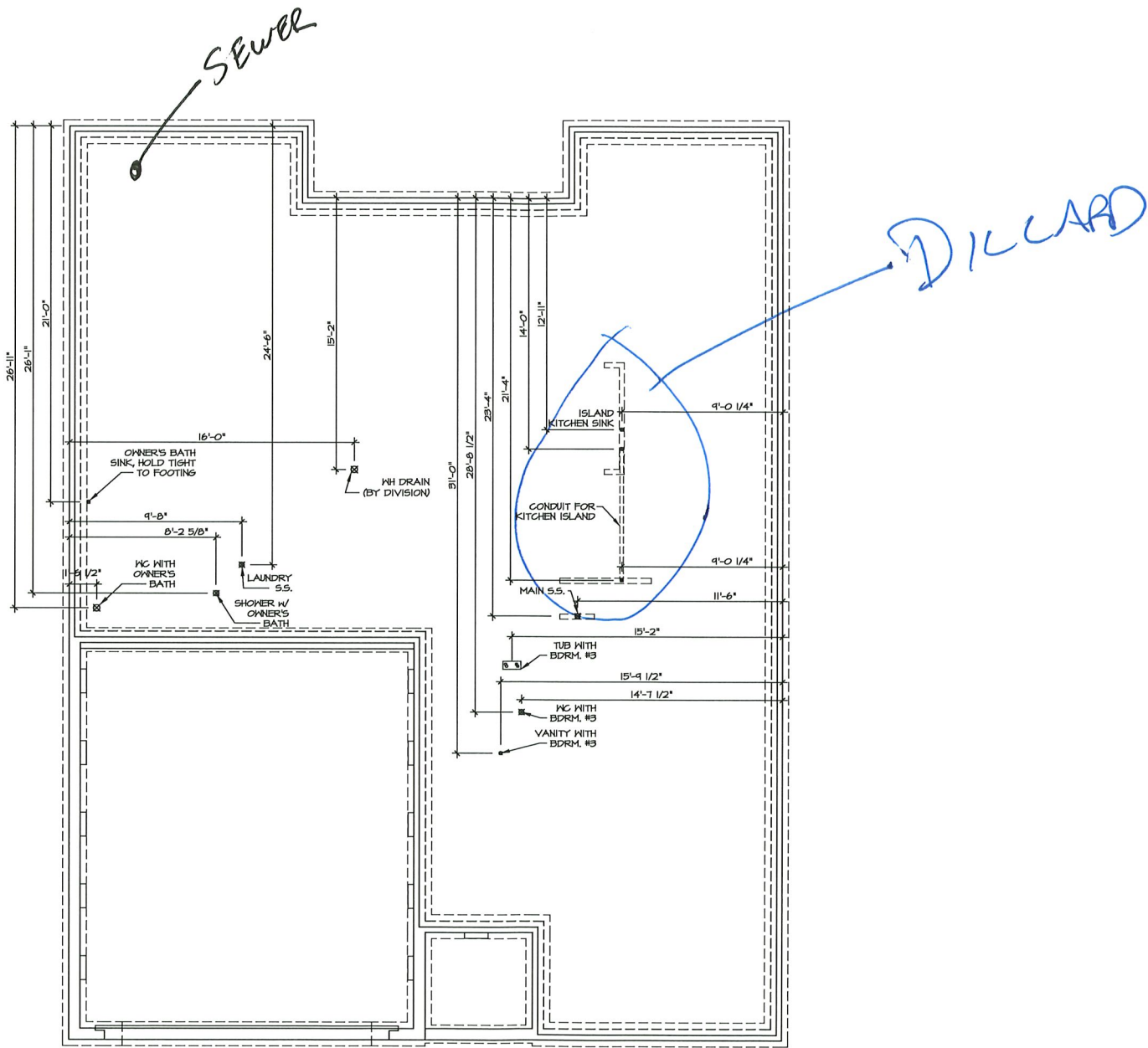
USER: PISA TORRE
 DRAWING TITLE: FIRST FLOOR PLAN
 OPTION DESCRIPTION: CORNERSTONE SPECIFICATIONS

36

NVR, Inc., owner, expressly warrants that it has the right to grant the license and other property rights in these plans, these plans are not to be reproduced, stored in a retrieval system, or transmitted in any form or manner whatsoever, electronic or mechanical, including photocopying, recording, or by any information storage and retrieval system, without the prior written consent of NVR, Inc.

NVR, Inc.
 Architectural Services
 5235 Westview Drive, Suite 100
 Frederick, MD 21703

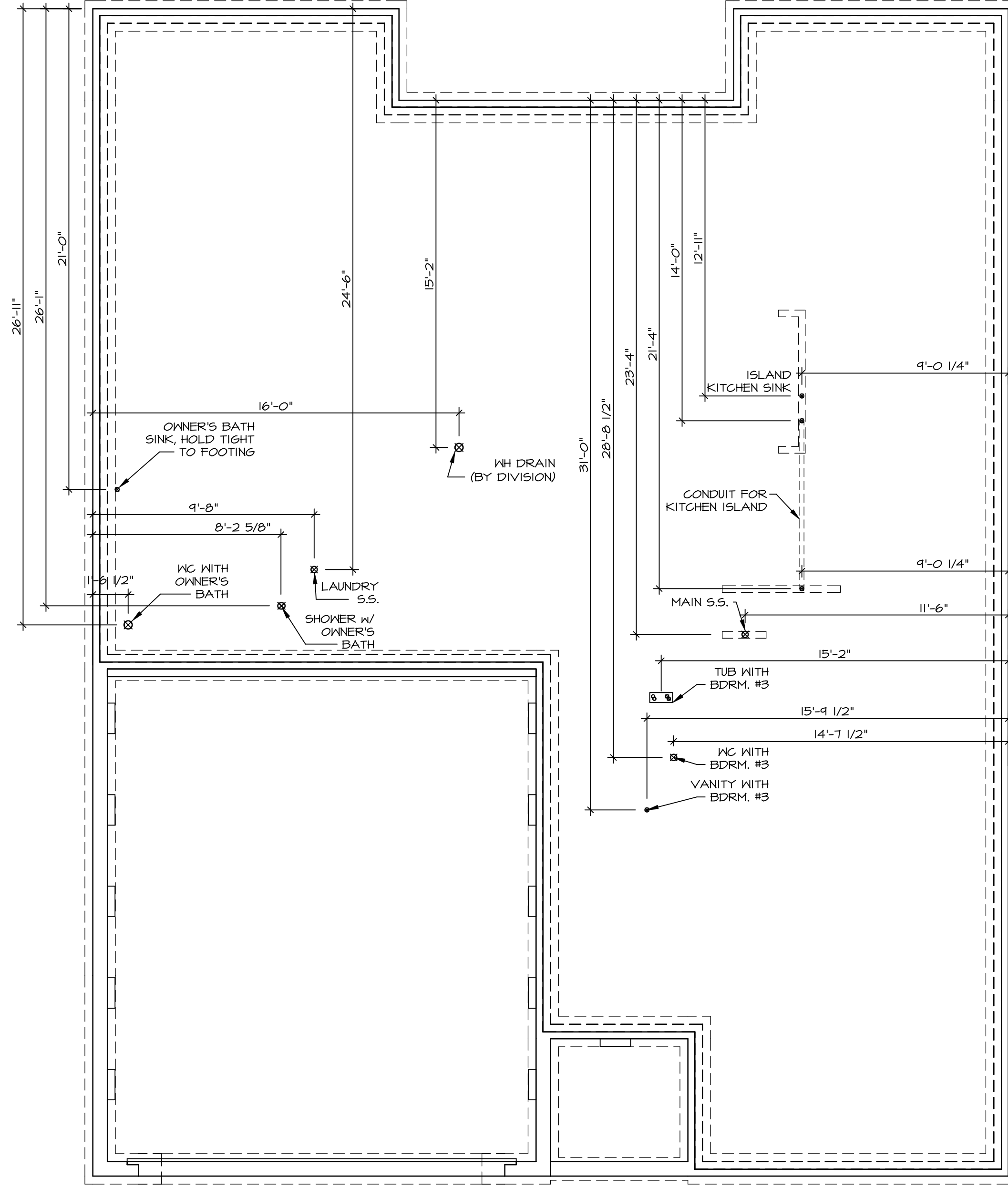
J:\DWG\A-7-5019A.DWG 2019 11/11/19 PISA TORRE PST00_02.ELB R AK 008A.36 A-7 PLAN -SIC-LS-03/24/19 - 11:44 AM



1 PLUMBING PLAN
 A-5 SCALE: 1/4" = 1'-0"

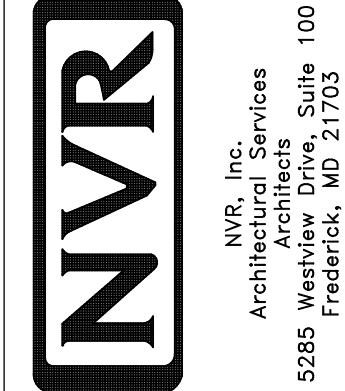
SHEET NO. A-5	MODEL PISA TORRE	SET NO. P5100	REMARKS
	DRAWING TITLE PLUMBING PLAN	VERSION 02	
31	OPTION DESCRIPTION	DATE:	<p>NVR, Inc., owner, expressly reserves its common law copyright in these plans. These plans are not to be reproduced, stored in a retrieval system, or transmitted in any form or by any means, electronic, mechanical, photocopying, recording, or otherwise, without the prior written consent of NVR, Inc.</p>
		OPTION	
<p>PROJECT: RYAN HOMES PISA TORRE P5100_02A_SHEETA Lot_Specific_31 A-5_PLUMBING.dwg 02/27/19 - 2:12 PM</p>			





PLUMBING PLAN
 SCALE: 1/4" = 1'-0"

SHEET NO. A-5	MODEL PISA TORRE	SET NO. PSTCO	REV. NO. DATE	REMARKS
	DRAWING TITLE PLUMBING PLAN	VERSION 02		
OPTION DESCRIPTION 31	DRAWN BY	DATE:	<p> NVR, Inc., owner, expressly reserves its copyright in these plans. These plans are not to be reproduced, changed, copied, or used for any purpose other than that specifically stated in writing, without the written consent of NVR, Inc. </p>	
		OPTION		



FIRST FLOOR JACK SCHEDULE				
IDENTIFIER	DESCRIPTION	OPTIONS	ENG. NUM.	REMARKS
J01	JACK - (2) 2X4 SPF STUD GRADE		1051 / 1050	
J02	JACK - (2) 2X4 SPF STUD GRADE		1051 / 1050	
J03	JACK - (5) 2X4 SP#1	SXC	1051	STEEL PLATE
J04	JACK - (5) 2X4 SP#1	SXC	1051	STEEL PLATE
J05	JACK - (2) 2X4 SPF STUD GRADE	ZCC / SXC	1062	
J06	JACK - (2) 2X4 SPF STUD GRADE	ZCC / SXC	1062	
J46	JACK - (2) 2X4 SP#1	EDI / SXC	1051	STEEL PLATE
J47	JACK - (5) 2X4 SP#1	EDI / SXC	1051	STEEL PLATE
J54	JACK - (3) 2X6 SPF STUD GRADE	EES / SXC	1050	STEEL PLATE
J55	JACK - (5) 2X4 SP#1	EES / SXC	1050	STEEL PLATE
J67	JACK - (3) 2X4 SPF STUD GRADE	GCB / ZCC	1006	
J68	JACK - (3) 2X4 SPF STUD GRADE	GCB / ZCC	1006	

LEGEND	
	BEARING WALL
	NON BEARING WALL
	INDICATES BEARING FROM POINT-LOAD ABOVE
	JACKS
	BEAM/HEADER
	PAD FOOTING
	STEEL COLUMN
	PORTAL FRAME
	JOIST/TRUSS
	LVL
	ENGINEERING PAGE NUMBER

SEE FC DETAILS FOR FRAMING CONNECTORS

FIELD INSTALLED FIRST FLOOR BEAM/HEADER SCHEDULE					
IDENTIFIER	DESCRIPTION	LENGTH	OPTIONS	ENG. NUM.	REMARKS
PFOI-2	LVL - 14	14'-4"	GCB / ZCC	1006	2 PLY, 2A

LVL PLY TO PLY FASTENING SCHEDULE:					
1A	(2) FLY UP TO AND INCLUDING 11 7/8" TALL; FASTEN PLYS W/ (2) ROWS 16D NAILS AT 12" O.C.				
2A	(2) FLY 14" TO AND 18" TALL (INCLUSIVE); FASTEN PLYS W/ (2) ROWS 16D NAILS AT 12" O.C.				
3A	(2) FLY 20" TALL AND OVER; FASTEN PLYS W/ (4) ROWS 16D NAILS AT 12" O.C.				
4A	(3) FLY UP TO AND INCLUDING 11 7/8" TALL; FASTEN PLYS W/ (2) ROWS 16D NAILS AT 12" O.C. FROM EACH SIDE				
5A	(3) FLY 14" TO AND 18" TALL (INCLUSIVE); FASTEN PLYS W/ (3) ROWS 16D NAILS AT 12" O.C. FROM EACH SIDE				
6A	(3) FLY 20" TALL AND OVER; FASTEN PLYS W/ (4) ROWS 16D NAILS AT 12" O.C. FROM EACH SIDE				

FLOOR PLAN NOTES

- ALL HEADERS ARE (2) 2x6 w/ 2x4 WALLS OR (3) 2x6 w/ 2x6 WALLS, UNLESS OTHERWISE NOTED.
- ALL HEADERS TO HAVE (1) 2x4 OR 2x6 JACK EACH END, UNLESS OTHERWISE NOTED.
- ALL EXTERIOR WALLS TO BE 4" AND ALL INTERIOR WALLS TO BE 3 1/2", UNLESS OTHERWISE NOTED.
- HATCHED AREAS INDICATE DROPPED CEILINGS. ALL DROPPED CEILINGS ARE 12' UNLESS OTHERWISE NOTED.
- SEE "BRACED WALL PANEL DETAIL SHEET" FOR SPECIAL WALL FRAMING LOCATIONS AND HEADER SIZES, IF APPLICABLE.
- SEE STANDARD DETAIL CATEGORY "IT" SHEET(S) FOR INTERIOR TRIM DETAILS.
- SEE ARCHITECTURAL DETAIL SHEET "AD" FOR HOUSE SPECIFIC INTERIOR TRIM OPTION TABLE.
- ALL WINDOWS HAVE T-0 1/2" HEADER HEIGHT UNLESS OTHERWISE NOTED.

GYPSUM NOTES

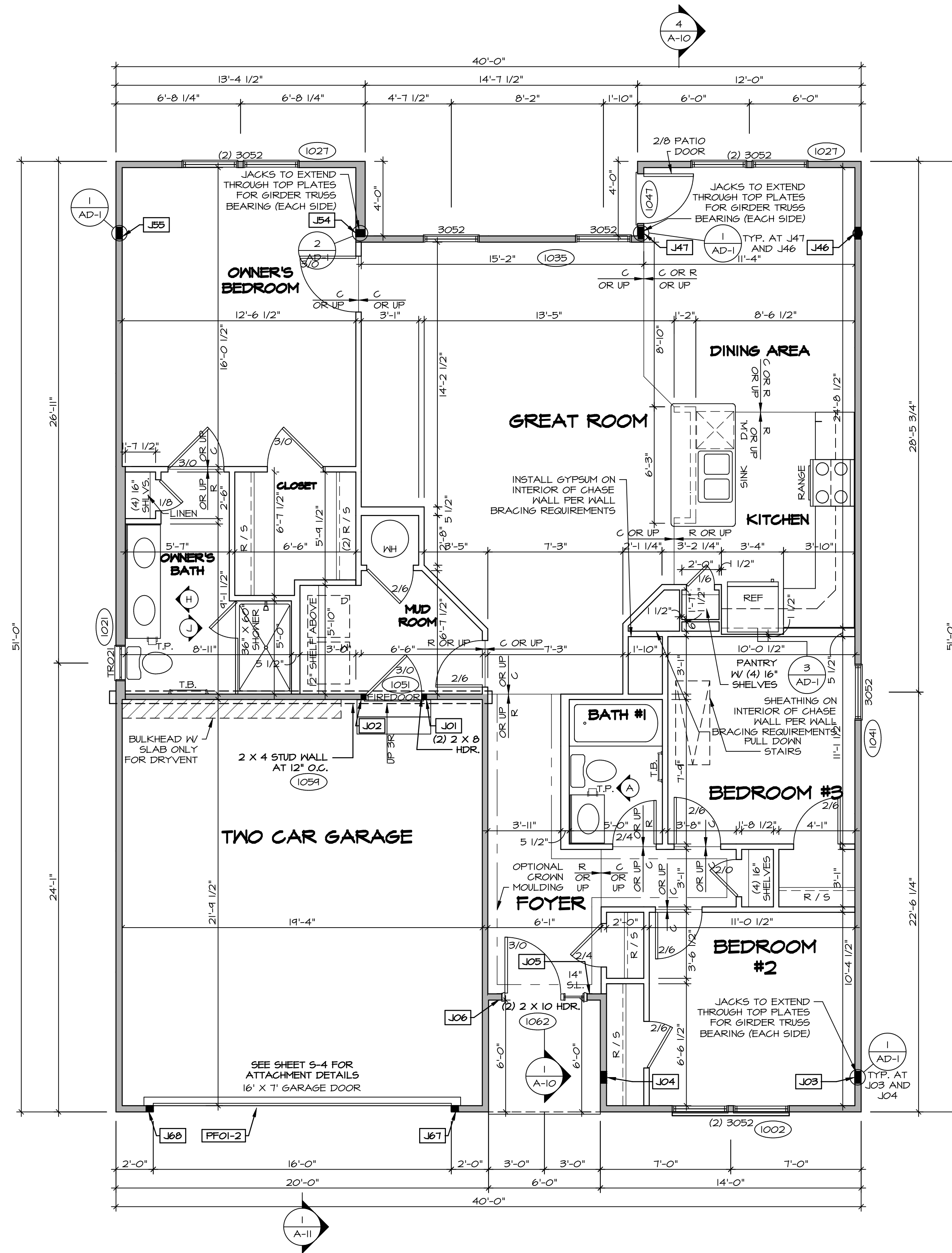
AT GARAGE:
GYPSUM BOARD AT COMMON WALLS, CEILING, BEAM WRAPS AND SUPPORTS PER STANDARD DETAIL FA-1(b) FIRE ASSEMBLIES OR AS REQUIRED BY LOCAL CODE.

AT STAIRS:
1/2" GYPSUM BOARD AT UNDERSIDE OF STAIRS AND WALLS IN CLOSET

BASEMENT WITH I-JOIST FLOOR SYSTEM ABOVE:
WITH OPTION "SCI" - DRYWALL UNFINISHED BASEMENT CEILING AREA

NOTES:

- 1/2" GYPSUM WALL BOARD REQUIRED ON CEILING IN UNFINISHED AREAS WHEN NO SPRINKLER SYSTEM IS INSTALLED
- A MAXIMUM AREA OF 80 SQ FT MAY BE OMITTED AS NEEDED FOR INSTALLATION OF PLUMBING, ELECTRICAL, AND/OR HVAC (TYPICALLY AN 8'-0"x8'-0" CEILING SPACE ABOVE MECHANICAL AREA).
- PROVIDE FIRE BLOCKING AS REQUIRED AT PERIMETER OF ANY AREAS WHERE DRYWALL HAS BEEN OMITTED.

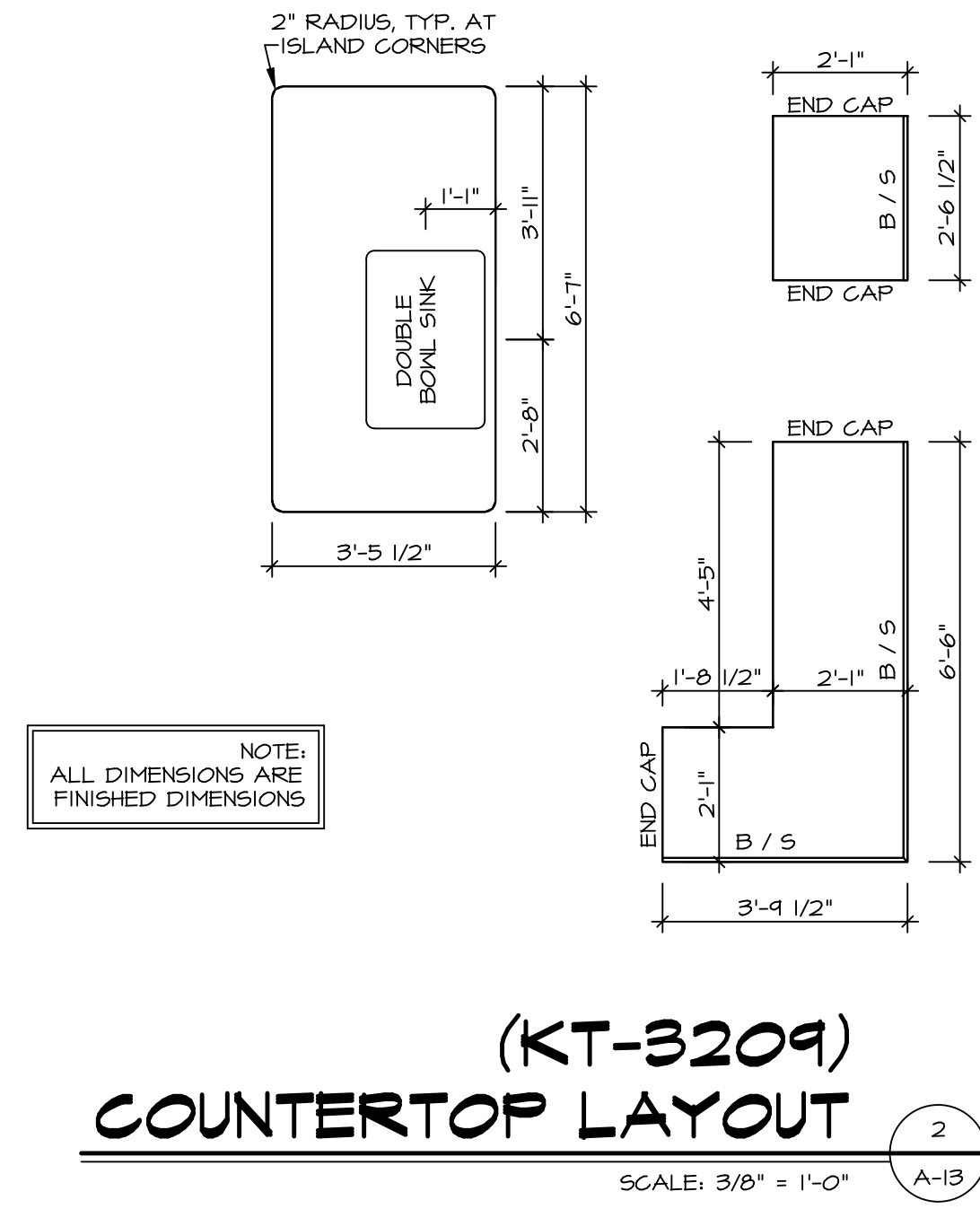


FIRST FLOOR PLAN
SCALE: 1/4" = 1'-0"

SHEET NO. A-7	MODEL PISA TORRE	SET NO. P5TCO	REVISIONS
	DRAWING TITLE FIRST FLOOR PLAN	VERSION 02	DATE: OPTION
36	OPTION DESCRIPTION CORNERSTONE SPECIFICATIONS	 NVR, Inc. Architectural Services 5285 West... Frederick, MD 21703	
	SHEET NO. A-7 MODEL PISA TORRE DRAWING TITLE FIRST FLOOR PLAN OPTION DESCRIPTION CORNERSTONE SPECIFICATIONS	SET NO. P5TCO VERSION 02 DRAWN BY DATE: OPTION	REV. NO. DATE 08/01/16 TH - DRAWING ALIGNMENT

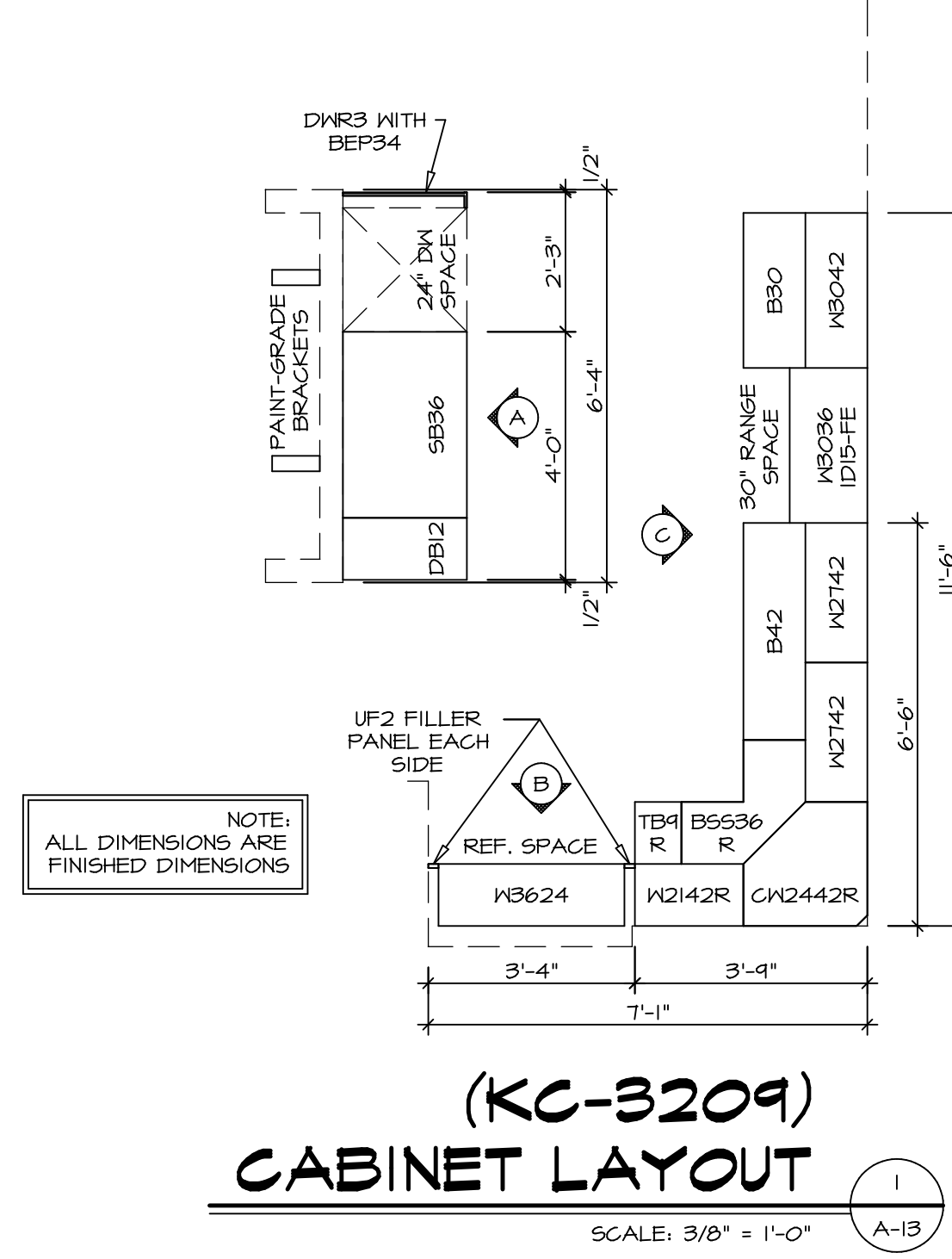
NVR, Inc., owner, expressly reserves its common law copyright in these plans. These plans are not to be reproduced, changed, or adapted in any way without the prior written consent of NVR, Inc.

C:\NVR\Solves\PISA_TORRE_P5TCO_02\DCI-AK-0082\114375\Sheet\Lot_Specific\36_A-7_PLN1-SXC-LS.dwg 03/07/19 - 8:00 am



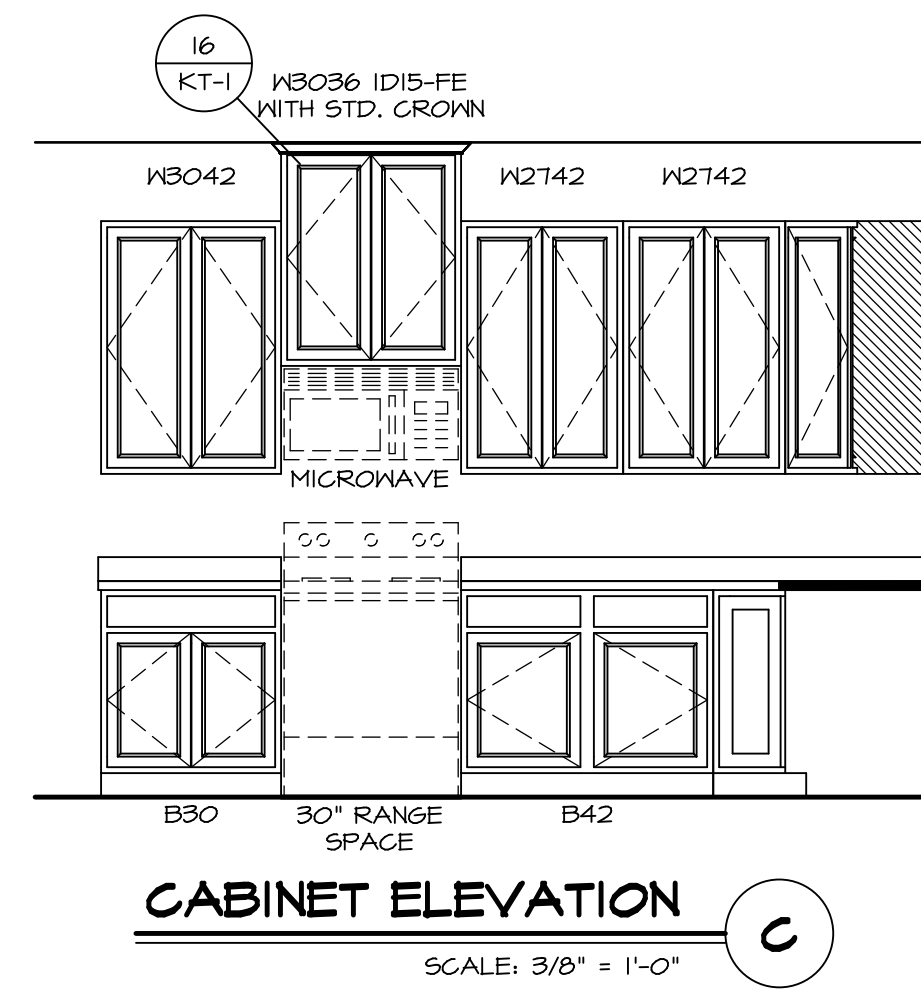
(KT-3209)
COUNTERTOP LAYOUT

SCALE: 3/8" = 1'-0" A-13



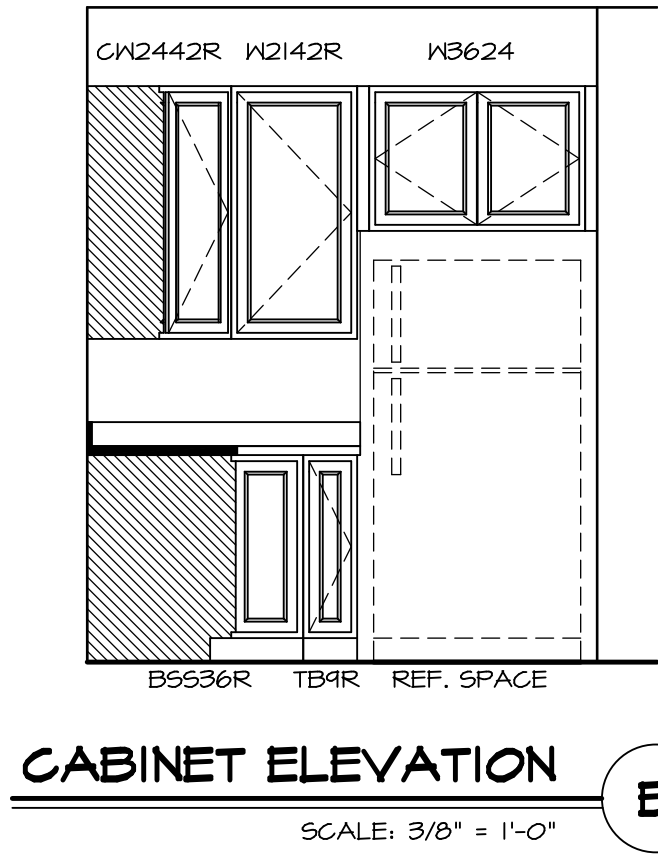
(KC-3209)
CABINET LAYOUT

SCALE: 3/8" = 1'-0" A-13



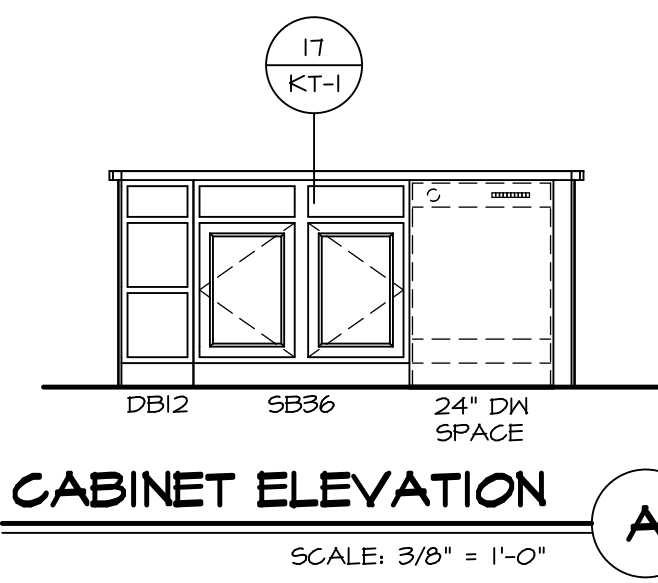
CABINET ELEVATION

SCALE: 3/8" = 1'-0" C



CABINET ELEVATION

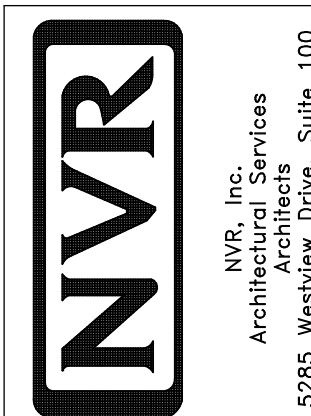
SCALE: 3/8" = 1'-0" B



CABINET ELEVATION

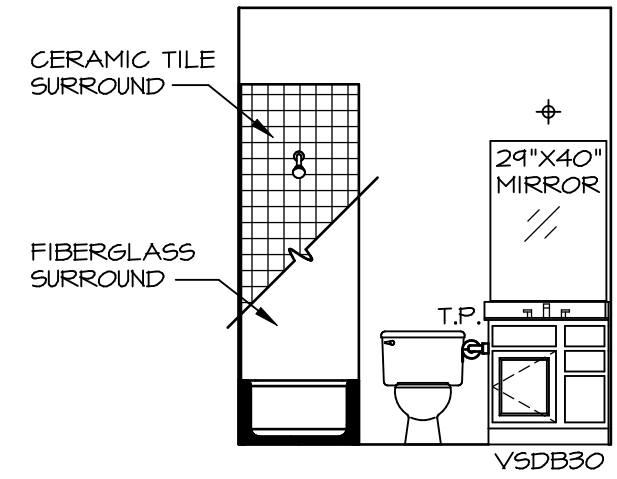
SCALE: 3/8" = 1'-0" A

SHEET NO. A-13	MODEL PISA TORRE	SET NO. PST00
DRAWING TITLE KITCHENS	VERSION 02	DRAWN BY BDH
OPTION DESCRIPTION	DATE 3/24/15	OPTION
48		

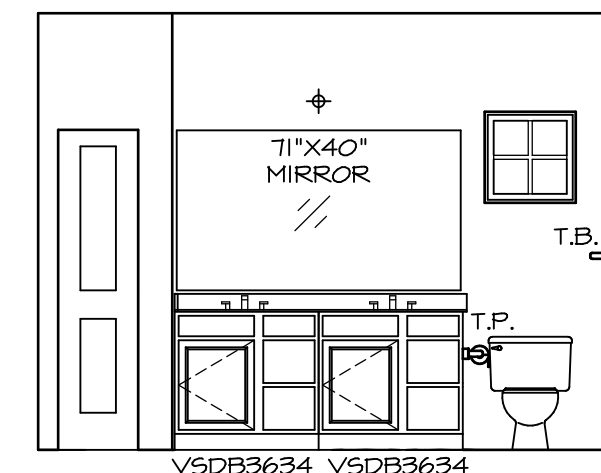


NVR, Inc., owner, expressly reserves its copyright in these plans. These plans are not to be reproduced, changed, copied in any way, or otherwise used, without the prior written consent of NVR, Inc.

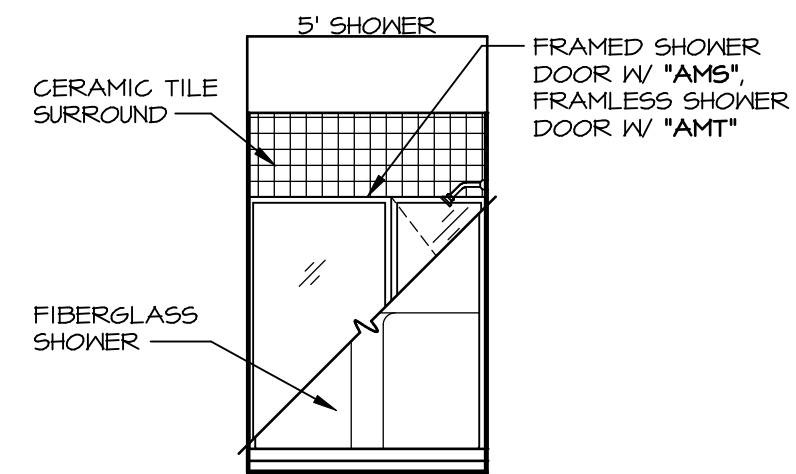
REV. NO.	DATE	REMARKS



A BATH #1
SCALE: 1/4" = 1'-0"



H OWNER'S BATH
SCALE: 1/4" = 1'-0"



J OWNER'S BATH
SCALE: 1/4" = 1'-0"

NOTES:

1. TEMPERED GLASS SHOWER ENCLOSURE WITH SWING DOOR OR OPTIONAL SLIDING DOOR BY DIVISION
2. TUB ACCESS PANELS PROVIDED AS NEEDED, ALL MATERIALS BY DIVISION
3. REFER TO SHEET IT-2 FOR TUB AND SHOWER DETAILS.
4. ALL VSD24-42 DRAWERS TO BE SET ON RIGHT HAND.
5. BATH ELEVATIONS ARE SHOWN PER PLAN.

NOTES
• WINDOWS VARY PER OPTION.

SHEET NO.	MODEL	SET NO.	VERSION
A-14	PISA TORRE	PSTCO	O2
	DRAWING TITLE	DRAWN BY	
	BATH ELEVATIONS	DATE:	
	OPTION DESCRIPTION	OPTION	
53			

NVR
NVR, Inc.
Architectural Services
Architects
5285 West
Frederick, MD 21703

NVR, Inc., owner, expressly reserves its copyright in these plans. These plans are not to be reproduced, changed, adapted in any way, or otherwise used, without the prior written consent of NVR, Inc.

REV. NO.	DATE	REMARKS
1	08/07/16	TM - DRAWING ALIGNMENT