

FIRST FLOOR JACK SCHEDULE				
IDENTIFIER	DESCRIPTION	OPTIONS	ENG. NUM.	REMARKS
J01	JACK - (2) 2X4 SPF STUD GRADE		1051 / 1050	
J02	JACK - (2) 2X4 SPF STUD GRADE		1051 / 1050	
J03	JACK - (5) 2X4 SP#1	SXC	1051	STEEL PLATE
J04	JACK - (5) 2X4 SP#1	SXC	1051	STEEL PLATE
J05	JACK - (2) 2X4 SPF STUD GRADE	ZCC / SXC	1062	
J06	JACK - (2) 2X4 SPF STUD GRADE	ZCC / SXC	1062	
J13	JACK - (2) 2X4 SPF STUD GRADE	ELD	1053 / 1056	
J15	JACK - (2) 2X4 SPF STUD GRADE	D6T / ZCC / SXC	1094	
J16	JACK - (2) 2X4 SPF STUD GRADE	D6T / ZCC / SXC	1094	
J67	JACK - (3) 2X4 SPF STUD GRADE	GCB / ZCC	1006	
J68	JACK - (3) 2X4 SPF STUD GRADE	GCB / ZCC	1006	

LEGEND	
	BEARING WALL
	NON BEARING WALL
	INDICATES BEARING FROM POINT-LOAD ABOVE
	JACKS
	BEAM/HEADER
	PAD FOOTING
	STEEL COLUMN
	PORTAL FRAME
	JOIST/TRUSS
	LVL
	ENGINEERING PAGE NUMBER

SEE FC DETAILS FOR FRAMING CONNECTORS

LVL PLY TO PLY FASTENING SCHEDULE:

1.A - (2) PLY UP TO AND INCLUDING 11 7/8" TALL; FASTEN PLYS W/ (2) ROWS 16D NAILS AT 12" O.C.
 2.A - (2) PLY 14" TO AND 18" TALL (INCLUSIVE); FASTEN PLYS W/ (3) ROWS 16D NAILS AT 12" O.C.
 3.A - (2) PLY 20" TALL AND OVER; FASTEN PLYS W/ (4) ROWS 16D NAILS AT 12" O.C.
 4.A - (3) PLY UP TO AND INCLUDING 11 7/8" TALL; FASTEN PLYS W/ (2) ROWS 16D NAILS AT 12" O.C. FROM EACH SIDE
 5.A - (3) PLY 14" TO AND 18" TALL (INCLUSIVE); FASTEN PLYS W/ (3) ROWS 16D NAILS AT 12" O.C. FROM EACH SIDE
 6.A - (3) PLY 20" TALL AND OVER; FASTEN PLYS W/ (4) ROWS 16D NAILS AT 12" O.C. FROM EACH SIDE

FIELD INSTALLED FIRST FLOOR BEAM/HEADER SCHEDULE

IDENTIFIER	DESCRIPTION	LENGTH	OPTIONS	ENG. NUM.	REMARKS
PFOI-2	LVL - 14	14'-4"	GCB / ZCC	1006	2 PLY, 2A

FLOOR PLAN NOTES

- ALL HEADERS ARE (2) 2x6 w/ 2x4 WALLS OR (3) 2x6 w/ 2x6 WALLS, UNLESS OTHERWISE NOTED.
- ALL HEADERS TO HAVE (1) 2x4 OR 2x6 JACK EACH END, UNLESS OTHERWISE NOTED.
- ALL EXTERIOR WALLS TO BE 4" AND ALL INTERIOR WALLS TO BE 3 1/2", UNLESS OTHERWISE NOTED.
- HATCHED AREAS INDICATE DROPPED CEILINGS. ALL DROPPED CEILINGS ARE 12" UNLESS OTHERWISE NOTED.
- SEE "BRACED WALL PANEL DETAIL SHEET" FOR SPECIAL WALL FRAMING LOCATIONS AND HEADER SIZES, IF APPLICABLE.
- SEE STANDARD DETAIL CATEGORY "IT" SHEET(S) FOR INTERIOR TRIM DETAILS.
- SEE ARCHITECTURAL DETAIL SHEET "AD" FOR HOUSE SPECIFIC INTERIOR TRIM OPTION TABLE.
- ALL WINDOWS HAVE T-0 1/2" HEADER HEIGHT UNLESS OTHERWISE NOTED.

GYPSUM NOTES

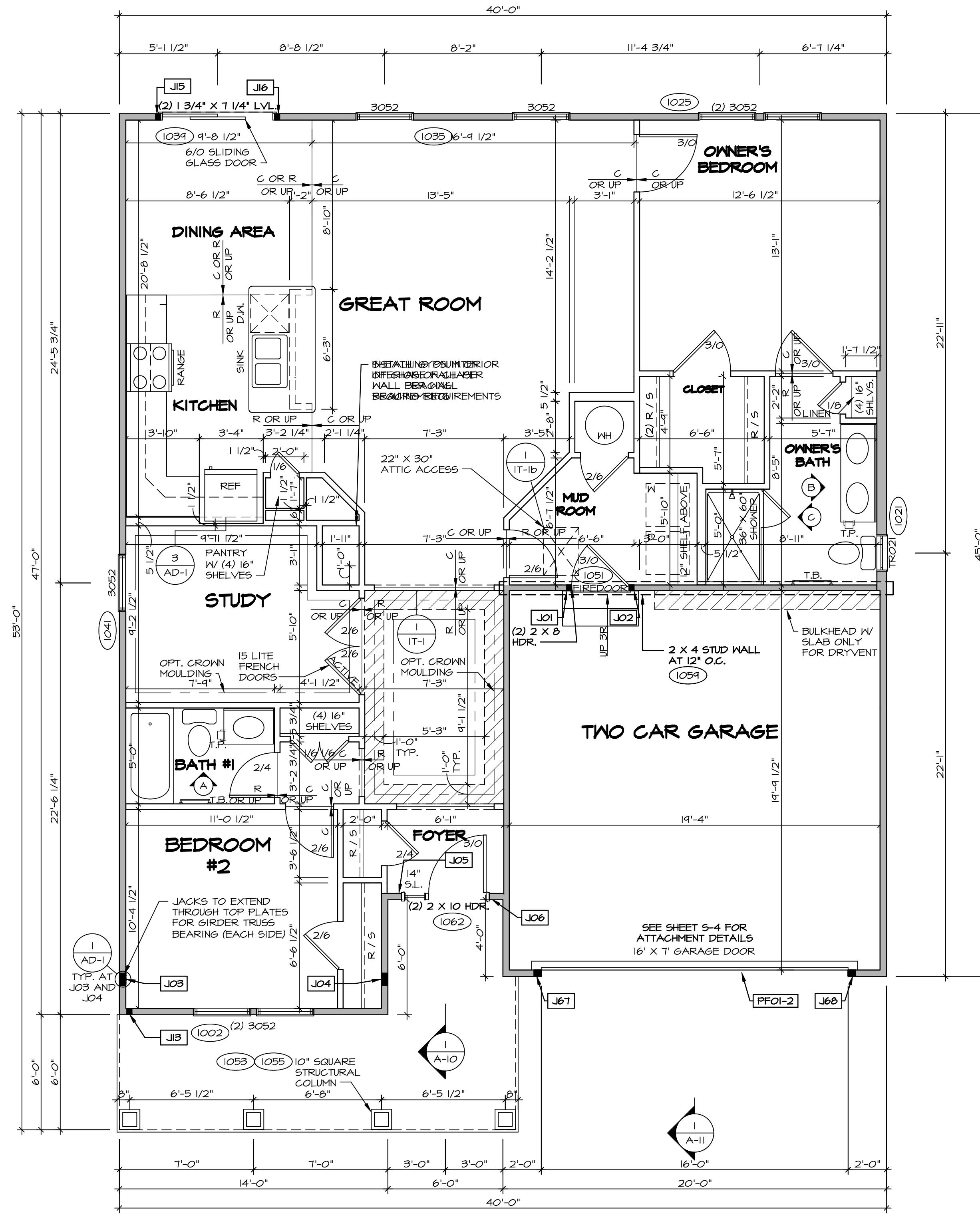
AT GARAGE:
 GYPSUM BOARD AT COMMON WALLS, CEILINGS, BEAM WRAPS AND SUPPORTS PER STANDARD DETAIL FA-1(b) FIRE ASSEMBLIES OR AS REQUIRED BY LOCAL CODE.

AT STAIRS:
 1/2" GYPSUM BOARD AT UNDERSIDE OF STAIRS AND WALLS IN CLOSET

BASEMENT WITH 1-JOIST FLOOR SYSTEM ABOVE:
 WITH OPTION "SC1" - DRYWALL UNFINISHED BASEMENT CEILING AREA

NOTES:

- 1/2" GYPSUM WALL BOARD REQUIRED ON CEILING IN UNFINISHED AREAS WHEN NO SPRINKLER SYSTEM IS INSTALLED
- A MAXIMUM AREA OF 80 SQ FT MAY BE OMITTED AS NEEDED FOR INSTALLATION OF PLUMBING, ELECTRICAL, AND/OR HVAC (TYPICALLY AN 8'-0"x8'-0" CEILING SPACE ABOVE MECHANICAL AREA).
- PROVIDE FIRE BLOCKING AS REQUIRED AT PERIMETER OF ANY AREAS WHERE DRYWALL HAS BEEN OMITTED.



FIRST FLOOR PLAN
 SCALE: 1/4" = 1'-0"

MODEL	PISA TORRE	SET NO.	PSTCO
DRAWING TITLE	FIRST FLOOR PLAN	VERSION	02
OPTION DESCRIPTION	CORNERSTONE SPECIFICATIONS	DRAWN BY	
SHEET NO.	A-7	DATE:	
	36	OPTION	

REVISIONS:

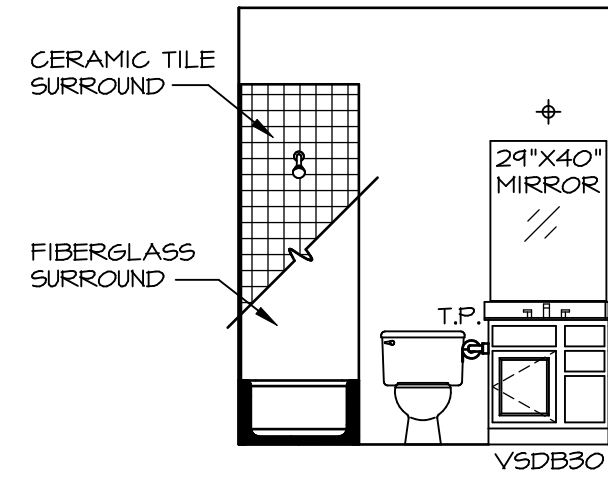
REV. NO.	DATE	DESCRIPTION
1	08/01/16	TH - DRAWING ALIGNMENT

REMARKS:

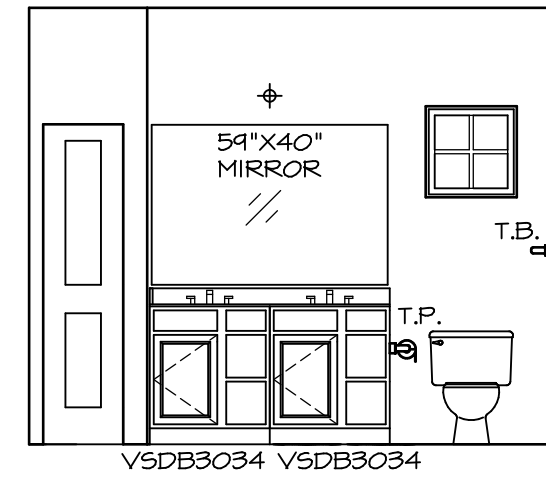
NVR, Inc., owner, expressly reserves its copyright in these plans. These plans are not to be reproduced, changed, or altered in any way without the written consent of NVR, Inc.

NVR
 NVR, Inc.
 Architectural Services
 Architects
 Suite 100
 5285 Westpark Drive
 Frederick, MD 21703

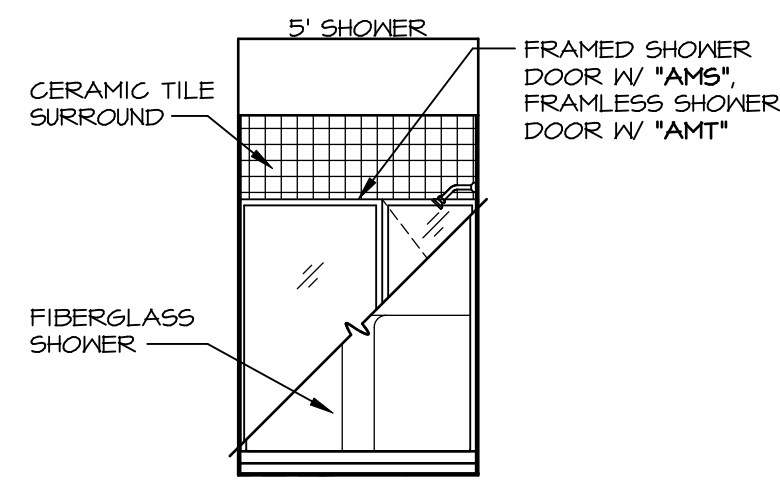
C:\NVR\Solves\PISA TORRE_PSTCO_02\DCY-AK-0087\161993\Sheet\Lot_Specific\36 A-7 PLAN_SXC_LS.dwg 03/21/19 - 6:35 am



A BATH #1
SCALE: 1/4" = 1'-0"



B OWNER'S BATH
SCALE: 1/4" = 1'-0"



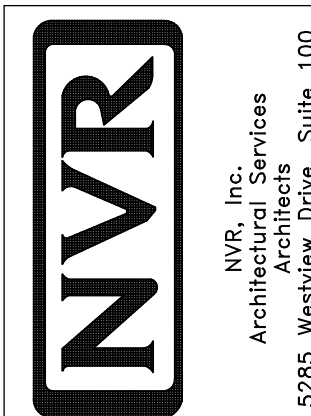
C OWNER'S BATH
SCALE: 1/4" = 1'-0"

NOTES:

1. TEMPERED GLASS SHOWER ENCLOSURE WITH SWING DOOR OR OPTIONAL SLIDING DOOR BY DIVISION
2. TUB ACCESS PANELS PROVIDED AS NEEDED, ALL MATERIALS BY DIVISION
3. REFER TO SHEET IT-2 FOR TUB AND SHOWER DETAILS.
4. ALL V5DB24-42 DRAWERS TO BE SET ON RIGHT HAND.
5. BATH ELEVATIONS ARE SHOWN PER PLAN.

NOTES
• WINDOWS VARY PER OPTION.

SHEET NO.	MODEL	SET NO.	OPTION
A-14	PISA TORRE	PSTCO	
	DRAWING TITLE	VERSION	
	BATH ELEVATIONS	02	
		DRAWN BY	
		DATE:	
		OPTION	



NVR, Inc., owner, expressly reserves its copyright in these plans. These plans are not to be reproduced, changed, copied, or otherwise used in any way without the prior written consent of NVR, Inc.

REV. NO.	DATE	REMARKS
1	08/07/16	TM - DRAINING ALIGNMENT