

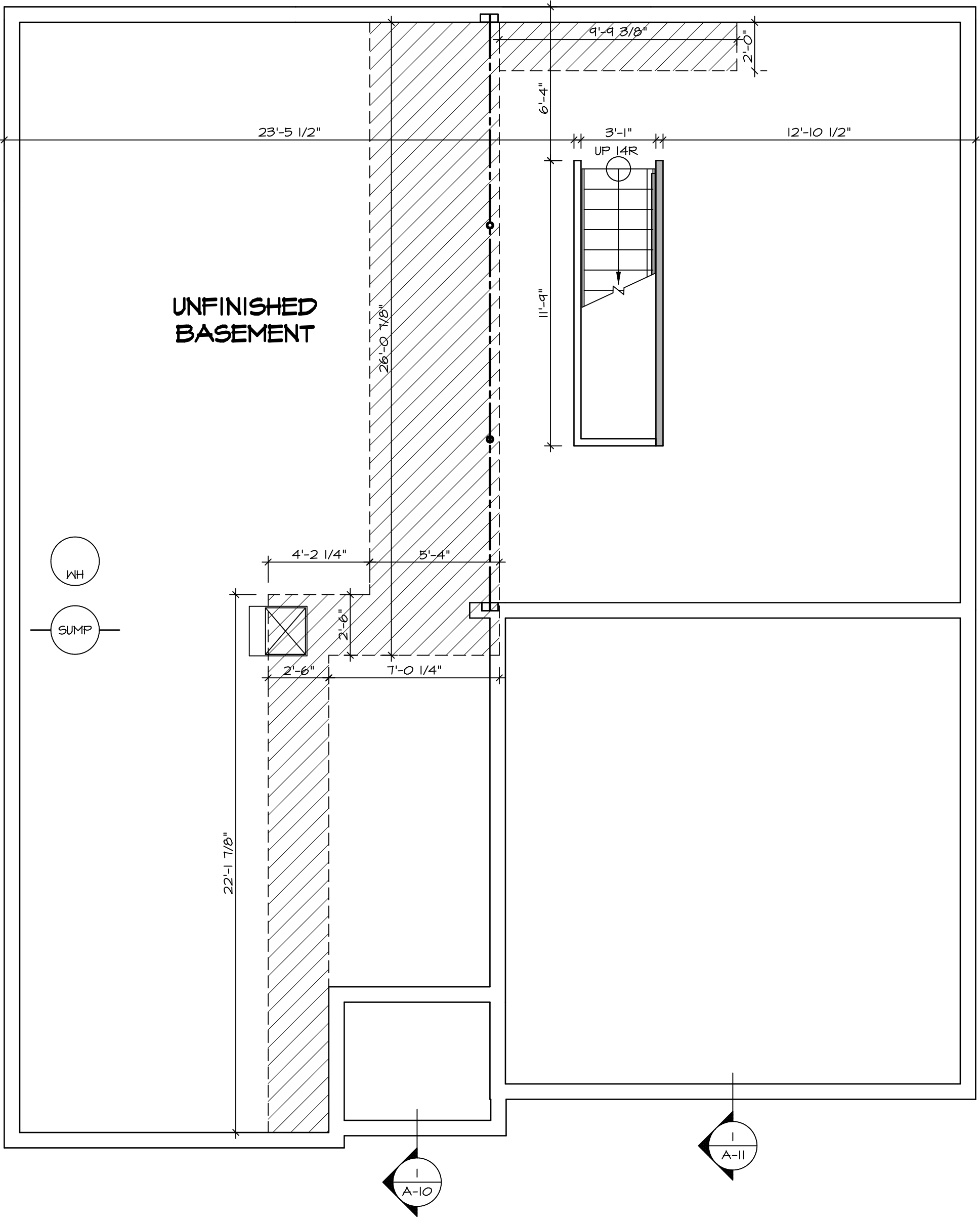
**PLUMBING PLAN**  
SCALE: 1/4" = 1'-0"

|                         |                                       |                         |
|-------------------------|---------------------------------------|-------------------------|
| SHEET NO.<br><b>A-5</b> | MODEL<br><b>PISA TORRE</b>            | SET NO.<br><b>PSTCO</b> |
|                         | DRAWING TITLE<br><b>PLUMBING PLAN</b> | VERSION<br><b>02</b>    |
|                         | OPTION DESCRIPTION                    | DRAWN BY                |
|                         |                                       | DATE:                   |
|                         |                                       | OPTION                  |

**NVR**  
Architectural Services  
5285 Westwood Drive, Suite 100  
Frederick, MD 21703

NVR, Inc., owner, expressly reserves its copyright in these plans. These plans are not to be reproduced, changed, copied, or otherwise used in any way without the prior written consent of NVR, Inc.

| REV. NO. | DATE | REMARKS |
|----------|------|---------|
|          |      |         |
|          |      |         |
|          |      |         |
|          |      |         |
|          |      |         |
|          |      |         |
|          |      |         |
|          |      |         |
|          |      |         |



**LEGEND**

|  |   |
|--|---|
|  | BEARING WALL                            |
|  | NON BEARING WALL                        |
|  | INDICATES BEARING FROM POINT-LOAD ABOVE |
|  | JACKS                                   |
|  | BEAM/HEADER                             |
|  | PAD FOOTING                             |
|  | STEEL COLUMN                            |
|  | PORTAL FRAME                            |
|  | JOIST/TRUSS                             |
|  | LVL                                     |
|  | ENGINEERING PAGE NUMBER                 |

SEE FC DETAILS FOR FRAMING CONNECTORS

- FLOOR PLAN NOTES**
- ALL HEADERS ARE (2) 2x6 w/ 2x4 WALLS OR (3) 2x6 w/ 2x6 WALLS, UNLESS OTHERWISE NOTED.
  - ALL HEADERS TO HAVE (1) 2x4 OR 2x6 JACK EACH END, UNLESS OTHERWISE NOTED.
  - ALL EXTERIOR WALLS TO BE 4" AND ALL INTERIOR WALLS TO BE 3 1/2", UNLESS OTHERWISE NOTED.
  - HATCHED AREAS INDICATE DROPPED CEILINGS. ALL DROPPED CEILINGS ARE 12" UNLESS OTHERWISE NOTED.
  - SEE "BRACED WALL PANEL DETAIL SHEET" FOR SPECIAL WALL FRAMING LOCATIONS AND HEADER SIZES, IF APPLICABLE.
  - SEE STANDARD DETAIL CATEGORY "IT" SHEET(S) FOR INTERIOR TRIM DETAILS.
  - SEE ARCHITECTURAL DETAIL SHEET "AD" FOR HOUSE SPECIFIC INTERIOR TRIM OPTION TABLE.
  - ALL WINDOWS HAVE 7'-0 1/2" HEADER HEIGHT UNLESS OTHERWISE NOTED.

**GYPSUM NOTES**

AT GARAGE:  
GYPSUM BOARD AT COMMON WALLS, CEILING, BEAM WRAPS AND SUPPORTS PER STANDARD DETAIL FA-1(b) FIRE ASSEMBLIES OR AS REQUIRED BY LOCAL CODE.

AT STAIRS:  
1/2" GYPSUM BOARD AT UNDERSIDE OF STAIRS AND WALLS IN CLOSET

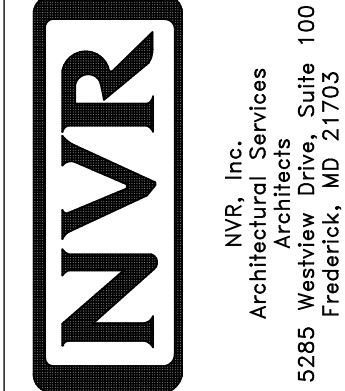
BASEMENT WITH I-JOIST FLOOR SYSTEM ABOVE:  
WITH OPTION "SC1" - DRYWALL UNFINISHED BASEMENT CEILING AREA

- NOTES:**
- 1/2" GYPSUM WALL BOARD REQUIRED ON CEILING IN UNFINISHED AREAS WHEN NO SPRINKLER SYSTEM IS INSTALLED.
  - A MAXIMUM AREA OF 80 SQ FT MAY BE OMITTED AS NEEDED FOR INSTALLATION OF PLUMBING, ELECTRICAL, AND/OR HVAC (TYPICALLY AN 8'-0"x8'-0" CEILING SPACE ABOVE MECHANICAL AREA).
  - PROVIDE FIRE BLOCKING AS REQUIRED AT PERIMETER OF ANY AREAS WHERE DRYWALL HAS BEEN OMITTED.

REMARKS

| REV. NO. | DATE     | DESCRIPTION            |
|----------|----------|------------------------|
| 1        | 08/07/16 | TH - DRAWING ALIGNMENT |

NVR, Inc., owner, expressly reserves its copyright in these plans. These plans are not to be reproduced, changed, copied in any way, or used for any other project without the written consent of NVR, Inc.



|   |               |
|---|---------------|
| MODEL<br><b>PISA TORRE</b>                  | SET NO. P5TCO |
| DRAWING TITLE<br><b>BASEMENT FLOOR PLAN</b> | VERSION 02    |
| OPTION DESCRIPTION                          | DRAWN BY      |
|   | DATE:         |
|   | OPTION        |
| SHEET NO.<br><b>A-6</b>                     | 34            |

**BASEMENT FLOOR PLAN**  
SCALE: 1/4" = 1'-0"

| FIRST FLOOR JACK SCHEDULE |                               |                 |             |             |
|---------------------------|-------------------------------|-----------------|-------------|-------------|
| IDENTIFIER                | DESCRIPTION                   | OPTIONS         | ENG. NUM.   | REMARKS     |
| J01                       | JACK - (2) 2X4 SPF STUD GRADE |                 | 1051 / 1050 |             |
| J02                       | JACK - (2) 2X4 SPF STUD GRADE |                 | 1051 / 1050 |             |
| J03                       | JACK - (5) 2X4 SP#1           | SXC             | 1051        | STEEL PLATE |
| J04                       | JACK - (5) 2X4 SP#1           | SXC             | 1051        | STEEL PLATE |
| J05                       | JACK - (2) 2X4 SPF STUD GRADE | ZCC / SXC       | 1062        |             |
| J06                       | JACK - (2) 2X4 SPF STUD GRADE | ZCC / SXC       | 1062        |             |
| J15                       | JACK - (2) 2X4 SPF STUD GRADE | D6T / ZCC / SXC | 1034        |             |
| J16                       | JACK - (2) 2X4 SPF STUD GRADE | D6T / ZCC / SXC | 1034        |             |
| J67                       | JACK - (3) 2X4 SPF STUD GRADE | GCB / ZCC       | 1006        |             |
| J68                       | JACK - (3) 2X4 SPF STUD GRADE | GCB / ZCC       | 1006        |             |

| LEGEND |   |
|--------|---|
|        | BEARING WALL                            |
|        | NON BEARING WALL                        |
|        | INDICATES BEARING FROM POINT-LOAD ABOVE |
|        | JACKS                                   |
|        | BEAM/HEADER                             |
|        | PAD FOOTING                             |
|        | STEEL COLUMN                            |
|        | PORTAL FRAME                            |
|        | JOIST/TRUSS                             |
|        | LVL                                     |
|        | ENGINEERING PAGE NUMBER                 |

SEE FC DETAILS FOR FRAMING CONNECTORS

LVL PLY TO PLY FASTENING SCHEDULE:

1.A - (2) PLY UP TO AND INCLUDING 11 7/8" TALL; FASTEN PLYS W/ (2) ROWS 16D NAILS AT 12" O.C.  
 2.A - (2) PLY 14" TO AND 18" TALL (INCLUSIVE); FASTEN PLYS W/ (3) ROWS 16D NAILS AT 12" O.C.  
 3.A - (2) PLY 20" TALL AND OVER; FASTEN PLYS W/ (4) ROWS 16D NAILS AT 12" O.C.  
 4.A - (3) PLY UP TO AND INCLUDING 11 7/8" TALL; FASTEN PLYS W/ (2) ROWS 16D NAILS AT 12" O.C. FROM EACH SIDE  
 5.A - (3) PLY 14" TO AND 18" TALL (INCLUSIVE); FASTEN PLYS W/ (3) ROWS 16D NAILS AT 12" O.C. FROM EACH SIDE  
 6.A - (3) PLY 20" TALL AND OVER; FASTEN PLYS W/ (4) ROWS 16D NAILS AT 12" O.C. FROM EACH SIDE

FIELD INSTALLED FIRST FLOOR BEAM/HEADER SCHEDULE

| IDENTIFIER | DESCRIPTION | LENGTH | OPTIONS   | ENG. NUM. | REMARKS   |
|------------|-------------|--------|-----------|-----------|-----------|
| PFOI-2     | LVL - I4    | 14'-4" | GCB / ZCC | 1006      | 2 PLY, 2A |

**FLOOR PLAN NOTES**

- ALL HEADERS ARE (2) 2x6 w/ 2x4 WALLS OR (3) 2x6 w/ 2x6 WALLS, UNLESS OTHERWISE NOTED.
- ALL HEADERS TO HAVE (1) 2x4 OR 2x6 JACK EACH END, UNLESS OTHERWISE NOTED.
- ALL EXTERIOR WALLS TO BE 4" AND ALL INTERIOR WALLS TO BE 3 1/2", UNLESS OTHERWISE NOTED
- HATCHED AREAS INDICATE DROPPED CEILINGS. ALL DROPPED CEILINGS ARE 12" UNLESS OTHERWISE NOTED.
- SEE "BRACED WALL PANEL DETAIL SHEET" FOR SPECIAL WALL FRAMING LOCATIONS AND HEADER SIZES, IF APPLICABLE.
- SEE STANDARD DETAIL CATEGORY "IT" SHEET(S) FOR INTERIOR TRIM DETAILS.
- SEE ARCHITECTURAL DETAIL SHEET "AD" FOR HOUSE SPECIFIC INTERIOR TRIM OPTION TABLE.
- ALL WINDOWS HAVE T-0 1/2" HEADER HEIGHT UNLESS OTHERWISE NOTED.

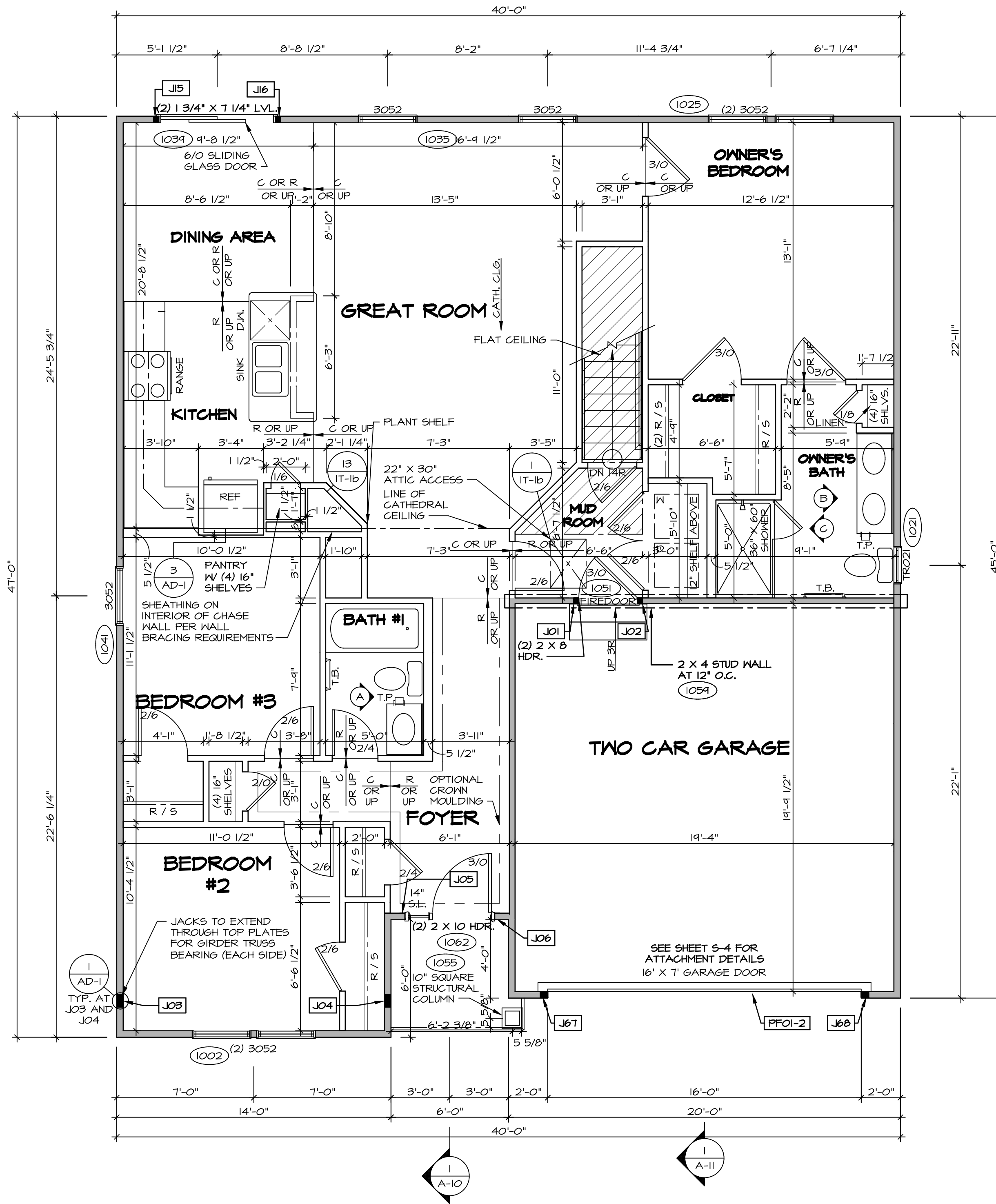
**GYPSUM NOTES**

AT GARAGE:  
 GYPSUM BOARD AT COMMON WALLS, CEILING, BEAM WRAPS AND SUPPORTS PER STANDARD DETAIL FA-1(b) FIRE ASSEMBLIES OR AS REQUIRED BY LOCAL CODE.

AT STAIRS:  
 1/2" GYPSUM BOARD AT UNDERSIDE OF STAIRS AND WALLS IN CLOSET

BASEMENT WITH 1-JOIST FLOOR SYSTEM ABOVE:  
 WITH OPTION "SG1" - DRYWALL UNFINISHED BASEMENT CEILING AREA

- NOTES:
- 1/2" GYPSUM WALL BOARD REQUIRED ON CEILING IN UNFINISHED AREAS WHEN NO SPRINKLER SYSTEM IS INSTALLED
  - A MAXIMUM AREA OF 80 SQ FT MAY BE OMITTED AS NEEDED FOR INSTALLATION OF PLUMBING, ELECTRICAL, AND/OR HVAC (TYPICALLY AN 8'-0"x8'-0" CEILING SPACE ABOVE MECHANICAL AREA).
  - PROVIDE FIRE BLOCKING AS REQUIRED AT PERIMETER OF ANY AREAS WHERE DRYWALL HAS BEEN OMITTED.



**FIRST FLOOR PLAN**  
 SCALE: 1/4" = 1'-0"

|                    |                            |          |       |
|--------------------|----------------------------|----------|-------|
| MODEL              | PISA TORRE                 | SET NO.  | PS100 |
| DRAWING TITLE      | FIRST FLOOR PLAN           | VERSION  | 02    |
| OPTION DESCRIPTION | CORNERSTONE SPECIFICATIONS | DRAWN BY |       |
|                    |                            | DATE:    |       |
|                    |                            | OPTION   |       |
| SHEET NO.          | A-7                        | 36       |       |

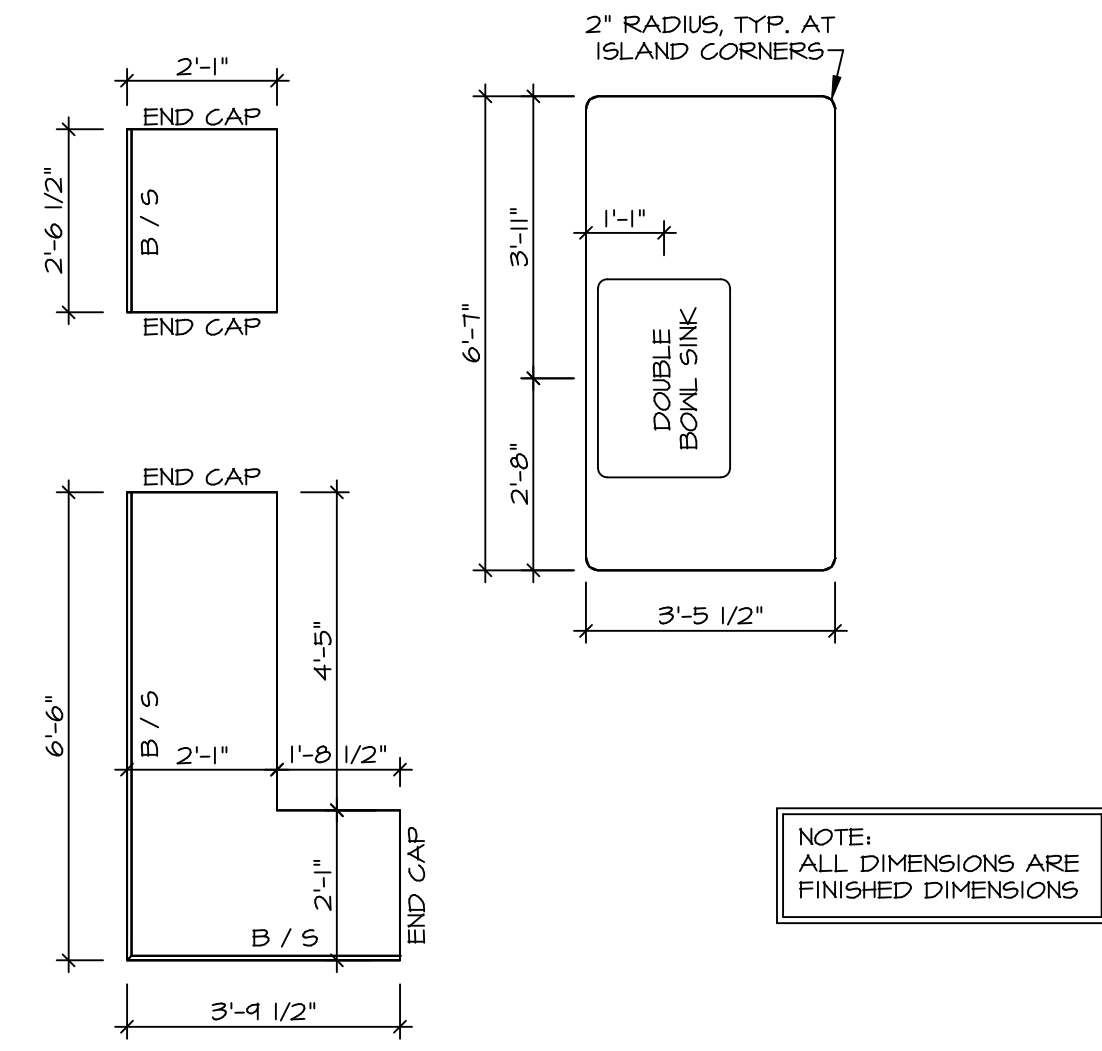
DATE: 08/01/16  
 REV. NO. 1  
 DATE: 08/01/16  
 TH - DRAWING ALIGNMENT

REMARKS

NVR, Inc., owner, expressly reserves its copyright in these plans. These plans are not to be reproduced, changed, or copied in any way without the written consent of NVR, Inc.

**NVR**  
 NVR, Inc.  
 Architectural Services  
 Architects  
 Suite 100  
 5285 Westpark Drive  
 Frederick, MD 21703

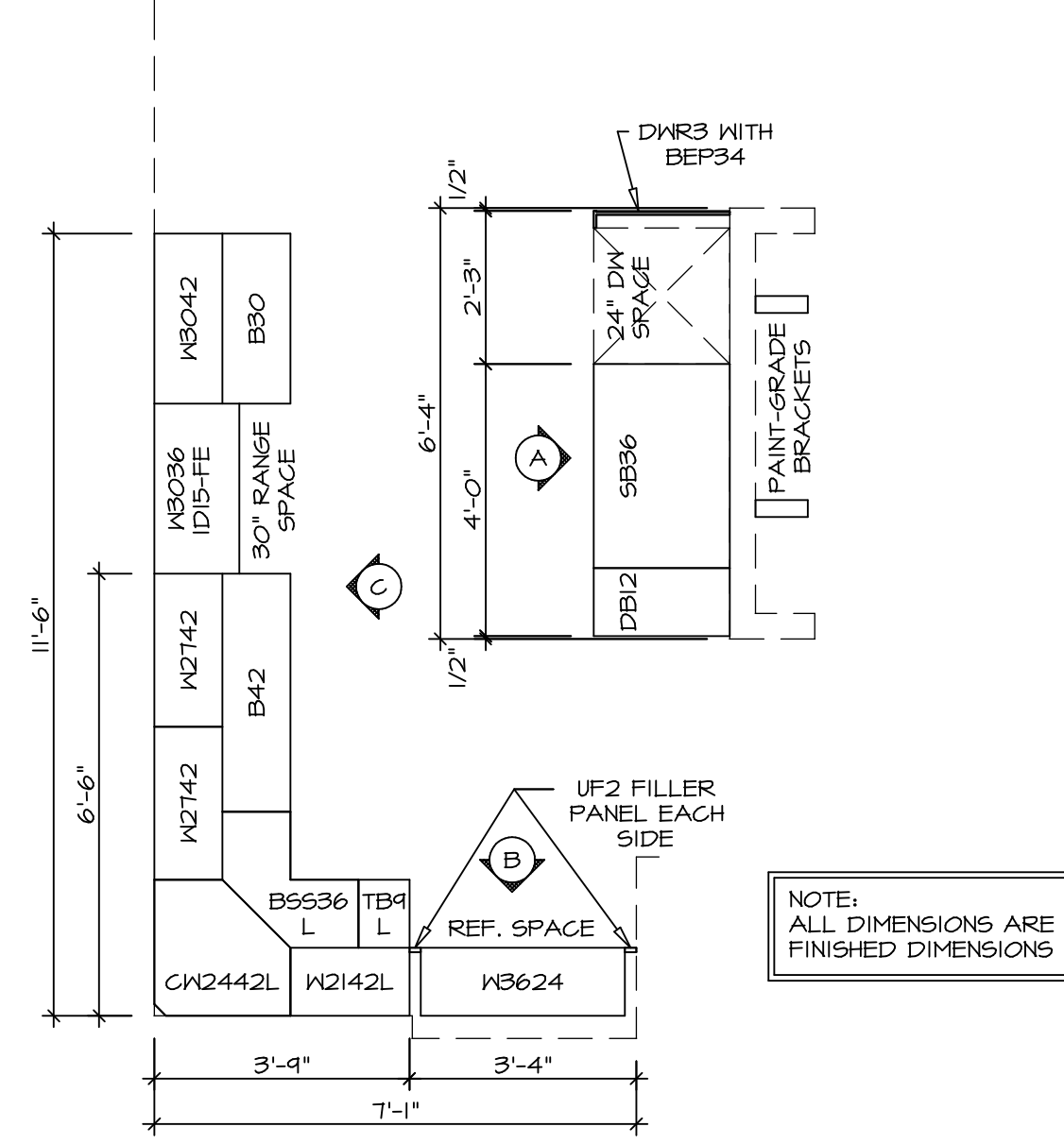
C:\NVR\Solves\PISA\_TORRE\_PS100\_02\_V01-AK-0089\1161050\Sheet\1st\_Specific\36\_A-7\_PLN1-SXC-LS.dwg 03/21/19 - 6:35 am



NOTE:  
ALL DIMENSIONS ARE  
FINISHED DIMENSIONS

(KT-3209)  
**COUNTERTOP LAYOUT**

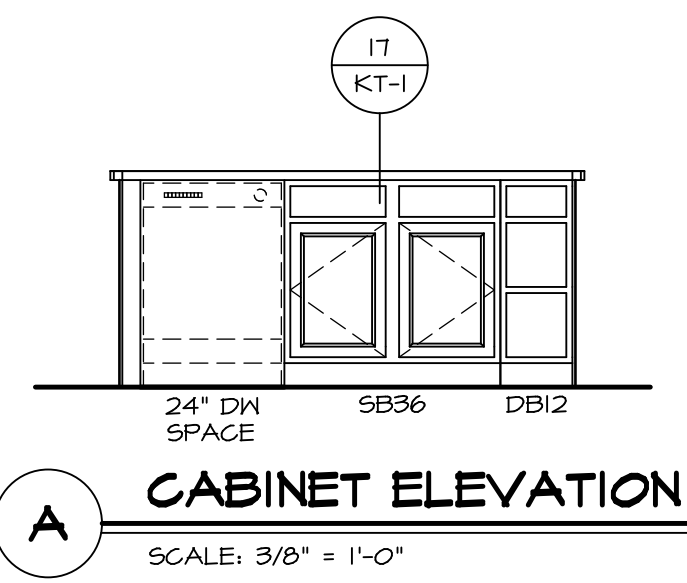
2  
A-13 SCALE: 3/8" = 1'-0"



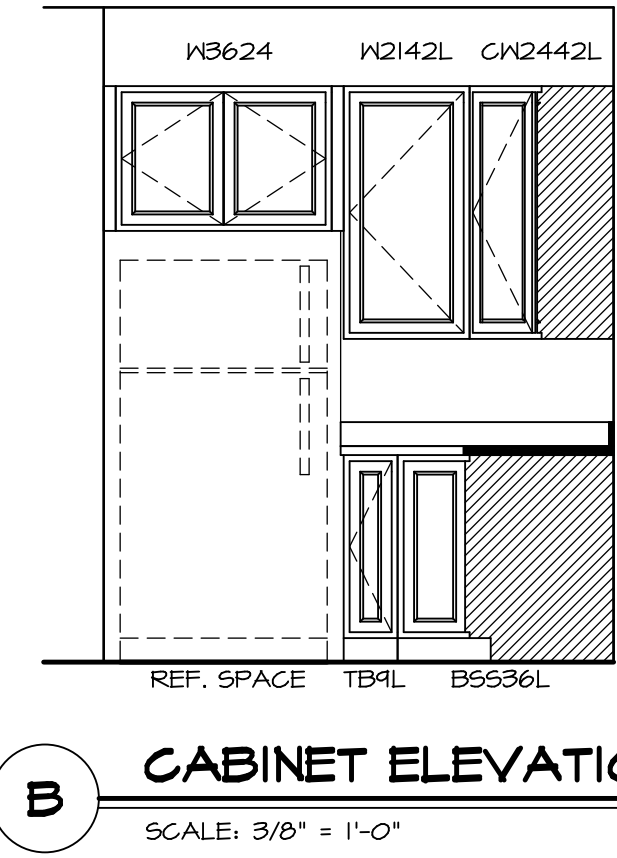
NOTE:  
ALL DIMENSIONS ARE  
FINISHED DIMENSIONS

(KC-3209)  
**CABINET LAYOUT**

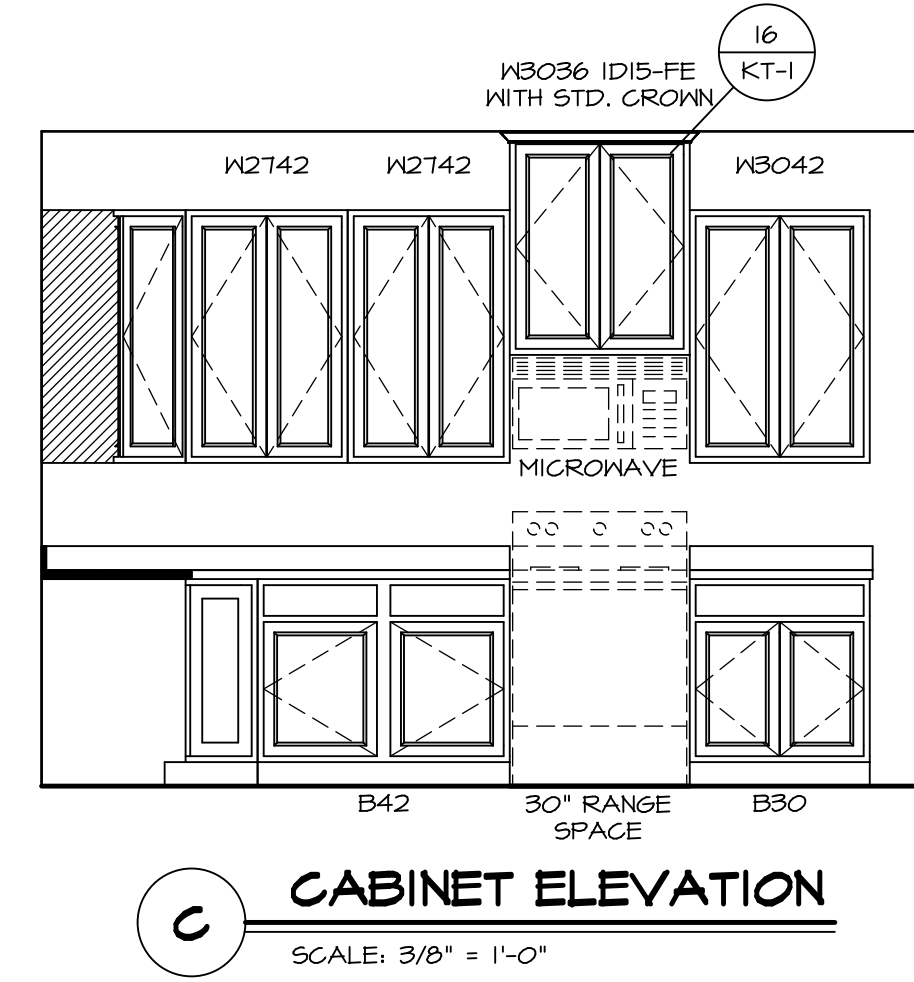
1  
A-13 SCALE: 3/8" = 1'-0"



**A CABINET ELEVATION**  
SCALE: 3/8" = 1'-0"



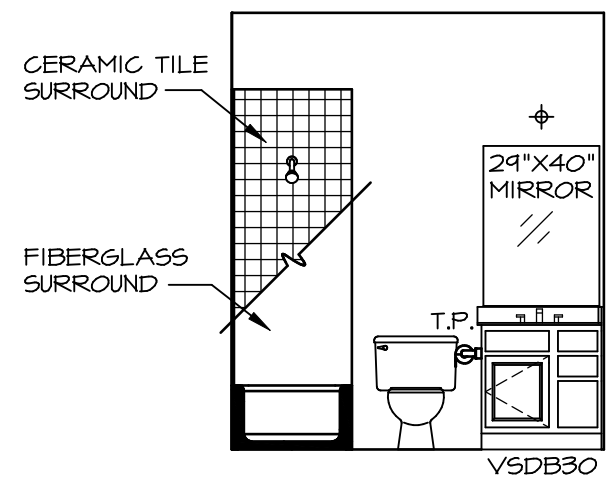
**B CABINET ELEVATION**  
SCALE: 3/8" = 1'-0"



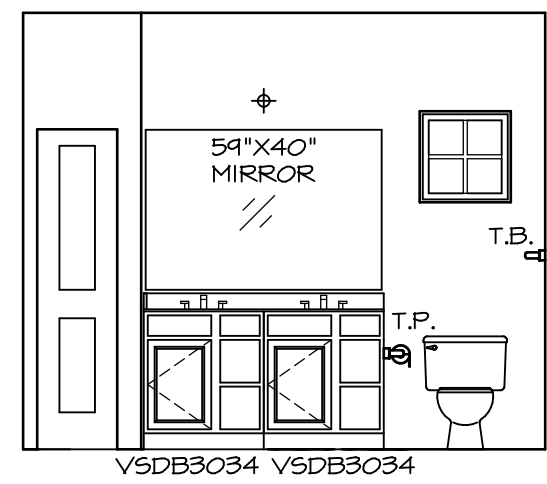
**C CABINET ELEVATION**  
SCALE: 3/8" = 1'-0"

|                          |                            |                  |                  |         |
|--------------------------|----------------------------|------------------|------------------|---------|
| SHEET NO.<br><b>A-13</b> | MODEL<br><b>PISA TORRE</b> | SET NO.<br>PSTCO | OPTION<br>OPTION | REMARKS |
|                          | DRAWING TITLE<br>KITCHENS  | VERSION<br>02    |                  |         |
| 48                       |                            |                  |                  |         |

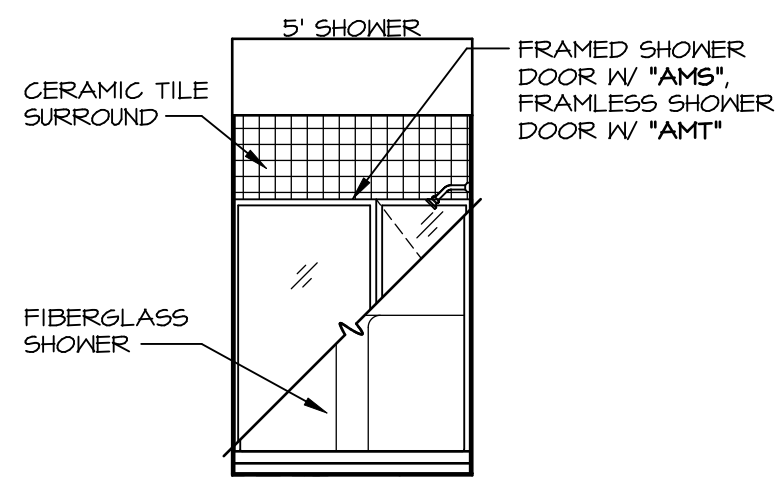
C:\NVR\Solves\PISA\_TORRE\_PSTCO\_02\_DCT-AK-0089\1161050\SheetA Lot\_Specific\48\_A-13\_KIT\_LS.dwg 03/21/15 - 6:35 am



**A BATH #1**  
SCALE: 1/4" = 1'-0"



**B OWNER'S BATH**  
SCALE: 1/4" = 1'-0"



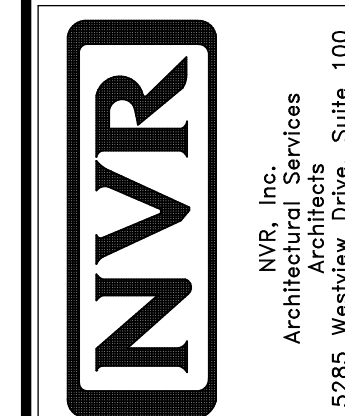
**C OWNER'S BATH**  
SCALE: 1/4" = 1'-0"

**NOTES:**

1. TEMPERED GLASS SHOWER ENCLOSURE WITH SWING DOOR OR OPTIONAL SLIDING DOOR BY DIVISION
2. TUB ACCESS PANELS PROVIDED AS NEEDED, ALL MATERIALS BY DIVISION
3. REFER TO SHEET IT-2 FOR TUB AND SHOWER DETAILS.
4. ALL V5DB24-42 DRAWERS TO BE SET ON RIGHT HAND.
5. BATH ELEVATIONS ARE SHOWN PER PLAN.

NOTES  
• WINDOWS VARY PER OPTION.

|           |                    |          |         |
|-----------|--------------------|----------|---------|
| SHEET NO. | MODEL              | SET NO.  | VERSION |
| A-14      | PISA TORRE         | PSTCO    | 02      |
|           | DRAWING TITLE      | DRAWN BY |         |
|           | BATH ELEVATIONS    | DATE:    |         |
|           | OPTION DESCRIPTION | OPTION   |         |



NVR, Inc., owner, expressly reserves its copyright in these plans. These plans are not to be reproduced, changed, copied, or used in any way without the written consent of NVR, Inc.

| REV. NO. | DATE     | REMARKS                 |
|----------|----------|-------------------------|
| 1        | 08/07/16 | TM - DRAINING ALIGNMENT |