

**SEE SHEET (A-4) FOR FOUNDATION CONNECTION INFORMATION**

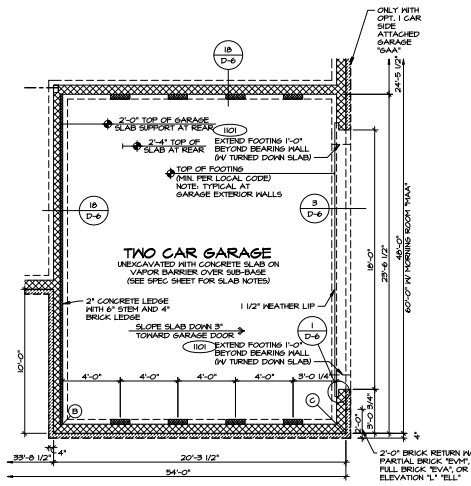
**REVISIONS**

REV. NO.	DATE	DESCRIPTION
1	02/10/14	ISSUED FOR PERMITS
2	02/10/14	REVISED PER LOCAL CODES
3	02/10/14	REVISED PER LOCAL CODES
4	02/10/14	REVISED PER LOCAL CODES
5	02/10/14	REVISED PER LOCAL CODES
6	02/10/14	REVISED PER LOCAL CODES

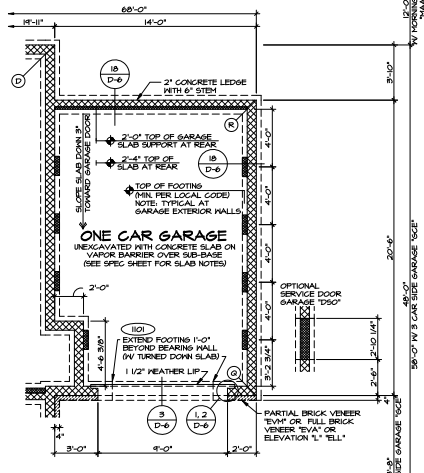
**SET NO. A1/A00**  
**FOUNDATION PLAN**  
 SHEET NO. **A-3**  
 DATE: 02/10/14  
 OFFICE: FEBA  
 PROJECT: FULL BASEMENT

**NVR**  
 NVR CONSULTING, INC.  
 2175 W. 17TH ST.  
 SUITE 100  
 DENVER, CO 80202  
 TEL: 303.733.1100  
 FAX: 303.733.1101  
 WWW.NVRCONSULTING.COM

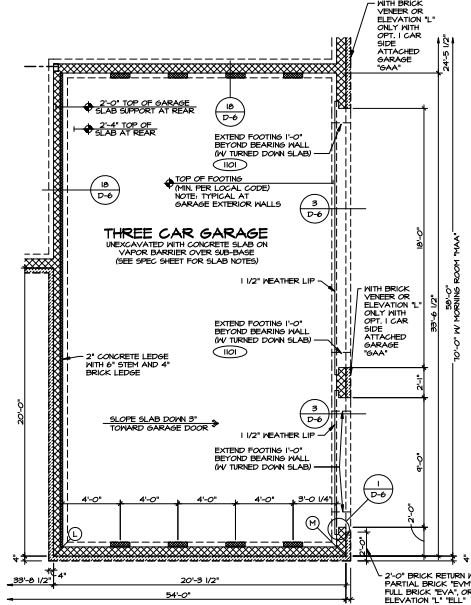
SCALE: 1/4" = 1'-0"



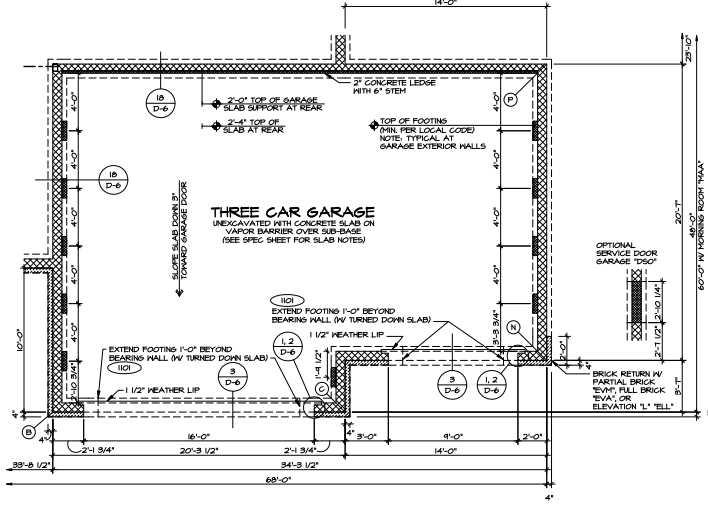
1 PARTIAL FOUNDATION PLAN  
SCALE: 1/4" = 1'-0" 2 CAR SIDE ENTRY GARAGE '10CC'



2 PARTIAL FOUNDATION PLAN  
SCALE: 1/4" = 1'-0" 1 CAR SIDE ATTACHED FRONT ENTRY GARAGE '6AA'



3 PARTIAL FOUNDATION PLAN  
SCALE: 1/4" = 1'-0" 3 CAR SIDE ENTRY GARAGE '10CC'



4 PARTIAL FOUNDATION PLAN  
SCALE: 1/4" = 1'-0" 3 CAR FRONT ENTRY GARAGE '10CF'

SEE SHEET (A-4) FOR FOUNDATION CONNECTION INFORMATION

**STEEL COLUMNS**  
COLUMN SIZE AND GRADE PER ENGINEERS AS SHOWN NEAR. REVISE ALL COLUMNS TO 3"Ø SCH. 40 (BY OPTION 'SEB')

**STRUCTURAL NOTES:**  
 BEARING HALL  
 NON BEARING HALL  
 X ENGINEERING PAGE NUMBER  
 ⊗ INDICATES BEARING FROM POINT-LOAD ABOVE

**DIAGONALS**

SIDING	BRICK
AD 66'-0 3/8"	AD 66'-5 15/8"
AE 52'-6 5/8"	AE 53'-0 1/4"
AJ 71'-4 1/8"	AJ 71'-6 15/8"
BD 52'-4 5/8"	BD 52'-6 5/8"
BJ 62'-3 13/8"	BJ 62'-8 3/4"
CG 68'-11 3/4"	CG 64'-5 3/8"
CK 63'-4 11/8"	CK 63'-4 13/8"
HD	HD 67'-8"
HE	HE 64'-6 1/8"
IJ 72'-3 5/8"	IJ 72'-4"
AP 69'-5 4/8"	AP 69'-10 1/4"
AK 76'-4 1/4"	AK 76'-6 5/8"
HP	HP 70'-3 4/8"
HR	HR 77'-5 11/8"
FM 72'-0 13/8"	FM 72'-6 5/8"
GM 78'-3"	GM 78'-6 5/8"
KM 72'-11 1/8"	KM 73'-4 1/8"
LD 61'-5 3/8"	LD 61'-10 1/2"
LJ 71'-11 3/8"	LJ 72'-4 3/4"
NS 81'-4 1/8"	NS 81'-11 3/8"
WF 71'-0 3/4"	WF 71'-6 1/8"
NK 66'-4 5/8"	NK 66'-6 13/8"
QK 50'-0 1/8"	QK 50'-6 4/8"

REVISIONS

NO.	DATE	DESCRIPTION
1	02/10/14	REVISED 3-CAR SIDE GARAGE PLAN

SET NO. AYALON FOUNDATION IS  
 SHEET BY TIES  
 DATE: 02/10/14  
 OPTION: GCC, GCE  
 2 CAR 3 CAR SIDE ATTACHED GARAGE  
 3 CAR FRONT ENTRY GARAGE  
 3 CAR FRONT ENTRY GARAGE

MODEL: A-3D  
 FOUNDATION IS - GARAGES W/ CRAWL FOUNDATION  
 SHEET NO. 25

SCALE: 1/4" = 1'-0"

DATE: 02/10/14

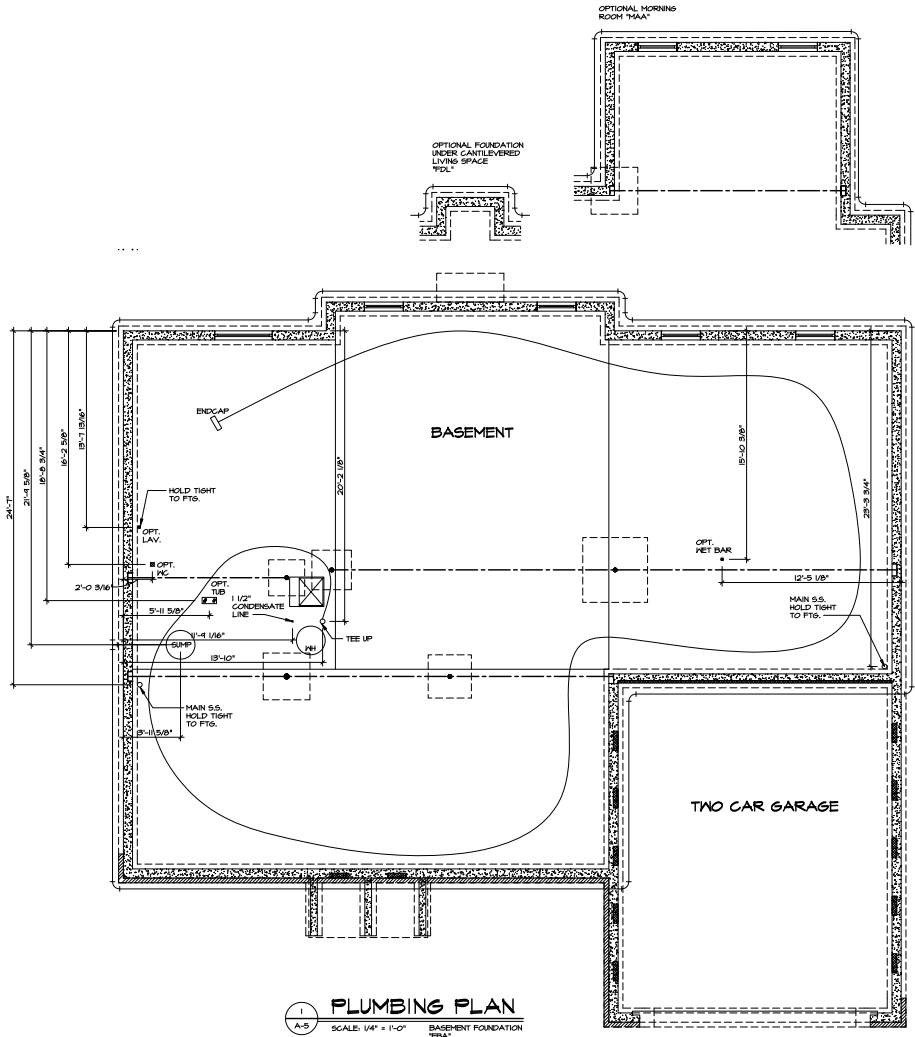
PROJECT: AYALON FOUNDATION IS - GARAGES W/ CRAWL FOUNDATION

SCALE: 1/4" = 1'-0"

DATE: 02/10/14

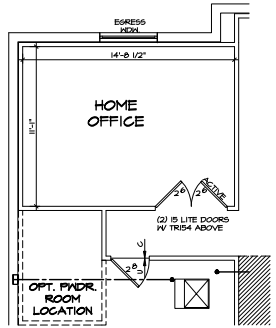
PROJECT: AYALON FOUNDATION IS - GARAGES W/ CRAWL FOUNDATION



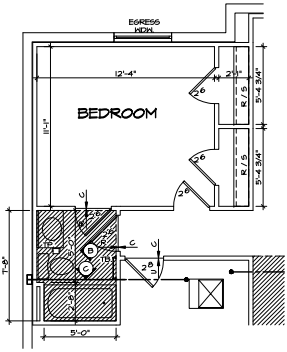


**PLUMBING PLAN**  
 SCALE: 1/4" = 1'-0"  
 BASEMENT FOUNDATION

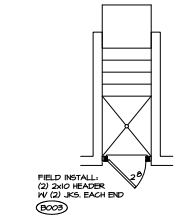
SHEET NO. <b>A-5</b> 32	MODEL <b>AYALON</b> DRAWING TITLE <b>PLUMBING PLAN</b> OPTION DESCRIPTION <b>BASEMENT FOUNDATION</b>	SET NO. <b>AV/00</b> VERSION <b>05</b> DRAWN BY <b>CAB</b> DATE: <b>02/10/14</b> OPTION <b>FBA</b>	REV. NO. <b>DATE</b> 1 <b>07/10/14</b> SGA - CREATED VERSION 14 2 <b>08/14/14</b> SGA - REVISED FOR CONVERSION 3 <b>04/21/14</b> SGA - REVISED FOR CONVERSION 4 <b>03/10/14</b> SGA - CONDENSED SHAP FILED BIDDOT	REMARKS SEE THIS SHEET, SPECIFICALLY APPROVED BY COMPANY FOR APPROVAL AND INTER-DEPARTMENTAL COORDINATION TO BE MADE BY THE DESIGNER. THE CONTRACTOR SHALL BE RESPONSIBLE FOR VERIFYING ALL DIMENSIONS AND CONDITIONS IN THE FIELD AND SHALL BE RESPONSIBLE FOR NOTIFYING THE ARCHITECT IMMEDIATELY UPON DISCOVERY OF ANY DISCREPANCY.
		NVR, Inc. 4110 West 10th Street Tulsa, Oklahoma 74107 Phone: 918.438.3172		
		PROJECT NO. <b>AV/00-18</b> SHEET NO. <b>02/14/14 - 32</b> OF <b>02/14/14 - 32</b>		



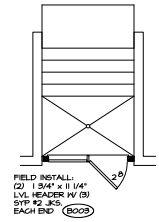
1 PARTIAL BASEMENT PLAN  
SCALE: 1/4" = 1'-0"  
HOME OFFICE "HAP"



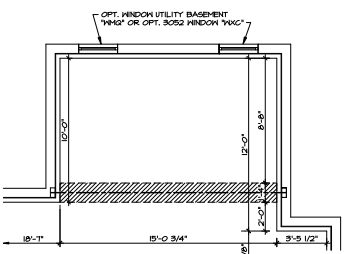
2 PARTIAL BASEMENT PLAN  
SCALE: 1/4" = 1'-0"  
BASEMENT BEDROOM "BAC"



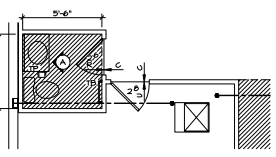
3 PARTIAL BASEMENT PLAN  
SCALE: 1/4" = 1'-0"  
SINGLE PATIO DOOR "DBC"



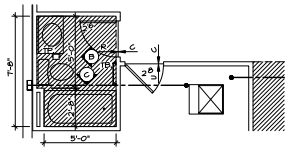
4 PARTIAL BASEMENT PLAN  
SCALE: 1/4" = 1'-0"  
3/4 DOUBLE PATIO DOOR "DQC"



10 PARTIAL BASEMENT PLAN  
SCALE: 1/4" = 1'-0"  
MORNING ROOM "MAA"



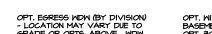
4 PARTIAL BASEMENT PLAN  
SCALE: 1/4" = 1'-0"  
BASEMENT POWDER ROOM "MPC"



3 PARTIAL BASEMENT PLAN  
SCALE: 1/4" = 1'-0"  
BASEMENT POWDER ROOM "MPC" W/ BATH "MPP"



OPT. SLIDING GLASS DOOR "DGC"  
OPT. DOUBLE PATIO DOOR "DPC"



OPT. EGRESS DOOR (BY DIVISION - LOCATION MAY VARY DUE TO GRADE OR OPTS. ABOVE. FROM WELL REQUIRED IN CERTAIN GRADE CONDITIONS (SEE SPEC SHEET FOR ADDITIONAL INFO))



OPT. HINGED UTILITY BASEMENT "HUB" OR OPT. 3052 HINGED "HUC"

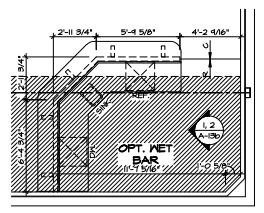


OPT. HINGED UTILITY BASEMENT "HUB" OR OPT. 3052 HINGED "HUC"

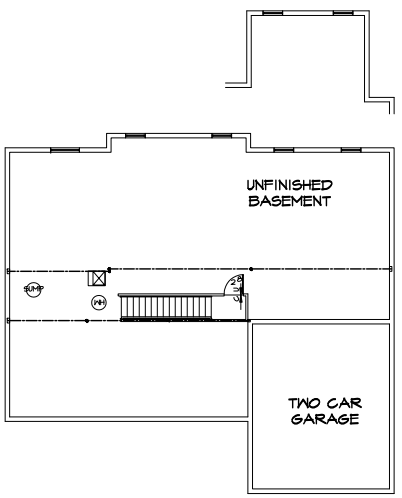
WITH OPTION "SC1" - DRYHALL UNFINISHED BASEMENT CEILING AREA

NOTES:

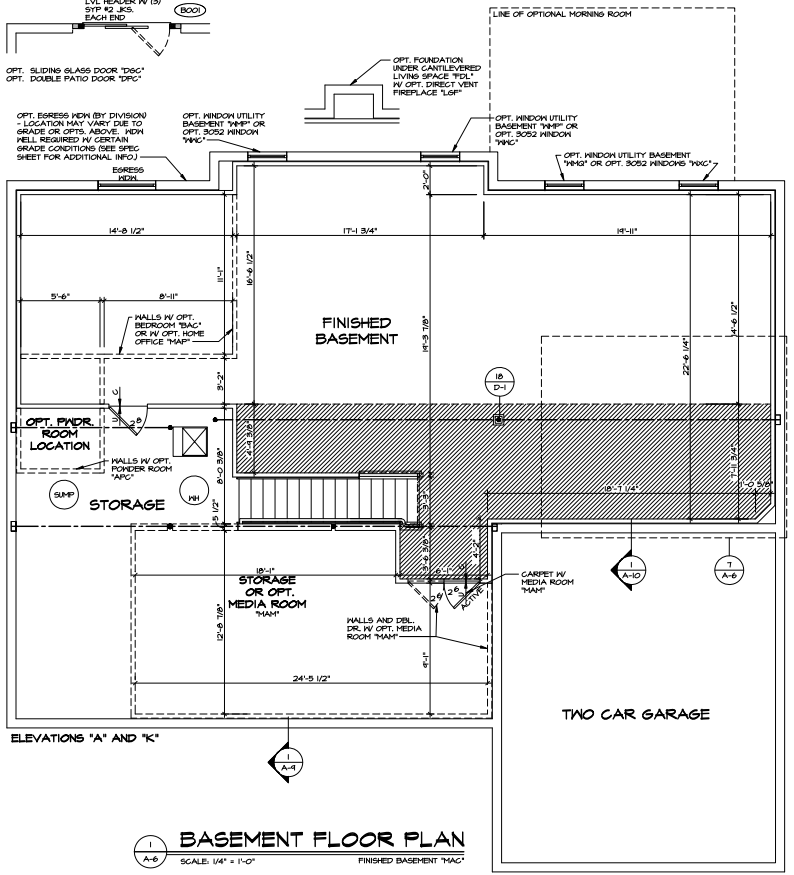
- 1/2" GYPSUM HALL BOARD REQUIRED ON CEILING IN UNFINISHED AREAS WHEN NO SPRINKLER SYSTEM IS INSTALLED.
- A MAXIMUM AREA OF 80 SQ. FT. MAY BE OMITTED AS NEEDED FOR INSTALLATION OF PLUMBING, ELECTRICAL, AND/OR HVAC. (TYPICALLY AN 8'-0" x 8'-0" CEILING SPACE ABOVE MECHANICAL AREA.)
- PROVIDE FIRE BLOCKING AS REQUIRED AT PERIMETER OF ANY AREAS WHERE DRYHALL HAS BEEN OMITTED.



7 PARTIAL BASEMENT PLAN  
SCALE: 1/4" = 1'-0"  
OPT. WET BAR "VAZ"



2 BASEMENT FLOOR PLAN  
SCALE: 1/8" = 1'-0"  
UNFINISHED BASEMENT "HEC"



1 BASEMENT FLOOR PLAN  
SCALE: 1/4" = 1'-0"  
FINISHED BASEMENT "HAC"

NOTES:

BEARING HALL  
NON BEARING HALL

(X) ENGINEERING PAGE NUMBER

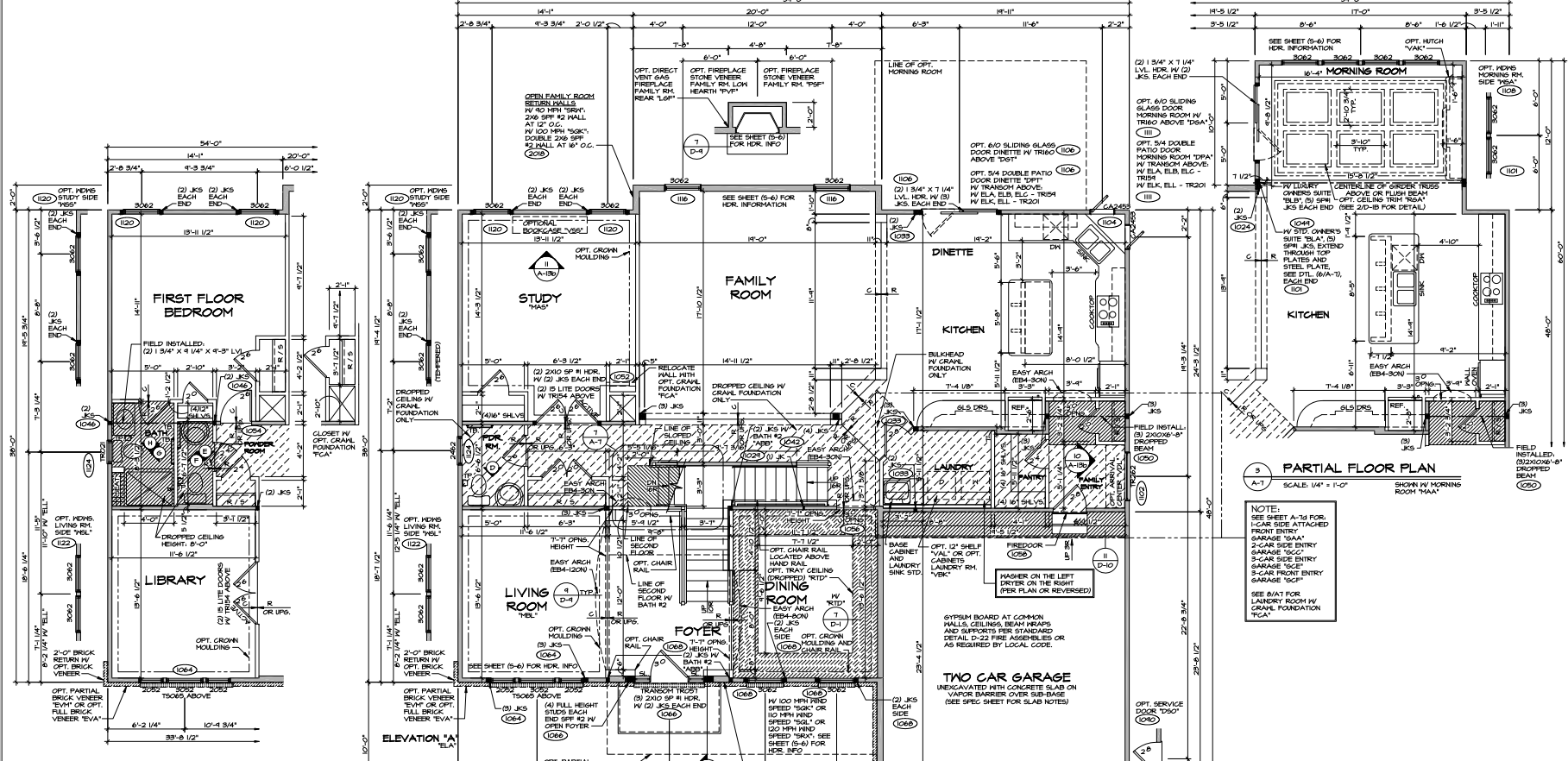
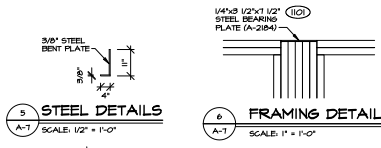
INDICATES BEARING FROM POINT-LOAD ABOVE

- ALL HEADERS ARE (2) 2x6 W/ 2x4 HALLS, UNLESS OTHERWISE NOTED.
- ALL HEADERS TO HAVE (1) 2x4 OR 2x6 JACK EACH END, UNLESS OTHERWISE NOTED.
- ALL EXTERIOR HALLS TO BE 4" AND ALL INTERIOR HALLS TO BE 3" UNLESS OTHERWISE NOTED.
- HATCHED AREAS INDICATE DROPPED CEILING.
- SEE "BRACKED HALL PANEL DETAIL SHEET" FOR SPECIAL HALL FRAMING LOCATIONS AND HEADER SIZES, IF APPLICABLE.
- SEE STANDARD DETAIL SHEET D-1 FOR TRIM OPTIONS (27 / D-U) AND DETAILS.

REV. NO.	DATE	REMARKS
1	07/10/18	SCA - GENERATED VERSION 1.4
2	07/10/18	SCA - GENERATED VERSION 1.4
3	07/10/18	SCA - GENERATED VERSION 1.4
4	07/10/18	SCA - GENERATED VERSION 1.4
5	07/10/18	SCA - GENERATED VERSION 1.4

MODEL	AYALON
DRAWING TITLE	FINISHED FLOOR PLAN
DRAWN BY	CAB
DATE	02/10/14
OPTION	F5A
OPTION DESCRIPTION	BASEMENT FOUNDATION
SHEET NO.	A-6
TOTAL SHEETS	34



**NOTE:**  
SEE SHEET A-13 FOR 1-CAR SIDE ATTACHED FRONT ENTRY GARAGE (E1A)  
2-CAR SIDE ENTRY GARAGE (E1C)  
3-CAR SIDE ENTRY GARAGE (E1D)  
4-CAR FRONT ENTRY GARAGE (E1E)  
SEE A14T FOR LAUNDRY ROOM W/ GRAVEL FOUNDATION (E1A)

- NOTES:**
- 1 BEARING WALL
  - 2 NON BEARING WALL
  - 3 ENGINEERING PHASE NUMBER
  - 4 INDICATES BEARING FROM POINT-LOAD ABOVE
  - 5 ALL HEADERS ARE (2) 2x6 W/ 2x4 HALLS OR (2) 2x6 W/ 2x6 HALLS, UNLESS OTHERWISE NOTED.
  - 6 ALL HEADERS TO HAVE (1) 2x4 OR 2x6 JACK EACH END UNLESS OTHERWISE NOTED.
  - 7 ALL INTERIOR WALLS TO BE 4" AND ALL INTERIOR WALLS TO BE 3 1/2", UNLESS OTHERWISE NOTED.
  - 8 HATCHED AREAS INDICATE DROPPED CEILING.
  - 9 SEE BRACED WALL PANEL DETAIL SHEET FOR SPECIAL WALL BRACING LOCATIONS AND HEADER SIZES, IF APPLICABLE.
  - 10 SEE STANDARD DETAIL SHEET D1 FOR TRIM OPTIONS (D1 / D1-J) AND DETAILS.
  - 11 ALL WINDOWS HAVE 9'-0" 1/2" HEADER HEIGHT UNLESS OTHERWISE NOTED.

REV. NO.	DATE	DESCRIPTION
1	02/10/14	ISSUED FOR PERMIT
2	02/10/14	REVISIONS
3	02/10/14	REVISIONS
4	02/10/14	REVISIONS
5	02/10/14	REVISIONS
6	02/10/14	REVISIONS
7	02/10/14	REVISIONS
8	02/10/14	REVISIONS
9	02/10/14	REVISIONS
10	02/10/14	REVISIONS

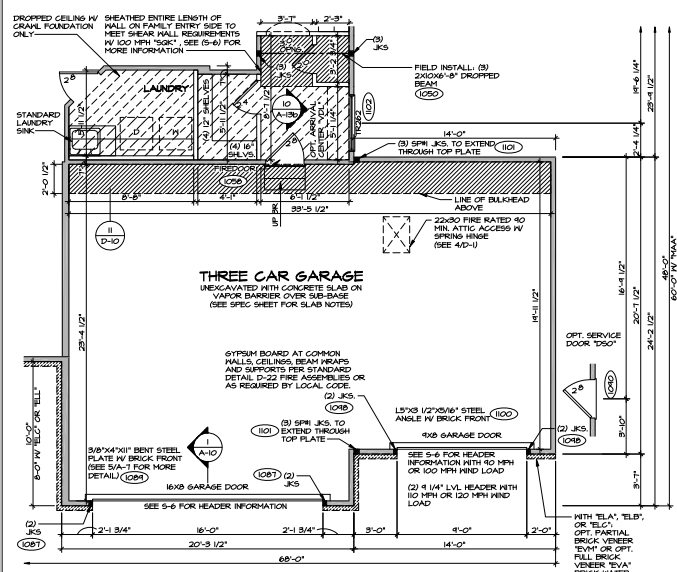
**REVISIONS:**

1. 02/10/14 - ISSUED FOR PERMIT
2. 02/10/14 - REVISIONS
3. 02/10/14 - REVISIONS
4. 02/10/14 - REVISIONS
5. 02/10/14 - REVISIONS
6. 02/10/14 - REVISIONS
7. 02/10/14 - REVISIONS
8. 02/10/14 - REVISIONS
9. 02/10/14 - REVISIONS
10. 02/10/14 - REVISIONS

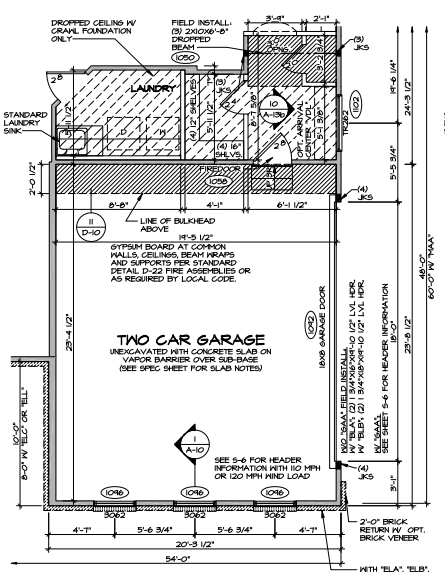
**MODEL:** AYALON  
**DRAWING TITLE:** FIRST FLOOR PLAN  
**SHEET NO.:** A-7  
**DATE:** 02/10/14  
**OPTION DESCRIPTION:** OPTION

**NVR**  
NVR ENGINEERING & ARCHITECTURE  
2175 W. 13TH AVE. SUITE 100  
DENVER, CO 80202  
TEL: 303.733.1100  
WWW.NVR.COM

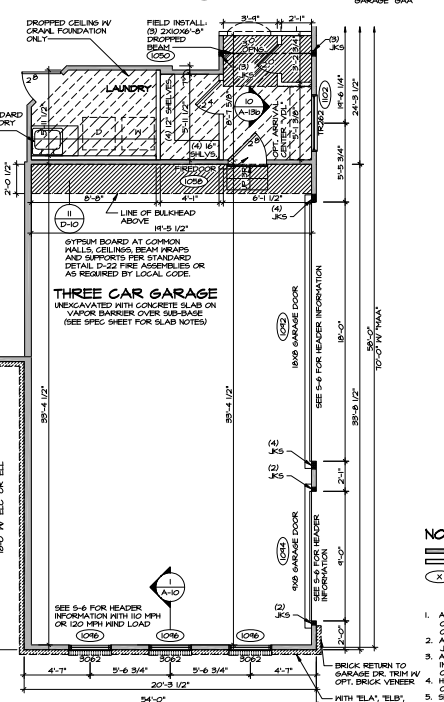
**35**



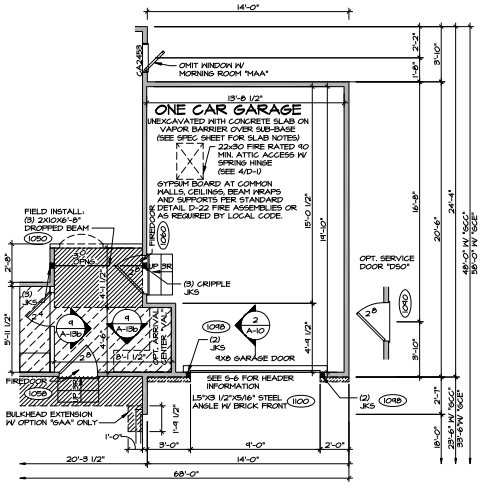
**3 PARTIAL FLOOR PLAN**  
SCALE: 1/4" = 1'-0"  
3-CAR FRONT ENTRY GARAGE '6CF'



**2 PARTIAL FLOOR PLAN**  
SCALE: 1/4" = 1'-0"  
2-CAR SIDE ENTRY GARAGE '6CG'



**1 PARTIAL FLOOR PLAN**  
SCALE: 1/4" = 1'-0"  
2-CAR SIDE ENTRY GARAGE '6CC'



**4 PARTIAL FLOOR PLAN**  
SCALE: 1/4" = 1'-0"  
1-CAR SIDE ATTACHED GARAGE '6AA'

**NOTE:**  
'6AA' ONLY AVAILABLE WITH  
2ND CAR SIDE ENTRY  
GARAGE '6CG'  
THREE CAR SIDE ENTRY  
GARAGE '6CF'

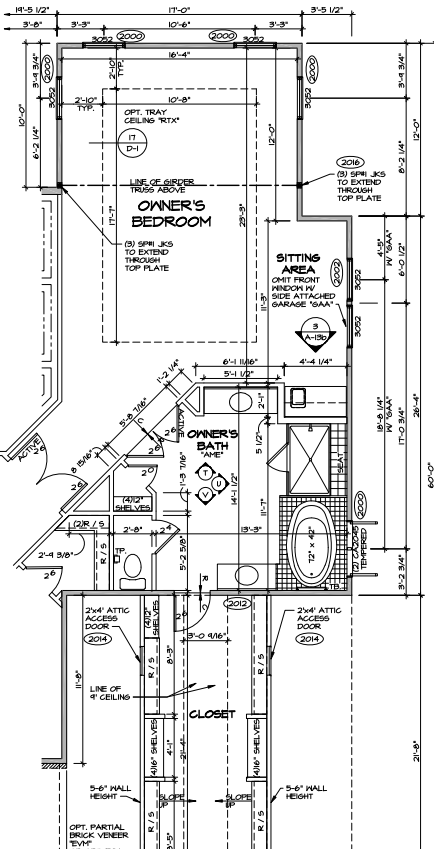
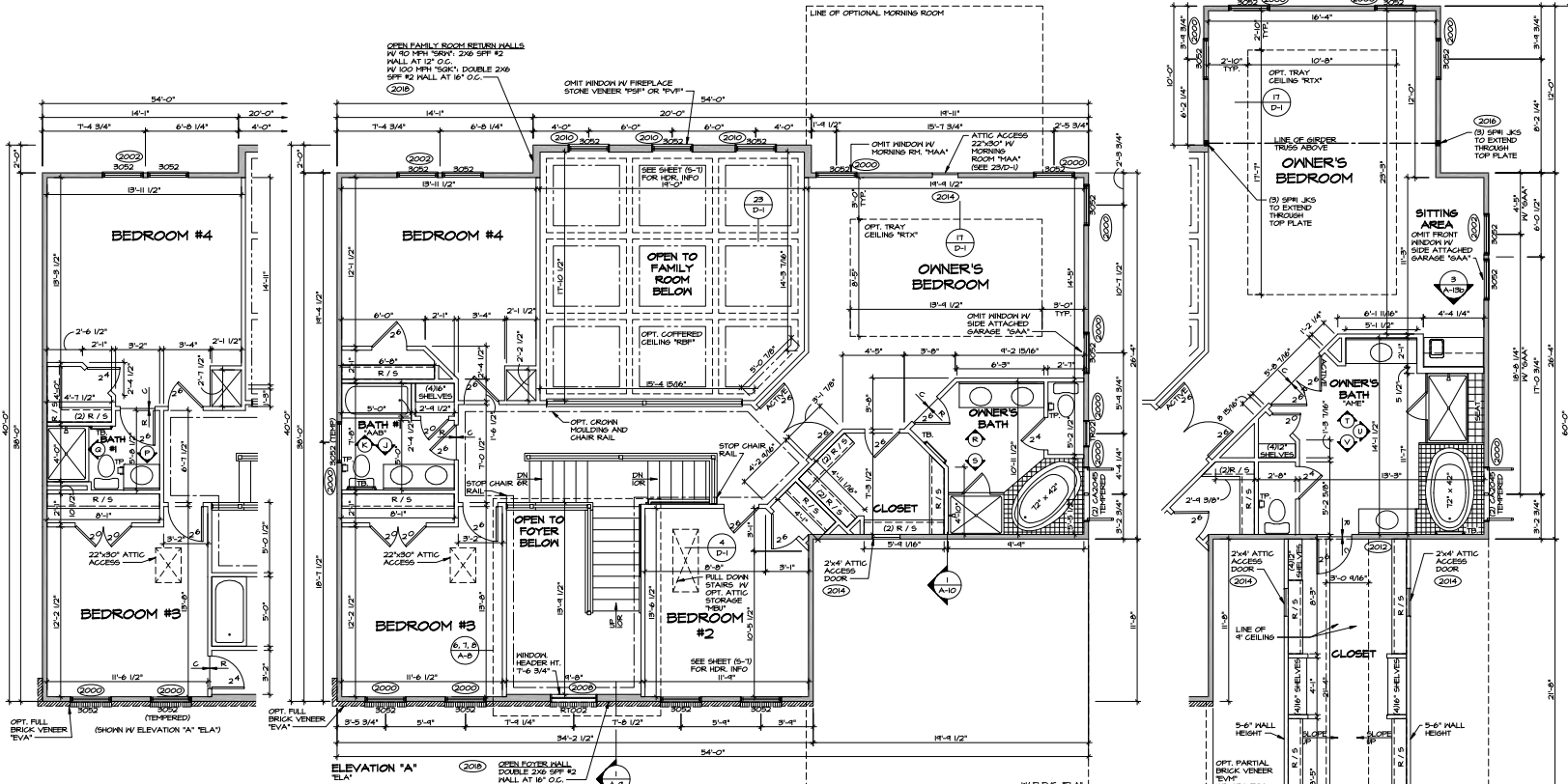
**NOTES:**

- 1. ALL HEADERS ARE (2) 2x6 W/ 2x4 WALLS OR (3) 2x6 W/ 2x6 WALLS, UNLESS OTHERWISE NOTED.
- 2. ALL HEADERS TO HAVE (1) 2x4 OR 2x6 JACK EACH END UNLESS OTHERWISE NOTED.
- 3. ALL EXTERIOR WALLS TO BE 4" AND ALL INTERIOR WALLS TO BE 3 1/2" UNLESS OTHERWISE NOTED.
- 4. HATCHED AREAS INDICATE DROPPED CEILING.
- 5. SEE 'BRICKED MALL PANEL DETAIL SHEET' FOR SPECIAL MALL FRAMING LOCATIONS AND HEADERS SIZES IF APPLICABLE.
- 6. SEE STANDARD DETAIL SHEET D-1 FOR TRIM OPTIONS (2/1, 3/1) AND DETAILS.
- 7. ALL WINDOWS HAVE 8'-0" (2) HEADER HEIGHT UNLESS OTHERWISE NOTED.

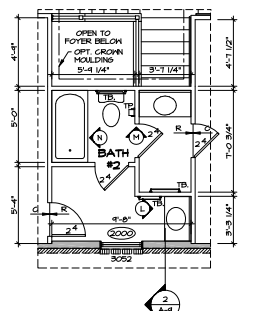
REV.	NO.	DATE	DESCRIPTION
1	1	02/10/14	ISSUED FOR PERMITS
2	2	02/10/14	REVISIONS
3	3	02/10/14	REVISIONS
4	4	02/10/14	REVISIONS



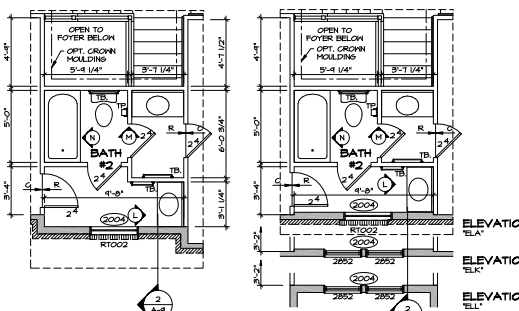
MODEL: AYALON	SET NO. AY/AVO
DRAWING TITLE: PARTIAL FLOOR PLANS	VERSION: 05
DESIGNED BY: CAB	DATE: 02/10/14
CHECKED BY: JCS	OPTION: GAA
DATE: 02/10/14	OPTION: GAA
PROJECT NO. 14-0000000000	OPTION: GCF
SHEET NO. A-7d	OPTION: GCF
TOTAL SHEETS: 36	



**2 PARTIAL FLOOR PLAN**  
SCALE: 1/4" = 1'-0"  
BATHROOM #1 "AAH"



**1 SECOND FLOOR PLAN**  
SCALE: 1/4" = 1'-0"  
SHOWS IV STANDARD OWNER'S SUITE TELA



**8 PARTIAL FLOOR PLAN**  
SCALE: 1/4" = 1'-0"  
BATHROOM #2 "ABB" IV ELEVATION "B" TELB

**7 PARTIAL FLOOR PLAN**  
SCALE: 1/4" = 1'-0"  
BATHROOM #2 "ABB" IV ELEVATION "C" TELC

**6 PARTIAL FLOOR PLAN**  
SCALE: 1/4" = 1'-0"  
BATHROOM #2 "ABB"

**5 PARTIAL FLOOR PLAN**  
SCALE: 1/4" = 1'-0"  
OWNER'S BATH IV, BOWEN SHOWER "AHO" IV, LUXURY OWNER'S SUITE TELB ONLY

**4 PARTIAL FLOOR PLAN**  
SCALE: 1/4" = 1'-0"  
LUXURY OWNER'S SUITE TELB IV THREE CAR SIDE ENTRY GARAGE "CCB"

**NOTES:**

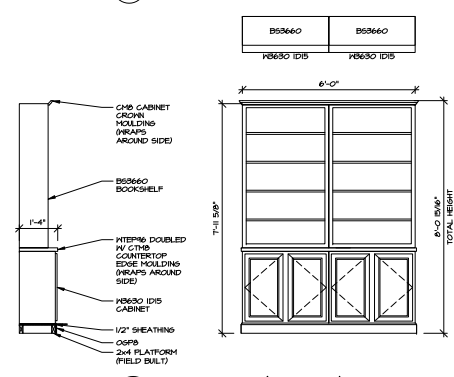
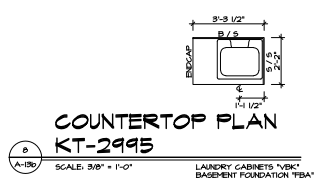
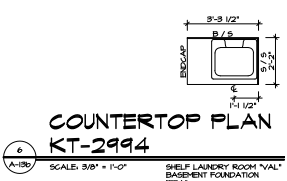
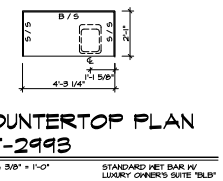
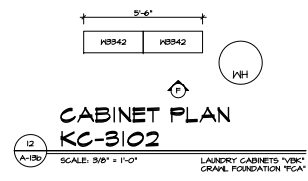
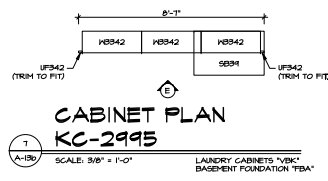
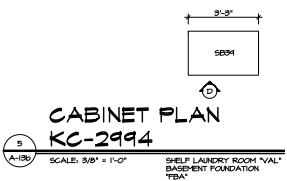
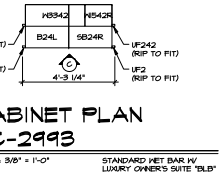
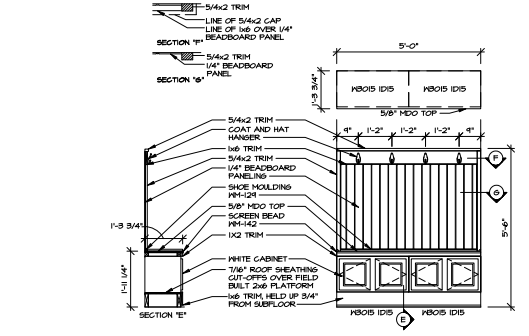
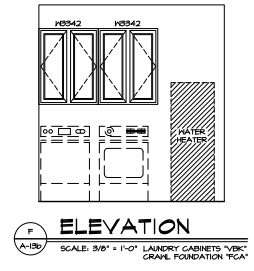
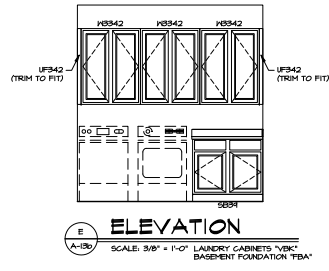
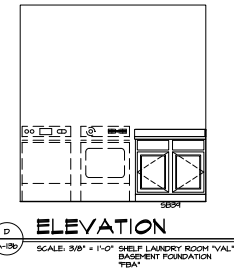
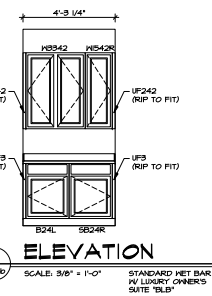
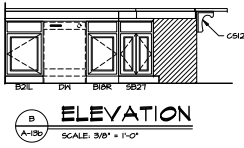
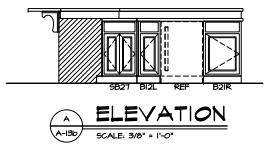
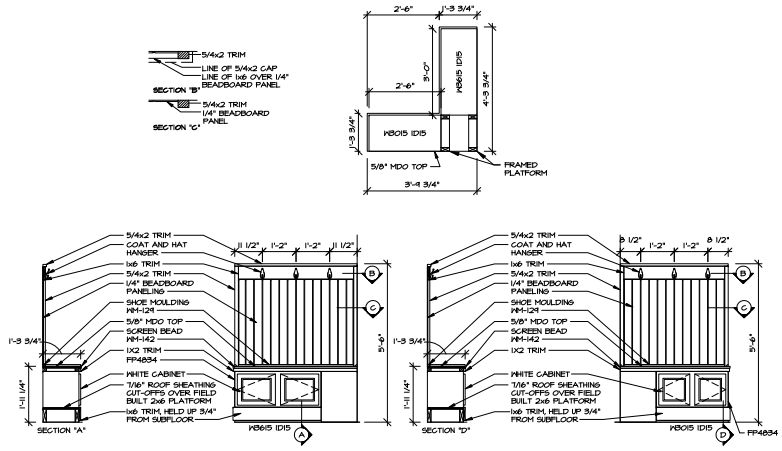
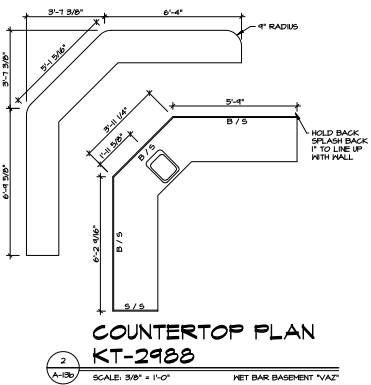
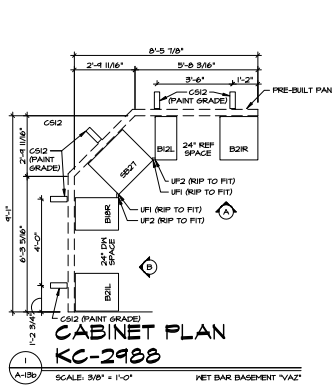
- 1. ALL HEADERS ARE (2) 2x6 W/ 2x4 HALLS OR (3) 2x6 W/ 2x6 HALLS, UNLESS OTHERWISE NOTED.
- 2. ALL EXTERIORS TO HAVE (1) 2x4 OR 2x6 JACK EACH END UNLESS OTHERWISE NOTED.
- 3. ALL EXTERIOR WALLS TO BE 4" AND ALL INTERIOR WALLS TO BE 3 1/2", UNLESS OTHERWISE NOTED.
- 4. MATCHED AREAS INDICATE DROPPED CEILING.
- 5. SEE BRACKETED HALL PANEL DETAIL SHEET FOR SPECIAL HALL FRAMING LOCATIONS AND HEADER SIZES, IF APPLICABLE.
- 6. SEE STANDARD DETAIL SHEET D-1 FOR 19KH OPTIONS (D1 / D2) AND DETAILS.

REV. NO.	DATE	REMARKS
1	02/10/14	ISSUED FOR PERMITS
2	02/10/14	ISSUED FOR PERMITS
3	02/10/14	ISSUED FOR PERMITS
4	02/10/14	ISSUED FOR PERMITS
5	02/10/14	ISSUED FOR PERMITS
6	02/10/14	ISSUED FOR PERMITS
7	02/10/14	ISSUED FOR PERMITS
8	02/10/14	ISSUED FOR PERMITS



SET NO. AV/AV00  
DESIGNED BY CAB  
DATE: 02/10/14  
OPTION

MODEL: AV/AV00  
DRAWING TITLE: SECOND FLOOR PLAN  
SHEET NO.: A-8  
OPTION DESCRIPTION



REV. NO.	DATE	REMARKS
1	02/10/14	ISSUE FOR PERMIT
2	02/10/14	REVISED PER PERMIT COMMENTS
3	02/10/14	REVISED PER PERMIT COMMENTS
4	02/10/14	REVISED PER PERMIT COMMENTS
5	02/10/14	REVISED PER PERMIT COMMENTS
6	02/10/14	REVISED PER PERMIT COMMENTS

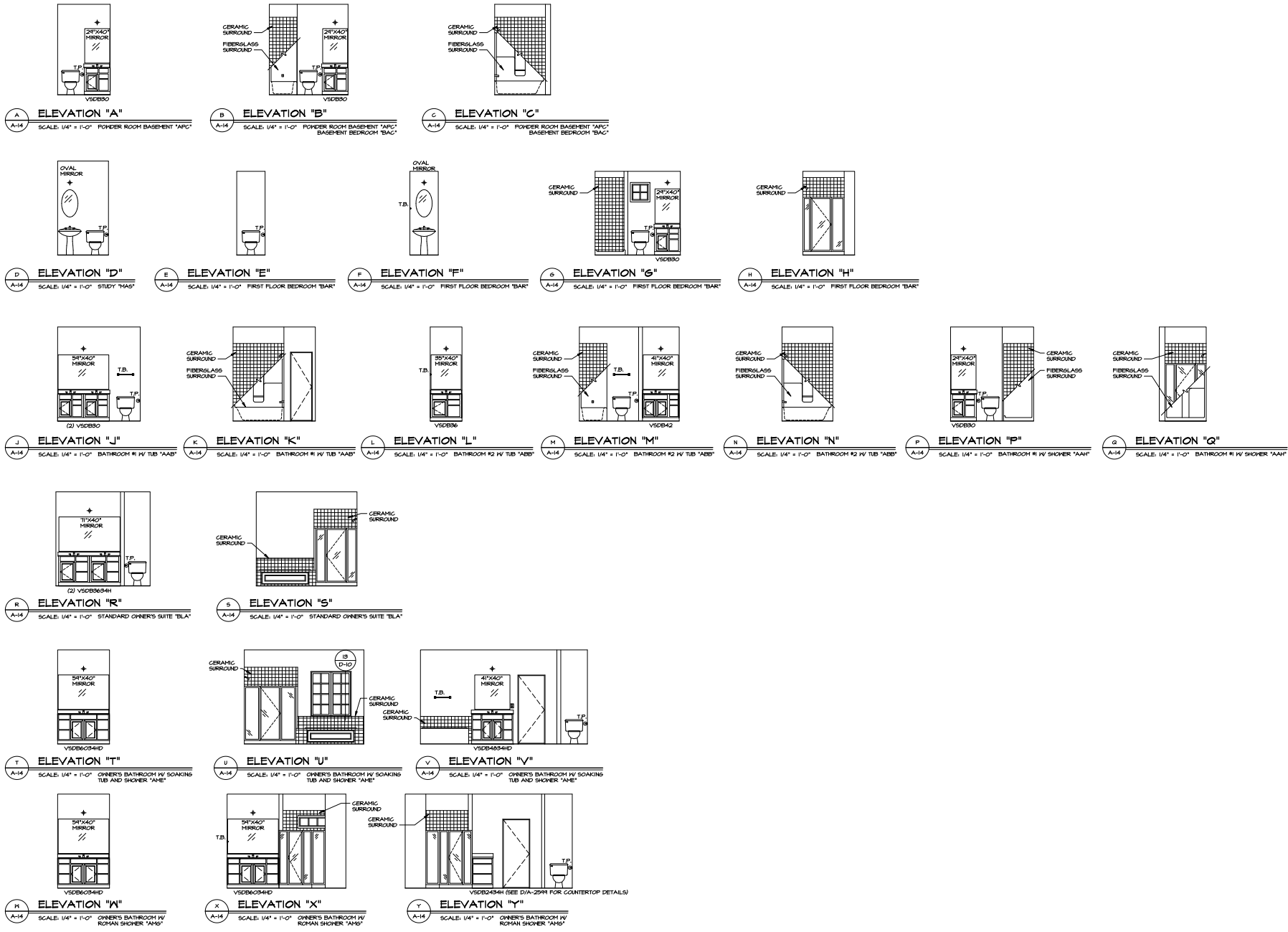
  

<b>MODEL:</b> AYALON <b>VERSION:</b> 15 <b>DATE:</b> 02/10/14 <b>OPTION:</b> VAL / VBK <b>DESCRIPTION:</b> LAUNDRY SHELF / LAUNDRY CABINETS / NET BAR BASEMENT / NET BAR L.O.S.	<b>SET NO. AYALON:</b> <b>VERSION 15</b> <b>DATE:</b> 02/10/14 <b>OPTION:</b> VAL / VBK <b>DESCRIPTION:</b> LAUNDRY SHELF / LAUNDRY CABINETS / NET BAR BASEMENT / NET BAR L.O.S.
---	--

<b>REV. NO.:</b> A-18b <b>DATE:</b> 02/10/14 <b>DESCRIPTION:</b> BOOKSHELF "V58"	<b>SCALE:</b> 1/2" = 1'-0" <b>PROJECT:</b> 1174242-1-10-100
--	--





REV. NO.	DATE	REMARKS
1	10/10/14	SCALE - CERAMIC SURROUND 14 TO ELEVATIONS "B", "C", "F", "H", "J", "K", "L", "M", "N", "P", "Q", "R", "S", "T", "U", "V", "W", "X", "Y"
2	10/14/14	CEL - CERAMIC SURROUND 14
3		
4		
5		

NVR  
 NVR, Inc.  
 4400 West 10th Street  
 Suite 100  
 Minneapolis, MN 55410  
 Tel: 612.339.1111  
 Fax: 612.339.1112

SET NO. A-1400  
 VERSION 05  
 DRAWN BY CEL  
 DATE: 02/10/14  
 OPTION

MODEL: AYALON  
 DRAWING TITLE: BATHROOM ELEVATIONS  
 SHEET NO. A-14  
 OPTION DESCRIPTION  
 54

A:\PROJECTS\BATHROOM ELEVATIONS - AYALON - 05-09-14 - 252 - 01