

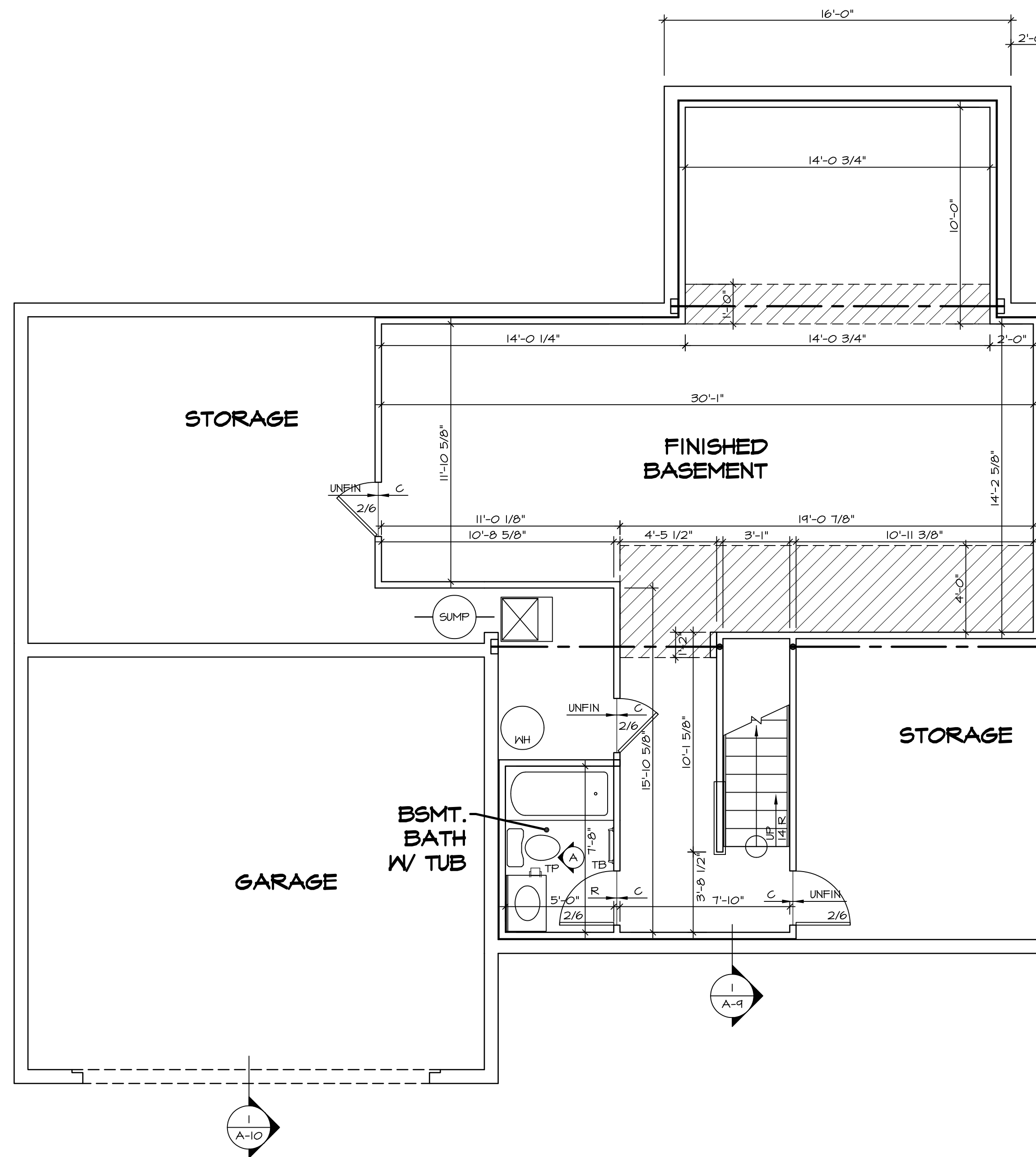
1 PLUMBING PLAN
A-5 SCALE: 1/4" = 1'-0"

SHEET NO.	MODEL	SET NO.	VERSION	DRAWN BY	DATE:	OPTION
A-5	PALERMO DRAWING TITLE PLUMBING PLAN	PALOO	03			
48						

NVR
NVR, Inc.
Architectural Services
5285 Westpark Drive, Suite 100
Frederick, MD 21703

NVR, Inc., owner, expressly reserves its copyright in these plans. These plans are not to be reproduced, changed, adapted in any way, or used for any purpose not intended by NVR, Inc. without the written consent of NVR, Inc.

REV. NO.	DATE	REMARKS



LEGEND

- BEARING WALL
- NON BEARING WALL
- INDICATES BEARING FROM POINT-LOAD ABOVE
- JACKS
- BEAM/HEADER
- PAD FOOTING
- STEEL COLUMN
- PORTAL FRAME
- JOIST/TRUSS
- LVL
- ENGINEERING PAGE NUMBER

SEE FC DETAILS FOR FRAMING CONNECTORS

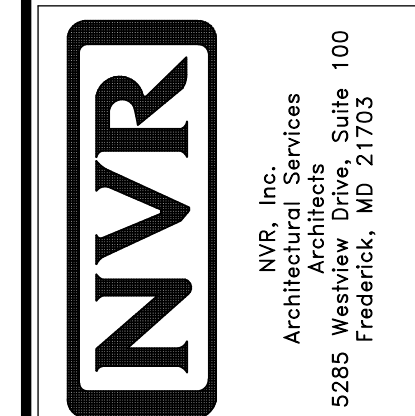
- FLOOR PLAN NOTES**
1. ALL HEADERS ARE (2) 2x6 w/ 2x4 WALLS OR (3) 2x6 w/ 2x6 WALLS, UNLESS OTHERWISE NOTED.
 2. ALL HEADERS TO HAVE (1) 2x4 OR 2x6 JACK EACH END, UNLESS OTHERWISE NOTED.
 3. ALL EXTERIOR WALLS TO BE 4" AND ALL INTERIOR WALLS TO BE 3 1/2", UNLESS OTHERWISE NOTED.
 4. HATCHED AREAS INDICATE DROPPED CEILINGS. ALL DROPPED CEILINGS ARE 12" UNLESS OTHERWISE NOTED.
 5. SEE "BRACED WALL PANEL DETAIL SHEET" FOR SPECIAL WALL FRAMING LOCATIONS AND HEADER SIZES, IF APPLICABLE.
 6. SEE STANDARD DETAIL CATEGORY "IT" SHEET(S) FOR INTERIOR TRIM DETAILS.
 7. SEE ARCHITECTURAL DETAIL SHEET "AD" FOR HOUSE SPECIFIC INTERIOR TRIM OPTION TABLE.
 8. ALL WINDOWS HAVE 7'-0 1/2" HEADER HEIGHT UNLESS OTHERWISE NOTED.
 9. ALL CASED OPENINGS AT T-11, UNLESS OTHERWISE NOTED.

- GYPSUM NOTES**
- AT GARAGE:
GYPSUM BOARD AT COMMON WALLS, CEILING, BEAM WRAPS AND SUPPORTS PER STANDARD DETAIL FA-1(b) FIRE ASSEMBLIES OR AS REQUIRED BY LOCAL CODE.
- AT STAIRS:
1/2" GYPSUM BOARD AT UNDERSIDE OF STAIRS AND WALLS IN CLOSET

BASEMENT FLOOR PLAN
SCALE: 1/4" = 1'-0"

SHEET NO. A-6	MODEL PALERMO	SET NO. PALOO	REMARKS
51	DRAWING TITLE BASEMENT FLOOR PLAN	VERSION 03	
	OPTION DESCRIPTION	DRAWN BY	
		DATE:	
		OPTION	

NVR, Inc., owner, expressly reserves its common law copyright in these architectural plans. These plans are not to be reproduced, changed, copied in any way, or otherwise used without the prior written consent of NVR, Inc.



FIRST FLOOR JACK SCHEDULE				
IDENTIFIER	DESCRIPTION	OPTIONS	ENG. NUM.	REMARKS
J101	JACK - (2) 2x4 SPF STUD GRADE		1072	
J102	JACK - (2) 2x4 SPF STUD GRADE		1072	
J106	JACK - (2) 2x4 SPF STUD GRADE		1012	
J107	JACK - (2) 2x4 SPF STUD GRADE		1012	
J108	JACK - (2) 2x4 SPF STUD GRADE		1012	
J109	JACK - (2) 2x4 SPF STUD GRADE	6CB	1046	
J110	JACK - (3) 2x4 SPF STUD GRADE	6CB	1046	
J120	JACK - (4) 2x6 SPF STUD GRADE	MAA	1014	
J121	JACK - (3) 2x6 SPF STUD GRADE	MAA	1014	FIELD INSTALLED
J122	JACK - (3) 2x4 SPF STUD GRADE	SRN	1040	
J130	JACK - (2) 2x4 SPF STUD GRADE	ELL	1029	
J131	JACK - (2) 2x4 SPF STUD GRADE	ELL	1029	
J132	JACK - (2) 2x4 SPF STUD GRADE	ELL	1029	
J167	JACK - (2) 2x4 SPF STUD GRADE	L66	1082	
J168	JACK - (2) 2x4 SPF STUD GRADE	L66	1082	

LVL PLY TO PLY FASTENING SCHEDULE:

1A - (2) FLY UP TO AND INCLUDING 1 7/8" TALL; FASTEN FLIES W/ (2) ROWS 16D NAILS AT 12" O.C.
 2A - (2) FLY 14" TO AND INCLUDING 18" TALL (INCLUSIVE); FASTEN FLIES W/ (3) ROWS 16D NAILS AT 12" O.C.
 3A - (2) FLY 20" TALL AND OVER; FASTEN FLIES W/ (4) ROWS 16D NAILS AT 12" O.C.
 4A - (3) FLY UP TO AND INCLUDING 1 7/8" TALL; FASTEN FLIES W/ (2) ROWS 16D NAILS AT 12" O.C. FROM EACH SIDE
 5A - (3) FLY 14" TO AND INCLUDING 18" TALL (INCLUSIVE); FASTEN FLIES W/ (3) ROWS 16D NAILS AT 12" O.C. FROM EACH SIDE
 6A - (3) FLY 20" TALL AND OVER; FASTEN FLIES W/ (4) ROWS 16D NAILS AT 12" O.C. FROM EACH SIDE

FIRST FLOOR BEAM/HEADER SCHEDULE					
IDENTIFIER	DESCRIPTION	LENGTH	OPTIONS	ENG. NUM.	REMARKS
B101-3	LVL - 16	14'-4 1/2"	MAA	1014	5A, FIELD INSTALL
B106-2	LVL - 16	17'-4"	ZSU	1044	2A, FIELD INSTALL

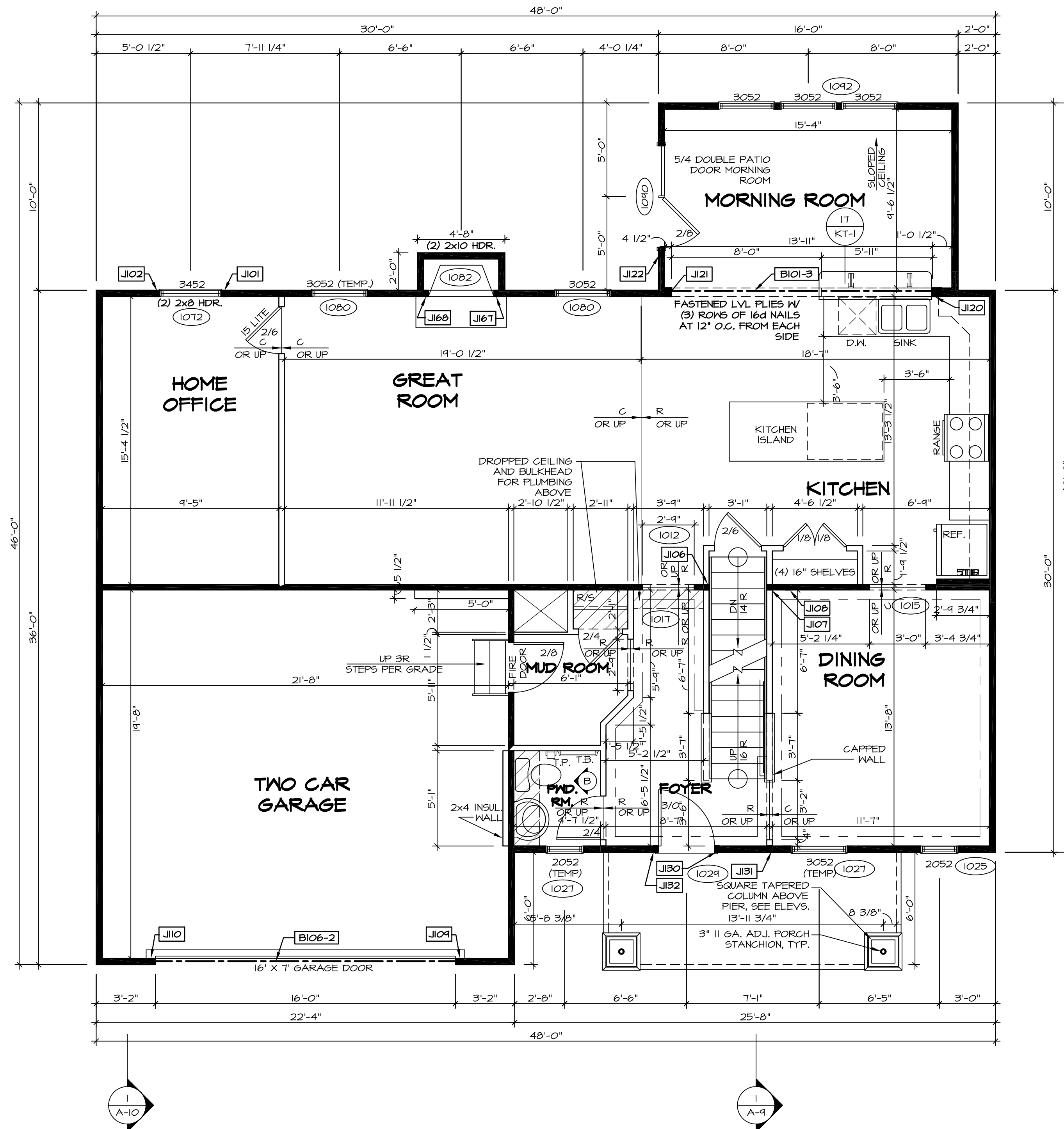
LEGEND	
	BEARING WALL
	NON BEARING WALL
	INDICATES BEARING FROM POINT-LOAD ABOVE
	JACKS
	BEAM/HEADER
	PAD FOOTING
	STEEL COLUMN
	PORTAL FRAME
	JOIST/TRUSS
	LVL
	ENGINEERING PAGE NUMBER

SEE FC DETAILS FOR FRAMING CONNECTORS

- FLOOR PLAN NOTES**
- ALL HEADERS ARE (2) 2x6 W/ 2x4 WALLS OR (3) 2x6 W/ 2x6 WALLS, UNLESS OTHERWISE NOTED.
 - ALL HEADERS TO HAVE (1) 2x4 OR 2x6 JACK EACH END, UNLESS OTHERWISE NOTED.
 - ALL EXTERIOR WALLS TO BE 4" AND ALL INTERIOR WALLS TO BE 3 1/2", UNLESS OTHERWISE NOTED.
 - HATCHED AREAS INDICATE DROPPED CEILINGS. ALL DROPPED CEILINGS ARE 12" UNLESS OTHERWISE NOTED.
 - SEE "BRACED WALL PANEL DETAIL SHEET" FOR SPECIAL WALL FRAMING LOCATIONS AND HEADER SIZES, IF APPLICABLE.
 - SEE STANDARD DETAIL CATEGORY "11" SHEET(S) FOR INTERIOR TRIM DETAILS.
 - SEE ARCHITECTURAL DETAIL SHEET "AD" FOR HOUSE SPECIFIC INTERIOR TRIM OPTION TABLE.
 - ALL WINDOWS HAVE 7'-0 1/2" HEADER HEIGHT UNLESS OTHERWISE NOTED.
 - ALL CASED OPENINGS AT 7'-11", UNLESS OTHERWISE NOTED.

- GYPSONUM NOTES**
- AT GARAGE:**
 GYPSONUM BOARD AT COMMON WALLS, CEILINGS, BEAM WRAPS AND SUPPORTS PER STANDARD DETAIL FA-10b) FIRE ASSEMBLIES OR AS REQUIRED BY LOCAL CODE.
- AT STAIRS:**
 1/2" GYPSONUM BOARD AT UNDERSIDE OF STAIRS AND WALLS IN CLOSET

STEEL COLUMN SCHEDULE					
IDENTIFIER	STYLE	HEIGHT	OPTIONS	ENG. NUM.	REMARKS



FIRST FLOOR PLAN
 SCALE: 1/4" = 1'-0"

SHEET NO. A-7	MODEL PALERMO	DRAWING TITLE FIRST FLOOR PLAN	OPTION DESCRIPTION OPTION	DATE: 07/25/17	DRAWN BY: 03	VERSION: 03	SET NO.: PALOO	REVISIONS	REMARKS
								NO.	DATE
<p>NVR, Inc. Architectural Services 5285 Washington Blvd Frederick, MD 21703</p>								<p>08/04/16 TH - DRAWING ALIGNMENT</p> <p>07/27/17 SLS - T-PLY CONVERSION PROJECT</p>	

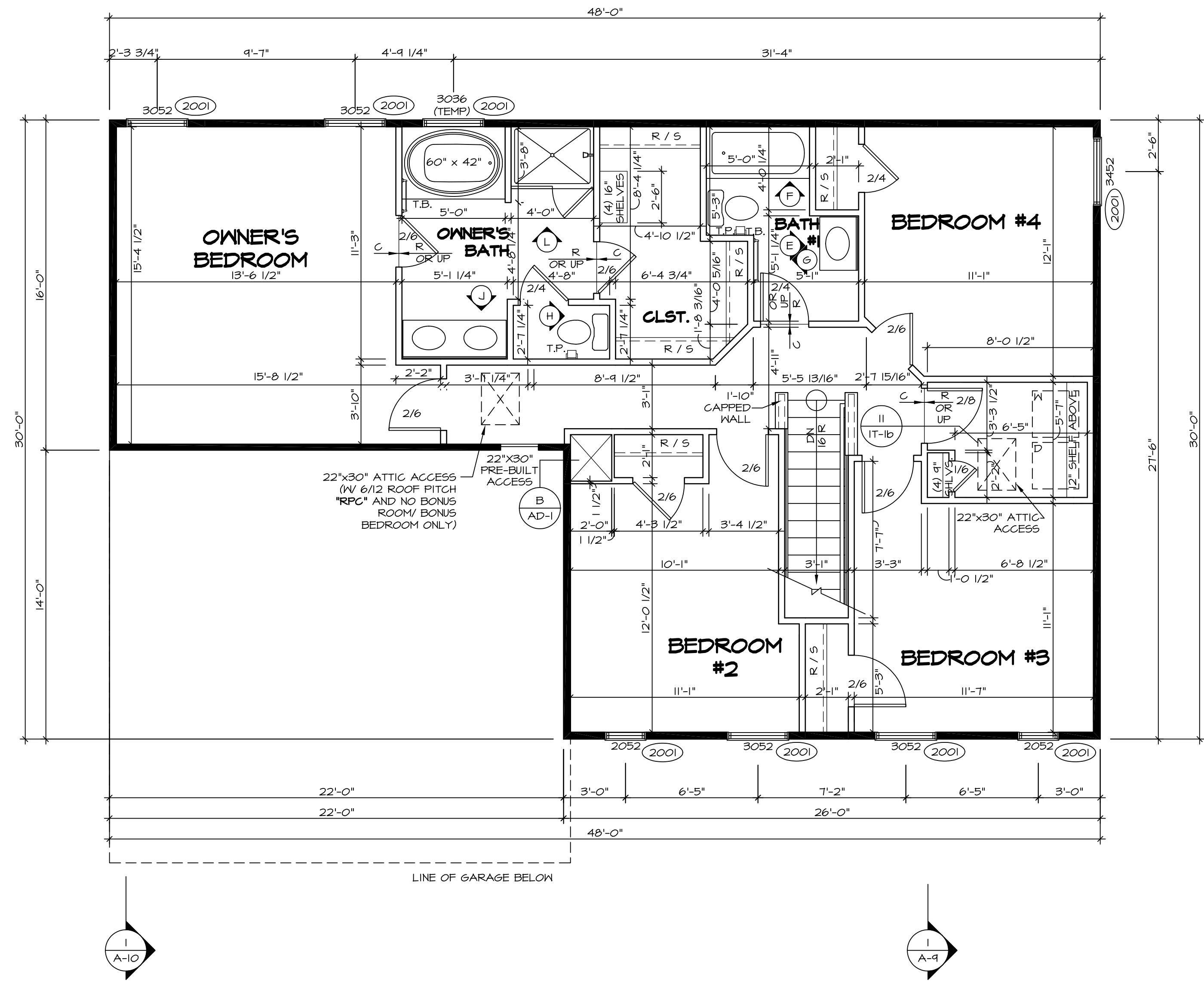
Small text at the bottom right: NVR, Inc., owner, expressly reserves its copyright in these plans. These plans are not to be reproduced, changed, copied, or otherwise used without the written consent of NVR, Inc.

Small text at the bottom right: C:\NVR\Solves\PALORMO_PALOO_03\DCI-B1-0020\49287\Sheets\101_Specific\53_A-7_P1N1_LS.dwg 07/25/17 - 6:15 am

SECOND FLOOR JACK SCHEDULE				
IDENTIFIER	DESCRIPTION	OPTIONS	ENG. NUM.	REMARKS

LEGEND	
	BEARING WALL
	NON BEARING WALL
	INDICATES BEARING FROM POINT-LOAD ABOVE
	JACKS
	BEAM/HEADER
	PAD FOOTING
	STEEL COLUMN
	PORTAL FRAME
	JOIST/TRUSS
	LVL
	ENGINEERING PAGE NUMBER

- FLOOR PLAN NOTES**
- ALL HEADERS ARE (2) 2x6 w/ 2x4 WALLS OR (3) 2x6 w/ 2x6 WALLS, UNLESS OTHERWISE NOTED.
 - ALL HEADERS TO HAVE (1) 2x4 OR 2x6 JACK EACH END, UNLESS OTHERWISE NOTED.
 - ALL EXTERIOR WALLS TO BE 4" AND ALL INTERIOR WALLS TO BE 3 1/2", UNLESS OTHERWISE NOTED.
 - HATCHED AREAS INDICATE DROPPED CEILINGS. ALL DROPPED CEILINGS ARE 12" UNLESS OTHERWISE NOTED.
 - SEE "BRACED WALL PANEL DETAIL SHEET" FOR SPECIAL WALL FRAMING LOCATIONS AND HEADER SIZES, IF APPLICABLE.
 - SEE STANDARD DETAIL CATEGORY "IT" SHEET(S) FOR INTERIOR TRIM DETAILS.
 - SEE ARCHITECTURAL DETAIL SHEET "AD" FOR HOUSE SPECIFIC INTERIOR TRIM OPTION TABLE.
 - ALL WINDOWS HAVE T-0 1/2" HEADER HEIGHT UNLESS OTHERWISE NOTED.
 - ALL CASED OPENINGS AT T-11", UNLESS OTHERWISE NOTED.



SECOND FLOOR PLAN
SCALE: 1/4" = 1'-0"

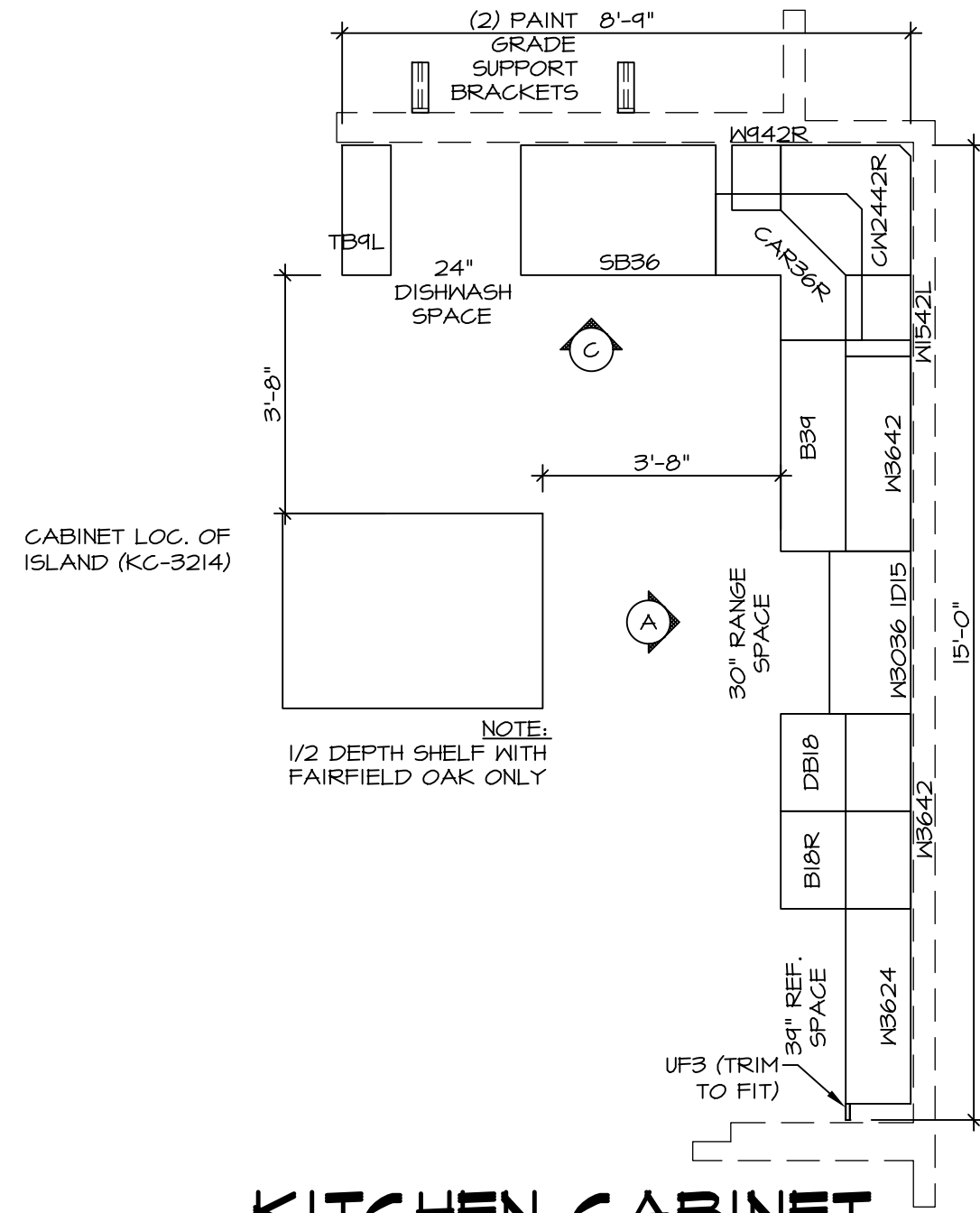
SHEET NO.	MODEL	SET NO.	DATE	REV. NO.	DATE	REMARKS
A-8	PALERMO	03	08/04/16	1	08/04/16	TH - DRAWING ALIGNMENT
60	SECOND FLOOR PLAN	03	07/25/17	2	07/25/17	SLS - T-PLY CONVERSION PROJECT

NVR, Inc., owner, expressly reserves its copyright in these plans. These plans are not to be reproduced, changed, copied, or otherwise used in any way without the written consent of NVR, Inc.

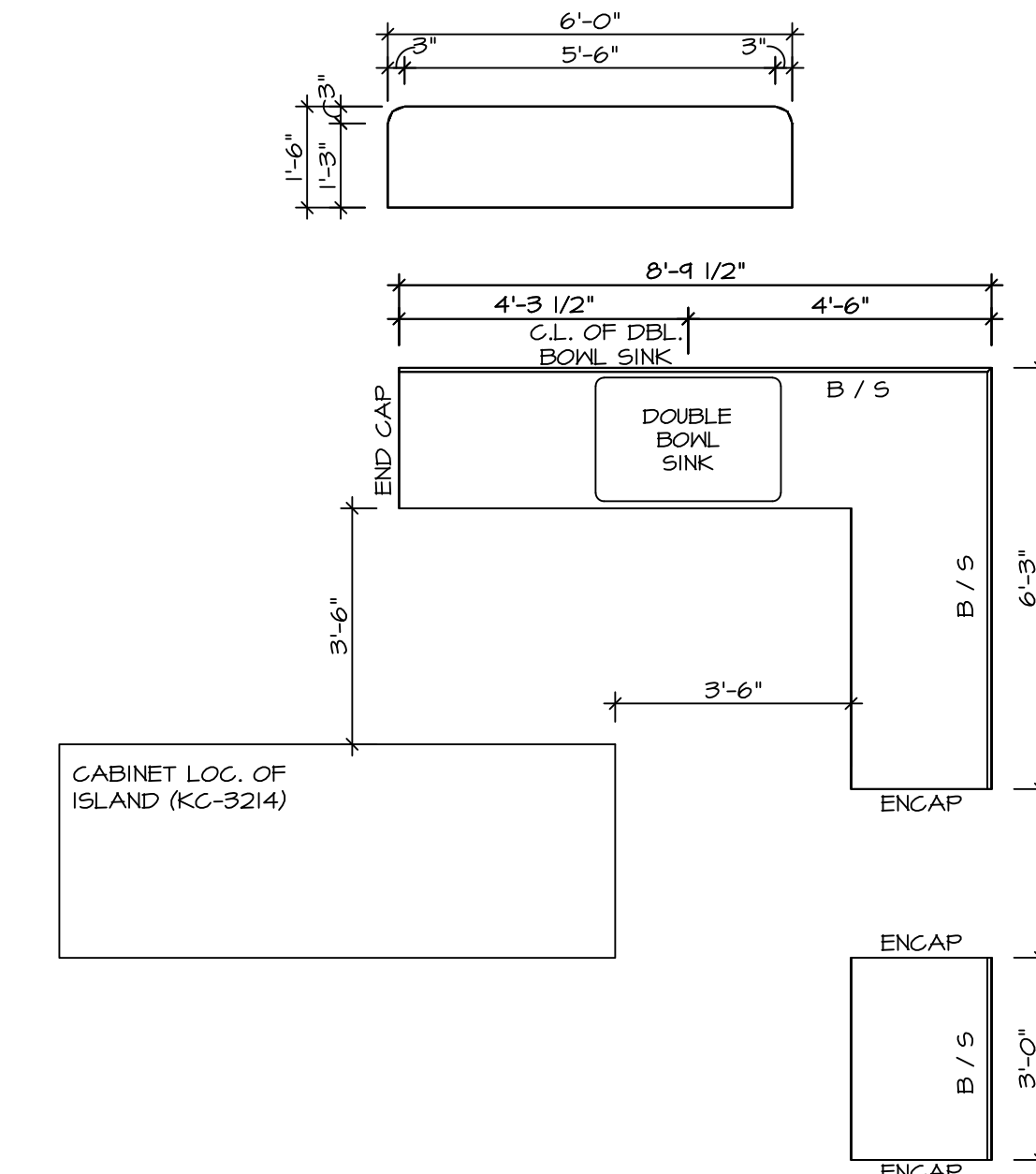
NVR
Architectural Services
5285 Westchase Circle
Frederick, MD 21703

SET NO. PALOO
VERSION 03
DRAWN BY
DATE:
OPTION

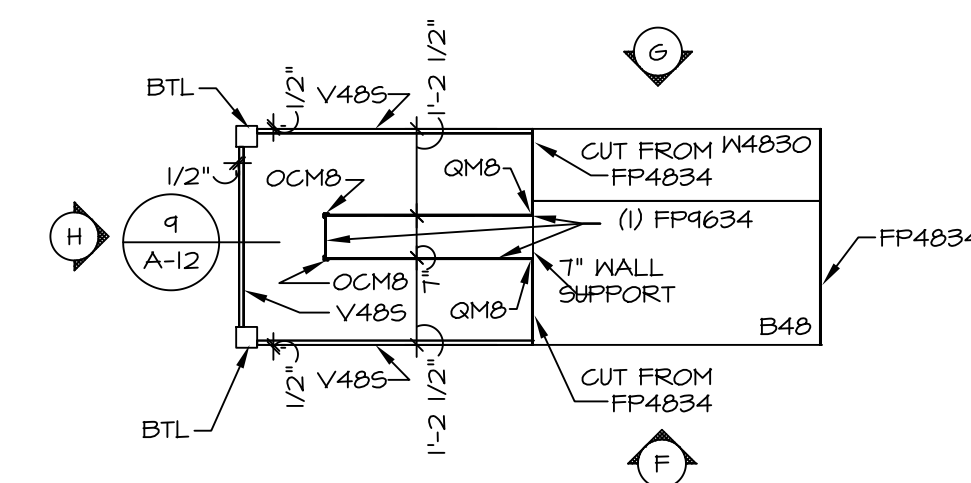
C:\NVR\Solves\PALERMO_PALOO_03\DC1-B1-0020\49287\Sheets\Lot_Spec\60 A-8 PLN2.LS.dwg 07/25/17 - 6:15 am



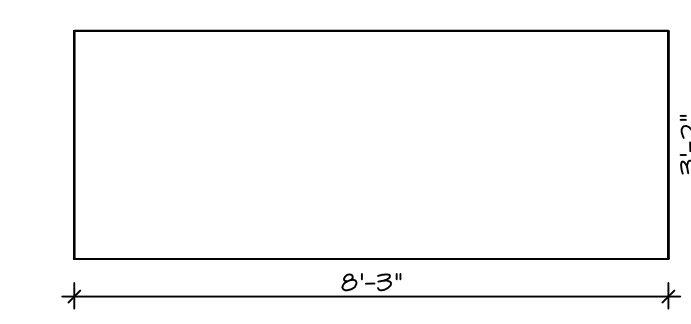
KITCHEN CABINET PLAN-KC-2862
 STANDARD KITCHEN MORNING ROOM SCALE: 3/8" = 1'-0" A-12



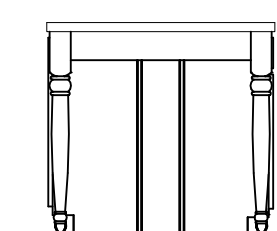
KITCHEN COUNTERTOP PLAN-KT-2862
 STANDARD KITCHEN MORNING ROOM SCALE: 3/8" = 1'-0" A-12



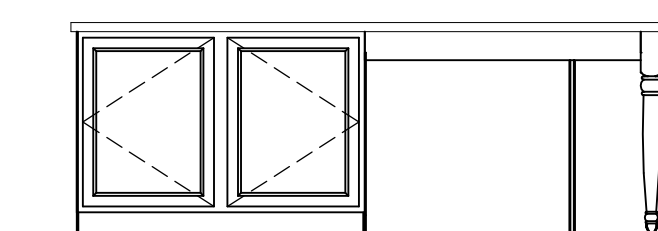
KITCHEN CABINET PLAN-KC-3214
 GOURMET ISLAND SCALE: 3/8" = 1'-0" A-12



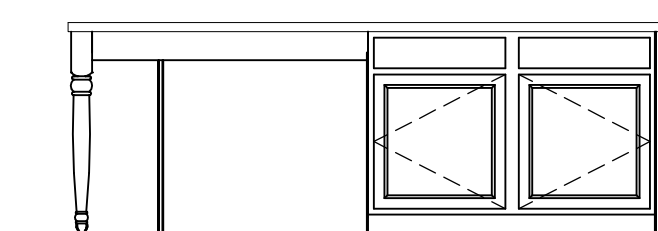
KITCHEN COUNTERTOP PLAN-KT-3214
 GOURMET ISLAND SCALE: 3/8" = 1'-0" A-12



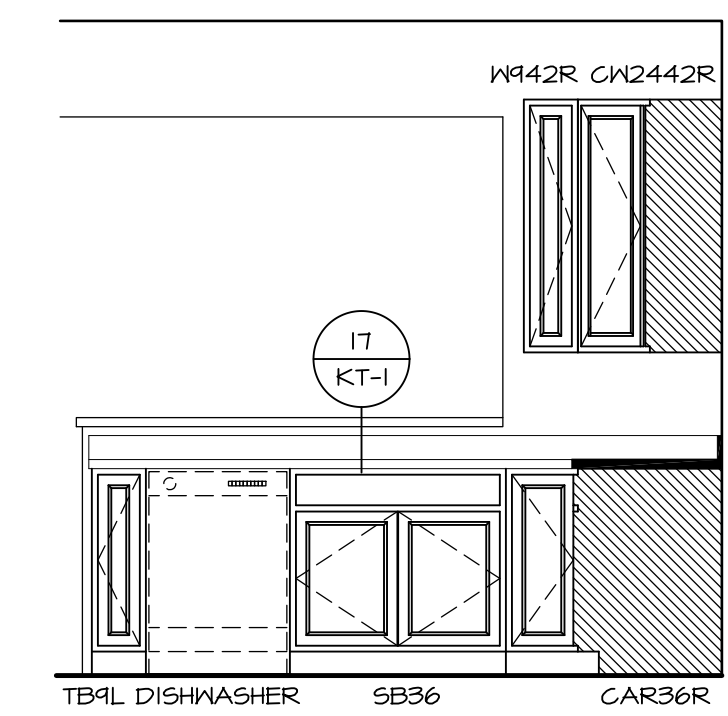
KITCHEN ELEVATION H
 SCALE: 3/8" = 1'-0"



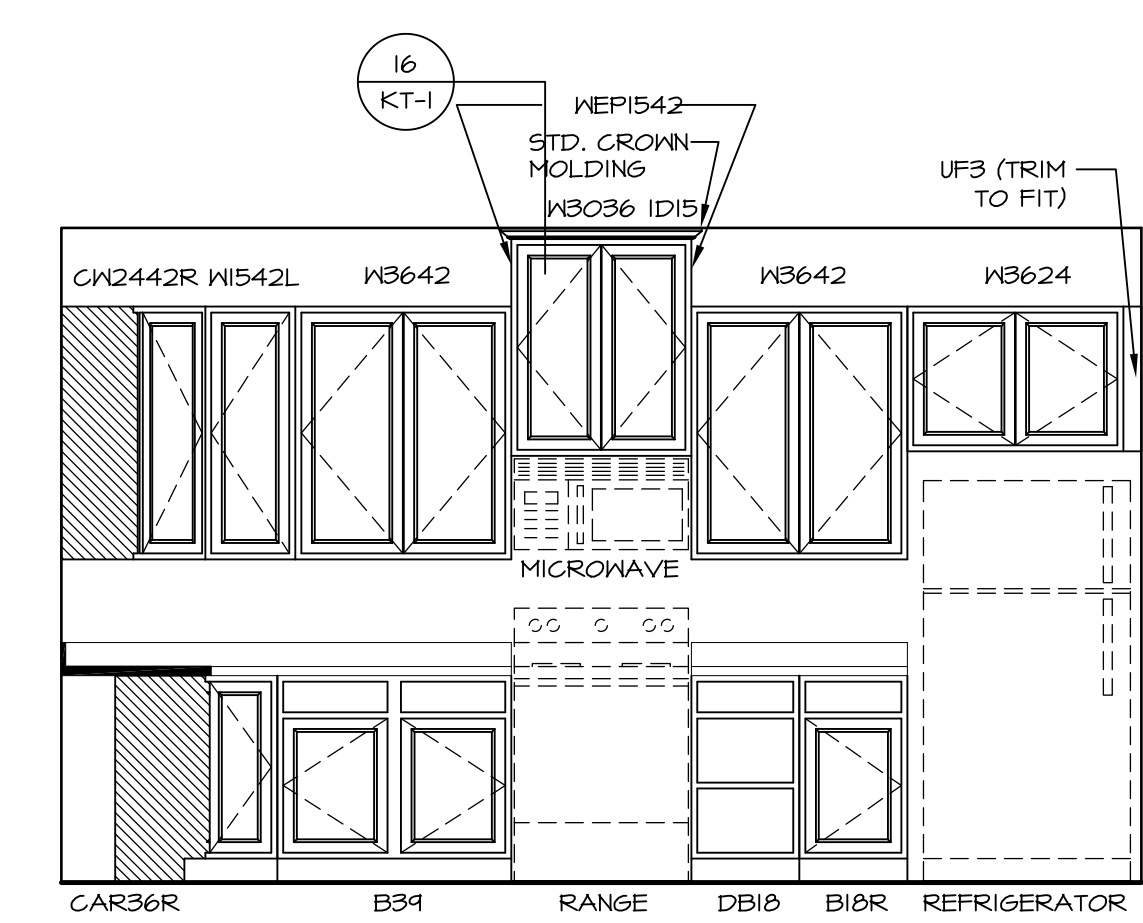
KITCHEN ELEVATION G
 SCALE: 3/8" = 1'-0"



KITCHEN ELEVATION F
 SCALE: 3/8" = 1'-0"

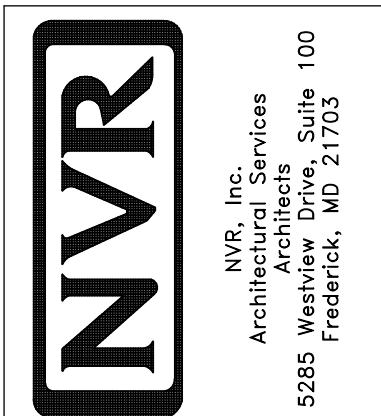


KITCHEN ELEVATION C
 SCALE: 3/8" = 1'-0"



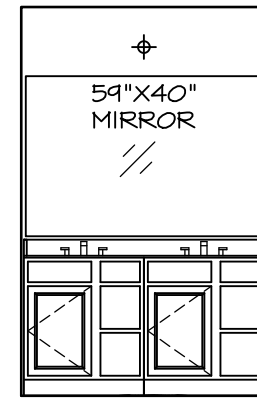
KITCHEN ELEVATION A
 SCALE: 3/8" = 1'-0"

SHEET NO.	MODEL	SET NO.	VERSION	DRAWN BY	DATE:	OPTION
A-12	PALERMO	03	03			
70	DRAWING TITLE					
	OPTION DESCRIPTION					



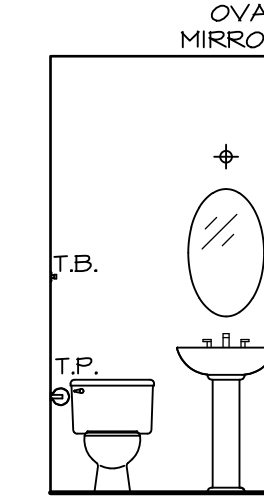
NVR, Inc., owner, expressly reserves its common law copyright in these plans. These plans are not to be reproduced, changed, adapted in any way, or otherwise used, without the prior written consent of NVR, Inc.

REV. NO.	DATE	REMARKS



(2) V5DB3034H

J OWNER'S BATH
SCALE: 1/4" = 1'-0"

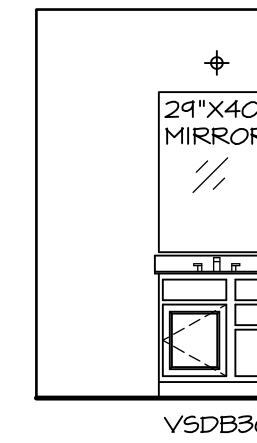


PEDESTAL SINK
(BY DIVISION)
WITH OVAL
MIRROR

B POWDER ROOM
SCALE: 1/4" = 1'-0"

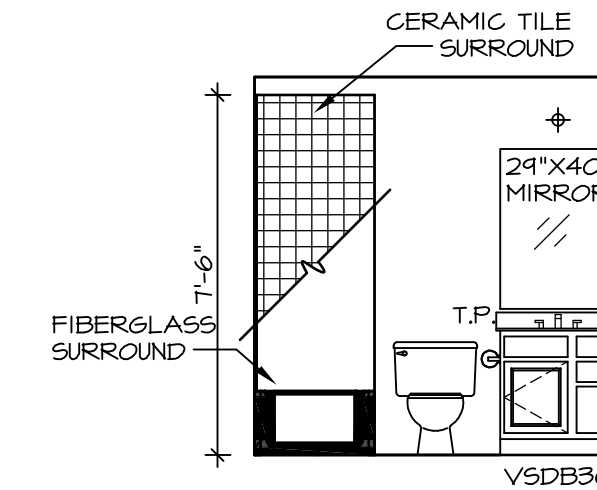


H OWNER'S BATH
SCALE: 1/4" = 1'-0"



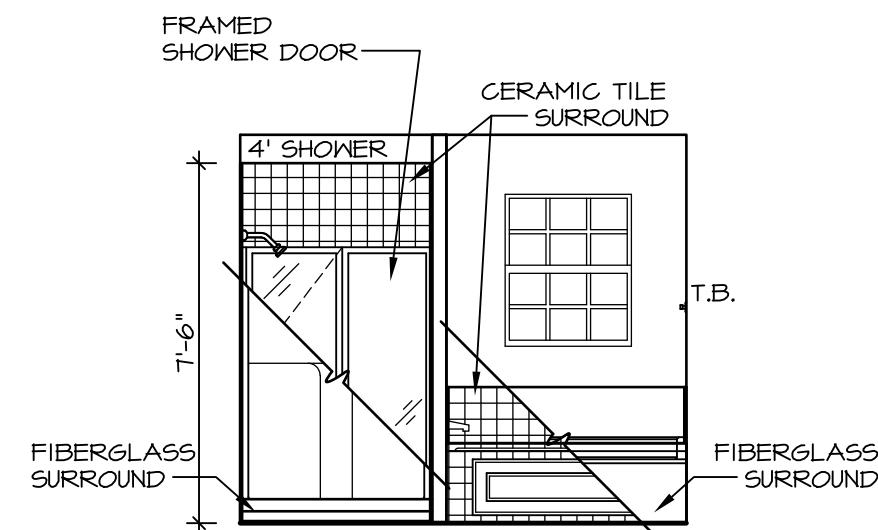
V5DB30

E BATH #1
SCALE: 1/4" = 1'-0"

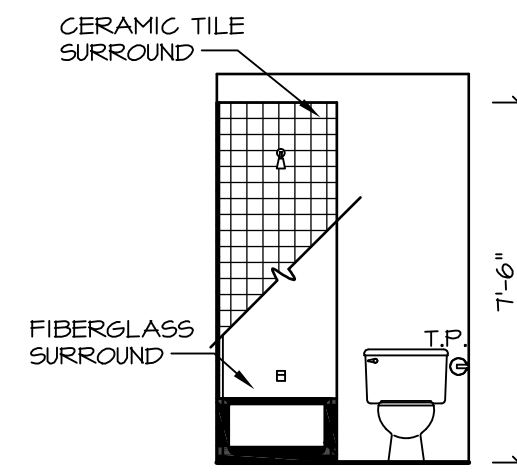


V5DB30

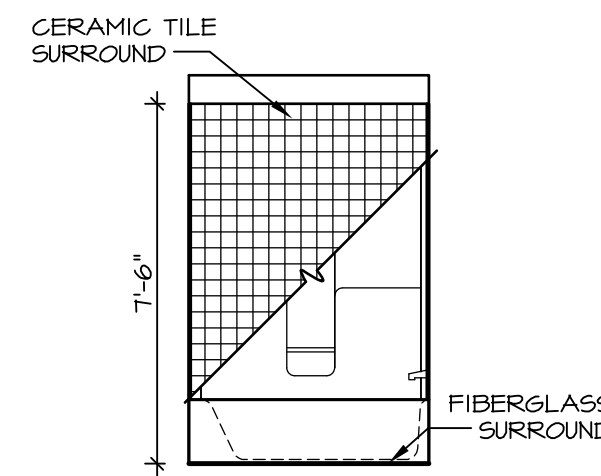
A BASEMENT BATH
SCALE: 1/4" = 1'-0"



L OWNER'S BATH
SCALE: 1/4" = 1'-0"



G BATH #1
SCALE: 1/4" = 1'-0"



F BATH #1
SCALE: 1/4" = 1'-0"

NOTES:

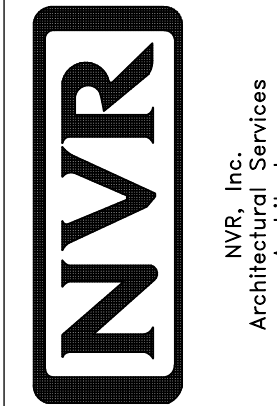
1. TEMPERED GLASS SHOWER ENCLOSURE WITH SWING DOOR OR OPTIONAL SLIDING DOOR BY DIVISION
2. TUB ACCESS PANELS PROVIDED AS NEEDED, ALL MATERIALS BY DIVISION
3. REFER TO SHEET IT-2 FOR TUB AND SHOWER DETAILS.
4. ALL V5DB24-42 DRAWERS TO BE SET ON RIGHT HAND.
5. BATH ELEVATIONS ARE SHOWN PER PLAN.

REMARKS

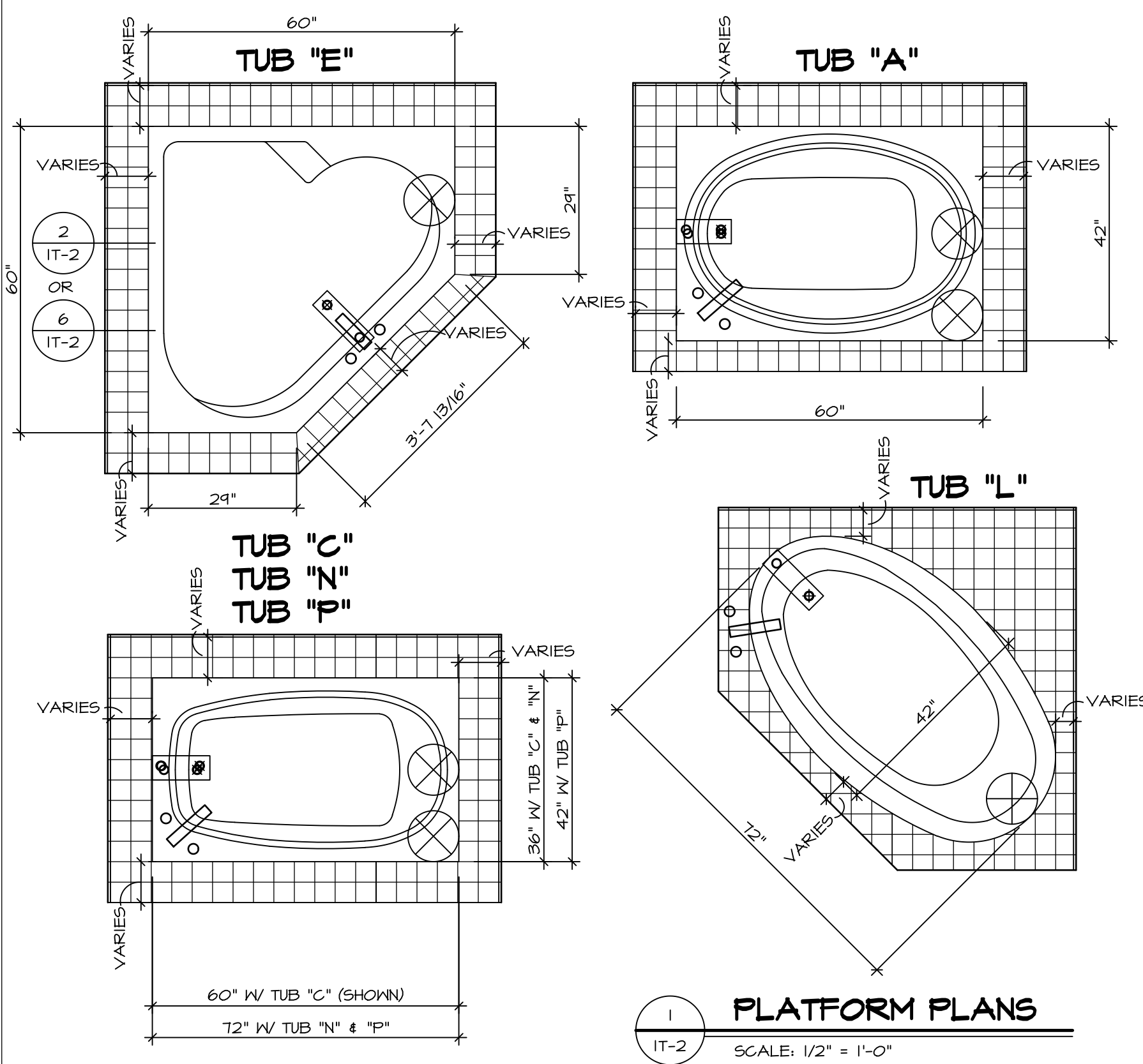
REV. NO. | DATE | DESCRIPTION

1 | 08/04/16 | TM - DRAWING ALIGNMENT

NVR, Inc., owner, expressly reserves its copyright in these plans. These plans are not to be reproduced, changed, adapted, or otherwise used in any way without the prior written consent of NVR, Inc.



MODEL	SET NO. PALOO
PALERMO	VERSION 03
DRAWING TITLE	DRAWN BY
BATH ELEVATIONS	DATE:
OPTION DESCRIPTION	OPTION
A-13	
72	

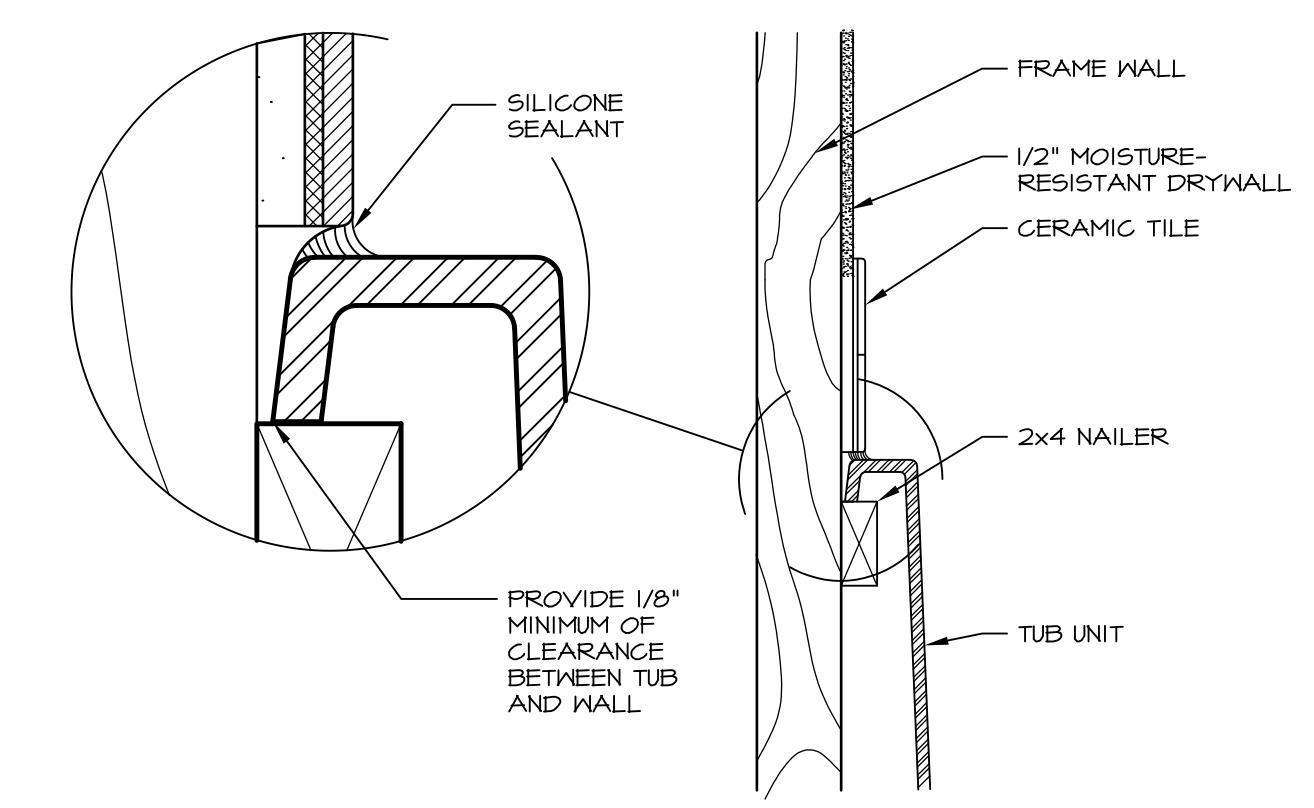


1 PLATFORM PLANS
SCALE: 1/2" = 1'-0"

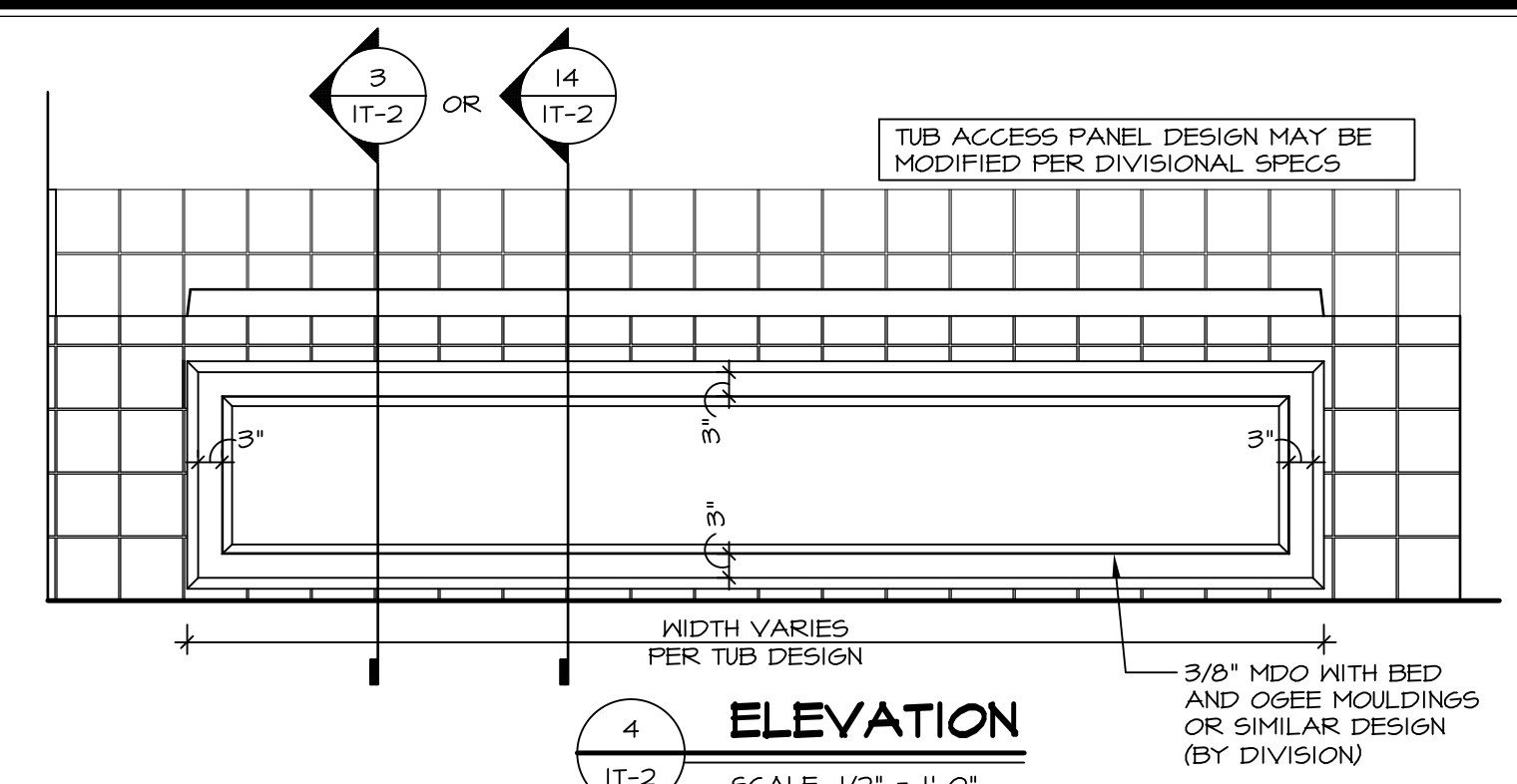
TUB	MANUF.	HEIGHT	WIDTH	LENGTH	TUB DECK PANEL HEIGHT
"A"	KOHLER/ STERLING	18 3/4"	42"	60"	17 1/8"
"C"	KOHLER/ STERLING	18 3/4"	36"	60"	17 1/8"
"E"	KOHLER/ STERLING	19 1/2"	60"	60"	17 7/8"
"L"	KOHLER/ STERLING	18 1/2"	42"	72"	16 7/8"
"N"	KOHLER/ STERLING	18 3/4"	36"	72"	17 1/8"
"P"	KOHLER/ STERLING	18 3/4"	42"	72"	17 1/8"



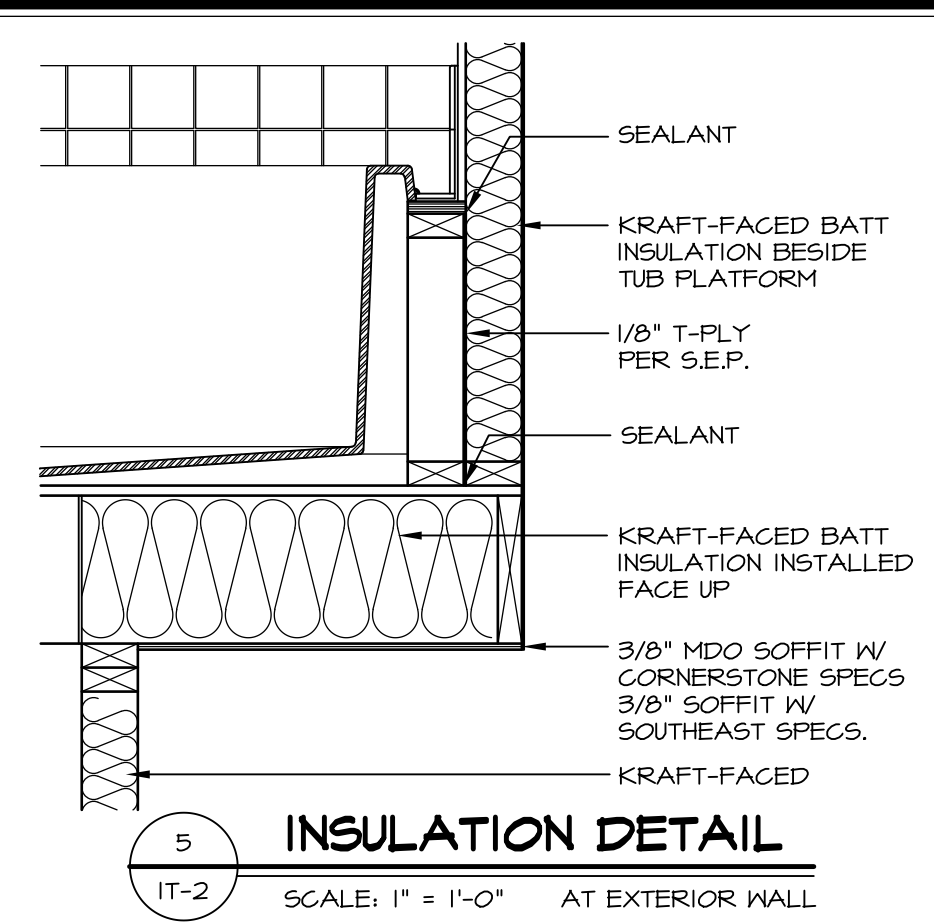
2 SECTION OF TUB ON PLATFORM CONDITION
SCALE: 1" = 1'-0"



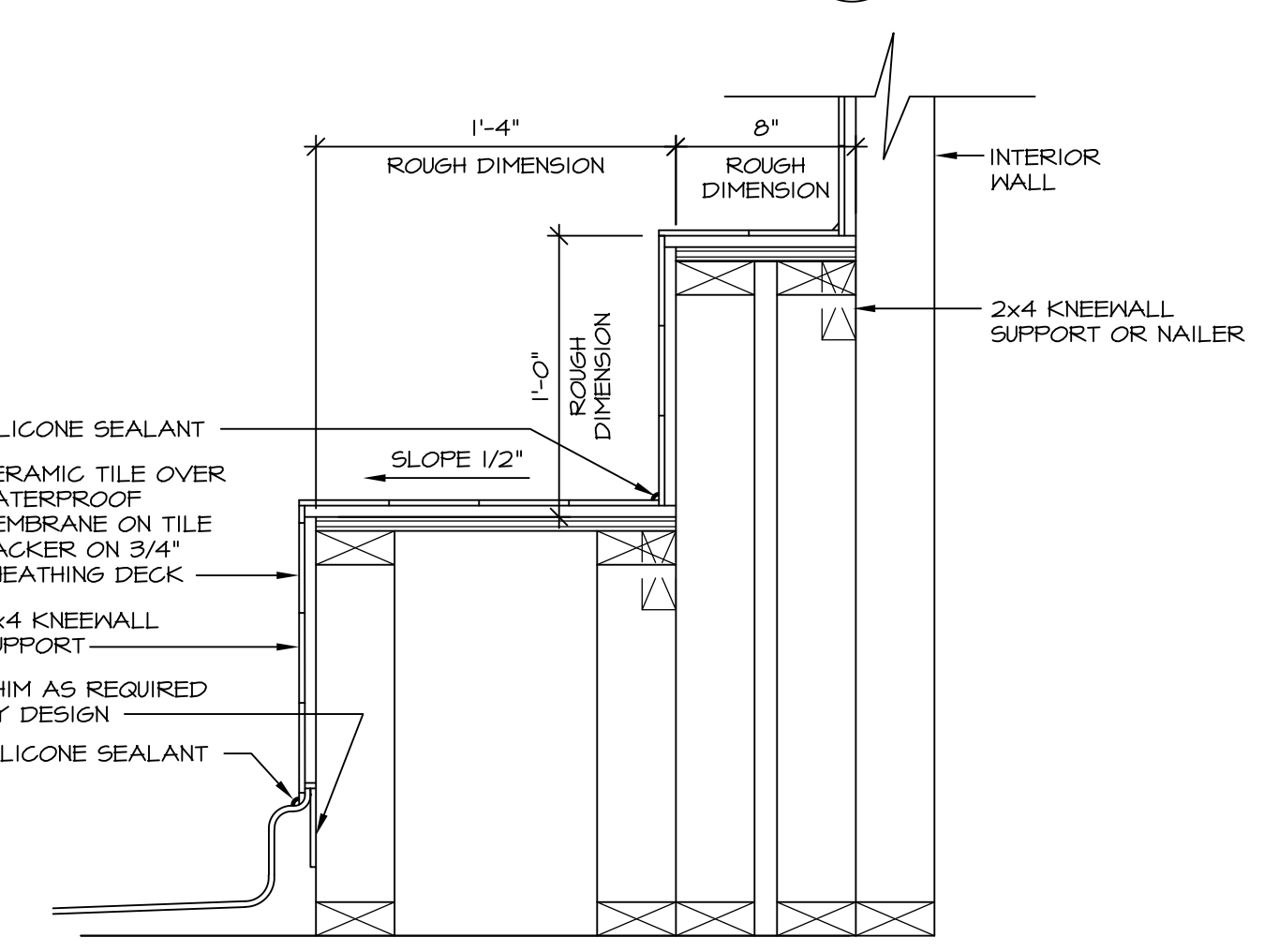
3 SECTION OF TUB TO WALL CONDITION
SCALE: 1 1/2" = 1'-0"



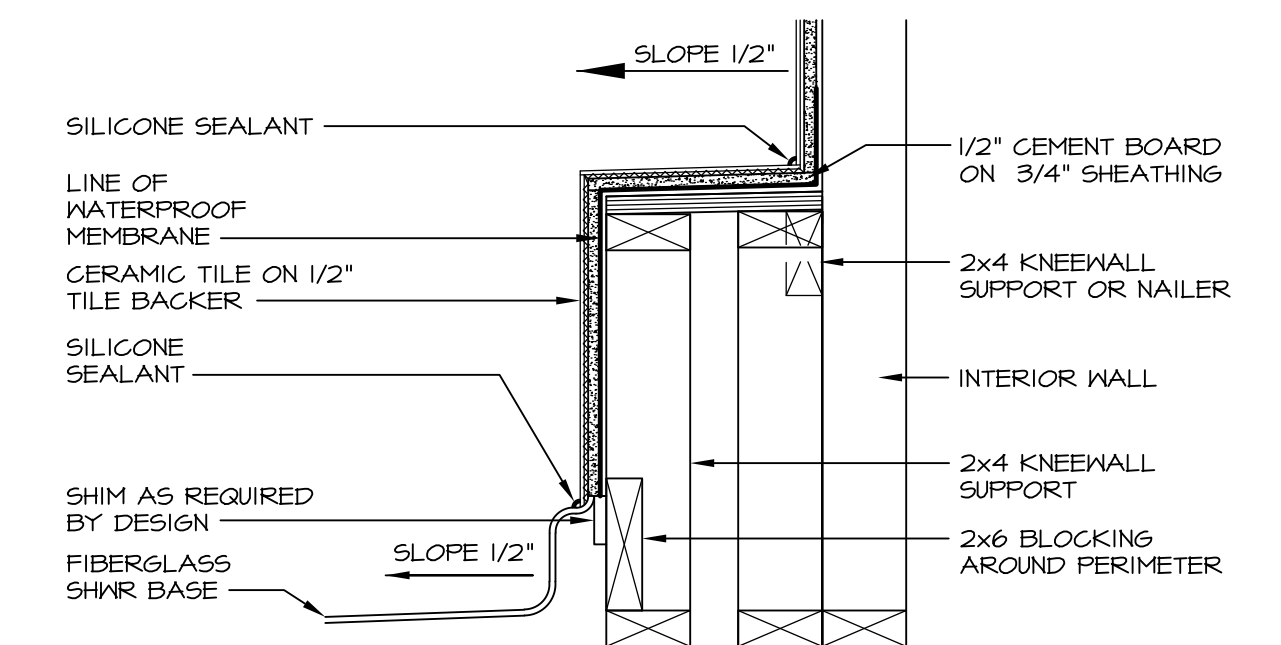
4 ELEVATION
SCALE: 1/2" = 1'-0"



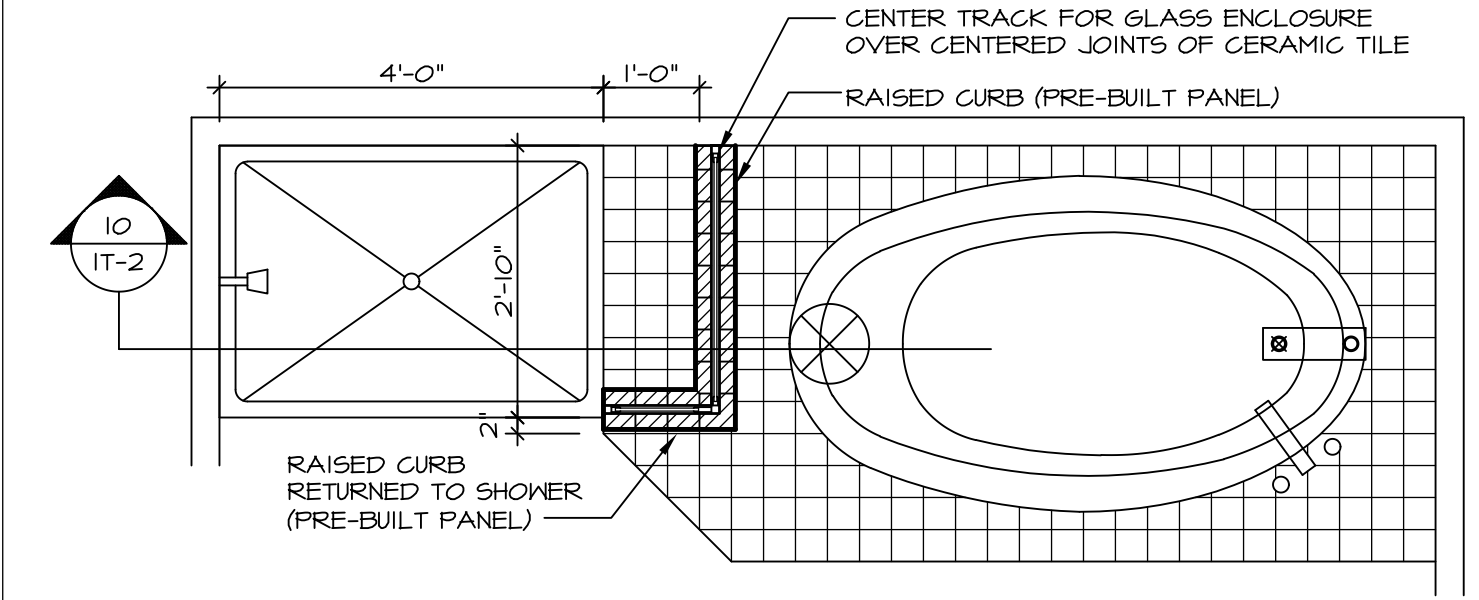
5 INSULATION DETAIL
SCALE: 1" = 1'-0" AT EXTERIOR WALL



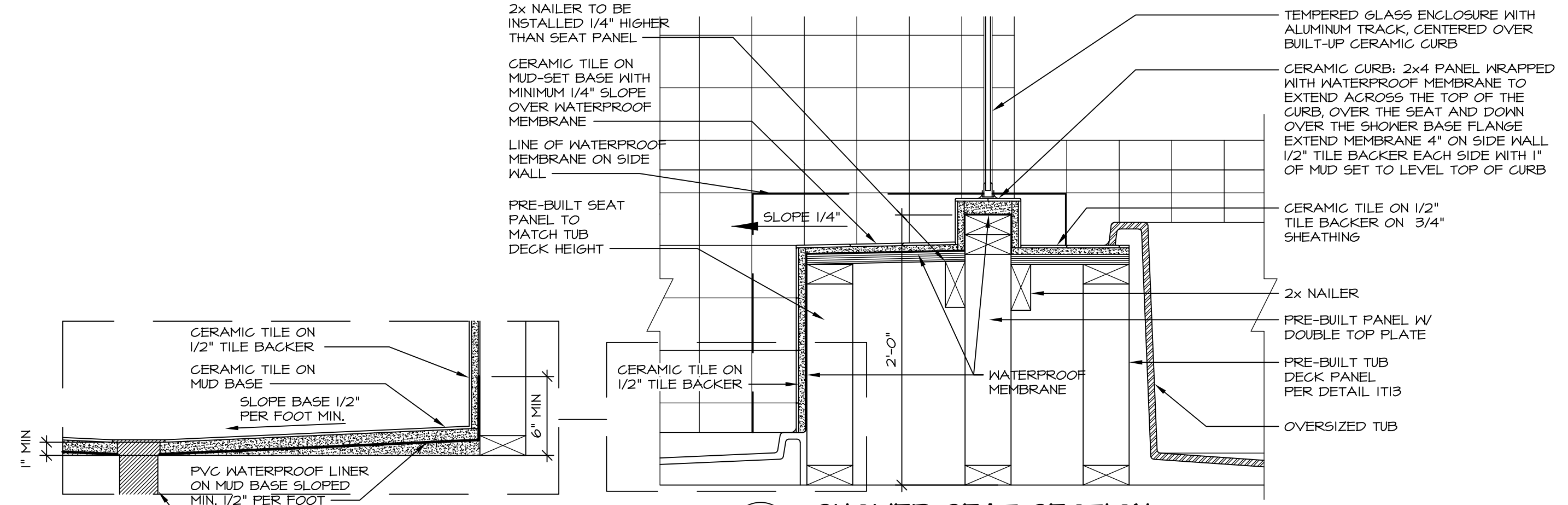
7 SECTION OF SHOWER SEAT AND SHELF
SCALE: 1 1/2" = 1'-0"



8 SECTION OF SHOWER SEAT
SCALE: 1-1/2" = 1'-0" FIBERGLASS SHOWER BASE



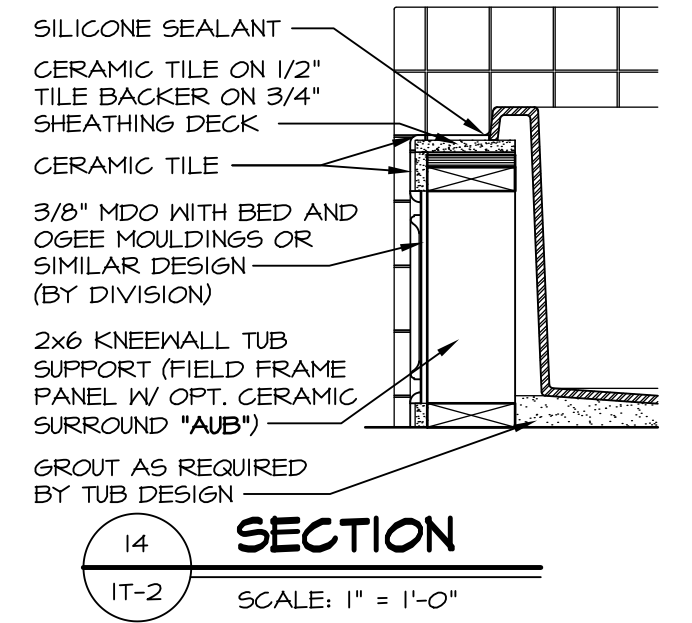
9 SHOWER SEAT PLAN / DETAIL
SCALE: 1/2" = 1'-0"



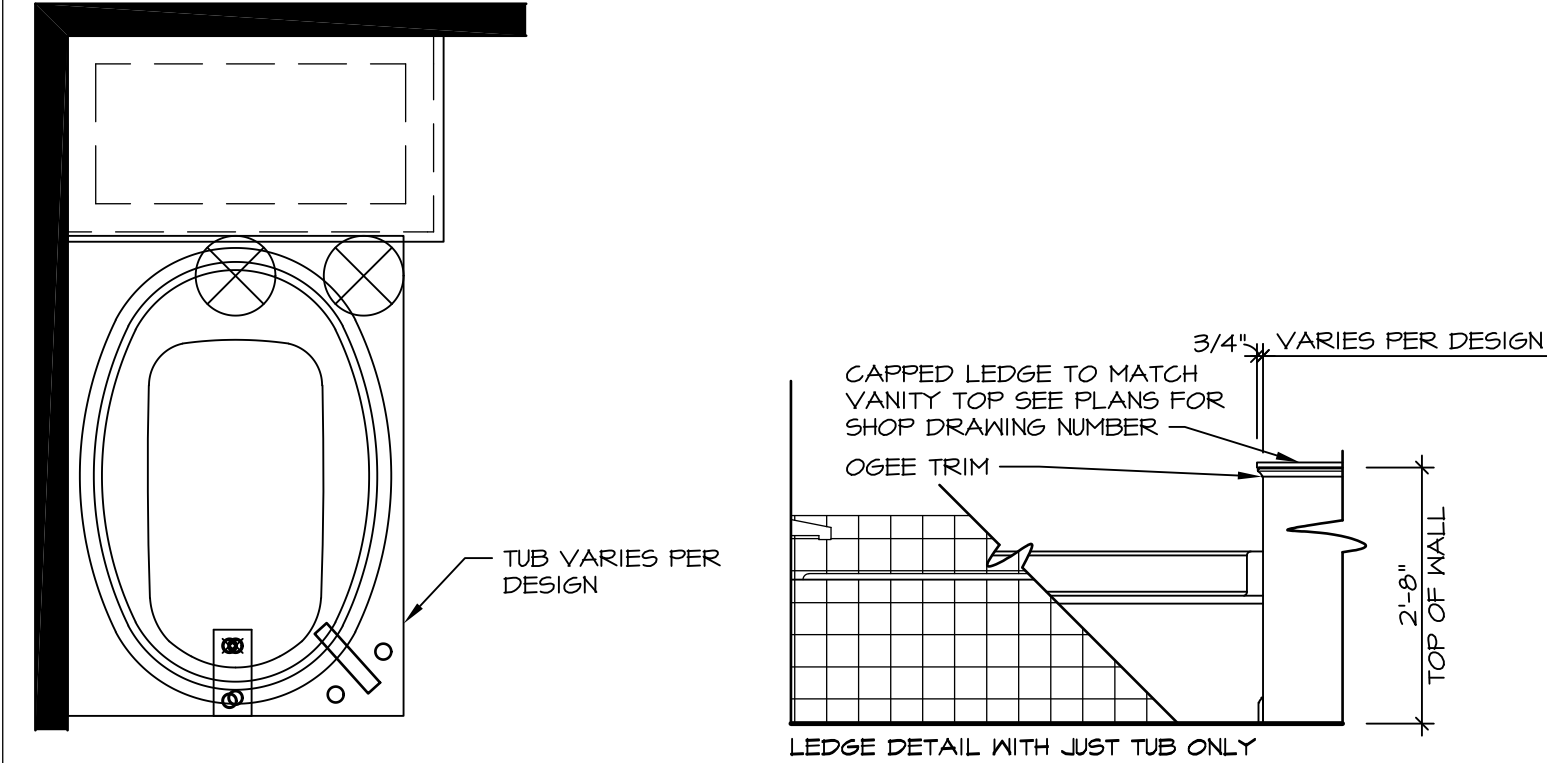
10 SHOWER SEAT SECTION
SCALE: 1-1/2" = 1'-0"



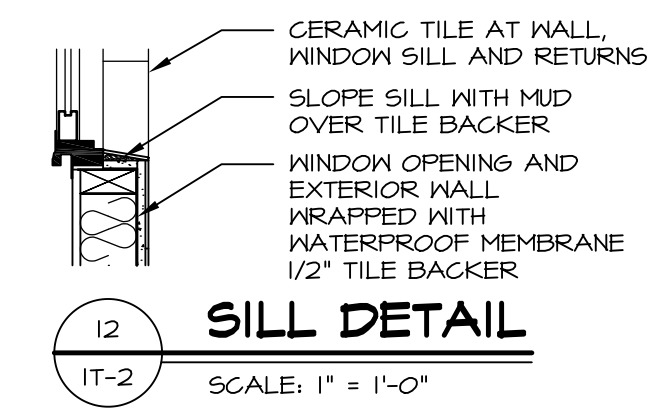
11 ALTERNATE SHOWER PAN DETAIL



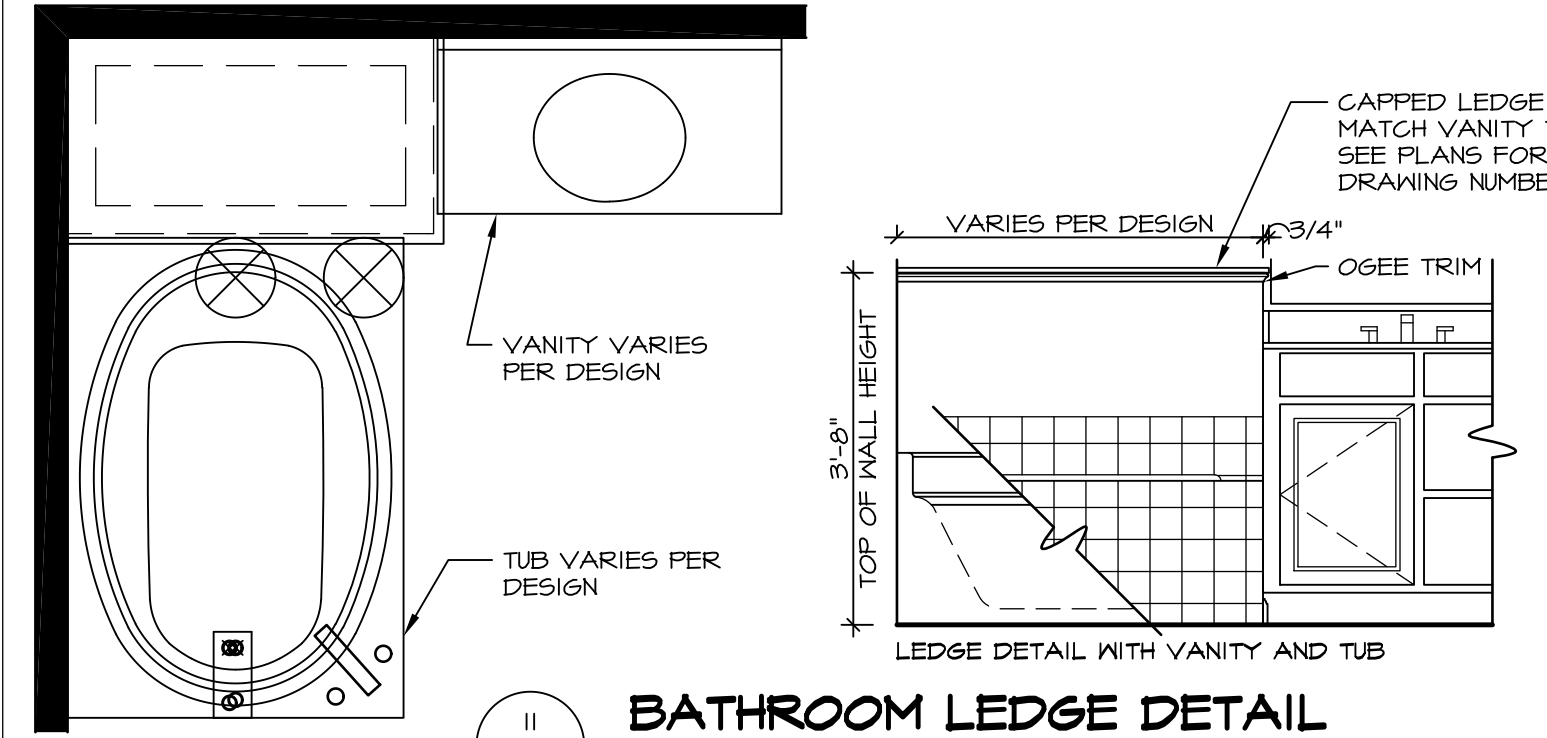
14 SECTION
SCALE: 1" = 1'-0"



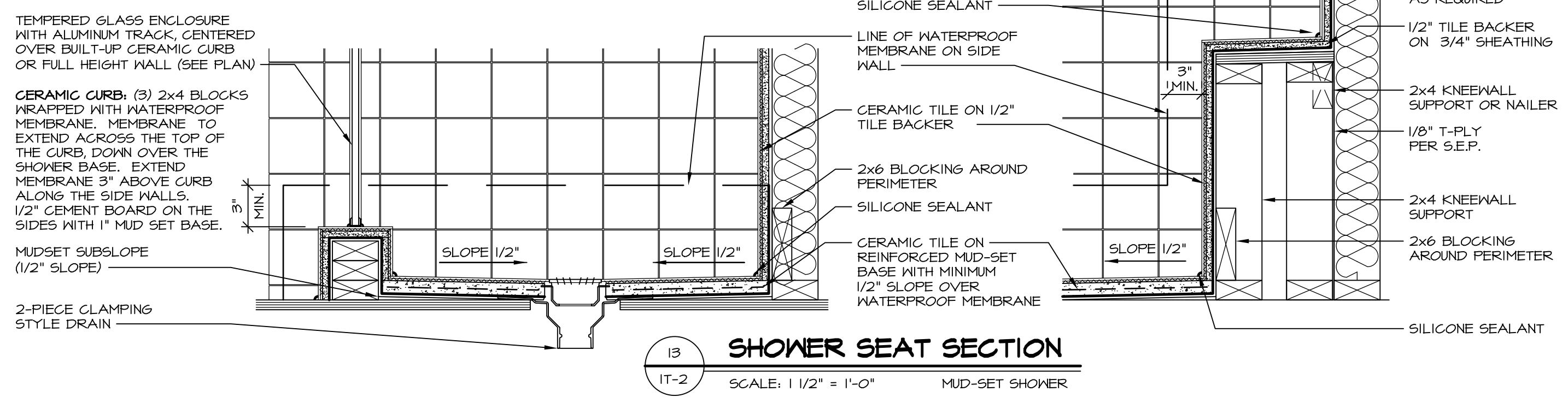
12 BATHROOM LEDGE DETAIL
SCALE: 1" = 1'-0"



13 SILL DETAIL
SCALE: 1" = 1'-0"



11 BATHROOM LEDGE DETAIL
SCALE: 1/2" = 1'-0"



13 SHOWER SEAT SECTION
SCALE: 1 1/2" = 1'-0" MUD-SET SHOWER

REV. NO. DATE
5/11/17
5/11/17

REMARKS
EPP - REVISED DETAIL 1 AND 11 TO REMOVE TUB ACCESS PANEL REF. (CBS #15 8414)

NVR
NVR, Inc.
Architectural Services
5285 Washburn Circle
Frederick, MD 21703

SET NO. NVR
VERSION
DRAWN BY
DATE:
OPTION

STANDARD DETAILS
DRAWING TITLE
INTERIOR TRIM DETAILS
BATH DETAILS
OPTION DESCRIPTION

SHEET NO. **IT-2**