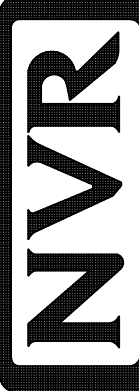
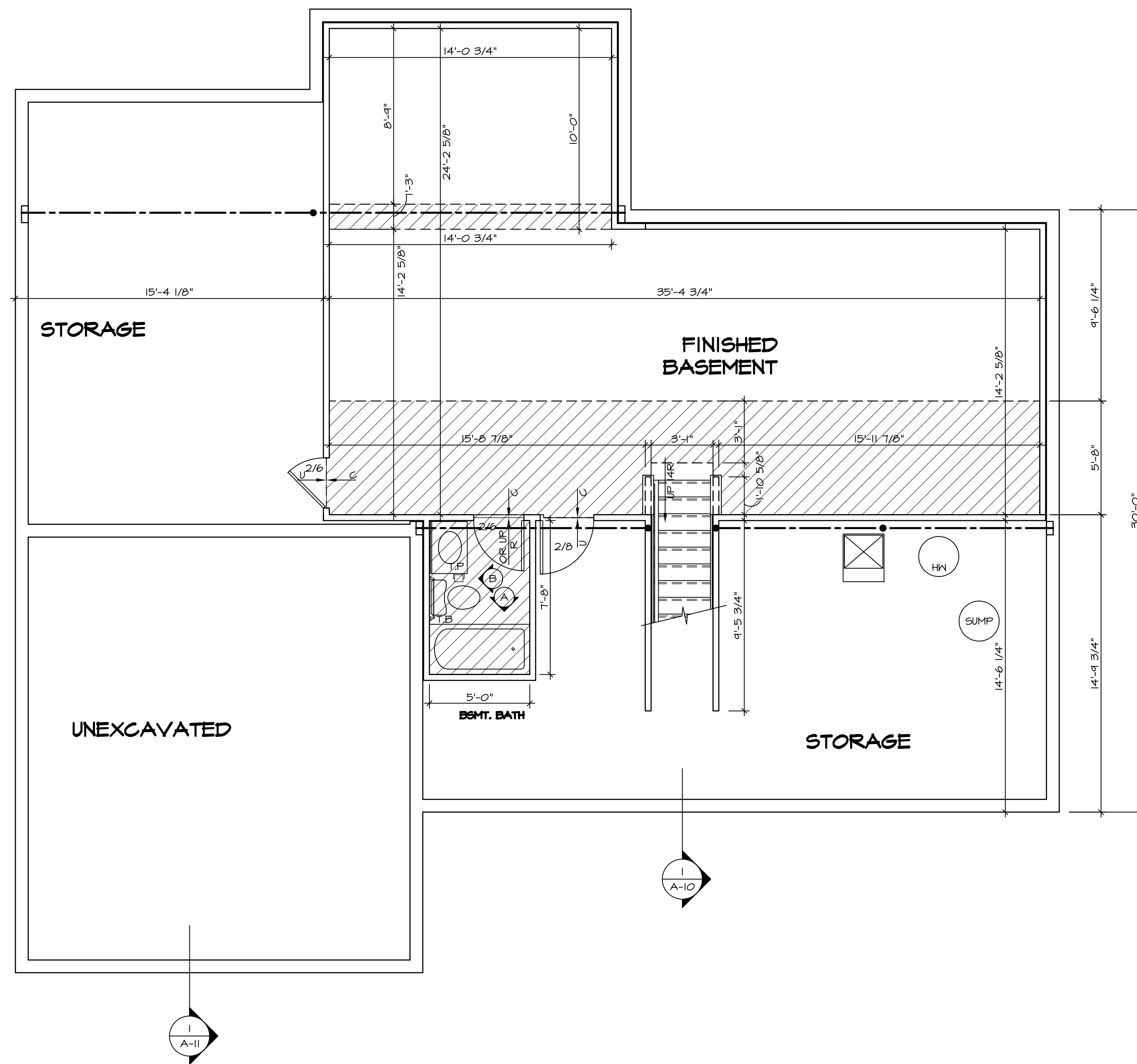


PLUMBING PLAN

SCALE: 1/4" = 1'-0"

1
A-5

| | | | |
|--|---------------------------------------|--|-----------------------------|
| SHEET NO. A-5 | MODEL RAVENNA | SET NO. RYNOO VERSION 03 | DRAWN BY DATE: OPTION |
| 41 | DRAWING TITLE PLUMBING PLAN |  NVR, Inc. Architectural Services Architects 21 B... Frederick, MD 21702 | |
| <p>NVR, Inc., owner, expressly reserves its copyright in these plans. These plans are not to be reproduced, changed, copied, or otherwise used in any way without the prior written consent of NVR, Inc.</p> | | | |
| REV. NO. | DATE | REMARKS | |



BASEMENT FLOOR PLAN
 SCALE: 1/4" = 1'-0"

| LEGEND | |
|--------|---|
| | BEARING WALL |
| | NON BEARING WALL |
| | INDICATES BEARING FROM POINT-LOAD ABOVE |
| | JACKS |
| | BEAM/HEADER |
| | PAD FOOTING |
| | STEEL COLUMN |
| | PORTAL FRAME |
| | JOIST/TRUSS |
| | LVL |
| | ENGINEERING PAGE NUMBER |

SEE FC DETAILS FOR FRAMING CONNECTORS

- FLOOR PLAN NOTES**
- ALL HEADERS ARE (2) 2x6 w/ 2x4 WALLS OR (3) 2x6 w/ 2x6 WALLS, UNLESS OTHERWISE NOTED.
 - ALL HEADERS TO HAVE (1) 2x4 OR 2x6 JACK EACH END, UNLESS OTHERWISE NOTED.
 - ALL EXTERIOR WALLS TO BE 4" AND ALL INTERIOR WALLS TO BE 3 1/2" UNLESS OTHERWISE NOTED.
 - HATCHED AREAS INDICATE DROPPED CEILINGS. ALL DROPPED CEILINGS ARE 12" UNLESS OTHERWISE NOTED.
 - SEE "BRACED WALL PANEL DETAIL SHEET" FOR SPECIAL WALL FRAMING LOCATIONS AND HEADER SIZES, IF APPLICABLE.
 - SEE STANDARD DETAIL CATEGORY "IT" SHEET(S) FOR INTERIOR TRIM DETAILS.
 - SEE ARCHITECTURAL DETAIL SHEET "AD" FOR HOUSE SPECIFIC INTERIOR TRIM OPTION TABLE.
 - ALL WINDOWS HAVE 7'-0 1/2" HEADER HEIGHT UNLESS OTHERWISE NOTED.

- GYPSUM NOTES**
- AT GARAGE:
 GYPSUM BOARD AT COMMON WALLS, CEILINGS, BEAM WRAPS AND SUPPORTS PER STANDARD DETAIL FA-1(b) FIRE ASSEMBLIES OR AS REQUIRED BY LOCAL CODE.
- AT STAIRS:
 1/2" GYPSUM BOARD AT UNDERSIDE OF STAIRS AND WALLS IN CLOSET

| SHEET NO. | MODEL | SET NO. | VERSION | DATE | OPTION | REMARKS |
|-----------|---------------------|---------|---------|----------|------------------------|---------|
| A-7 | RAVENNA | 03 | 03 | 08/02/16 | TH - DRAWING ALIGNMENT | |
| 4-4 | BASEMENT FLOOR PLAN | | | | | |

NVR, Inc. owner, expressly reserves its copyright in these plans. These plans are not to be reproduced, changed, copied in any way, or used for any other purpose without the written consent of NVR, Inc.

NVR
 NVR, Inc.
 Architectural Services
 Architects
 21 Park Plaza, Suite A
 Frederick, MD 21702

C:\NVR\Solves\RAVENNA_RVND00_03\DCY-B1-0032\360918\Sheets\Lot_Spec\44 A-7 BSMT.LS.dwg 03/01/17 - 10:21 pm

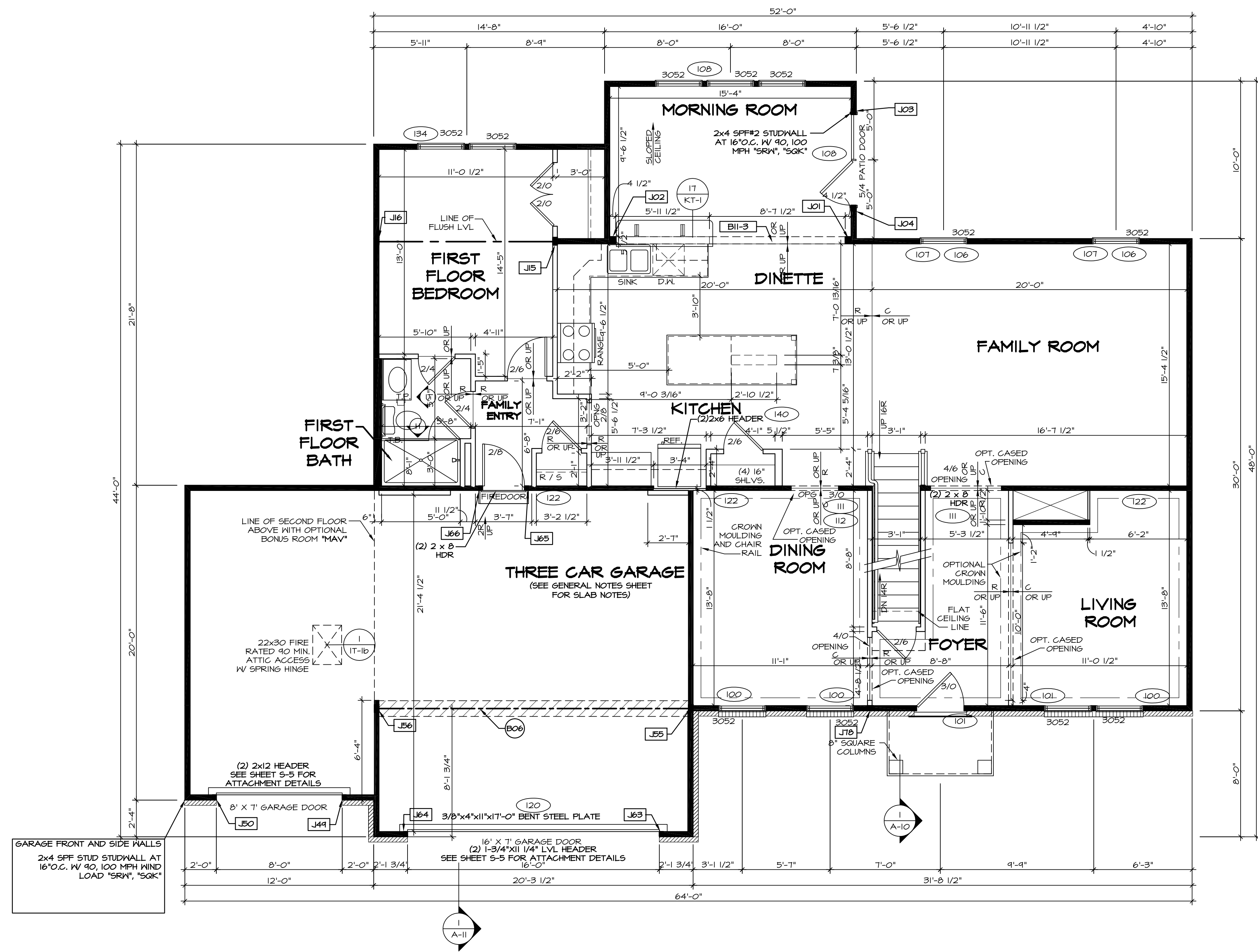
| FIRST FLOOR JACK SCHEDULE | | | | |
|---------------------------|-------------------------------|------------------------------|-----------|-------------------|
| IDENTIFIER | DESCRIPTION | OPTIONS | ENG. NUM. | REMARKS |
| J01 | JACK - (3) 2X6 SFF STUD GRADE | MAA | 112 | |
| J02 | JACK - (3) 2X6 SFF STUD GRADE | MAA | 112 | |
| J03 | JACK - (3) 2X4 SFF STUD GRADE | SRN, SQK, MAA | 116 | FULL HEIGHT STUDS |
| J04 | JACK - (3) 2X4 SFF STUD GRADE | SRN, SQK, MAA | 116 | FULL HEIGHT STUDS |
| J15 | JACK - (4) 2X4 SFF STUD GRADE | BAR | 133 | |
| J16 | JACK - (4) 2X4 SFF STUD GRADE | BAR | 133 | |
| J41 | JACK - (2) 2X4 SFF STUD GRADE | GCF | 155 | |
| J50 | JACK - (2) 2X4 SFF STUD GRADE | GCF | 155 | |
| J55 | JACK - (4) 2X4 SFF STUD GRADE | MAV, ELA, ELB, ELC, ELL, GCF | 114 | |
| J56 | JACK - (4) 2X4 SFF STUD GRADE | MAV, ELA, ELB, ELC, ELL, GCF | 114 | |
| J63 | JACK - (2) 2X4 SFF STUD GRADE | MAV, GCF | 102 | |
| J64 | JACK - (2) 2X4 SFF STUD GRADE | MAV, GCF | 102 | |
| J65 | JACK - (2) 2X4 SFF STUD GRADE | BAR | 112 | |
| J66 | JACK - (2) 2X4 SFF STUD GRADE | BAR | 112 | |
| J78 | JACK - (3) 2X4 SFF STUD GRADE | SQK OR SRN | 110 | |

| LVL PLY TO PLY FASTENING SCHEDULE: | |
|------------------------------------|---|
| 1.A | (2) PLY UP TO AND INCLUDING 11 7/8" TALL; FASTEN PLYS W/ (2) ROWS 16D NAILS AT 12" O.C. |
| 2.A | (2) PLY 14" TO AND INCLUDING 18" TALL (INCLUSIVE); FASTEN PLYS W/ (3) ROWS 16D NAILS AT 12" O.C. |
| 3.A | (2) PLY 20" TALL AND OVER; FASTEN PLYS W/ (4) ROWS 16D NAILS AT 12" O.C. |
| 3.A | (3) PLY UP TO AND INCLUDING 11 7/8" TALL; FASTEN PLYS W/ (2) ROWS 16D NAILS AT 12" O.C. FROM EACH SIDE |
| 5.A | (3) PLY 14" TO AND INCLUDING 18" TALL (INCLUSIVE); FASTEN PLYS W/ (3) ROWS 16D NAILS AT 12" O.C. FROM EACH SIDE |
| 6.A | (3) PLY 20" TALL AND OVER; FASTEN PLYS W/ (4) ROWS 16D NAILS AT 12" O.C. FROM EACH SIDE |

| FIELD INSTALLED FIRST FLOOR BEAM/HEADER SCHEDULE | | | | | |
|--|---------------------|------------|------------------------------|-----------|------------|
| IDENTIFIER | DESCRIPTION | LENGTH | OPTIONS | ENG. NUM. | REMARKS |
| B06 | BEAM STEEL - W12X19 | 20'-2 1/2" | MAV, ELA, ELB, ELC, ELL, GCF | 114 | |
| B11-3 | LVL - 16 | 15'-4" | MAA | 112 | 3 PLY, 5.A |

| LEGEND | |
|--------|---|
| | BEARING WALL |
| | NON BEARING WALL |
| | INDICATES BEARING FROM POINT-LOAD ABOVE JACKS |
| | BEAM/HEADER |
| | PAD FOOTING |
| | STEEL COLUMN |
| | PORTAL FRAME |
| | JOIST/TRUSS |
| | LVL |
| | ENGINEERING PAGE NUMBER |

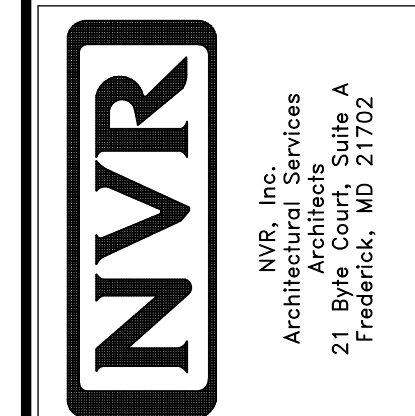
- FLOOR PLAN NOTES**
- ALL HEADERS ARE (2) 2x6 W/ 2x4 WALLS OR (3) 2x6 W/ 2x6 WALLS, UNLESS OTHERWISE NOTED.
 - ALL HEADERS TO HAVE (1) 2x4 OR 2x6 JACK EACH END, UNLESS OTHERWISE NOTED.
 - ALL EXTERIOR WALLS TO BE 4" AND ALL INTERIOR WALLS TO BE 3 1/2", UNLESS OTHERWISE NOTED.
 - HATCHED AREAS INDICATE DROPPED CEILINGS. ALL DROPPED CEILINGS ARE 12" UNLESS OTHERWISE NOTED.
 - SEE "BRACED WALL PANEL DETAIL SHEET" FOR SPECIAL WALL FRAMING LOCATIONS AND HEADER SIZES, IF APPLICABLE.
 - SEE STANDARD DETAIL, CATEGORY "11" SHEET(S) FOR INTERIOR TRIM DETAILS.
 - SEE ARCHITECTURAL DETAIL SHEET "AD" FOR HOUSE SPECIFIC INTERIOR TRIM OPTION TABLE.
 - ALL WINDOWS HAVE 11-0 1/2" HEADER HEIGHT UNLESS OTHERWISE NOTED.
- GYPSUM NOTES**
- AT GARAGE:
GYPSUM BOARD AT COMMON WALLS, CEILINGS, BEAM WRAPS AND SUPPORTS PER STANDARD DETAIL FA-1(b) FIRE ASSEMBLIES OR AS REQUIRED BY LOCAL CODE.
- AT STAIRS:
1/2" GYPSUM BOARD AT UNDERSIDE OF STAIRS AND WALLS IN CLOSET



FIRST FLOOR PLAN
SCALE: 1/4" = 1'-0"

| SHEET NO. | A-8 | | | | | | |
|--------------------|---|------------------------|------|-------------|---|----------|------------------------|
| | 45 | | | | | | |
| MODEL | RAVENNA | | | | | | |
| DRAWING TITLE | FIRST FLOOR PLAN | | | | | | |
| OPTION DESCRIPTION | | | | | | | |
| SET NO. | RVN00 | | | | | | |
| VERSION | 03 | | | | | | |
| DRAWN BY | | | | | | | |
| DATE: | | | | | | | |
| OPTION | | | | | | | |
| REVISIONS | <table border="1"> <thead> <tr> <th>REV. NO.</th> <th>DATE</th> <th>DESCRIPTION</th> </tr> </thead> <tbody> <tr> <td>1</td> <td>08/02/16</td> <td>TH - DRAWING ALIGNMENT</td> </tr> </tbody> </table> | REV. NO. | DATE | DESCRIPTION | 1 | 08/02/16 | TH - DRAWING ALIGNMENT |
| REV. NO. | DATE | DESCRIPTION | | | | | |
| 1 | 08/02/16 | TH - DRAWING ALIGNMENT | | | | | |
| REMARKS | | | | | | | |

NVR, Inc., owner, expressly reserves its common law copyright in these plans. These plans are not to be reproduced, changed, copied, or otherwise used in any way without the written consent of NVR, Inc.

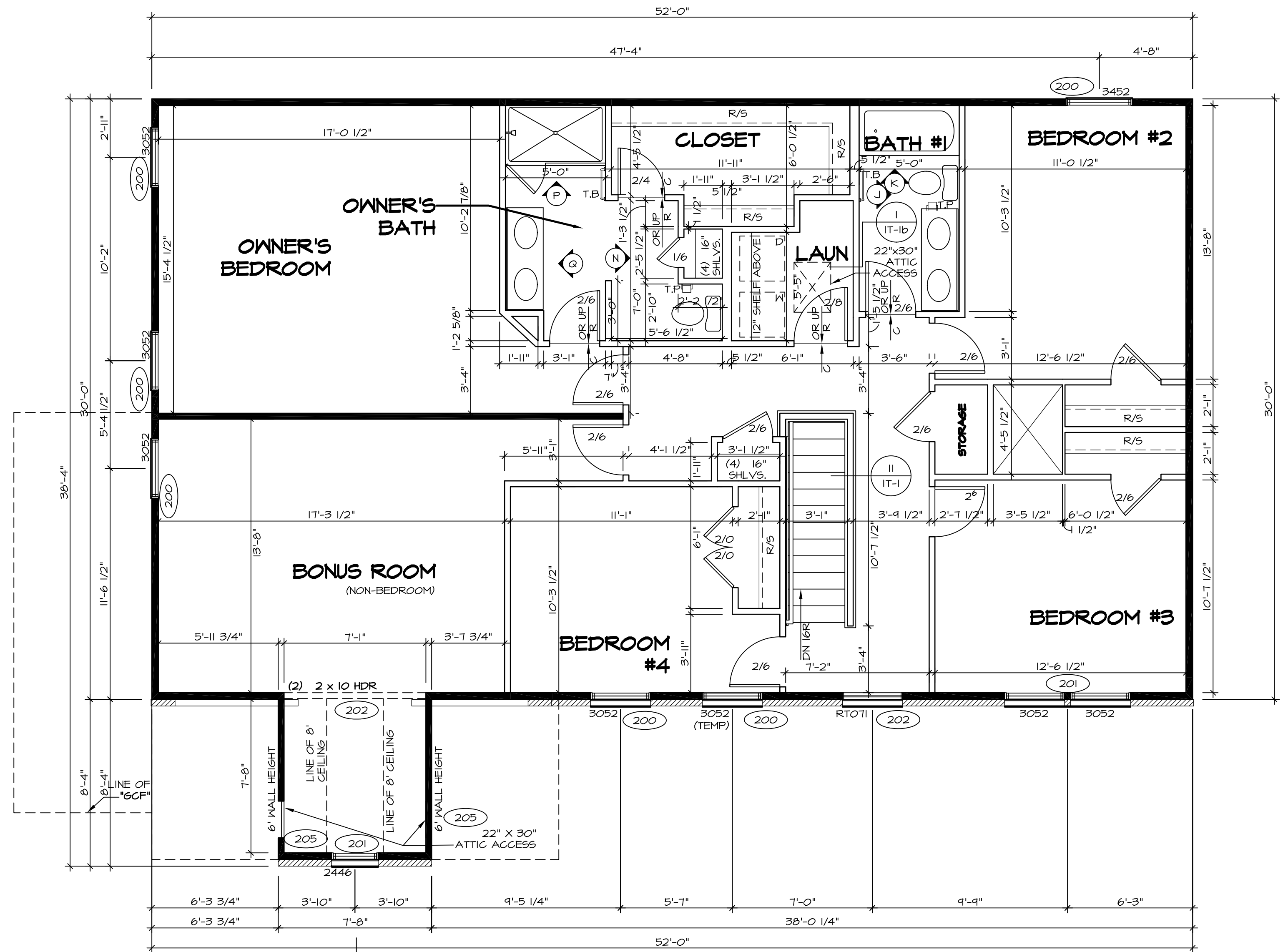


| SECOND FLOOR JACK SCHEDULE | | | | |
|----------------------------|-------------|---------|-----------|---------|
| IDENTIFIER | DESCRIPTION | OPTIONS | ENG. NUM. | REMARKS |
| | | | | |

| LEGEND | |
|--------|---|
| | BEARING WALL |
| | NON BEARING WALL |
| | INDICATES BEARING FROM POINT-LOAD ABOVE |
| | JACKS |
| | BEAM/HEADER |
| | PAD FOOTING |
| | STEEL COLUMN |
| | PORTAL FRAME |
| | JOIST/TRUSS |
| | LVL |
| | ENGINEERING PAGE NUMBER |

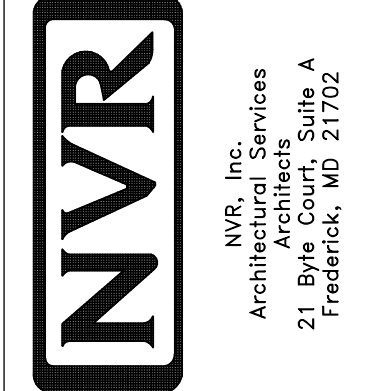
SEE FC DETAILS FOR FRAMING CONNECTORS

- FLOOR PLAN NOTES**
- ALL HEADERS ARE (2) 2x6 w/ 2x4 WALLS OR (3) 2x6 w/ 2x6 WALLS, UNLESS OTHERWISE NOTED.
 - ALL HEADERS TO HAVE (1) 2x4 OR 2x6 JACK EACH END, UNLESS OTHERWISE NOTED.
 - ALL EXTERIOR WALLS TO BE 4" AND ALL INTERIOR WALLS TO BE 3 1/2", UNLESS OTHERWISE NOTED.
 - HATCHED AREAS INDICATE DROPPED CEILINGS. ALL DROPPED CEILINGS ARE 12" UNLESS OTHERWISE NOTED.
 - SEE "BRACED WALL PANEL DETAIL SHEET" FOR SPECIAL WALL FRAMING LOCATIONS AND HEADER SIZES, IF APPLICABLE.
 - SEE STANDARD DETAIL CATEGORY "IT" SHEET(S) FOR INTERIOR TRIM DETAILS.
 - SEE ARCHITECTURAL DETAIL SHEET "AD" FOR HOUSE SPECIFIC INTERIOR TRIM OPTION TABLE.
 - ALL WINDOWS HAVE 7'-0 1/2" HEADER HEIGHT UNLESS OTHERWISE NOTED.



SECOND FLOOR PLAN
SCALE: 1/4" = 1'-0"

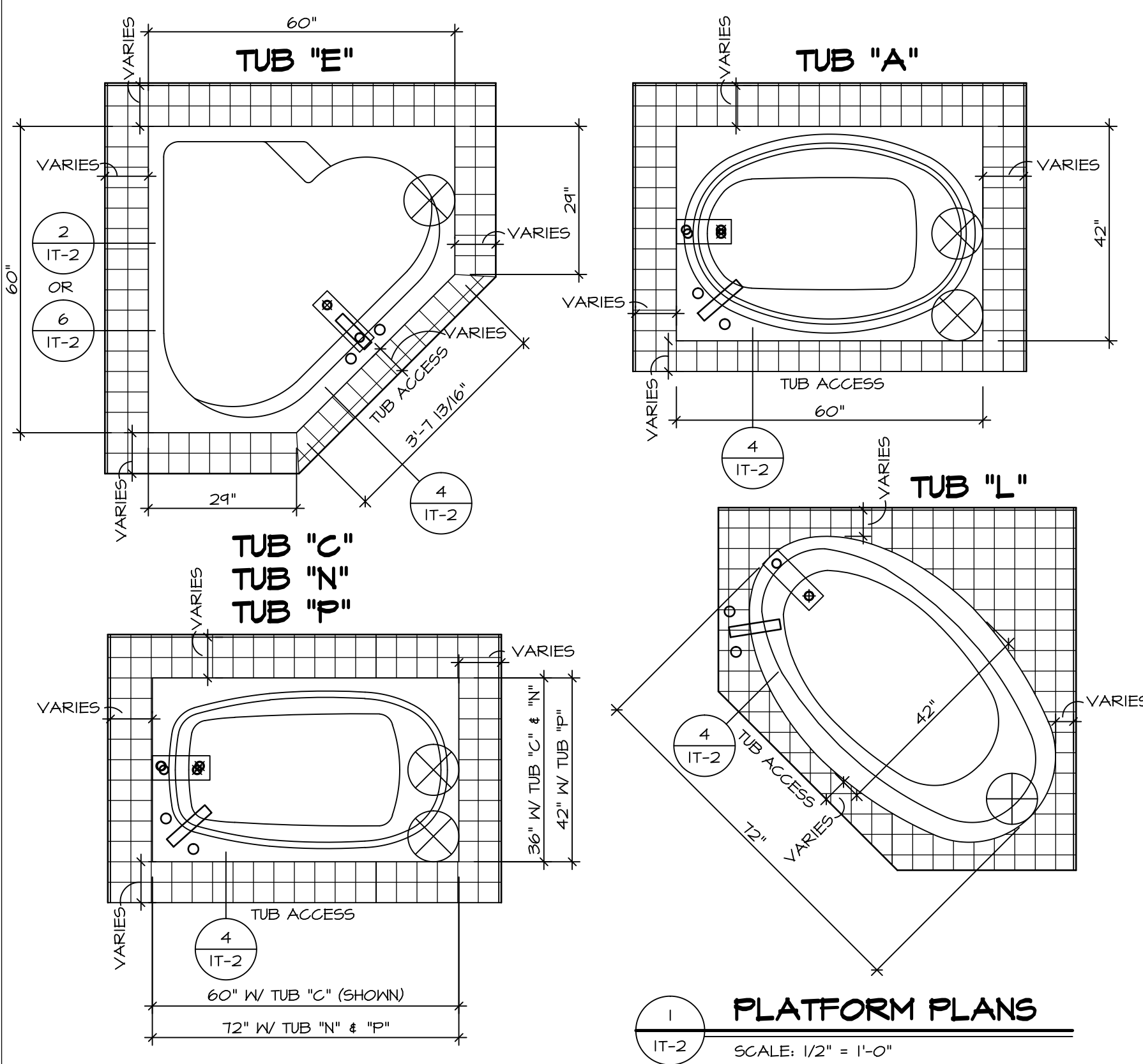
| SHEET NO. | MODEL | SET NO. | VERSION | DATE | OPTION | REMARKS |
|-----------|---------|---------|---------|----------|------------------------|---------|
| A-9 | RAVENNA | 03 | 03 | 08/02/16 | TH - DRAWING ALIGNMENT | |
| 49 | RAVENNA | 03 | 03 | 08/02/16 | TH - DRAWING ALIGNMENT | |



SET NO. RYNOO
VERSION 03
DRAWN BY
DATE:
OPTION

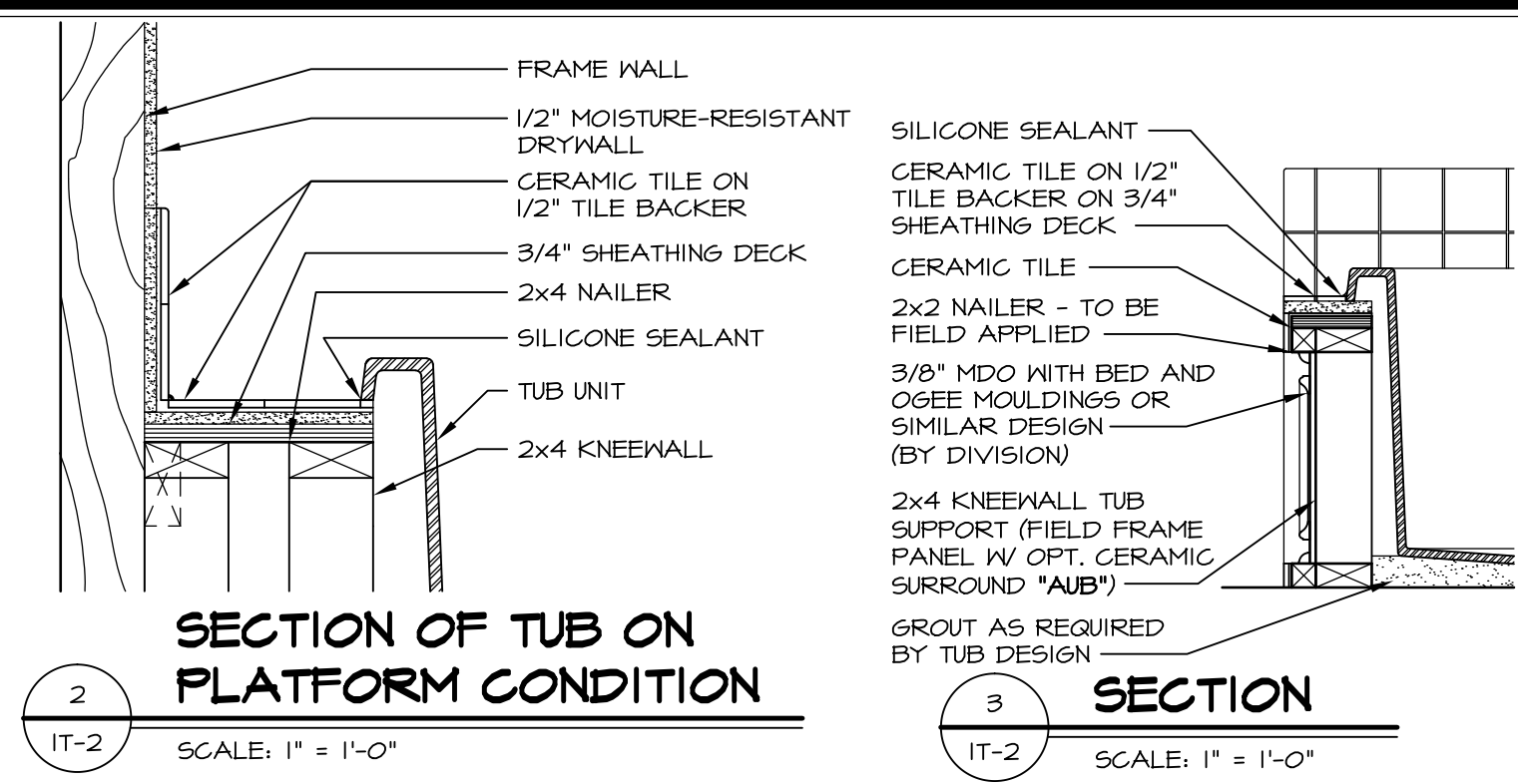
RAVENNA
SECOND FLOOR PLAN

OPTION DESCRIPTION

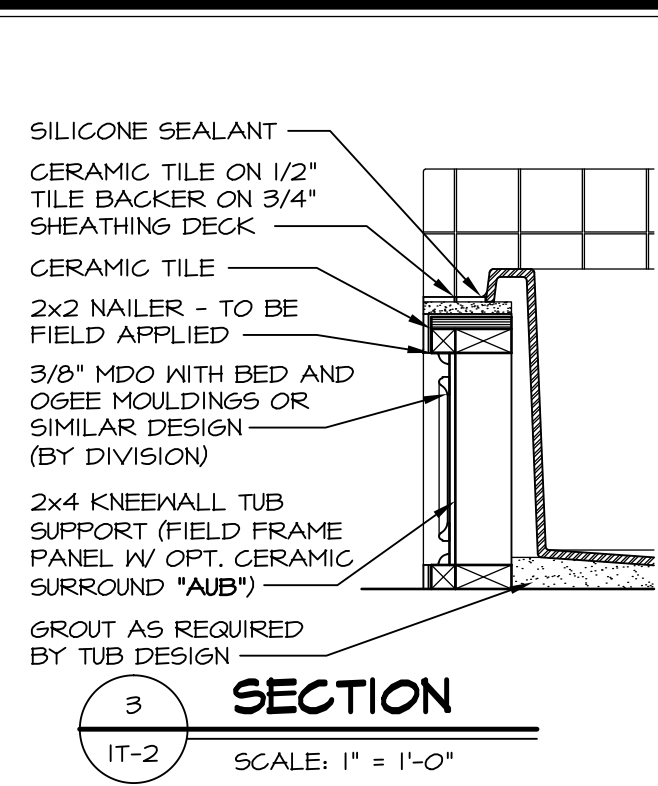


1 PLATFORM PLANS
SCALE: 1/2" = 1'-0"

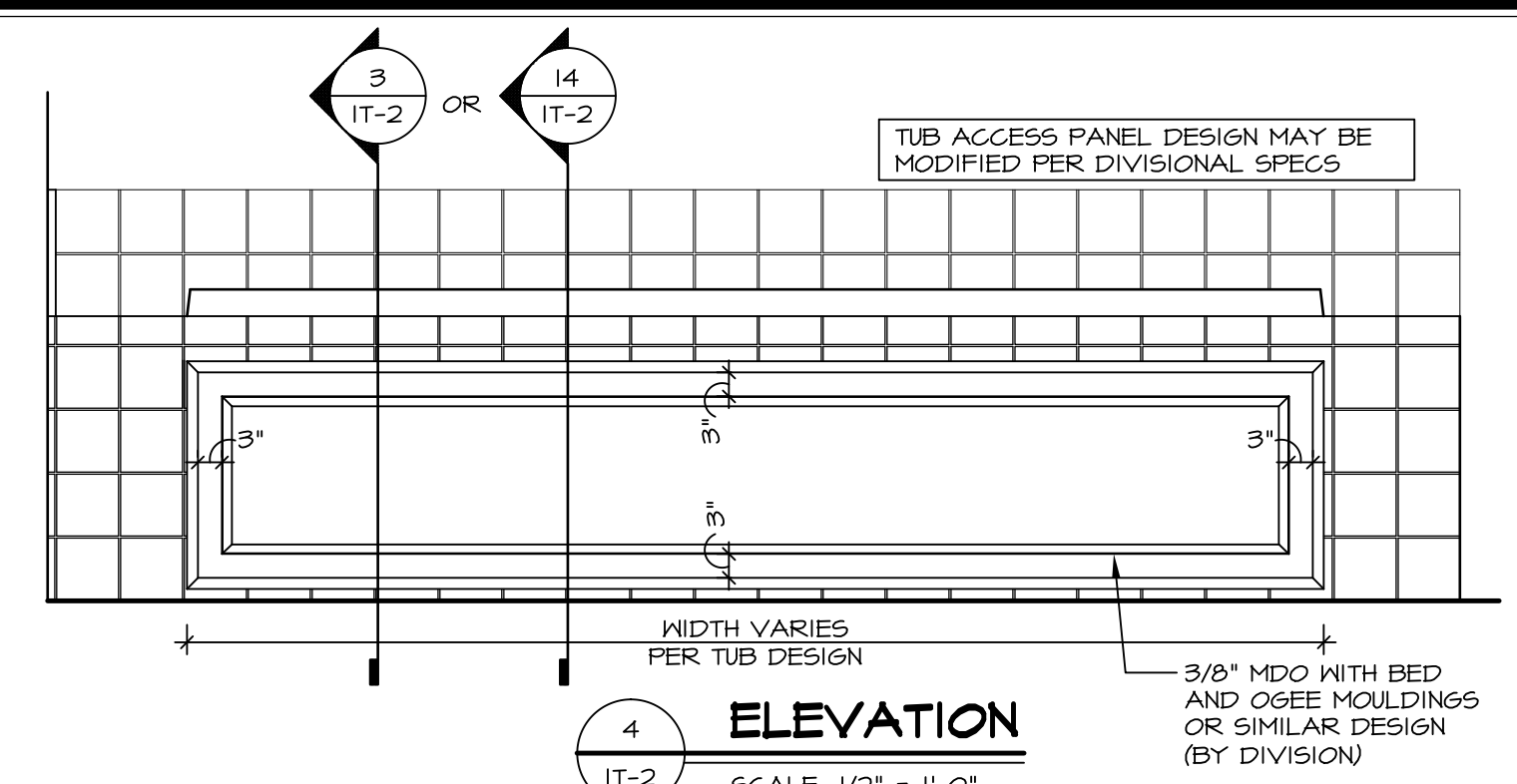
| TUB | MANUF. | HEIGHT | WIDTH | LENGTH | TUB DECK PANEL HEIGHT |
|-----|-----------------|---------|-------|--------|-----------------------|
| "A" | KOHLER/STERLING | 18 3/4" | 42" | 60" | 17 1/8" |
| "C" | KOHLER/STERLING | 18 3/4" | 36" | 60" | 17 1/8" |
| "E" | KOHLER/STERLING | 19 1/2" | 60" | 60" | 17 7/8" |
| "L" | KOHLER/STERLING | 18 1/2" | 42" | 72" | 16 7/8" |
| "N" | KOHLER/STERLING | 18 3/4" | 36" | 72" | 17 1/8" |
| "P" | KOHLER/STERLING | 18 3/4" | 42" | 72" | 17 1/8" |



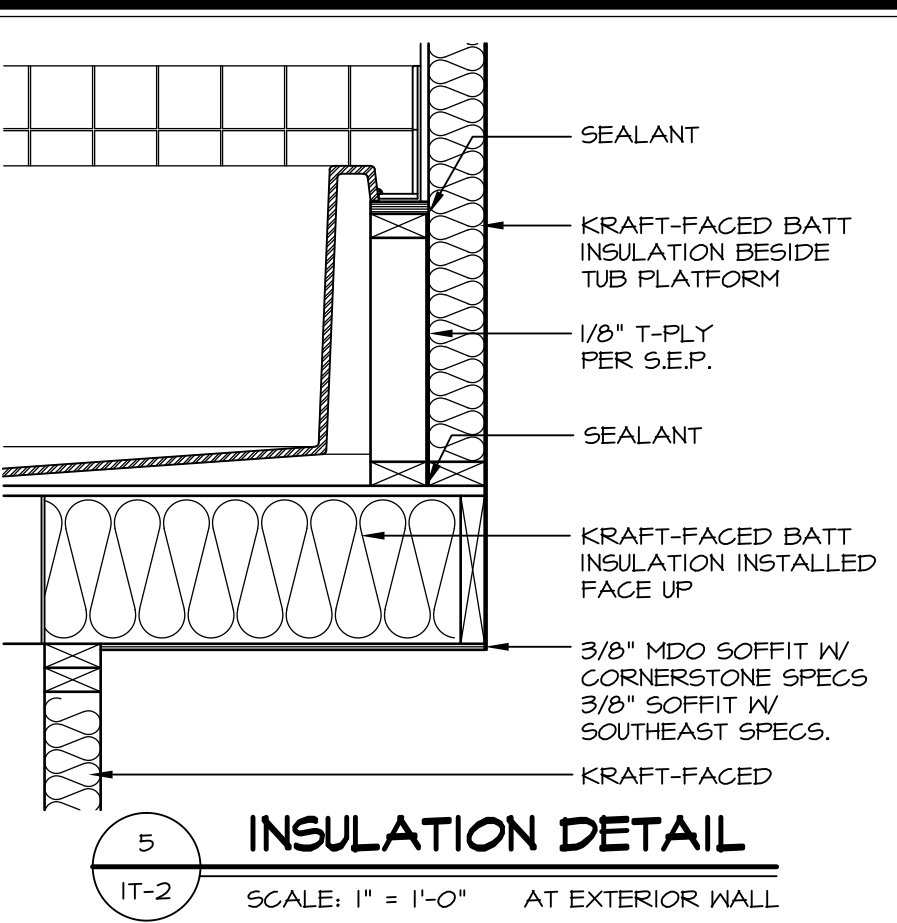
2 SECTION OF TUB ON PLATFORM CONDITION
SCALE: 1" = 1'-0"



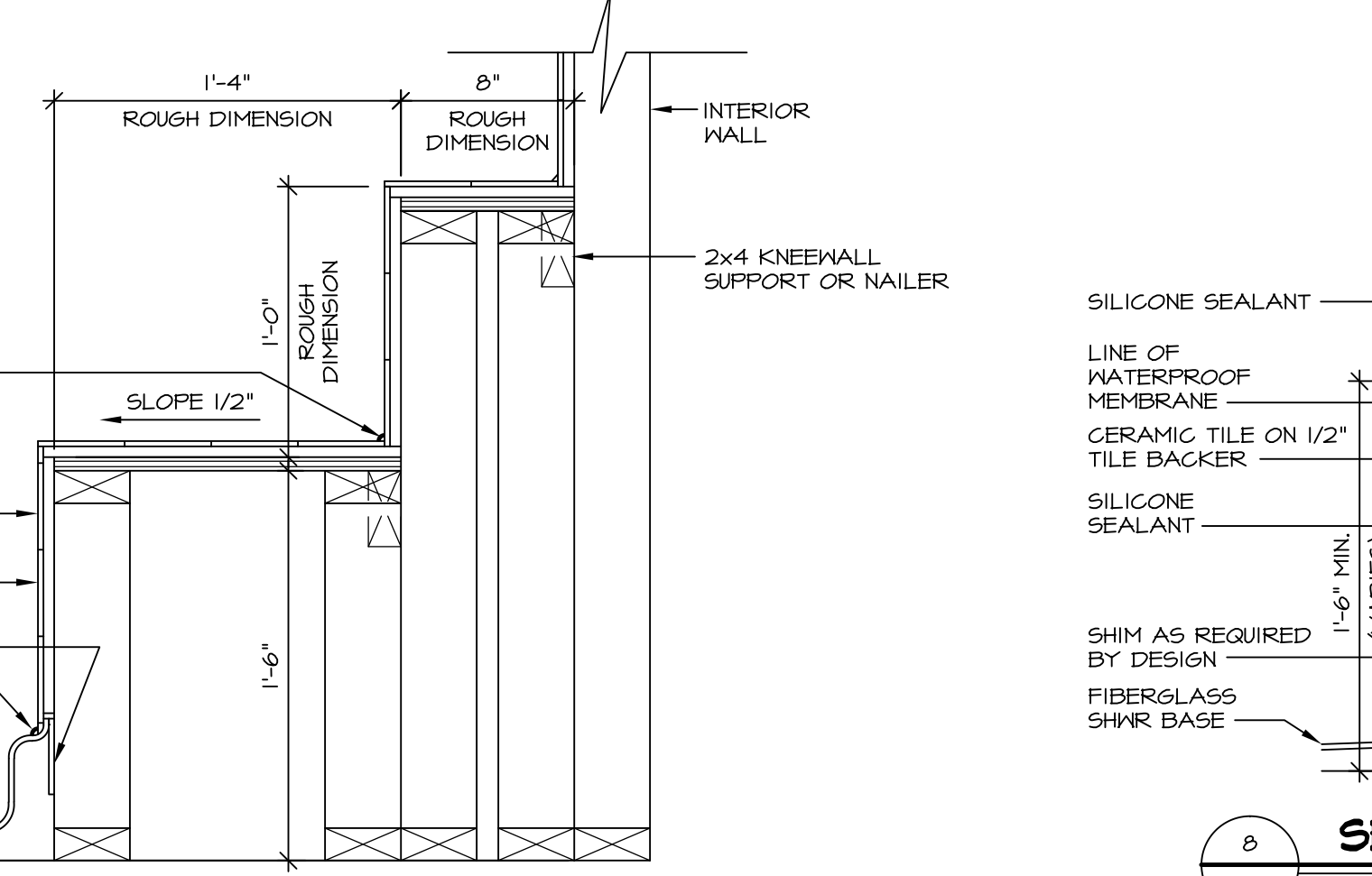
3 SECTION OF TUB TO WALL CONDITION
SCALE: 1" = 1'-0"



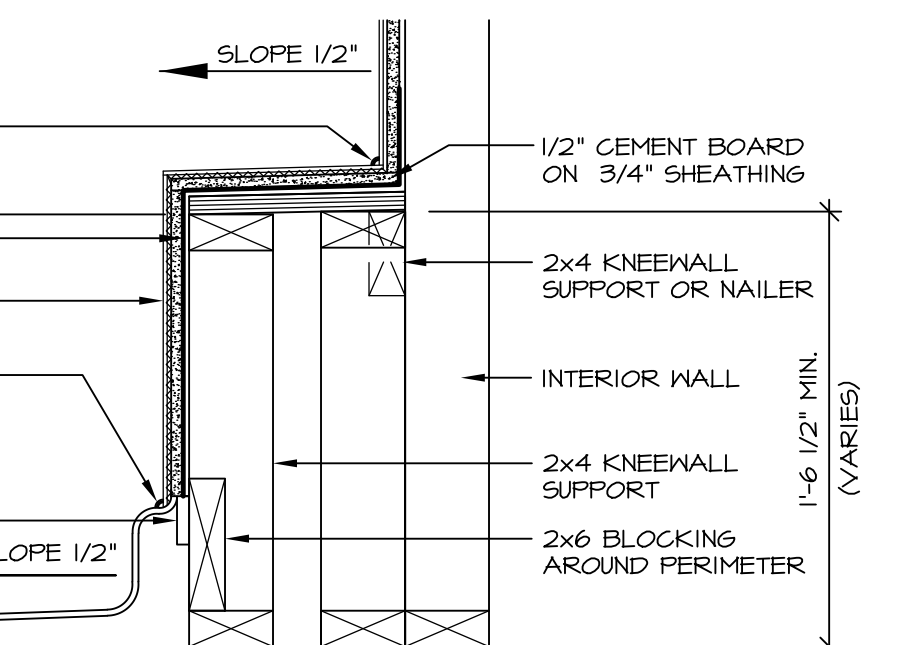
4 ELEVATION
SCALE: 1/2" = 1'-0"



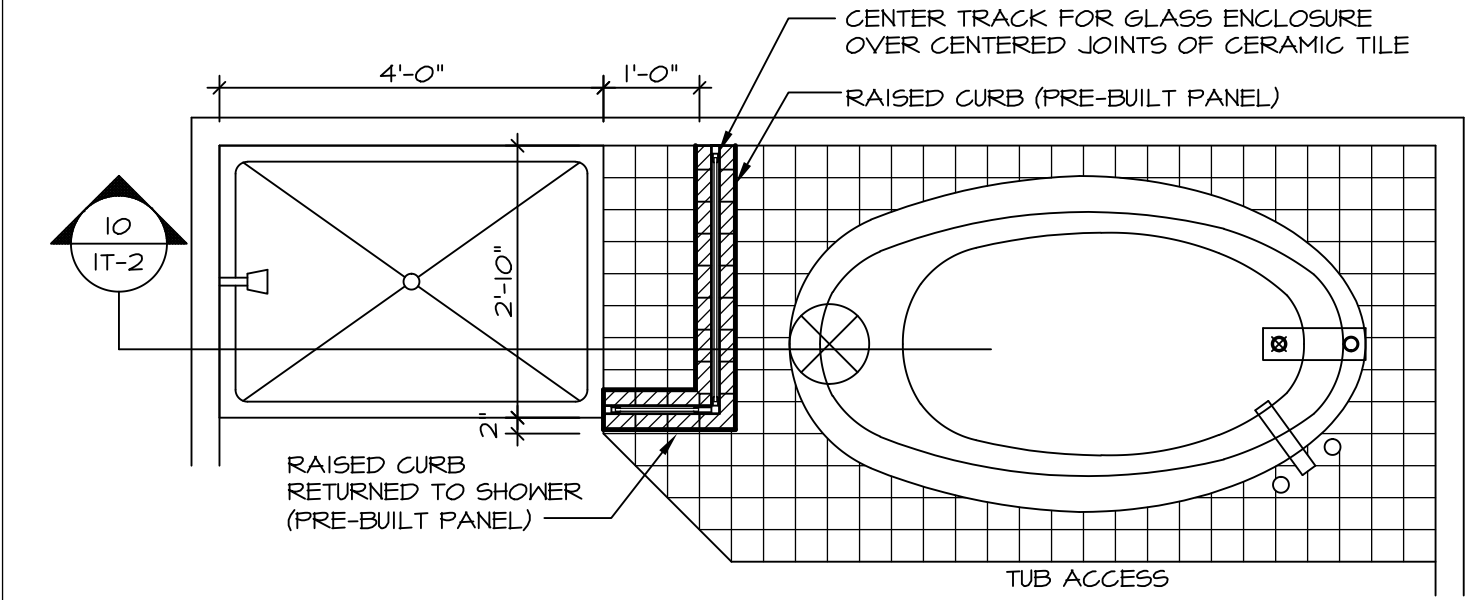
5 INSULATION DETAIL
SCALE: 1" = 1'-0" AT EXTERIOR WALL



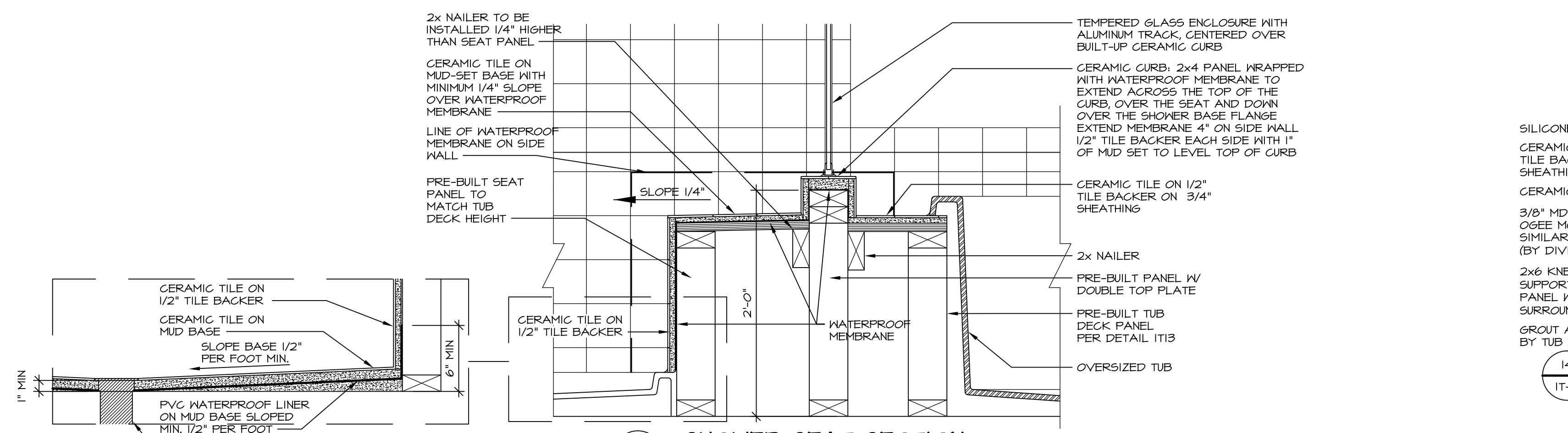
7 SECTION OF SHOWER SEAT AND SHELF
SCALE: 1/2" = 1'-0"



8 SECTION OF SHOWER SEAT
SCALE: 1-1/2" = 1'-0" FIBERGLASS SHOWER BASE



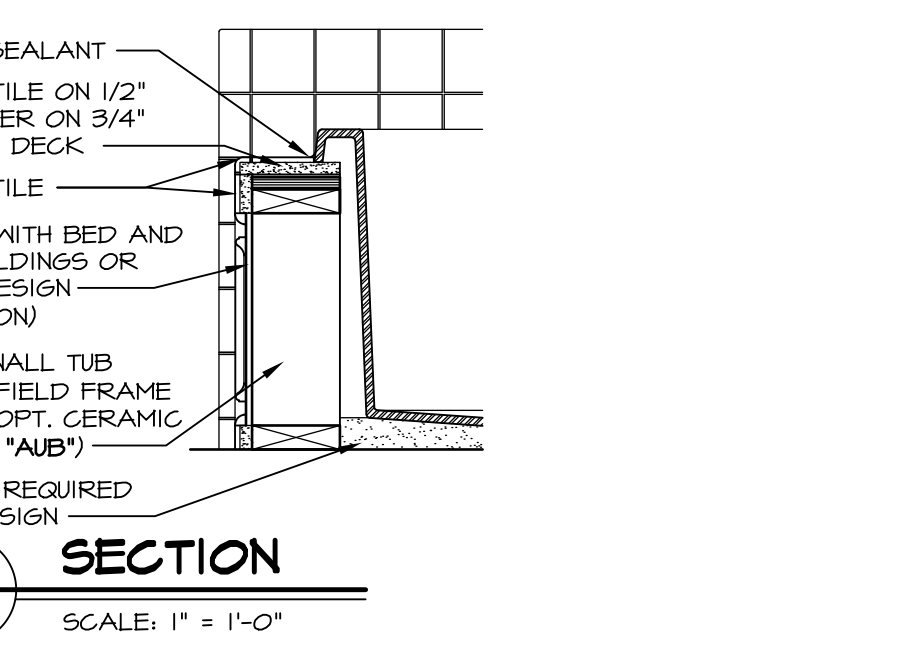
9 SHOWER SEAT PLAN / DETAIL
SCALE: 1/2" = 1'-0"



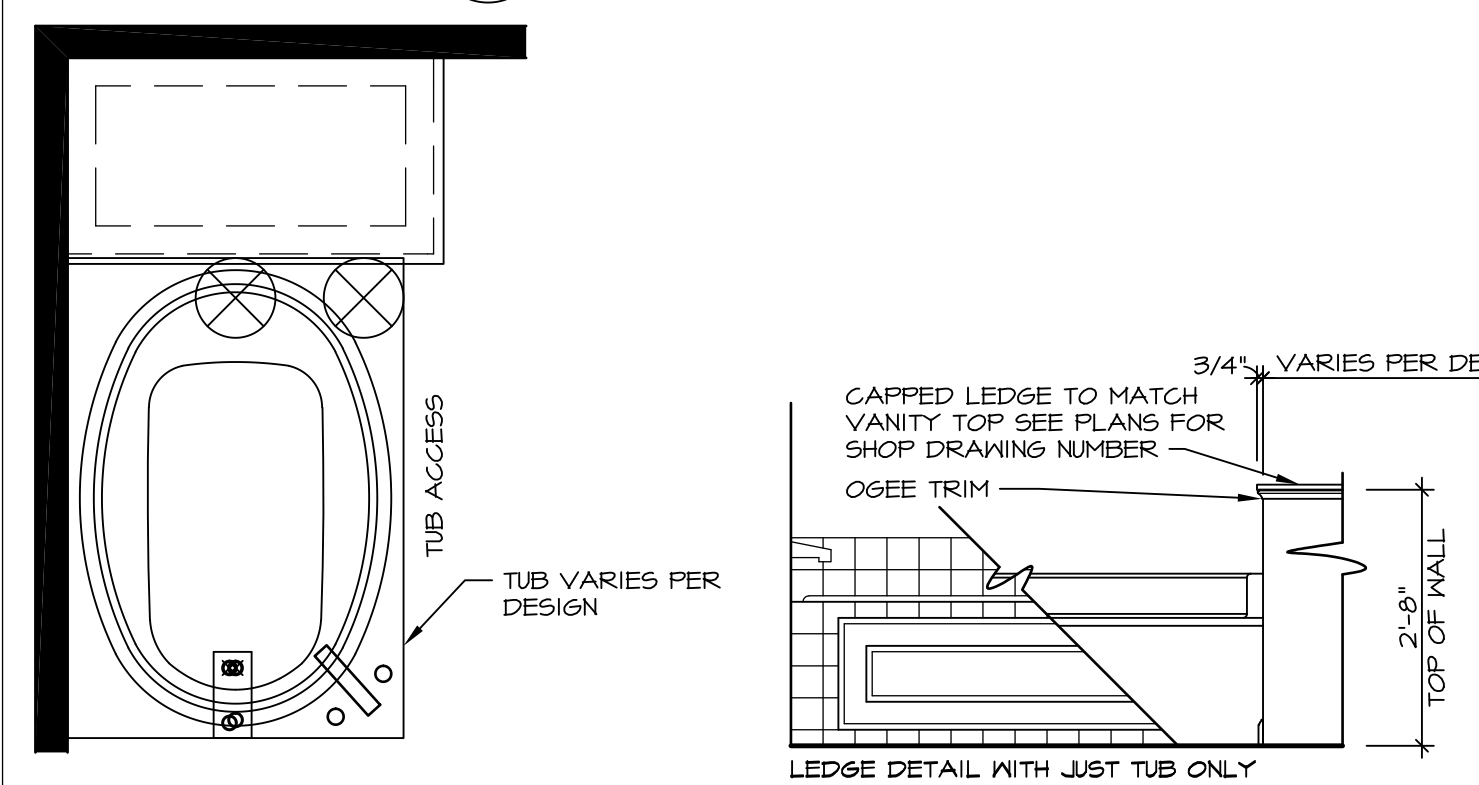
10 SHOWER SEAT SECTION
SCALE: 1-1/2" = 1'-0"



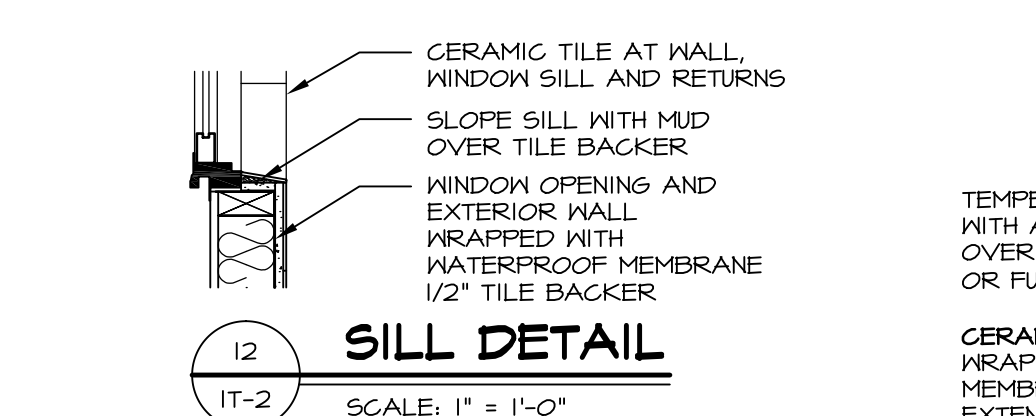
ALTERNATE SHOWER PAN DETAIL



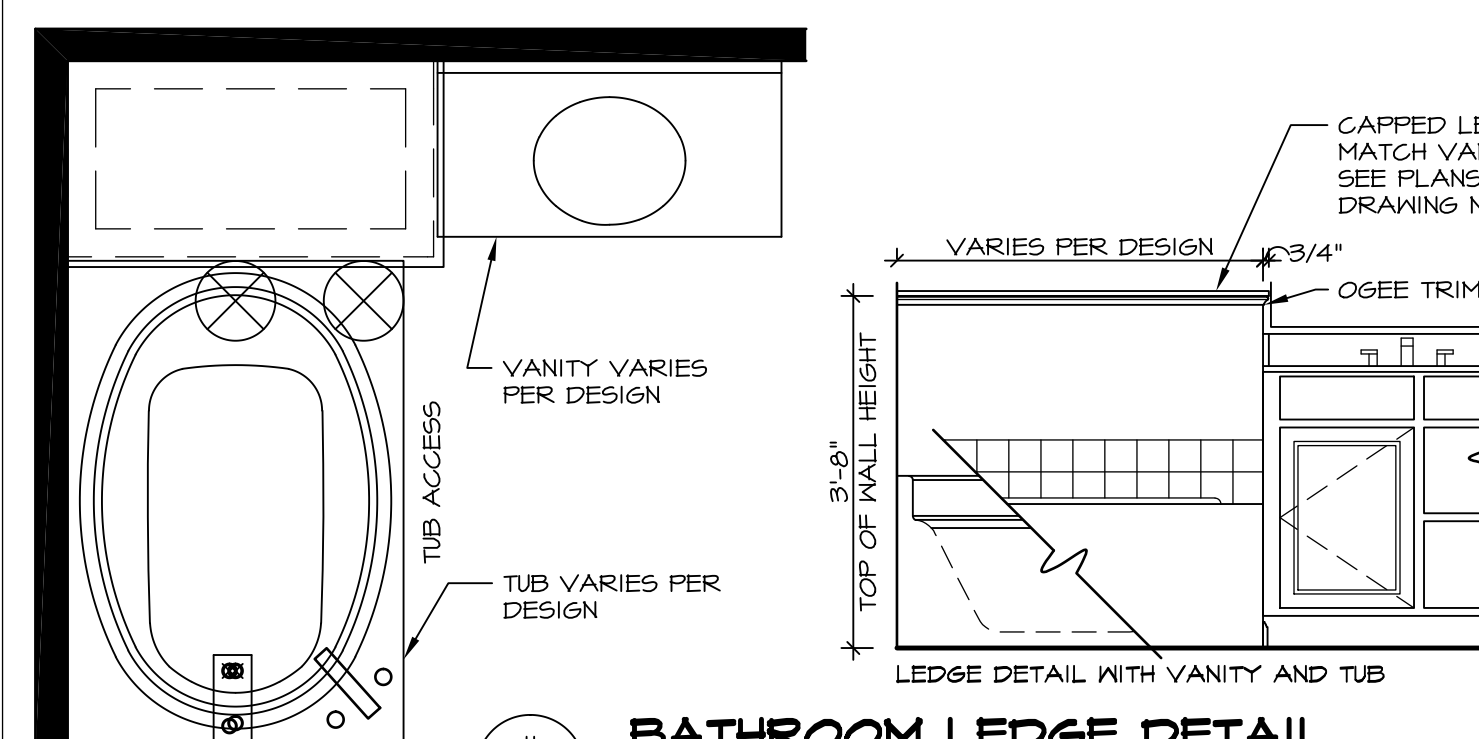
14 SECTION
SCALE: 1" = 1'-0"



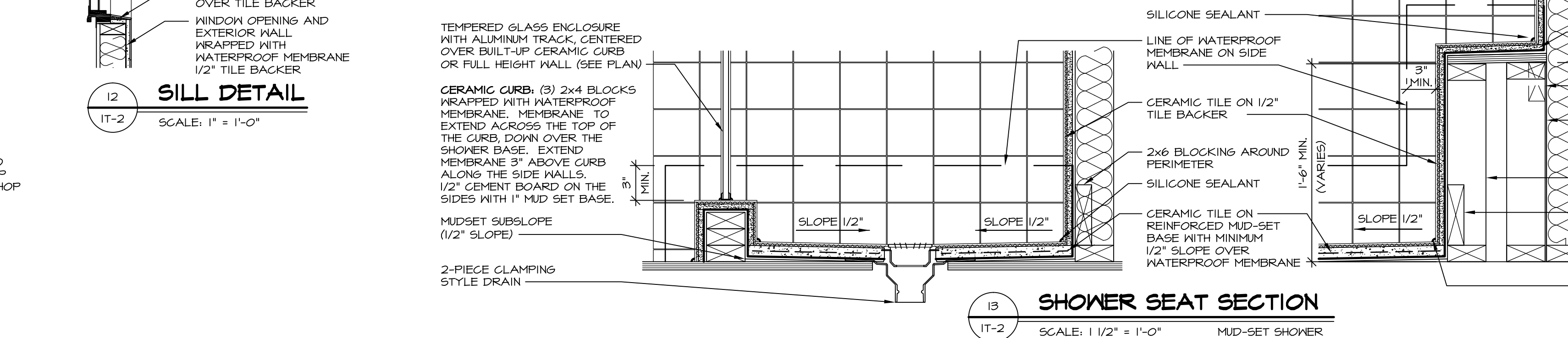
11 BATHROOM LEDGE DETAIL
SCALE: 1/2" = 1'-0"



12 SILL DETAIL
SCALE: 1" = 1'-0"



11 BATHROOM LEDGE DETAIL
SCALE: 1/2" = 1'-0"



13 SHOWER SEAT SECTION
SCALE: 1/2" = 1'-0" MUD-SET SHOWER

REMARKS

REV. NO. DATE

SET NO. NVR

VERSION

DRAWN BY

DATE:

OPTION

MODEL

STANDARD DETAILS

DRAWING TITLE

INTERIOR TRIM DETAILS

BATH DETAILS

OPTION DESCRIPTION

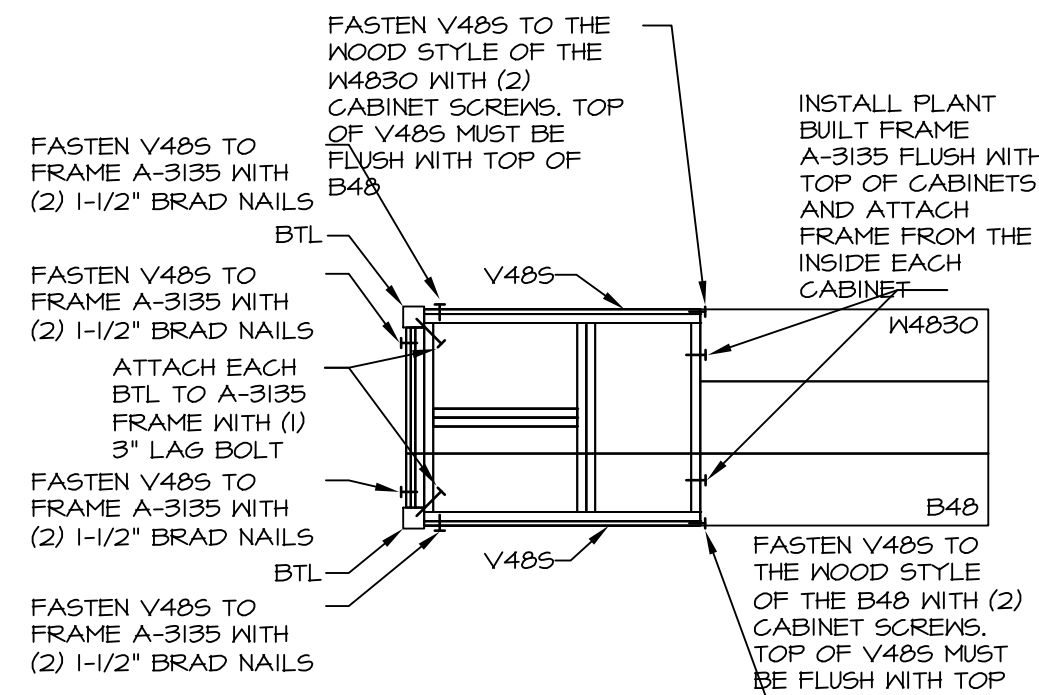
IT-2

NVR, Inc., expressly reserves its common law copyright and other proprietary rights in these plans. These plans are not to be copied, reproduced, or otherwise used in any way without the written consent of NVR, Inc.

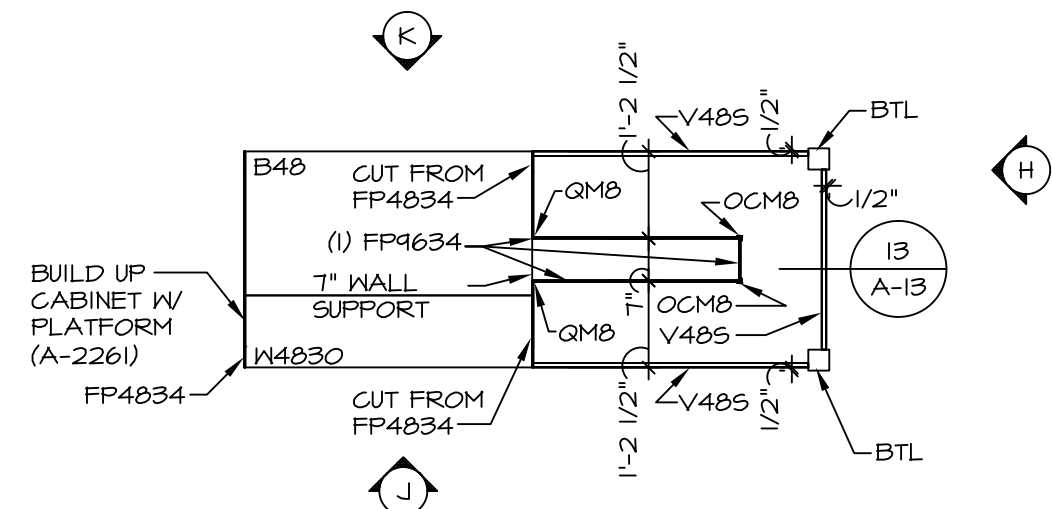
NVR

NVR, Inc.
Architectural Services
21 Bay View
Frederick, MD 21702

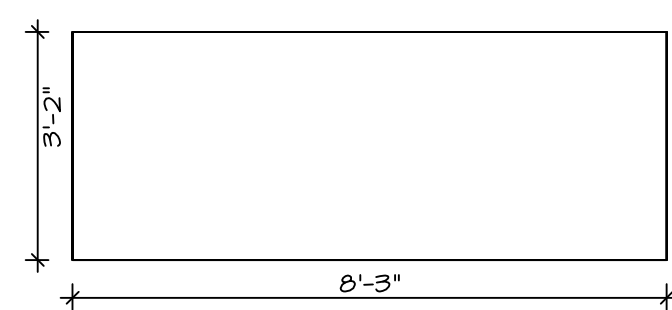
J:\Dwg\NVR\Interior Trim\IT2.dwg 11/07/16 - 10:52 am



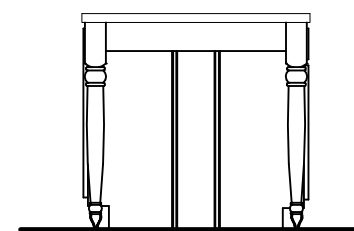
COUNTERTOP SUPPORT FRAME
SCALE: 3/8\" = 1'-0\"
A-13



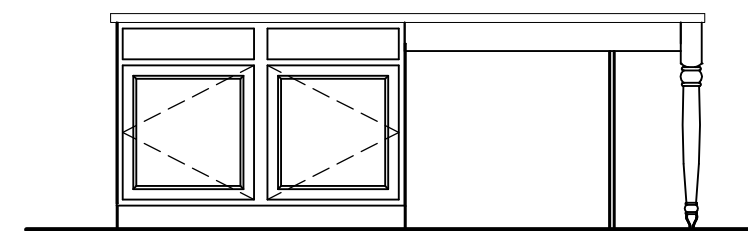
KITCHEN CABINET PLAN - KC-3217
GOURMET KITCHEN ISLAND *KFF* SCALE: 3/8\" = 1'-0\"
A-13



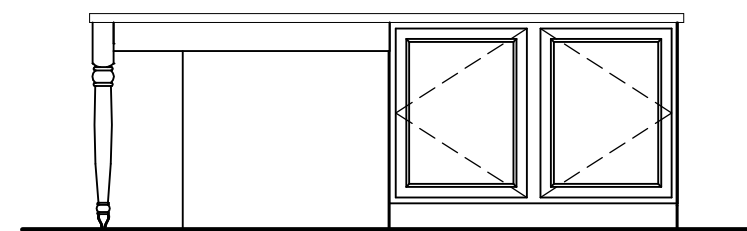
COUNTERTOP PLAN - KT-3217
GOURMET KITCHEN ISLAND *KFF* SCALE: 3/8\" = 1'-0\"
A-13



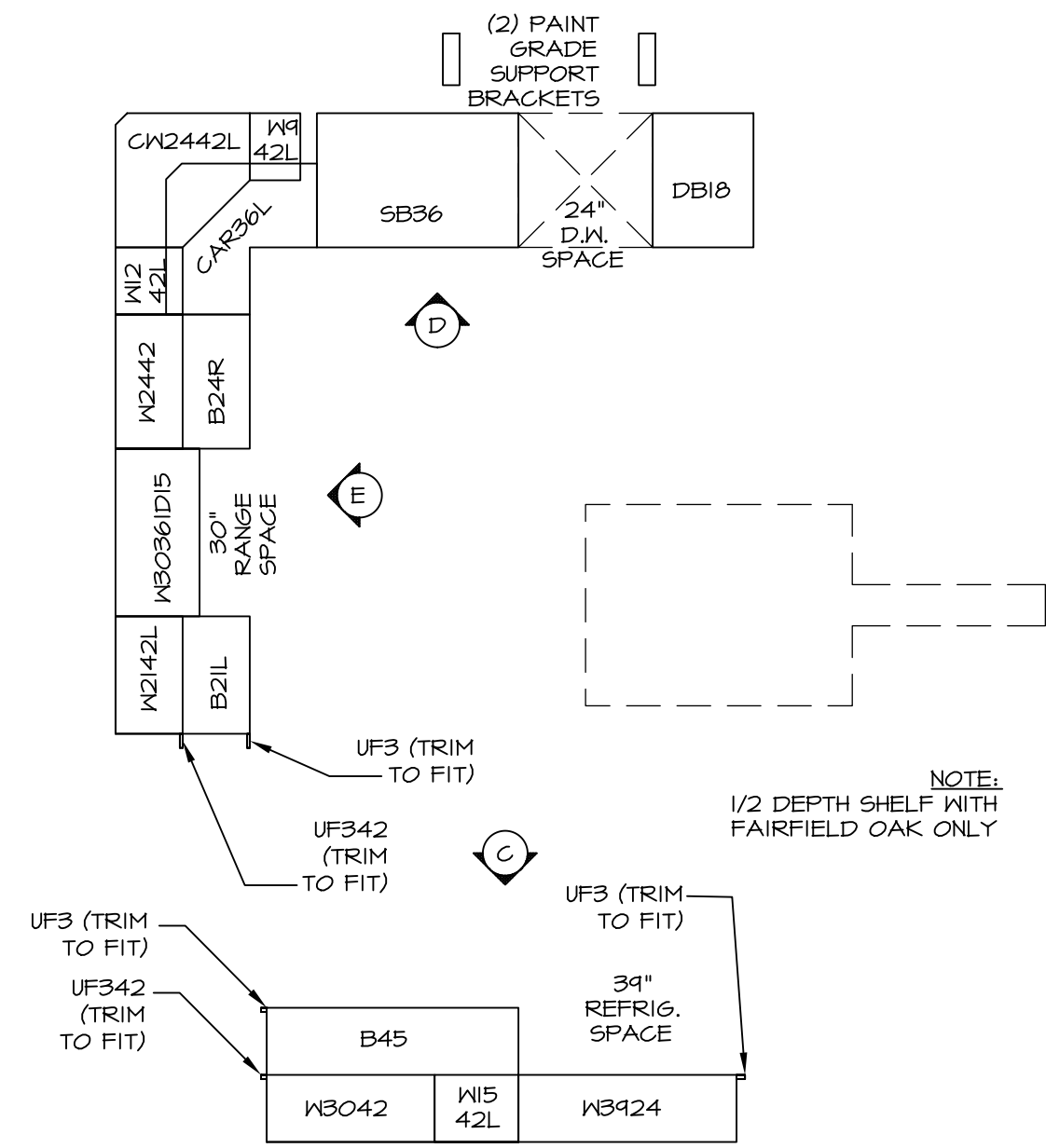
KITCHEN ELEVATION
SCALE: 3/8\" = 1'-0\"
H



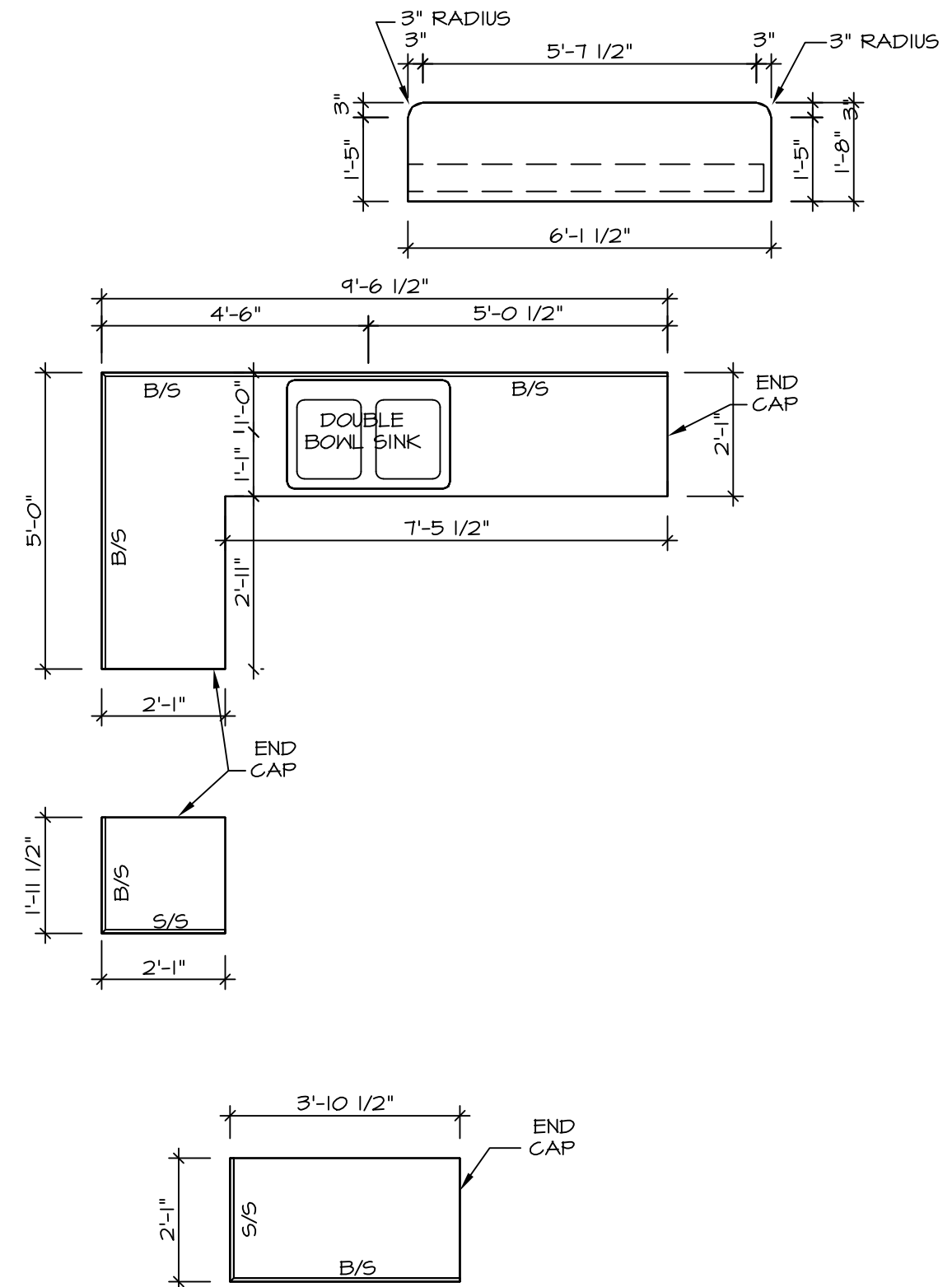
KITCHEN ELEVATION
SCALE: 3/8\" = 1'-0\"
K



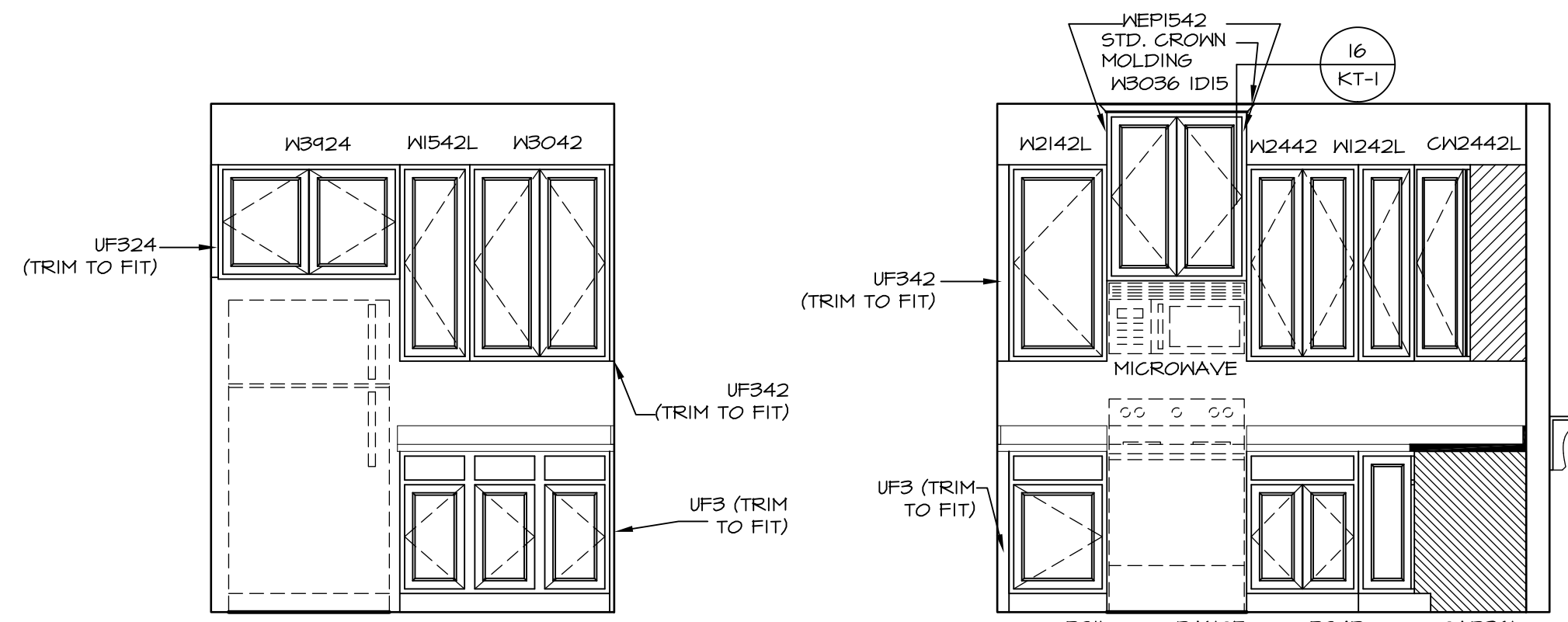
KITCHEN ELEVATION
SCALE: 3/8\" = 1'-0\"
J



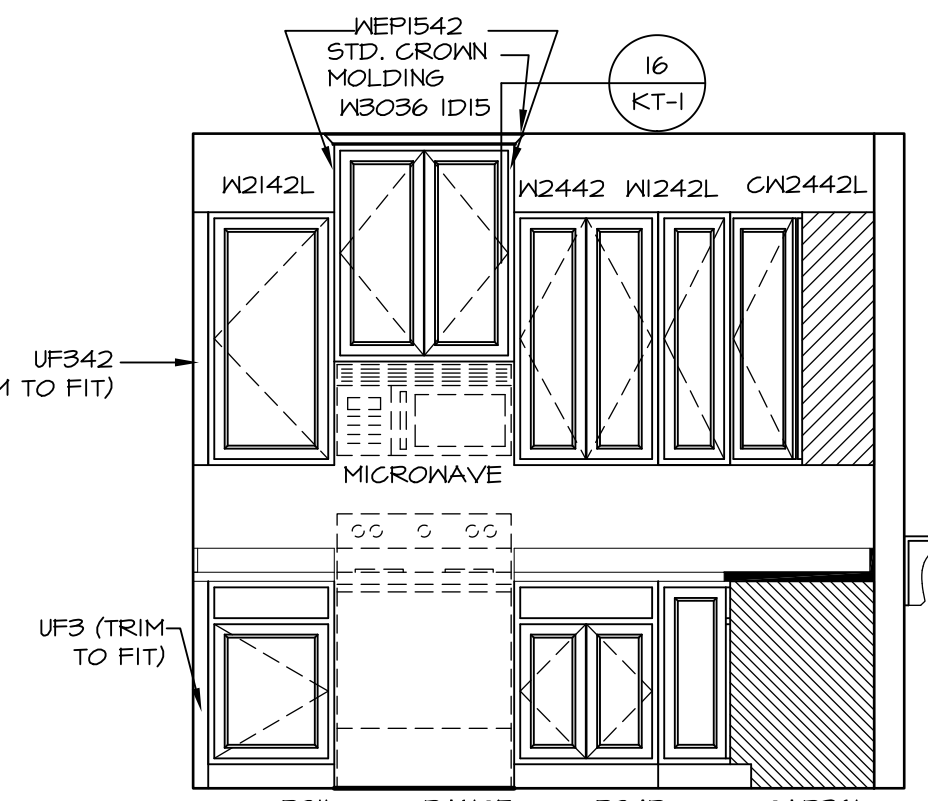
KITCHEN CABINET PLAN - KC-2856
SCALE: 3/8\" = 1'-0\"
A-13



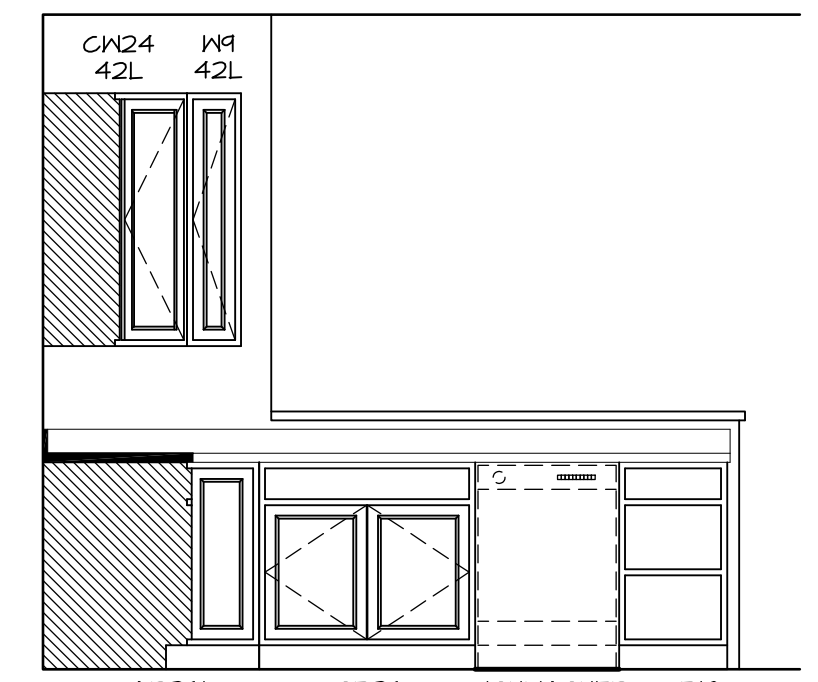
KITCHEN COUNTERTOP PLAN - KT-2856
SCALE: 3/8\" = 1'-0\"
A-13



CABINET ELEVATION
SCALE: 3/8\" = 1'-0\"
C



CABINET ELEVATION
SCALE: 3/8\" = 1'-0\"
E



CABINET ELEVATION
SCALE: 3/8\" = 1'-0\"
D

| REV. NO. | DATE | REMARKS |
|----------|------|---------|
| | | |
| | | |
| | | |
| | | |

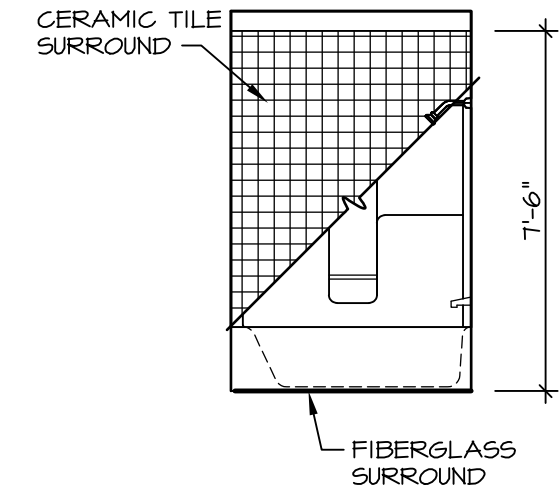
| REV. NO. | DATE | REMARKS |
|----------|------|---------|
| | | |
| | | |
| | | |
| | | |

NVR, Inc., owner, expressly reserves its copyright in these plans. These plans are not to be reproduced, changed, copied, or otherwise used for any purpose not intended by the architect without the written consent of NVR, Inc.

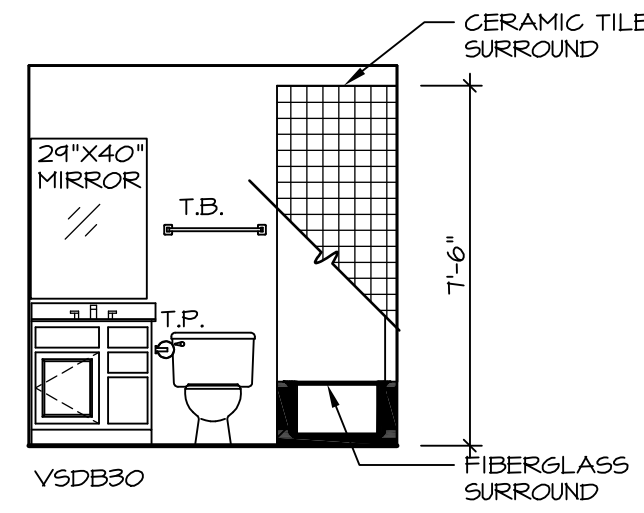
NVR
NVR, Inc.
Architectural Services
Architects
21 Bayview Circle, Ste. A
Frederick, MD 21702

03/07/17 - 10:21 pm

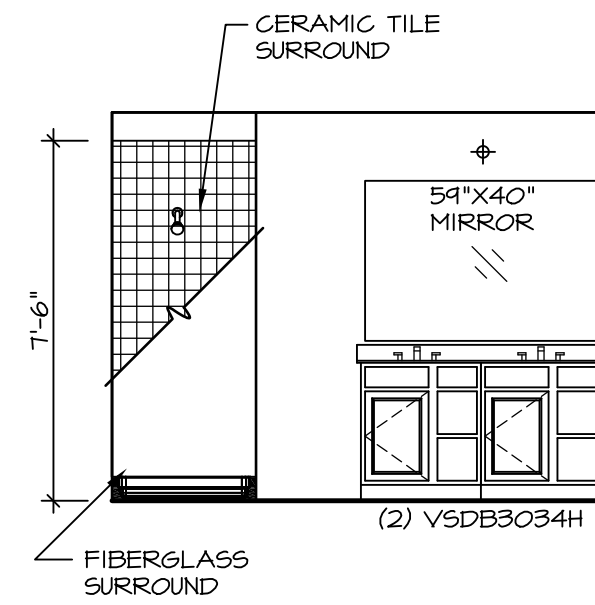
| | | | | | |
|--|--------------------|--------------|----------|-------|--------|
| MODEL RAVENNA A-13 | SET NO. RYNOO | VERSION 03 | DRAWN BY | DATE: | OPTION |
| | DRAWING TITLE | KITCHEN PLAN | | | |
| SHEET NO. | OPTION DESCRIPTION | | | | 60 |



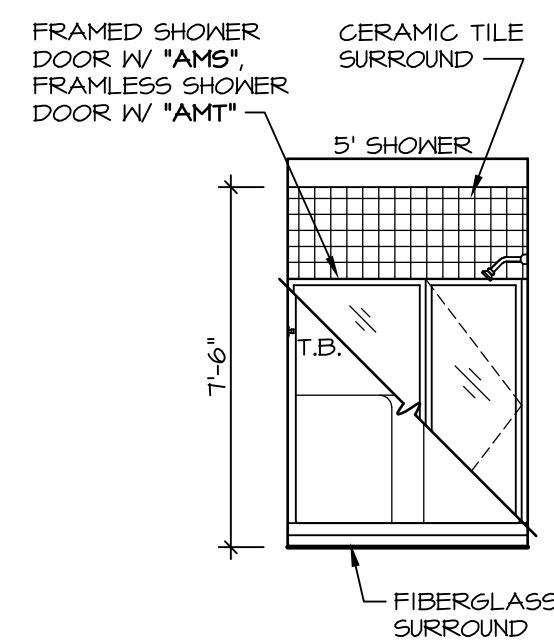
A BASEMENT BATH
SCALE: 1/4" = 1'-0"



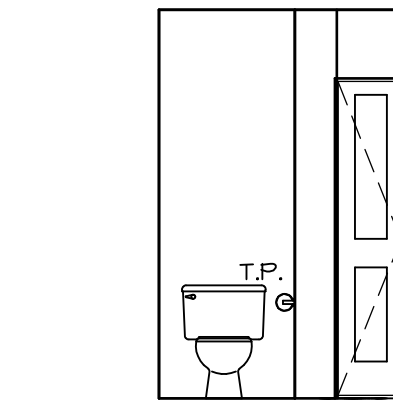
B BASEMENT BATH
SCALE: 1/4" = 1'-0"



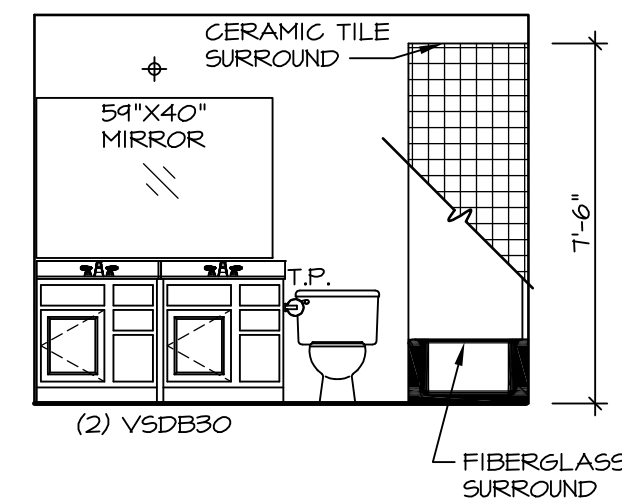
Q OWNER'S BATH
SCALE: 1/4" = 1'-0"



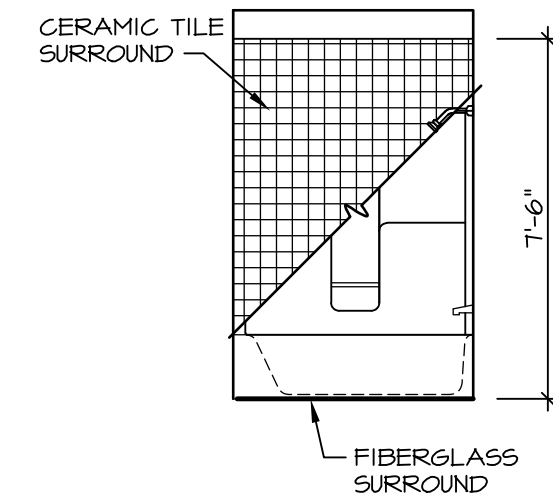
P OWNER'S BATH
SCALE: 1/4" = 1'-0"



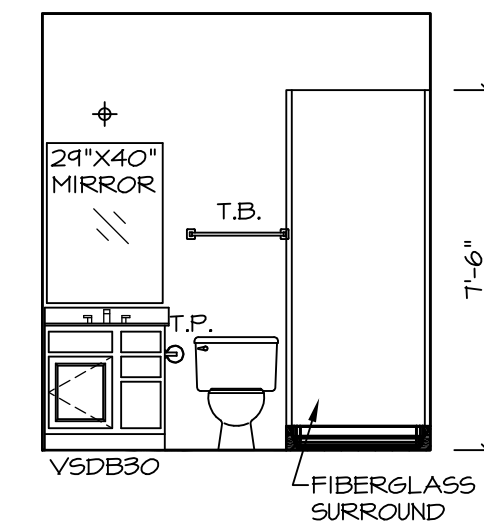
N OWNER'S BATH
SCALE: 1/4" = 1'-0"



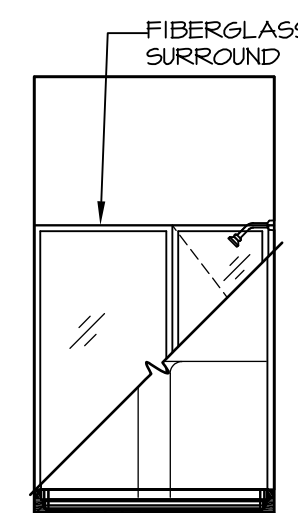
J BATH #1
SCALE: 1/4" = 1'-0"



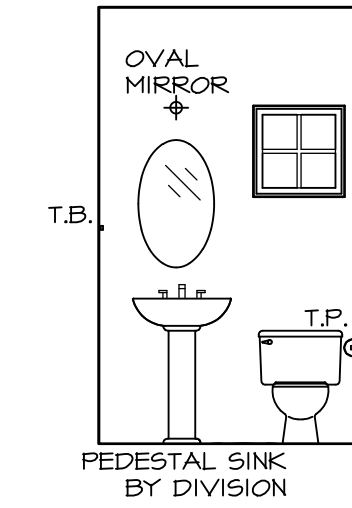
K BATH #1
SCALE: 1/4" = 1'-0"



U FIRST FLOOR BATH
SCALE: 1/4" = 1'-0"



H FIRST FLOOR BATH
SCALE: 1/4" = 1'-0"



C POWDER ROOM
SCALE: 1/4" = 1'-0"

NOTES:

1. TEMPERED GLASS SHOWER ENCLOSURE WITH SWING DOOR OR OPTIONAL SLIDING DOOR BY DIVISION
2. TUB ACCESS PANELS PROVIDED AS NEEDED, ALL MATERIALS BY DIVISION
3. REFER TO SHEET IT-2 FOR TUB AND SHOWER DETAILS.
4. ALL V5DB24-42 DRAWERS TO BE SET ON RIGHT HAND.
5. BATH ELEVATIONS ARE SHOWN PER PLAN.

| | | | |
|--------------------|-----------------|----------|---------|
| SHEET NO. | MODEL | SET NO. | VERSION |
| A-14 | RAVENNA | RVNOO_03 | 03 |
| OPTION DESCRIPTION | DRAWING TITLE | DRAWN BY | DATE: |
| 62 | BATH ELEVATIONS | | OPTION |



NVR, Inc., owner, expressly reserves its copyright in these plans. These plans are not to be reproduced, changed, copied, or otherwise used in any way without the written consent of NVR, Inc.

| REV. NO. | DATE | REMARKS |
|----------|----------|-------------------------|
| 1 | 08/02/16 | TH - DRAINING ALIGNMENT |