

1
A-5 PLUMBING PLAN
SCALE: 1/4" = 1'-0"

SHEET NO.
A-5

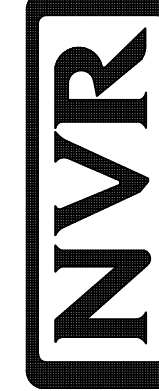
MODEL
NORMANDY

DRAWING TITLE
PLUMBING PLAN

OPTION DESCRIPTION

31

SET NO. NRM00
VERSION 01
DRAWN BY RJC
DATE: 5/14/15
OPTION

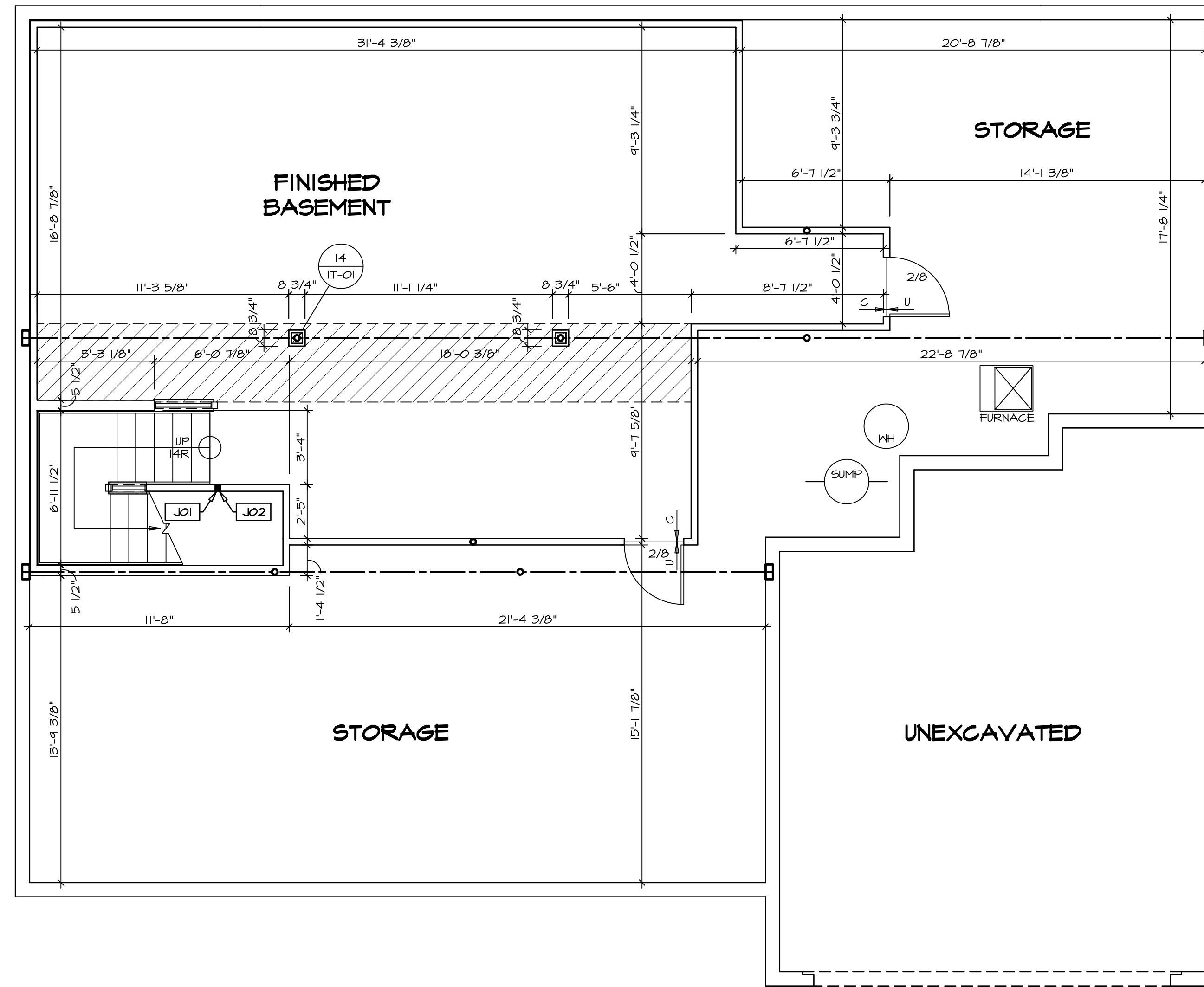


NVR, Inc.
Architectural Services
Architects
21 Bay View, Suite A
Frederick, MD 21702

NVR, Inc., owner, expressly
reserves its copyright and
all other rights in the
plans. These plans are not to be
reproduced, changed, stamped in
any way, or otherwise used,
nor are they to be assigned to
any other person without the
written consent of NVR, Inc.

REV. NO. DATE

REMARKS



LEGEND

- BEARING WALL
- NON BEARING WALL
- INDICATES BEARING FROM POINT-LOAD ABOVE
- JACKS
- BEAM/HEADER
- PAD FOOTING
- STEEL COLUMN
- PORTAL FRAME
- JOIST/TRUSS
- LVL
- ENGINEERING PAGE NUMBER

SEE FC DETAILS FOR FRAMING CONNECTORS

- FLOOR PLAN NOTES**
- ALL HEADERS ARE (2) 2x6 w/ 2x4 WALLS OR (3) 2x6 w/ 2x6 WALLS, UNLESS OTHERWISE NOTED.
 - ALL HEADERS TO HAVE (1) 2x4 OR 2x6 JACK EACH END, UNLESS OTHERWISE NOTED.
 - ALL EXTERIOR WALLS TO BE 4" AND ALL INTERIOR WALLS TO BE 3 1/2", UNLESS OTHERWISE NOTED.
 - HATCHED AREAS INDICATE DROPPED CEILINGS. ALL DROPPED CEILINGS ARE 12" UNLESS OTHERWISE NOTED.
 - SEE 'BRACED WALL PANEL DETAIL SHEET' FOR SPECIAL WALL FRAMING LOCATIONS AND HEADER SIZES, IF APPLICABLE.
 - SEE STANDARD DETAIL CATEGORY 'IT' SHEET(S) FOR INTERIOR TRIM DETAILS.
 - SEE ARCHITECTURAL DETAIL SHEET 'AD' FOR HOUSE SPECIFIC INTERIOR TRIM OPTION TABLE.
 - ALL WINDOWS HAVE 7'-0 1/2" HEADER HEIGHT UNLESS OTHERWISE NOTED.

- GYPSUM NOTES**
- AT GARAGE:
GYPSUM BOARD AT COMMON WALLS, CEILING, BEAM WRAPS AND SUPPORTS PER STANDARD DETAIL FA-1(b) FIRE ASSEMBLIES OR AS REQUIRED BY LOCAL CODE.
- AT STAIRS:
1/2" GYPSUM BOARD AT UNDERSIDE OF STAIRS AND WALLS IN CLOSET

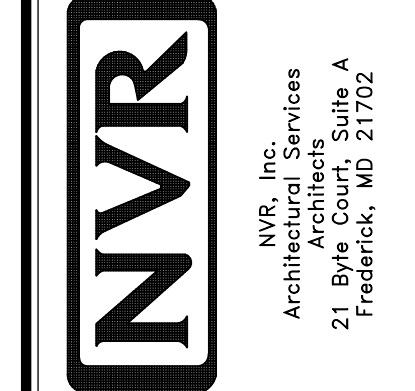
BASEMENT JACK SCHEDULE

IDENTIFIER	DESCRIPTION	OPTIONS	ENG. NUM.	REMARKS
J01	JACK - 2x4 SPF STUD GRADE		B10	
J02	JACK - 2x4 SPF STUD GRADE		B22	

REVISIONS

REV. NO.	DATE	DESCRIPTION
1	08/07/16	NL - DRAWING ALIGNMENT
2	11/05/16	TH - STANDARD DETAILS 3.0
3	4/20/17	SFK - ADDED BASEMENT FLOOR PLAN JACK SCHEDULE

NVR, Inc., owner, expressly reserves its copyright in these plans. These plans are not to be reproduced, changed, copied in any way, or used for any other project without the written consent of NVR, Inc.

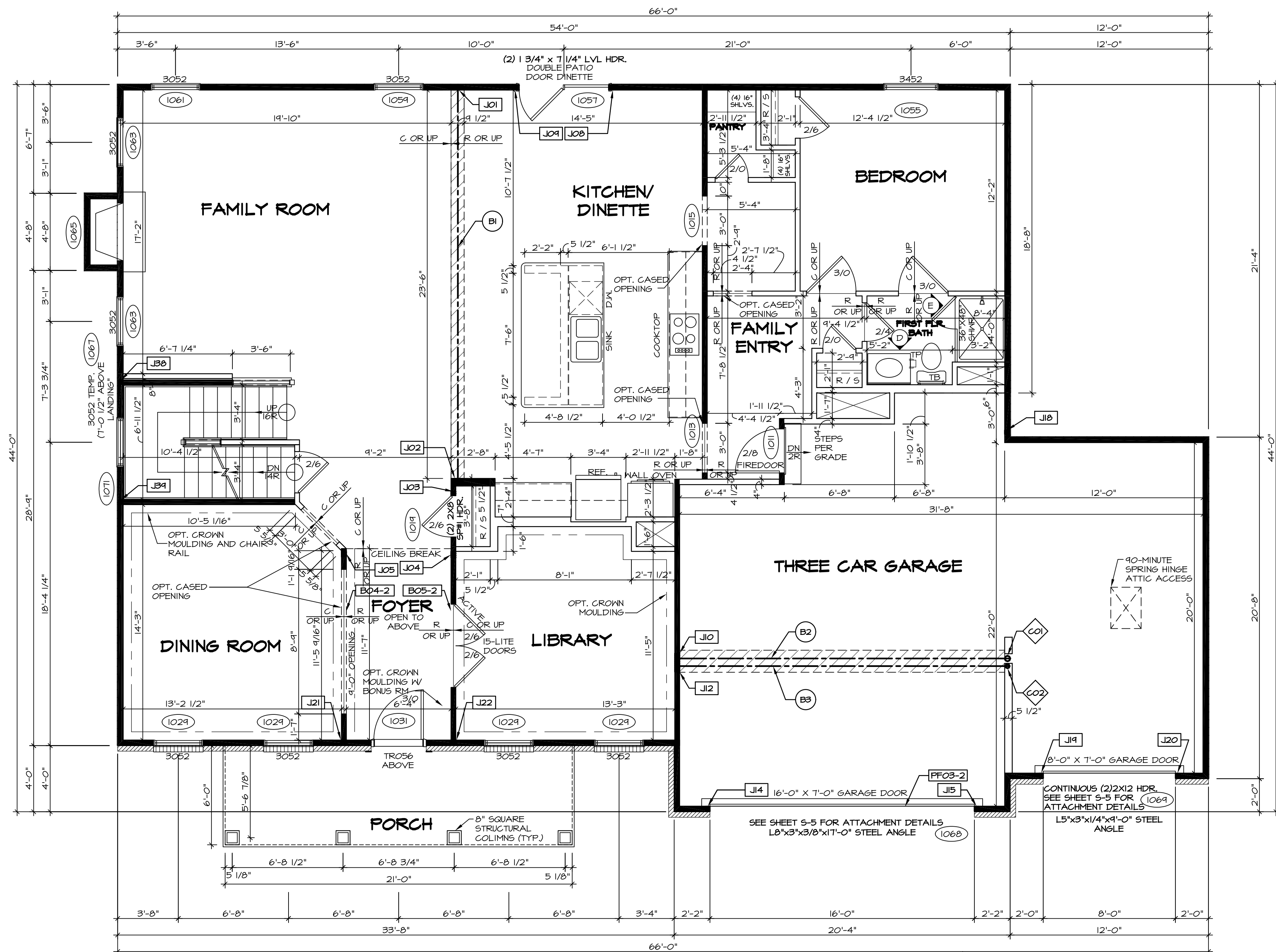


SET NO. NRM00
VERSION 01
DRAWN BY SGA
DATE: 6/29/15
OPTION

MODEL: **NORMANDY**
DRAWING TITLE: **BASEMENT FLOOR PLAN**
OPTION DESCRIPTION:

SHEET NO. **A-6**
34

BASEMENT FLOOR PLAN
SCALE: 1/4" = 1'-0"



FIRST FLOOR PLAN

SCALE: 1/4" = 1'-0"

LEGEND	
	BEARING WALL
	NON BEARING WALL
	INDICATES BEARING FROM POINT-LOAD ABOVE
	JACKS
	BEAM/HEADER
	PAD FOOTING
	STEEL COLUMN
	PORTAL FRAME
	JOIST/TRUSS
	LVL
	ENGINEERING PAGE NUMBER

FLOOR PLAN NOTES

- ALL HEADERS ARE (2) 2x6 W/ 2x4 WALLS OR (3) 2x6 W/ 2x6 WALLS, UNLESS OTHERWISE NOTED.
- ALL EXTERIOR WALLS TO BE 4" AND ALL INTERIOR WALLS TO BE 3 1/2" UNLESS OTHERWISE NOTED.
- HATCHED AREAS INDICATE DROPPED CEILING. ALL DROPPED CEILING ARE 12" UNLESS OTHERWISE NOTED.
- SEE "BRACED WALL PANEL DETAIL SHEET" FOR SPECIAL WALL FRAMING LOCATIONS AND HEADER SIZES, IF APPLICABLE.
- SEE STANDARD DETAIL CATEGORY "IT" SHEET(S) FOR INTERIOR TRIM DETAILS.
- SEE ARCHITECTURAL DETAIL SHEET "AD" FOR HOUSE SPECIFIC INTERIOR TRIM OPTION TABLE.
- ALL WINDOWS HAVE 7'-0 1/2" HEADER HEIGHT UNLESS OTHERWISE NOTED.

GYPHUM NOTES

AT GARAGE:
GYPSUM BOARD AT COMMON WALLS, CEILING, BEAM WRAPS AND SUPPORTS PER STANDARD DETAIL FA-1(b) FIRE ASSEMBLIES OR AS REQUIRED BY LOCAL CODE.

AT STAIRS:
1/2" GYPSUM BOARD AT UNDERSIDE OF STAIRS AND WALLS IN CLOSET

LVL PLY TO PLY FASTENING SCHEDULE: (WHERE APPLICABLE BASED ON LVL USAGE)

- 1A - (2) PLY UP TO AND INCLUDING 11 7/8" TALL; FASTEN PLYS W/ (2) ROWS 16D NAILS AT 12" O.C.
- 2A - (2) PLY 14" TO AND 18" TALL (INCLUSIVE); FASTEN PLYS W/ (3) ROWS 16D NAILS AT 12" O.C.
- 3A - (2) PLY 20" TALL AND OVER; FASTEN PLYS W/ (4) ROWS 16D NAILS AT 12" O.C.
- 4A - (3) PLY UP TO AND INCLUDING 11 7/8" TALL; FASTEN PLYS W/ (2) ROWS 16D NAILS AT 12" O.C. FROM EACH SIDE
- 5A - (3) PLY 14" TO AND 18" TALL (INCLUSIVE); FASTEN PLYS W/ (3) ROWS 16D NAILS AT 12" O.C. FROM EACH SIDE
- 6A - (3) PLY 20" TALL AND OVER; FASTEN PLYS W/ (4) ROWS 16D NAILS AT 12" O.C. FROM EACH SIDE
- 7A - (4) PLY (ALL SIZES); FASTEN PLYS W/ (2) ROWS 1/2" DIAMETER A307 BOLTS AT 24" O.C. SEE SHOP DRAWING FOR ADDITIONAL INFORMATION.

FIELD INSTALLED FIRST FLOOR BEAM/HEADER SCHEDULE

IDENTIFIER	DESCRIPTION	LENGTH	OPTIONS	ENG. NUM.	REMARKS
B04-2	LVL - 11-14	11'-4 1/16"	SRM, SQK, SQL, ELA, ELK	1017	1A
B05-2	LVL - 11-14	11'-8 1/2"	SRM, SQK, SQL, ELA, ELK	1017	1A
B1	BEAM STEEL - W12X35	24'-2"		1021	
B2	BEAM STEEL - W12X26	20'-2 1/2"		1023	
B3	BEAM STEEL - W12X22	20'-2 1/2"	EVA	1025	
PF03-2	LVL - 11-04	20'-0"	GCF	1043	PORTAL FRAME, 1A

STEEL COLUMN SCHEDULE

IDENTIFIER	STYLE	HEIGHT	OPTIONS	ENG. NUM.	REMARKS
CO1	STANCHION - 4 IN DIA 116A ADJ	9'-0 1/8"	GCF, FBA	1023	
CO2	STANCHION - 3 IN DIA 116A ADJ	9'-0 1/8"	GCF, FBA, EVA	1025	

FIRST FLOOR JACK SCHEDULE

IDENTIFIER	DESCRIPTION	OPTIONS	ENG. NUM.	REMARKS
J01	JACK - (5) 2X4 SPF#1		1021	
J02	JACK - (5) 2X6 SPF#1		1021	
J03	JACK - (2) 2X4 SPF STUD GRADE		1019	
J04	JACK - (3) 2X4 SPF STUD GRADE		1017	
J05	JACK - (3) 2X4 SPF STUD GRADE		1017	
J06	JACK - (2) 2X4 SPF STUD GRADE		1051	
J07	JACK - (2) 2X4 SPF STUD GRADE		1051	
J10	JACK - (5) 2X4 SPF#1		1023	
J12	JACK - (4) 2X4 SPF STUD GRADE	EVA	1025	
J14	JACK - (2) 2X4 SPF STUD GRADE	GCB, GCF	1043	
J15	JACK - (2) 2X4 SPF STUD GRADE	GCB, GCF	1043	
J16	JACK - (2) 2X4 SPF STUD GRADE	GCF	1043	
J19	JACK - (2) 2X4 SPF STUD GRADE	GCF	1043	
J19	JACK - (2) 2X4 SPF STUD GRADE	GCF	1043	
J20	JACK - (2) 2X4 SPF STUD GRADE	GCF	1043	
J21	JACK - (3) 2X4 SPF STUD GRADE	SRM, SQK, SQL, ELA, ELB, ELK	1017	
J22	JACK - (3) 2X4 SPF STUD GRADE	SRM, SQK, SQL, ELA, ELB, ELK	1017	
B8	JACK - (2) 2X4 SPF STUD GRADE		1007	
B4	JACK - (2) 2X4 SPF STUD GRADE		1007	

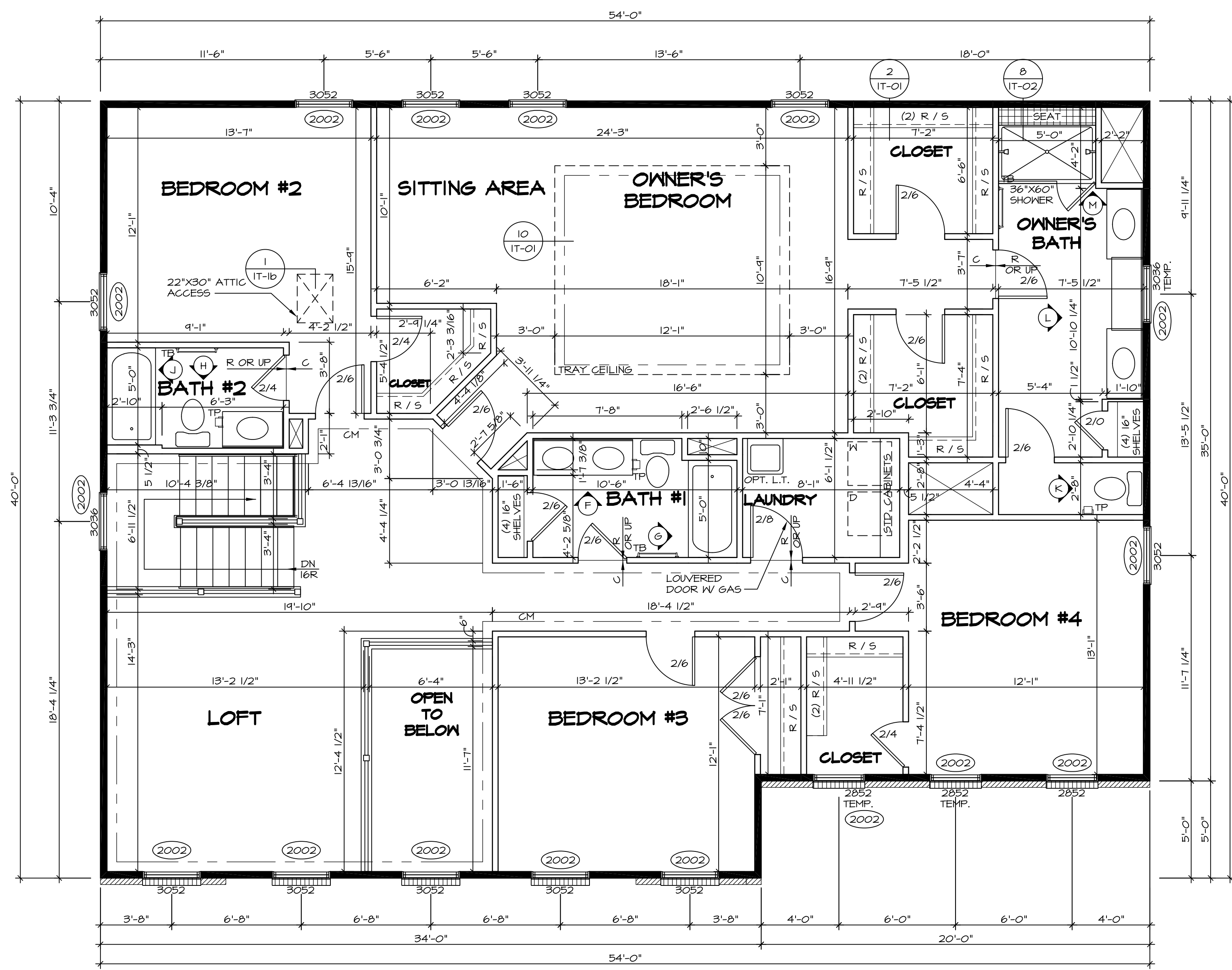
MODEL: **NORMANDY**
DRAWING TITLE: **FIRST FLOOR PLAN**
SHEET NO.: **A-7**
OPTION DESCRIPTION: **OPTION**

NVR, Inc., owner, expressly disavows any responsibility for the construction of the project. These plans are not to be reproduced, changed, or altered in any way without the written consent of NVR, Inc.



SET NO. NRM00
VERSION 01
DRAWN BY: SGA
DATE: 6/29/15
OPTION

REVISIONS:
REV. NO. DATE DESCRIPTION
1 08/01/16 N.E. - DRAWING ALIGNMENT
2 11/05/16 TH - STANDARD DETAILS 3.0



LEGEND

- BEARING WALL
- NON BEARING WALL
- INDICATES BEARING FROM POINT-LOAD ABOVE
- JACKS
- BEAM/HEADER
- PAD FOOTING
- STEEL COLUMN
- PORTAL FRAME
- JOIST/TRUSS
- LVL
- ENGINEERING PAGE NUMBER

SEE FC DETAILS FOR FRAMING CONNECTORS

- FLOOR PLAN NOTES**
- ALL HEADERS ARE (2) 2x6 w/ 2x4 WALLS OR (3) 2x6 w/ 2x6 WALLS, UNLESS OTHERWISE NOTED.
 - ALL HEADERS TO HAVE (1) 2x4 OR 2x6 JACK EACH END, UNLESS OTHERWISE NOTED.
 - ALL EXTERIOR WALLS TO BE 4" AND ALL INTERIOR WALLS TO BE 3 1/2", UNLESS OTHERWISE NOTED.
 - HATCHED AREAS INDICATE DROPPED CEILINGS. ALL DROPPED CEILINGS ARE 12" UNLESS OTHERWISE NOTED.
 - SEE "BRACED WALL PANEL DETAIL SHEET" FOR SPECIAL WALL FRAMING LOCATIONS AND HEADER SIZES, IF APPLICABLE.
 - SEE STANDARD DETAIL CATEGORY "11" SHEET(S) FOR INTERIOR TRIM DETAILS.
 - SEE ARCHITECTURAL DETAIL SHEET "AD" FOR HOUSE SPECIFIC INTERIOR TRIM OPTION TABLE.
 - ALL WINDOWS HAVE T-O 1/2" HEADER HEIGHT UNLESS OTHERWISE NOTED.

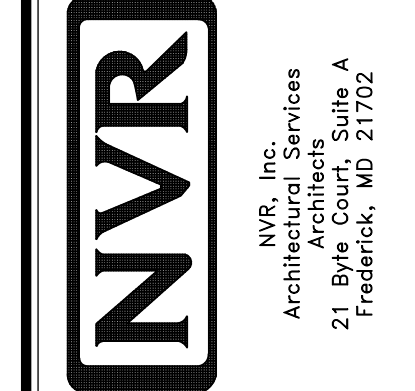
SECOND FLOOR JACK SCHEDULE

IDENTIFIER	DESCRIPTION	OPTIONS	ENG. N.M.	REMARKS

REMARKS

REV. NO.	DATE	DESCRIPTION
1	08/07/16	N - DRAWING ALIGNMENT
2	11/05/16	TH - STANDARD DETAILS 3.0

NVR, Inc., owner, expressly reserves its copyright in these plans. These plans are not to be reproduced, changed, copied, or otherwise used in any way without the written consent of NVR, Inc.

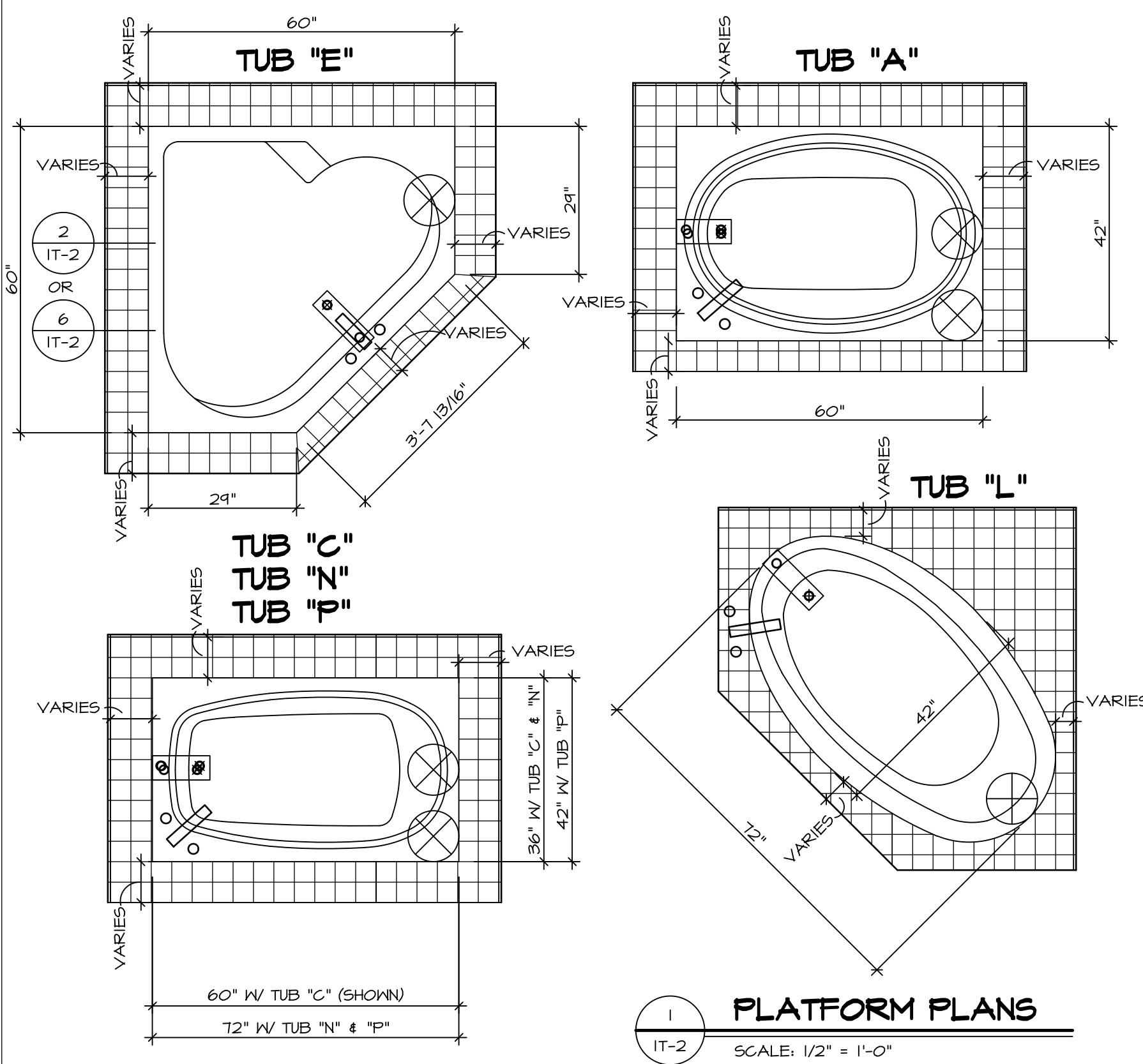


SET NO. NRM00	VERSION 01
DRAWN BY SGA	DATE: 6/29/15
OPTION	

MODEL	NORMANDY
DRAWING TITLE	SECOND FLOOR PLAN
OPTION DESCRIPTION	

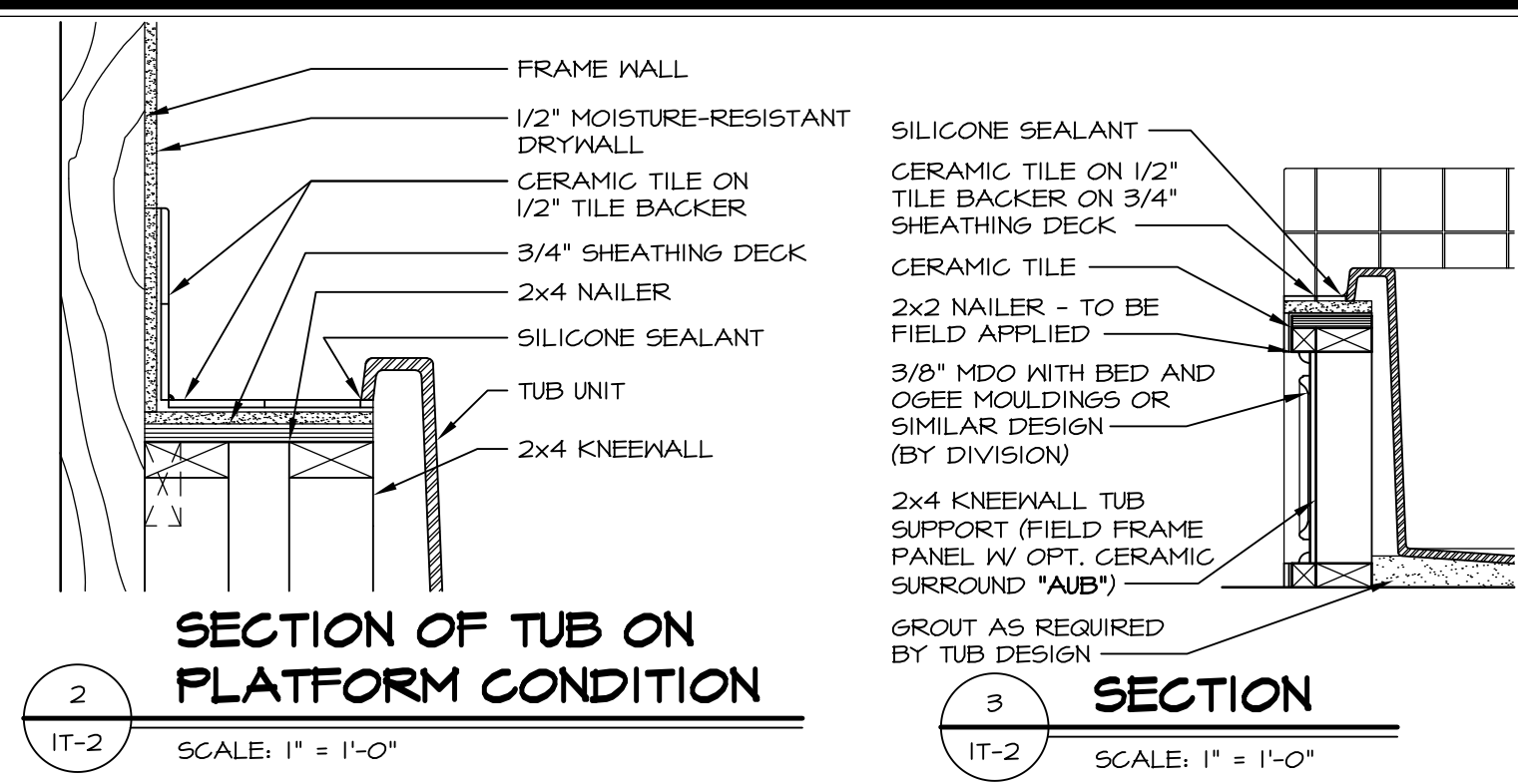
SHEET NO. A-8

SECOND FLOOR PLAN
SCALE: 1/4" = 1'-0"

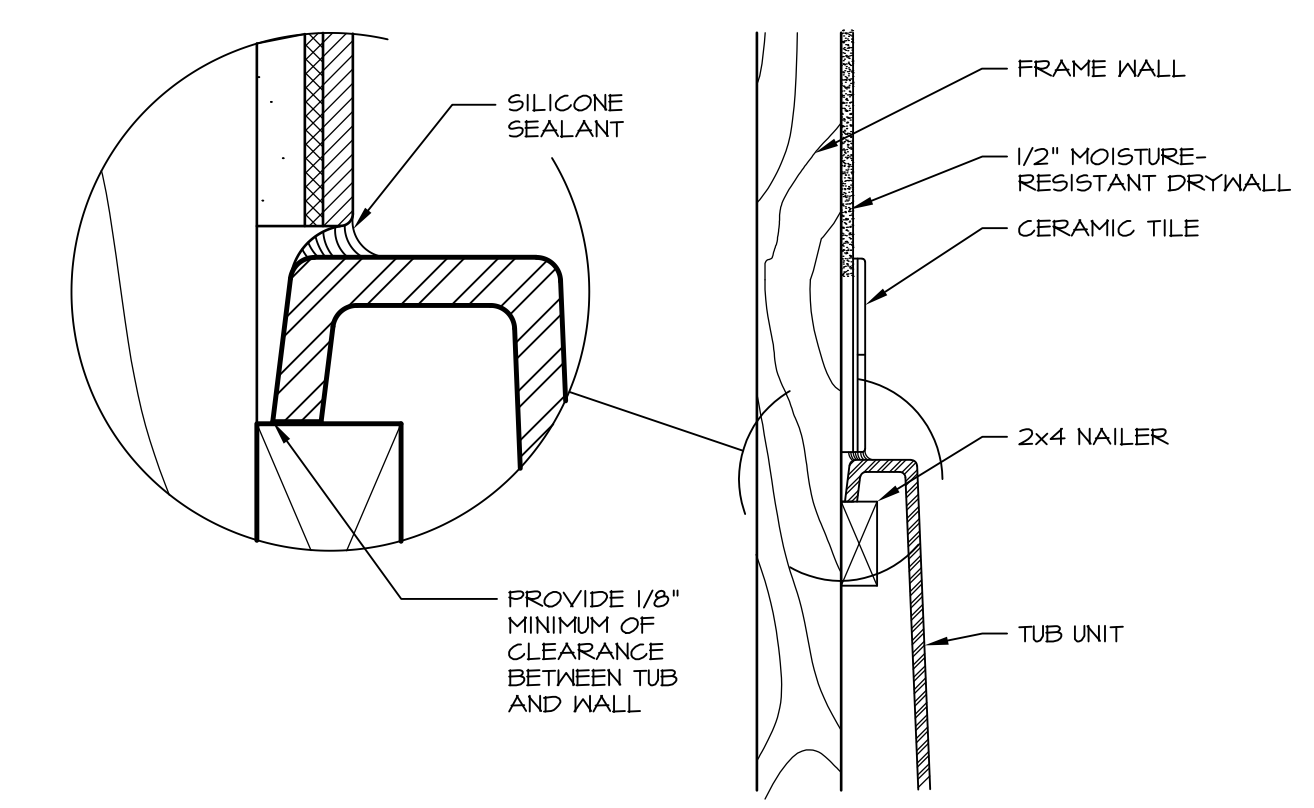


1 PLATFORM PLANS
SCALE: 1/2" = 1'-0"

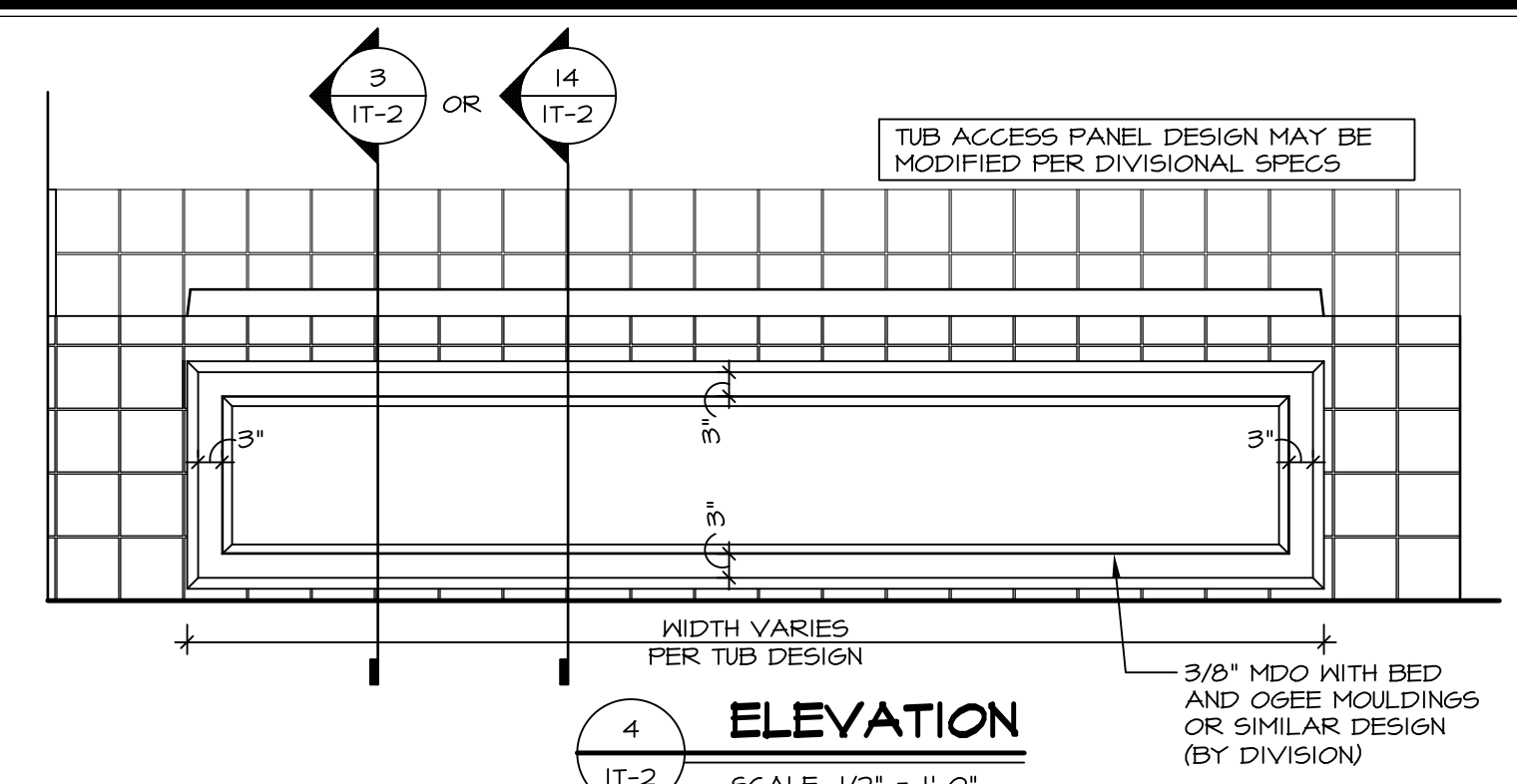
TUB	MANUF.	HEIGHT	WIDTH	LENGTH	TUB DECK PANEL HEIGHT
"A"	KOHLER/ STERLING	18 3/4"	42"	60"	17 1/8"
"C"	KOHLER/ STERLING	18 3/4"	36"	60"	17 1/8"
"E"	KOHLER/ STERLING	19 1/2"	60"	60"	17 7/8"
"L"	KOHLER/ STERLING	18 1/2"	42"	72"	16 7/8"
"N"	KOHLER/ STERLING	18 3/4"	36"	72"	17 1/8"
"P"	KOHLER/ STERLING	18 3/4"	42"	72"	17 1/8"



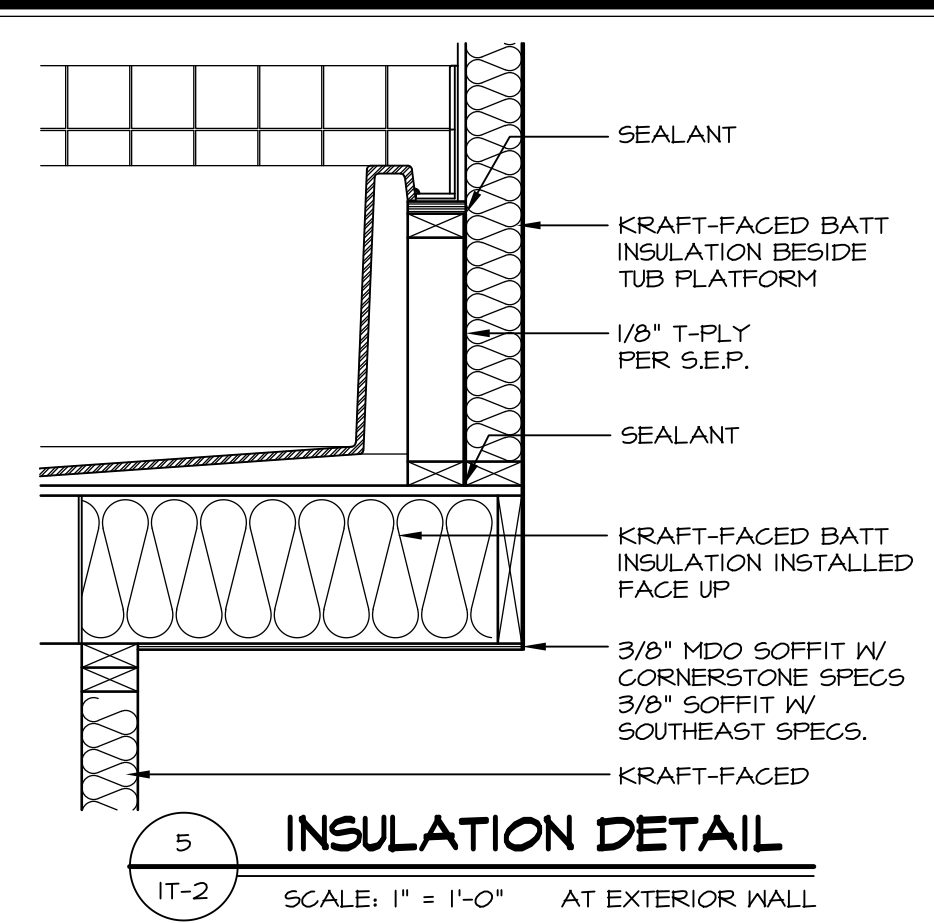
2 SECTION OF TUB ON PLATFORM CONDITION
SCALE: 1" = 1'-0"



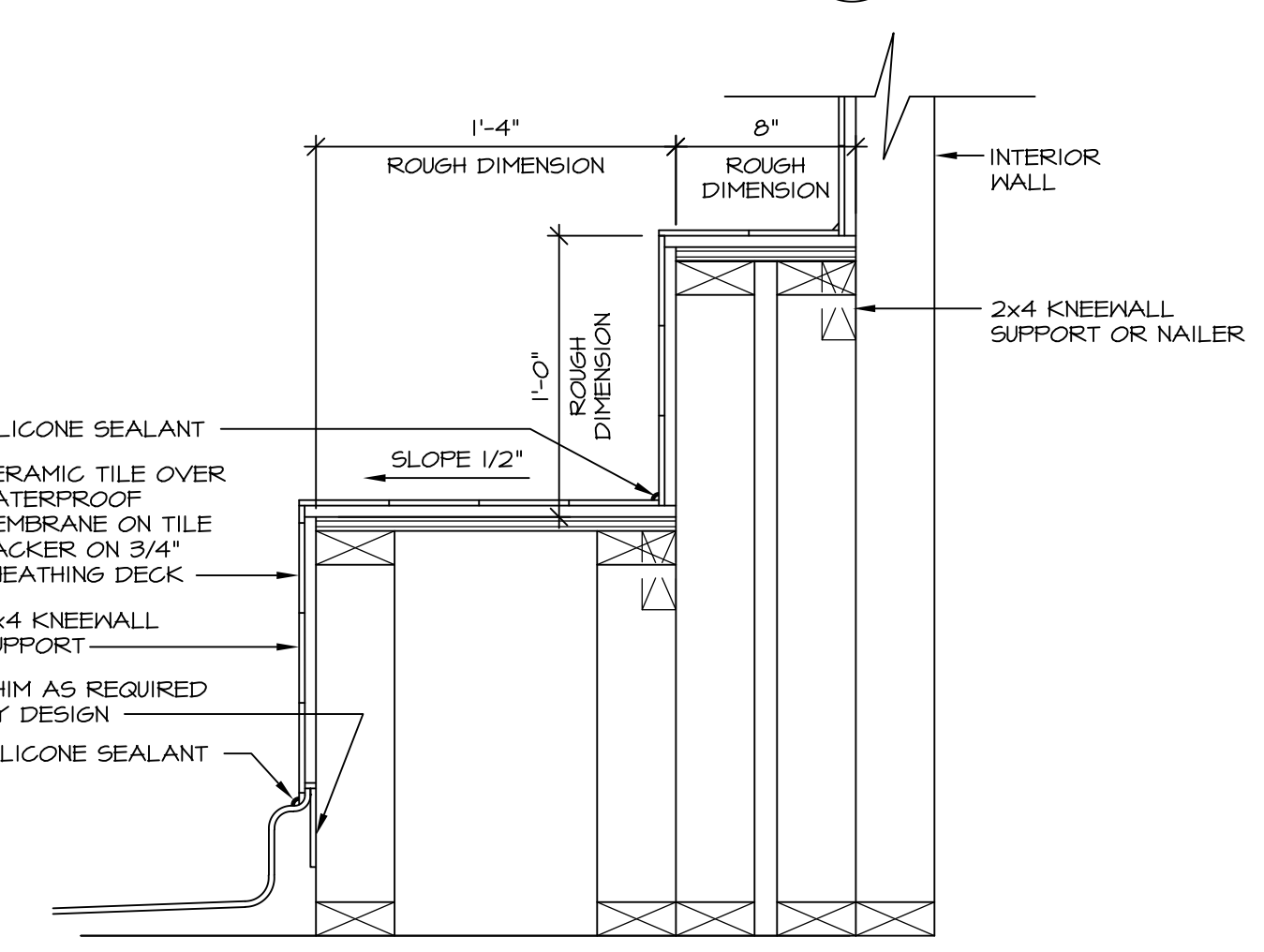
3 SECTION OF TUB TO WALL CONDITION
SCALE: 1 1/2" = 1'-0"



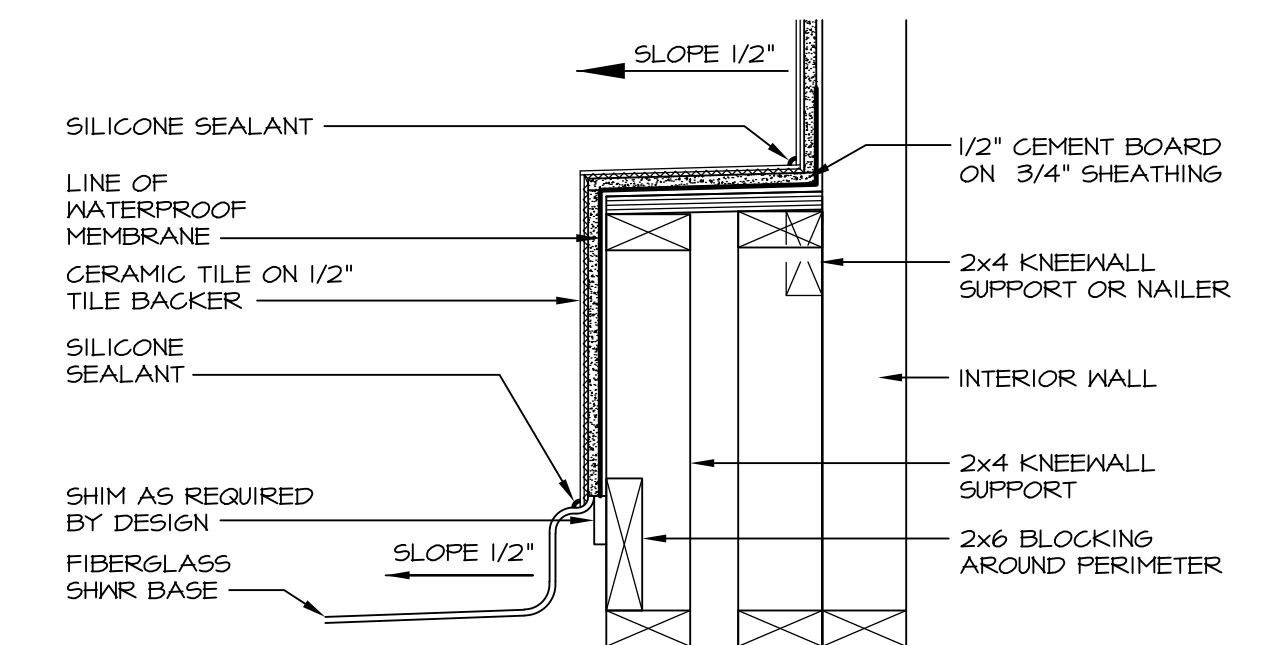
4 ELEVATION
SCALE: 1/2" = 1'-0"



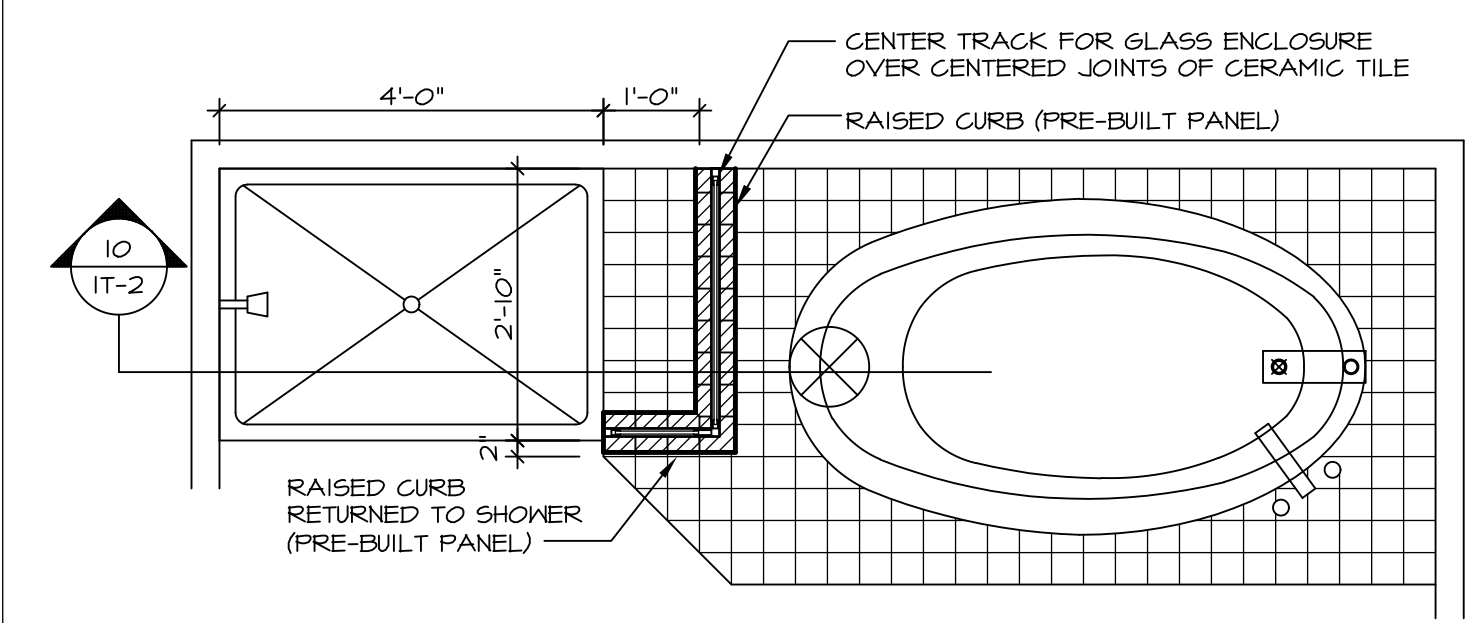
5 INSULATION DETAIL
SCALE: 1" = 1'-0" AT EXTERIOR WALL



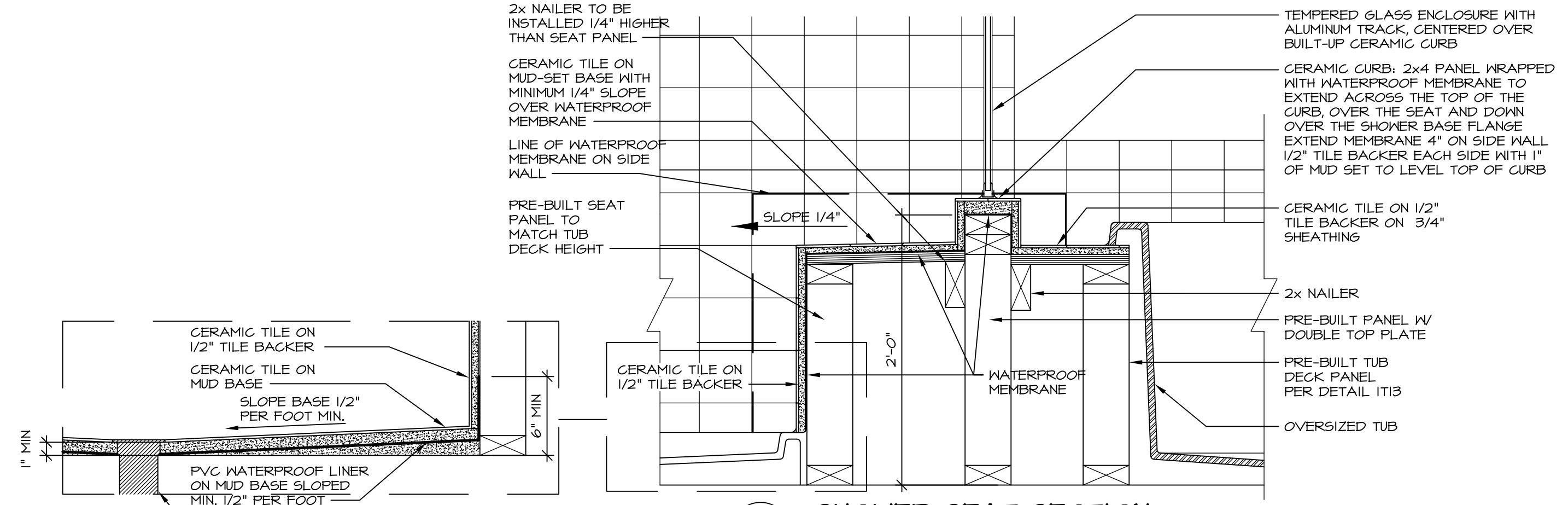
6 SECTION OF SHOWER SEAT AND SHELF
SCALE: 1 1/2" = 1'-0"



7 SECTION OF SHOWER SEAT
SCALE: 1-1/2" = 1'-0" FIBERGLASS SHOWER BASE



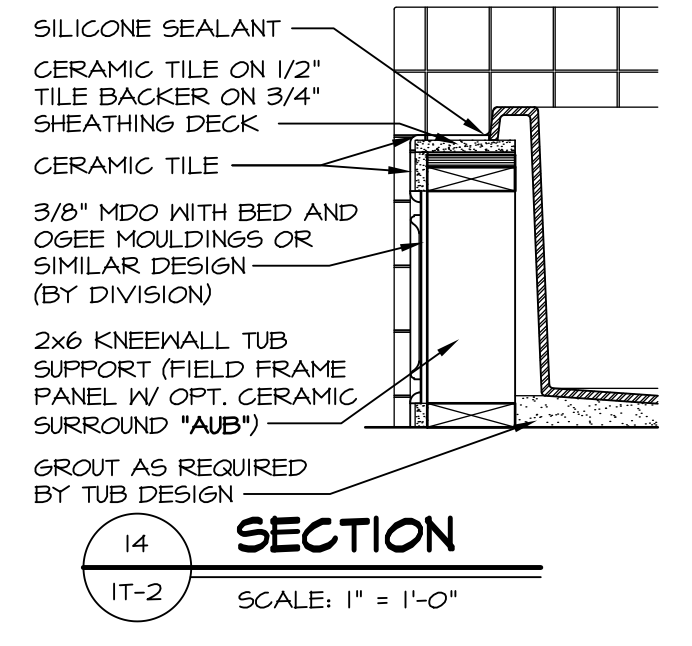
8 SHOWER SEAT PLAN / DETAIL
SCALE: 1/2" = 1'-0"



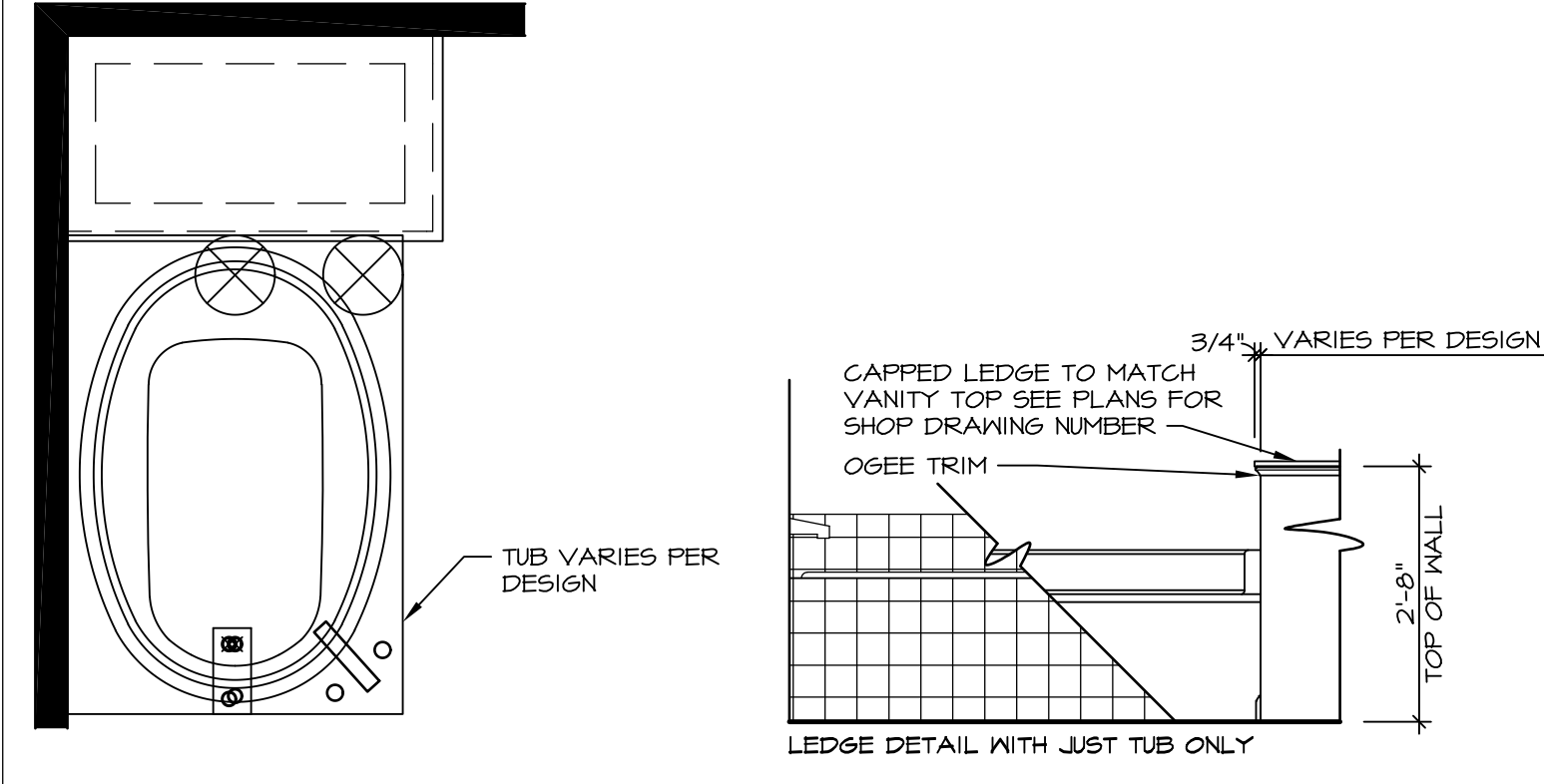
9 SHOWER SEAT SECTION
SCALE: 1-1/2" = 1'-0"



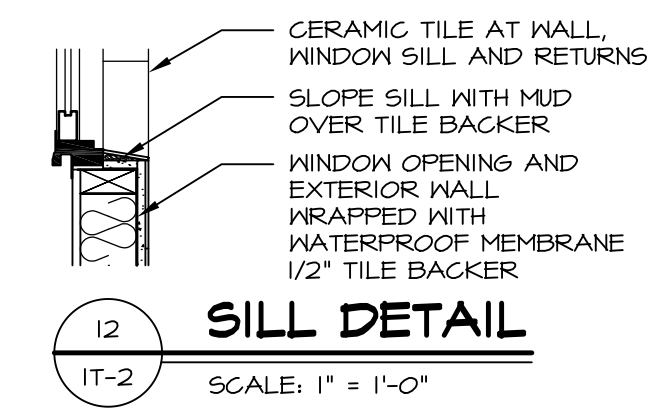
10 ALTERNATE SHOWER PAN DETAIL



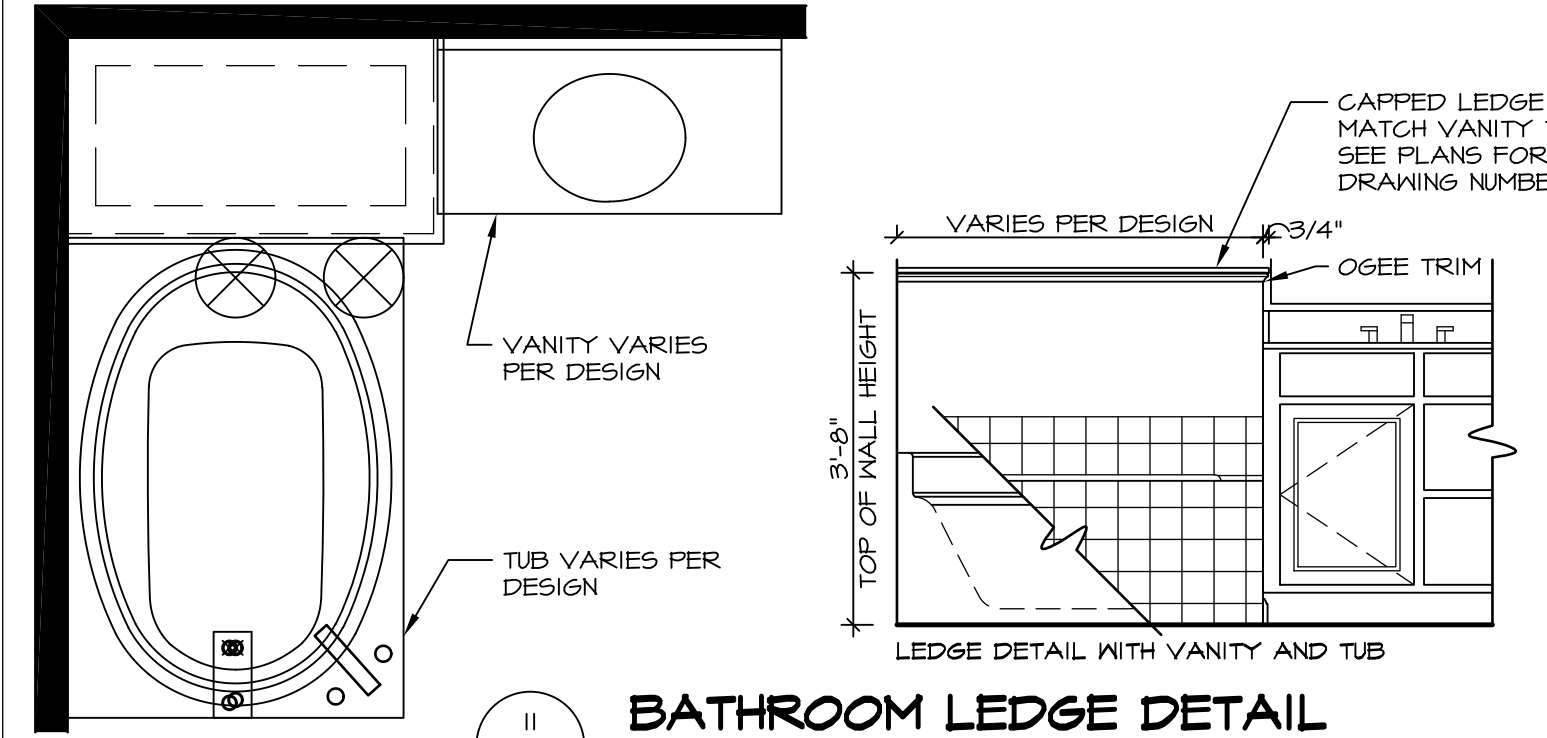
11 SECTION
SCALE: 1" = 1'-0"



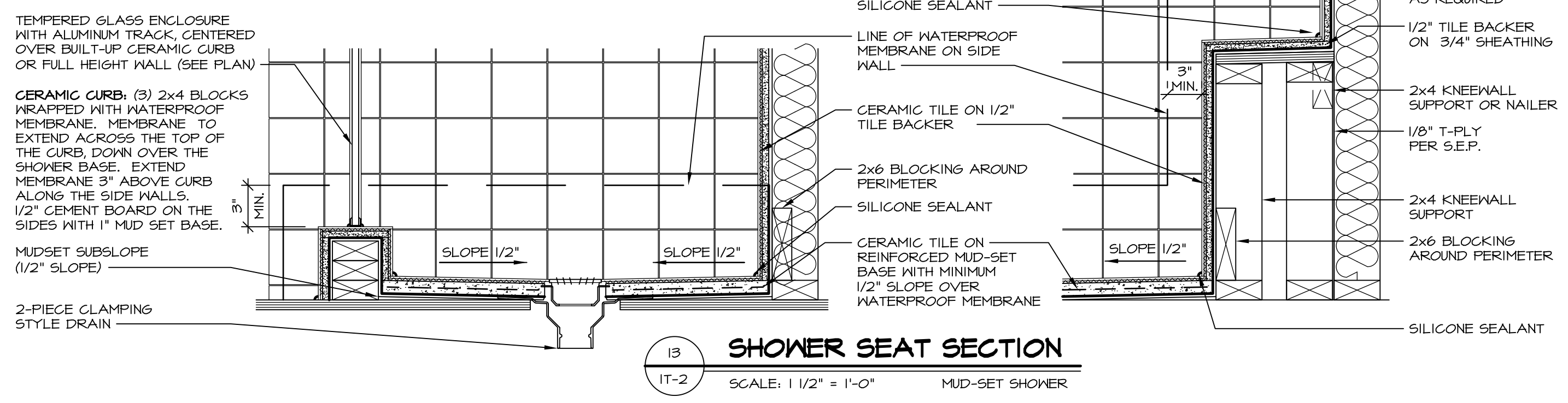
12 BATHROOM LEDGE DETAIL
SCALE: 1/2" = 1'-0"



13 SILL DETAIL
SCALE: 1" = 1'-0"



14 BATHROOM LEDGE DETAIL
SCALE: 1/2" = 1'-0"



15 SHOWER SEAT SECTION
SCALE: 1 1/2" = 1'-0" MUD-SET SHOWER

REVISIONS

REV. NO.	DATE	DESCRIPTION
1	5/11/17	ISSUE FOR PERMIT
2		
3		
4		
5		
6		
7		
8		
9		
10		
11		
12		
13		
14		
15		

NVR, Inc., owner, expressly reserves its common law copyright and other property rights in these plans. These plans are not to be reproduced, stored in a retrieval system, or transmitted in any form or by any means, electronic, mechanical, photocopying, recording, or by any information storage and retrieval system, without first obtaining the expressed written consent of NVR, Inc.

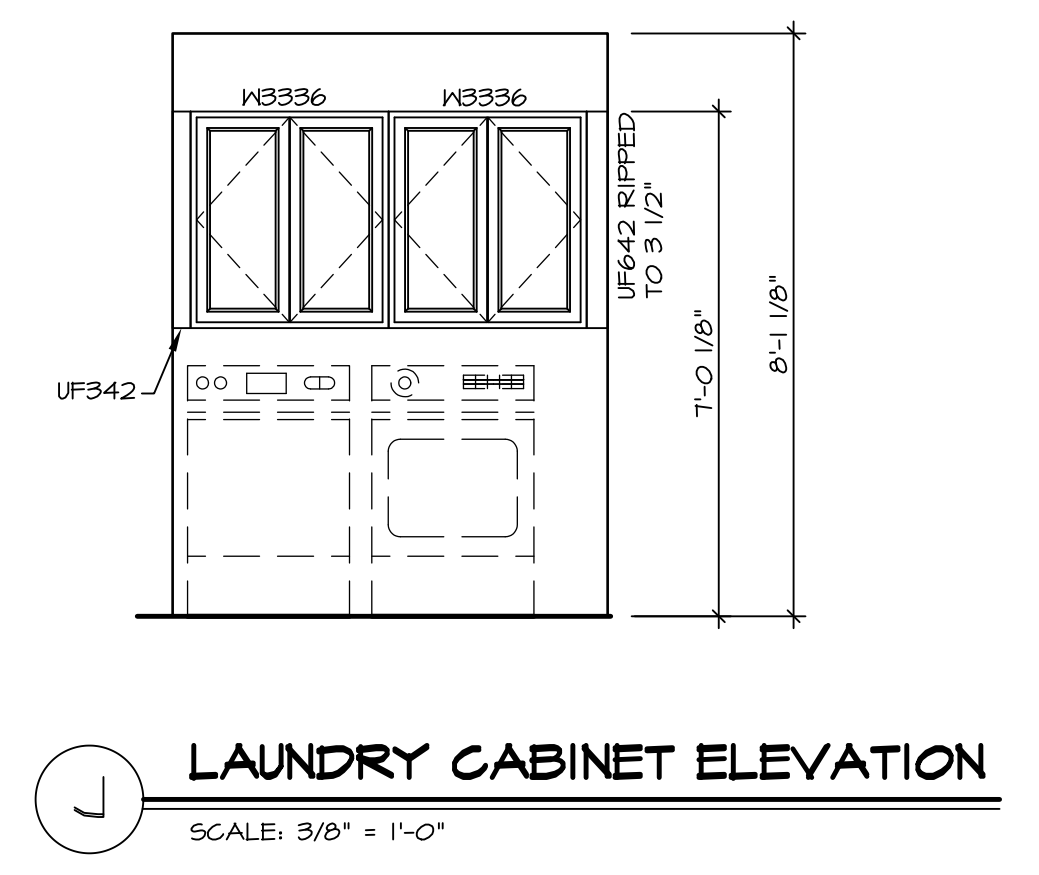
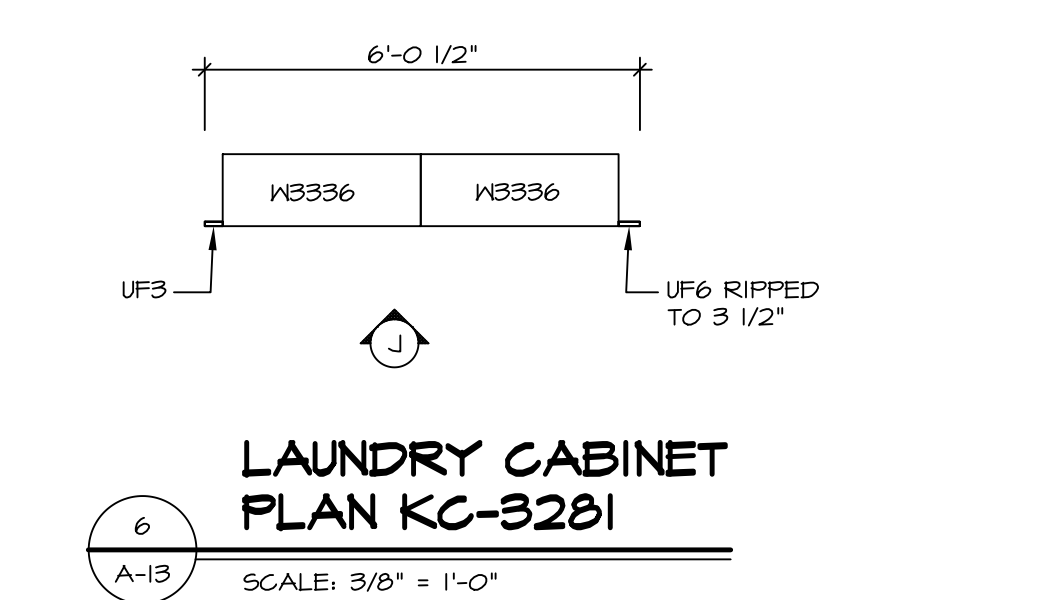
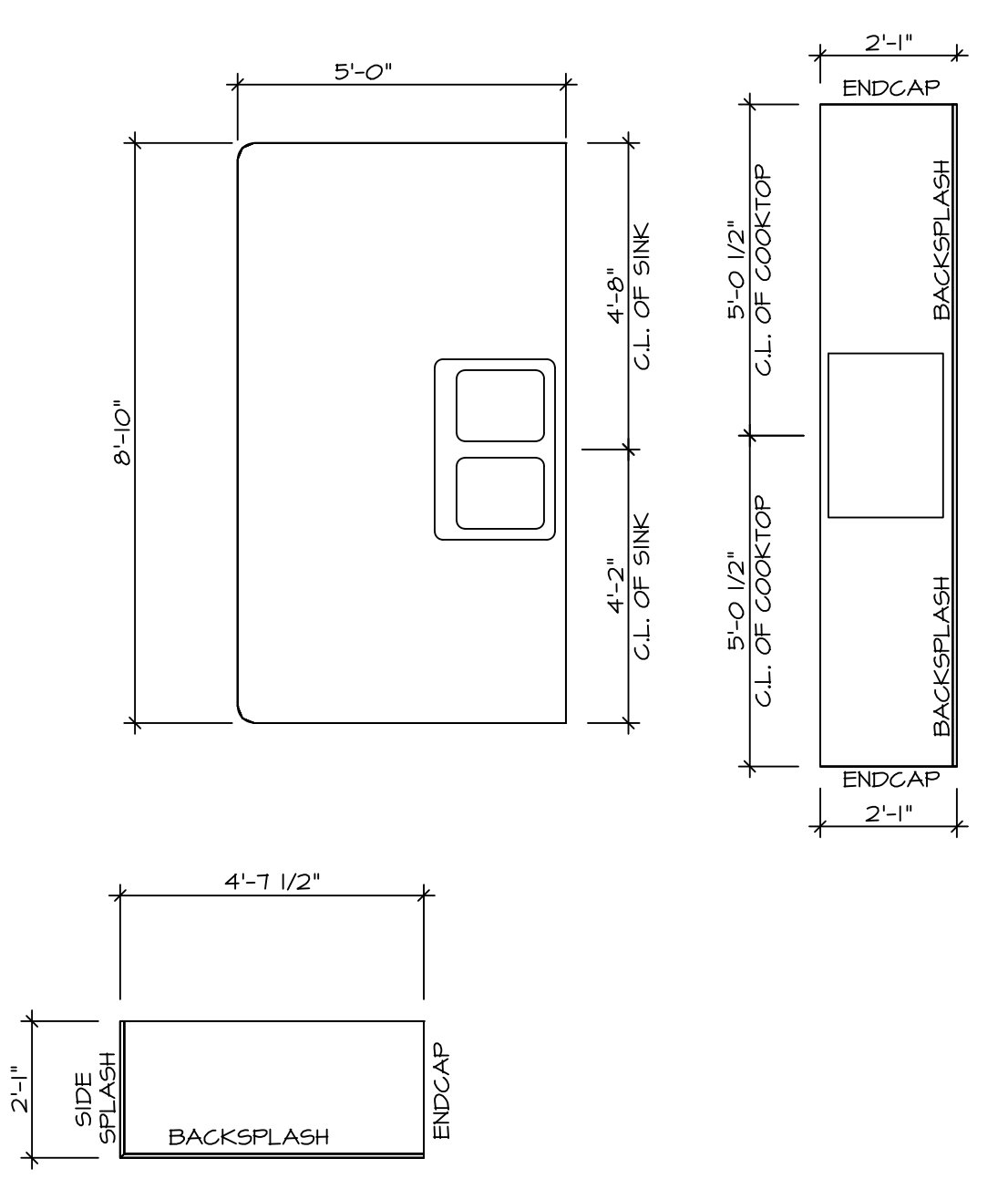
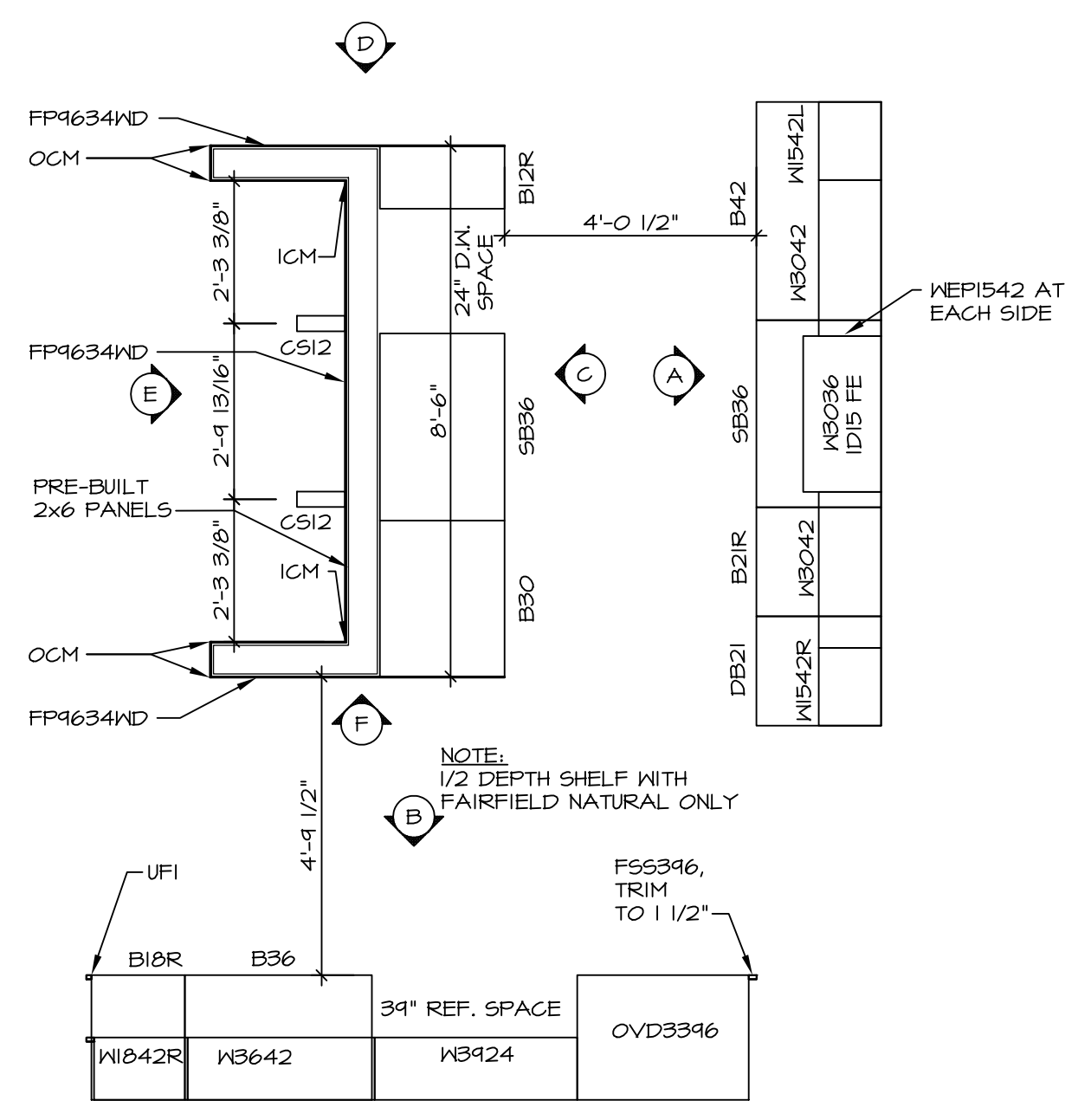
NVR
NVR, Inc.
Architectural Services
5285 Westpark Drive, Suite 100
Frederick, MD 21703

SET NO. NVR
VERSION
DRAWN BY
DATE
OPTION

MODEL
STANDARD DETAILS
DRAWING TITLE
INTERIOR TRIM DETAILS
BATH DETAILS
OPTION DESCRIPTION

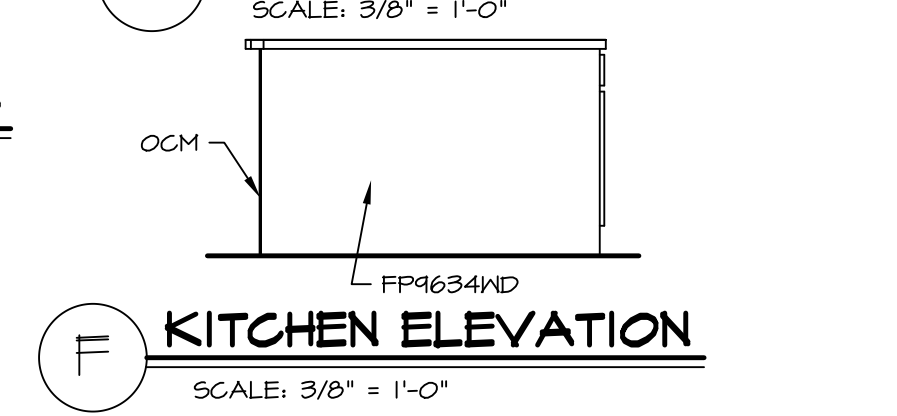
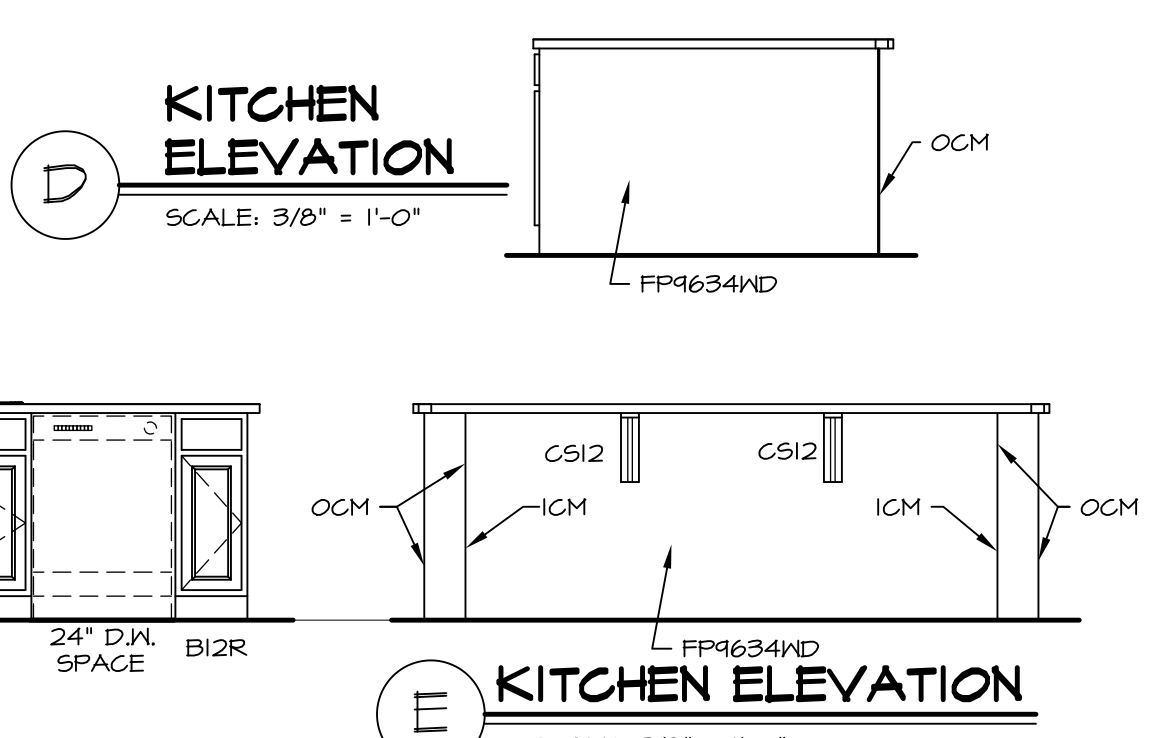
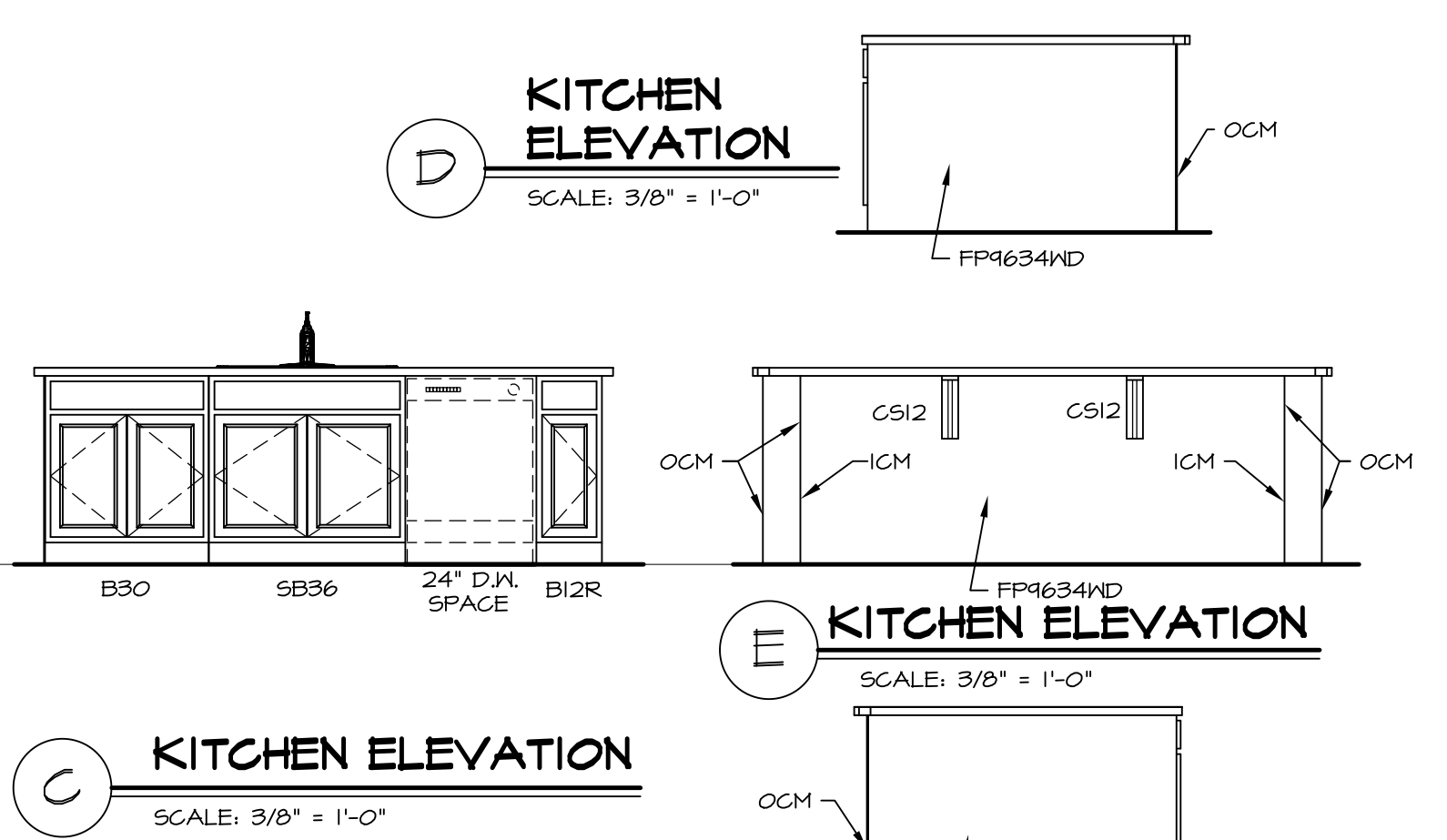
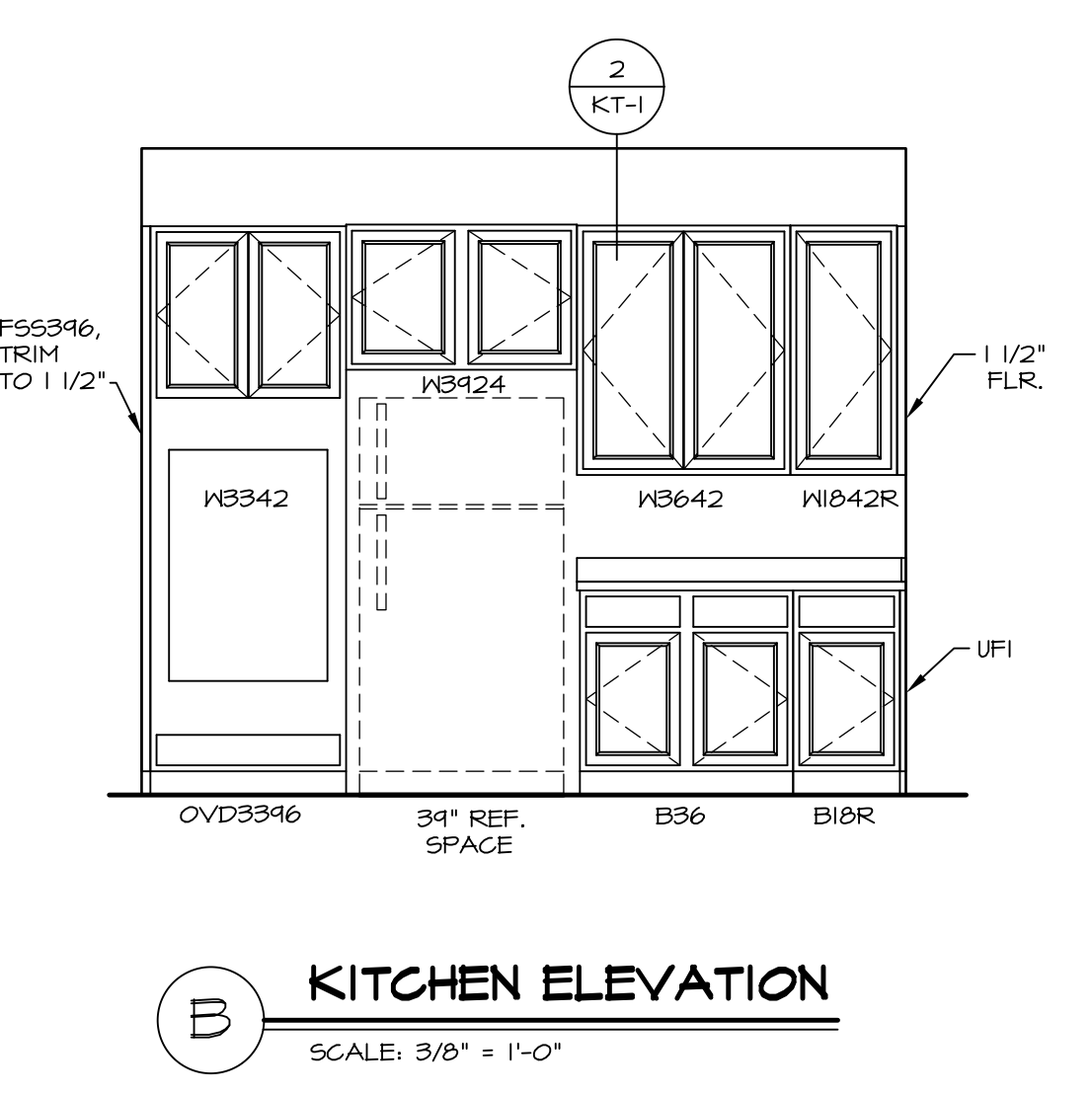
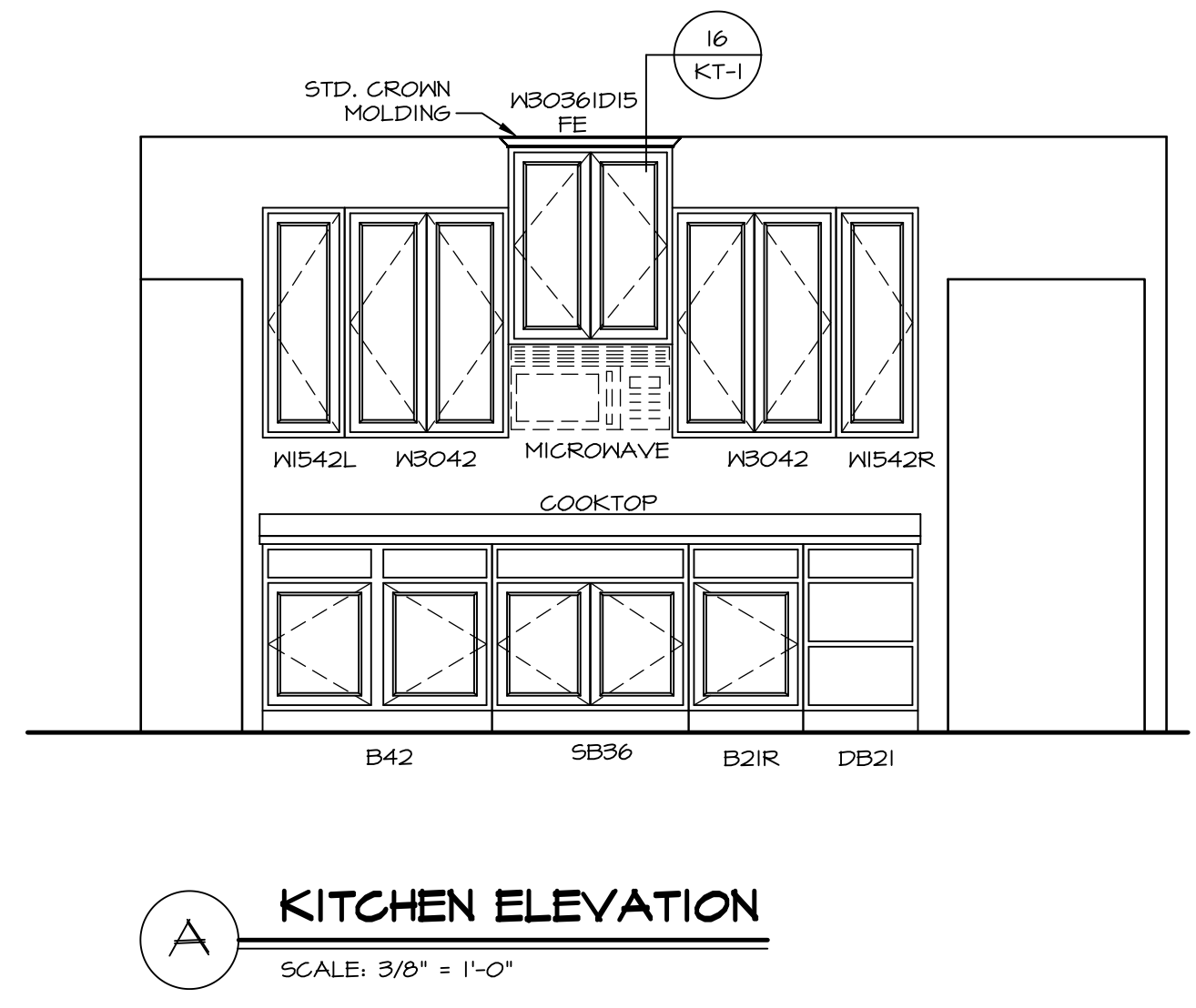
SHEET NO.
IT-2

C:\Users\epeterson\AppData\Local\Temp\XpPublish_4544\IT2.dwg 05/17/17 - 7:12 am



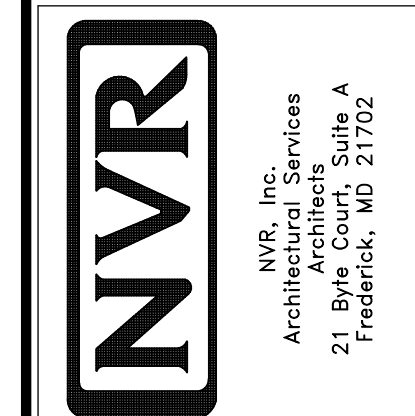
1
A-13
SCALE: 3/8" = 1'-0"

2
A-13
SCALE: 3/8" = 1'-0"

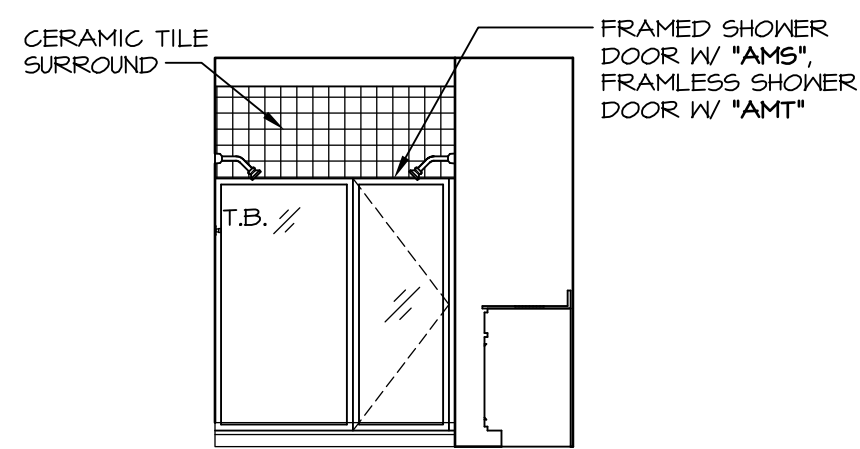


REV. NO.	DATE	REMARKS
1	11/15/16	TRV - STANDARD DETAILS 3.0

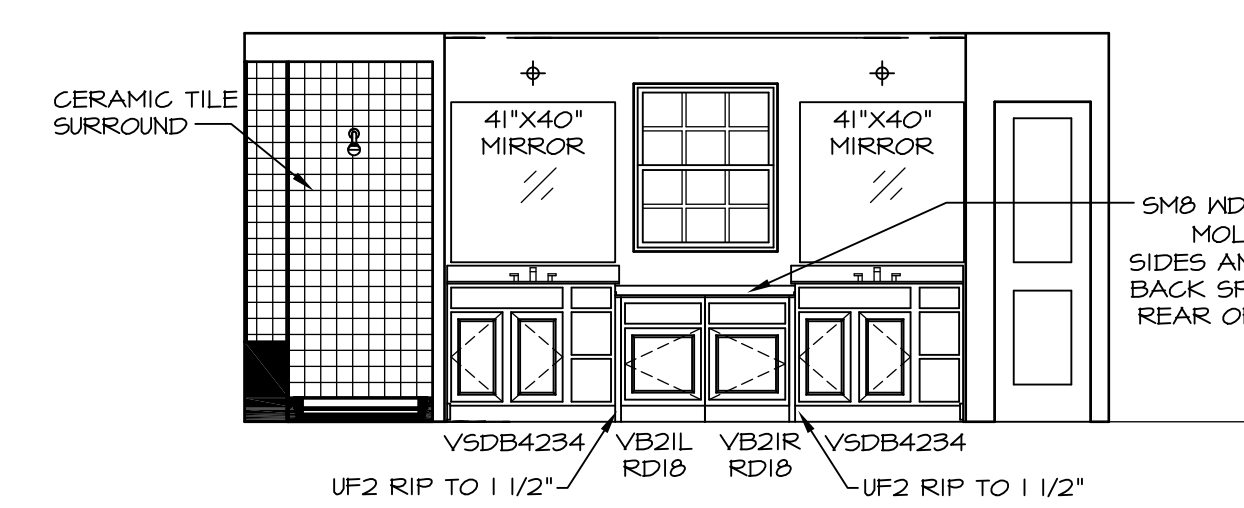
NVR, Inc., owner, expressly reserves its common law copyright in these plans. These plans are not to be reproduced, changed, adapted in any way, or otherwise used without the prior written consent of NVR, Inc.



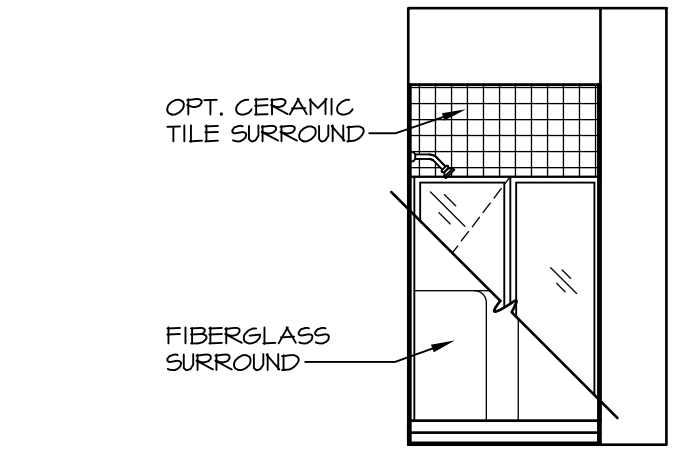
MODEL	NORMANDY
SHEET NO.	A-13
SET NO.	NRM00
VERSION	01
DRAWN BY	RJC
DATE	6/29/15
OPTION	
DRAWING TITLE	KITCHEN LAYOUT
OPTION DESCRIPTION	
	46



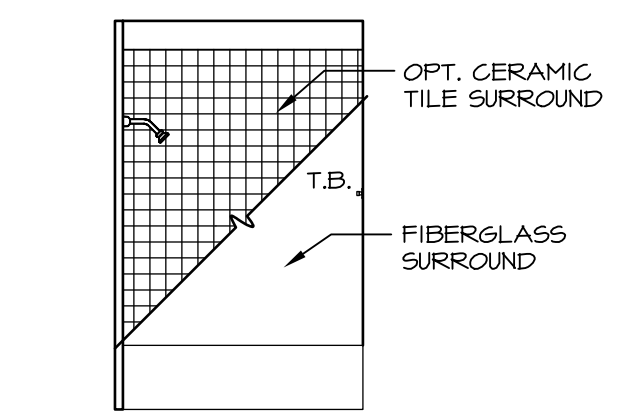
M OWNER'S BATH - "AMG"
SCALE: 1/4" = 1'-0"



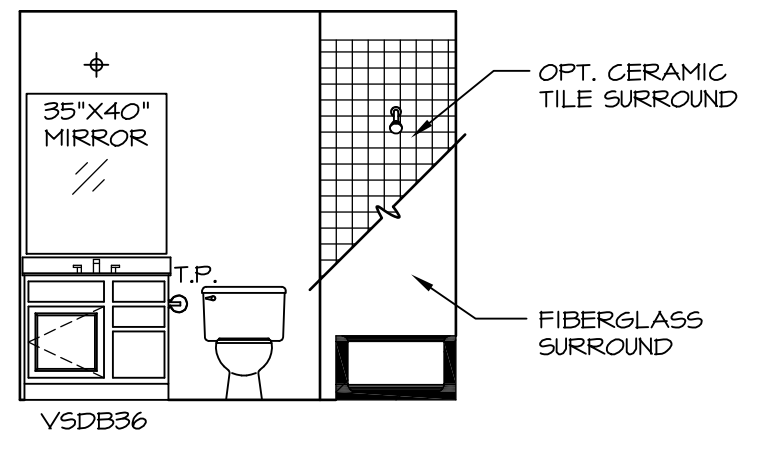
L OWNER'S BATH - "AMG"
SCALE: 1/4" = 1'-0"



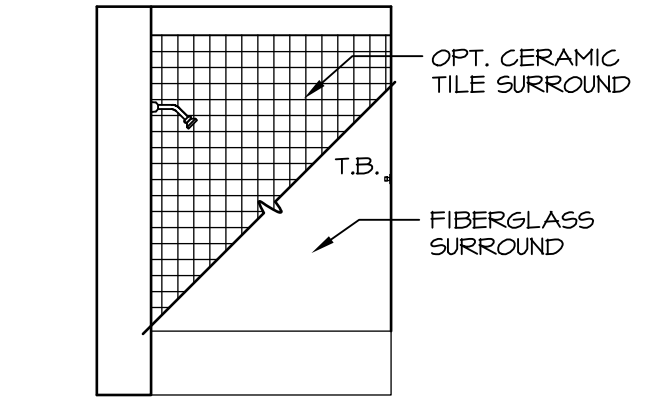
E FIRST FLOOR BATH - "BAR"
SCALE: 1/4" = 1'-0"



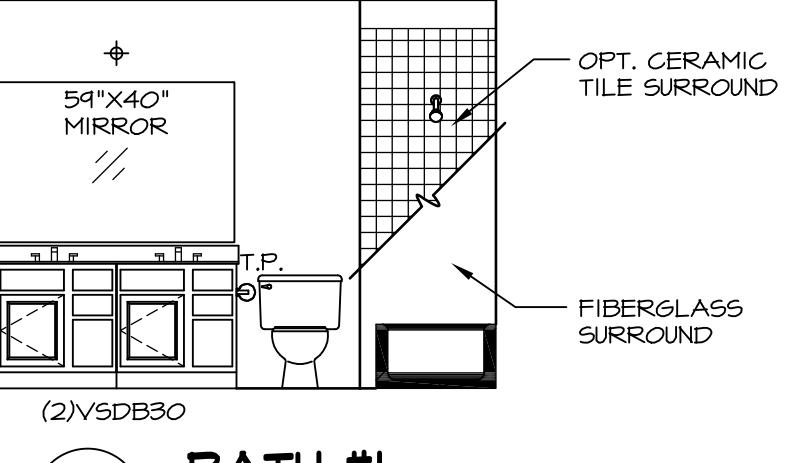
J BATH #2
SCALE: 1/4" = 1'-0"



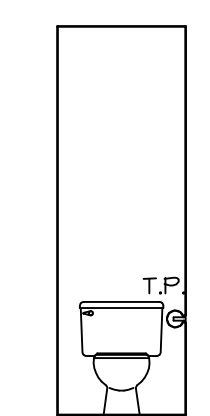
H BATH #2
SCALE: 1/4" = 1'-0"



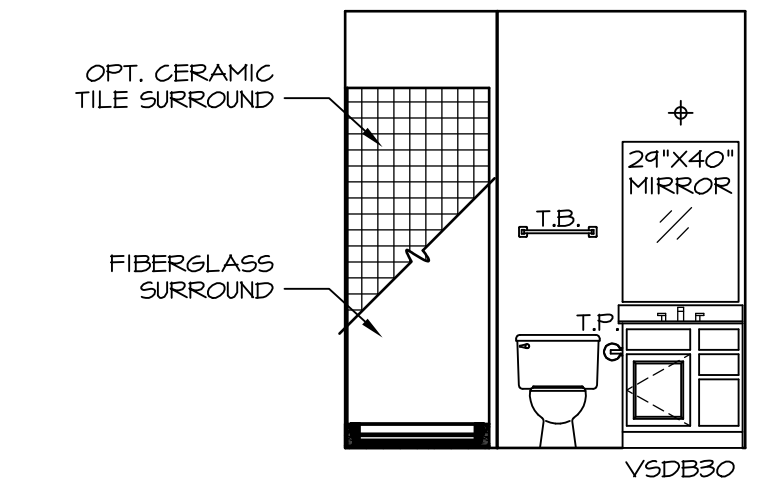
G BATH #1
SCALE: 1/4" = 1'-0"



F BATH #1
SCALE: 1/4" = 1'-0"



K OWNER'S BATH - "AMA" OR "AMG"
SCALE: 1/4" = 1'-0"



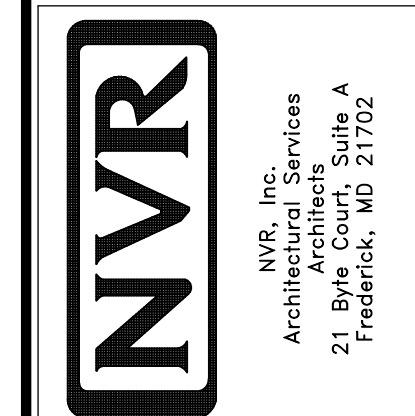
D FIRST FLOOR BATH - "BAR"
SCALE: 1/4" = 1'-0"

NOTES:

1. TEMPERED GLASS SHOWER ENCLOSURE WITH SWING DOOR OR OPTIONAL SLIDING DOOR BY DIVISION
2. TUB ACCESS PANELS PROVIDED AS NEEDED, ALL MATERIALS BY DIVISION
3. REFER TO SHEET (IT-2) FOR TUB AND SHOWER DETAILS.
4. ALL V5DB24-42 DRAWERS TO BE SET ON RIGHT HAND.
5. BATH ELEVATIONS ARE SHOWN PER PLAN.

REV. NO.	DATE	REMARKS
1	08/07/16	N. - DRAWING ALIGNMENT
2	11/15/16	TRV. - STANDARD DETAILS 5.0

NVR, Inc., owner, expressly reserves its copyright in these plans. These plans are not to be reproduced, changed, copied in any way, or used for any purpose not intended by NVR, Inc. without the written consent of NVR, Inc.



SET NO. NRM00	VERSION 01
DRAWN BY SGA	DATE: 5/29/15
OPTION	OPTION

MODEL NORMANDY	DRAWING TITLE BATH ELEVATIONS
SHEET NO. A-14	OPTION DESCRIPTION
48	