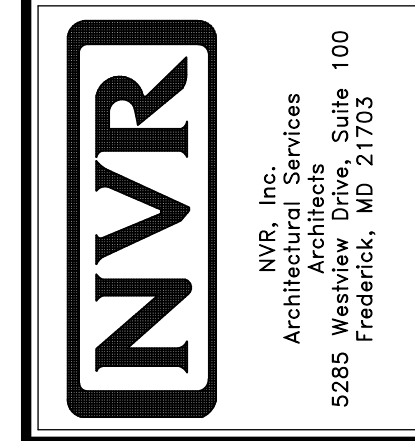


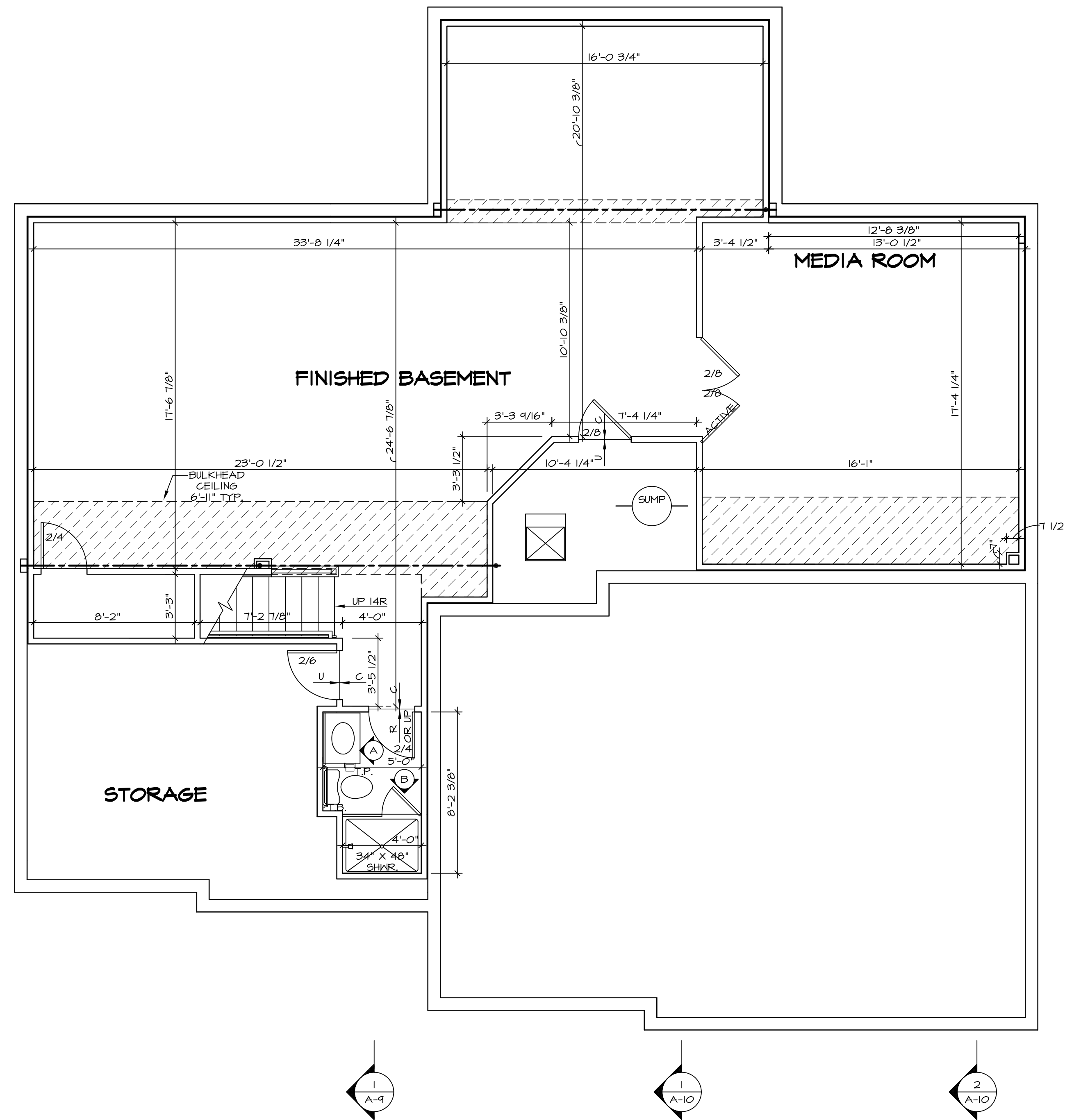
**PLUMBING PLAN**  
SCALE: 1/4" = 1'-0"

SHEET NO. <b>A-5</b>	MODEL <b>LONDON</b>	SET NO. LDN00
<b>33</b>	DRAWING TITLE PLUMBING PLAN	VERSION 02
	OPTION DESCRIPTION	DRAWN BY PTH
		DATE 8/13/15
		OPTION



NVR, Inc., owner, expressly reserves its copyright in these plans. These plans are not to be reproduced, changed, copied, or otherwise used in any way without the written consent of NVR, Inc.

REV. NO.	DATE	REMARKS



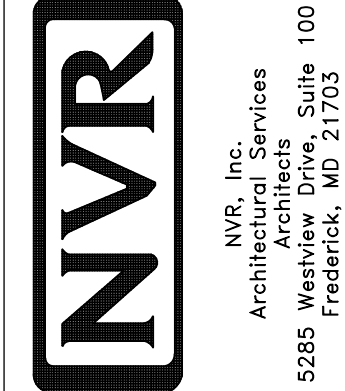
**BASEMENT FLOOR PLAN**  
SCALE: 1/4" = 1'-0"

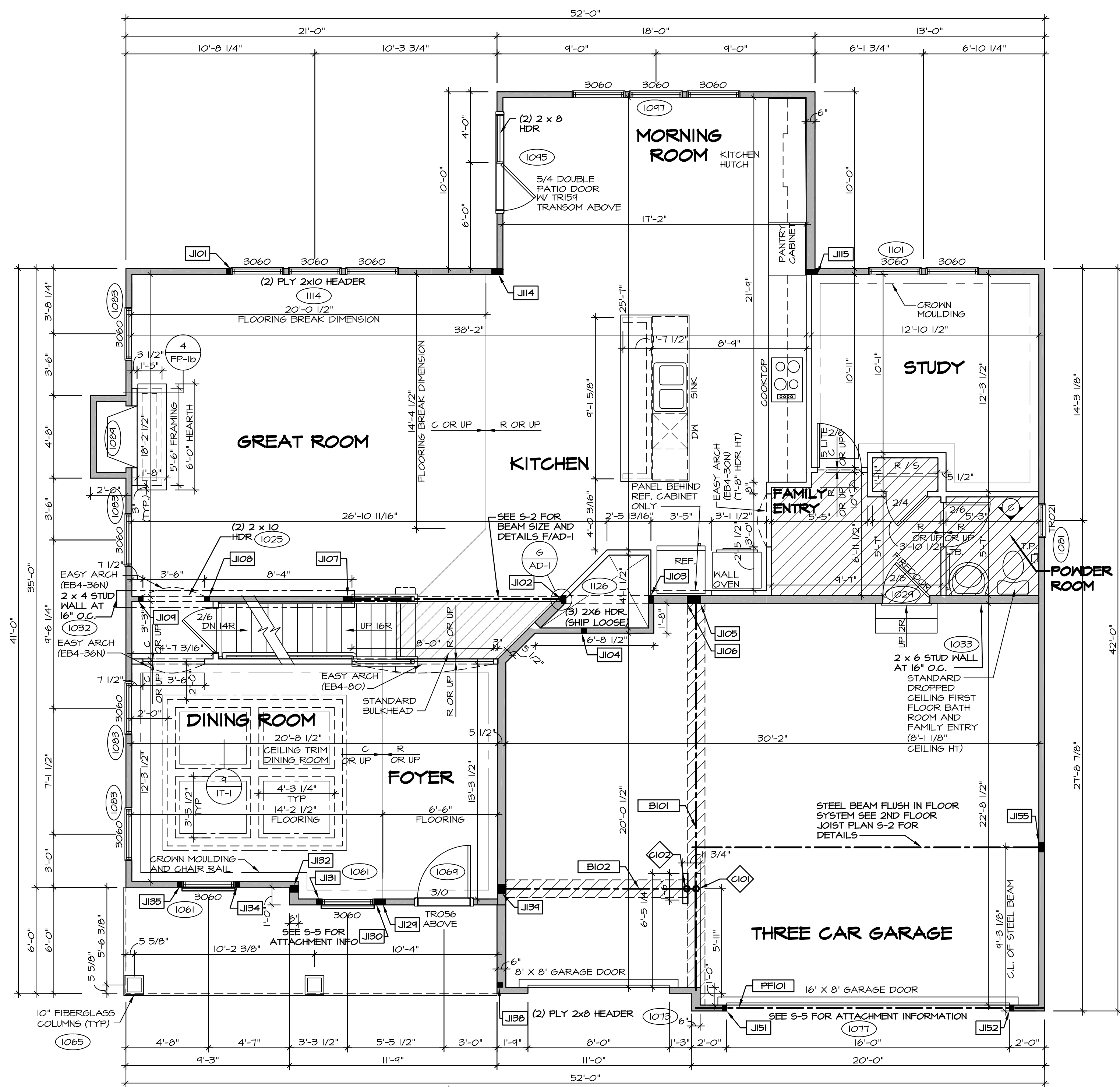
LEGEND	
	BEARING WALL
	NON BEARING WALL
	INDICATES BEARING FROM POINT-LOAD ABOVE
	JACKS
	BEAM/HEADER
	PAD FOOTING
	STEEL COLUMN
	PORTAL FRAME
	JOIST/TRUSS
	LVL
	ENGINEERING PAGE NUMBER
SEE FC DETAILS FOR FRAMING CONNECTORS	

- FLOOR PLAN NOTES**
- ALL HEADERS ARE (2) 2x6 w/ 2x4 WALLS OR (3) 2x6 w/ 2x6 WALLS, UNLESS OTHERWISE NOTED.
  - ALL HEADERS TO HAVE (1) 2x4 OR 2x6 JACK EACH END, UNLESS OTHERWISE NOTED.
  - ALL EXTERIOR WALLS TO BE 4" AND ALL INTERIOR WALLS TO BE 3 1/2", UNLESS OTHERWISE NOTED.
  - HATCHED AREAS INDICATE DROPPED CEILINGS. ALL DROPPED CEILINGS ARE 12" UNLESS OTHERWISE NOTED.
  - SEE "BRACED WALL PANEL DETAIL SHEET" FOR SPECIAL WALL FRAMING LOCATIONS AND HEADER SIZES, IF APPLICABLE.
  - SEE STANDARD DETAIL CATEGORY "IT" SHEET(S) FOR INTERIOR TRIM DETAILS.
  - SEE ARCHITECTURAL DETAIL SHEET "AD" FOR HOUSE SPECIFIC INTERIOR TRIM OPTION TABLE.
  - ALL WINDOWS HAVE 1'-0 1/2" HEADER HEIGHT UNLESS OTHERWISE NOTED.

- GYPSUM NOTES**
- AT GARAGE:  
GYPSUM BOARD AT COMMON WALLS, CEILINGS, BEAM WRAPS AND SUPPORTS PER STANDARD DETAIL FA-1(b) FIRE ASSEMBLIES OR AS REQUIRED BY LOCAL CODE.
- AT STAIRS:  
1/2" GYPSUM BOARD AT UNDERSIDE OF STAIRS AND WALLS IN CLOSET
- BASEMENT WITH I-JOIST FLOOR SYSTEM ABOVE:  
WITH OPTION "SGI" - DRYWALL UNFINISHED BASEMENT CEILING AREA
- NOTES:**
- 1/2" GYPSUM WALL BOARD REQUIRED ON CEILING IN UNFINISHED AREAS WHEN NO SPRINKLER SYSTEM IS INSTALLED.
  - A MAXIMUM AREA OF 80 SQ FT MAY BE OMITTED AS NEEDED FOR INSTALLATION OF PLUMBING, ELECTRICAL, AND/OR HVAC (TYPICALLY AN 8'-0"x8'-0" CEILING SPACE ABOVE MECHANICAL AREA).
  - PROVIDE FIRE BLOCKING AS REQUIRED AT PERIMETER OF ANY AREAS WHERE DRYWALL HAS BEEN OMITTED.

SHEET NO.	MODEL	SET NO.	DATE	REV. NO.	DATE	REMARKS
A-6	LONDON	LDN00	02/13/15			
		VERSION				
		BY				
		DATE				
		OPTION				





**FLOOR PLAN NOTES**

1. ALL HEADERS ARE (2) 2x6 w/ 2x4 WALLS OR (3) 2x6 w/ 2x6 WALLS, UNLESS OTHERWISE NOTED.
2. ALL HEADERS TO HAVE (1) 2x4 OR 2x6 JACK EACH END, UNLESS OTHERWISE NOTED.
3. ALL EXTERIOR WALLS TO BE 4" AND ALL INTERIOR WALLS TO BE 3 1/2", UNLESS OTHERWISE NOTED.
4. HATCHED AREAS INDICATE DROPPED CEILINGS. ALL DROPPED CEILINGS ARE 12" UNLESS OTHERWISE NOTED.
5. SEE "BRACED WALL PANEL DETAIL SHEET" FOR SPECIAL WALL FRAMING LOCATIONS AND HEADER SIZES, IF APPLICABLE.
6. SEE STANDARD DETAIL CATEGORY "IT" SHEET(S) FOR INTERIOR TRIM DETAILS.
7. SEE ARCHITECTURAL DETAIL SHEET "AD" FOR HOUSE SPECIFIC INTERIOR TRIM OPTION TABLE.
8. ALL WINDOWS HAVE 8'-0 1/2" HEADER HEIGHT UNLESS OTHERWISE NOTED.

**GYPSUM NOTES**

- AT GARAGE:**  
GYPSUM BOARD AT COMMON WALLS, CEILINGS, BEAM WRAPS AND SUPPORTS PER STANDARD DETAIL FA-1(b) FIRE ASSEMBLIES OR AS REQUIRED BY LOCAL CODE.
- AT STAIRS:**  
1/2" GYPSUM BOARD AT UNDERSIDE OF STAIRS AND WALLS IN CLOSET

**LEGEND**

- BEARING WALL
  - NON BEARING WALL
  - INDICATES BEARING FROM POINT-LOAD ABOVE
  - JACKS
  - BEAM/HEADER
  - PAD FOOTING
  - STEEL COLUMN
  - PORTAL FRAME
  - JOIST/TRUSS
  - LVL
  - ENGINEERING PAGE NUMBER
- SEE FC DETAILS FOR FRAMING CONNECTORS

IDENTIFIER	DESCRIPTION	OPTIONS	ENG. NUM.	REMARKS
J101	JACK - (2) 2X4 SFF STUD GRADE		1114	
J102	JACK - (2) 2X6 SFF STUD GRADE		1121	
J103	JACK - (2) 2X6 SFF STUD GRADE		1121	
J104	JACK - (2) 2X4 SFF STUD GRADE		1006	
J105	JACK - (4) 2X6 SFF STUD GRADE	MAV	1036	
J106	JACK - (2) 2X6 SFF STUD GRADE		1039, 1041	
J107	JACK - (4) 2X4 SFF STUD GRADE		1027	
J108	JACK - (2) 2X4 SFF STUD GRADE		1025	
J109	JACK - (2) 2X4 SFF STUD GRADE		1025	
J114	JACK - (5) 2X4 SFF#1	MAA	1018, 1021	
J115	JACK - (5) 2X4 SFF#1	MAA, MAS	1018	
J124	JACK - (5) 2X4 SFF STUD GRADE	ELC	1010	
J130	JACK - (2) 2X4 SFF STUD GRADE	ELC	1061	
J131	JACK - (2) 2X4 SFF STUD GRADE	ELC	1061	
J132	JACK - (3) 2X6 SFF STUD GRADE	ELC	2000	
J134	JACK - (2) 2X4 SFF STUD GRADE	ELC	1061	
J135	JACK - (2) 2X4 SFF STUD GRADE	ELC	1061	
J136	JACK - (2) 2X4 SFF STUD GRADE	ELC	1065	
J139	JACK - (4) 2X6 SFF STUD GRADE	ELC, ELL	1046	
J151	JACK - (2) 2X4 SFF STUD GRADE		1077	
J152	JACK - (2) 2X4 SFF STUD GRADE		1077	
J155	JACK - (4) 2X4 SFF STUD GRADE	MAV	1122, 1124	

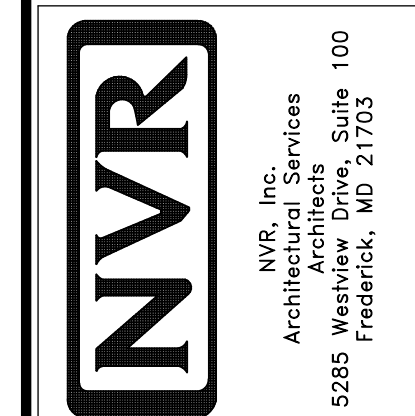
IDENTIFIER	DESCRIPTION	LENGTH	OPTIONS	ENG. NUM.	REMARKS
B101	BEAM STEEL - W8X21	22'-1"	MAV	1046, 1048, 1050	
B102	BEAM STEEL - W8X13	10'-11"	ELC, ELL	1046, 1048, 1050	
PF101	EXT HEADER - 2X12 - 2 PLY	14'-8"		1077	

IDENTIFIER	STYLE	HEIGHT	OPTIONS	ENG. NUM.	REMARKS
C101	STANCHION - 4 IN DIA 11GA ADJ.	8'-11 5/8"	MAV/FBA	1036	
C102	STANCHION - 4 IN DIA 11GA ADJ.	9'-7 1/4"	FBA	1036	

**FIRST FLOOR PLAN**

SCALE: 1/4" = 1'-0"

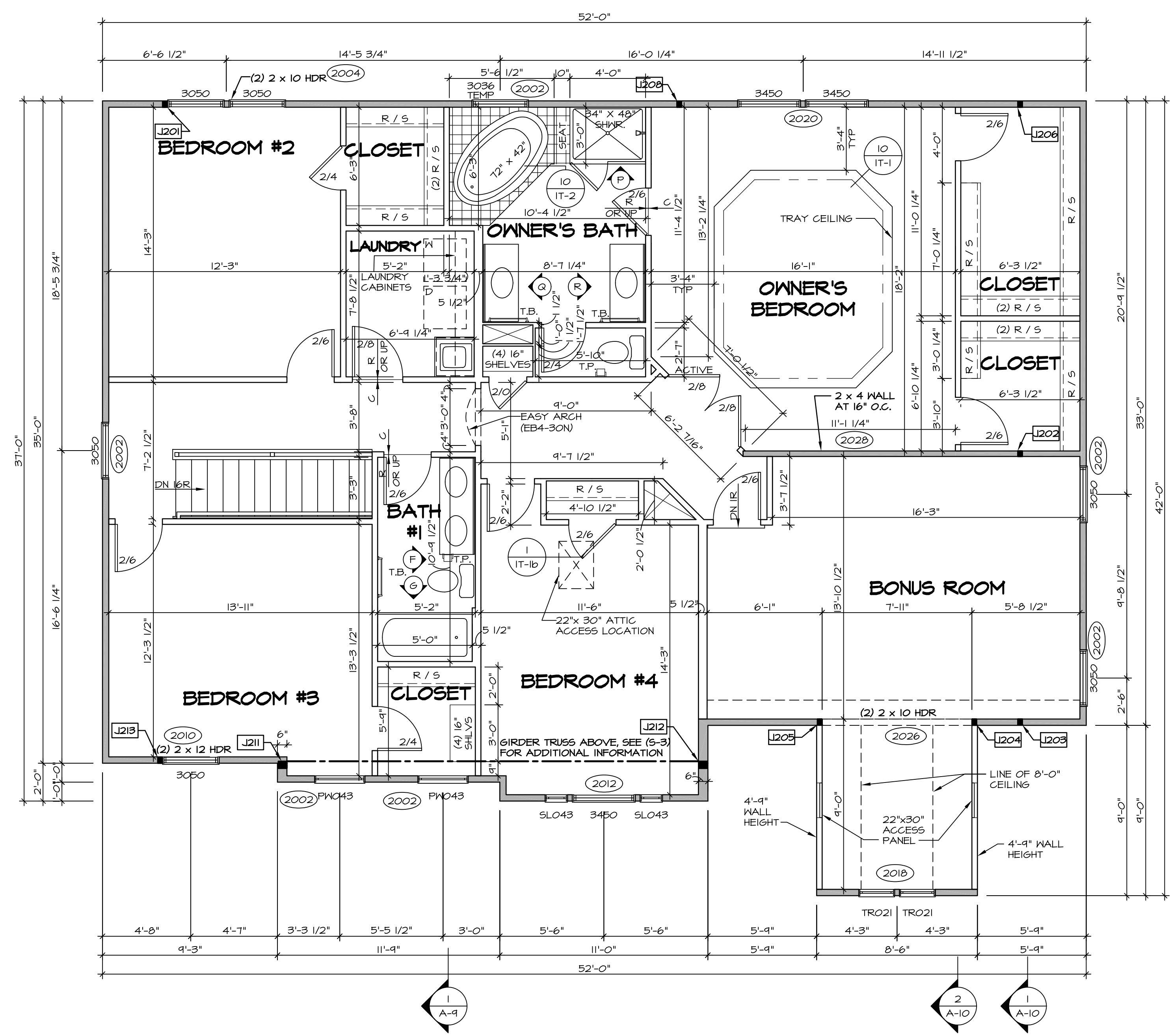
NVR, Inc., owner, expressly reserves the copyright in these plans. These plans are not to be reproduced, changed, copied, or otherwise used in any way without the written consent of NVR, Inc.



SET NO. LDN00  
VERSION 02  
DRAWN BY TVT  
DATE: 8/12/15  
OPTION

MODEL  
**LDN00**  
DRAWING TITLE  
**FIRST FLOOR PLAN**  
OPTION DESCRIPTION

SHEET NO.  
**A-7**  
39



**LEGEND**

- BEARING WALL
- NON BEARING WALL
- INDICATES BEARING FROM POINT-LOAD ABOVE
- JACKS
- BEAM/HEADER
- PAD FOOTING
- STEEL COLUMN
- PORTAL FRAME
- JOIST/TRUSS
- LVL
- ENGINEERING PAGE NUMBER

SEE FC DETAILS FOR FRAMING CONNECTORS

- FLOOR PLAN NOTES**
- ALL HEADERS ARE (2) 2x6 w/ 2x4 WALLS OR (3) 2x6 w/ 2x6 WALLS, UNLESS OTHERWISE NOTED.
  - ALL HEADERS TO HAVE (1) 2x4 OR 2x6 JACK EACH END, UNLESS OTHERWISE NOTED.
  - ALL EXTERIOR WALLS TO BE 4" AND ALL INTERIOR WALLS TO BE 3 1/2", UNLESS OTHERWISE NOTED.
  - HATCHED AREAS INDICATE DROPPED CEILINGS. ALL DROPPED CEILINGS ARE 12" UNLESS OTHERWISE NOTED.
  - SEE "BRACED WALL PANEL DETAIL SHEET" FOR SPECIAL WALL FRAMING LOCATIONS AND HEADER SIZES, IF APPLICABLE.
  - SEE STANDARD DETAIL CATEGORY "IT" SHEET(S) FOR INTERIOR TRIM DETAILS.
  - SEE ARCHITECTURAL DETAIL SHEET "AD" FOR HOUSE SPECIFIC INTERIOR TRIM OPTION TABLE.
  - ALL WINDOWS HAVE 7'-0 1/2" HEADER HEIGHT UNLESS OTHERWISE NOTED.

- GYPSUM NOTES**
- AT GARAGE:  
GYPSUM BOARD AT COMMON WALLS, CEILINGS, BEAM WRAPS AND SUPPORTS PER STANDARD DETAIL FA-1(b) FIRE ASSEMBLIES OR AS REQUIRED BY LOCAL CODE.
- AT STAIRS:  
1/2" GYPSUM BOARD AT UNDERSIDE OF STAIRS AND WALLS IN CLOSET

**SECOND FLOOR JACK SCHEDULE**

IDENTIFIER	DESCRIPTION	OPTIONS	ENG. NUM.	REMARKS
J201	JACK - (2) 2X4 SFF STUD GRADE	ELC, ELL	2001a	
J202	JACK - (2) 2X4 SFF STUD GRADE	ELC, ELL, MAV	2001	
J203	JACK - (2) 2X4 SFF STUD GRADE	ELC, ELL, MAV	2001	
J204	JACK - (2) 2X4 SFF STUD GRADE	MAV		
J205	JACK - (2) 2X4 SFF STUD GRADE	MAV		
J206	JACK - (2) 2X4 SFF STUD GRADE	ELC, ELL, MAV	2001	
J208	JACK - (2) 2X4 SFF STUD GRADE	ELC, ELL, MAA	2000	
J211	JACK - (3) 2X6 SFF STUD GRADE	ELC	2000	EXTEND TO THRU. TOP PLATE
J212	JACK - (3) 2X6 SFF STUD GRADE	ELC	2000	EXTEND TO THRU. TOP PLATE
J213	JACK - (2) 2X4 SFF STUD GRADE	ELC	2010	

**SECOND FLOOR PLAN**  
SCALE: 1/4" = 1'-0"

REMARKS

REV. NO. DATE

NVR, Inc., owner, expressly reserves its copyright in these plans. These plans are not to be reproduced, changed, copied, or otherwise used in any way without the written consent of NVR, Inc.

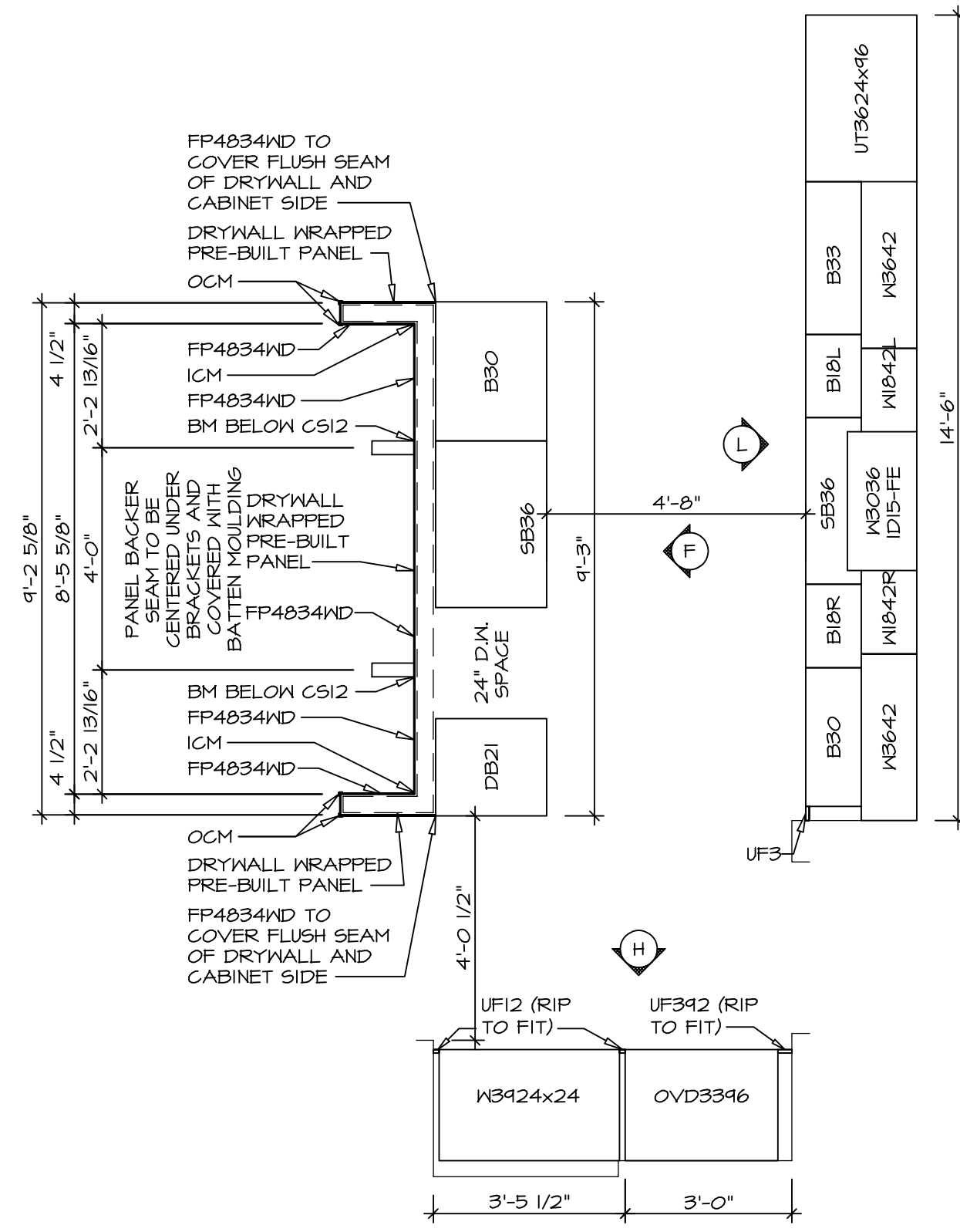
**NVR**  
Architectural Services  
5285 Washington Blvd  
Frederick, MD 21703

SET NO. LDN00  
VERSION 02  
DRAWN BY SDTT  
DATE: 7/3/15  
OPTION

MODEL  
**LANDON**  
DRAWING TITLE  
**SECOND FLOOR PLAN**  
OPTION DESCRIPTION

SHEET NO.  
**A-8**  
41

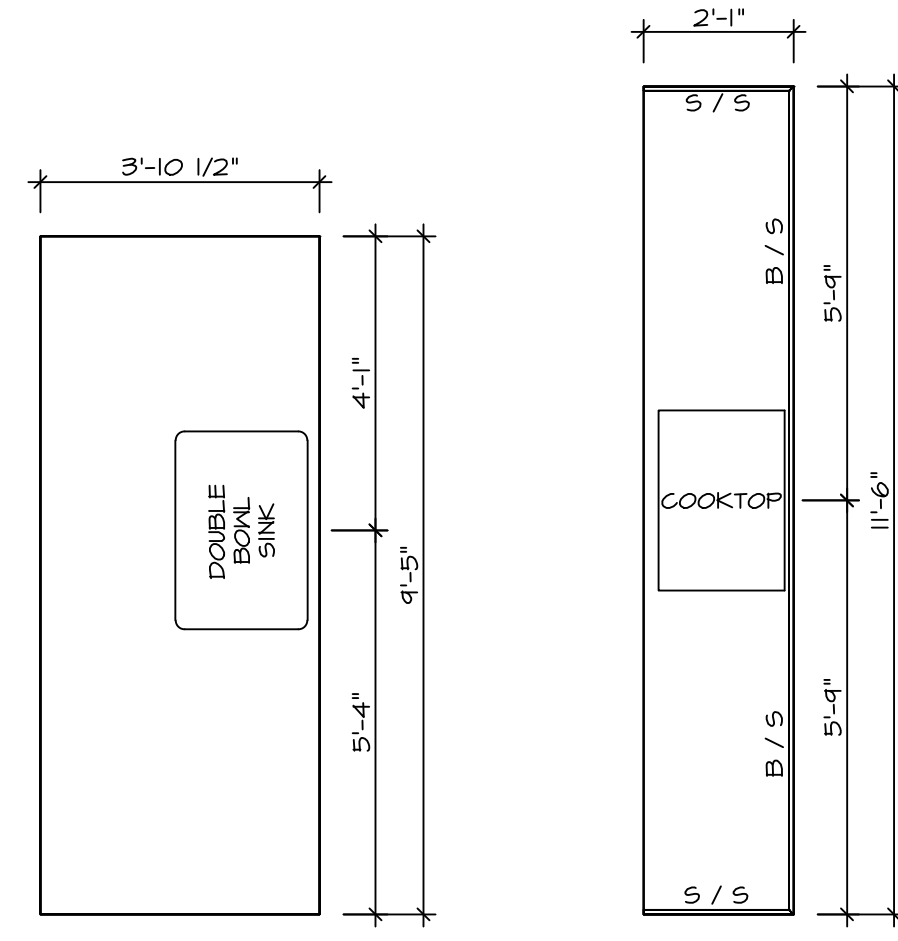
C:\NVR\Solves\LANDON\_LDNOO\_02\DC-B1-0223\621290\Sheet\Lot\_Specific\41\_A-8\_PLN2\_LS.dwg 12/19/17 - 2:31 am



**CABINET PLAN  
KC - 2961**

3  
A-12

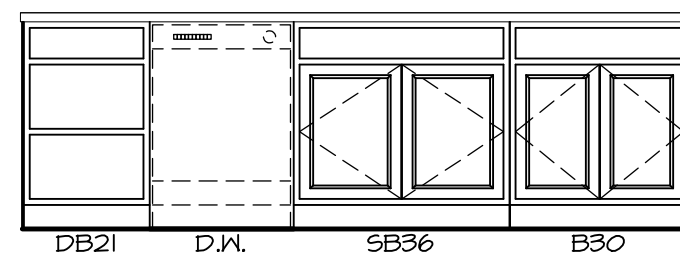
SCALE: 3/8" = 1'-0"



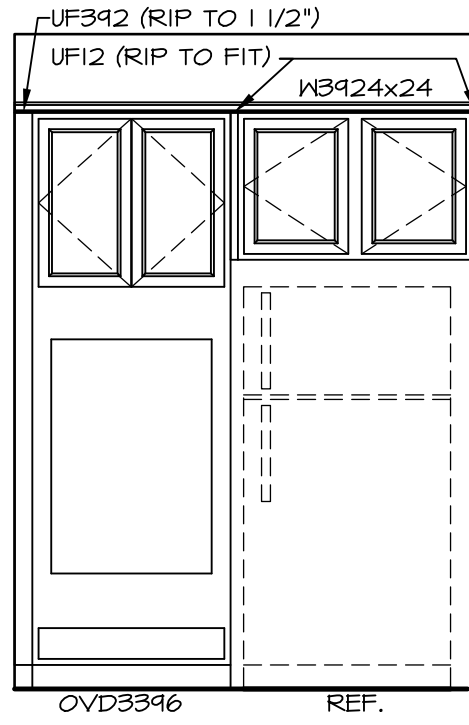
**COUNTERTOP PLAN  
KC - 2961**

4  
A-12

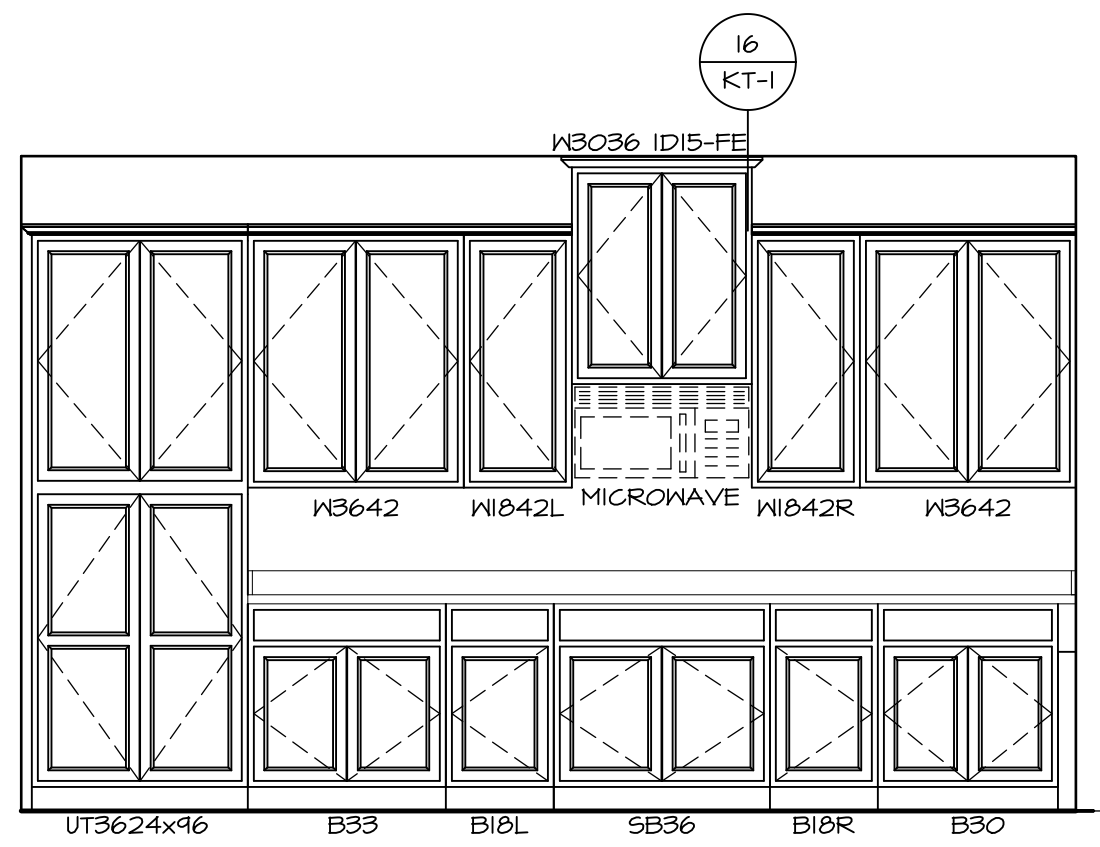
SCALE: 3/8" = 1'-0"



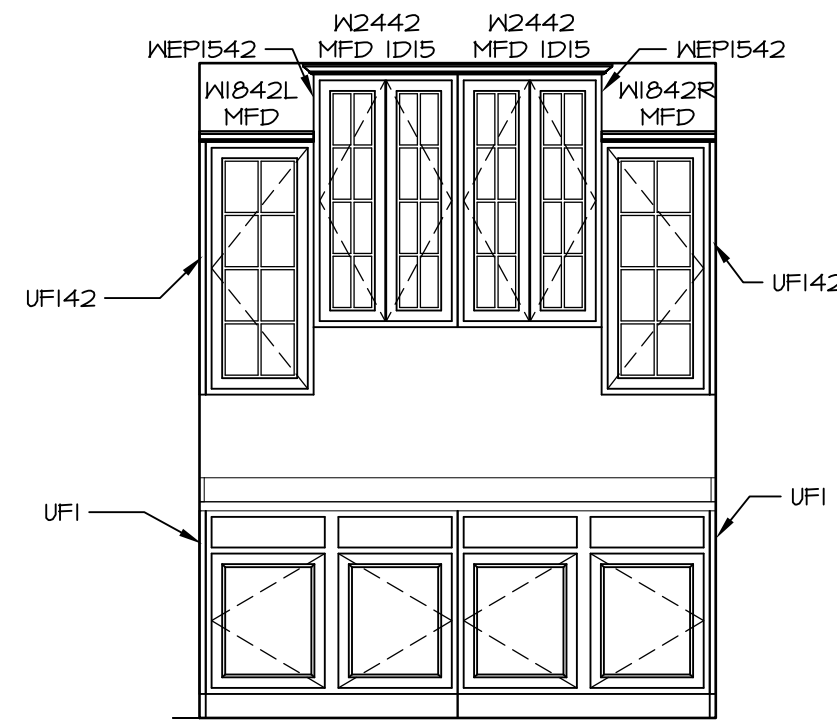
**F ELEVATION "F"**  
SCALE: 3/8" = 1'-0"



**H ELEVATION "H"**  
SCALE: 3/8" = 1'-0"

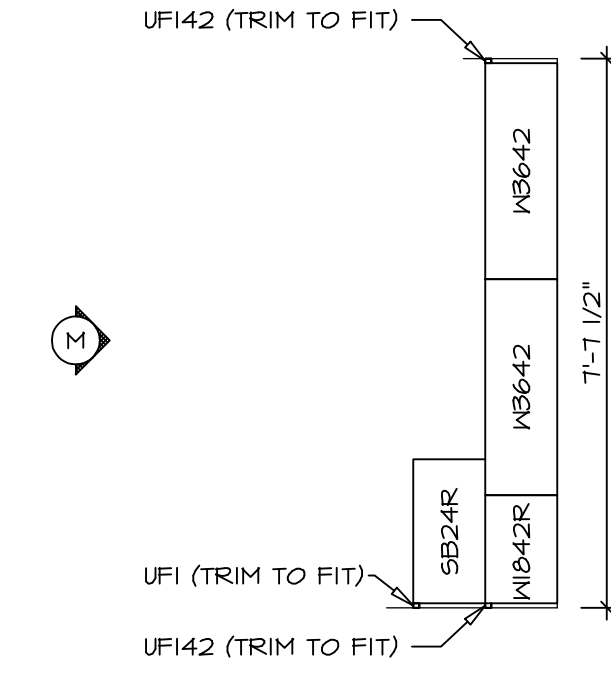


**L ELEVATION "L"**  
SCALE: 3/8" = 1'-0"



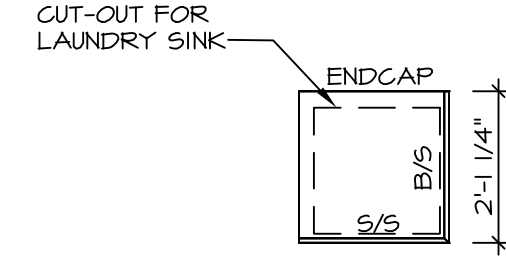
**J ELEVATION "J"**  
SCALE: 3/8" = 1'-0"

SHEET NO. <b>A-12</b>	MODEL <b>LONDON</b>	DRAWING TITLE <b>KITCHEN PLAN</b>	OPTION DESCRIPTION <b>51</b>	SET NO. <b>LDN00</b> VERSION <b>02</b> DRAWN BY <b>SDTT</b> DATE: <b>8/6/15</b> OPTION	REMARKS



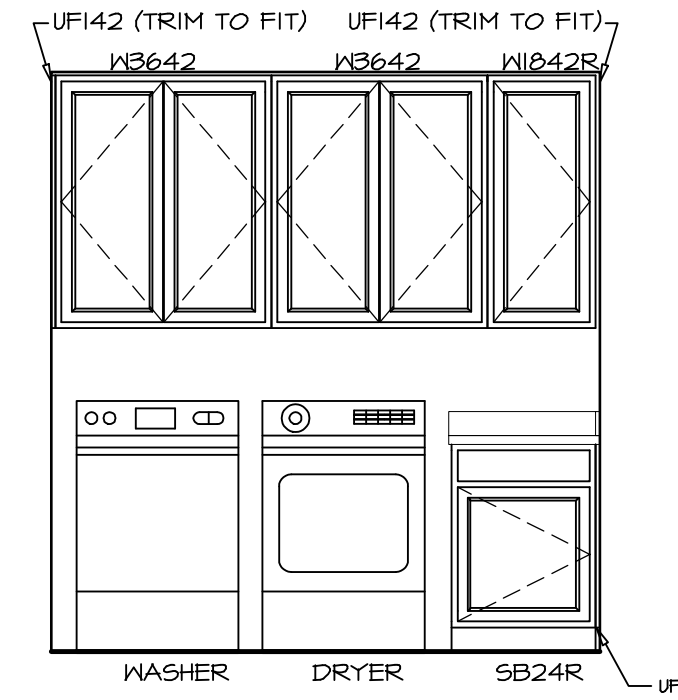
**CABINET PLAN**  
**KC - 2964**

1  
A-12b  
SCALE: 3/8" = 1'-0"



**COUNTERTOP PLAN**  
**KC - 2964**

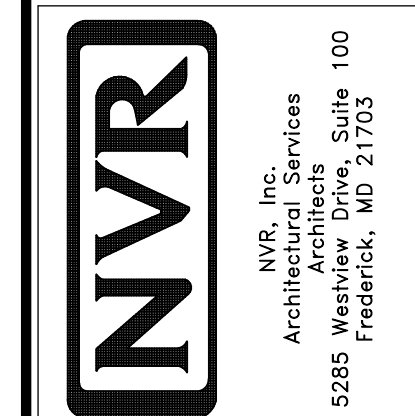
2  
A-12b  
SCALE: 3/8" = 1'-0"

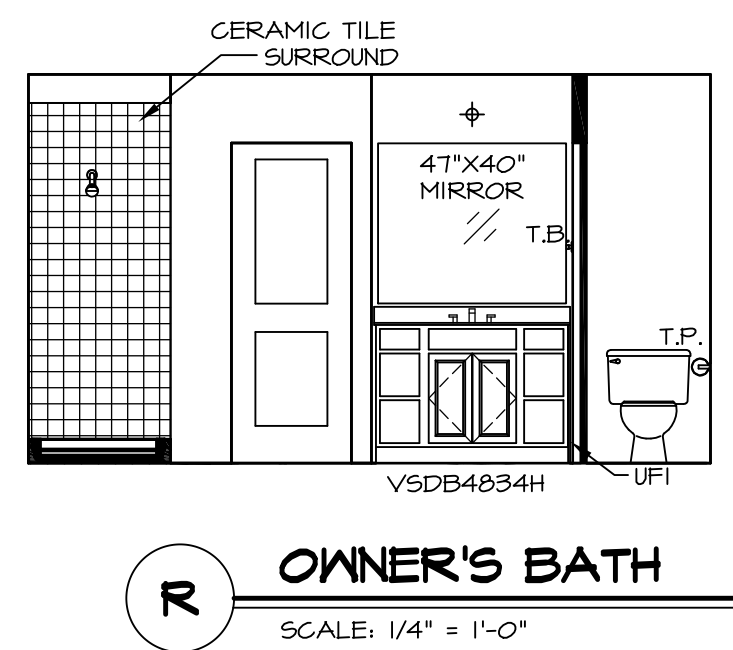
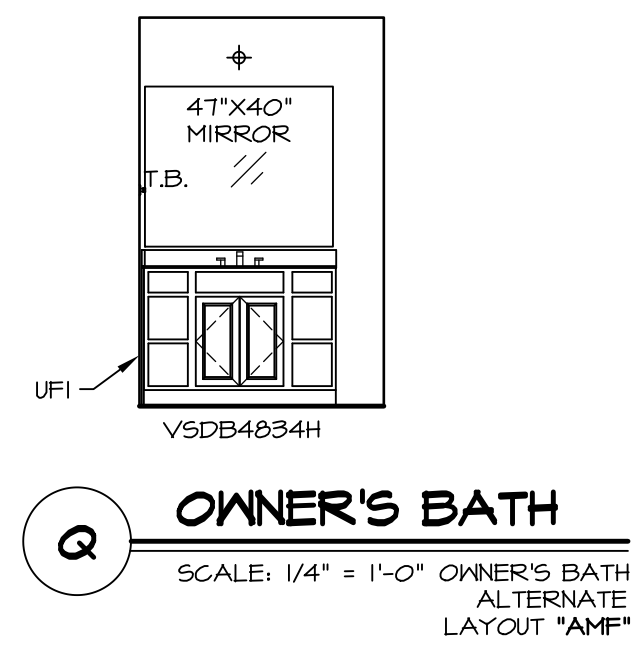
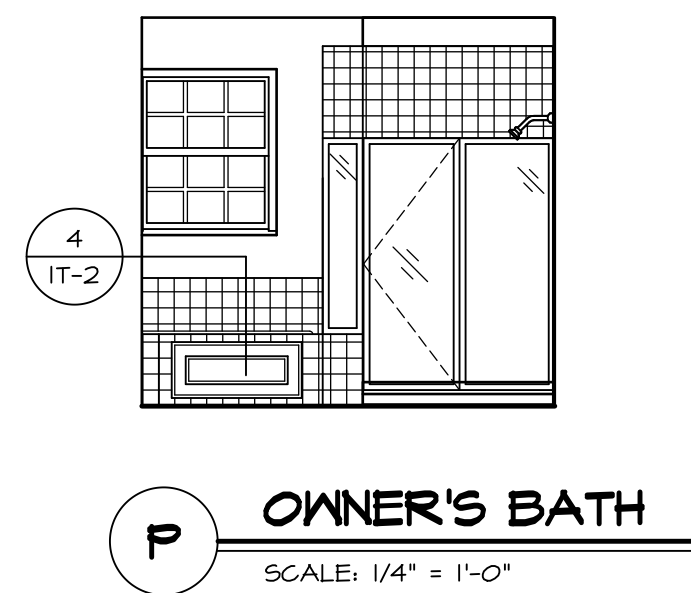
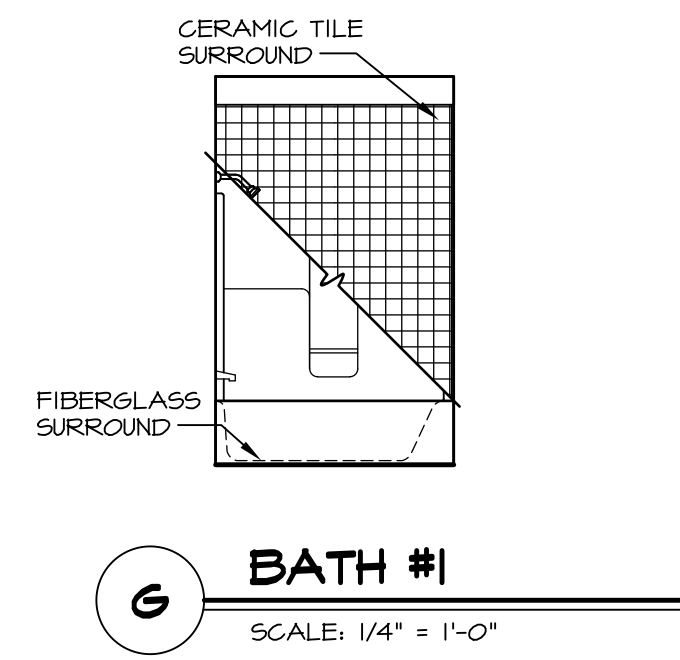
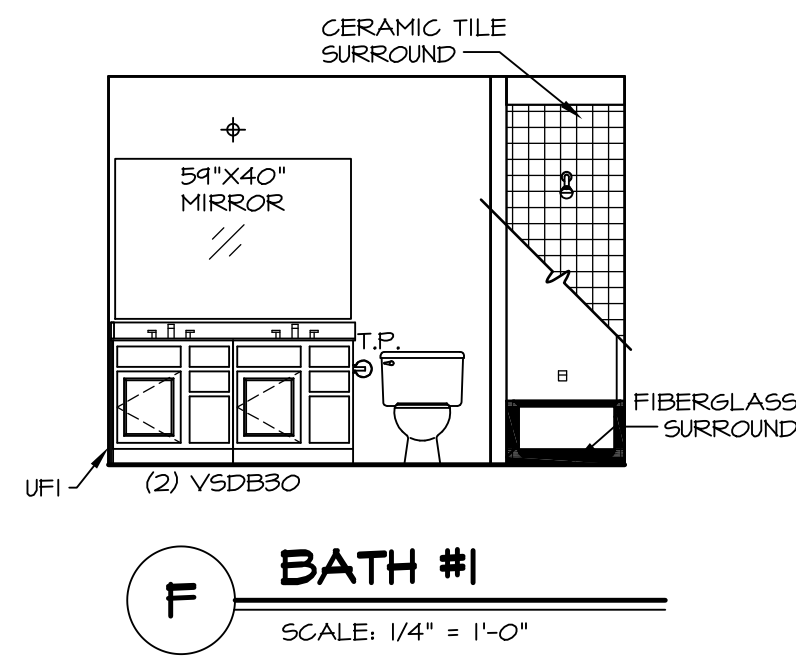
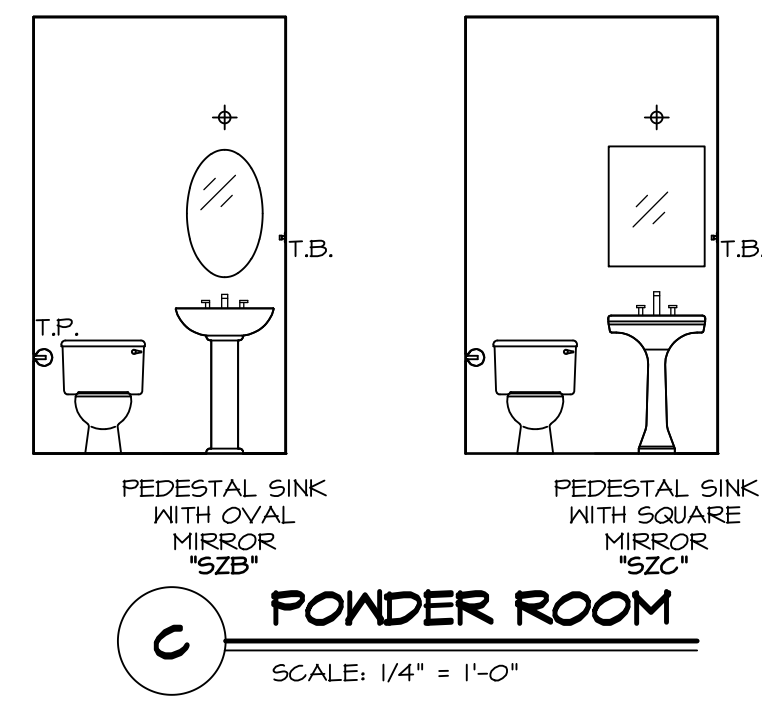
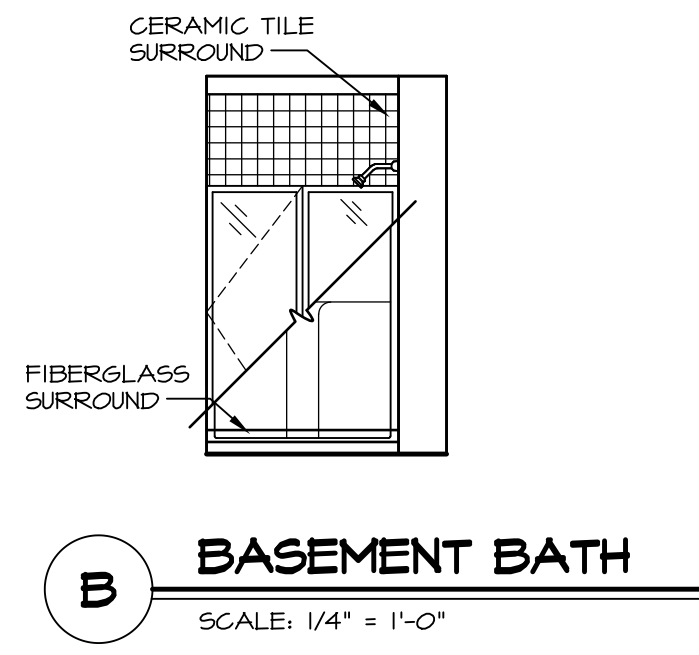
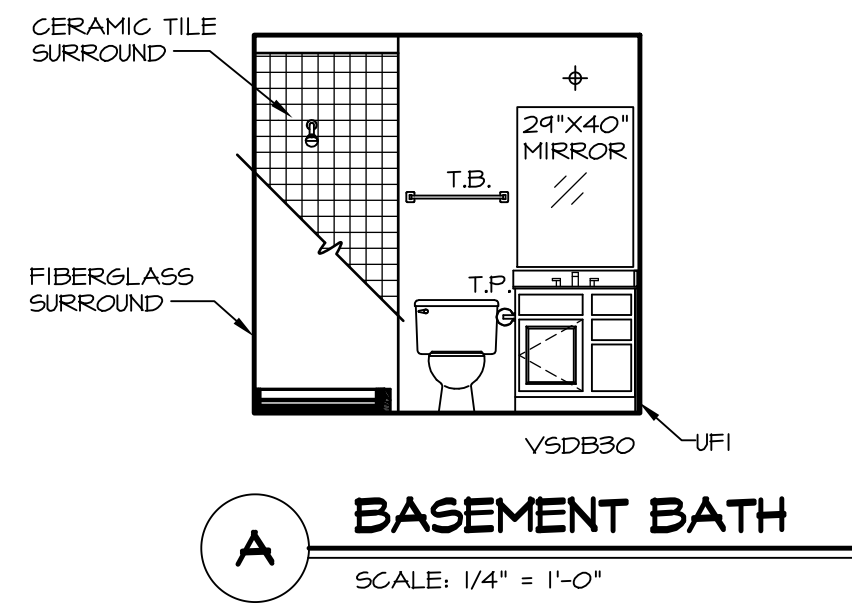


**ELEVATION "M"**  
SCALE: 3/8" = 1'-0"

SHEET NO.	MODEL	SET NO.	VERSION	DRAWN BY	DATE	OPTION	REVISIONS	REMARKS
A-12b	LONDON	LDN00	02	SDTT	8/6/15			
52								

NVR, Inc., owner, expressly reserves its copyright in these plans. These plans are not to be reproduced, changed, copied, or used in any way without the prior written consent of NVR, Inc.

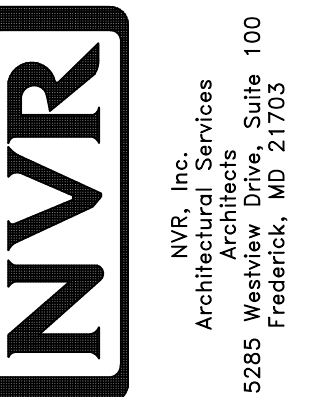




**NOTES:**

1. TEMPERED GLASS SHOWER ENCLOSURE WITH SWING DOOR OR OPTIONAL SLIDING DOOR BY DIVISION
2. TUB ACCESS PANELS PROVIDED AS NEEDED, ALL MATERIALS BY DIVISION
3. REFER TO SHEET IT-2 FOR TUB AND SHOWER DETAILS.
4. ALL V5DB24-42 DRAWERS TO BE SET ON RIGHT HAND.
5. BATH ELEVATIONS ARE SHOWN PER PLAN.

NVR, Inc., owner, expressly reserves its copyright in these plans. These plans are not to be reproduced, changed, copied, or otherwise used in any way without the written consent of NVR, Inc.



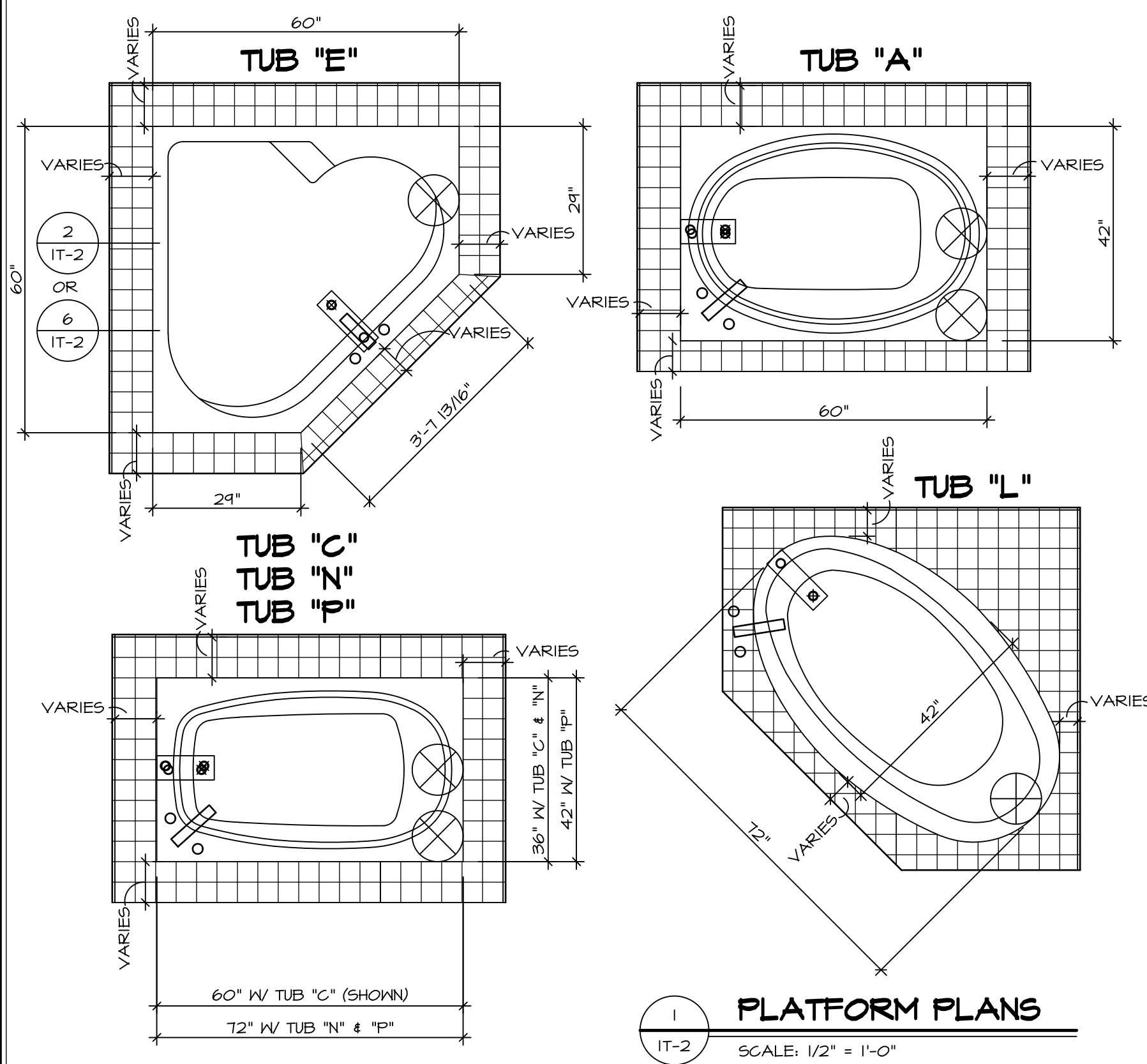
SET NO. LDN00  
VERSION 02  
DRAWN BY SDTT  
DATE: 7/30/15  
OPTION

MODEL LONDON  
DRAWING TITLE BATH ELEVATIONS  
OPTION DESCRIPTION

SHEET NO. A-13  
55

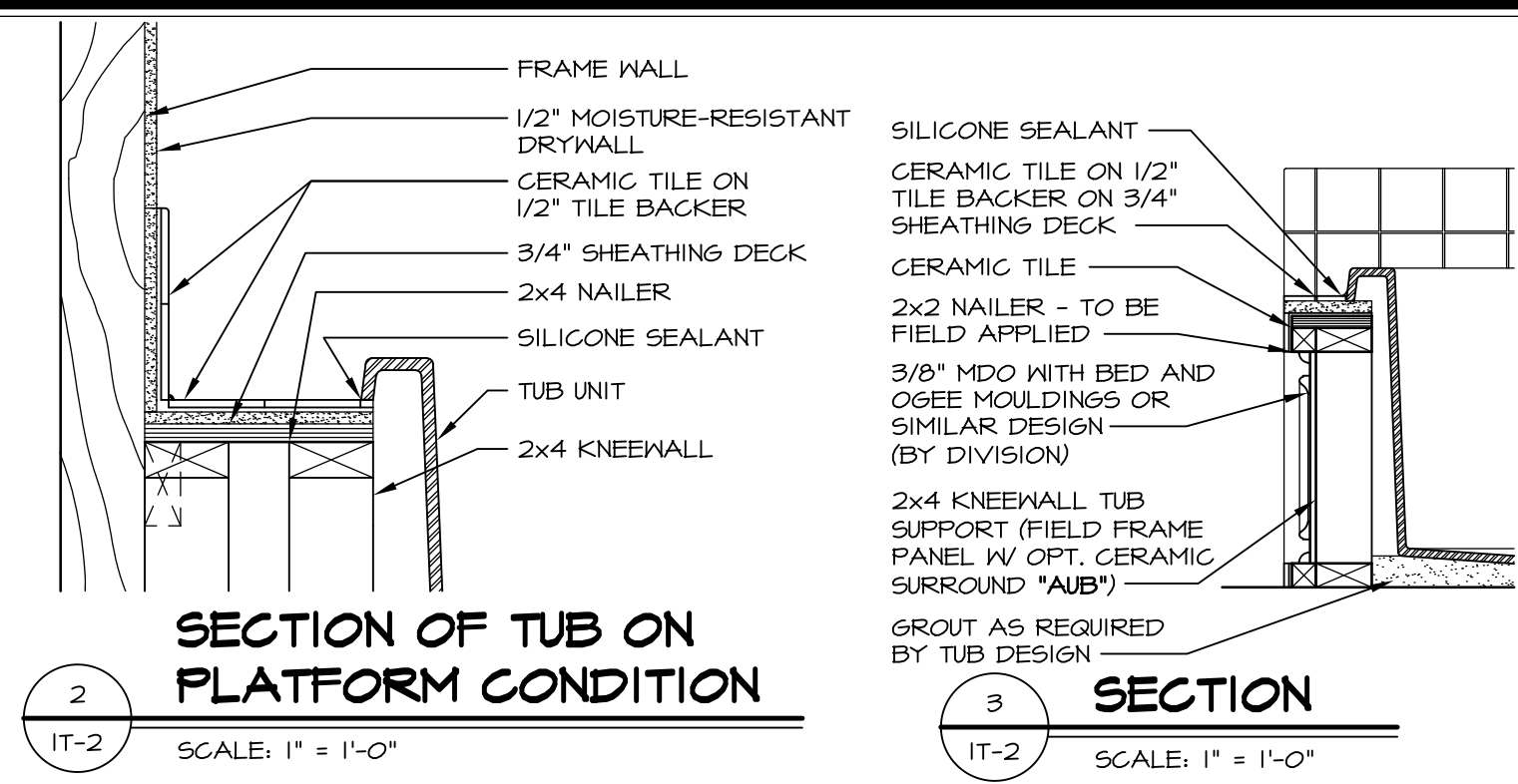
REMARKS

REV. NO. DATE

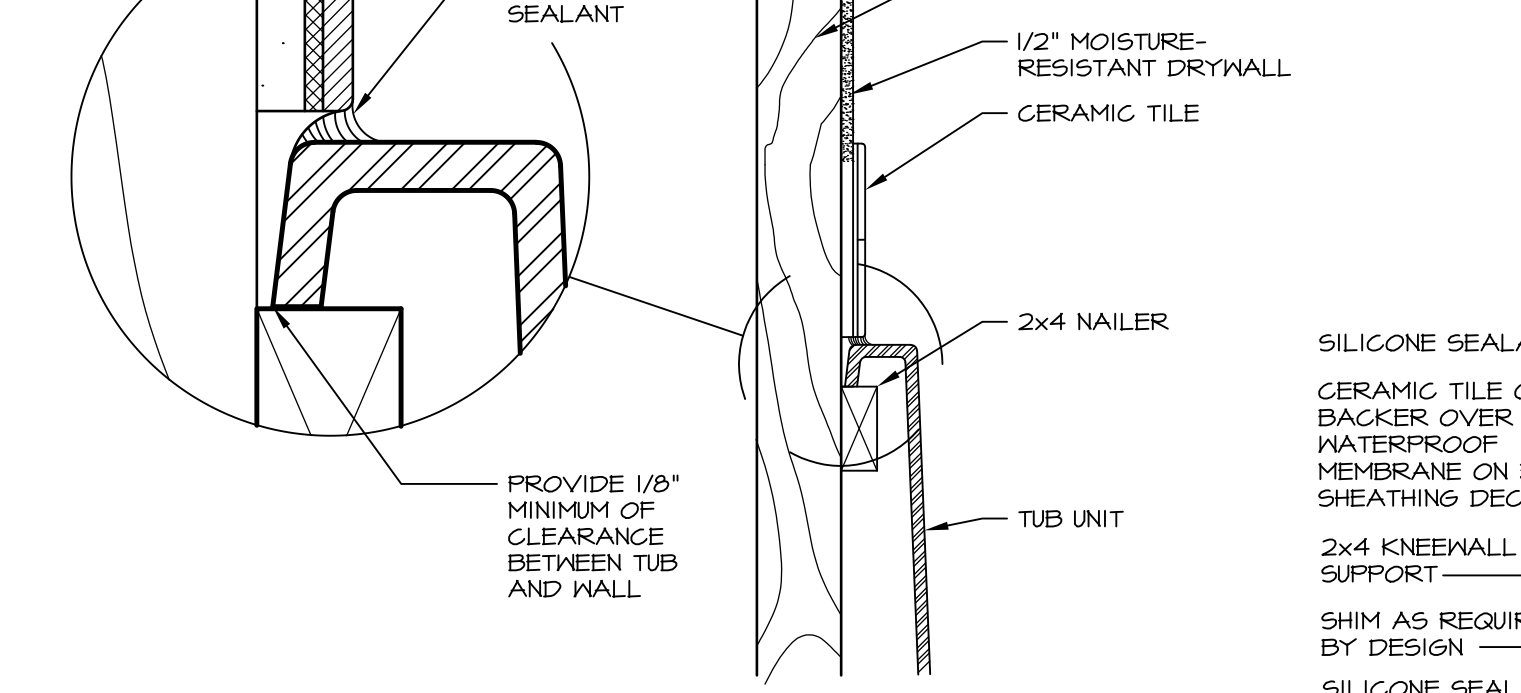


**1 PLATFORM PLANS**  
SCALE: 1/2" = 1'-0"

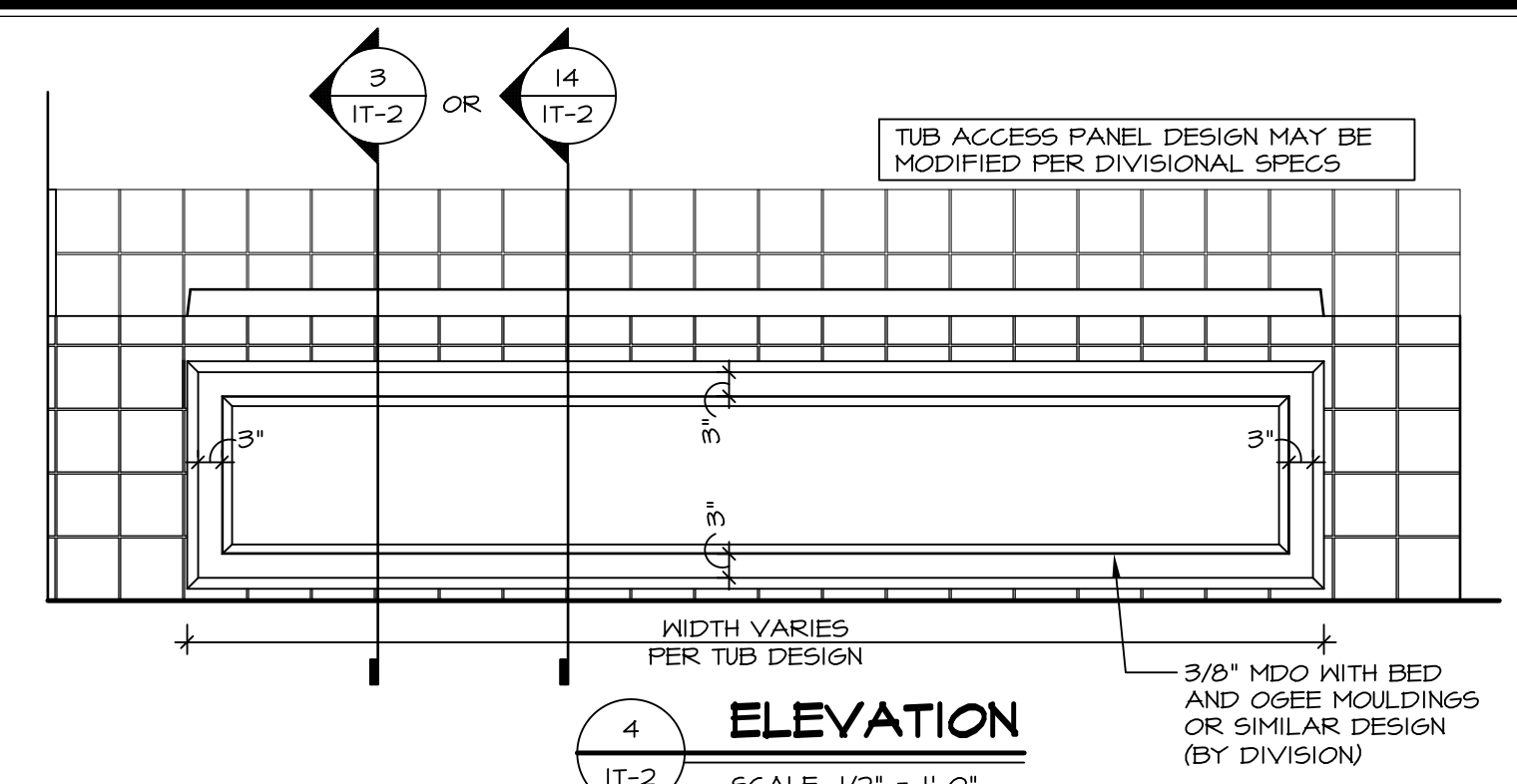
TUB	MANUF.	HEIGHT	WIDTH	LENGTH	TUB DECK PANEL HEIGHT
"A"	KOHLER/ STERLING	18 3/4"	42"	60"	17 1/8"
"C"	KOHLER/ STERLING	18 3/4"	36"	60"	17 1/8"
"E"	KOHLER/ STERLING	19 1/2"	60"	60"	17 7/8"
"L"	KOHLER/ STERLING	18 1/2"	42"	72"	16 7/8"
"N"	KOHLER/ STERLING	18 3/4"	36"	72"	17 1/8"
"P"	KOHLER/ STERLING	18 3/4"	42"	72"	17 1/8"



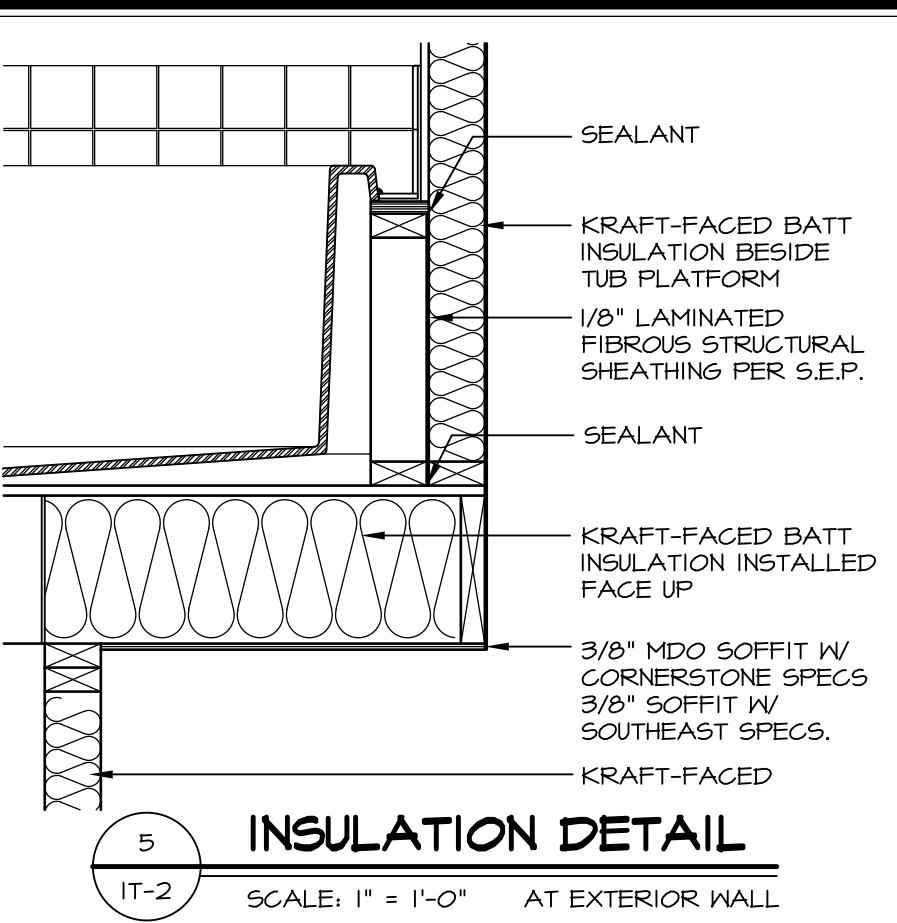
**2 SECTION OF TUB ON PLATFORM CONDITION**  
SCALE: 1" = 1'-0"



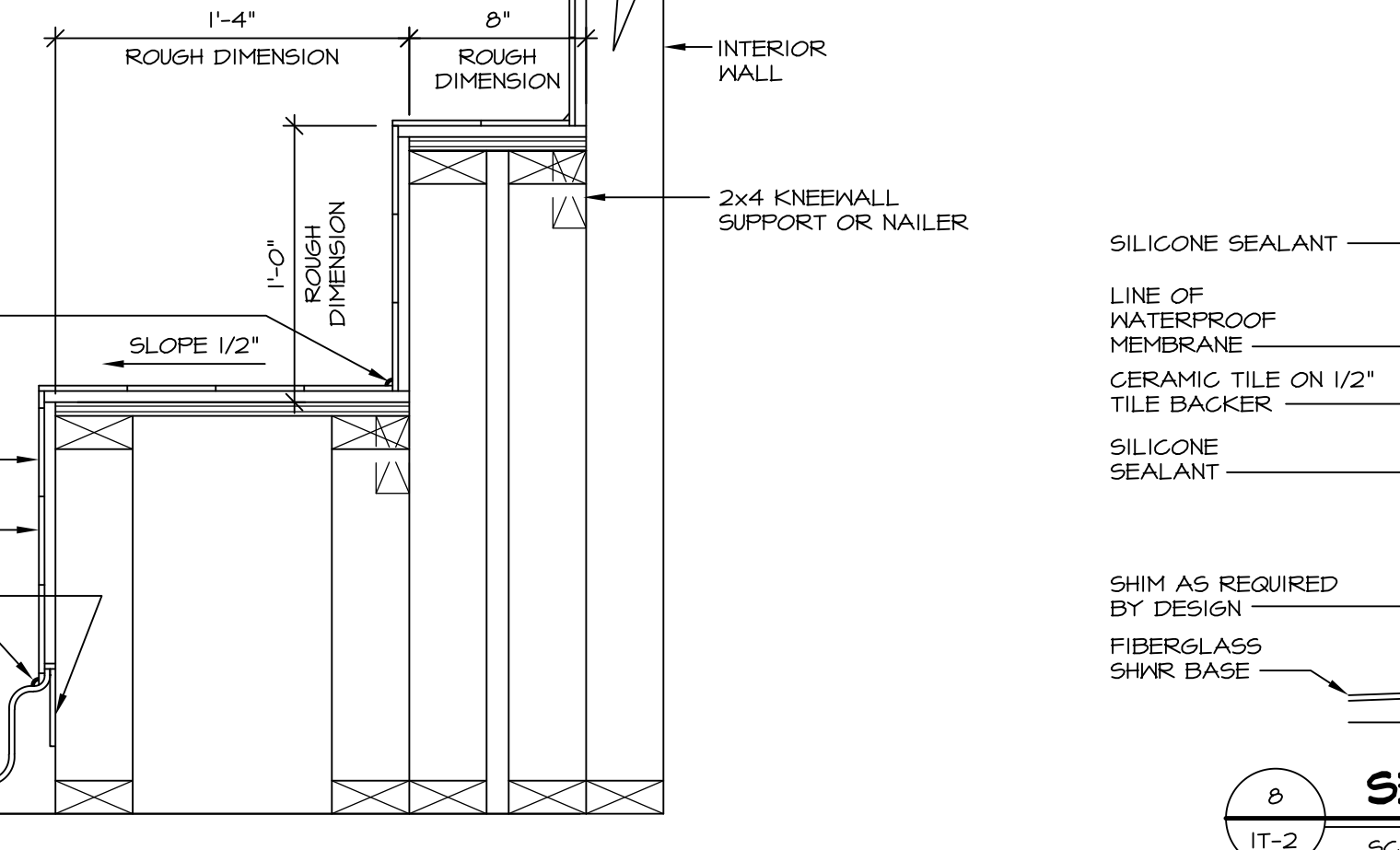
**3 SECTION OF TUB TO WALL CONDITION**  
SCALE: 1" = 1'-0"



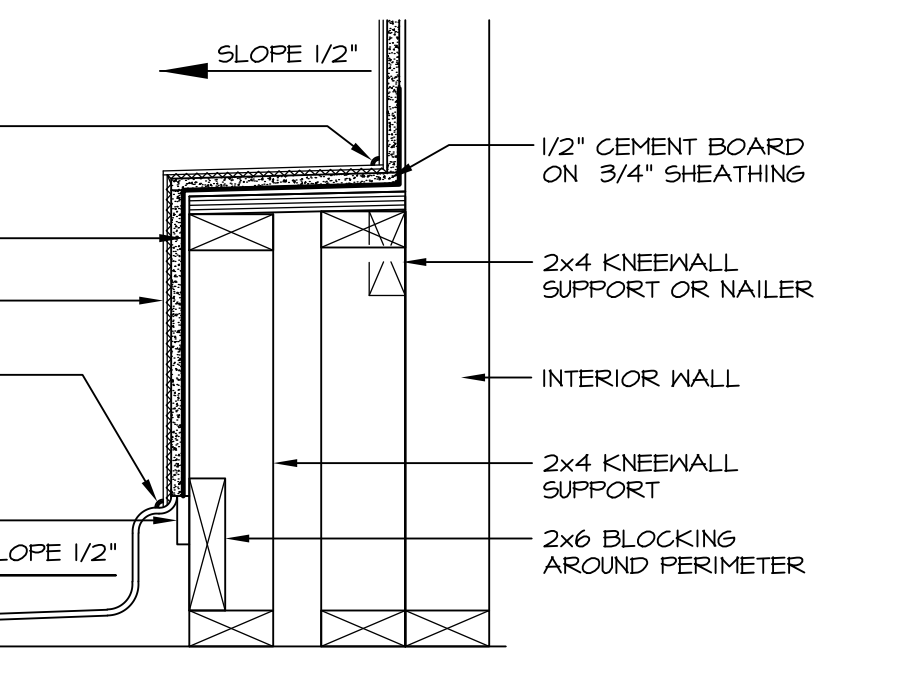
**4 ELEVATION**  
SCALE: 1/2" = 1'-0"



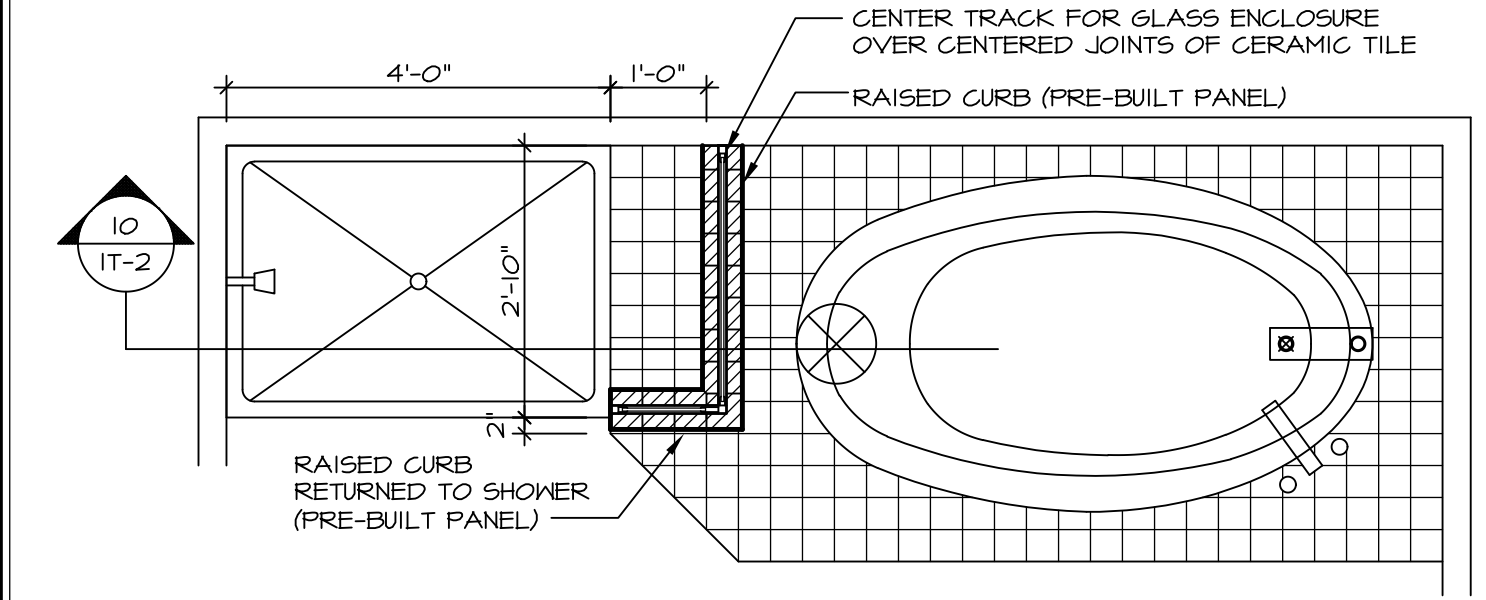
**5 INSULATION DETAIL**  
SCALE: 1" = 1'-0" AT EXTERIOR WALL



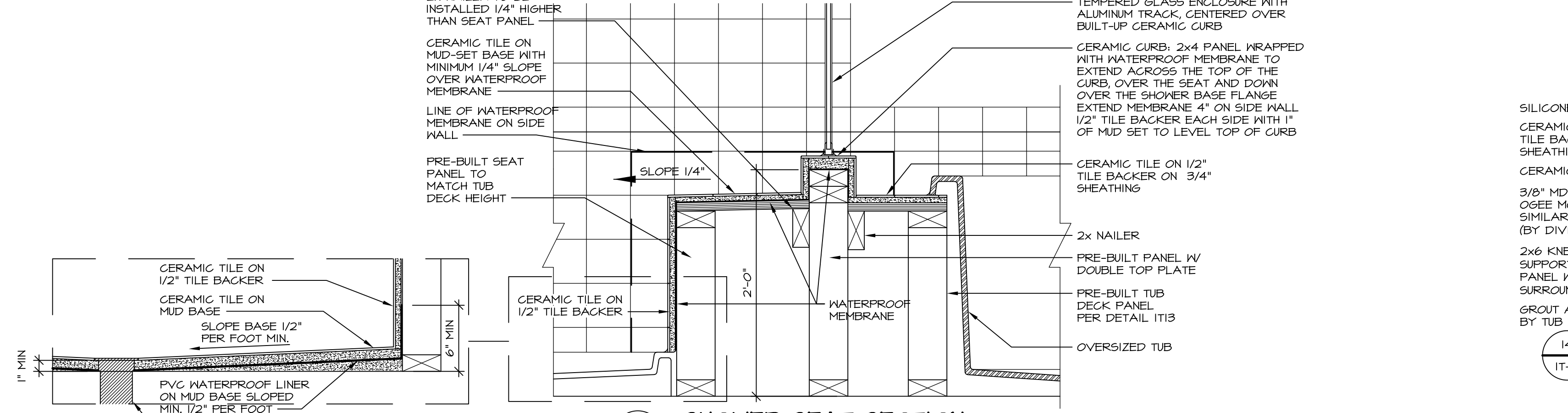
**6 SECTION OF SHOWER SEAT AND SHELF**  
SCALE: 1/2" = 1'-0"



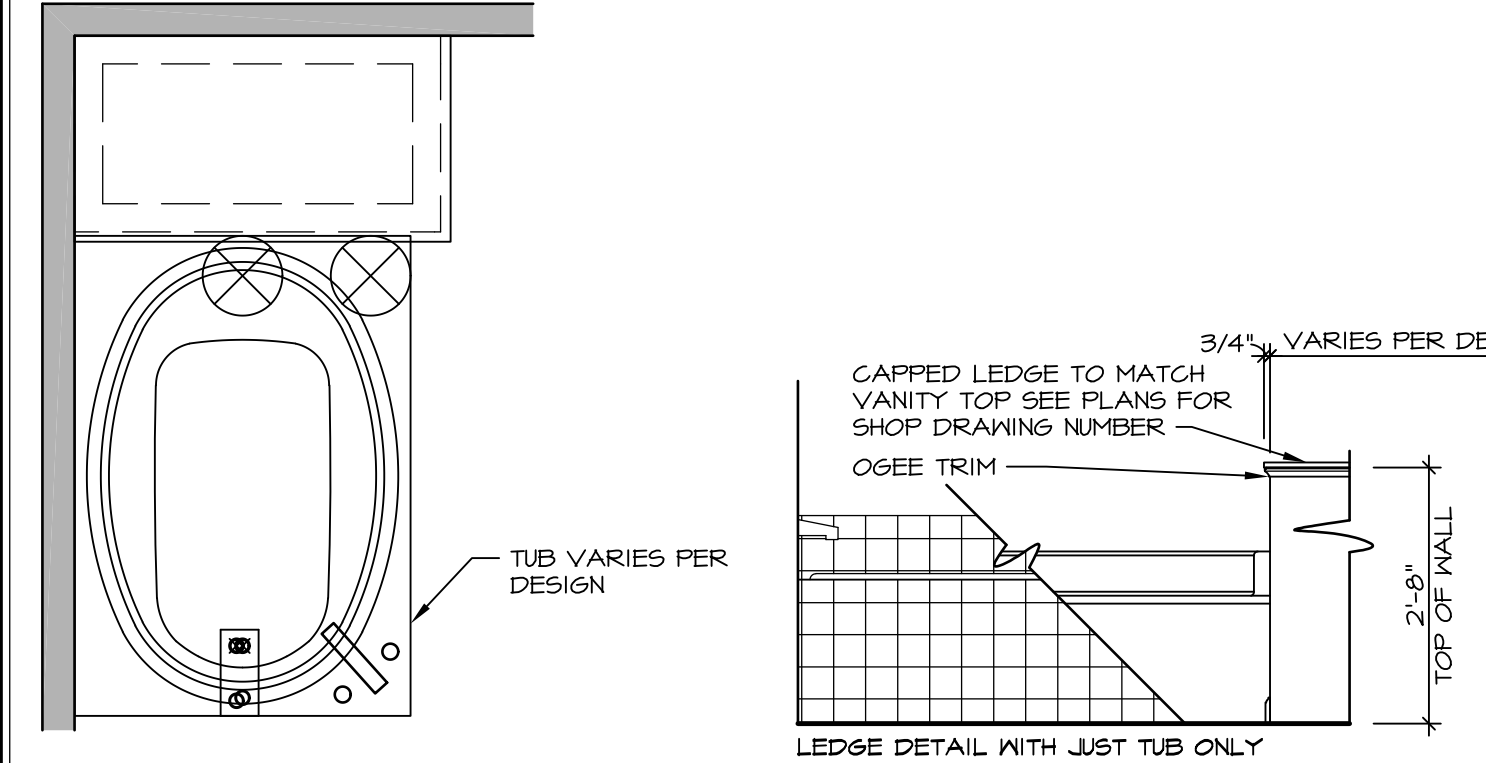
**7 SECTION OF SHOWER SEAT**  
SCALE: 1/2" = 1'-0" FIBERGLASS SHOWER BASE



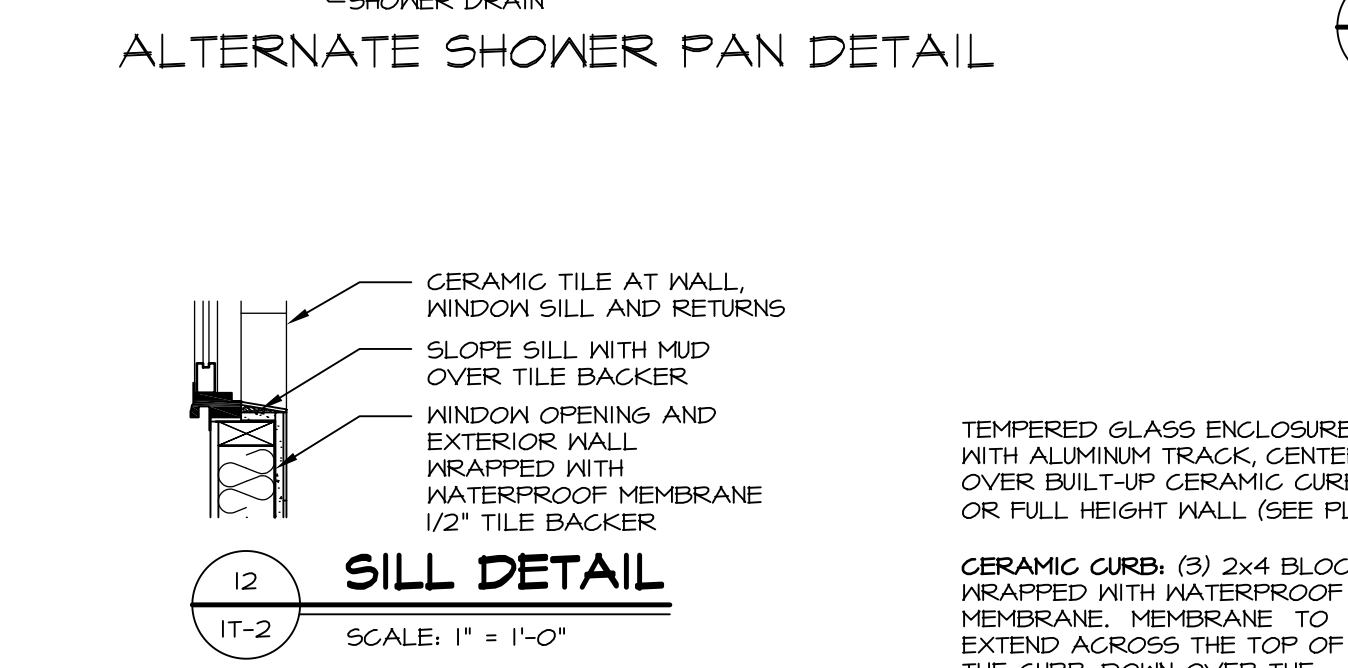
**8 SHOWER SEAT PLAN / DETAIL**  
SCALE: 1/2" = 1'-0"



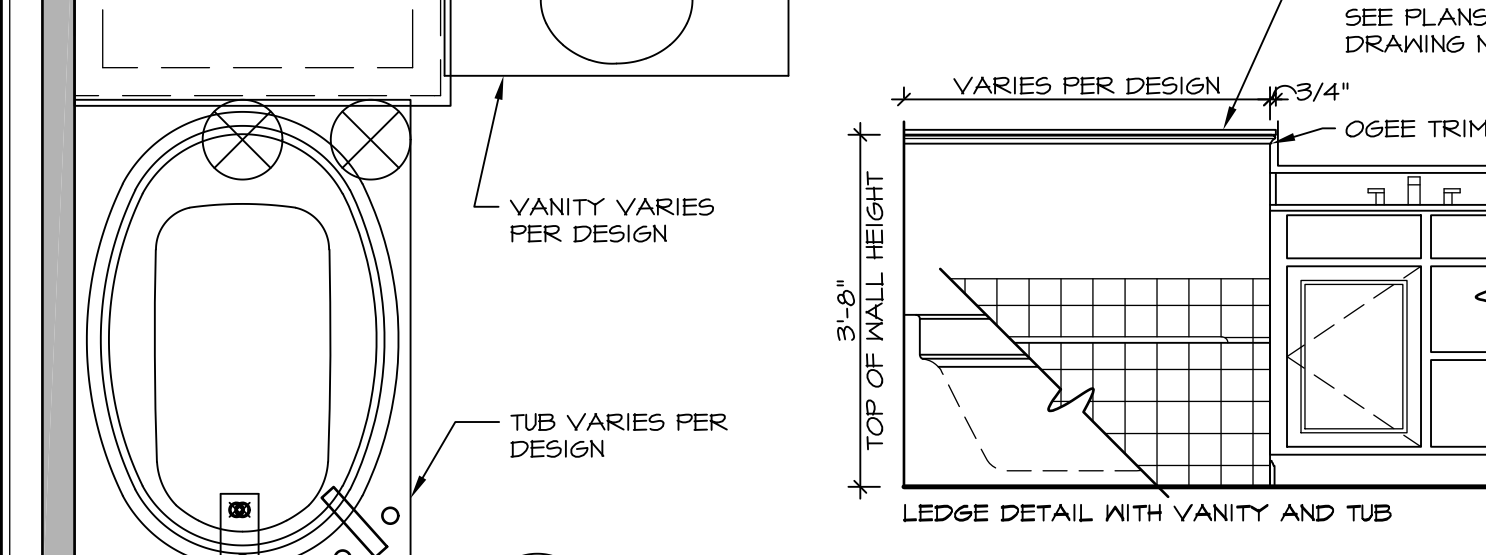
**9 SHOWER SEAT SECTION**  
SCALE: 1/2" = 1'-0"



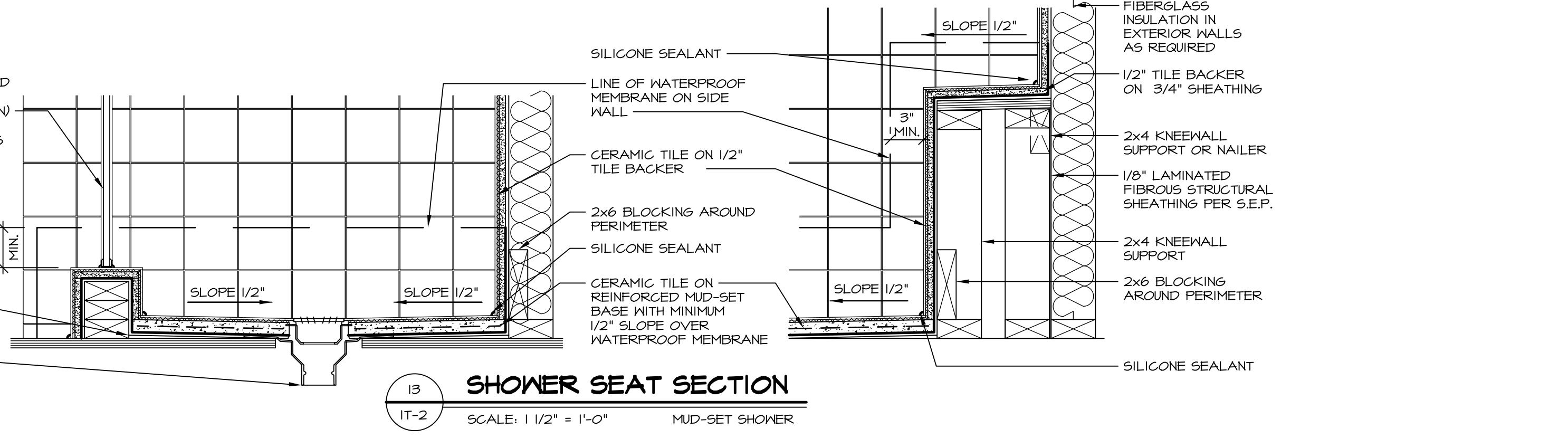
**10 BATHROOM LEDGE DETAIL (TUB ONLY)**  
SCALE: 1/2" = 1'-0"



**11 SILL DETAIL**  
SCALE: 1" = 1'-0"



**12 BATHROOM LEDGE DETAIL (VANITY AND TUB)**  
SCALE: 1/2" = 1'-0"



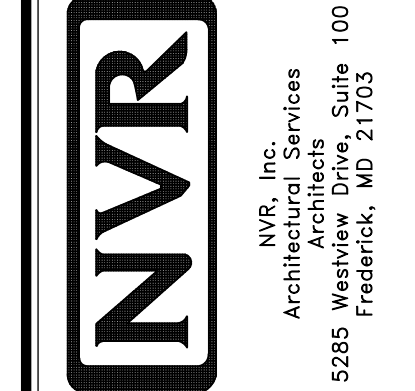
**13 SHOWER SEAT SECTION**  
SCALE: 1/2" = 1'-0" MUD-SET SHOWER

**11 BATHROOM LEDGE DETAIL**  
SCALE: 1/2" = 1'-0"

REVISIONS

REV. NO.	DATE	DESCRIPTION
1	5/1/17	EBP - REVISED DETAIL 1 AND 11 TO REMOVE TUB ACCESS PANEL REF. (DSS #15 5414)
2	9/2/17	EBP - REVISED T-FLY NOTE TO CALL OUT LFS
3	9/2/17	EBP - REVISED NOTE ON DETAIL #1 - REVISED ORDER OF MATERIAL PARA#4934

NVR, Inc., owner, expressly reserves its common law copyright and other property rights in these plans. These plans are not to be reproduced, copied, or otherwise used in any way without the prior written consent of NVR, Inc.



SET NO. NVR

VERSION

DRAWN BY

DATE:

OPTION

MODEL STANDARD DETAILS

DRAWING TITLE INTERIOR TRIM DETAILS

BATH DETAILS

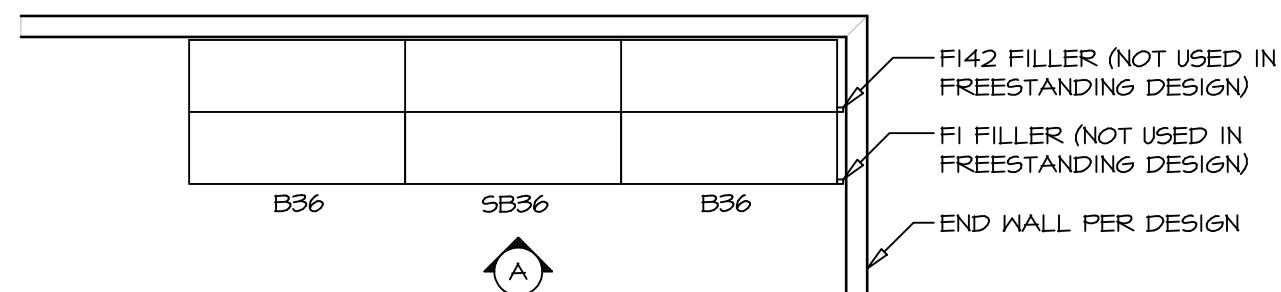
OPTION DESCRIPTION

SHEET NO. IT-2

J:\Dwg\NVR\Interior Trim\IT2.dwg 09/27/17 - 9:20 am

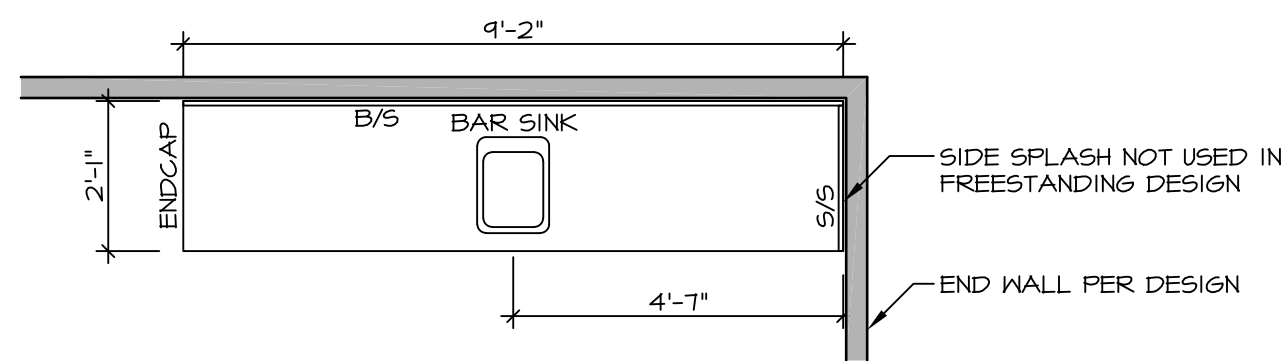


NOTE:  
REVIEW HOUSE SPECIFIC  
PLANS FOR LOCATION  
AND HANDING



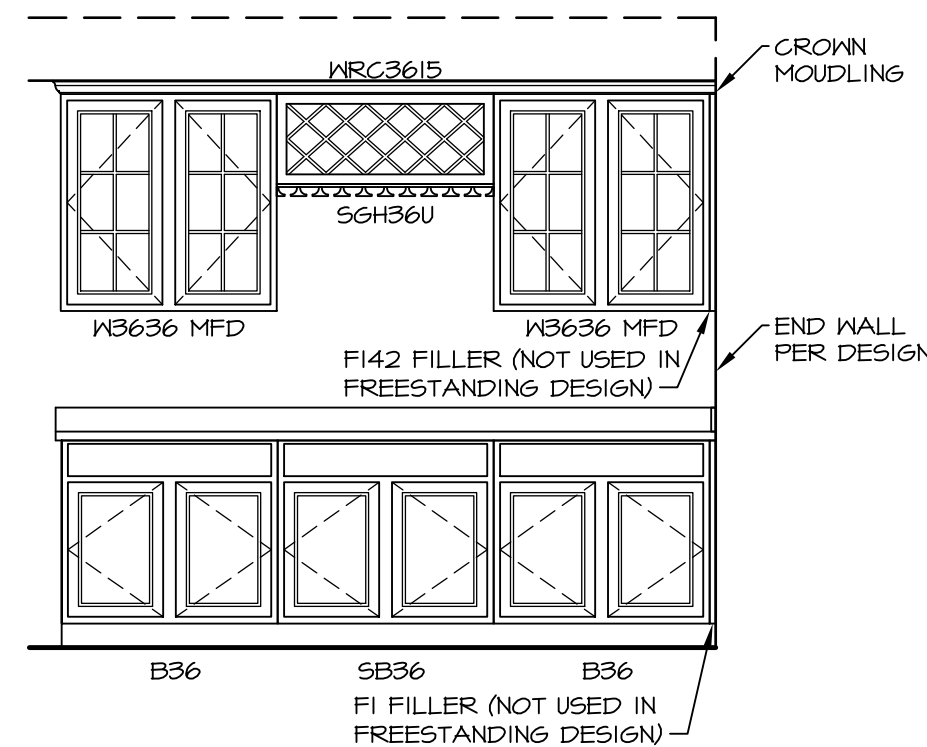
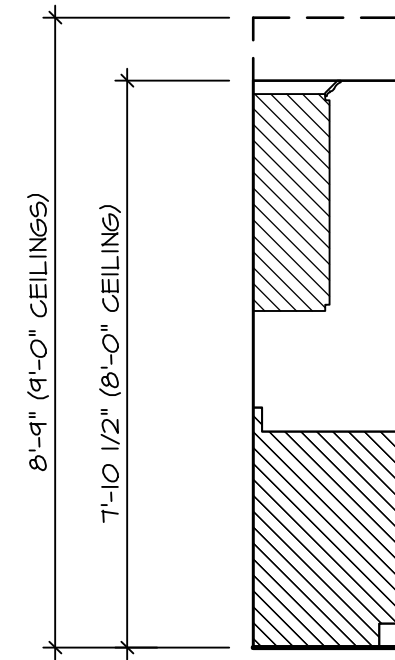
**KITCHEN CABINET  
PLAN KC - 1900**

2  
IT-3b SCALE: 3/8" = 1'-0"

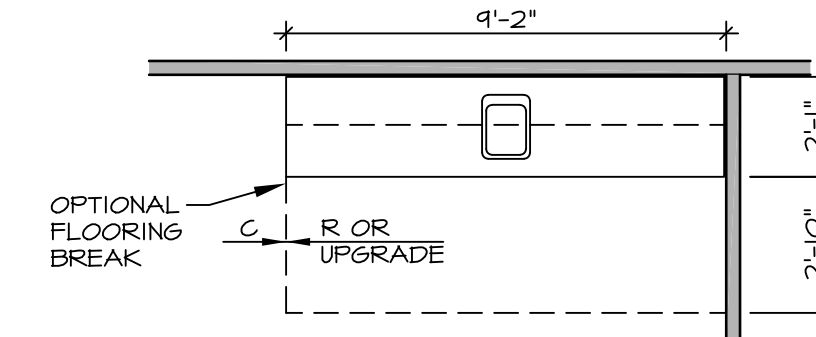


**KITCHEN COUNTERTOP  
PLAN KT - 1900**

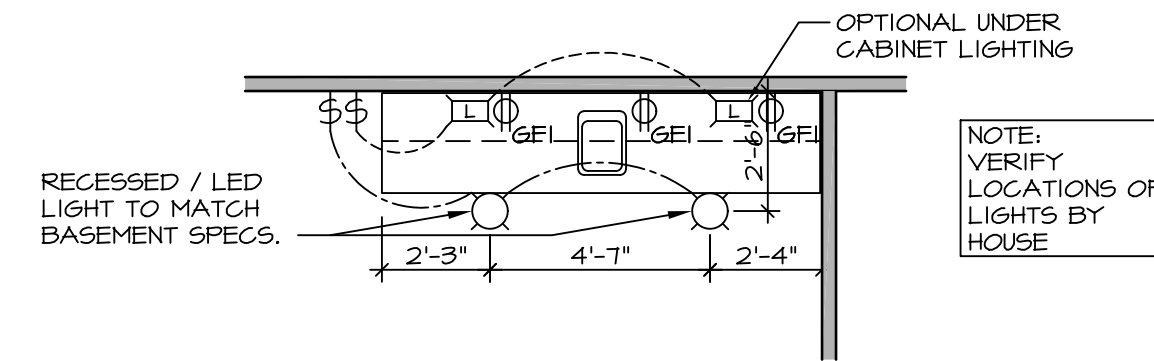
6  
IT-3b SCALE: 3/8" = 1'-0"



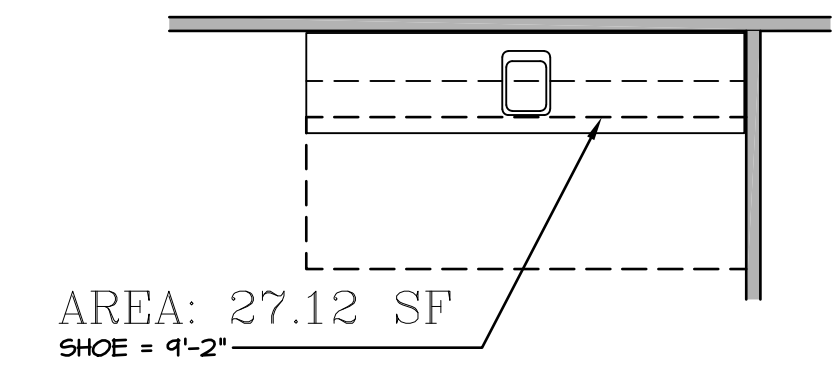
3  
IT-3b **ELEVATION "A"**  
SCALE: 3/8" = 1'-0"



4  
IT-3b **FLOOR PLAN**  
SCALE: 1/4" = 1'-0"



7  
IT-3b **FLOOR PLAN ELECTRICAL LAYOUT**  
SCALE: 1/4" = 1'-0"



5  
IT-3b **FLOORING PLAN**  
SCALE: 1/4" = 1'-0"

1  
IT-3b **WET BAR DETAILS**  
SCALE: VARIES \* SHOWN AS END WALL DESIGN

SHEET NO. <b>IT-3b</b>	MODEL <b>STANDARD DETAILS</b>	SET NO. NVR	REV. NO.	DATE	REMARKS
		VERSION	1	5/17/17	56A - REVISED FLOOR PLAN DIMENSIONS TO MATCH COUNTERTOP DIMENSIONS
DRAWING TITLE	INTERIOR TRIM DETAILS	DRAWN BY	2	5/23/17	56A - REMOVED COUNTERTOP INFORMATION FROM 2/IT-3b
WET BAR DETAILS - BACK BAR (RYAN ONLY)		DATE:	3	6/5/17	56A - REMOVED U.C. REF. AND TURNED OFF FLOORING SPACES
OPTION DESCRIPTION		OPTION	4	9/14/17	EBP - ADDED NOTE TO RECESSED LIGHT / LED LIGHT IN NET BAR

**NVR**  
NVR, Inc.  
Architectural Services  
Architects  
5285 West Annapolis Avenue, Suite 100  
Frederick, MD 21703

J:\Dwg\NVR\Interior Trim\113.dwg 09/14/17 - 7:11 am