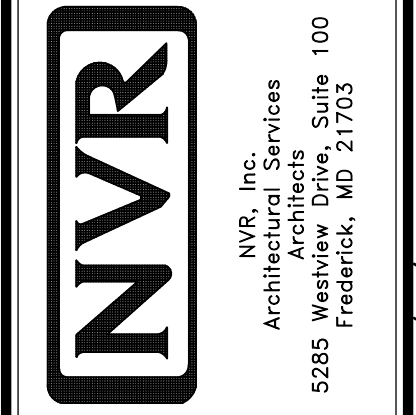


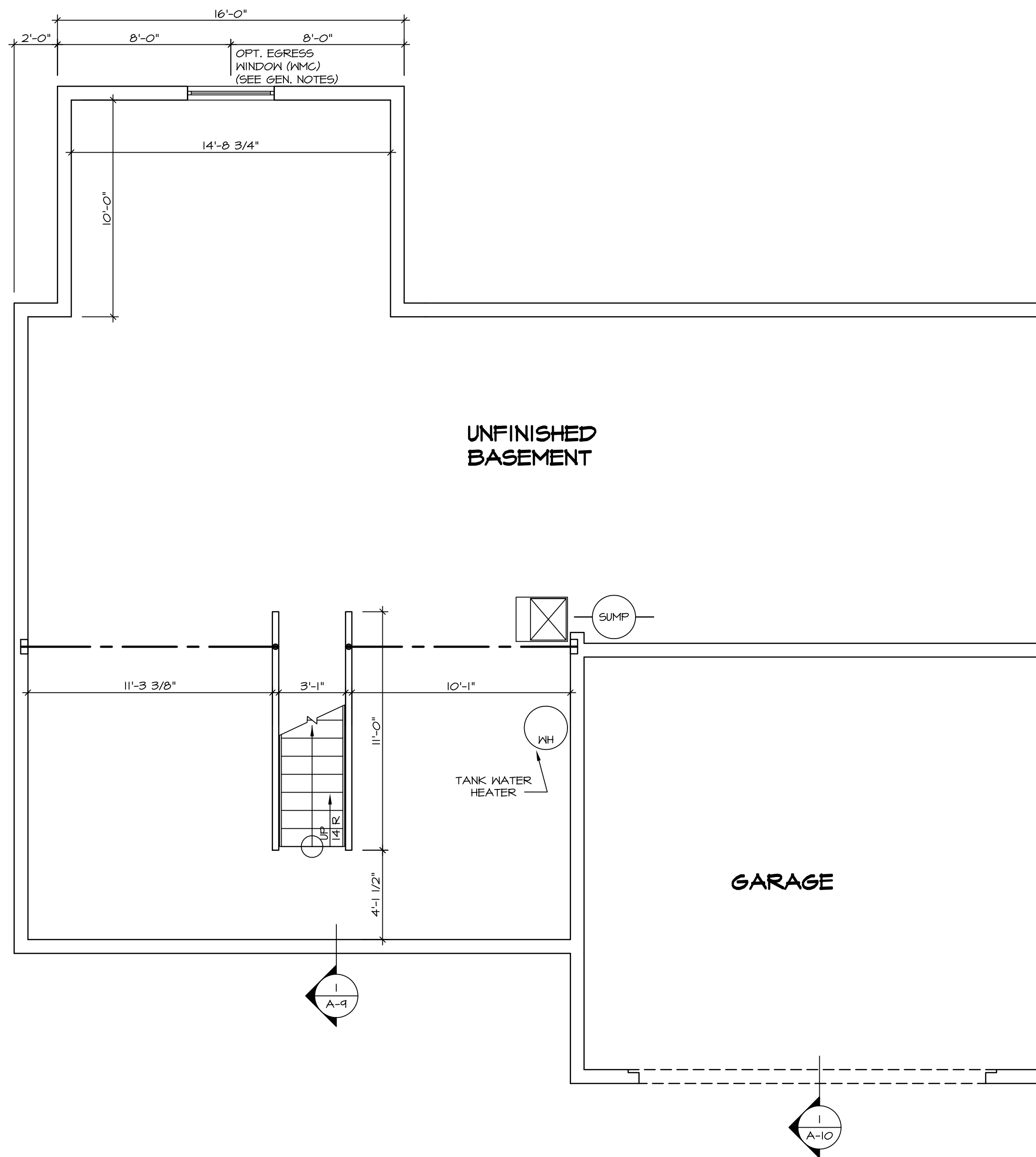
1 PLUMBING PLAN  
 A-5 SCALE: 1/4" = 1'-0"

SHEET NO. <b>A-5</b>	MODEL <b>PALERMO</b>	SET NO. <b>PALOO</b>
OPTION DESCRIPTION <b>48</b>	VERSION <b>03</b>	DRAWN BY <b>PALERMO</b>
	DATE:	OPTION



NVR, Inc., owner, expressly reserves its copyright in these plans. These plans are not to be reproduced, changed, copied, or otherwise used in any way without the written consent of NVR, Inc.

REV. NO.	DATE	REMARKS



LEGEND	
	BEARING WALL
	NON BEARING WALL
	INDICATES BEARING FROM POINT-LOAD ABOVE
	JACKS
	BEAM/HEADER
	PAD FOOTING
	STEEL COLUMN
	PORTAL FRAME
	JOIST/TRUSS
	LVL
	ENGINEERING PAGE NUMBER

SEE FC DETAILS FOR FRAMING CONNECTORS

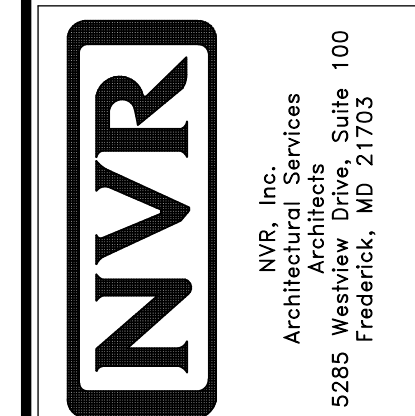
- FLOOR PLAN NOTES**
1. ALL HEADERS ARE (2) 2x6 w/ 2x4 WALLS OR (3) 2x6 w/ 2x6 WALLS, UNLESS OTHERWISE NOTED.
  2. ALL HEADERS TO HAVE (1) 2x4 OR 2x6 JACK EACH END, UNLESS OTHERWISE NOTED.
  3. ALL EXTERIOR WALLS TO BE 4" AND ALL INTERIOR WALLS TO BE 3 1/2", UNLESS OTHERWISE NOTED.
  4. HATCHED AREAS INDICATE DROPPED CEILINGS. ALL DROPPED CEILINGS ARE 12" UNLESS OTHERWISE NOTED.
  5. SEE "BRACED WALL PANEL DETAIL SHEET" FOR SPECIAL WALL FRAMING LOCATIONS AND HEADER SIZES, IF APPLICABLE.
  6. SEE STANDARD DETAIL CATEGORY "IT" SHEET(S) FOR INTERIOR TRIM DETAILS.
  7. SEE ARCHITECTURAL DETAIL SHEET "AD" FOR HOUSE SPECIFIC INTERIOR TRIM OPTION TABLE.
  8. ALL WINDOWS HAVE 7'-0 1/2" HEADER HEIGHT UNLESS OTHERWISE NOTED.
  9. ALL CASED OPENINGS AT T-11", UNLESS OTHERWISE NOTED.

- GYPSUM NOTES**
- AT GARAGE:  
GYPSUM BOARD AT COMMON WALLS, CEILING, BEAM WRAPS AND SUPPORTS PER STANDARD DETAIL FA-1(b) FIRE ASSEMBLIES OR AS REQUIRED BY LOCAL CODE.
- AT STAIRS:  
1/2" GYPSUM BOARD AT UNDERSIDE OF STAIRS AND WALLS IN CLOSET

**BASEMENT FLOOR PLAN**  
SCALE: 1/4" = 1'-0"

SHEET NO.	MODEL	SET NO.	VERSION	DRAWN BY	DATE:	OPTION	DRAWING TITLE	OPTION DESCRIPTION	REMARKS
A-6	PALERMO	03	03				BASEMENT FLOOR PLAN		
51									

NVR, Inc., owner, expressly reserves its common law copyright in these plans. These plans are not to be reproduced, changed, adapted in any way, or otherwise used, without the prior written consent of NVR, Inc.



FIRST FLOOR JACK SCHEDULE				
IDENTIFIER	DESCRIPTION	OPTIONS	ENG. NUM.	REMARKS
J101	JACK - (2) 2X4 SPF STUD GRADE		1072	
J102	JACK - (2) 2X4 SPF STUD GRADE		1072	
J106	JACK - (2) 2X4 SPF STUD GRADE		1012	
J107	JACK - (2) 2X4 SPF STUD GRADE		1012	
J108	JACK - (2) 2X4 SPF STUD GRADE		1012	
J120	JACK - (4) 2X6 SPF STUD GRADE	MAA	1014	
J121	JACK - (3) 2X6 SPF STUD GRADE	MAA	1014	FIELD INSTALLED
J122	JACK - (3) 2X4 SPF STUD GRADE	SRM	1040	
J123	JACK - (3) 2X4 SPF STUD GRADE	SRM	1044	
J124	JACK - (3) 2X4 9P#1	ELD	1021	
J150	JACK - (3) 2X4 SPF STUD GRADE	GCF	1044	
J151	JACK - (3) 2X4 SPF STUD GRADE	GCF	1044	
J152	JACK - (2) 2X4 SPF STUD GRADE	GCFMAV	1044, 1131	CRIPPLES
J153	JACK - (2) 2X4 SPF STUD GRADE	GCFMAV	1044, 1131	CRIPPLES
J154	JACK - (2) 2X4 SPF STUD GRADE	GCF	1122	
J155	JACK - (2) 2X4 SPF STUD GRADE	GCF	1122	
J156	JACK - (2) 2X4 SPF STUD GRADE	GCF	1105	
J163	JACK - (3) 2X4 SPF STUD GRADE	EVM, MAV	1124	
J166	JACK - (3) 2X4 SPF STUD GRADE	EVM, MAV	1124	
J164	JACK - (3) 2X4 9P#1	ELD		

**LVL PLY TO PLY FASTENING SCHEDULE:**

1A - (2) FLY UP TO AND INCLUDING 1 7/8" TALL; FASTEN FLIES W/ (2) ROWS 16D NAILS AT 12" O.C.  
 2A - (2) FLY 14" TO AND INCLUDING 18" TALL (INCLUSIVE); FASTEN FLIES W/ (3) ROWS 16D NAILS AT 12" O.C.  
 3A - (2) FLY 20" TALL AND OVER; FASTEN FLIES W/ (4) ROWS 16D NAILS AT 12" O.C.  
 4A - (3) FLY UP TO AND INCLUDING 11 7/8" TALL; FASTEN FLIES W/ (2) ROWS 16D NAILS AT 12" O.C. FROM EACH SIDE  
 5A - (3) FLY 14" TO AND INCLUDING 18" TALL (INCLUSIVE); FASTEN FLIES W/ (3) ROWS 16D NAILS AT 12" O.C. FROM EACH SIDE  
 6A - (3) FLY 20" TALL AND OVER; FASTEN FLIES W/ (4) ROWS 16D NAILS AT 12" O.C. FROM EACH SIDE

FIRST FLOOR BEAM/HEADER SCHEDULE					
IDENTIFIER	DESCRIPTION	LENGTH	OPTIONS	ENG. NUM.	REMARKS
B101-3	LVL - 16	14'-4 1/2"	MAA	1014	5A, FIELD INSTALL
B103	BEAM STEEL - W12X35	22'-3 1/2"	ELD, MAV	1128	
B104	BEAM STEEL - W12X14	22'-3 1/2"	ELD, EVM, MAV	1124	
B107-2	LVL - 14	17'-4"	MAV	1050, 1051	2A, FIELD INSTALL
PF104-2	EXT HEADER - 2X12 - 2 PLY	11'-4"	GCF	1054, 1148	2-PLY, FIELD INSTALL

LEGEND	
[Symbol]	BEARING WALL
[Symbol]	NON BEARING WALL
[Symbol]	INDICATES BEARING FROM POINT-LOAD ABOVE
[Symbol]	JACKS
[Symbol]	BEAM/HEADER
[Symbol]	PAD FOOTING
[Symbol]	STEEL COLUMN
[Symbol]	PORTAL FRAME
[Symbol]	JOIST/TRUSS
[Symbol]	LVL
[Symbol]	ENGINEERING PAGE NUMBER

STEEL COLUMN SCHEDULE					
IDENTIFIER	STYLE	HEIGHT	OPTIONS	ENG. NUM.	REMARKS
C101	STANCHION - 3 IN SCHED 40	9'-0 11/16"	FBA	1057, 1133, 1128	
C103	STANCHION - 3 IN SCHED 40	9'-0 11/16"	FBA	1057, 1133, 1128	

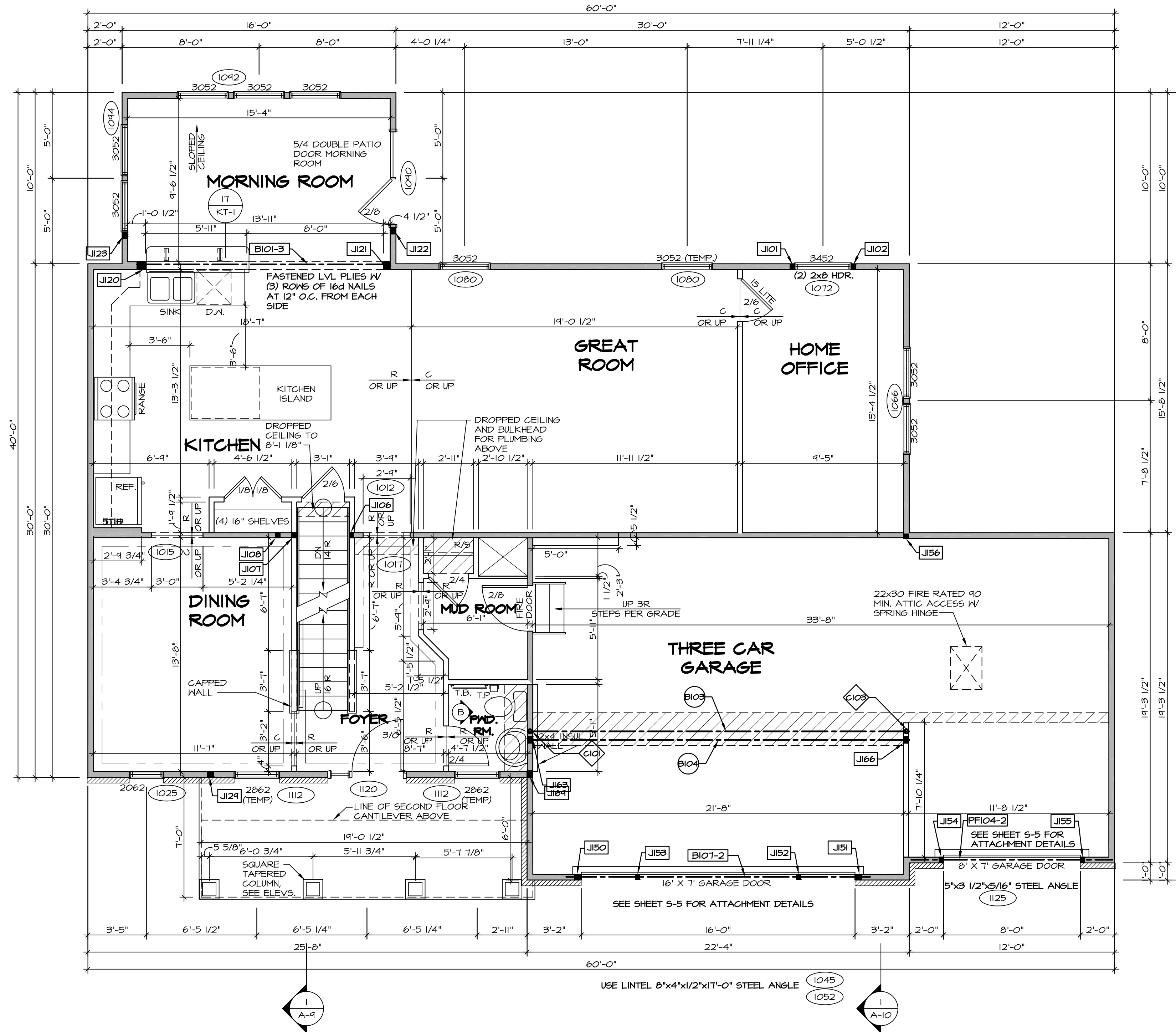
**FLOOR PLAN NOTES**

- ALL HEADERS ARE (2) 2x6 W/ 2x4 WALLS OR (3) 2x6 W/ 2x6 WALLS, UNLESS OTHERWISE NOTED.
- ALL HEADERS TO HAVE (1) 2x4 OR 2x6 JACK AND KING STUD EACH END, UNLESS OTHERWISE NOTED.
- ALL EXTERIOR WALLS TO BE 4" W/ OSB OR 3 1/2" W/ T-PLY, ALL INTERIOR WALLS TO BE 3 1/2", UNLESS OTHERWISE NOTED.
- HATCHED AREAS INDICATE DROPPED CEILINGS. ALL DROPPED CEILINGS ARE 12" UNLESS OTHERWISE NOTED.
- SEE 'BRACED WALL PANEL DETAIL SHEET' FOR SPECIAL WALL FRAMING LOCATIONS AND HEADER SIZES, IF APPLICABLE.
- SEE STANDARD DETAIL CATEGORY 'IT' SHEET(S) FOR INTERIOR TRIM DETAILS.
- SEE ARCHITECTURAL DETAIL SHEET 'AD' FOR HOUSE SPECIFIC INTERIOR TRIM OPTION TABLE.
- ALL WINDOWS HAVE 7'-0" 1/2" HEADER HEIGHT UNLESS OTHERWISE NOTED.
- ALL HEADERS IN NON-BEARING WALLS SHALL BE A SINGLE FLAT 2X4 OR 2X6 ATTACHED TO CRIPPLES ABOVE, UNLESS OTHERWISE NOTED.

**GYPSUM NOTES**

**AT GARAGE:**  
 GYPSUM BOARD AT COMMON WALLS, CEILING, BEAM WRAPS AND SUPPORTS PER STANDARD DETAIL FA-1(b) FIRE ASSEMBLIES OR AS REQUIRED BY LOCAL CODE.

**AT STAIRS:**  
 1/2" GYPSUM BOARD AT UNDERSIDE OF STAIRS AND WALLS IN CLOSET



**FIRST FLOOR PLAN**  
 SCALE: 1/4" = 1'-0"

REV. NO.	DATE	DESCRIPTION
1	09/04/16	TH - DRAWING ALIGNMENT
2	07/12/17	SLS - T-PLY CONVERSION PROJECT

NVR, Inc., owner, expressly reserves its copyright in the common law plans. These plans are not to be reproduced, changed, copied, or otherwise used without the prior written consent of NVR, Inc.

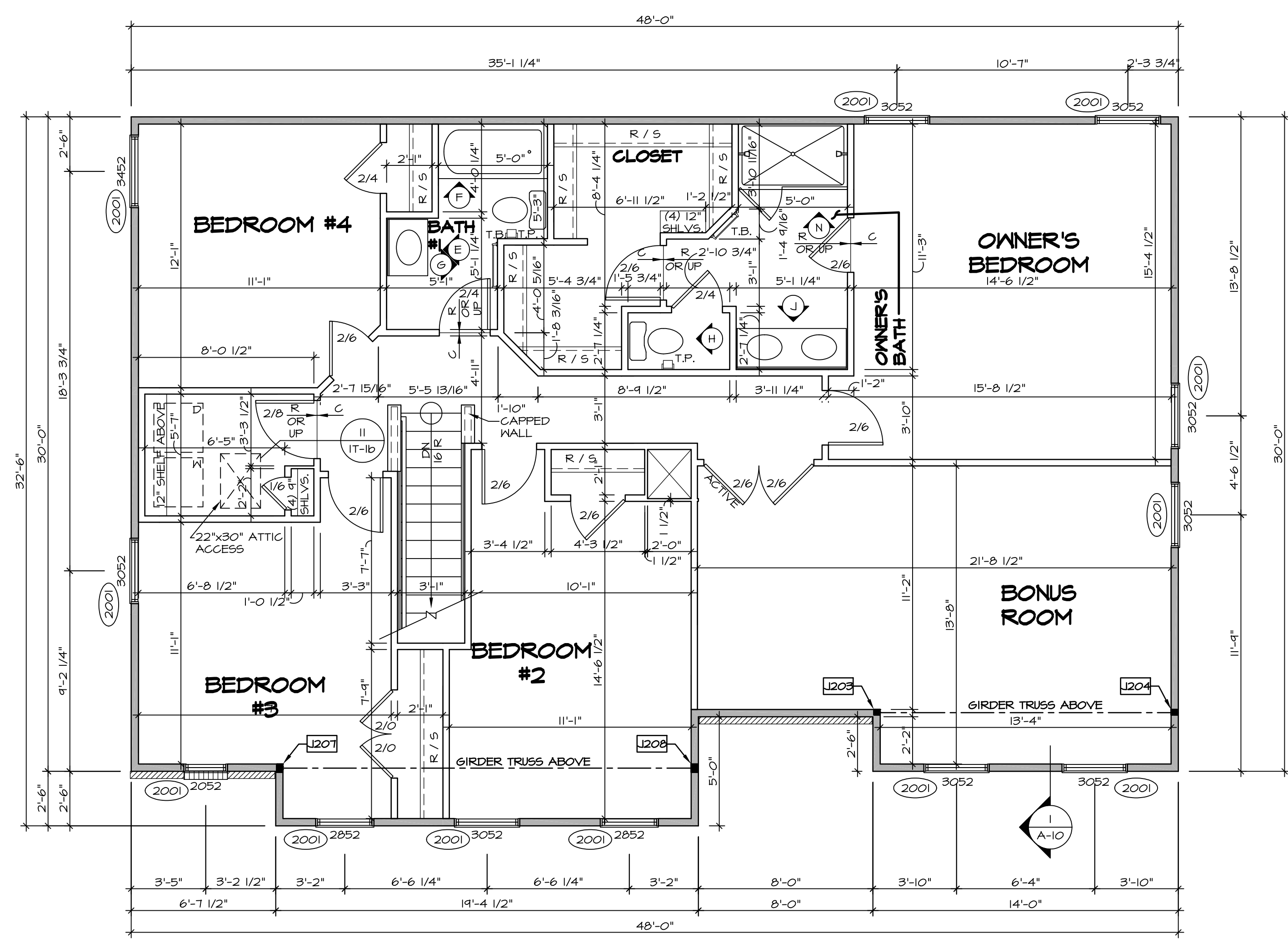
**NVR**  
 NVR, Inc.  
 Architectural Services  
 Suite 100  
 5285 Washburn Rd  
 Frederick, MD 21703

SHEET NO.	MODEL	SET NO.	VERSION	DRAWN BY	DATE:	OPTION
A-7	PALERMO	03	03	FIRST FLOOR PLAN		
53						

SECOND FLOOR JACK SCHEDULE				
IDENTIFIER	DESCRIPTION	OPTIONS	ENG. NUM.	REMARKS
J203	JACK - (2) 2X4 SPM	MAY	2011	EXTEND JACKS THROUGH TOP PLATE
J204	JACK - (2) 2X4 SPM	MAY	2011	EXTEND JACKS THROUGH TOP PLATE
J207	JACK - (3) 2X4 SPM	ELD	2011	EXTEND JACKS THROUGH TOP PLATE
J208	JACK - (3) 2X4 SPM	ELD	2011	EXTEND JACKS THROUGH TOP PLATE

LEGEND	
	BEARING WALL
	NON BEARING WALL
	INDICATES BEARING FROM POINT-LOAD ABOVE
	JACKS
	BEAM/HEADER
	PAD FOOTING
	STEEL COLUMN
	PORTAL FRAME
	JOIST/TRUSS
	LVL
	ENGINEERING PAGE NUMBER

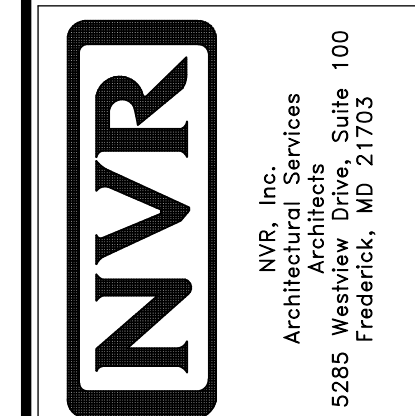
- FLOOR PLAN NOTES**
- ALL HEADERS ARE (2) 2x6 w/ 2x4 WALLS OR (3) 2x6 w/ 2x6 WALLS, UNLESS OTHERWISE NOTED.
  - ALL HEADERS TO HAVE (1) 2x4 OR 2x6 JACK AND KING STUD EACH END, UNLESS OTHERWISE NOTED.
  - ALL EXTERIOR WALLS TO BE 4" w/ OSB OR 3 1/2" w/ T-PLY, ALL INTERIOR WALLS TO BE 3 1/2", UNLESS OTHERWISE NOTED.
  - HATCHED AREAS INDICATE DROPPED CEILINGS. ALL DROPPED CEILINGS ARE 12" UNLESS OTHERWISE NOTED.
  - SEE "BRACED WALL PANEL DETAIL SHEET" FOR SPECIAL WALL FRAMING LOCATIONS AND HEADER SIZES, IF APPLICABLE.
  - SEE STANDARD DETAIL CATEGORY "IT" SHEET(S) FOR INTERIOR TRIM DETAILS.
  - SEE ARCHITECTURAL DETAIL SHEET "AD" FOR HOUSE SPECIFIC INTERIOR TRIM OPTION TABLE.
  - ALL WINDOWS HAVE 7'-0 1/2" HEADER HEIGHT UNLESS OTHERWISE NOTED.
  - ALL HEADERS IN NON-BEARING WALLS SHALL BE A SINGLE FLAT 2x4 OR 2x6 ATTACHED TO GRIPPLES ABOVE, UNLESS OTHERWISE NOTED.



**SECOND FLOOR PLAN**  
SCALE: 1/4" = 1'-0"

SHEET NO.	MODEL	SET NO.	VERSION	DRAWN BY	DATE	OPTION	REMARKS
A-8	PALERMO	03	03				
60							

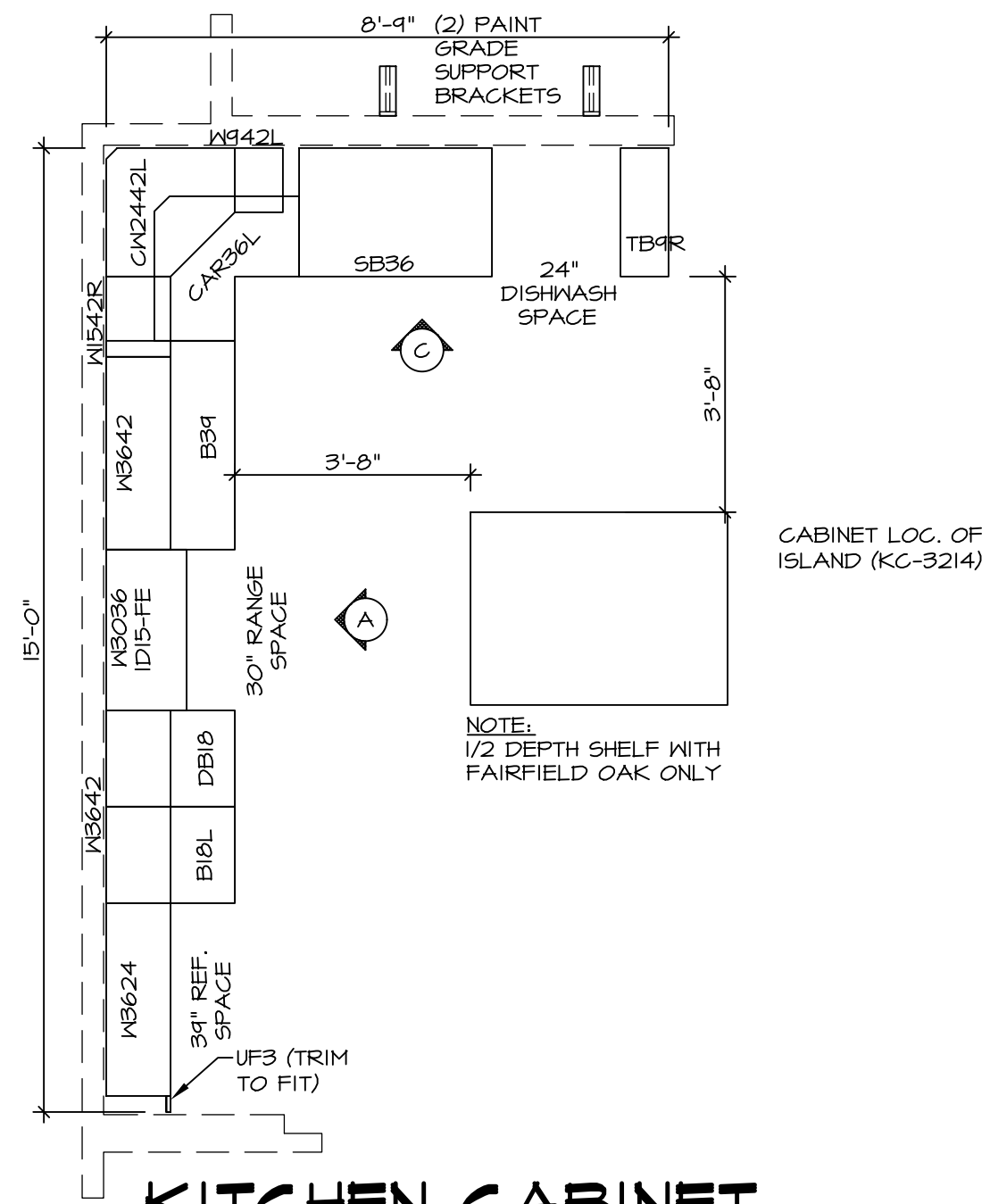
NVR, Inc., owner, expressly reserves the copyright in these plans. These plans are not to be reproduced, changed, adapted in any way, or used for any other project without the written consent of NVR, Inc.



SET NO. PALOO  
VERSION 03  
DRAWN BY  
DATE:  
OPTION

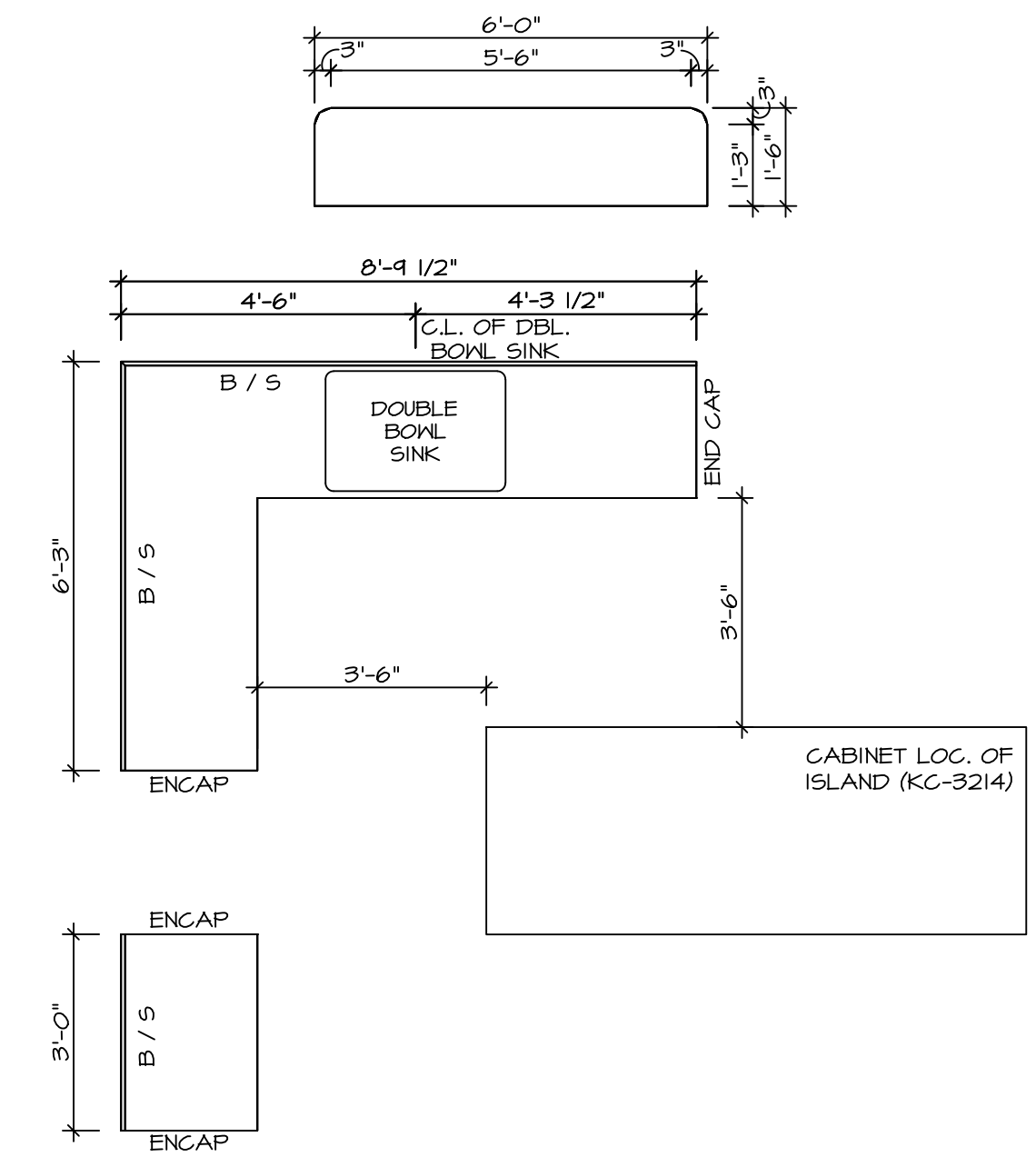
MODEL PALERMO  
DRAWING TITLE SECOND FLOOR PLAN  
OPTION DESCRIPTION

C:\NVR\Solves\PALERMO\_PALOO\_03\DC1-B1-022A\754041\Sheets\Lot\_Spec\60 A-8 PLN2.LS.dwg 04/13/18 - 3:31 pm



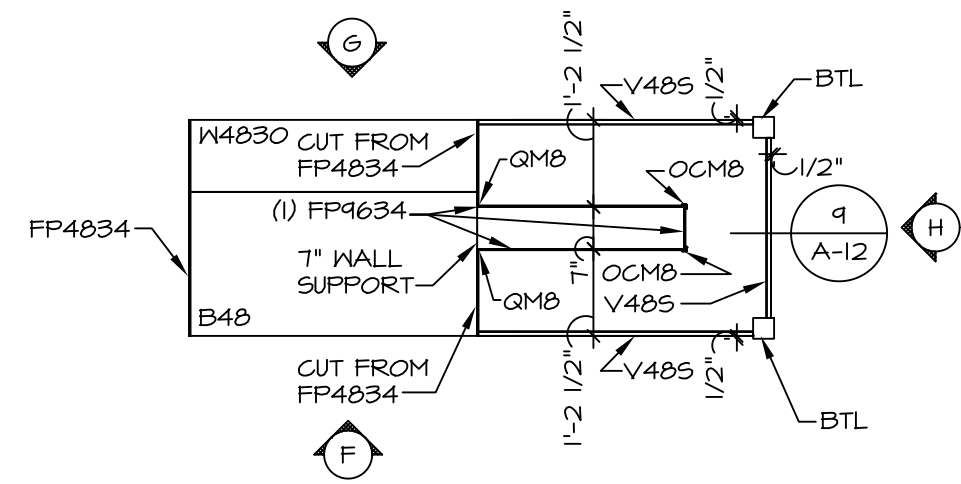
**KITCHEN CABINET  
PLAN-KC-2862**

3  
A-12 SCALE: 3/8" = 1'-0" STANDARD KITCHEN MORNING ROOM



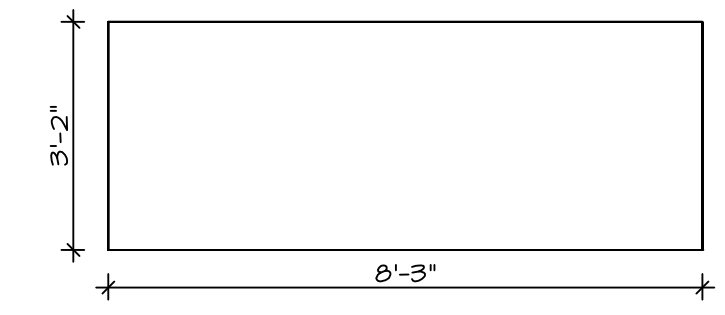
**KITCHEN COUNTERTOP  
PLAN-KT-2862**

4  
A-12 SCALE: 3/8" = 1'-0" STANDARD KITCHEN MORNING ROOM



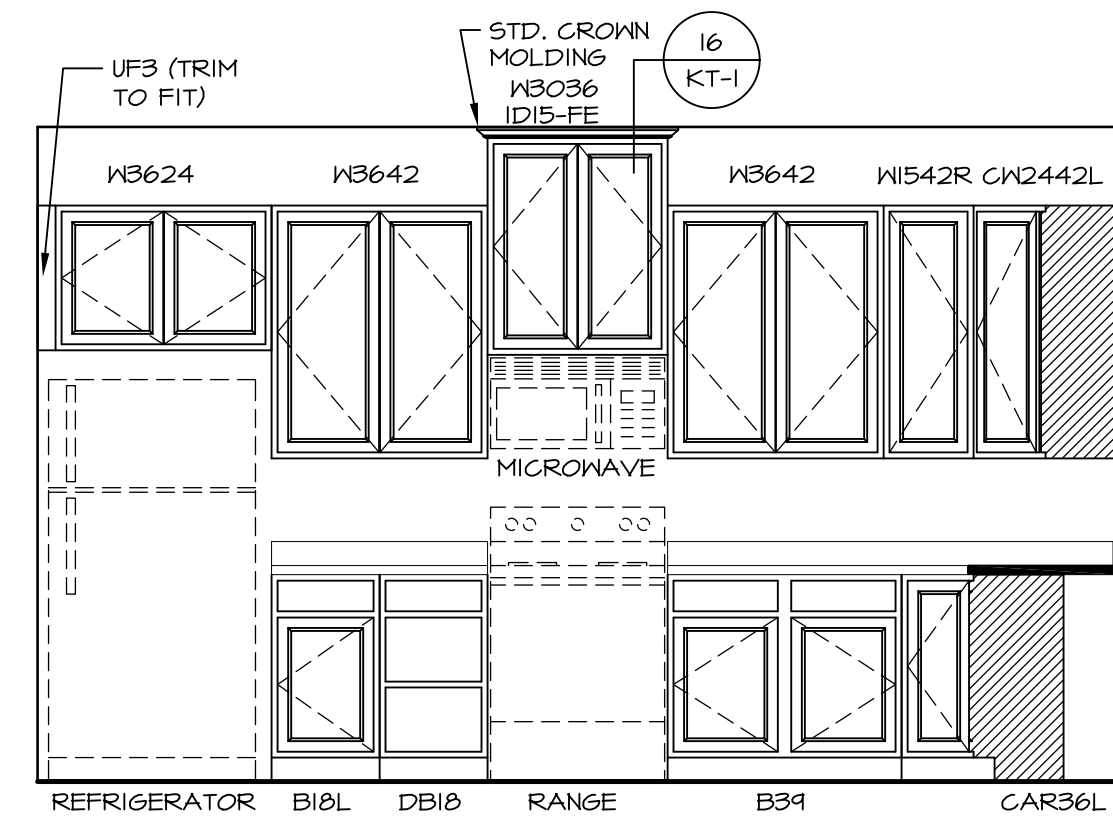
**KITCHEN CABINET  
PLAN-KC-3214**

7  
A-12 SCALE: 3/8" = 1'-0" GOURMET ISLAND

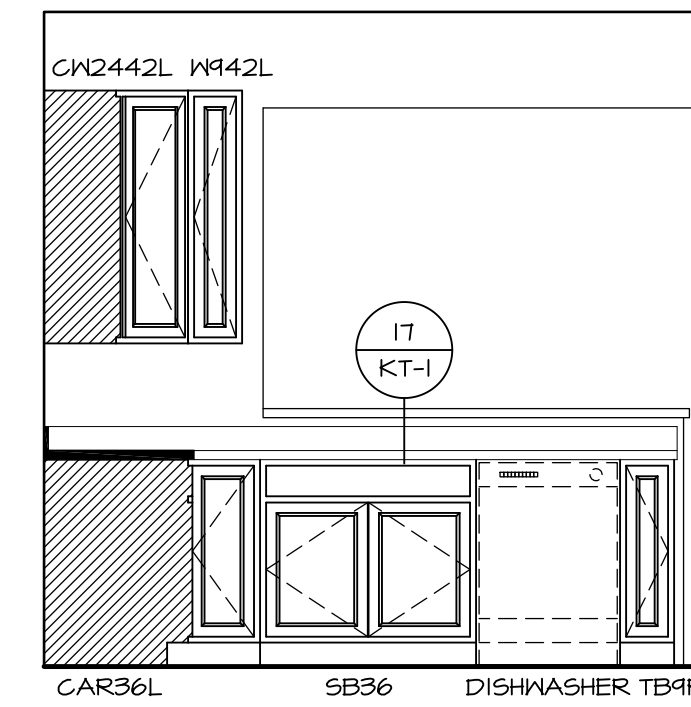


**KITCHEN COUNTERTOP  
PLAN-KT-3214**

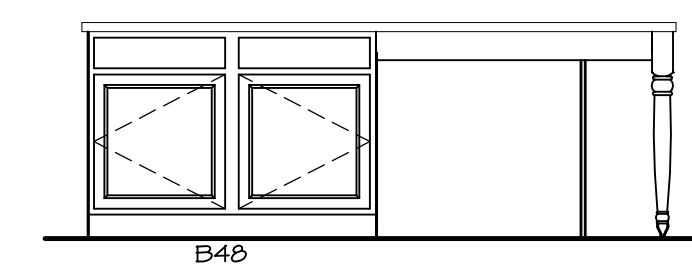
8  
A-12 SCALE: 3/8" = 1'-0" GOURMET ISLAND



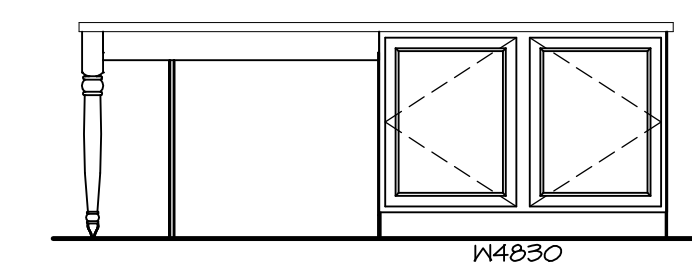
**A KITCHEN ELEVATION**  
SCALE: 3/8" = 1'-0"



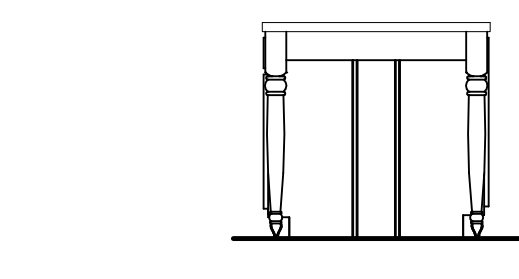
**C KITCHEN ELEVATION**  
SCALE: 3/8" = 1'-0"



**F KITCHEN ELEVATION**  
SCALE: 3/8" = 1'-0"



**G KITCHEN ELEVATION**  
SCALE: 3/8" = 1'-0"



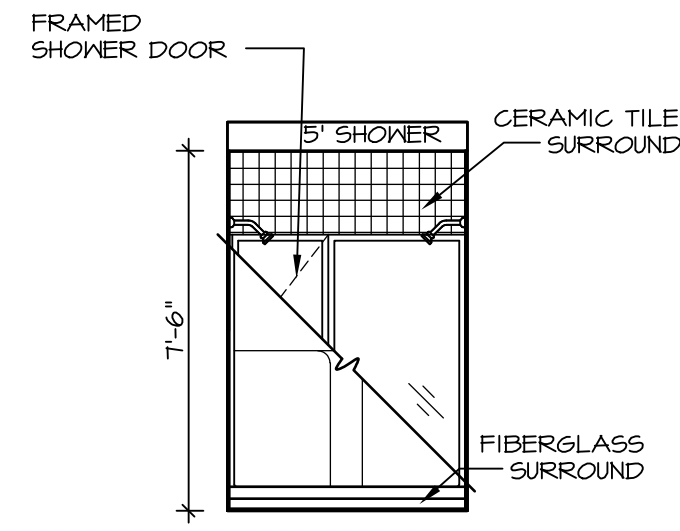
**H KITCHEN ELEVATION**  
SCALE: 3/8" = 1'-0"

SHEET NO.	MODEL	SET NO.	OPTION
A-12	PALERMO	03	03
	DRAWING TITLE	VERSION	DATE
		03	
	OPTION DESCRIPTION	DRAWN BY	DATE
		DATE	OPTION

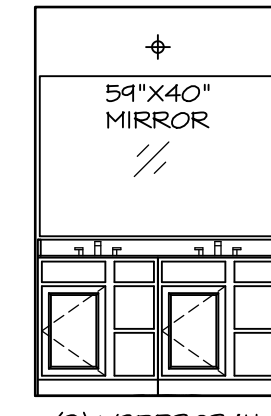
**NVR**  
NVR, Inc.  
Architectural Services  
5285 Westover Lane, Suite 100  
Frederick, MD 21703

NVR, Inc., owner, expressly reserves its copyright in these plans. These plans are not to be reproduced, changed, copied, or otherwise used in any way without the written consent of NVR, Inc.

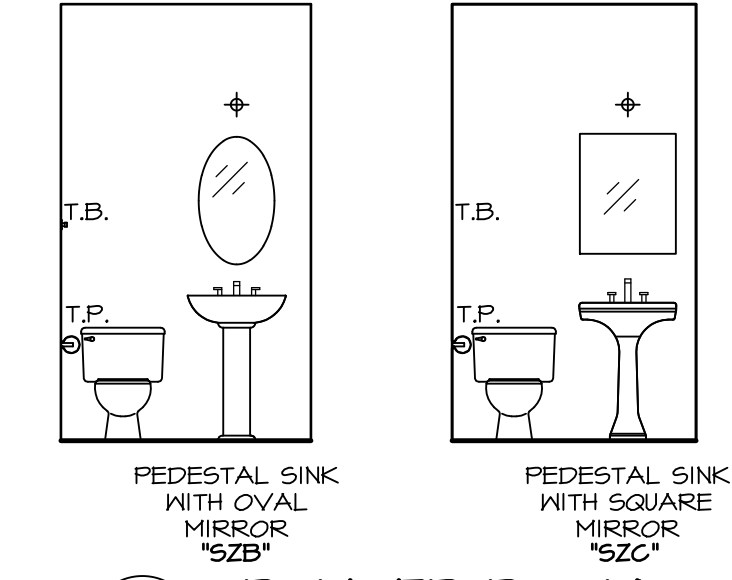
REV. NO.	DATE	REMARKS



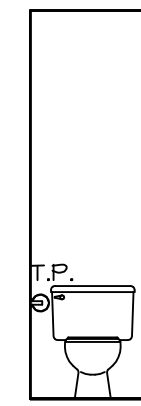
**N** OWNER'S BATH  
SCALE: 1/4" = 1'-0"



**J** OWNER'S BATH  
SCALE: 1/4" = 1'-0"



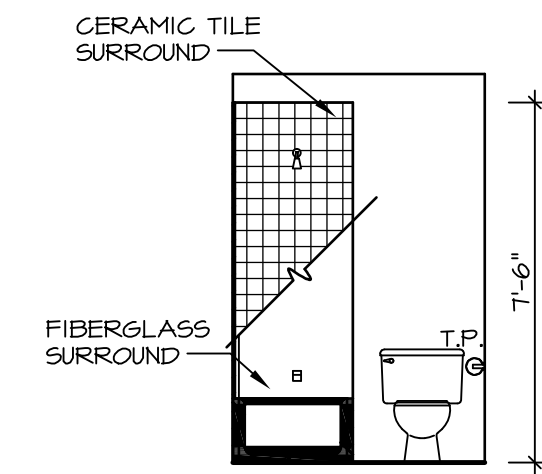
**B** POWDER ROOM  
SCALE: 1/4" = 1'-0"



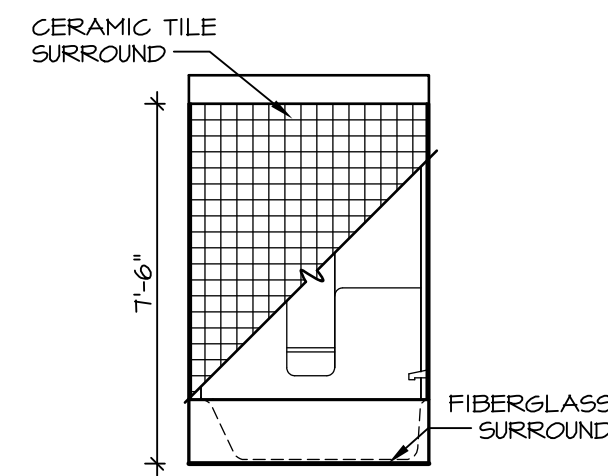
**H** OWNER'S BATH  
SCALE: 1/4" = 1'-0"



**E** BATH #1  
SCALE: 1/4" = 1'-0"



**G** BATH #1  
SCALE: 1/4" = 1'-0"



**F** BATH #1  
SCALE: 1/4" = 1'-0"

**NOTES:**

1. TEMPERED GLASS SHOWER ENCLOSURE WITH SWING DOOR OR OPTIONAL SLIDING DOOR BY DIVISION
2. TUB ACCESS PANELS PROVIDED AS NEEDED, ALL MATERIALS BY DIVISION
3. REFER TO SHEET IT-2 FOR TUB AND SHOWER DETAILS.
4. ALL V5DB24-42 DRAWERS TO BE SET ON RIGHT HAND.
5. BATH ELEVATIONS ARE SHOWN PER PLAN.

SHEET NO.	<b>A-13</b>
MODEL	<b>PALERMO</b>
DRAWING TITLE	BATH ELEVATIONS
OPTION DESCRIPTION	
72	

**NVR**  
NVR, Inc.  
Architectural Services  
Architects  
5285 Westpark Drive, Suite 100  
Frederick, MD 21703

NVR, Inc., owner, expressly reserves its copyright in these plans. These plans are not to be reproduced, changed, copied, or otherwise used in any way without the written consent of NVR, Inc.

REV. NO.	DATE	REMARKS
1	08/04/18	TM - DRAWING ALIGNMENT