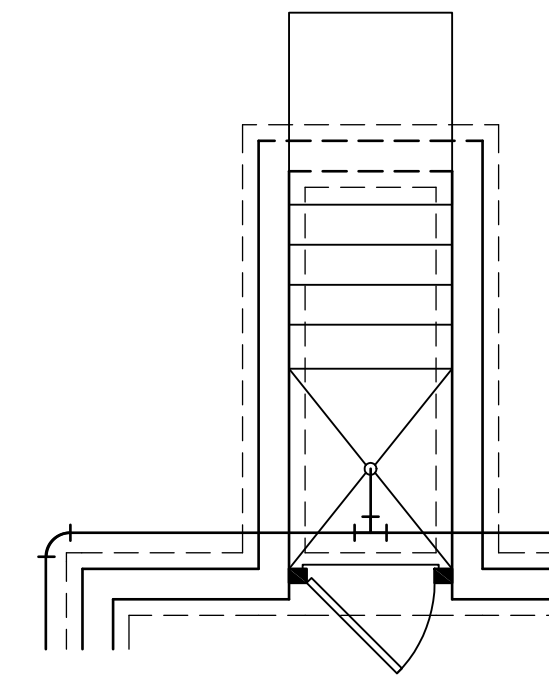
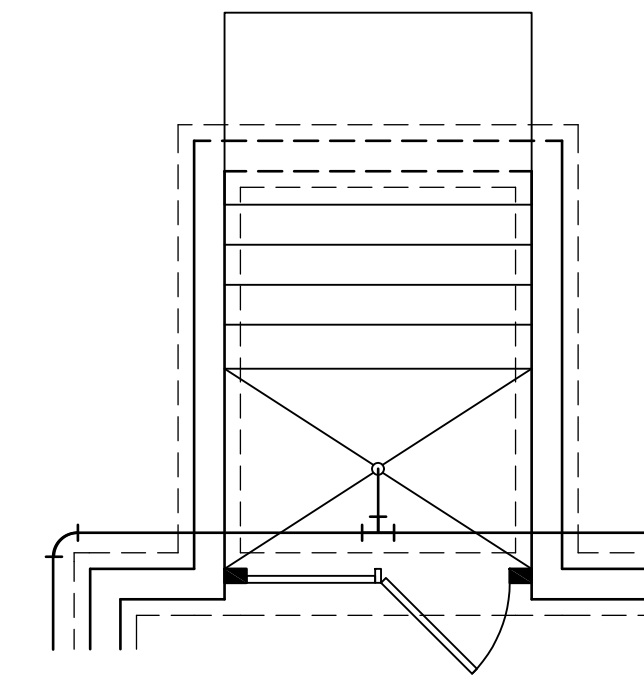


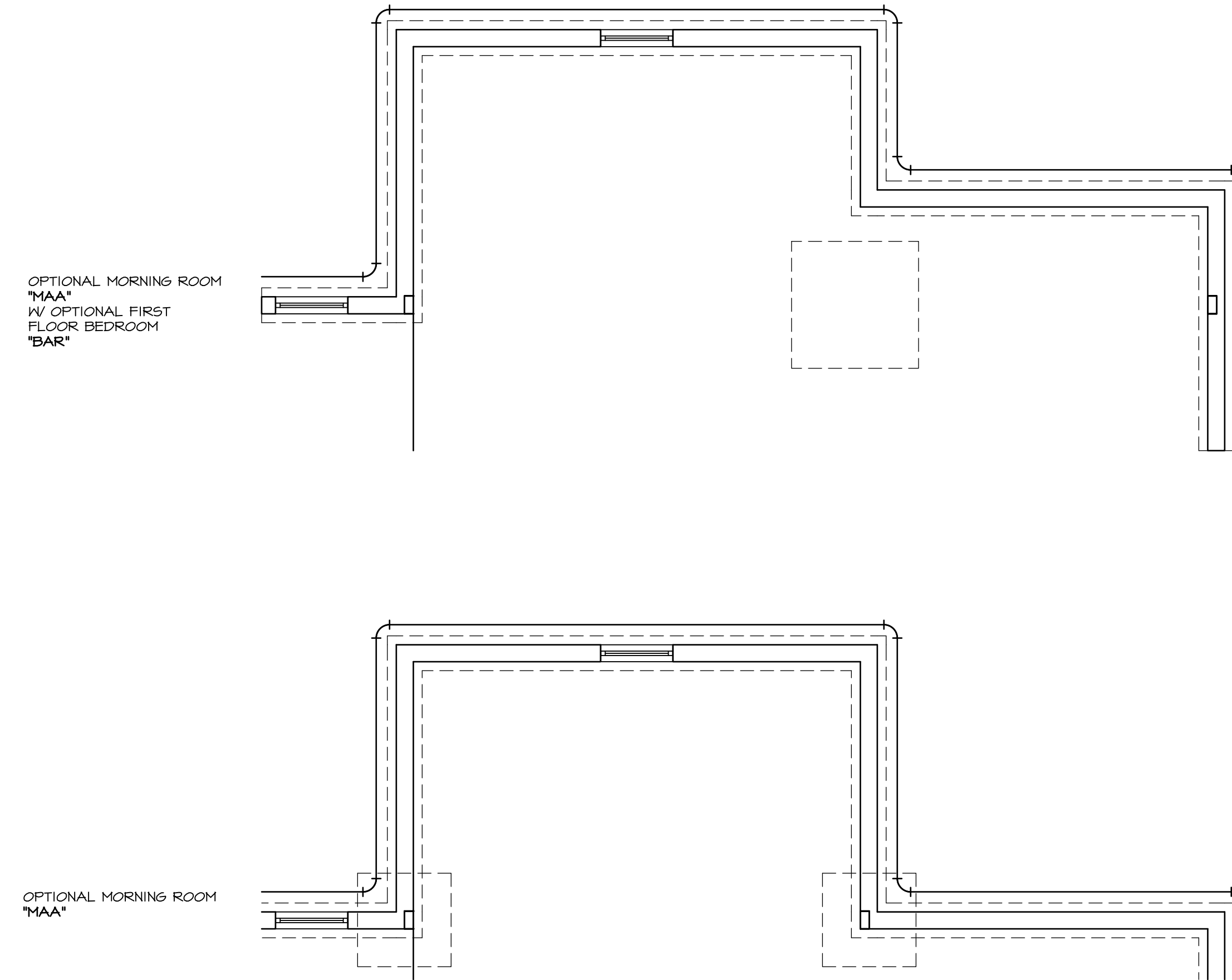
1 PLUMBING PLAN
A-4 SCALE: 1/4" = 1'-0"



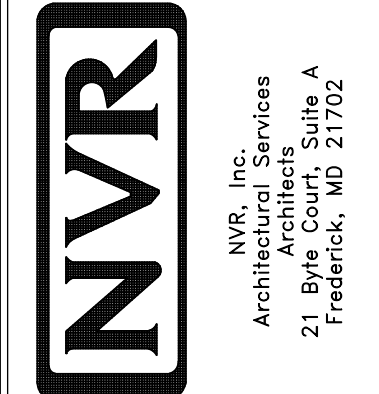
OPTIONAL SINGLE PATIO DOOR AREAWAY WALLED EXIT "DBC"



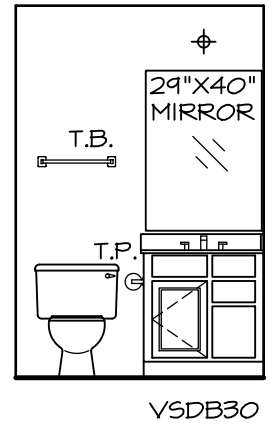
OPTIONAL DOUBLE PATIO DOOR AREAWAY WALLED EXIT "DQC"



SHEET NO. A-4	MODEL LONDON	SET NO. LPNOO	REVISIONS	REV. NO.	DATE	REMARKS
	DRAWING TITLE PLUMBING PLAN	VERSION 01	1 10/11/13	1	10/11/13	CSB - PROTOTYPE REVISIONS
	OPTION DESCRIPTION FULL BASEMENT	DRAWN BY CEL	2 10/25/13	2	10/25/13	CSB - CREATED VERSION 01
		DATE 5/28/13	3 4/30/14	3	4/30/14	CEL - PRAxis TIB CONVERSION
26		OPTION FBA	4 5/1/14	4	5/1/14	DSK - MET BAR PROJECT



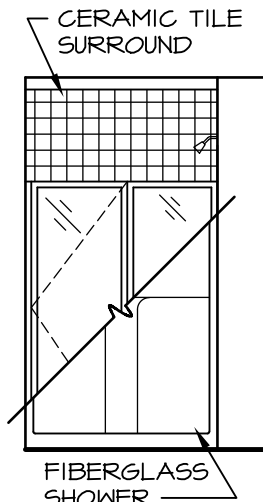
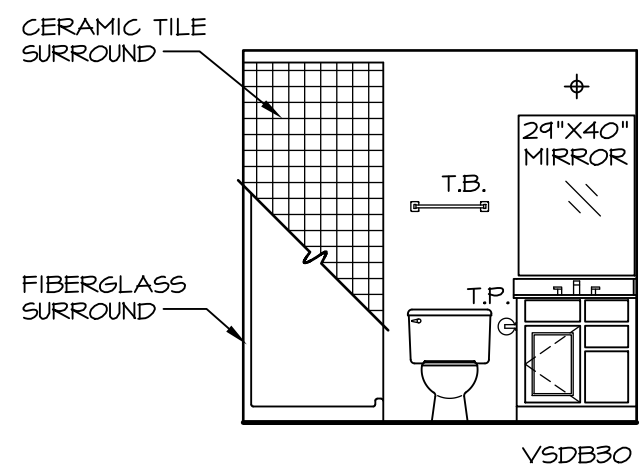
NVR, Inc., owner, expressly reserves its common law copyright and other property rights in these plans. These plans are not to be used, copied, reproduced, or otherwise disseminated without the expressed written consent of NVR, Inc.



NOTES:
 1. TEMPERED GLASS SHOWER ENCLOSURE.
 2. TUB ACCESS PANELS PROVIDED AS NEEDED, ALL MATERIALS BY DIVISION.
 3. REFER TO SHEET-10 (24x36) FOR TUB AND SHOWER DETAILS.

POWDER ROOM

SCALE: 1/4" = 1'-0"

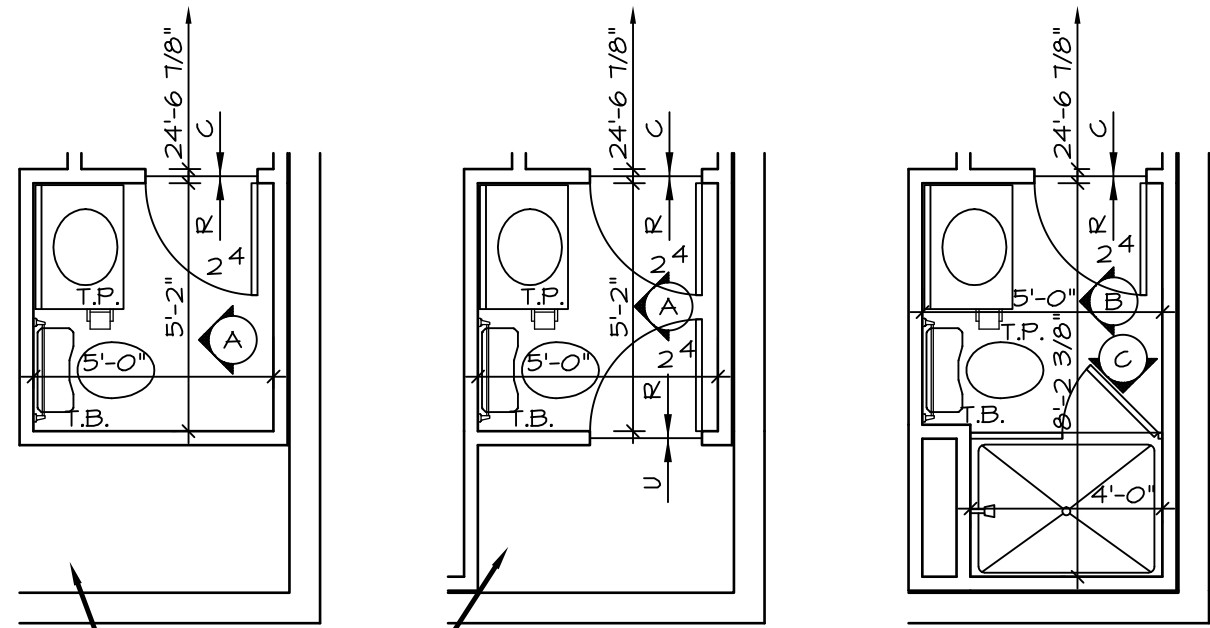


POWDER ROOM

SCALE: 1/4" = 1'-0"

POWDER ROOM

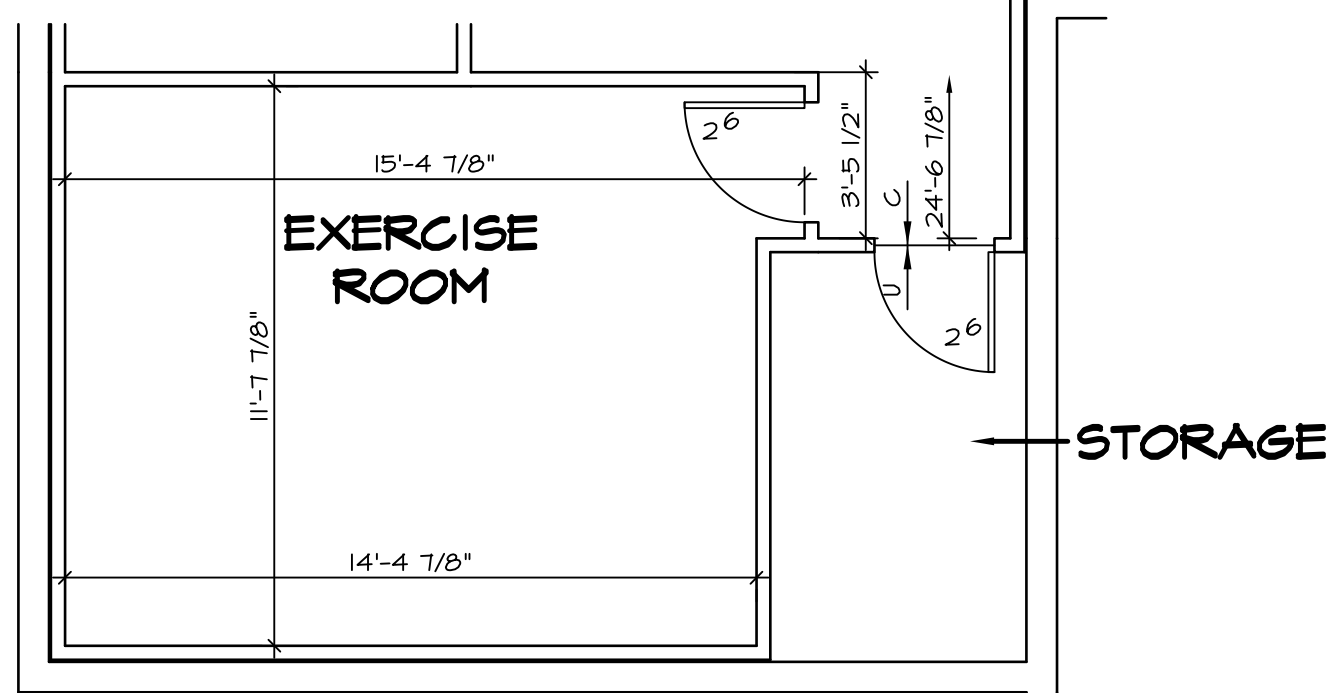
SCALE: 1/4" = 1'-0"



PARTIAL BASEMENT FLOOR PLAN

SCALE: 1/4" = 1'-0"

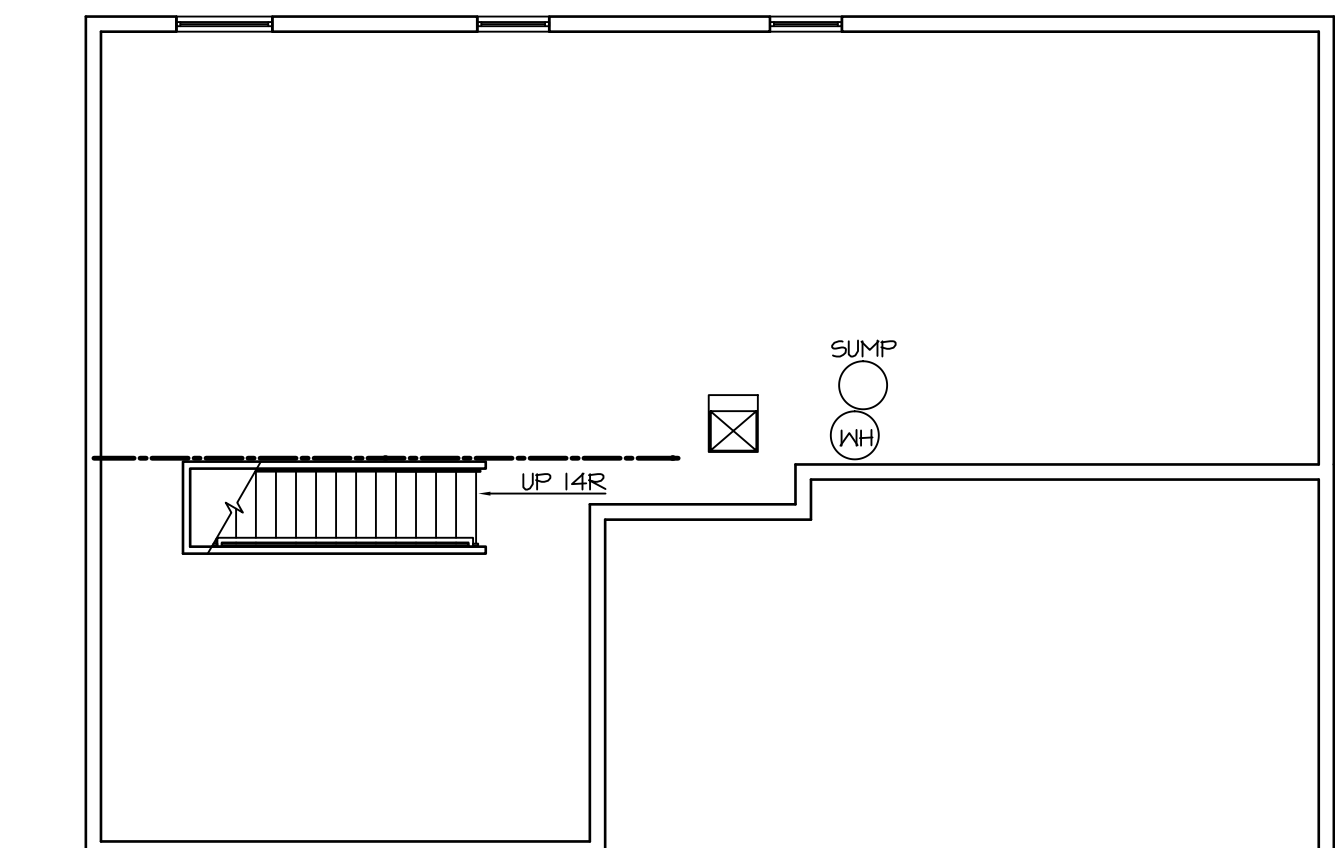
POWDER ROOM "APC"



PARTIAL BASEMENT FLOOR PLAN

SCALE: 1/4" = 1'-0"

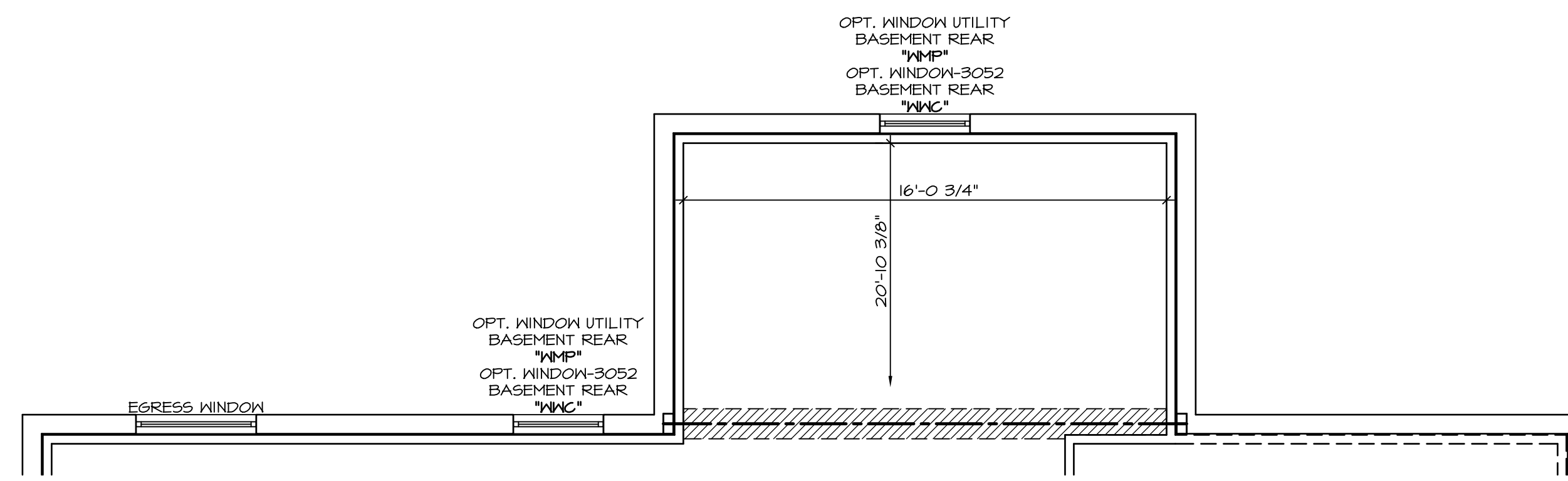
EXERCISE ROOM "MEJ"



UNFINISHED BASEMENT

SCALE: 1/8" = 1'-0"

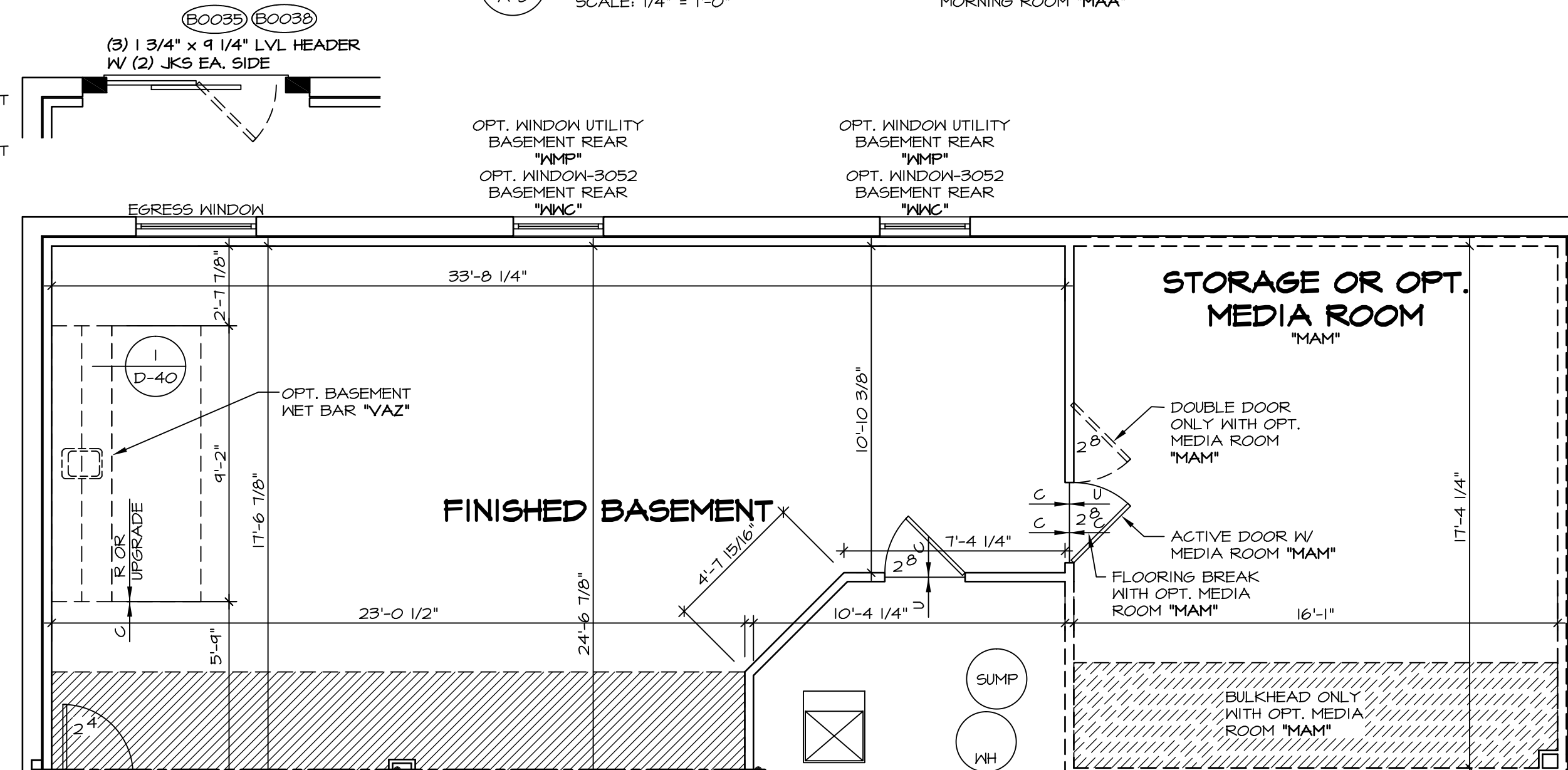
UNFINISHED BASEMENT "MEC"



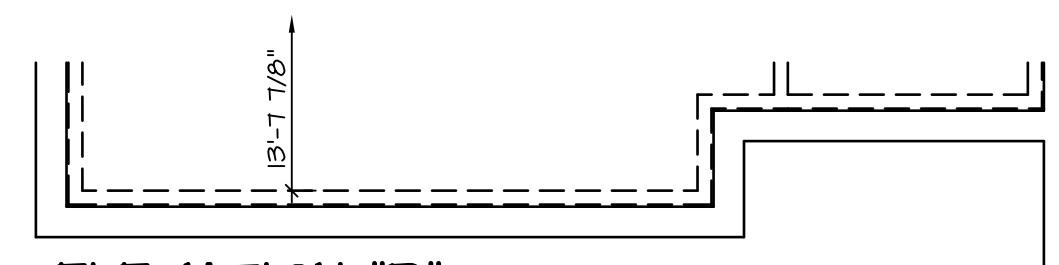
PARTIAL BASEMENT FLOOR PLAN

SCALE: 1/4" = 1'-0"

MORNING ROOM "MAA"



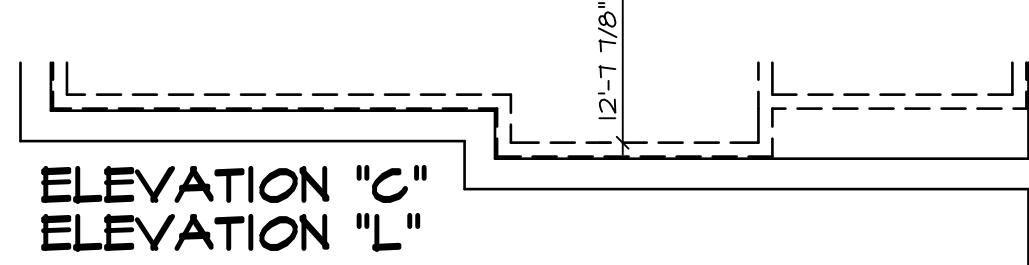
ELEVATION "A"



PARTIAL BASEMENT FLOOR PLAN

SCALE: 1/4" = 1'-0"

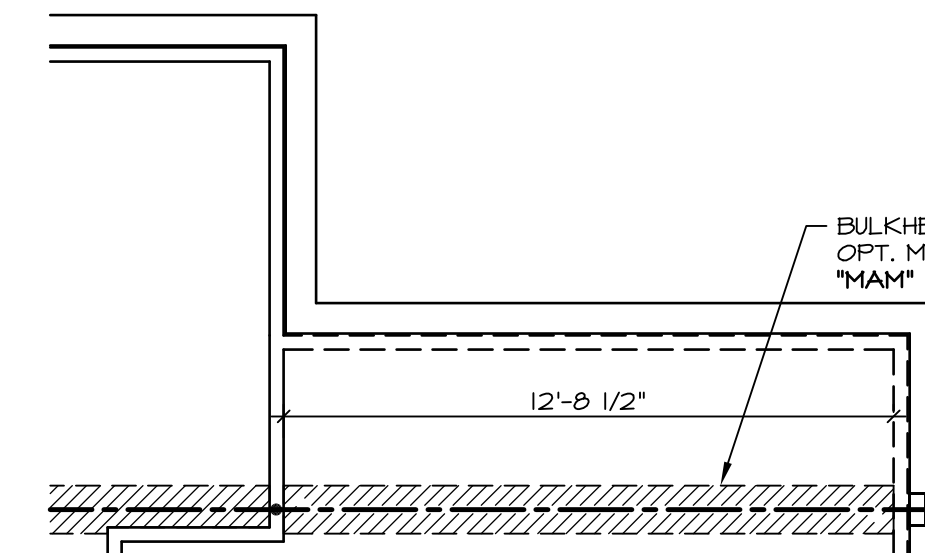
ELEVATION "B" "ELB"



PARTIAL BASEMENT FLOOR PLAN

SCALE: 1/4" = 1'-0"

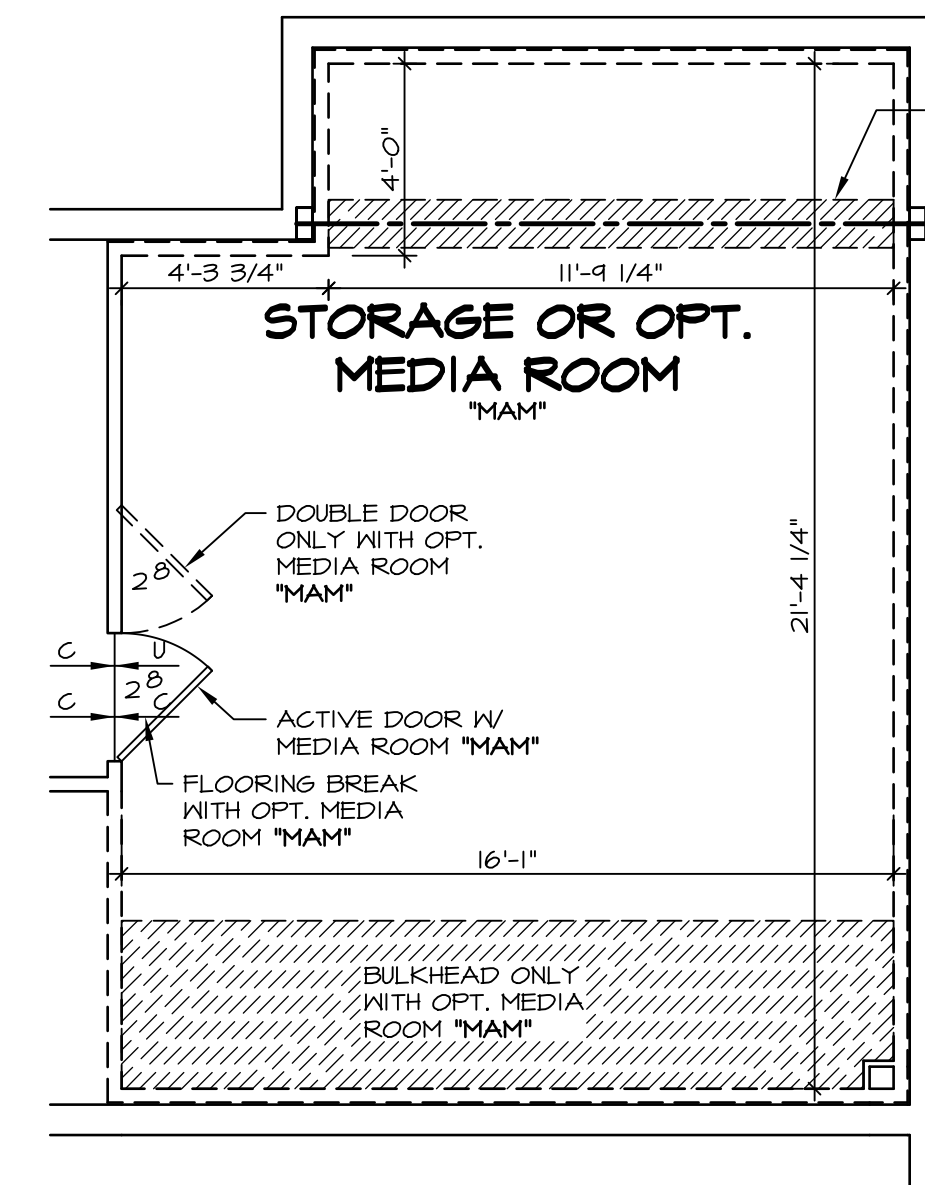
ELEVATION "C" "ELC"
ELEVATION "L" "ELL"



PARTIAL BASEMENT FLOOR PLAN

SCALE: 1/4" = 1'-0"

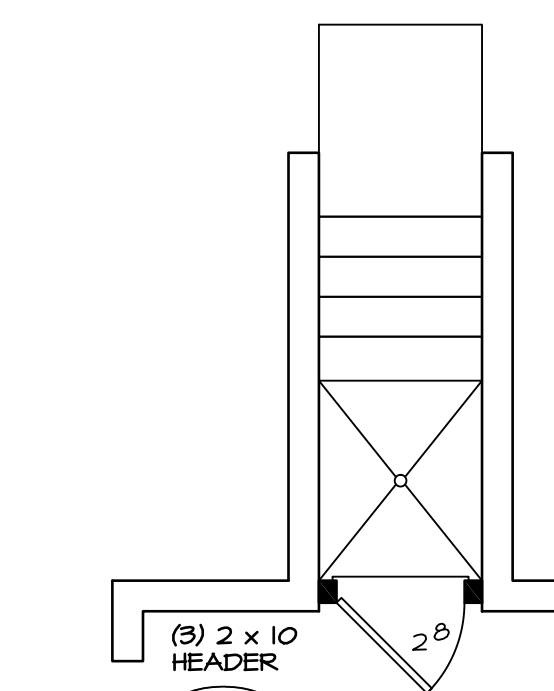
MORNING ROOM "MAA"
BEDROOM FIRST FLOOR "BAR"



PARTIAL BASEMENT FLOOR PLAN

SCALE: 1/4" = 1'-0"

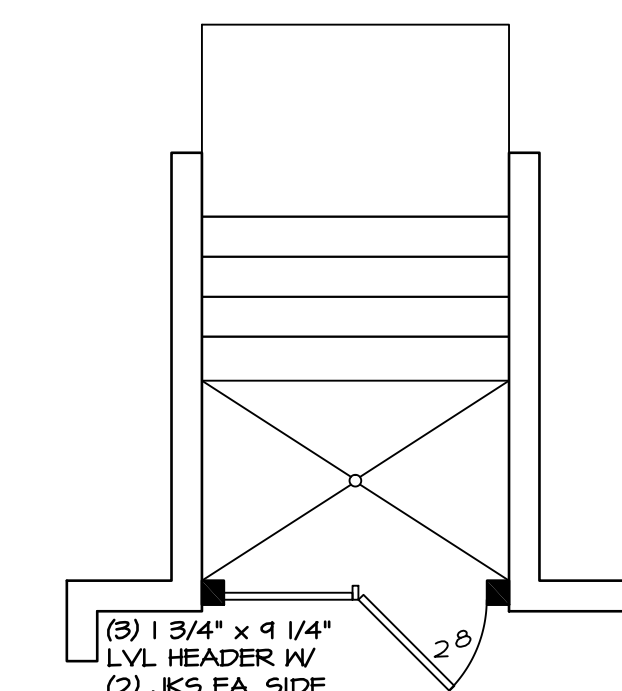
BEDROOM FIRST FLOOR "BAR"



PARTIAL BSMNT FLOOR PLAN

SCALE: 1/4" = 1'-0"

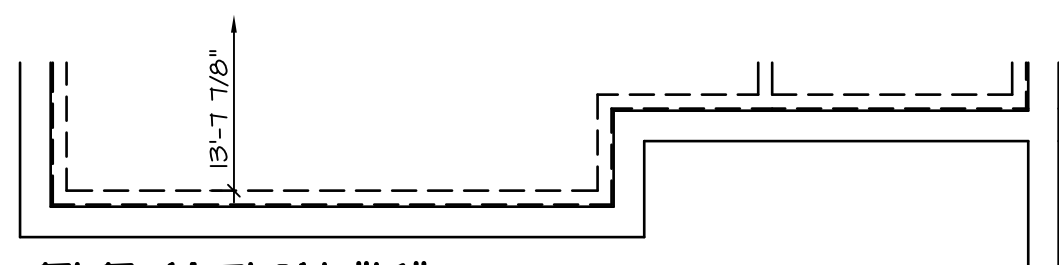
SINGLE PATIO DOOR AREAWAY WELLED EXIT "DBC"



PARTIAL BSMNT FLOOR PLAN

SCALE: 1/4" = 1'-0"

5/4 DOUBLE PATIO DOOR AREAWAY WELLED EXIT "DQC"



PARTIAL BASEMENT FLOOR PLAN

SCALE: 1/4" = 1'-0"

ELEVATION "K" "ELK"

NOTES:

- BEARING WALL
- NON BEARING WALL
- ENGINEERING PAGE NUMBER
- 1. ALL HEADERS ARE (2) 2x6 w/ 2x4 WALLS OR (3) 2x6 w/ 2x6 WALLS, UNLESS OTHERWISE NOTED.
- 2. ALL HEADERS TO HAVE (1) 2x4 OR 2x6 JACK EACH END, UNLESS OTHERWISE NOTED.
- 3. ALL EXTERIOR WALLS TO BE 6" AND ALL INTERIOR WALLS TO BE 3 1/2", UNLESS OTHERWISE NOTED.
- 4. HATCHED AREAS INDICATE DROPPED CEILING.
- 5. SEE BRACED WALL PANEL DETAIL SHEET FOR SPECIAL WALL FRAMING LOCATIONS AND HEADER SIZES, IF APPLICABLE.
- 6. SEE STANDARD DETAIL SHEET D-1 FOR TRIM OPTIONS (21 / D-1) AND DETAILS.

WITH OPTION "SC1" - DRYWALL UNFINISHED BASEMENT CEILING AREA

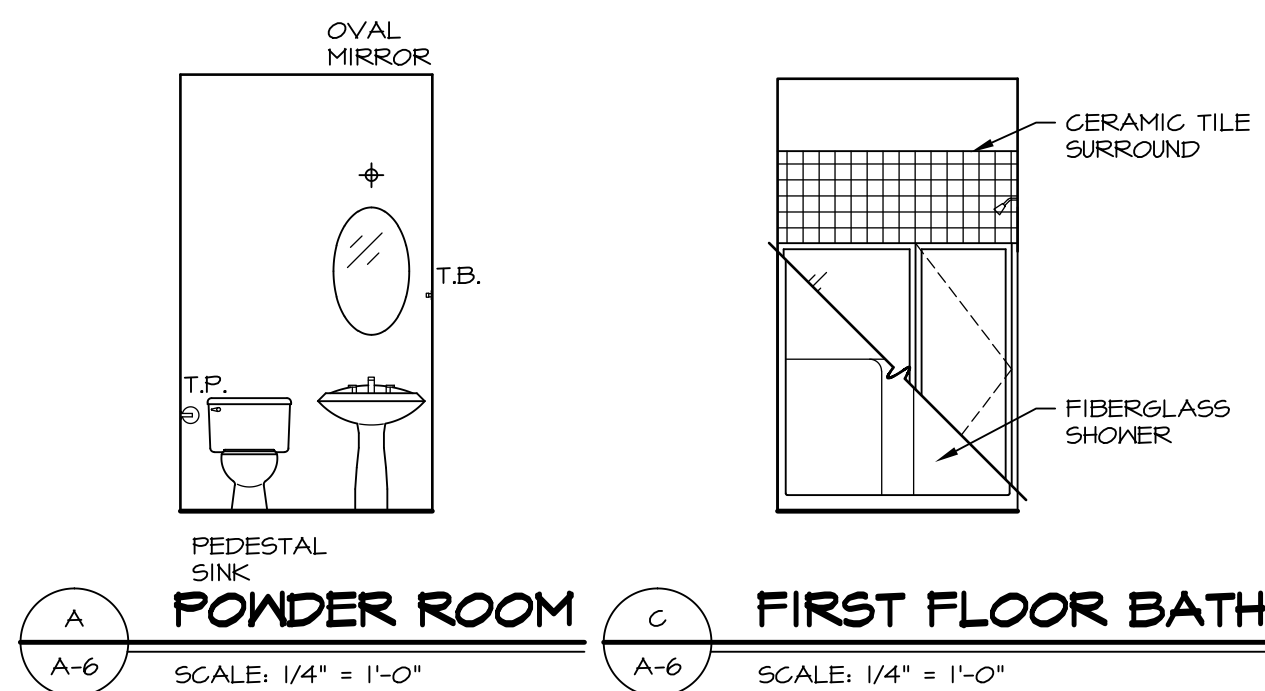
NOTES:

- 1/2" GYPSUM WALL BOARD REQUIRED ON CEILING IN UNFINISHED AREAS WHEN NO SPRINKLER SYSTEM IS INSTALLED.
- A MAXIMUM AREA OF 90 SQ FT MAY BE OMITTED AS NEEDED FOR INSTALLATION OF PLUMBING, ELECTRICAL, AND/OR HVAC (TYPICALLY AN 8'-0" x 8'-0" CEILING SPACE ABOVE MECHANICAL AREA).
- PROVIDE FIRE BLOCKING AS REQUIRED AT PERIMETER OF ANY AREAS WHERE DRYWALL HAS BEEN OMITTED.

REV. NO.	DATE	REMARKS
1	10/11/13	CSB - PROTOTYPED REVISIONS
2	10/21/13	CSB - CREATED VERSION 01
3	11/14/13	DCM - MARKETING TRIM REVIEW - REVISED CLOSET UNDER STAIR
4	4/30/14	CEL - FRAXIS TUB CONVERSION
5	5/1/14	DKK - NET BAR PROJECT
6	6/16/14	SKM - REVISED THE DOOR LOCATION INTO MECH RM. PAR 24B'16"
7	3/26/15	BEK - HVAC PHASE #2 CHANGES
8	11/14/15	DEA - SHOWER DOOR PROJECT 1172
9	4/29/15	CLS - ADDED 1 TO DETAIL AT THE NET BAR AND CENTERED SINK (PAR ID 39217)



MODEL	LONDON
SET NO.	LPN00
VERSION 01	
DRAWN BY	CEL
DATE:	4/16/13
OPTION	FBA
DRAWING TITLE	BASEMENT FLOOR PLAN
OPTION DESCRIPTION	FOUNDATION
SHEET NO.	A-5
	30

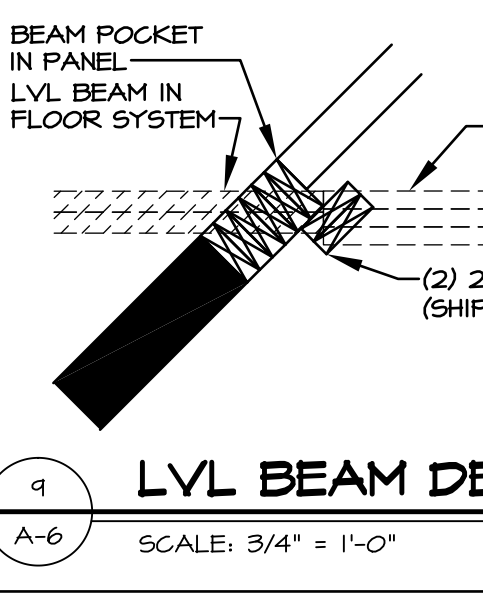


POWDER ROOM SCALE: 1/4" = 1'-0"
FIRST FLOOR BATH SCALE: 1/4" = 1'-0"

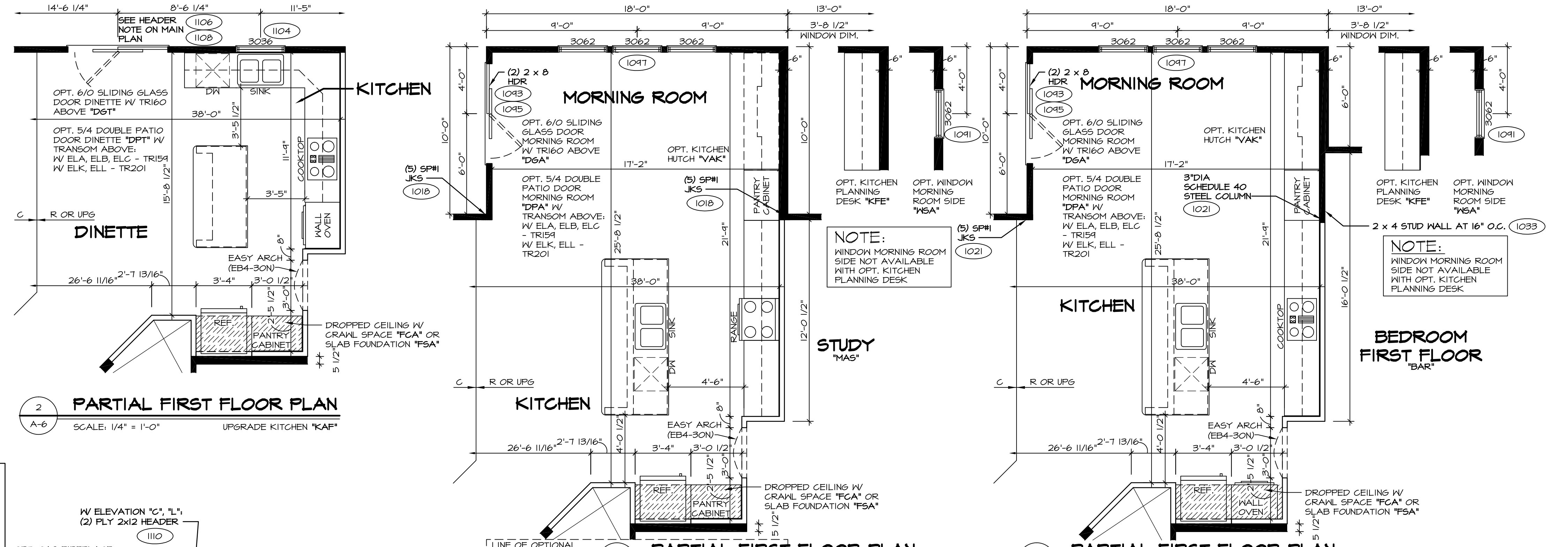
NOTES:
 1. TEMPERED GLASS SHOWER ENCLOSURE
 2. TUB ACCESS PANELS PROVIDED AS NEEDED, ALL MATERIALS BY DIVISION.
 3. REFER TO SHEET 10 FOR TUB AND SHOWER DETAILS.



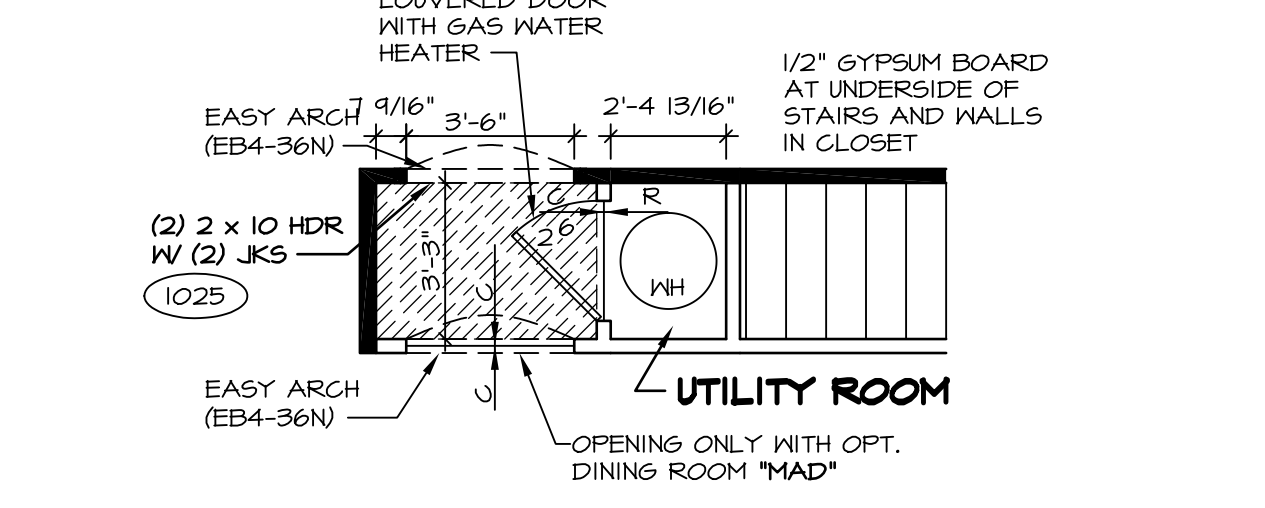
FIRST FLOOR BATH SCALE: 1/4" = 1'-0"



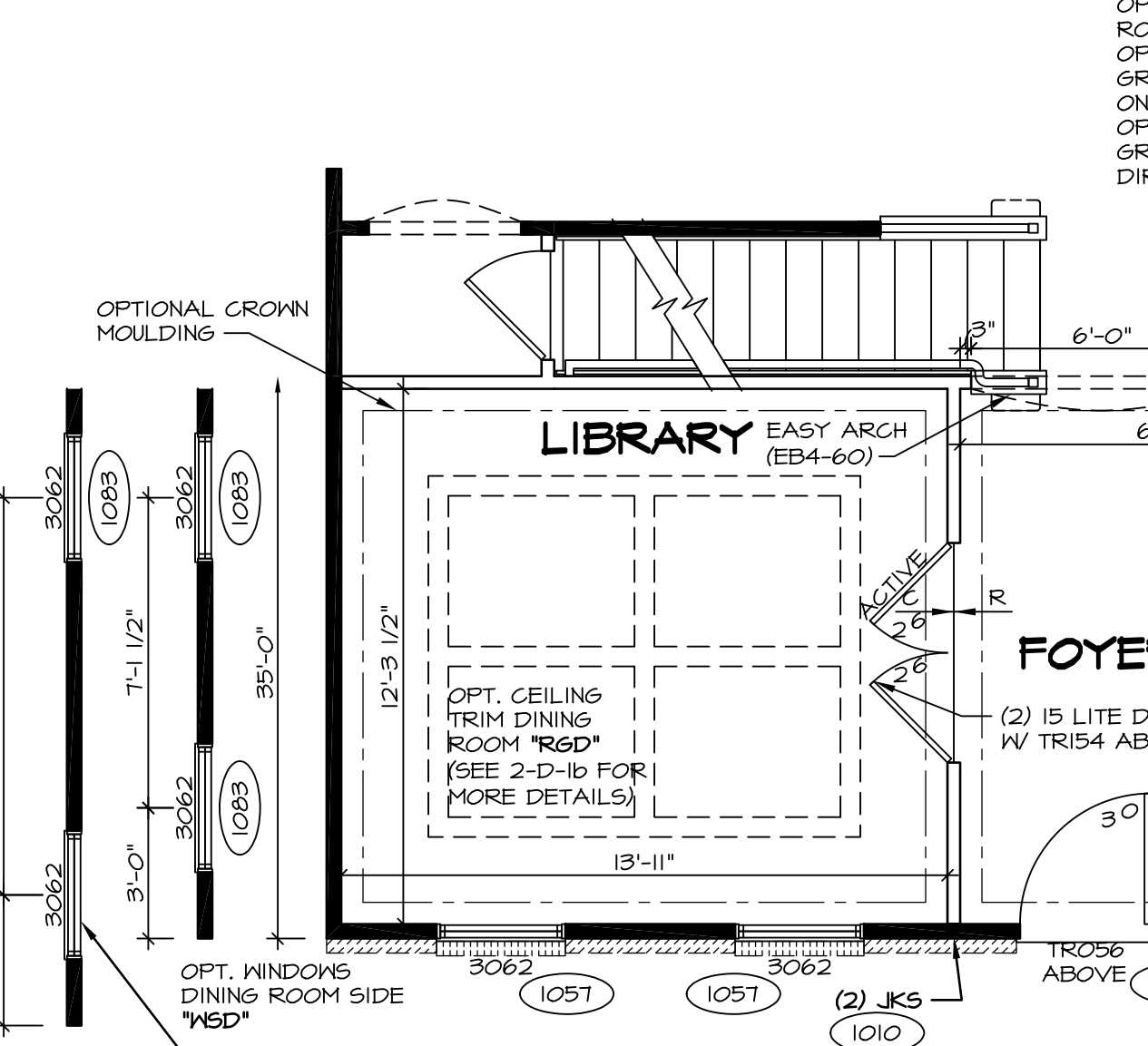
LVL BEAM DETAIL SCALE: 3/4" = 1'-0"



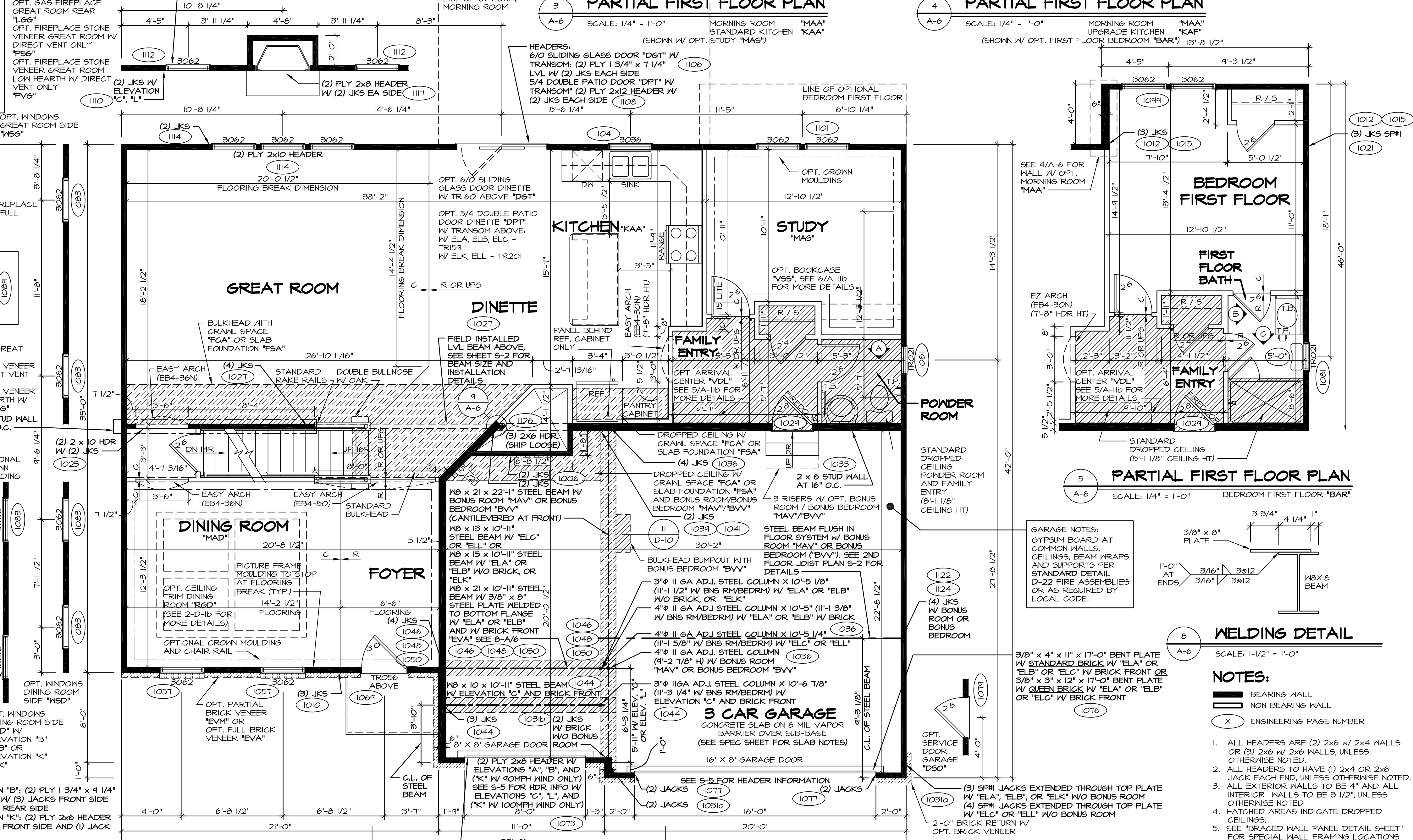
PARTIAL FIRST FLOOR PLAN SCALE: 1/4" = 1'-0"
PARTIAL FIRST FLOOR PLAN SCALE: 1/4" = 1'-0"
PARTIAL FIRST FLOOR PLAN SCALE: 1/4" = 1'-0"



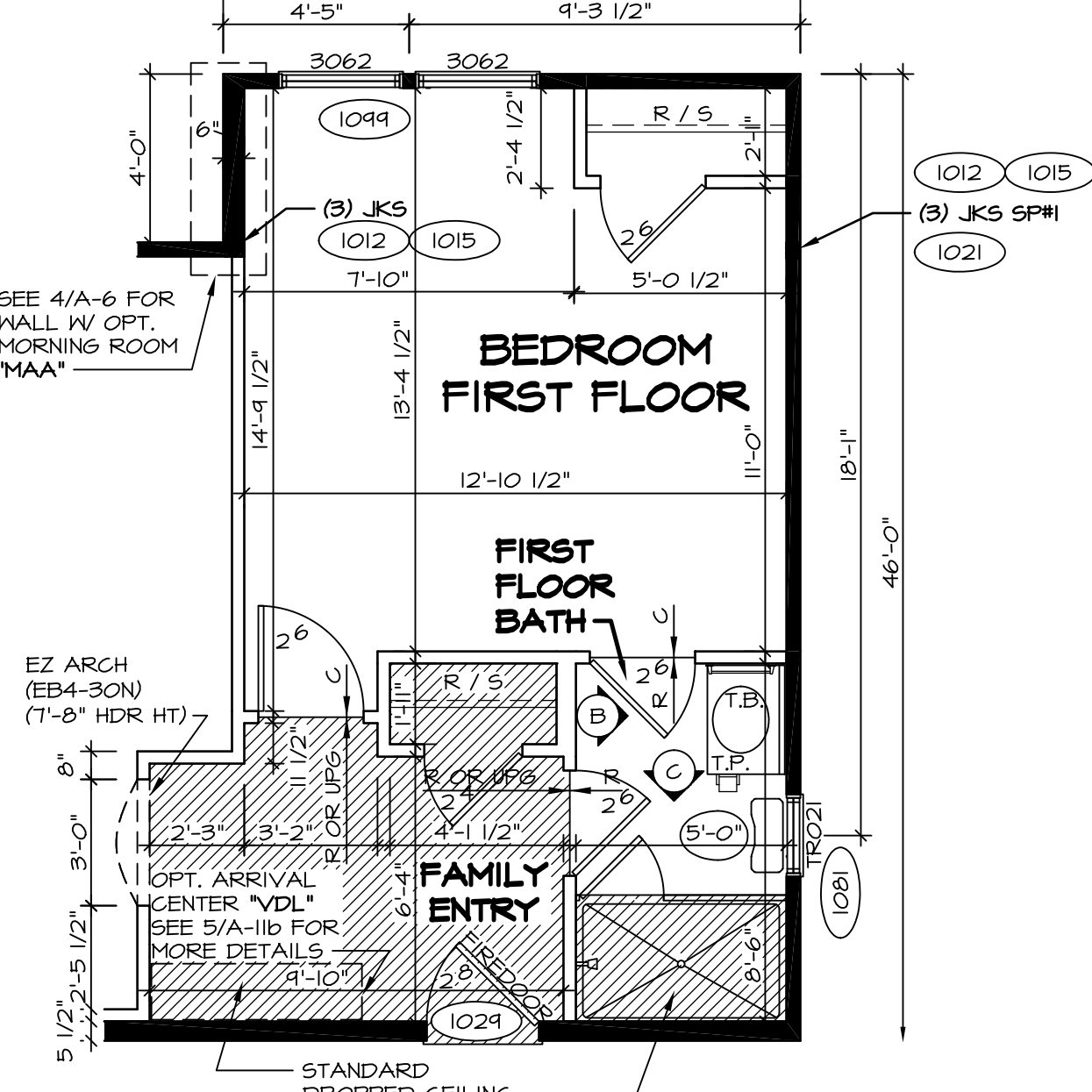
PARTIAL FIRST FLOOR PLAN SCALE: 1/4" = 1'-0"



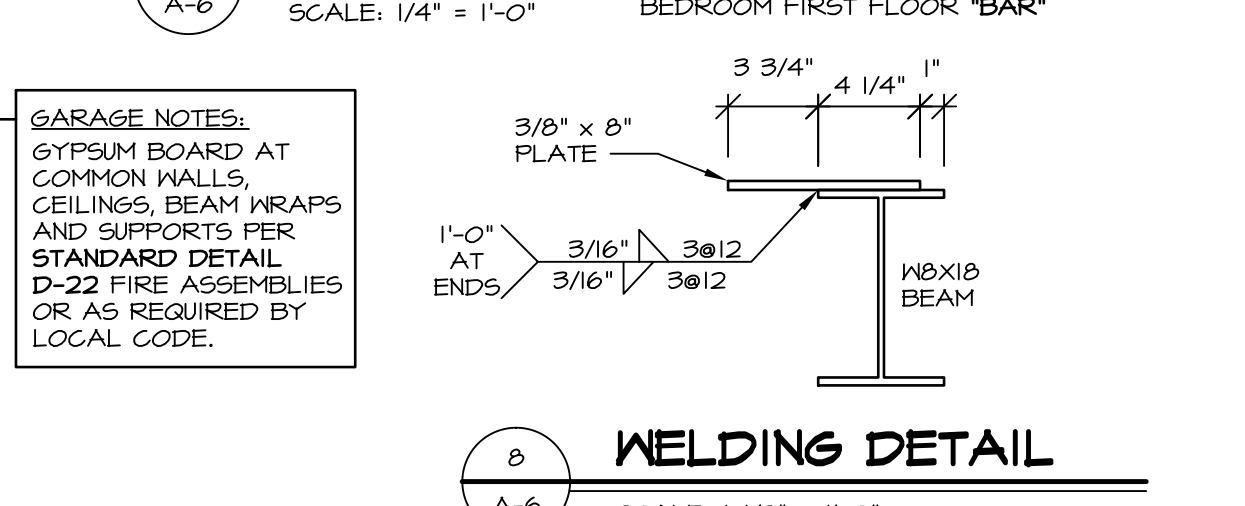
PARTIAL FIRST FLOOR PLAN SCALE: 1/4" = 1'-0"



FIRST FLOOR PLAN SCALE: 1/4" = 1'-0"



PARTIAL FIRST FLOOR PLAN SCALE: 1/4" = 1'-0"

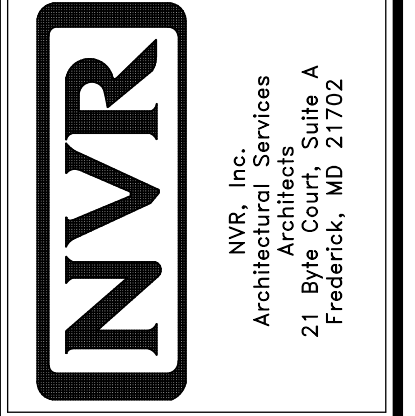


WELDING DETAIL SCALE: 1/2" = 1'-0"

NOTES:
 1. ALL HEADERS ARE (2) 2x6 W/ 2x4 WALLS OR (3) 2x6 W/ 2x6 WALLS, UNLESS OTHERWISE NOTED.
 2. ALL HEADERS TO HAVE (1) 2x4 OR 2x6 JACK EACH END, UNLESS OTHERWISE NOTED.
 3. ALL EXTERIOR WALLS TO BE 4" AND ALL INTERIOR WALLS TO BE 3 1/2", UNLESS OTHERWISE NOTED.
 4. HATCHED AREAS INDICATE DROPPED CEILING.
 5. SEE "BRACED HALL PANEL DETAIL SHEET" FOR SPECIAL HALL FRAMING LOCATIONS AND HEADER SIZES, IF APPLICABLE.
 6. SEE STANDARD DETAIL SHEET D-1 FOR TRIM OPTIONS (2) / (D-1) AND DETAILS.
 7. ALL X66 WINDOWS HAVE 8'-0" 1/2" HEADER HEIGHT UNLESS OTHERWISE NOTED.

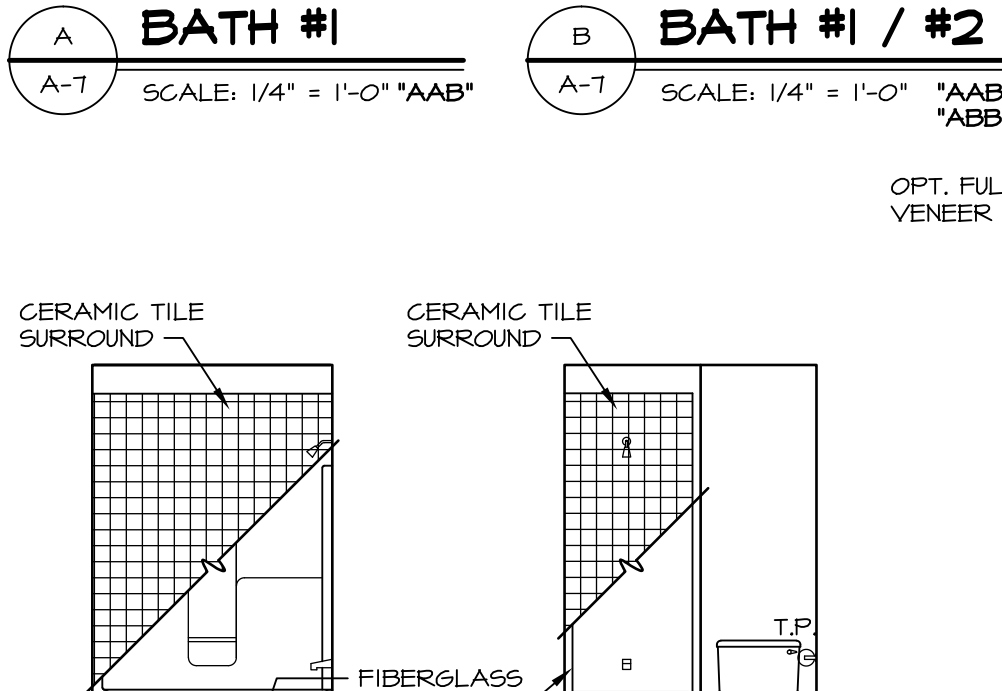
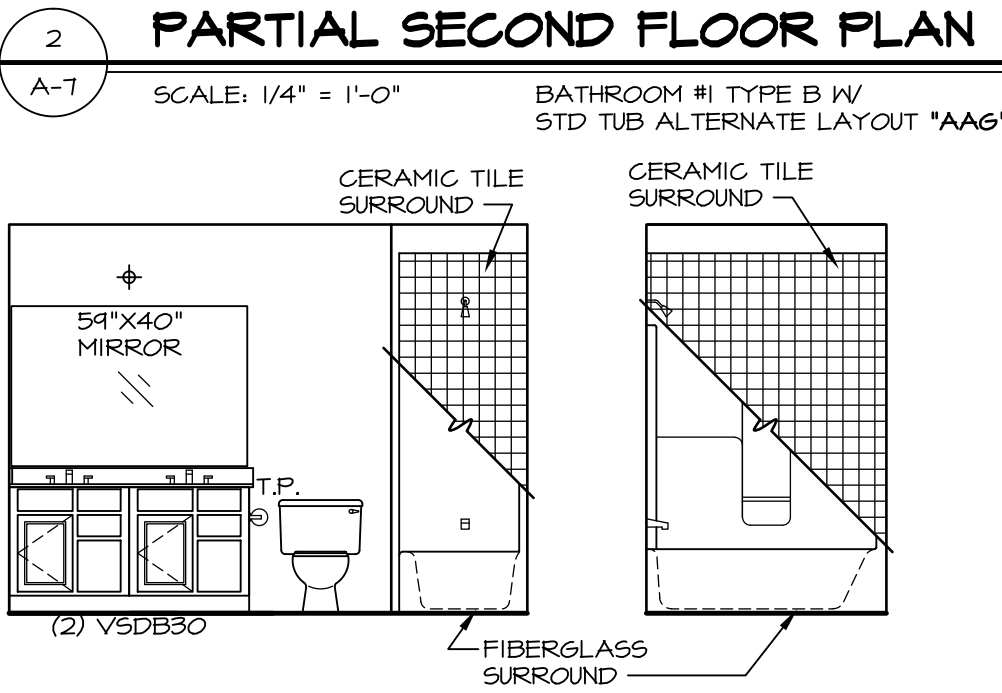
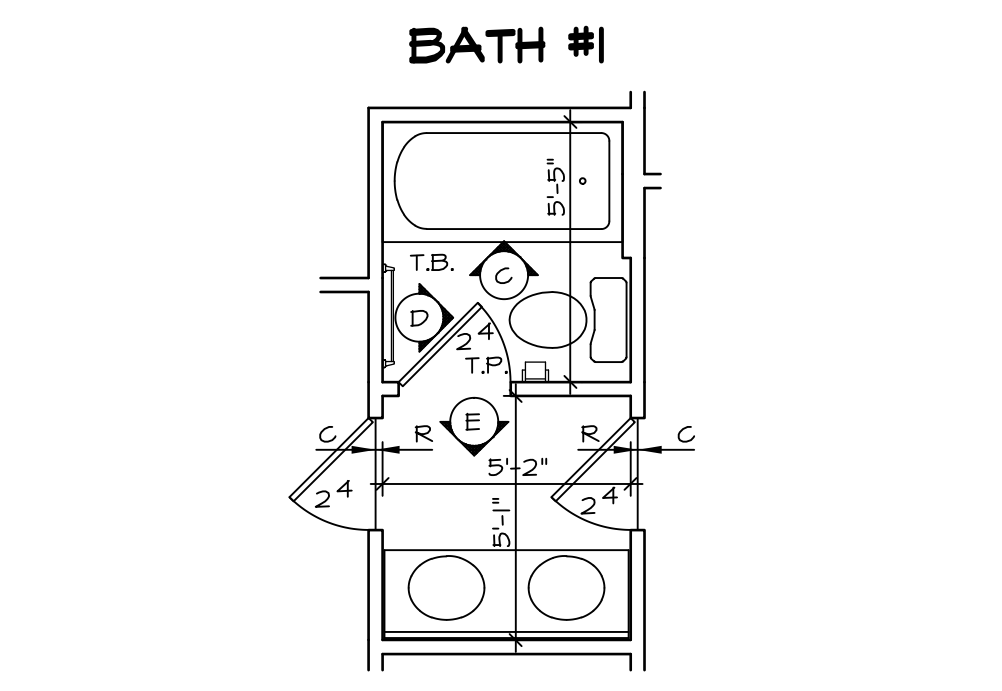
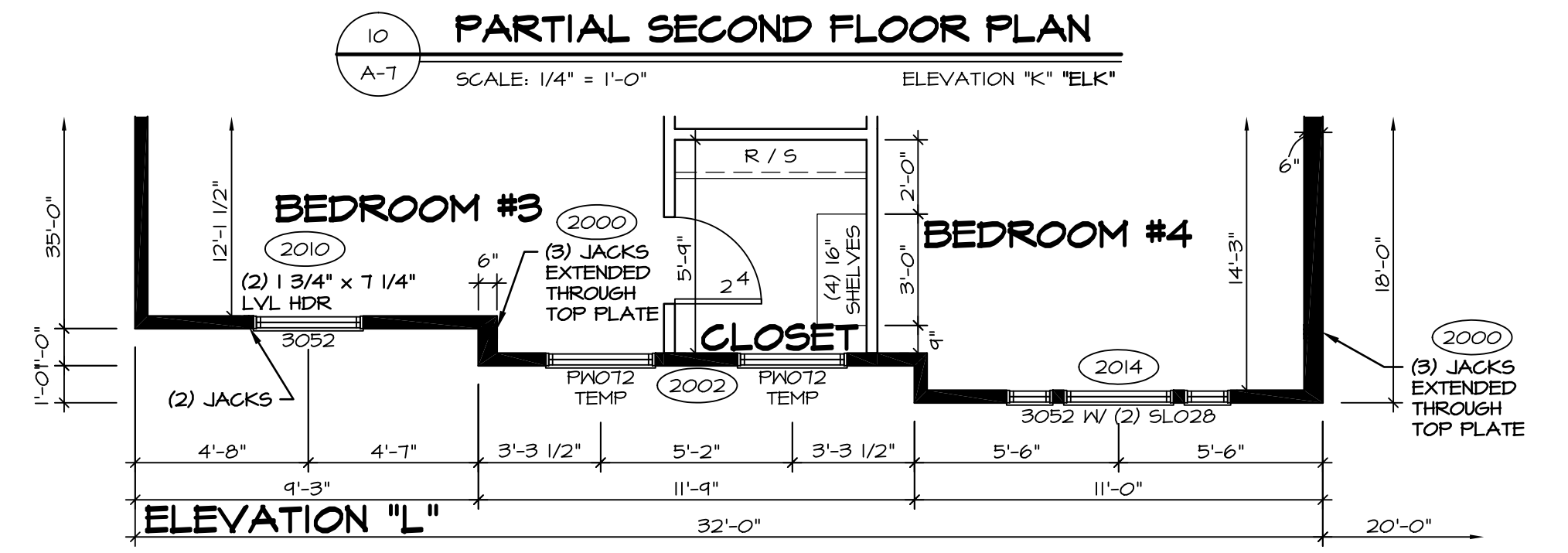
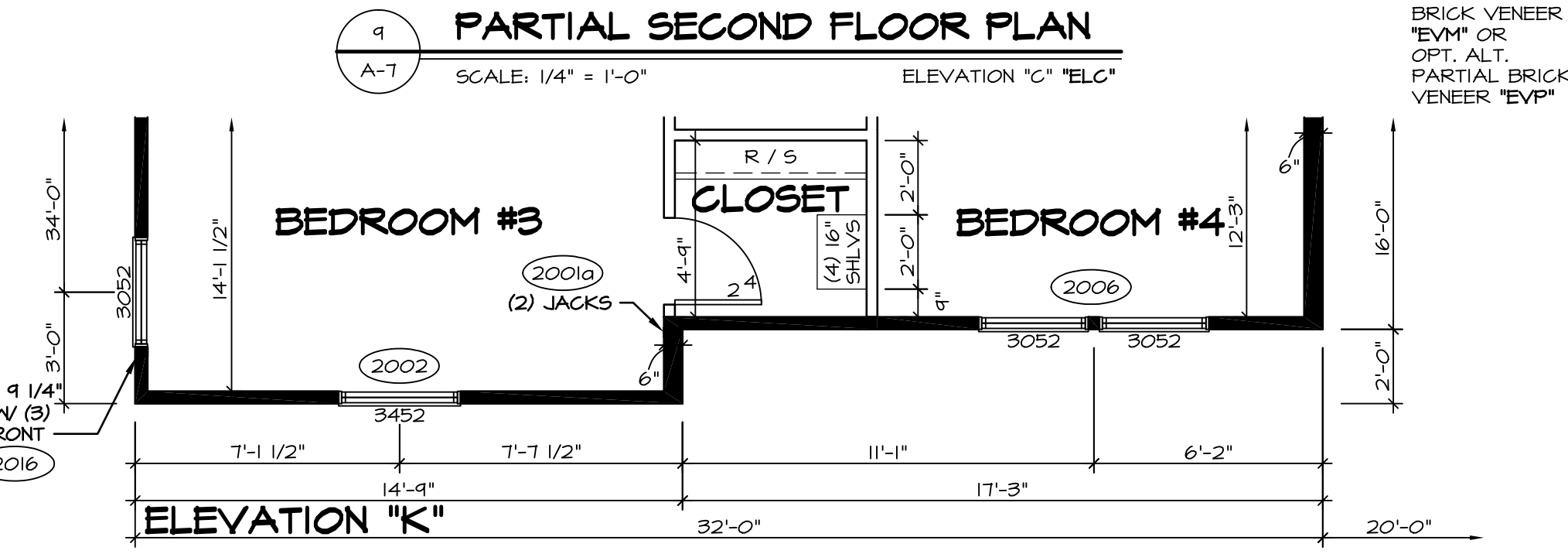
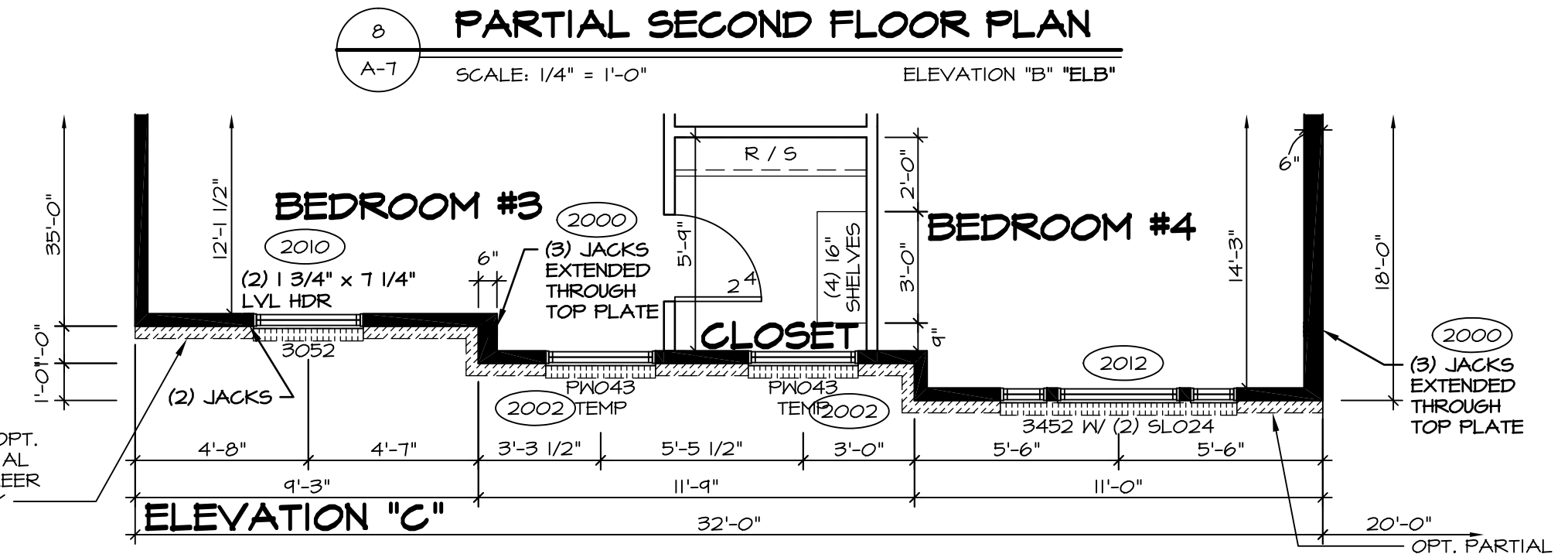
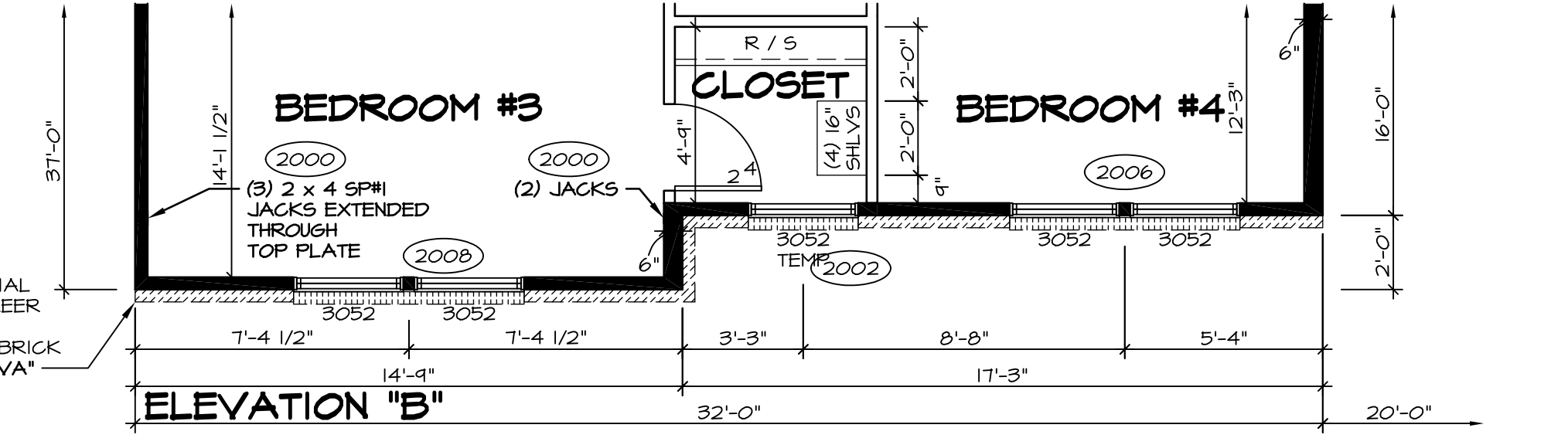
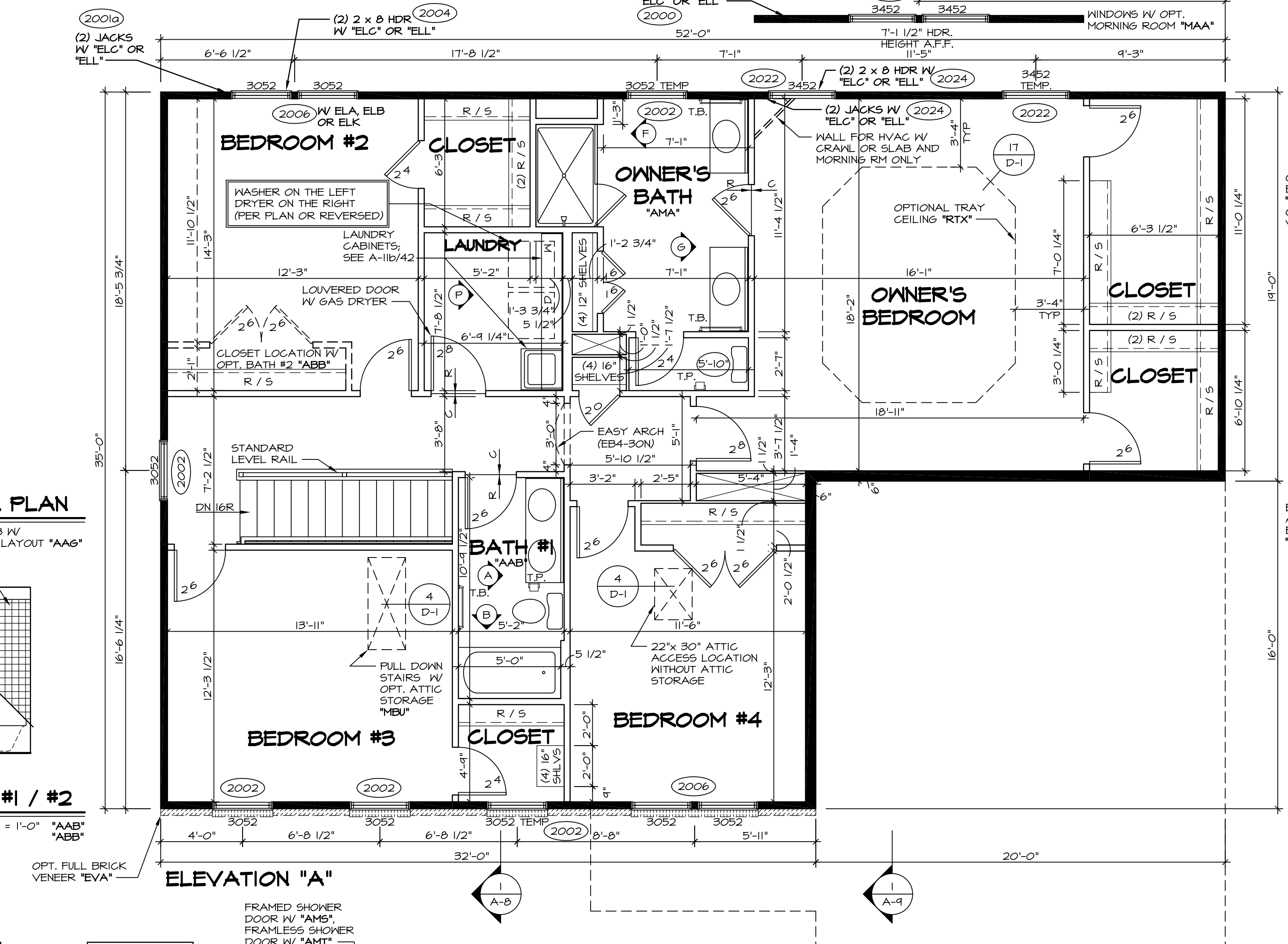
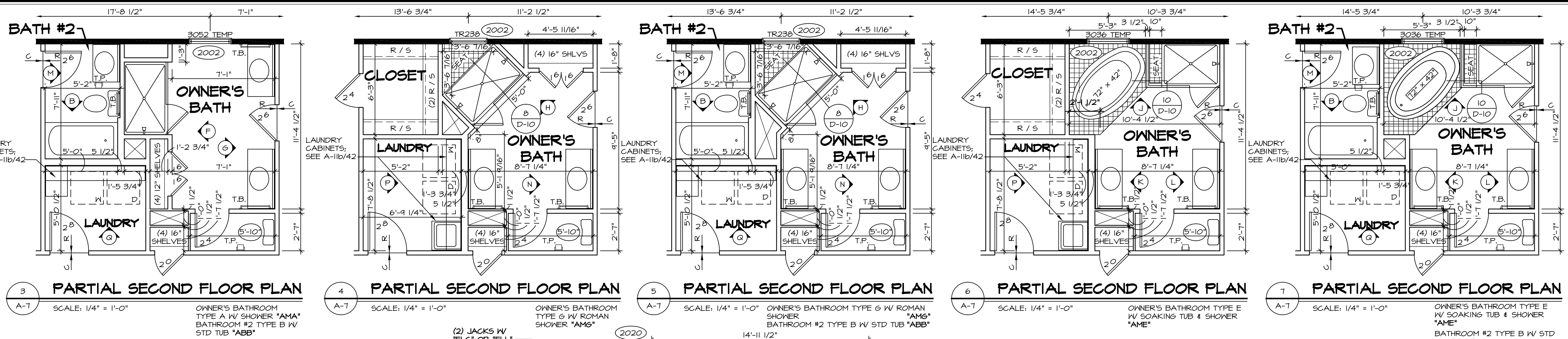
REV. NO.	DATE	DESCRIPTION
1	3/20/15	BEEB - HVAC PHASE #2 CHANGES
2	4/13/15	CEL - DNR#403 AND DNR#436 - UPDATED WITH NORTHEAST SPECIFICATIONS
3	4/29/15	CEL - ADDED DOOR CALL-OUT AT WATER HEATER CLOSET W/ "FGA" OR "FSA"
4	5/26/15	CLS - REV. DIM. OF REAR STL. BM. IN THE GAR. WASNT GOING TO WALL (R30084)
5	6/23/15	DRK - SHOWER DOOR PROJECT 112
6	10/20/15	BEEB - SHOWER DOOR PROJECT 112
7	12/29/16	SSS - ADDED DETAIL 9 (PAR 449252)

NVR, Inc., owner, expressly reserves its common law copyright and other property rights in these plans. These plans are not to be reproduced, stored in a retrieval system, or transmitted in any form or by any means, without the prior written consent of NVR, Inc.



SET NO.	LPNOO	VERSION	DATE	OPTION
1	01	CEL	4/16/15	

SHEET NO.	MODEL	DRAWING TITLE	OPTION DESCRIPTION
A-6	LONDON	FIRST FLOOR PLAN	



BATH NOTES:

- TEMPERED GLASS SHOWER ENCLOSURE.
- TUB ACCESS PANELS PROVIDED AS NEEDED, ALL MATERIALS BY DIVISION
- REFER TO SHEET D-33 (18x24) OR D-10 (24x36) FOR TUB AND SHOWER DETAILS.
- ALL VSD24-42 DRAWERS TO BE SET ON RIGHT HAND.

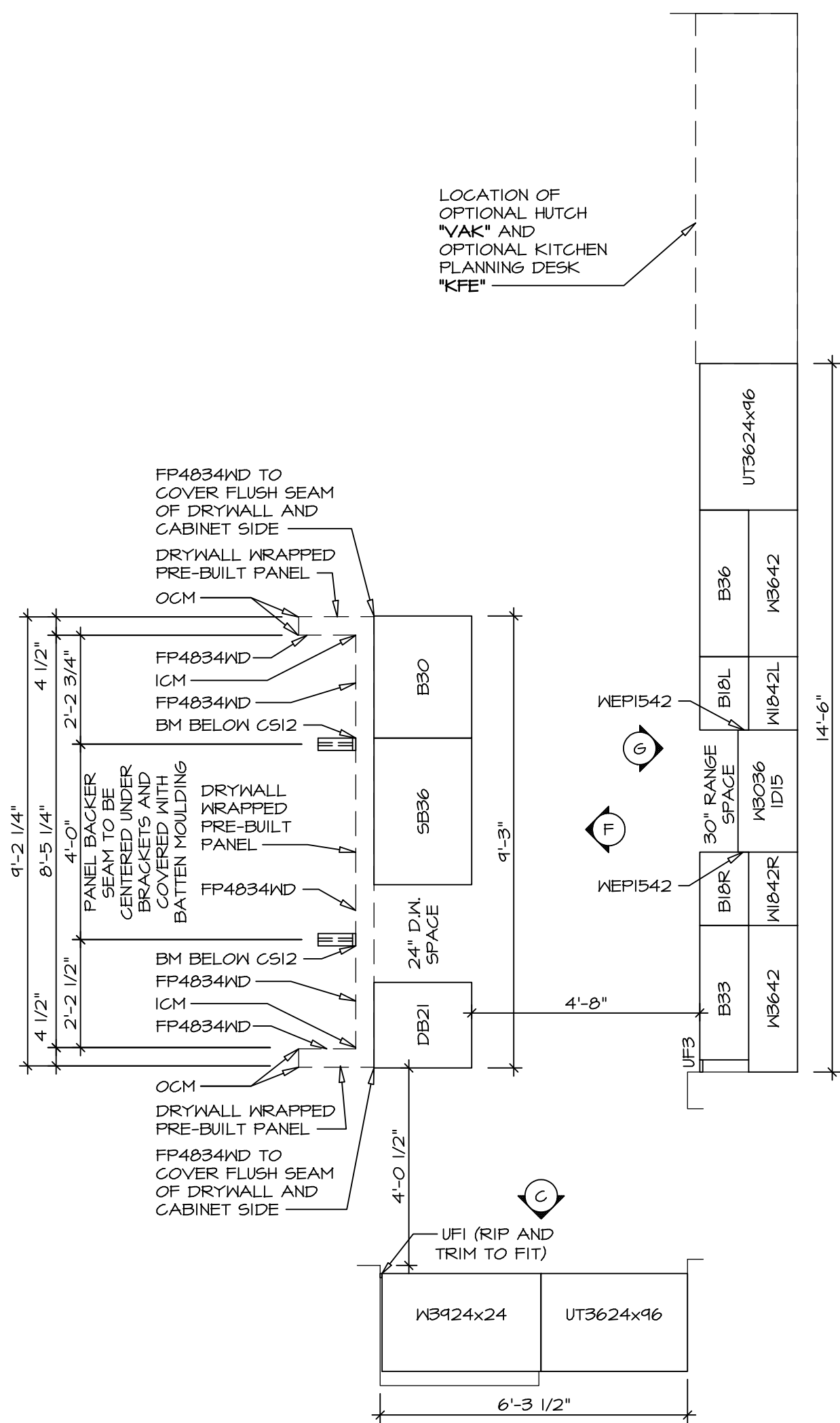
NOTES:

- ALL HEADERS ARE (2) 2x6 W/ 2x4 WALLS OR (3) 2x6 W/ 2x6 WALLS, UNLESS OTHERWISE NOTED.
- ALL HEADERS TO HAVE (1) 2x4 OR 2x6 JACK EACH END, UNLESS OTHERWISE NOTED.
- ALL EXTERIOR WALLS TO BE 4" AND ALL INTERIOR WALLS TO BE 3 1/2", UNLESS OTHERWISE NOTED.
- HATCHED AREAS INDICATE DROPPED CEILING.
- SEE "BRACED WALL PANEL DETAIL SHEET" FOR SPECIAL WALL FRAMING LOCATIONS AND HEADER SIZES, IF APPLICABLE.
- SEE STANDARD DETAIL SHEET D-1 FOR TRIM OPTIONS (27 / D-1) AND DETAILS.

REV. NO.	DATE	DESCRIPTION
1	6/16/16	ELH - ADDED DIMENSIONS TO SOAKING TUB AND SHOWER SEAT PAR # 40260
2	11/16/16	DLR - REVISED BEDROOM #3 CLOSET WINDOW TO TEMPERED GLASS (PAR #42655)
3	11/22/16	DLR - ADDED CABINET ELEVATION BUBBLES IN LAUNDRY ROOM (PAR #2603)
4	11/26/16	ELB - REVISED OPT. "VVD" NOTE FROM BATH #1 ELEVATION (PAR#29323)
5	4/19/15	CEL - PHRIMOS AND PHRIMOS - UPDATED FOR NORTHEAST SPECIFICATIONS
6	11/14/15	DRA - SHOWER DOOR PROJECT 112
7	8/21/15	CLS - REVISED OPT. LAUNDRY TRAY AND SHOWER OPT. LAUNDRY SINK BY DIV. 1 (34442)
8	10/21/15	CLS - REV. WINDOW HDRS BDRM. #3 ELEC. ELL TO MATCH PV AND ENG. (ID. 36867)
9	3/25/16	ISE - REV. LAUNDRY TO SHIP STD. CABINETS AND LAUNDRY SINK (DR#2120)

MODEL: LONDON
DRAWING TITLE: SECOND FLOOR PLAN
DATE: 4/16/13
OPTION

SHEET NO. A-7
33

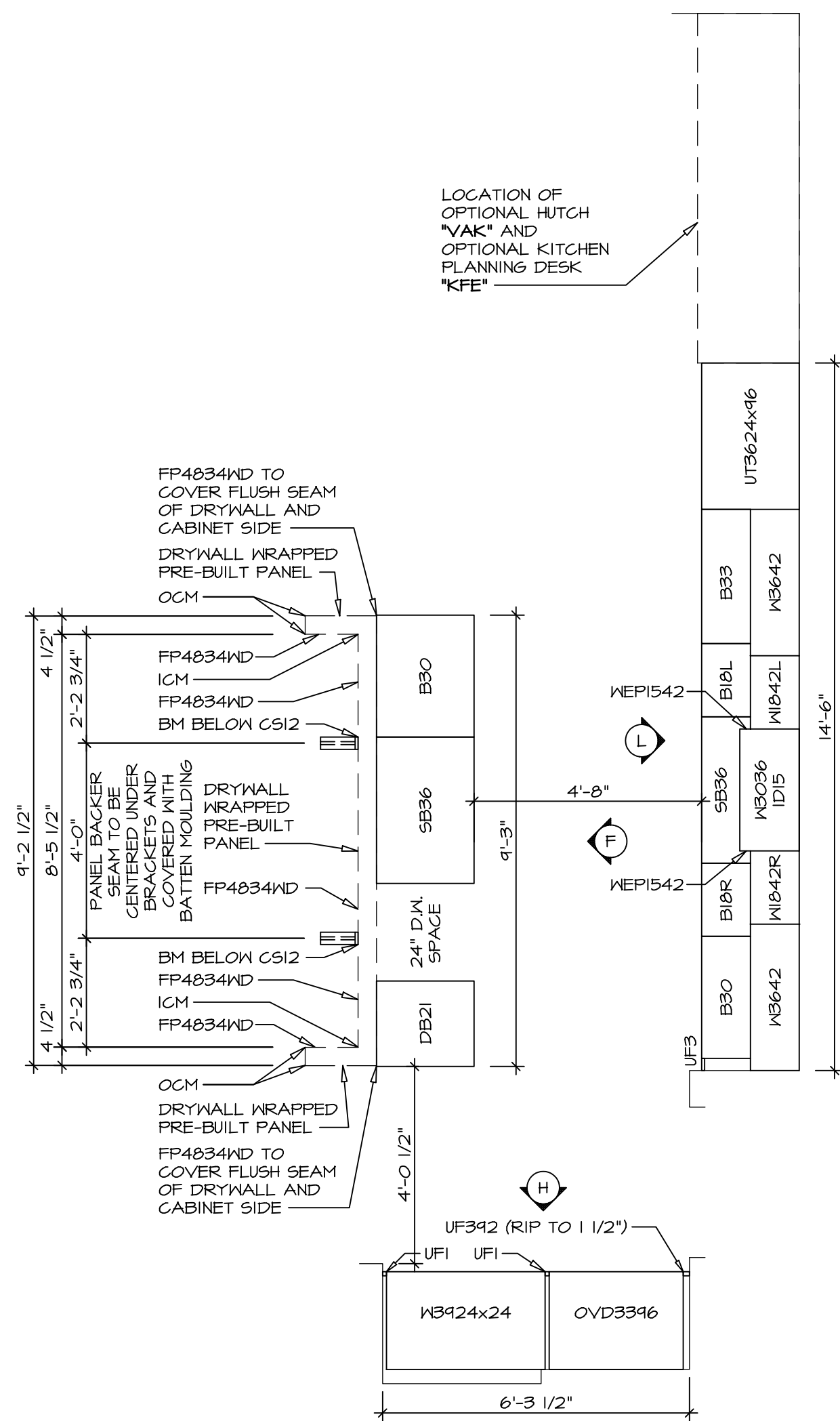


CABINET PLAN KC-2960

SCALE: 3/8" = 1'-0" STANDARD KITCHEN "KAA"

COUNTERTOP PLAN KT-2960

SCALE: 3/8" = 1'-0" STANDARD KITCHEN "KAA"



CABINET PLAN KC-2961

SCALE: 3/8" = 1'-0" STANDARD KITCHEN "KAF"

COUNTERTOP PLAN KT-2961

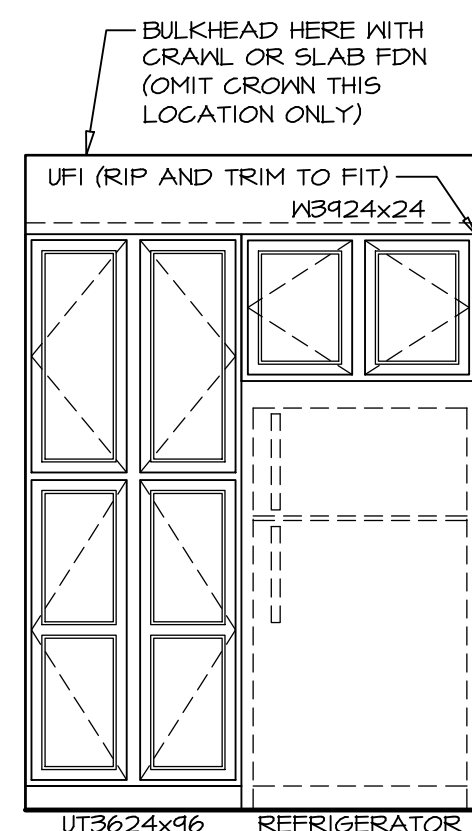
SCALE: 3/8" = 1'-0" STANDARD KITCHEN "KAF"

CABINET PLAN KC-2962

SCALE: 3/8" = 1'-0" OPT. KITCHEN HUTCH "VAK"

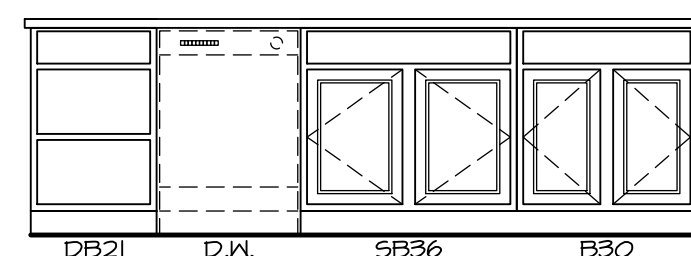
COUNTERTOP PLAN KT-2962

SCALE: 3/8" = 1'-0" OPT. KITCHEN HUTCH "VAK"



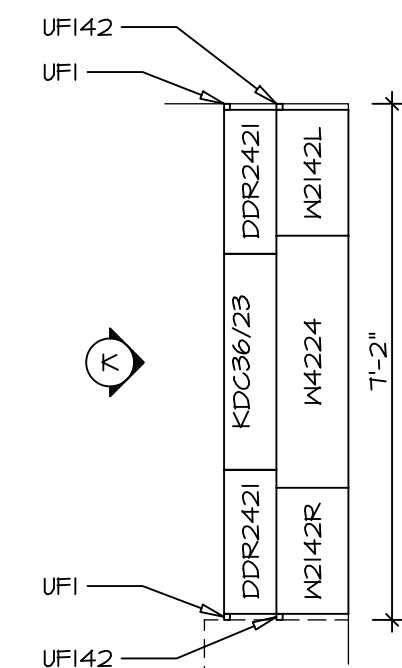
ELEVATION "C"

SCALE: 3/8" = 1'-0"



ELEVATION "F"

SCALE: 3/8" = 1'-0" MORNING ROOM "MAA"

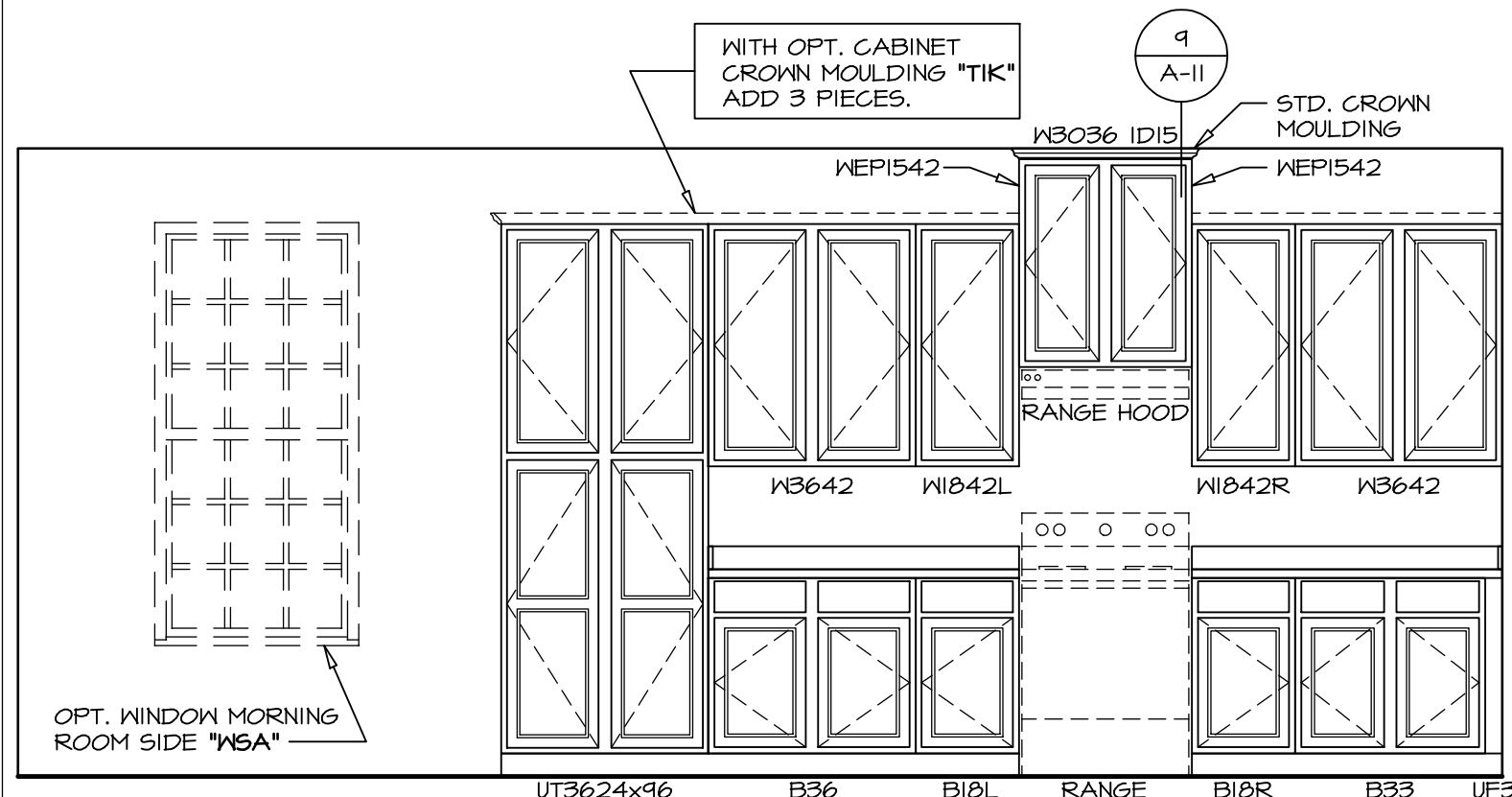


CABINET PLAN KC-2963

SCALE: 3/8" = 1'-0" OPT. KITCHEN PLANNING DESK "KFE"

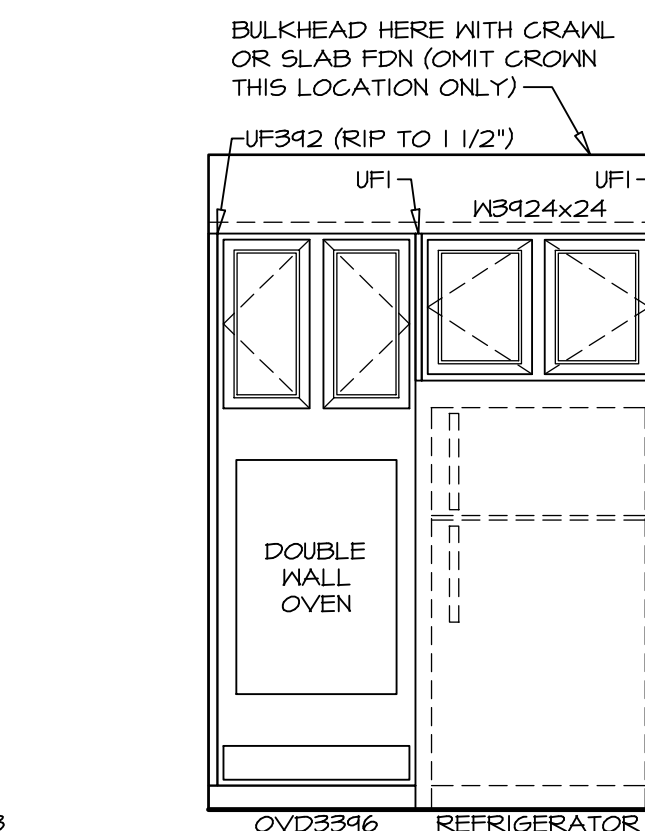
COUNTERTOP PLAN KT-2963

SCALE: 3/8" = 1'-0" OPT. KITCHEN PLANNING DESK "KFE"



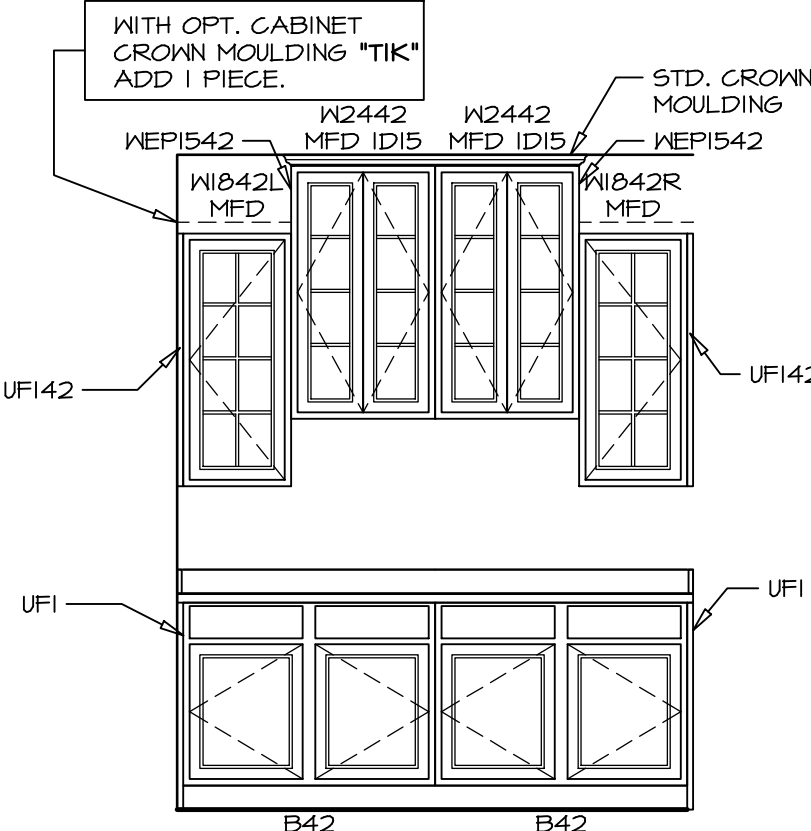
ELEVATION "G"

SCALE: 3/8" = 1'-0" STANDARD KITCHEN "KAA" OPT. MORNING ROOM "MAA"



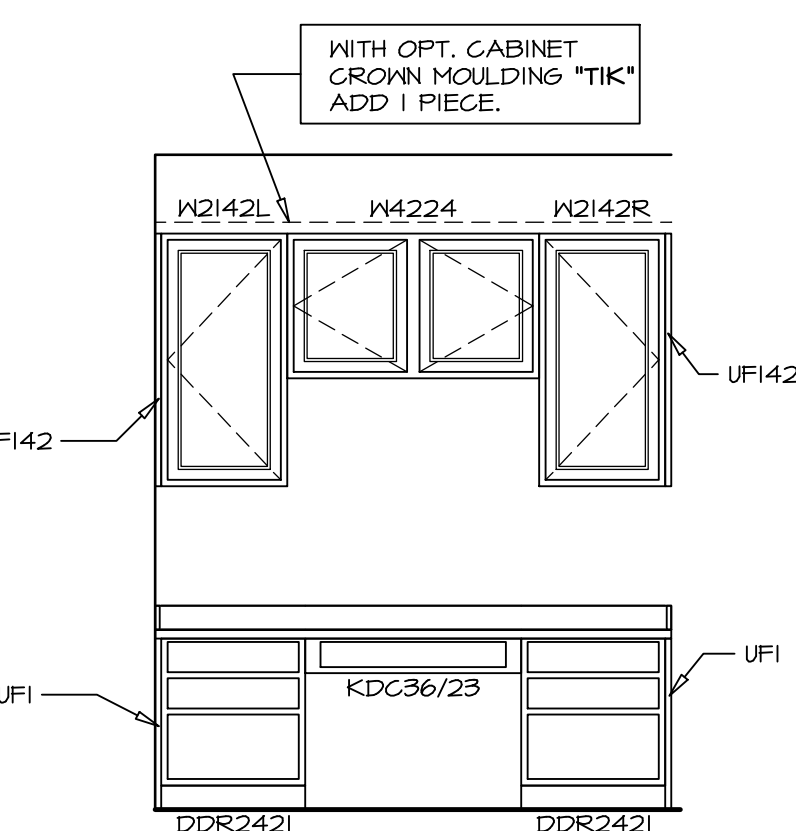
ELEVATION "H"

SCALE: 3/8" = 1'-0" UPGRADE KITCHEN "KAF" MORNING ROOM "MAA"



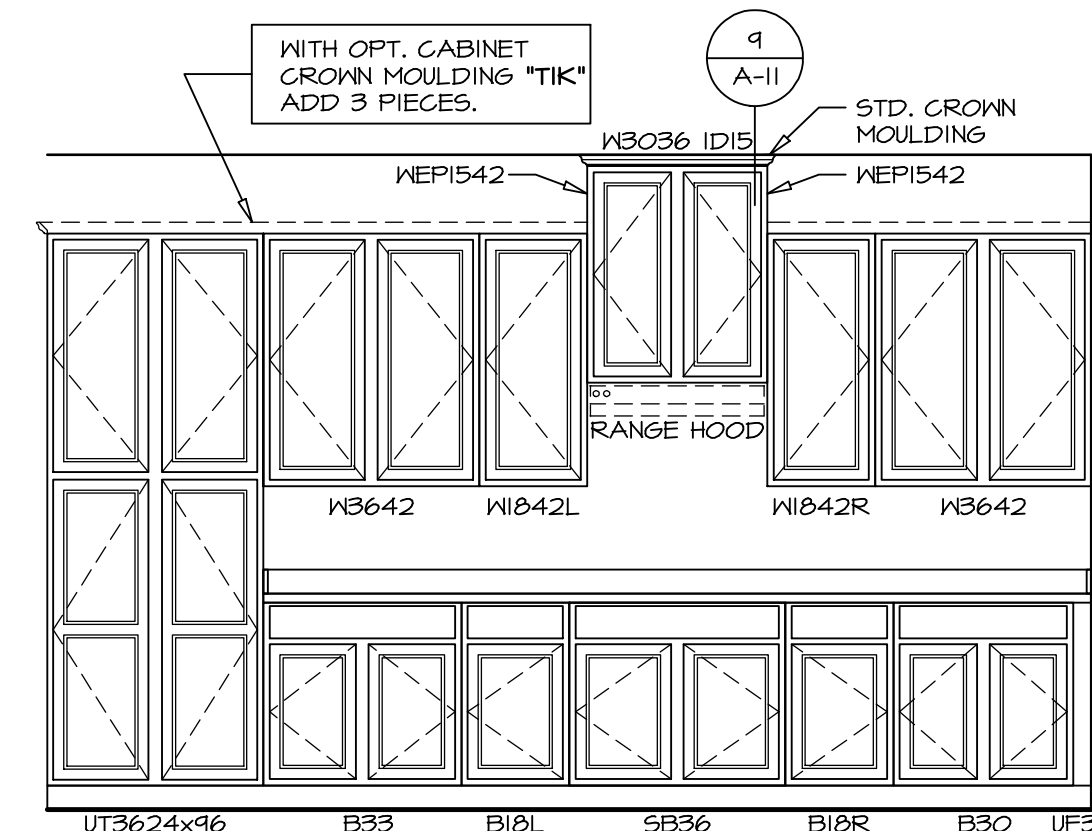
ELEVATION "J"

SCALE: 3/8" = 1'-0" OPT. KITCHEN HUTCH "VAK"



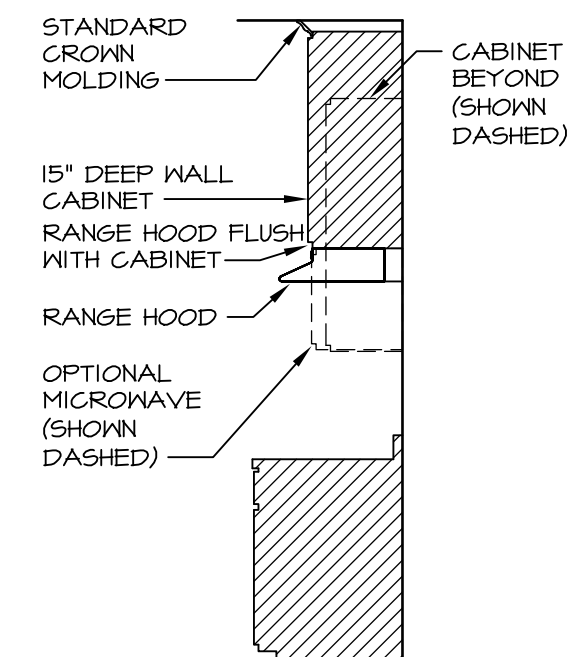
ELEVATION "K"

SCALE: 3/8" = 1'-0" OPT. KITCHEN PLANNING DESK "KFE"



ELEVATION "L"

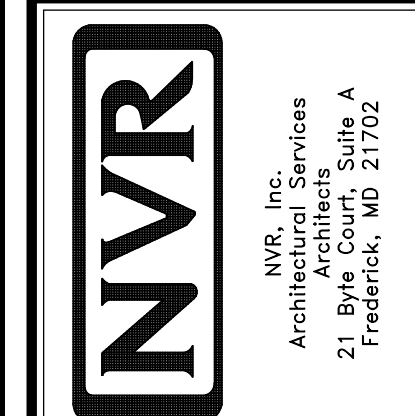
SCALE: 3/8" = 1'-0" UPGRADE KITCHEN "KAF" MORNING ROOM "MAA"



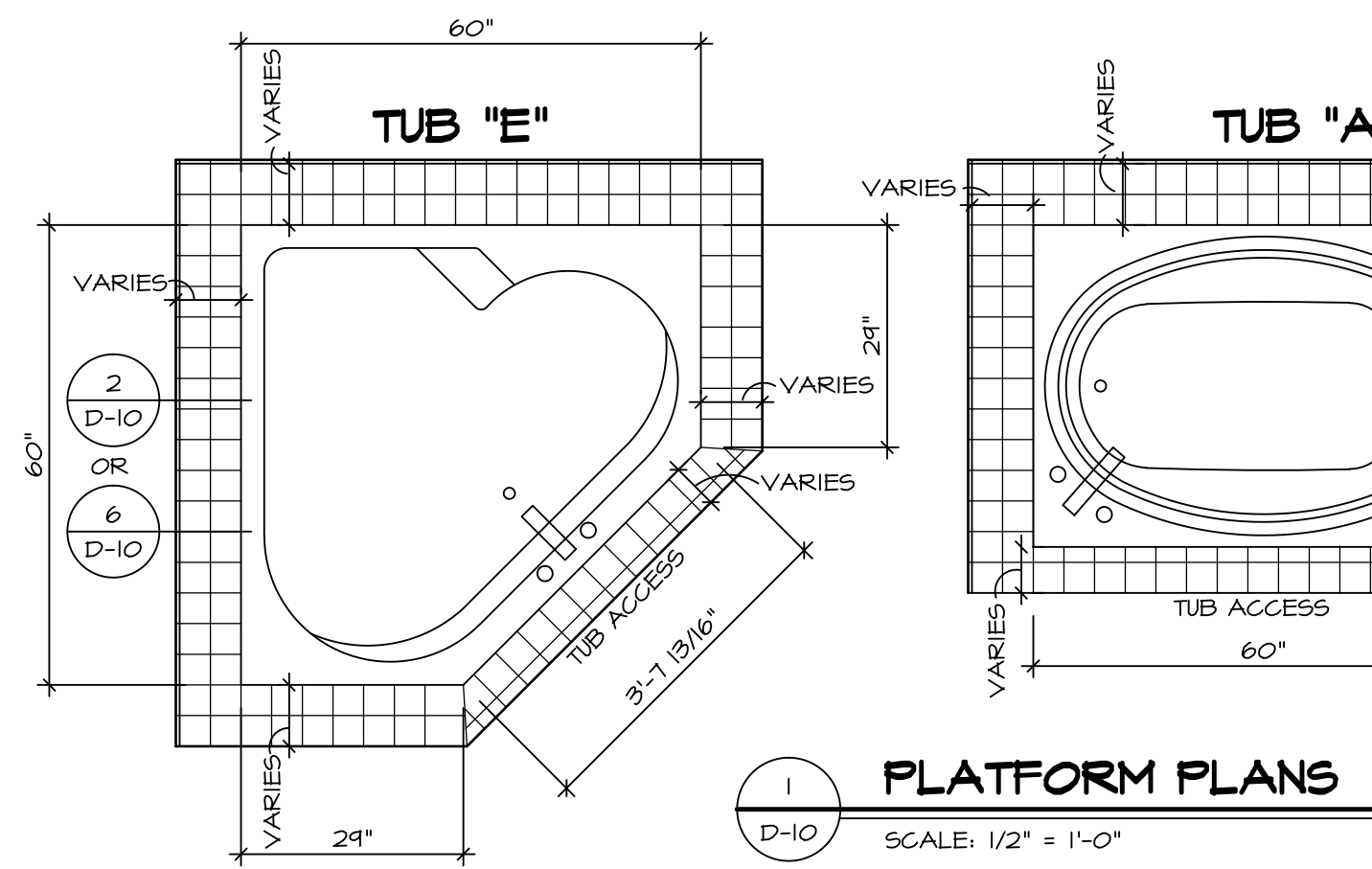
CABINET TRIM DETAIL

SCALE: 3/8" = 1'-0"

REV. NO.	DATE	REMARKS
1	11/22/16	DLR - KITCHEN PLAN DRAWING ALIGNMENT
2	8/20/13	DCM - REVISED REFRIGERATOR CABINET TO 24" DEEP
3	10/11/13	C98 - PROTOTYPE REVISIONS
4	10/25/13	C98 - CREATED VERSION 01
5	11/13/13	DCM - REV. RANGE/COOKTOP LOC. & ADJACENT CABINETS - TRIM MARKETING REV.
6	8/14/14	MBT - REVISED FRAMING FOR ISLAND AND COUNTER TOPS
7	4/15/15	JLR - FLIPPED ISLAND AND 36"/38" CABINETS ON BOTH SIDES OF RANGE/COOKTOP
8	5/12/15	JLR - ADD ENDCAPS TO KT-2960, 61, 62, DECREASED DEPTH OF 63 (PAR #B2928)
9	12/15/15	BEB - MODIFIED BASE CABINETS TO WORK W/ UPGRADE BASE TRIM (PAR #B3171)

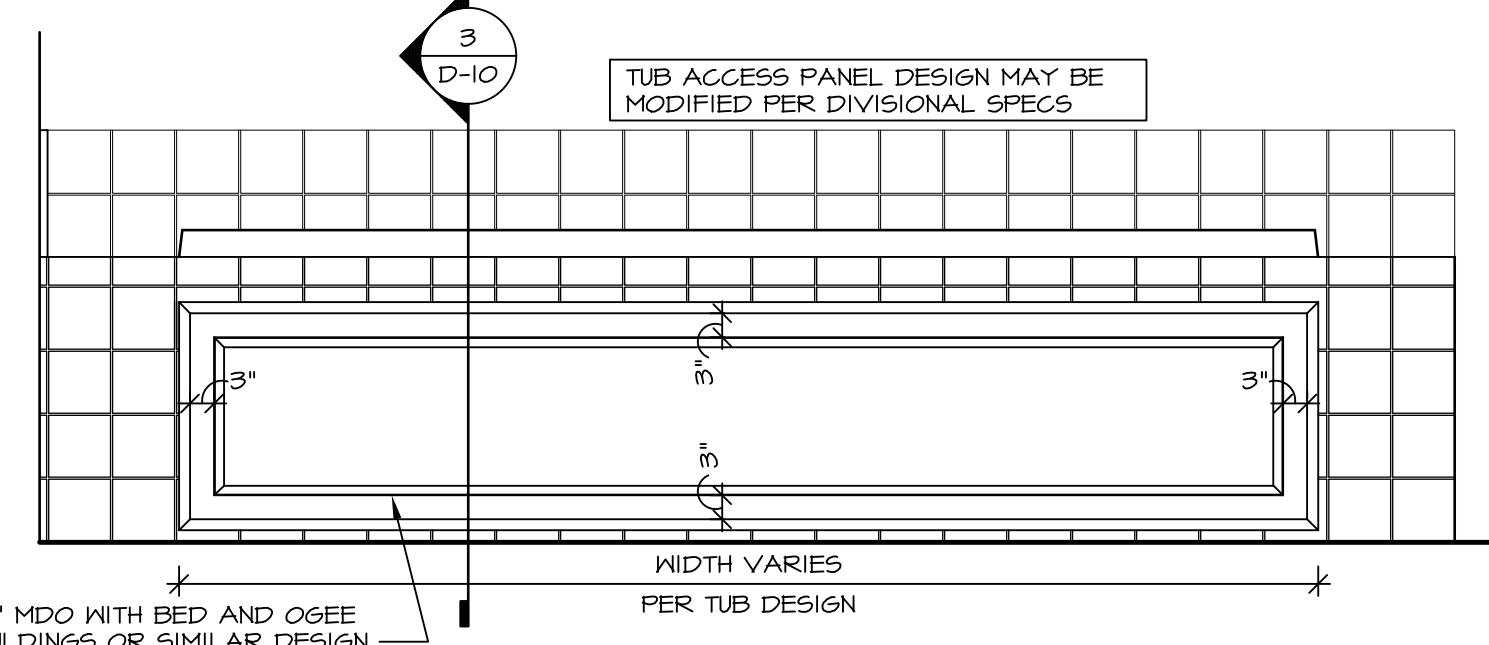


MODEL	LANDON
DRAWING TITLE	KITCHEN PLANS W/ MORNING ROOM
OPTION DESCRIPTION	MORNING ROOM
SHEET NO.	A-11
41	

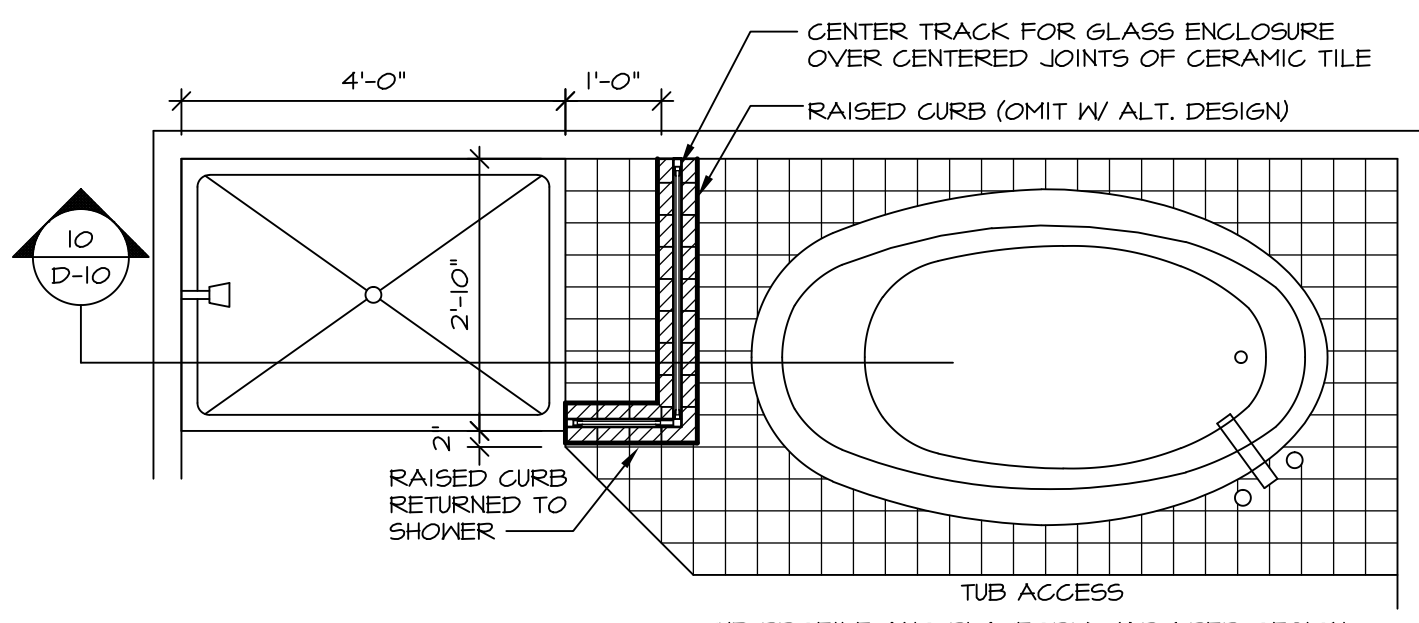


1 PLATFORM PLANS
D-10 SCALE: 1/2" = 1'-0"

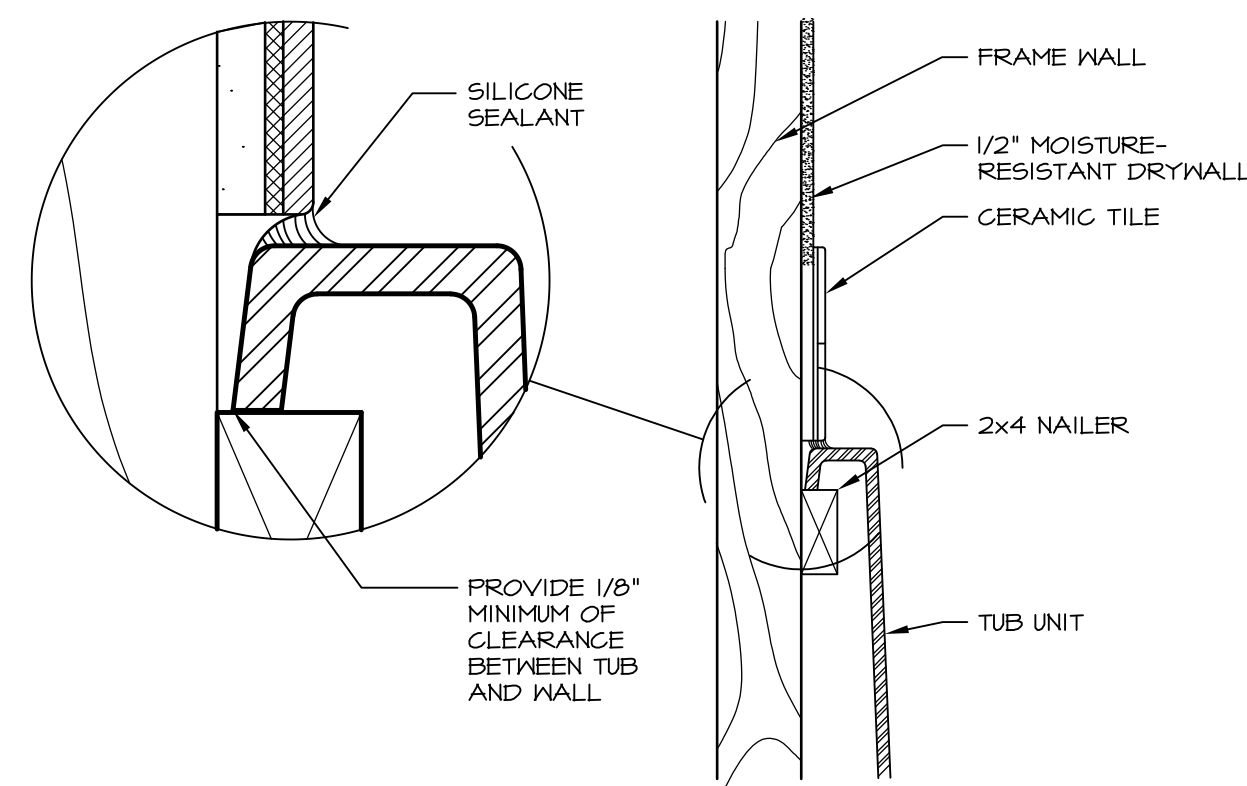
TUB	MANUF.	HEIGHT	WIDTH	LENGTH	TUB DECK PANEL HEIGHT
"A"	KOHLER/ STERLING	18 3/4"	42"	60"	17 1/8"
"C"	KOHLER/ STERLING	18 3/4"	36"	60"	17 1/8"
"E"	KOHLER/ STERLING	19 1/2"	60"	60"	17 7/8"
"L"	KOHLER/ STERLING	18 1/2"	42"	72"	16 7/8"
"N"	KOHLER/ STERLING	18 3/4"	36"	72"	17 1/8"



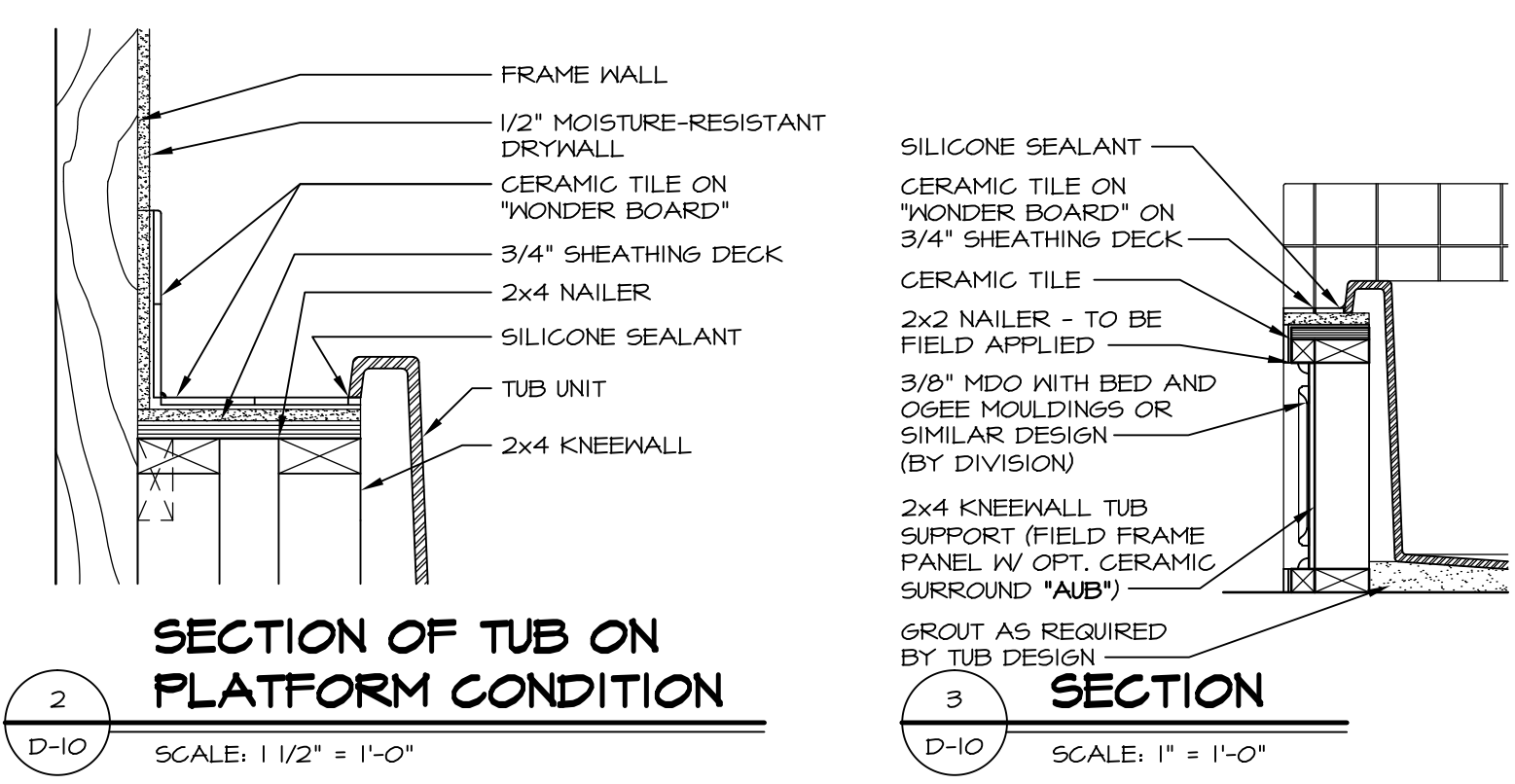
3 ELEVATION
D-10 SCALE: 1/2" = 1'-0"



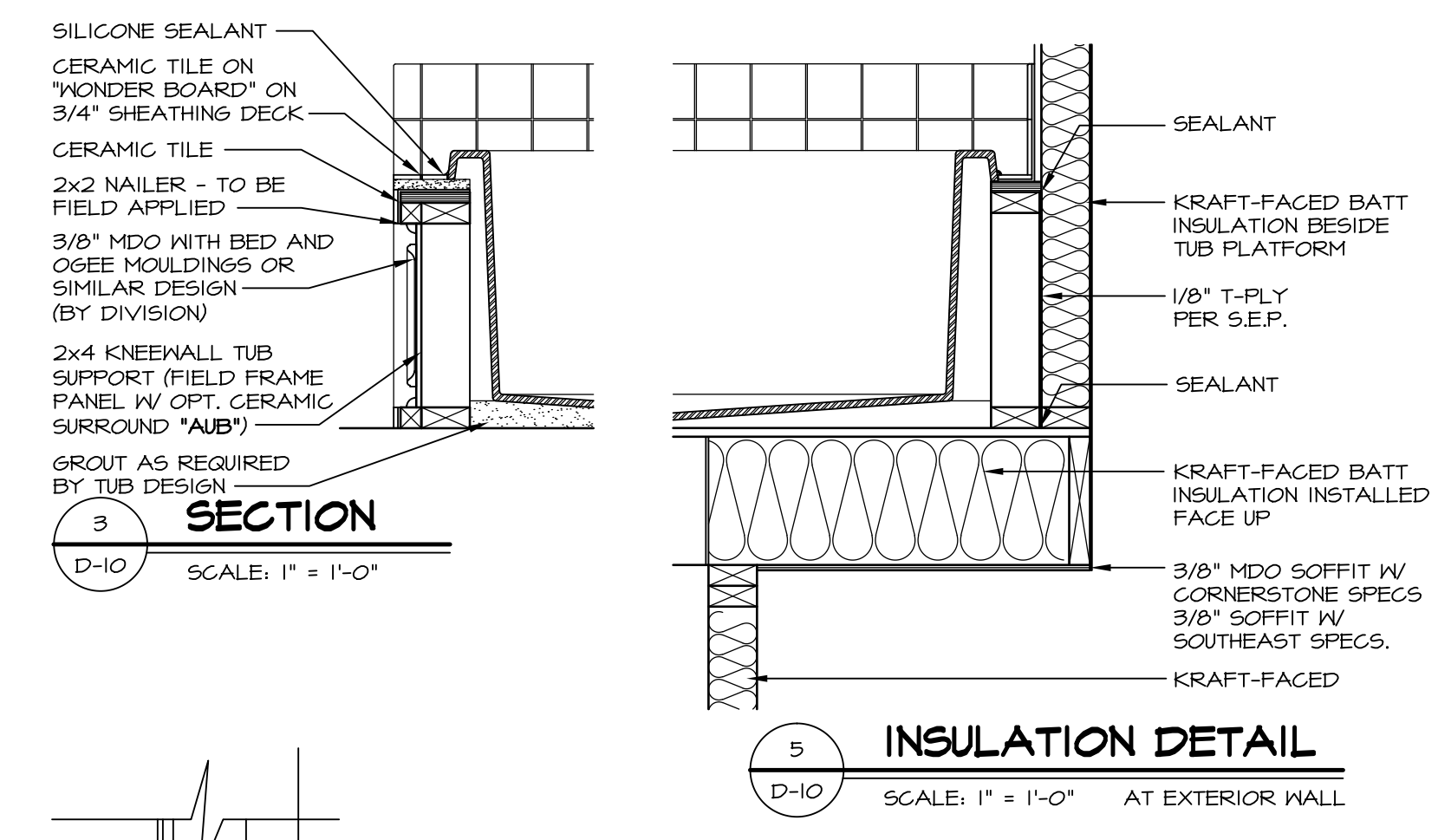
4 SHOWER SEAT PLAN / DETAIL
D-10 SCALE: 1/2" = 1'-0"



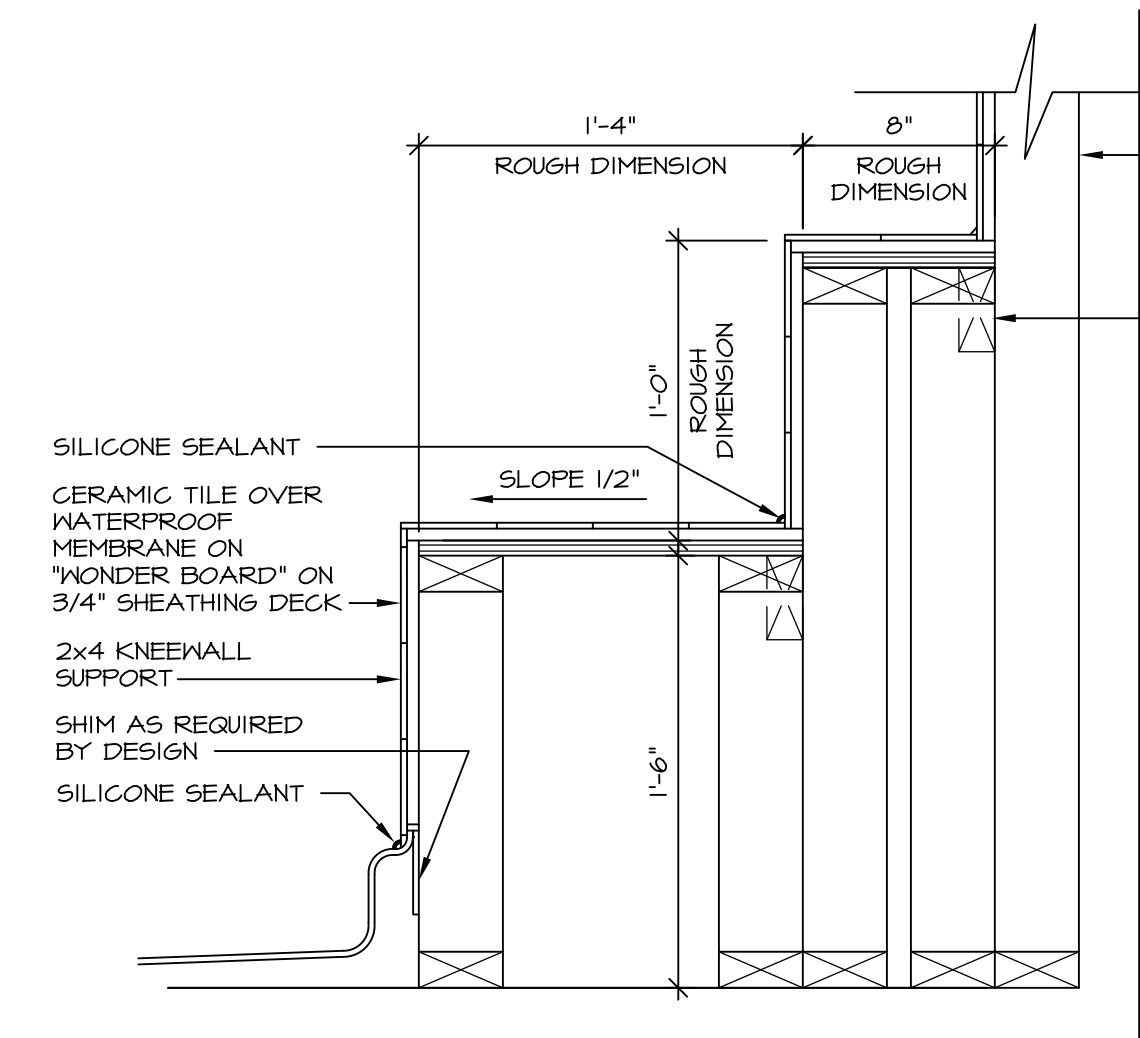
6 SECTION OF TUB TO WALL CONDITION
D-10 SCALE: 1 1/2" = 1'-0"



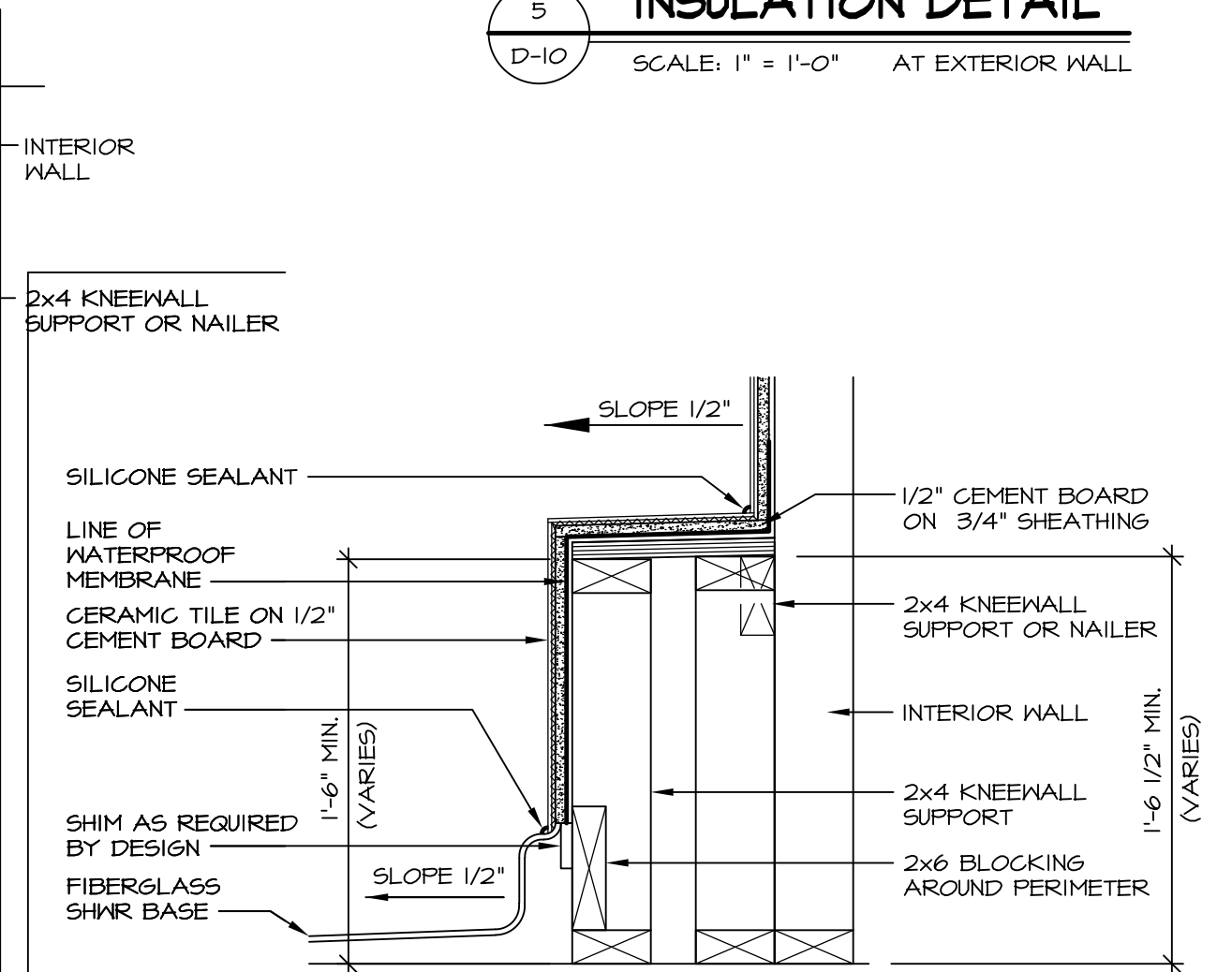
2 SECTION OF TUB ON PLATFORM CONDITION
D-10 SCALE: 1 1/2" = 1'-0"



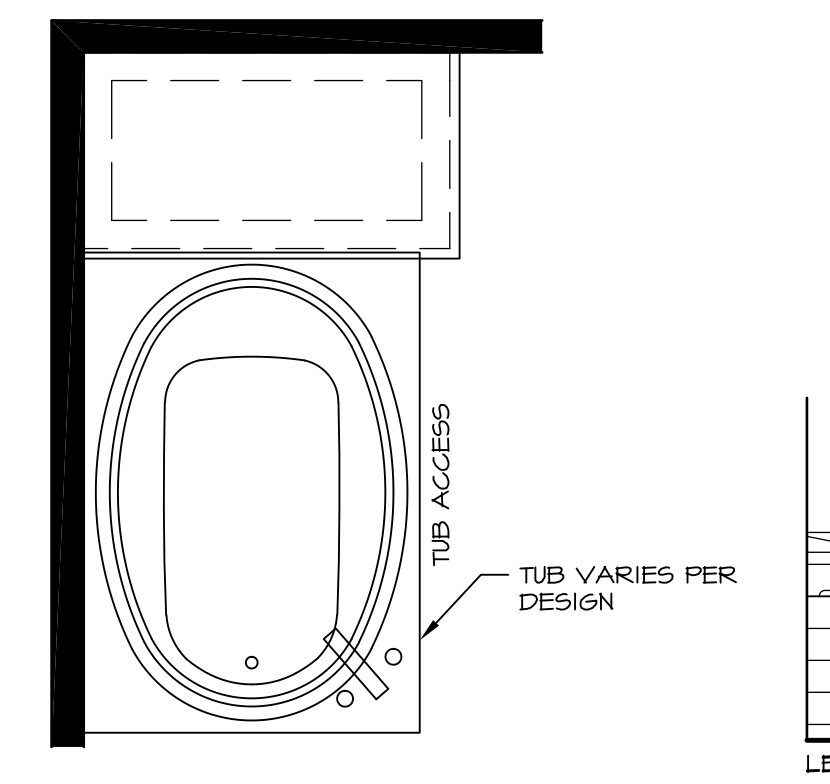
5 INSULATION DETAIL
D-10 SCALE: 1" = 1'-0" AT EXTERIOR WALL



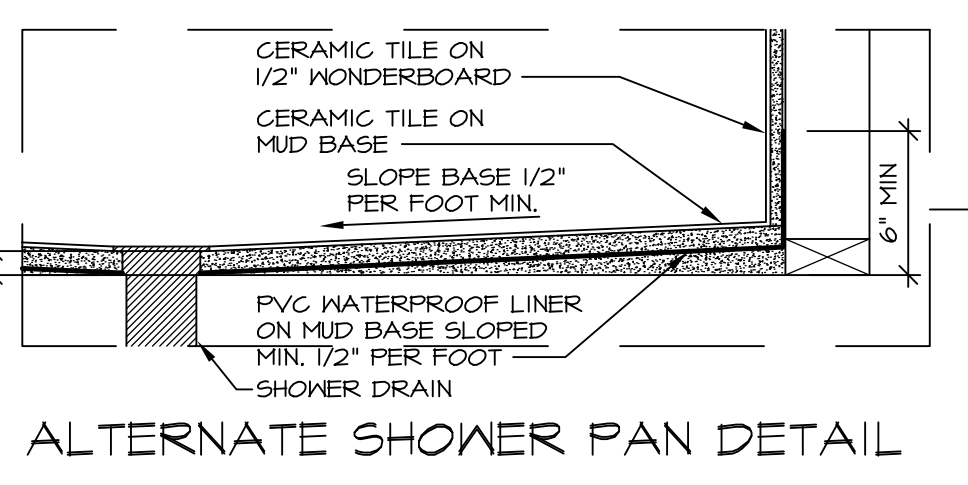
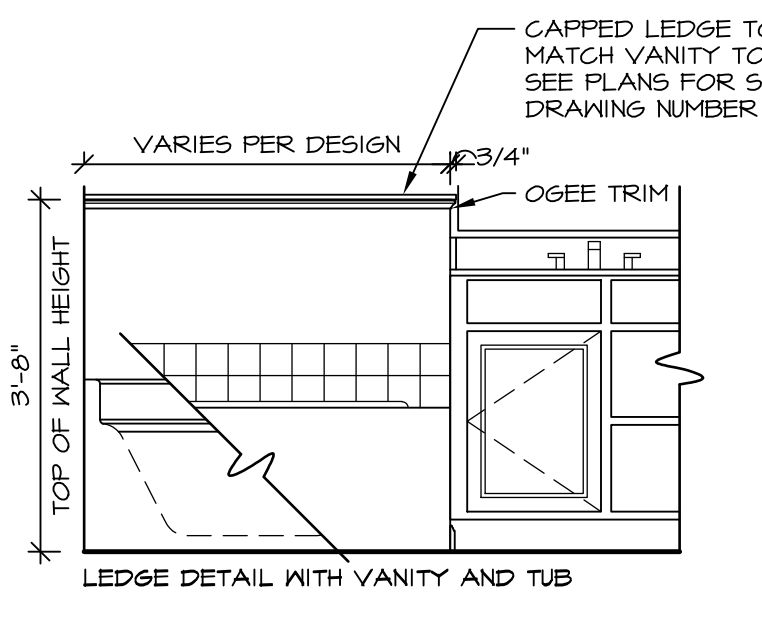
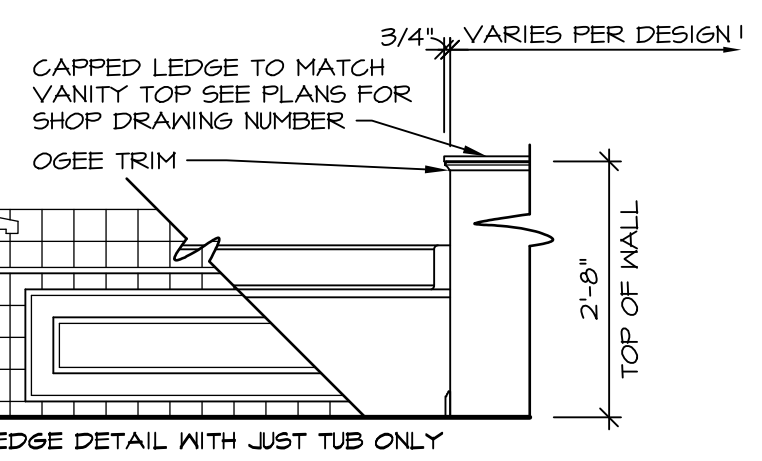
7 SECTION OF SHOWER SEAT AND SHELF
D-10 SCALE: 1 1/2" = 1'-0"



8 SECTION OF SHOWER SEAT
D-10 SCALE: 1-1/2" = 1'-0" FIBERGLASS SHOWER BASE

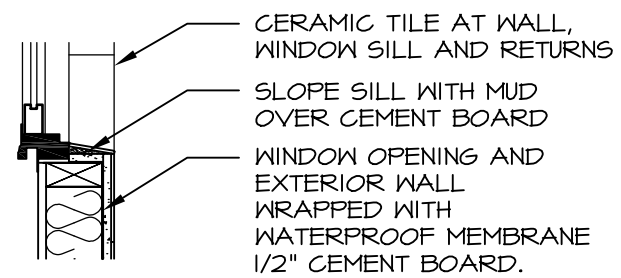


12 BATHROOM LEDGE DETAIL
D-10 SCALE: 1/2" = 1'-0"

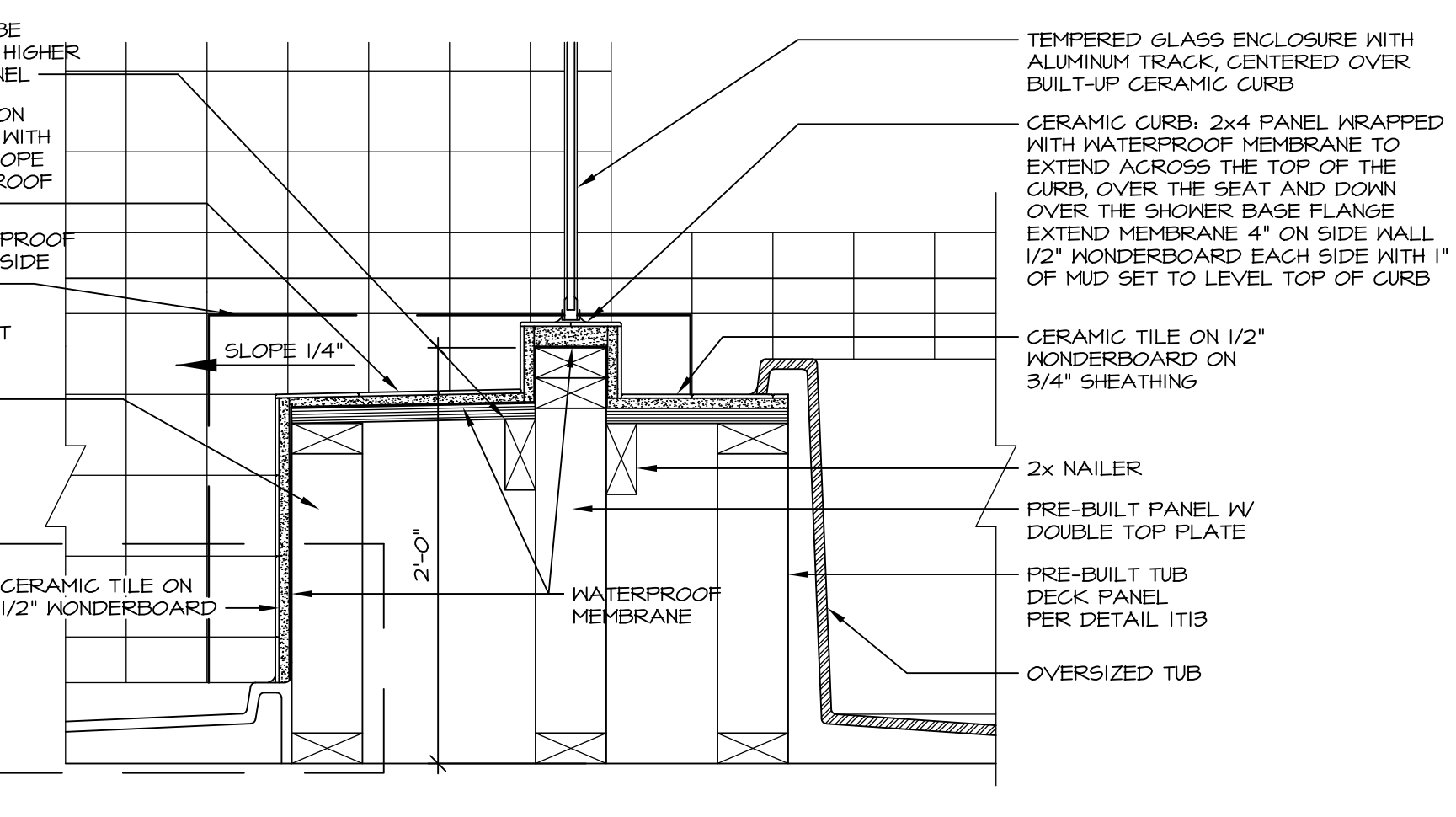


ALTERNATE SHOWER PAN DETAIL

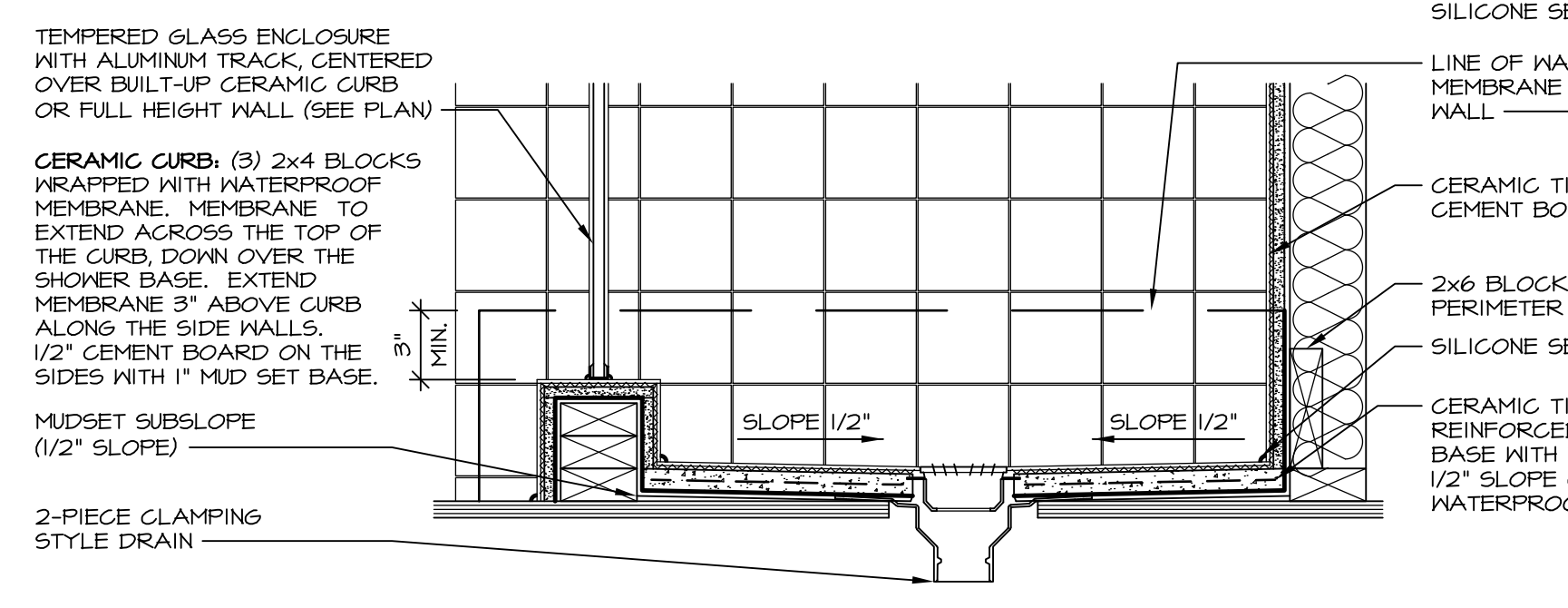
NOTES:
1. CONCRETE WONDERBOARD TO BE APPLIED HORIZONTALLY W/ FACTORY EDGE HELD 1/4" ABOVE SHEATHING DECK.
2. ALL OPENINGS CUT IN DRYWALL AND ALL CUT JOINTS SHALL BE SEALED W/ ADHESIVE OR MATERIAL RECEIVED BY MANUF.
3. ALL JOINTS TO RECEIVE A TAPE AND BLOCK COAT; NAIL HEADS TO RECEIVE ONE COAT ONLY.



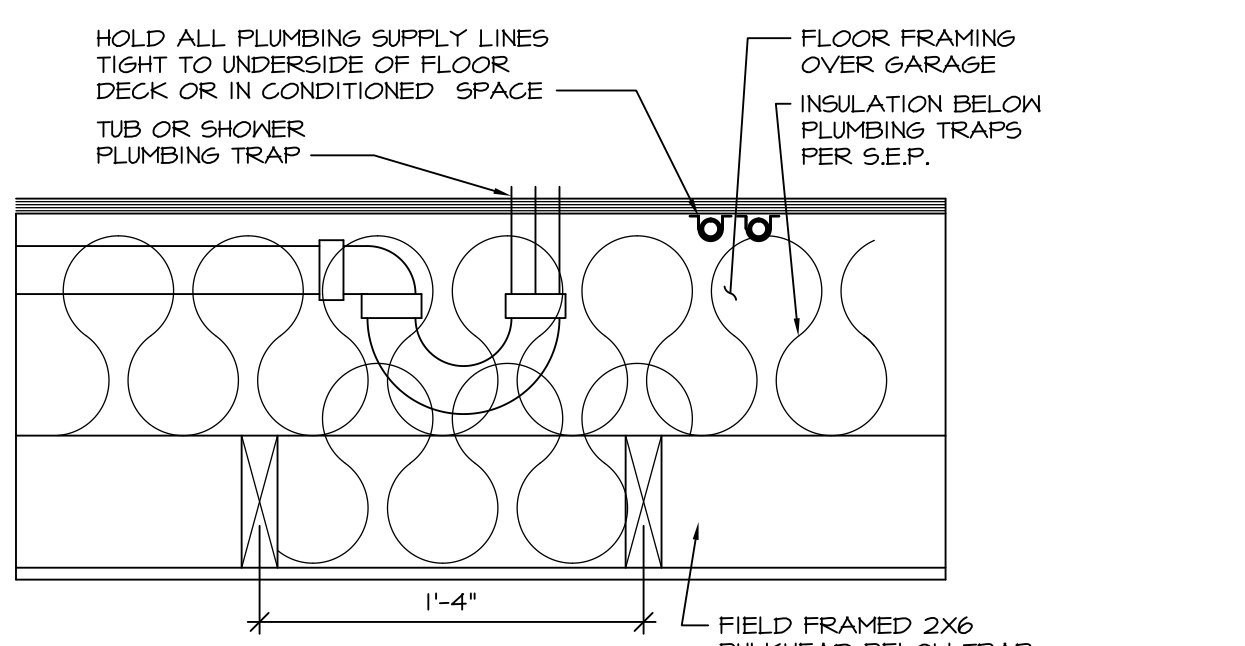
13 SILL DETAIL
D-10 SCALE: 1" = 1'-0"



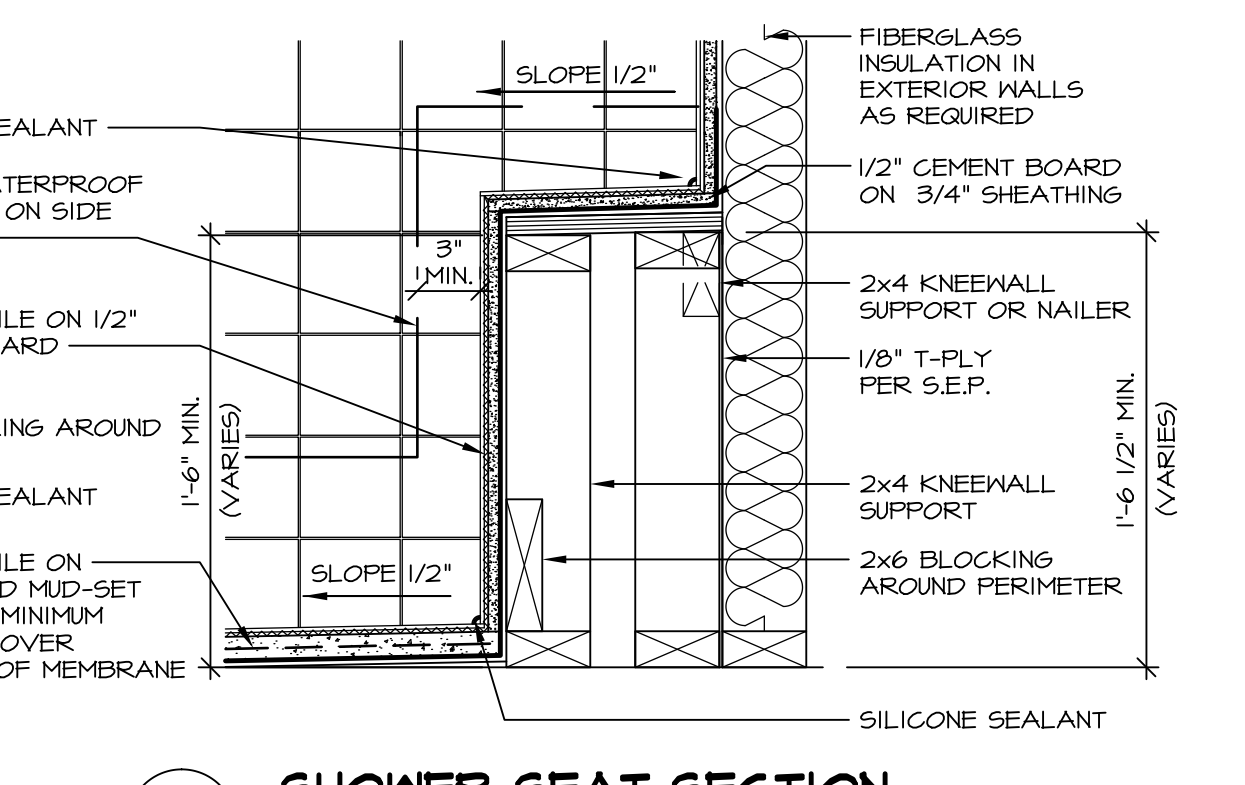
10 SHOWER SEAT SECTION
D-10 SCALE: 1-1/2" = 1'-0"



14 SHOWER SECTION
D-10 SCALE: 1 1/2" = 1'-0" MUD-SET



11 PLUMBING TRAP INSULATION
D-10 SCALE: 1 1/2" = 1'-0"



15 SHOWER SEAT SECTION
D-10 SCALE: 1 1/2" = 1'-0" MUD-SET SHOWER

REV.	NO.	DATE	REMARKS
30	1	7/16/13	CAB - REVISED DTLS 14 AND 15 FROM D-6 TO D-10
31	1	7/24/13	BK1 - REVISED PLYWOOD NOTE TO "SHEATHING"
32	1	3/25/14	CL5 - REVISED TUB BLOCKS AND PANEL HEIGHTS FOR PLATFORMS
33	1	5/27/14	CALB - REVISED SHOWER SEAT DETAILS
34	1	5/27/14	JLR - ADDED FAUCETS AND TUB ACCESS TO PLATFORM PLANS (PAR 18101)
35	1	11/2/15	6M6 - REV. DETAIL IT22 TO SHOW PANEL UNDER SHOWER ENCLOSURE (LO BUILT GIBER)
36	1	11/6/15	5M4 - ADDED NOTE TO FIELD FRAME PANEL W/ CERAMIC SURROUND (PAR 35948)
37	1	4/21/13	CEL - VERIFIED CURRENT CODE COMPLIANT
38	1	6/17/13	CAB - REVISED LAYOUT / ADDED DETAILS 14 AND 15

Ryan Homes
Architectural Services
210 N. Main Street
Thurmont, MD 21788

SHEET NO.	MODEL	SET NO.	CORNERSTONE
D-10 <td>STANDARD DETAILS <td>VERSION</td> <td>DRAWN BY ARG</td> </td>	STANDARD DETAILS <td>VERSION</td> <td>DRAWN BY ARG</td>	VERSION	DRAWN BY ARG
	UPGRADE TUB DETAILS <td>DATE: 08/31/14 <td>OPTION</td> </td>	DATE: 08/31/14 <td>OPTION</td>	OPTION