
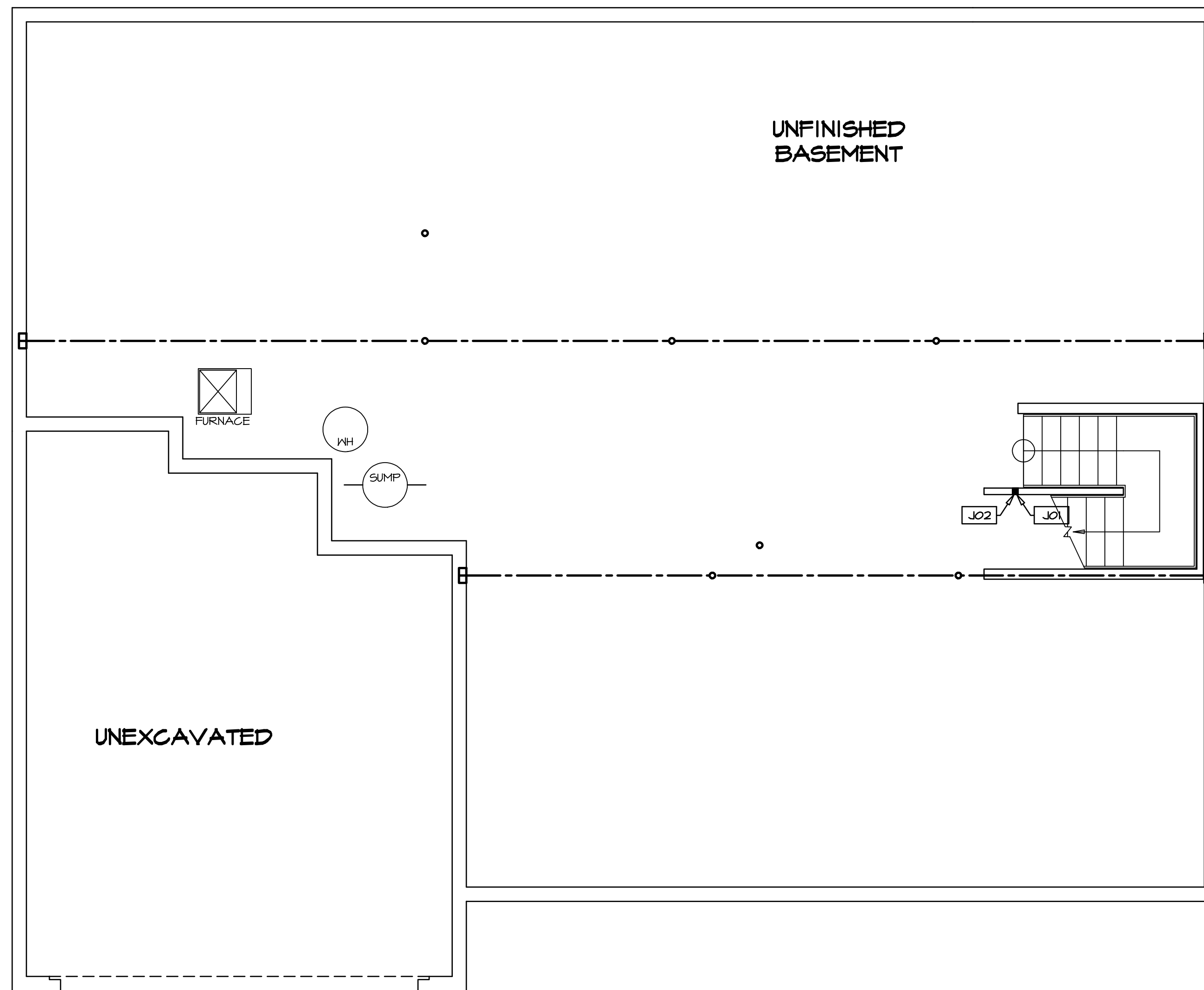


1 PLUMBING PLAN  
A-5 SCALE: 1/4" = 1'-0"

SHEET NO. <b>A-5</b> 31	MODEL <b>NORMANDY</b> DRAWING TITLE <b>PLUMBING PLAN</b> OPTION DESCRIPTION 31	SET NO. NRM00 VERSION 01 DRAWN BY RJC DATE: 5/14/15 OPTION	 NVR, Inc. Architectural Services Architects 21 Bay Street, Suite A Frederick, MD 21702	<p><small>NVR, Inc., owner, expressly reserves its copyright in these plans. These plans are not to be reproduced, changed, copied, or otherwise used in any way without the written consent of NVR, Inc.</small></p>	REV. NO. DATE REMARKS
-------------------------------	-----------------------------------------------------------------------------------------------	------------------------------------------------------------------------	---------------------------------------------------------------------------------------------------------------------------------------------------------------------------------------------	-----------------------------------------------------------------------------------------------------------------------------------------------------------------------------------------------------------------------	--------------------------



**LEGEND**

- BEARING WALL
- NON BEARING WALL
- INDICATES BEARING FROM POINT-LOAD ABOVE
- JACKS
- BEAM/HEADER
- PAD FOOTING
- STEEL COLUMN
- PORTAL FRAME
- JOIST/TRUSS
- LVL
- ENGINEERING PAGE NUMBER

SEE FC DETAILS FOR FRAMING CONNECTORS

- FLOOR PLAN NOTES**
- ALL HEADERS ARE (2) 2x6 w/ 2x4 WALLS OR (3) 2x6 w/ 2x6 WALLS, UNLESS OTHERWISE NOTED.
  - ALL HEADERS TO HAVE (1) 2x4 OR 2x6 JACK EACH END, UNLESS OTHERWISE NOTED.
  - ALL EXTERIOR WALLS TO BE 4" AND ALL INTERIOR WALLS TO BE 3 1/2", UNLESS OTHERWISE NOTED.
  - HATCHED AREAS INDICATE DROPPED CEILINGS. ALL DROPPED CEILINGS ARE 12" UNLESS OTHERWISE NOTED.
  - SEE "BRACED WALL PANEL DETAIL SHEET" FOR SPECIAL WALL FRAMING LOCATIONS AND HEADER SIZES, IF APPLICABLE.
  - SEE STANDARD DETAIL CATEGORY "IT" SHEET(S) FOR INTERIOR TRIM DETAILS.
  - SEE ARCHITECTURAL DETAIL SHEET "AD" FOR HOUSE SPECIFIC INTERIOR TRIM OPTION TABLE.
  - ALL WINDOWS HAVE 7'-0 1/2" HEADER HEIGHT UNLESS OTHERWISE NOTED.

- GYPSUM NOTES**
- AT GARAGE:  
GYPSUM BOARD AT COMMON WALLS, CEILING, BEAM WRAPS AND SUPPORTS PER STANDARD DETAIL FA-1(b) FIRE ASSEMBLIES OR AS REQUIRED BY LOCAL CODE.
- AT STAIRS:  
1/2" GYPSUM BOARD AT UNDERSIDE OF STAIRS AND WALLS IN CLOSET

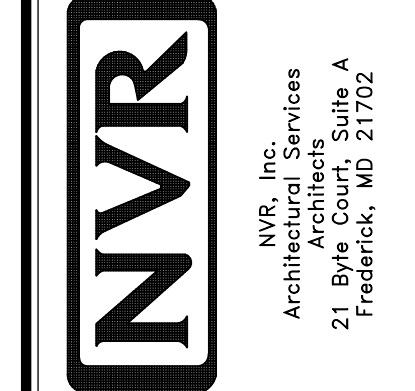
**BASEMENT JACK SCHEDULE**

IDENTIFIER	DESCRIPTION	OPTIONS	ENG. NUM.	REMARKS
JO1	JACK - 2x4 SFF STUD GRADE		B10	
JO2	JACK - 2x4 SFF STUD GRADE		B22	

**REV. NO. | DATE | DESCRIPTION**

REV. NO.	DATE	DESCRIPTION
1	08/07/16	NL - DRAWING ALIGNMENT
2	11/05/16	TH - STANDARD DETAILS 3.0
3	4/20/17	SFK - ADDED BASEMENT FLOOR PLAN JACK SCHEDULE

NVR, Inc., owner, expressly reserves its copyright in these plans. These plans are not to be reproduced, changed, copied in any way, or used for any other project without the written consent of NVR, Inc.



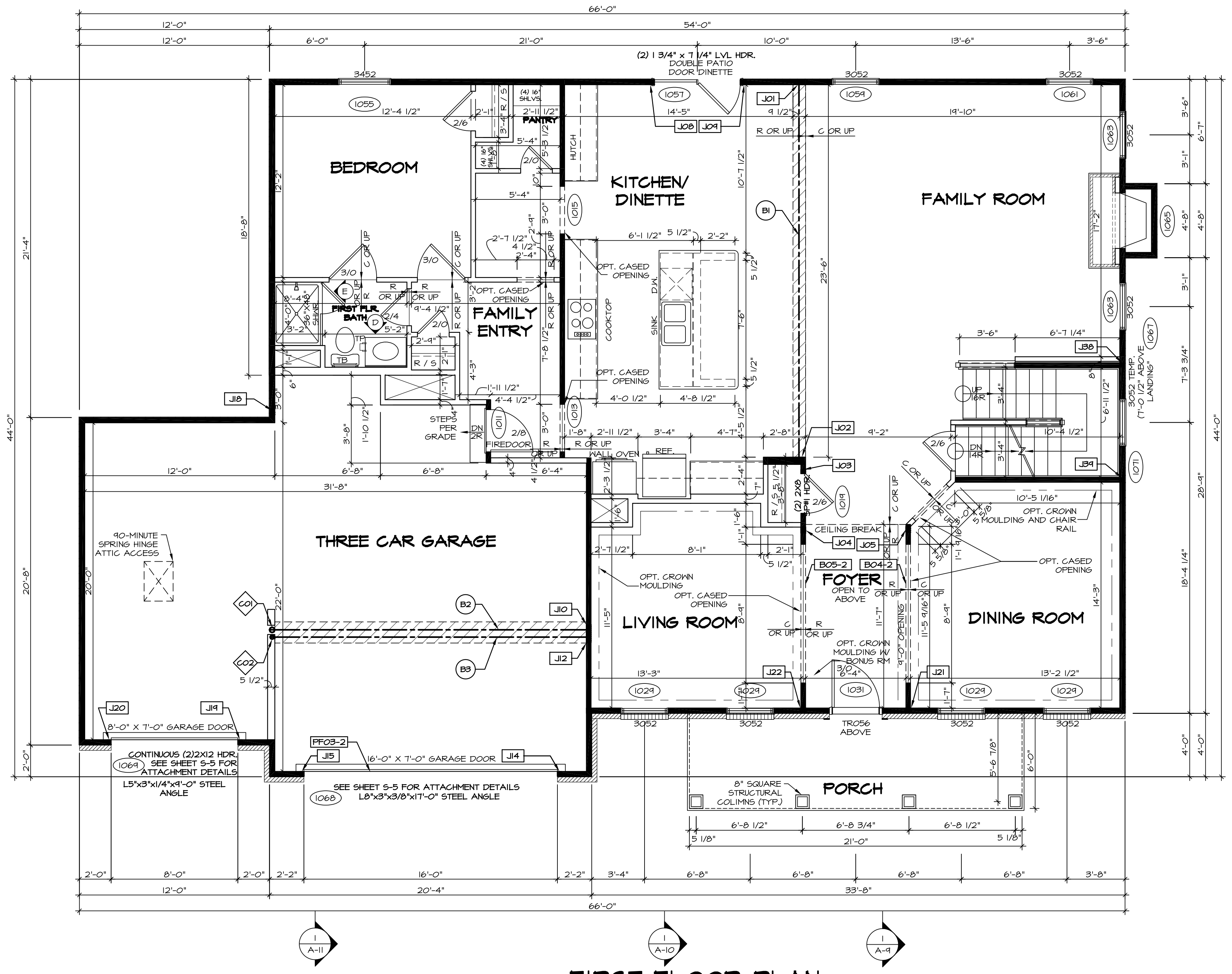
SET NO. NRM00  
VERSION 01  
DRAWN BY SGA  
DATE: 6/29/15  
OPTION

MODEL: NORMANDY  
DRAWING TITLE: BASEMENT FLOOR PLAN  
OPTION DESCRIPTION:

SHEET NO. A-6  
34



**BASEMENT FLOOR PLAN**  
SCALE: 1/4" = 1'-0"



**FIRST FLOOR PLAN**  
SCALE: 1/4" = 1'-0"

**LEGEND**

- BEARING WALL
- - - NON BEARING WALL
- ⊗ INDICATES BEARING FROM POINT-LOAD ABOVE
- J JACKS
- B BEAM/HEADER
- F PAD FOOTING
- ◇ STEEL COLUMN
- X PORTAL FRAME
- X JOIST/TRUSS
- LVL
- ENGINEERING PAGE NUMBER

SEE FC DETAILS FOR FRAMING CONNECTORS

- FLOOR PLAN NOTES** RYAN
- ALL HEADERS ARE (2) 2x6 w/ 2x4 WALLS OR (3) 2x6 w/ 2x6 WALLS, UNLESS OTHERWISE NOTED.
  - ALL HEADERS TO HAVE (1) 2x4 OR 2x6 JACK AND KING STUD EACH END, UNLESS OTHERWISE NOTED.
  - ALL EXTERIOR WALLS TO BE 4" w/ OSB OR 3 1/2" w/ T-PLY. ALL INTERIOR WALLS TO BE 3 1/2", UNLESS OTHERWISE NOTED.
  - HATCHED AREAS INDICATE DROPPED CEILING. ALL DROPPED CEILING ARE 12" UNLESS OTHERWISE NOTED.
  - SEE "BRACED WALL PANEL DETAIL SHEET" FOR SPECIAL WALL FRAMING LOCATIONS AND HEADER SIZES, IF APPLICABLE.
  - SEE STANDARD DETAIL CATEGORY "IT" SHEET(S) FOR INTERIOR TRIM DETAILS.
  - SEE ARCHITECTURAL DETAIL SHEET "AD" FOR HOUSE SPECIFIC INTERIOR TRIM OPTION TABLE.
  - ALL WINDOWS HAVE 7'-0 1/2" HEADER HEIGHT UNLESS OTHERWISE NOTED.
  - ALL HEADERS IN NON-BEARING WALLS SHALL BE A SINGLE FLAT 2x4 OR 2x6 ATTACHED TO CRIPPLES ABOVE, UNLESS OTHERWISE NOTED.

- GYPSUM NOTES** RYAN
- AT GARAGE:**  
GYPSUM BOARD AT COMMON WALLS, CEILING, BEAM WRAPS AND SUPPORTS PER STANDARD DETAIL FA-10b FIRE ASSEMBLIES OR AS REQUIRED BY LOCAL CODE.
- AT STAIRS:**  
1/2" GYPSUM BOARD AT UNDERSIDE OF STAIRS AND WALLS IN CLOSET

**STEEL COLUMN SCHEDULE**

IDENTIFIER	STYLE	HEIGHT	OPTIONS	ENG. NUM.	REMARKS
CO1	STANCHION - 4 IN DIA 11GA ADJ	9'-0 1/8"	GCF, FBA	1023	
CO2	STANCHION - 3 IN DIA 11GA ADJ	9'-0 1/8"	GCF, FBA, EVA	1025	

- LVL PLY TO PLY FASTENING SCHEDULE:** (WHERE APPLICABLE BASED ON LVL USAGE)
- 1A - (2) PLY UP TO AND INCLUDING 11 7/8" TALL; FASTEN FLIES W/ (2) ROWS 16D NAILS AT 12" O.C.
  - 2A - (2) PLY 14" TO AND 18" TALL (INCLUSIVE); FASTEN FLIES W/ (3) ROWS 16D NAILS AT 12" O.C.
  - 3A - (2) PLY 20" TALL AND OVER; FASTEN FLIES W/ (4) ROWS 16D NAILS AT 12" O.C.
  - 4A - (3) PLY UP TO AND INCLUDING 11 7/8" TALL; FASTEN FLIES W/ (2) ROWS 16D NAILS AT 12" O.C. FROM EACH SIDE
  - 5A - (3) PLY 14" TO AND 18" TALL (INCLUSIVE); FASTEN FLIES W/ (3) ROWS 16D NAILS AT 12" O.C. FROM EACH SIDE
  - 6A - (3) PLY 20" TALL AND OVER; FASTEN FLIES W/ (4) ROWS 16D NAILS AT 12" O.C. FROM EACH SIDE
  - 7A - (4) PLY (ALL SIZES); FASTEN FLIES W/ (2) ROWS 1/2" DIAMETER A307 BOLTS AT 24" O.C. SEE SHOP DRAWING FOR ADDITIONAL INFORMATION.

**FIELD INSTALLED FIRST FLOOR BEAM/HEADER SCHEDULE**

IDENTIFIER	DESCRIPTION	LENGTH	OPTIONS	ENG. NUM.	REMARKS
B04-2	LVL - 11-14	11'-4 1/16"	SRM, SQK, SQL, ELA, ELK	1017	1A
B05-2	LVL - 11-14	11'-8 1/2"	SRM, SQK, SQL, ELA, ELK	1017	1A
B1	BEAM STEEL - W12X35	24'-2"		1021	
B2	BEAM STEEL - W12X26	20'-2 1/2"		1023	
B3	BEAM STEEL - W12X22	20'-2 1/2"	EVA	1025	
PF03-2	LVL - 11-04	20'-0"	GCF	1043	PORTAL FRAME, 1A

**FIRST FLOOR JACK SCHEDULE**

IDENTIFIER	DESCRIPTION	OPTIONS	ENG. NUM.	REMARKS
J01	JACK - (5) 2X4 SFF#1		1021	
J02	JACK - (5) 2X6 SFF#1		1021	
J03	JACK - (2) 2X4 SFF STUD GRADE		1019	
J04	JACK - (3) 2X4 SFF STUD GRADE		1017	
J05	JACK - (3) 2X4 SFF STUD GRADE		1017	
J06	JACK - (2) 2X4 SFF STUD GRADE		1051	
J07	JACK - (2) 2X4 SFF STUD GRADE		1051	
J10	JACK - (5) 2X4 SFF#1		1023	
J12	JACK - (4) 2X4 SFF STUD GRADE	EVA	1023	
J14	JACK - (2) 2X4 SFF STUD GRADE	GCB, GCF	1043	
J15	JACK - (2) 2X4 SFF STUD GRADE	GCB, GCF	1043	
J16	JACK - (2) 2X4 SFF STUD GRADE	GCF	1043	
J19	JACK - (2) 2X4 SFF STUD GRADE	GCF	1043	
J20	JACK - (2) 2X4 SFF STUD GRADE	GCF	1043	
J21	JACK - (3) 2X4 SFF STUD GRADE	SRM, SQK, SQL, ELA, ELB, ELK	1017	
J22	JACK - (3) 2X4 SFF STUD GRADE	SRM, SQK, SQL, ELA, ELB, ELK	1017	
J38	JACK - (2) 2X4 SFF STUD GRADE		1007	
J39	JACK - (2) 2X4 SFF STUD GRADE		1007	

**REMARKS**

REV. NO. DATE DESCRIPTION

1 08/07/16 N - DRAWING ALIGNMENT

2 10/05/16 TM - STANDARD DETAILS 3.0

3 07/11/17 SLS - T-PLY CONVERSION PROJECT

**MODEL**  
NORMANDY ARCHITECTS

**DRAWING TITLE**  
FIRST FLOOR PLAN

**OPTION DESCRIPTION**

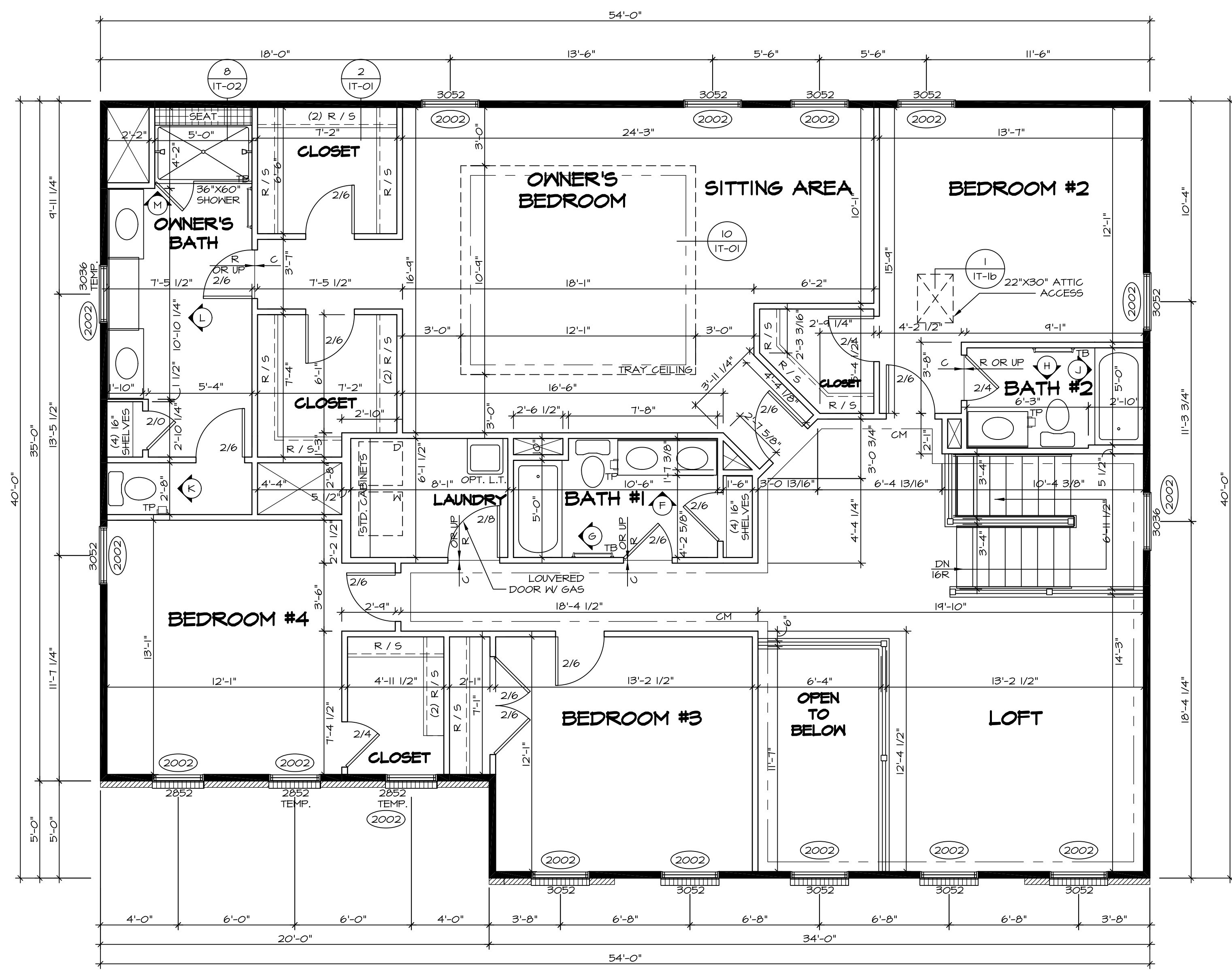
**SHEET NO.**  
A-7

**35**

**NVR**  
NVR, Inc.  
Architectural Services  
21 Bay Street, Suite A  
Frederick, MD 21702

NVR, Inc., owner, expressly reserves its common law copyright in these plans. These plans are not to be reproduced, changed, photocopied, or otherwise used without the written consent of NVR, Inc.

C:\NVR\Solves\NORMANDY\_ARCH\00\_01\DCI-BI-0241\_55026\_Sheets\01\_Specific\35\_A-7\_Plan\_15.dwg 09/13/17 - 5:02 am



**LEGEND**

- BEARING WALL
- NON BEARING WALL
- INDICATES BEARING FROM POINT-LOAD ABOVE
- JACKS
- BEAM/HEADER
- PAD FOOTING
- STEEL COLUMN
- PORTAL FRAME
- JOIST/TRUSS
- LVL
- ENGINEERING PAGE NUMBER

SEE FC DETAILS FOR FRAMING CONNECTORS

- FLOOR PLAN NOTES** RYAN
- ALL HEADERS ARE (2) 2x6 w/ 2x4 WALLS OR (3) 2x6 w/ 2x6 WALLS, UNLESS OTHERWISE NOTED.
  - ALL HEADERS TO HAVE (1) 2x4 OR 2x6 JACK AND KING STUD EACH END, UNLESS OTHERWISE NOTED.
  - ALL EXTERIOR WALLS TO BE 4" w/ OSB OR 3 1/2" w/ T-PLY, ALL INTERIOR WALLS TO BE 3 1/2", UNLESS OTHERWISE NOTED.
  - HATCHED AREAS INDICATE DROPPED CEILINGS, ALL DROPPED CEILINGS ARE 12" UNLESS OTHERWISE NOTED.
  - SEE "BRACED WALL PANEL DETAIL SHEET" FOR SPECIAL WALL BRACING LOCATIONS AND HEADER SIZES, IF APPLICABLE.
  - SEE STANDARD DETAIL CATEGORY "IT" SHEET(S) FOR INTERIOR TRIM DETAILS.
  - SEE ARCHITECTURAL DETAIL SHEET "AD" FOR HOUSE SPECIFIC INTERIOR TRIM OPTION TABLE.
  - ALL WINDOWS HAVE 7'-0" 1/2" HEADER HEIGHT UNLESS OTHERWISE NOTED.
  - ALL HEADERS IN NON-BEARING WALLS SHALL BE A SINGLE FLAT 2x4 OR 2x6 ATTACHED TO GRIFFLES ABOVE, UNLESS OTHERWISE NOTED.

**SECOND FLOOR JACK SCHEDULE**

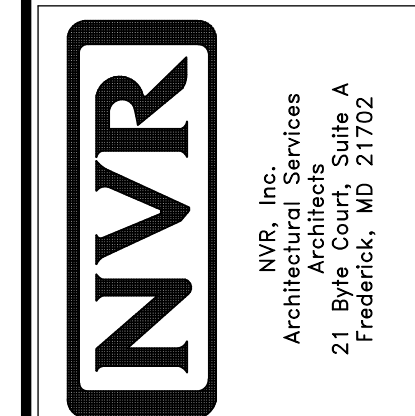
IDENTIFIER	DESCRIPTION	OPTIONS	ENG. NUM.	REMARKS

**SECOND FLOOR PLAN**  
SCALE: 1/4" = 1'-0"

**REMARKS**

REV. NO.	DATE	DESCRIPTION
1	08/07/16	N - DRAWING ALIGNMENT
2	11/05/16	TH - STANDARD DETAILS 3.0
3	07/17/17	SLS - T-PLY CONVERSION PROJECT

NVR, Inc., owner, expressly reserves its common law copyright in these plans. These plans are not to be reproduced, changed, copied in any way, or otherwise used without the written consent of NVR, Inc.



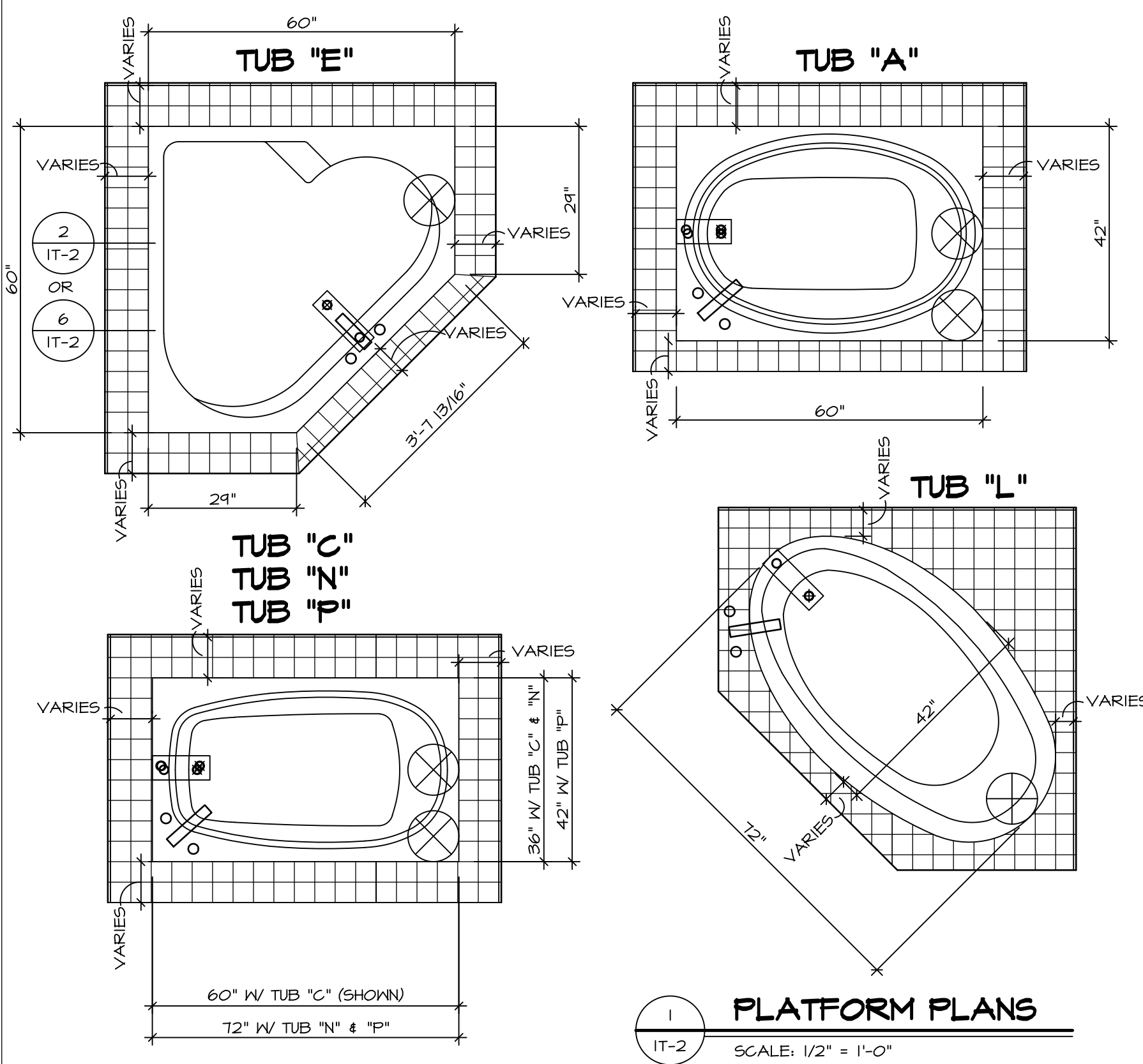
SET NO. NRM00	VERSION 01
DRAWN BY SGA	DATE: 6/29/15
OPTION	

**MODEL**  
**NORMANDY**

**DRAWING TITLE**  
**SECOND FLOOR PLAN**

**OPTION DESCRIPTION**



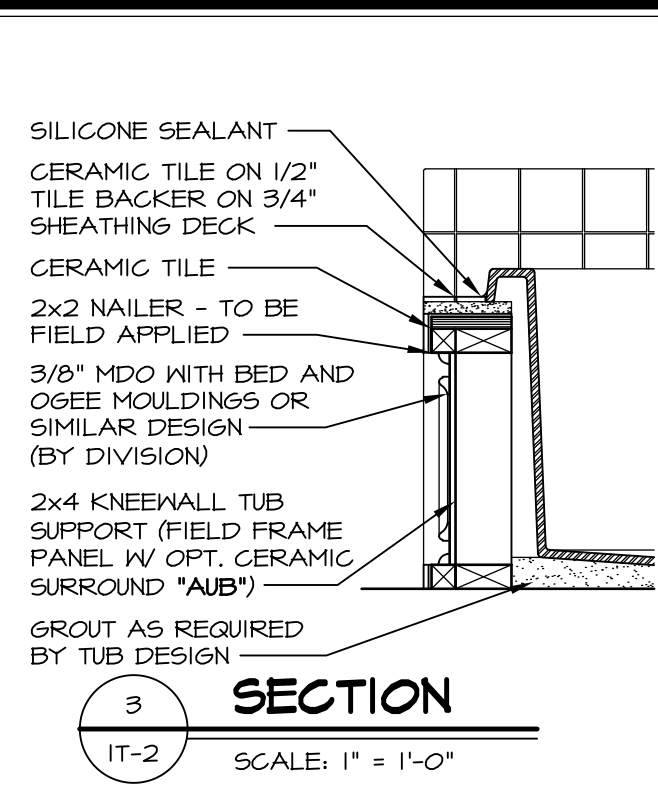


**1 PLATFORM PLANS**  
SCALE: 1/2" = 1'-0"

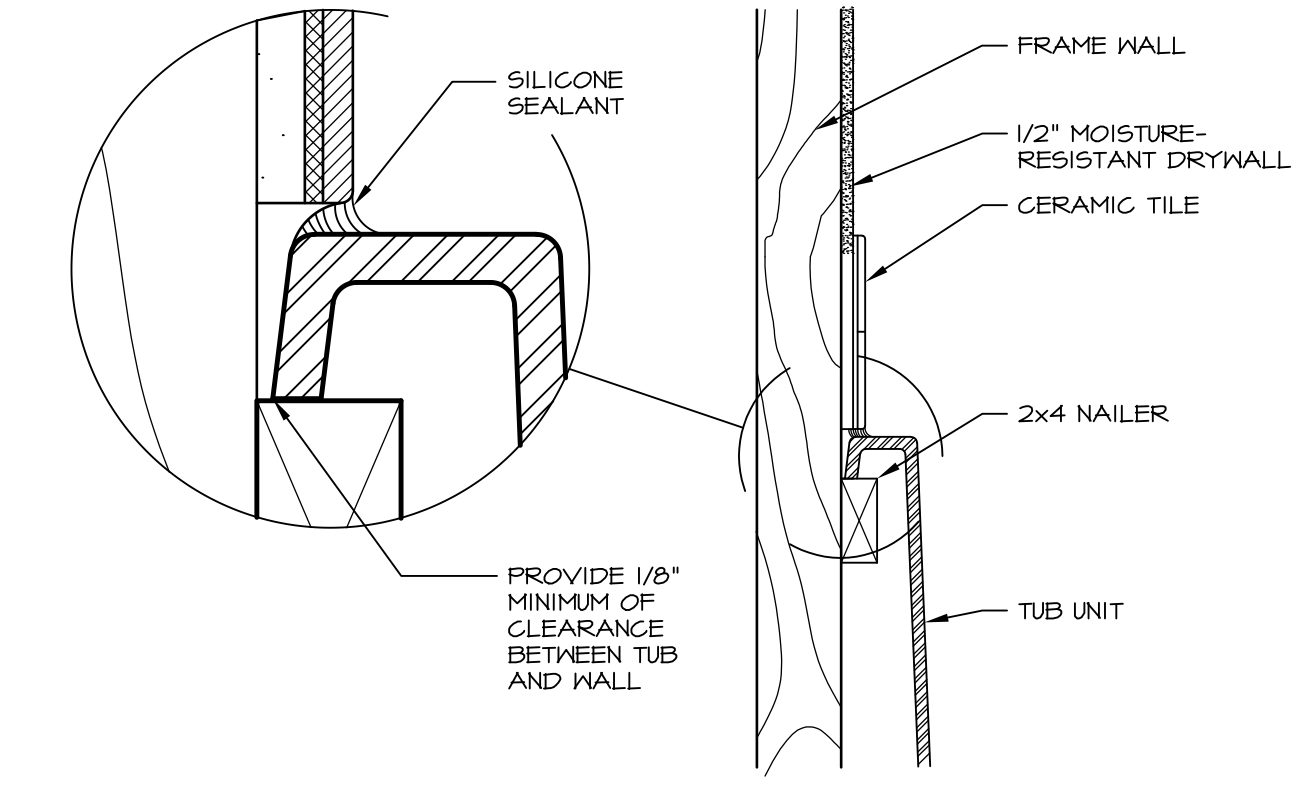
TUB	MANUF.	HEIGHT	WIDTH	LENGTH	TUB DECK PANEL HEIGHT
"A"	KOHLER/ STERLING	18 3/4"	42"	60"	17 1/8"
"C"	KOHLER/ STERLING	18 3/4"	36"	60"	17 1/8"
"E"	KOHLER/ STERLING	19 1/2"	60"	60"	17 7/8"
"L"	KOHLER/ STERLING	18 1/2"	42"	72"	16 7/8"
"N"	KOHLER/ STERLING	18 3/4"	36"	72"	17 1/8"
"P"	KOHLER/ STERLING	18 3/4"	42"	72"	17 1/8"



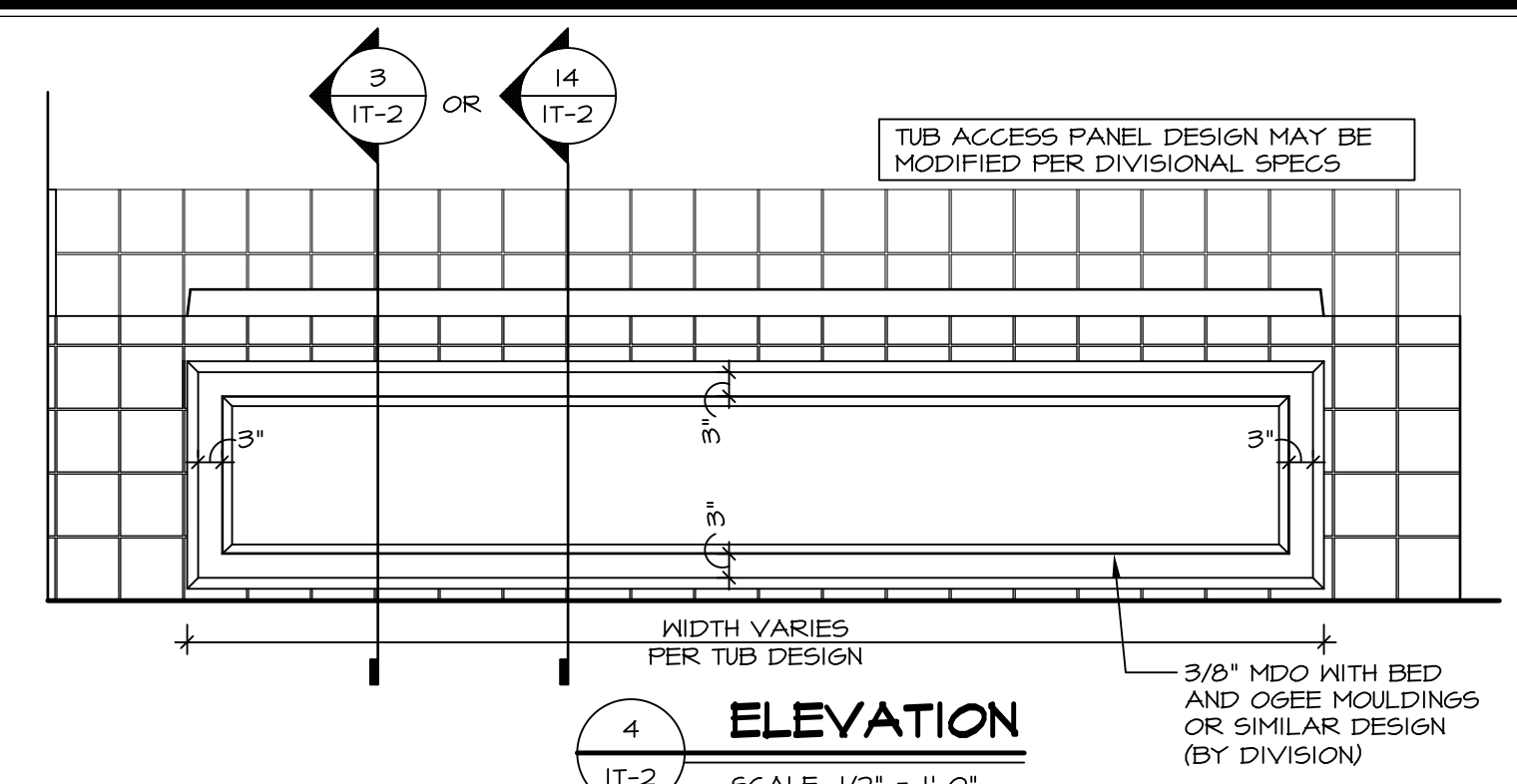
**2 SECTION OF TUB ON PLATFORM CONDITION**  
SCALE: 1" = 1'-0"



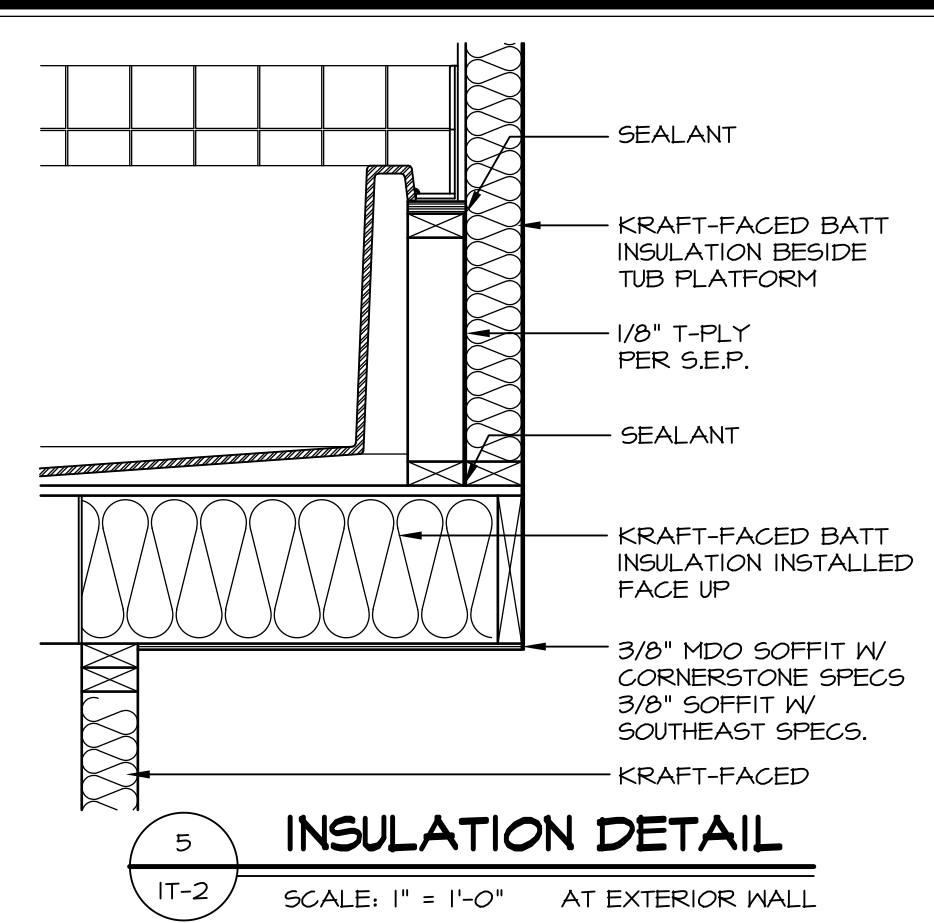
**3 SECTION**  
SCALE: 1" = 1'-0"



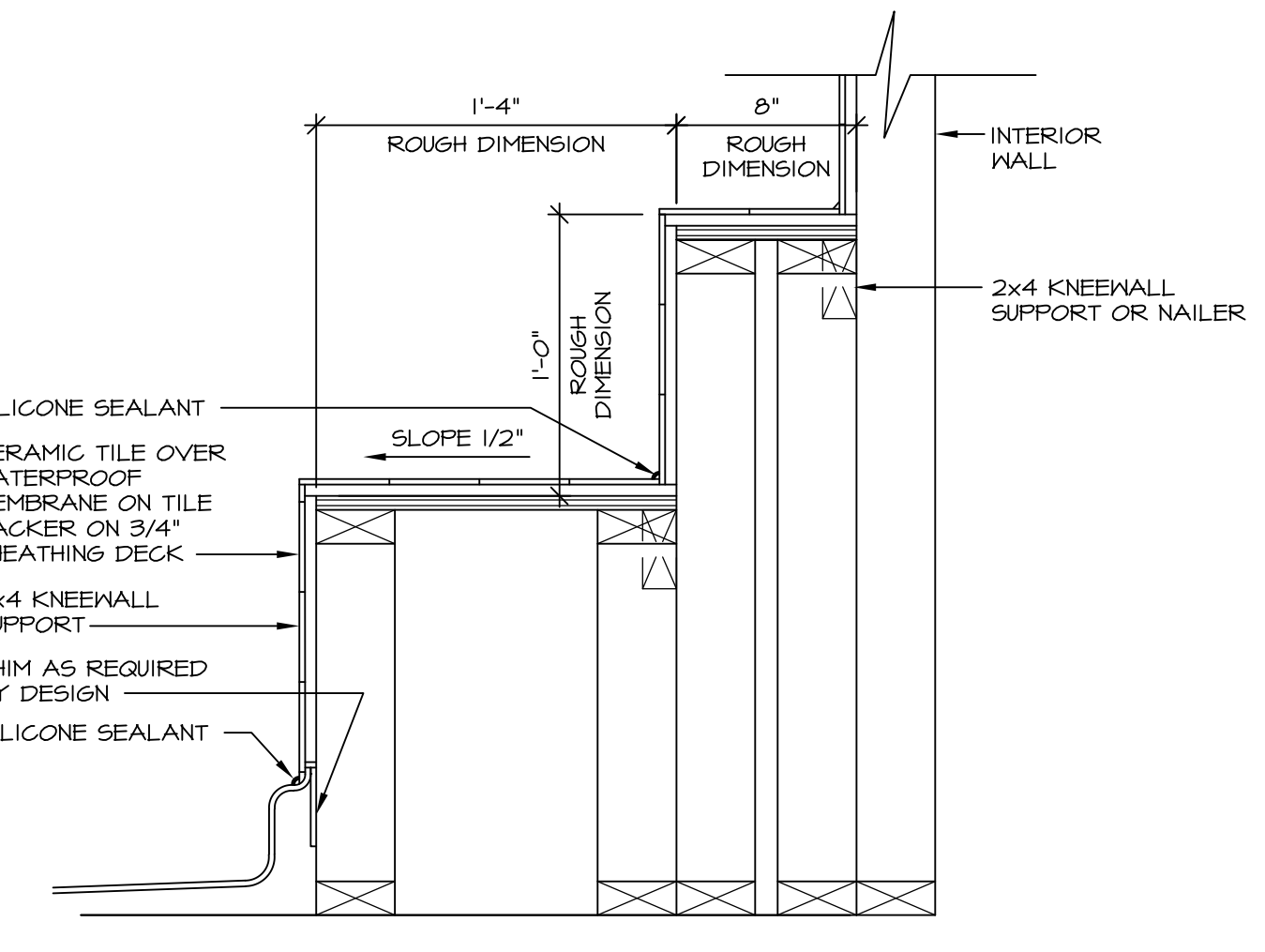
**6 SECTION OF TUB TO WALL CONDITION**  
SCALE: 1 1/2" = 1'-0"



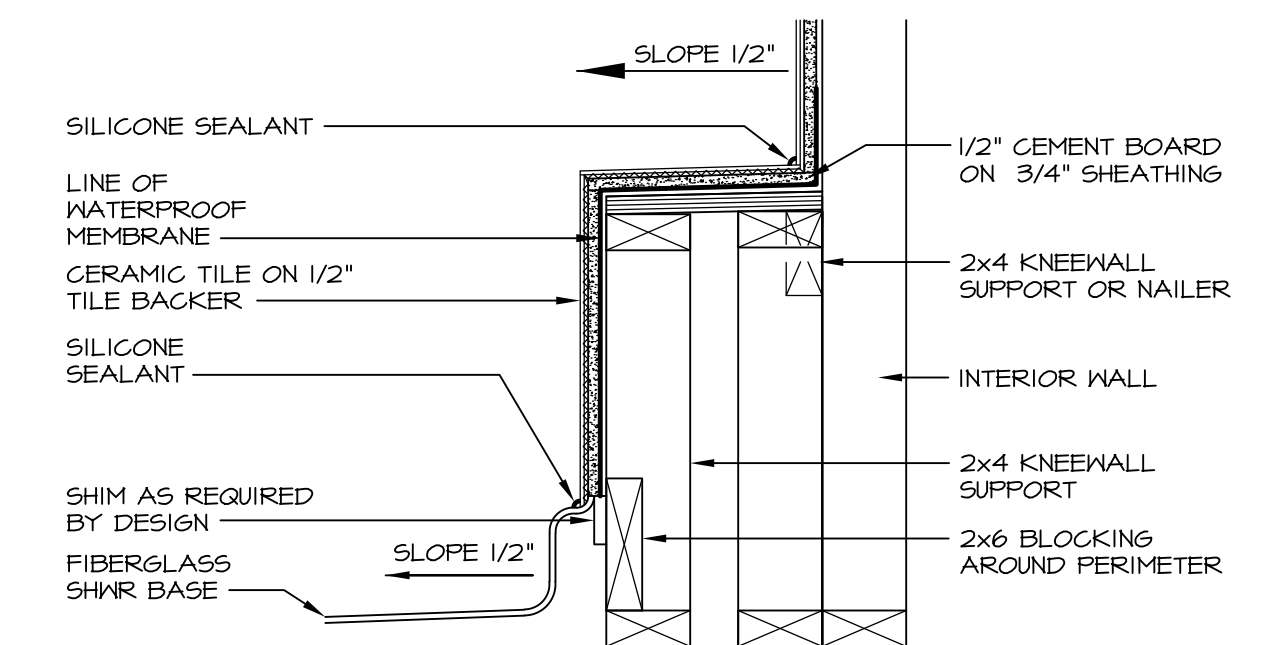
**4 ELEVATION**  
SCALE: 1/2" = 1'-0"



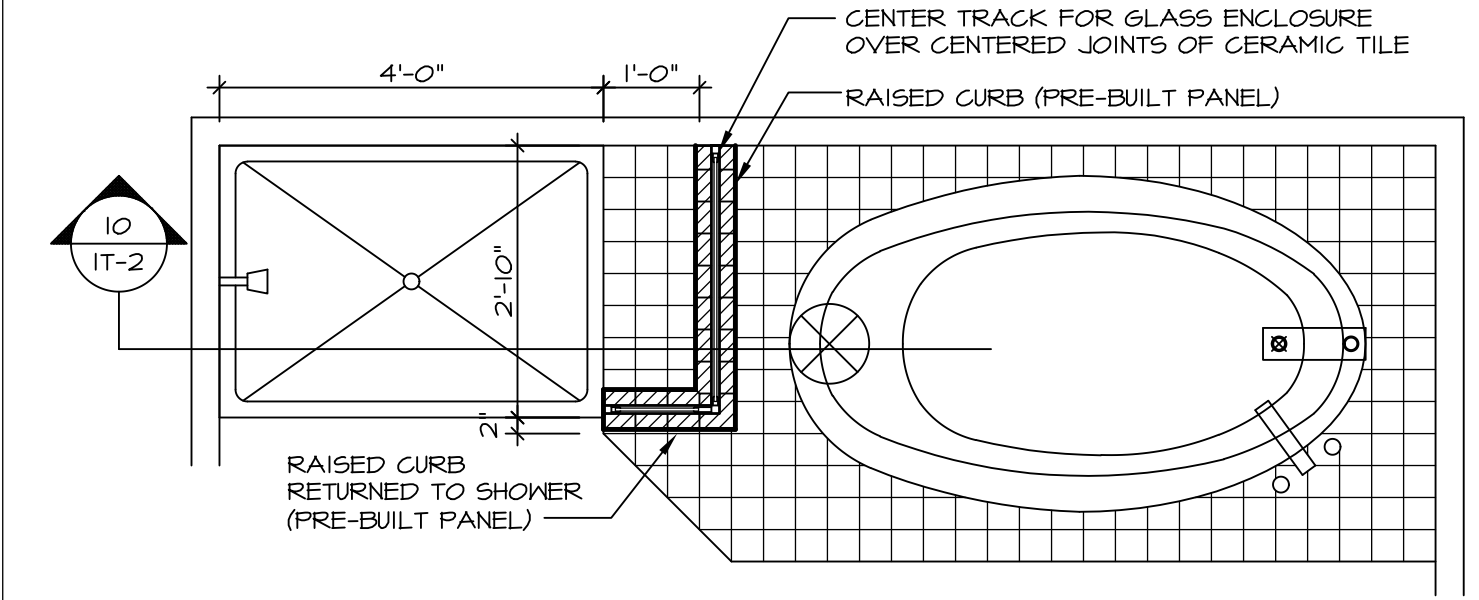
**5 INSULATION DETAIL**  
SCALE: 1" = 1'-0" AT EXTERIOR WALL



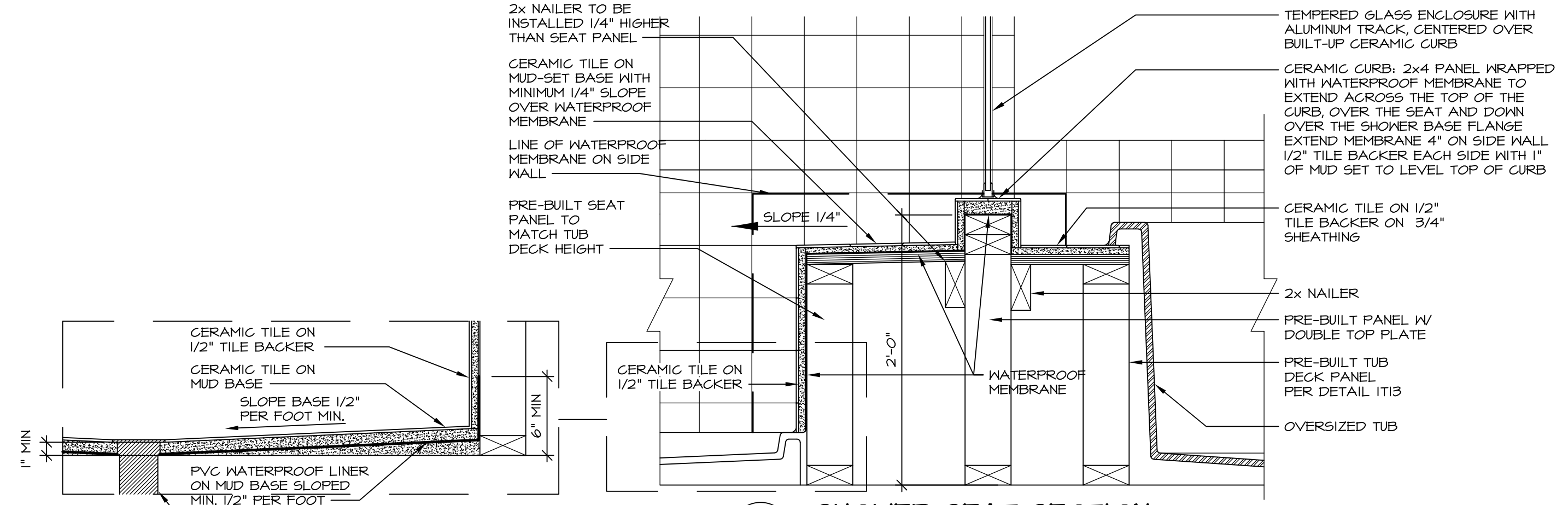
**7 SECTION OF SHOWER SEAT AND SHELF**  
SCALE: 1 1/2" = 1'-0"



**8 SECTION OF SHOWER SEAT**  
SCALE: 1-1/2" = 1'-0" FIBERGLASS SHOWER BASE



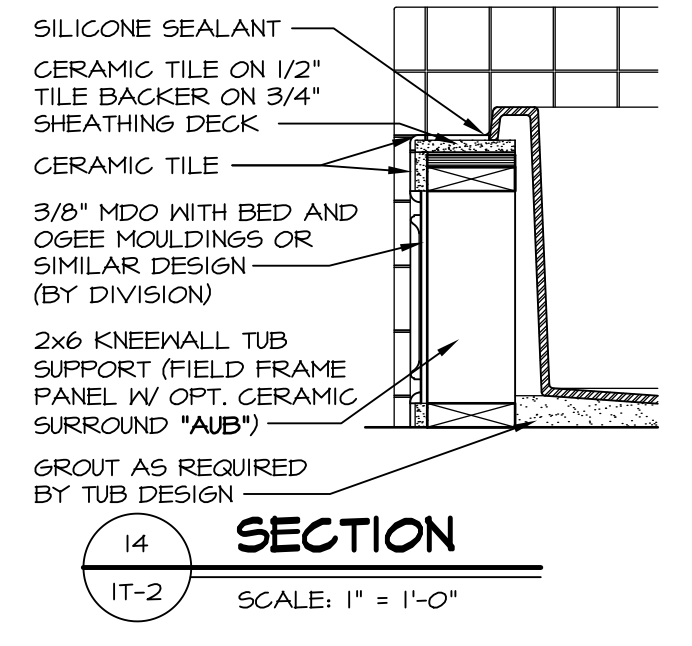
**9 SHOWER SEAT PLAN / DETAIL**  
SCALE: 1/2" = 1'-0"



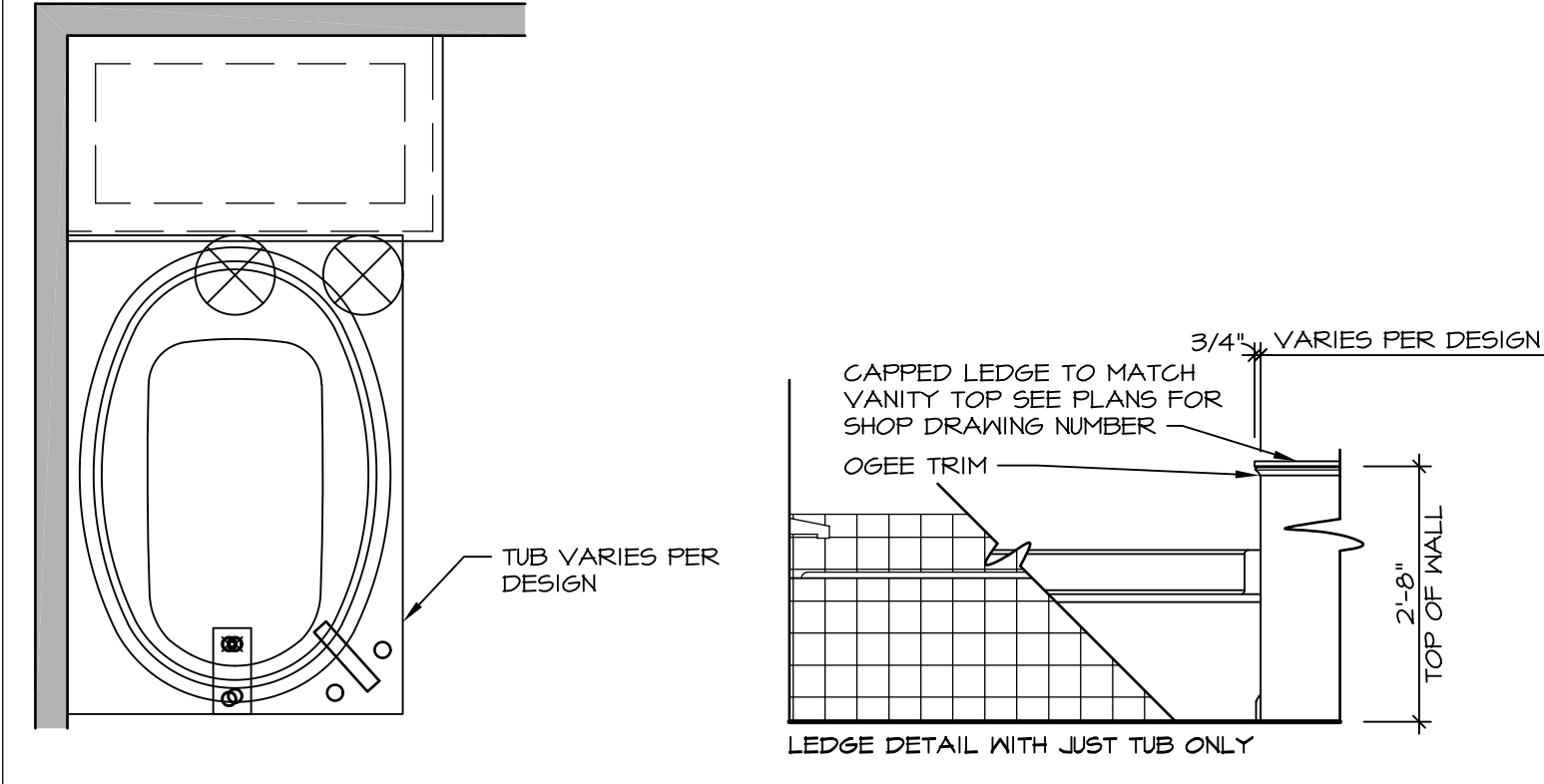
**10 SHOWER SEAT SECTION**  
SCALE: 1-1/2" = 1'-0"



**11 ALTERNATE SHOWER PAN DETAIL**



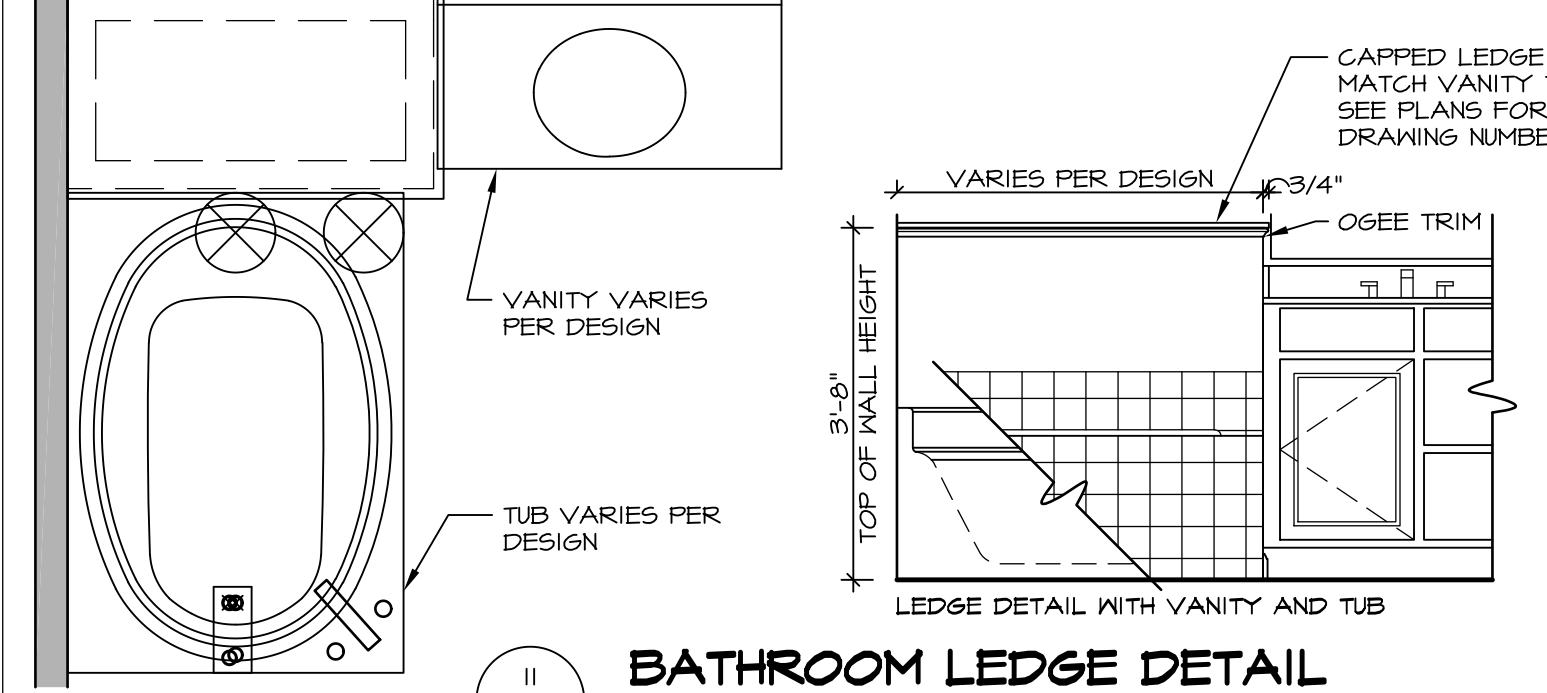
**14 SECTION**  
SCALE: 1" = 1'-0"



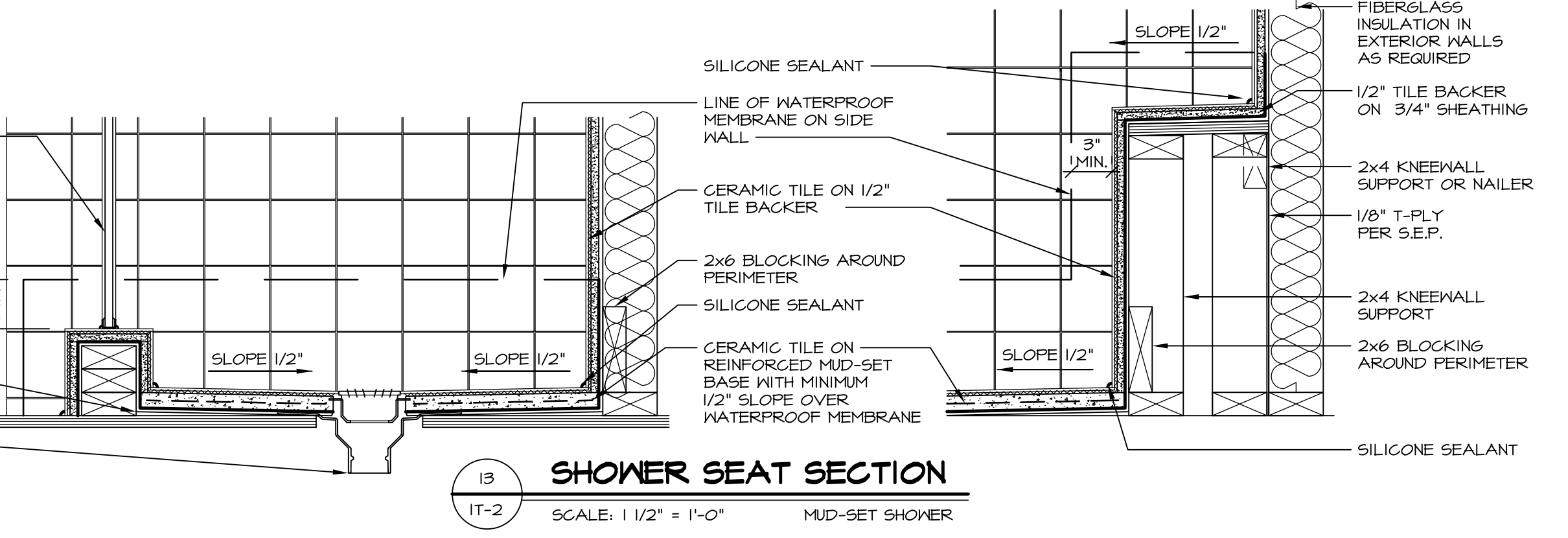
**12 BATHROOM LEDGE DETAIL**  
SCALE: 1/2" = 1'-0"



**13 SILL DETAIL**  
SCALE: 1" = 1'-0"



**11 BATHROOM LEDGE DETAIL**  
SCALE: 1/2" = 1'-0"



**13 SHOWER SEAT SECTION**  
SCALE: 1 1/2" = 1'-0" MUD-SET SHOWER

REV. NO. DATE  
5/11/17  
5/11/17

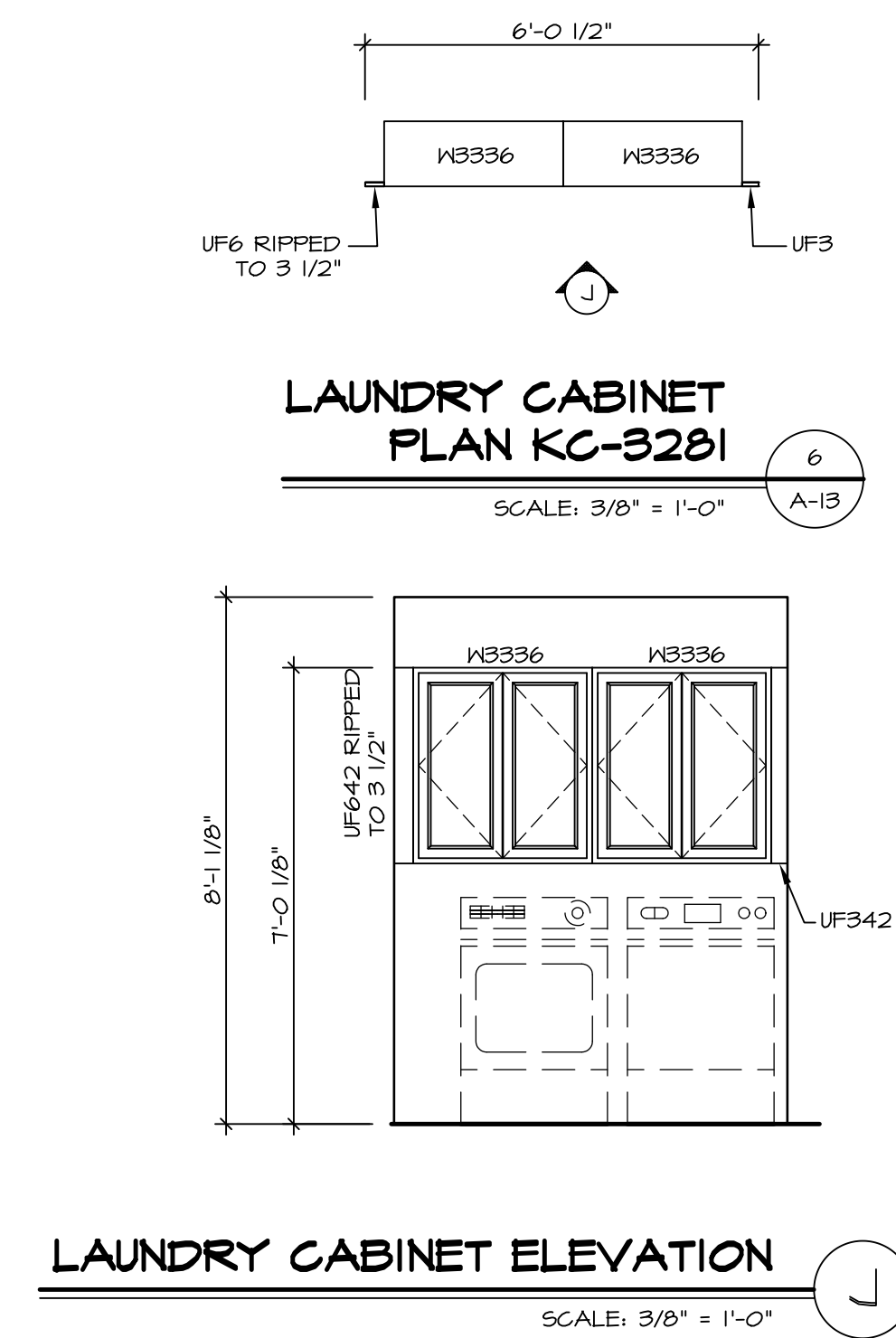
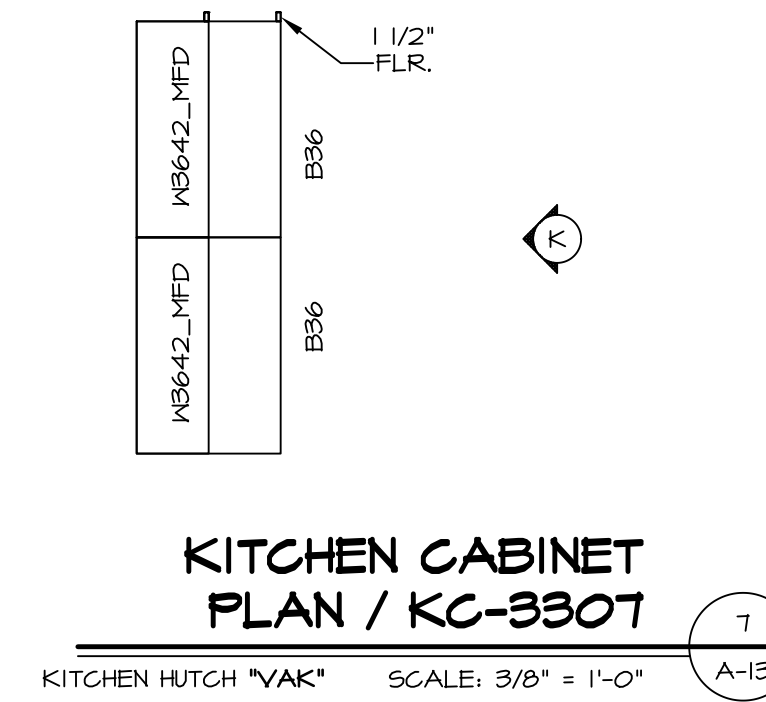
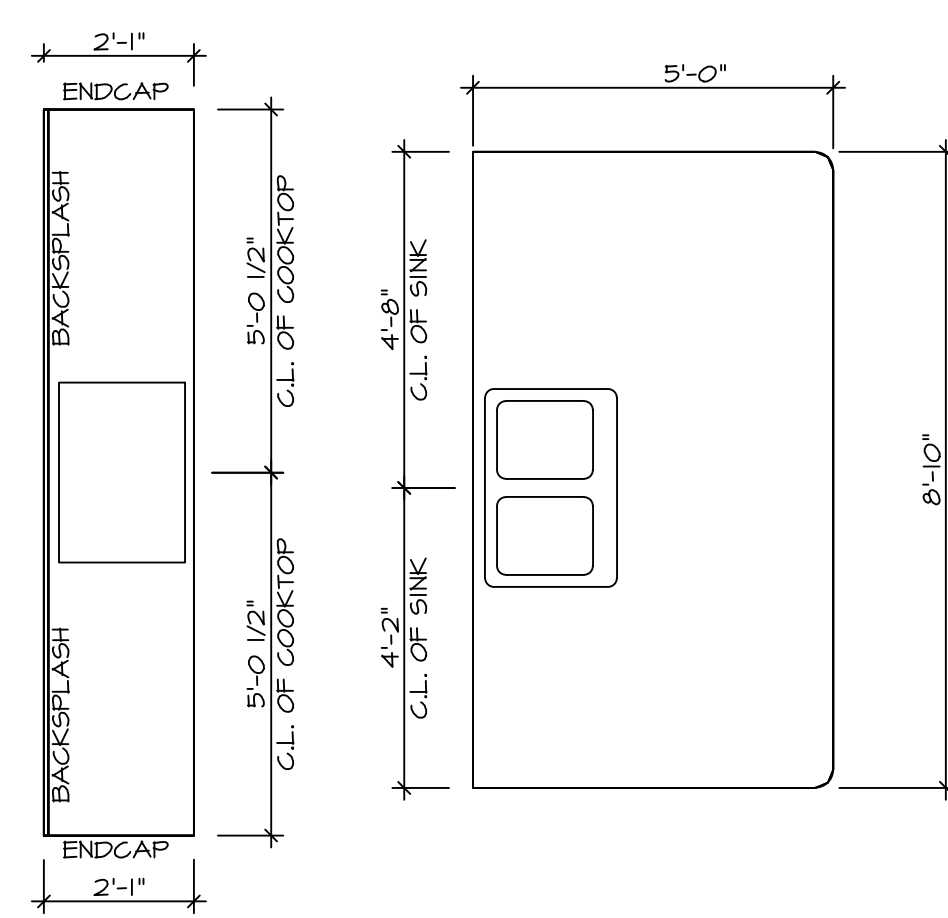
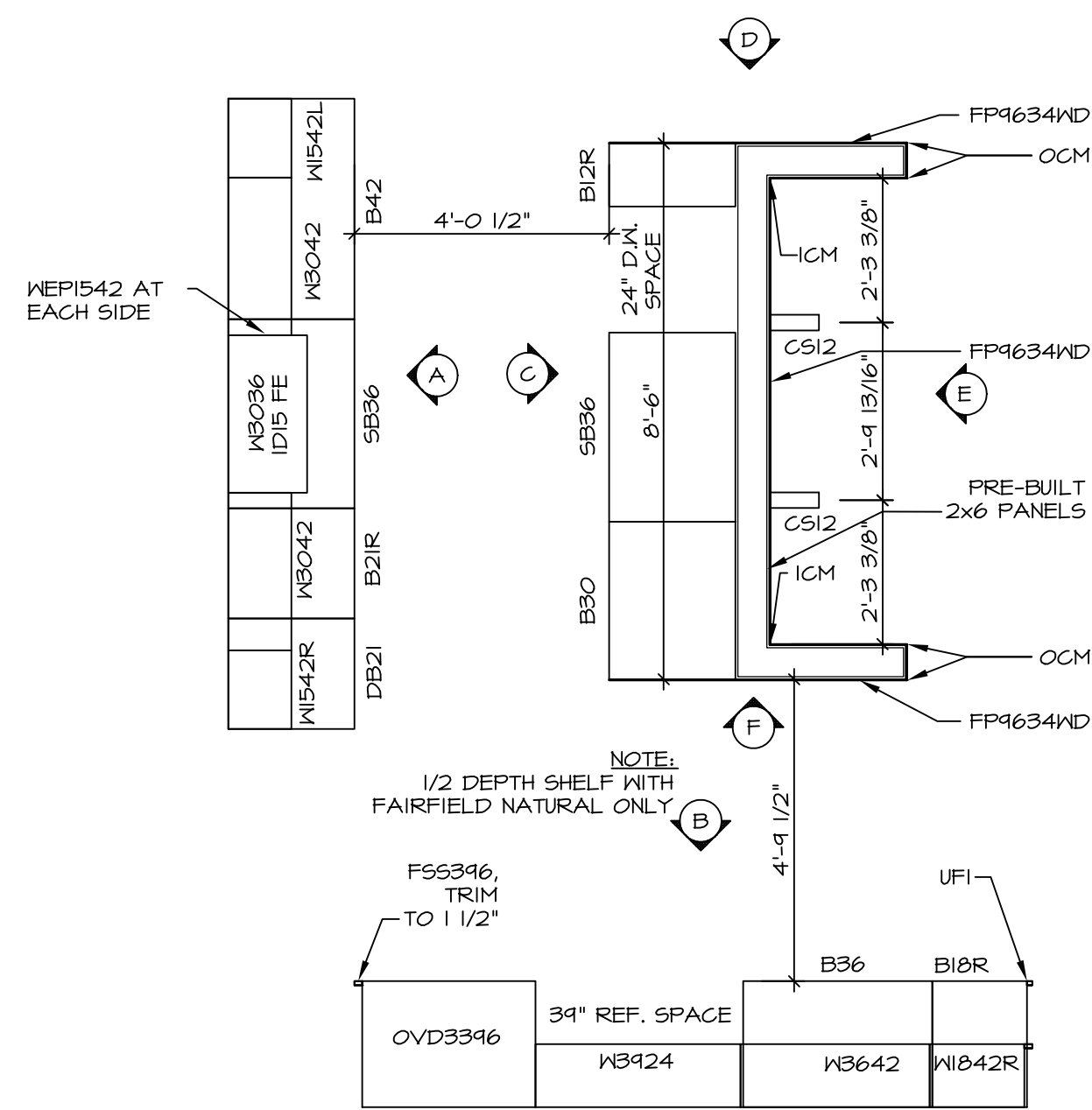
REMARKS  
EFP - REVISED DETAIL 1 AND 11 TO REMOVE TUB ACCESS PANEL REF. (CBS #15 8414)

**NVR**  
NVR, Inc.  
Architectural Services  
5285 Washburn Circle  
Frederick, MD 21703

SET NO. NVR  
VERSION  
DRAWN BY  
DATE:  
OPTION

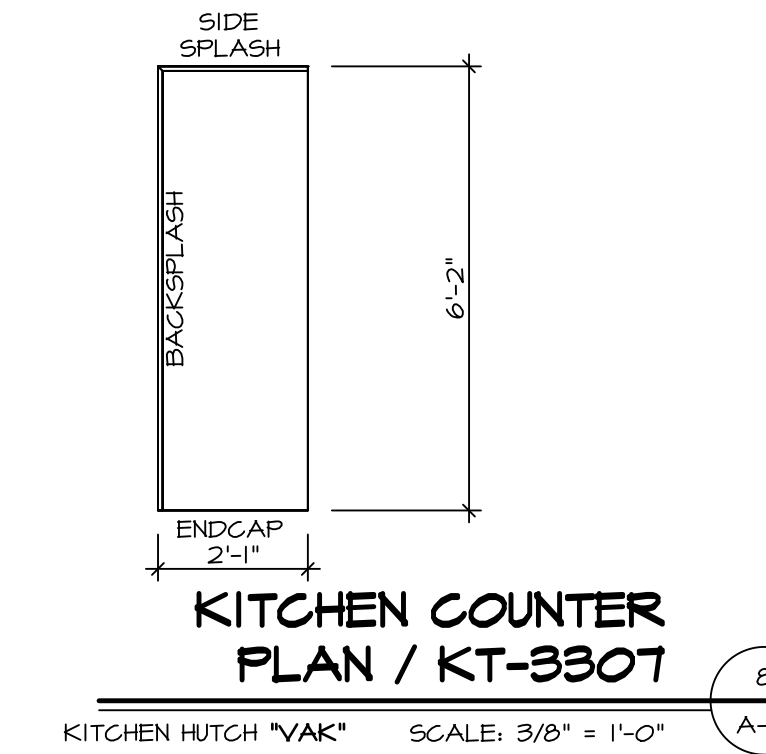
MODEL  
**STANDARD DETAILS**  
DRAWING TITLE  
INTERIOR TRIM DETAILS  
BATH DETAILS  
OPTION DESCRIPTION

SHEET NO.  
**IT-2**

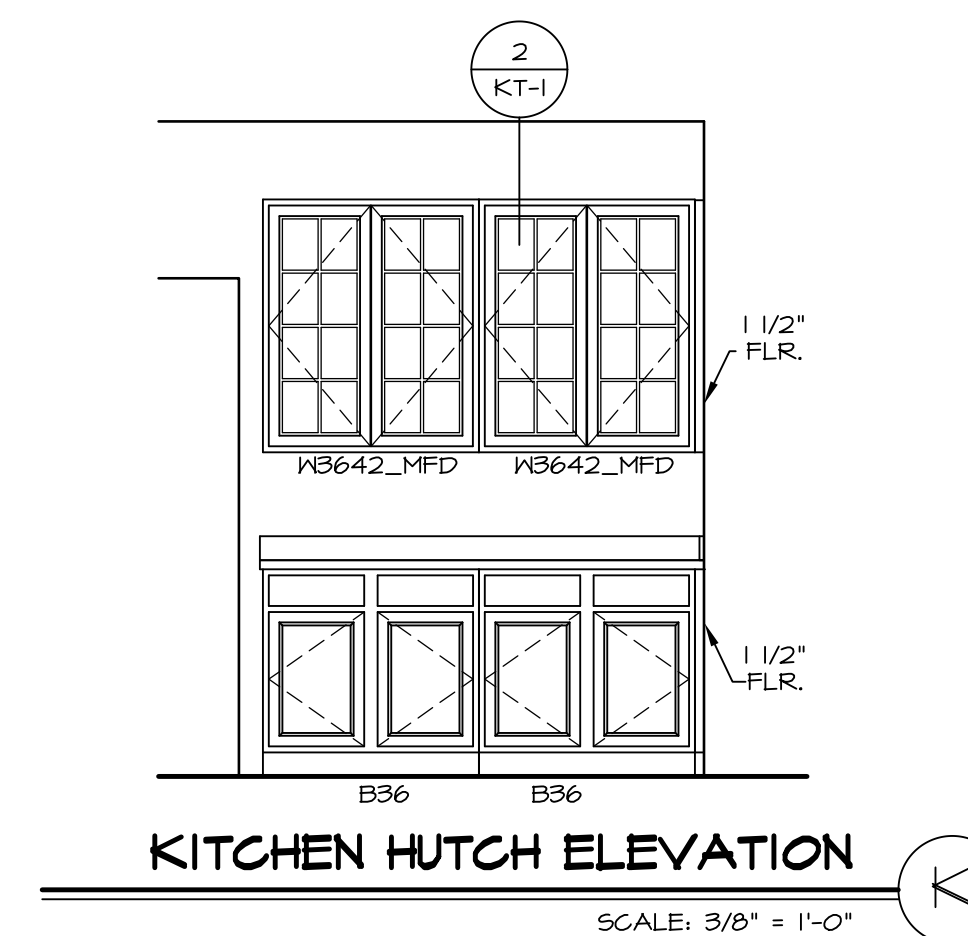


**KITCHEN CABINET PLAN / KC-3231**  
SCALE: 3/8" = 1'-0" A-13

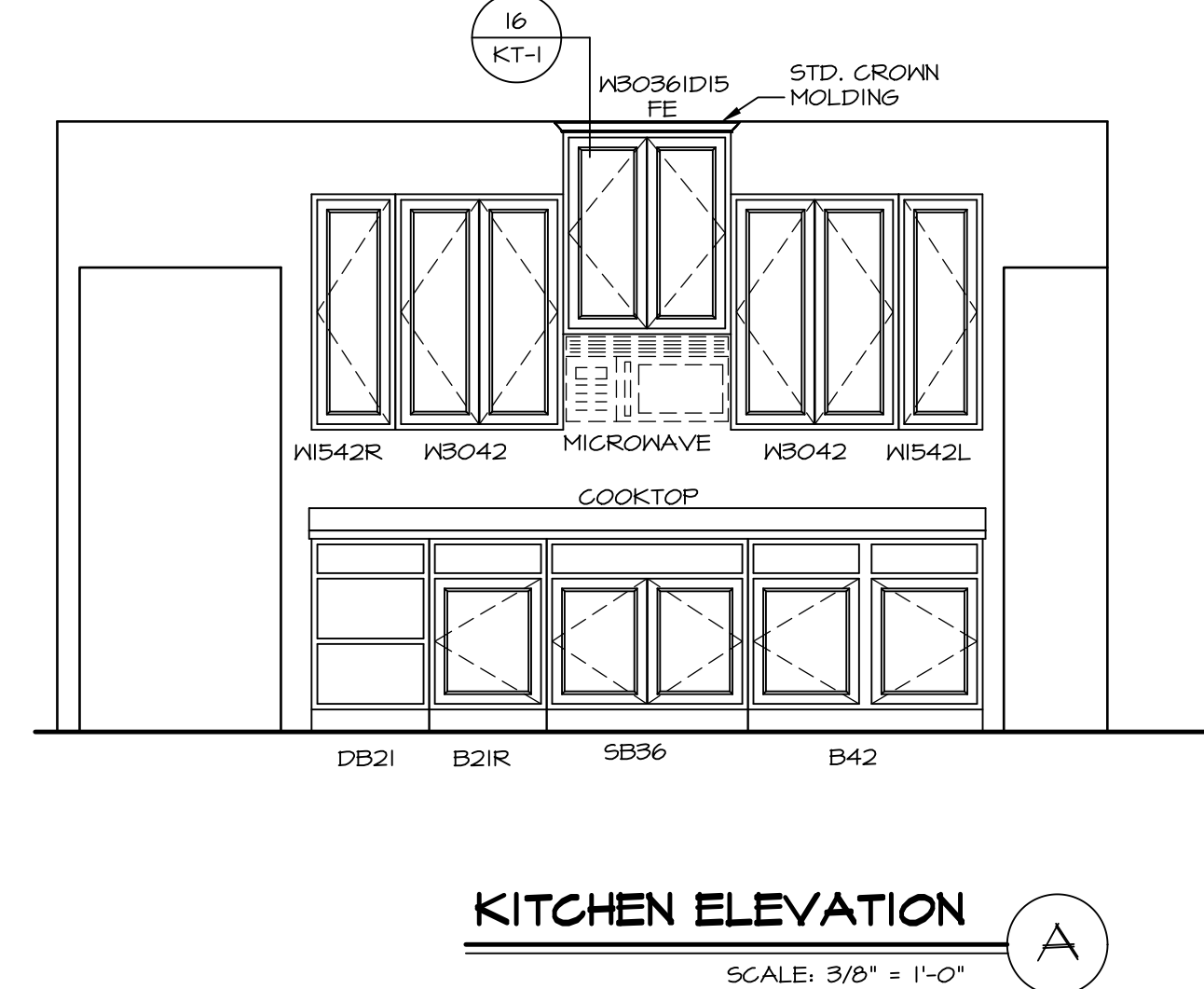
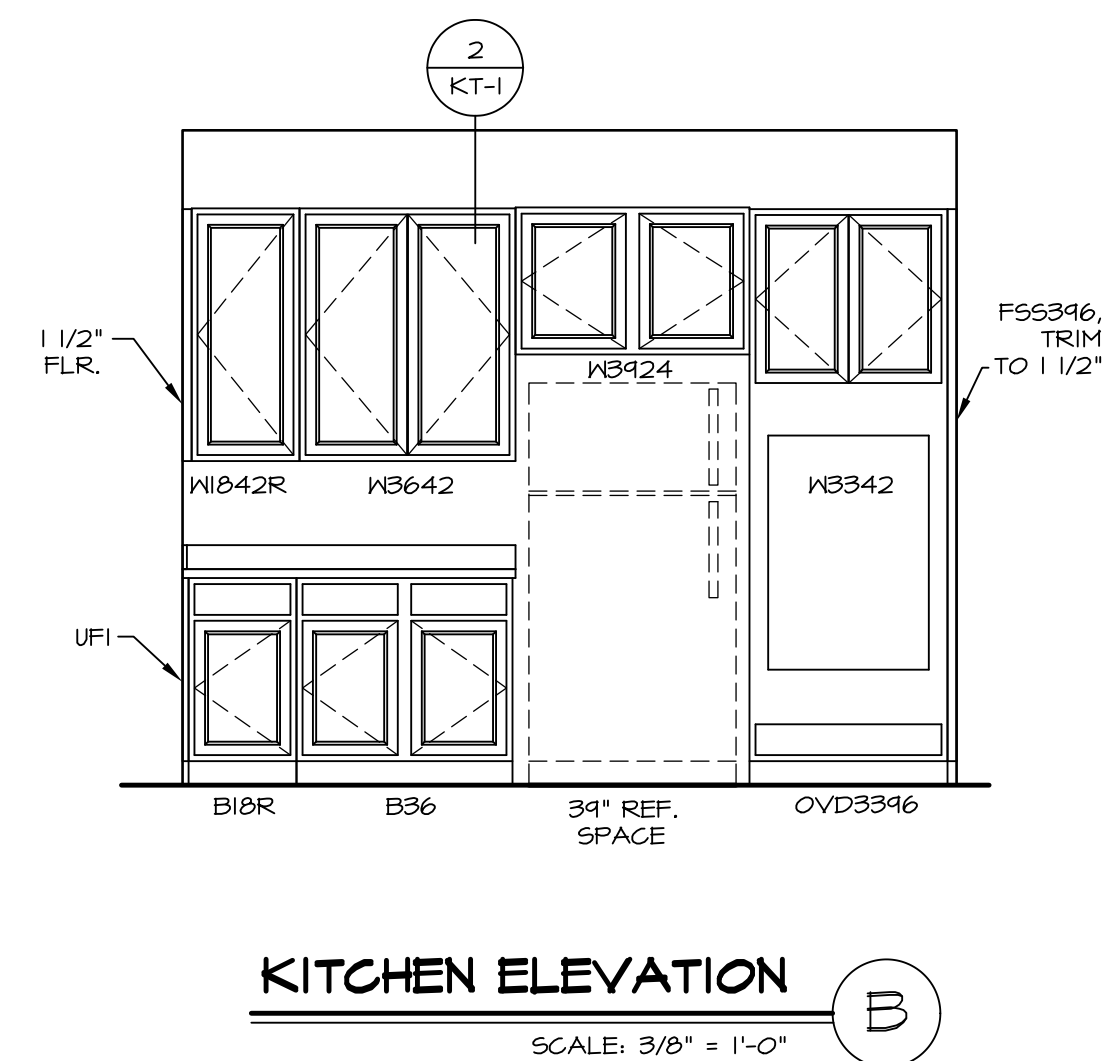
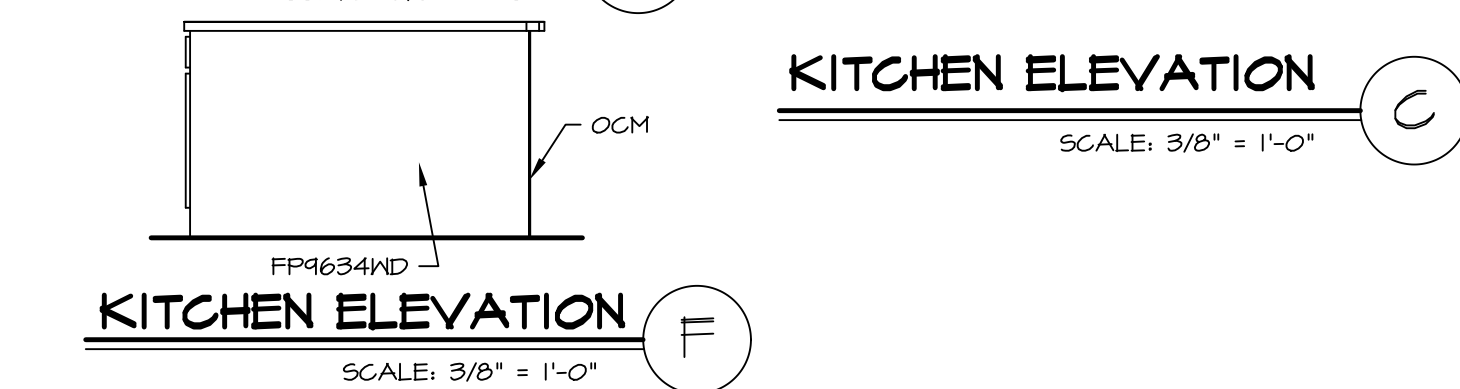
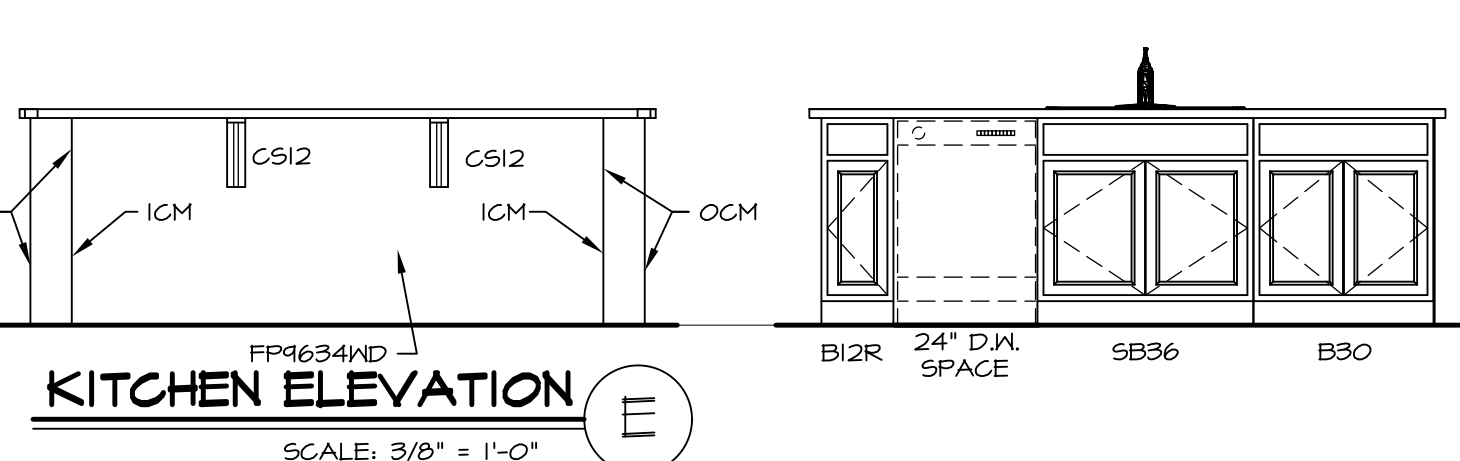
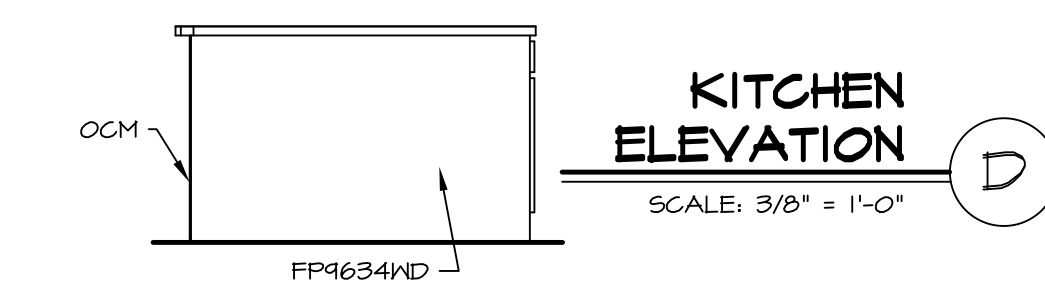
**KITCHEN COUNTERTOP PLAN / KT-3301**  
SCALE: 3/8" = 1'-0" A-13



**KITCHEN COUNTER PLAN / KT-3301**  
SCALE: 3/8" = 1'-0" A-13

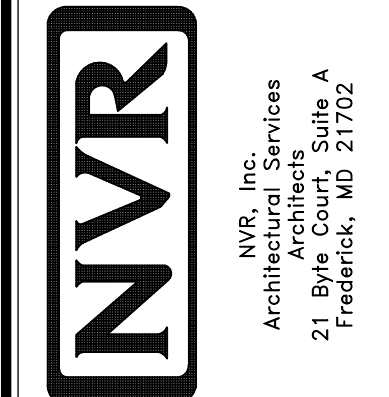


**KITCHEN HUTCH ELEVATION**  
SCALE: 3/8" = 1'-0" A-13

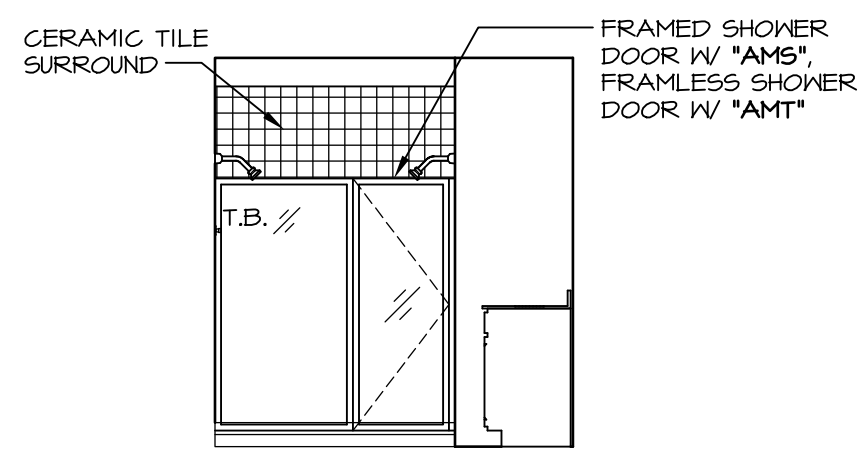


REV. NO.	DATE	REMARKS
1	11/05/16	TRV - STANDARD DETAILS 5.0

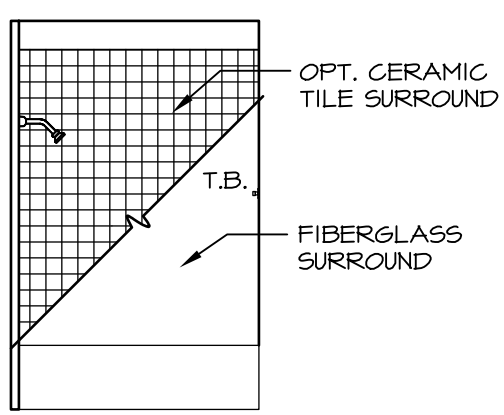
NVR, Inc., owner, expressly reserves its copyright in these plans. These plans are not to be reproduced, changed, copied in any way, or used for any other purpose without the written consent of NVR, Inc.



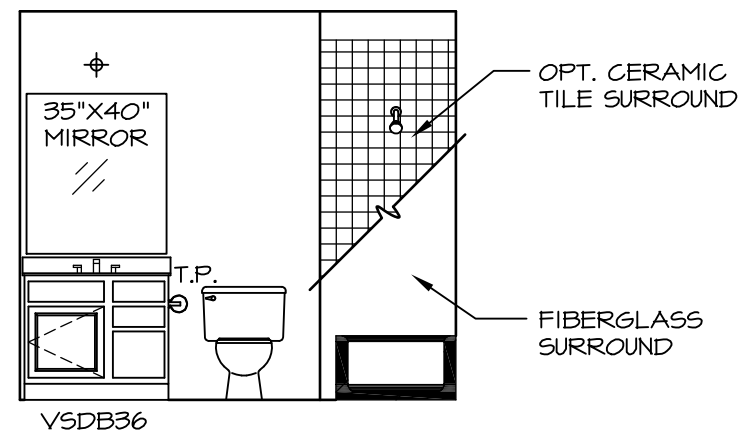
SHEET NO.	MODEL	SET NO.	VERSION	DRAWN BY	DATE	OPTION
A-13	NORMANDY	01	01	RJC	6/29/15	
46	DRAWING TITLE	KITCHEN LAYOUT				
	OPTION DESCRIPTION					



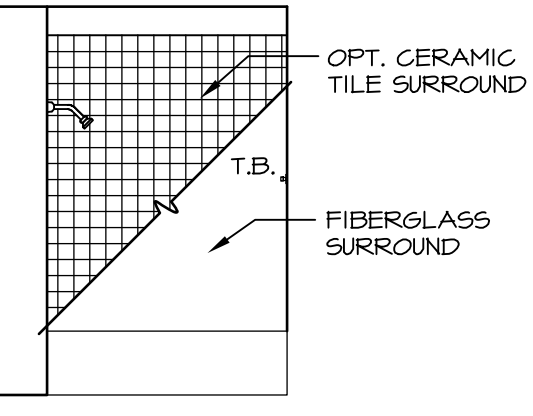
**M** OWNER'S BATH - "AMG"  
SCALE: 1/4" = 1'-0"



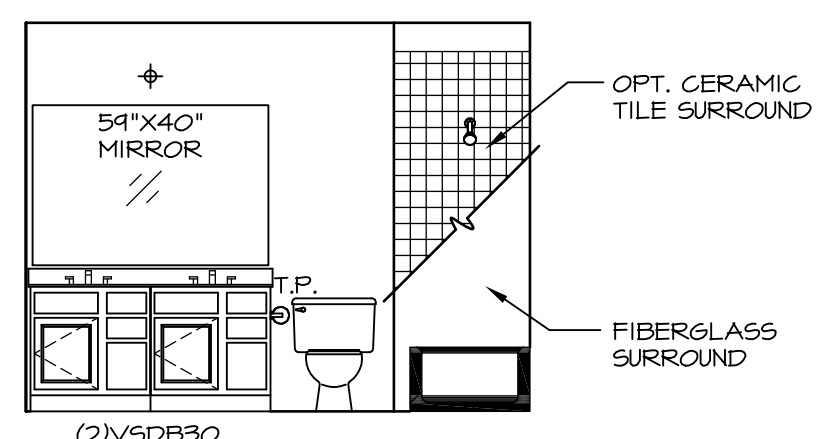
**J** BATH #2  
SCALE: 1/4" = 1'-0"



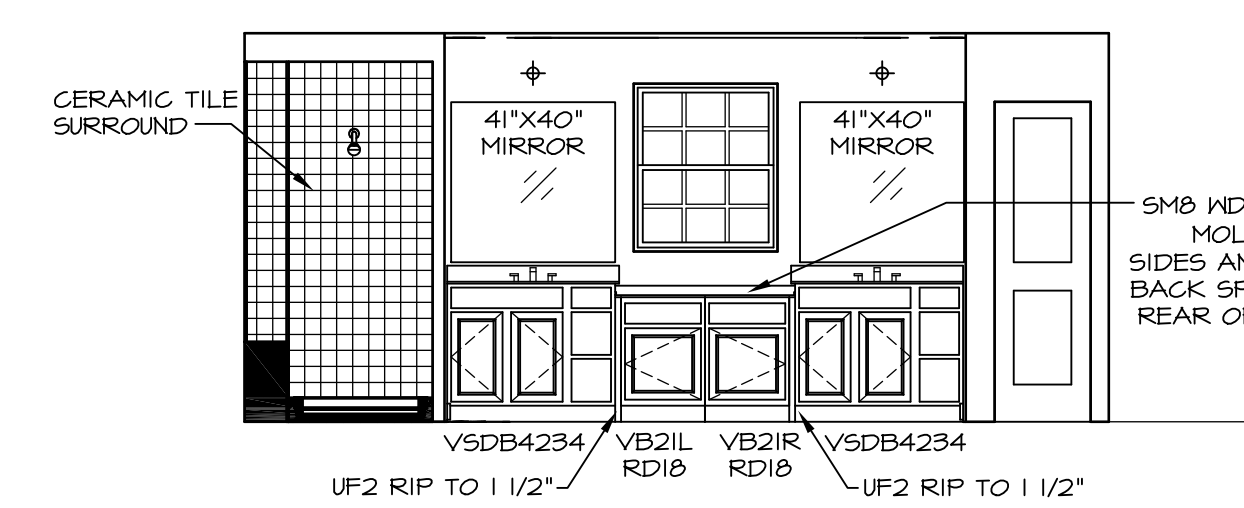
**H** BATH #2  
SCALE: 1/4" = 1'-0"



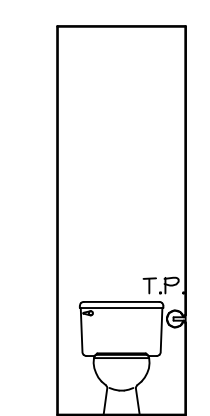
**G** BATH #1  
SCALE: 1/4" = 1'-0"



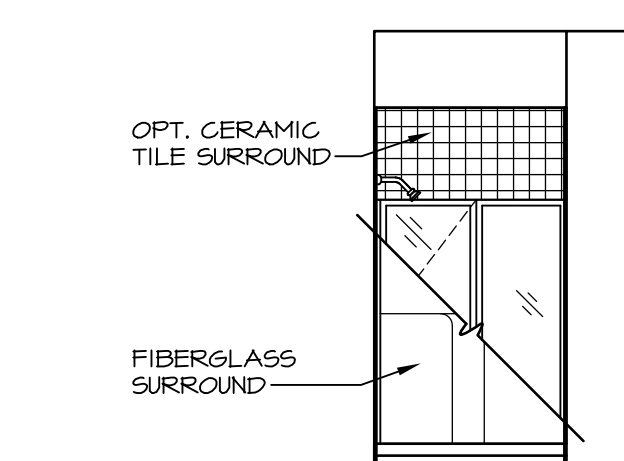
**F** BATH #1  
SCALE: 1/4" = 1'-0"



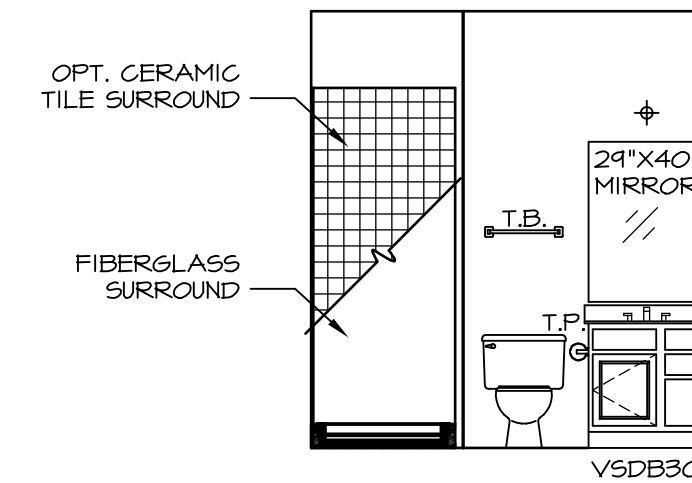
**L** OWNER'S BATH - "AMG"  
SCALE: 1/4" = 1'-0"



**K** OWNER'S BATH - "AMA" OR "AMG"  
SCALE: 1/4" = 1'-0"



**E** FIRST FLOOR BATH - "BAR"  
SCALE: 1/4" = 1'-0"



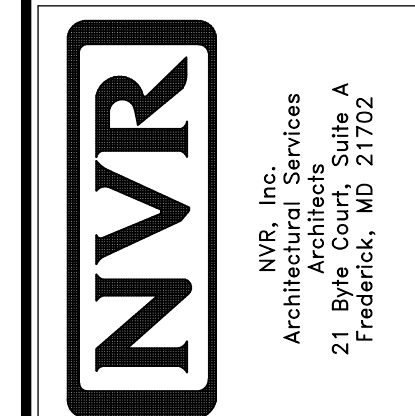
**D** FIRST FLOOR BATH - "BAR"  
SCALE: 1/4" = 1'-0"

**NOTES:**

1. TEMPERED GLASS SHOWER ENCLOSURE WITH SWING DOOR OR OPTIONAL SLIDING DOOR BY DIVISION
2. TUB ACCESS PANELS PROVIDED AS NEEDED, ALL MATERIALS BY DIVISION
3. REFER TO SHEET (IT-2) FOR TUB AND SHOWER DETAILS.
4. ALL VSDB24-42 DRAWERS TO BE SET ON RIGHT HAND.
5. BATH ELEVATIONS ARE SHOWN PER PLAN.

REV. NO.	DATE	REMARKS
1	08/07/16	N - DRAWING ALIGNMENT
2	11/15/16	TRV - STANDARD DETAILS 5.0

NVR, Inc., owner, expressly reserves its copyright in these plans. These plans are not to be reproduced, changed, copied in any way, or used for any purpose not intended by NVR, Inc. without the written consent of NVR, Inc.



MODEL	NORMANDY
DRAWING TITLE	BATH ELEVATIONS
OPTION DESCRIPTION	
SHEET NO.	A-14
SET NO.	NRM00
VERSION	01
DRAWN BY	SGA
DATE	5/29/15
OPTION	