

1
A-4
PLUMBING LAYOUT
SCALE: 1/4" = 1'-0"

2
A-4
PARTIAL PLUMBING LAYOUT
SCALE: 1/4" = 1'-0"

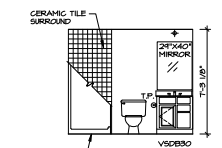
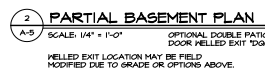
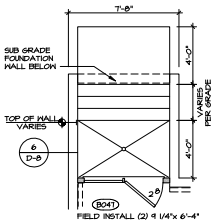
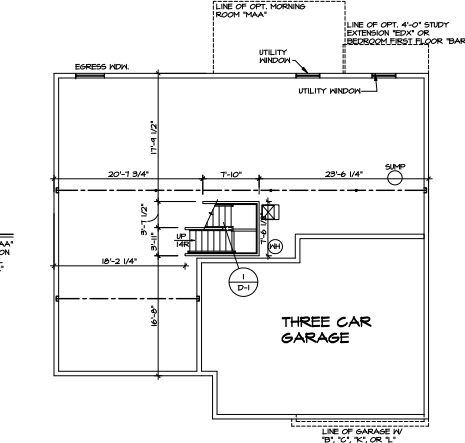
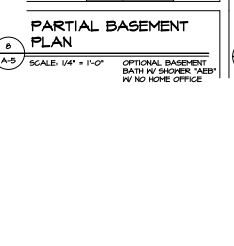
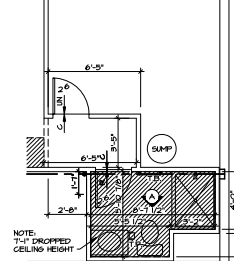
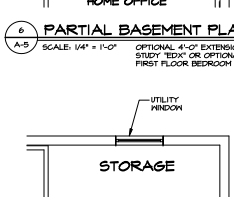
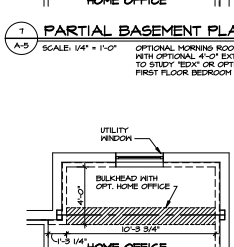
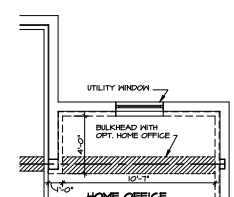
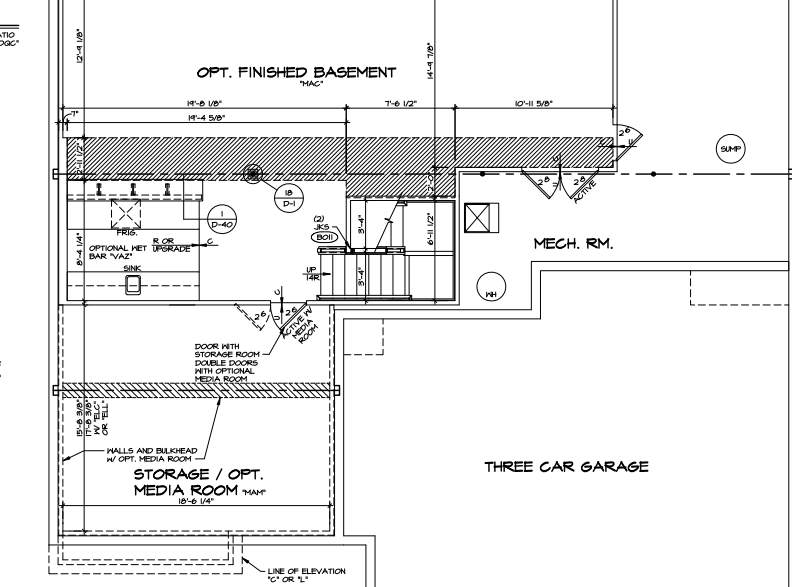
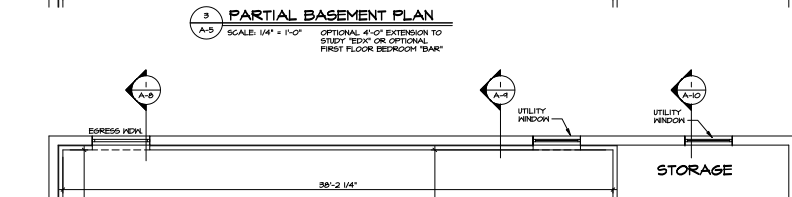
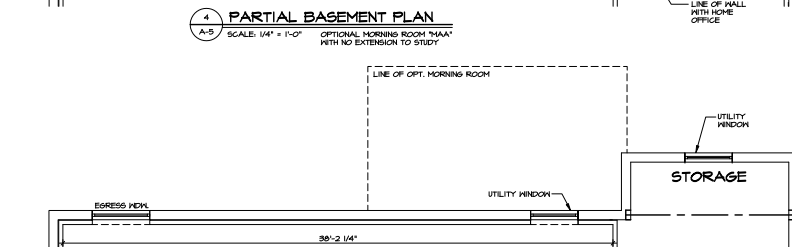
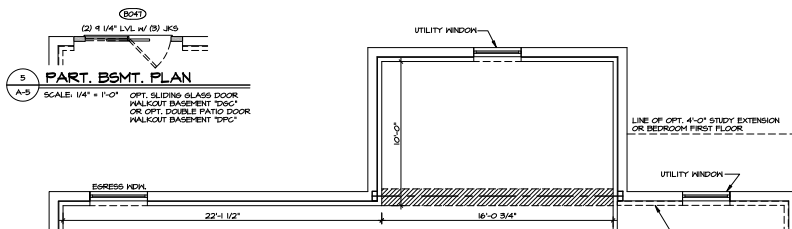
SHEET NO. A-4	MODEL OLSEN DRAWING TITLE PLUMBING LAYOUT	OPTION DESCRIPTION FULL BASEMENT FOUNDATION	DATE 10/15/13	DRAWN BY BDH	REV. NO.	DATE	REVISIONS
							1
28					2	1/28/14	DRG. - CREATED VERSION 0.2



SET NO. **04500**
VERSION **02**
DRAWN BY **BDH**
DATE: **10/15/13**
OPTION: **FBA**

PROVIDE 2" DRAIN FROM FURFAGE TO SUMP FOR FURFAGE CONDENSATE LINE AS REQUIRED. HOLD TIGHT TO FOOTING (SEE NOTE SHEET 05-1) NOTE #6 UNDER MECHANICAL FOR CONDENSATE DISPOSAL

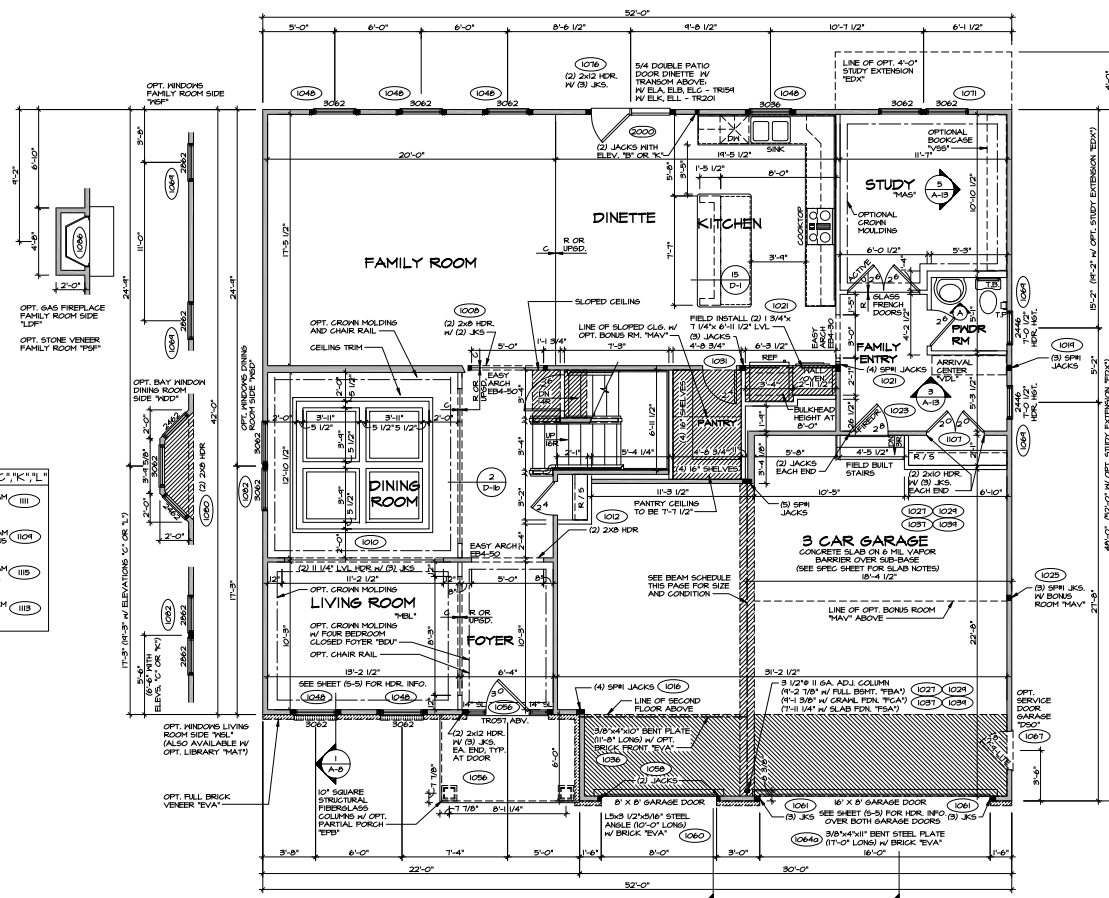
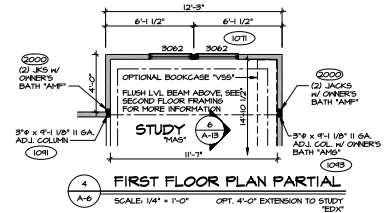
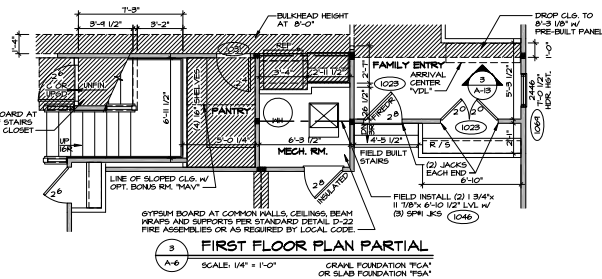
THIS PLAN, SPECIFICATIONS AND NOTES ARE THE PROPERTY OF NVR, INC. AND ARE TO BE USED ONLY FOR THE PROJECT AND SITE SPECIFICALLY IDENTIFIED HEREON. ANY REUSE, REPRODUCTION, OR TRANSMISSION OF THIS PLAN, SPECIFICATIONS AND NOTES WITHOUT THE WRITTEN CONSENT OF NVR, INC. IS STRICTLY PROHIBITED.



NOTES:
 1. THERMO GLASS SHOWER ENCLOSURE WITH SLIDING DOOR OR OPT. SLIDING DOOR BY DIVISION.
 2. REFER TO SHEET (D-10) FOR SHOWER DETAILS.
 3. ALL VSCB24-42 DRAWERS TO BE SET ON RIGHT HAND.

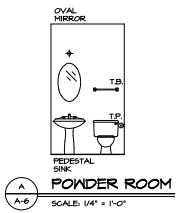
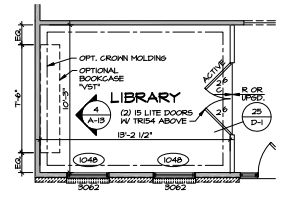
STRUCTURAL LEGEND
 (X) ENGINEERING PAGE NUMBER
 (B) INDICATES BEARING FROM POINT-LOAD ABOVE
 (+) REINFORCEMENT ADDED AT POINT-LOADS FROM ABOVE OR PER ENGINEERING QUANTITY/SENS VARIES PER DESIGN.

SHEET NO. A-5	MODEL OLSEN	DATE 10/14/2019	REVISIONS
	DRAWING TITLE BASEMENT PLAN	DESIGNED BY DAS	1. 2/20/14 DRG. - PROPOSED REVISIONS
	OWNER FULL BASEMENT FOUNDATION	CHECKED BY FBA	2. 3/14/14 DRG. - THE GARAGE
	DATE 10/14/2019	DATE 10/14/2019	3. 12/20/14 DRG. - CREATED A REVISION
SCALE 1/4" = 1'-0"	SCALE 1/4" = 1'-0"	SCALE 1/8" = 1'-0"	SCALE 1/4" = 1'-0"
26			



BEAM SCHEDULE

W/ ELEVATION "A"	W/ ELEVATIONS "B","C","K","L"
W12K 14K 21-3 1/2" STEEL BEAM BELTOUT BRICK AND DETAIL BONUS ROOM (1021)	W12K 22K 22-11 1/2" STEEL BEAM BELTOUT BRICK AND DETAIL BONUS ROOM (11)
W12K 26K 21-11 1/2" STEEL BEAM BELTOUT BRICK AND DETAIL BONUS ROOM (1021)	W12K 30K 22-11 1/2" STEEL BEAM BELTOUT BRICK AND DETAIL BONUS ROOM (104)
W12K 22K 21-11 1/2" STEEL BEAM BELTOUT BRICK AND DETAIL BONUS ROOM (1028)	W12K 26K 22-11 1/2" STEEL BEAM BELTOUT BRICK AND DETAIL BONUS ROOM (118)
W12K 30K 21-11 1/2" STEEL BEAM BELTOUT BRICK AND DETAIL BONUS ROOM (1021)	W12K 35K 22-11 1/2" STEEL BEAM BELTOUT BRICK AND DETAIL BONUS ROOM (118)

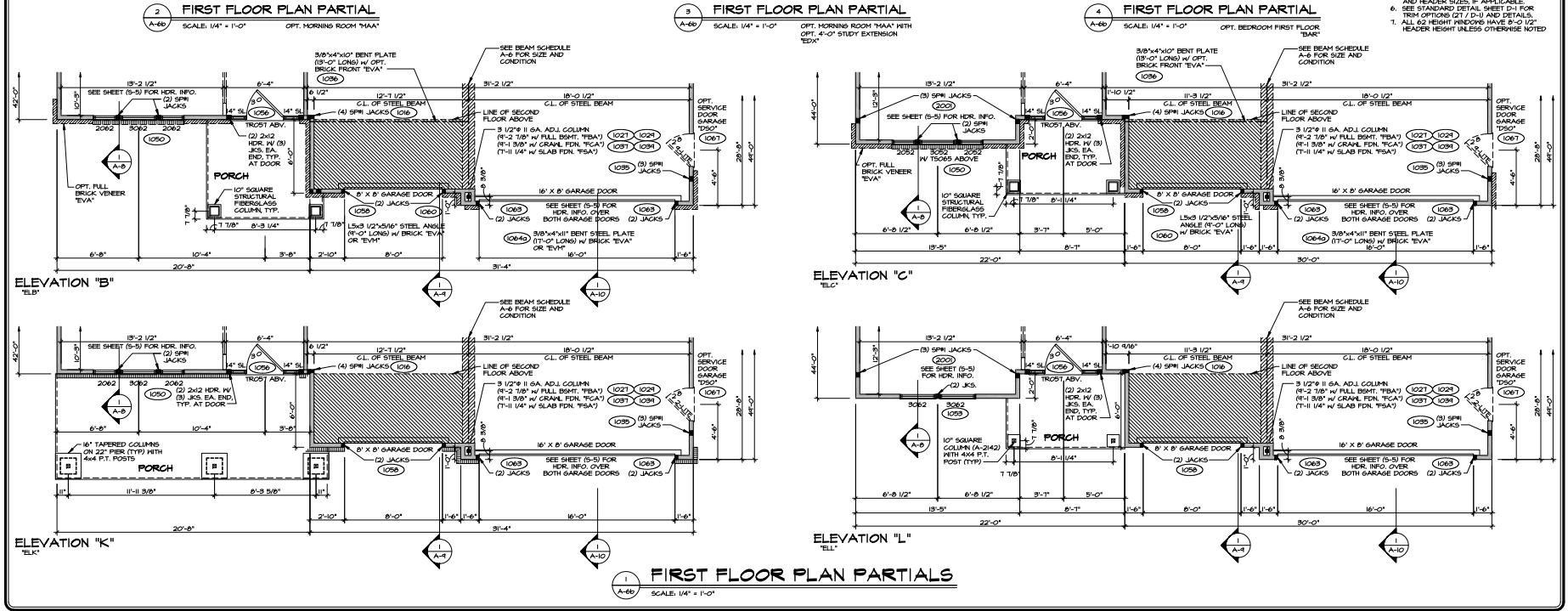
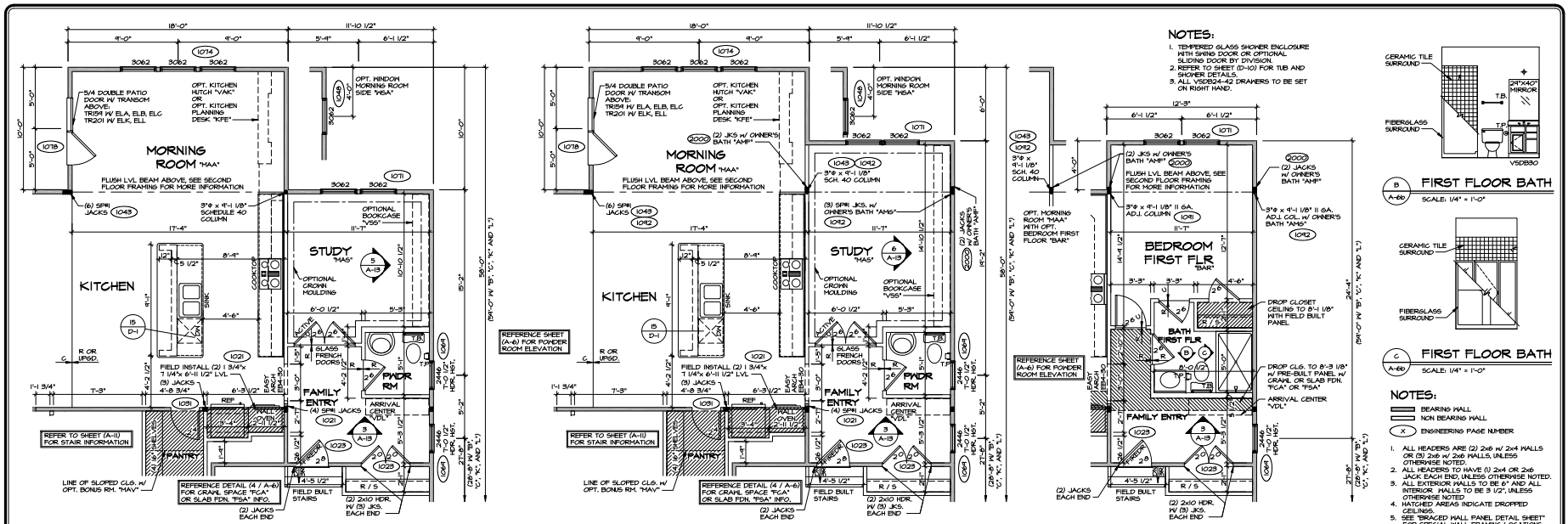


- NOTES:**
- BEARING WALL
 - NON BEARING WALL
 - ENGINEERING PAGE NUMBER
1. ALL HEADERS ARE (2) 2x6 W/ 2x4 HALLS OR (3) 2x6 W/ 2x6 WALLS, UNLESS OTHERWISE NOTED.
 2. ALL HEADERS TO HAVE (1) 2x4 OR 2x6 JACK EACH END, UNLESS OTHERWISE NOTED.
 3. ALL EXTERIOR WALLS TO BE 4" AND ALL INTERIOR WALLS TO BE 8" UNLESS OTHERWISE NOTED.
 4. HATCHED AREAS INDICATE DROPPED CEILING.
 5. SEE "BRICKED HALL PANEL DETAIL SHEET" FOR SPECIAL HALL FRAMING LOCATIONS AND HEADER SIZES, IF APPLICABLE.
 6. SEE STANDARD DETAIL SHEET D-1 FOR TRIM OPTIONS (1) L-10 AND DETAILS.
 7. ALL WINDOW HEADER HEIGHTS TO BE 8'-0" UNLESS OTHERWISE NOTED.

NVR	REV. NO.	DATE	REVISIONS
	1	2/20/14	DIR. - PROSPECTIVE REVISIONS
	2	2/20/14	DIR. - REVISIONS
	3	2/20/14	DIR. - REVISIONS
	4	2/20/14	DIR. - REVISIONS
	5	2/20/14	DIR. - REVISIONS
	6	2/20/14	DIR. - REVISIONS

SET NO. 01.500
 VERSION 02
 DRAWN BY: EES
 DATE: 10/10/13
 PROJECT: FIRST FLOOR PLAN
 OPTION DESCRIPTION:

MODEL: OLSEN
 SHEET NO. A-6
 27



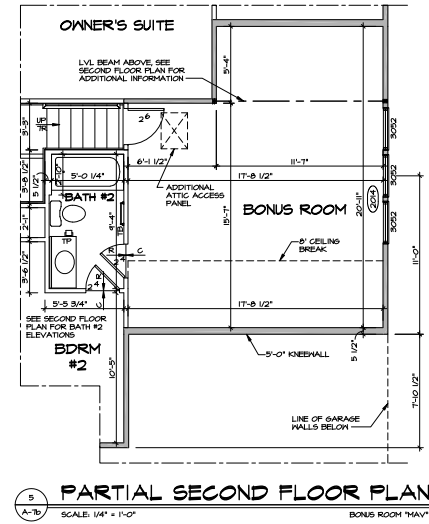
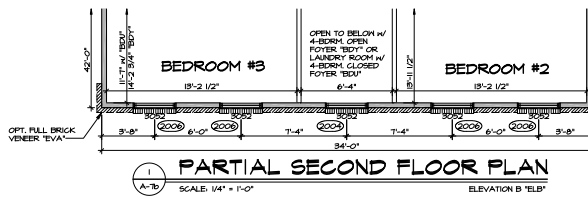
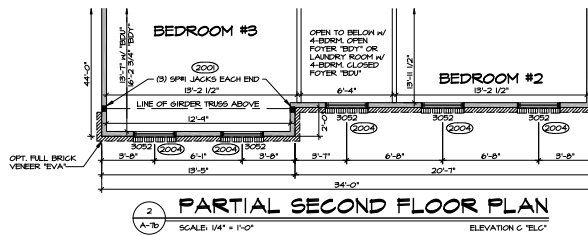
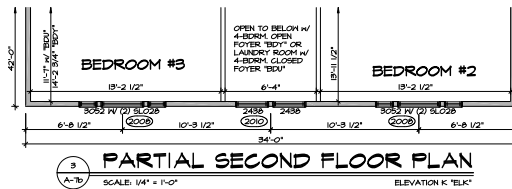
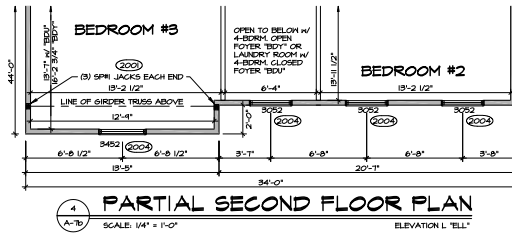
REVISION NO.	DATE	DESCRIPTION
1	10/17/2018	ISSUED FOR PERMITS
2	10/17/2018	ISSUED FOR PERMITS
3	10/17/2018	ISSUED FOR PERMITS
4	10/17/2018	ISSUED FOR PERMITS
5	10/17/2018	ISSUED FOR PERMITS
6	10/17/2018	ISSUED FOR PERMITS
7	10/17/2018	ISSUED FOR PERMITS

SET NO. 01-5000
 VESSEL-42
 DRAWN BY: BEB
 DATE: 10/17/2018
 OFFICE: 10101 13TH AVE. S. SUITE 100
 BLENHEIM, CA 94008
 TEL: 415.693.1100
 FAX: 415.693.1101
 WWW.NVR.COM

SHEET NO. **A-60**
 DRAWING TITLE: **FIRST FLOOR PLAN RUDER**
 OPTION DESCRIPTION: **ELEVATION "B", "C", "K" AND "L"**
 OPTIONAL BEDROOM: **FIRST FLOOR**
 26

NOTES:

- 1. ALL HEADERS ARE (2) 2x6 W/ 2x4 PALLS OR (2) 2x6 W/ 2x6 PALLS, UNLESS OTHERWISE NOTED.
- 2. ALL HEADERS TO HAVE (1) 2x4 OR 2x6 JACK EACH END, UNLESS OTHERWISE NOTED.
- 3. ALL EXTERIOR WALLS TO BE 4" AND ALL INTERIOR WALLS TO BE 3 1/2", UNLESS OTHERWISE NOTED.
- 4. HATCHED AREAS INDICATE DROPPED CEILING.
- 5. SEE "BRACED HALL PANEL DETAIL SHEET" FOR SPECIAL HALL FRAMING LOCATIONS AND HEADER SIZES, IF APPLICABLE.
- 6. SEE STANDARD DETAIL SHEET D-1 FOR TRIM OPTIONS (D7 / D-1) AND DETAILS.



REVISIONS	
NO.	DESCRIPTION
1	2/20/14 DISK - PRODUCTIONS REVISIONS
2	2/20/14 DISK - PRODUCTIONS REVISIONS
3	2/20/14 DISK - PRODUCTIONS REVISIONS
4	2/20/14 DISK - PRODUCTIONS REVISIONS

DATE	10/23/13
BY	DA5
CHECKED	DA5
DATE	10/23/13
BY	DA5
CHECKED	DA5

SHEET NO.	A-16
DATE	10/23/13
BY	DA5
CHECKED	DA5
DATE	10/23/13
BY	DA5
CHECKED	DA5

NVR INC. 1100 W. 15TH AVENUE, SUITE 200, DENVER, CO 80202
 TEL: 303.733.8800 FAX: 303.733.8801
 WWW.NVRINC.COM
 PROJECT NO. 131702