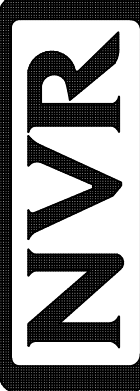
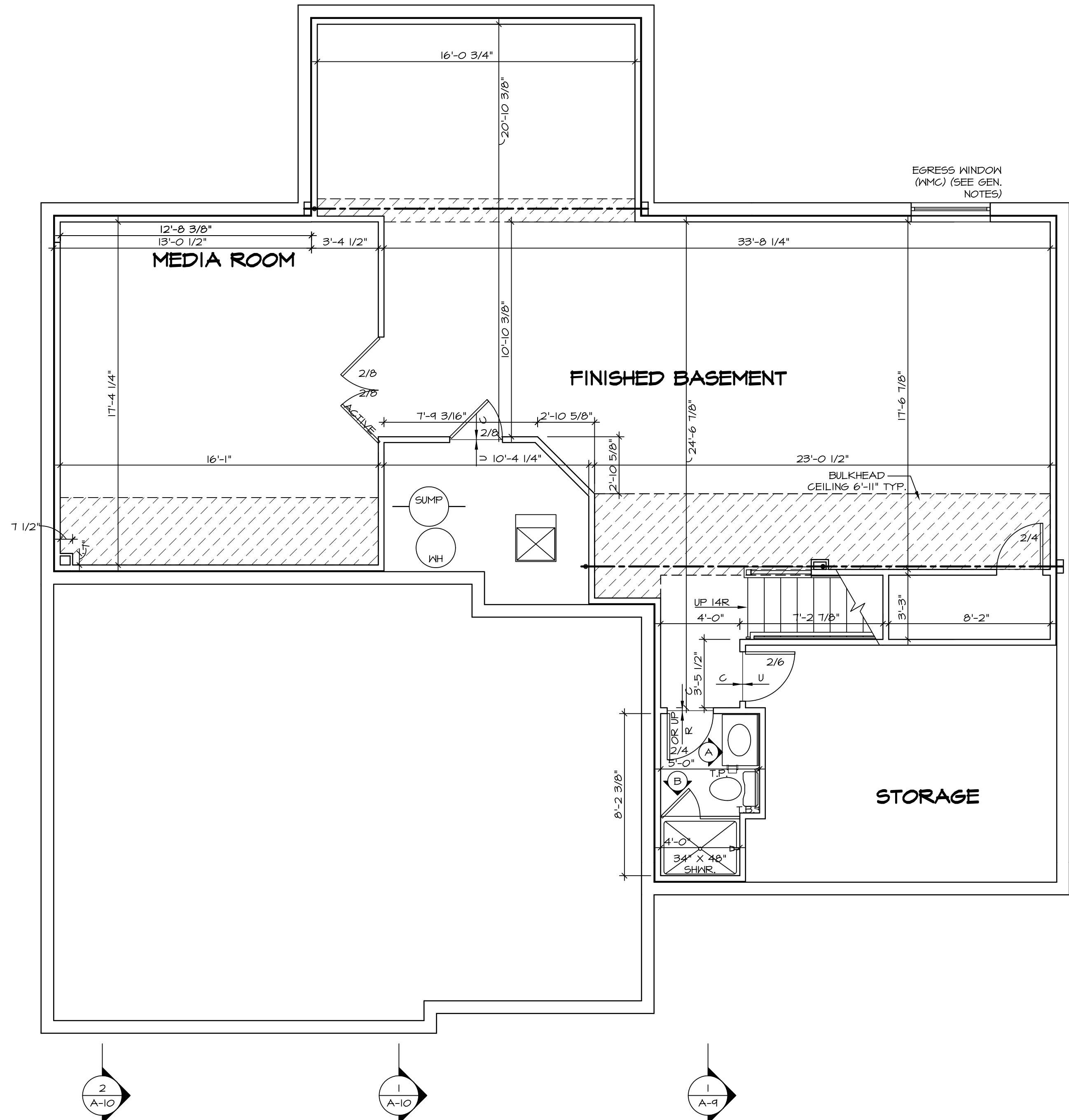


1  
A-5 PLUMBING PLAN  
SCALE: 1/4" = 1'-0"

SHEET NO. <b>A-5</b>	MODEL <b>LONDON</b>	SET NO. <b>LDN00</b>	OPTION DESCRIPTION	REMARKS
	DRAWING TITLE <b>PLUMBING PLAN</b>	VERSION <b>02</b>		
<b>33</b>	OPTION	DRAWN BY <b>PTH</b>		
		DATE: <b>8/13/15</b>		
		OPTION		
 NVR, Inc. Architects 5285 Westpark Drive, Suite 100 Frederick, MD 21703		NVR, Inc., owner, expressly reserves its copyright in these plans. These plans are not to be reproduced, changed, copied, or otherwise used in any way without the written consent of NVR, Inc.		
C:\NVR\Solves\LONDON_LDNO0_02\DCY-B1-0250\766502\SheetA.Lot_Specific\A-5_A-5_PLMG_LS.dwg 04/27/18 - 3:14 am				



**BASEMENT FLOOR PLAN**  
SCALE: 1/4" = 1'-0"

**LEGEND**

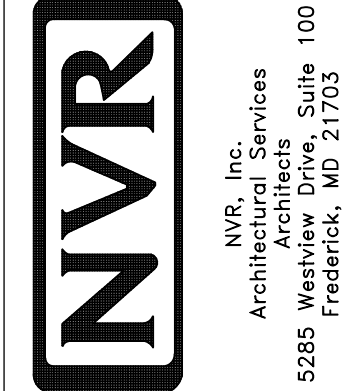
	BEARING WALL
	NON BEARING WALL
	INDICATES BEARING FROM POINT-LOAD ABOVE
	JACKS
	BEAM/HEADER
	PAD FOOTING
	STEEL COLUMN
	PORTAL FRAME
	JOIST/TRUSS
	LVL
	ENGINEERING PAGE NUMBER

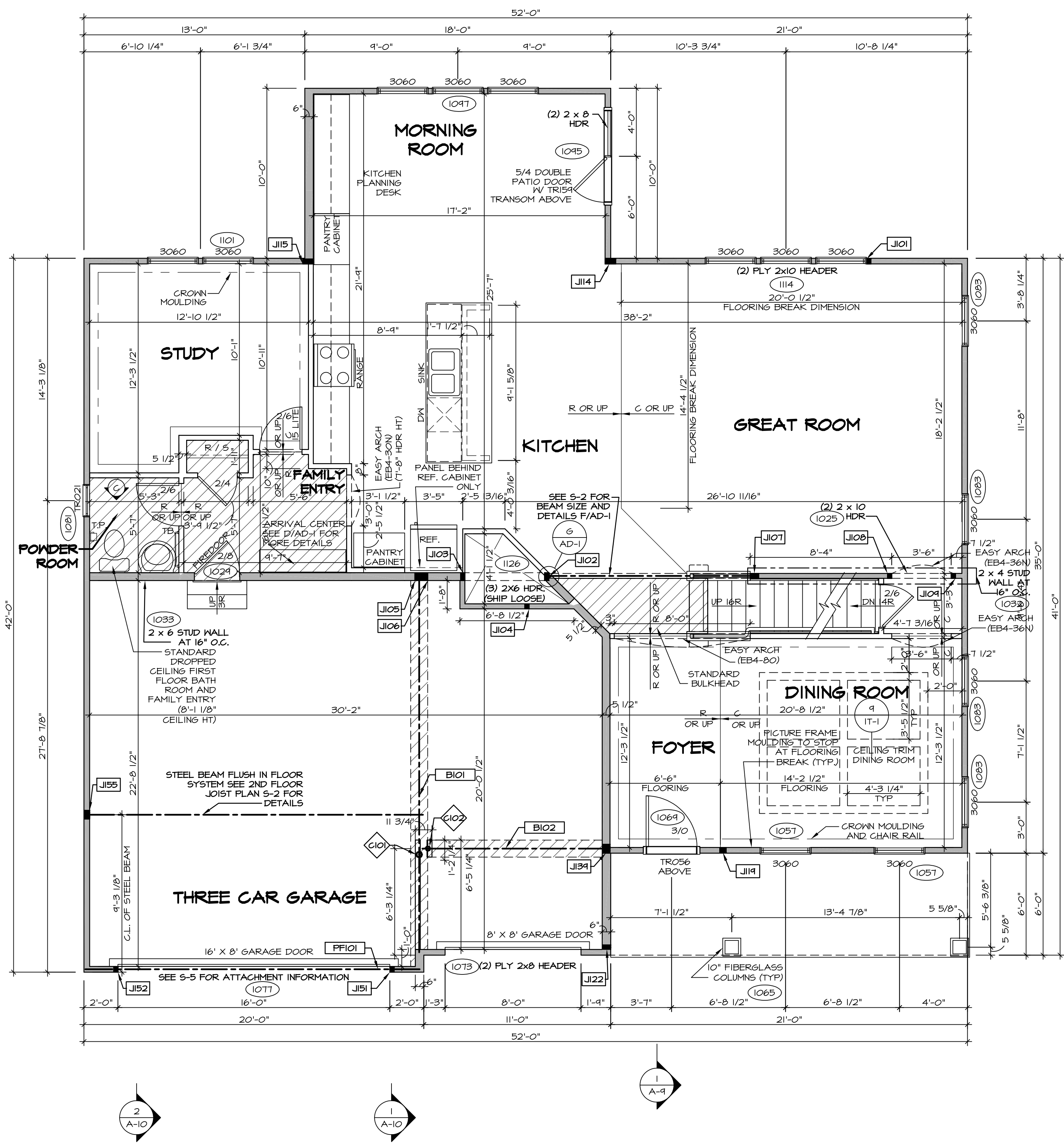
SEE FC DETAILS FOR FRAMING CONNECTORS

- FLOOR PLAN NOTES**
- ALL HEADERS ARE (2) 2x6 w/ 2x4 WALLS OR (3) 2x6 w/ 2x6 WALLS, UNLESS OTHERWISE NOTED.
  - ALL HEADERS TO HAVE (1) 2x4 OR 2x6 JACK EACH END, UNLESS OTHERWISE NOTED.
  - ALL EXTERIOR WALLS TO BE 4" AND ALL INTERIOR WALLS TO BE 3 1/2", UNLESS OTHERWISE NOTED.
  - HATCHED AREAS INDICATE DROPPED CEILINGS. ALL DROPPED CEILINGS ARE 12" UNLESS OTHERWISE NOTED.
  - SEE 'BRACED WALL PANEL DETAIL SHEET' FOR SPECIAL WALL FRAMING LOCATIONS AND HEADER SIZES, IF APPLICABLE.
  - SEE STANDARD DETAIL CATEGORY "IT" SHEET(S) FOR INTERIOR TRIM DETAILS.
  - SEE ARCHITECTURAL DETAIL SHEET "AD" FOR HOUSE SPECIFIC INTERIOR TRIM OPTION TABLE.
  - ALL WINDOWS HAVE 1'-0 1/2" HEADER HEIGHT UNLESS OTHERWISE NOTED.

- GYPSUM NOTES**
- AT GARAGE:  
GYPSUM BOARD AT COMMON WALLS, CEILINGS, BEAM WRAPS AND SUPPORTS PER STANDARD DETAIL FA-1(b) FIRE ASSEMBLIES OR AS REQUIRED BY LOCAL CODE.
- AT STAIRS:  
1/2" GYPSUM BOARD AT UNDERSIDE OF STAIRS AND WALLS IN CLOSET
- BASEMENT WITH I-JOIST FLOOR SYSTEM ABOVE:  
WITH OPTION "SGI" - DRYWALL UNFINISHED BASEMENT CEILING AREA
- NOTES:**
- 1/2" GYPSUM WALL BOARD REQUIRED ON CEILING IN UNFINISHED AREAS WHEN NO SPRINKLER SYSTEM IS INSTALLED.
  - A MAXIMUM AREA OF 80 SQ FT MAY BE OMITTED AS NEEDED FOR INSTALLATION OF PLUMBING, ELECTRICAL, AND/OR HVAC (TYPICALLY AN 8'-0" X 8'-0" CEILING SPACE ABOVE MECHANICAL AREA).
  - PROVIDE FIRE BLOCKING AS REQUIRED AT PERIMETER OF ANY AREAS WHERE DRYWALL HAS BEEN OMITTED.

SHEET NO. <b>A-6</b>	MODEL <b>LONDON</b>	SET NO. LDN00	REVISIONS	REMARKS
	DRAWING TITLE BASEMENT FLOOR PLAN	VERSION 02	REV. NO. DATE	
OPTION DESCRIPTION <b>37</b>	DRAWN BY <b>HD</b>	DATE: 8/13/15		
		OPTION		





**FIRST FLOOR PLAN**  
SCALE: 1/4" = 1'-0"

**FLOOR PLAN NOTES**

- ALL HEADERS ARE (2) 2x6 w/ 2x4 WALLS OR (3) 2x6 w/ 2x6 WALLS, UNLESS OTHERWISE NOTED.
- ALL HEADERS TO HAVE (1) 2x4 OR 2x6 JACK EACH END, UNLESS OTHERWISE NOTED.
- ALL EXTERIOR WALLS TO BE 4" AND ALL INTERIOR WALLS TO BE 3 1/2", UNLESS OTHERWISE NOTED.
- HATCHED AREAS INDICATE DROPPED CEILINGS. ALL DROPPED CEILINGS ARE 12" UNLESS OTHERWISE NOTED.
- SEE "BRACED WALL PANEL DETAIL SHEET" FOR SPECIAL WALL FRAMING LOCATIONS AND HEADER SIZES, IF APPLICABLE.
- SEE STANDARD DETAIL CATEGORY "IT" SHEET(S) FOR INTERIOR TRIM DETAILS.
- SEE ARCHITECTURAL DETAIL SHEET "AD" FOR HOUSE SPECIFIC INTERIOR TRIM OPTION TABLE.
- ALL WINDOWS HAVE 8'-0 1/2" HEADER HEIGHT UNLESS OTHERWISE NOTED.

**GYPSUM NOTES**

**AT GARAGE:**  
GYPSUM BOARD AT COMMON WALLS, CEILINGS, BEAM WRAPS AND SUPPORTS PER STANDARD DETAIL FA-1(b) FIRE ASSEMBLIES OR AS REQUIRED BY LOCAL CODE.

**AT STAIRS:**  
1/2" GYPSUM BOARD AT UNDERSIDE OF STAIRS AND WALLS IN CLOSET

**LEGEND**

- BEARING WALL
  - NON BEARING WALL
  - INDICATES BEARING FROM POINT-LOAD ABOVE
  - JACKS
  - BEAM/HEADER
  - PAD FOOTING
  - STEEL COLUMN
  - PORTAL FRAME
  - JOIST/TRUSS
  - LVL
  - ENGINEERING PAGE NUMBER
- SEE FC DETAILS FOR FRAMING CONNECTORS

**FIRST FLOOR JACK SCHEDULE**

IDENTIFIER	DESCRIPTION	OPTIONS	ENG. NUM.	REMARKS
JI01	JACK - (2) 2X4 SFF STUD GRADE		1114	
JI02	JACK - (2) 2X6 SFF STUD GRADE		1121	
JI03	JACK - (2) 2X6 SFF STUD GRADE		1121	
JI04	JACK - (2) 2X4 SFF STUD GRADE		1006	
JI05	JACK - (4) 2X6 SFF STUD GRADE	MAV	1036	
JI06	JACK - (2) 2X6 SFF STUD GRADE		1039, 1041	
JI07	JACK - (4) 2X4 SFF STUD GRADE		1027	
JI08	JACK - (2) 2X4 SFF STUD GRADE		1025	
JI09	JACK - (2) 2X4 SFF STUD GRADE		1025	
JI14	JACK - (5) 2X4 SFF#1	MAA	1018, 1021	
JI15	JACK - (5) 2X4 SFF#1	MAA, MAS	1018	
JI14	JACK - (5) 2X4 SFF STUD GRADE	ELA, MAD	1010	
JI22	JACK - (2) 2X6 SFF STUD GRADE	ELA, EPA	1065	
JI34	JACK - (4) 2X6 SFF STUD GRADE	EVF, EVV	1048	
JI51	JACK - (2) 2X4 SFF STUD GRADE		1077	
JI52	JACK - (2) 2X4 SFF STUD GRADE		1077	
JI55	JACK - (4) 2X4 SFF STUD GRADE	MAV	1122, 1124	

**FIELD INSTALLED FIRST FLOOR BEAM/HEADER SCHEDULE**

IDENTIFIER	DESCRIPTION	LENGTH	OPTIONS	ENG. NUM.	REMARKS
BIO1	BEAM STEEL - W8X21	22'-1"	MAV	1046, 1048, 1050	
BIO2	BEAM STEEL - W8X15	10'-11"	EVF, EVV	1046, 1048, 1050	
PFI01	EXT HEADER - 2X12 - 2 PLY	14'-8"		1077	

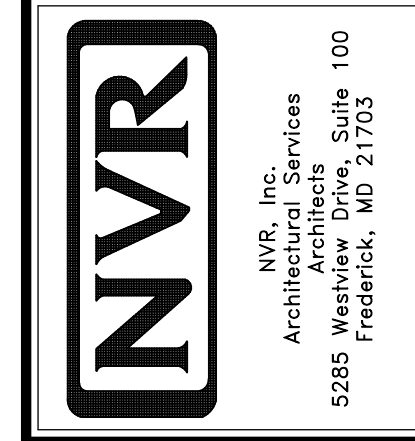
**STEEL COLUMN SCHEDULE**

IDENTIFIER	STYLE	HEIGHT	OPTIONS	ENG. NUM.	REMARKS
CI01	STANCHION - 4 IN DIA I16A ADJ	8'-11 5/8"	MAV/FBA	1036	
CI02	STANCHION - 3 IN DIA I16A ADJ	9'-7 1/8"	FBA	1036	

REVISIONS

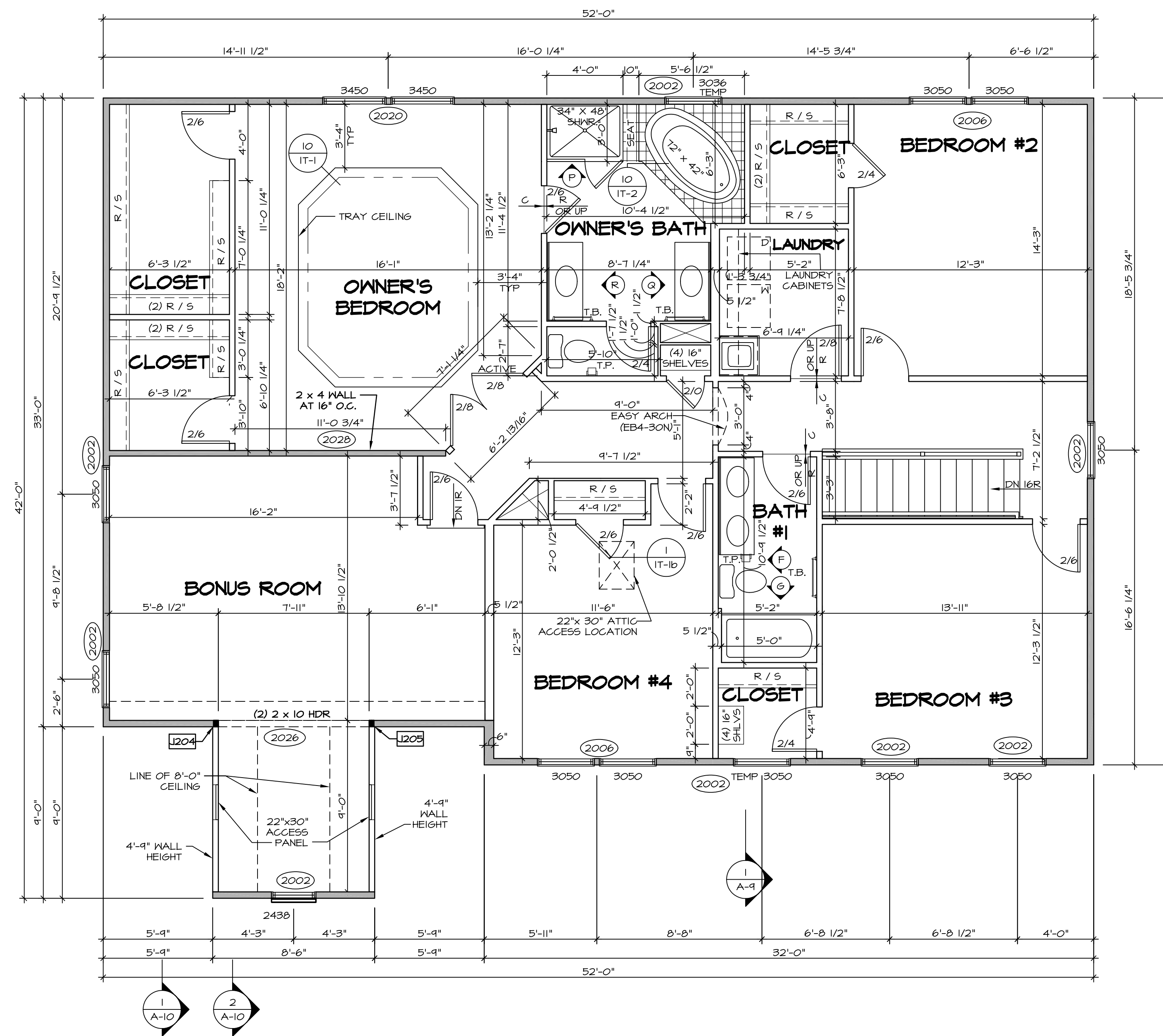
REV. NO.	DATE	REMARKS

NVR, Inc., owner, expressly reserves its copyright in these plans. These plans are not to be reproduced, changed, copied, or otherwise used without the written consent of NVR, Inc.



SET NO. LDN00  
VERSION 02  
DRAWN BY TVT  
DATE: 8/12/15  
OPTION

SHEET NO. A-7  
DRAWING TITLE FIRST FLOOR PLAN  
OPTION DESCRIPTION



**SECOND FLOOR PLAN**  
SCALE: 1/4" = 1'-0"

**LEGEND**

	BEARING WALL
	NON BEARING WALL
	INDICATES BEARING FROM POINT-LOAD ABOVE
	JACKS
	BEAM/HEADER
	PAD FOOTING
	STEEL COLUMN
	PORTAL FRAME
	JOIST/TRUSS
	LVL
	ENGINEERING PAGE NUMBER

SEE FC DETAILS FOR FRAMING CONNECTORS

- FLOOR PLAN NOTES**
- ALL HEADERS ARE (2) 2x6 w/ 2x4 WALLS OR (3) 2x6 w/ 2x6 WALLS, UNLESS OTHERWISE NOTED.
  - ALL HEADERS TO HAVE (1) 2x4 OR 2x6 JACK EACH END, UNLESS OTHERWISE NOTED.
  - ALL EXTERIOR WALLS TO BE 4" AND ALL INTERIOR WALLS TO BE 3 1/2", UNLESS OTHERWISE NOTED.
  - HATCHED AREAS INDICATE DROPPED CEILINGS. ALL DROPPED CEILINGS ARE 12" UNLESS OTHERWISE NOTED.
  - SEE "BRACED WALL PANEL DETAIL SHEET" FOR SPECIAL WALL FRAMING LOCATIONS AND HEADER SIZES, IF APPLICABLE.
  - SEE STANDARD DETAIL CATEGORY "IT" SHEET(S) FOR INTERIOR TRIM DETAILS.
  - SEE ARCHITECTURAL DETAIL SHEET "AD" FOR HOUSE SPECIFIC INTERIOR TRIM OPTION TABLE.
  - ALL WINDOWS HAVE 7'-0 1/2" HEADER HEIGHT UNLESS OTHERWISE NOTED.

- GYPSUM NOTES**
- AT GARAGE:**  
GYPSUM BOARD AT COMMON WALLS, CEILING, BEAM WRAPS AND SUPPORTS PER STANDARD DETAIL FA-1(b) FIRE ASSEMBLIES OR AS REQUIRED BY LOCAL CODE.
- AT STAIRS:**  
1/2" GYPSUM BOARD AT UNDERSIDE OF STAIRS AND WALLS IN CLOSET

**SECOND FLOOR JACK SCHEDULE**

IDENTIFIER	DESCRIPTION	OPTIONS	ENG. N.M.	REMARKS
J204	JACK - (2) 2X4 SFF STUD GRADE	MAV		
J205	JACK - (2) 2X4 SFF STUD GRADE	MAV		

**REMARKS**

REV. NO.	DATE	DESCRIPTION

MODEL: LONDON  
DRAWING TITLE: SECOND FLOOR PLAN  
OPTION DESCRIPTION: OPTION

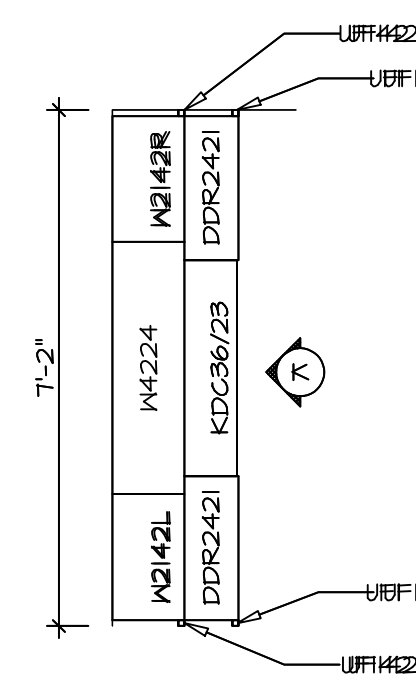
**A-9**

41

**NVR**  
NVR, Inc.  
Architectural Services  
100  
5285 Washburne Rd  
Frederick, MD 21703

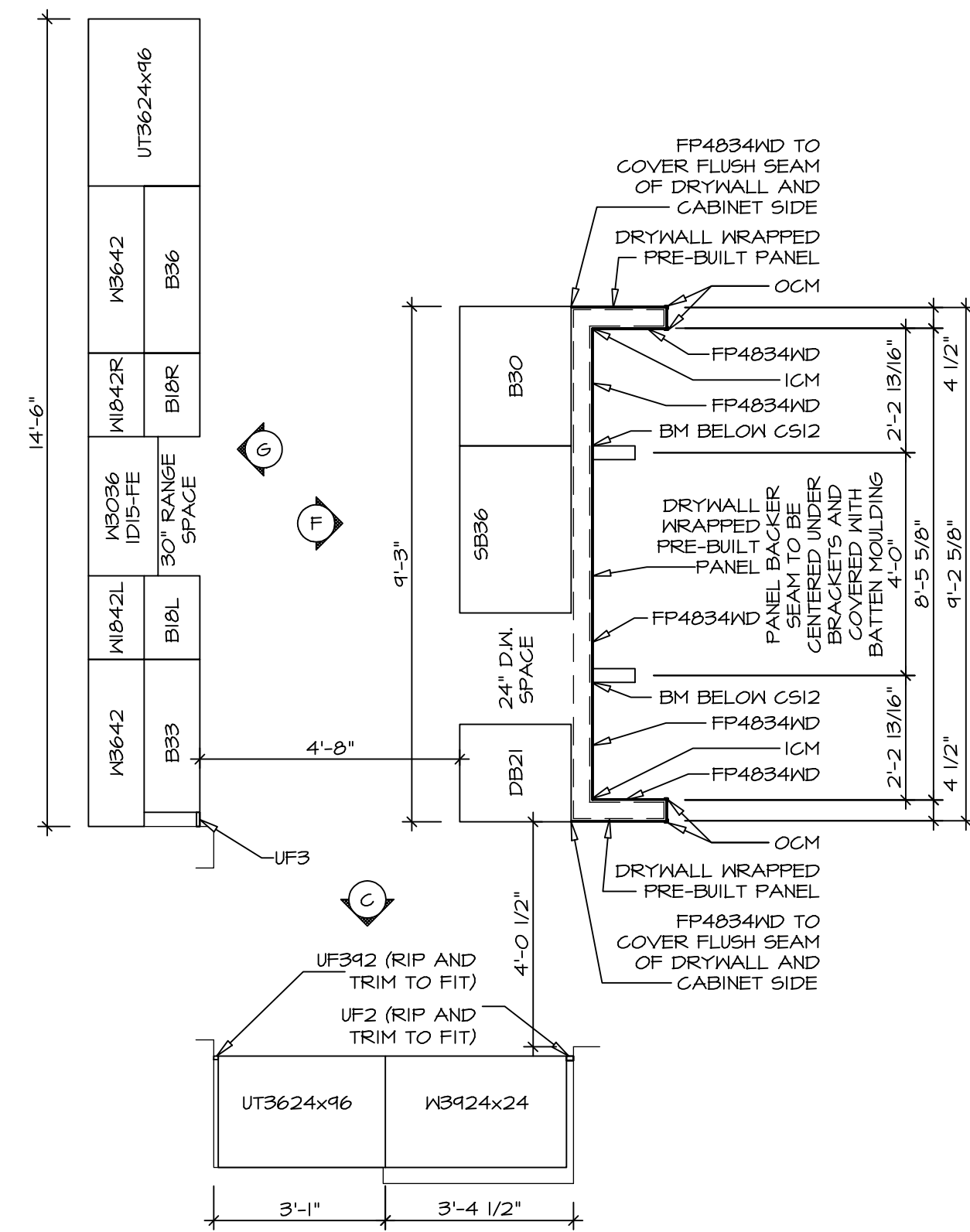
SET NO. LDN00  
VERSION 02  
DRAWN BY SDTT  
DATE: 7/3/15  
OPTION

C:\NVR\Solves\LONDON\_LDNO0\_02\DC-B1-0250\766502\Sheets\Lot\_Specific\41\_A-9\_PLN2\_LS.dwg 04/27/18 - 3:14 am



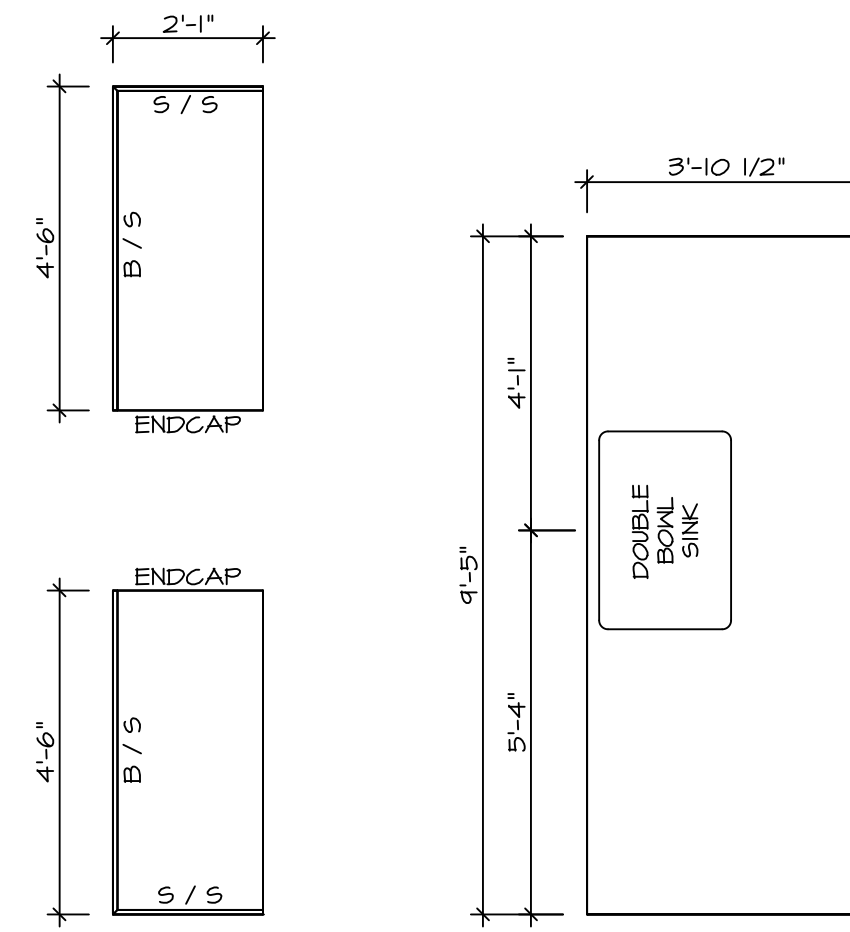
**CABINET PLAN  
KC - 2963**

SCALE: 3/8" = 1'-0" A-12



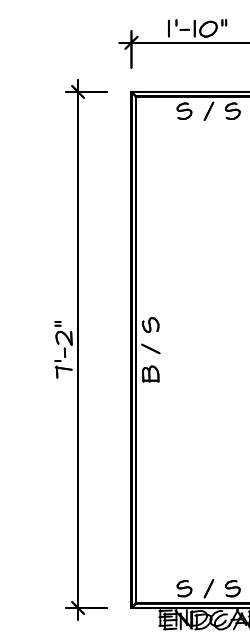
**CABINET PLAN  
KC - 2960**

SCALE: 3/8" = 1'-0" A-12



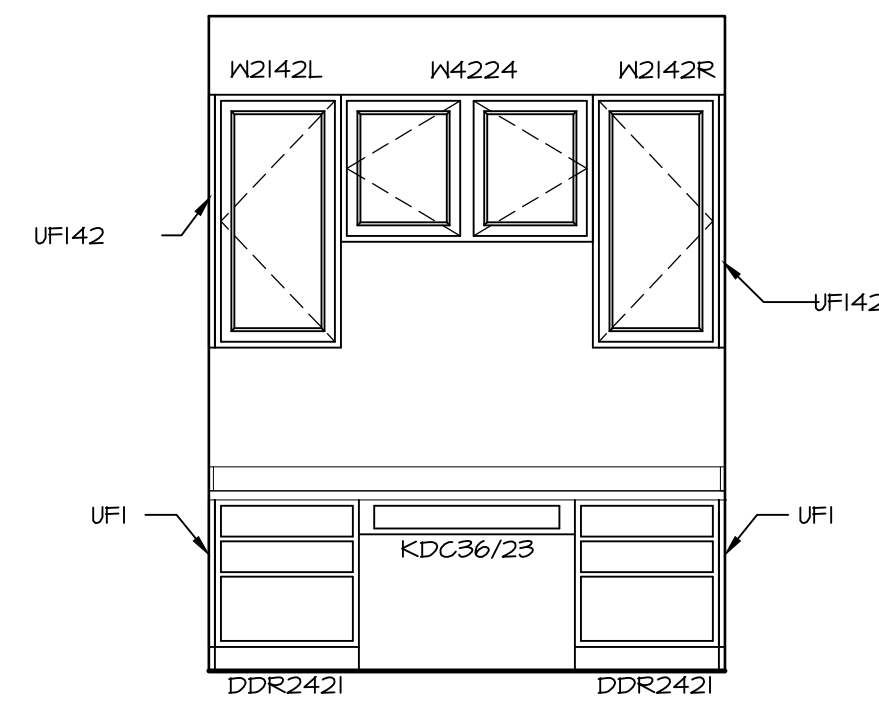
**COUNTERTOP PLAN  
KC - 2960**

SCALE: 3/8" = 1'-0" A-12



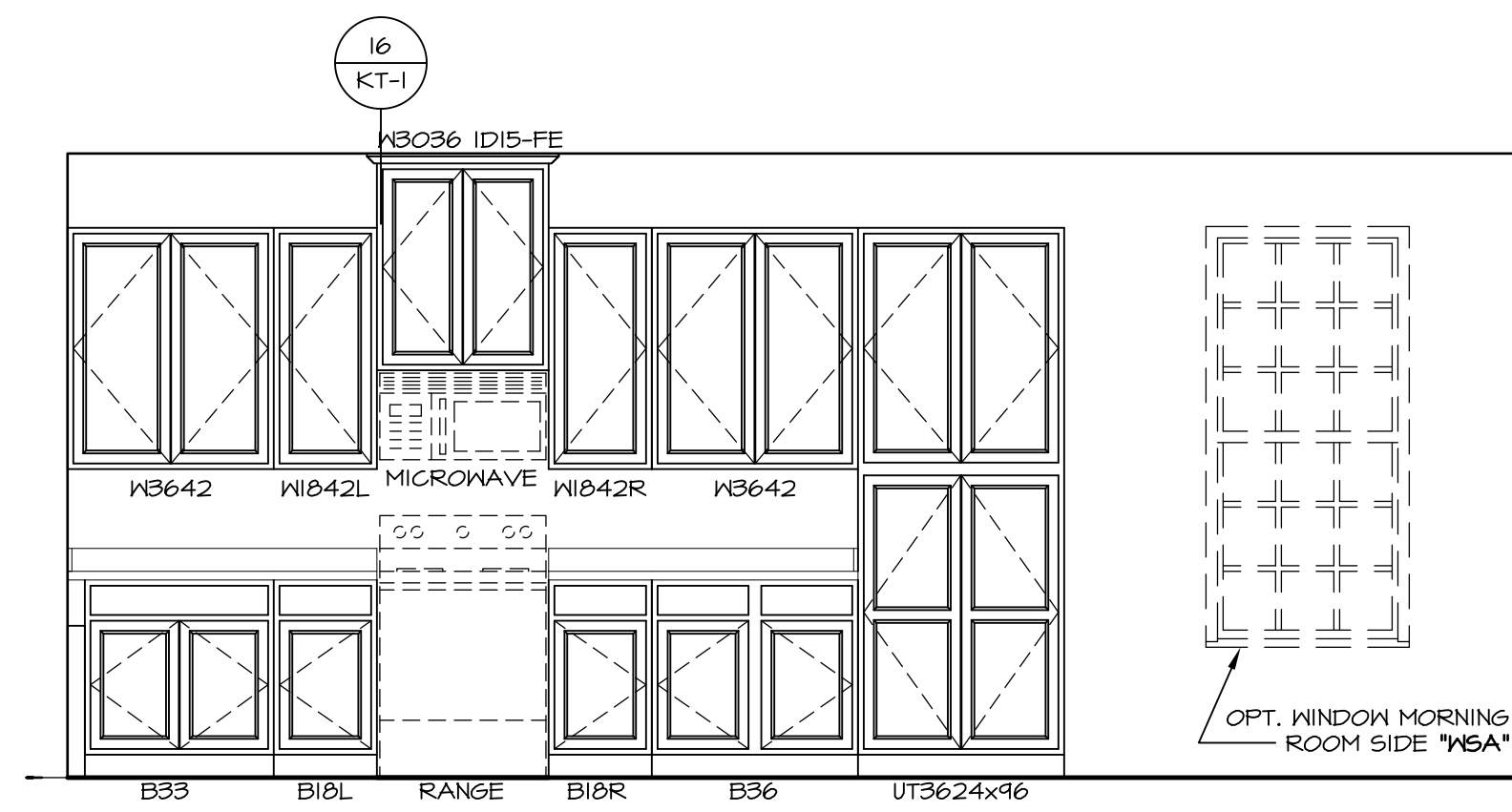
**COUNTERTOP PLAN  
KC - 2963**

SCALE: 3/8" = 1'-0" A-12



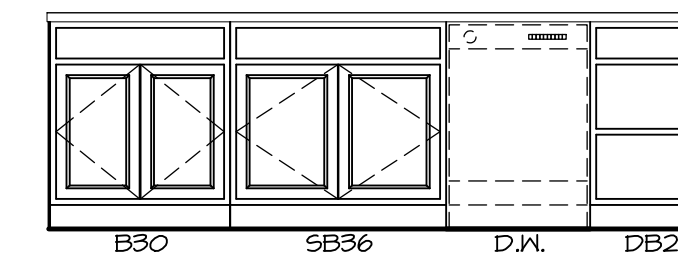
**ELEVATION "K"**

SCALE: 3/8" = 1'-0" K



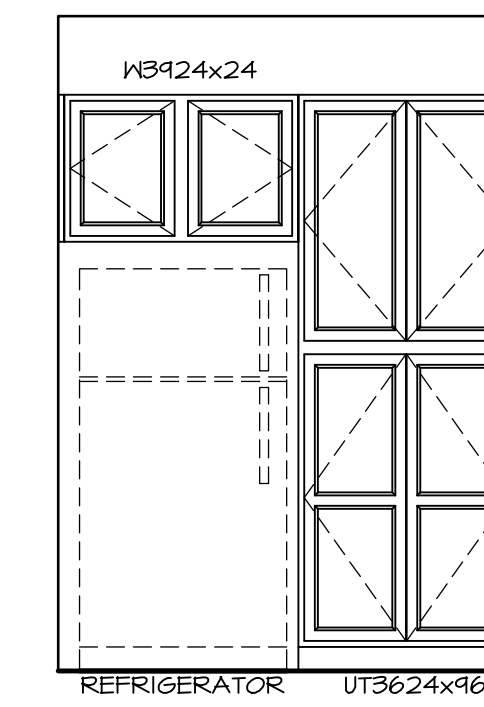
**ELEVATION "G"**

SCALE: 3/8" = 1'-0" G



**ELEVATION "F"**

SCALE: 3/8" = 1'-0" F



**ELEVATION "C"**

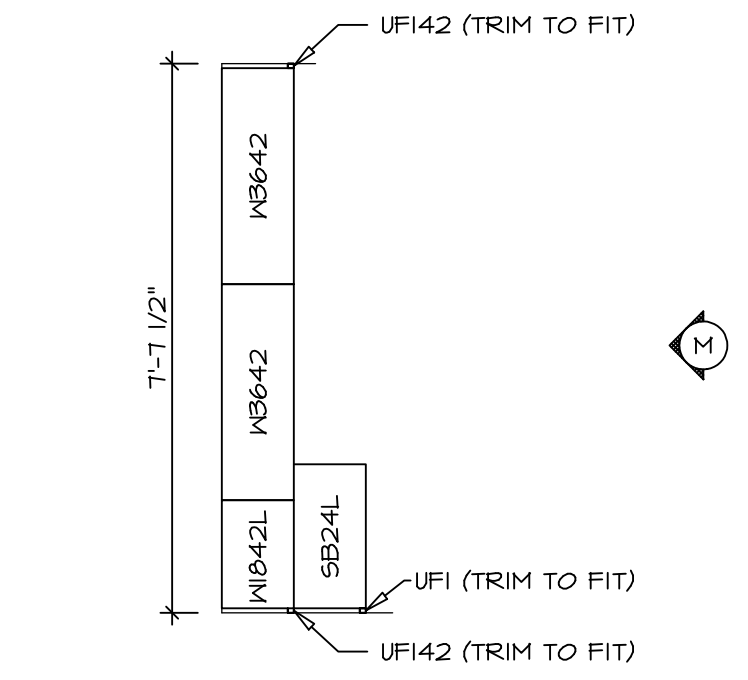
SCALE: 3/8" = 1'-0" C

SHEET NO. <b>A-12</b>	MODEL <b>LONDON</b>	DRAWING TITLE <b>KITCHEN PLAN</b>	OPTION DESCRIPTION <b>OPTION</b>	REV. NO.	DATE	REMARKS

NVR, Inc., owner, expressly reserves its copyright in these plans. These plans are not to be reproduced, changed, copied, or otherwise used in any way without the written consent of NVR, Inc.

**NVR**  
NVR, Inc.  
Architectural Services  
5285 Westpark Drive  
Frederick, MD 21703

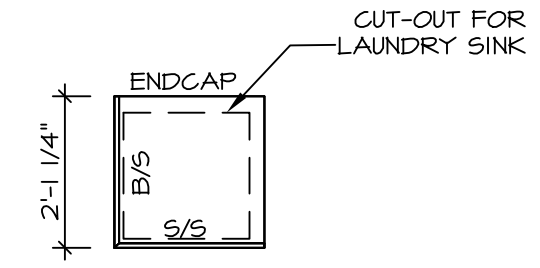
SET NO. LDN00  
VERSION 02  
DRAWN BY SDTT  
DATE: 8/6/15  
OPTION  
C:\NVR\Solves\LONDON\_LDNO0\_02\DCY-B1-0250\76650A\SheetA.ctb  
Specific: S1\_A-12\_KIT\_LS.dwg  
04/24/18 - 3:14 am



**CABINET PLAN**  
**KC - 2964**

SCALE: 3/8" = 1'-0"

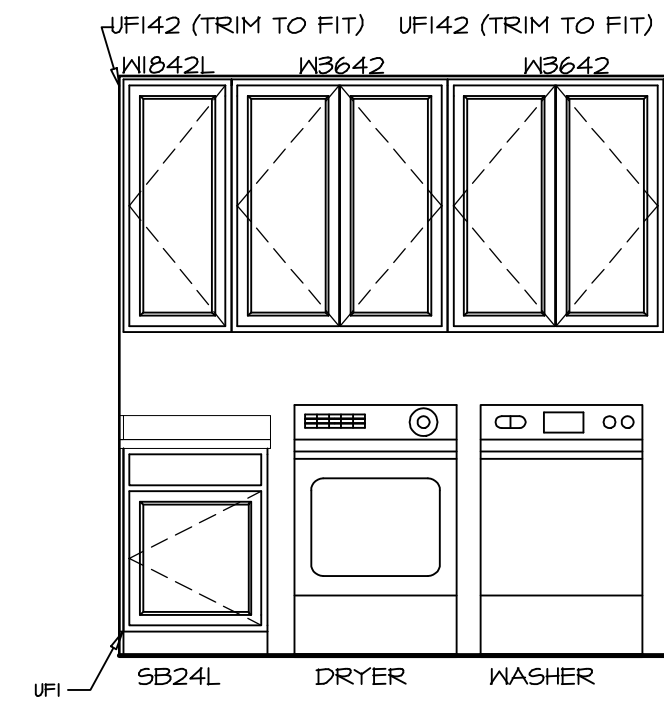
1  
A-12b



**COUNTERTOP PLAN**  
**KC - 2964**

SCALE: 3/8" = 1'-0"

2  
A-12b



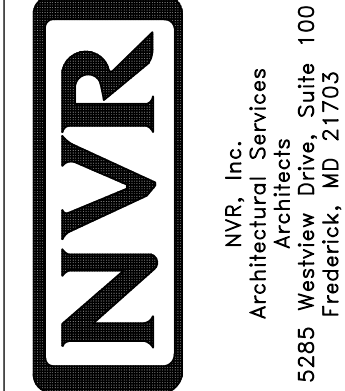
**ELEVATION "M"**

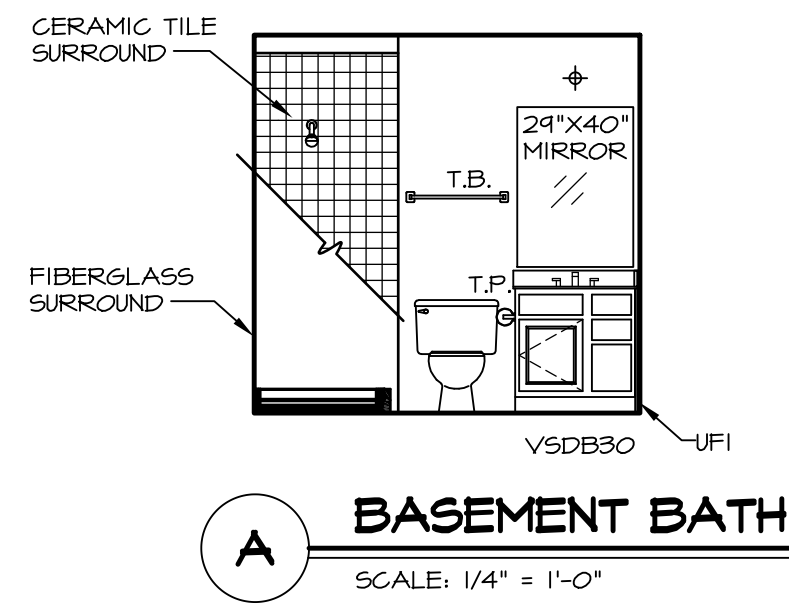
SCALE: 3/8" = 1'-0"

M

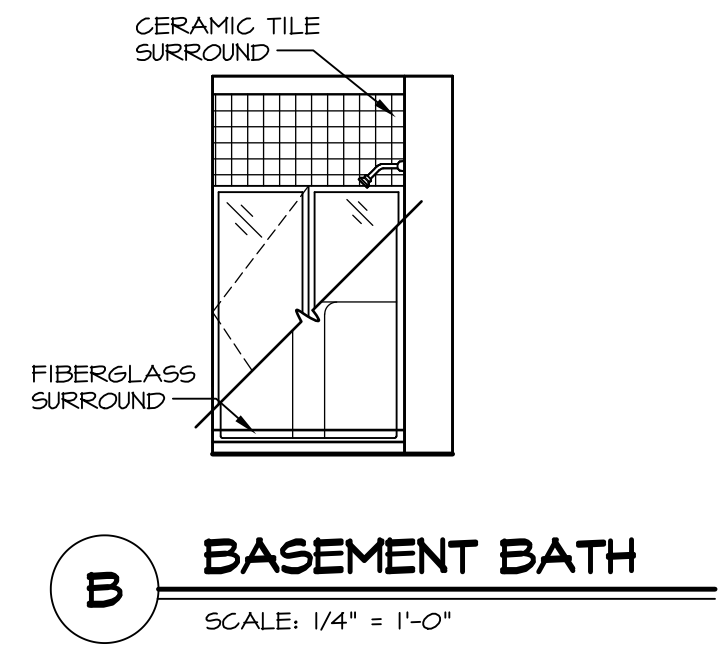
SHEET NO. <b>A-12b</b>	MODEL <b>LONDON</b>	SET NO. <b>LDN00</b>	REVISIONS	REMARKS
	DRAWING TITLE <b>KITCHEN PLAN - ADDITIONAL CABINETS</b>	VERSION <b>02</b>	DATE: <b>8/6/15</b>	
52	OPTION DESCRIPTION	DRAWN BY <b>SDTT</b>		
		DATE: <b>8/6/15</b>		

NVR, Inc., owner, expressly reserves its copyright in these plans. These plans are not to be reproduced, changed, adapted in any way, or used for any other project without the written consent of NVR, Inc.

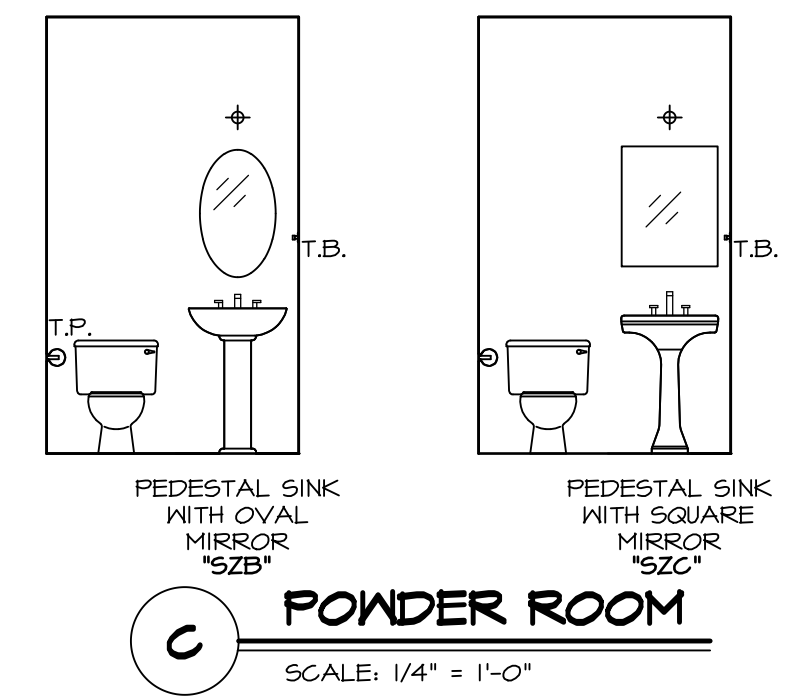




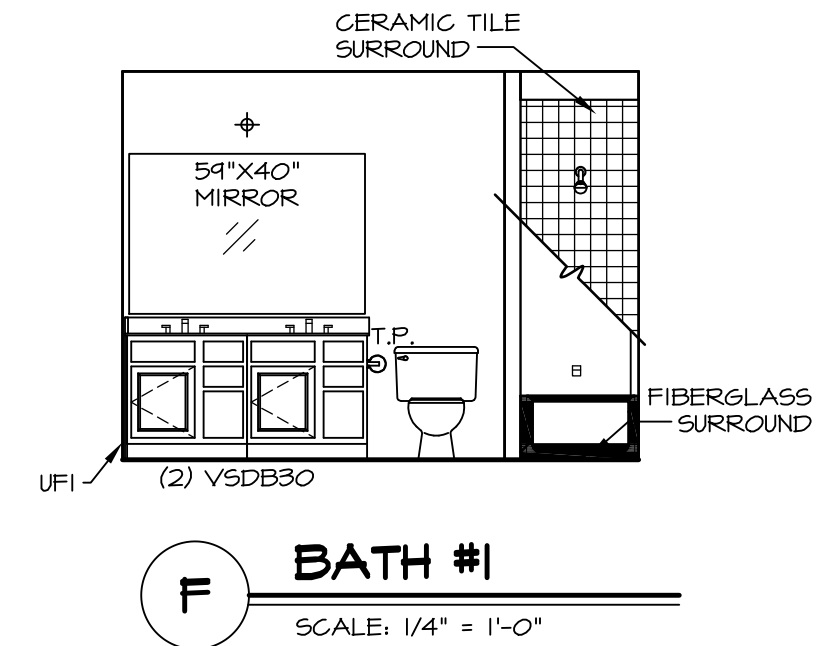
**A** **BASEMENT BATH**  
SCALE: 1/4" = 1'-0"



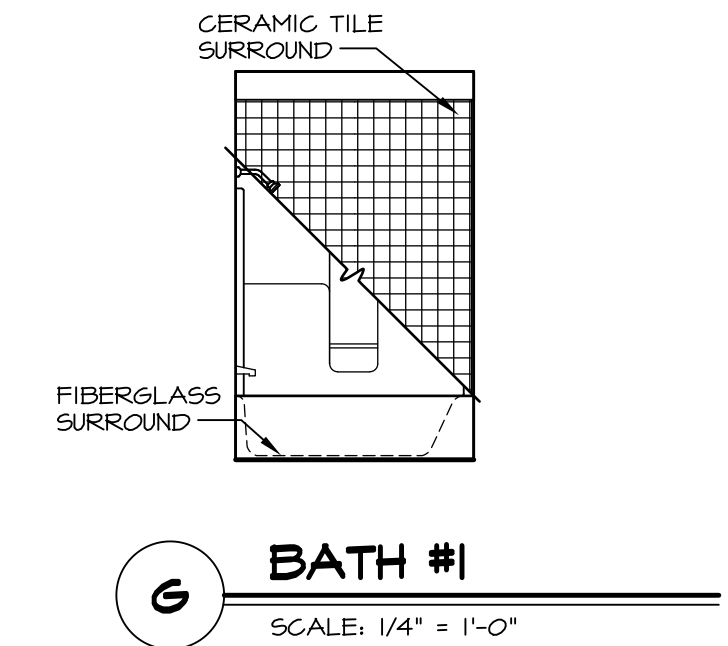
**B** **BASEMENT BATH**  
SCALE: 1/4" = 1'-0"



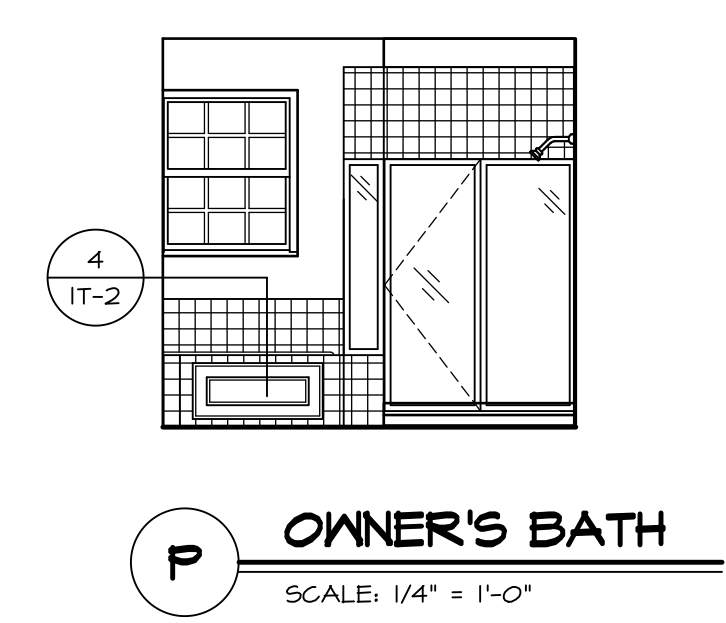
**C** **POWDER ROOM**  
SCALE: 1/4" = 1'-0"



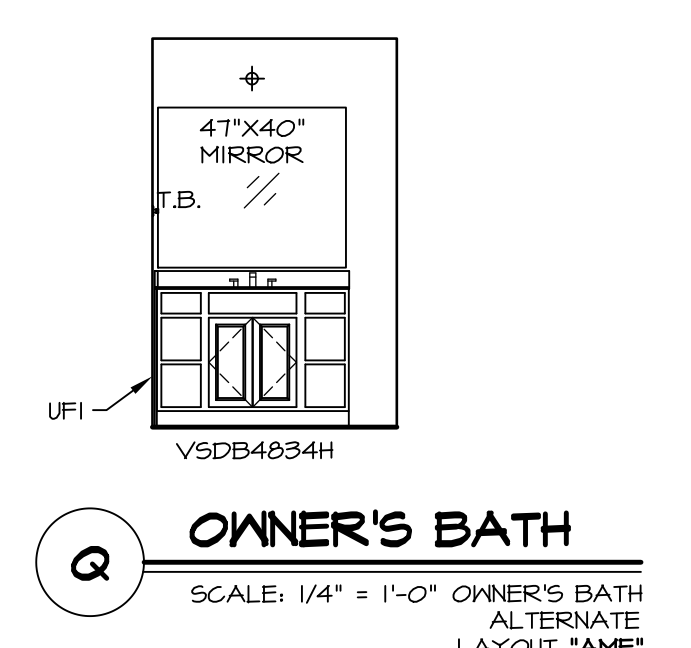
**F** **BATH #1**  
SCALE: 1/4" = 1'-0"



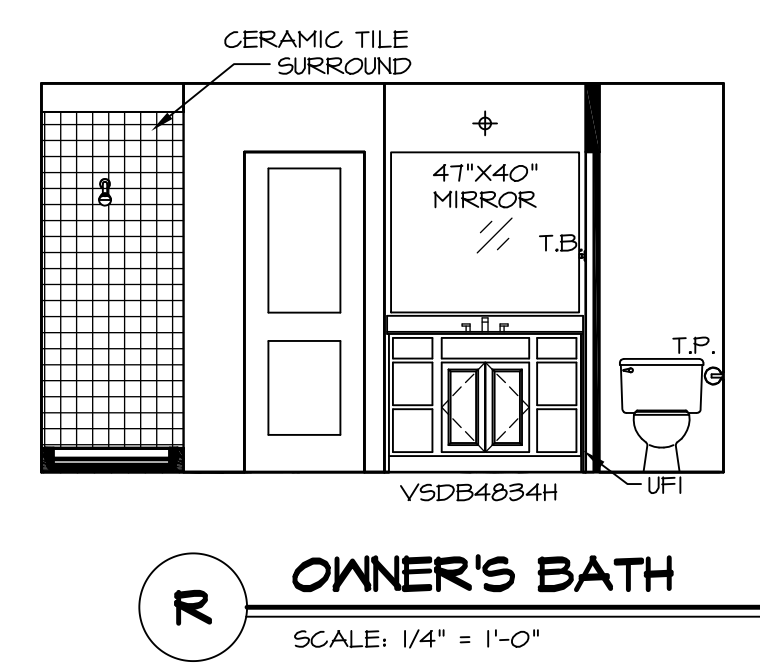
**G** **BATH #1**  
SCALE: 1/4" = 1'-0"



**P** **OWNER'S BATH**  
SCALE: 1/4" = 1'-0"



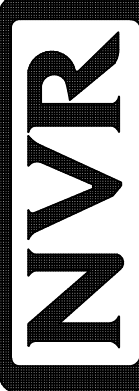
**Q** **OWNER'S BATH**  
SCALE: 1/4" = 1'-0" OWNER'S BATH ALTERNATE LAYOUT "AMP"

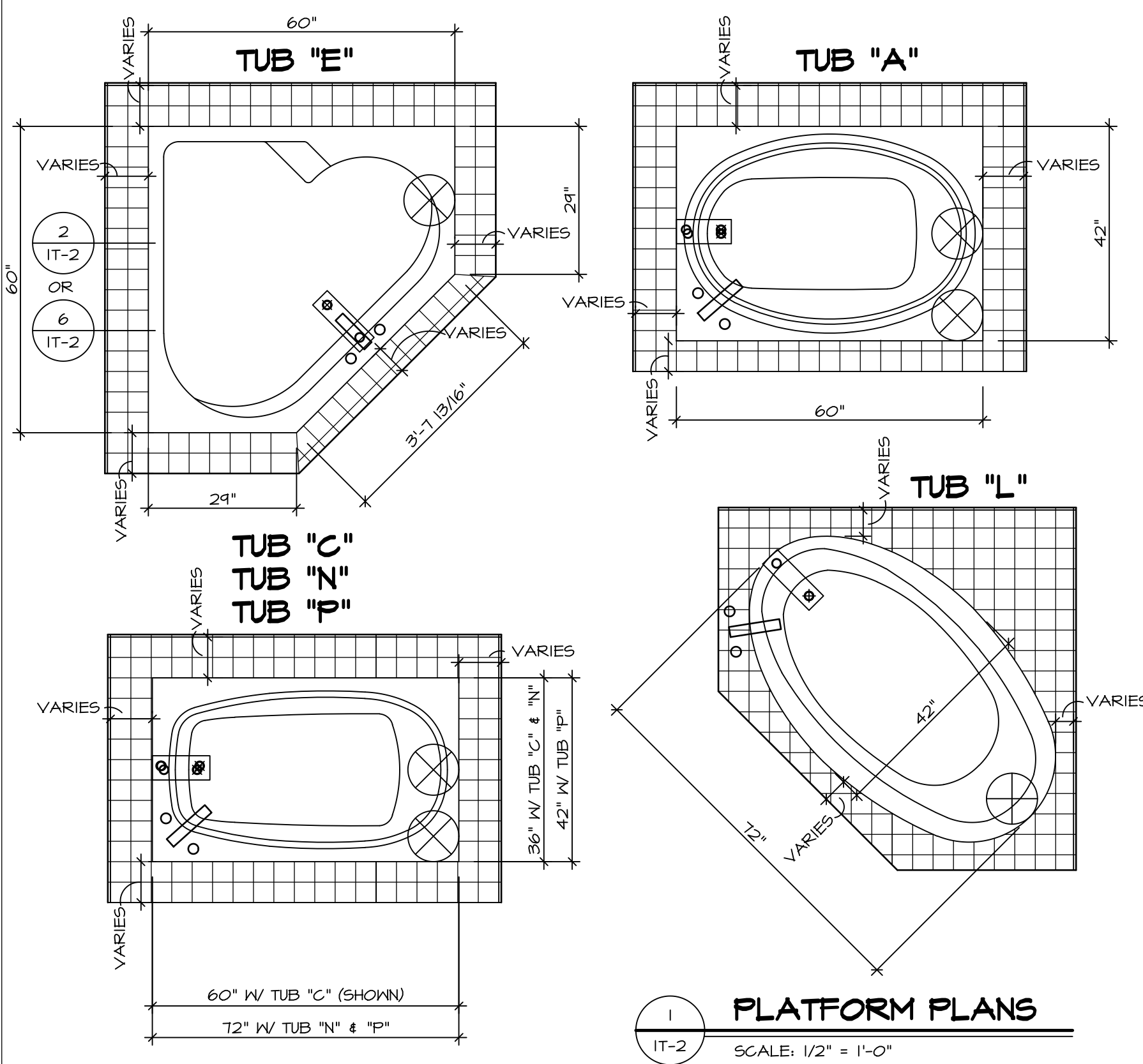


**R** **OWNER'S BATH**  
SCALE: 1/4" = 1'-0"

**NOTES:**

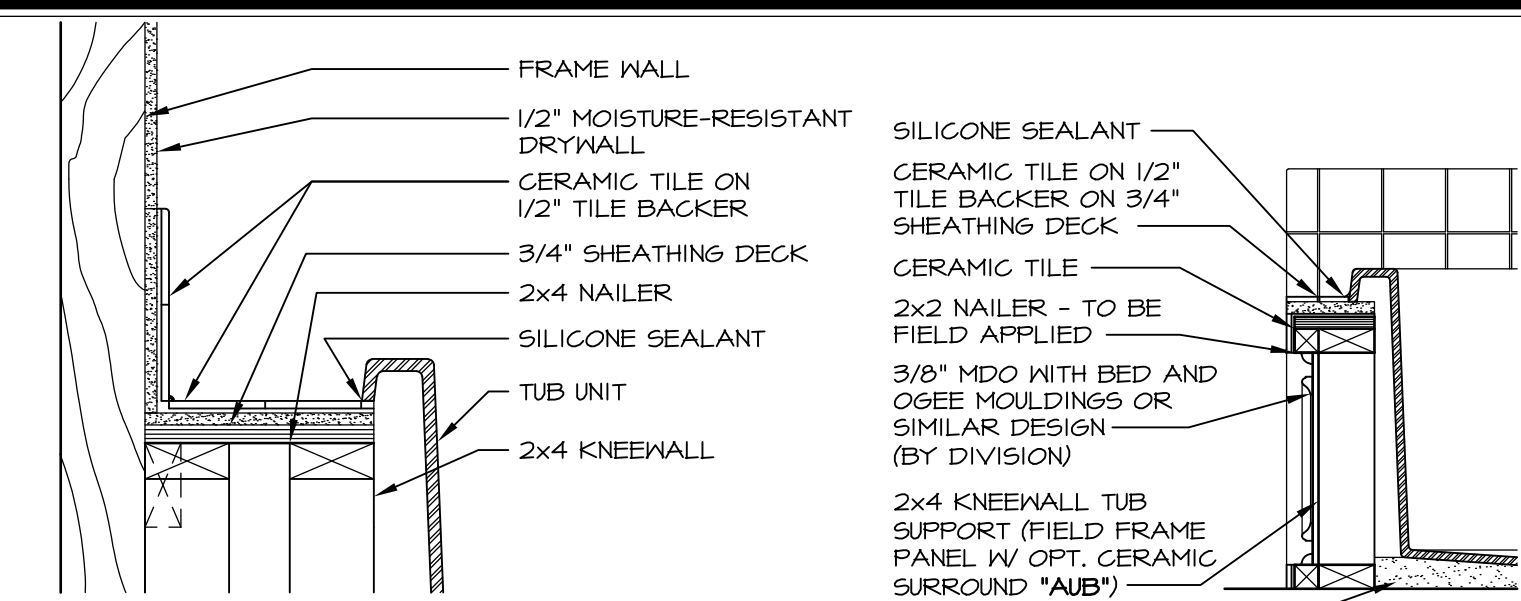
1. TEMPERED GLASS SHOWER ENCLOSURE WITH SWING DOOR OR OPTIONAL SLIDING DOOR BY DIVISION
2. TUB ACCESS PANELS PROVIDED AS NEEDED, ALL MATERIALS BY DIVISION
3. REFER TO SHEET IT-2 FOR TUB AND SHOWER DETAILS.
4. ALL VSD34-42 DRAWERS TO BE SET ON RIGHT HAND.
5. BATH ELEVATIONS ARE SHOWN PER PLAN.

SHEET NO. <b>A-13</b>	MODEL <b>LONDON</b>	SET NO. LDN00	VERSION 02	DRAWN BY SDTT	DATE: 7/30/15	OPTION
		DRAWING TITLE <b>BATH ELEVATIONS</b>				
OPTION DESCRIPTION		NVR, Inc. owner, expressly reserves its copyright in these architectural plans. These plans are not to be reproduced, changed, copied, or otherwise used in any way without the written consent of NVR, Inc.				
55		 NVR, Inc. Architectural Services Architects 5285 Westover Hills Frederick, MD 21703				
C:\NVR\Solves\LONDON_LDNO0_02\DCY-B1-0250\76630A\SheetA Lot_Specific\55 A-13 BATH_LS.dwg 04/24/19 - 3:14 pm						

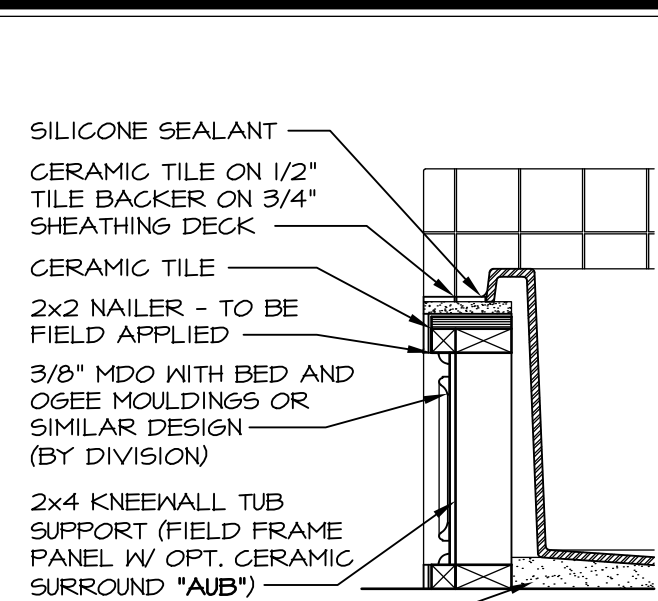


**1 PLATFORM PLANS**  
SCALE: 1/2" = 1'-0"

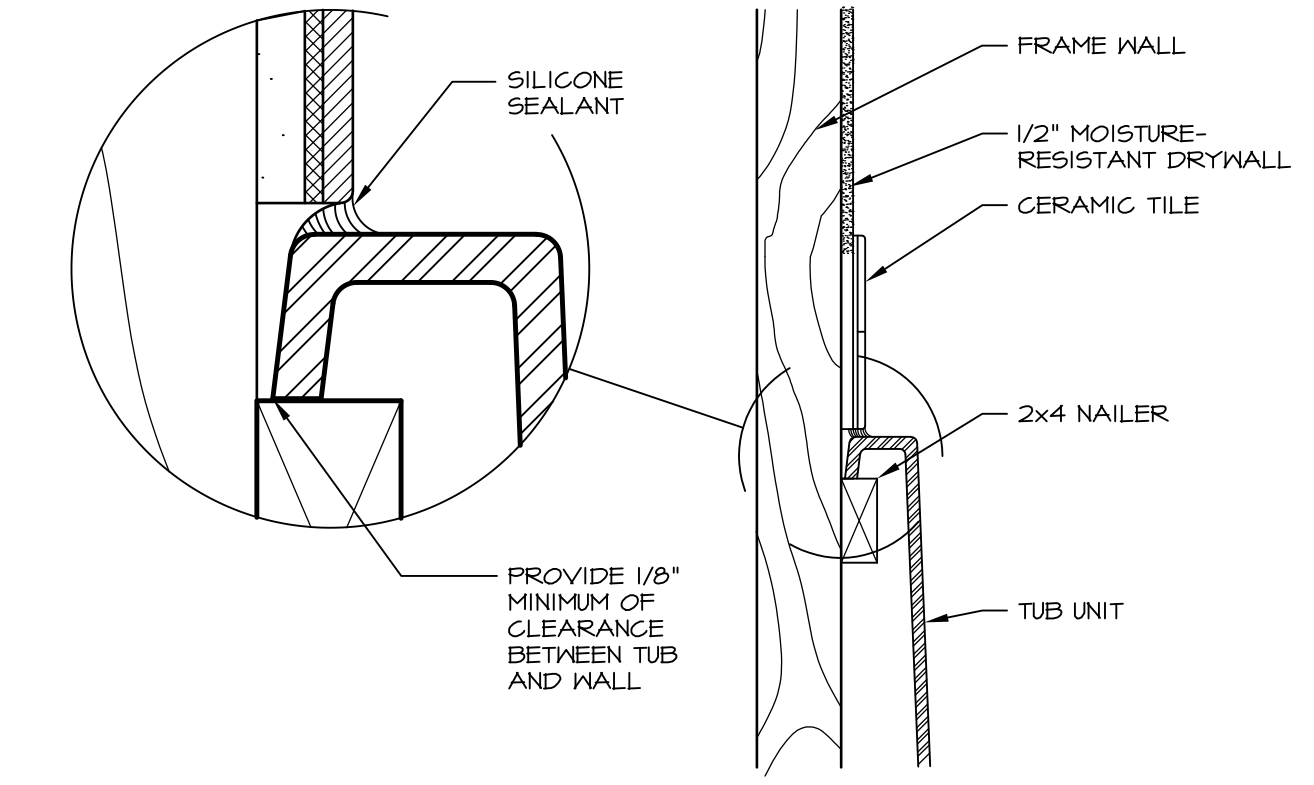
TUB	MANUF.	HEIGHT	WIDTH	LENGTH	TUB DECK PANEL HEIGHT
"A"	KOHLER/STERLING	18 3/4"	42"	60"	17 1/8"
"C"	KOHLER/STERLING	18 3/4"	36"	60"	17 1/8"
"E"	KOHLER/STERLING	19 1/2"	60"	60"	17 7/8"
"L"	KOHLER/STERLING	18 1/2"	42"	72"	16 7/8"
"N"	KOHLER/STERLING	18 3/4"	36"	72"	17 1/8"
"P"	KOHLER/STERLING	18 3/4"	42"	72"	17 1/8"



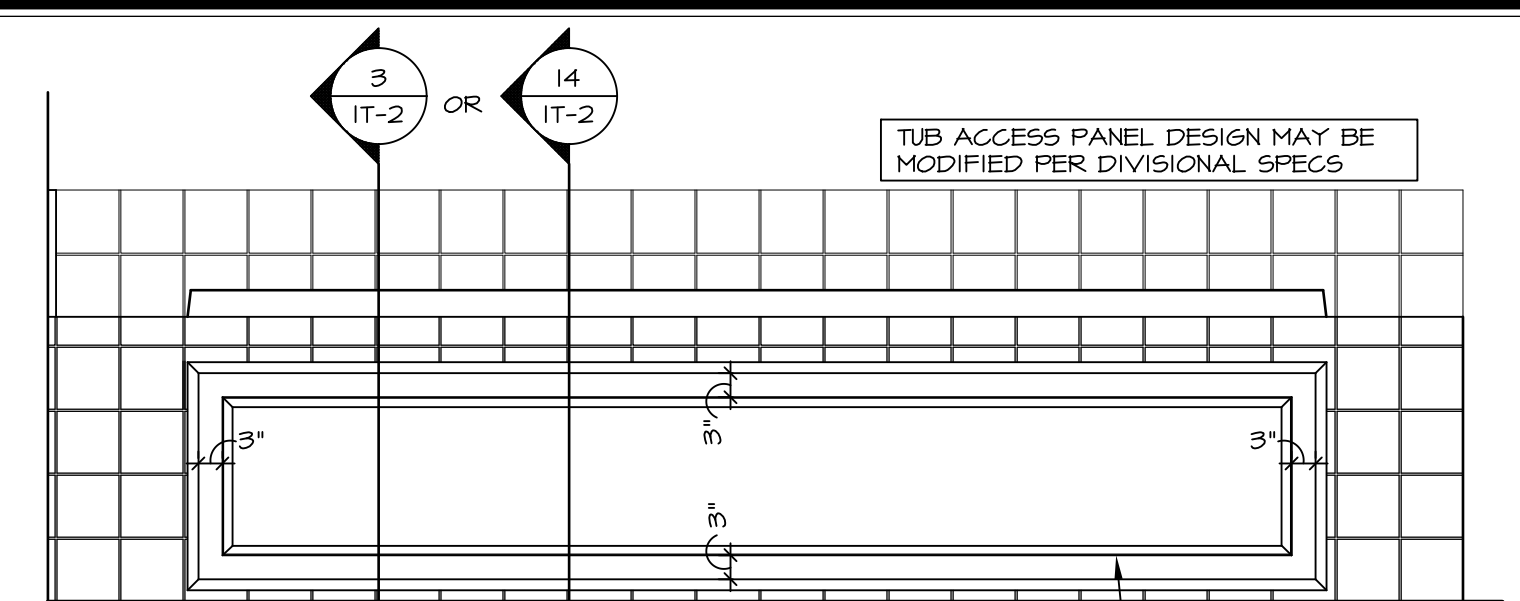
**2 SECTION OF TUB ON PLATFORM CONDITION**  
SCALE: 1" = 1'-0"



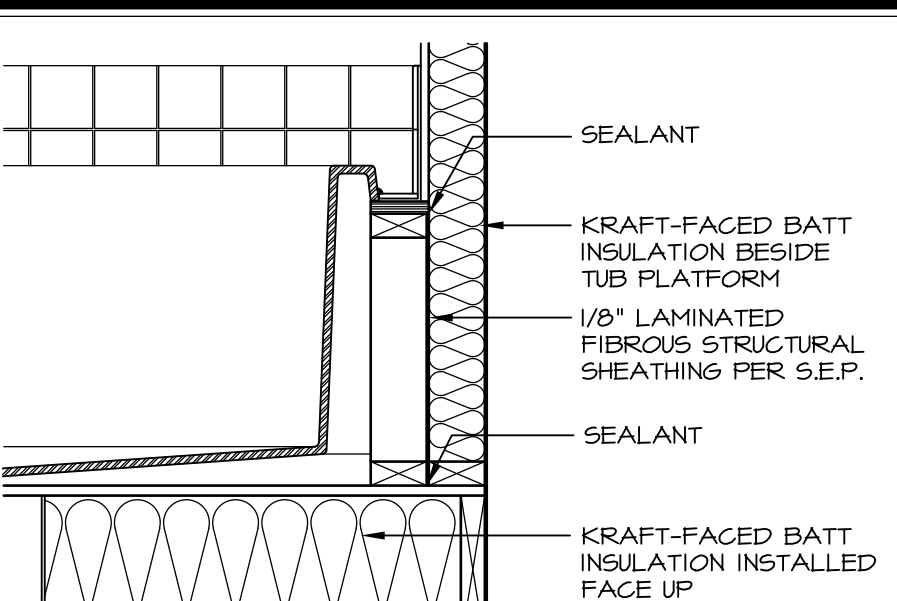
**3 SECTION**  
SCALE: 1" = 1'-0"



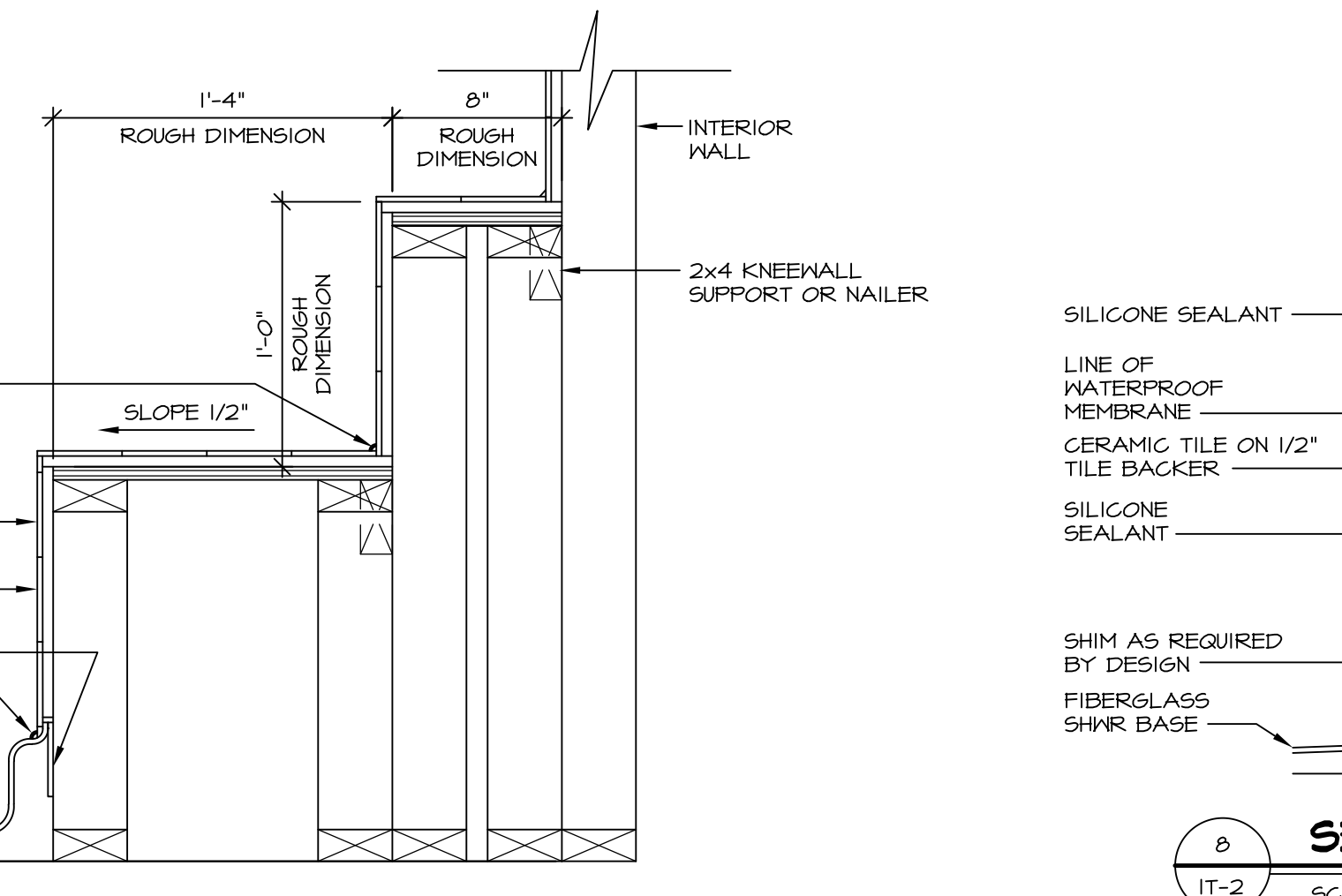
**6 SECTION OF TUB TO WALL CONDITION**  
SCALE: 1 1/2" = 1'-0"



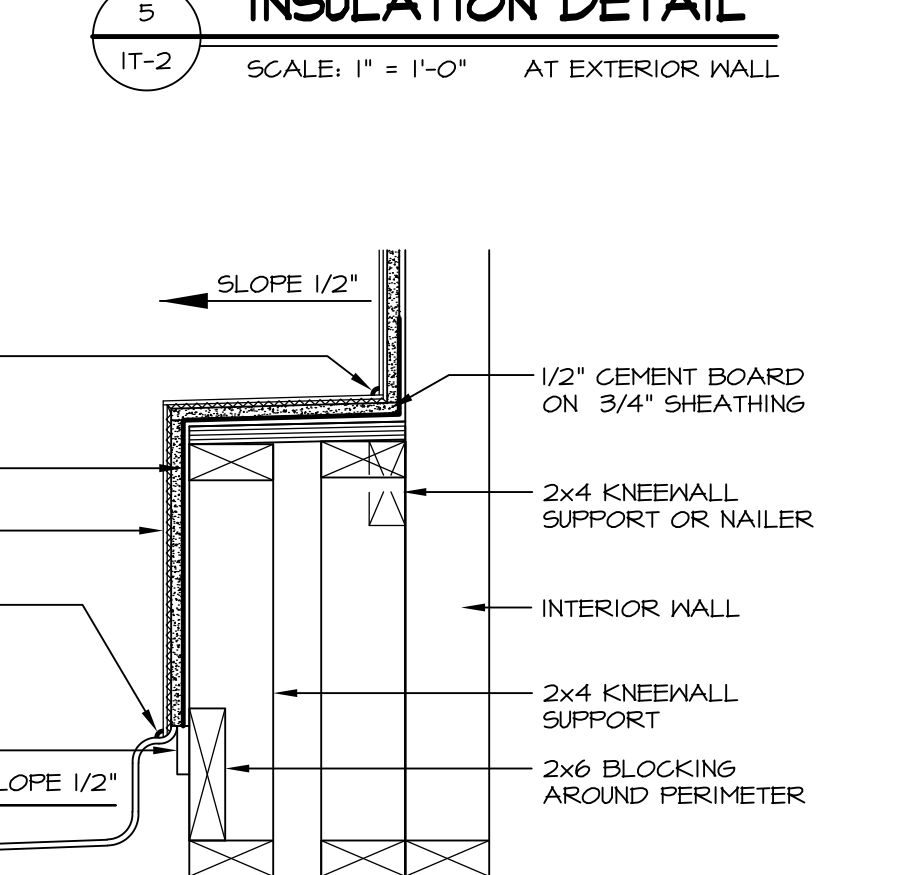
**4 ELEVATION**  
SCALE: 1/2" = 1'-0"



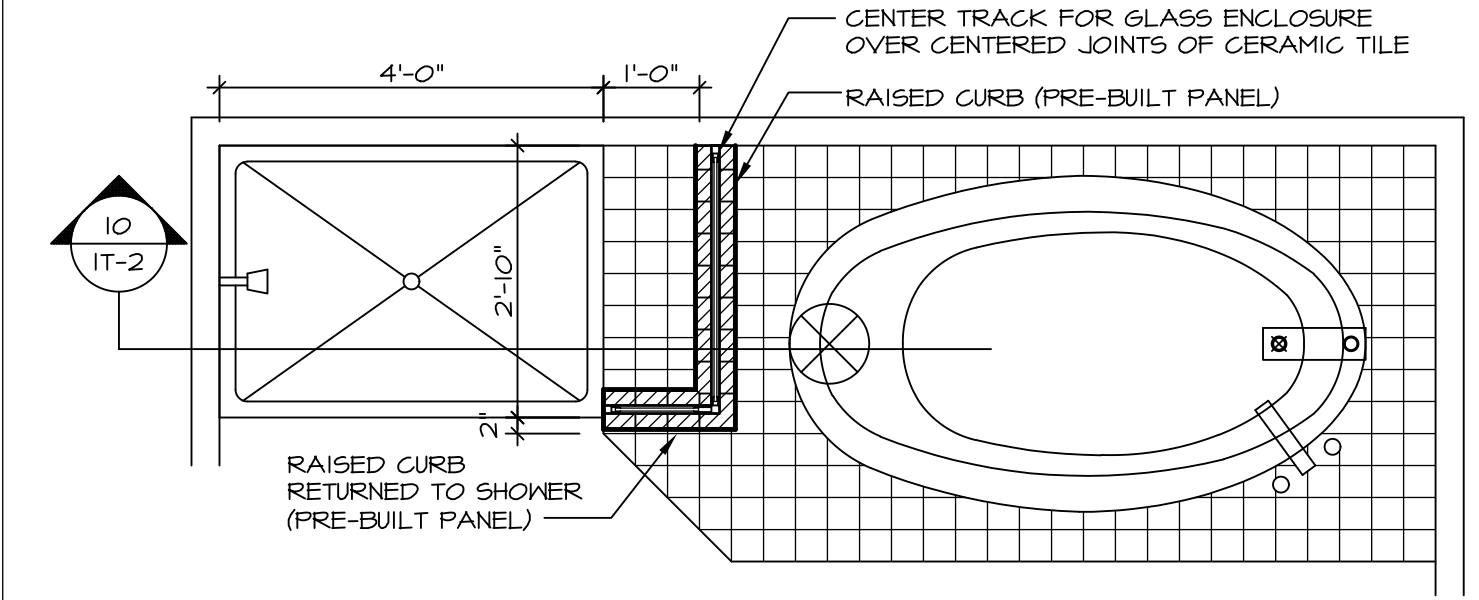
**5 INSULATION DETAIL**  
SCALE: 1" = 1'-0" AT EXTERIOR WALL



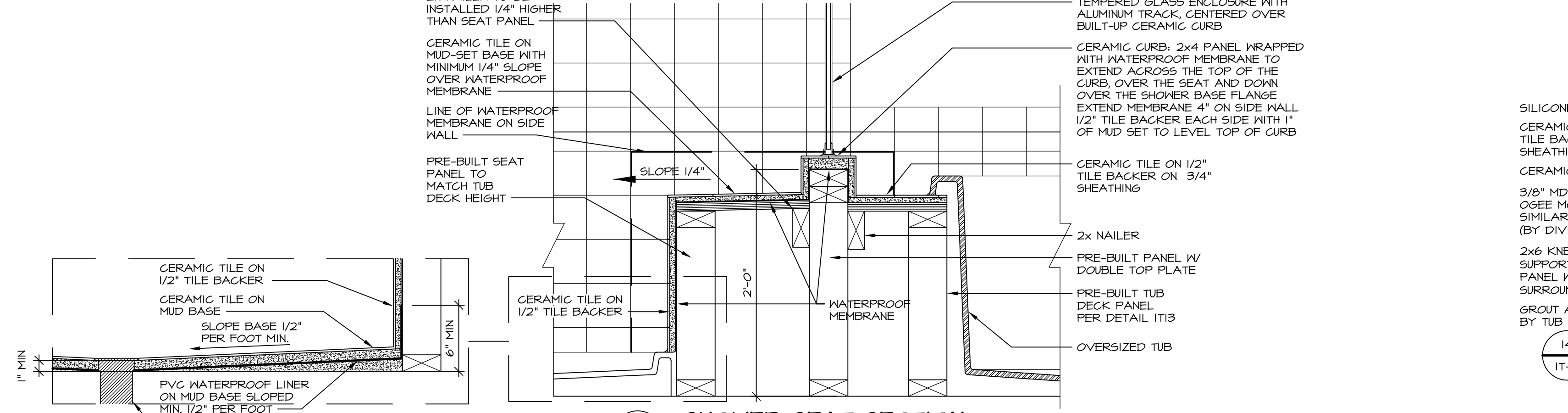
**7 SECTION OF SHOWER SEAT AND SHELF**  
SCALE: 1 1/2" = 1'-0"



**8 SECTION OF SHOWER SEAT**  
SCALE: 1-1/2" = 1'-0" FIBERGLASS SHOWER BASE



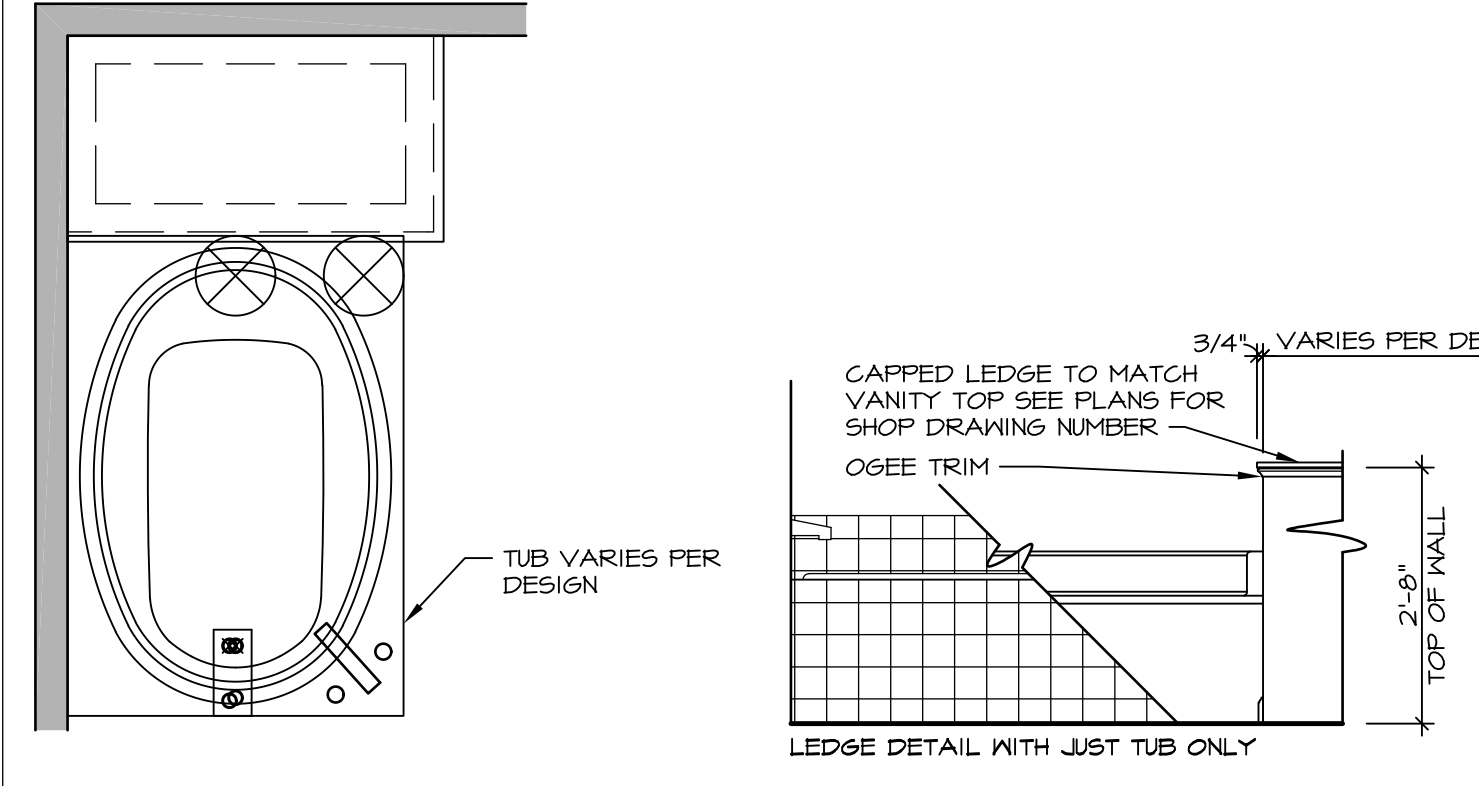
**9 SHOWER SEAT PLAN / DETAIL**  
SCALE: 1/2" = 1'-0"



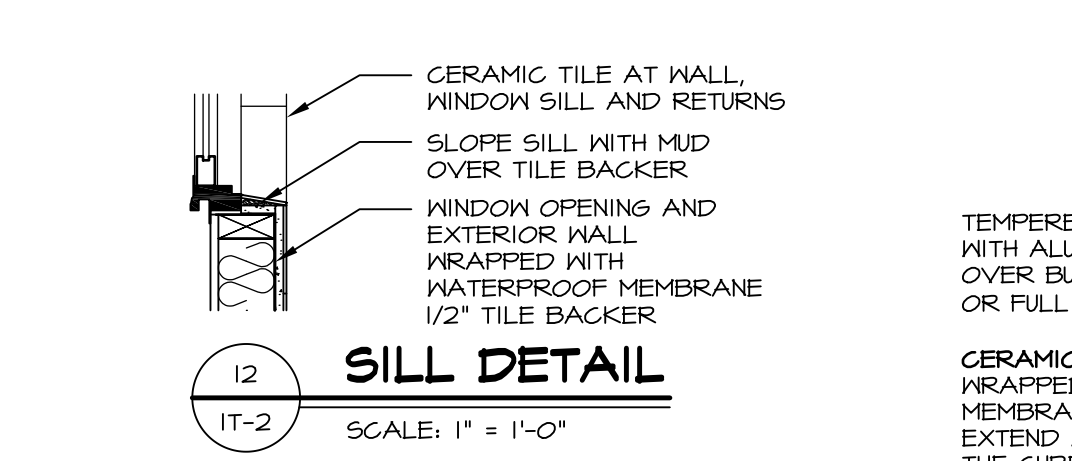
**10 SHOWER SEAT SECTION**  
SCALE: 1-1/2" = 1'-0"



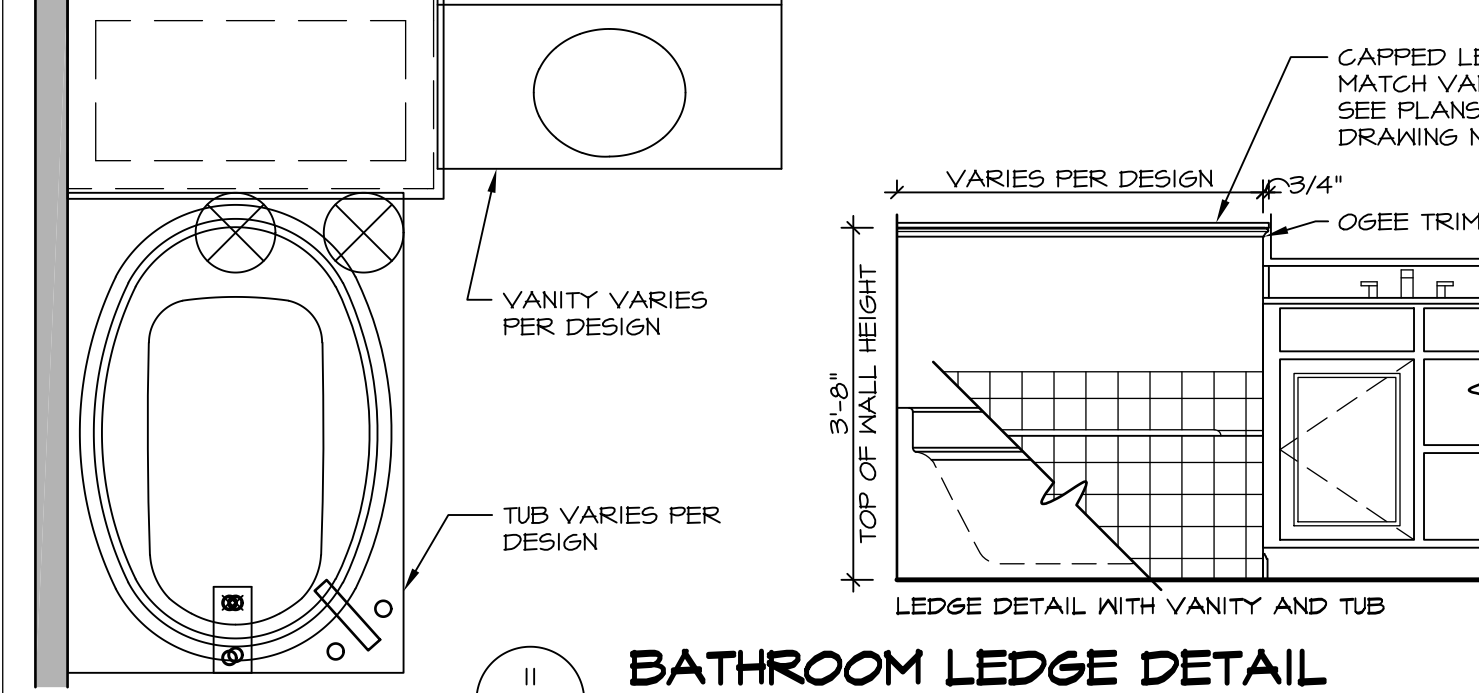
**11 ALTERNATE SHOWER PAN DETAIL**



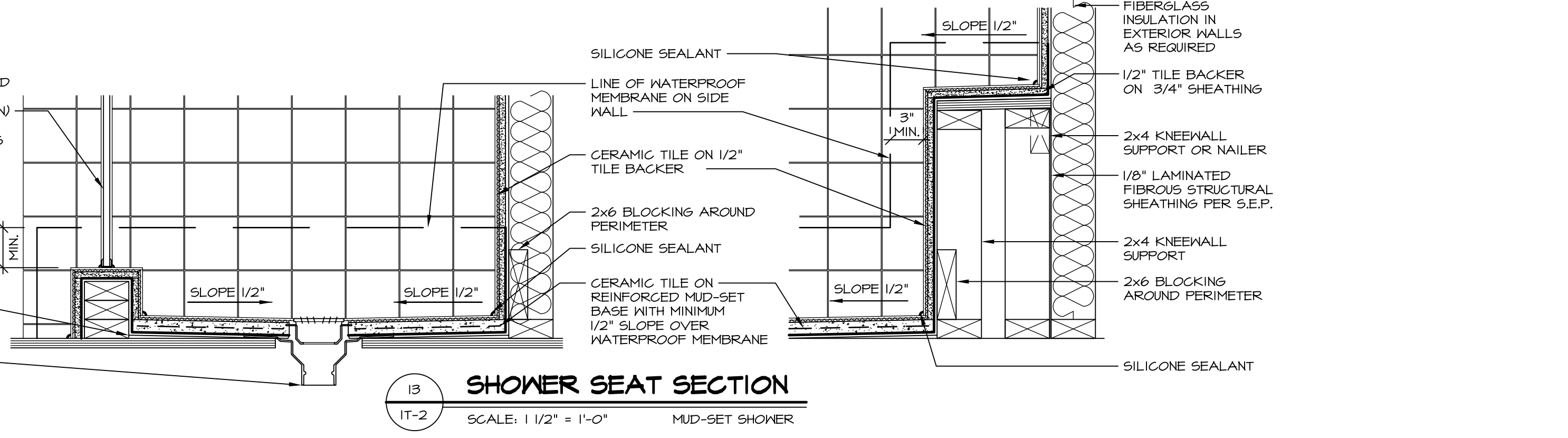
**12 BATHROOM LEDGE DETAIL**  
SCALE: 1/2" = 1'-0"



**13 SILL DETAIL**  
SCALE: 1" = 1'-0"



**14 BATHROOM LEDGE DETAIL**  
SCALE: 1/2" = 1'-0"

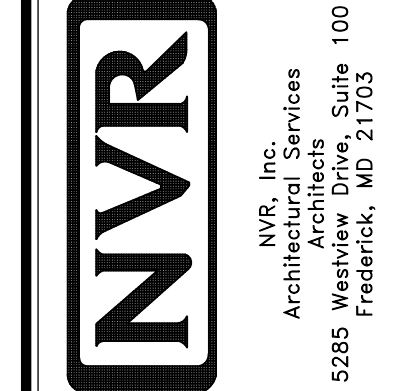


**13 SHOWER SEAT SECTION**  
SCALE: 1 1/2" = 1'-0" MUD-SET SHOWER

REVISIONS

REV. NO.	DATE	DESCRIPTION
1	5/1/17	EBP - REVISED DETAIL 1 AND 11 TO REMOVE TUB ACCESS PANEL REF. (DSS #15 541/4)
2	9/2/17	EBP - REVISED T-FLY NOTE TO CALL OUT LFS
3	9/2/17	EBP - REVISED NOTE ON DETAIL #1 - REVISED ORDER OF MATERIAL PARA#493/4

NVR, Inc., owner, expressly reserves its common law copyright and other property rights in these plans. These plans are not to be reproduced, stored in a retrieval system, or transmitted in any form or by any means, electronic, mechanical, photocopying, recording, or by any information storage and retrieval system, without the prior written consent of NVR, Inc.



SET NO. NVR

MODEL STANDARD DETAILS

DRAWING TITLE INTERIOR TRIM DETAILS

BATH DETAILS

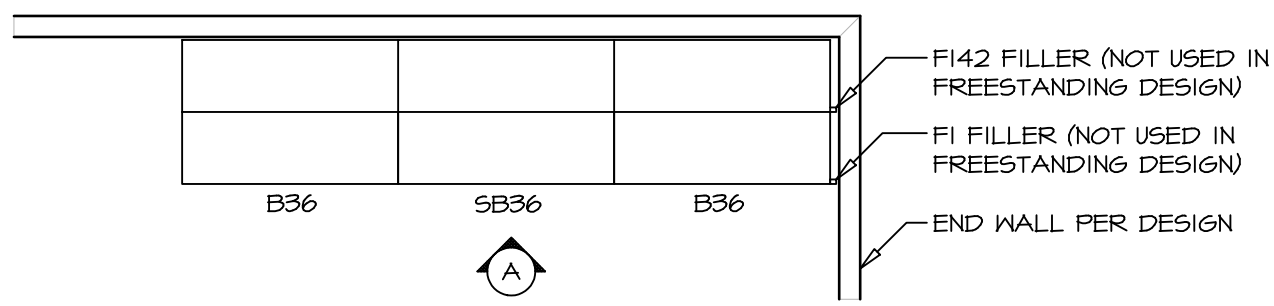
OPTION DESCRIPTION

SHEET NO. IT-2

J:\Dwg\NVR\Interior Trim\IT2.dwg 09/27/17 - 9:20 am

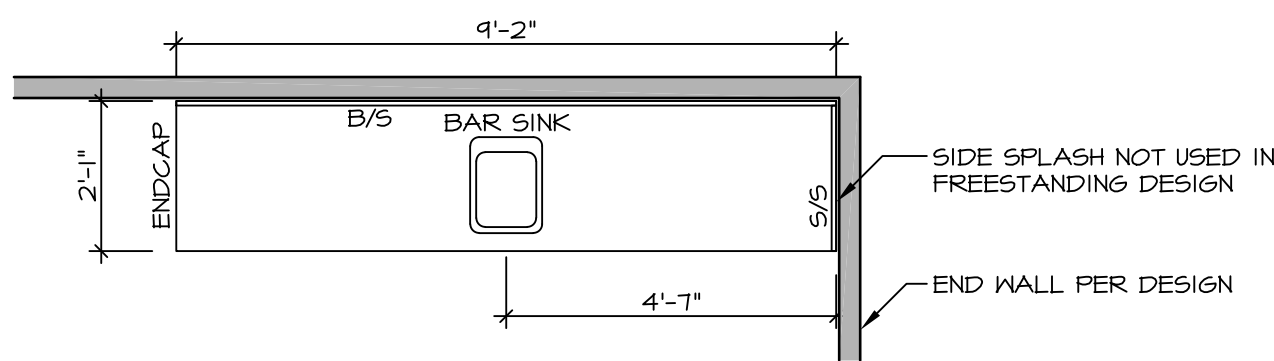


NOTE:  
REVIEW HOUSE SPECIFIC  
PLANS FOR LOCATION  
AND HANDING



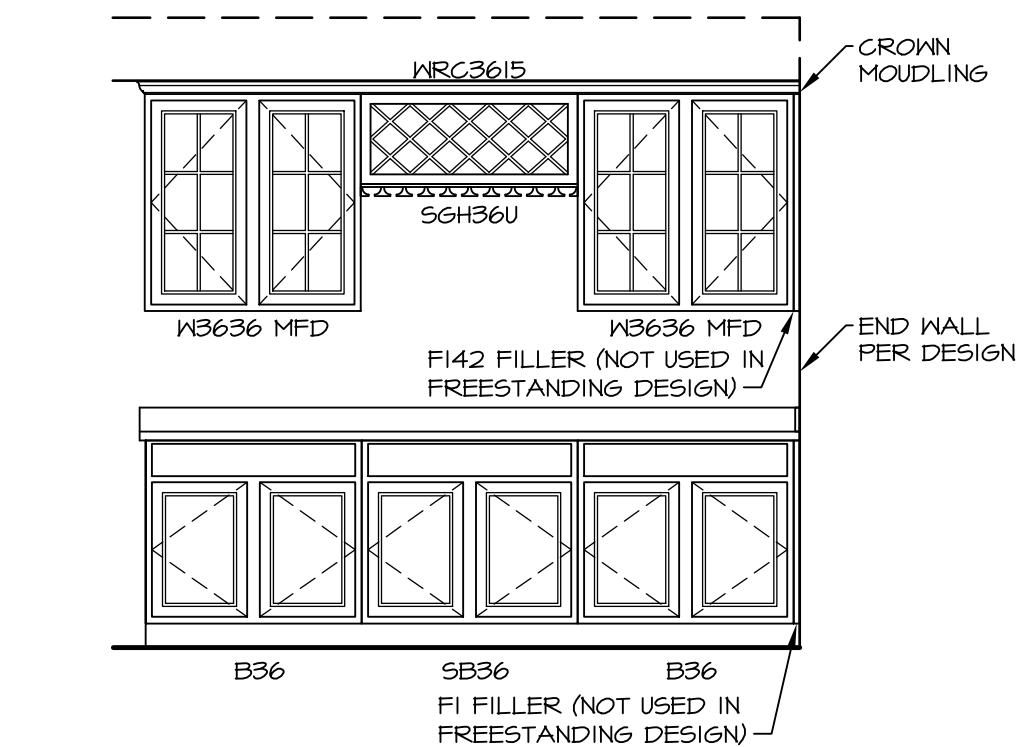
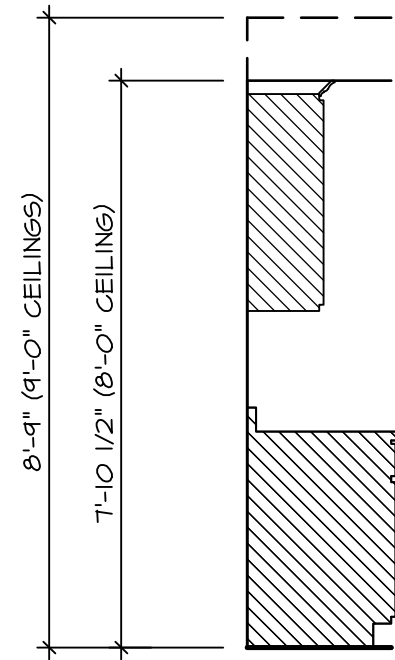
**KITCHEN CABINET  
PLAN KC - 1900**

2  
IT-3b SCALE: 3/8" = 1'-0"



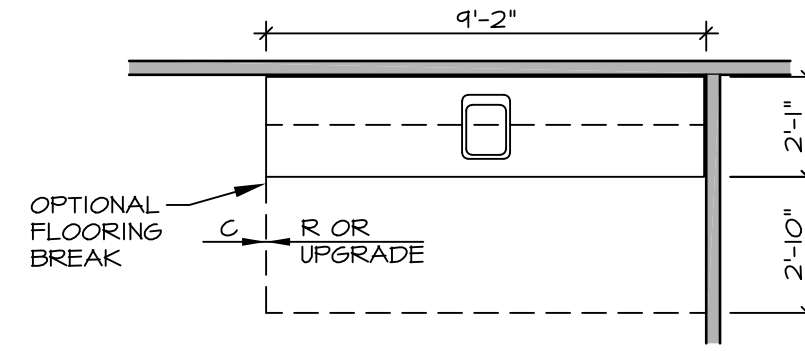
**KITCHEN COUNTERTOP  
PLAN KT - 1900**

6  
IT-3b SCALE: 3/8" = 1'-0"



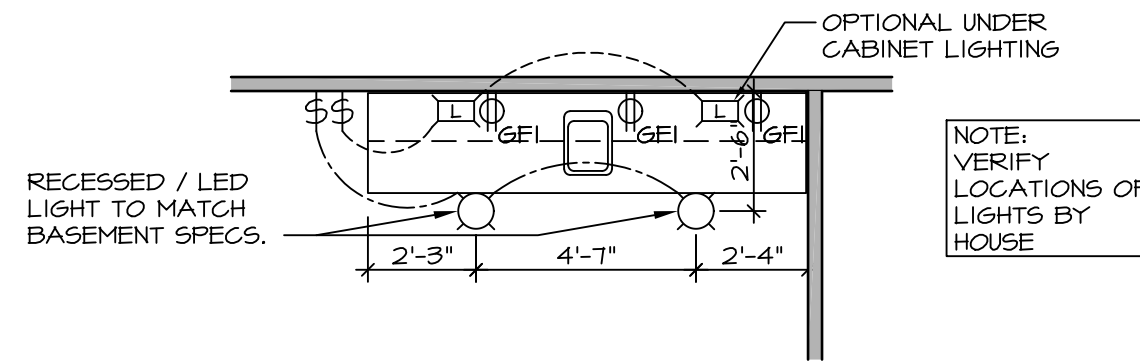
**3 ELEVATION "A"**

IT-3b SCALE: 3/8" = 1'-0"



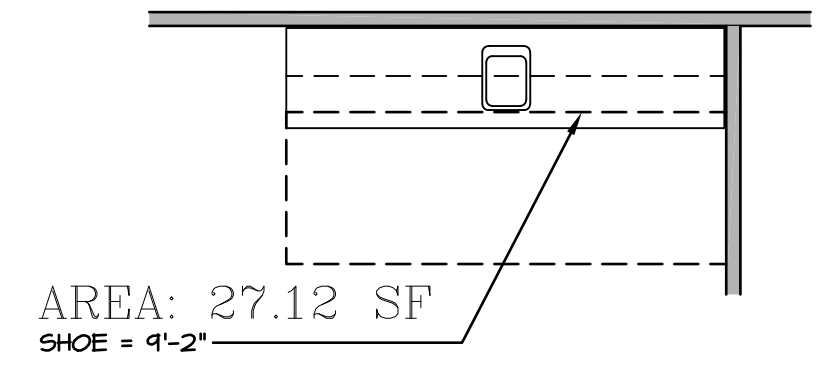
**4 FLOOR PLAN**

IT-3b SCALE: 1/4" = 1'-0"



**7 FLOOR PLAN ELECTRICAL LAYOUT**

IT-3b SCALE: 1/4" = 1'-0"



AREA: 27.12 SF  
SHOE = 4'-2"

**5 FLOORING PLAN**

IT-3b SCALE: 1/4" = 1'-0"

**1 WET BAR DETAILS**

IT-3b SCALE: VARIES \* SHOWN AS END WALL DESIGN

REV. NO.	DATE	REMARKS
1	5/17/17	56A - REVISED FLOOR PLAN DIMENSIONS TO MATCH COUNTERTOP DIMENSIONS
2	5/23/17	56A - REMOVED COUNTERTOP INFORMATION FROM 2/IT-3b
3	6/5/17	56A - REMOVED U.C. REF. AND TURNED OFF FLOORING SPACES
4	9/14/17	EBP - ADDED NOTE TO RECESSED LIGHT / LED LIGHT IN NET BAR

SET NO.	VERSION	DRAWN BY	DATE:	OPTION

**NVR**  
Architectural Services  
5285 West Annapolis Avenue, Suite 100  
Frederick, MD 21703

SHEET NO. <b>IT-3b</b>	MODEL <b>STANDARD DETAILS</b>	SET NO. NVR
DRAWING TITLE <b>INTERIOR TRIM DETAILS</b>	DRAWING TITLE <b>WET BAR DETAILS - BACK BAR (RYAN ONLY)</b>	VERSION
OPTION DESCRIPTION	OPTION DESCRIPTION	DRAWN BY
		DATE:
		OPTION