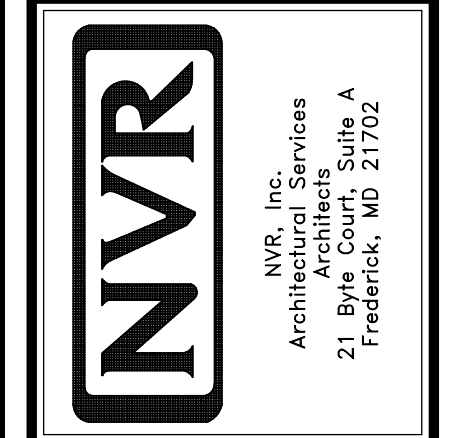
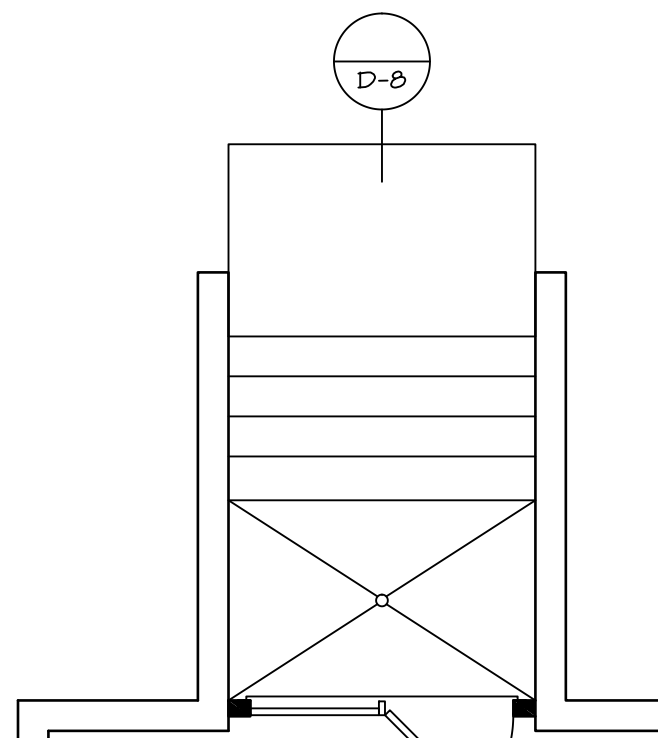


**PLUMBING PLAN**  
SCALE: 1/4" = 1'-0"

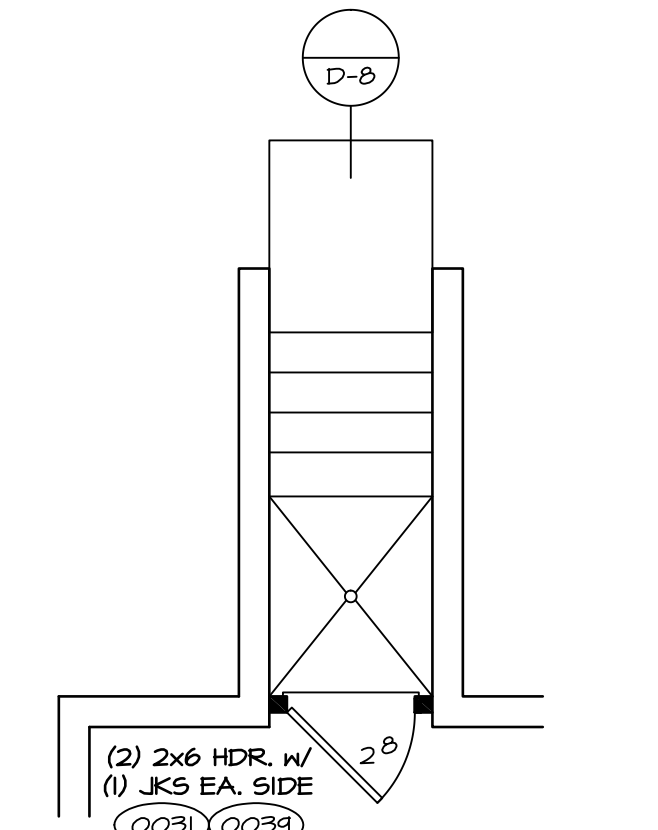
SHEET NO. <b>A-5</b>	MODEL <b>PALERMO</b>	SET NO. <b>PAL00</b> VERSION <b>02</b>	DATE: <b>04/02/12</b>	REVISIONS
OPTION <b>FULL BASEMENT</b>	DRAWING TITLE <b>PLUMBING PLAN</b>	DRAWN BY: <b>RWS</b>	DATE: <b>04/02/12</b>	1 2/24/12 ZDM - PROTOTYPE REVISIONS
<b>40</b>	OPTION DESCRIPTION <b>FULL BASEMENT</b>	DATE: <b>04/02/12</b>	DATE: <b>04/02/12</b>	2 4/2/12 ZDM - CREATED VERSION 01
				3 5/14/12 ELH - TRAP REVISIONS
				4 11/24/12 NGB - CREATED VERSION 02
				5 5/10/13 ELG - ADIT REVISIONS
				6 5/1/14 TES - FRAXIS TUB CONVERSIONS
				7 5/5/14 DSK - WET BAR PROJECT
				8 11/18/14 ELG - SHIFTED 5.5 1/2" TO AVOID COLD AIR RETURN (PAR#23016)
				9 5/22/15 SHK - ADDED DIMENSION FROM REAR HALL TO CONDENSATE LINE PAR 33444



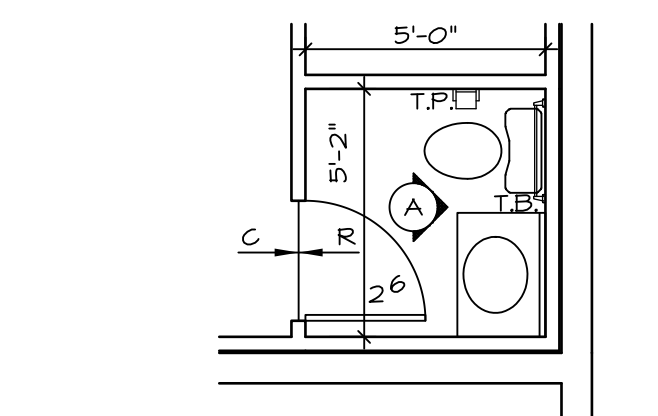
NVR, Inc., owner, expressly reserves its common law copyright and other property rights in these plans. These plans are not to be used, copied, reproduced, or otherwise disseminated without the express written consent of NVR, Inc.



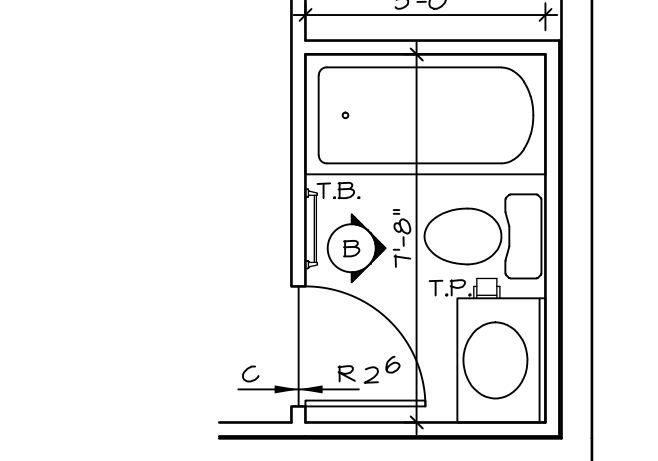
**DBL PATIO DOOR**  
SCALE: 1/4" = 1'-0" "D8C"



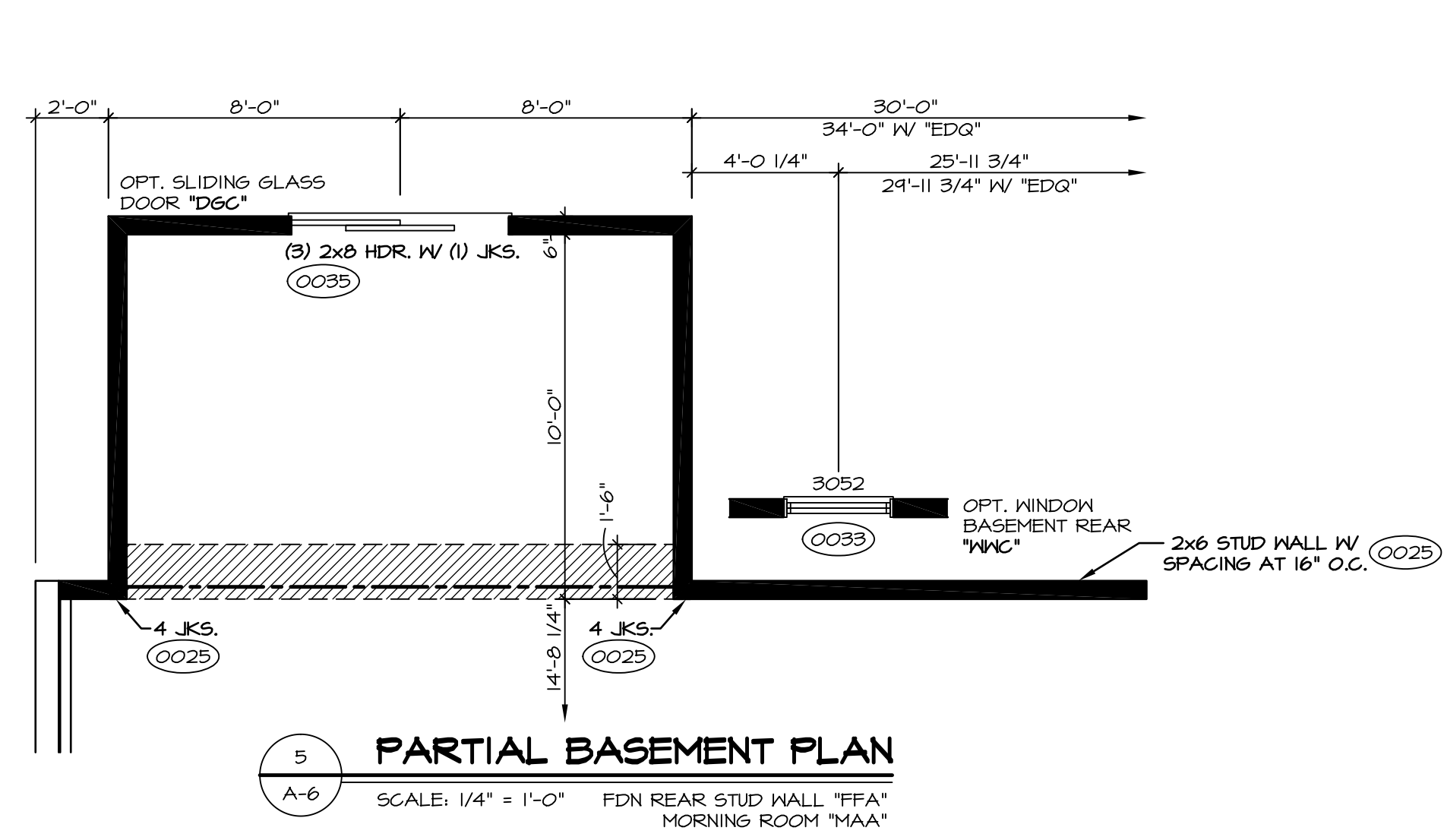
**SINGLE PATIO DOOR**  
SCALE: 1/4" = 1'-0" "D7C"



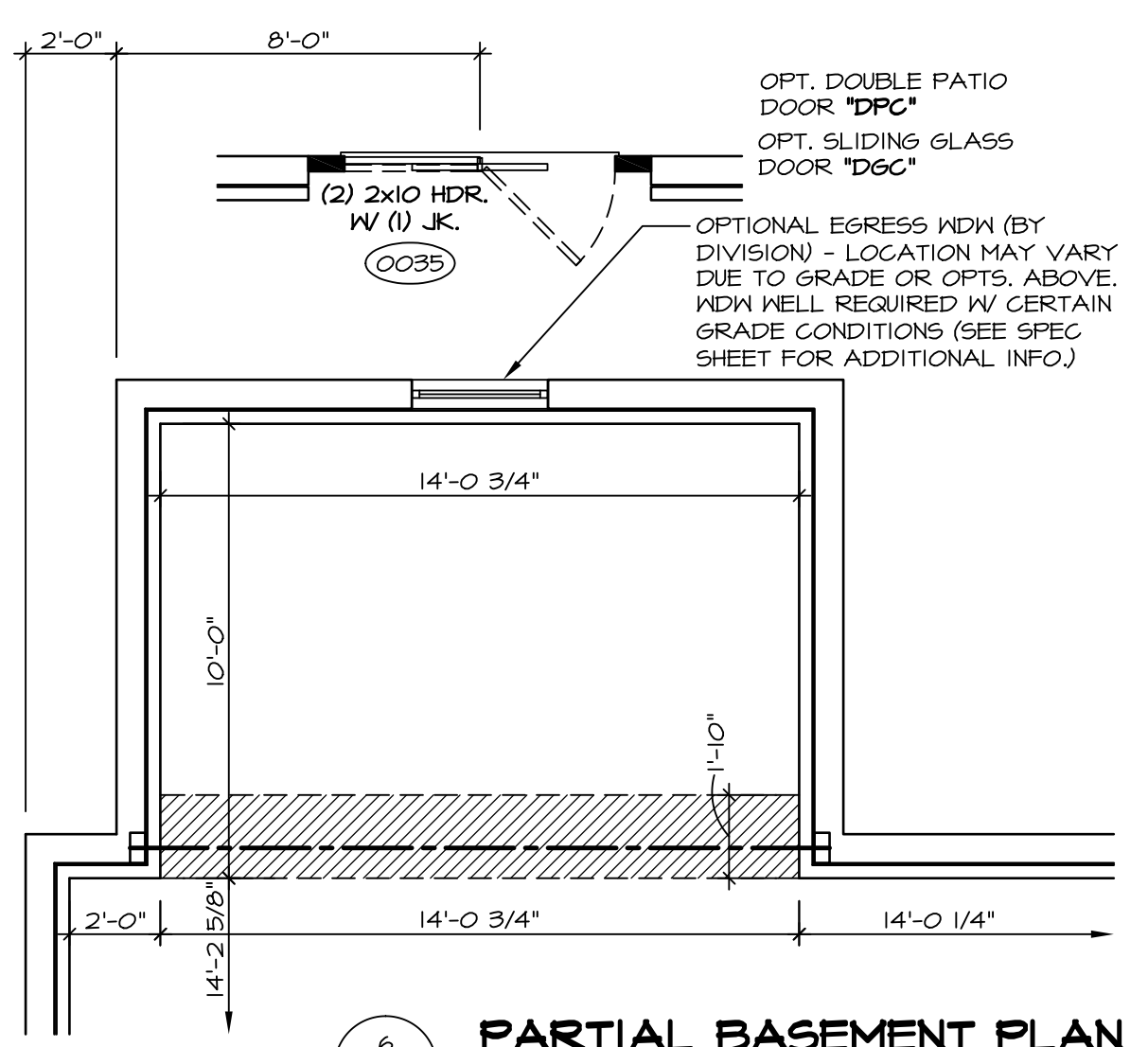
**PARTIAL BSMT PLAN**  
SCALE: 1/4" = 1'-0" "PNDR RM BASEMENT 'APC' "



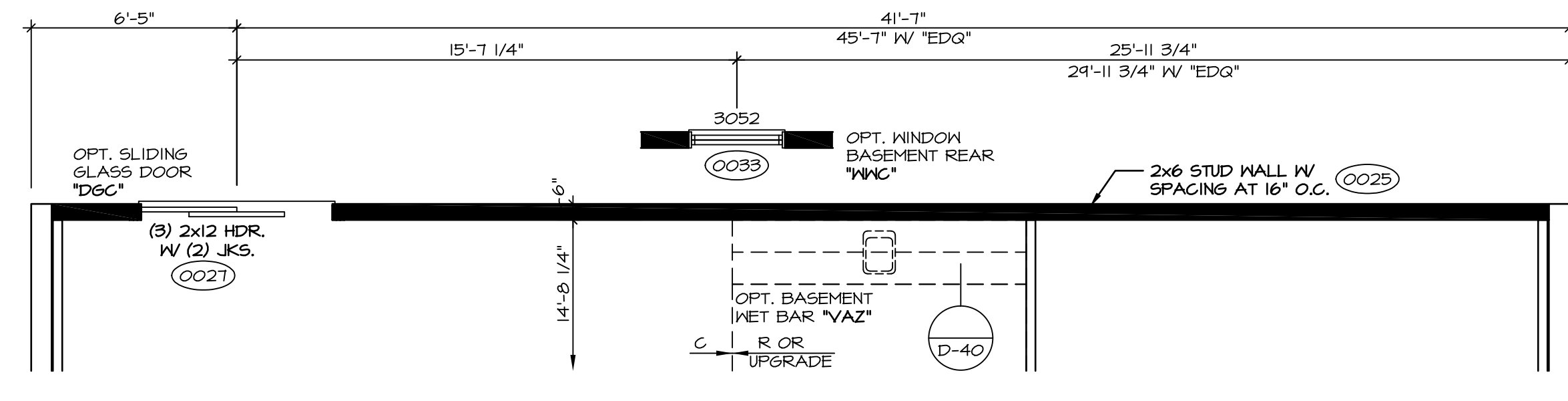
**PARTIAL BSMT PLAN**  
SCALE: 1/4" = 1'-0" "PNDR RM BASEMENT 'APC' "/>



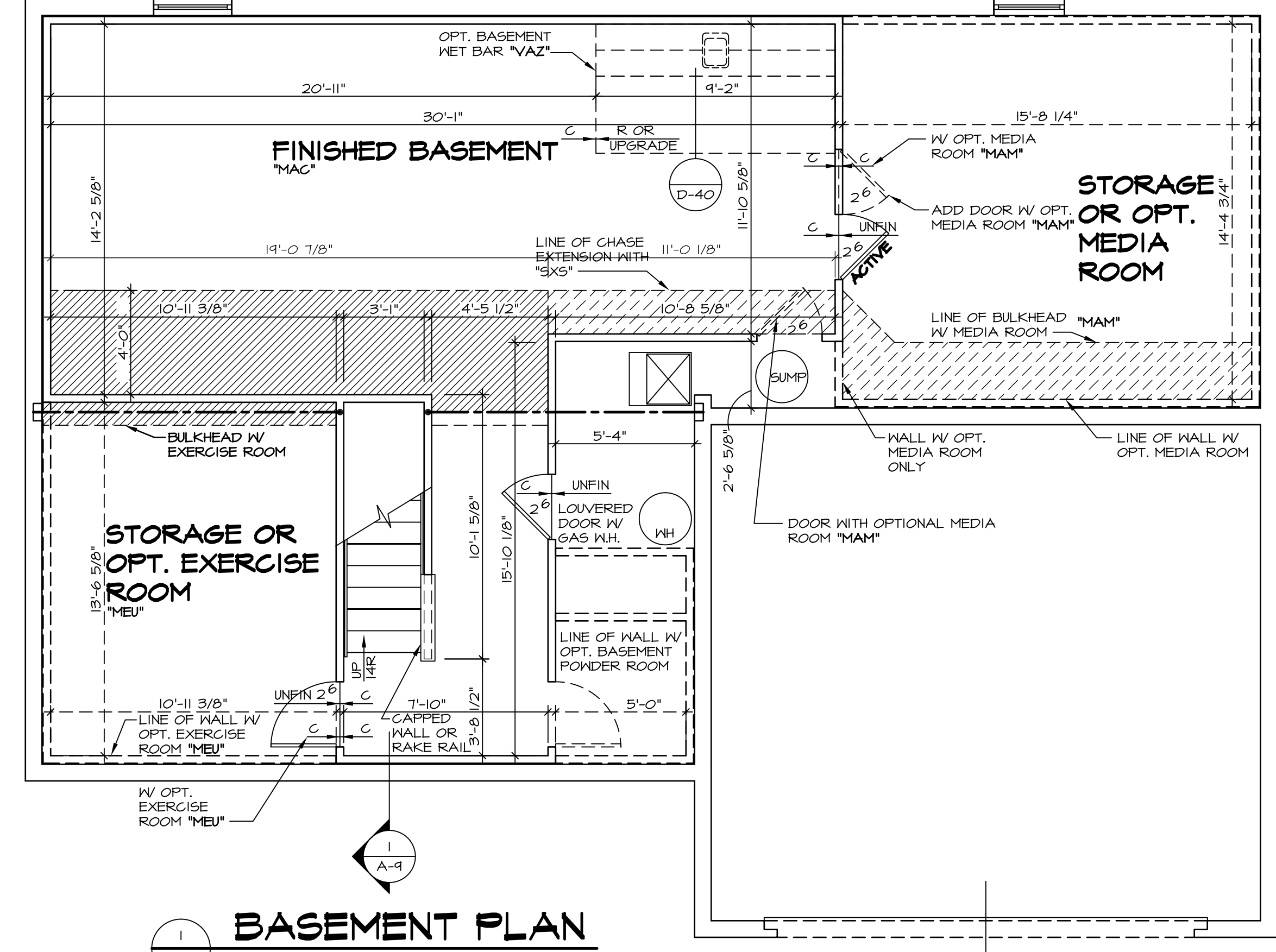
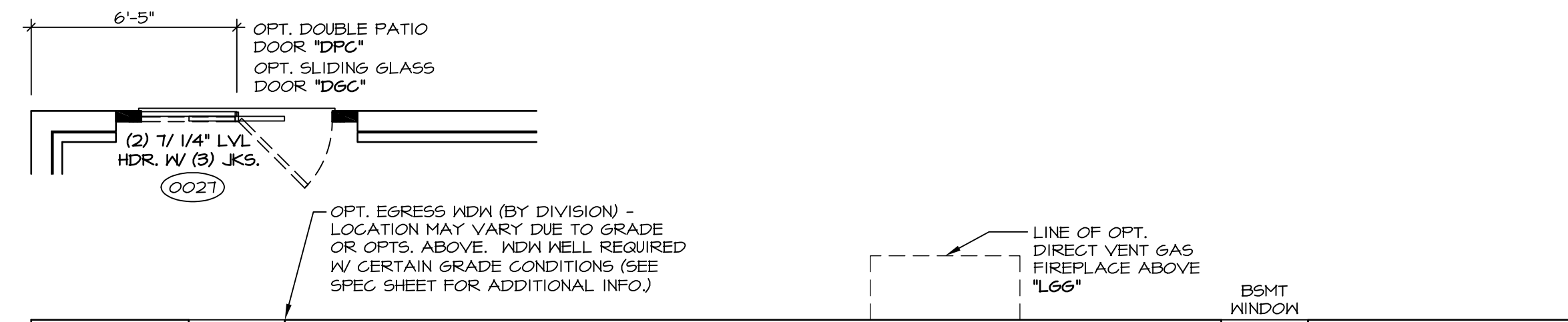
**PARTIAL BASEMENT PLAN**  
SCALE: 1/4" = 1'-0" "FDN REAR STUD WALL 'FFA' "/>



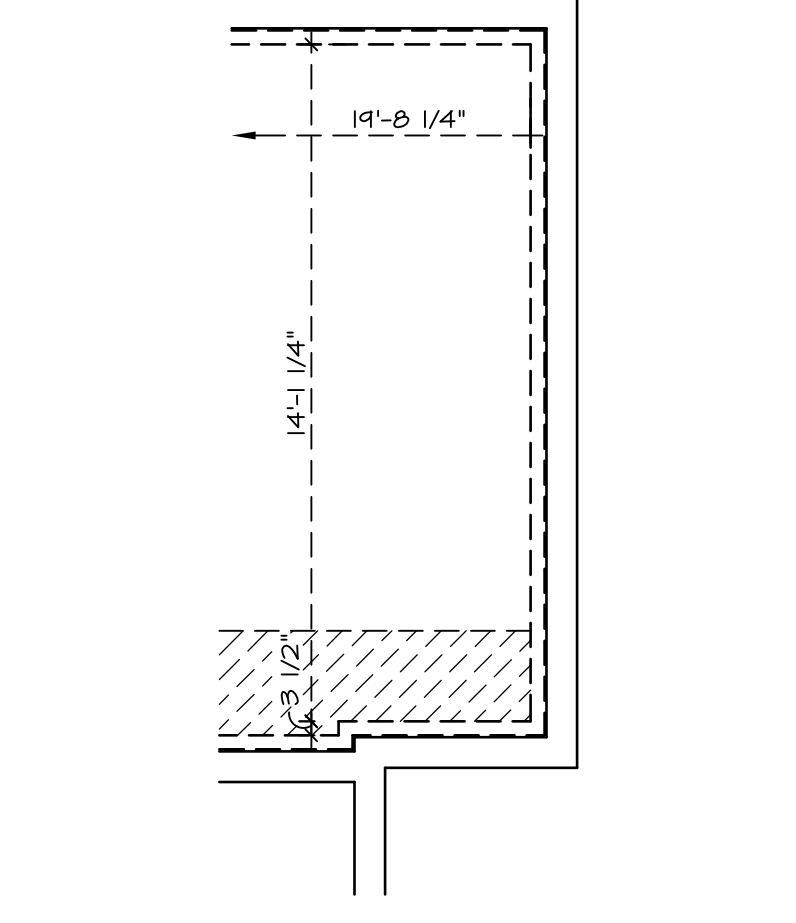
**PARTIAL BASEMENT PLAN**  
SCALE: 1/4" = 1'-0" "MORNING ROOM 'MAA' "



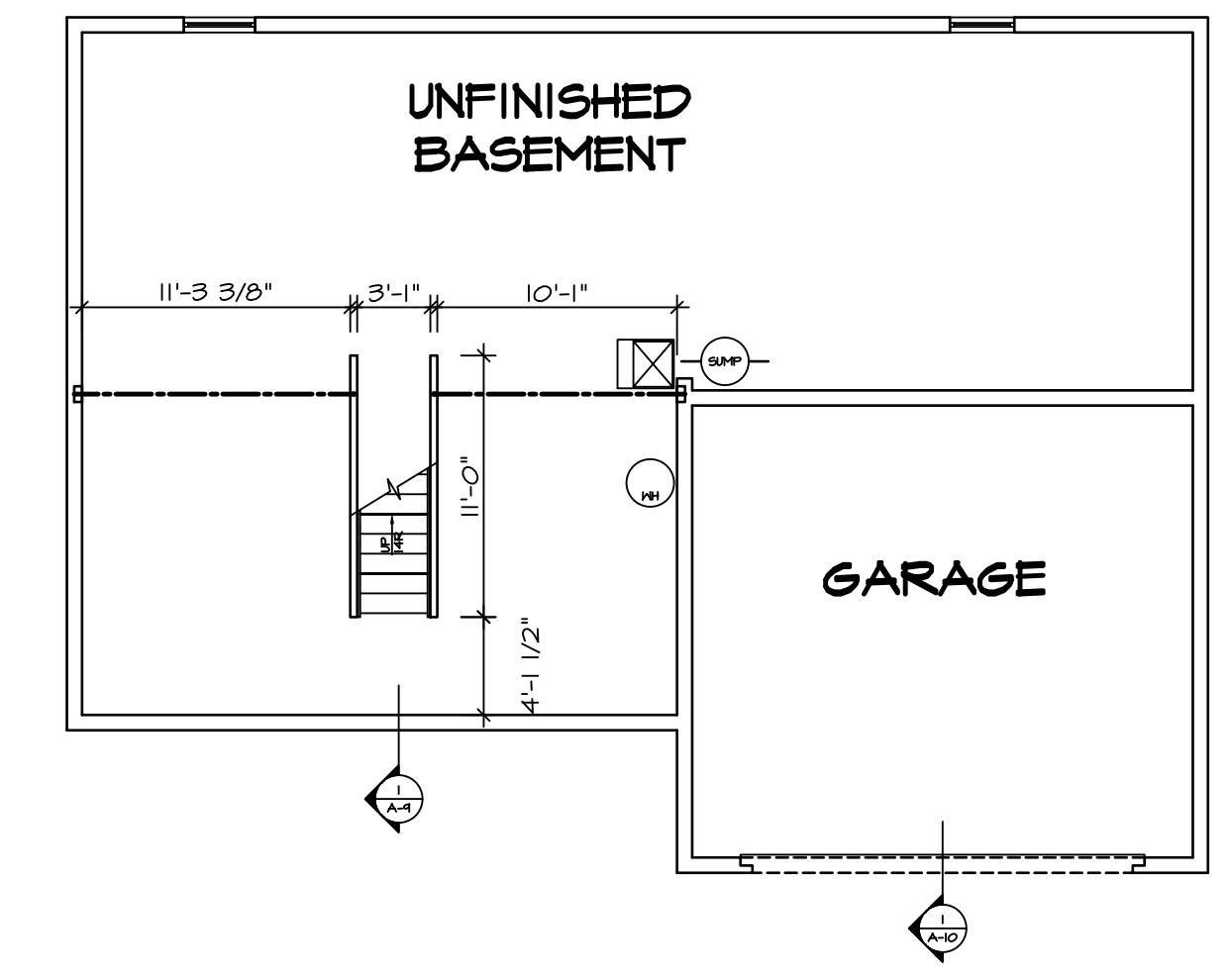
**PARTIAL BASEMENT PLAN**  
SCALE: 1/4" = 1'-0" "FDN REAR STUD WALL 'FFA' "



**BASEMENT PLAN**  
SCALE: 1/4" = 1'-0" "4' EXT. TO HOUSE 'EDG' "/>



**PARTIAL BSMT PLAN**  
SCALE: 1/4" = 1'-0" "4' EXT. TO HOUSE 'EDG' "/>



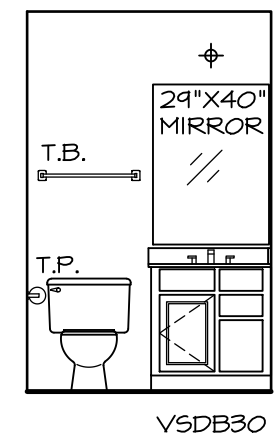
**BASEMENT FLOOR PLAN**  
SCALE: 1/8" = 1'-0" "UNFINISHED BASEMENT 'MEC' "

**STRUCTURAL NOTES:**

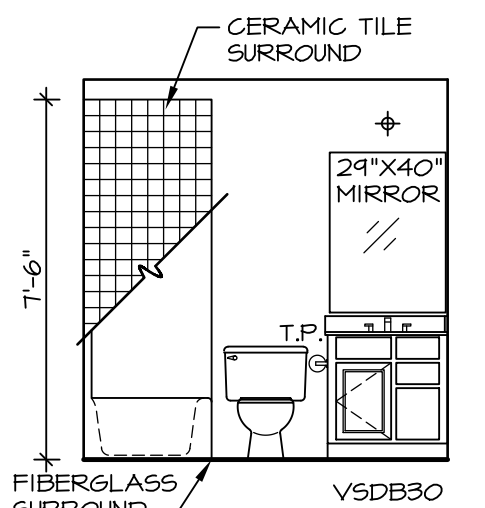
- BEARING WALL
  - NON BEARING WALL
  - X ENGINEERING PAGE NUMBER
  - ⊗ INDICATES BEARINGS FROM POINT-LOAD ABOVE
1. ALL HEADERS ARE (2) 2x6 W/ 2x4 WALLS OR (3) 2x6 W/ 2x6 WALLS, UNLESS OTHERWISE NOTED.
  2. ALL HEADERS TO HAVE (1) 2x4 OR 2x6 JACK EACH END, UNLESS OTHERWISE NOTED.
  3. ALL EXTERIOR WALLS TO BE 4" AND ALL INTERIOR WALLS TO BE 3 1/2", UNLESS OTHERWISE NOTED.
  4. HATCHED AREAS INDICATE DROPPED CEILINGS.
  5. SEE "BRACED WALL PANEL DETAIL SHEET" FOR SPECIAL WALL FRAMING LOCATIONS AND HEADER SIZES, IF APPLICABLE.

**NOTES:**

1. TEMPERED GLASS SHOWER ENCLOSURE WITH SWING DOOR OR OPTIONAL SLIDING DOOR BY DIVISION
2. TUB ACCESS PANELS PROVIDED AS NEEDED, ALL MATERIALS BY DIVISION
3. REFER TO SHEET D-10 FOR TUB AND SHOWER DETAILS.

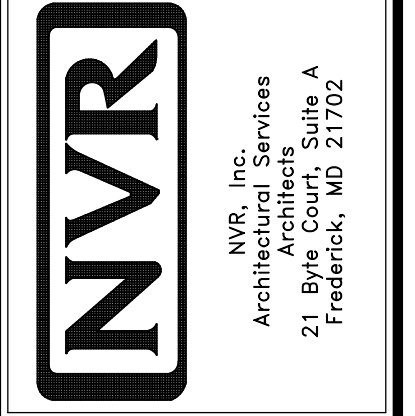


**BASEMENT POWDER ROOM**  
SCALE: 1/4" = 1'-0" "APC"



**BASEMENT POWDER ROOM WITH BATHTUB**  
SCALE: 1/4" = 1'-0" "APC" "AFD"

REV. NO.	DATE	REMARKS
10	5/7/14	TES - FRAXIS TUB CONVERSIONS
11	5/5/14	DPK - NET BAR PROJECT
12	8/15/16	DLR - ADDED UNFINISHED BASEMENT FLOOR PLAN OPT. "MEC" (PAR 4114)
4	9/11/12	ELH - TRIM AUDIT
5	11/29/12	NGB - CREATED BATH TILE HEIGHTS
6	4/23/13	SAH - REVISED BATH TILE HEIGHTS
7	5/16/13	ELK - AUDIT REVISIONS
8	11/14/13	CLJ - ADDED NOTE OR BAKE RAIL AT CARPETED WALL (PAR ID: 20442)
9	4/22/14	ABS - REVISED BULKHEAD SIZE FOR HVAC CHANGE (PAR: 425267)



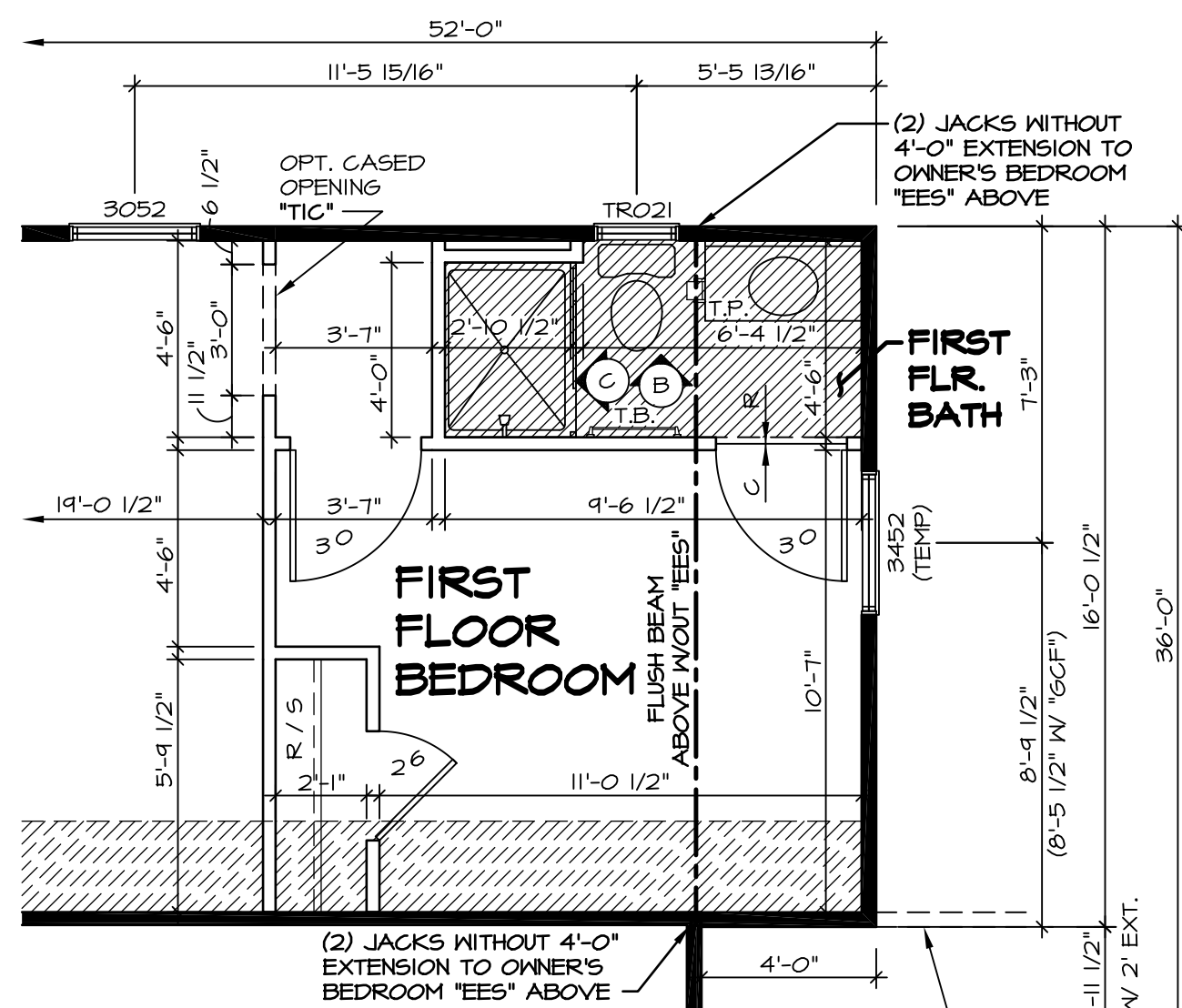
MODEL	SET NO.	VERSION	DRAWN BY	DATE	OPTION
PALERMO	02	02	ZDM	04/02/12	MAC

**DRAWING TITLE**  
BASEMENT FLOOR PLAN

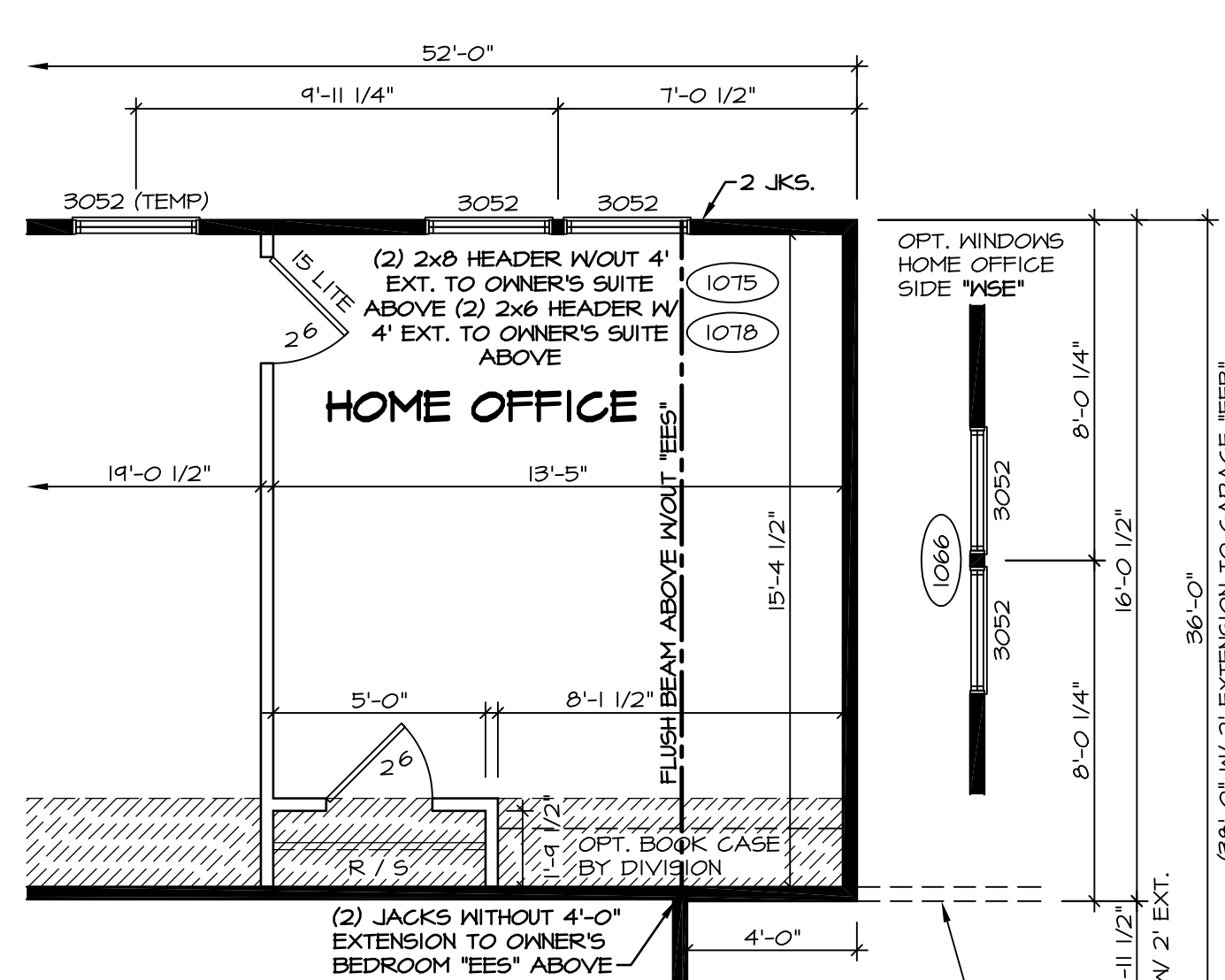
**OPTION DESCRIPTION**  
FINISHED BASEMENT

**SHEET NO.**  
A-6

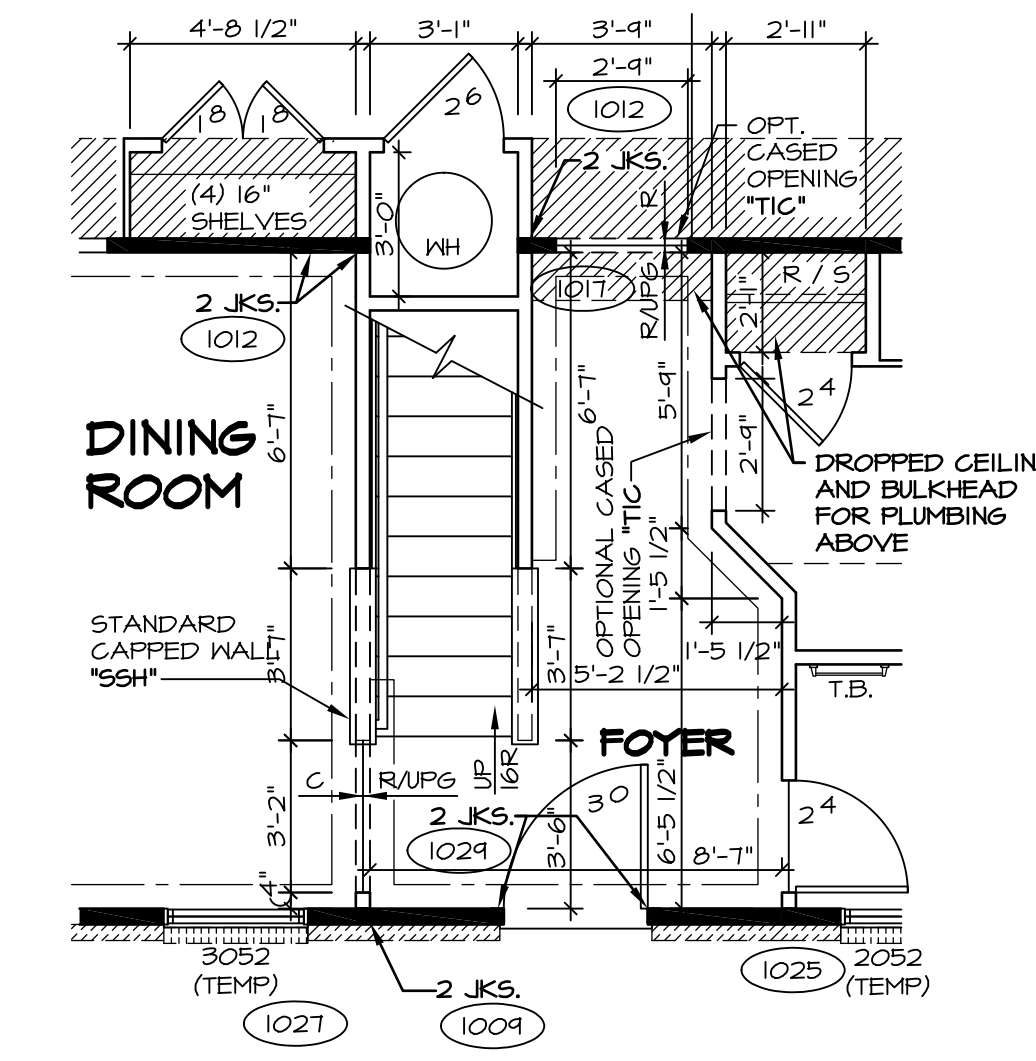
**43**



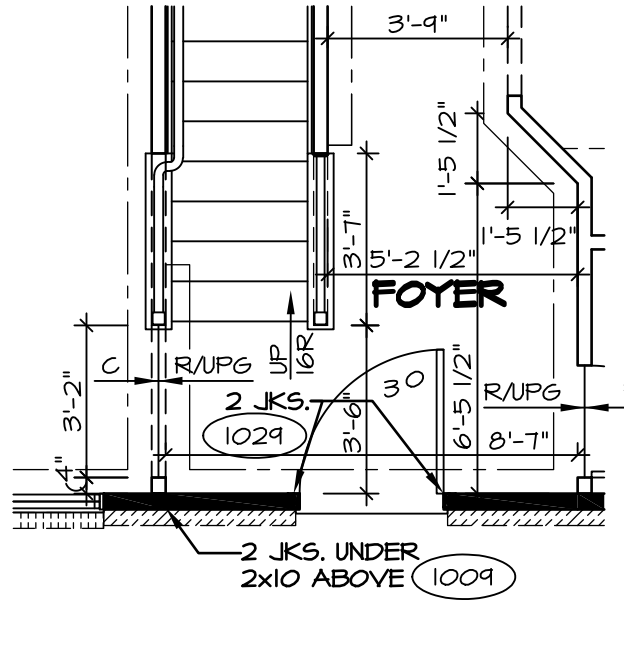
**3 PARTIAL FIRST FLOOR PLAN**  
SCALE: 1/4" = 1'-0"  
FIRST FLOOR BEDROOM "BAR"  
LINE OF OPTIONAL 3 CAR FRONT ENTRY GARAGE "GCF" (SEE A-7C FOR MORE INFORMATION)



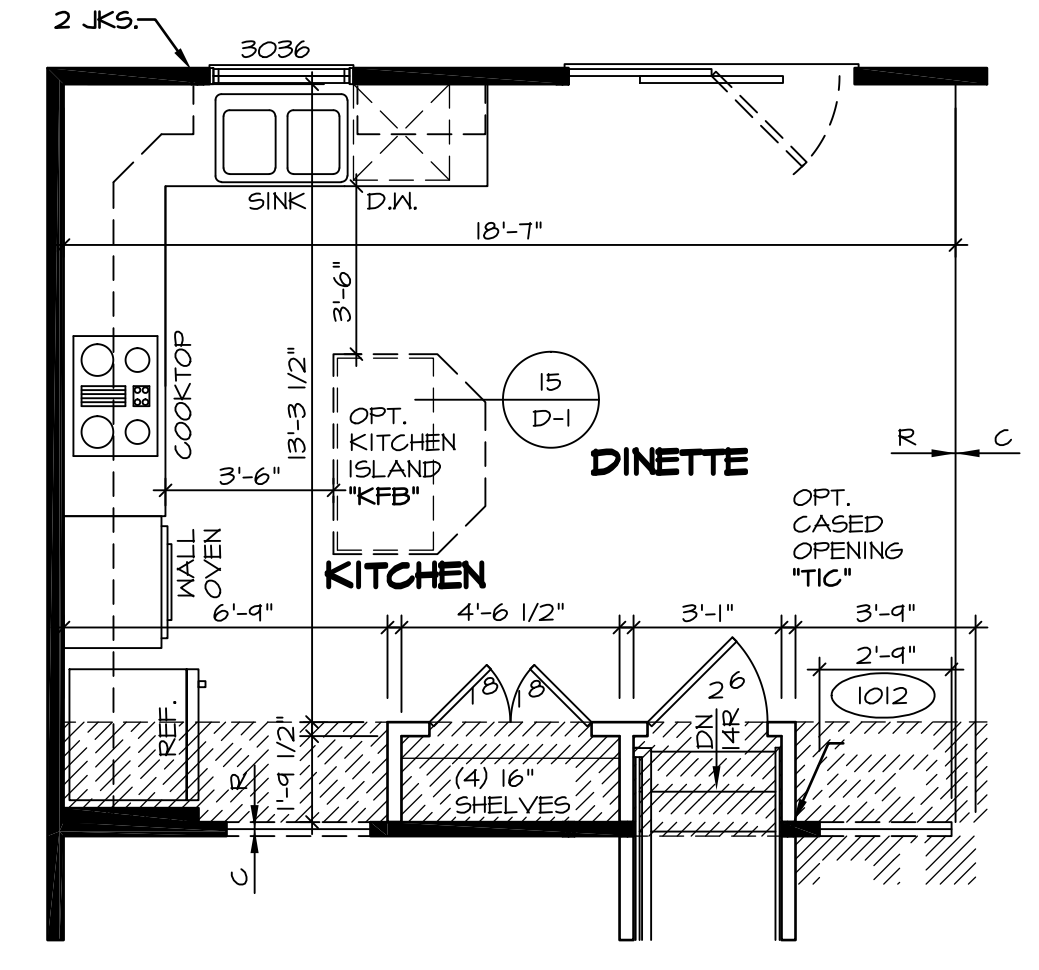
**4 PARTIAL FIRST FLOOR PLAN**  
SCALE: 1/4" = 1'-0"  
HOME OFFICE "MAP"  
LINE OF OPTIONAL 3 CAR FRONT ENTRY GARAGE "GCF" (SEE A-7C FOR MORE INFORMATION)



**5 PARTIAL FIRST FLOOR PLAN**  
SCALE: 1/4" = 1'-0"  
CRAWL FOUNDATION "FCA"  
SLAB FOUNDATION "FSA"

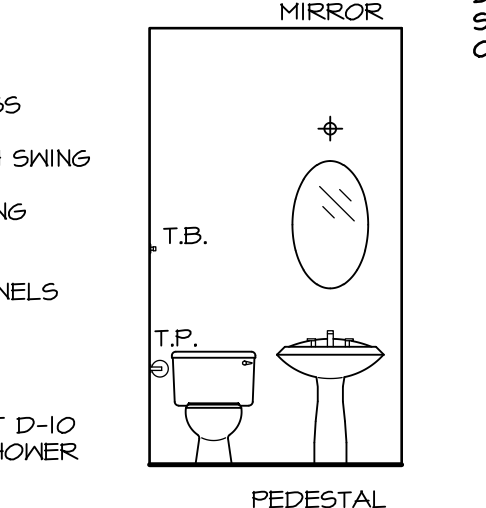


**6 PARTIAL FIRST FLOOR PLAN**  
SCALE: 1/4" = 1'-0"  
ALTERNATE RAIL LAYOUT "S56", "S56S", "S57", "S57S"

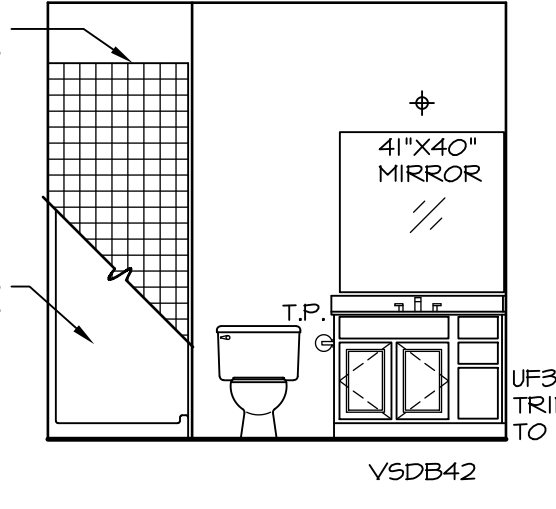


**7 PARTIAL FIRST FLOOR PLAN**  
SCALE: 1/4" = 1'-0"  
UPGRADE KITCHEN "KAE"  
UPGRADE KITCHEN "KAF"

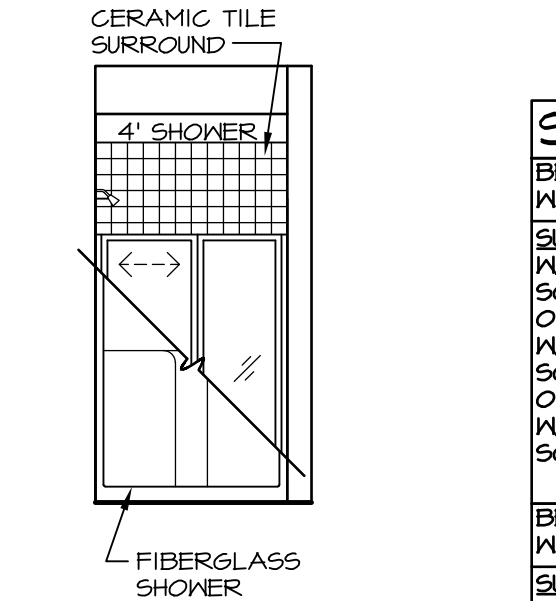
**NOTES:**  
TEMPERED GLASS SHOWER ENCLOSURE WITH SWING DOOR OR OPTIONAL SLIDING DOOR BY DIVISION. TUB ACCESS PANELS PROVIDED AS NEEDED, ALL MATERIALS BY DIVISION. REFER TO SHEET D-10 FOR TUB AND SHOWER DETAILS.



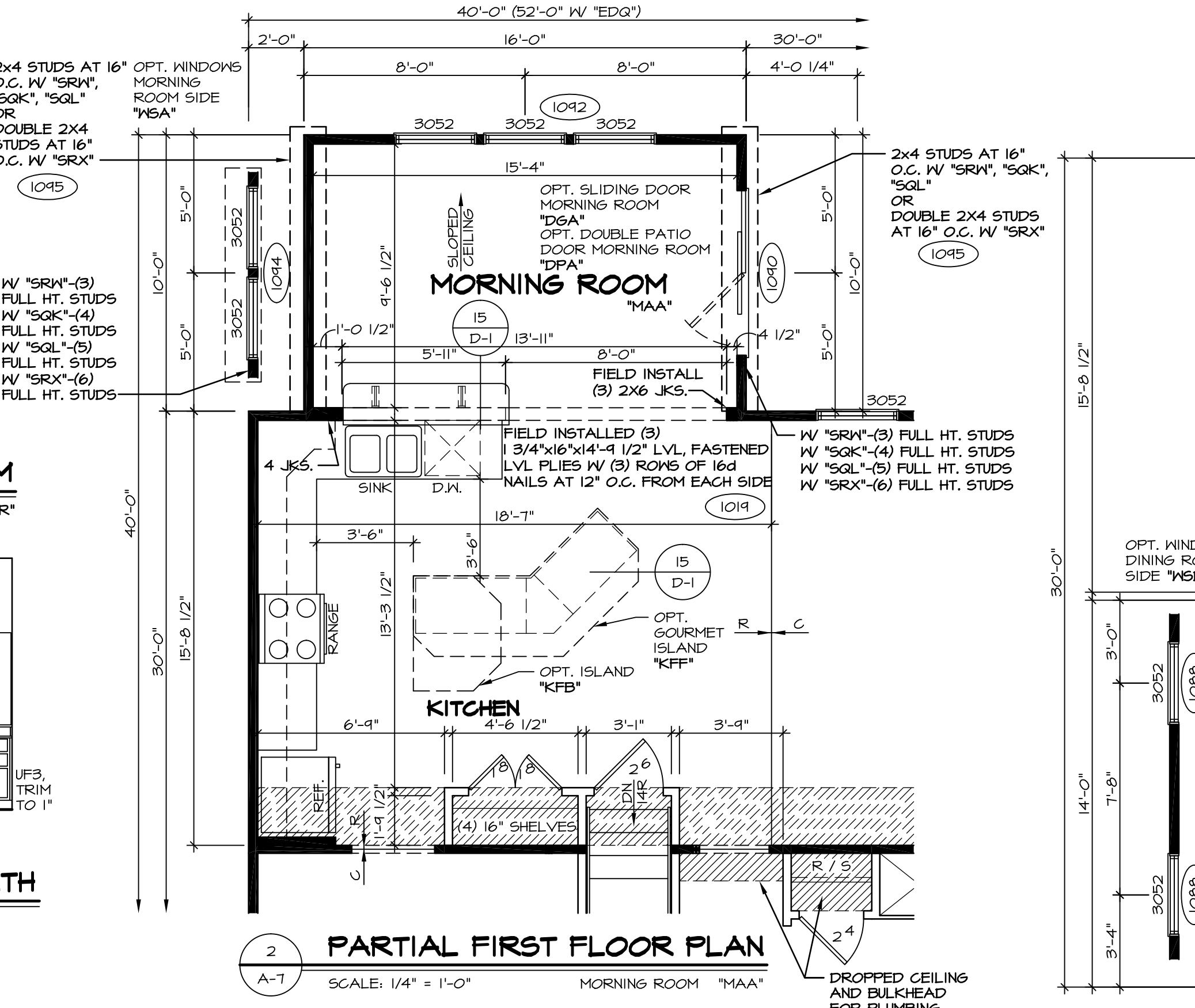
**A POWDER ROOM**  
SCALE: 1/4" = 1'-0"  
"BAR"



**B FIRST FLOOR BATH**  
SCALE: 1/4" = 1'-0"



**C FIRST FLOOR BATH**  
SCALE: 1/4" = 1'-0"

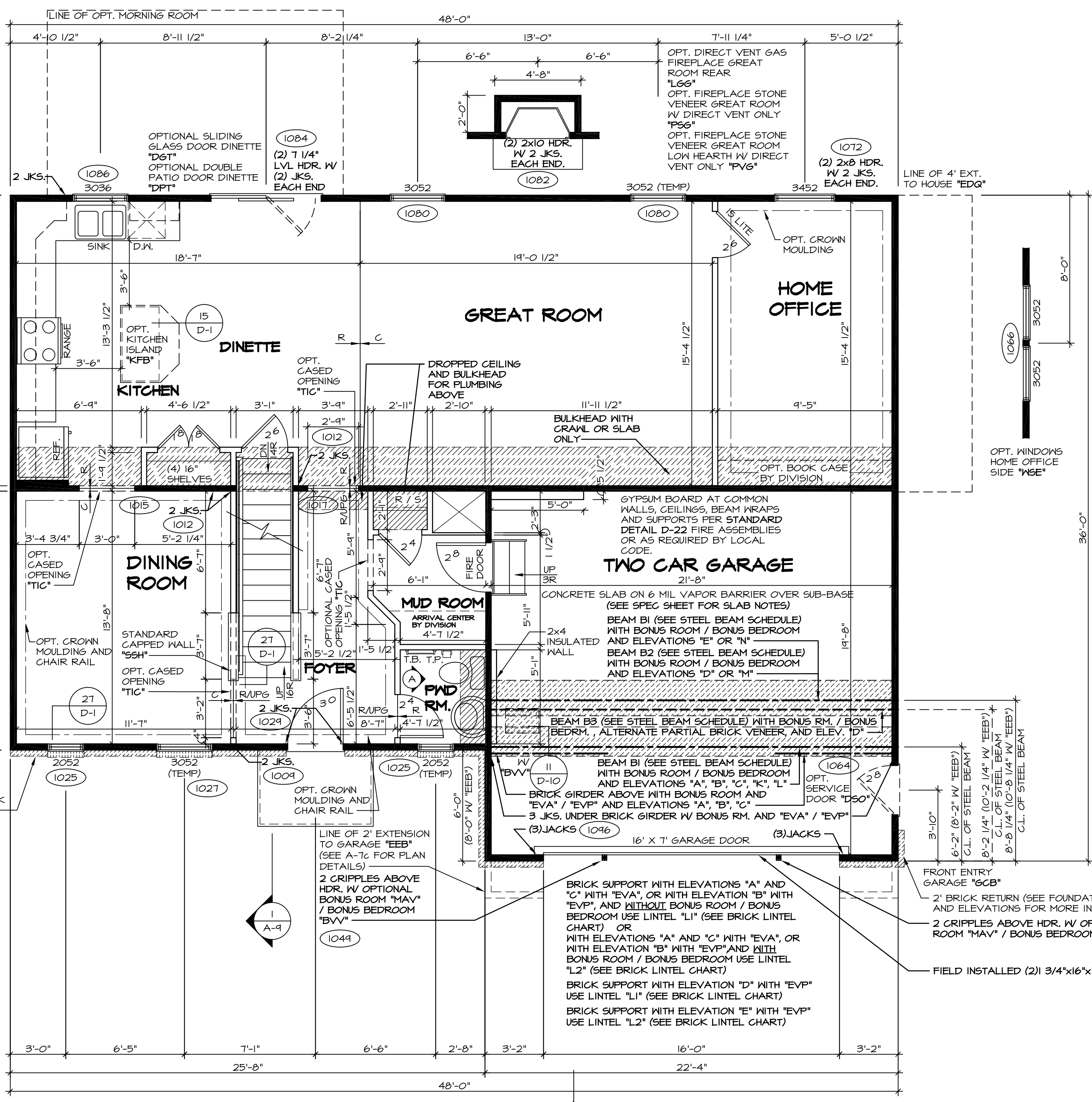


**2 PARTIAL FIRST FLOOR PLAN**  
SCALE: 1/4" = 1'-0"  
MORNING ROOM "MAA"

STEEL BEAM SCHEDULE		
BEAM B1: W12x40x22-3 1/2" STEEL BEAM (1057) (1133)	BEAM B1: W12x40x22-3 1/2" STEEL BEAM (1161)	
SUPPORT AT LEFT: W/ "FBA" - 3"x8"-10 5/8" SCHEDULE 40 STEEL COLUMN OR W/ "FCA" - 3"x8"-11 1/8" SCHEDULE 40 STEEL COLUMN OR W/ "FSA" - 3"x8"-11 5/8" SCHEDULE 40 STEEL COLUMN	SUPPORT AT RIGHT: W/ "FBA" - 3"x8"-10 5/8" SCHEDULE 40 STEEL COLUMN OR W/ "FCA" - 3"x8"-11 1/8" SCHEDULE 40 STEEL COLUMN OR W/ "FSA" - 3"x8"-11 5/8" SCHEDULE 40 STEEL COLUMN	SUPPORT AT RIGHT: W/ "FBA" - 3"x8"-10 5/8" SCHEDULE 40 STEEL COLUMN OR W/ "FCA" - 3"x8"-11 1/8" SCHEDULE 40 STEEL COLUMN OR W/ "FSA" - 3"x8"-11 5/8" SCHEDULE 40 STEEL COLUMN
BEAM B3: W12x35x22-3 1/2" STEEL BEAM (1128)	BEAM B3: W12x35x22-3 1/2" STEEL BEAM (1165)	
SUPPORT AT LEFT: W/ "FBA" - 3"x8"-10 5/8" SCHEDULE 40 STEEL COLUMN OR W/ "FCA" - 3"x8"-10 5/8" SCHEDULE 40 STEEL COLUMN OR W/ "FSA" - 3"x8"-11 1/8" SCHEDULE 40 STEEL COLUMN	SUPPORT AT RIGHT: W/ "FBA" - 3"x8"-10 5/8" SCHEDULE 40 STEEL COLUMN OR W/ "FCA" - 3"x8"-11 1/8" SCHEDULE 40 STEEL COLUMN OR W/ "FSA" - 3"x8"-11 5/8" SCHEDULE 40 STEEL COLUMN	SUPPORT AT RIGHT: W/ "FBA" - 3"x8"-10 5/8" SCHEDULE 40 STEEL COLUMN OR W/ "FCA" - 3"x8"-11 1/8" SCHEDULE 40 STEEL COLUMN OR W/ "FSA" - 3"x8"-11 5/8" SCHEDULE 40 STEEL COLUMN
BEAM B4: W12x26x22-3 1/2" STEEL BEAM (1171) (1173) (1175)		
SUPPORT AT LEFT: (3)2x4 JACKS	SUPPORT AT RIGHT: (3)2x6 CRIPPLES	

- STRUCTURAL NOTES:**
- BEARING WALL
  - NON BEARING WALL
  - ENGINEERING PAGE NUMBER
  - INDICATES BEARING FROM POINT-LOAD ABOVE
- ALL HEADERS ARE (2) 2x6 W/ 2x4 WALLS OR (3) 2x6 W/ 2x6 WALLS, UNLESS OTHERWISE NOTED.
  - ALL HEADERS TO HAVE (1) 2x4 OR 2x6 JACK EACH END, UNLESS OTHERWISE NOTED.
  - ALL EXTERIOR WALLS TO BE 4" AND ALL INTERIOR WALLS TO BE 3 1/2", UNLESS OTHERWISE NOTED.
  - HATCHED AREAS INDICATE DROPPED CEILING.
  - SEE "BRACED WALL PANEL DETAIL SHEET" FOR SPECIAL WALL FRAMING LOCATIONS AND HEADER SIZES, IF APPLICABLE.

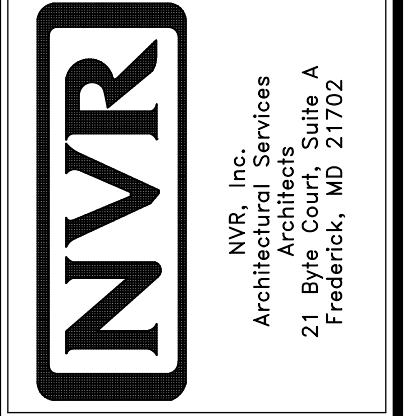
STEEL LINTEL SCHEDULE	
BRICK LINTEL "L1": 12"x4"x1/2"X11'-0" STEEL ANGLE (1045) (1052)	
BRICK LINTEL "L2": 3/8"x4"x1/2"X11'-0" BENT STEEL PLATE (1052)	



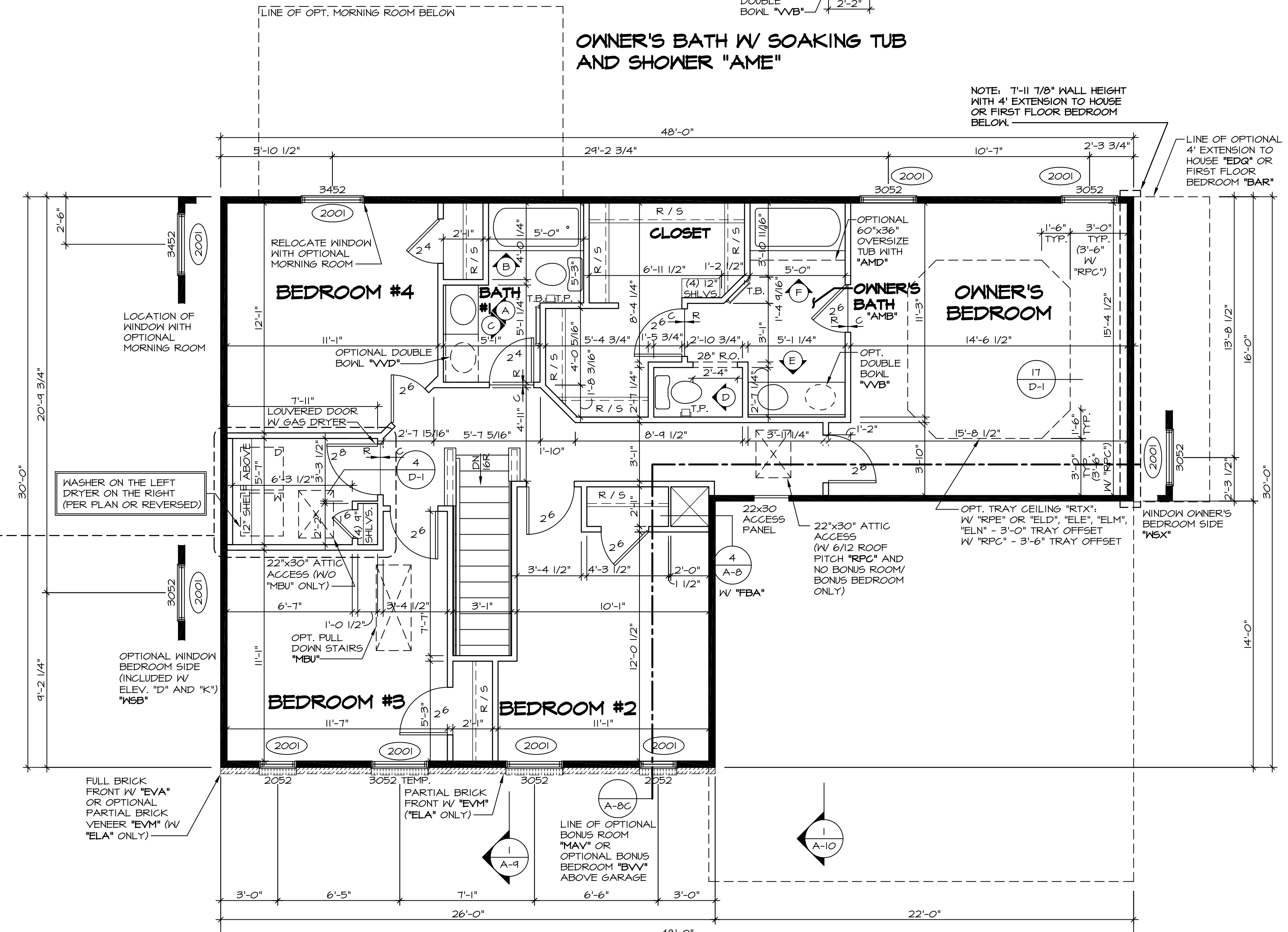
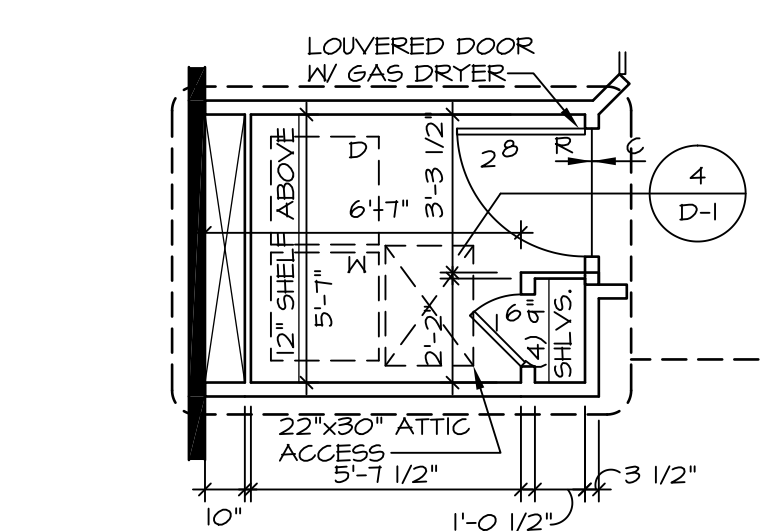
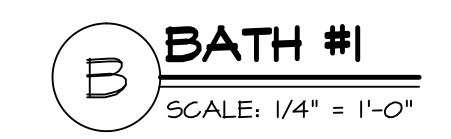
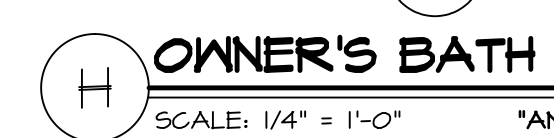
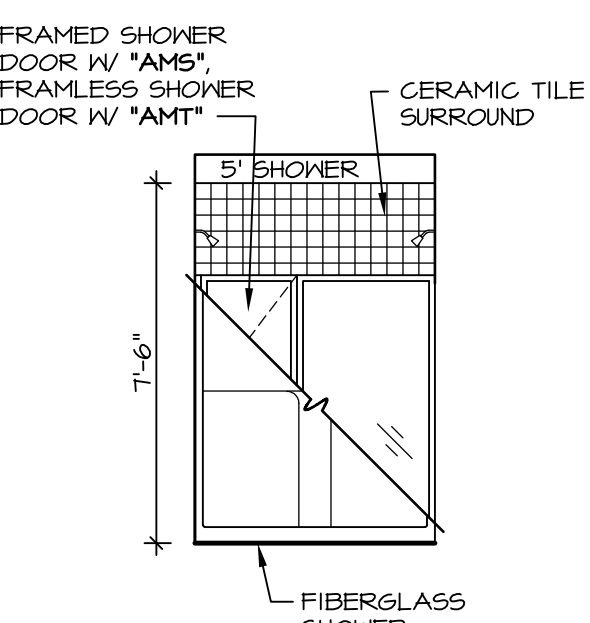
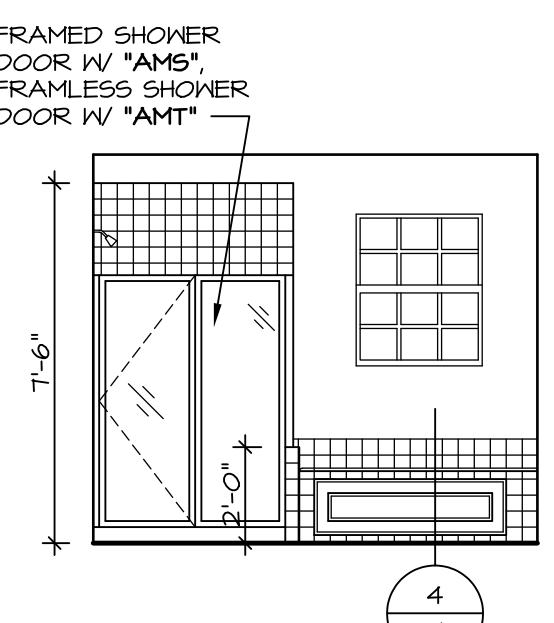
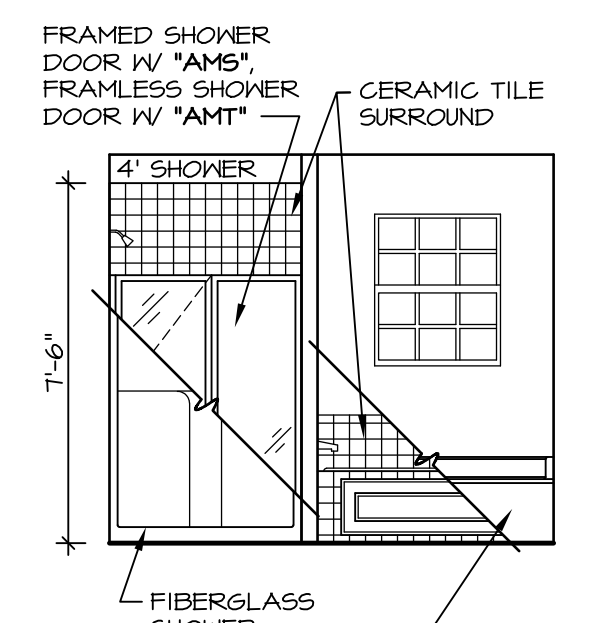
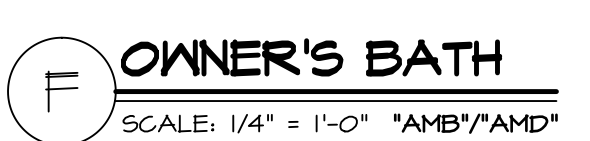
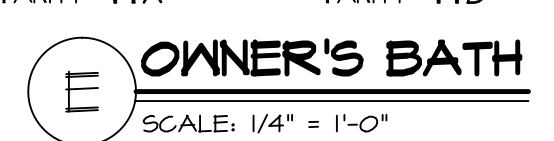
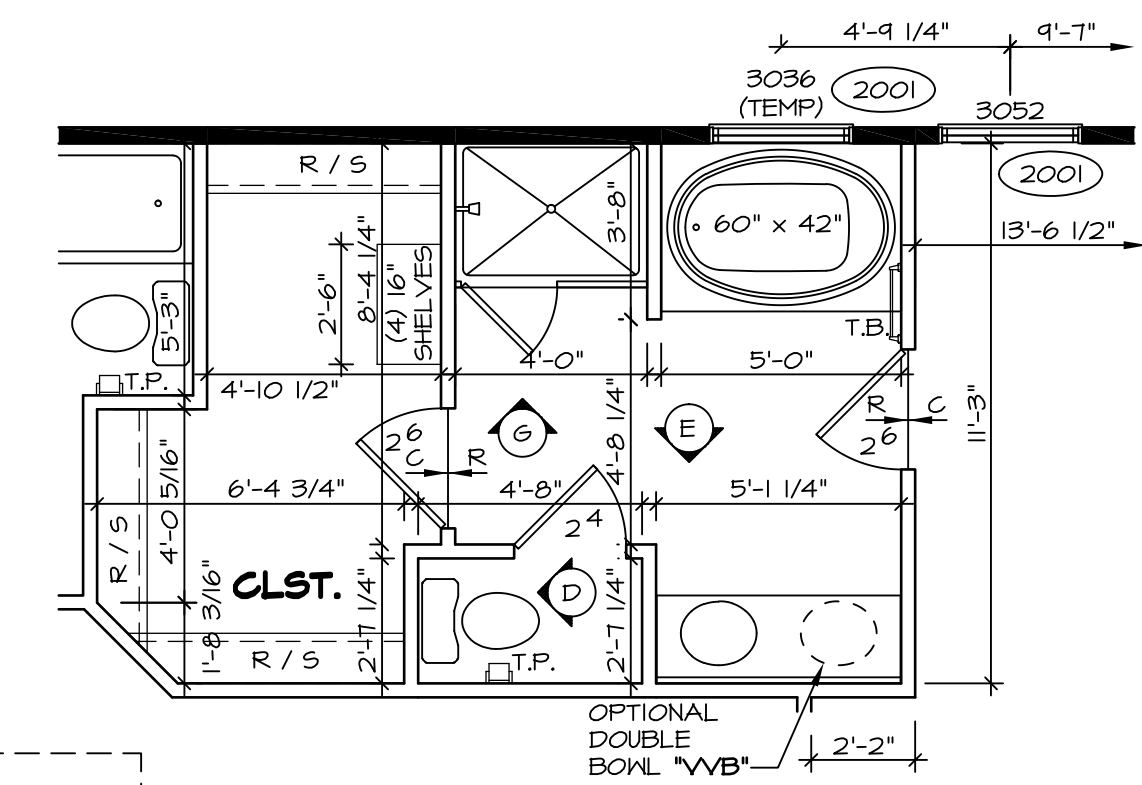
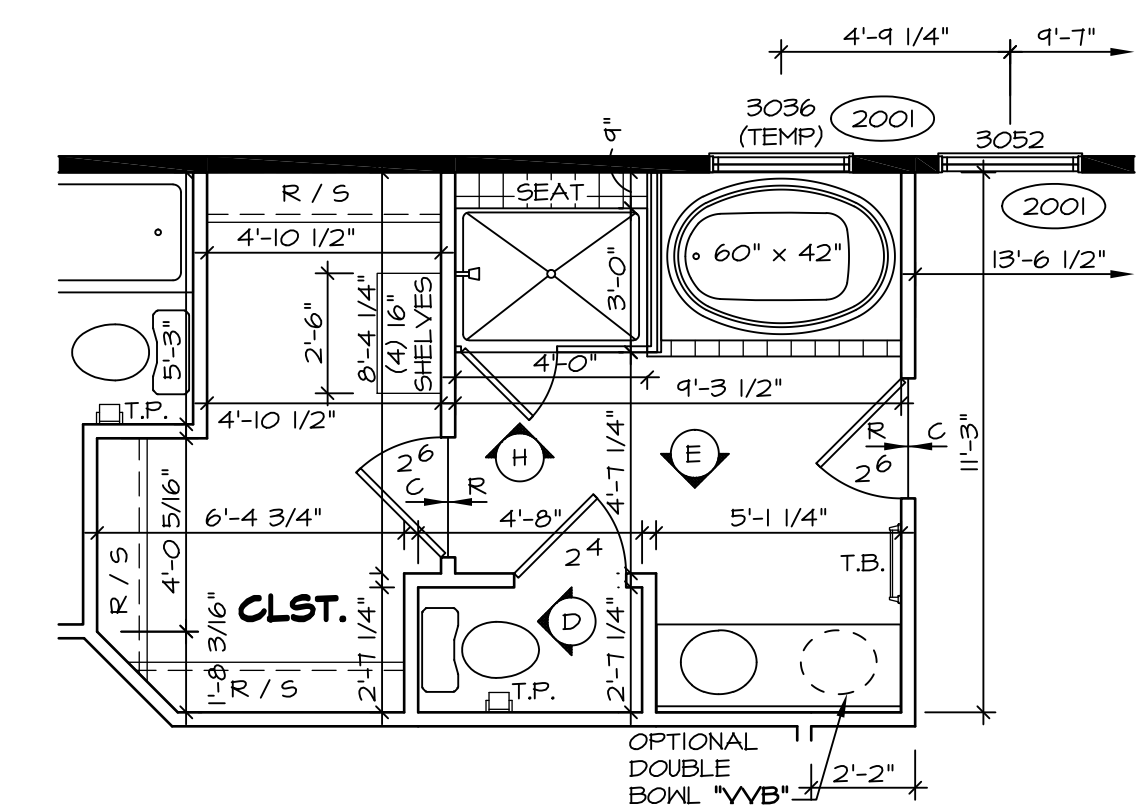
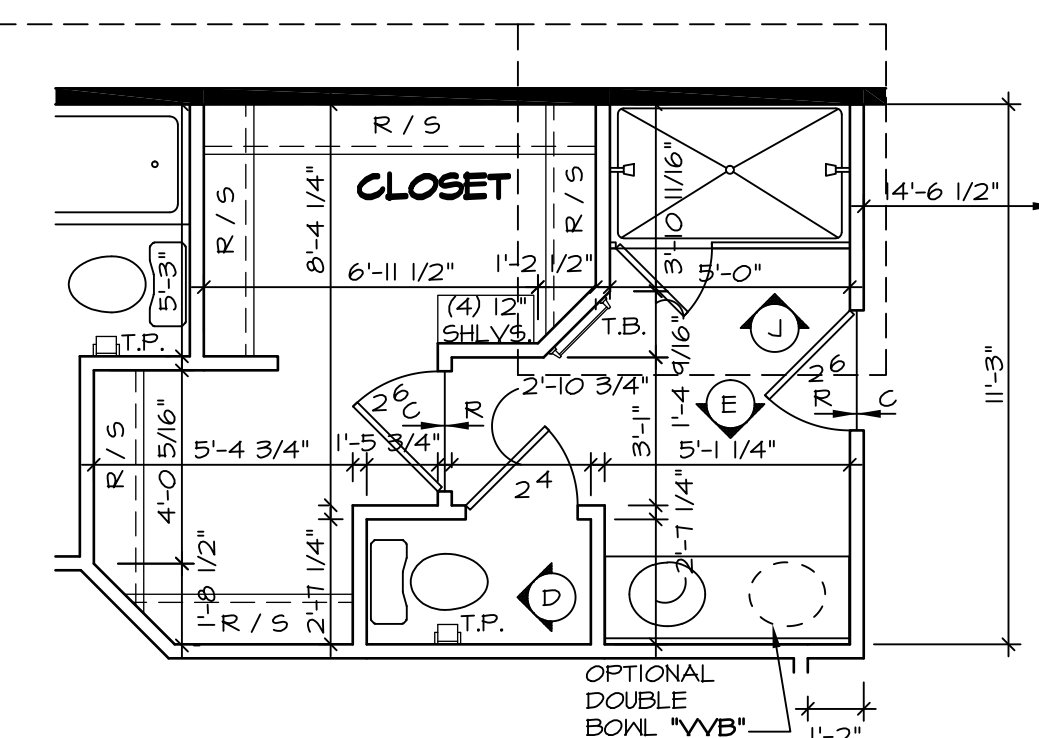
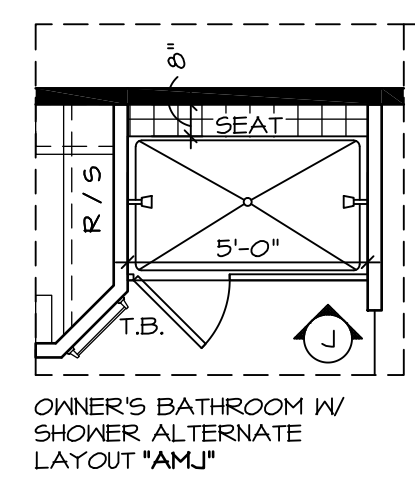
**ELEVATION "A" FIRST FLOOR PLAN**  
SCALE: 1/4" = 1'-0"  
"ELA"

**REMARKS**

REV. NO.	DATE	DESCRIPTION
20	7/16/15	DRA - SHOWER DOOR PROJECT I12
21	6/24/16	DRH - NOTES FOR CROWN AND CHAIR RAIL EDITED (PAR 4-0012)
22	8/8/16	J65 - REVISED JK5 AT MORN RM, BEAM TO BE FIELD INSTALLED (PAR 4-0012)
23	5/1/14	TES - FRANKIS TUB CONVERSIONS
24	5/2/14	SILK - GARAGE SERVICE DOOR RELOCATION PROJECT
25	7/22/14	SILK - ADDED 15/11" NOTE TO COUNTERTOP OVERHANGS (PAR ID: 25536)
26	8/21/14	SILK - REVISED 3 FT. 2x6 JK5 AT R2 BEAM IN MORN RM TO A PANEL (25536)
27	10/28/14	SILS - ROUGH AUDIT REVISIONS



SHEET NO.	MODEL	SET NO.	VERSION	DRAWN BY	DATE	OPTION
A-7	PALERMO	02	02	ZDM	04/09/12	OPTION
44						



**STRUCTURAL NOTES:**

- BEARING WALL
  - NON BEARING WALL
  - ENGINEERING PAGE NUMBER
  - INDICATES BEARING FROM POINT-LOAD ABOVE
- ALL HEADERS ARE (2) 2x6 W/ 2x4 WALLS OR (3) 2x6 W/ 2x6 WALLS, UNLESS OTHERWISE NOTED.
  - ALL HEADERS TO HAVE (1) 2x4 OR 2x6 JACK EACH END, UNLESS OTHERWISE NOTED.
  - ALL EXTERIOR WALLS TO BE 4" AND ALL INTERIOR WALLS TO BE 3 1/2", UNLESS OTHERWISE NOTED.
  - HATCHED AREAS INDICATE DROPPED CEILING.
  - SEE "BRACED WALL PANEL DETAIL SHEET" FOR SPECIAL WALL FRAMING LOCATIONS AND HEADER SIZES, IF APPLICABLE.

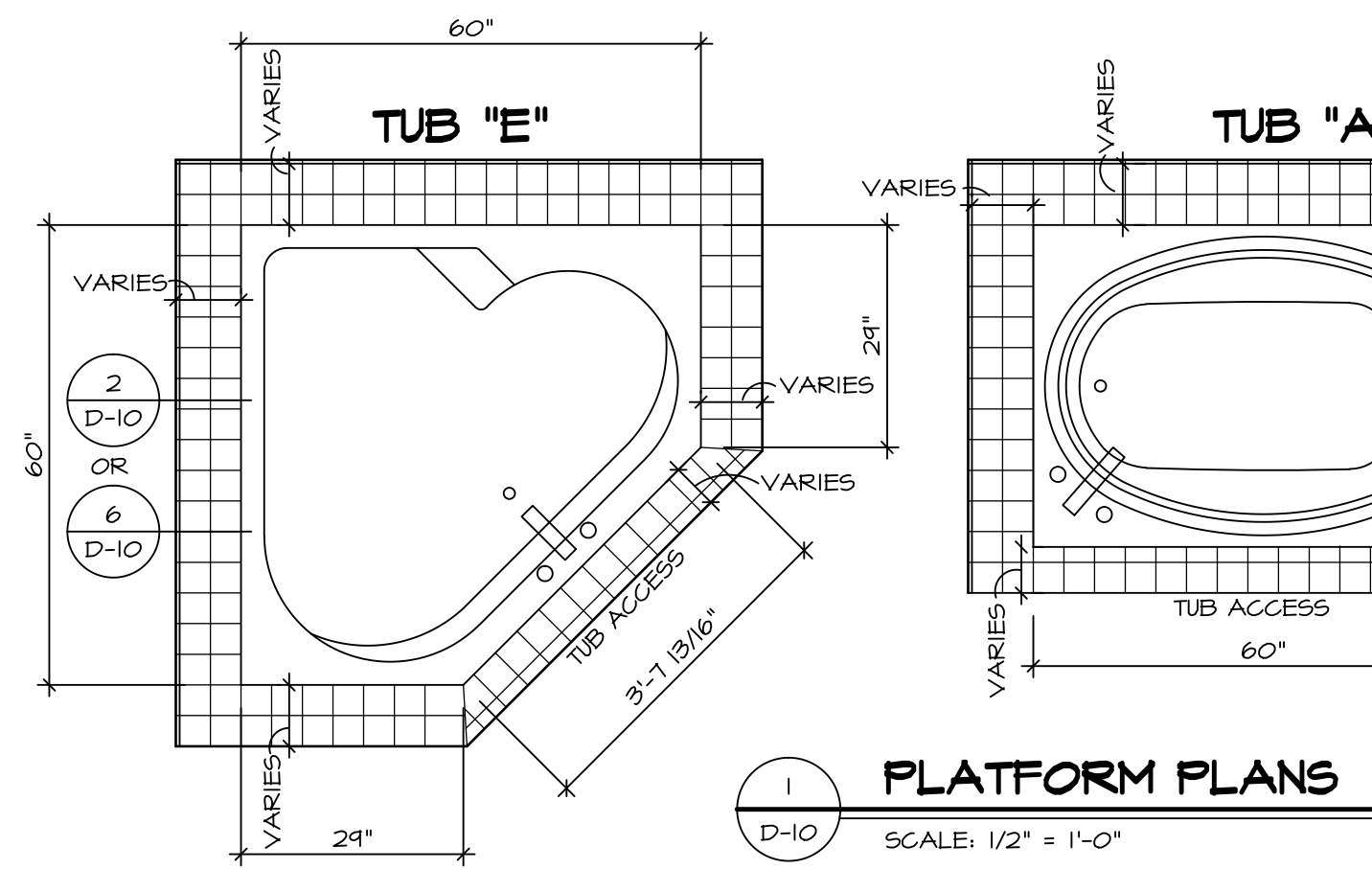
**NOTES:**

- TEMPERED GLASS SHOWER ENCLOSURE.
- TUB ACCESS PANELS PROVIDED AS NEEDED, ALL MATERIALS BY DIVISION.
- REFER TO SHEET D-10 FOR TUB AND SHOWER DETAILS.

REVISIONS	DATE	DESCRIPTION
1	8/1/14	MBT - REVISES WINDOWS IN BEDROOM #3 TO BE TEMP.
2	10/06/14	SL5 - ROUGH AUDIT REVISIONS
3	7/16/15	DRA - SHOWER DOOR PROJECT I12
4	10/29/15	CLS - REVISED DOORWAY INTO BEDROOM #2 AND #3 TO 9'-4 1/2" (PAR ID 395765)
5	9/16/16	CLS - ADDED ATTIC ACCESS WITH 6/12 ROOF PITCH (PAR ID 39092)
6	8/19/13	ENH - REVISED OWNER'S BATH NOTE (PAR #9007)
7	3/25/14	DAG - REVISED OPT. WINDOW BEDROOM SIDE NOTE
8	5/1/14	TES - FRANZIS TUB CONVERSIONS
9	7/15/14	SLK - REVISED BACK OF LAUNDRY CLOSET FROM 2x2 TO 2x4 (PAR. 25498)

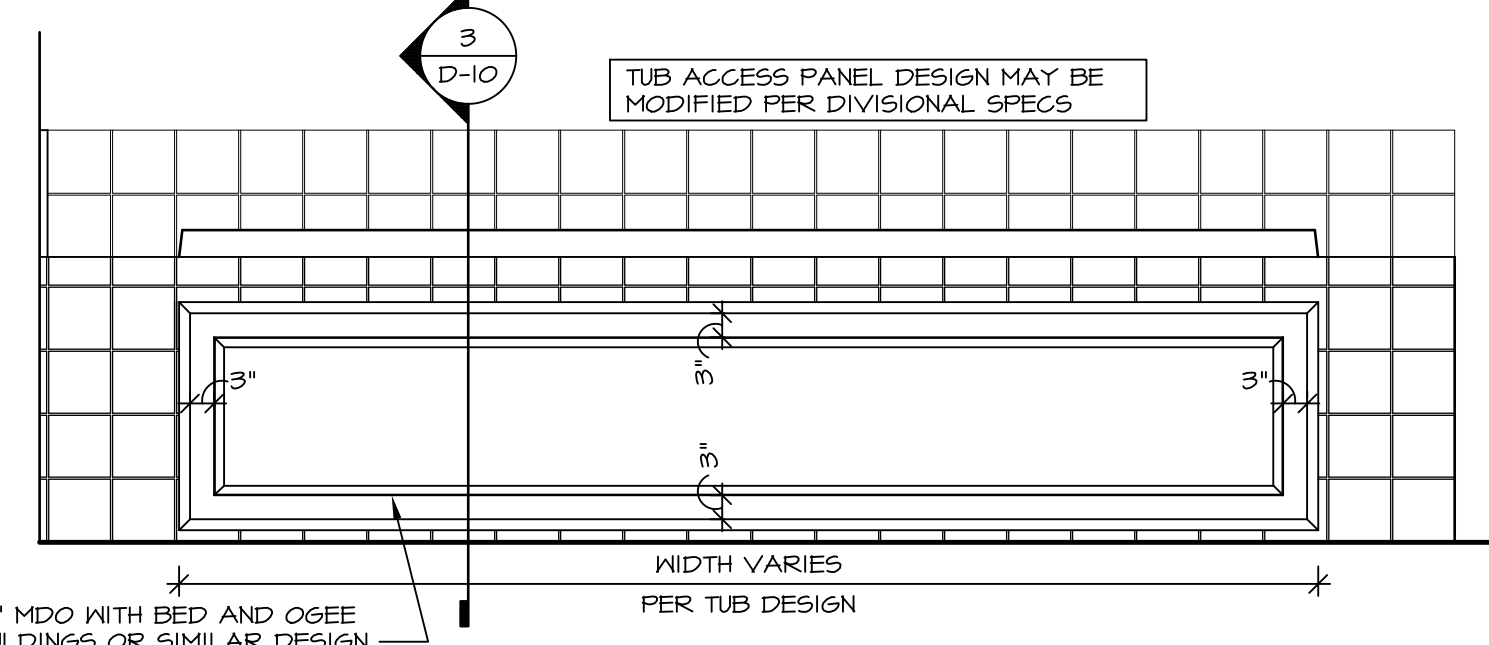
  

MODEL	PALERMO
DRAWING TITLE	SECOND FLOOR PLANS
DATE	04/02/12
OPTION	
SHEET NO.	A-9
49	

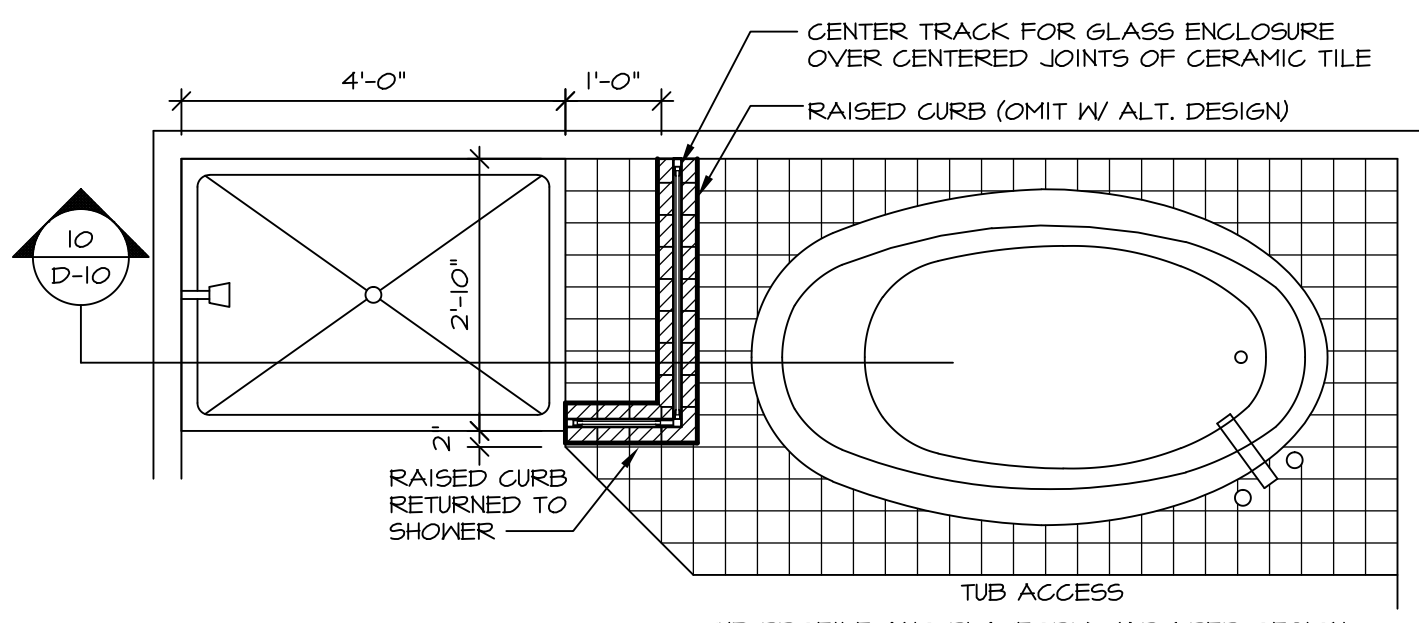


**1 PLATFORM PLANS**  
D-10 SCALE: 1/2" = 1'-0"

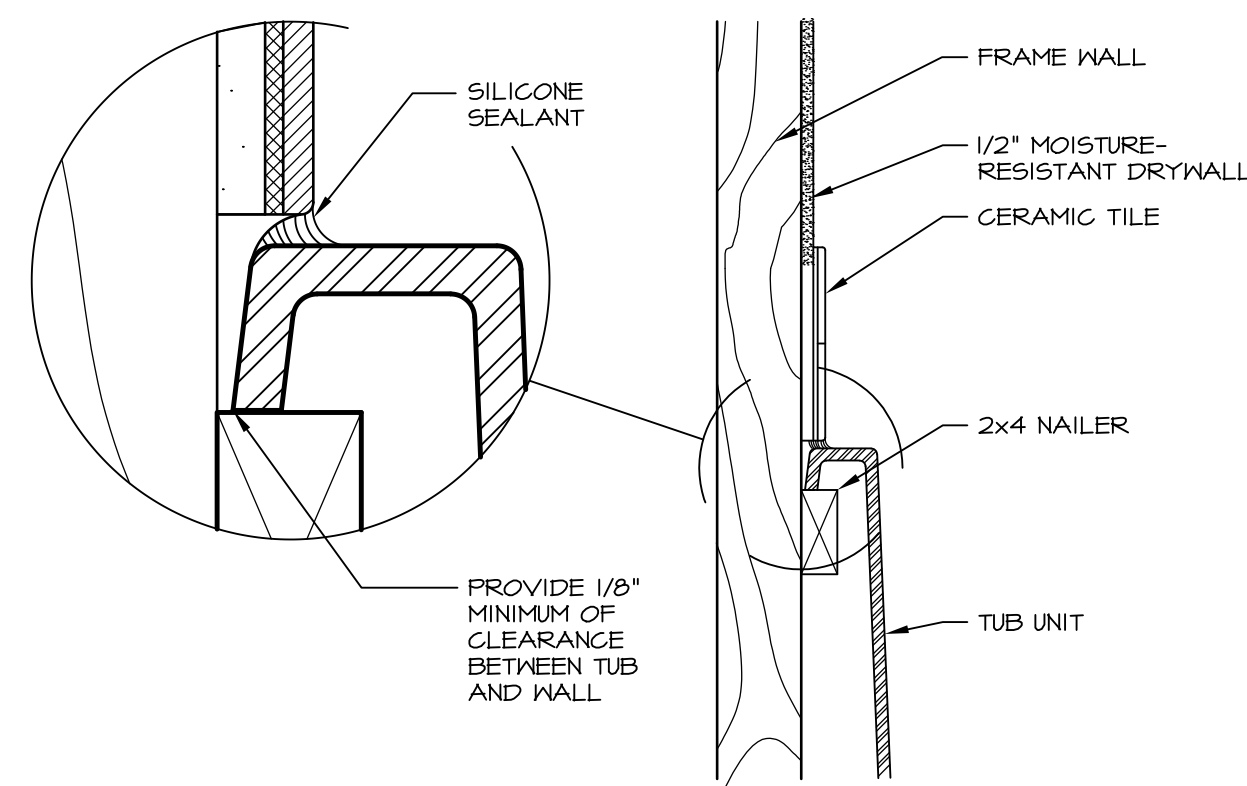
TUB	MANUF.	HEIGHT	WIDTH	LENGTH	TUB DECK PANEL HEIGHT
"A"	KOHLER/ STERLING	18 3/4"	42"	60"	17 1/8"
"C"	KOHLER/ STERLING	18 3/4"	36"	60"	17 1/8"
"E"	KOHLER/ STERLING	19 1/2"	60"	60"	17 7/8"
"L"	KOHLER/ STERLING	18 1/2"	42"	72"	16 7/8"
"N"	KOHLER/ STERLING	18 3/4"	36"	72"	17 1/8"



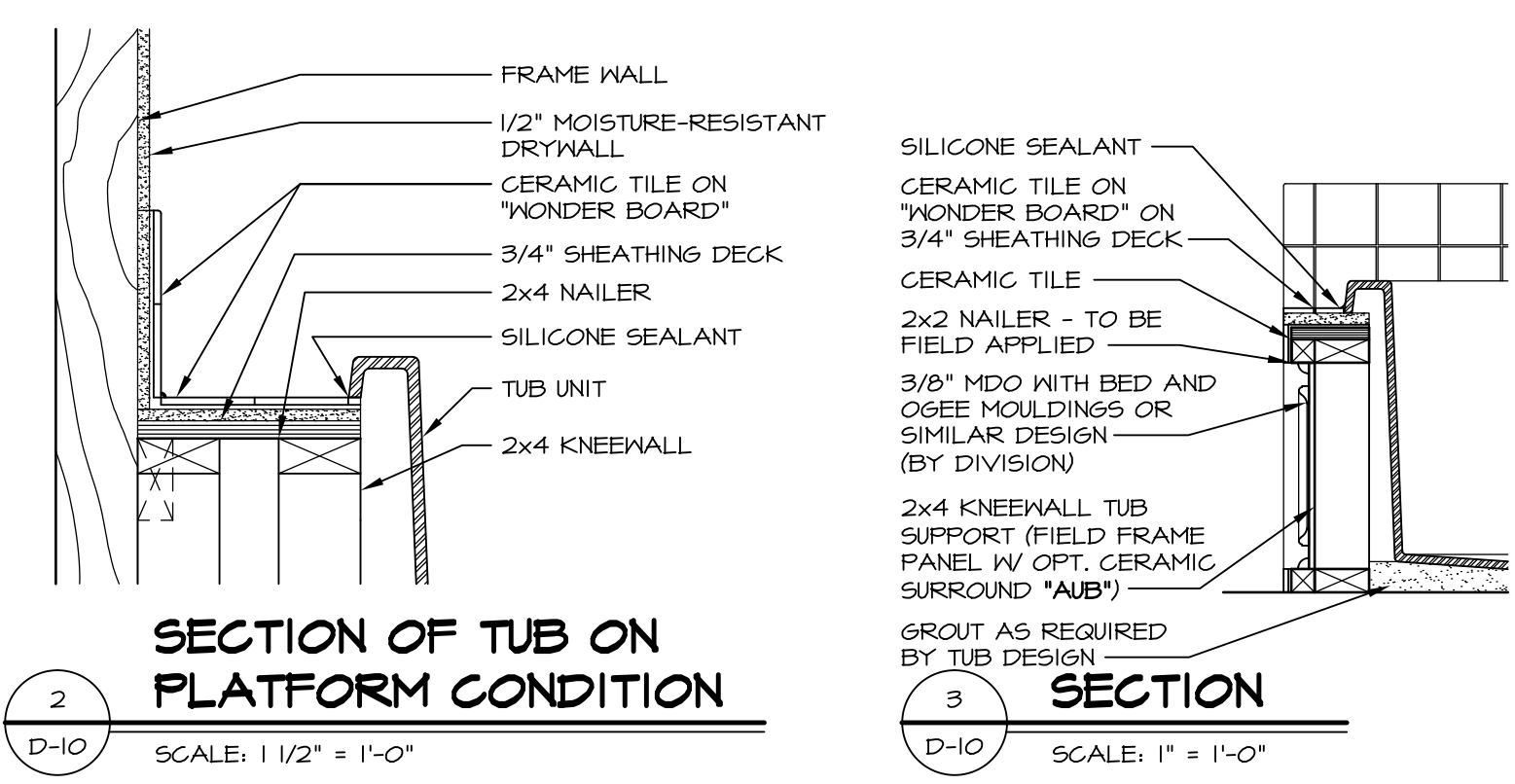
**3 ELEVATION**  
D-10 SCALE: 1/2" = 1'-0"



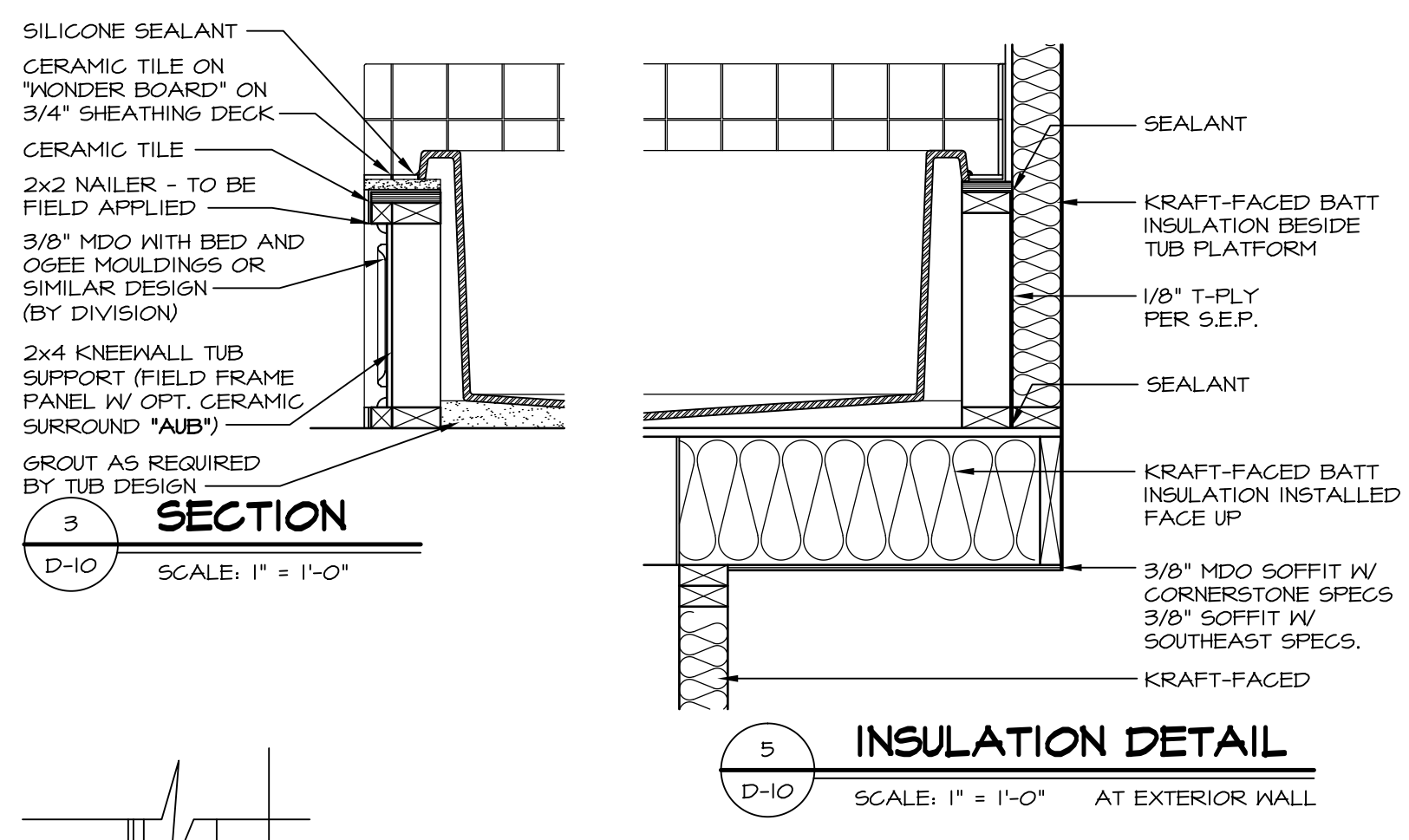
**4 SHOWER SEAT PLAN / DETAIL**  
D-10 SCALE: 1/2" = 1'-0"



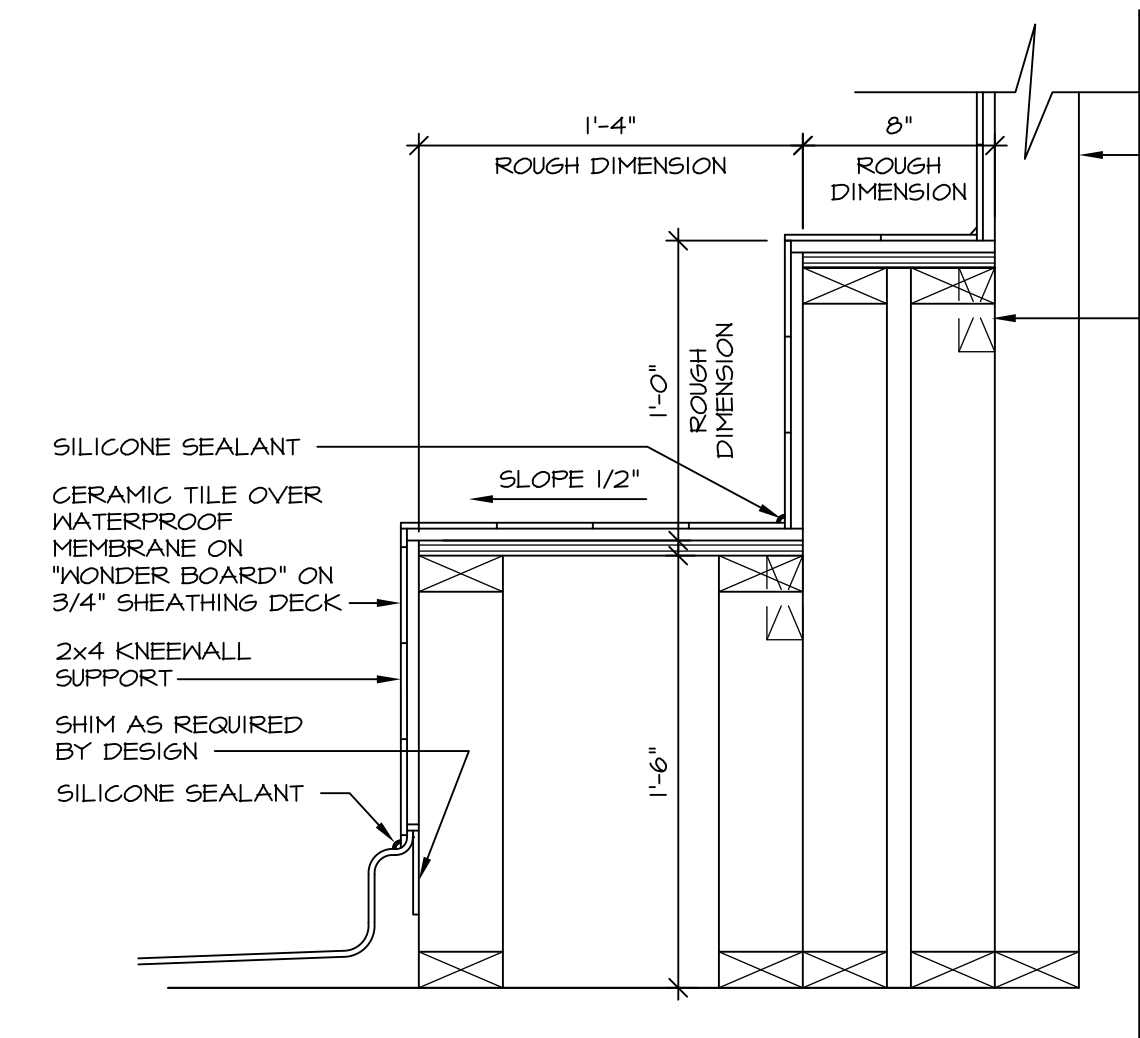
**6 SECTION OF TUB TO WALL CONDITION**  
D-10 SCALE: 1 1/2" = 1'-0"



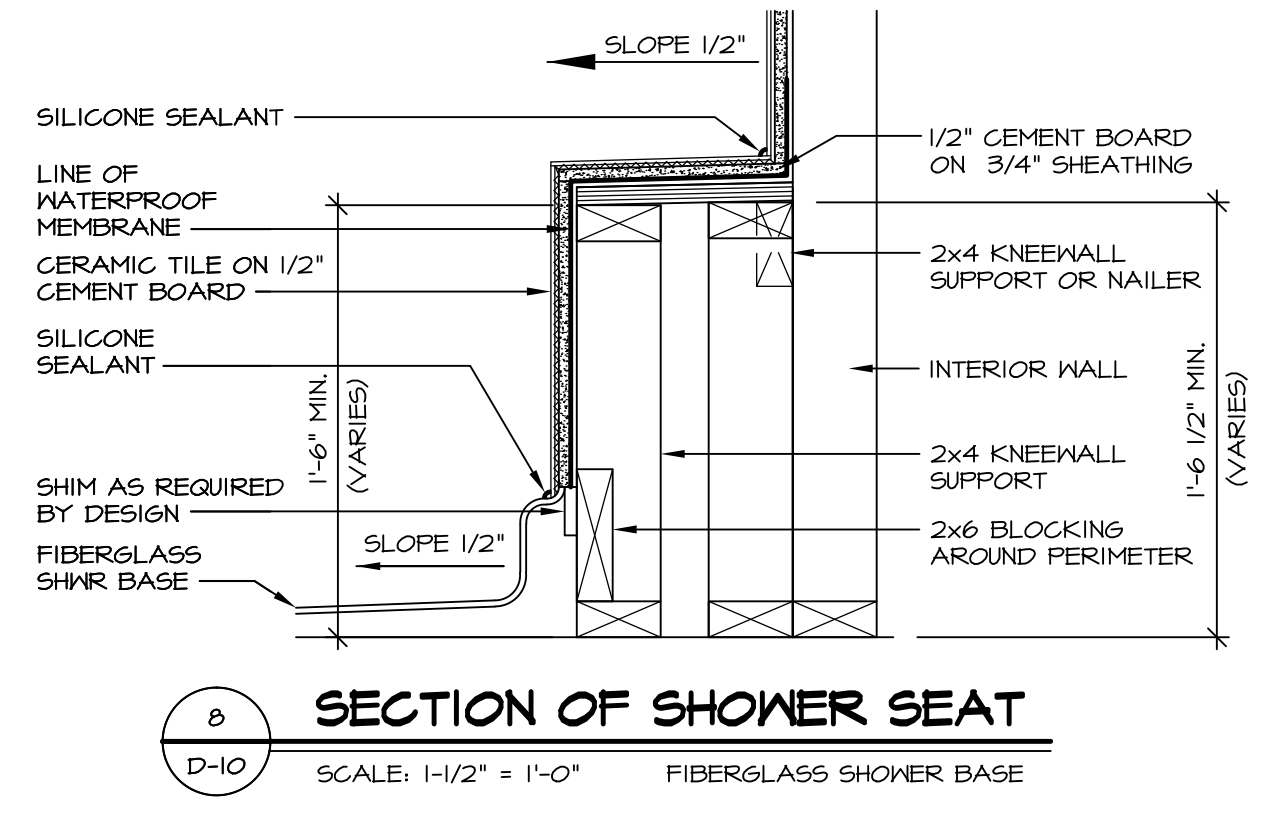
**2 SECTION OF TUB ON PLATFORM CONDITION**  
D-10 SCALE: 1 1/2" = 1'-0"



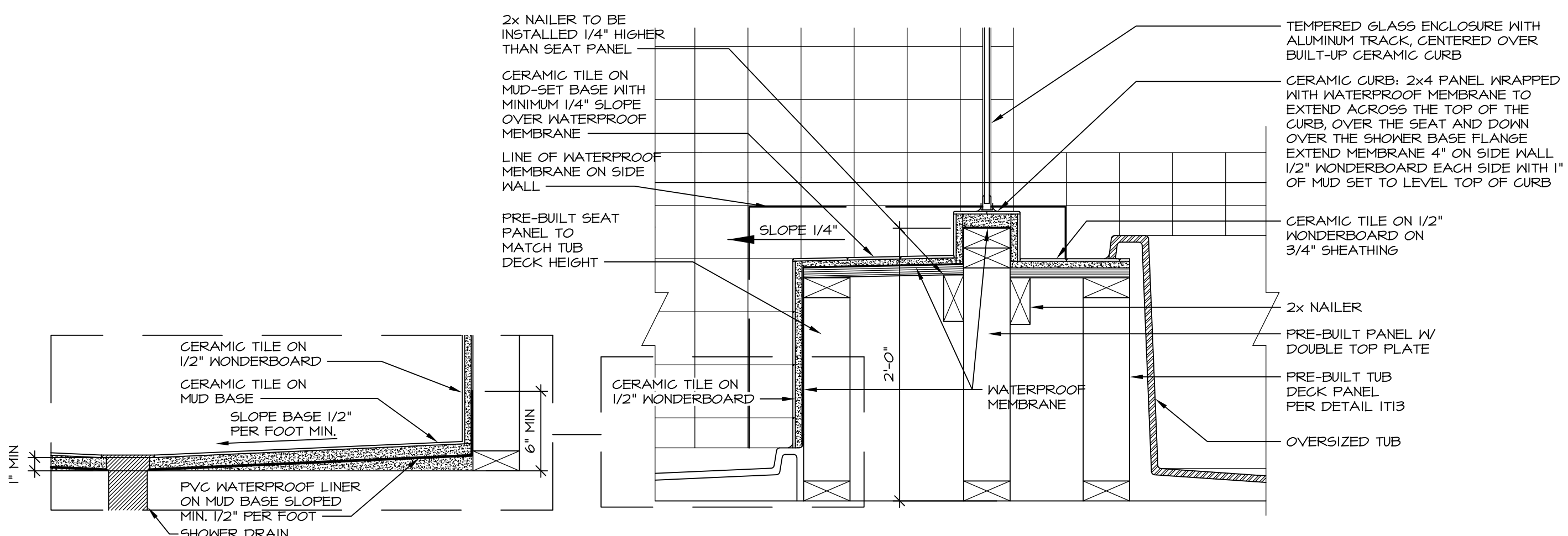
**5 INSULATION DETAIL**  
D-10 SCALE: 1" = 1'-0" AT EXTERIOR WALL



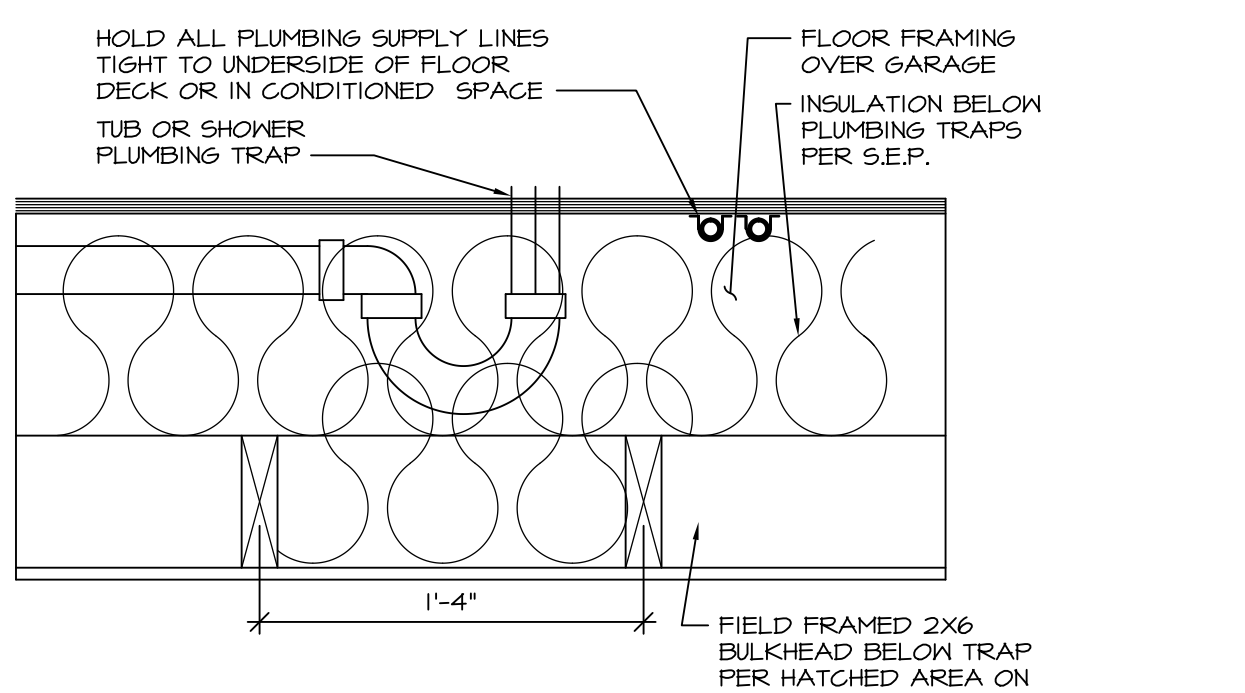
**7 SECTION OF SHOWER SEAT AND SHELF**  
D-10 SCALE: 1 1/2" = 1'-0"



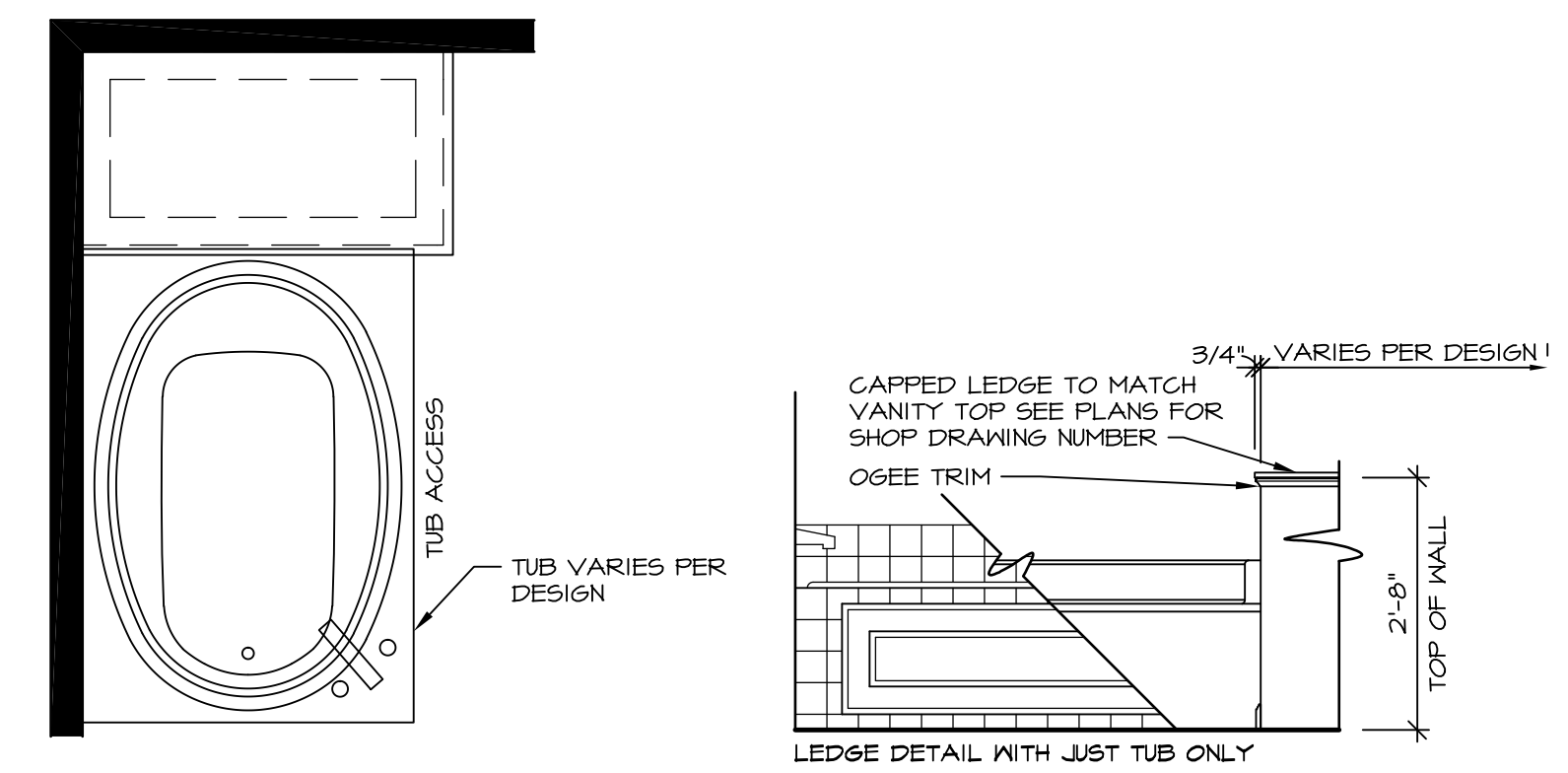
**8 SECTION OF SHOWER SEAT**  
D-10 SCALE: 1-1/2" = 1'-0" FIBERGLASS SHOWER BASE



**10 SHOWER SEAT SECTION**  
D-10 SCALE: 1-1/2" = 1'-0"

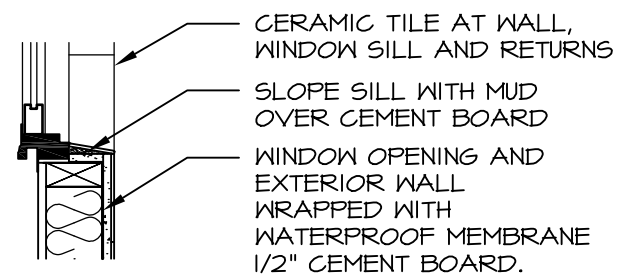


**11 PLUMBING TRAP INSULATION**  
D-10 SCALE: 1 1/2" = 1'-0"

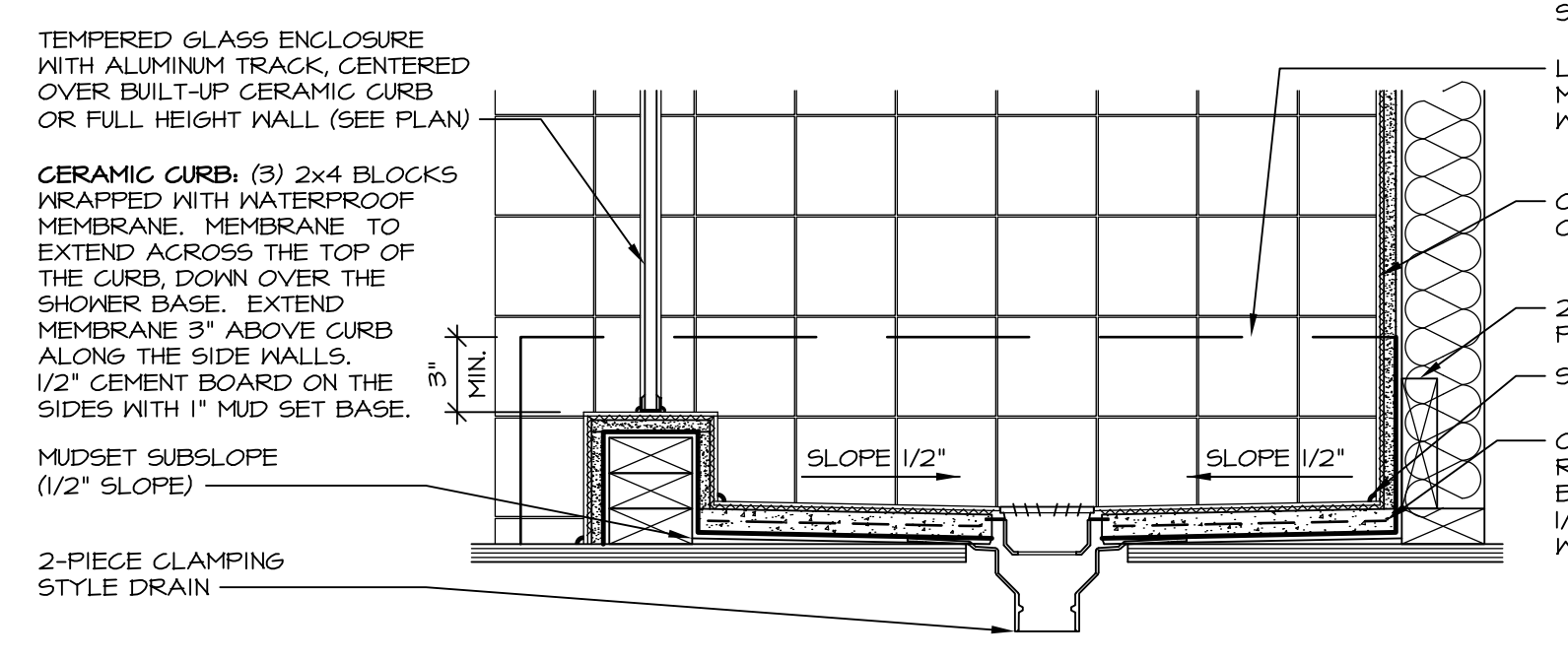


**12 BATHROOM LEDGE DETAIL**  
D-10 SCALE: 1/2" = 1'-0"

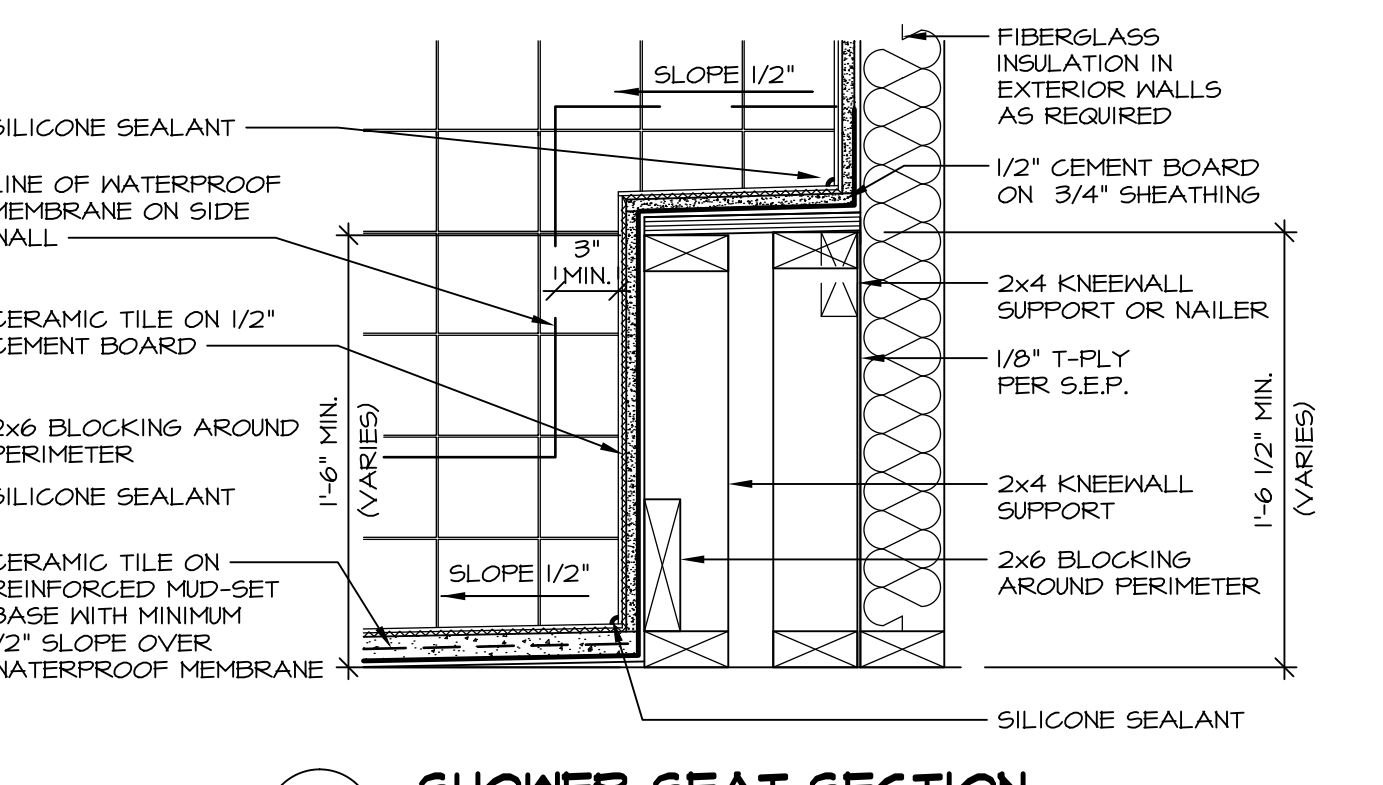
**NOTES:**  
1. CONCRETE WONDERBOARD TO BE APPLIED HORIZONTALLY W/ FACTORY EDGE HELD 1/4" ABOVE SHEATHING DECK.  
2. ALL OPENINGS CUT IN DRYWALL AND ALL CUT JOINTS SHALL BE SEALED W/ ADHESIVE OR MATERIAL RECEIVED BY MANUF.  
3. ALL JOINTS TO RECEIVE A TAPE AND BLOCK COAT; NAIL HEADS TO RECEIVE ONE COAT ONLY.



**13 SILL DETAIL**  
D-10 SCALE: 1" = 1'-0"



**14 SHOWER SECTION**  
D-10 SCALE: 1 1/2" = 1'-0" MUD-SET



**15 SHOWER SEAT SECTION**  
D-10 SCALE: 1 1/2" = 1'-0" MUD-SET SHOWER

REV. NO.	DATE	REMARKS
30	7/16/13	CAB - REVISED DTLS 14 AND 15 FROM D-6 TO D-10
31	7/24/13	BK1 - REVISED PLYWOOD NOTE TO "SHEATHING"
32	3/25/14	CL5 - REVISED TUB BLOCKS AND PANEL HEIGHTS FOR PLATFORMS
33	5/27/14	CALB - REVISED SHOWER SEAT DETAILS
34	2/23/15	JLR - ADDED FAUCETS AND TUB ACCESS TO PLATFORM PLANS (PAR 181091)
35	11/2/15	6M6 - REV. DETAIL 1T22 TO SHOW PANEL UNDER SHOWER ENCLOSURE (LO BUILT GIBER)
36	11/6/15	5M4 - ADDED NOTE TO FIELD FRAME PANEL W/ CERAMIC SURROUND (PAR 35948)
28	4/21/13	CEL - VERIFIED CURRENT CODE COMPLIANT
24	6/17/13	CAB - REVISED LAYOUT / ADDED DETAILS 14 AND 15

**Ryan Homes**  
Architectural Services  
210 N. Main Street  
Thurmont, MD 21788

MODEL	SET NO.	CORNERSTONE
D-10 <td>1 <td>STANDARD DETAILS</td> </td>	1 <td>STANDARD DETAILS</td>	STANDARD DETAILS
		UPGRADE TUB DETAILS
		OPTION DESCRIPTION

DRAWN BY: ARG  
DATE: 08/31/14