

BH 115

7902 N. Bel Haven Lane

2 Story Slab

1 large tankless heater

2 Hose bibs - no valves required

1 - tiled shower

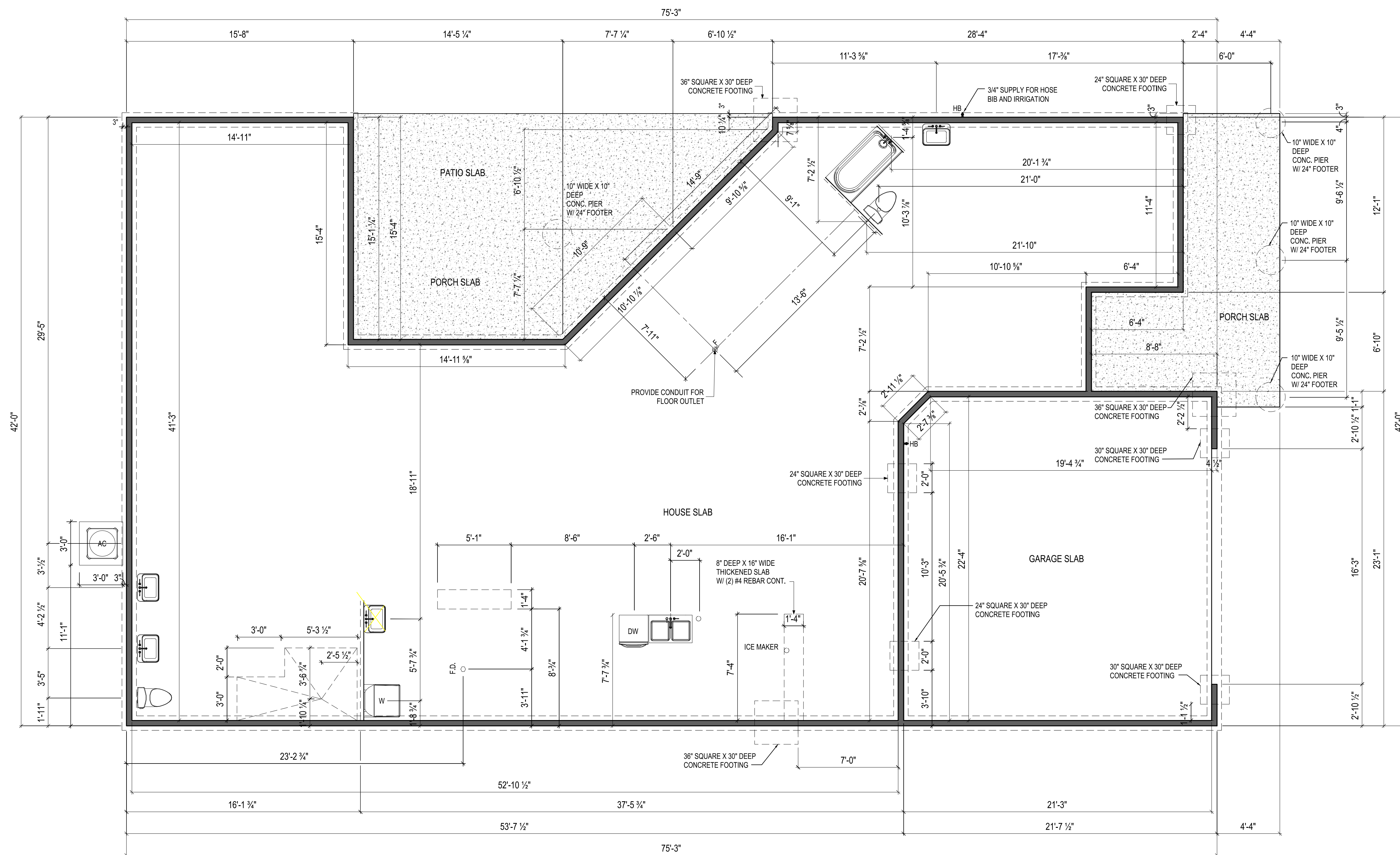
2 - RH tub

Irrigation system

Humidifier Valve

Gas Furnace , Tankless Heater , Fireplace

Higharc, Inc. is not an architectural firm nor are the artistic representations contained herein intended to be construed as ready-to-use architectural plans, construction documents, drawings, renderings, or any other similar or related documents. All drawings are artist's representations only and solely intended to reflect design intent derived exclusively from the home building plans and associated information, data, and specifications provided by Epcon Foundation DG. Higharc, Inc. is not responsible, nor may it be held liable for any errors or omissions contained herein or resulting from its usage. Any usage of the representations should be reviewed by local professionals to ensure conformance with local and state codes and be field verified prior to the start of any construction.



NOTES:
THICKENED SLAB SHALL BE REINFORCED WITH CONTINUOUS (2) #4 REBAR

ISSUE	DESCRIPTION	DATE
01	BUILDER SET	6/29/2024

PROJECT
PLAN: BH Promenade Plus D4
ELEV: Elevation B
LOT: 115

DRAWING TITLE
FOUNDATION PLAN

SHEET NUMBER
A-050

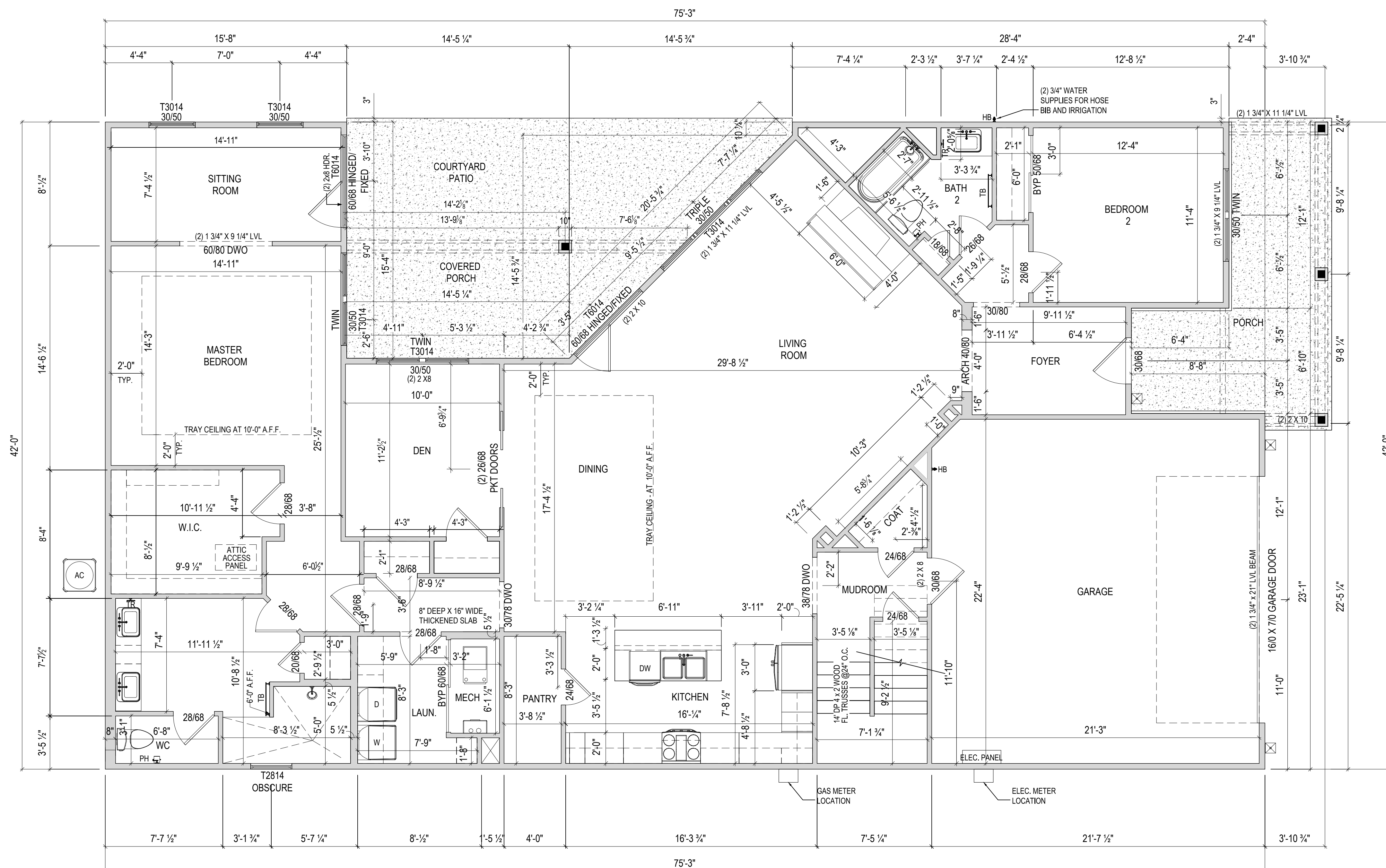
NOT FOR CONSTRUCTION



Epcon Foundation DG

Bel Haven LLC
West Chester, OH.

Higharc, Inc. is not an architectural firm nor are the artistic representations contained herein intended to be construed as ready-to-use architectural plans, construction documents, drawings, renderings, or any other similar or related documents. All drawings are artist's representations only and solely intended to reflect design intent derived exclusively from the home building plans and associated information, data, and specifications provided by Epcon Foundation DG. Higharc, Inc. is not responsible, nor may it be held liable for any errors or omissions contained herein or resulting from its usage. Any usage of the representations should be reviewed by local professionals to ensure conformance with local and state codes and be field verified prior to the start of any construction.



NOTES:
- ARCHED OPENINGS: SPRING POINT @ 78" A.F.F.
TOP OF ARCH 8'-6" ABOVE SPRING POINT.

ISSUE	DESCRIPTION	DATE
01	BUILDER SET	6/29/2024

PROJECT
PLAN: BH Promenade Plus D4
ELEV: Elevation B
LOT: 115

DRAWING TITLE FIRST FLOOR PLAN

SHEET NUMBER
A-101

NOT FOR CONSTRUCTION

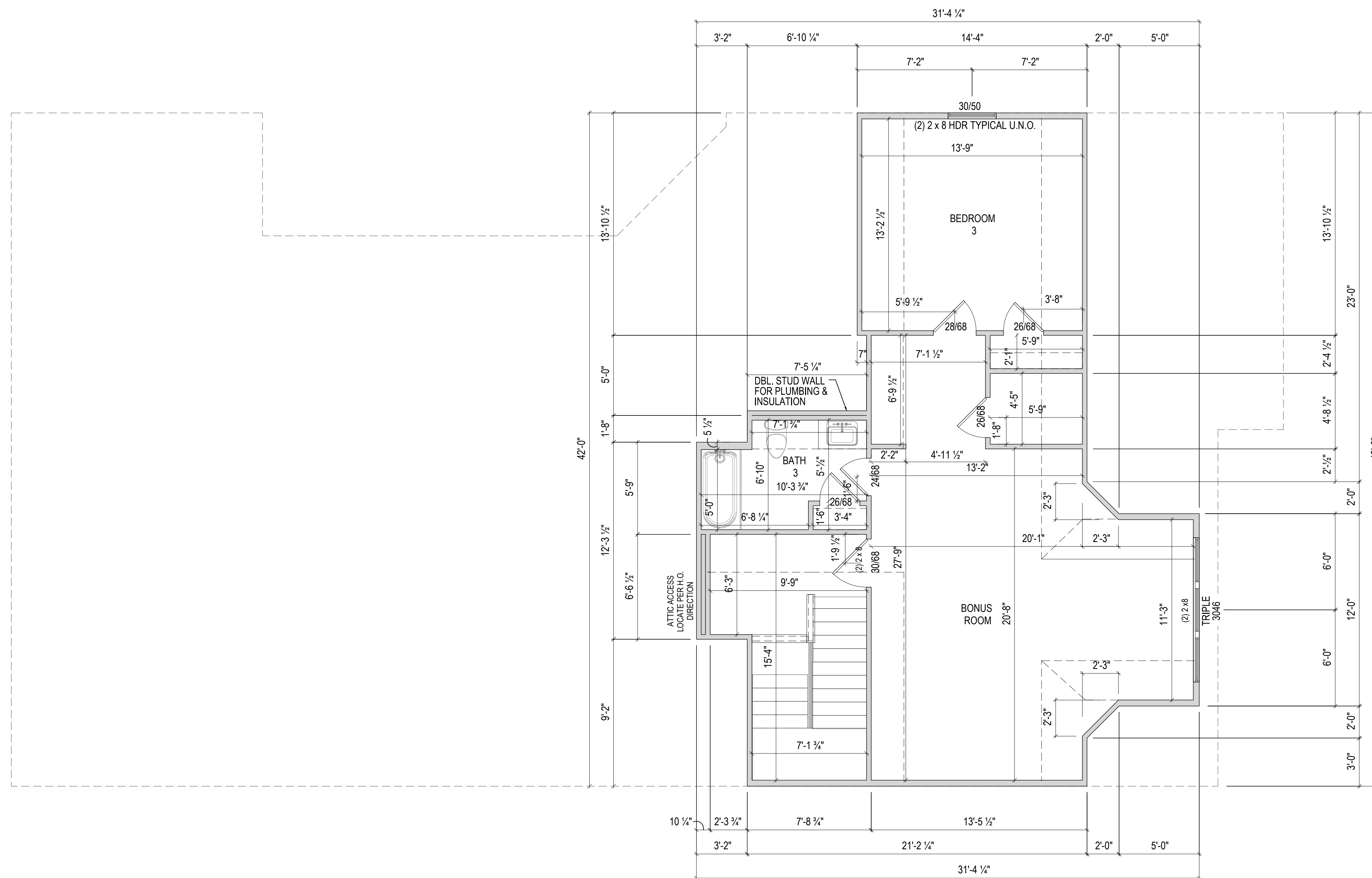
© 2024 HIGHARC, INC.



Epcon Foundation DG

Bel Haven LLC
West Chester, OH.

Higharc, Inc. is not an architectural firm nor are the artistic representations contained herein intended to be construed as ready-to-use architectural plans, construction documents, drawings, renderings, or any other similar or related documents. All drawings are artist's representations only and solely intended to reflect design intent derived exclusively from the home building plans and associated information, data, and specifications provided by Epcon Foundation DG. Higharc, Inc. is not responsible, nor may it be held liable for any errors or omissions contained herein or resulting from its usage. Any usage of the representations should be reviewed by local professionals to ensure conformance with local and state codes and be field verified prior to the start of any construction.



ISSUE	DESCRIPTION	DATE
01	BUILDER SET	6/29/2024

PROJECT
PLAN: BH Promenade Plus D4
ELEV: Elevation B
LOT: 115

DRAWING TITLE
SECOND FLOOR PLAN

SHEET NUMBER
A-102

NOT FOR CONSTRUCTION

© 2024 HIGHARC, INC.

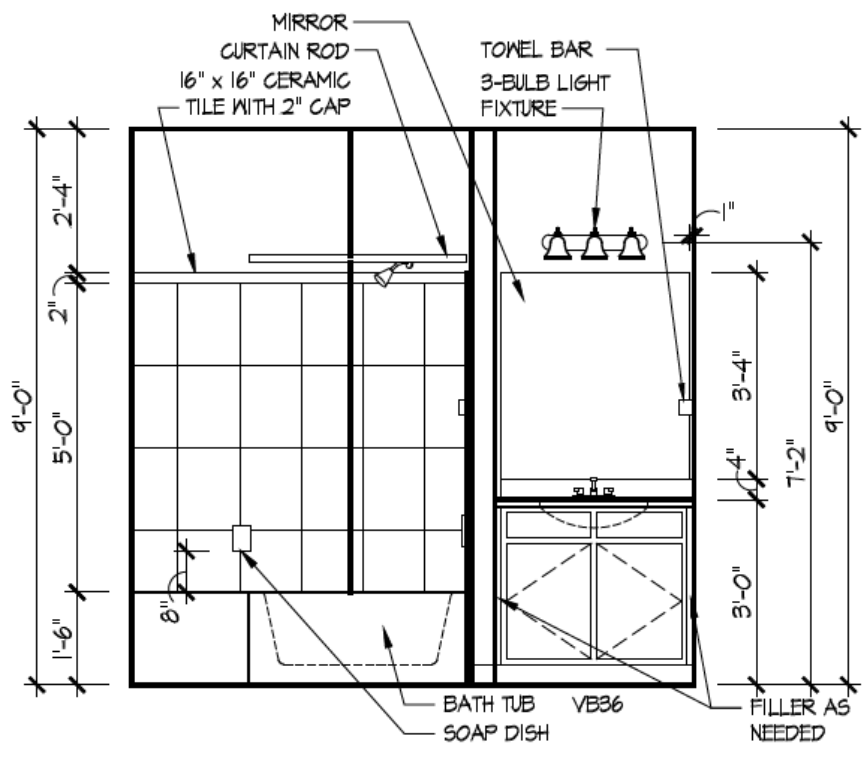


EPCON
COMMUNITIES

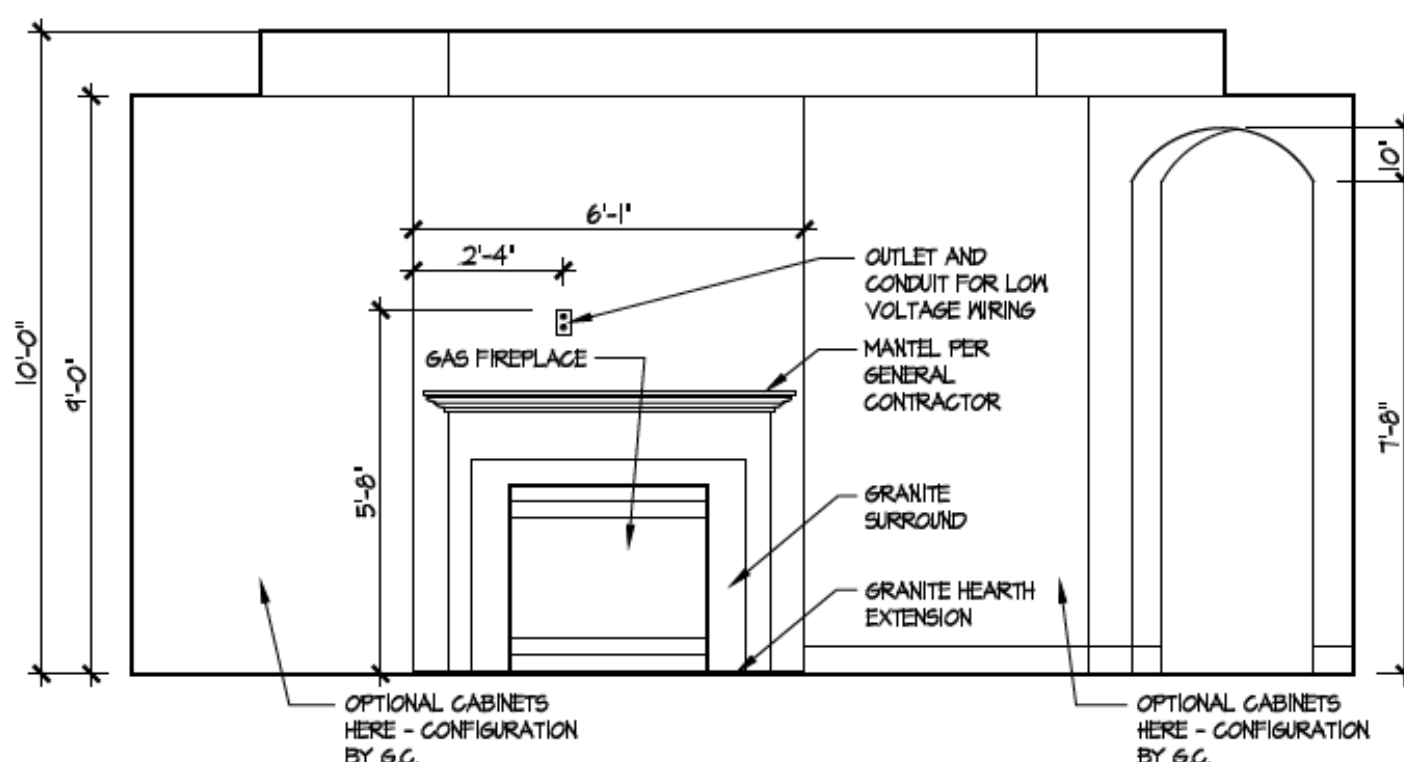
Epcon Foundation DG

Bel Haven LLC
West Chester, OH.

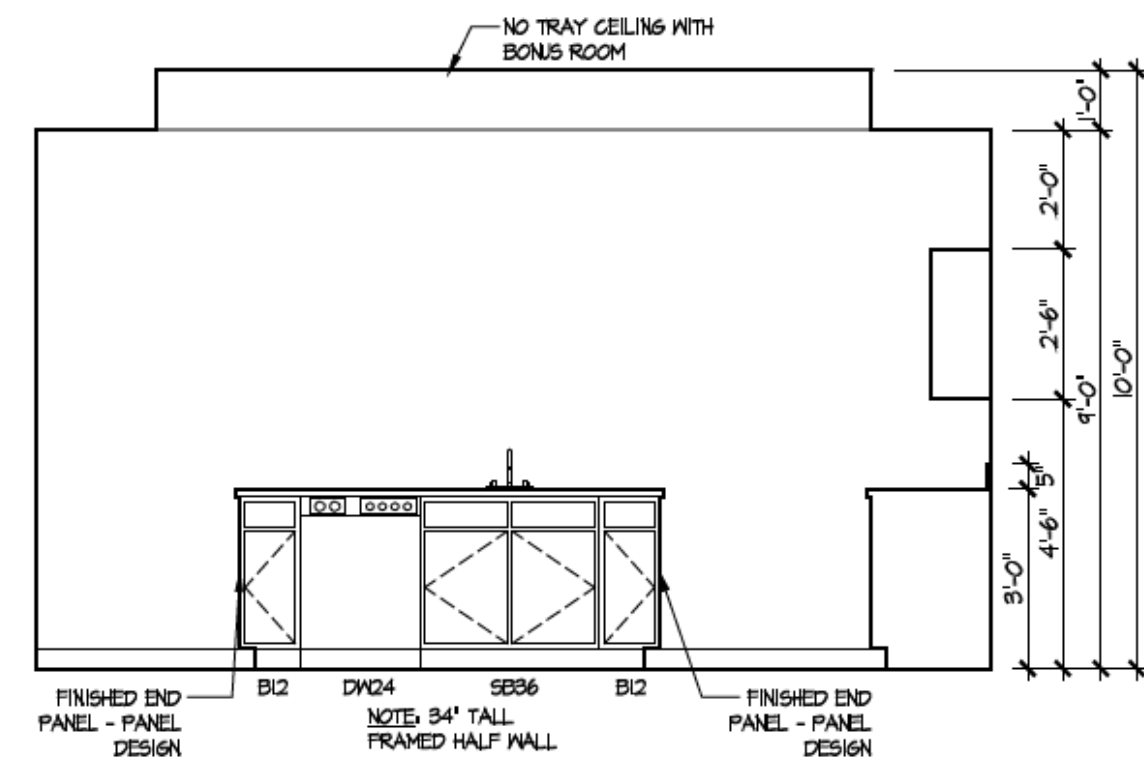
Higharc, Inc. is not an architectural firm nor are the artistic representations contained herein intended to be construed as ready-to-use architectural plans, construction documents, drawings, renderings, or any other similar or related documents. All drawings are artist's representations only and solely intended to reflect design intent derived exclusively from the home building plans and associated information, data, and specifications provided by Epcon Foundation DG. Higharc, Inc. is not responsible, nor may it be held liable for any errors or omissions contained herein or resulting from its usage. Any usage of the representations should be reviewed by local professionals to ensure conformance with local and state codes and be field verified prior to the start of any construction.



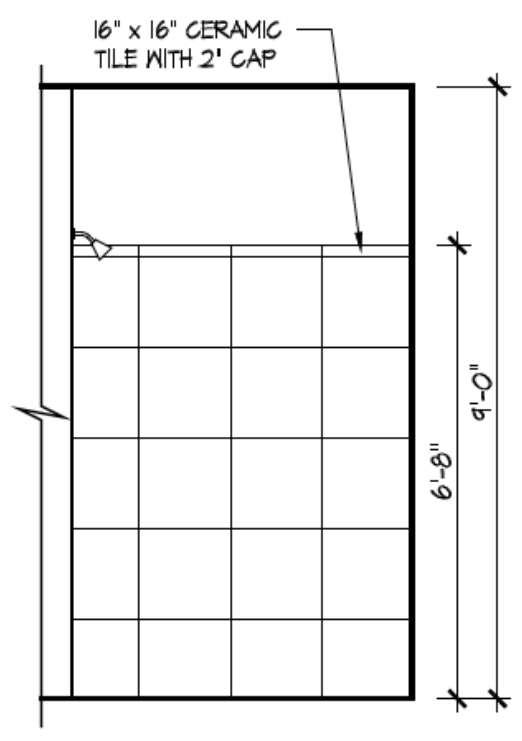
2 Bath 2 - Standard
A-402



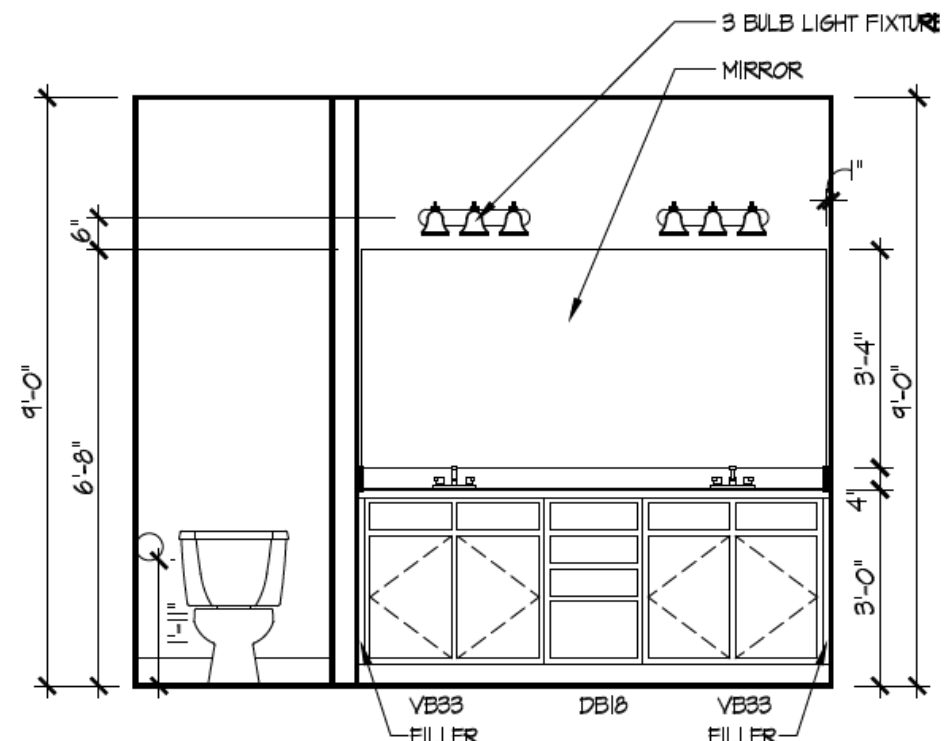
3 Fireplace
A-402



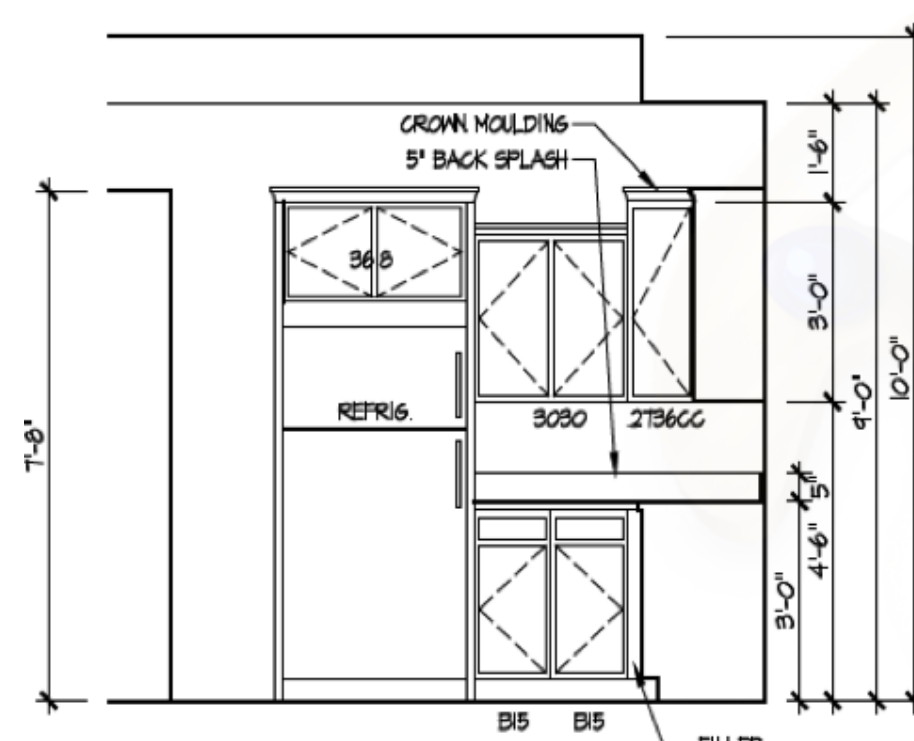
4 Kitchen - Island
A-402



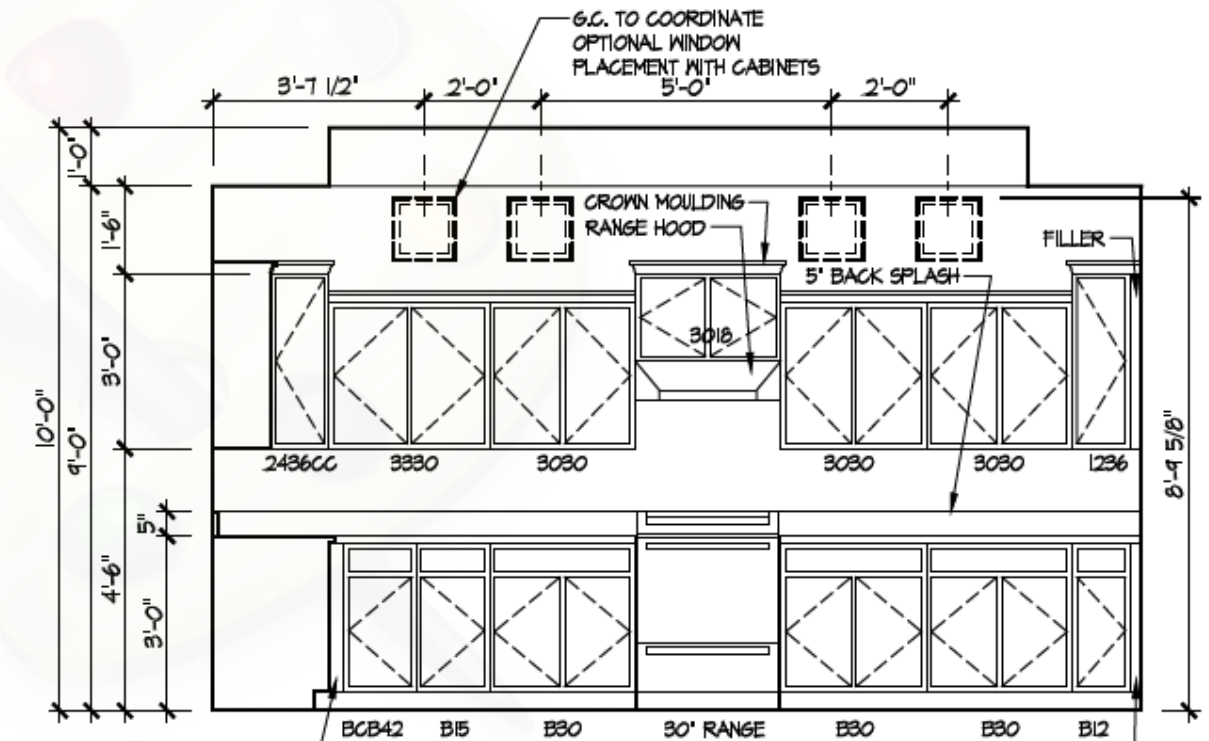
5 Master Bath Shower - Walk-in
A-402



6 Master Bath Vanity
A-402



7 Kitchen Staggered Layout
A-402



ISSUE	DESCRIPTION	DATE
01	BUILDER SET	6/29/2024

PROJECT
PLAN: BH Promenade Plus D4
ELEV: Elevation B
LOT: 115

DRAWING TITLE
DETAILS

SHEET NUMBER
A-402

NOT FOR CONSTRUCTION