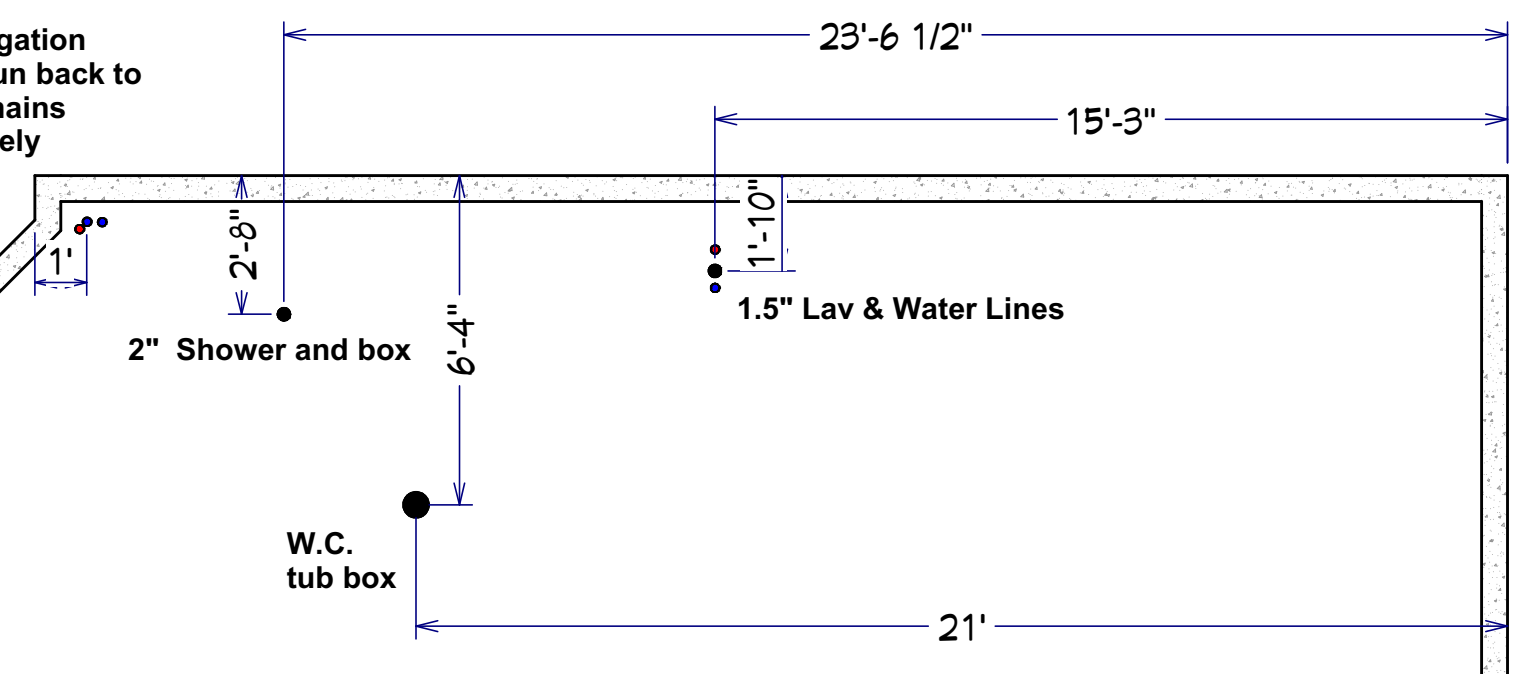


1/2" H/C Water  
AND  
3/4" Irrigation  
Line - run back to  
water mains  
separately



**ALL MEASUREMENT ARE TAKEN FROM OUTSIDE OF RIM WALL**  
**2 story home , dont forget stack and water by garage for 2nd floor**

**Make sure shower drain is no more than 3" under the top of the concrete to the top of the 2" pipe.**  
**We are getting the drains too high , allow pitch so that drain is under concrete at least 3"**

**Alex - Softener Rough !! - Bibs separate !!**

