

BH 126

7850 White Barn Lane

2 Story Slab

1 large tankless heater

2 Hose bibs - no valves required

1 - tiled shower

2 - RH tub

Laundry tub

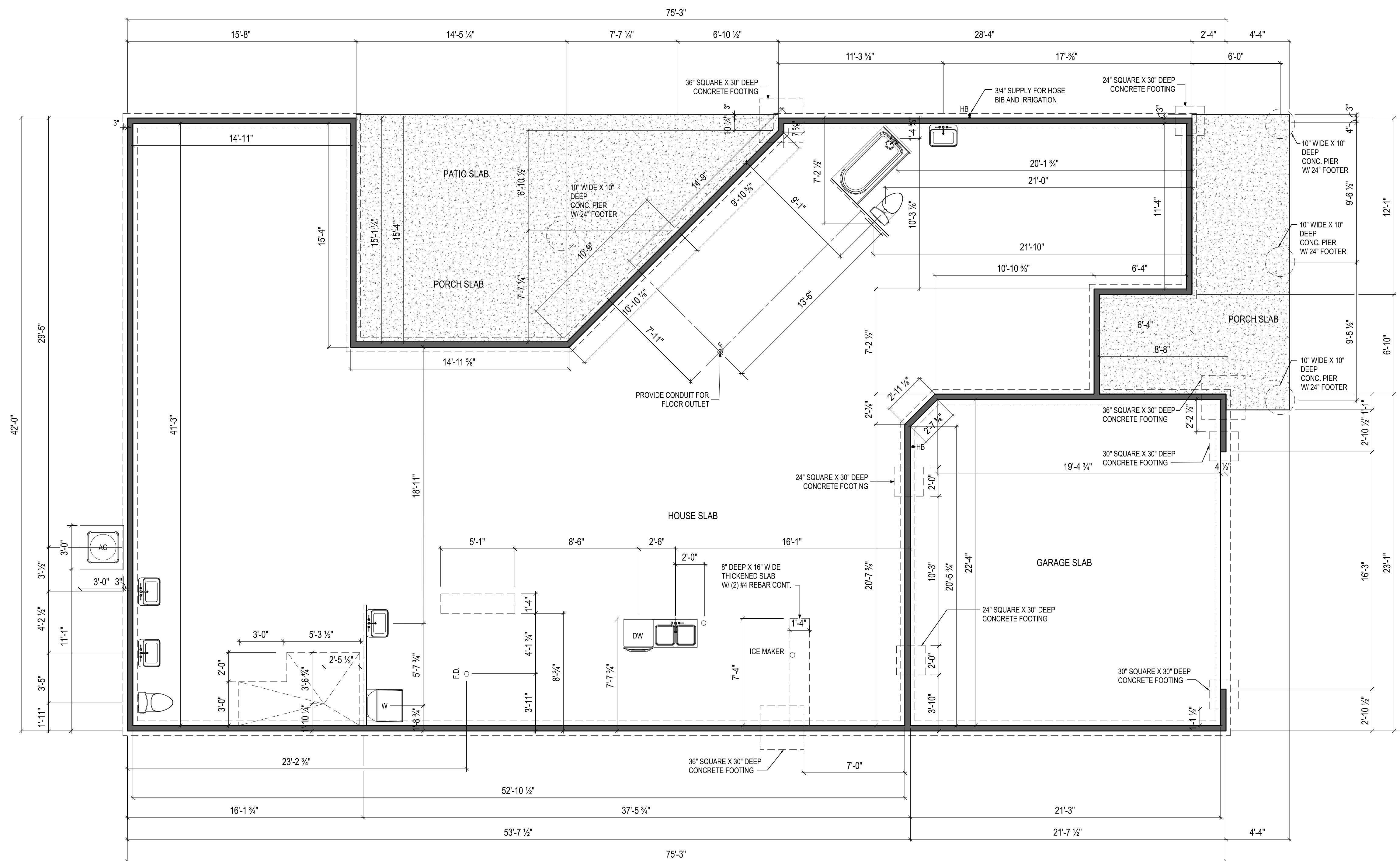
Irrigation system

Humidifier Valve

Softner Bypass system

Gas Furnace , Tankless Heater and Fireplace

Higharc, Inc. is not an architectural firm nor are the artistic representations contained herein intended to be construed as ready-to-use architectural plans, construction documents, drawings, renderings, or any other similar or related documents. All drawings are artist's representations only and solely intended to reflect design intent derived exclusively from the home building plans and associated information, data, and specifications provided by Epcon Foundation DG. Higharc, Inc. is not responsible, nor may it be held liable for any errors or omissions contained herein or resulting from its usage. Any usage of the representations should be reviewed by local professionals to ensure conformance with local and state codes and be field verified prior to the start of any construction.



NOTES:
THICKENED SLAB SHALL BE REINFORCED WITH CONTINUOUS (2) #4 REBAR

ISSUE	DESCRIPTION	DATE
01	BUILDER SET	8/6/2024

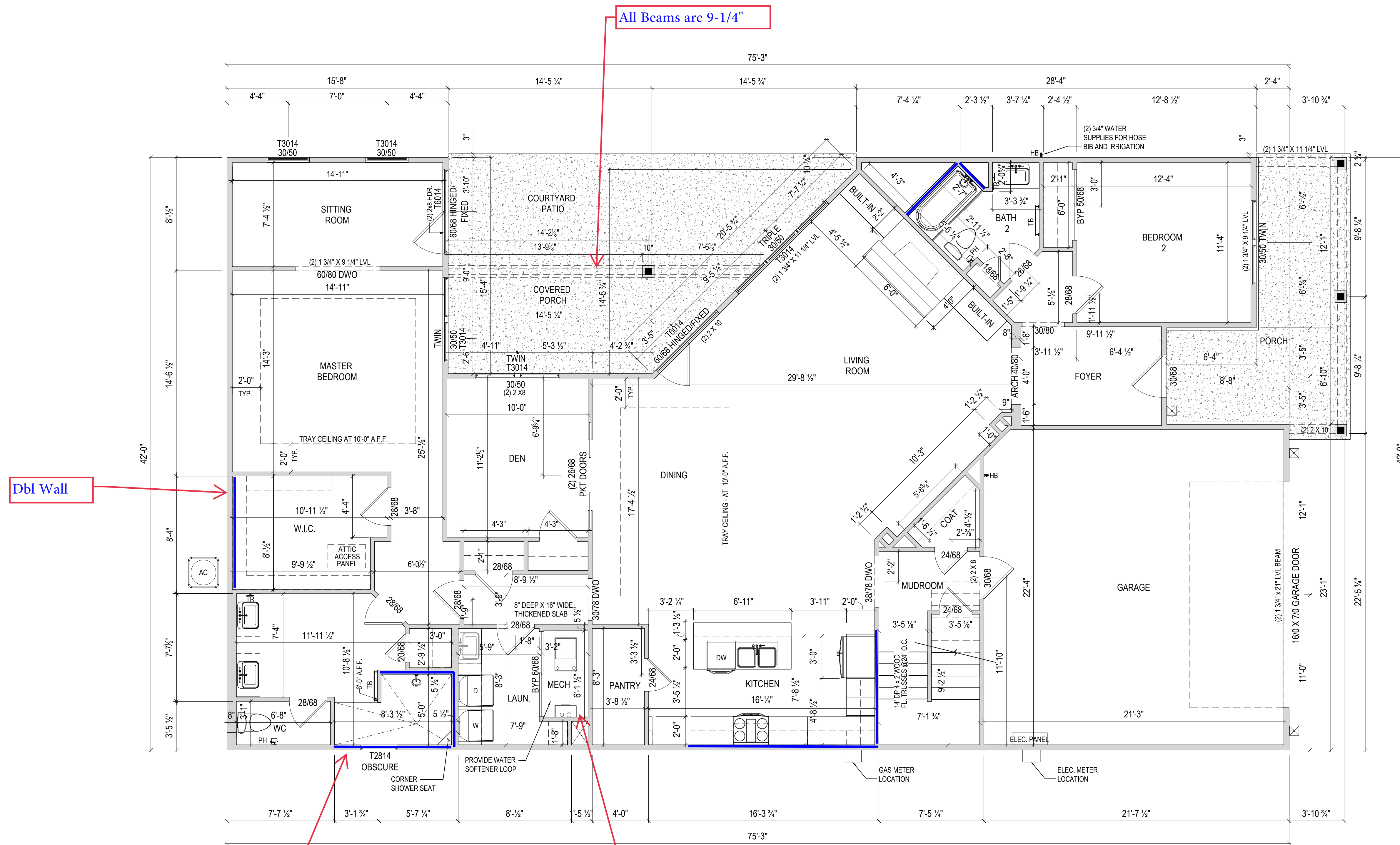
PROJECT
PLAN: BH Promenade Plus D4
ELEV: Elevation B
LOT: 126

DRAWING TITLE
FOUNDATION PLAN

SHEET NUMBER
A-050

NOT FOR CONSTRUCTION

Higharc, Inc. is not an architectural firm nor are the artistic representations contained herein intended to be construed as ready-to-use architectural plans, construction documents, drawings, renderings, or any other similar or related documents. All drawings are artist's representations only and solely intended to reflect design intent derived exclusively from the home building plans and associated information, data, and specifications provided by Epcon Foundation DG. Higharc, Inc. is not responsible, nor may it be held liable for any errors or omissions contained herein or resulting from its usage. Any usage of the representations should be reviewed by local professionals to ensure conformance with local and state codes and be field verified prior to the start of any construction.



Dbt Wall

Blocking at 36" AFF

Add OSB to ceiling after HVAC Rough

NOTES:
- ARCHED OPENINGS: SPRING POINT @ 78" A.F.F.
TOP OF ARCH 8'-6" ABOVE SPRING POINT.

ISSUE	DESCRIPTION	DATE
01	BUILDER SET	8/6/2024

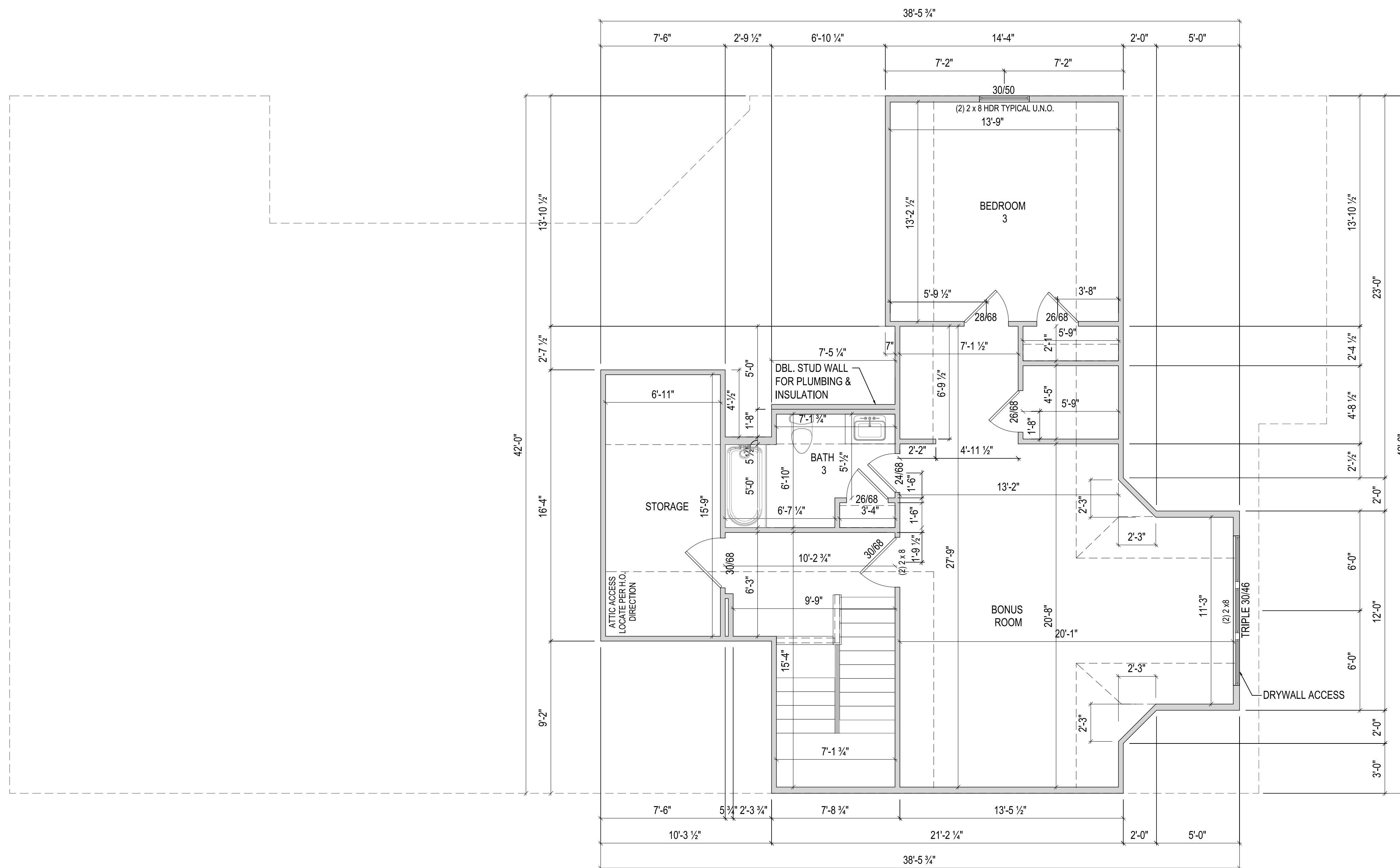
PROJECT
PLAN: BH Promenade Plus D4
ELEV: Elevation B
LOT: 126

FIRST FLOOR PLAN

SHEET NUMBER
A-101

NOT FOR CONSTRUCTION

Higharc, Inc. is not an architectural firm nor are the artistic representations contained herein intended to be construed as ready-to-use architectural plans, construction documents, drawings, renderings, or any other similar or related documents. All drawings are artist's representations only and solely intended to reflect design intent derived exclusively from the home building plans and associated information, data, and specifications provided by Epcon Foundation DG. Higharc, Inc. is not responsible, nor may it be held liable for any errors or omissions contained herein or resulting from its usage. Any usage of the representations should be reviewed by local professionals to ensure conformance with local and state codes and be field verified prior to the start of any construction.



ISSUE	DESCRIPTION	DATE
01	BUILDER SET	8/6/2024

PROJECT
 PLAN: BH Promenade Plus D4
 ELEV: Elevation B
 LOT: 126

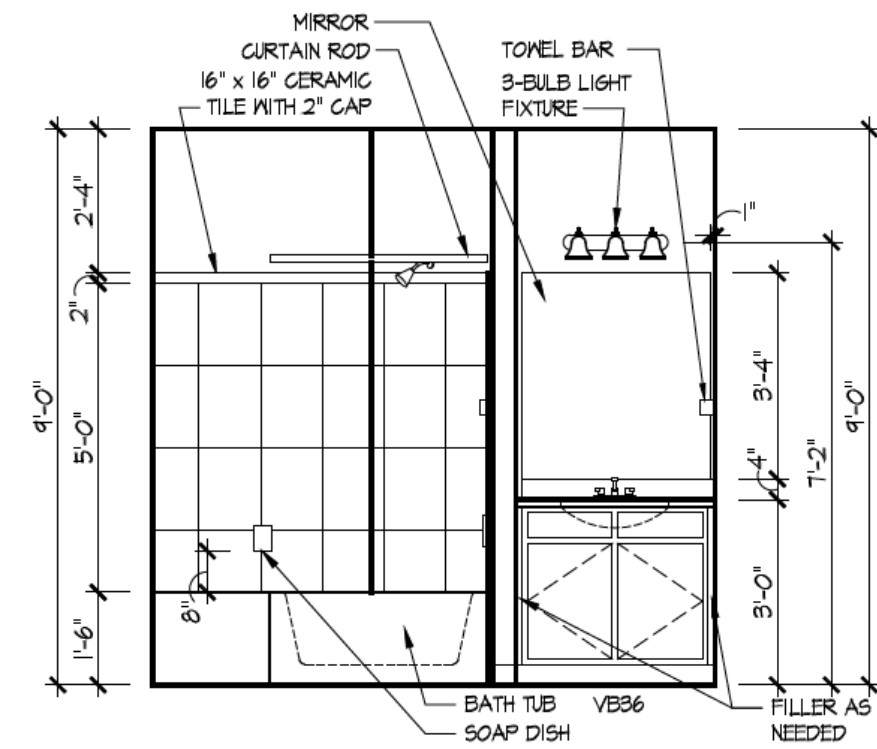
DRAWING TITLE
SECOND FLOOR PLAN

SHEET NUMBER
A-102

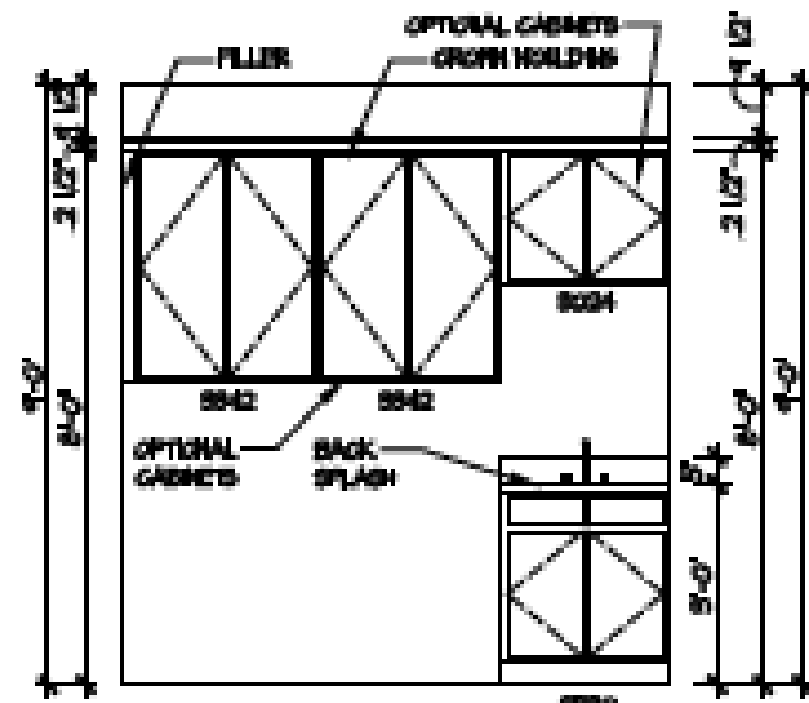
NOT FOR CONSTRUCTION

© 2024 HIGHARC, INC

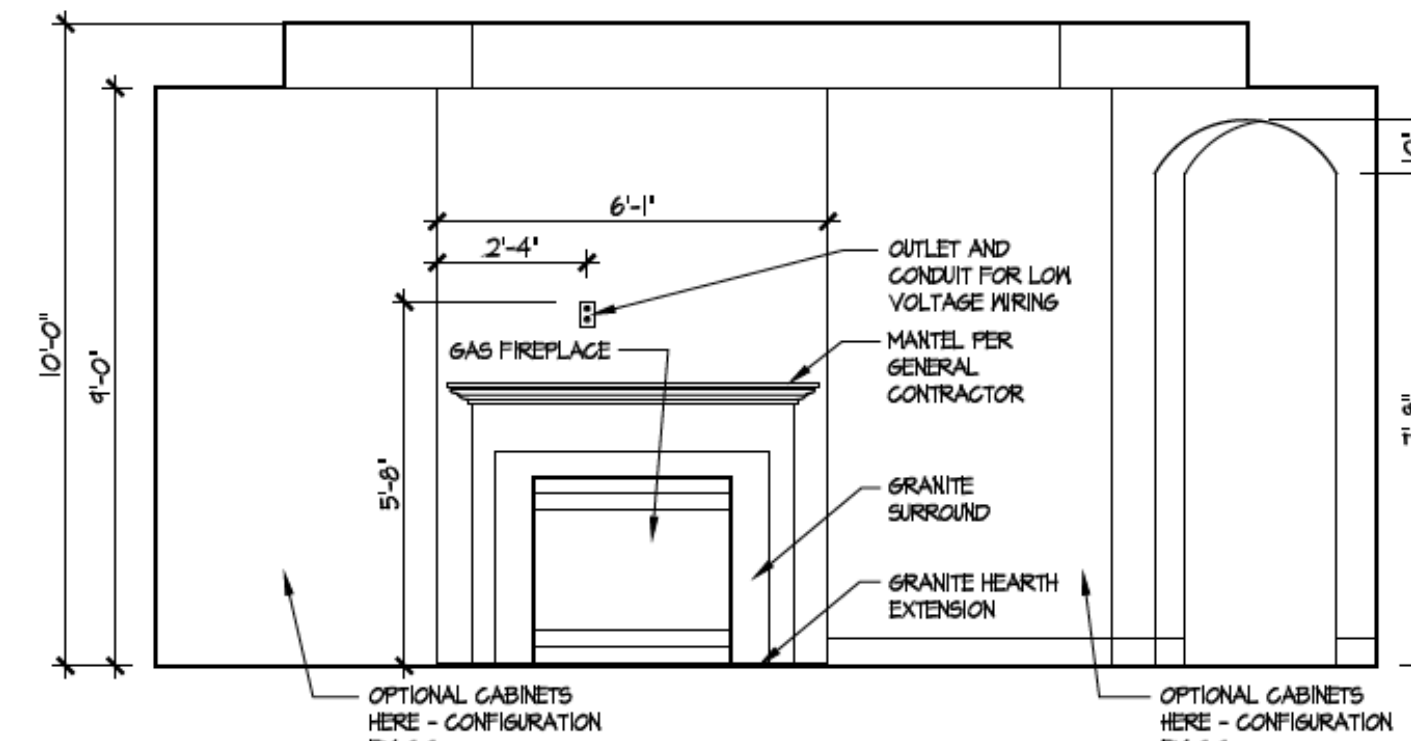
Higharc, Inc. is not an architectural firm nor are the artistic representations contained herein intended to be construed as ready-to-use architectural plans, construction documents, drawings, renderings, or any other similar or related documents. All drawings are artist's representations only and solely intended to reflect design intent derived exclusively from the home building plans and associated information, data, and specifications provided by Epcor Foundation DG. Higharc, Inc. is not responsible, nor may it be held liable for any errors or omissions contained herein or resulting from its usage. Any usage of the representations should be reviewed by local professionals to ensure conformance with local and state codes and be field verified prior to the start of any construction.



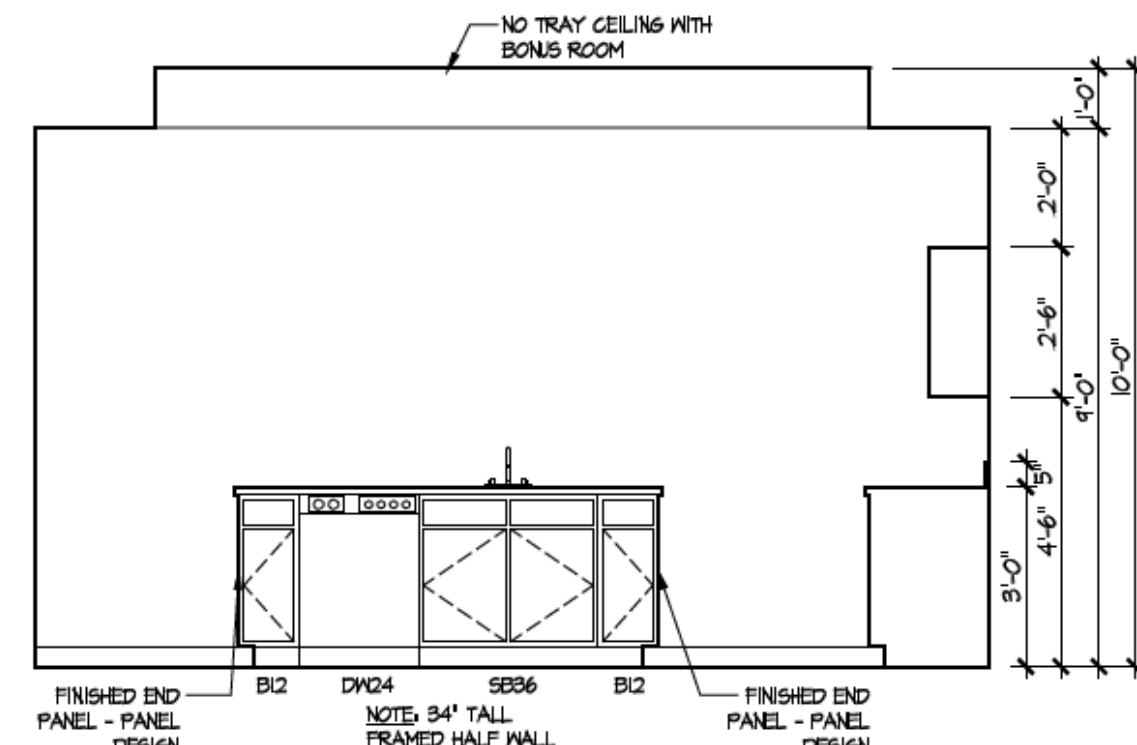
2 Bath 2 - Standard
A-402



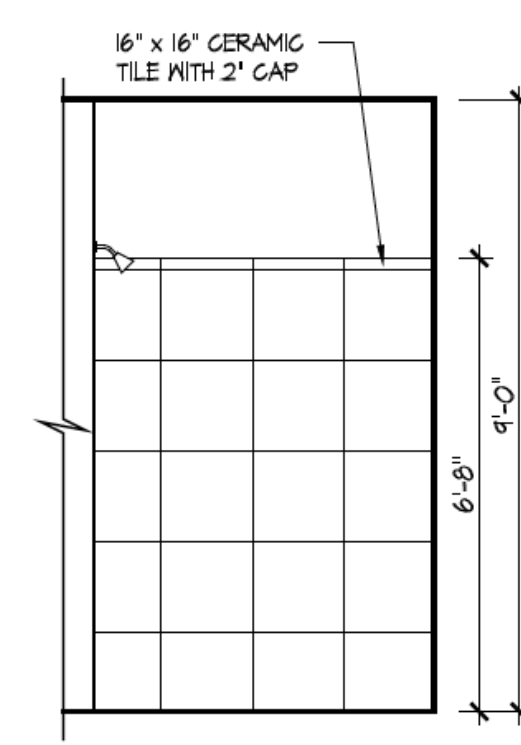
3 Deluxe Laundry
A-402



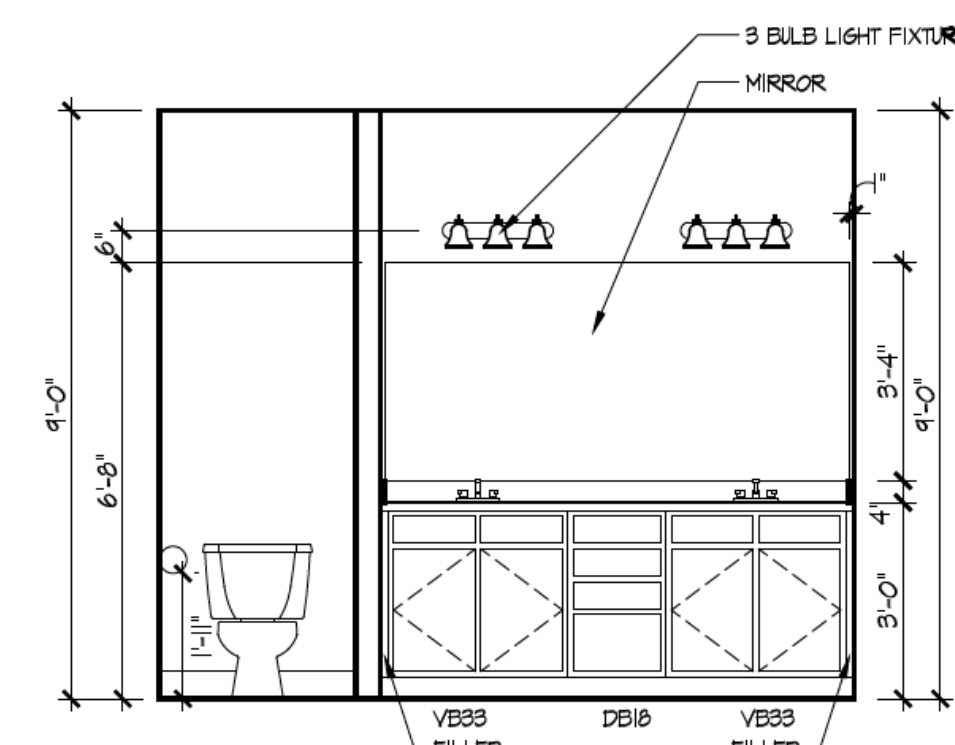
4 Fireplace
A-402



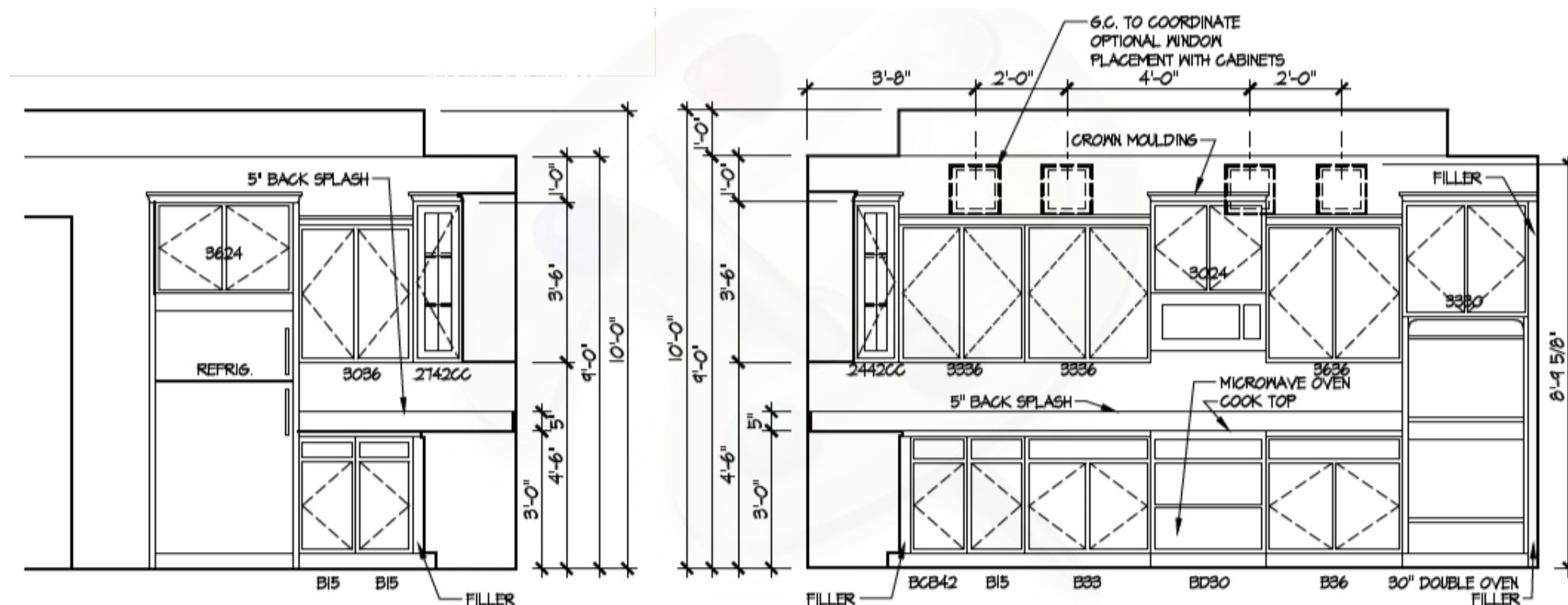
5 Kitchen - Island
A-402



6 Master Bath Shower - Walk-in
A-402



7 Master Bath Vanity
A-402



8 Kitchen Deluxe Layout
A-402

ISSUE	DESCRIPTION	DATE
01	BUILDER SET	8/6/2024

PROJECT
PLAN: BH Promenade Plus D4
ELEV: Elevation B
LOT: 126

DRAWING TITLE
DETAILS

SHEET NUMBER
A-402

NOT FOR CONSTRUCTION