

BH 143
4986 Rae Lane

2 story slab
1 large tankless heater
2 Hose bibs - no valves required
2 - tile shower drain
1 - RH tub
Irrigation system
Ice maker
Humidifier valve
Laundry Tub

Gas Furnace , Tankless Heater , Cooktop and Fireplace



BH 143

MASTER PLAN: Promenade Plus | ELEVATION: Elevation B | COMMUNITY: Bel Haven | LOT NUMBER: 143 | ADDRESS: 4986 Rae Lane, West Chester, Ohio 45069

PLANS POWERED BY HIGHARC

PROJECT SUMMARY	
BUILDING AREA	
CONDITIONED AREA	
FIRST FLOOR SF	2122 SF
SECOND FLOOR SF	930 SF
TOTAL CONDITIONED AREA :	3052 SF
TOTAL GARAGE AREA :	
	493 SF
FRONT PORCH AND PORTICO AREA :	176 SF
REAR PORCH AREA :	146 SF
PATIO AREA :	199 SF

GENERAL NOTES
ONLY LOCATION SPECIFIC OPTIONS ARE SHOWN ON THESE DRAWINGS. PLEASE REFER TO OPTION SUMMARY AND/OR PURCHASE ORDERS FOR A COMPLETE LISTING OF OPTIONS.
DESIGN CRITERIA:
NUMBER OF STORIES: 2
BUILDING WIDTH: 42'-3"
BUILDING DEPTH: 79'-7"
BUILDING HEIGHT: 23'-4 1/2"
GOVERNMENTAL CODES AND STANDARDS
HOME TO BE BUILT TO CONFORM TO ALL APPLICABLE LOCAL CODES, PRACTICES AND STANDARDS.
BUILDING CODE ANALYSIS / DESIGN CRITERIA
HOME TO BE BUILT TO 2019 RESIDENTIAL CODE OF OHIO STANDARDS

GRAPHIC SYMBOLS & LEGEND	
	ELEVATION MARKER
	ROOF SLOPE
	SD
	SD / CO

SHEET INDEX	
COVER	A-000
SCHEDULES	A-010
GENERAL NOTES	A-020
FOUNDATION PLAN	A-050
FIRST FLOOR PLAN	A-101
SECOND FLOOR PLAN	A-102
ROOF PLAN	A-120
FRONT / BACK ELEVATION	A-200
LEFT / RIGHT ELEVATION	A-201
DETAILS	A-401
DETAILS	A-402
DETAILS	A-403
DETAILS	A-404
DETAILS	A-405
PERSPECTIVE VIEWS	A-900
FIRST FLOOR ELECTRICAL PLAN	E-101
SECOND FLOOR ELECTRICAL PLAN	E-102
SHEAR WALL PLAN	S-100
SHEAR WALL DETAILS	S-101



Epcon Foundation DG

Bel Haven LLC
West Chester, OH.

Higharc, Inc. is not an architectural firm nor are the artistic representations contained herein intended to be construed as ready-to-use architectural plans, construction documents, drawings, renderings, or any other similar or related documents. All drawings are artist's representations only and solely intended to reflect design intent derived exclusively from the home building plans and associated information, data, and specifications provided by Epcon Foundation DG. Higharc, Inc. is not responsible, nor may it be held liable for any errors or omissions contained herein or resulting from its usage. Any usage of the representations should be reviewed by local professionals to ensure conformance with local and state codes and be field verified prior to the start of any construction.

ISSUE	DESCRIPTION	DATE
01	BUILDER SET	12/13/2024

PROJECT

PLAN: BH Promenade Plus D4

ELEV: Elevation B

LOT: 143

DRAWING TITLE

COVER

SHEET NUMBER

A-000

NOT FOR CONSTRUCTION

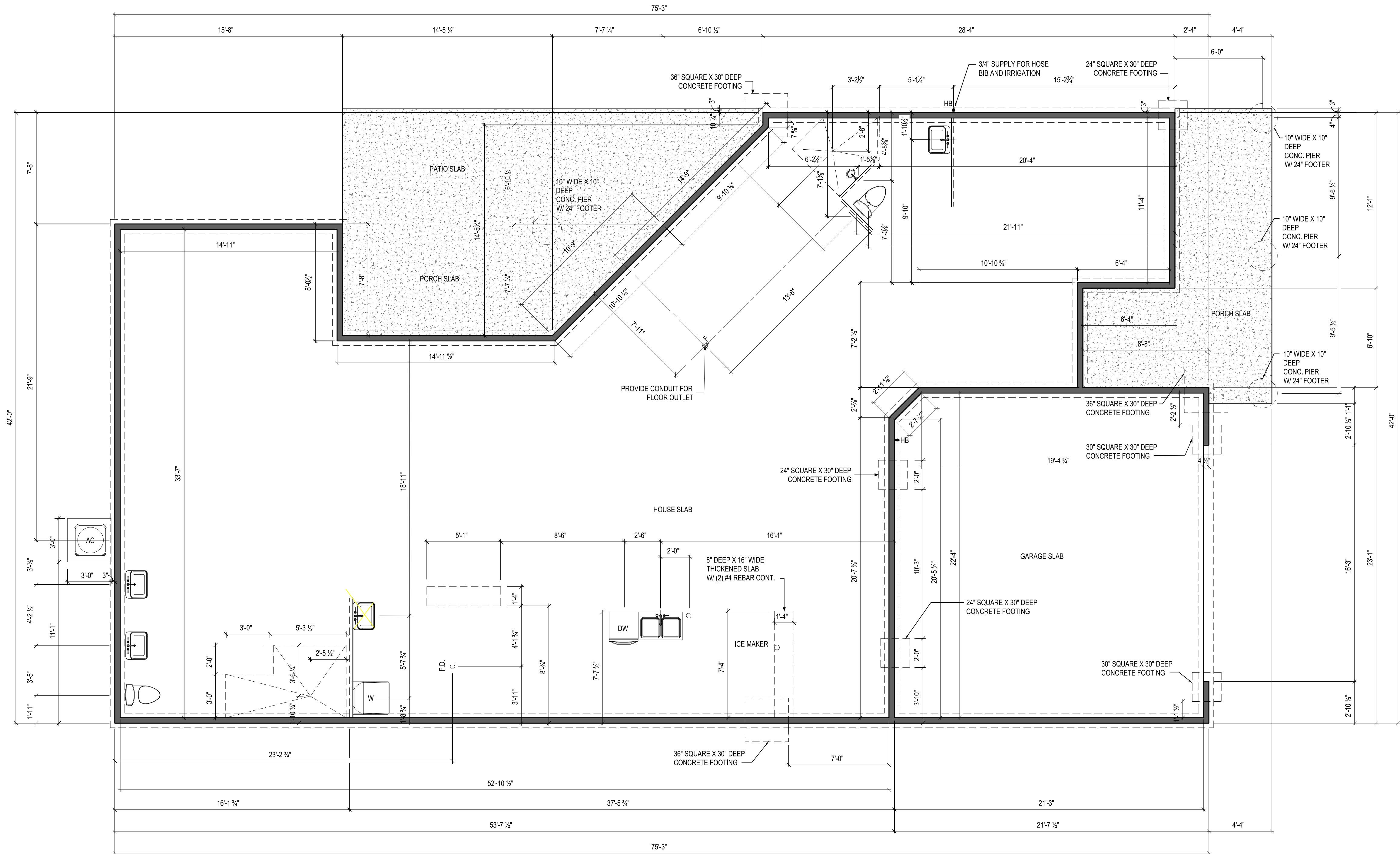
© 2024 HIGHARC, INC.



Epcon Foundation DG

Bel Haven LLC
West Chester, OH.

Higharc, Inc. is not an architectural firm nor are the artistic representations contained herein intended to be construed as ready-to-use architectural plans, construction documents, drawings, renderings, or any other similar or related documents. All drawings are artist's representations only and solely intended to reflect design intent derived exclusively from the home building plans and associated information, data, and specifications provided by Epcon Foundation DG. Higharc, Inc. is not responsible, nor may it be held liable for any errors or omissions contained herein or resulting from its usage. Any usage of the representations should be reviewed by local professionals to ensure conformance with local and state codes and be field verified prior to the start of any construction.



NOTES:
THICKENED SLAB SHALL BE REINFORCED
WITH CONTINUOUS (2) #4 REBAR

ISSUE	DESCRIPTION	DATE
01	BUILDER SET	12/13/2024

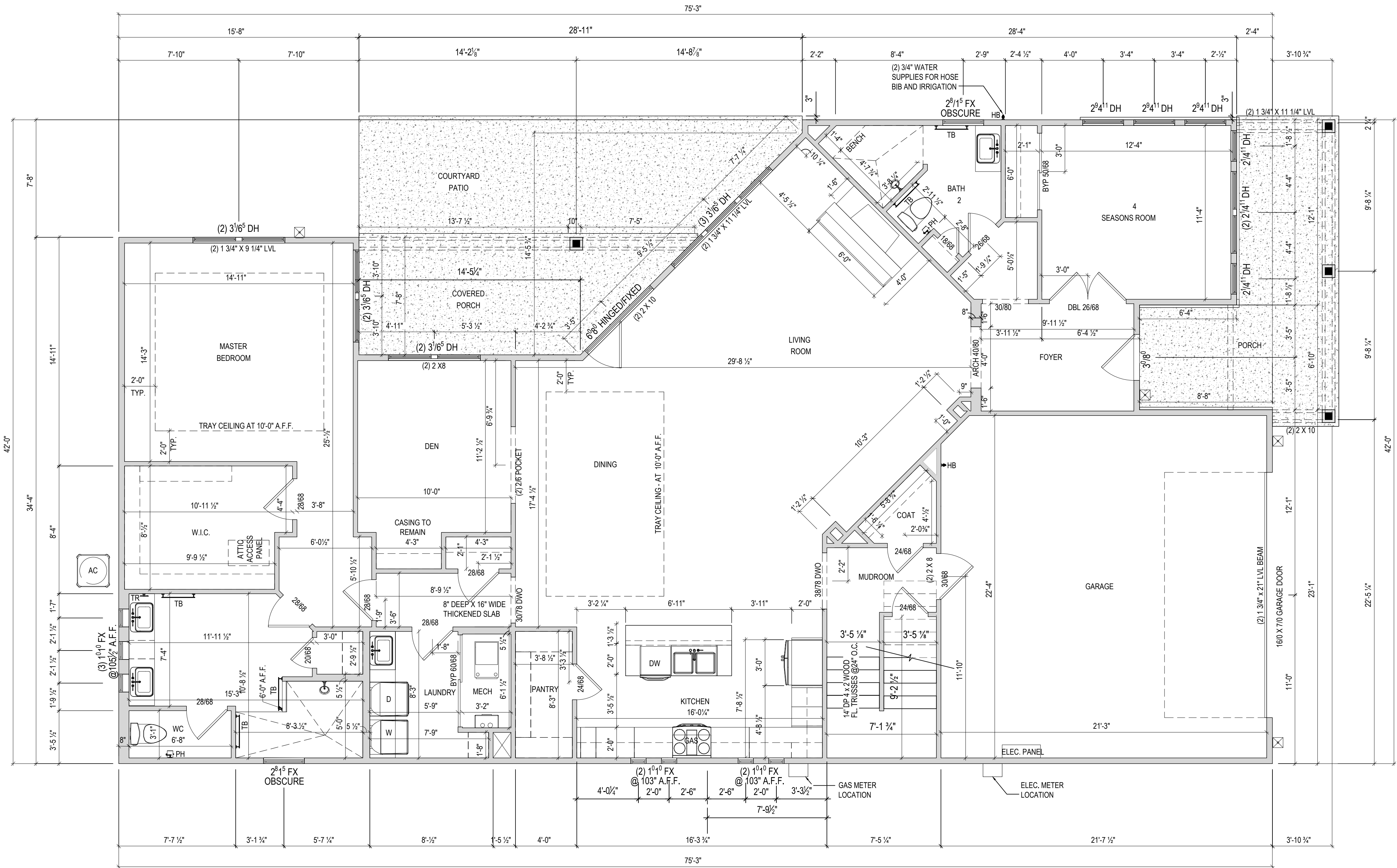
PROJECT
PLAN: BH Promenade Plus D4
ELEV: Elevation B
LOT: 143

DRAWING TITLE
FOUNDATION PLAN

SHEET NUMBER
A-050

NOT FOR CONSTRUCTION

© 2024 HIGHARC, INC.



- NOTES:
- 1.) ARCHED OPENINGS: SPRING POINT @ 7" A.A.F. TOP OF ARCH 8'-6" ABOVE SPRING POINT.
 - 2.) WINDOWS R.O. HEAD HEIGHT TO BE 8'-0" A.F.F. U.N.O.
 - 3.) DISTANCE BETWEEN GROUPED WINDOWS SHALL BE 4'-1/2".



EPCON[®]
COMMUNITIES

Epcon Foundation DG

Bel Haven LLC
West Chester, OH.

Higharc, Inc. is not an architectural firm nor are the artistic representations contained herein intended to be construed as ready-to-use architectural plans, construction documents, drawings, renderings, or any other similar or related documents. All drawings are artist's representations only and solely intended to reflect design intent derived exclusively from the home building plans and associated information, data, and specifications provided by Epcon Foundation DG. Higharc, Inc. is not responsible, nor may it be held liable for any errors or omissions contained herein or resulting from its usage. Any usage of the representations should be reviewed by local professionals to ensure conformance with local and state codes and be field verified prior to the start of any construction.

ISSUE	DESCRIPTION	DATE
01	BUILDER SET	12/13/2024

PROJECT

PLAN: BH Promenade Plus D4
ELEV: Elevation B
LOT: 143

DRAWING TITLE

FIRST FLOOR
PLAN

SHEET NUMBER

A-101

NOT FOR CONSTRUCTION

© 2024 HIGHARC, INC.

1

FLOOR PLAN

A-101

1/8" = 1'-0" @ 11" x 17"

Higharc, Inc. is not an architectural firm nor are the artistic representations contained herein intended to be construed as ready-to-use architectural plans, construction documents, drawings, renderings, or any other similar or related documents. All drawings are artist's representations only and solely intended to reflect design intent derived exclusively from the home building plans and associated information, data, and specifications provided by Epcon Foundation DG. Higharc, Inc. is not responsible, nor may it be held liable for any errors or omissions contained herein or resulting from its usage. Any usage of the representations should be reviewed by local professionals to ensure conformance with local and state codes and be field verified prior to the start of any construction.

ISSUE	DESCRIPTION	DATE
01	BUILDER SET	12/13/2024

PROJECT

PLAN: BH Promenade Plus D4

ELEV: Elevation B

LOT: 143

DRAWING TITLE

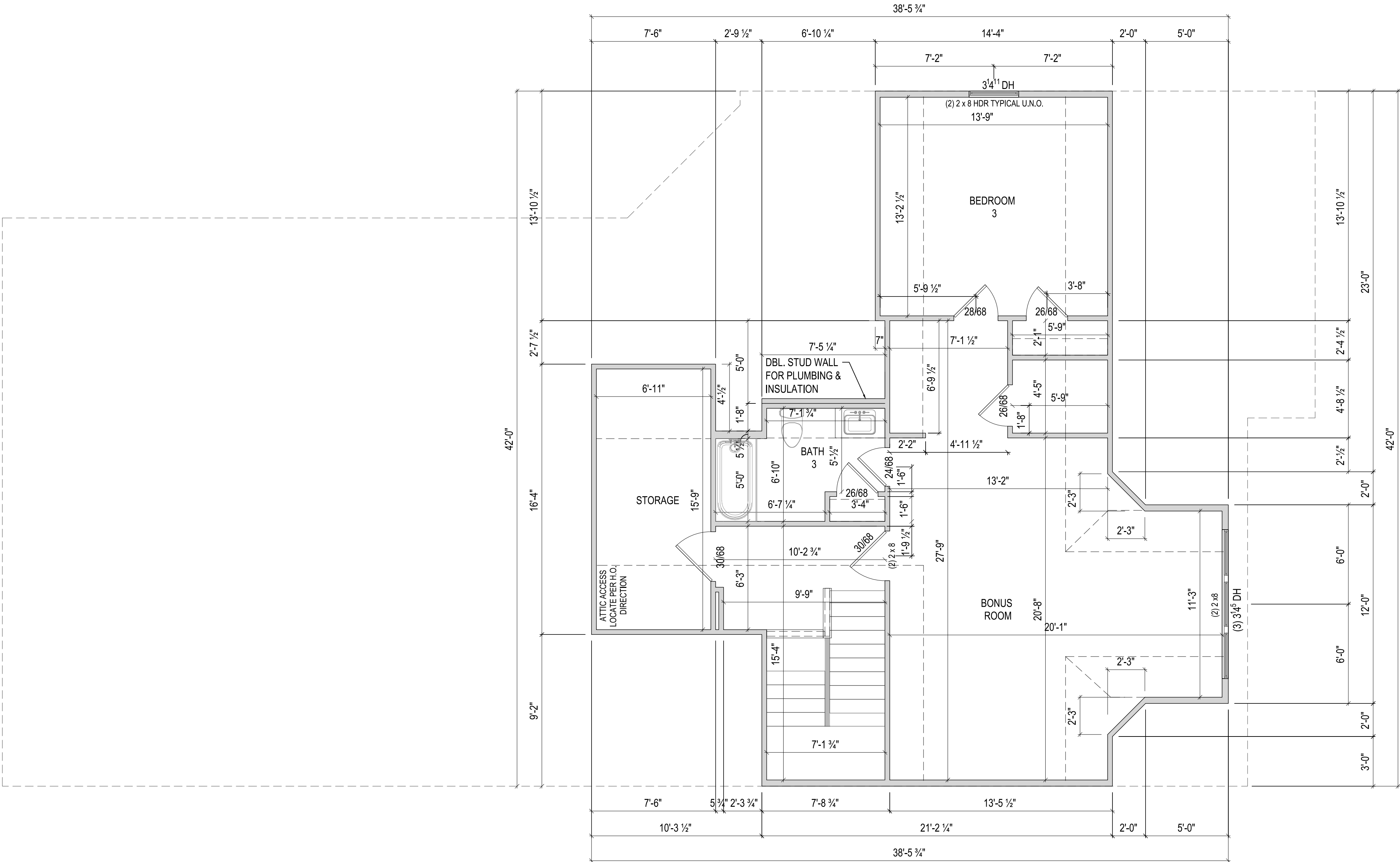
SECOND FLOOR
PLAN

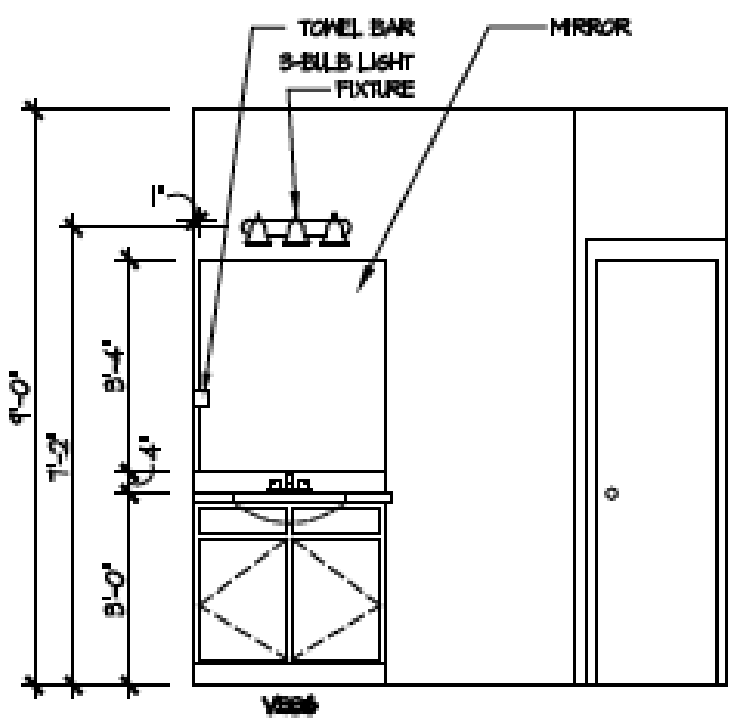
SHEET NUMBER

A-102

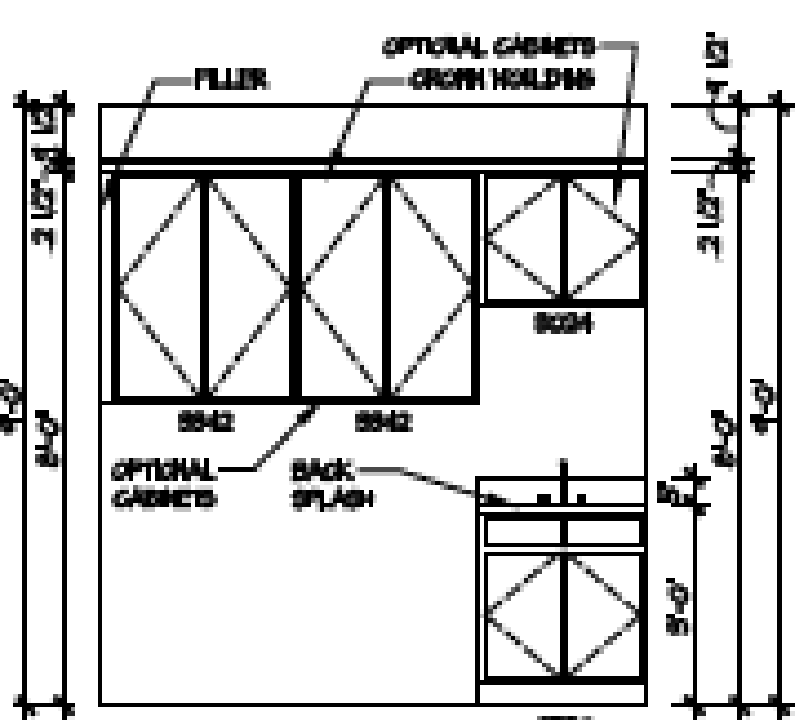
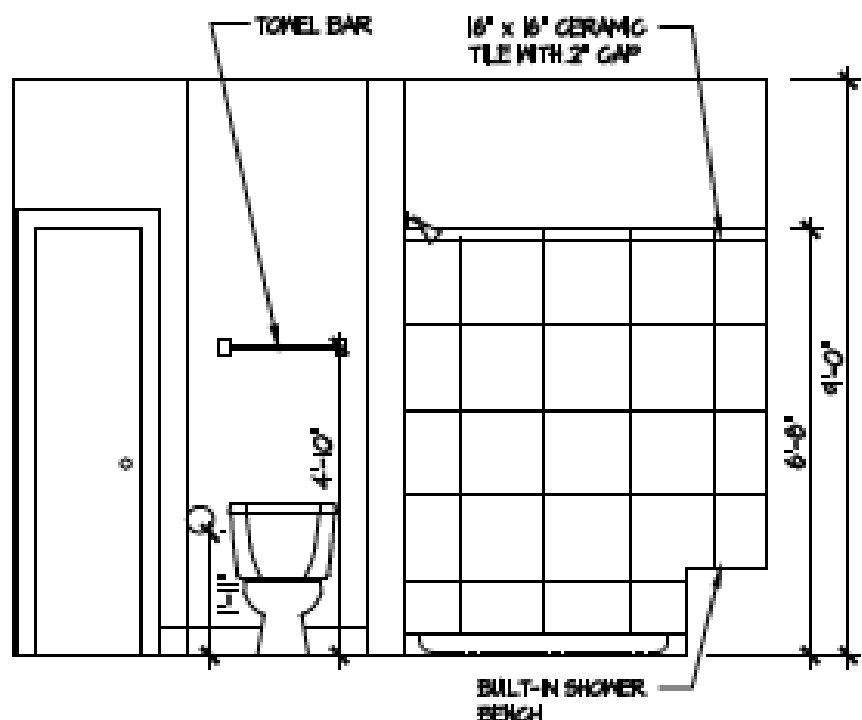
NOT FOR CONSTRUCTION

© 2024 HIGHARC, INC.

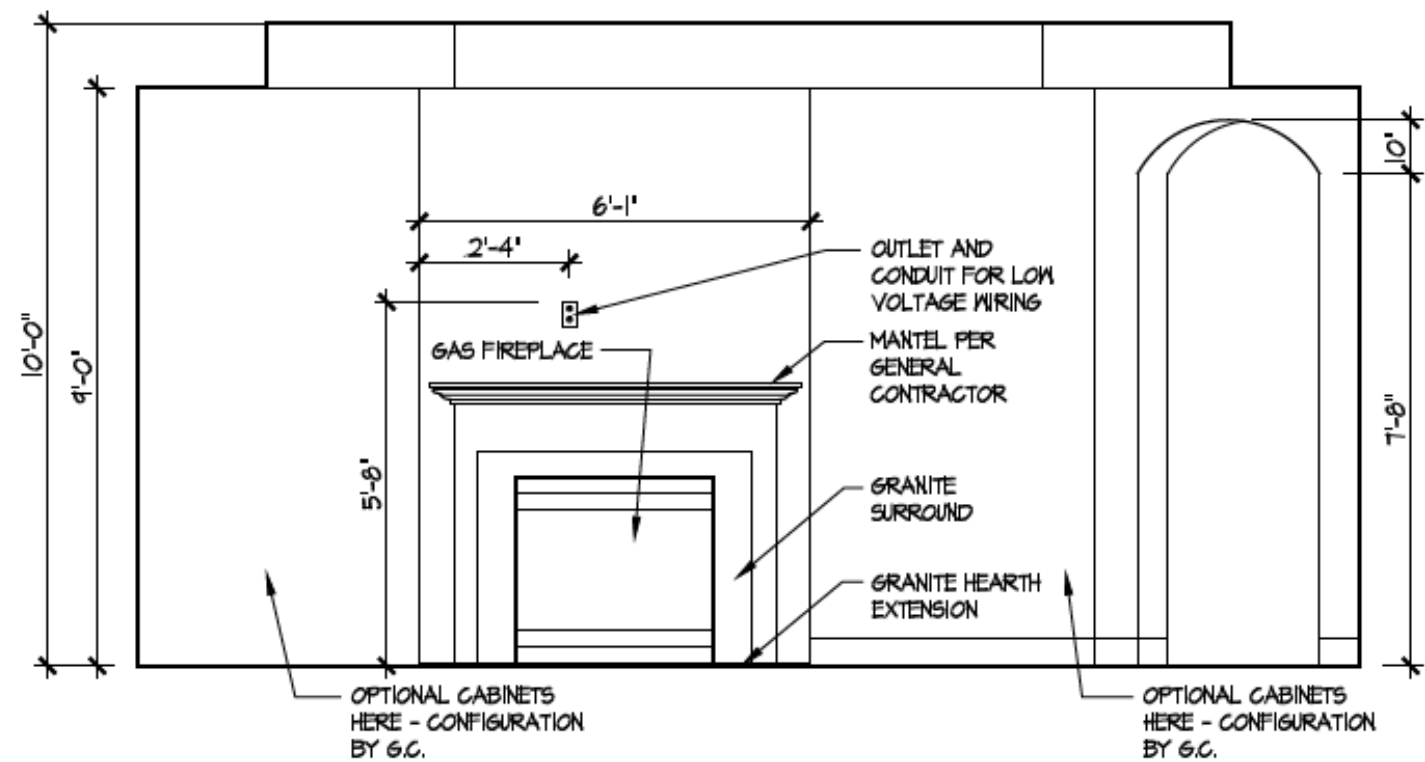




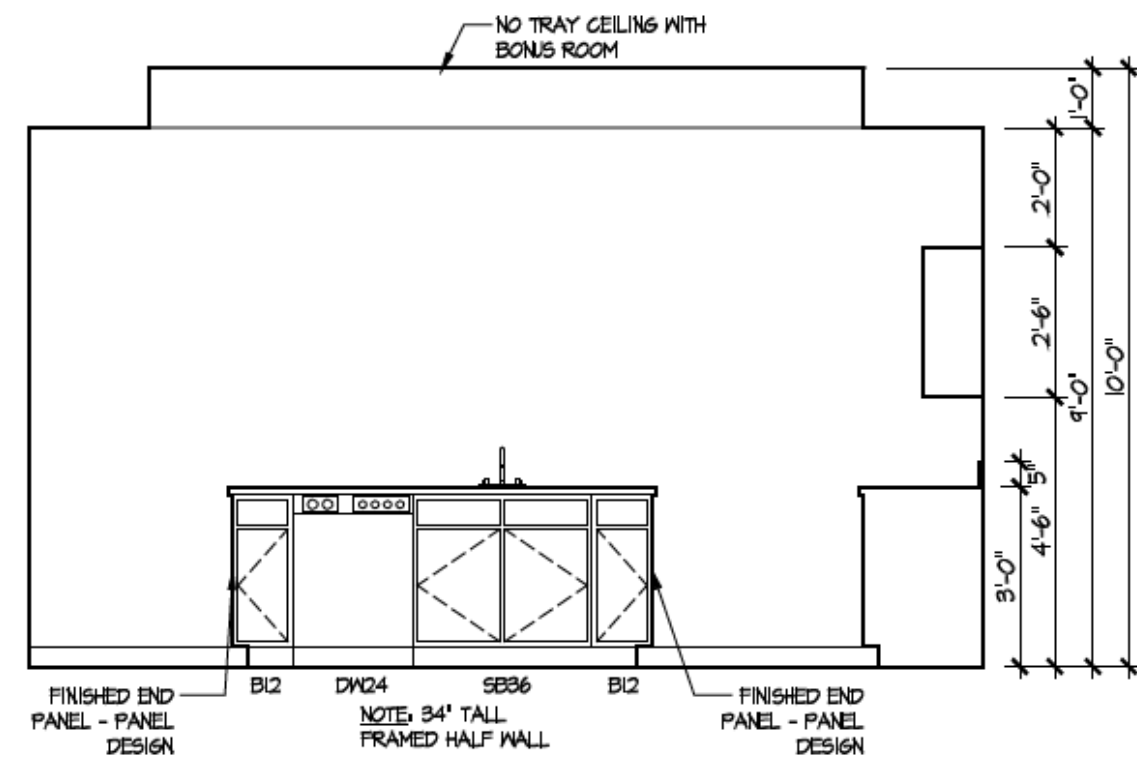
2 Bath 2 - Walk-in Shower
A-402



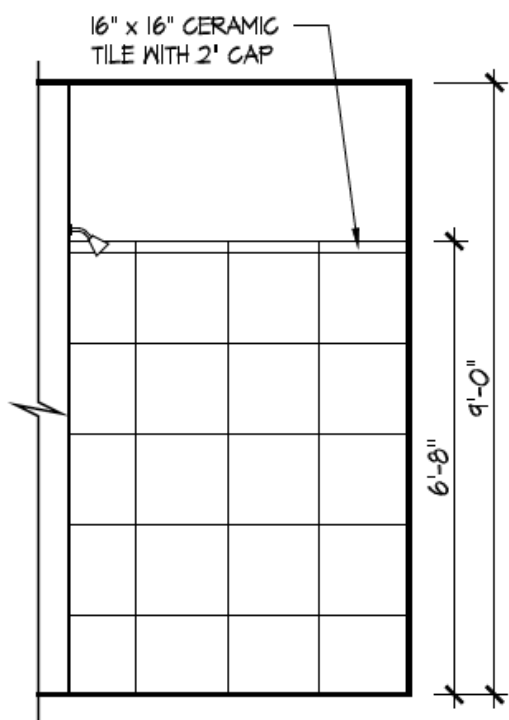
3 Deluxe Laundry
A-402



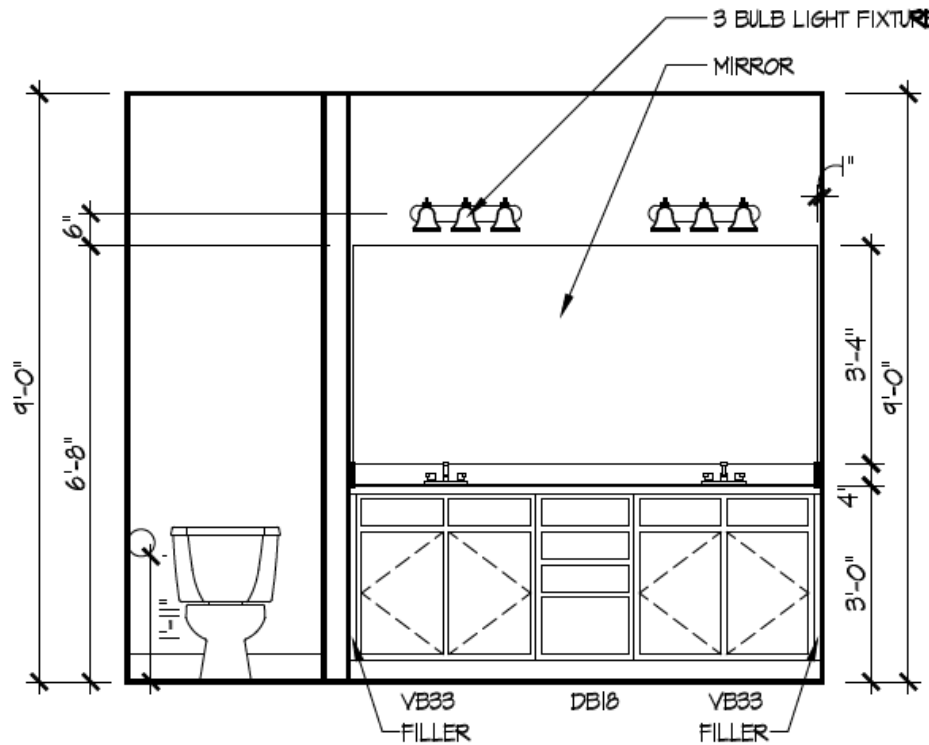
4 Fireplace
A-402



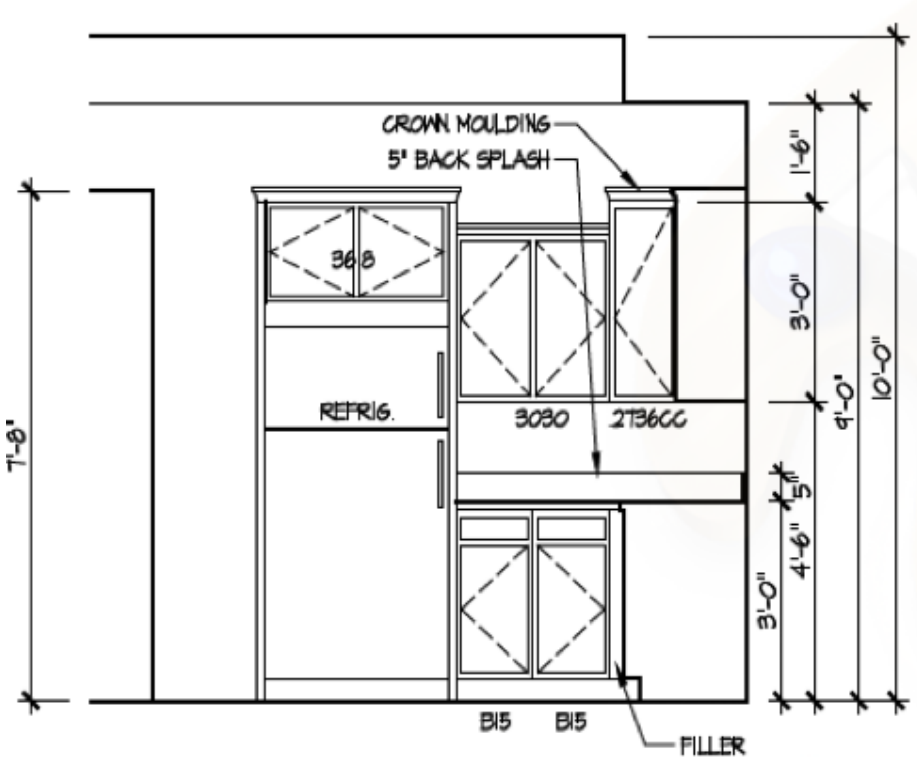
5 Kitchen - Island
A-402



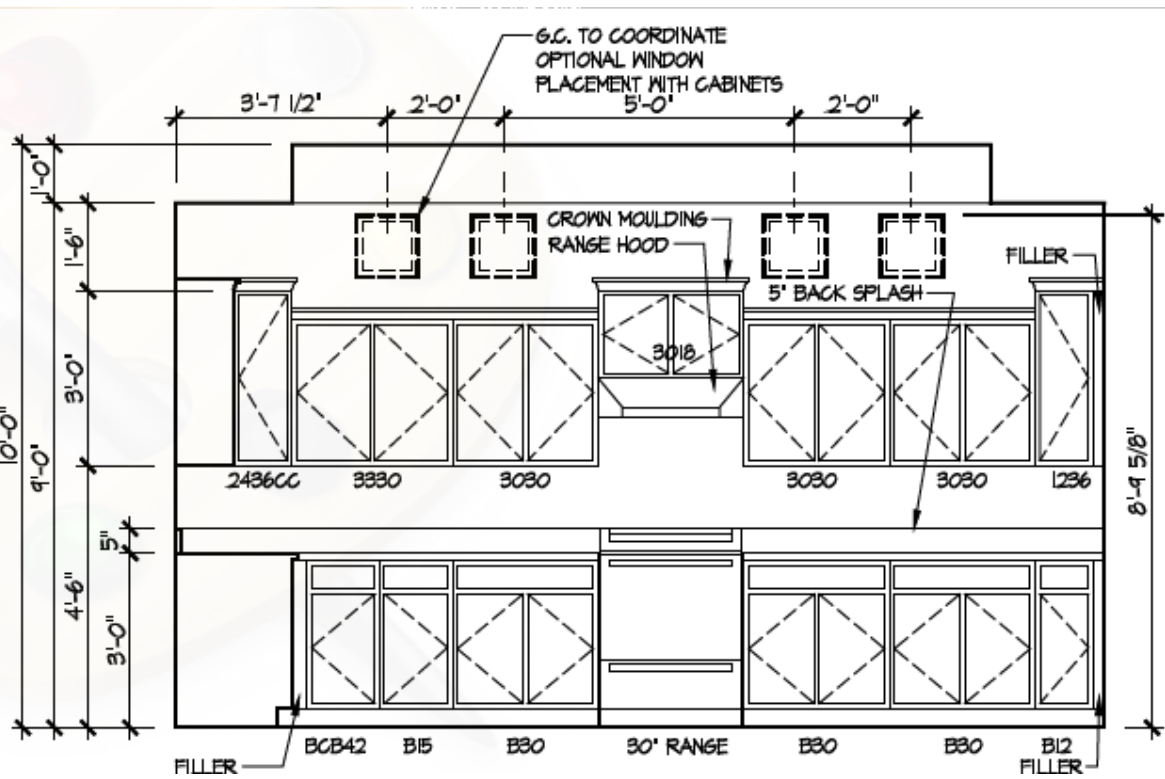
6 Master Bath Shower - Walk-in
A-402



7 Master Bath Vanity
A-402



8 Kitchen Staggered Layout
A-402



Higharc, Inc. is not an architectural firm nor are the artistic representations contained herein intended to be construed as ready-to-use architectural plans, construction documents, drawings, renderings, or any other similar or related documents. All drawings are artist's representations only and solely intended to reflect design intent derived exclusively from the home building plans and associated information, data, and specifications provided by Epcor Foundation DG. Higharc, Inc. is not responsible, nor may it be held liable for any errors or omissions contained herein or resulting from its usage. Any usage of the representations should be reviewed by local professionals to ensure conformance with local and state codes and be field verified prior to the start of any construction.

ISSUE	DESCRIPTION	DATE
01	BUILDER SET	12/13/2024

PROJECT
PLAN: BH Promenade Plus D4
ELEV: Elevation B
LOT: 143

DRAWING TITLE
DETAILS

SHEET NUMBER
A-402

NOT FOR CONSTRUCTION