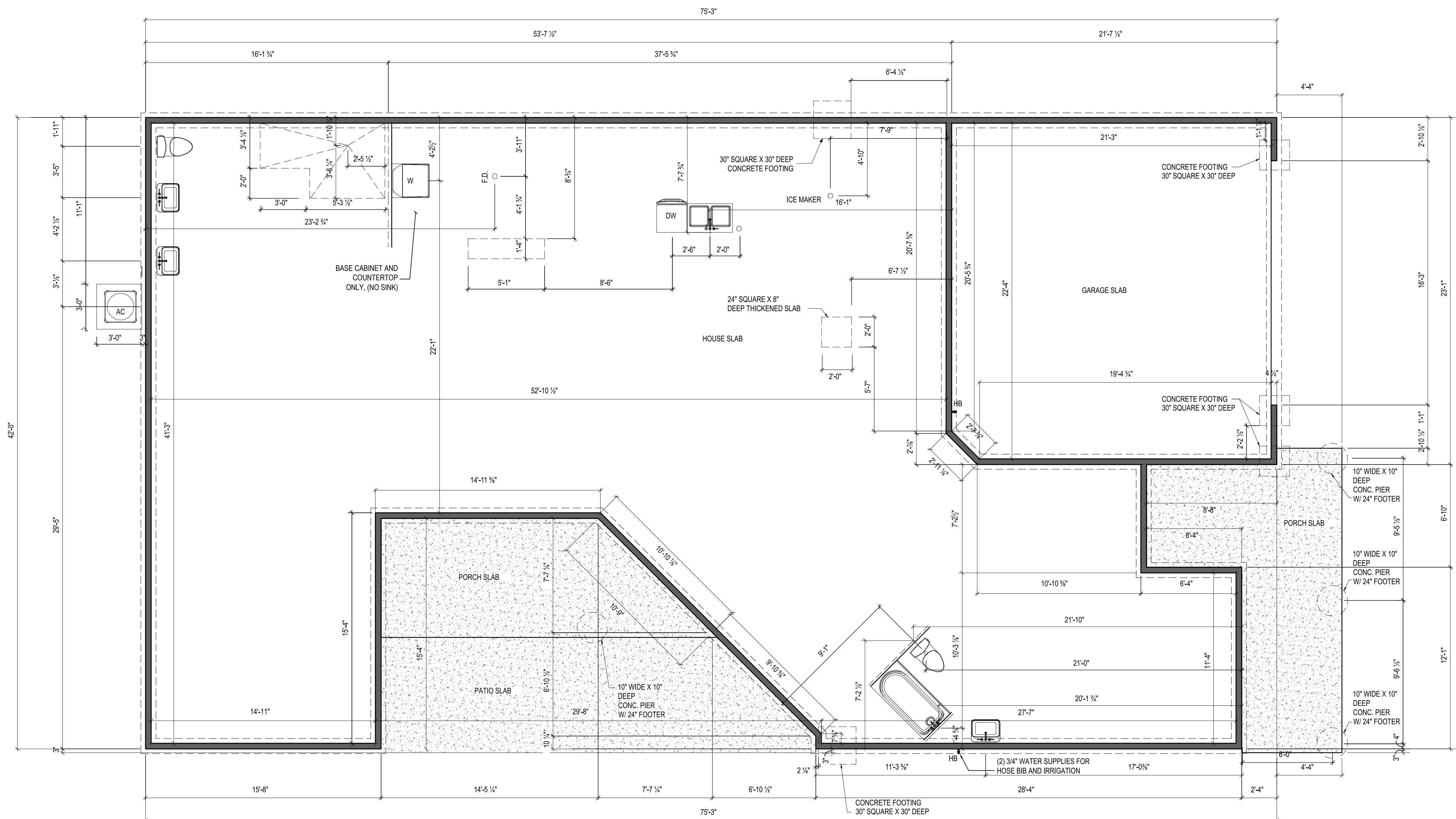


BH 160  
4983 Rae Lane

1 story slab  
1 small tankless heater  
2 Hose bibs - no valves required  
1 - tile shower drain  
1 - LH tub  
Irrigation system  
Ice maker  
Humidifier valve

Gas Furnace , Tankless Heater , Fireplace and Range

Higharc, Inc. is not an architectural firm nor are the artistic representations contained herein intended to be construed as ready-to-use architectural plans, construction documents, drawings, renderings, or any other similar or related documents. All drawings are artist's representations only and solely intended to reflect design intent derived exclusively from the home building plans and associated information, data, and specifications provided by Epcon Foundation DG. Higharc, Inc. is not responsible, nor may it be held liable for any errors or omissions contained herein or resulting from its usage. Any usage of the representations should be reviewed by local professionals to ensure conformance with local and state codes and be field verified prior to the start of any construction.



NOTES:  
THICKENED SLAB SHALL BE REINFORCED  
WITH CONTINUOUS (2) #4 REBAR

ISSUE	DESCRIPTION	DATE
01	BUILDER SET	2/17/2025

PROJECT  
PLAN: BH Promenade Plus D4  
ELEV: Elevation B  
LOT: 160

DRAWING TITLE  
**FOUNDATION PLAN**

SHEET NUMBER  
**A-050**

- NOTES:
- 1.) ARCHED OPENINGS: SPRING POINT @ 7" A.A.F. TOP OF ARCH 8'-6" ABOVE SPRING POINT.
  - 2.) WINDOWS R.O. HEAD HEIGHT TO BE 8'-0" A.F.F. U.N.O.
  - 3.) DISTANCE BETWEEN GROUPED WINDOWS SHALL BE 4'-1/2".

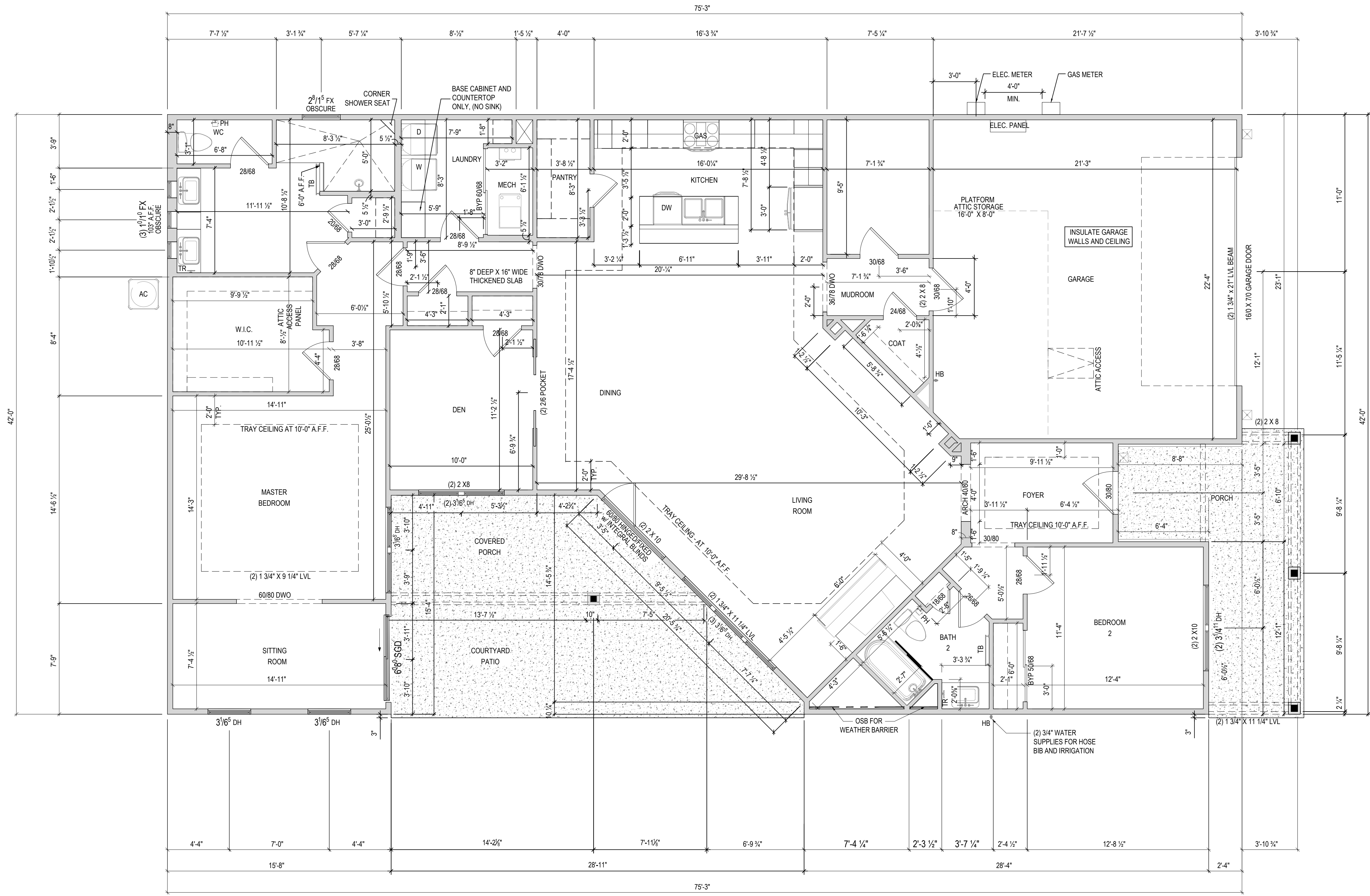


**EPCON**  
COMMUNITIES

Epcor Foundation DG

Bel Haven LLC  
West Chester, OH.

Higharc, Inc. is not an architectural firm nor are the artistic representations contained herein intended to be construed as ready-to-use architectural plans, construction documents, drawings, renderings, or any other similar or related documents. All drawings are artist's representations only and solely intended to reflect design intent derived exclusively from the home building plans and associated information, data, and specifications provided by Epcor Foundation DG. Higharc, Inc. is not responsible, nor may it be held liable for any errors or omissions contained herein or resulting from its usage. Any usage of the representations should be reviewed by local professionals to ensure conformance with local and state codes and be field verified prior to the start of any construction.



ISSUE	DESCRIPTION	DATE
01	BUILDER SET	2/17/2025

PROJECT  
PLAN: BH Promenade Plus D4  
ELEV: Elevation B  
LOT: 160

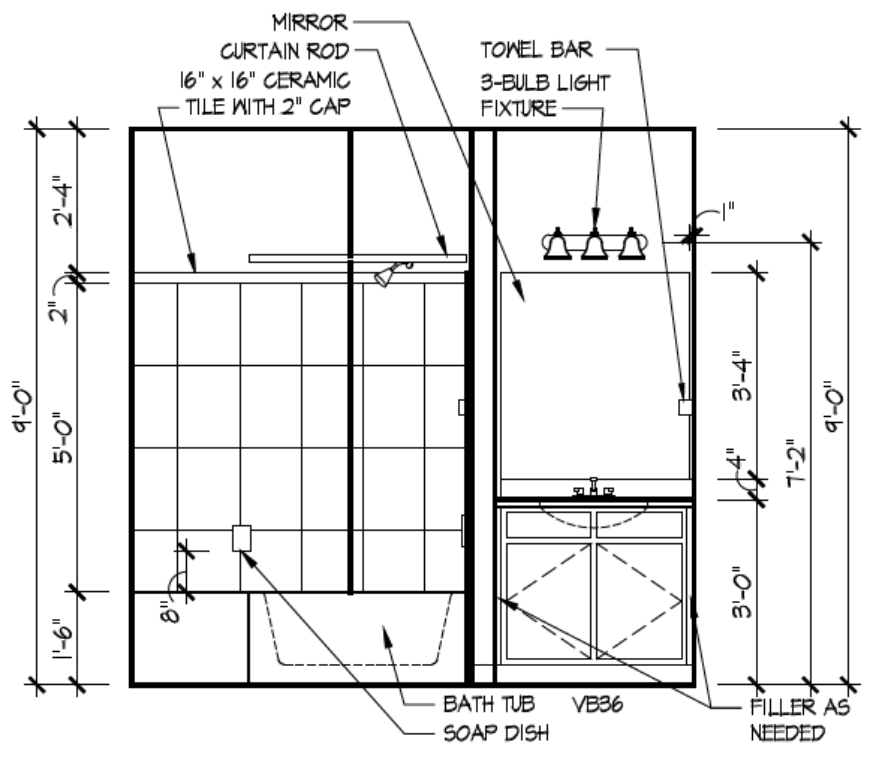
DRAWING TITLE  
**FIRST FLOOR PLAN**

SHEET NUMBER  
**A-101**

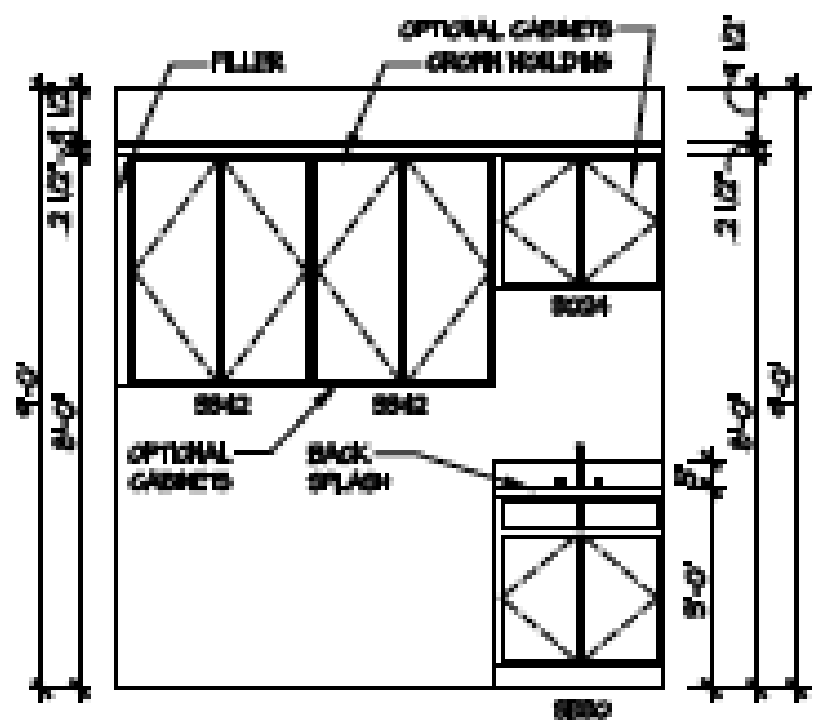


Epcon Foundation DG  
Bel Haven LLC  
West Chester, OH.

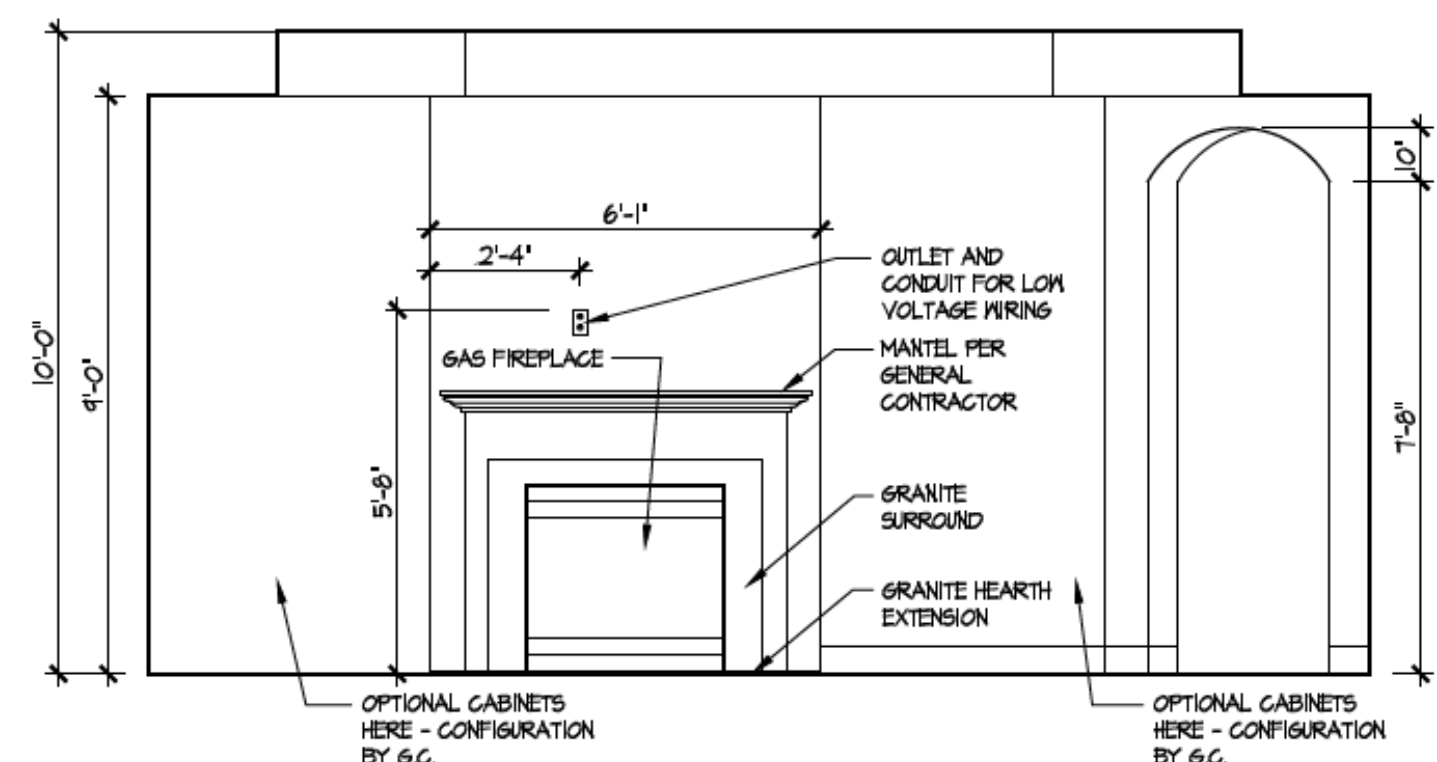
Higharc, Inc. is not an architectural firm nor are the artistic representations contained herein intended to be construed as ready-to-use architectural plans, construction documents, drawings, renderings, or any other similar or related documents. All drawings are artist's representations only and solely intended to reflect design intent derived exclusively from the home building plans and associated information, data, and specifications provided by Epcon Foundation DG. Higharc, Inc. is not responsible, nor may it be held liable for any errors or omissions contained herein or resulting from its usage. Any usage of the representations should be reviewed by local professionals to ensure conformance with local and state codes and be field verified prior to the start of any construction.



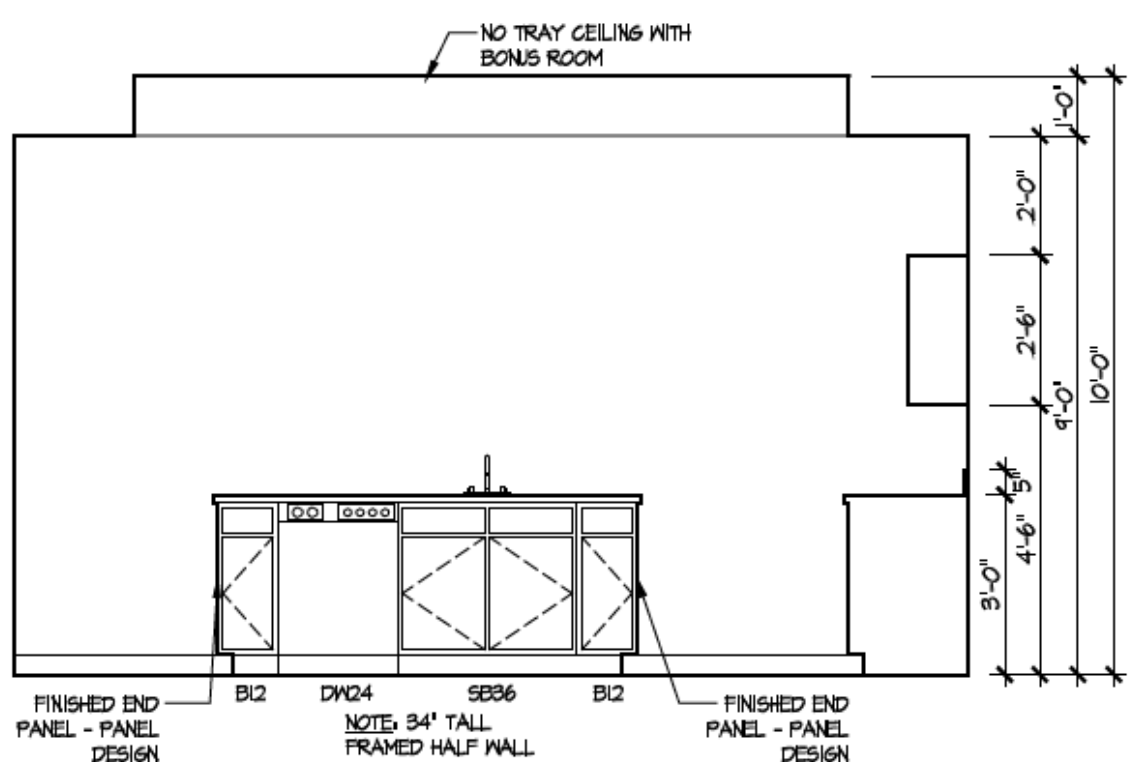
2 Bath 2 - Standard  
A-402



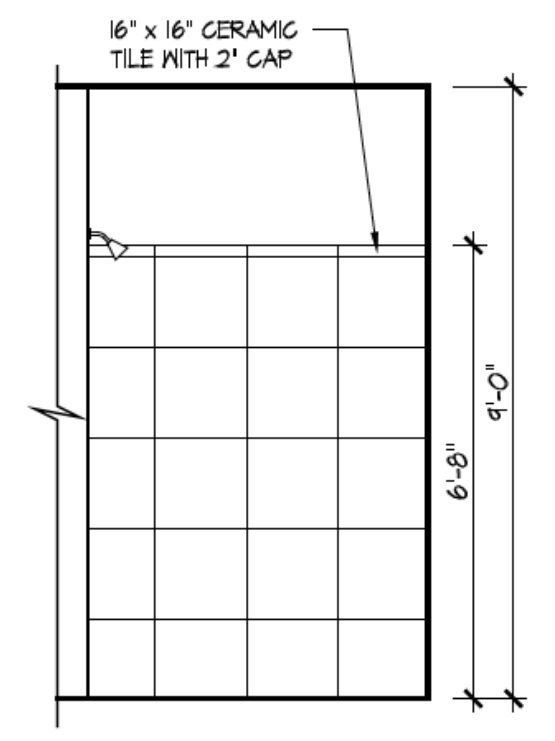
3 Deluxe Laundry  
A-402



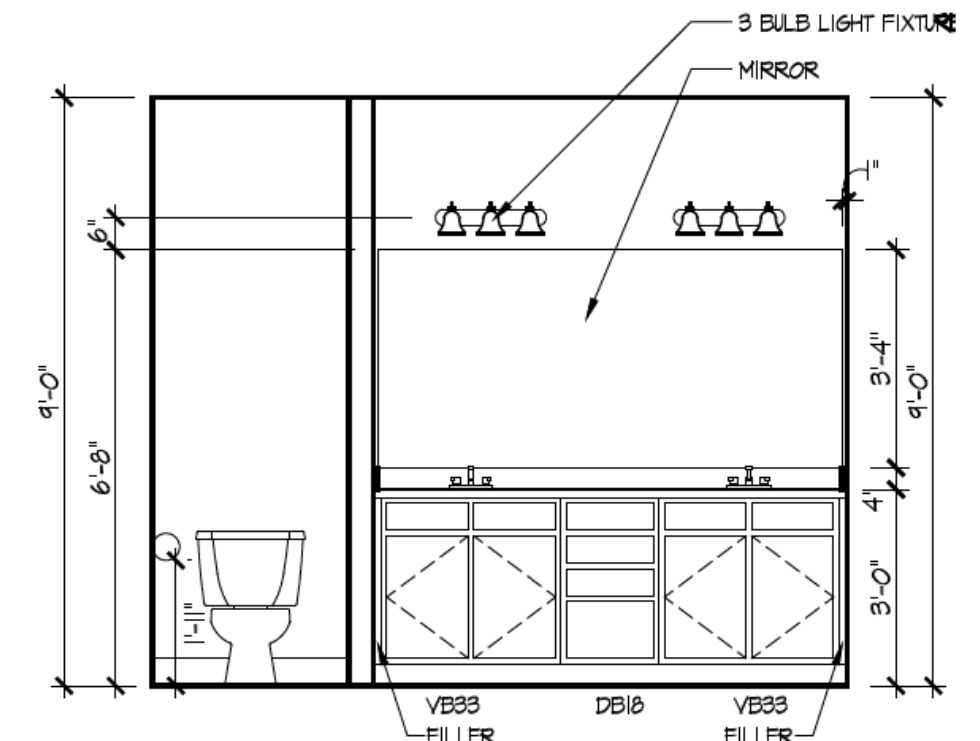
4 Fireplace  
A-402



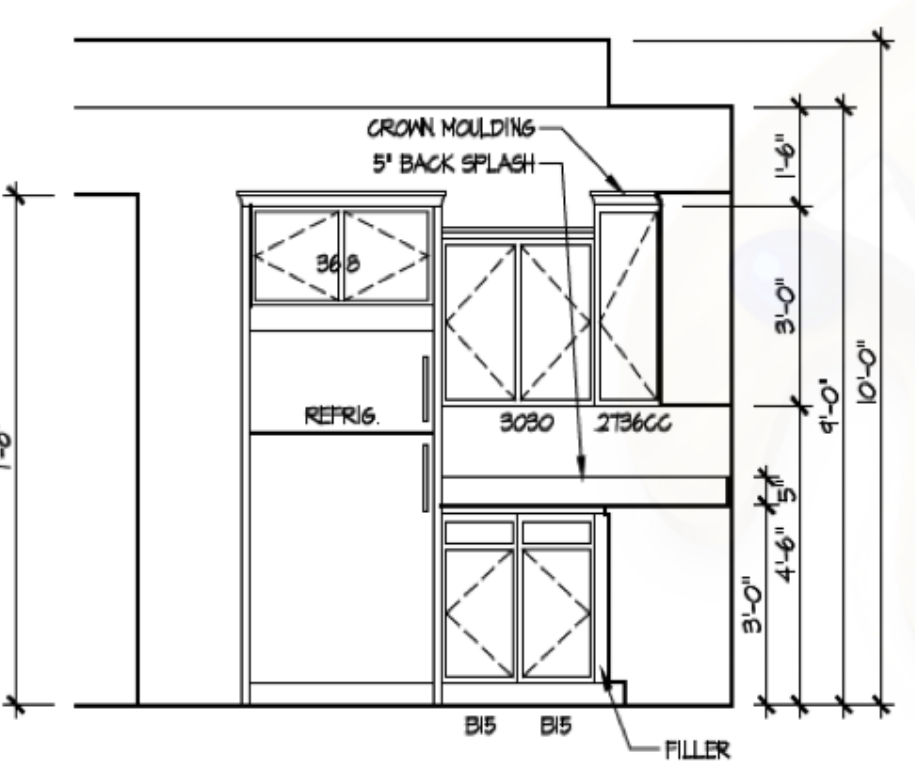
5 Kitchen - Island  
A-402



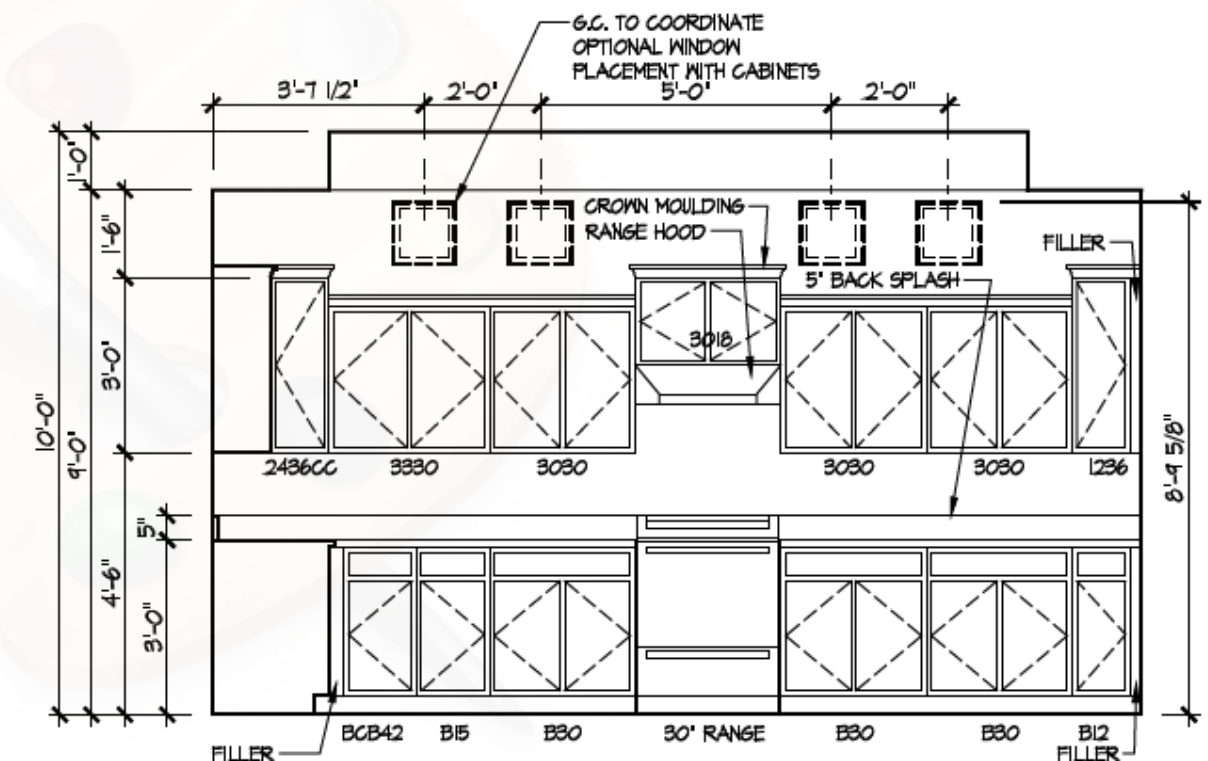
6 Master Bath Shower - Walk-in  
A-402



7 Master Bath Vanity  
A-402



8 Kitchen Staggered Layout  
A-402



ISSUE	DESCRIPTION	DATE
01	BUILDER SET	2/17/2025

PROJECT  
PLAN: BH Promenade Plus D4  
ELEV: Elevation B  
LOT: 160

DRAWING TITLE  
**DETAILS**

SHEET NUMBER  
**A-402**