

BH 162
4973 Rae Lane

2 story slab

1 large tankless heater

3 Hose bibs - no valves required

1 - tile shower drain

1 - Sterling 72171110-0 LH Drain 60" - Shower Base Pan

1 - need shower drain for shower base

1 - LH tub

Irrigation system

Laundry Tub

Ice maker

Humidifier valve

Gas Furnace , Tankless Heater , Fireplace and Range and additional
Range , Gas Grill



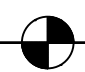
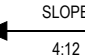

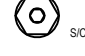
BH 162

MASTER PLAN: Promenade Plus | ELEVATION: Elevation B | COMMUNITY: Bel Haven | LOT NUMBER: 162 | ADDRESS: 4973 Rae Lane, West Chester, Ohio 45069

PLANS POWERED BY HIGHARC

PROJECT SUMMARY	
BUILDING AREA	
CONDITIONED AREA	
FIRST FLOOR SF	2122 SF
SECOND FLOOR SF	812 SF
TOTAL CONDITIONED AREA :	2934 SF
TOTAL GARAGE AREA :	
FRONT PORCH AND PORTICO AREA :	176 SF
REAR PORCH AREA :	146 SF
PATIO AREA :	199 SF

GENERAL NOTES
ONLY LOCATION SPECIFIC OPTIONS ARE SHOWN ON THESE DRAWINGS. PLEASE REFER TO OPTION SUMMARY AND/OR PURCHASE ORDERS FOR A COMPLETE LISTING OF OPTIONS.
DESIGN CRITERIA:
NUMBER OF STORIES: 2
BUILDING WIDTH: 42'-3"
BUILDING DEPTH: 79'-7"
BUILDING HEIGHT: 23'-4 1/2"
GOVERNMENTAL CODES AND STANDARDS
HOME TO BE BUILT TO CONFORM TO ALL APPLICABLE LOCAL CODES, PRACTICES AND STANDARDS.
BUILDING CODE ANALYSIS / DESIGN CRITERIA
HOME TO BE BUILT TO 2019 RESIDENTIAL CODE OF OHIO STANDARDS

GRAPHIC SYMBOLS & LEGEND	
	FIRST FLOOR EL. 0'-0"
	ROOF SLOPE 4:12
	SD
	SD / CO

SHEET INDEX	
COVER	A-000
SCHEDULES	A-010
GENERAL NOTES	A-020
FOUNDATION PLAN	A-050
FIRST FLOOR PLAN	A-101
SECOND FLOOR PLAN	A-102
ROOF PLAN	A-120
FRONT / BACK ELEVATION	A-200
LEFT / RIGHT ELEVATION	A-201
DETAILS	A-401
DETAILS	A-402
DETAILS	A-403
DETAILS	A-404
DETAILS	A-405
PERSPECTIVE VIEWS	A-900
FIRST FLOOR ELECTRICAL PLAN	E-101
SECOND FLOOR ELECTRICAL PLAN	E-102
SHEAR WALL PLAN	S-100
SHEAR WALL DETAILS	S-101

Higharc, Inc. is not an architectural firm nor are the artistic representations contained herein intended to be construed as ready-to-use architectural plans, construction documents, drawings, renderings, or any other similar or related documents. All drawings are artist's representations only and solely intended to reflect design intent derived exclusively from the home building plans and associated information, data, and specifications provided by Epcon Foundation DG. Higharc, Inc. is not responsible, nor may it be held liable for any errors or omissions contained herein or resulting from its usage. Any usage of the representations should be reviewed by local professionals to ensure conformance with local and state codes and be field verified prior to the start of any construction.

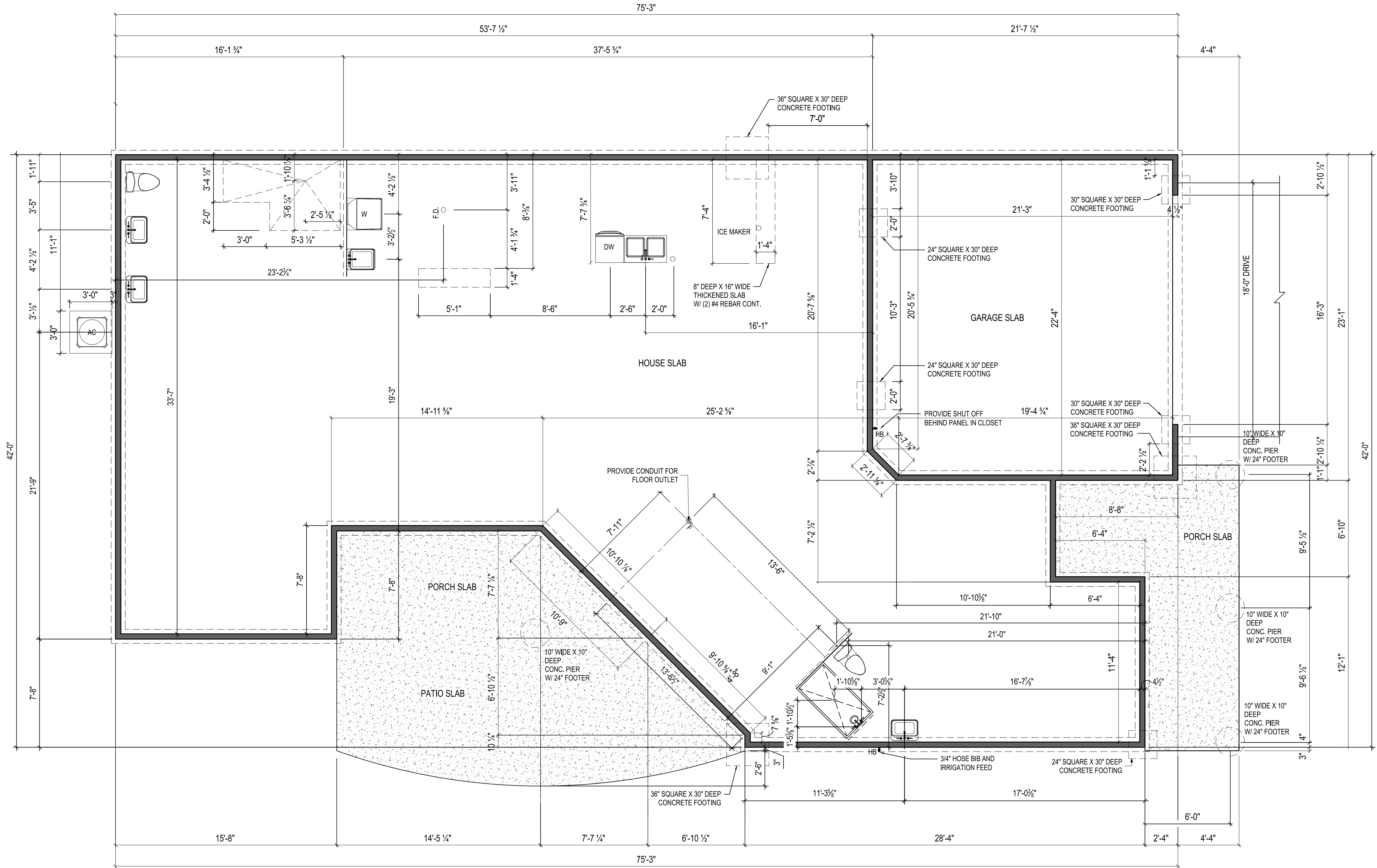
ISSUE	DESCRIPTION	DATE
01	BUILDER SET	1/27/2025

PROJECT
PLAN: BH Promenade Plus D4
ELEV: Elevation B
LOT: 162

DRAWING TITLE
COVER

SHEET NUMBER
A-000

Higharc, Inc. is not an architectural firm nor are the artistic representations contained herein intended to be construed as ready-to-use architectural plans, construction documents, drawings, renderings, or any other similar or related documents. All drawings are artist's representations only and solely intended to reflect design intent derived exclusively from the home building plans and associated information, data, and specifications provided by Epcon Foundation DG. Higharc, Inc. is not responsible, nor may it be held liable for any errors or omissions contained herein or resulting from its usage. Any usage of the representations should be reviewed by local professionals to ensure conformance with local and state codes and be field verified prior to the start of any construction.



NOTES:
THICKENED SLAB SHALL BE REINFORCED
WITH CONTINUOUS (2) #4 REBAR

PROJECT

PLAN: BH Promenade Plus D4
ELEV: Elevation B
LOT: 162

DRAWING TITLE

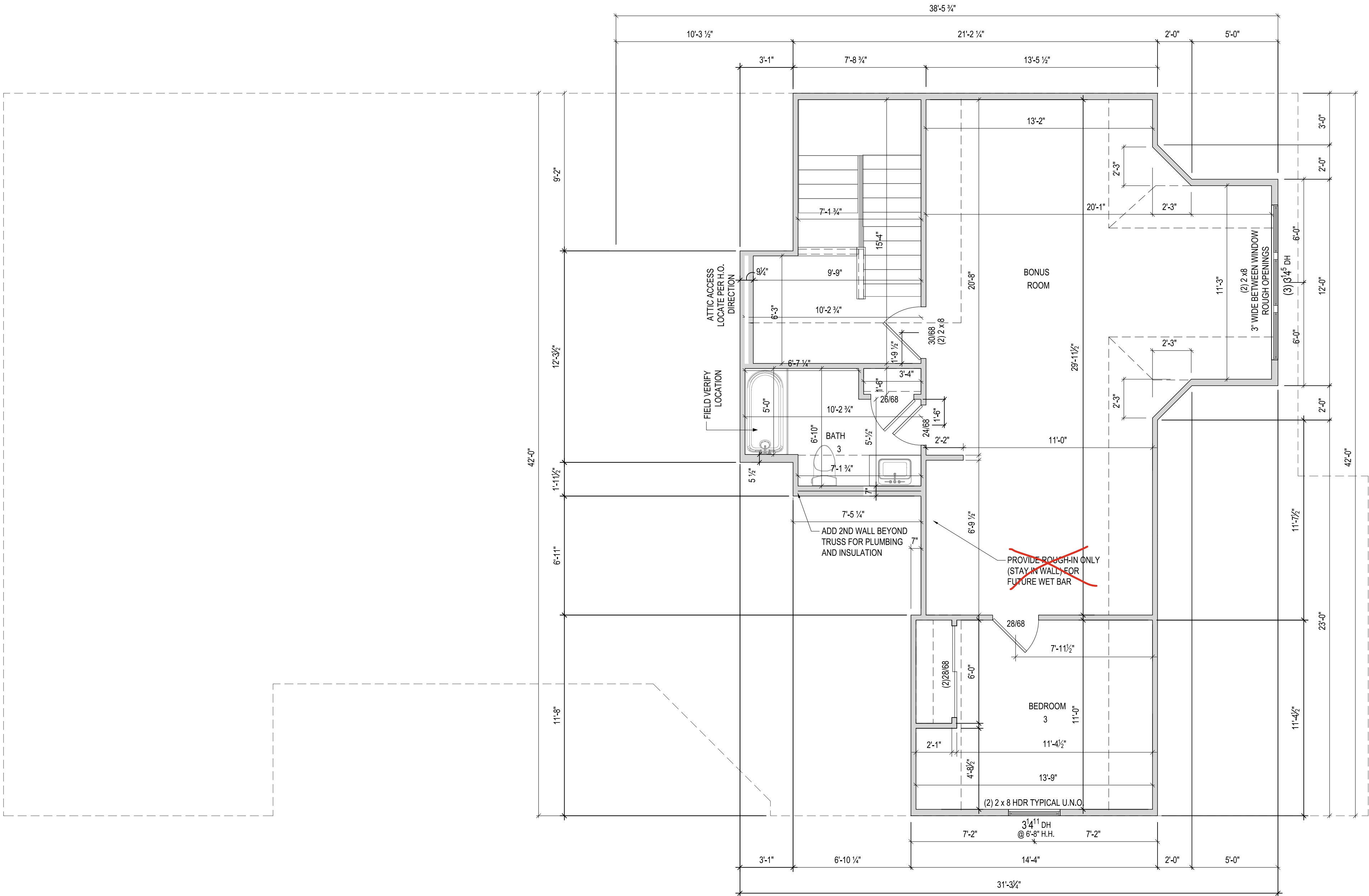
FOUNDATION PLAN

SHEET NUMBER

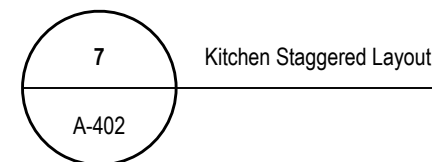
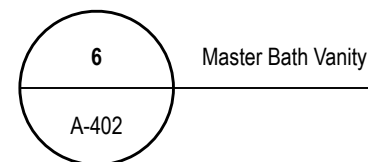
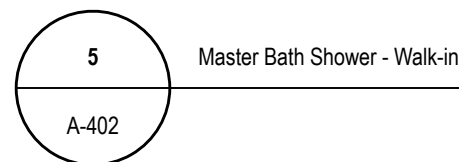
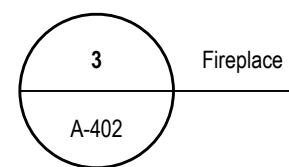
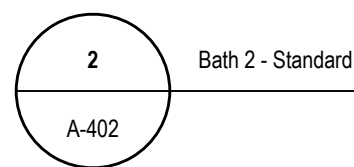
A-050

NOTES:
1.) 3" WIDE BETWEEN WINDOW ROUGH OPENINGS

Higharc, Inc. is not an architectural firm nor are the artistic representations contained herein intended to be construed as ready-to-use architectural plans, construction documents, drawings, renderings, or any other similar or related documents. All drawings are artist's representations only and solely intended to reflect design intent derived exclusively from the home building plans and associated information, data, and specifications provided by Epcon Foundation DG. Higharc, Inc. is not responsible, nor may it be held liable for any errors or omissions contained herein or resulting from its usage. Any usage of the representations should be reviewed by local professionals to ensure conformance with local and state codes and be field verified prior to the start of any construction.



ISSUE	DESCRIPTION	DATE
01	BUILDER SET	1/27/2025
PROJECT		
PLAN: BH Promenade Plus D4 ELEV: Elevation B LOT: 162		
DRAWING TITLE		
SECOND FLOOR PLAN		
SHEET NUMBER		
A-102		
© 2025 HIGHARC, INC.		



Bel Haven LLC
West Chester, OH

Highcare, Inc. is not an architectural firm nor are the artistic representations contained herein intended to be construed as ready-to-use architectural plans, construction documents, drawings, renderings, or other similar or related documents. All drawings are artist's representations only and solely intended to reflect design intent derived exclusively from the home building plans and associated information, data, and specifications provided by Epcott Foundation DG, Highcare, Inc. is not responsible, nor may it be held liable for any errors or omissions contained herein or resulting from its usage. Any usage of the representations should be reviewed by local professionals to ensure conformance with local and state codes and be held artist's prior to the start of any construction.

ISSUE	DESCRIPTION	DATE
01	BUILDER SET	1/27/2025

PROJECT

PLAN: BH Promenade Plus D4

ELEV: Elevation B

LOT: 162

DRAWING TITLE

DETAILS

SHEET NUMBER

A-402