

BH 162
4969 Rae Lane

1 story slab
1 small tankless heater
2 Hose bibs - no valves required
2 - tile showers
Irrigation system
Laundry Tub
Ice maker
Humidifier valve
Dog wash station - washer box 6" off floor !!

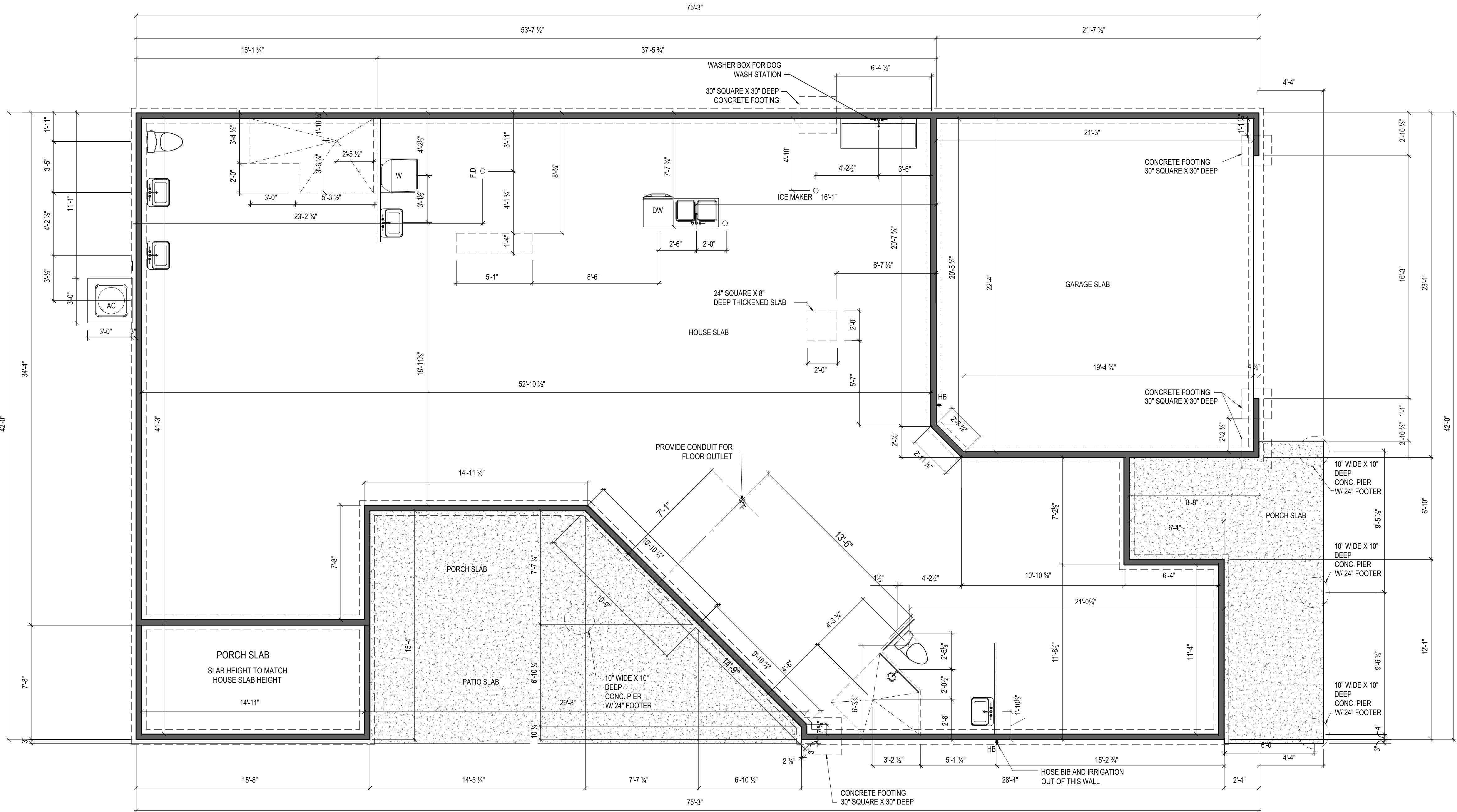
Gas Furnace , Tankless Heater , Fireplace and Range



Epcon Foundation DG

Bel Haven LLC
West Chester, OH.

Higharc, Inc. is not an architectural firm nor are the artistic representations contained herein intended to be construed as ready-to-use architectural plans, construction documents, drawings, renderings, or any other similar or related documents. All drawings are artist's representations only and solely intended to reflect design intent derived exclusively from the home building plans and associated information, data, and specifications provided by Epcon Foundation DG. Higharc, Inc. is not responsible, nor may it be held liable for any errors or omissions contained herein or resulting from its usage. Any usage of the representations should be reviewed by local professionals to ensure conformance with local and state codes and be field verified prior to the start of any construction.



NOTES:
THICKENED SLAB SHALL BE REINFORCED
WITH CONTINUOUS (2) #4 REBAR

1

FOUNDATION PLAN

A-050

1/8" = 1'-0" @ 11" x 17"

PROJECT
PLAN: BH Promenade Plus D4
ELEV: Elevation B
LOT: 163

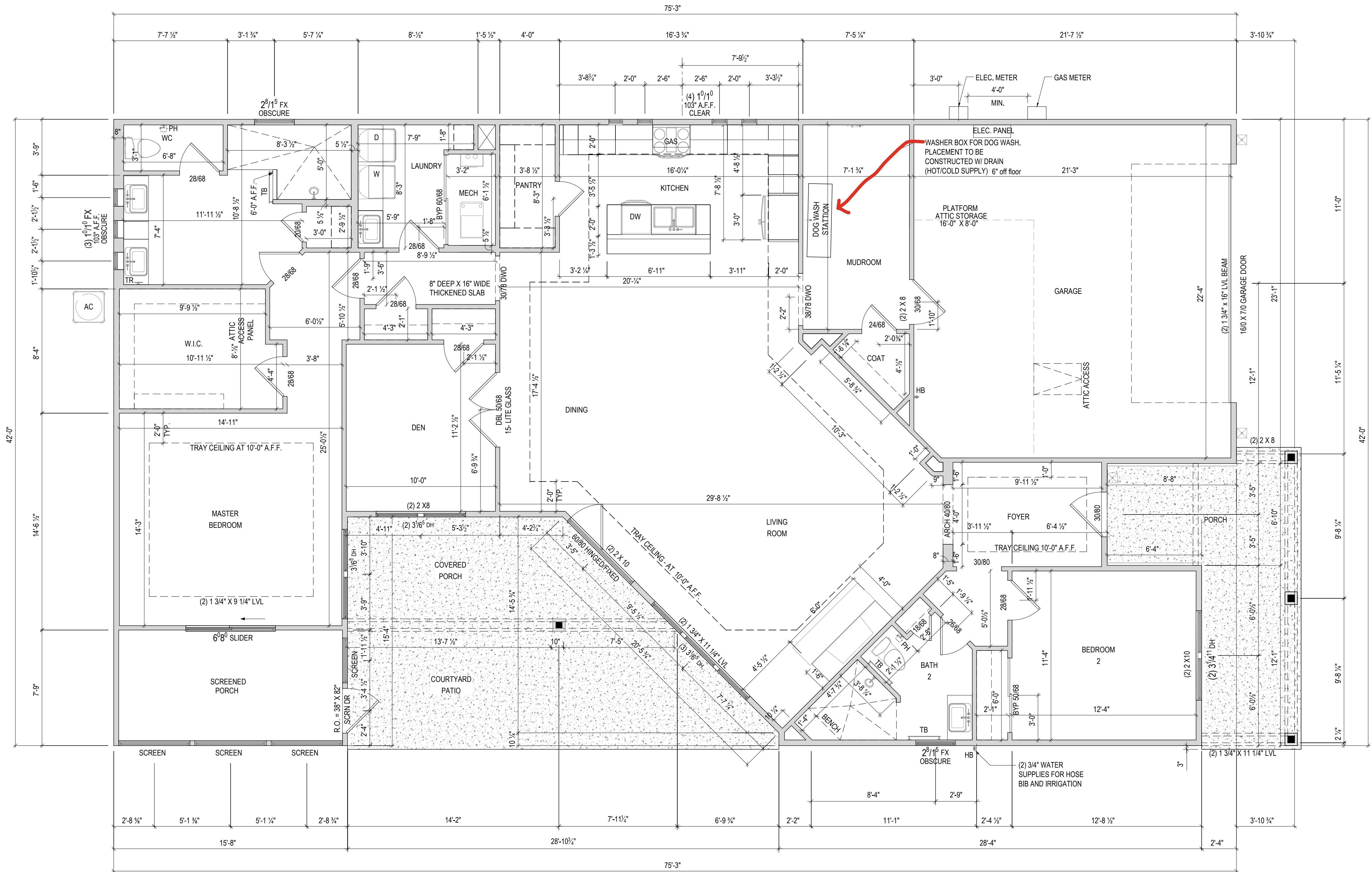
DRAWING TITLE
FOUNDATION PLAN

SHEET NUMBER

A-050

NOTES:
1.) ARCHED OPENINGS: SPRING POINT @ 78"
A.A.F. TOP OF ARCH 8'-6" ABOVE SPRING
POINT.
2.) WINDOWS R.O. HEAD HEIGHT TO BE 8'-0" A.F.F.
U.N.O.
3.) DISTANCE BETWEEN GROUPED WINDOWS
SHALL BE 4'-1/2".

Higharc, Inc. is not an architectural firm nor are the artistic representations contained herein intended to be construed as ready-to-use architectural plans, construction documents, drawings, renderings, or any other similar or related documents. All drawings are artist's representations only and solely intended to reflect design intent derived exclusively from the home building plans and associated information, data, and specifications provided by Epcon Foundation DG. Higharc, Inc. is not responsible, nor may it be held liable for any errors or omissions contained herein or resulting from its usage. Any usage of the representations should be reviewed by local professionals to ensure conformance with local and state codes and be field verified prior to the start of any construction.



ISSUE	DESCRIPTION	DATE
01	BUILDER SET	1/30/2025

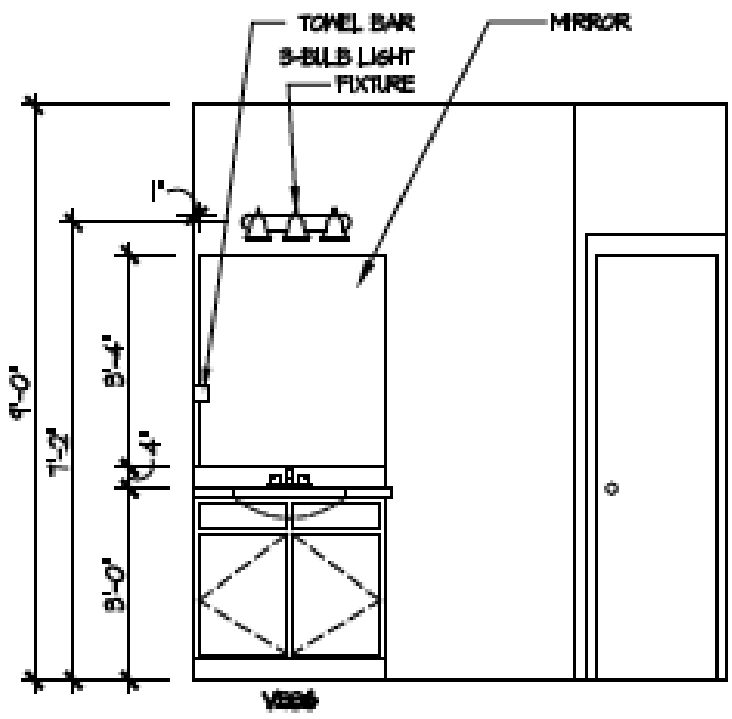
PROJECT
PLAN: BH Promenade Plus D4
ELEV: Elevation B
LOT: 163

DRAWING TITLE
**FIRST FLOOR
PLAN**

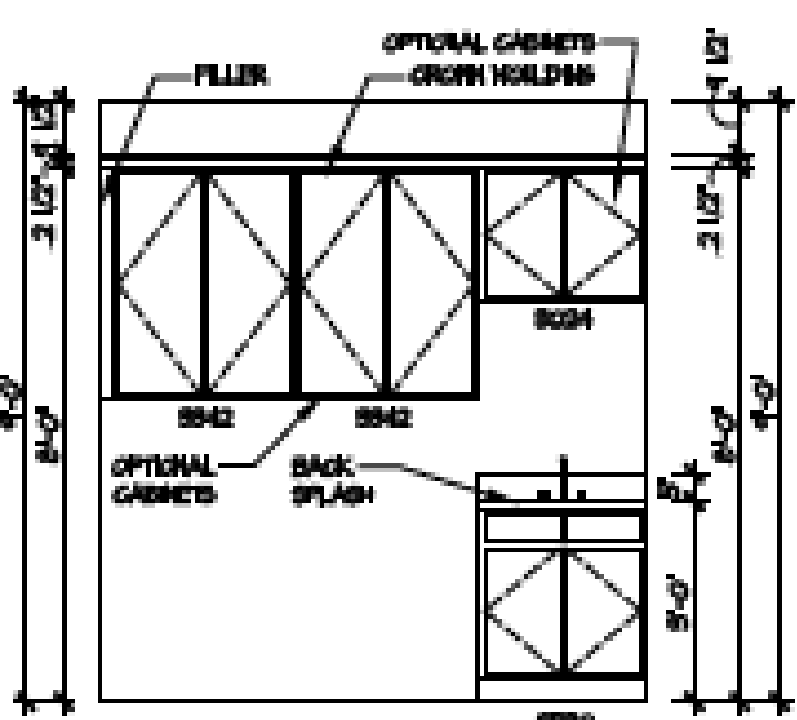
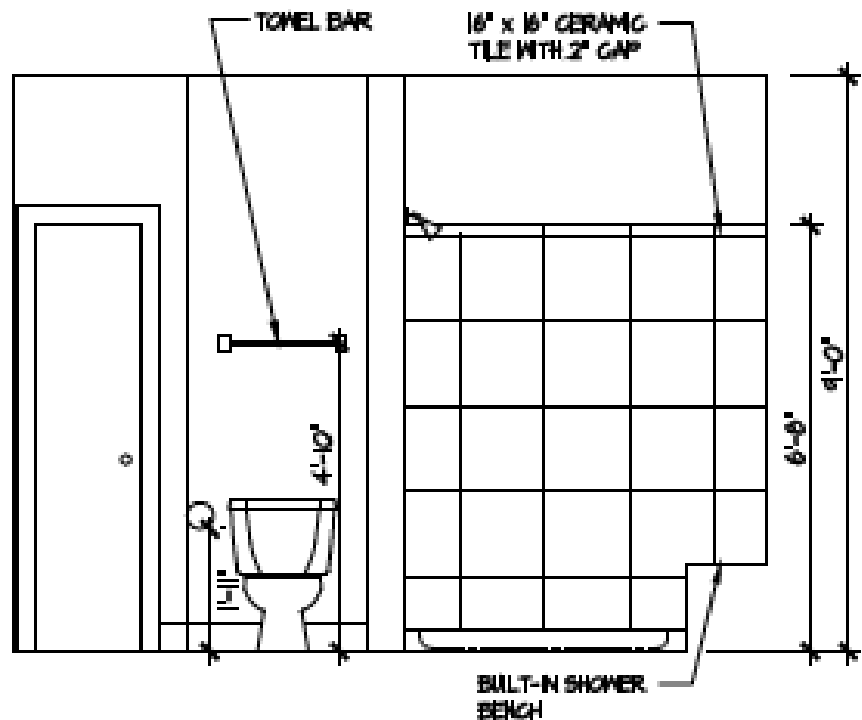
SHEET NUMBER

A-101

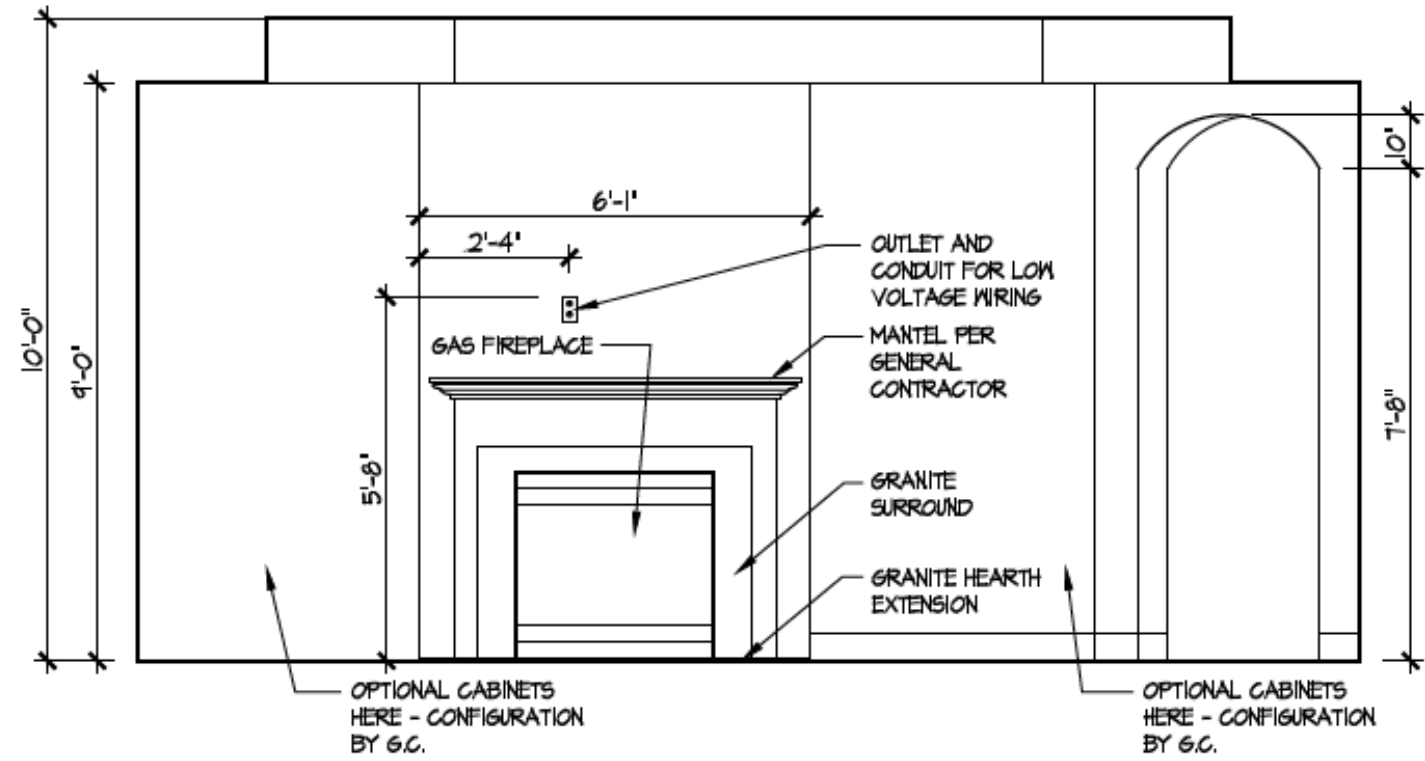
© 2025 HIGHARC, INC.



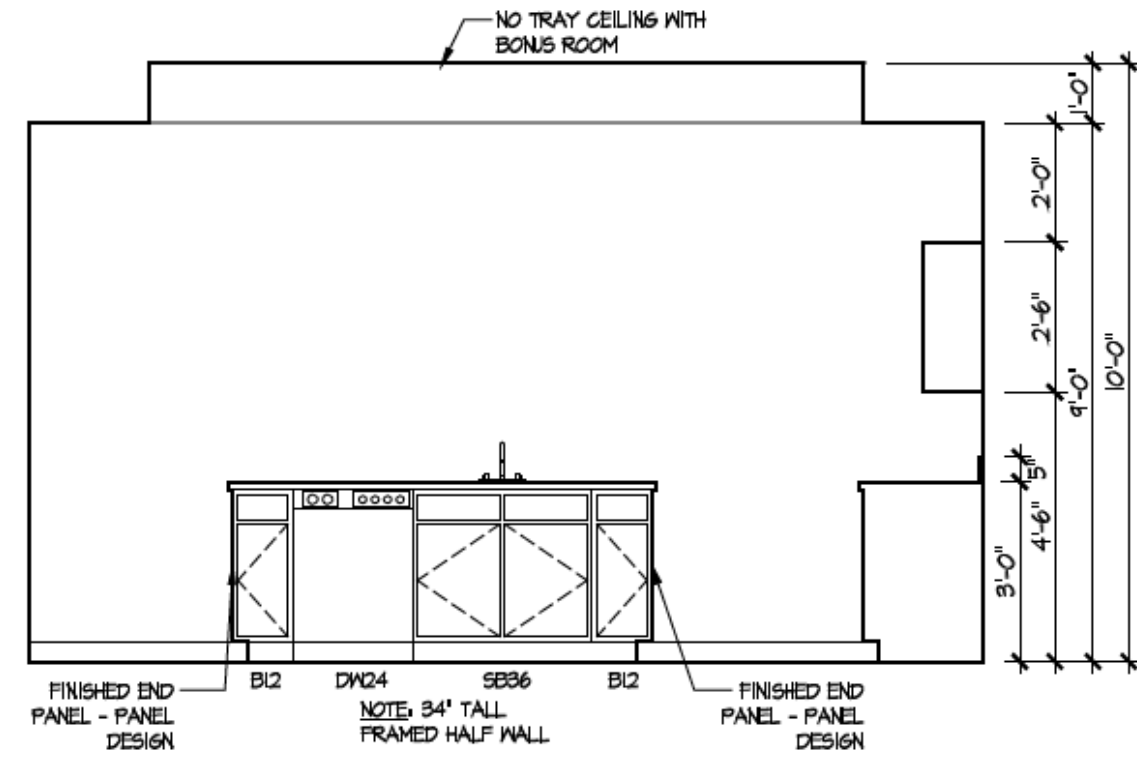
2 Bath 2 - Walk-in Shower
A-402



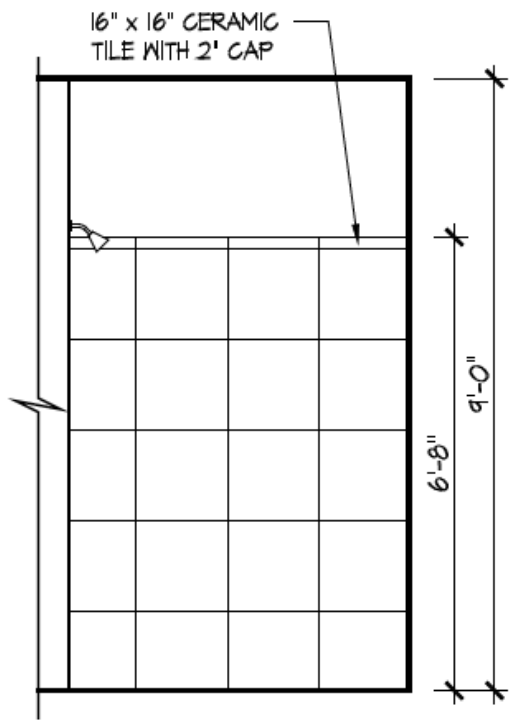
3 Deluxe Laundry
A-402



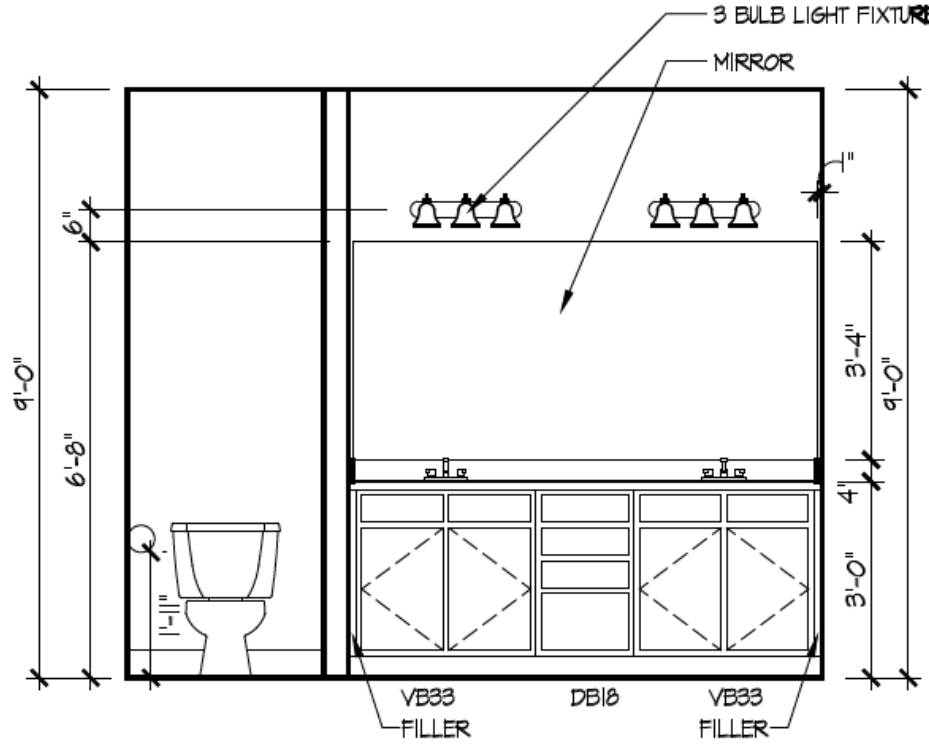
4 Fireplace
A-402



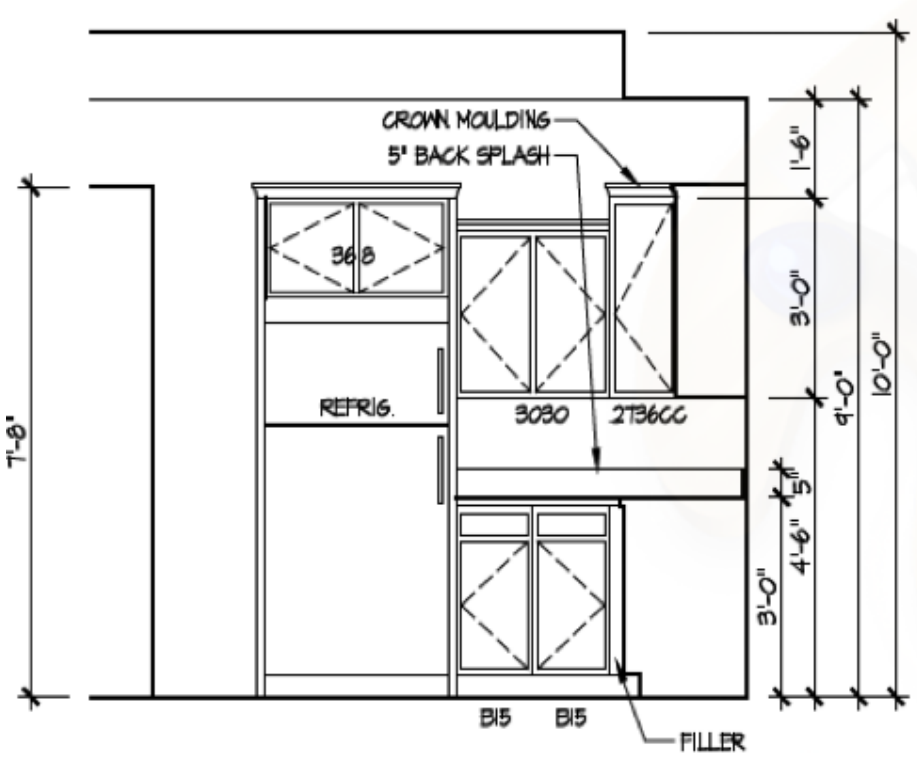
5 Kitchen - Island
A-402



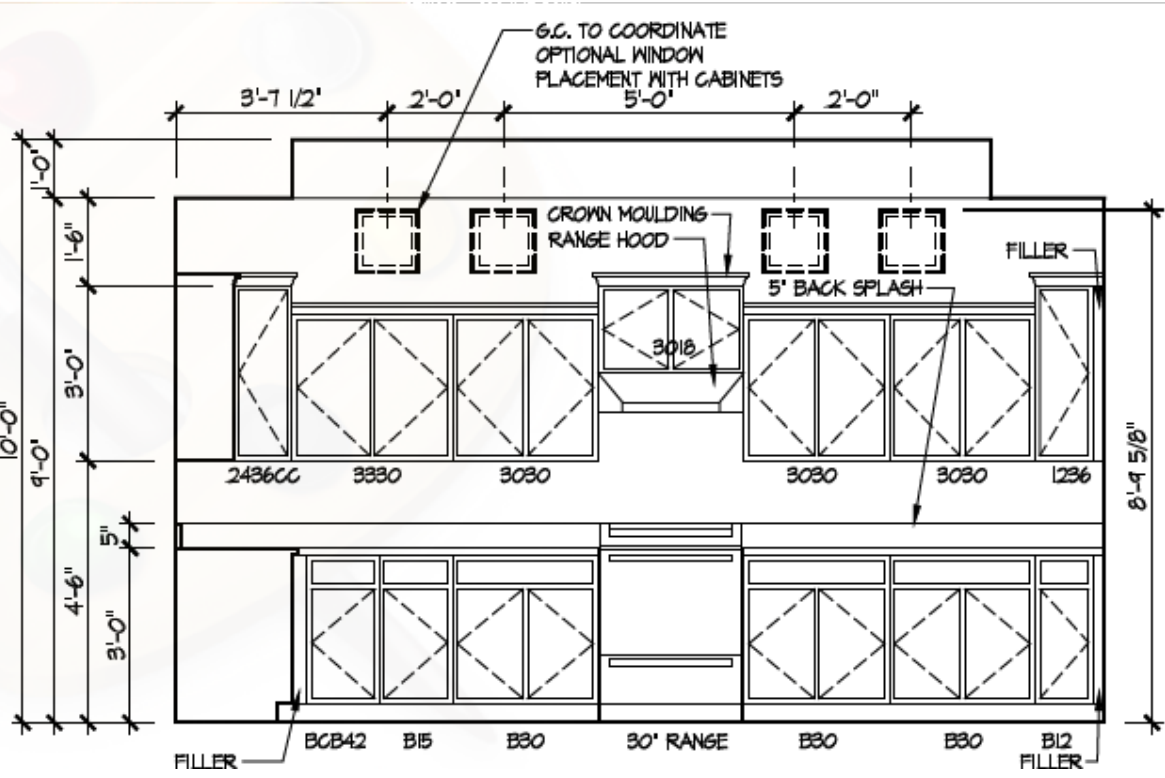
6 Master Bath Shower - Walk-in
A-402



7 Master Bath Vanity
A-402



8 Kitchen Staggered Layout
A-402



Higharc, Inc. is not an architectural firm nor are the artistic representations contained herein intended to be construed as ready-to-use architectural plans, construction documents, drawings, renderings, or any other similar or related documents. All drawings are artist's representations only and solely intended to reflect design intent derived exclusively from the home building plans and associated information, data, and specifications provided by Epcon Foundation DG. Higharc, Inc. is not responsible, nor may it be held liable for any errors or omissions contained herein or resulting from its usage. Any usage of the representations should be reviewed by local professionals to ensure conformance with local and state codes and be field verified prior to the start of any construction.

ISSUE	DESCRIPTION	DATE
01	BUILDER SET	1/30/2025

PROJECT
PLAN: BH Promenade Plus D4
ELEV: Elevation B
LOT: 163

DRAWING TITLE
DETAILS

SHEET NUMBER
A-402