

Foundation Plan
Scale: 1/4" = 1'-0"

DELUXE OWNER SUITE
- SEE SHEET A.101R

SEE A.100 OPT EXTENDED
KITCHEN OPTION

CHECK ISLAND LOCATION
& SIZE AS IT IS DIFF THAN
PLANS

SEE A.100 OPT 1/2
BATH OPTION

FOUNDATION CODED NOTES
(FOUNDATION PLAN ONLY)
(ALL NOTES NOT APPLICABLE TO ALL SHEETS/UNIT TYPES)

- POURED CONCRETE FOUNDATION STEM WALL (TYPICAL) - SEE WALL SECTIONS SHEETS.
- 12" WIDE CONCRETE FOOTING WITH STEEL BAR REINFORCING AS REQUIRED BY SOILS ENGINEER - MAINTAIN BOTTOM OF FOOTING A MINIMUM 30" BELOW FINISH GRADE AND TOP OF FOOTING SET 12" BELOW FINISHED FLOOR - TYPICAL.
- PROVIDE MIN. 2 ANCHOR BOLTS EACH SIDE OF GARAGE DOORS.
- SAW CUT CONTROL JOINT IN CONCRETE SLAB, 1/8" WIDE x 1/4" DEEP - TYPICAL.
- 4" GLASS FIBER REINFORCED CONCRETE FLOOR SLAB OVER 6 MIL. POLYETHYLENE VAPOR BARRIER AND 4" GRAVEL BASE - TYPICAL.
- 4" GLASS FIBER REINFORCED CONCRETE FLOOR SLAB OVER 4" GRAVEL BASE.
- PROVIDE WEATHERLIP @ GARAGE DOOR OPENINGS - SEE DETAIL D, SHEET A301.
- PIPE LOCATION CENTERED ON WALL ABOVE.
- NO STEM WALL AT GARAGE DOOR OPENINGS.
- WASHER ALWAYS LOCATED LEFT OF DRYER. OPTIONAL UTILITY SINK ALWAYS LOCATED LEFT OF WASHER.
- ELECTRICAL CONDUIT UNDER SLAB FOR ELECTRICAL OUTLET AT KITCHEN ISLAND.
- ELECTRICAL CONDUIT SLAB PENETRATION.
- 24" SQUARE CONCRETE FOOTING WITH STEEL BAR REINFORCING AS REQUIRED BY SOILS ENGINEER - MAINTAIN BOTTOM OF FOOTING A MINIMUM 30" BELOW FINISH GRADE AND TOP OF FOOTING SET 12" BELOW FINISHED FLOOR.
- DASHED LINES INDICATE LOCATION OF PLUMBING FIXTURES ABOVE - SHOWN FOR REFERENCE ONLY.
- 10" WIDE x 10" DEEP CONCRETE PIER WITH 24" DIA. FOOTING. MAINTAIN BOTTOM OF FOOTING A MINIMUM 30" BELOW FINISH GRADE AND TOP OF PIER SET 6" BELOW FINISHED FLOOR.
- DOTTED LINE INDICATES WALL LINE OF BASE UNIT.
- 8" DEEP X 16" WIDE THICKENED SLAB WITH (2) NO. 4 REBAR CONTINUOUS.
- 24" DIA. FOOTING - MAINTAIN BOTTOM OF FOOTING A MINIMUM 30" BELOW FINISH GRADE.
- 12" DEEP CONCRETE FOOTING WITH (2) NO. 5 REBAR EACH WAY - SEE PLANS FOR SIZE - MAINTAIN BOTTOM OF FOOTING A MINIMUM 30" BELOW FINISH GRADE. 12" THICKENED SLAB EDGE TO CONTINUE DOWN TO FOOTING.
- 24" WIDE CONCRETE FOOTING WITH STEEL BAR REINFORCING AS REQUIRED BY SOILS ENGINEER - MAINTAIN BOTTOM OF FOOTING A MINIMUM 30" BELOW FINISH GRADE AND TOP OF FOOTING SET 12" BELOW FINISHED FLOOR.
- 12" DEEP X 16" WIDE THICKENED SLAB WITH (2) NO. 4 REBAR CONTINUOUS. TYPICAL UNDER ALL INTERIOR SHEAR WALLS.
- 36" SQUARE CONCRETE FOOTING WITH STEEL BAR REINFORCING AS REQUIRED BY SOILS ENGINEER - MAINTAIN BOTTOM OF FOOTING A MINIMUM 30" BELOW FINISH GRADE AND TOP OF FOOTING SET 12" BELOW FINISHED FLOOR.
- 30" SQUARE CONCRETE FOOTING WITH STEEL BAR REINFORCING AS REQUIRED BY SOILS ENGINEER - MAINTAIN BOTTOM OF FOOTING A MINIMUM 30" BELOW FINISH GRADE AND TOP OF FOOTING SET 12" BELOW FINISHED FLOOR.
- 24" SQUARE X 8" DEEP THICKENED SLAB WITH (3) NO. 4 REBAR CONTINUOUS EACH WAY.

GENERAL FOUNDATION NOTES

- SOIL BEARING CAPACITY ASSUMED TO BE 2500 PSF AND SHALL BE VERIFIED BY SOILS ENGINEER PRIOR TO PLACEMENT OF BUILDING FOUNDATION. CONSULT ARCHITECT WHEN INADEQUATE SOIL CAPACITIES ARE FOUND.
- ALL DIMENSIONS ARE TO FACE OF FOUNDATION / BASEMENT WALL UNLESS NOTED OTHERWISE.
- HOLD DOWN TOP OF FOUNDATION WALL 8" AT ALL ENTRY DOORS TO ALLOW FOR EXTENSION OF FLOOR SLAB UNDER THE DOOR THRESHOLDS.
- PLUMBING CONTRACTOR TO USE ROUND BUCKETS FOR FORMED SLAB PENETRATIONS.
- CONCRETE CONTRACTOR TO INSTALL 1/2" EXP. J.T. AROUND THE PERIMETER OF GARAGES.
- CONCRETE CONTRACTOR COORDINATE WITH PLUMBING FOR LOCATION OF BLOCKOUTS FOR UNDERSLAB LINES.
- CONCRETE CONTRACTOR - SEE FIRST FLOOR PLAN FOR SIDEWALKS AND PATIOS.
- CONCRETE CONTRACTOR TO VERIFY SLAB PENETRATION AT TUB/SHOWER OPTIONS.
- SEE WALL SECTION SHEETS FOR ANCHOR BOLT SPECIFICATIONS.



Foundation Development
Group, LLC & Bel Haven, LLC
Bel Haven
Beckett Road
West Chester, Ohio 45069

PROPRIETARY RIGHTS NOTICE
COPYRIGHT 2007 EPCON COMMUNITIES FRANCHISING, INC.
ALL RIGHTS ARE RESERVED IN THIS INFORMATION AND ALL RELATED ILLUSTRATIONS, PLANS, BLUEPRINTS, SKETCHES, DRAWINGS, OR ANY OTHER TANGIBLE, EXPRESSIONS THEREOF, WHICH ARE THE PROPERTY OF EPCON COMMUNITIES FRANCHISING, INC. 800 STONEHENGE PARKWAY, DUBLIN, OHIO 43017, TELEPHONE 848.882.8877. NO ONE MAY BUILD, LICENSE, TRANSFER, REPRODUCE OR DUPLICATE THIS WORK IN ANY WAY WITHOUT THE WRITTEN AUTHORIZATION OF EPCON COMMUNITIES FRANCHISING, INC.
THESE DRAWINGS SHALL BE USED IN CONFORMANCE WITH ALL LOCAL BUILDING, MECHANICAL, PLUMBING AND ELECTRICAL CODES AND SHALL MEET THE REQUIREMENTS OF THE HEALTH DEPARTMENT, FIRE MARSHALL, AMERICANS WITH DISABILITIES ACT ACCESSIBILITY GUIDELINES (ADAAG), THE FAIR HOUSING ACT ACCESSIBILITY GUIDELINES (FHAG), AND SHALL BE CONSTRUCTED IN CONFORMANCE WITH STATE AND LOCAL ENERGY REQUIREMENTS.

Prototype Disk No.	Interim Page Revisions	Date
	Revision	1/2/19

Architect Project Number
2019-044

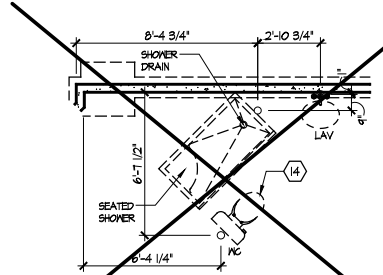
Community Dates & Revisions	
Date Originated	20 DEC 2019
Bid	
Permit	
Construction	
Revisions	
▲	▲
▲	▲

Drawing Title
Foundation Plan

Architectural Style
European Country

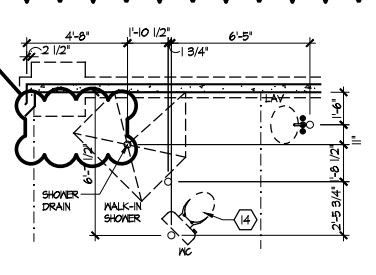
Sheet Number
A.100
D4 - 2017

CORNER SHOWER SEAT



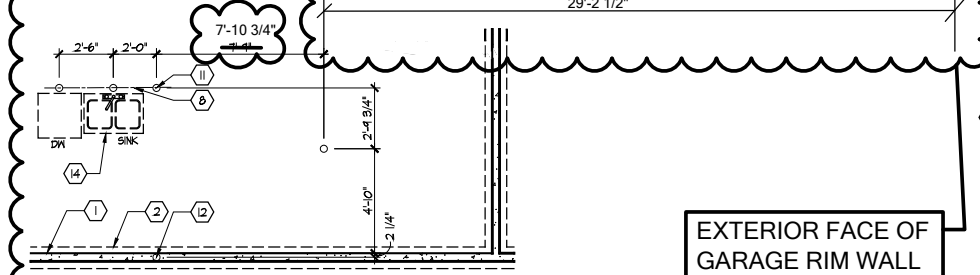
Bath 2 - Optional Shower w/ Built-in Seat

Scale: 1/4" = 1'-0"



Bath 2 - Optional Walk-in Shower

Scale: 1/4" = 1'-0" YES



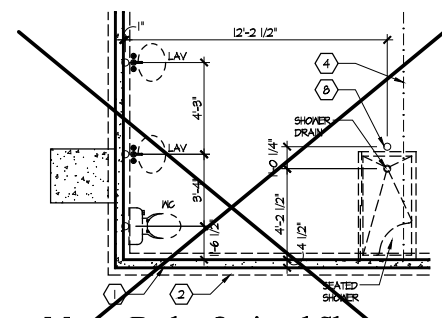
Kitchen - Extended Option

Scale: 1/4" = 1'-0" YES

EXTERIOR FACE OF GARAGE RIM WALL

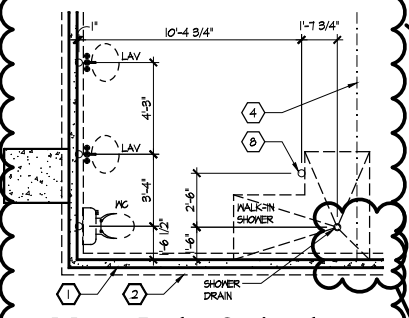
FOUNDATION CODED NOTES

- FOUNDATION PLAN ONLY
(ALL NOTES NOT APPLICABLE TO ALL SHEETS/UNIT TYPES)
- POURED CONCRETE FOUNDATION STEM WALL (TYPICAL) - SEE WALL SECTIONS SHEETS.
 - 12" WIDE CONCRETE FOOTING WITH STEEL BAR REINFORCING AS REQUIRED BY SOILS ENGINEER - MAINTAIN BOTTOM OF FOOTING A MINIMUM 30" BELOW FINISH GRADE AND TOP OF FOOTING SET 12" BELOW FINISHED FLOOR - TYPICAL.
 - PROVIDE MIN. 2 ANCHOR BOLTS EACH SIDE OF GARAGE DOORS.
 - SAW CUT CONTROL JOINT IN CONCRETE SLAB, 1/8" WIDE x 1/4" DEEP - TYPICAL.
 - 4" GLASS FIBER REINFORCED CONCRETE FLOOR SLAB OVER 6 MIL. POLYETHYLENE VAPOR BARRIER AND 4" GRAVEL BASE - TYPICAL.
 - 4" GLASS FIBER REINFORCED CONCRETE FLOOR SLAB OVER 4" GRAVEL BASE.
 - PROVIDE WEATHERLIP @ GARAGE DOOR OPENING - SEE DETAIL D, SHEET A301.
 - PIPE LOCATION CENTERED ON WALL ABOVE.
 - NO STEM WALL AT GARAGE DOOR OPENINGS.
 - WASHER ALWAYS LOCATED LEFT OF DRYER. OPTIONAL UTILITY SINK ALWAYS LOCATED LEFT OF WASHER.
 - ELECTRICAL CONDUIT UNDER SLAB FOR ELECTRICAL OUTLET AT KITCHEN ISLAND.
 - ELECTRICAL CONDUIT SLAB PENETRATION.
 - 24" SQUARE CONCRETE FOOTING WITH STEEL BAR REINFORCING AS REQUIRED BY SOILS ENGINEER - MAINTAIN BOTTOM OF FOOTING A MINIMUM 30" BELOW FINISH GRADE AND TOP OF FOOTING SET 12" BELOW FINISHED FLOOR.
 - DASHED LINES INDICATE LOCATION OF PLUMBING FIXTURES ABOVE - SHOWN FOR REFERENCE ONLY.
 - 10" WIDE x 10" DEEP CONCRETE PIER WITH 24" DIA. FOOTING. MAINTAIN BOTTOM OF FOOTING A MINIMUM 30" BELOW FINISH GRADE AND TOP OF PIER SET 6" BELOW FINISHED FLOOR.
 - DOTTED LINE INDICATES WALL LINE OF BASE UNIT.
 - 8" DEEP x 16" WIDE THICKENED SLAB WITH (2) NO. 4 REBAR CONTINUOUS.
 - 24" DIA. FOOTING - MAINTAIN BOTTOM OF FOOTING A MINIMUM 30" BELOW FINISH GRADE.
 - 12" DEEP CONCRETE FOOTING WITH (2) NO. 5 REBAR EACH WAY - SEE PLANS FOR SIZE - MAINTAIN BOTTOM OF FOOTING A MINIMUM 30" BELOW FINISH GRADE. 12" THICKENED SLAB EDGE TO CONTINUE DOWN TO FOOTING.
 - 24" WIDE CONCRETE FOOTING WITH STEEL BAR REINFORCING AS REQUIRED BY SOILS ENGINEER - MAINTAIN BOTTOM OF FOOTING A MINIMUM 30" BELOW FINISH GRADE AND TOP OF FOOTING SET 12" BELOW FINISHED FLOOR.
 - 12" DEEP x 16" WIDE THICKENED SLAB WITH (2) NO. 4 REBAR CONTINUOUS. TYPICAL UNDER ALL INTERIOR SHEAR WALLS.
 - 36" SQUARE CONCRETE FOOTING WITH STEEL BAR REINFORCING AS REQUIRED BY SOILS ENGINEER - MAINTAIN BOTTOM OF FOOTING A MINIMUM 30" BELOW FINISH GRADE AND TOP OF FOOTING SET 12" BELOW FINISHED FLOOR.
 - 30" SQUARE CONCRETE FOOTING WITH STEEL BAR REINFORCING AS REQUIRED BY SOILS ENGINEER - MAINTAIN BOTTOM OF FOOTING A MINIMUM 30" BELOW FINISH GRADE AND TOP OF FOOTING SET 12" BELOW FINISHED FLOOR.
 - 24" SQUARE x 8" DEEP THICKENED SLAB WITH (3) NO. 4 REBAR CONTINUOUS EACH WAY.



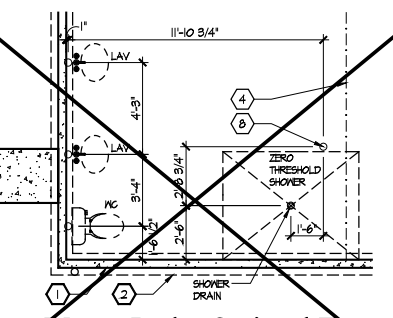
Master Bath - Optional Shower w/ Built-in Seat

Scale: 1/4" = 1'-0"



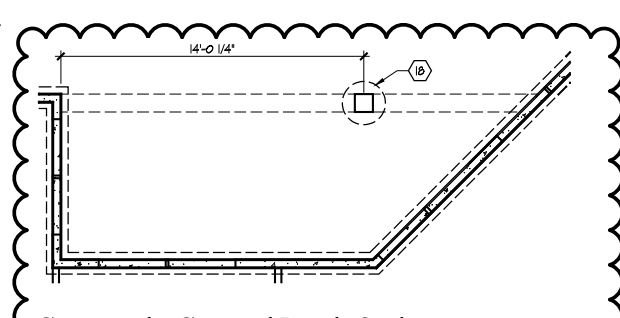
Master Bath - Optional Walk-in Shower

Scale: 1/4" = 1'-0" YES



Master Bath - Optional Zero Threshold Shower

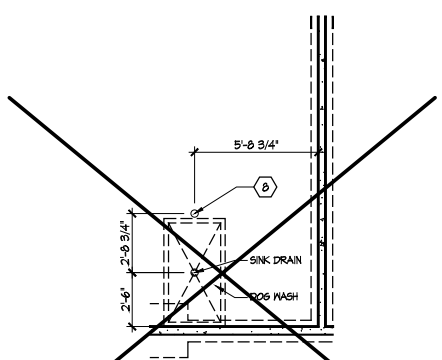
Scale: 1/4" = 1'-0"



Courtyard - Covered Porch Option

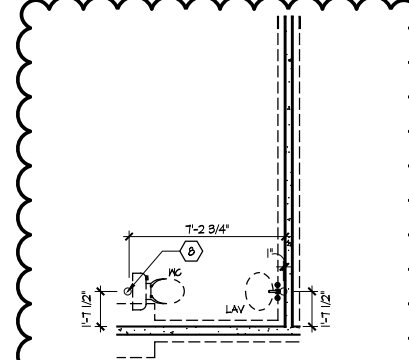
Scale: 1/4" = 1'-0" YES

CORNER SHOWER SEAT



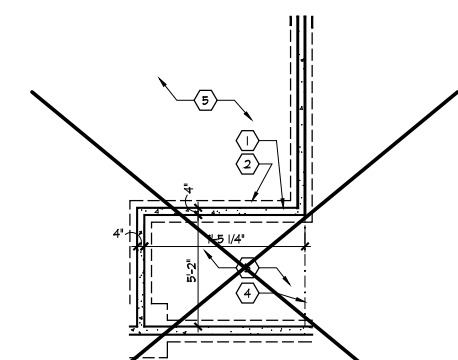
Mudroom - Dog wash option

Scale: 1/4" = 1'-0"



Mudroom - Half Bath option

Scale: 1/4" = 1'-0" YES



Mudroom - Extended Garage option

Scale: 1/4" = 1'-0"



Foundation Development Group, LLC & Bel Haven, LLC
Bel Haven
Beckett Road
West Chester, Ohio 45069

PROPRIETARY RIGHTS NOTICE
COPYRIGHT © 2019 EPCON COMMUNITIES FRANCHISING, INC. ALL RIGHTS ARE RESERVED IN THIS INFORMATION AND ALL RELATED ILLUSTRATIONS, PLANS, BLUEPRINTS, NOTICES, DRAWINGS, OR ANY OTHER TANGIBLE EXPRESSIONS THEREOF, WHICH ARE THE PROPERTY OF EPCON COMMUNITIES FRANCHISING, INC., 800 STONEHOUSE PARKWAY, DUBLIN, OHIO 43017, TELEPHONE (614) 883-3827. NO ONE MAY BUILD, LICENSE, TRANSFER, REPRODUCE OR DUPLICATE THIS WORK IN ANY MANNER WITHOUT THE WRITTEN AUTHORIZATION OF EPCON COMMUNITIES FRANCHISING, INC. THESE DRAWINGS SHALL BE USED IN CONFORMANCE WITH ALL LOCAL BUILDING, MECHANICAL, PLUMBING AND ELECTRICAL CODES AND SHALL MEET THE REQUIREMENTS OF THE HEALTH DEPARTMENT, FIRE MARSHAL, AMERICANS WITH DISABILITIES ACT ACCESSIBILITY GUIDELINES (ADAAG), THE FAIR HOUSING ACT ACCESSIBILITY GUIDELINES (FHAAG), AND SHALL BE CONSTRUCTED IN CONFORMANCE WITH STATE AND LOCAL ENERGY REQUIREMENTS.

Prototype Disk No.	Interim Page Revisions Revision	Date
		1/2/19

Architect Project Number
2019-044

Community Dates & Revisions	
Date Originated	20 DEC 2019
Bid	
Permit	
Construction	
Revisions	
▲	▲
▲	▲

Drawing Title
Foundation Plan
Options

Architectural Style
European Country
Sheet Number
A.100-OPT
D4 - 2017

GENERAL FOUNDATION NOTES

- SOIL BEARING CAPACITY ASSIGNED TO BE 2500 PSF AND SHALL BE VERIFIED BY SOILS ENGINEER PRIOR TO PLACEMENT OF BUILDING FOUNDATION. CONSULT ARCHITECT WHEN INADEQUATE SOIL CAPACITIES ARE FOUND.
- ALL DIMENSIONS ARE TO FACE OF FOUNDATION / BASEMENT WALL UNLESS NOTED OTHERWISE.
- HOLD DOWN TOP OF FOUNDATION WALL 8" AT ALL ENTRY DOORS TO ALLOW FOR EXTENSION OF FLOOR SLAB UNDER THE DOOR THRESHOLDS.
- PLUMBING CONTRACTOR TO USE ROUND BUCKETS FOR FORMED SLAB PENETRATIONS.
- CONCRETE CONTRACTOR TO INSTALL 1/2" EXP. JT. AROUND THE PERIMETER OF GARAGES.
- CONCRETE CONTRACTOR COORDINATE WITH PLUMBING FOR LOCATION OF BLOCKOUTS FOR UNDERSLAB LINES.
- CONCRETE CONTRACTOR - SEE FIRST FLOOR PLAN FOR SIDEWALKS AND PATIOS.
- CONCRETE CONTRACTOR TO VERIFY SLAB PENETRATION AT TUB/SINKER OPTIONS.
- SEE WALL SECTION SHEETS FOR ANCHOR BOLT SPECIFICATIONS.

1 Story Slab
Extra half bath by garage
Irrigation System
Humidifier Valve
Water line for coffee bar - need location
Laundry Tub

Gas Fireplace in bedroom and family room
Gas grill , Heater , Furnace and Cooktop

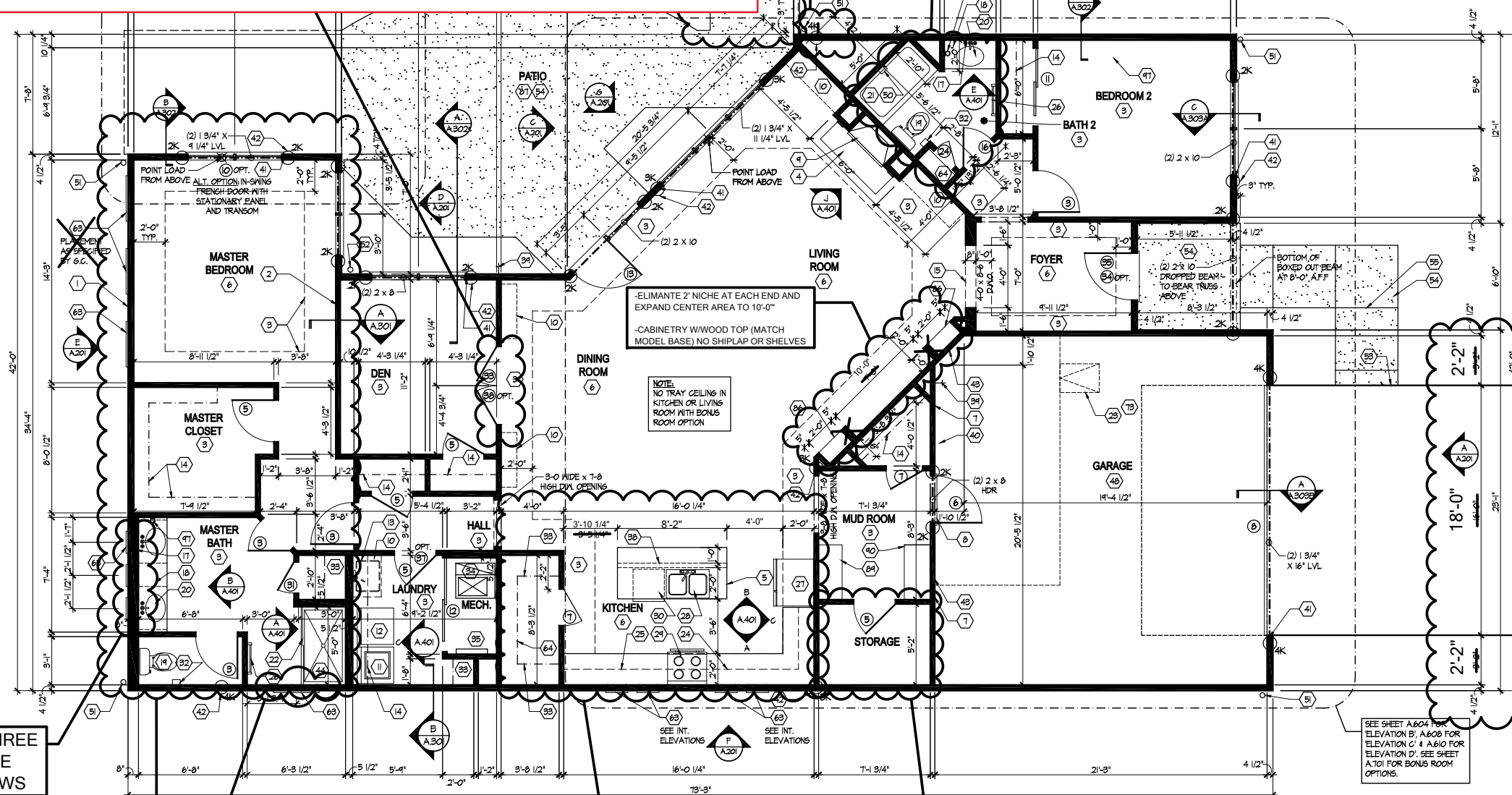
BUMPOUT GRILL APPROX (2'x5')
 CURVED PATIO AS SHOWN
 ADDITIONAL GAS LINE
 ROUGHED TO EXTERIOR WALL
 FOR FUTURE GAS GRILLE
 SEE SHEET
 A.101-OPT
 FOR OWNER
 SELECTIONS

GENERAL NOTES

1. PLAN DIMENSIONS ARE TO FACE OF ROUGH FRAMING, EXTERIOR WALL DIMENSIONS INCLUDE THICKNESS OF SHEATHING.
2. REFER TO SITE LAYOUT PLAN FOR BUILDING LOCATIONS AND ORIENTATIONS.
3. DOORS NOT OTHERWISE DIMENSIONED SHALL BE LOCATED WITH ROUGH OPENING 4" FROM INTERSECTING WALLS.
4. USE ONE CRIPPLE (JACK) STUD AND ONE FULL HEIGHT (KING) STUD UNDER BEAM AND HEADER BEARING LESS THAN 4'-0" AND ONE CRIPPLE STUD AND TWO FULL HEIGHT STUDS UNDER BEAM AND HEADER BEARING 4'-0" OR GREATER, UNLESS SHOWN OTHERWISE.
5. OPTIONAL GAS ROUGH-IN FOR COURTYARDS - LOCATION PER G.C.

FIRST FLOOR PLAN CODED NOTES

- (FIRST FLOOR UNIT PLANS ONLY)
 (ALL NOTES NOT APPLICABLE TO ALL SHEETS/UNIT TYPES)
1. EXTERIOR STUD WALL: 2 x 4 WOOD STUDS AT 16" O.C. WITH 1/2" DRYWALL ON ALL INTERIOR SURFACES, AND 1" ZIP SYSTEM "R-SHEATHING" ON EXTERIOR SURFACES. TYPICAL UNLESS NOTED OTHERWISE.
 2. INTERIOR STUD WALL: 2 x 4 WOOD STUDS AT 16" O.C. WITH 1/2" DRYWALL ON ALL FINISHED SURFACES - TYPICAL.
 3. FLAT DRYWALL CEILING @ 9'-0" A.F.F. - TYPICAL UNLESS NOTED OTHERWISE.
 4. 12" DEEP CERAMIC TILE HEARTH EXTENSION - CENTERED ON FIREBOX. SEE FLOOR PLAN FOR WIDTH.
 5. ISLAND AND BASE CABINETS & COUNTERTOP - FINISH ALL EDGES OF CABINETS & COUNTERTOP.
 6. TRAY CEILING @ 10'-0" A.F.F.
 7. PROVIDE FIBERGLASS BATT INSULATION IN GARAGE WALLS COMMON TO LIVING SPACE.
 8. GARAGE SLAB & FIRST FLOOR FLOOR AT BACK OF GARAGE - SLOPE 6" TO GARAGE DOOR.
 9. (OPTIONAL) PREFABRICATED METAL FIREBOX UNIT, PROVIDE GAS LINE, GAS LOG SET AND SCREEN. CONFIRM ROUGH OPENING OF FIREPLACE WITH PROJECT MANAGER.
 10. OPTIONAL CABINETS - SEE INTERIOR ELEVATIONS.
 11. WASHER LOCATION - PROVIDE WASHER BOX ON BACK WALL. WASHER ALWAYS LOCATED LEFT OF DRYER.
 12. DRYER LOCATION - DRYER VENT IN WALL.
 13. OPTIONAL UTILITY SINK AND FAUCET - INSTALL ROUGH-IN PLUMBING ONLY.
 14. SINGLE CLOSET ROD & SHELF (6" A.F.F.) - VINYL COATED WIRE WITH STANDARD SPACING.
 15. ARCHED OPENING, SPRING POINT @ 1'-8" A.F.F. TOP OF ARCH 8'-6" ABOVE SPRING POINT.
 16. LOCATION OF DOUBLE 2 X 4 STUD WALL.
 17. FRAMELESS MIRROR LOCATION - 42" HIGH X 2" SHORTER THAN VANITY TOP (1" EACH SIDE) - SET BOTTOM OF MIRROR AT TOP OF BACKSPLASH.
 18. VANITY BASE AND COUNTERTOP 31 1/2" A.F.F.
 19. TOILET & SEAT.
 20. SELF-RIMMING COUNTER LAVATORY AND FAUCET.
 21. 32" X 60" STANDARD TUB/SHOWER & FAUCET WITH CERAMIC TILE SURROUND.
 22. TEMPERED GLASS SHOWER ENCLOSURE AND DOOR.
 23. 22" X 54" OPTIONAL PULL-DOWN STAIR LOCATED BETWEEN TRUSSES ABOVE. DRYWALL ON STAIR SHALL BE MOUNTED WITH SCREWS INTO THE TOP & BOTTOM DOOR CROSS SUPPORTS WITH THE CENTER GLUED LEAVING NO SCREWS EXPOSED. (ATTIC ACCESS PANEL REQUIRED IF PULL-DOWN STAIR OPTION IS NOT CHOSEN. SEE NOTE #18 FOR MORE INFORMATION.)
 24. BASE CABINETS AND COUNTERTOP.
 25. LINE OF WALL CABINETS ABOVE.
 26. 24" LONG TOWEL BAR - 54" A.F.F. (56" A.F.F. ABOVE TOILET).
 27. REFRIGERATOR LOCATION - SEE INTERIOR ELEVATIONS FOR COLUMNS.
 28. DOUBLE BOWL SINK AND FAUCET.
 29. RANGE LOCATION.
 30. DISHWASHER LOCATION.
 31. 10" X 10" BUILT-UP COLUMN - TYPICAL. SEE DETAIL D, SHEET A304 FOR MORE INFORMATION.
 32. 8'-12" X 8'-12" FRAMING DIMENSION FOR COLUMN.
 33. TOILET PAPER DISPENSER.
 34. (4) 16" DEEP WIRE SHELVES (24", 42", 55", 68" A.F.F.) - STANDARD SPACING. TYPICAL AT LINEN CLOSETS AND PANTRIES, UNLESS NOTED OTHERWISE.
 35. FURNACE LOCATION.
 36. TANKLESS WATER HEATER.
 37. 10" X 10" BUILT-UP COLUMN / FILASTER - TYPICAL. SEE DETAIL F, SHEET A304 FOR MORE INFORMATION.
 38. 16'-0" X 8'-0" ATTIC STORAGE ABOVE - PROVIDE 3/4" APA RATED SUB-FLOORING ON BOTTOM CHORD OF TRUSSES. OSB SHEATHING RATED FOR 20 PSF LIVE LOAD IS PERMITTED AS AN ALTERNATE.
 39. 34" TALL FRAMED 1/2 WALL TO UNDERSIDE OF BAR COUNTERTOP.
 40. HOSE BIBS LOCATION.
 41. SURFACE MOUNTED ELECTRIC PANEL LOCATION. SEE DETAIL ON SHEET A304.
 42. PROVIDE (2) CRIPPLE STUDS (JACKS) UNDER ALL HEADERS IN OPENINGS OVER 48" WIDE - TYPICAL. SEE GENERAL NOTES FOR MORE INFORMATION.
 43. ORK INDICATES NUMBER OF FULL-HEIGHT (KING) STUDS AT BEARING LOCATIONS. MINIMUM 1/2" DRYWALL ON GARAGE SIDE.
 44. 32" X 60" STANDARD SHOWER BASE.
 45. CUSTOM TILED ROLL-IN SHOWER BASE - SEE PLAN FOR SIZE.
 46. WOOD GUARD RAIL - SEE DETAIL K ON SHEET A304.
 47. 12" WIDE (BOTTOM) X 8" WIDE (TOP) PYPON P.V.C. TAPERED COLUMN WRAP CWPMBX12X12TFT WITH CRAFTSMAN STYLE CAP AND BASE. SEE DETAIL P, SHEET A304 FOR DETAILS.
 48. FLAT DRYWALL CEILING ON UNDERSIDE OF BOTTOM CHORD OF ROOF TRUSSES OR FLOOR JOISTS.
 49. FLAT DRYWALL CEILING @ 8'-4" A.F.F.
 50. SOAP DISH - 5" HIGH X 11" WIDE.
 51. DOWNSPUT LOCATION.
 52. DOWNSPUT DISCHARGED INTO BLACK PIPE AND ROUTED UNDER WALKS OR PATIO.
 53. EDGE OF DRIVEWAY.
 54. 4" THICK SLAB TYPICAL @ CONCRETE WALKS/PORCHES/PATIOS.
 55. CONTROL JOINTS - TYPICAL.
 56. DASHED LINES INDICATE BOXED BEAM ABOVE - WIDTH TO MATCH COLUMN.
 57. 12" DEEP SHELF (60" A.F.F.) - VINYL COATED WIRE - STANDARD SPACING.
 58. SHOWER WALL 6'-0" A.F.F.
 59. OPTIONAL GARAGE SHELVING.
 60. OPTIONAL DESK.
 61. COURTYARD GATE AND FENCE LOCATION.
 62. DASHED LINE INDICATES OPTIONAL PATIO SECTION.
 63. OPTIONAL WINDOW.
 64. (4) 12" DEEP WIRE SHELVES (24", 42", 55", 68" A.F.F.) - STANDARD SPACING.
 65. 32" X 60" SHOWER BASE WITH BUILT-IN SEAT.
 66. HARDBOARD TREADS AND RISERS.
 67. WOOD HANDRAIL - 34" ABOVE STAIR TREADS. RETURN ENDS TO WALL OR NEVEL POST.
 68. SINGLE BOWL SINK AND FAUCET.
 69. 20" RANGE LOCATION.
 70. FLAT DRYWALL CEILING @ 8'-0" A.F.F.
 71. LINE OF BREAK OF SLOPED DRYWALL CEILING - FOLLOW BOTTOM CHORD OF ROOF TRUSSES OR RAFTERS ABOVE.
 72. SLOPED CEILING AREA ABOVE.
 73. ATTIC ACCESS PANEL: 22" X 30" MINIMUM. PANEL TO BE 6" MIN. ABOVE BASE IF LOCATED IN KNEE WALL. PANEL TO HAVE 1" QUARTER ROUND MOLDING AROUND EDGE. PANEL SHALL BE WEATHER-STRIPPED AND INSULATED TO A LEVEL EQUIVALENT TO THE INSULATION ON THE SURROUNDING SURFACES. IF IN THE CEILING, A BATTLE IS REQUIRED TO CONTAIN LOOSE-FILL INSULATION.
 74. UNDER THE COUNTER REFRIGERATOR LOCATION.
 75. FLAT DRYWALL CEILING @ 7'-0" A.F.F.
 76. HALF WALL @ 36" A.F.F. WITH 1 X 6 HARDWOOD CAP.
 77. SINGLE CLOSET ROD & SHELF (48" A.F.F.) - VINYL COATED WIRE WITH STANDARD SPACING.
 78. KNEE WALL: 2 x 4 WOOD STUDS AT 16" O.C. WITH 1/2" DRYWALL ON ALL INTERIOR SURFACES, AND 1/4" OSB BACKER PANEL ON EXTERIOR SURFACES - TYPICAL. RUN FROM FLOOR STRUCTURE BELOW TO UNDERSIDE OF ROOF FRAMING.
 79. WIDTH OF HEADER TO MATCH WIDTH OF COLUMN AND BOXED BEAMS (OR DIMS. AS SHOWN).
 80. FULL HEIGHT PANTRY CABINET - SEE INTERIOR ELEVATIONS.
 81. DASHED LINE INDICATES 8" CEILING SOFFIT FOR SANITARY LINES FROM BONUS ROOM.
 82. 10 X 10 P.T. SOLID WOOD COLUMN WITH BEVELED TOP.
 83. PRESERVATIVE PRESSURE TREATED 2 X 8 PERGOLA RAFTERS @ 16" O.C. - SEE SECTIONS FOR MORE DETAIL.
 84. PRESERVATIVE PRESSURE TREATED 2 X 12 PERGOLA BEAMS - SEE SECTIONS FOR MORE DETAIL.
 85. ZERO-THRESHOLD SHOWER. SEE DETAIL ON SHEET A304.
 86. BUILT-IN BOOKSHELVES.
 87. CONCRETE PATIO - SEE LANDSCAPING PLANS FOR OPTIONS & DETAILS.
 88. BUILT-IN TILED SHOWER BENCH - SEE DETAIL ON SHEET A304.
 89. OPTIONAL 42" WIDE X 18" DEEP BASE CABINET PER G.C.
 90. OPTIONAL 42" BUILT-IN BENCH PER G.C.
 91. DOGS WASH SHOWER BASE WITH 6" HIGH TILED STEP AND 18" HIGH TILED HALF WALL PER G.C.
 92. OPTIONAL UNDER THE COUNTER WINE REFRIGERATOR.
 93. PROVIDE INSULATION IN SALES OFFICE WALLS AND CEILING - SEE WALL SECTION.
 94. 2 x 4 WALL WITH GLASS INSERTS AND WOOD CAP - SEE DETAILS ON SHEET A.614 FOR MORE INFORMATION.
 95. DOTTED LINE INDICATES AREA OF REQUIRED CLEARANCE FOR A.D.A. COMPLIANCE.
 96. CABINETS BY OWNER.
 97. TOWEL RING.



First Floor Plan

Scale: 1/4" = 1'-0"

ADD THREE SQUARE WINDOWS

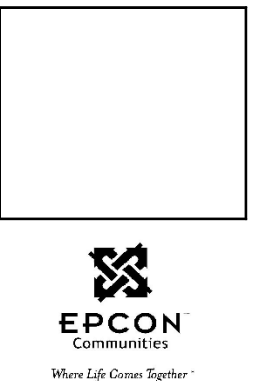
DELUXE OWNER SUITE - SEE SHEET A.101R

TRANSOM WINDOW IN OWNER'S SHOWER

SEE A.100-OPT AND A.101-OPT FOR EXTENDED KITCHEN OPTION

CHECK ISLAND LOCATION & SIZE AS IT IS DIFF THAN PLANS

SEE A.100-OPT AND A.101-OPT FOR 1/2 BATH OPTION



Foundation Development
Group, LLC & Bel Haven, LLC
Bel Haven
Beckett Road
West Chester, Ohio 45069

PROPRIETARY RIGHTS NOTICE
 COPYRIGHT 2019 EPCON COMMUNITIES FRANCHISING, INC.
 ALL RIGHTS ARE RESERVED IN THE INFORMATION AND ALL RELATED ILLUSTRATIONS, PLANS, BLUEPRINTS, SKETCHES, DRAWINGS, OR ANY OTHER TANGIBLE, EXPRESSIONS THEREOF, WHICH ARE THE PROPERTY OF EPCON COMMUNITIES FRANCHISING, INC. OR STONEMENBERG FRANCHISE, CO., INC. OR ANY OTHER PARTY. NO ONE MAY BUILD, REPRODUCE, TRANSMIT, REPRODUCE OR DUPLICATE THIS WORK IN ANY WAY WITHOUT THE WRITTEN AUTHORIZATION OF EPCON COMMUNITIES FRANCHISING, INC.

THESE DRAWINGS SHALL BE USED IN CONFORMANCE WITH ALL LOCAL BUILDING, MECHANICAL, PLUMBING AND ELECTRICAL CODES AND SHALL MEET THE REQUIREMENTS OF THE HEALTH DEPARTMENT, FIRE MARSHAL, AMERICANS WITH DISABILITIES ACT ACCESSIBILITY GUIDELINES (ADA), THE FAIR HOUSING ACT ACCESSIBILITY GUIDELINES (FHA), AND SHALL BE CONSTRUCTED IN CONFORMANCE WITH STATE AND LOCAL ENERGY REQUIREMENTS.

Prototype Disk No.	Interim Page Revision	Date
		11/12/19

Architect Project Number
 2019-044

Community Dates & Revisions	
Date Originated	20 DEC 2019
Bid Permit Construction	
Revisions	
▲	
▲	
▲	

Drawing Title
First Floor Plan

Architectural Style
 European Country

Sheet Number
A.101
 D4 - 2017



EPCON
Communities

Where Life Comes Together™

Foundation Development
Group, LLC & Bel Haven, LLC
Bel Haven
Beckett Road
West Chester, Ohio 45069

PROPRIETARY RIGHTS NOTICE
COPYRIGHT 2017 EPCON COMMUNITIES FRANCHISING, INC.
ALL RIGHTS ARE RESERVED IN THIS INFORMATION AND ALL
RELATED ILLUSTRATIONS, PLANS, BLUEPRINTS, SKETCHES,
DRAWINGS, OR ANY OTHER TANGIBLE EXPRESSIONS
THEREOF, WHICH ARE THE PROPERTY OF EPCON
COMMUNITIES FRANCHISING, INC. NO STOREHOUSE
PARKWAY, DUBLIN, OHIO 43017, TELEPHONE 614.882.3827. NO
ONE MAY BUILD, LICENSE, TRANSFER, REPRODUCE OR
DUPLICATE THIS WORK IN ANY WAY WITHOUT THE WRITTEN
AUTHORIZATION OF EPCON COMMUNITIES FRANCHISING, INC.

THESE DRAWINGS SHALL BE USED IN CONFORMANCE WITH ALL
LOCAL BUILDING, MECHANICAL, PLUMBING AND ELECTRICAL
CODES AND SHALL MEET THE REQUIREMENTS OF THE HEALTH
DEPARTMENT, FIRE MARSHALL, AMERICANS WITH DISABILITIES
ACT ACCESSIBILITY GUIDELINES (ADAAG), THE FAIR HOUSING
ACT ACCESSIBILITY GUIDELINES (FHAG), AND SHALL BE
CONSTRUCTED IN CONFORMANCE WITH STATE AND LOCAL
ENERGY REQUIREMENTS.

Prototype Disk No.	Interim Page Revisions	Date
		2/17/12

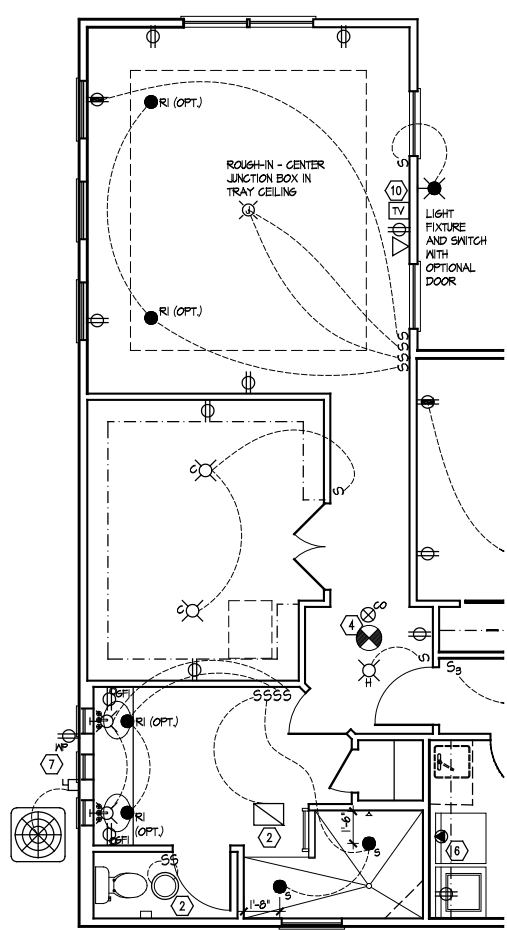
Architect Project Number
2019-044

Community Dates & Revisions	
Date Originated	20 DEC 2019
Bid	
Permit	
Construction	
Revisions	
▲	▲
▲	▲
▲	▲

Drawing Title
Deluxe Master Suite
Plans and Electrical

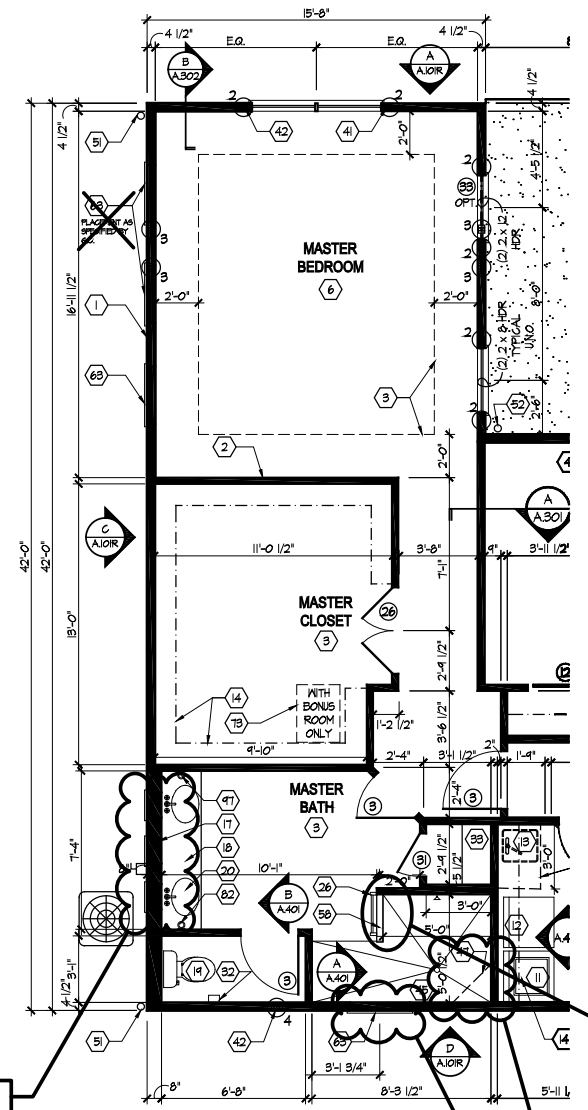
Architectural Style
European Country

Sheet Number
A.101R
D4 - 2017



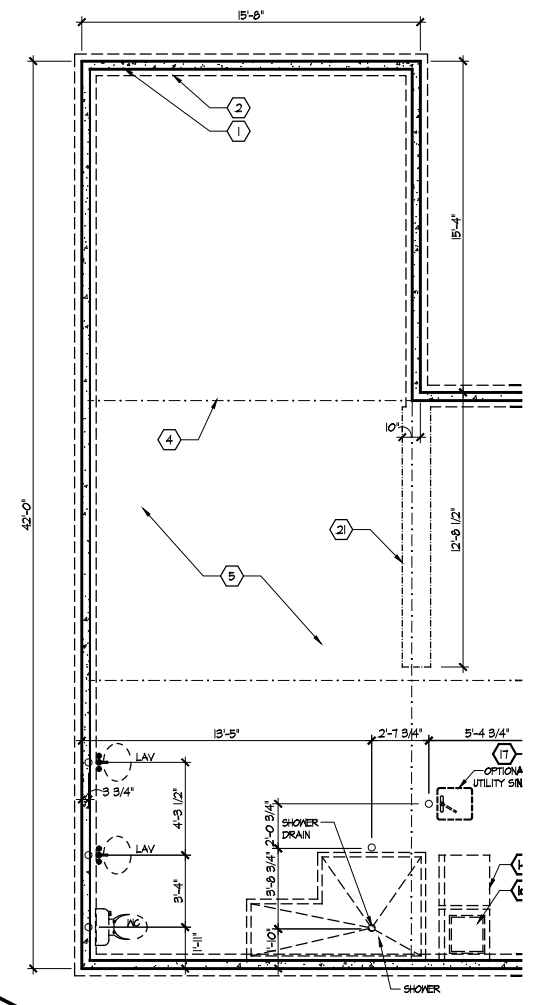
Electrical Plan - First Floor

Scale: 1/4" = 1'-0" SEE SHEET E.100 FOR ELECTRICAL PLAN LEGEND AND BASE ELECTRICAL PLAN.



Partial First Floor Plan

Scale: 1/4" = 1'-0" SEE SHEET A.101 FOR PLAN CODED NOTES AND BASE FLOOR PLAN AND S.103, S.104 FOR SHEAR WALL INFO.



Partial Foundation Plan

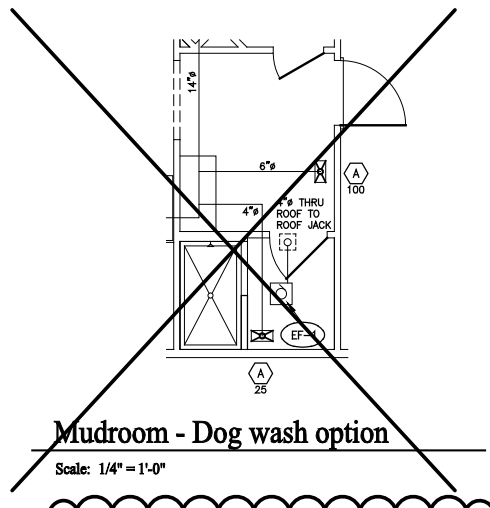
Scale: 1/4" = 1'-0" SEE SHEET A.100 FOR FOUNDATION CODED NOTES AND BASE FOUNDATION PLAN.

ADD THREE WINDOWS

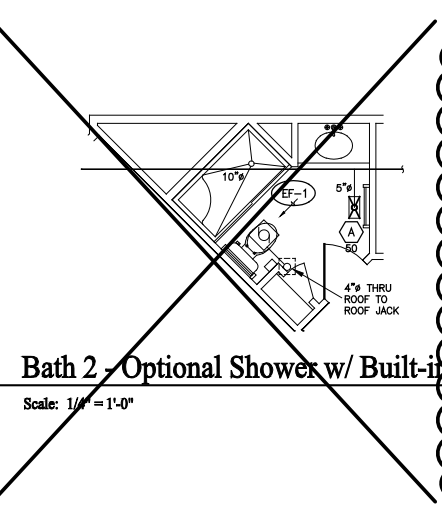
(2) STORAGE NICHE

CORNER SHOWER SEAT

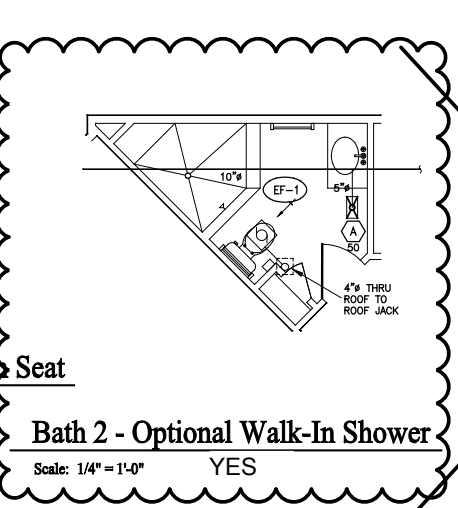
TRANSOM WINDOW



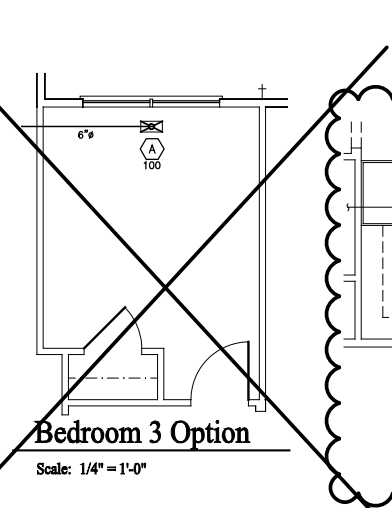
Mudroom - Dog wash option
Scale: 1/4" = 1'-0"



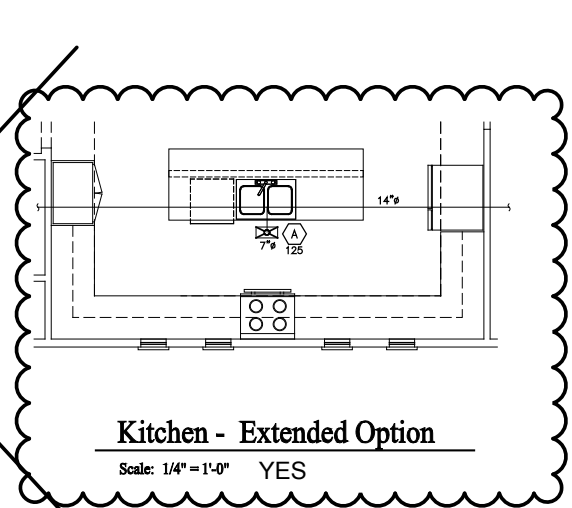
Bath 2 - Optional Shower w/ Built-in Seat
Scale: 1/4" = 1'-0"



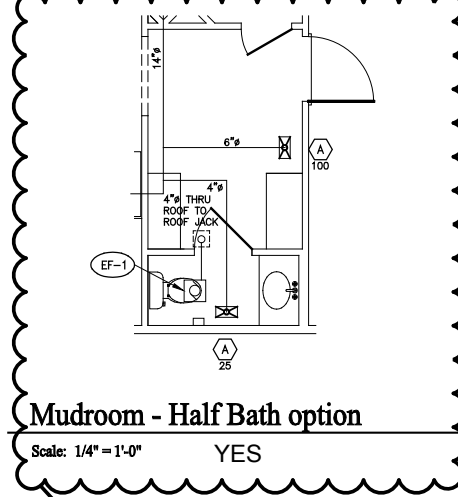
Bath 2 - Optional Walk-In Shower
Scale: 1/4" = 1'-0"



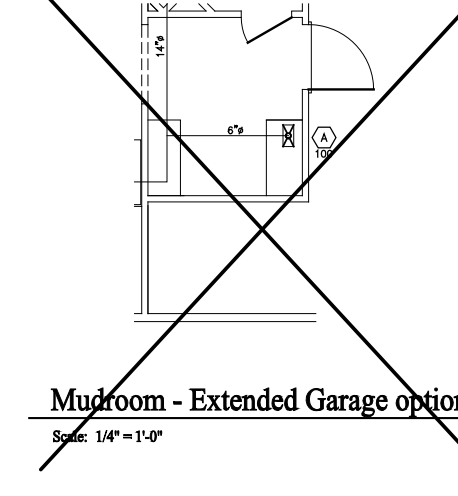
Bedroom 3 Option
Scale: 1/4" = 1'-0"



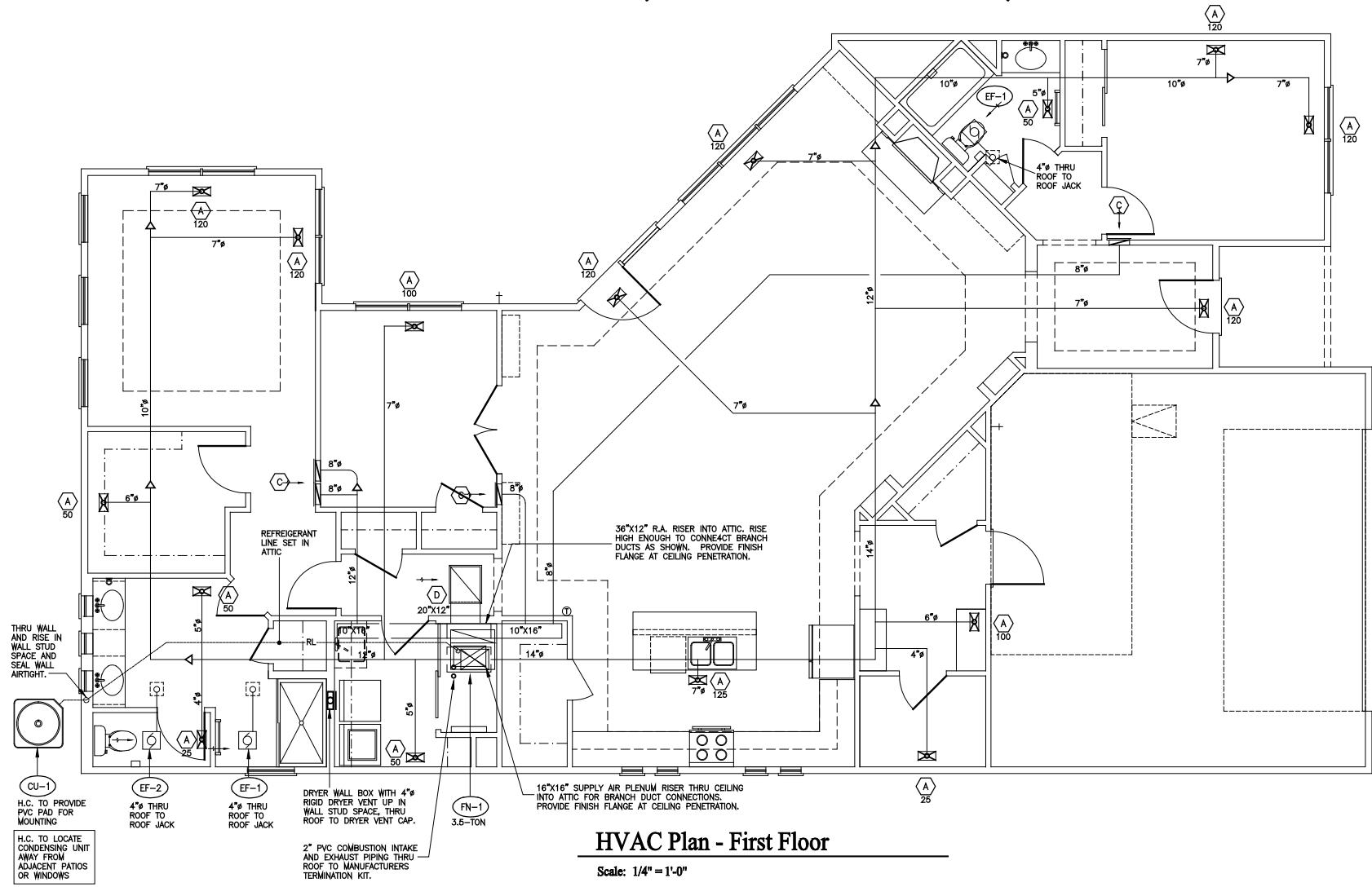
Kitchen - Extended Option
Scale: 1/4" = 1'-0"



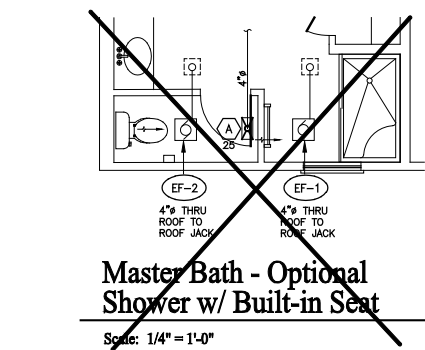
Mudroom - Half Bath option
Scale: 1/4" = 1'-0"



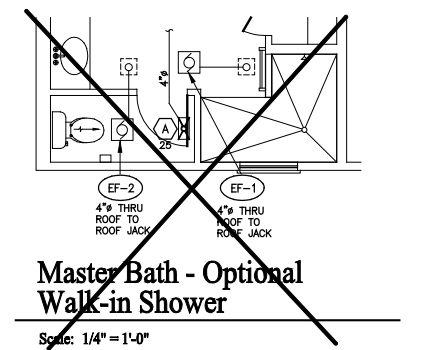
Mudroom - Extended Garage option
Scale: 1/4" = 1'-0"



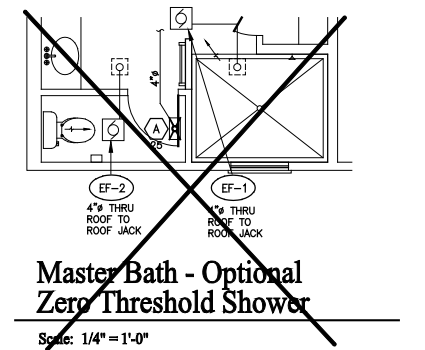
HVAC Plan - First Floor
Scale: 1/4" = 1'-0"



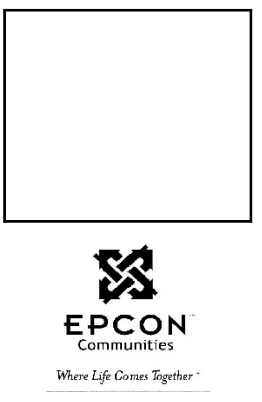
Master Bath - Optional Shower w/ Built-in Seat
Scale: 1/4" = 1'-0"



Master Bath - Optional Walk-in Shower
Scale: 1/4" = 1'-0"



Master Bath - Optional Zero Threshold Shower
Scale: 1/4" = 1'-0"



Foundation Development
Group, LLC & Bel Haven, LLC
Bel Haven
Beckett Road
West Chester, Ohio 45069

PROPRIETARY RIGHTS NOTICE
COPYRIGHT 2017 EPCON COMMUNITIES FRANCHISING, INC.
ALL RIGHTS ARE RESERVED IN THIS INFORMATION AND ALL RELATED ILLUSTRATIONS, PLANS, BLUEPRINTS, SKETCHES, DRAWINGS, OR ANY OTHER TANGIBLE EXPRESSIONS THEREOF, WHICH ARE THE PROPERTY OF EPCON COMMUNITIES FRANCHISING, INC. 800 STONEHENGE PARKWAY, DUBLIN, OHIO 43017, TELEPHONE 848.882.8827. NO ONE MAY REPRODUCE, TRANSFER, REPRODUCE OR DUPLICATE THIS WORK IN ANY WAY WITHOUT THE WRITTEN AUTHORIZATION OF EPCON COMMUNITIES FRANCHISING, INC.

THESE DRAWINGS SHALL BE USED IN CONFORMANCE WITH ALL LOCAL BUILDING, MECHANICAL, PLUMBING AND ELECTRICAL CODES AND SHALL MEET THE REQUIREMENTS OF THE HEALTH DEPARTMENT, THE MARSHALL, ASSURANCE WITH DISABILITIES ACT ACCESSIBILITY GUIDELINES (ADAAG), THE FAIR HOUSING ACT ACCESSIBILITY GUIDELINES (FHAG), AND SHALL BE CONSTRUCTED IN CONFORMANCE WITH STATE AND LOCAL ENERGY REQUIREMENTS.

Prototype Disk No.	Interim Page Revision	Revisions Date
		3/20/18

Architect Project Number

Community Dates & Revisions	
Date Originated	20 DEC 2019
Bid	
Permit	
Construction	
Revisions	

Drawing Title
HVAC Plan

Architectural Style
European Country

Sheet Number
H.101
D4 - 2017