

ALL RIGHTS ARE RESERVED IN THIS INFORMATION AND ALL RELATED ILLUSTRATIONS, PLANS, BLUEPRINTS, SKETCHES, DRAWINGS OR OTHER TANGIBLE EXPRESSIONS THEREOF, WHICH ARE THE PROPERTY OF EPCON COMMUNITIES FRANCHISING, INC. 500 STONEHENGE PARKWAY, DUBLIN, OH, 43017, TELEPHONE 614.652.3527. NO ONE MAY BUILD, LICENSE, TRANSFER, REPRODUCE OR DUPLICATE THIS WORK IN ANY WAY WITHOUT THE WRITTEN AUTHORIZATION OF EPCON COMMUNITIES FRANCHISING, INC.

THESE DRAWINGS SHALL BE USED IN CONFORMANCE WITH ALL LOCAL BUILDING, MECHANICAL, PLUMBING AND ELECTRICAL CODES AND SHALL MEET THE REQUIREMENTS OF THE HEALTH DEPARTMENT, FIRE MARSHALL, AMERICANS WITH DISABILITIES ACT, ACCESSIBILITY GUIDELINES (ADAAG), THE FAIR HOUSING ACT ACCESSIBILITY GUIDELINES (FHAAG), AND SHALL BE CONSTRUCTED IN CONFORMANCE WITH STATE AND LOCAL ENERGY REQUIREMENTS.

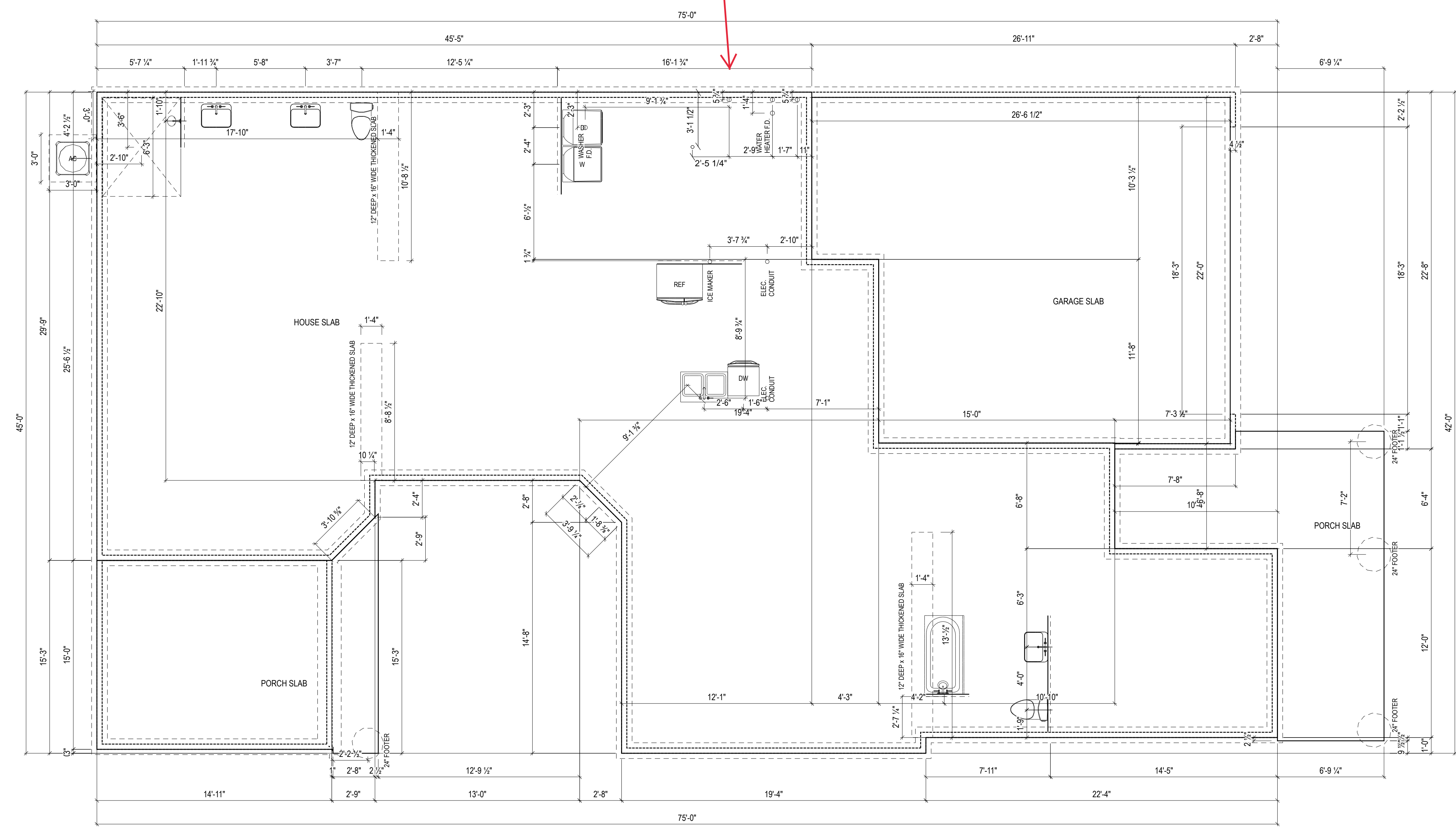
ISSUE	DESCRIPTION	DATE
01	BUILDER SET	1/5/2022

PROJECT  
PLAN: Lot 39  
ELEV: Elevation E - Euro Country

DRAWING TITLE  
**FOUNDATION PLAN**

SHEET NUMBER  
**A-050**

UTILITY  
SINK -  
VERIFY IN  
FIELD



ALL RIGHTS ARE RESERVED IN THIS INFORMATION AND ALL RELATED ILLUSTRATIONS, PLANS, BLUEPRINTS, SKETCHES, DRAWINGS OR OTHER TANGIBLE EXPRESSIONS THEREOF, WHICH ARE THE PROPERTY OF EPCON COMMUNITIES FRANCHISING, INC. 500 STONEHENGE PARKWAY, DUBLIN, OH, 43017, TELEPHONE 614.652.3527. NO ONE MAY BUILD, LICENSE, TRANSFER, REPRODUCE OR DUPLICATE THIS WORK IN ANY WAY WITHOUT THE WRITTEN AUTHORIZATION OF EPCON COMMUNITIES FRANCHISING, INC.

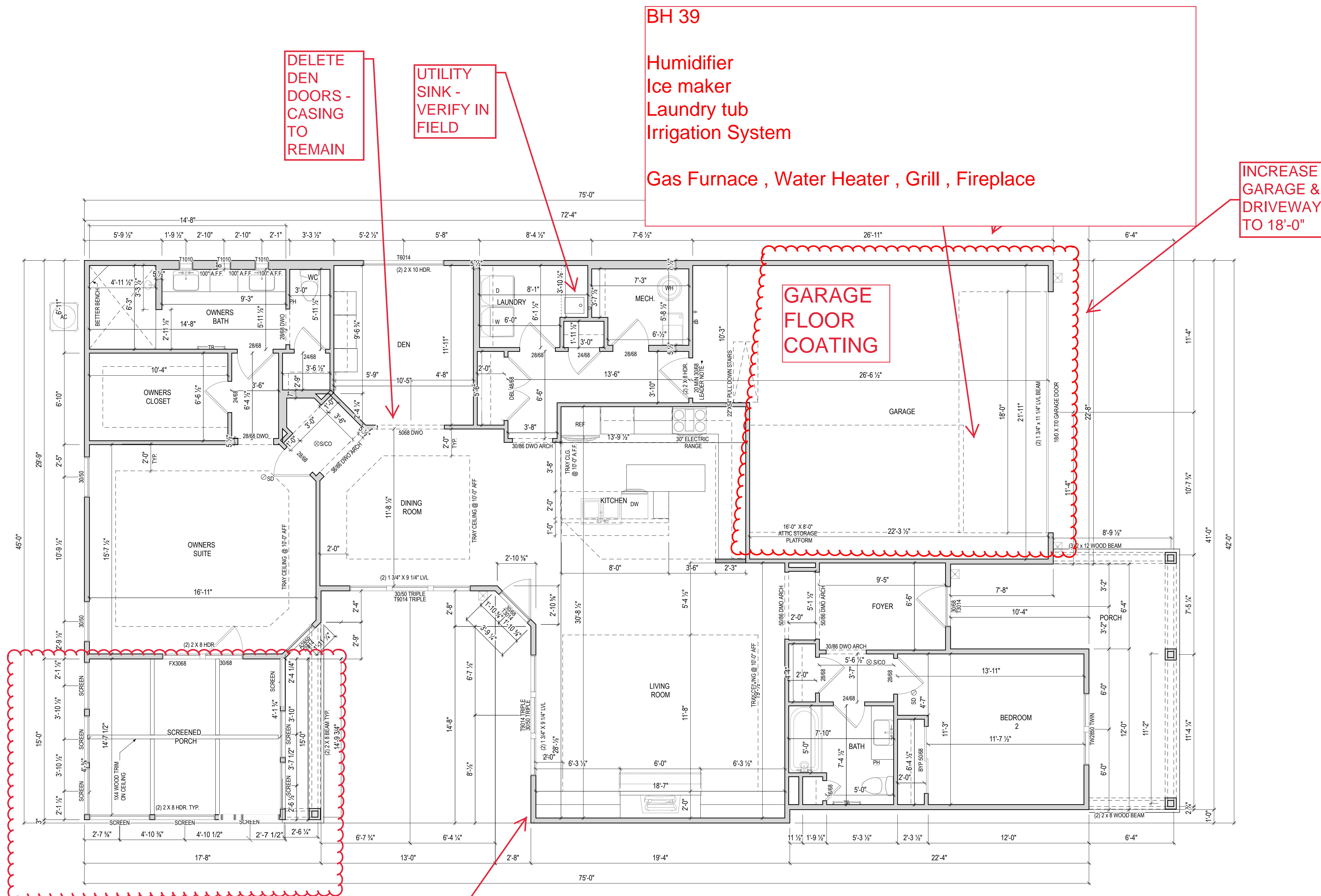
THESE DRAWINGS SHALL BE USED IN CONFORMANCE WITH ALL LOCAL BUILDING, MECHANICAL, PLUMBING AND ELECTRICAL CODES AND SHALL MEET THE REQUIREMENTS OF THE HEALTH DEPARTMENT, FIRE MARSHALL, AMERICANS WITH DISABILITIES ACT, ACCESSIBILITY GUIDELINES (ADAAG), THE FAIR HOUSING ACT ACCESSIBILITY GUIDELINES (FHAAG), AND SHALL BE CONSTRUCTED IN CONFORMANCE WITH STATE AND LOCAL ENERGY REQUIREMENTS.

ISSUE	DESCRIPTION	DATE
01	BUILDER SET	1/5/2022

PROJECT  
PLAN: Lot 39  
ELEV: Elevation E - Euro Country

DRAWING TITLE  
**FIRST FLOOR**

SHEET NUMBER  
**A-100**



DELETE DEN DOORS - CASING TO REMAIN

UTILITY SINK - VERIFY IN FIELD

**BH 39**  
Humidifier  
Ice maker  
Laundry tub  
Irrigation System  
  
Gas Furnace , Water Heater , Grill , Fireplace

INCREASE GARAGE & DRIVEWAY TO 18'-0"

GARAGE FLOOR COATING

EXTENDED SCREENED PORCH - VERIFY IN FIELD

ADDITIONAL GAS LINE ROUGHED

NOTES:  
- ARCHED OPENINGS: SPRING POINT @ 78" A.A.F.  
TOP OF ARCH 8'-6" ABOVE SPRING POINT.

⊙ SD - Smoke Detector utilizing the Ionization method  
⊗ S/CO - Combination Carbon Monoxide/Photoelectric & Ionization Smoke Detector



