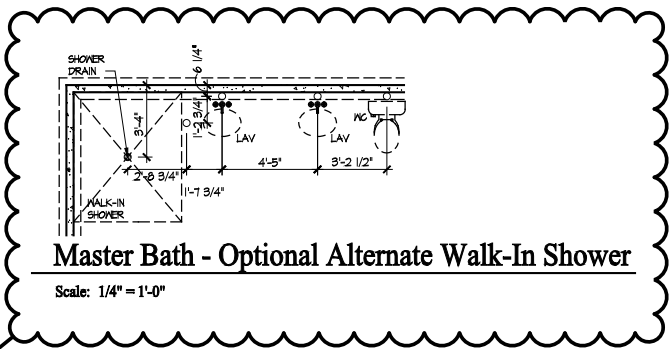


Foundation Plan

Scale: 1/4" = 1'-0"

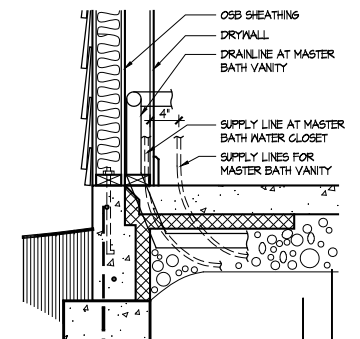
SEE SHEET A101 FOR SCREENED PORCH OPTION.



Master Bath - Optional Alternate Walk-In Shower

Scale: 1/4" = 1'-0"

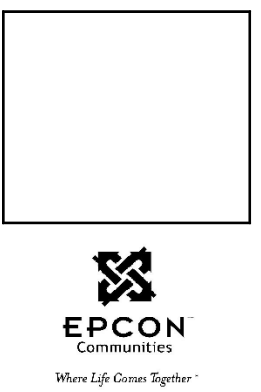
YES



Master Bath Plumbing Detail - Vanity/W.C.

Scale: 1/4" = 1'-0"

- FOUNDATION CODED NOTES**
(FOUNDATION PLAN ONLY)
(ALL NOTES NOT APPLICABLE TO ALL SHEETS)
- POURED CONCRETE FOUNDATION STEM WALL (TYPICAL) - SEE WALL SECTIONS SHEETS.
 - 12" WIDE CONCRETE FOOTING WITH STEEL BAR REINFORCING AS REQUIRED BY SOILS ENGINEER - MAINTAIN BOTTOM OF FOOTING A MINIMUM 30" BELOW FINISH GRADE AND TOP OF FOOTING SET 12" BELOW FINISHED FLOOR - TYPICAL.
 - PROVIDE MIN. 2 ANCHOR BOLTS EACH SIDE OF GARAGE DOORS.
 - SAN CUT CONTROL JOINT IN CONCRETE SLAB, 1/8" WIDE x 1/4" DEEP - TYPICAL.
 - 4" GLASS FIBER REINFORCED CONCRETE FLOOR SLAB OVER 4 MIL. POLYETHYLENE VAPOR BARRIER AND 4" GRAVEL BASE - TYPICAL.
 - 4" GLASS FIBER REINFORCED CONCRETE FLOOR SLAB OVER 4" GRAVEL BASE - TYPICAL IN GARAGES.
 - PROVIDE WEATHERLIP @ GARAGE DOOR OPENINGS - SEE DETAIL D, SHEET A301.
 - PIPE LOCATION CENTERED ON WALL ABOVE.
 - NO STEM WALL AT GARAGE DOOR OPENINGS.
 - WASHER ALWAYS LOCATED LEFT OF DRYER.
 - ELECTRICAL CONDUIT UNDER SLAB FOR ELECTRICAL OUTLET AT KITCHEN ISLAND.
 - ELECTRICAL CONDUIT SLAB PENETRATION.
 - 8" DEEP X 12" WIDE THICKENED SLAB WITH (2) NO. 4 REBAR CONTINUOUS, TYPICAL UNDER ALL BEARING WALLS.
 - DASHED LINES INDICATE LOCATION OF PLUMBING FIXTURES ABOVE - SHOWN FOR REFERENCE ONLY.
 - 10" WIDE X 10" DEEP CONCRETE PIER WITH 24" DIA. FOOTING. MAINTAIN BOTTOM OF FOOTING A MINIMUM 30" BELOW FINISH GRADE AND TOP OF PIER SET 6" BELOW FINISHED FLOOR.
 - DOTTED LINE INDICATES WALL LINE OF BASE UNIT.
 - 2'-6" x 2'-6" x 8" DEEP CONCRETE FOOTINGS WITH (2) NO. 4 REBAR EACH WAY (OR SIZE AS SHOWN).
 - 24" WIDE CONCRETE FOOTING WITH STEEL BAR REINFORCING AS REQUIRED BY SOILS ENGINEER - MAINTAIN BOTTOM OF FOOTING A MINIMUM 30" BELOW FINISH GRADE AND TOP OF FOOTING SET 12" BELOW FINISHED FLOOR.
 - 8" DEEP X 16" WIDE THICKENED SLAB WITH (2) NO. 4 REBAR CONTINUOUS, TYPICAL UNDER ALL BEARING WALLS.
 - 8" DEEP CONCRETE FOOTING WITH (2) NO. 4 REBAR EACH WAY - SEE PLANS FOR SIZE.
 - 16" WIDE CONCRETE FOOTINGS WITH STEEL BAR REINFORCING AS REQUIRED BY SOILS ENGINEER - MAINTAIN BOTTOM OF FOOTING A MINIMUM 30" BELOW FINISH GRADE AND TOP OF FOOTING SET 12" BELOW FINISHED FLOOR - TYPICAL.
 - 24" DIA. FOOTING - MAINTAIN BOTTOM OF FOOTING A MINIMUM 32" BELOW FINISH GRADE.
 - 12" DEEP X 16" WIDE THICKENED SLAB WITH (2) NO. 4 REBAR CONTINUOUS, TYPICAL UNDER ALL INTERIOR SHEAR WALLS.
 - PLUMBER TO PROVIDE 4" PVC SLEEVE FOR WATER AND 4" SANITARY LINE FOR INSTALLATION BY FOOTER CONTRACTOR.
- GENERAL FOUNDATION NOTES**
- SOIL BEARING CAPACITY ASSUMED TO BE 2500 PSF AND SHALL BE VERIFIED BY SOILS ENGINEER PRIOR TO PLACEMENT OF BUILDING FOUNDATION. CONSULT ARCHITECT WHEN INADEQUATE SOIL CAPACITIES ARE FOUND.
 - ALL DIMENSIONS ARE TO FACE OF FOUNDATION / BASEMENT WALL UNLESS NOTED OTHERWISE.
 - HOLD DOWN TOP OF FOUNDATION WALL 8" AT ALL ENTRY DOORS TO ALLOW FOR EXTENSION OF FLOOR SLAB UNDER THE DOOR THRESHOLDS.
 - PLUMBING CONTRACTOR TO USE ROUND BUCKETS FOR FORMED SLAB PENETRATIONS.
 - CONCRETE CONTRACTOR TO INSTALL 1/2" EXP. JT. AROUND THE PERIMETER OF GARAGES.
 - CONCRETE CONTRACTOR COORDINATE WITH PLUMBING FOR LOCATION OF BLOCKOUTS FOR UNDERSLAB LINES.
 - CONCRETE CONTRACTOR - SEE FIRST FLOOR PLAN FOR SIDEWALKS AND PATIOS.
 - CONCRETE CONTRACTOR TO VERIFY SLAB PENETRATION AT TUB/SHOWER OPTIONS.



Foundation Development
Group, LLC & Bel Haven, LLC
Bel Haven
Beckett Road
West Chester, Ohio 45069

PROPRIETARY RIGHTS NOTICE
COPYRIGHT 2017 EPCON COMMUNITIES FRANCHISING, INC.
ALL RIGHTS ARE RESERVED IN THIS INFORMATION AND ALL RELATED ILLUSTRATIONS, PLANS, BLUEPRINTS, SKETCHES, DRAWINGS, OR ANY OTHER TANGIBLE, EXPRESSIONS THEREOF, WHICH ARE THE PROPERTY OF EPCON COMMUNITIES FRANCHISING, INC. 600 STOREHOUSE PARKWAY, DUBLIN, OHIO 43017, TELEPHONE 614.882.2877. NO ONE MAY BUILD, LOAN, TRANSFER, REPRODUCE OR DUPLICATE THIS WORK IN ANY WAY WITHOUT THE WRITTEN AUTHORIZATION OF EPCON COMMUNITIES FRANCHISING, INC.
THESE DRAWINGS SHALL BE USED IN CONFORMANCE WITH ALL LOCAL, BUILDING, MECHANICAL, PLUMBING AND ELECTRICAL CODES AND SHALL MEET THE REQUIREMENTS OF THE HEALTH DEPARTMENT, FIRE MARSHAL, AMERICANS WITH DISABILITIES ACT ACCESSIBILITY GUIDELINES (ADAAG), THE FAIR HOUSING ACT ACCESSIBILITY GUIDELINES (FHAG), AND SHALL BE CONSTRUCTED IN CONFORMANCE WITH STATE AND LOCAL ENERGY REQUIREMENTS.

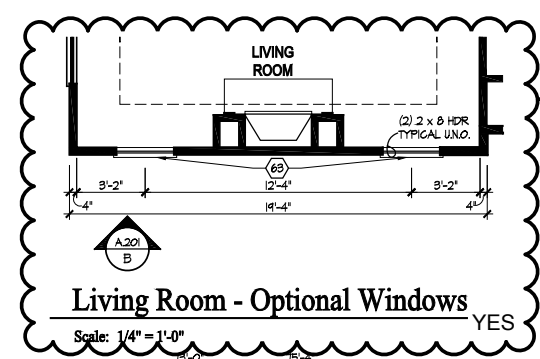
Prototype Disk No.	Interim Revision	Page Revisions Date
		4/28/10

Architect Project Number
2019-044

Community Dates & Revisions	
Date Originated	20 FEB 2020
Bid Permit Construction	
Revisions	▲ ▲ ▲

Drawing Title
Foundation Plan

Architectural Style
European Country
Sheet Number
A.100
D2+M Bonus 2010



OPTIONAL ALTERNATE WALK-IN SHOWER

CORNER SHOWER SEAT

REMOVE WING WALL

NO TRAY IN DINING ROOM

TRANSOM WINDOWS NEXT TO FIREPLACE

MOVE SINK TO BE CENTER ON KITCHEN ISLAND

TRANSOM ABOVE DOOR

GENERAL NOTES

1. EXTERIOR WALL DIMENSIONS INCLUDE THICKNESS OF SHEATHING.
2. REFER TO SITE LAYOUT PLAN FOR BUILDING LOCATIONS AND ORIENTATIONS.
3. DOORS NOT OTHERWISE DIMENSIONED SHALL BE LOCATED WITH ROUGH OPENING 3" FROM INTERSECTING WALLS.
4. AT SECOND FLOOR WALL LOCATIONS WITH PARALLEL FLOOR JOISTS/TRUSSES - PROVIDE 2 X BLOCKING FULL DEPTH OF FLOOR STRUCTURE BETWEEN JOISTS/TRUSSES @ 24" O.C.

FIRST FLOOR PLAN CODED NOTES

- (FIRST FLOOR UNIT PLANS ONLY)
(ALL NOTES NOT APPLICABLE TO ALL SHEETS)
1. EXTERIOR STUD WALL - 2 X 4 WOOD STUDS AT 16" O.C. WITH 1/2" DRYWALL ON ALL INTERIOR SURFACES AND 7/16" OSB SHEATHING ON EXTERIOR SURFACES - TYPICAL.
 2. INTERIOR STUD WALL - 2 X 4 WOOD STUDS AT 16" O.C. WITH 1/2" DRYWALL ON ALL FINISHED SURFACES - TYPICAL.
 3. FLAT DRYWALL CEILING @ 9'-0" A.F.F. - TYPICAL UNLESS NOTED OTHERWISE.
 4. 20" DEEP X 60" WIDE GRANITE HEARTH EXTENSION - CENTERED ON FIREBOX.
 5. ISLAND BASE CABINETS + COUNTERTOP - FINISH ALL EDGES OF CABINETS + COUNTERTOP.
 6. TRAY CEILING @ 10'-0" A.F.F.
 7. PROVIDE FIBERGLASS BATT INSULATION IN GARAGE WALLS COMMON TO LIVING SPACE.
 8. MAINTAIN 4" MINIMUM ELEVATION CHANGE BETWEEN GARAGE FLOOR + FINISHED FIRST FLOOR.
 9. PREFABRICATED METAL FIREBOX UNIT HEARTH + HOME MODEL DV8T25B1 (OR SIMILAR), PROVIDE GAS LINE, GAS LOG SET AND SCREEN - ROUGH OPENING 31" WIDE X 34 3/4" HIGH X 18" DEEP (26" DEEP WITH BUILT-IN CABINERY OPTION).
 10. OPTIONAL CABINETS - SEE INTERIOR ELEVATIONS.
 11. WASHER LOCATION - PROVIDE WASHER BOX ON BACK WALL. WASHER ALWAYS LOCATED LEFT OF DRYER.
 12. DRYER LOCATION - DRYER VENT IN WALL.
 13. OPTIONAL UTILITY SINK AND FAUCET - INSTALL ROUGH-IN PLUMBING ONLY.
 14. SINGLE CLOSET ROD + SHELF (61 1/2" A.F.F.) - VINYL COATED WIRE WITH STANDARD SPACING. VERIFY HEIGHT IN SECOND FLOOR KNEE WALL AREAS.
 15. ARCHED OPENING, SPRING POINT @ 1'-6" A.F.F. TOP OF ARCH 6'-6" ABOVE SPRING POINT.
 16. LOCATION OF DOUBLE 2 X 4 STUD WALL.
 17. FRAMELESS MIRROR LOCATION - 42" HIGH X 2" SHORTER THAN VANITY TOP (1" EACH SIDE) - SET BOTTOM OF MIRROR AT TOP OF BACKFLASH.
 18. VANITY BASE AND COUNTERTOP 31 1/2" A.F.F.
 19. TOILET + SEAT.
 20. SELF-RIMMING COUNTER LAVATORY AND FAUCET.
 21. 32" X 60" STANDARD TUB/SHOWER + FAUCET WITH CERAMIC TILE SURROUND.
 22. TEMPERED GLASS SHOWER ENCLOSURE AND DOOR.
 23. 25 1/2" X 54" OPTIONAL FULL DOWN STAIR LOCATED BETWEEN TRUSSES ABOVE. DRYWALL ON STAIR SHALL BE MOUNTED WITH SCREWS INTO THE TOP + BOTTOM DOOR CROSS SUPPORTS WITH THE CENTER GLUED LEAVING NO SCREWS EXPOSED.
 24. BASE CABINETS AND COUNTERTOP.
 25. LINE OF WALL CABINETS ABOVE.
 26. 24" LONG TOWEL BAR - 54" A.F.F. (58" A.F.F. ABOVE TOILET).
 27. REFRIGERATOR LOCATION.
 28. DOUBLE BOWL SINK AND FAUCET.
 29. RANGE LOCATION.
 30. DISHWASHER LOCATION.
 31. 10" X 10" BUILT-UP COLUMN - TYPICAL. SEE DETAIL D, SHEET A304 FOR MORE INFORMATION.
 32. TOILET PAPER DISPENSER.
 33. (4) 6" DEEP WIRE SHELVES (24", 42", 55", 68" A.F.F.) - STANDARD SPACING. TYPICAL AT LINEN CLOSETS AND PANTRIES, UNLESS NOTED OTHERWISE.
 34. FURNACE LOCATION.
 35. TANKLESS WATER HEATER LOCATION.
 36. 10" X 10" BUILT-UP COLUMN / PILASTER - TYPICAL. SEE DETAIL F, SHEET A304 FOR MORE INFORMATION.
 37. 16'-0" X 8'-0" OPTIONAL ATTIC STORAGE ABOVE - PROVIDE 3/4" APA RATED SUB-FLOORING ON BOTTOM CHORD OF TRUSSES.
 38. 1/2 WALL TO UNDERSIDE OF BAR COUNTERTOP.
 39. HOSE BIBB LOCATION.
 40. SURFACE MOUNTED ELECTRIC PANEL LOCATION.
 41. PROVIDE (2) JACKS UNDER ALL HEADERS IN OPENINGS OVER 60" WIDE - TYPICAL.
 42. INDICATES MULTIPLE STUD COLUMN IN WALL - TYPICAL AT BEARING OF ALL WOOD BEAMS, GIRDER TRUSSES UNLESS NOTED OTHERWISE. SEE PLAN FOR NUMBER OF STUDS REQUIRED.
 43. MINIMUM 1/2" DRYWALL ON GARAGE SIDE.
 44. 32" X 60" STANDARD SHOWER BASE.
 45. CUSTOM TILED WALK-IN SHOWER BASE - SEE PLAN FOR SIZE.
 46. WOOD GUARD RAIL (OPTIONAL) - SEE DETAIL K ON SHEET A304.
 47. TILED CORNER SEAT OPTION - 30" WIDE X 18" A.F.F. HIGH.
 48. FLAT DRYWALL CEILING ON UNDERSIDE OF BOTTOM CHORD OF ROOF TRUSSES OR FLOOR JOISTS.
 49. FLAT DRYWALL CEILING @ 9'-0" A.F.F.
 50. SOAP DISH - 5" HIGH X 7" WIDE.
 51. DOWNSPOUT LOCATION.
 52. DOWNSPOUT DISCHARGED INTO BLACK PIPE AND ROUTED UNDER WALKS OR PATIO.
 53. EDGE OF DRIVEWAY.
 54. 4" THICK SLAB TYPICAL @ CONCRETE WALKS/PORCHES/PATIOS.
 55. CONTROL JOINTS - TYPICAL.
 56. DASHED LINES INDICATE BOXED BEAM ABOVE.
 57. 12" DEEP SHELF (60" A.F.F.) - VINYL COATED WIRE - STANDARD SPACING.
 58. SHOWER WALL - 6'-0" A.F.F.
 59. OPTIONAL GARAGE SHELVING.
 60. OPTIONAL DESK.
 61. COURTYARD GATE AND FENCE LOCATION.
 62. DASHED LINE INDICATES OPTIONAL PATIO SECTION.
 63. OPTIONAL WINDOWS.
 64. (4) 12" DEEP WIRE SHELVES (24", 42", 55", 68" A.F.F.) - STANDARD SPACING.
 65. 32" X 60" SHOWER BASE WITH BUILT-IN SEAT.
 66. HARDBOARD TREADS AND RISERS.
 67. WOOD HANDRAIL - 34" ABOVE STAIR TREADS. RETURN ENDS TO WALL OR NEVEL POST.
 68. SINGLE BOWL SINK AND FAUCET.



Foundation Development Group, LLC & Bel Haven, LLC
Bel Haven
Beckett Road
West Chester, Ohio 45069

PROPRIETARY RIGHTS NOTICE
COPYRIGHT 2017 EPCON COMMUNITIES FRANCHISING, INC.
ALL RIGHTS ARE RESERVED IN THIS INFORMATION AND ALL RELATED ILLUSTRATIONS, PLANS, BLUEPRINTS, SKETCHES, DRAWINGS, OR ANY OTHER TANGIBLE EXPRESSIONS THEREOF, WHICH ARE THE PROPERTY OF EPCON COMMUNITIES FRANCHISING, INC. NO STOREHOUSE FURNITURE, CUBICAL GRID ARMY, TELEPHONE BASKET, NO ONE MAY BUILD, LICENSE, TRANSFER, REPRODUCE OR DUPLICATE THIS WORK IN ANY WAY WITHOUT THE WRITTEN AUTHORIZATION OF EPCON COMMUNITIES FRANCHISING, INC.
THESE DRAWINGS SHALL BE USED IN CONFORMANCE WITH ALL LOCAL, BUILDING, MECHANICAL, PLUMBING AND ELECTRICAL CODES AND SHALL MEET THE REQUIREMENTS OF THE HEALTH DEPARTMENT, FIRE MARSHALL, AMERICANS WITH DISABILITIES ACT ACCESSIBILITY GUIDELINES (ADA), THE FAIR HOUSING ACT ACCESSIBILITY GUIDELINES (FHAG), AND SHALL BE CONSTRUCTED IN CONFORMANCE WITH STATE AND LOCAL ENERGY REQUIREMENTS.

Prototype Disk No.	Interim Page Revisions	Date
	Revision	4/28/10

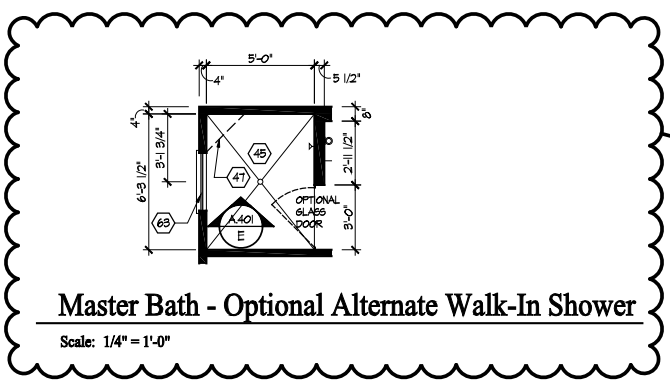
Architect Project Number
2019-044

Community Dates & Revisions	
Date Originated	20 FEB 2020
Bid	
Permit	
Construction	
Revisions	
▲	▲
▲	▲
▲	▲

Drawing Title
First Floor Plan

Architectural Style
European Country
Sheet Number
A.101
D2+M Bonus 2010

**2 Story slab
large heater
irrigation system
humidifier valve for furnace
ice maker
No laundry tub !
Gas Furnace - Heater and Fireplace
Optional master bath shower - see left here**



First Floor
Scale: 1/4" = 1'-0"

YES

GENERAL NOTES

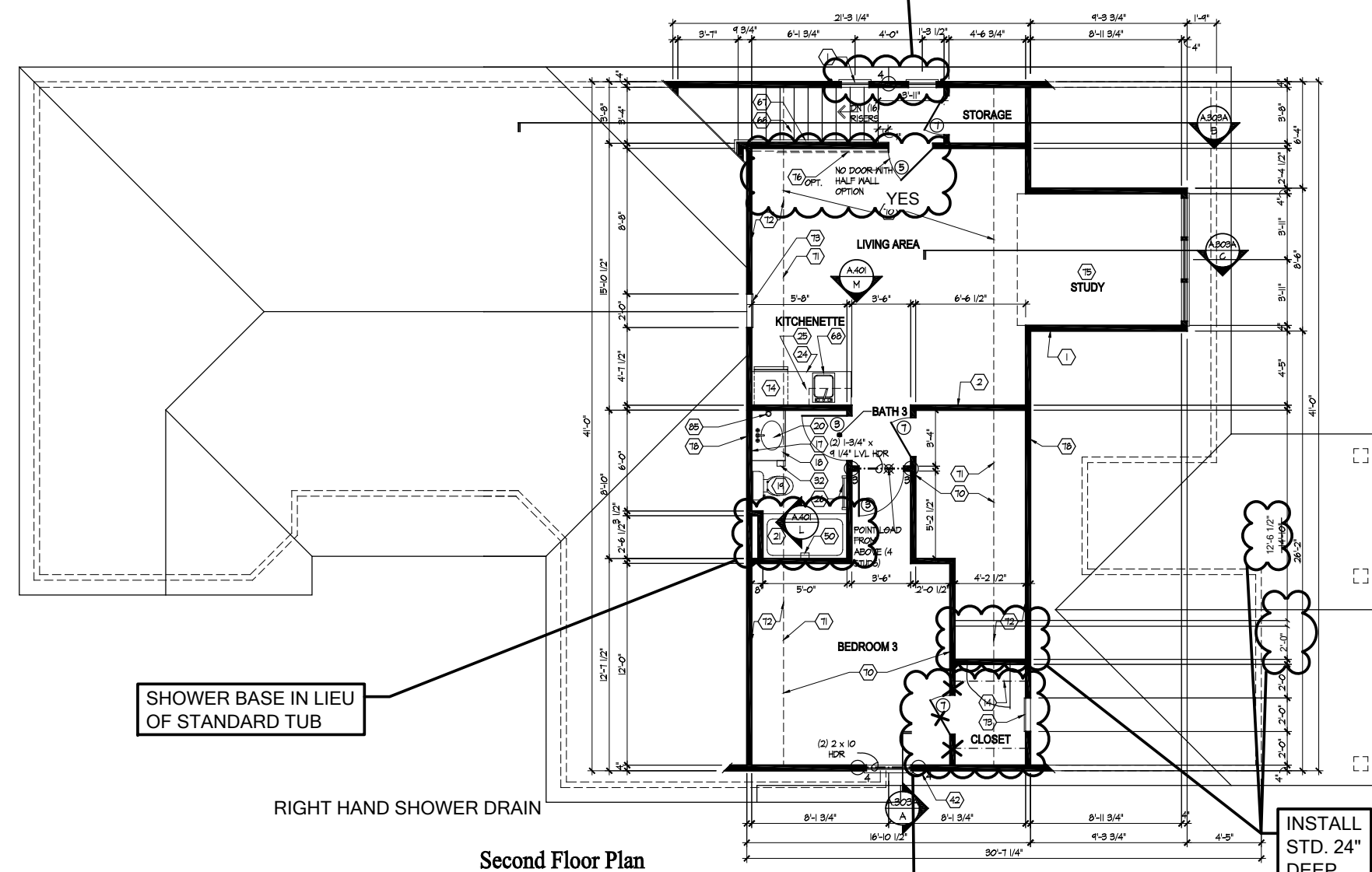
1. EXTERIOR WALL DIMENSIONS INCLUDE THICKNESS OF SHEATHING.
2. REFER TO SITE LAYOUT PLAN FOR BUILDING LOCATIONS AND ORIENTATIONS.
3. DOORS NOT OTHERWISE DIMENSIONED SHALL BE LOCATED WITH ROUGH OPENING 3" FROM INTERSECTING WALLS.
4. AT SECOND FLOOR WALL LOCATIONS WITH PARALLEL FLOOR JOIST/TRUSSES - PROVIDE 2 X BLOCOS FULL DEPTH OF FLOOR STRUCTURE BETWEEN JOISTS/TRUSSES @ 24" O.C.

FIRST FLOOR PLAN CODED NOTES

(FIRST FLOOR UNIT PLANS ONLY)
(ALL NOTES NOT APPLICABLE TO ALL SHEETS)

1. EXTERIOR STUD WALL - 2 X 4 WOOD STUDS AT 16" O.C. WITH 1/2" DRYWALL ON ALL INTERIOR SURFACES AND 7/8" O.S.B. SHEATHING ON EXTERIOR SURFACES - TYPICAL.
2. INTERIOR STUD WALL - 2 X 4 WOOD STUDS AT 16" O.C. WITH 1/2" DRYWALL ON ALL FINISHED SURFACES - TYPICAL.
3. FLAT DRYWALL CEILING @ 9'-0" A.F.F. - TYPICAL UNLESS NOTED OTHERWISE.
4. 20" DEEP X 60" WIDE GRANITE HEARTH EXTENSION - CENTERED ON FIREBOX.
5. ISLAND BASE CABINETS & COUNTERTOP - FINISH ALL EDGES OF CABINETS & COUNTERTOP.
6. TRAY CEILING @ 10'-0" A.F.F.
7. PROVIDE FIBERGLASS BATT INSULATION IN GARAGE WALLS COMMON TO LIVING SPACE.
8. MAINTAIN 4" MINIMUM ELEVATION CHANGE BETWEEN GARAGE FLOOR & FINISHED FIRST FLOOR.
9. PREFABRICATED METAL FIREBOX UNIT HEARTH & HOME MODEL DV8TB25B1 (OR SIMILAR), PROVIDE GAS LINE, GAS LOG SET AND SCREEN - ROUGH OPENING 9" WIDE X 34 3/4" HIGH X 18" DEEP (26" DEEP WITH BUILT-IN CABINETRY OPTION).
10. OPTIONAL CABINETS - SEE INTERIOR ELEVATIONS.
11. WASHER LOCATION - PROVIDE WASHER BOX ON BACK WALL, WASHER ALWAYS LOCATED LEFT OF DRYER.
12. DRYER LOCATION - DRYER VENT IN WALL.
13. OPTIONAL UTILITY SINK AND FAUCET - INSTALL ROUGH-IN PLUMBING ONLY.
14. SINGLE CLOSET ROD & SHELF (8" 1/2" A.F.F.) - VINYL COATED WIRE WITH STANDARD SPACING. VERIFY HEIGHT IN SECOND FLOOR KNEE WALL AREAS.
15. ARCHED OPENING, SPRING POINT @ 7'-8" A.F.F., TOP OF ARCH 8'-6" ABOVE SPRING POINT.
16. LOCATION OF DOUBLE 2 X 4 STUD WALL.
17. FRAMELESS MIRROR LOCATION - 42" HIGH X 2" SHORTER THAN VANITY TOP (1" EACH SIDE) - SET BOTTOM OF MIRROR AT TOP OF BACKSLASH.
18. VANITY BASE AND COUNTERTOP 31 1/2" A.F.F.
19. TOILET & SEAT.
20. SELF-RIMMING COUNTER LAVATORY AND FAUCET.
21. 32" X 60" STANDARD TUB/SHOWER & FAUCET WITH CERAMIC TILE SURROUND.
22. TEMPERED GLASS SHOWER ENCLOSURE AND DOOR.
23. 25 1/2" X 34" OPTIONAL PULL DOWN STAIR LOCATED BETWEEN TRUSSES ABOVE. DRYWALL ON STAIR SHALL BE MOUNTED WITH SCREWS INTO THE TOP & BOTTOM DOOR CROSS SUPPORTS WITH THE CENTER GLEED LEAVING NO SCREWS EXPOSED.
24. BASE CABINETS AND COUNTERTOP.
25. LINE OF WALL CABINETS ABOVE.
26. 24" LONG TOWEL BAR - 54" A.F.F. (58" A.F.F. ABOVE TOILET).
27. REFRIGERATOR LOCATION.
28. DOUBLE BOWL SINK AND FAUCET.
29. RANGE LOCATION.
30. DISHWASHER LOCATION.
31. 10" X 10" BUILT-UP COLUMN - TYPICAL SEE DETAIL D, SHEET A304 FOR MORE INFORMATION.
32. TOILET PAPER DISPENSER.
33. (4) 16" DEEP WIRE SHELVES (24", 42", 55", 68" A.F.F.) - STANDARD SPACING, TYPICAL AT LINEN CLOSETS AND PANTRIES UNLESS NOTED OTHERWISE.
34. FURNACE LOCATION.
35. TANKLESS WATER HEATER LOCATION.
36. 10" X 10" BUILT-UP COLUMN / PILASTER - TYPICAL SEE DETAIL F, SHEET A304 FOR MORE INFORMATION.
37. 16'-0" X 8'-0" OPTIONAL ATTIC STORAGE ABOVE - PROVIDE 3/4" APA RATED SUB-FLOORING ON BOTTOM CHORD OF TRUSSES.
38. 1/2" MALL TO UNDERSIDE OF BAR COUNTERTOP.
39. HOSE BIBB LOCATION.
40. SURFACE MOUNTED ELECTRIC PANEL LOCATION.
41. PROVIDE (2) JACKS UNDER ALL HEADERS IN OPENINGS OVER 60" WIDE - TYPICAL.
42. INDICATES MULTIPLE STUD COLUMN IN WALL - TYPICAL AT BEARING OF ALL WOOD BEAMS, GIRDER TRUSSES UNLESS NOTED OTHERWISE, SEE PLAN FOR NUMBER OF STUDS REQUIRED.
43. MINIMUM 1/2" DRYWALL ON GARAGE SIDE.
44. 32" X 60" STANDARD SHOWER BASE.
45. CUSTOM TILED WALK-IN SHOWER BASE - SEE PLAN FOR SIZE.
46. WOOD GUARD RAIL (OPTIONAL) - SEE DETAIL K ON SHEET A304.
47. TILED CORNER SEAT OPTION - 30" WIDE X 18" A.F.F. HIGH.
48. FLAT DRYWALL CEILING ON UNDERSIDE OF BOTTOM CHORD OF ROOF TRUSSES OR FLOOR JOISTS.
49. FLAT DRYWALL CEILING @ 8'-4" A.F.F.
50. SOAP DISH - 5" HIGH X 7" WIDE.
51. DOWNSPOUT LOCATION.
52. DOWNSPOUT DISCHARGED INTO BLACK PIPE AND ROUTED UNDER WALKS OR PATIO.
53. EDGE OF DRIVEWAY.
54. 4" THICK SLAB TYPICAL @ CONCRETE WALKS/PORCHES/PATIOS.
55. CONTROL JOINTS - TYPICAL.
56. DASHED LINES INDICATE BOXED BEAM ABOVE.
57. 12" DEEP SHELF (60" A.F.F.) - VINYL COATED WIRE - STANDARD SPACING.
58. SHOWER WALL - 6'-0" A.F.F.
59. OPTIONAL GARAGE SHELVING.
60. OPTIONAL DESK.
61. COURTYARD GATE AND FENCE LOCATION.
62. DASHED LINE INDICATES OPTIONAL PATIO SECTION.
63. OPTIONAL WINDOWS.
64. (4) 12" DEEP WIRE SHELVES (24", 42", 55", 68" A.F.F.) - STANDARD SPACING.
65. 32" X 60" SHOWER BASE WITH BUILT-IN SEAT.
66. HARDBOARD TREADS AND RISERS.
67. WOOD HANDRAIL - 34" ABOVE STAIR TREADS. RETURN ENDS TO WALL OR NEVEL POST.
68. SINGLE BOWL SINK AND FAUCET.

TWO SQUARE WINDOWS AT TOP OF STAIRWELL
VERIFY R.O. HEIGHT IN FIELD



SHOWER BASE IN LIEU OF STANDARD TUB

RIGHT HAND SHOWER DRAIN

Second Floor Plan

Scale: 1/4" = 1'-0"

REMOVE WALK-IN CLOSET

INSTALL STD. 24" DEEP CLOSET

64. 20" RANGE LOCATION.
65. 20" RANGE LOCATION.
66. 20" RANGE LOCATION.
67. 20" RANGE LOCATION.
68. 20" RANGE LOCATION.
69. 20" RANGE LOCATION.
70. FLAT DRYWALL CEILING @ 8'-0" A.F.F.
71. LINE OF BREAK OF SLOPED DRYWALL CEILING - FOLLOW BOTTOM CHORD OF ROOF TRUSSES OR RAFTERS ABOVE.
72. SLOPED CEILING AREA ABOVE.
73. ATTIC ACCESS PANEL: 22" X 30" MINIMUM. PANEL TO BE 6" MIN. ABOVE BASE IF LOCATED IN KNEE WALL. PANEL TO HAVE 1" QUARTER ROUND MOLLING AROUND EDGE. PANEL SHALL BE WEATHER-STRIPPED AND INSULATED TO A LEVEL EQUIVALENT TO THE INSULATION ON THE SURROUNDING SURFACES. IF IN THE CEILING, A BATTLE IS REQUIRED TO CONTAIN LOOSE-FILL INSULATION.
74. UNDER THE COUNTER REFRIGERATOR LOCATION.
75. FLAT DRYWALL CEILING @ 7'-0" A.F.F.
76. 2 X 6 HALF WALL @ 36" A.F.F. WITH 1 X 8 HARDWOOD CAP - 1/2" LAG BOLT EACH END THRU SUB FLOOR.
77. SINGLE CLOSET ROD & SHELF (48" A.F.F.) - VINYL COATED WIRE WITH STANDARD SPACING.
78. KNEE WALL: 2 X 4 WOOD STUDS AT 16" O.C. WITH 1/2" DRYWALL ON ALL INTERIOR SURFACES, AND 1/4" O.S.B. BACKER PANEL ON EXTERIOR SURFACES - TYPICAL. RUN FROM FLOOR STRUCTURE BELOW TO UNDERSIDE OF ROOF FRAMING.
79. 3" DIAMETER STANDARD STEEL PIPE COLUMN WITH 1/2" GAP PLATE AND 1/2" X 4" X 6" BASE PLATE.
80. FULL HEIGHT PANTRY CABINET - SEE INTERIOR ELEVATIONS.
81. DASHED LINE INDICATES BEAM - SEE BONUS ROOM GARAGE WALL SECTION.
82. LINE INDICATES EXPOSED FOUNDATION STEM WALL.
83. FLAT DRYWALL CEILING @ 8'-4" A.F.F.
84. DASHED LINE INDICATES 8" CEILING SOFFIT FOR SANITARY LINES FROM BONUS ROOM.
85. TOWEL RING.



Foundation Development
Group, LLC & Bel Haven, LLC
Bel Haven
Beckett Road
West Chester, Ohio 45069

PROPRIETARY RIGHTS NOTICE
COPYRIGHT 2007 EPCON COMMUNITIES FRANCHISING, INC.
ALL RIGHTS ARE RESERVED IN THIS INFORMATION AND ALL RELATED ILLUSTRATIONS, PLANS, BLUEPRINTS, SKETCHES, DRAWINGS, OR ANY OTHER TANGIBLE EXPRESSIONS THEREOF, WHICH ARE THE PROPERTY OF EPCON COMMUNITIES FRANCHISING, INC. 800 STOREHOUSE PARKWAY, COLUMBIA, OHIO 43007, TELEPHONE 614.882.2807. NO ONE MAY BUILD, LICENSE, TRANSFER, REPRODUCE OR DUPLICATE THIS WORK IN ANY WAY WITHOUT THE WRITTEN AUTHORIZATION OF EPCON COMMUNITIES FRANCHISING, INC.
THESE DRAWINGS SHALL BE USED IN CONFORMANCE WITH ALL LOCAL BUILDING, MECHANICAL, PLUMBING AND ELECTRICAL CODES AND SHALL MEET THE REQUIREMENTS OF THE HEALTH DEPARTMENT, FIRE MARSHALL, AMERICANS WITH DISABILITIES ACT ACCESSIBILITY GUIDELINES (ADAAG), THE FAIR HOUSING ACT ACCESSIBILITY GUIDELINES (FHAG), AND SHALL BE CONSTRUCTED IN CONFORMANCE WITH STATE AND LOCAL ENERGY REQUIREMENTS.

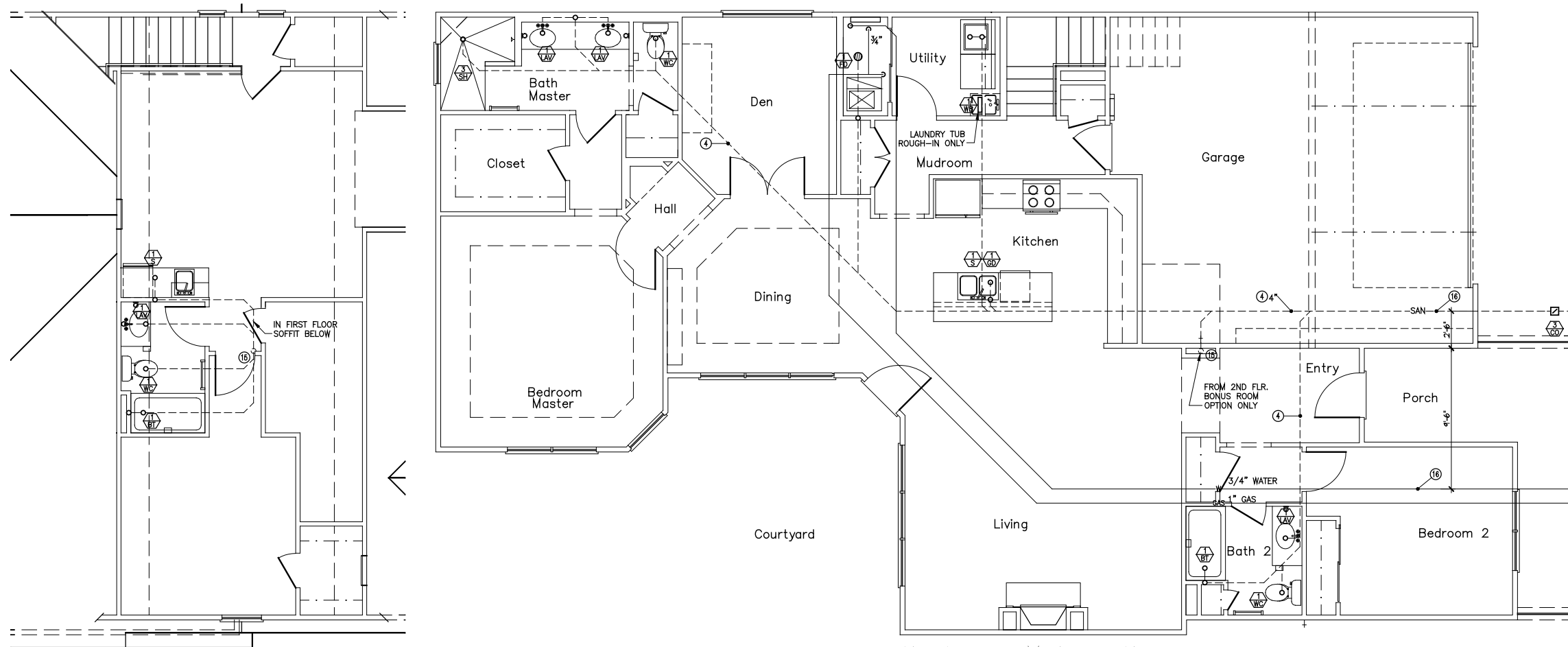
Prototype Disk No.	Interim Revision	Page Revisions
		Date
		4/28/10

Architect Project Number
2019-044

Community Dates & Revisions	
Date Originated	20 FEB 2020
Bid Permit Construction	
Revisions	
▲	▲
▲	▲
▲	▲

Drawing Title
Second Floor Plan

Architectural Style
European Country
Sheet Number
A.101A
D2+M Bonus 2010



PDD-2 SANITARY PLUMBING PLAN
SCALE: 1/4" = 1'-0"

PLUMBING DESIGN CRITERIA

- SANITARY BUILDING SERVICES SHALL BE SDR-35 AND AS APPROVED FOR USE BY LOCAL UTILITY.
- SANITARY DRAIN WASTE AND VENT PIPING SHALL BE SCHEDULE #40 PVC SOLVENT WELD PIPE AND FITTINGS. PIPING SHALL BE SLOPED AS FOLLOWS:
3" AND SMALLER: 1/4" PER FT.
4" AND LARGER: 1/8" PER FT.
- WATER SERVICE SUPPLY PIPING SHALL BE POLYETHYLENE TUBING OR TYPE "K" SOFT COPPER AND AS APPROVED FOR USE BY LOCAL UTILITY.
- PROVIDE 3/4" WATER SERVICE TO EACH BUILDING. COORDINATE WITH LOCAL WATER UTILITY.
- PROVIDE WAITS NO. 7D BACKFLOW DEVICE ON WATER SERVICE TO EACH INDIVIDUAL UNIT.
- PROVIDE MINIMUM 1/2" WATER SUPPLY PIPE TO EACH PLUMBING FIXTURE. PIPING TO BE INSTALLED BELOW FLOOR SLAB. (NO FITTINGS PERMITTED BELOW SLAB).
WATER SUPPLY PIPING SHALL BE AS FOLLOWS:
o TYPE "K" SOFT COPPER TUBING - BELOW SLAB.
o TYPE "L" HARD COPPER TUBING - ABOVE SLAB.
o CPVC COILED PLASTIC TUBING - BELOW SLAB.
o CPVC RIGID PLASTIC TUBING - ABOVE SLAB.
- (2) GAS SERVICE SUPPLY PIPING SHALL BE AS REQUIRED BY LOCAL GAS UTILITY.
- PROVIDE GAS METER AND RISER ASSEMBLY FOR EACH UNIT PER LOCAL GAS UTILITY REQUIREMENTS.
- (6) PROVIDE MINIMUM 1/2" GAS SUPPLY PIPE TO EACH DESIGNATED PIECE OF EQUIPMENT. PIPING TO BE INSTALLED IN VENTILATED ATTIC.
- (8) GAS SUPPLY PIPING SHALL BE AS FOLLOWS:
o SCHEDULE #40 BLACK STEEL PIPE.
o CSST TUBING.
- PROVIDE GAS SUPPLY PIPE TO THE FOLLOWING EQUIPMENT:
(3) o FURNACE
(3) o WATER HEATER
(2) o FIREPLACE
- (1) ALL PIPING SYSTEMS SHALL COMPLY WITH STATE AND LOCAL CODE REQUIREMENTS.
- ALL MATERIALS AND INSTALLATION OF PLUMBING SYSTEMS SHALL COMPLY WITH STATE AND LOCAL BUILDING CODE REQUIREMENTS.
- WATER HEATER SHALL BE 40 GALLON GAS FIRED WITH 35,000 BTUH GAS INPUT.
o INSTALL CODE APPROVED, SELF CLOSING TEMPERATURE AND PRESSURE RELIEF VALVE AND DISCHARGE INDIRECTLY INTO HUB DRAIN.
o INSTALL HEAT TRAPS ON CW AND HW SUPPLY PIPES.
o INSTALL THERMAL EXPANSION TANK ON CW SUPPLY PIPE TO WATER HEATER.
-WATER HEATER SHALL BE ADJUSTED TO DELIVER NO MORE THAN:
-SHOWER VALVES SHALL BE THERMOSTATIC/PRESSURE BALANCE TYPE MIXING VALVES WITH MAXIMUM WATER TEMPERATURE ADJUSTED TO DELIVER NO MORE THAN 110° F HW.
-EACH FIXTURE OR PIECE OF EQUIPMENT SHALL BE INSTALLED WITH INDIVIDUAL SHUT-OFF VALVES.
-SHOCK ARRESTORS SHALL BE INSTALLED ON WATER SUPPLY PIPING WHERE QUICK CLOSING VALVES ARE CONNECTED TO THE SYSTEM. (I.E. DISHWASHER/WASHING MACHINE).
-PROVIDE 1/2" CW SUPPLY PIPE WITH 1/4 TURN BALL VALVE PVC VALVE BOX FOR ICE MAKER.
-PROVIDE 1/2" HW SUPPLY PIPE WITH 1/4 TURN BALL VALVE FOR DISHWASHER.
PROVIDE 5/8" DRAIN LINE FROM DISHWASHER TO GARBAGE DISPOSAL.
-INSTALL 1/3 H.P. GARBAGE DISPOSAL IN SINK COMPARTMENT CLOSEST TO DISHWASHER.
EXCEPTION: ON SINK UPGRADE, G.D. TO BE INSTALLED IN VEGETABLE BOWL.
-PROVIDE 1/2" CW/HW SUPPLY PIPES WITH 1/4 TURN VALVES, 2" DRAIN LINE AND PVC BOX FOR WASHING MACHINE.
-NO WATER PIPING TO BE LOCATED IN EXTERIOR WALL. PIPE ROUGH-INS SHALL BE LOCATED IN BASE CABINET BELOW FIXTURE.
-INSTALL CLEANOUTS ON BUILDING SANITARY DRAINS AT MAXIMUM 100FT. O.C. AND CHANGES GREATER THAN 45°.
-INSTALL FLOOR DRAIN IN WATER HEATER CLOSET.
-PROVIDE TRAP PRIMER VALVE FOR ALL FLOOR DRAINS AND

PDD-2 BONUS ROOM SANITARY PLAN
SCALE: 1/4" = 1'-0"



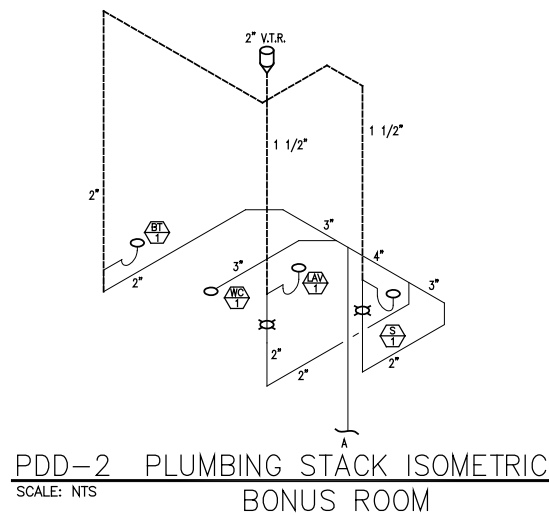
MASTER BATH - OPTIONAL ALT.
SCALE: 1/4" = 1'-0"
WALK-IN SHOWER

YES

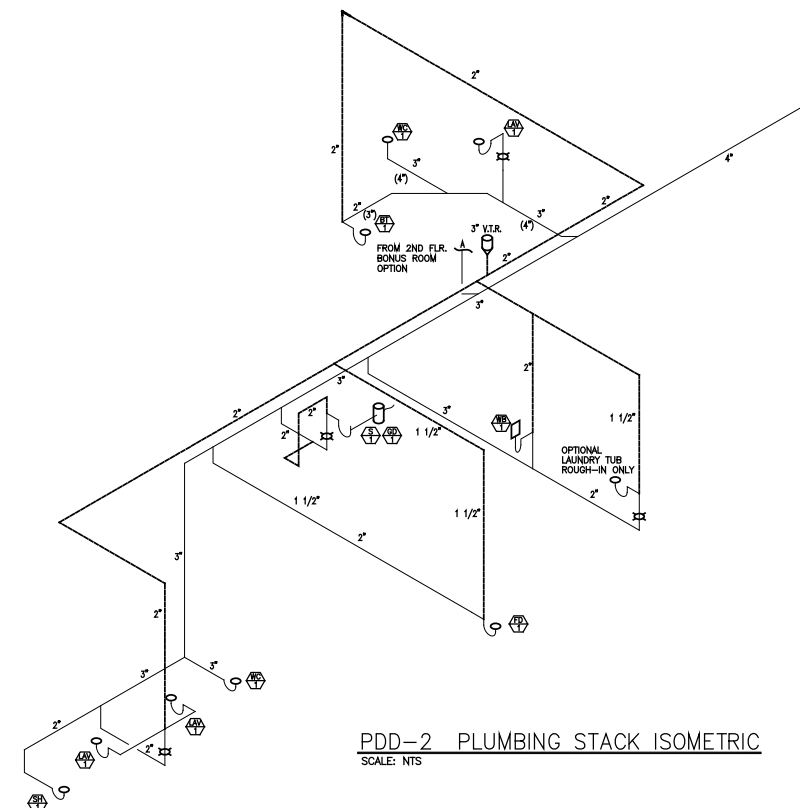
NOTE: PENETRATIONS OF FLOOR-CEILING ASSEMBLIES AND WALL ASSEMBLIES REQUIRED TO HAVE A FIRE/RESISTANCE RATING MUST MAINTAIN THE INTEGRITY OF THE FIRE/RESISTANCE-RATED ASSEMBLY AND LIMIT THE SPREAD OF FIRE AND SMOKE. FIRE/SMOKE STOPPING MATERIAL SHALL BE U.L. APPROVED AND SHALL BE RATED FOR THE TYPE OF FIRE/RESISTANT RATED ASSEMBLY AND THE MATERIAL TYPE OF THE PENETRANT.

NOTE: PVC DRAIN, WASTE AND VENT PIPING AND COPPER WATER PIPING PASSING THROUGH A STRUCTURAL MEMBER WITHIN 1-1/2" FROM THE NEAREST EDGE MUST BE PROTECTED BY A 1/16" STEEL PLATE TO PREVENT FASTENER PENETRATION.

NOTE: NO PIPING SHALL BE LOCATED DIRECTLY ABOVE ELECTRIC PANELS. SEE ELECTRIC PLANS FOR LOCATIONS.



PDD-2 PLUMBING STACK ISOMETRIC
SCALE: NTS
BONUS ROOM



PDD-2 PLUMBING STACK ISOMETRIC
SCALE: NTS

PLUMBING PLAN NOTES

- 4" SANITARY BUILDING DRAIN LOCATED BELOW FLOOR SLAB. SLOPE MINIMUM 1/8" PER FT.
- o 4" WATER SUPPLY PIPING LOCATED BELOW FLOOR SLAB. SLOPE MINIMUM 48" BELOW GRADE.
- 1/2" (2LB) CSST GAS SUPPLY PIPE FROM METER SET TO MANIFOLD. INSTALL IN VENTILATED ATTIC.
- SANITARY BRANCH PIPING FOR 1st FLOOR FIXTURES TO BE LOCATED BELOW FIRST FLOOR SLAB.
- HOT AND COLD WATER PIPING FOR 1st FLOOR FIXTURES TO BE LOCATED IN VENTILATED ATTIC. (NO FITTINGS BELOW SLAB).
- GAS PIPING FOR 1st FLOOR EQUIPMENT TO BE LOCATED IN VENTILATED ATTIC. EXTEND INDIVIDUAL "CSST" GAS SUPPLY PIPES FROM MANIFOLD TO EACH INDIVIDUAL PIECE OF EQUIPMENT. (NO FITTINGS).
- DISHWASHER.
PROVIDE 1/2" VALVED HW WITH FLEX HOSE TO DW.
PROVIDE 5/8" FLEX DRAIN LINE FROM D.W. TO G.D.
- (8) ICE MAKER VALVE BOX.
PROVIDE 1/2" VALVED CW WITH 3/8" FLEX HOSE TO ICE MAKER.
- (9) FURNACE.
PROVIDE 3/4" CSST WARD FLEX GAS SUPPLY PIPE TO FURNACE. INSTALL GAS VALVE AT CONNECTION TO EQUIPMENT.
- (10) WATER HEATER.
PROVIDE 3/4" CSST WARD FLEX GAS SUPPLY PIPE TO WATER HEATER. INSTALL GAS VALVE AT CONNECTION TO EQUIPMENT.
- (11) RANGE (OPTIONAL).
PROVIDE 1/2" CSST WARD FLEX GAS SUPPLY PIPE TO RANGE. INSTALL GAS VALVE AT CONNECTION TO EQUIPMENT.
- (12) FIREPLACE.
PROVIDE 1/2" CSST WARD FLEX GAS SUPPLY PIPE TO VENTED FIREPLACE. INSTALL BRASS SHUT-OFF VALVE AND KEY.
- (13) FIRE PIT (OPTIONAL).
PROVIDE 1/2" CSST WARD FLEX GAS SUPPLY PIPE TO FIRE PIT. INSTALL BRASS SHUT-OFF VALVE AND KEY AT 18" ABOVE GRADE. (VERIFY EXACT LOCATION WITH G.C.).
- (14) 1/2" TYPE "K" FLEX COPPER GAS SUPPLY PIPE. INSTALL IN PVC CONDUIT 12" - 18" BELOW GRADE. COORDINATE INSTALLATION WITH G.C.
- (15) 4" SANITARY DOWN IN WALL TO THE INTO FIRST FLOOR SANITARY.
- (16) PLUMBER TO PROVIDE 4" PVC SLEEVE FOR WATER AND 4" SANITARY LINE FOR INSTALLATION BY FOOTER CONTRACTOR.



Foundation Development
Group, LLC & Bel Haven, LLC
Bel Haven
Beckett Road
West Chester, Ohio 45069

PROPRIETARY RIGHTS NOTICE
COPYRIGHT 2007 EPCON COMMUNITIES FRANCHISING, INC.
ALL RIGHTS ARE RESERVED IN THIS INFORMATION AND ALL RELATED ILLUSTRATIONS, PLANS, BLUEPRINTS, SPECIFICATIONS, DRAWINGS, OR ANY OTHER TANGIBLE EXPRESSIONS THEREOF, WHICH ARE THE PROPERTY OF EPCON COMMUNITIES FRANCHISING, INC. 800 STOREFRONT PARKWAY, DUBLIN, OHIO 43017, TELEPHONE 614.882.3827. NO ONE MAY BUILD, LICENSE, TRANSFER, REPRODUCE OR DUPLICATE THIS WORK IN ANY MANNER WITHOUT THE WRITTEN AUTHORIZATION OF EPCON COMMUNITIES FRANCHISING, INC.
THESE DRAWINGS SHALL BE USED IN CONFORMANCE WITH ALL LOCAL BUILDING, MECHANICAL, PLUMBING AND ELECTRICAL CODES AND SHALL MEET THE REQUIREMENTS OF THE HEALTH DEPARTMENT, FIRE MARSHALL, AMERICANS WITH DISABILITIES ACT ACCESSIBILITY GUIDELINES (ADAAG), THE FAIR HOUSING ACT ACCESSIBILITY GUIDELINES (FHAG), AND SHALL BE CONSTRUCTED IN CONFORMANCE WITH STATE AND LOCAL ENERGY REQUIREMENTS.

Prototype Disk No.	Interim Page Revision	Revisions	Date
			11/2/10

Architect Project Number
2019-044

Community Dates & Revisions	
Date Originated	20 FEB 2020
Bldg Permit Construction	
Revisions	

Drawing Title
Plumbing Plans

Architectural Style
European Country
Sheet Number
P.100
D2+M Bonus 2010