

LEGEND

	BEARING WALL
	NON BEARING WALL
	INDICATES BEARING FROM POINT-LOAD ABOVE
	JACKS
	BEAM/HEADER
	PAD FOOTING
	STEEL COLUMN
	PORTAL FRAME
	JOIST/TRUSS
	LVL
	ENGINEERING PAGE NUMBER

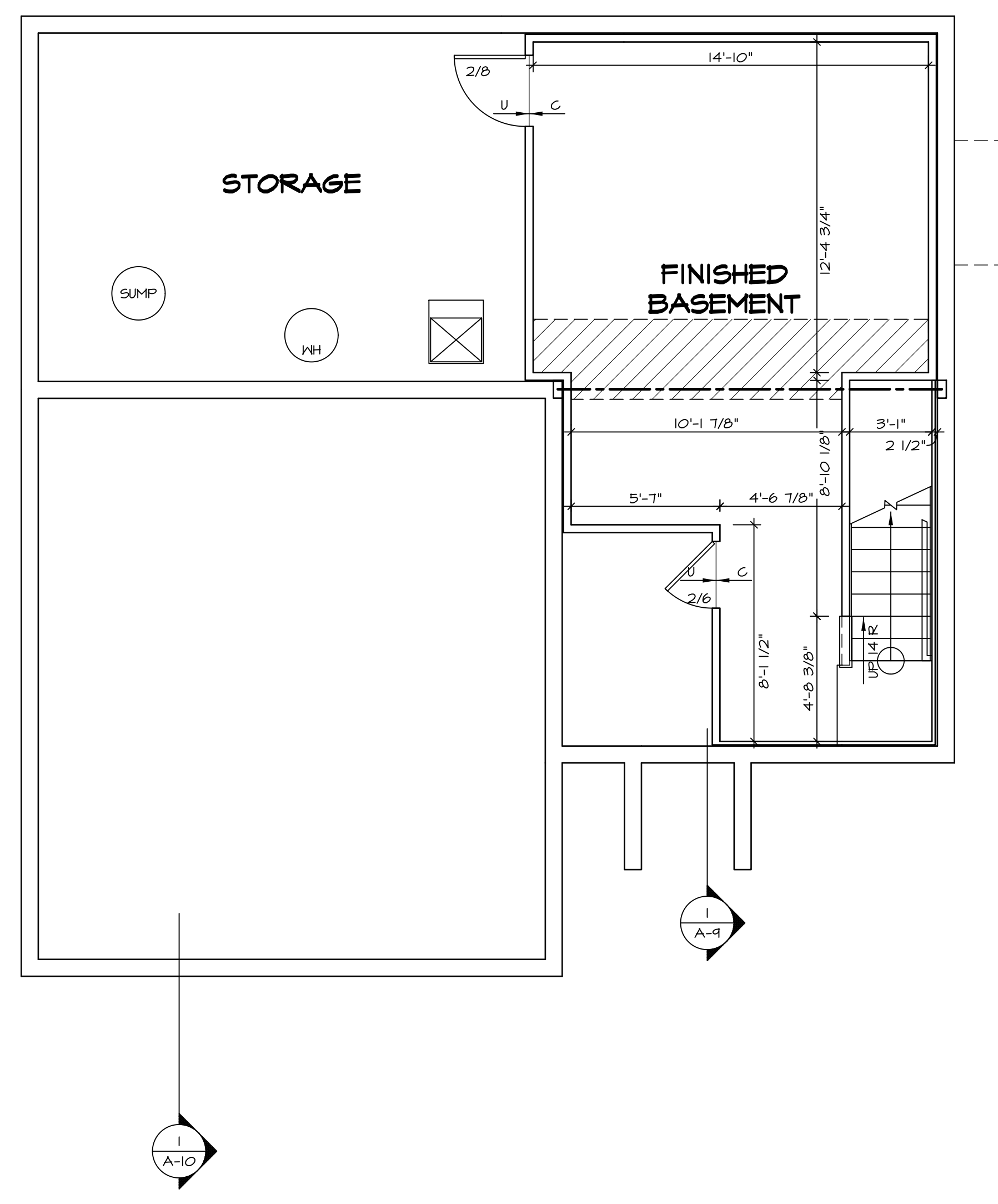
SEE FC DETAILS FOR FRAMING CONNECTORS

- FLOOR PLAN NOTES**
- ALL HEADERS ARE (2) 2x6 w/ 2x4 WALLS OR (3) 2x6 w/ 2x6 WALLS, UNLESS OTHERWISE NOTED.
 - ALL HEADERS TO HAVE (1) 2x4 OR 2x6 JACK EACH END, UNLESS OTHERWISE NOTED.
 - ALL EXTERIOR WALLS TO BE 4" AND ALL INTERIOR WALLS TO BE 3 1/2", UNLESS OTHERWISE NOTED.
 - HATCHED AREAS INDICATE DROPPED CEILINGS. ALL DROPPED CEILINGS ARE 12" UNLESS OTHERWISE NOTED.
 - SEE "BRACED WALL PANEL DETAIL SHEET" FOR SPECIAL WALL FRAMING LOCATIONS AND HEADER SIZES, IF APPLICABLE.
 - SEE STANDARD DETAIL CATEGORY "IT" SHEET(S) FOR INTERIOR TRIM DETAILS.
 - SEE ARCHITECTURAL DETAIL SHEET "AD" FOR HOUSE SPECIFIC INTERIOR TRIM OPTION TABLE.
 - ALL WINDOWS HAVE T-O 1/2" HEADER HEIGHT UNLESS OTHERWISE NOTED.

GYPSUM NOTES

AT GARAGE:
GYPSUM BOARD AT COMMON WALLS, CEILINGS, BEAM WRAPS AND SUPPORTS PER STANDARD DETAIL FA-1(b) FIRE ASSEMBLIES OR AS REQUIRED BY LOCAL CODE.

AT STAIRS:
1/2" GYPSUM BOARD AT UNDERSIDE OF STAIRS AND WALLS IN CLOSET



BASEMENT FLOOR PLAN
SCALE: 1/4" = 1'-0"

SHEET NO. A-6	MODEL SIENNA	DRAWING TITLE BASEMENT FLOOR PLAN	OPTION DESCRIPTION	SET NO. SIECO VERSION 05	REV. NO. DATE	REMARKS
				DRAWN BY	08/05/16 N.L. - DRAWING ALIGNMENT	
23				DATE: 2/2/2015		
				OPTION		

NVR
Architectural Services
21 Bay View, Suite A
Frederick, MD 21702

NVR, Inc., owner, expressly reserves its copyright in these plans. These plans are not to be reproduced, changed, adapted in any way, or otherwise used, without the prior written consent of NVR, Inc.

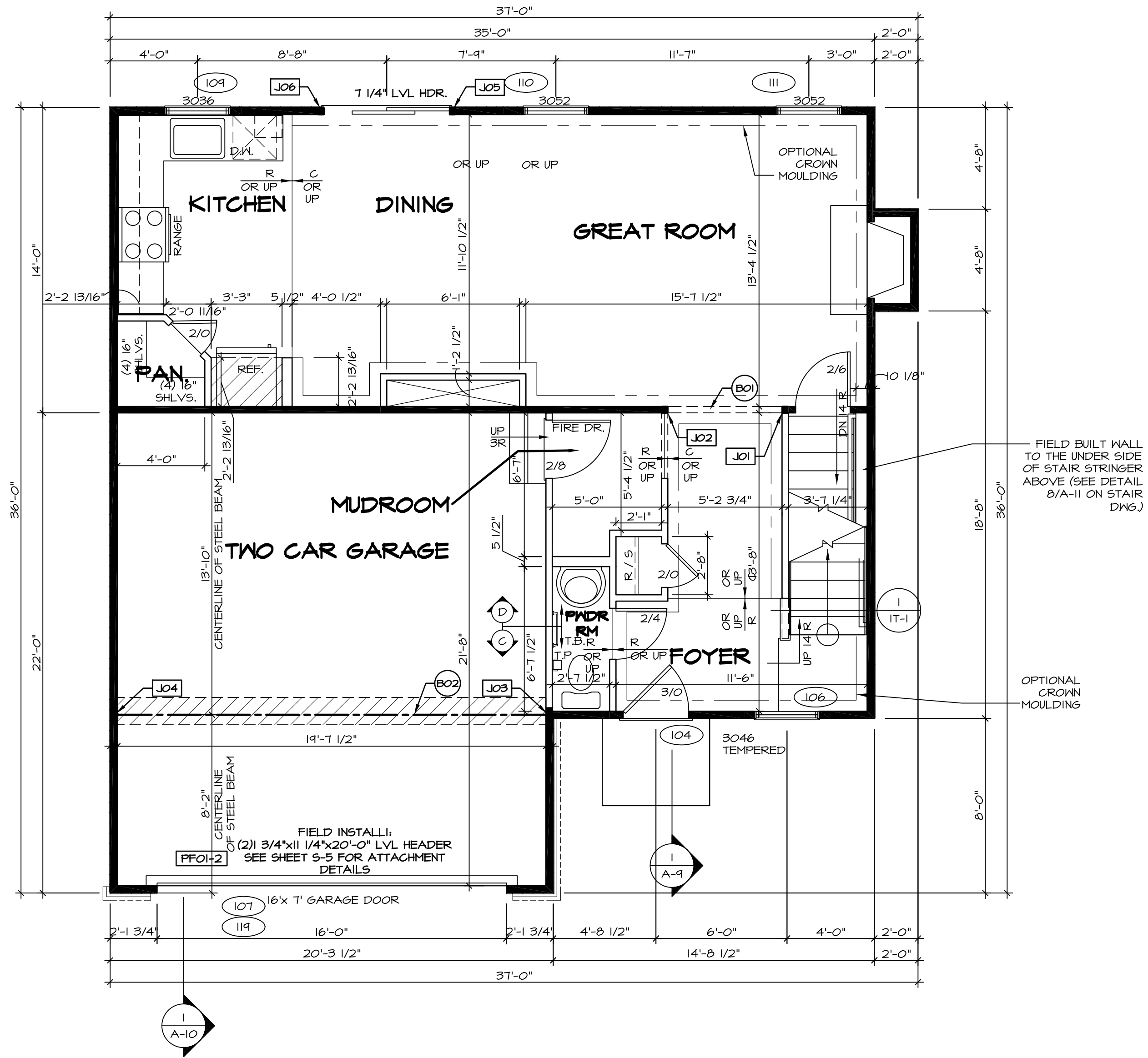
LEGEND

	BEARING WALL
	NON BEARING WALL
	INDICATES BEARING FROM POINT-LOAD ABOVE
	JACKS
	BEAM/HEADER
	PAD FOOTING
	STEEL COLUMN
	PORTAL FRAME
	JOIST/TRUSS
	LVL
	ENGINEERING PAGE NUMBER

SEE FC DETAILS FOR FRAMING CONNECTORS

- FLOOR PLAN NOTES**
- ALL HEADERS ARE (2) 2x6 w/ 2x4 WALLS OR (3) 2x6 w/ 2x6 WALLS, UNLESS OTHERWISE NOTED.
 - ALL HEADERS TO HAVE (1) 2x4 OR 2x6 JACK AND KING STUD EACH END, UNLESS OTHERWISE NOTED.
 - ALL EXTERIOR WALLS TO BE 4" w/ OSB OR 3 1/2" w/ T-PLY, ALL INTERIOR WALLS TO BE 3 1/2", UNLESS OTHERWISE NOTED.
 - HATCHED AREAS INDICATE DROPPED CEILINGS. ALL DROPPED CEILINGS ARE 12' UNLESS OTHERWISE NOTED.
 - SEE "BRACED WALL PANEL DETAIL SHEET" FOR SPECIAL WALL FRAMING LOCATIONS AND HEADER SIZES, IF APPLICABLE.
 - SEE STANDARD DETAIL CATEGORY "IT" SHEET(S) FOR INTERIOR TRIM DETAILS.
 - SEE ARCHITECTURAL DETAIL SHEET "AD" FOR HOUSE SPECIFIC INTERIOR TRIM OPTION TABLE.
 - ALL WINDOWS HAVE 1"-0 1/2" HEADER HEIGHT UNLESS OTHERWISE NOTED.
 - ALL HEADERS IN NON-BEARING WALLS SHALL BE A SINGLE FLAT 2x4 OR 2x6 ATTACHED TO CRIPPLES ABOVE, UNLESS OTHERWISE NOTED.

- GYPSUM NOTES**
- AT GARAGE:
GYPSUM BOARD AT COMMON WALLS, CEILINGS, BEAM WRAPS AND SUPPORTS PER STANDARD DETAIL FA-1(b) FIRE ASSEMBLY OR AS REQUIRED BY LOCAL CODE.
- AT STAIRS:
1/2" GYPSUM BOARD AT UNDERSIDE OF STAIRS AND WALLS IN CLOSET



FIRST FLOOR JACK SCHEDULE

IDENTIFIER	DESCRIPTION	OPTIONS	ENS. NUM.	FIELD INSTALLED
J01	JACK - (2) 2X4 SFF STUD GRADE		103	
J02	JACK - (2) 2X4 SFF STUD GRADE		103	
J03	JACK - (5) 2X4 SFF#1	GCB / GCC	105	
J04	JACK - (5) 2X4 SFF#1	GCB / GCC	105	
J05	JACK - (2) 2X4 SFF STUD GRADE	DGT	104	
J06	JACK - (2) 2X4 SFF STUD GRADE	DGT	104	

- LVL PLY TO PLY FASTENING SCHEDULE:**
- (2) PLY UP TO AND INCLUDING 11 7/8" TALL; FASTEN PLYS W/ (2) ROWS 16D NAILS AT 12" O.C.
 - (2) PLY 14" TO AND 18" TALL (INCLUSIVE); FASTEN PLYS W/ (3) ROWS 16D NAILS AT 12" O.C.
 - (2) PLY 20" TALL AND OVER; FASTEN PLYS W/ (4) ROWS 16D NAILS AT 12" O.C.
 - (3) PLY UP TO AND INCLUDING 11 7/8" TALL; FASTEN PLYS W/ (2) ROWS 16D NAILS AT 12" O.C. FROM EACH SIDE
 - (3) PLY 14" TO AND 18" TALL (INCLUSIVE); FASTEN PLYS W/ (3) ROWS 16D NAILS AT 12" O.C. FROM EACH SIDE
 - (3) PLY 20" TALL AND OVER; FASTEN PLYS W/ (4) ROWS 16D NAILS AT 12" O.C. FROM EACH SIDE

FIELD INSTALLED FIRST FLOOR BEAM/HEADER SCHEDULE

IDENTIFIER	DESCRIPTION	LENGTH	OPTIONS	ENS. NUM.	REMARKS
B01	INT HEADER - 2X8 - 2 PLY	5'-8 3/4"		103	
B02	BEAM STEEL - W12X26	20'-2"	SRI / SXS / FBA / FGA	105	
FF01-2	LVL - 11-04	20'-0"	GCB	119	PORTAL FRAME, 2 PLY, 1A

FIRST FLOOR PLAN
SCALE: 1/4" = 1'-0"

REMARKS

REV. NO. DATE DESCRIPTION

1 08/05/16 N.L. - DRAWING ALIGNMENT

2 7/7/17 DRH - T-PLY CONVERSION

NVR, Inc., owner, expressly reserves its common law copyright in these plans. These plans are not to be reproduced, changed, adapted in any way, or otherwise used, without the prior written consent of NVR, Inc.

NVR
Architectural Services
21 Park Plaza, Suite A
Frederick, MD 21702

SET NO. SIECO VERSION 05 DRAWN BY DATE: 2/2/2015 OPTION

MODEL SIENNA DRAWING TITLE FIRST FLOOR PLAN OPTION DESCRIPTION

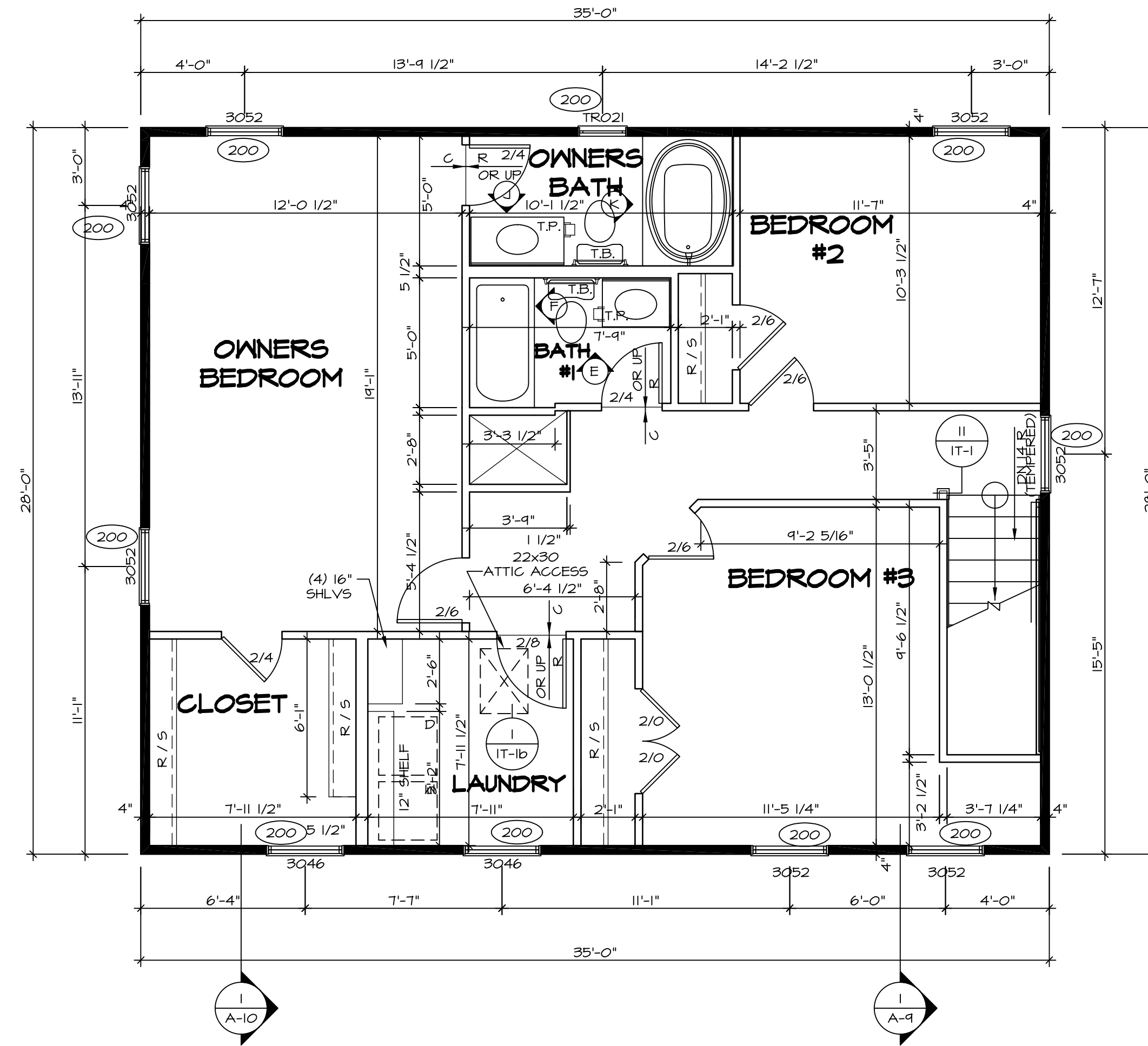
SHEET NO. A-7 24

C:\NVR\Solves\SIENNA_SIECO_05\DCI-BN-078\625043\Sheets\Lot_Spec\24 A-7 PLNT_LS.dwg 08/29/17 - 3:44 am

LEGEND	
	BEARING WALL
	NON BEARING WALL
	INDICATES BEARING FROM POINT-LOAD ABOVE
	JACKS
	BEAM/HEADER
	PAD FOOTING
	STEEL COLUMN
	PORTAL FRAME
	JOIST/TRUSS
	LVL
	ENGINEERING PAGE NUMBER
SEE FC DETAILS FOR FRAMING CONNECTORS	

FLOOR PLAN NOTES

- ALL HEADERS ARE (2) 2x6 w/ 2x4 WALLS OR (3) 2x6 w/ 2x6 WALLS, UNLESS OTHERWISE NOTED.
- ALL HEADERS TO HAVE (1) 2x4 OR 2x6 JACK AND KING STUD EACH END, UNLESS OTHERWISE NOTED.
- ALL EXTERIOR WALLS TO BE 4" w/ OSB OR 3 1/2" w/ T-PLY, ALL INTERIOR WALLS TO BE 3 1/2", UNLESS OTHERWISE NOTED.
- HATCHED AREAS INDICATE DROPPED CEILING. ALL DROPPED CEILING ARE 12" UNLESS OTHERWISE NOTED.
- SEE "BRACED WALL PANEL DETAIL SHEET" FOR SPECIAL WALL FRAMING LOCATIONS AND HEADER SIZES, IF APPLICABLE.
- SEE STANDARD DETAIL CATEGORY "IT" SHEET(S) FOR INTERIOR TRIM DETAILS.
- SEE ARCHITECTURAL DETAIL SHEET "AD" FOR HOUSE SPECIFIC INTERIOR TRIM OPTION TABLE.
- ALL WINDOWS HAVE 7'-0 1/2" HEADER HEIGHT UNLESS OTHERWISE NOTED.
- ALL HEADERS IN NON-BEARING WALLS SHALL BE A SINGLE FLAT 2X4 OR 2X6 ATTACHED TO CRIPPLES ABOVE, UNLESS OTHERWISE NOTED.



SECOND FLOOR PLAN
SCALE: 1/4" = 1'-0"

REV. NO.	DATE	REMARKS
1	08/09/16	N.L. - DRAWING ALIGNMENT
2	7/7/17	DRH - T-PLY CONVERSION

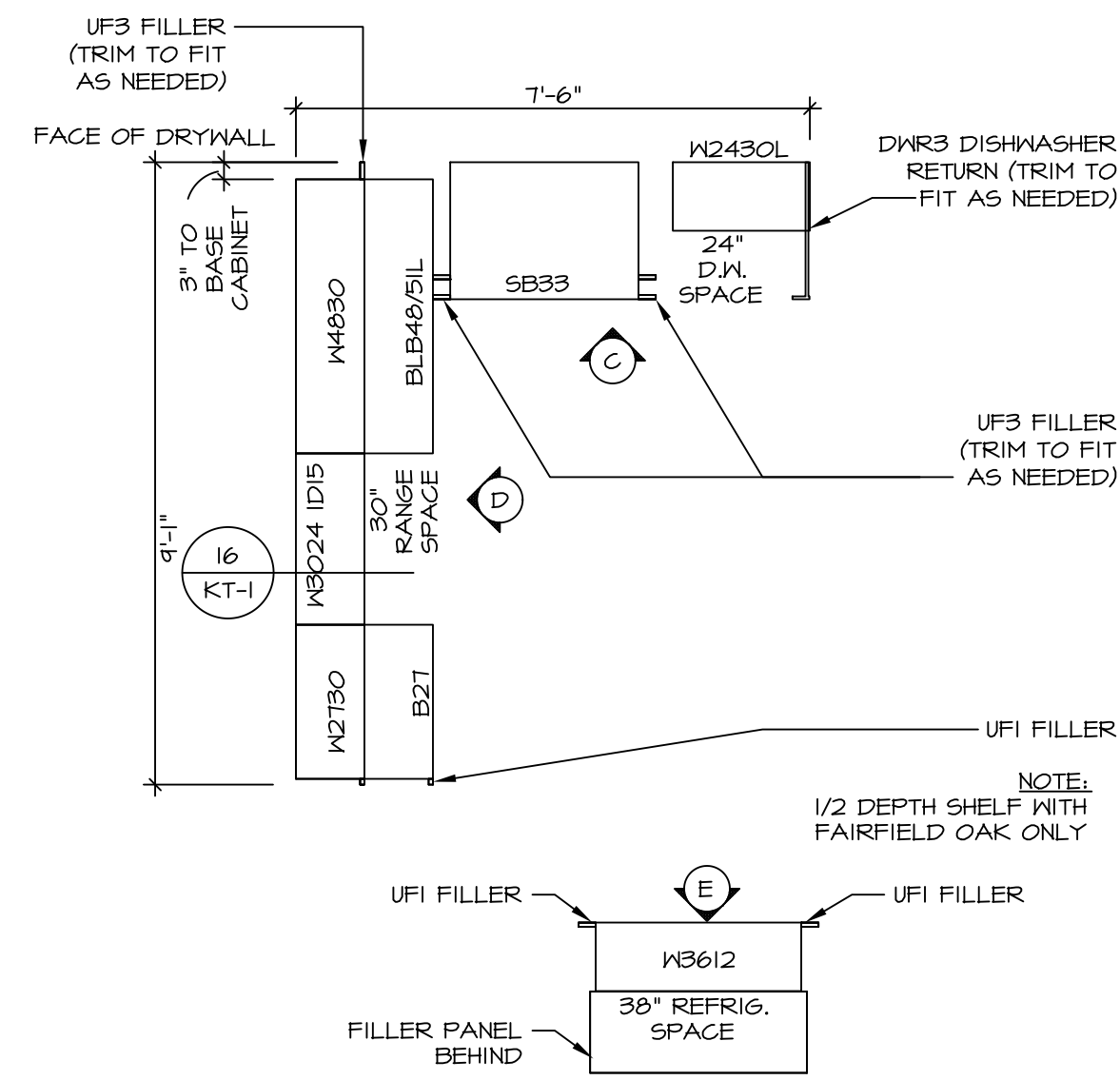
NVR, Inc., owner, expressly reserves its copyright in these plans. These plans are not to be reproduced, changed, copied, or otherwise used in any way without the written consent of NVR, Inc.



SET NO. SIECO	VERSION 05
DRAWN BY	DATE: 2/2/2015
OPTION	

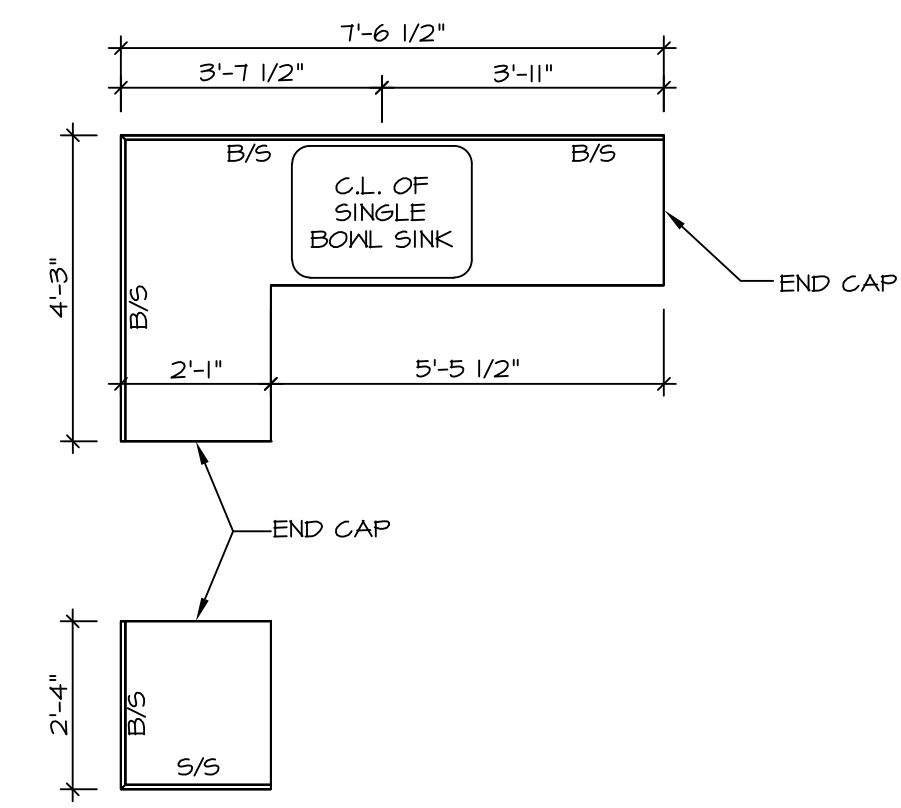
MODEL	SIENNA
DRAWING TITLE	SECOND FLOOR PLAN
OPTION DESCRIPTION	

SHEET NO.	A-8
26	



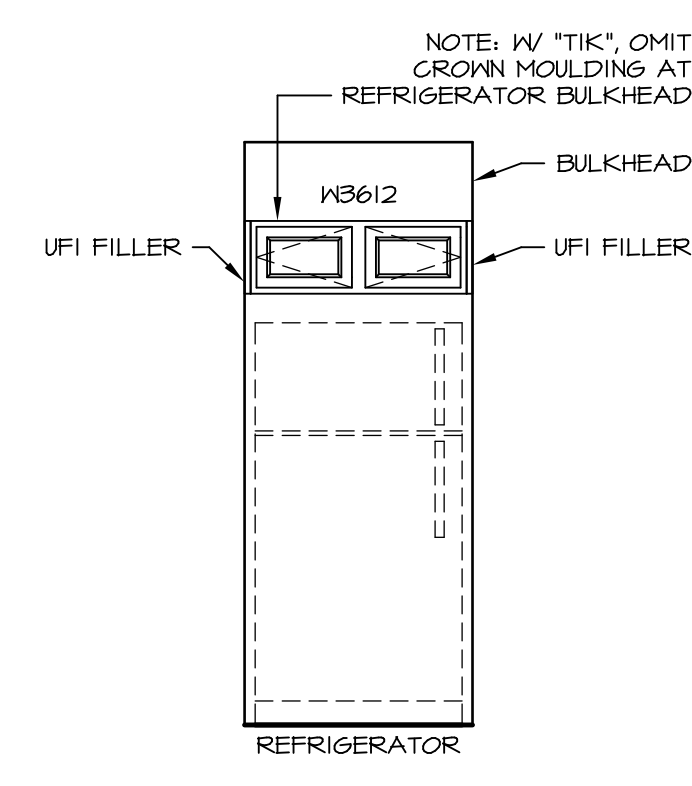
CABINET PLAN - KC-1924

STANDARD KITCHEN w/ 30" WALL CABINETS SCALE: 3/8" = 1'-0" 1 A-12

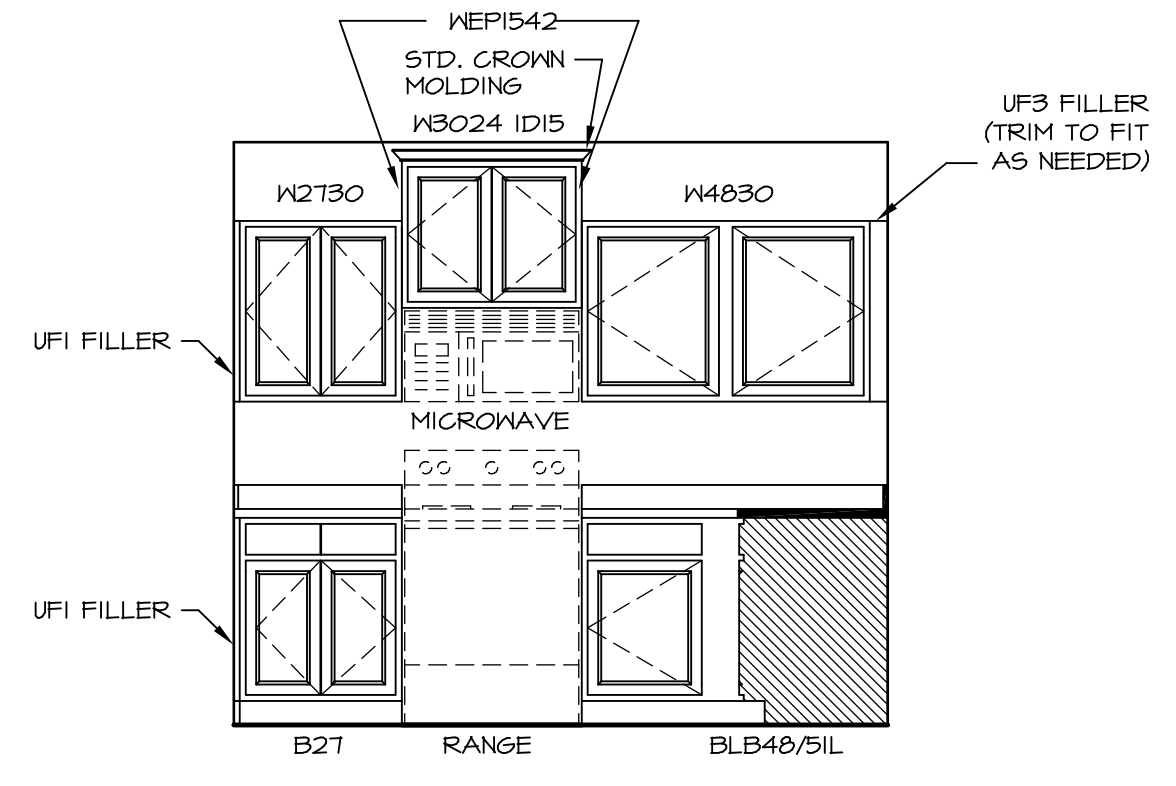


COUNTERTOP PLAN - KT-1924

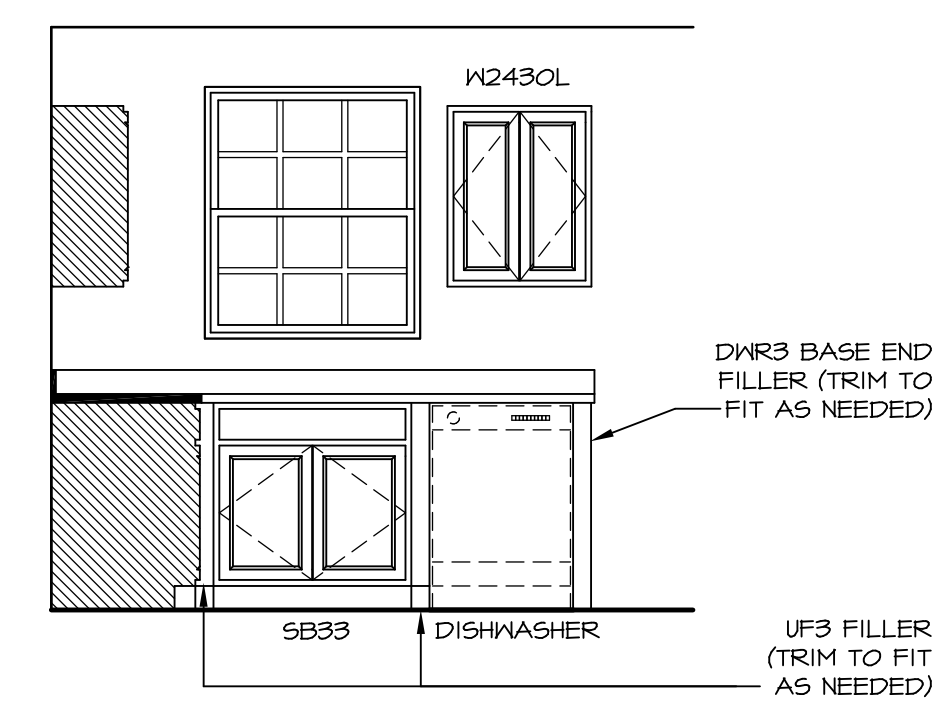
STANDARD KITCHEN w/ 30" WALL CABINETS SCALE: 3/8" = 1'-0" 3 A-12



KITCHEN ELEVATION E
SCALE: 3/8" = 1'-0"



KITCHEN ELEVATION D
SCALE: 3/8" = 1'-0"

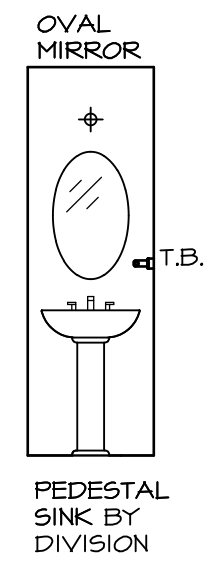


KITCHEN ELEVATION C
SCALE: 3/8" = 1'-0"

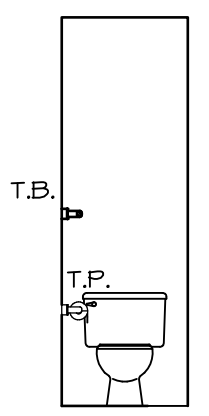
SHEET NO. A-12	MODEL SIENNA	SET NO. SIECO VERSION 05	OPTION OPTION
	DRAWING TITLE KITCHENS	DRAWN BY DATE: 2/2/2015	
32	OPTION DESCRIPTION		
REMARKS			

NVR
NVR, Inc.
Architectural Services
Architects
21 Bay Street, Suite A
Frederick, MD 21702

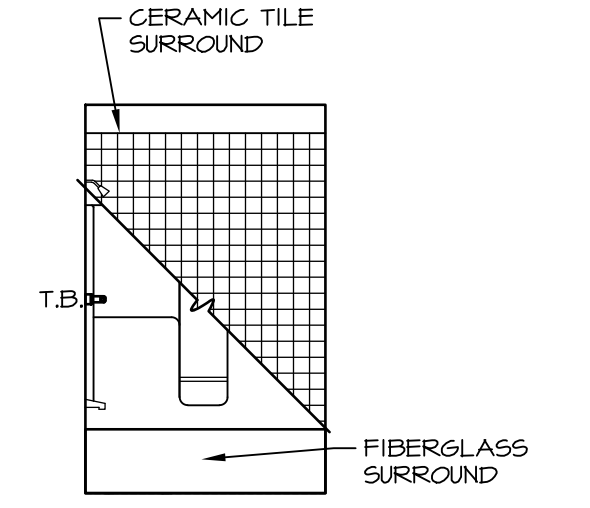
NVR, Inc., owner, expressly reserves its common law copyright in these architectural plans. These plans are not to be reproduced, changed, adapted, or otherwise used in any way without the prior written consent of NVR, Inc.



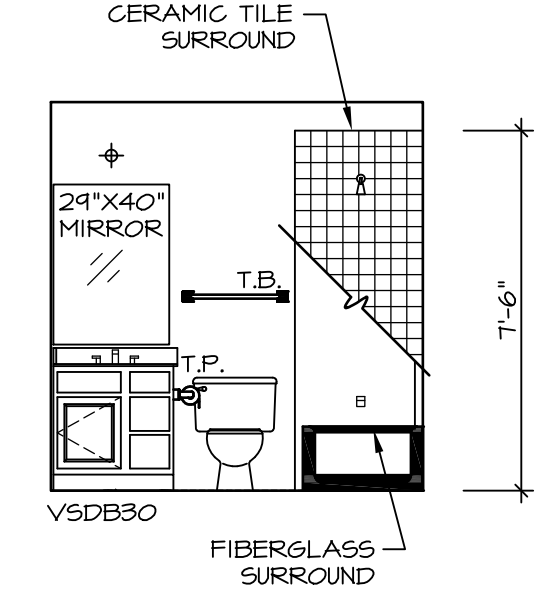
D POWDER ROOM
SCALE: 1/4" = 1'-0"



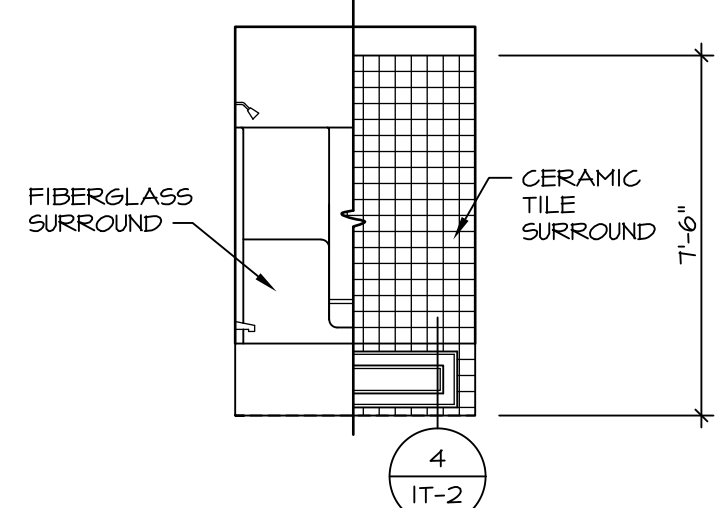
C POWDER ROOM
SCALE: 1/4" = 1'-0"



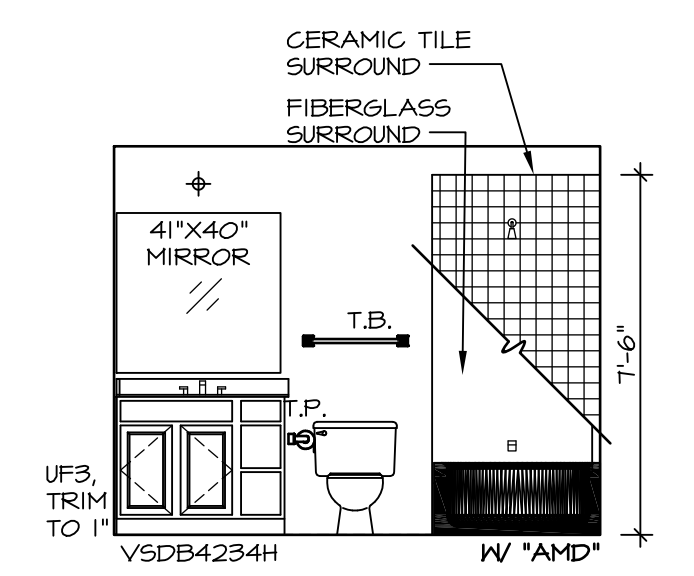
F BATH #1
SCALE: 1/4" = 1'-0"



E BATH #1
SCALE: 1/4" = 1'-0"



K OWNER'S BATH (AMD)
SCALE: 1/4" = 1'-0"



J OWNER'S BATH (AMD)
SCALE: 1/4" = 1'-0"

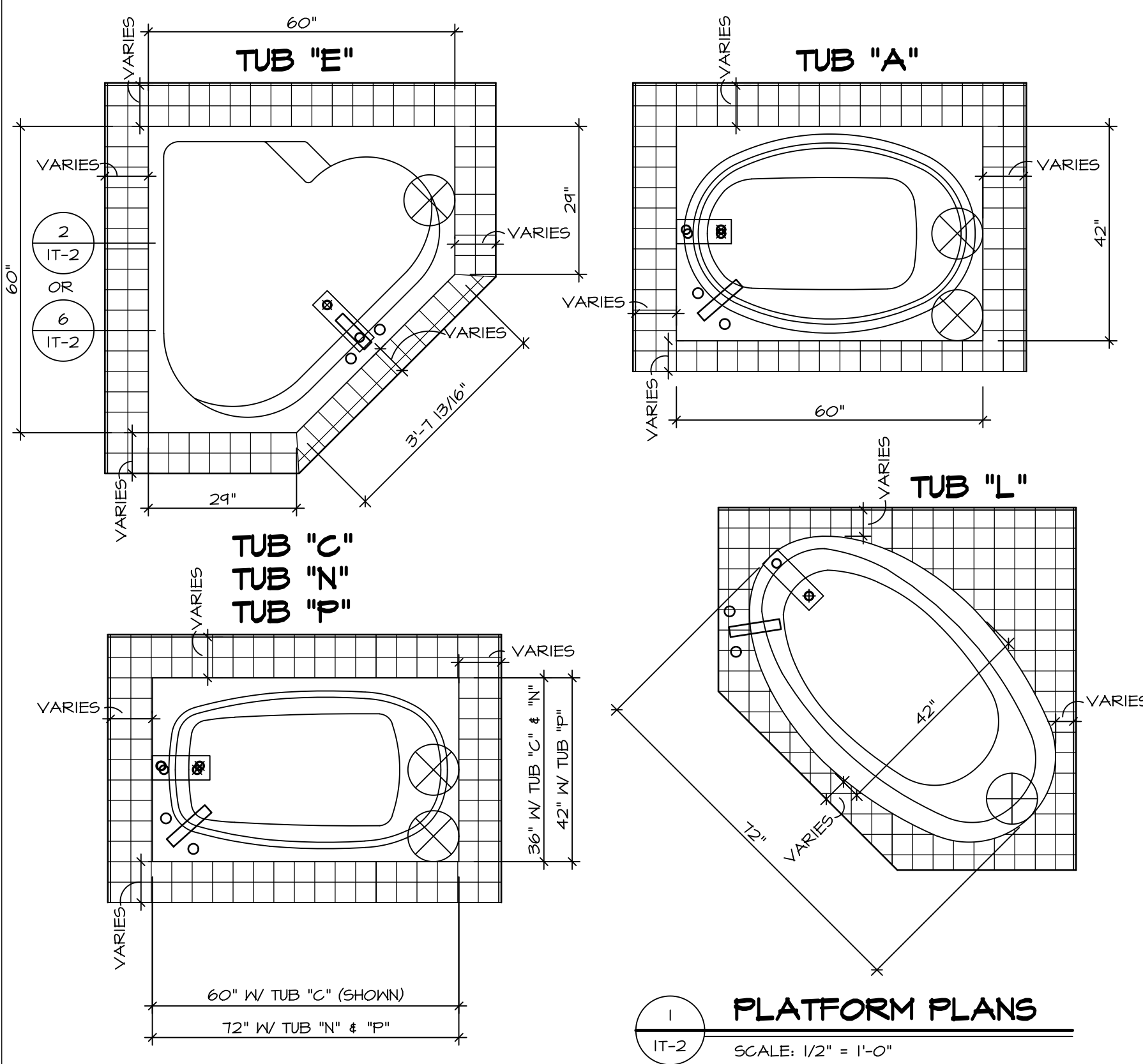
NOTES:

1. TEMPERED GLASS SHOWER ENCLOSURE WITH SWING DOOR OR OPTIONAL SLIDING DOOR BY DIVISION
2. TUB ACCESS PANELS PROVIDED AS NEEDED, ALL MATERIALS BY DIVISION
3. REFER TO SHEET D-II FOR TUB AND SHOWER DETAILS.
4. ALL VSDB24-42 DRAWERS TO BE SET ON RIGHT HAND.
5. BATH ELEVATIONS ARE SHOWN PER PLAN.

SHEET NO. A-13	MODEL SIENNA	DRAWING TITLE BATH ELEVATIONS	REV. NO.	DATE	REMARKS
			1	08/05/16	N.L. - DRAWING ALIGNMENT
OPTION DESCRIPTION	OPTION				
33					

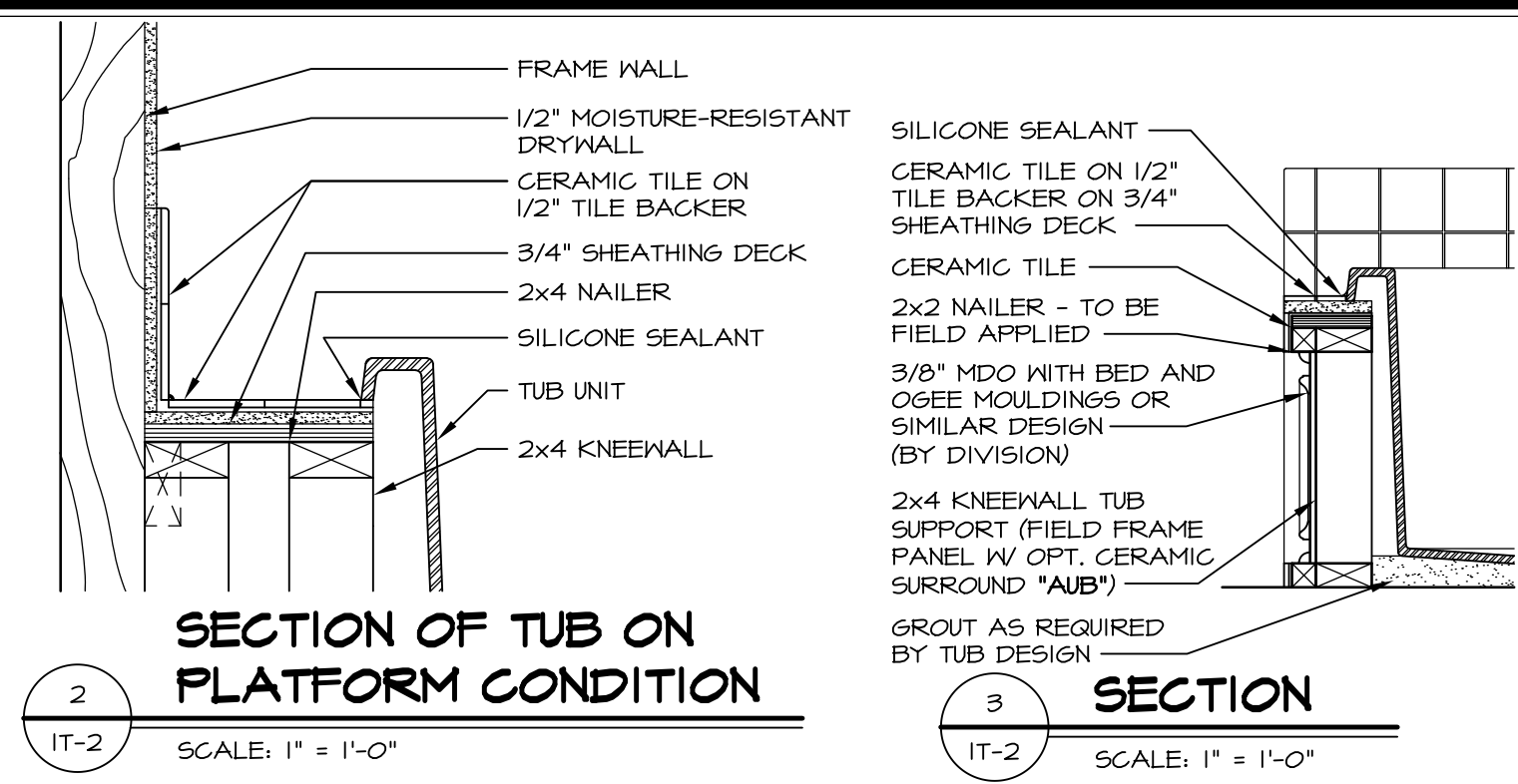
NVR
NVR, Inc.
Architectural Services
Architects
21 Park Plaza, Suite A
Frederick, MD 21702

NVR, Inc., owner, expressly reserves its copyright in these plans. These plans are not to be reproduced, changed, adapted, or otherwise used in any way without the written consent of NVR, Inc.

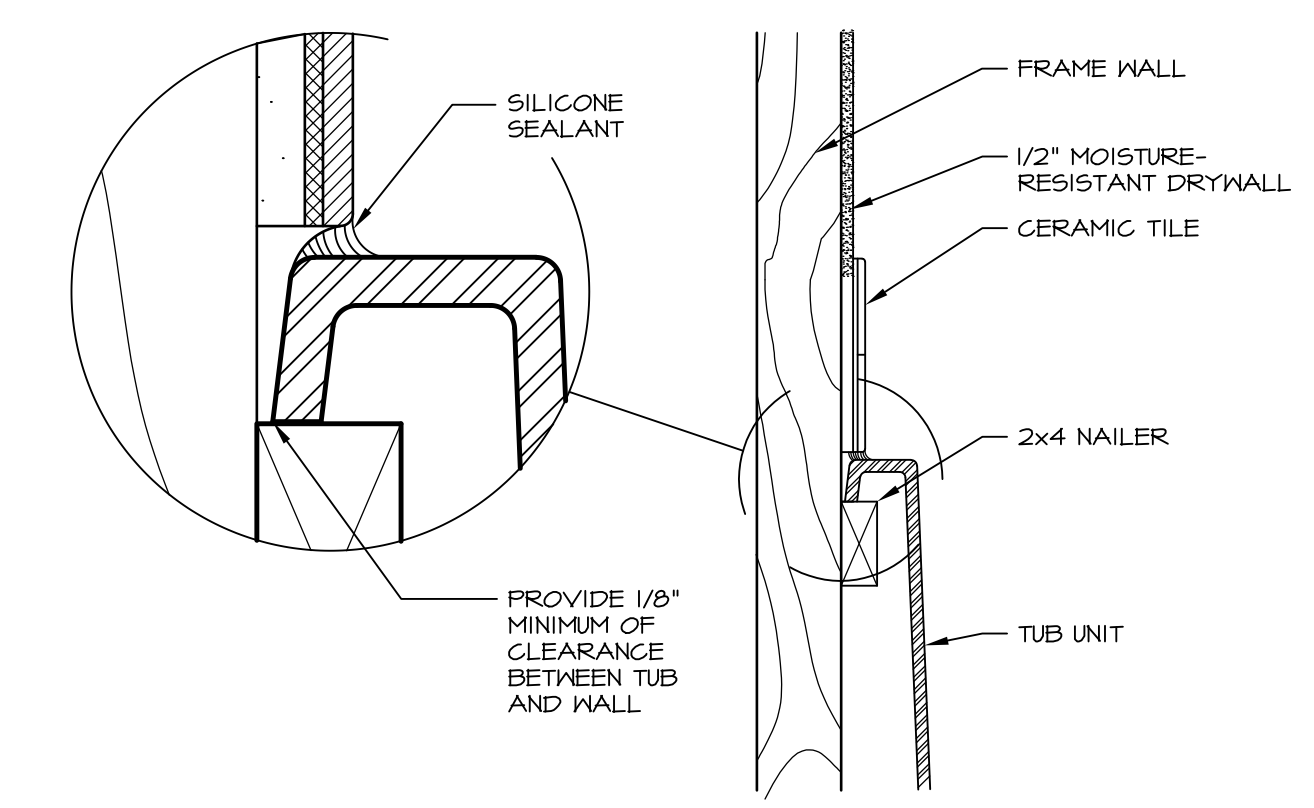


1 PLATFORM PLANS
SCALE: 1/2" = 1'-0"

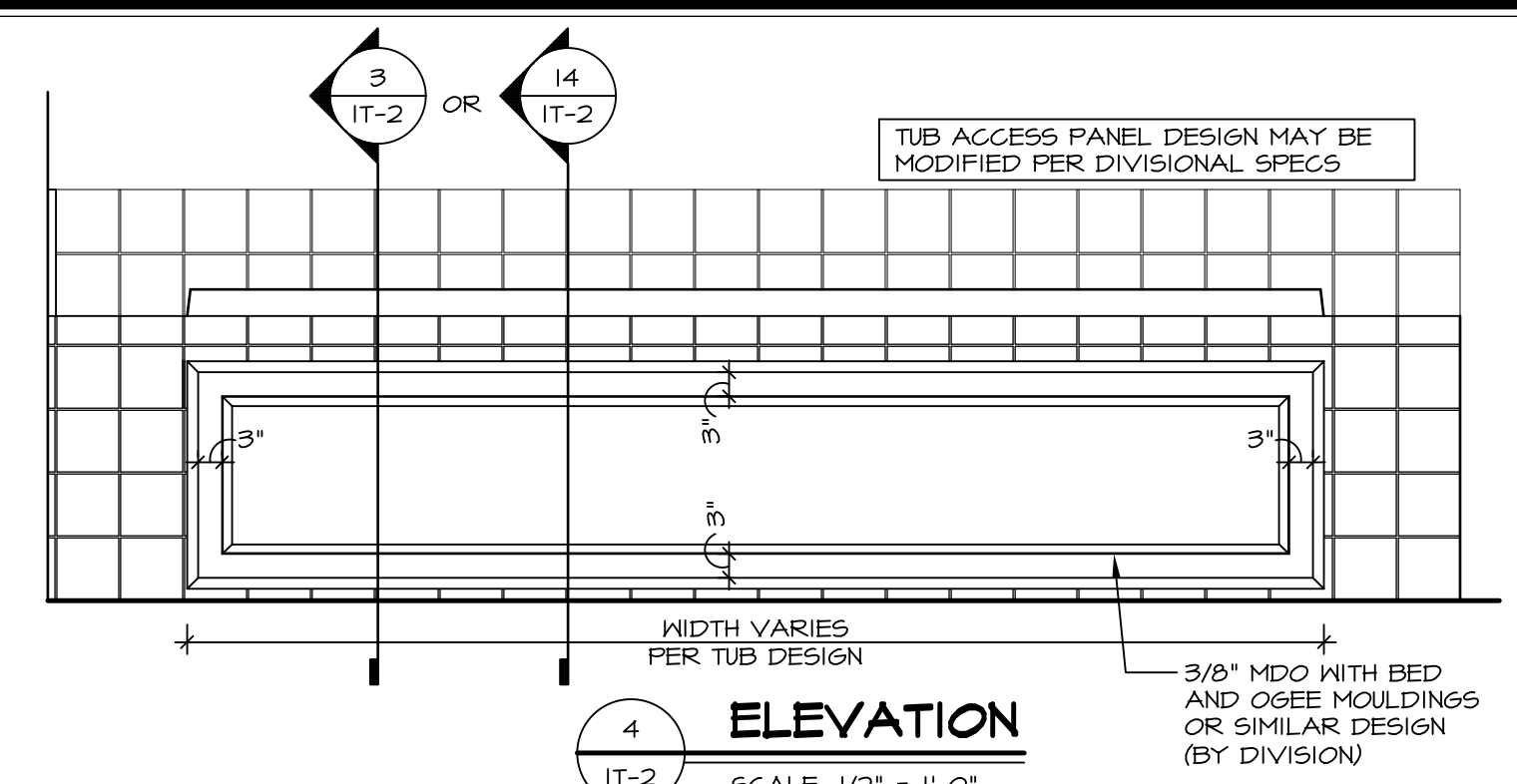
TUB	MANUF.	HEIGHT	WIDTH	LENGTH	TUB DECK PANEL HEIGHT
"A"	KOHLER/ STERLING	18 3/4"	42"	60"	17 1/8"
"C"	KOHLER/ STERLING	18 3/4"	36"	60"	17 1/8"
"E"	KOHLER/ STERLING	19 1/2"	60"	60"	17 7/8"
"L"	KOHLER/ STERLING	18 1/2"	42"	72"	16 7/8"
"N"	KOHLER/ STERLING	18 3/4"	36"	72"	17 1/8"
"P"	KOHLER/ STERLING	18 3/4"	42"	72"	17 1/8"



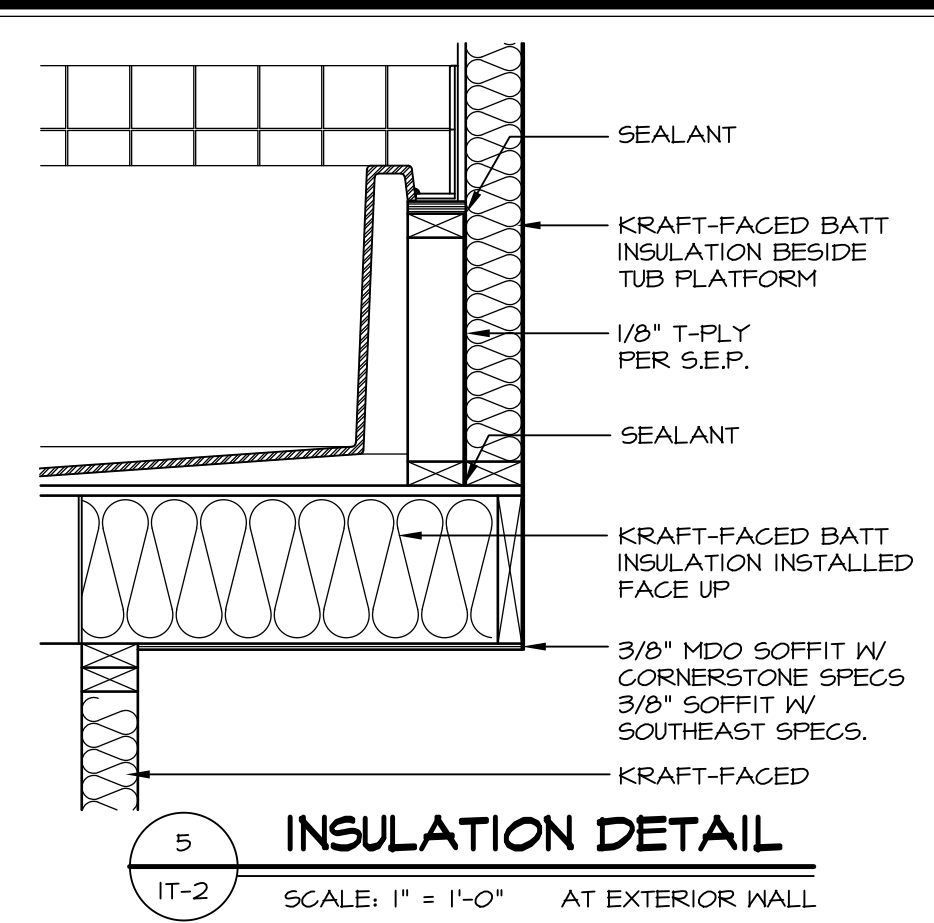
2 SECTION OF TUB ON PLATFORM CONDITION
SCALE: 1" = 1'-0"



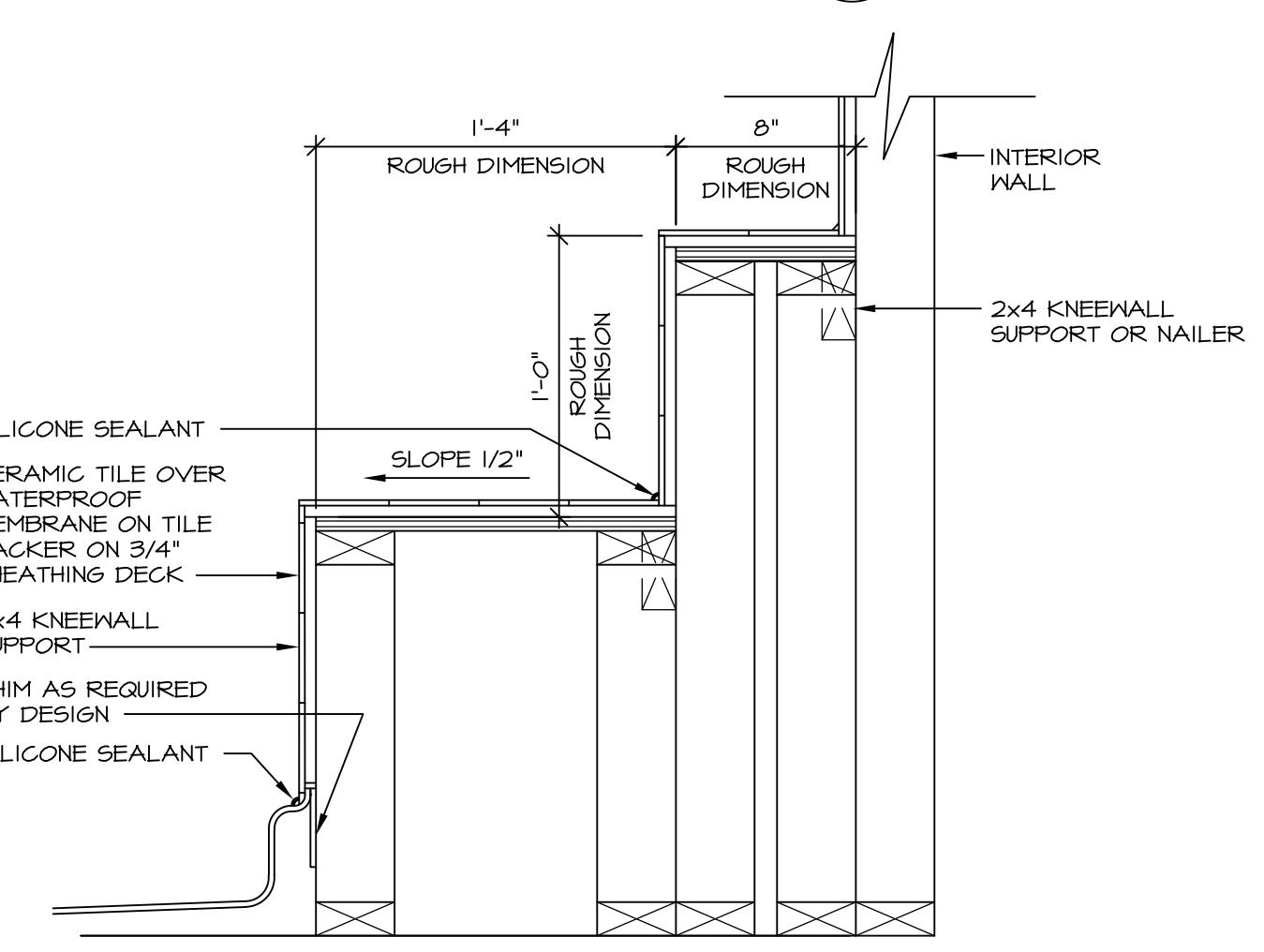
3 SECTION OF TUB TO WALL CONDITION
SCALE: 1 1/2" = 1'-0"



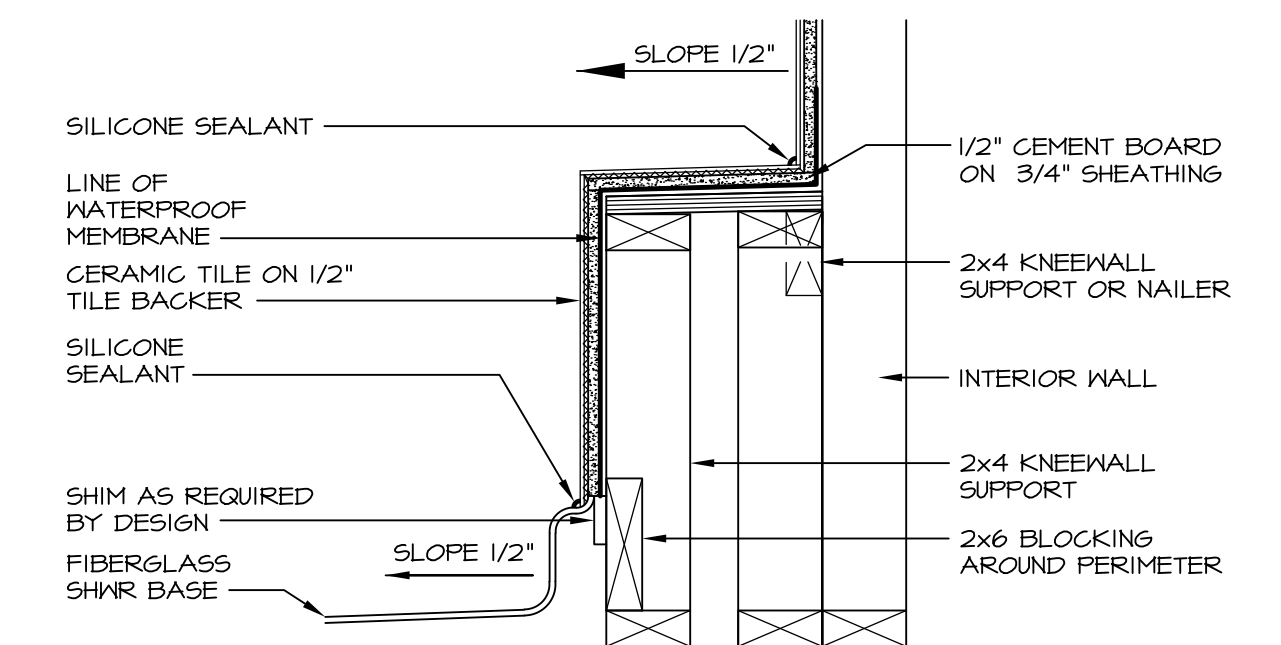
4 ELEVATION
SCALE: 1/2" = 1'-0"



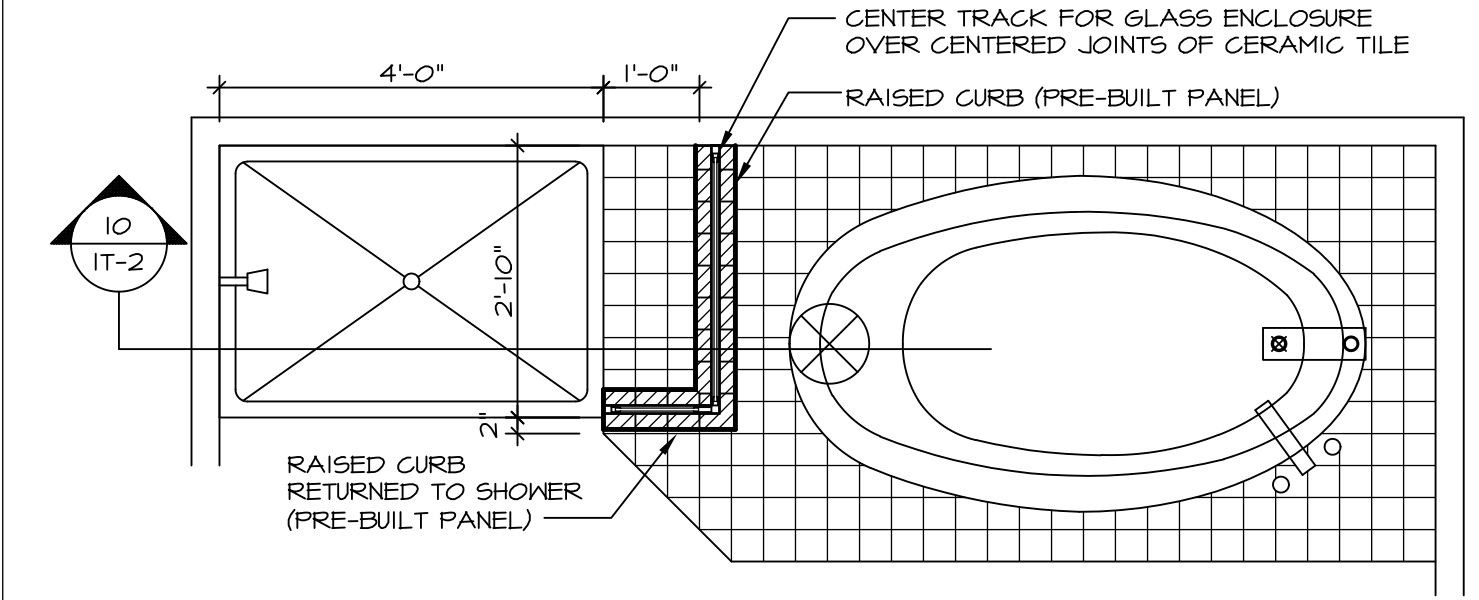
5 INSULATION DETAIL
SCALE: 1" = 1'-0" AT EXTERIOR WALL



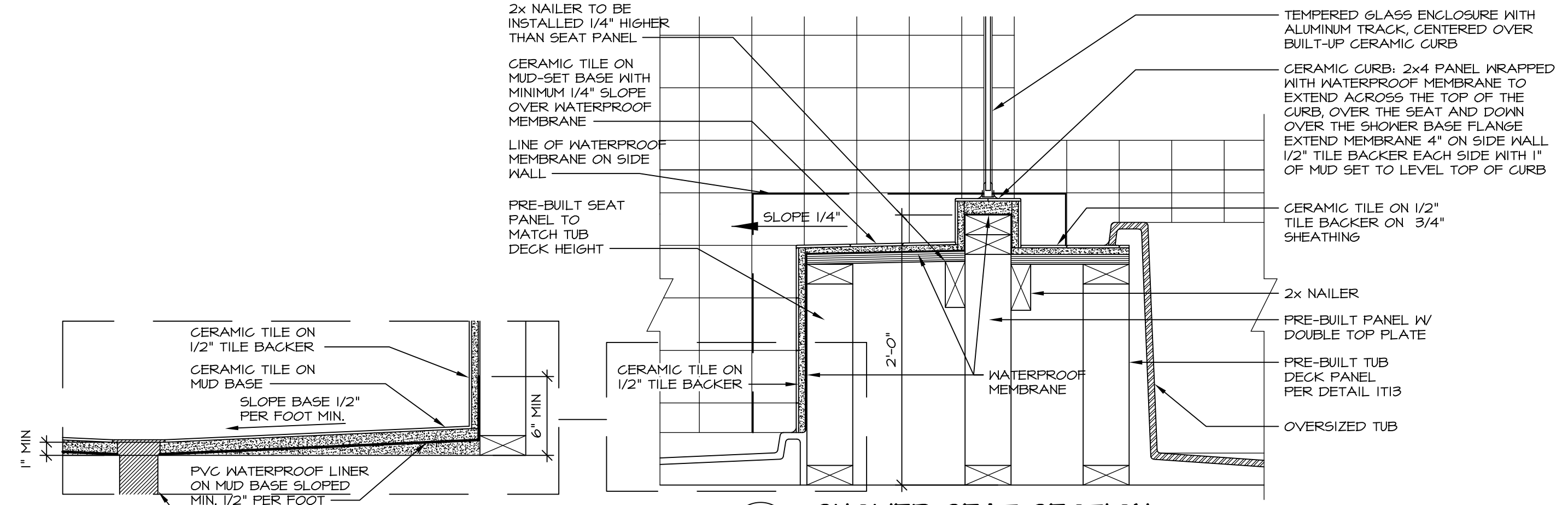
6 SECTION OF SHOWER SEAT AND SHELF
SCALE: 1 1/2" = 1'-0"



7 SECTION OF SHOWER SEAT
SCALE: 1-1/2" = 1'-0" FIBERGLASS SHOWER BASE



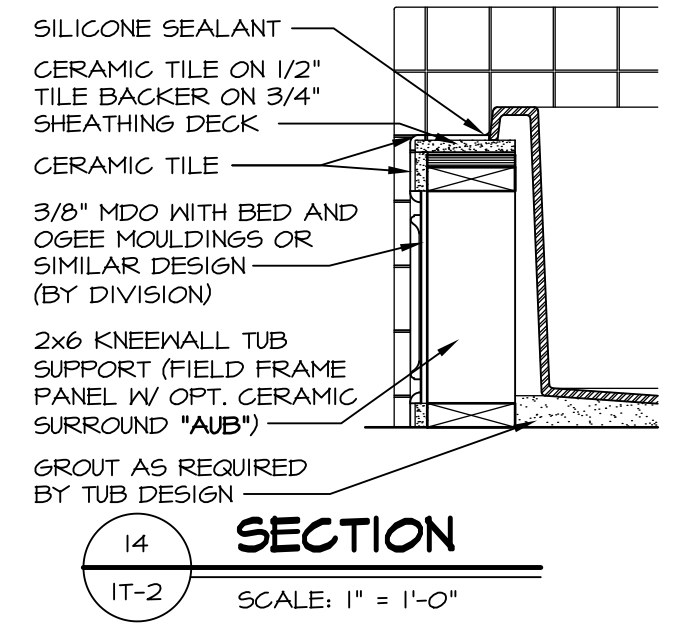
9 SHOWER SEAT PLAN / DETAIL
SCALE: 1/2" = 1'-0"



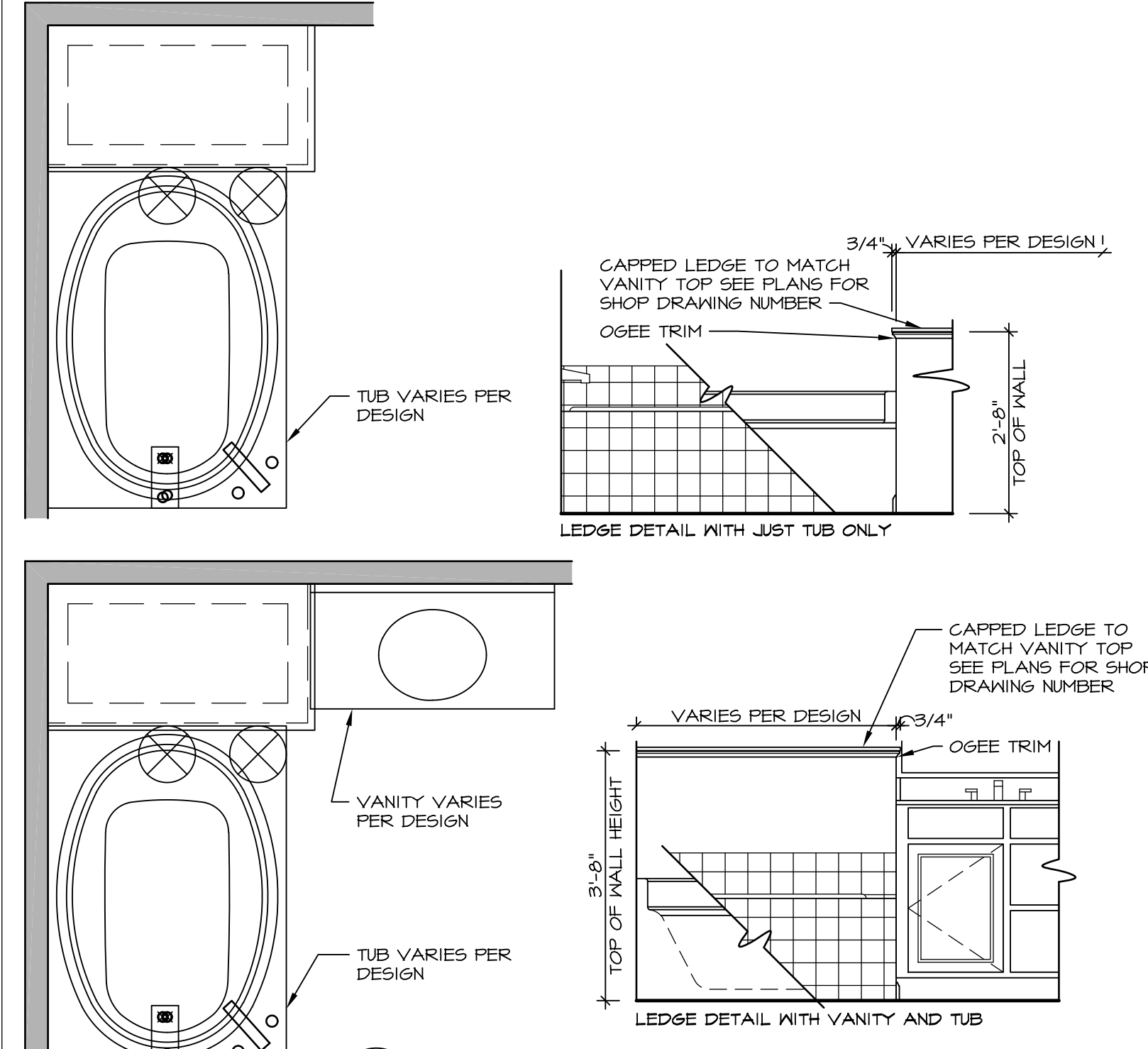
10 SHOWER SEAT SECTION
SCALE: 1-1/2" = 1'-0"



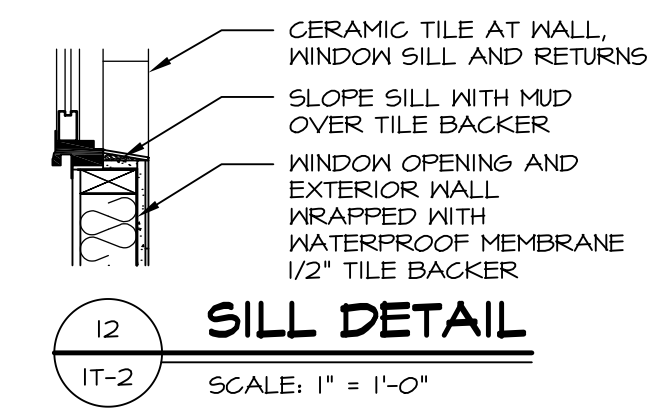
11 ALTERNATE SHOWER PAN DETAIL



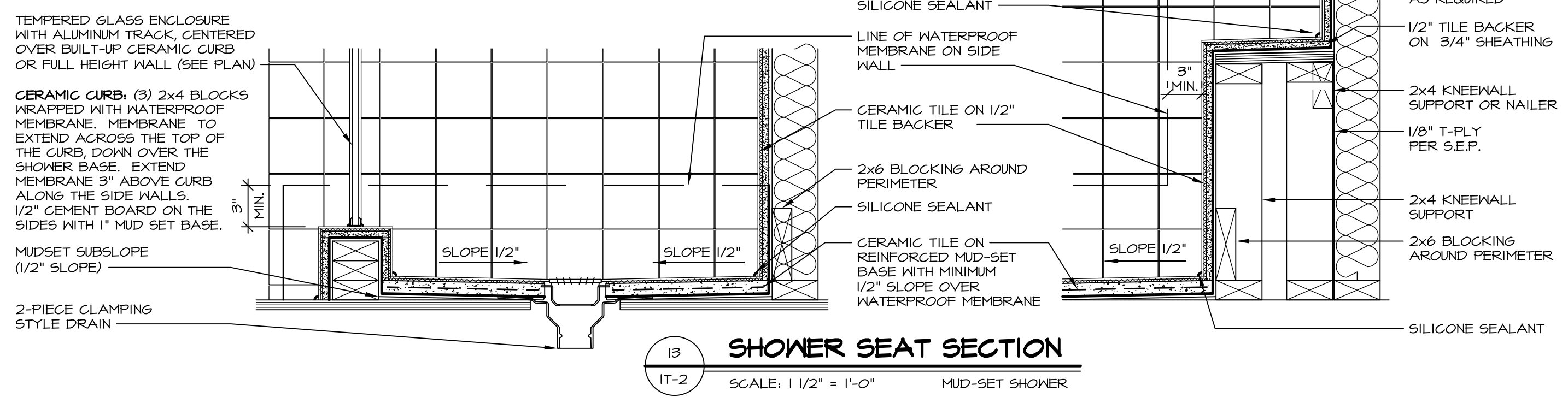
12 SECTION
SCALE: 1" = 1'-0"



11 BATHROOM LEDGE DETAIL
SCALE: 1/2" = 1'-0"



12 SILL DETAIL
SCALE: 1" = 1'-0"



13 SHOWER SEAT SECTION
SCALE: 1 1/2" = 1'-0" MUD-SET SHOWER

REVISIONS

REV. NO.	DATE	DESCRIPTION
1	5/11/17	ISSUE FOR PERMIT
2	5/11/17	ISSUE FOR PERMIT
3	5/11/17	ISSUE FOR PERMIT
4	5/11/17	ISSUE FOR PERMIT
5	5/11/17	ISSUE FOR PERMIT
6	5/11/17	ISSUE FOR PERMIT
7	5/11/17	ISSUE FOR PERMIT
8	5/11/17	ISSUE FOR PERMIT
9	5/11/17	ISSUE FOR PERMIT
10	5/11/17	ISSUE FOR PERMIT
11	5/11/17	ISSUE FOR PERMIT
12	5/11/17	ISSUE FOR PERMIT
13	5/11/17	ISSUE FOR PERMIT
14	5/11/17	ISSUE FOR PERMIT
15	5/11/17	ISSUE FOR PERMIT
16	5/11/17	ISSUE FOR PERMIT
17	5/11/17	ISSUE FOR PERMIT
18	5/11/17	ISSUE FOR PERMIT
19	5/11/17	ISSUE FOR PERMIT
20	5/11/17	ISSUE FOR PERMIT

REMARKS

1. REMOVE TUB ACCESS PANEL REF. (085 #15 8414)

2. REVISED DETAIL 1 AND 11 TO REMOVE TUB ACCESS PANEL REF. (085 #15 8414)

3. REVISED DETAIL 1 AND 11 TO REMOVE TUB ACCESS PANEL REF. (085 #15 8414)

4. REVISED DETAIL 1 AND 11 TO REMOVE TUB ACCESS PANEL REF. (085 #15 8414)

5. REVISED DETAIL 1 AND 11 TO REMOVE TUB ACCESS PANEL REF. (085 #15 8414)

6. REVISED DETAIL 1 AND 11 TO REMOVE TUB ACCESS PANEL REF. (085 #15 8414)

7. REVISED DETAIL 1 AND 11 TO REMOVE TUB ACCESS PANEL REF. (085 #15 8414)

8. REVISED DETAIL 1 AND 11 TO REMOVE TUB ACCESS PANEL REF. (085 #15 8414)

9. REVISED DETAIL 1 AND 11 TO REMOVE TUB ACCESS PANEL REF. (085 #15 8414)

10. REVISED DETAIL 1 AND 11 TO REMOVE TUB ACCESS PANEL REF. (085 #15 8414)

11. REVISED DETAIL 1 AND 11 TO REMOVE TUB ACCESS PANEL REF. (085 #15 8414)

12. REVISED DETAIL 1 AND 11 TO REMOVE TUB ACCESS PANEL REF. (085 #15 8414)

13. REVISED DETAIL 1 AND 11 TO REMOVE TUB ACCESS PANEL REF. (085 #15 8414)

14. REVISED DETAIL 1 AND 11 TO REMOVE TUB ACCESS PANEL REF. (085 #15 8414)

15. REVISED DETAIL 1 AND 11 TO REMOVE TUB ACCESS PANEL REF. (085 #15 8414)

16. REVISED DETAIL 1 AND 11 TO REMOVE TUB ACCESS PANEL REF. (085 #15 8414)

17. REVISED DETAIL 1 AND 11 TO REMOVE TUB ACCESS PANEL REF. (085 #15 8414)

18. REVISED DETAIL 1 AND 11 TO REMOVE TUB ACCESS PANEL REF. (085 #15 8414)

19. REVISED DETAIL 1 AND 11 TO REMOVE TUB ACCESS PANEL REF. (085 #15 8414)

20. REVISED DETAIL 1 AND 11 TO REMOVE TUB ACCESS PANEL REF. (085 #15 8414)

SET NO. NVR
VERSION
DRAWN BY
DATE
OPTION

STANDARD DETAILS
DRAWING TITLE
INTERIOR TRIM DETAILS
BATH DETAILS
OPTION DESCRIPTION

IT-2

NVR, Inc., owner, expressly reserves its common law copyright and other property rights in these plans. These plans are not to be reproduced, copied, or otherwise used in any way without the prior written consent of NVR, Inc.

NVR
NVR, Inc.
Architectural Services
5285 Westpark Drive
Frederick, MD 21703

C:\Users\epeterson\AppData\Local\Temp\Temp\NVR\Publish_8156\IT2.dwg 08/10/17 - 1:52 pm