

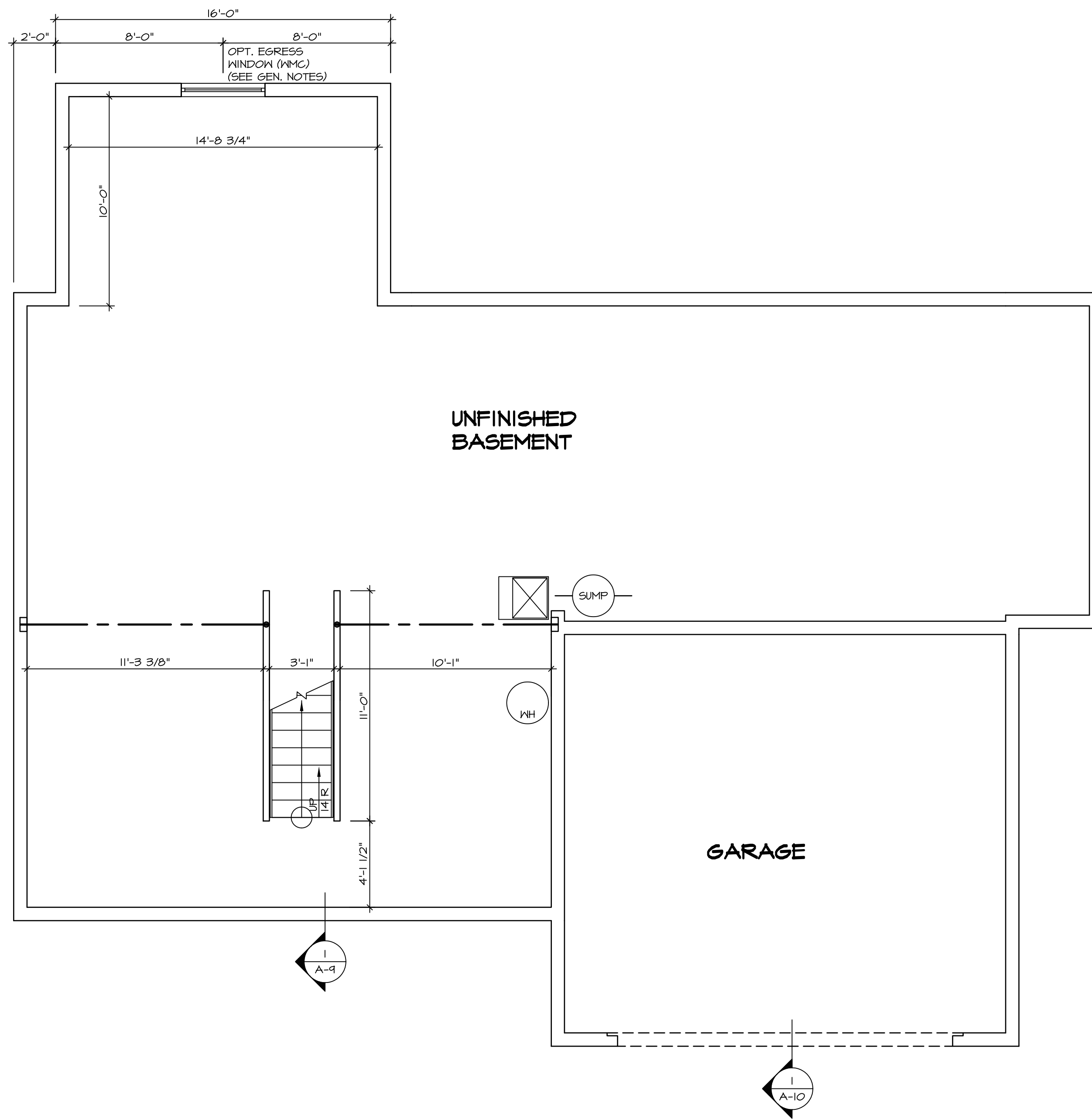
1
A-5 PLUMBING PLAN
SCALE: 1/4" = 1'-0"

| | | |
|---------------------------------|--------------------------------|----------------------|
| SHEET NO. A-5 | MODEL PALERMO | SET NO. PAL00 |
| OPTION DESCRIPTION 4B | DRAWING TITLE PLUMBING PLAN | VERSION 03 |
| | DATE: | DRAWN BY: |
| | OPTION | |

NVR
NVR, Inc.
Architectural Services
5285 Westpark Drive, Suite 100
Frederick, MD 21703

NVR, Inc., owner, expressly reserves its copyright in the above described plans. These plans are not to be reproduced, changed, copied, or otherwise used in any way without the written consent of NVR, Inc.

| REV. NO. | DATE | REMARKS |
|----------|------|---------|
| | | |
| | | |
| | | |
| | | |



LEGEND

| | |
|--|---|
| | BEARING WALL |
| | NON BEARING WALL |
| | INDICATES BEARING FROM POINT-LOAD ABOVE |
| | JACKS |
| | BEAM/HEADER |
| | PAD FOOTING |
| | STEEL COLUMN |
| | PORTAL FRAME |
| | JOIST/TRUSS |
| | LVL |
| | ENGINEERING PAGE NUMBER |

SEE FC DETAILS FOR FRAMING CONNECTORS

- FLOOR PLAN NOTES**
1. ALL HEADERS ARE (2) 2x6 w/ 2x4 WALLS OR (3) 2x6 w/ 2x6 WALLS, UNLESS OTHERWISE NOTED.
 2. ALL HEADERS TO HAVE (1) 2x4 OR 2x6 JACK EACH END, UNLESS OTHERWISE NOTED.
 3. ALL EXTERIOR WALLS TO BE 4" AND ALL INTERIOR WALLS TO BE 3 1/2", UNLESS OTHERWISE NOTED.
 4. HATCHED AREAS INDICATE DROPPED CEILINGS. ALL DROPPED CEILINGS ARE 12" UNLESS OTHERWISE NOTED.
 5. SEE "BRACED WALL PANEL DETAIL SHEET" FOR SPECIAL WALL FRAMING LOCATIONS AND HEADER SIZES, IF APPLICABLE.
 6. SEE STANDARD DETAIL CATEGORY "IT" SHEET(S) FOR INTERIOR TRIM DETAILS.
 7. SEE ARCHITECTURAL DETAIL SHEET "AD" FOR HOUSE SPECIFIC INTERIOR TRIM OPTION TABLE.
 8. ALL WINDOWS HAVE 7'-0" 1/2" HEADER HEIGHT UNLESS OTHERWISE NOTED.
 9. ALL CASED OPENINGS AT T-11", UNLESS OTHERWISE NOTED.

GYPSUM NOTES

AT GARAGE:
GYPSUM BOARD AT COMMON WALLS, CEILINGS, BEAM WRAPS AND SUPPORTS PER STANDARD DETAIL FA-1(b) FIRE ASSEMBLIES OR AS REQUIRED BY LOCAL CODE.

AT STAIRS:
1/2" GYPSUM BOARD AT UNDERSIDE OF STAIRS AND WALLS IN CLOSET

BASEMENT FLOOR PLAN
SCALE: 1/4" = 1'-0"

| | | | |
|--|---|---|---|
| SHEET NO. A-6 | MODEL PALERMO | SET NO. PAL00 | REMARKS |
| | DRAWING TITLE BASEMENT FLOOR PLAN | VERSION 03 | |
| OPTION DESCRIPTION 51 | DRAWN BY | DATE: | <p>REV. NO. DATE DESCRIPTION</p> <p>1 08/05/16 TH - DRAWING ALIGNMENT</p> |
| | OPTION | | |
| <p>NVR Architectural Services 5285 Washington Blvd, Suite 100 Frederick, MD 21703</p> | | <p>NVR, Inc., owner, expressly reserves its common law copyright in these plans. These plans are not to be reproduced, changed, copied in any way, or otherwise used without the written consent of NVR, Inc.</p> | |
| <p>C:\NVR\Solves\PALERMO_PAL00_03\DC7-BX-018A\580805\Sheets\Lot_Specific\51_A-6_BSMF_LS.dwg</p> | | <p>11/03/17 - 3:52 am</p> | |

| FIRST FLOOR JACK SCHEDULE | | | | |
|---------------------------|-------------------------------|---------|-----------|-----------------|
| IDENTIFIER | DESCRIPTION | OPTIONS | ENG. NUM. | REMARKS |
| J106 | JACK - (2) 2X4 SPF STUD GRADE | | 1012 | |
| J107 | JACK - (2) 2X4 SPF STUD GRADE | | 1012 | |
| J108 | JACK - (2) 2X4 SPF STUD GRADE | | 1012 | |
| J120 | JACK - (4) 2X6 SPF STUD GRADE | MAA | 1019 | |
| J121 | JACK - (3) 2X6 SPF STUD GRADE | MAA | 1019 | FIELD INSTALLED |
| J122 | JACK - (3) 2X4 SPF STUD GRADE | SRH | 1090 | |
| J124 | JACK - (3) 2X4 SPH | ELD | 1021 | |
| J150 | JACK - (3) 2X4 SPF STUD GRADE | GCF | 1044 | |
| J151 | JACK - (3) 2X4 SPF STUD GRADE | GCF | 1044 | |
| J154 | JACK - (2) 2X4 SPF STUD GRADE | GCF | 1122 | |
| J155 | JACK - (2) 2X4 SPF STUD GRADE | GCF | 1122 | |
| J167 | JACK - (2) 2X4 SPF STUD GRADE | LGG | 1082 | |
| J168 | JACK - (2) 2X4 SPF STUD GRADE | LGG | 1082 | |
| J164 | JACK - (3) 2X4 SPH | ELD | | |

LVL PLY TO PLY FASTENING SCHEDULE:

1A - (2) FLY UP TO AND INCLUDING 1 7/8" TALL; FASTEN FLIES W/ (2) ROWS 16D NAILS AT 12" O.C.
 2A - (2) FLY 14" TO AND INCLUDING 18" TALL (INCLUSIVE); FASTEN FLIES W/ (3) ROWS 16D NAILS AT 12" O.C.
 3A - (2) FLY 20" TALL AND OVER; FASTEN FLIES W/ (4) ROWS 16D NAILS AT 12" O.C.
 4A - (3) FLY UP TO AND INCLUDING 11 7/8" TALL; FASTEN FLIES W/ (2) ROWS 16D NAILS AT 12" O.C. FROM EACH SIDE
 5A - (3) FLY 14" TO AND INCLUDING 18" TALL (INCLUSIVE); FASTEN FLIES W/ (3) ROWS 16D NAILS AT 12" O.C. FROM EACH SIDE
 6A - (3) FLY 20" TALL AND OVER; FASTEN FLIES W/ (4) ROWS 16D NAILS AT 12" O.C. FROM EACH SIDE

| FIRST FLOOR BEAM/HEADER SCHEDULE | | | | | |
|----------------------------------|---------------------------|------------|---------|------------|----------------------|
| IDENTIFIER | DESCRIPTION | LENGTH | OPTIONS | ENG. NUM. | REMARKS |
| B101-3 | LVL - 16 | 14'-4 1/2" | MAA | 1019 | 5A, FIELD INSTALL |
| B106-2 | LVL - 16 | 17'-4" | ZSU | 1044 | 2A, FIELD INSTALL |
| PF104-2 | EXT HEADER - 2X12 - 2 PLY | 11'-4" | GCF | 1054, 1148 | 2-PLY, FIELD INSTALL |

| LEGEND | |
|--------|---|
| | BEARING WALL |
| | NON BEARING WALL |
| | INDICATES BEARING FROM POINT-LOAD ABOVE |
| | JACKS |
| | BEAM/HEADER |
| | PAD FOOTING |
| | STEEL COLUMN |
| | PORTAL FRAME |
| | JOIST/TRUSS |
| | LVL |
| | ENGINEERING PAGE NUMBER |

SEE FC DETAILS FOR FRAMING CONNECTORS

| STEEL COLUMN SCHEDULE | | | | | |
|-----------------------|-------|--------|---------|-----------|---------|
| IDENTIFIER | STYLE | HEIGHT | OPTIONS | ENG. NUM. | REMARKS |
| | | | | | |

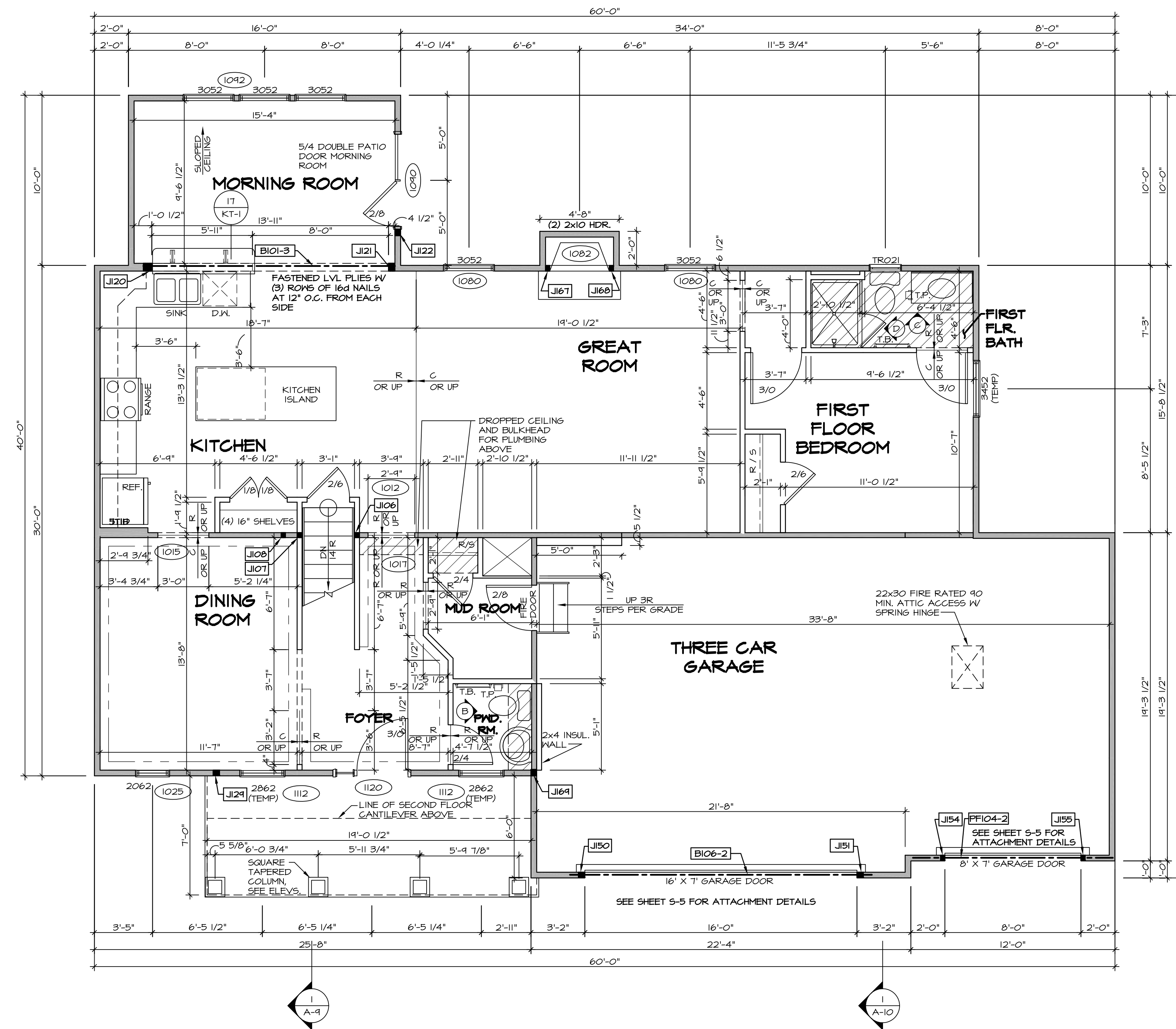
FLOOR PLAN NOTES

- ALL HEADERS ARE (2) 2x6 W/ 2x4 WALLS OR (3) 2x6 W/ 2x6 WALLS, UNLESS OTHERWISE NOTED.
- ALL HEADERS TO HAVE (1) 2x4 OR 2x6 JACK AND KING STUD EACH END, UNLESS OTHERWISE NOTED.
- ALL EXTERIOR WALLS TO BE 4" W/ OSB OR 3 1/2" W/ T-PLY, ALL INTERIOR WALLS TO BE 3 1/2", UNLESS OTHERWISE NOTED.
- HATCHED AREAS INDICATE DROPPED CEILINGS. ALL DROPPED CEILINGS ARE 12" UNLESS OTHERWISE NOTED.
- SEE "BRACED WALL PANEL DETAIL SHEET" FOR SPECIAL WALL FRAMING LOCATIONS AND HEADER SIZES, IF APPLICABLE.
- SEE STANDARD DETAIL CATEGORY "11" SHEET(S) FOR INTERIOR TRIM DETAILS.
- SEE ARCHITECTURAL DETAIL SHEET "AD" FOR HOUSE SPECIFIC INTERIOR TRIM OPTION TABLE.
- ALL WINDOWS HAVE 7'-0" 1/2" HEADER HEIGHT UNLESS OTHERWISE NOTED.
- ALL HEADERS IN NON-BEARING WALLS SHALL BE A SINGLE FLAT 2X4 OR 2X6 ATTACHED TO GRIPPLIES ABOVE, UNLESS OTHERWISE NOTED.

GYPSUM NOTES

AT GARAGE:
 GYPSUM BOARD AT COMMON WALLS, CEILING, BEAM WRAPS AND SUPPORTS PER STANDARD DETAIL FA-1(b) FIRE ASSEMBLIES OR AS REQUIRED BY LOCAL CODE.

AT STAIRS:
 1/2" GYPSUM BOARD AT UNDERSIDE OF STAIRS AND WALLS IN CLOSET



FIRST FLOOR PLAN
 SCALE: 1/4" = 1'-0"

| REV. NO. | DATE | REMARKS |
|----------|----------|--------------------------------|
| 1 | 08/04/16 | TH - DRAWING ALIGNMENT |
| 2 | 07/12/17 | SLS - T-PLY CONVERSION PROJECT |

NVR, Inc., owner, expressly reserves its copyright in the common law plans. These plans are not to be reproduced, changed, copied, or otherwise used without the written consent of NVR, Inc.

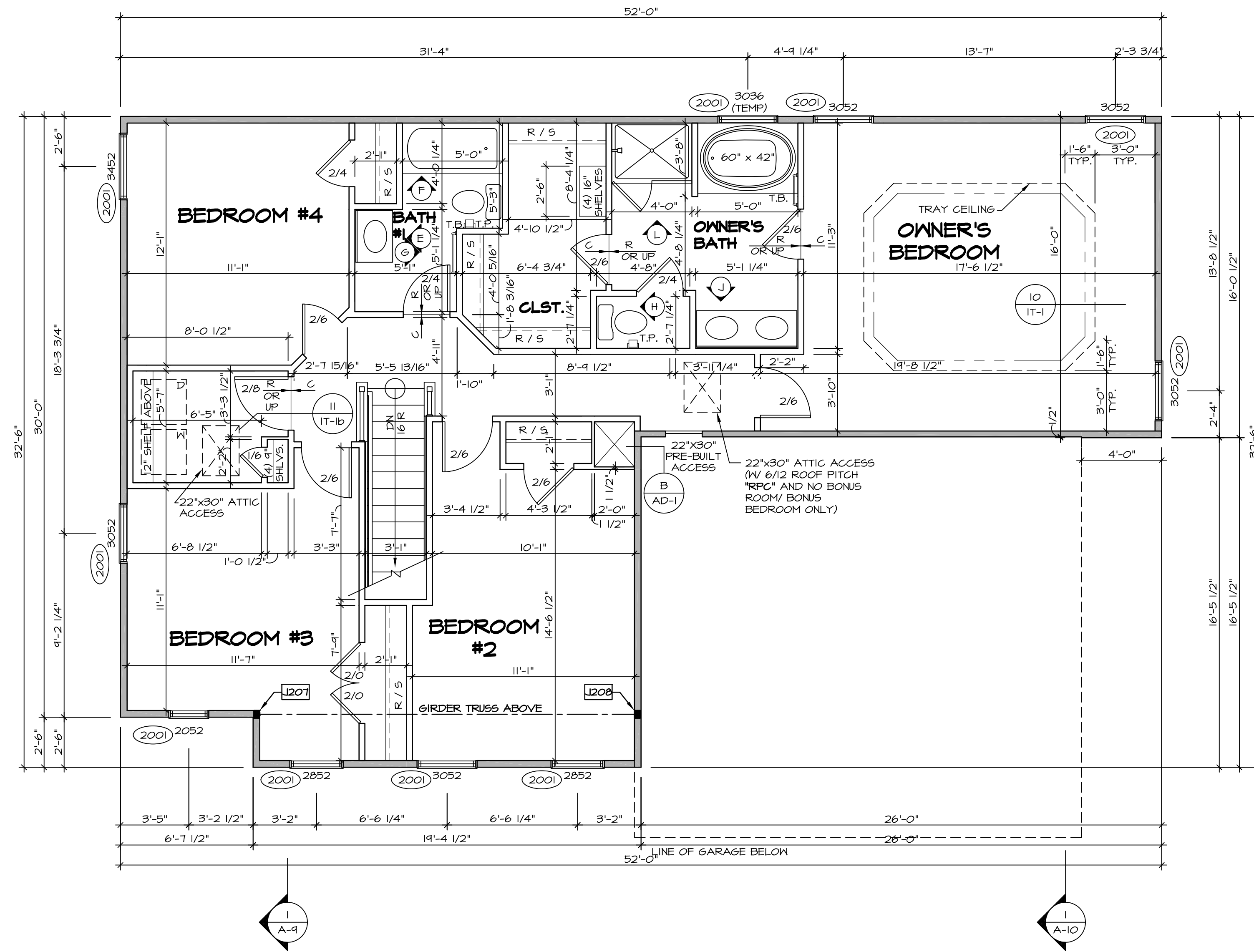
NVR
 NVR, Inc.
 Architectural Services
 5285 West
 Frederick, MD 21703

| | |
|--------------------|------------------|
| MODEL | PALEMO |
| DRAWING TITLE | FIRST FLOOR PLAN |
| OPTION DESCRIPTION | |
| SHEET NO. | A-7 |
| OPTION | 53 |

| SECOND FLOOR JACK SCHEDULE | | | | |
|----------------------------|---------------------|---------|-----------|--------------------------------|
| IDENTIFIER | DESCRIPTION | OPTIONS | ENG. NUM. | REMARKS |
| J207 | JACK - (3) 2x4 SP#1 | ELD | 2011 | EXTEND JACKS THROUGH TOP PLATE |
| J208 | JACK - (3) 2x4 SP#1 | ELD | 2011 | EXTEND JACKS THROUGH TOP PLATE |

| LEGEND | |
|--------|---|
| | BEARING WALL |
| | NON BEARING WALL |
| | INDICATES BEARING FROM POINT-LOAD ABOVE |
| | JACKS |
| | BEAM/HEADER |
| | PAD FOOTING |
| | STEEL COLUMN |
| | PORTAL FRAME |
| | JOIST/TRUSS |
| | LVL |
| | ENGINEERING PAGE NUMBER |

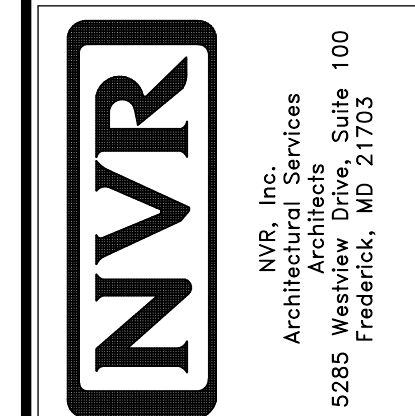
- FLOOR PLAN NOTES**
- ALL HEADERS ARE (2) 2x6 w/ 2x4 WALLS OR (3) 2x6 w/ 2x6 WALLS, UNLESS OTHERWISE NOTED.
 - ALL HEADERS TO HAVE (1) 2x4 OR 2x6 JACK AND KING STUD EACH END, UNLESS OTHERWISE NOTED.
 - ALL EXTERIOR WALLS TO BE 4" w/ OSB OR 3 1/2" w/ T-PLY, ALL INTERIOR WALLS TO BE 3 1/2", UNLESS OTHERWISE NOTED.
 - HATCHED AREAS INDICATE DROPPED CEILING. ALL DROPPED CEILING ARE 12" UNLESS OTHERWISE NOTED.
 - SEE "BRACED WALL PANEL DETAIL SHEET" FOR SPECIAL WALL FRAMING LOCATIONS AND HEADER SIZES, IF APPLICABLE.
 - SEE STANDARD DETAIL CATEGORY "1T" SHEET(S) FOR INTERIOR TRIM DETAILS.
 - SEE ARCHITECTURAL DETAIL SHEET "AD" FOR HOUSE SPECIFIC INTERIOR TRIM OPTION TABLE.
 - ALL WINDOWS HAVE 7'-0 1/2" HEADER HEIGHT UNLESS OTHERWISE NOTED.
 - ALL HEADERS IN NON-BEARING WALLS SHALL BE A SINGLE FLAT 2x4 OR 2x6 ATTACHED TO CRIPPLES ABOVE, UNLESS OTHERWISE NOTED.



SECOND FLOOR PLAN
SCALE: 1/4" = 1'-0"

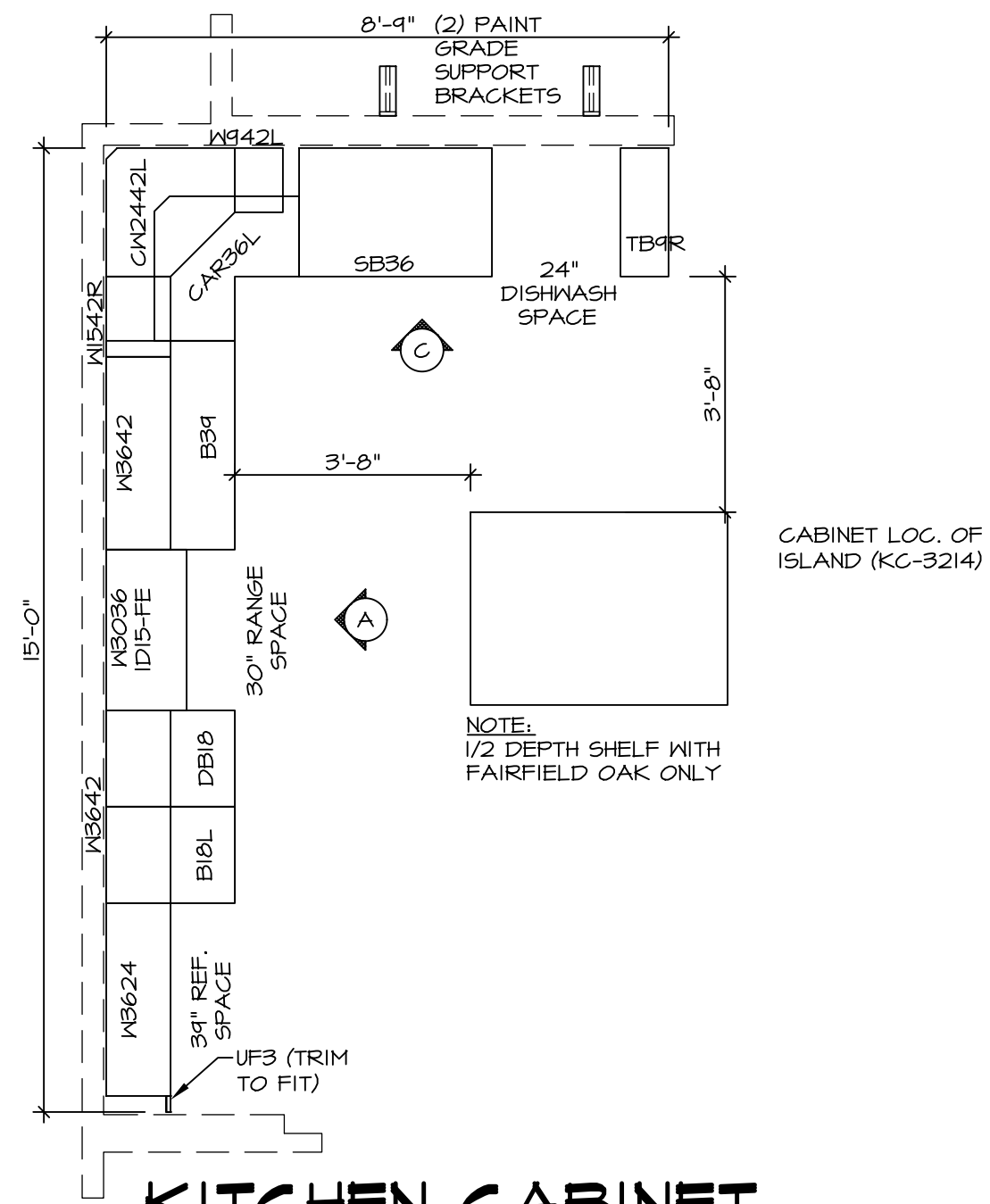
| REV. NO. | DATE | REMARKS |
|----------|----------|--------------------------------|
| 1 | 08/04/16 | TH - DRAWING ALIGNMENT |
| 2 | 07/27/17 | SLS - T-PLY CONVERSION PROJECT |

NVR, Inc., owner, expressly reserves its copyright in these plans. These plans are not to be reproduced, changed, adapted in any way, or used for any other project without the written consent of NVR, Inc.

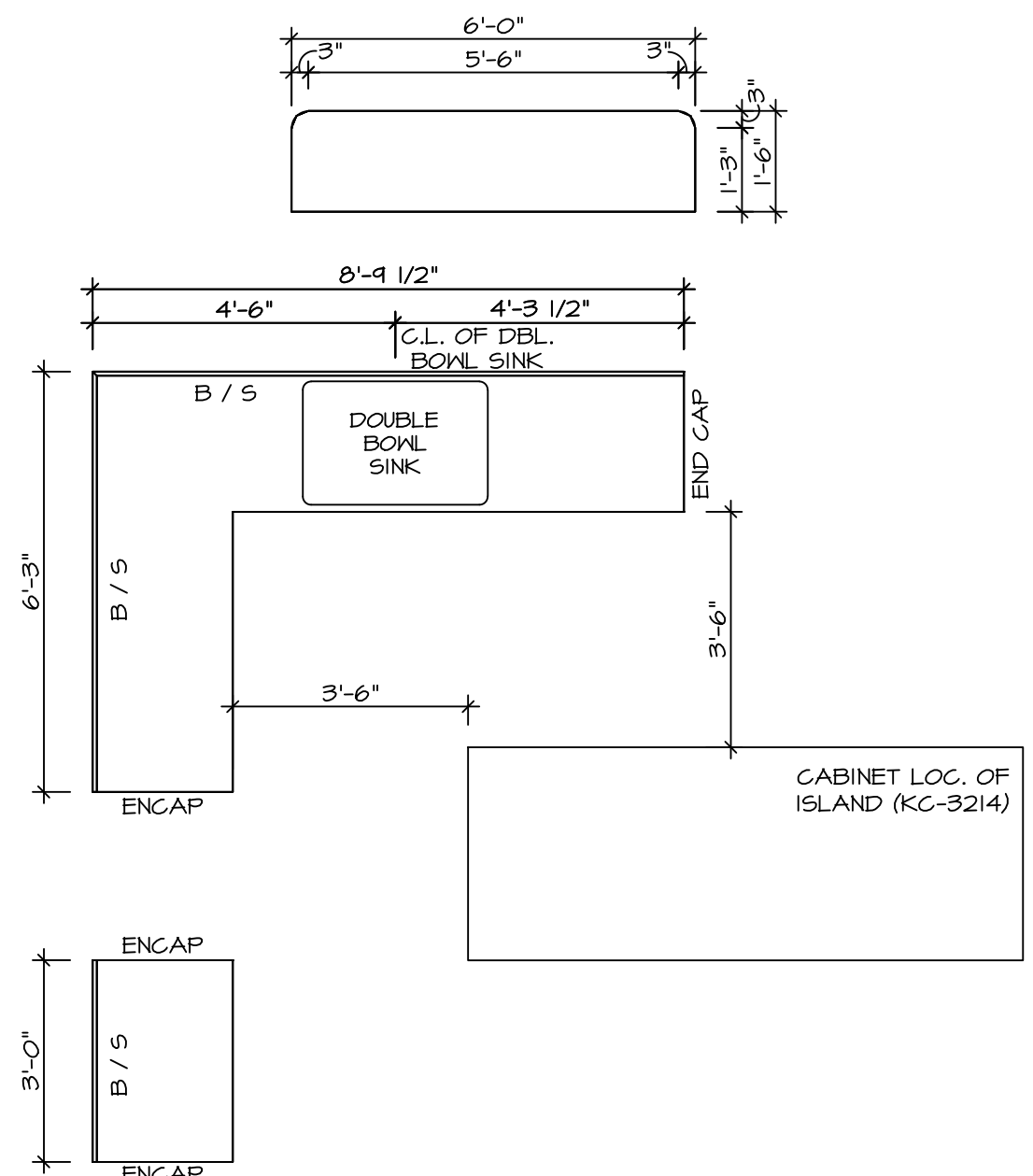


| SHEET NO. | MODEL | SET NO. | VERSION | DRAWN BY | DATE: | OPTION |
|-----------|---------|---------|---------|----------|-------|--------|
| A-8 | PALERMO | 03 | 03 | FALOO | | |
| 60 | | | | | | |

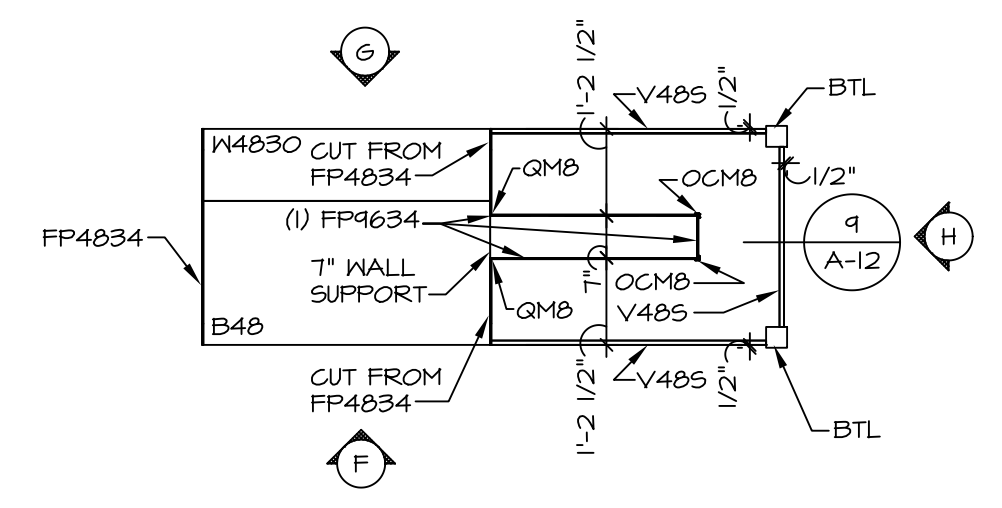
DRAWING TITLE: SECOND FLOOR PLAN
OPTION DESCRIPTION:



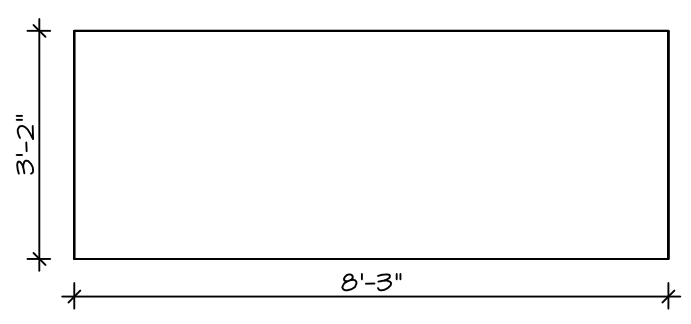
KITCHEN CABINET PLAN-KC-2862
 SCALE: 3/8" = 1'-0" STANDARD KITCHEN MORNING ROOM



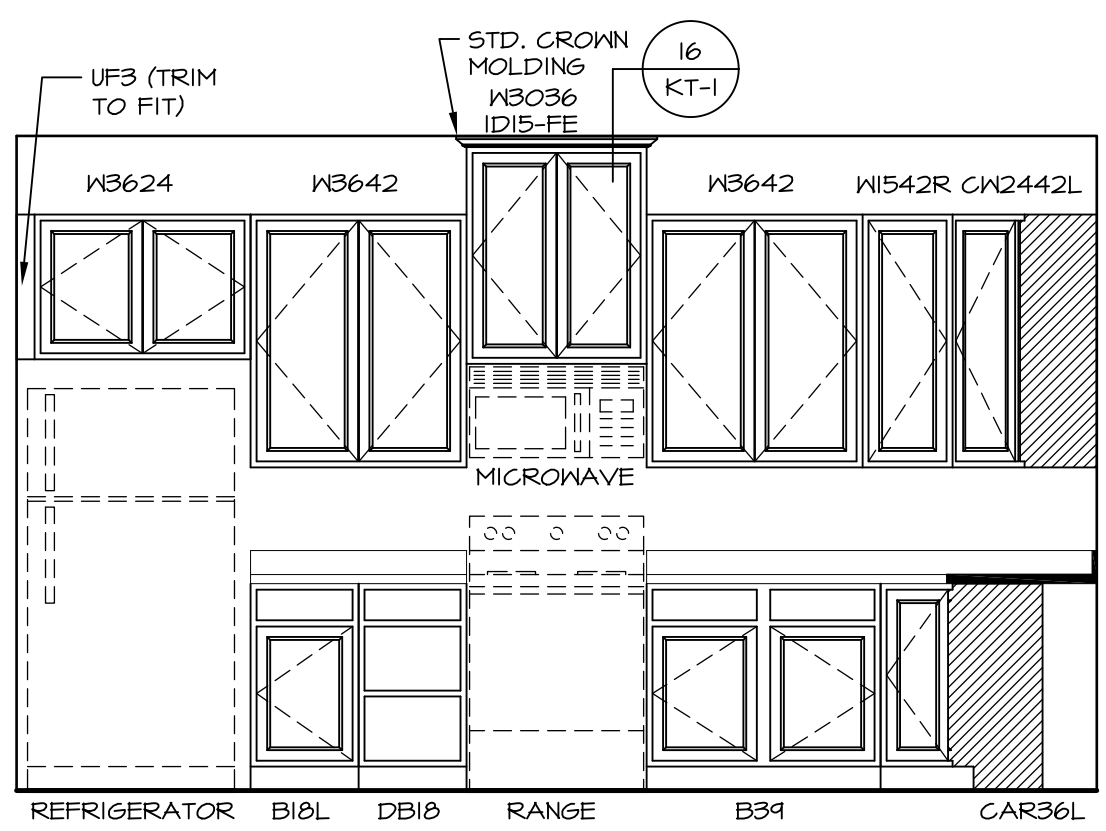
KITCHEN COUNTERTOP PLAN-KT-2862
 SCALE: 3/8" = 1'-0" STANDARD KITCHEN MORNING ROOM



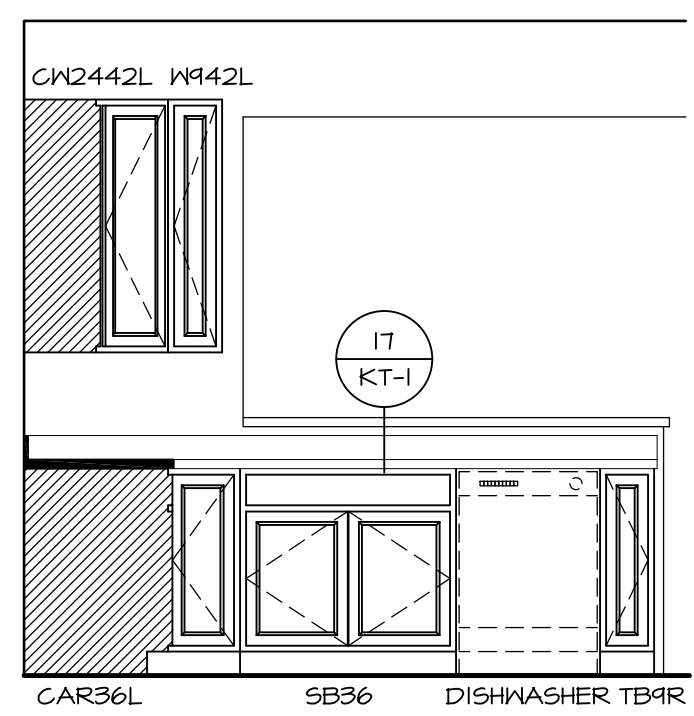
KITCHEN CABINET PLAN-KC-3214
 SCALE: 3/8" = 1'-0" GOURMET ISLAND



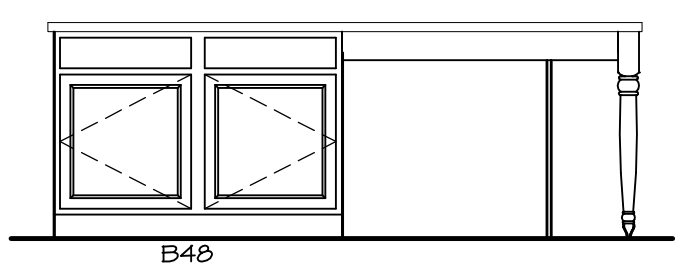
KITCHEN COUNTERTOP PLAN-KT-3214
 SCALE: 3/8" = 1'-0" GOURMET ISLAND



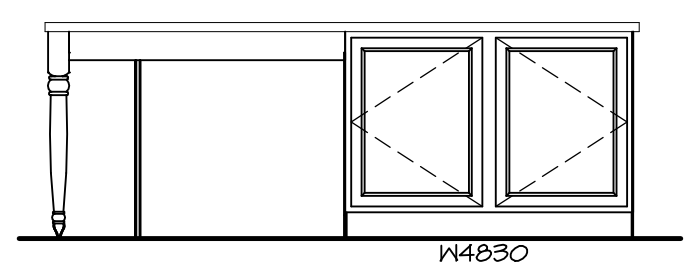
A KITCHEN ELEVATION
 SCALE: 3/8" = 1'-0"



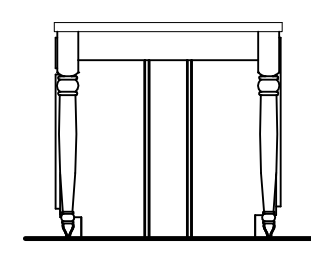
C KITCHEN ELEVATION
 SCALE: 3/8" = 1'-0"



F KITCHEN ELEVATION
 SCALE: 3/8" = 1'-0"



G KITCHEN ELEVATION
 SCALE: 3/8" = 1'-0"

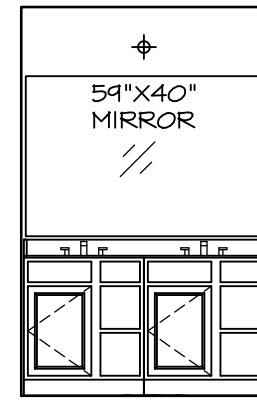


H KITCHEN ELEVATION
 SCALE: 3/8" = 1'-0"

| | | | |
|--------------------------|-------------------------|------------------|---------------|
| SHEET NO. A-12 | MODEL PALERMO | SET NO. PALOO | VERSION 03 |
| | DRAWING TITLE | DRAWN BY | DATE: |
| 70 | OPTION DESCRIPTION | OPTION | |
| | | | |

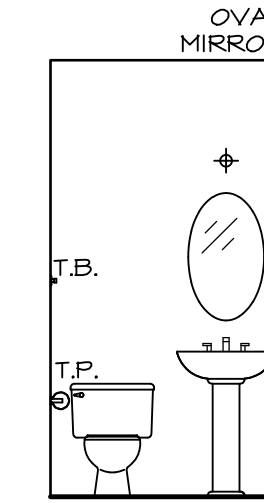
NVR, Inc., owner, expressly reserves its common law copyright in these architectural plans. These plans are not to be reproduced, changed, adapted, or otherwise used in any way without the prior written consent of NVR, Inc.

NVR
 NVR, Inc.
 Architectural Services
 Architects & Engineers
 5285 Westover Hills
 Frederick, MD 21703



(2) V5DB3034H

J **OWNER'S BATH**
SCALE: 1/4" = 1'-0"



B **POWDER ROOM**
SCALE: 1/4" = 1'-0"

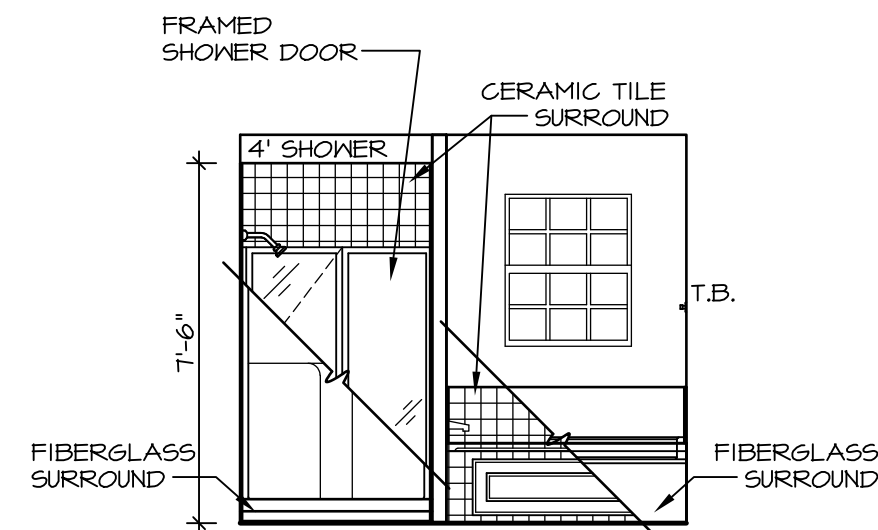


H **OWNER'S BATH**
SCALE: 1/4" = 1'-0"

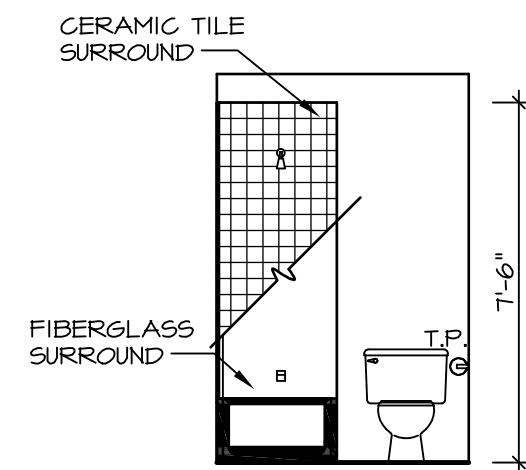


V5DB30

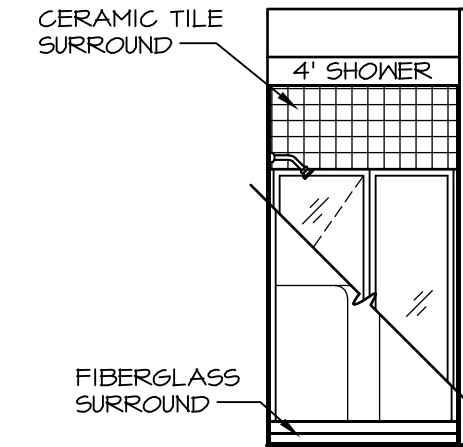
E **BATH #1**
SCALE: 1/4" = 1'-0"



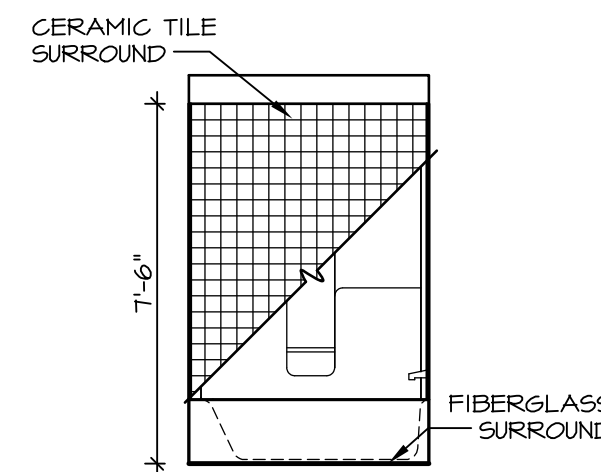
L **OWNER'S BATH**
SCALE: 1/4" = 1'-0"



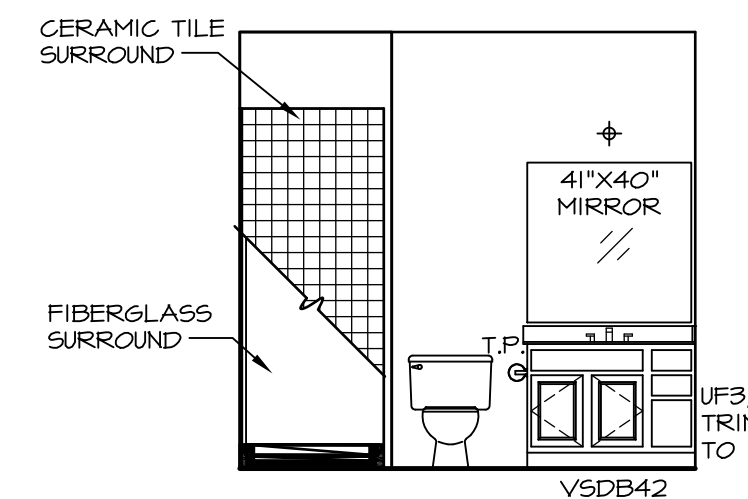
G **BATH #1**
SCALE: 1/4" = 1'-0"



D **FIRST FLOOR BATH**
SCALE: 1/4" = 1'-0"



F **BATH #1**
SCALE: 1/4" = 1'-0"



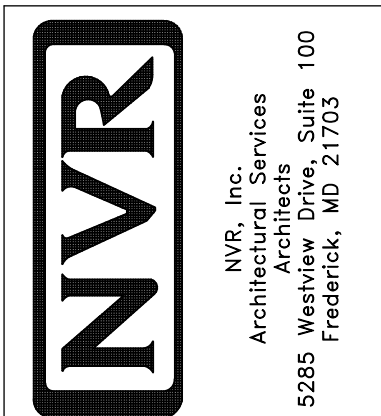
C **FIRST FLOOR BATH**
SCALE: 1/4" = 1'-0"

NOTES:

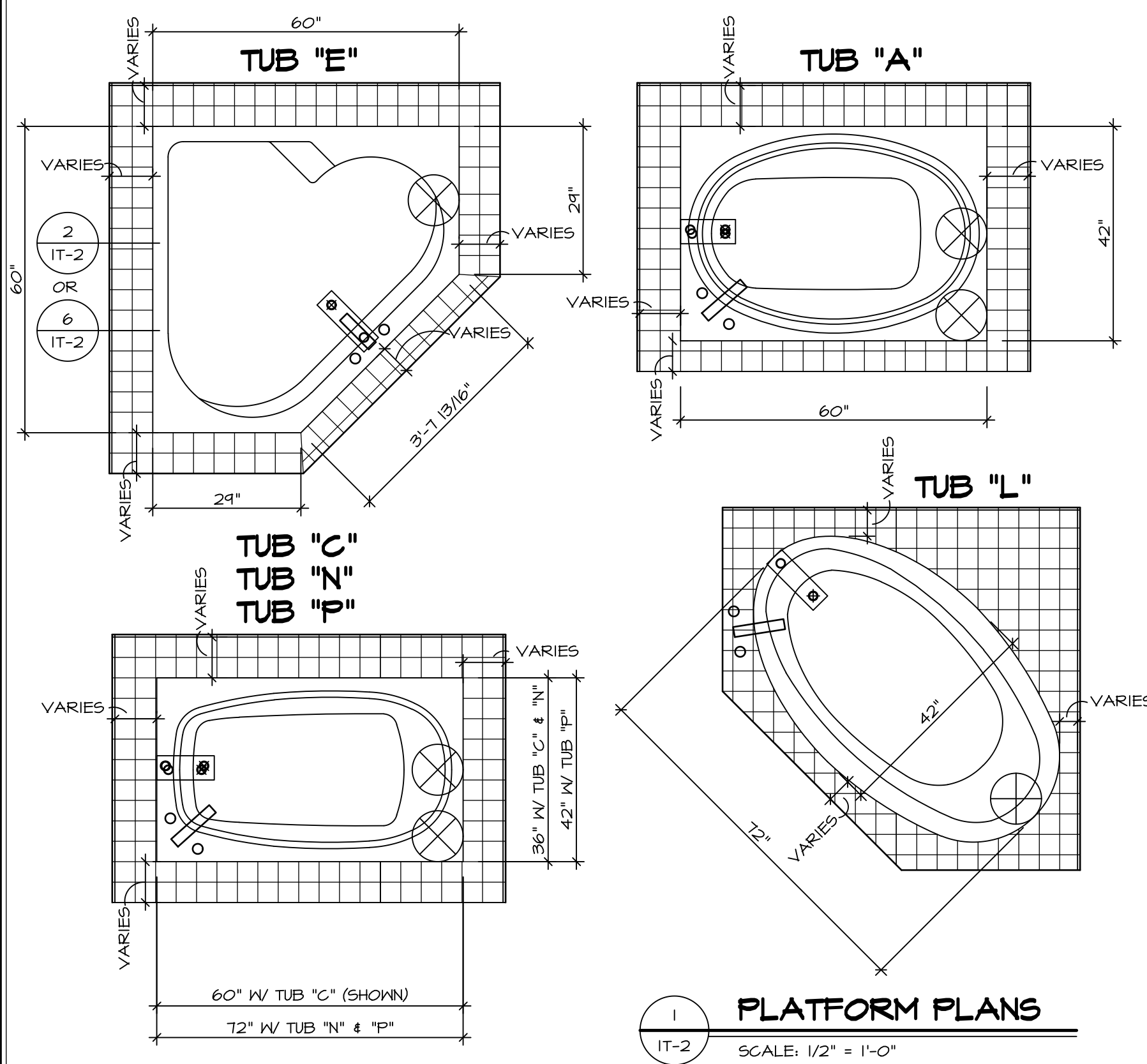
1. TEMPERED GLASS SHOWER ENCLOSURE WITH SWING DOOR OR OPTIONAL SLIDING DOOR BY DIVISION
2. TUB ACCESS PANELS PROVIDED AS NEEDED, ALL MATERIALS BY DIVISION
3. REFER TO SHEET IT-2 FOR TUB AND SHOWER DETAILS.
4. ALL V5DB24-42 DRAWERS TO BE SET ON RIGHT HAND.
5. BATH ELEVATIONS ARE SHOWN PER PLAN.

| REV. NO. | DATE | REMARKS |
|----------|----------|------------------------|
| 1 | 08/04/16 | TM - DRAWING ALIGNMENT |

NVR, Inc., owner, expressly reserves its copyright in these plans. These plans are not to be reproduced, changed, copied in any way, or used for any purpose not intended by NVR, Inc. without the written consent of NVR, Inc.

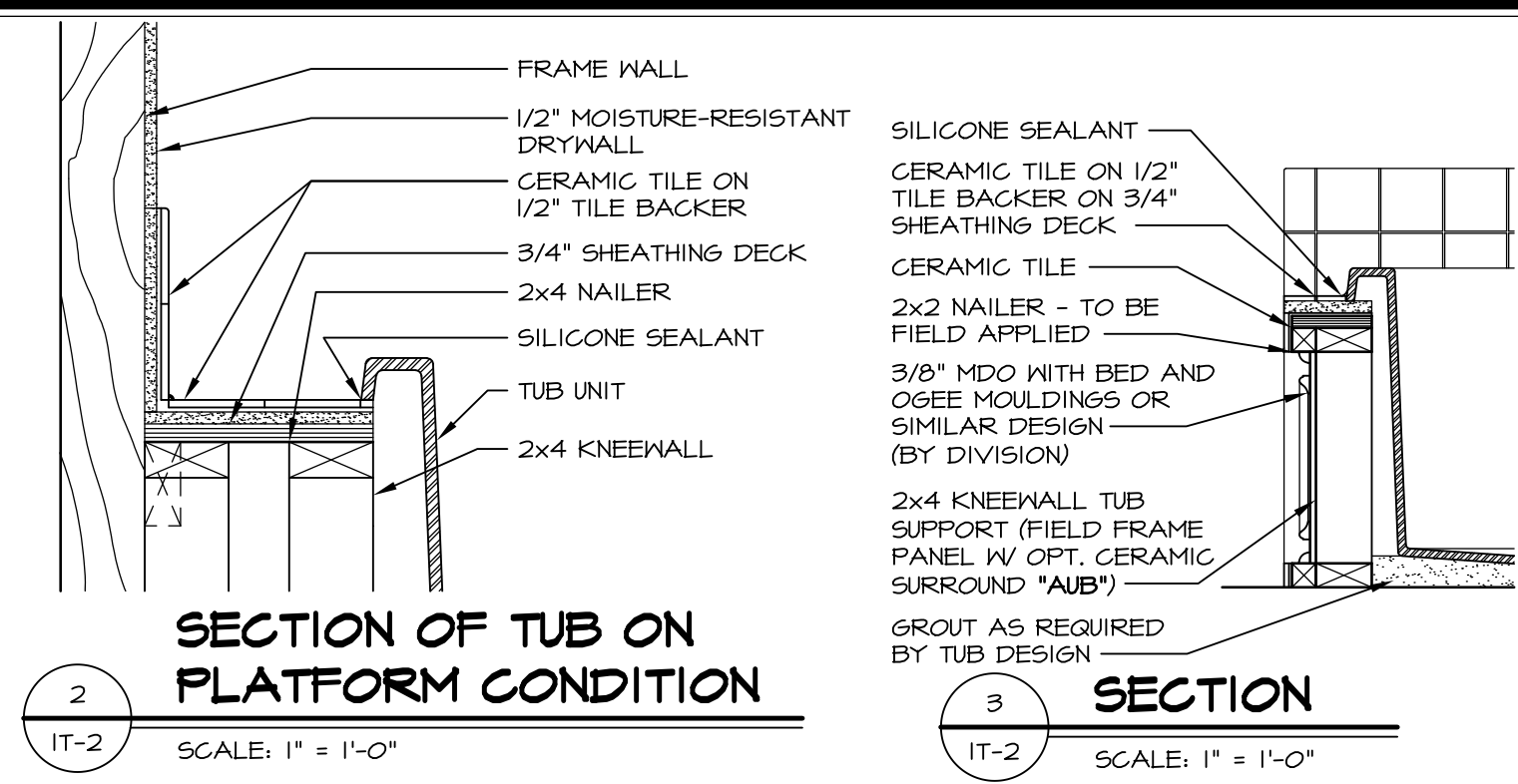


| | | |
|-----------------------|--------------------|------------|
| MODEL | SET NO. PALOO | VERSION 03 |
| DRAWING TITLE | DRAWN BY | DATE: |
| BATH ELEVATIONS | OPTION | OPTION |
| SHEET NO. A-13 | OPTION DESCRIPTION | |
| 72 | | |

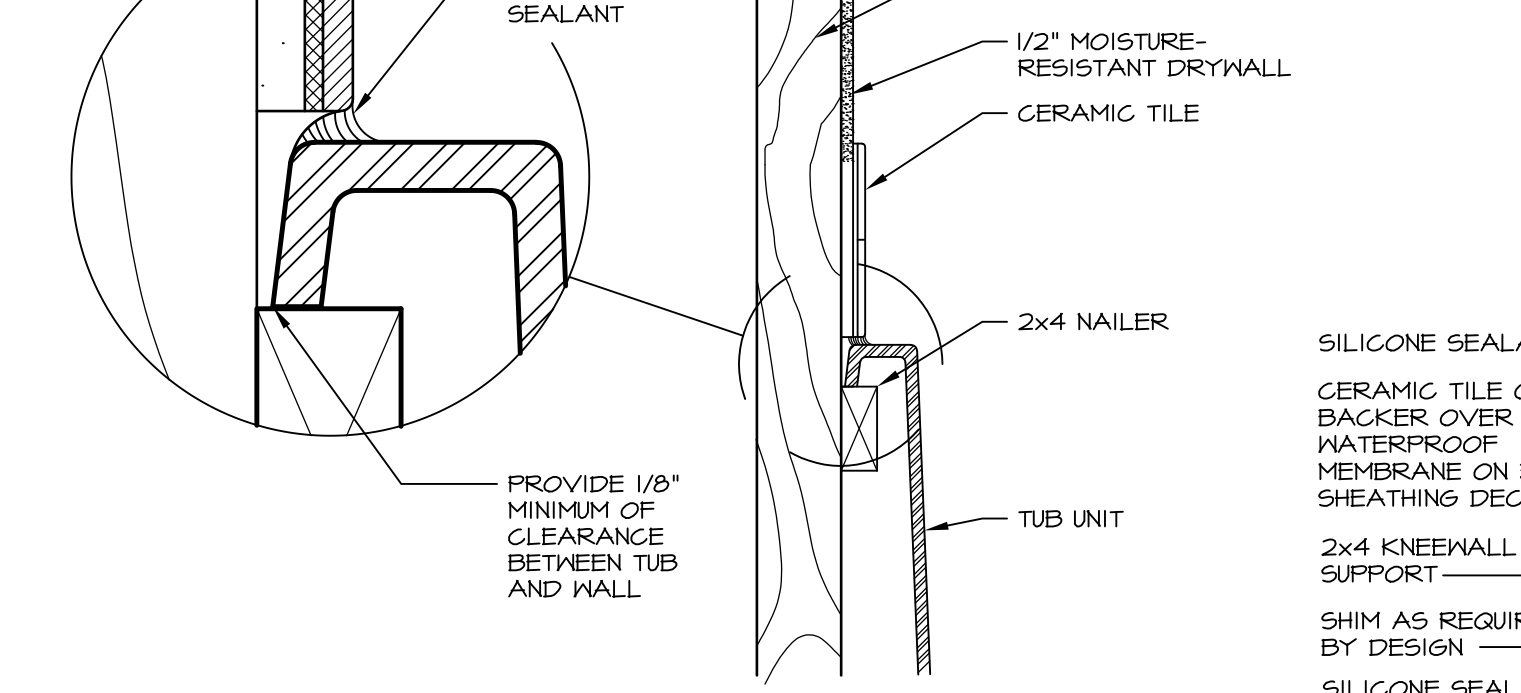


1 PLATFORM PLANS
SCALE: 1/2" = 1'-0"

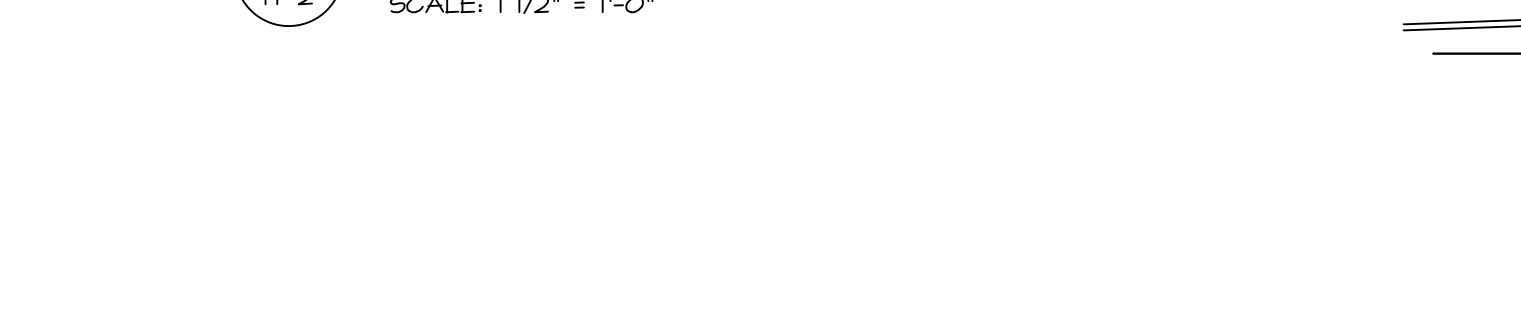
| TUB | MANUF. | HEIGHT | WIDTH | LENGTH | TUB DECK PANEL HEIGHT |
|-----|------------------|---------|-------|--------|-----------------------|
| "A" | KOHLER/ STERLING | 18 3/4" | 42" | 60" | 17 1/8" |
| "C" | KOHLER/ STERLING | 18 3/4" | 36" | 60" | 17 1/8" |
| "E" | KOHLER/ STERLING | 19 1/2" | 60" | 60" | 17 7/8" |
| "L" | KOHLER/ STERLING | 18 1/2" | 42" | 72" | 16 7/8" |
| "N" | KOHLER/ STERLING | 18 3/4" | 36" | 72" | 17 1/8" |
| "P" | KOHLER/ STERLING | 18 3/4" | 42" | 72" | 17 1/8" |



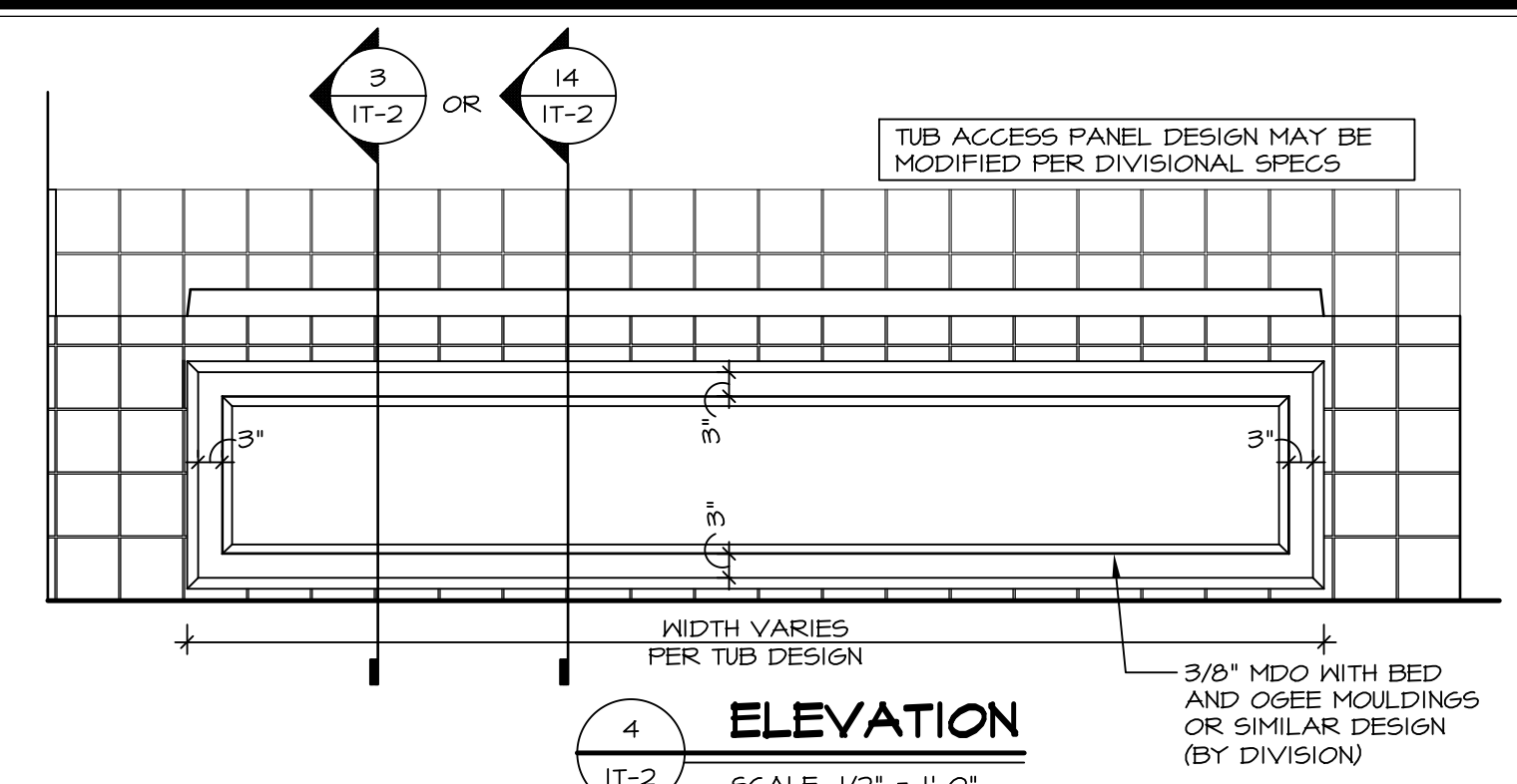
2 SECTION OF TUB ON PLATFORM CONDITION
SCALE: 1" = 1'-0"



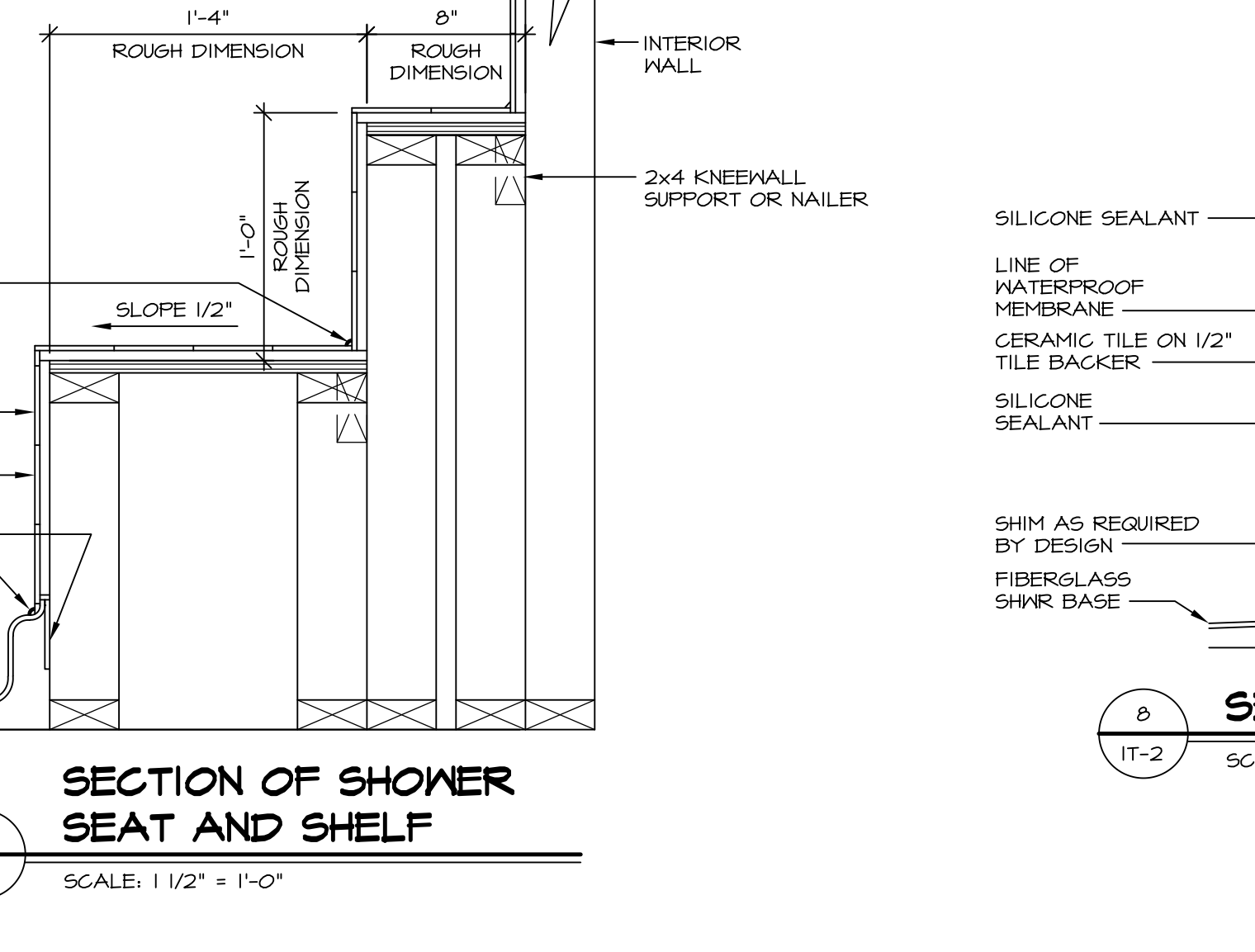
3 SECTION
SCALE: 1" = 1'-0"



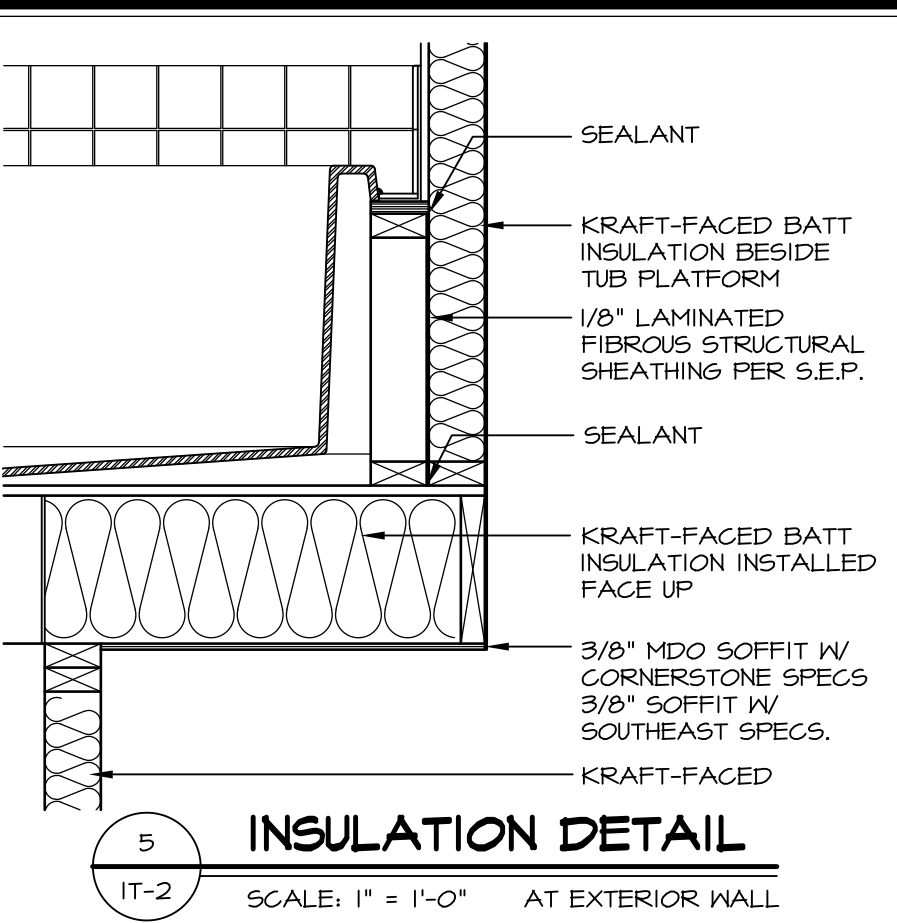
6 SECTION OF TUB TO WALL CONDITION
SCALE: 1 1/2" = 1'-0"



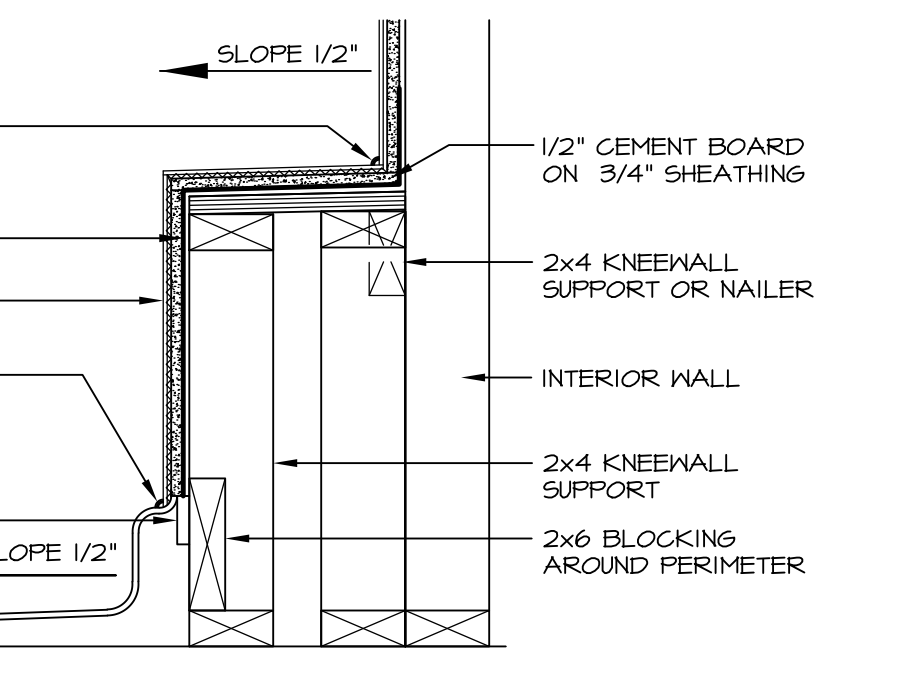
4 ELEVATION
SCALE: 1/2" = 1'-0"



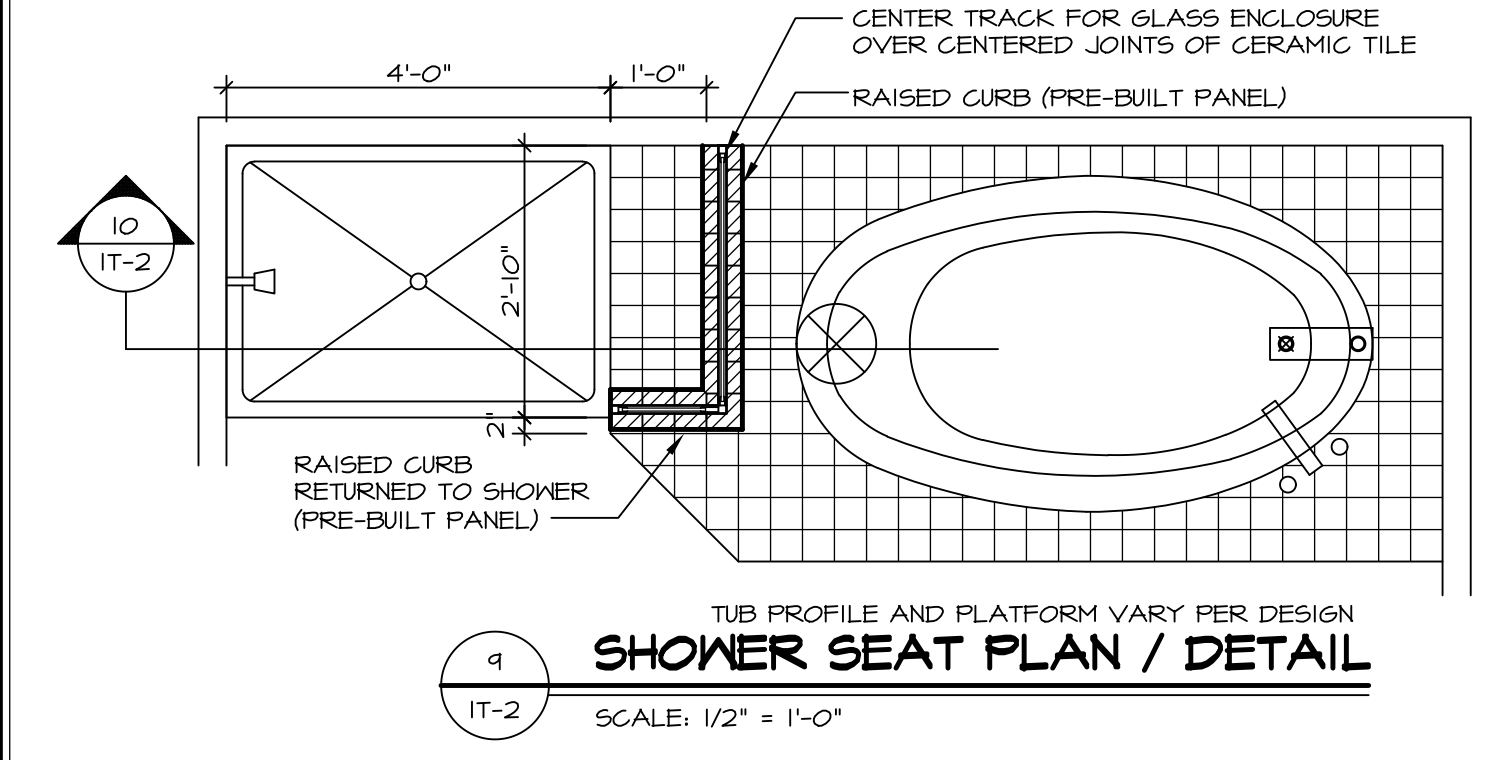
7 SECTION OF SHOWER SEAT AND SHELF
SCALE: 1 1/2" = 1'-0"



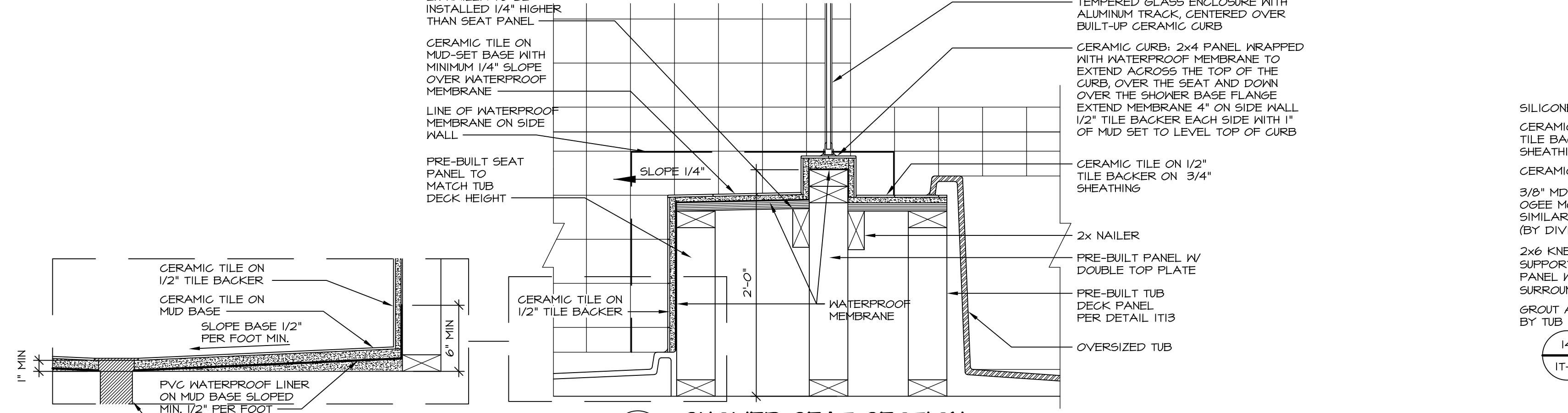
5 INSULATION DETAIL
SCALE: 1" = 1'-0" AT EXTERIOR WALL



8 SECTION OF SHOWER SEAT
SCALE: 1-1/2" = 1'-0" FIBERGLASS SHOWER BASE



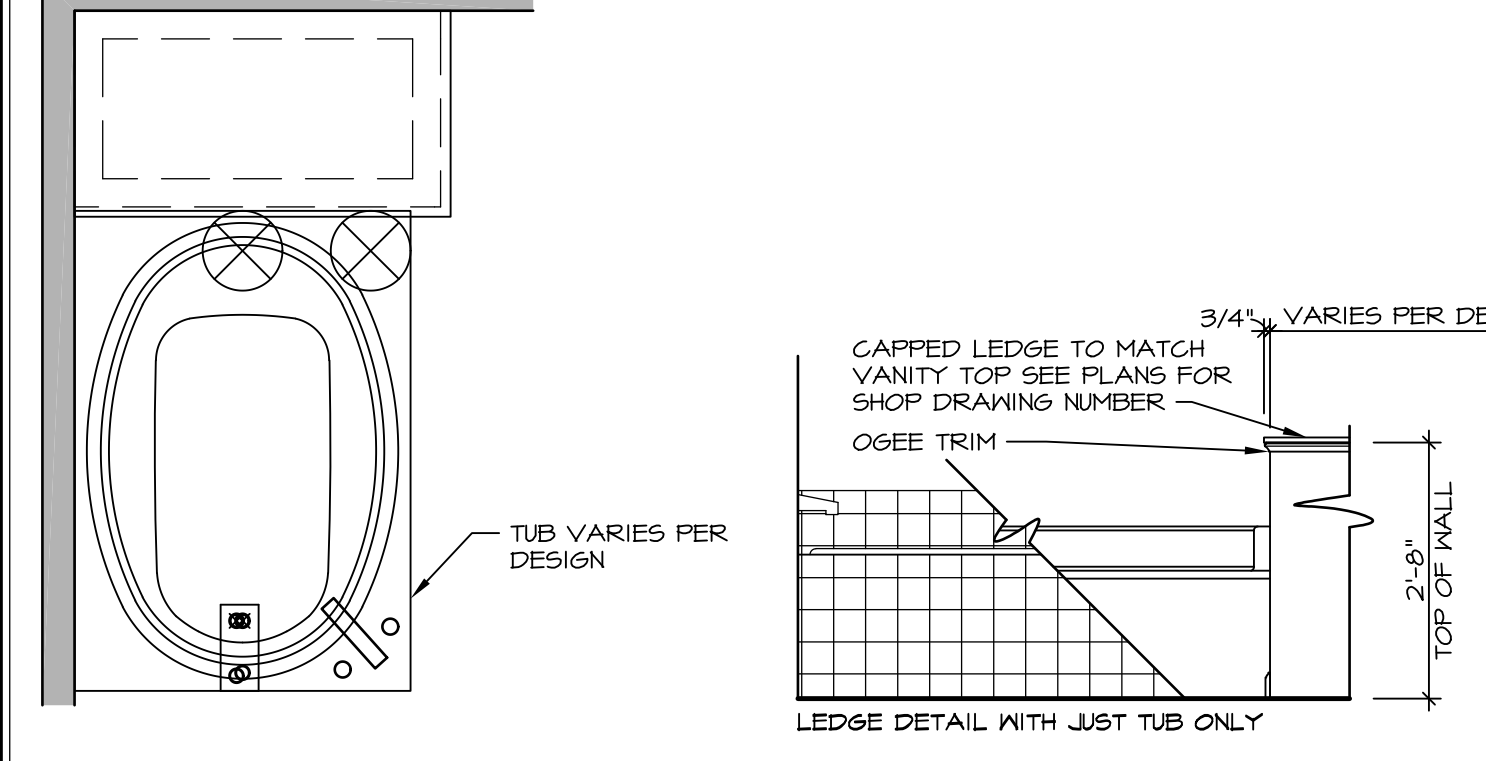
9 SHOWER SEAT PLAN / DETAIL
SCALE: 1/2" = 1'-0"



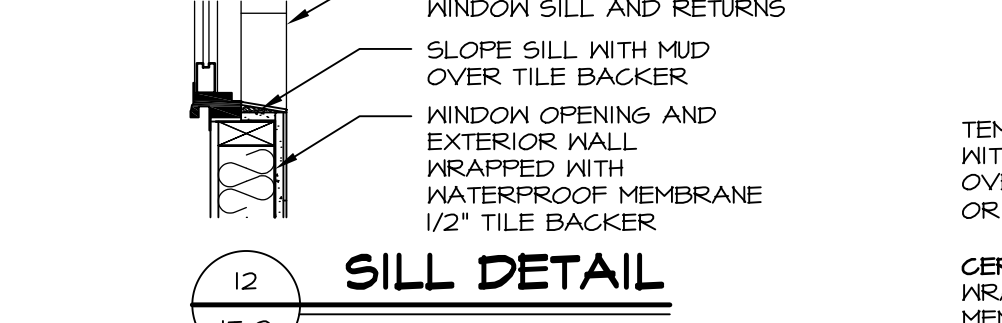
10 SHOWER SEAT SECTION
SCALE: 1-1/2" = 1'-0"



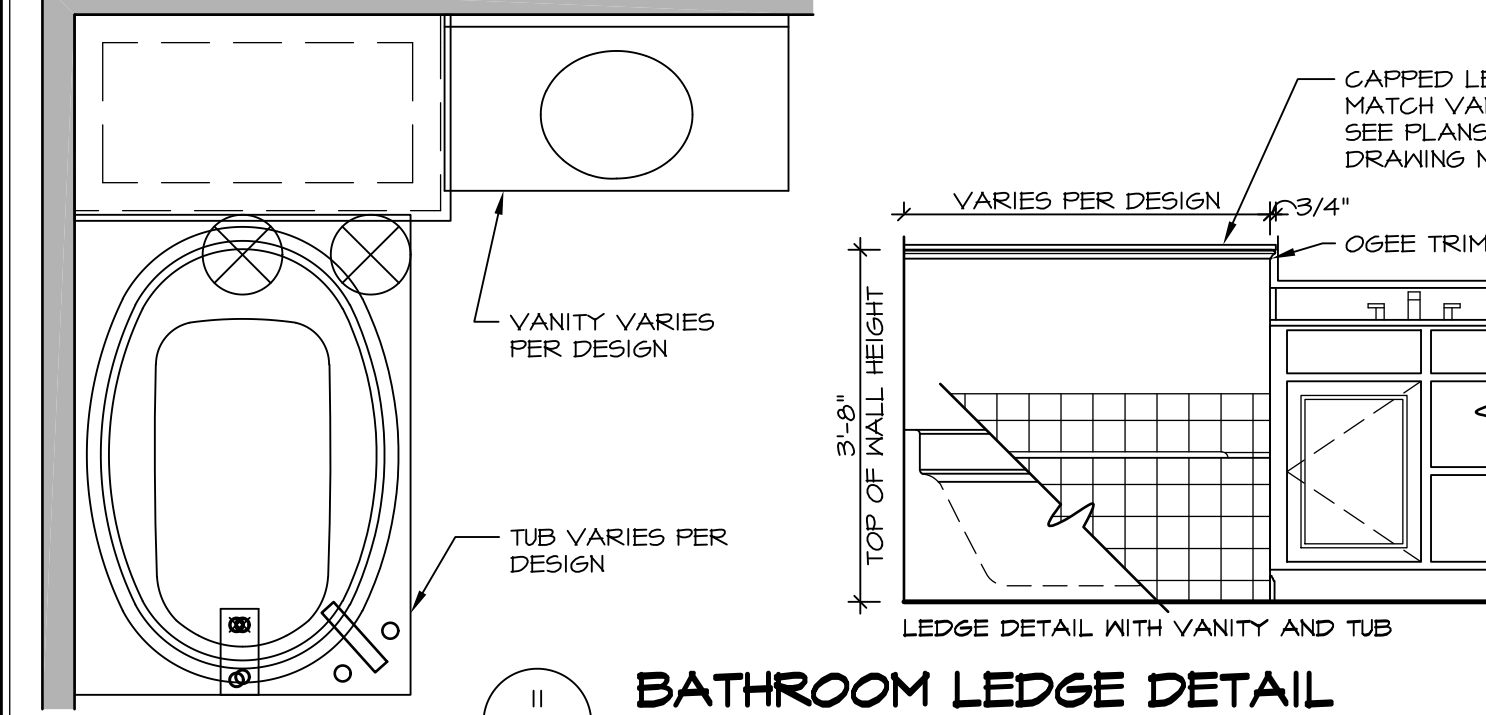
11 ALTERNATE SHOWER PAN DETAIL



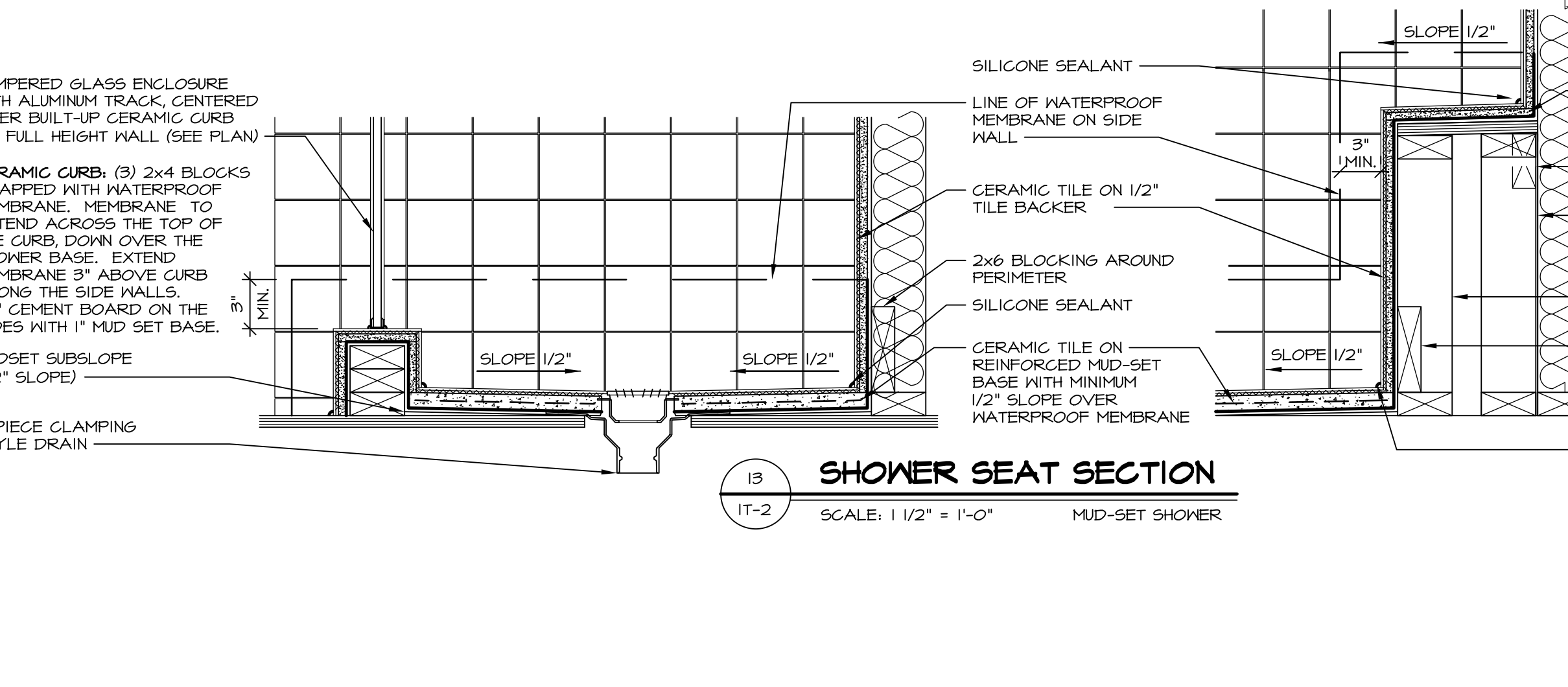
12 BATHROOM LEDGE DETAIL
SCALE: 1/2" = 1'-0"



12 SILL DETAIL
SCALE: 1" = 1'-0"



11 BATHROOM LEDGE DETAIL
SCALE: 1/2" = 1'-0"



13 SHOWER SEAT SECTION
SCALE: 1 1/2" = 1'-0" MUD-SET SHOWER

REVISIONS

| REV. NO. | DATE | DESCRIPTION |
|----------|--------|---|
| 1 | 5/1/17 | EBP - REVISED DETAIL 1 AND 11 TO REMOVE TUB ACCESS PANEL REF. (095 #15 541/4) |
| 2 | 9/2/17 | EBP - REVISED T-FLY NOTE TO CALL OUT LFS |
| 3 | 9/2/17 | EBP - REVISED NOTE ON DETAIL #1 - REVISED ORDER OF MATERIAL PARA#493/4 |

NVR, Inc., owner, expressly reserves its common law copyright and other property rights in these plans. These plans are not to be reproduced, copied, or otherwise used in any way without the prior written consent of NVR, Inc.

NVR
NVR, Inc.
Architectural Services
5285 Westpark Drive
Frederick, MD 21703

SET NO. NVR
VERSION
DRAWN BY
DATE:
OPTION

MODEL
STANDARD DETAILS
DRAWING TITLE
INTERIOR TRIM DETAILS
BATH DETAILS
OPTION DESCRIPTION

SHEET NO.
IT-2

J:\Dwg\NVR\Interior Trim\IT2.dwg 09/27/17 - 9:20 am