

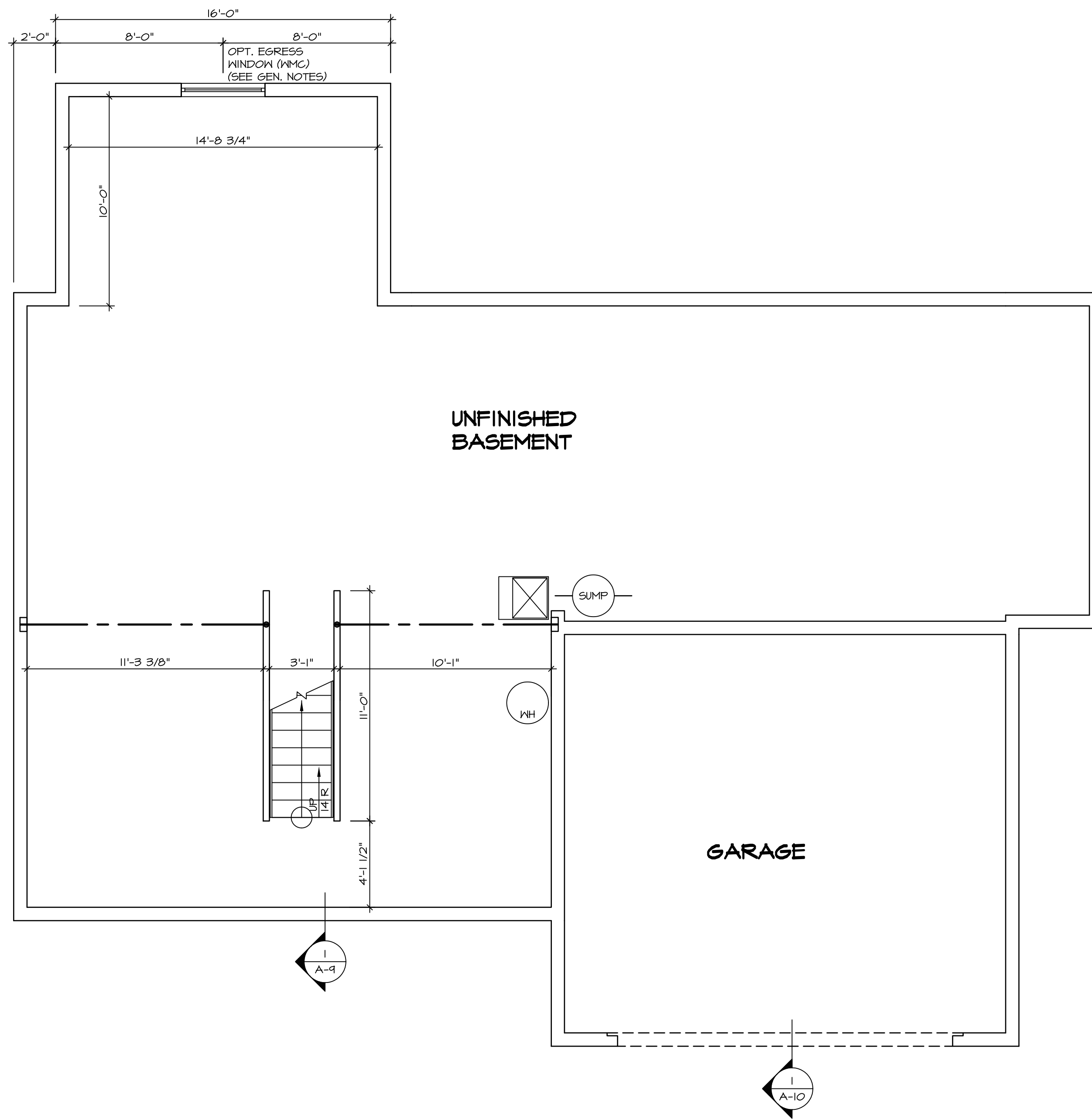
1 PLUMBING PLAN
A-5 SCALE: 1/4" = 1'-0"

SHEET NO. A-5	MODEL PALERMO	SET NO. PALOO
OPTION DESCRIPTION 4B	VERSION 03	DRAWN BY DATE:
	DRAWING TITLE PLUMBING PLAN	OPTION OPTION

NVR
NVR, Inc.
Architectural Services
5285 Westpark Drive, Suite 100
Frederick, MD 21703

NVR, Inc., owner, expressly reserves its copyright in these plans. These plans are not to be reproduced, changed, adapted, or otherwise used in any way without the written consent of NVR, Inc.

REV. NO.	DATE	REMARKS



LEGEND

	BEARING WALL
	NON BEARING WALL
	INDICATES BEARING FROM POINT-LOAD ABOVE
	JACKS
	BEAM/HEADER
	PAD FOOTING
	STEEL COLUMN
	PORTAL FRAME
	JOIST/TRUSS
	LVL
	ENGINEERING PAGE NUMBER

SEE FC DETAILS FOR FRAMING CONNECTORS

- FLOOR PLAN NOTES**
1. ALL HEADERS ARE (2) 2x6 w/ 2x4 WALLS OR (3) 2x6 w/ 2x6 WALLS, UNLESS OTHERWISE NOTED.
 2. ALL HEADERS TO HAVE (1) 2x4 OR 2x6 JACK EACH END, UNLESS OTHERWISE NOTED.
 3. ALL EXTERIOR WALLS TO BE 4" AND ALL INTERIOR WALLS TO BE 3 1/2", UNLESS OTHERWISE NOTED.
 4. HATCHED AREAS INDICATE DROPPED CEILINGS. ALL DROPPED CEILINGS ARE 12" UNLESS OTHERWISE NOTED.
 5. SEE "BRACED WALL PANEL DETAIL SHEET" FOR SPECIAL WALL FRAMING LOCATIONS AND HEADER SIZES, IF APPLICABLE.
 6. SEE STANDARD DETAIL CATEGORY "IT" SHEET(S) FOR INTERIOR TRIM DETAILS.
 7. SEE ARCHITECTURAL DETAIL SHEET "AD" FOR HOUSE SPECIFIC INTERIOR TRIM OPTION TABLE.
 8. ALL WINDOWS HAVE 7'-0" 1/2" HEADER HEIGHT UNLESS OTHERWISE NOTED.
 9. ALL CASED OPENINGS AT T-11", UNLESS OTHERWISE NOTED.

GYPSUM NOTES

AT GARAGE:
GYPSUM BOARD AT COMMON WALLS, CEILING, BEAM WRAPS AND SUPPORTS PER STANDARD DETAIL FA-1(b) FIRE ASSEMBLIES OR AS REQUIRED BY LOCAL CODE.

AT STAIRS:
1/2" GYPSUM BOARD AT UNDERSIDE OF STAIRS AND WALLS IN CLOSET

BASEMENT FLOOR PLAN
SCALE: 1/4" = 1'-0"

SHEET NO. A-6	MODEL PALERMO	SET NO. PAL00	REVISIONS	REMARKS
	DRAWING TITLE BASEMENT FLOOR PLAN	VERSION 03	DATE	
OPTION DESCRIPTION 51	DRAWN BY	DATE		
	OPTION			

NVR, Inc. Architectural Services
 5285 Washington Blvd, Suite 100
 Frederick, MD 21703
 07/20/17 - 4:17 pm

NVR, Inc., owner, expressly reserves its common law copyright in these plans. These plans are not to be reproduced, changed, adapted in any way, or otherwise used, without the prior written consent of NVR, Inc.

FIRST FLOOR JACK SCHEDULE				
IDENTIFIER	DESCRIPTION	OPTIONS	ENG. NUM.	REMARKS
J106	JACK - (2) 2X4 SFF STUD GRADE		1012	
J107	JACK - (2) 2X4 SFF STUD GRADE		1012	
J108	JACK - (2) 2X4 SFF STUD GRADE		1012	
J109	JACK - (3) 2X4 SFF STUD GRADE	6CB	1046	
J110	JACK - (3) 2X4 SFF STUD GRADE	6CB	1046	
J114	JACK - (2) 2X4 SFF STUD GRADE	EDOMAP	1075, 1078	
J120	JACK - (4) 2X6 SFF STUD GRADE	MAA	1014	
J121	JACK - (3) 2X6 SFF STUD GRADE	MAA	1014	FIELD INSTALLED
J122	JACK - (3) 2X4 SFF STUD GRADE	SRN	1040	
J130	JACK - (2) 2X4 SFF STUD GRADE	ELL	1024	
J131	JACK - (2) 2X4 SFF STUD GRADE	ELL	1004	
J132	JACK - (2) 2X4 SFF STUD GRADE	ELL	1024	
J133	JACK - (2) 2X4 SFF STUD GRADE	6CBMAV	1044, 1131	CRIPPLES
J134	JACK - (2) 2X4 SFF STUD GRADE	6CBMAV	1044, 1131	CRIPPLES
J167	JACK - (2) 2X4 SFF STUD GRADE	L66	1082	
J168	JACK - (2) 2X4 SFF STUD GRADE	L66	1082	

LVL PLY TO PLY FASTENING SCHEDULE:

1A - (2) FLY UP TO AND INCLUDING 11 7/8" TALL; FASTEN FLIES W/ (2) ROWS 16D NAILS AT 12" O.C.
 2A - (2) FLY 14" TO AND INCLUDING 18" TALL (INCLUSIVE); FASTEN FLIES W/ (3) ROWS 16D NAILS AT 12" O.C.
 3A - (2) FLY 20" TALL AND OVER; FASTEN FLIES W/ (4) ROWS 16D NAILS AT 12" O.C.
 4A - (3) FLY UP TO AND INCLUDING 11 7/8" TALL; FASTEN FLIES W/ (2) ROWS 16D NAILS AT 12" O.C. FROM EACH SIDE
 5A - (3) FLY 14" TO AND INCLUDING 18" TALL (INCLUSIVE); FASTEN FLIES W/ (3) ROWS 16D NAILS AT 12" O.C. FROM EACH SIDE
 6A - (3) FLY 20" TALL AND OVER; FASTEN FLIES W/ (4) ROWS 16D NAILS AT 12" O.C. FROM EACH SIDE

FIRST FLOOR BEAM/HEADER SCHEDULE					
IDENTIFIER	DESCRIPTION	LENGTH	OPTIONS	ENG. NUM.	REMARKS
B101-3	LVL - 16	14'-4 1/2"	MAA	1014	5A, FIELD INSTALL
B102	BEAM STEEL - W12X40	22'-3 1/2"	ELA, ELC, ELL, MAV	1057, 1133	
B107-2	LVL - 14	17'-4"	MAV	1050, 1051	2A, FIELD INSTALL

LEGEND	
	BEARING WALL
	NON BEARING WALL
	INDICATES BEARING FROM POINT-LOAD ABOVE
	JACKS
	BEAM/HEADER
	PAD FOOTING
	STEEL COLUMN
	PORTAL FRAME
	JOIST/TRUSS
	LVL
	ENGINEERING PAGE NUMBER

SEE FC DETAILS FOR FRAMING CONNECTORS

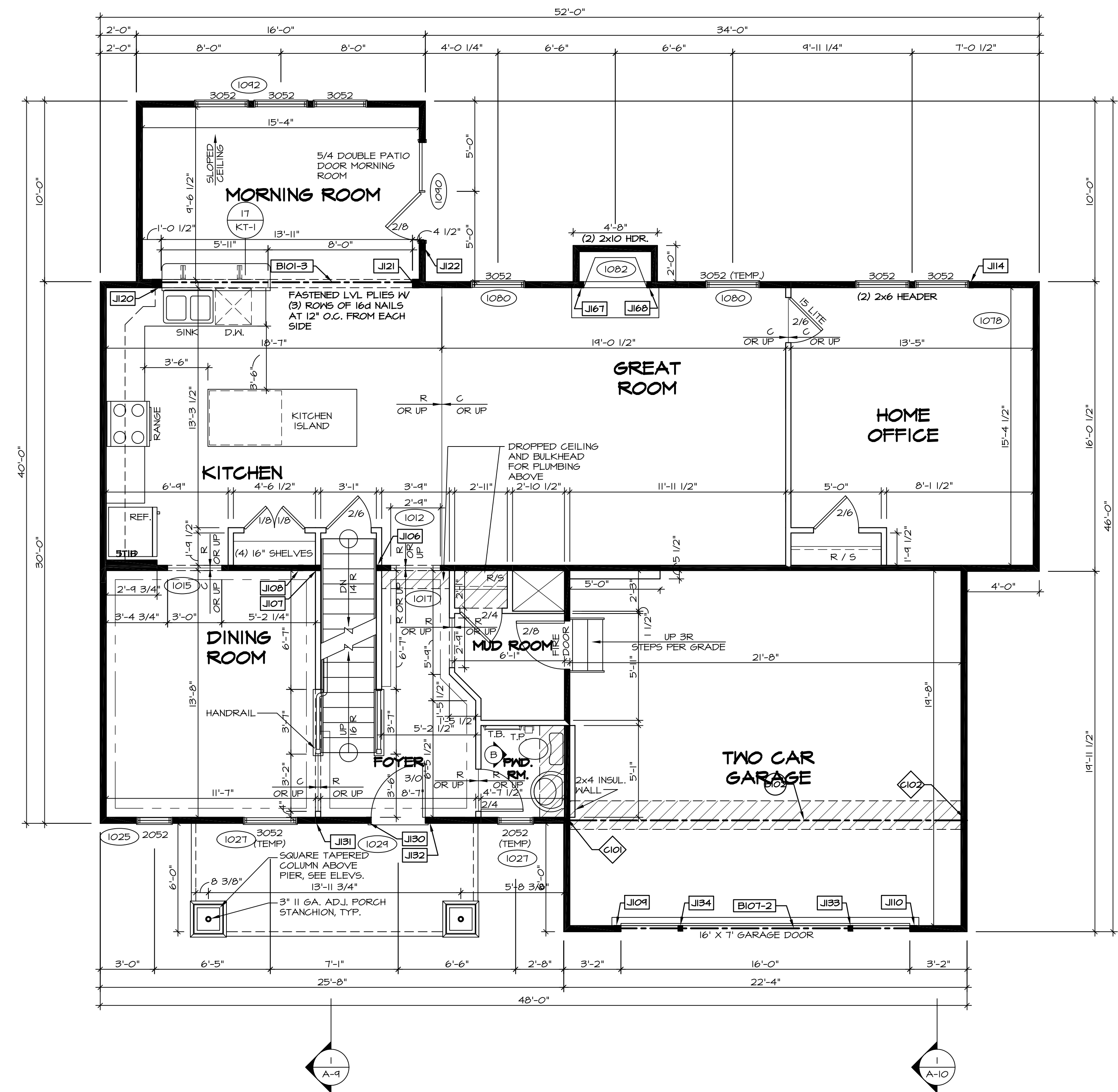
STEEL COLUMN SCHEDULE					
IDENTIFIER	STYLE	HEIGHT	OPTIONS	ENG. NUM.	REMARKS
C101	STANCHION - 3 IN SCHED 40	9'-0 11/16"	FBA	1057, 1133, 1128	
C102	STANCHION - 3 IN SCHED 40	9'-0 11/16"	FBA	1057, 1133, 1128	

FLOOR PLAN NOTES

- ALL HEADERS ARE (2) 2x6 W/ 2x4 WALLS OR (3) 2x6 W/ 2x6 WALLS, UNLESS OTHERWISE NOTED.
- ALL HEADERS TO HAVE (1) 2x4 OR 2x6 JACK EACH END, UNLESS OTHERWISE NOTED.
- ALL EXTERIOR WALLS TO BE 4" AND ALL INTERIOR WALLS TO BE 3 1/2", UNLESS OTHERWISE NOTED.
- HATCHED AREAS INDICATE DROPPED CEILINGS. ALL DROPPED CEILINGS ARE 12" UNLESS OTHERWISE NOTED.
- SEE "BRACED WALL PANEL DETAIL SHEET" FOR SPECIAL WALL FRAMING LOCATIONS AND HEADER SIZES, IF APPLICABLE.
- SEE STANDARD DETAIL CATEGORY "11" SHEET(S) FOR INTERIOR TRIM DETAILS.
- SEE ARCHITECTURAL DETAIL SHEET "AD" FOR HOUSE SPECIFIC INTERIOR TRIM OPTION TABLE.
- ALL WINDOWS HAVE T-0 1/2" HEADER HEIGHT UNLESS OTHERWISE NOTED.
- ALL CASED OPENINGS AT T-11", UNLESS OTHERWISE NOTED.

GYPSON NOTES

- AT GARAGE:**
 GYPSON BOARD AT COMMON WALLS, CEILING, BEAM WRAPS AND SUPPORTS PER STANDARD DETAIL FA-10) FIRE ASSEMBLIES OR AS REQUIRED BY LOCAL CODE.
- AT STAIRS:**
 1/2" GYPSON BOARD AT UNDERSIDE OF STAIRS AND WALLS IN CLOSET



FIRST FLOOR PLAN
 SCALE: 1/4" = 1'-0"

REV. NO.	DATE	DESCRIPTION	REMARKS
1	09/04/16	TH - DRAWING ALIGNMENT	
2	07/12/17	SLS - T-PLY CONVERSION PROJECT	

NVR, Inc., owner, expressly reserves its copyright in the drawings and plans. These plans are not to be reproduced, changed, copied, or otherwise used in any way without the written consent of NVR, Inc.

NVR
 NVR, Inc.
 Architectural Services
 5285 Westgate Drive
 Frederick, MD 21703

SET NO. PALOO
 VERSION 03
 DRAWN BY
 DATE:
 OPTION

PALERMO
 DRAWING TITLE
 FIRST FLOOR PLAN

OPTION DESCRIPTION

SHEET NO. **A-7**
 53

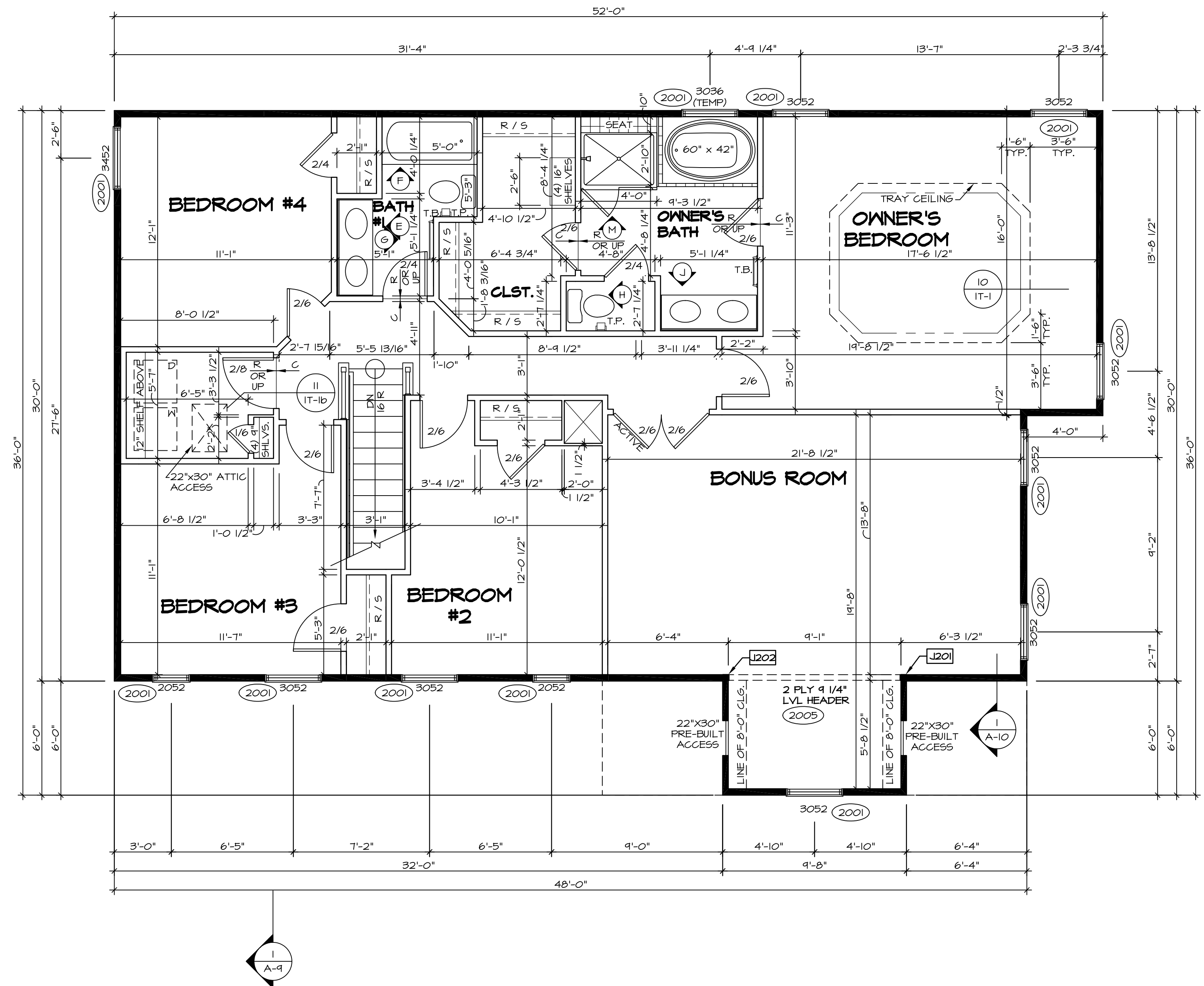
C:\NVR\Solves\PALERMO_PALOO_03\DCI-8X-018X\487500\Sheets\Lot_Spec\16.53 A-7 PLAN_L5.dwg 07/20/17 - 4:17 pm

SECOND FLOOR JACK SCHEDULE				
IDENTIFIER	DESCRIPTION	OPTIONS	ENG. NUM.	REMARKS
J201	JACK - (2) 2X4 SFF STUD GRADE	MAV	2005	
J202	JACK - (2) 2X4 SFF STUD GRADE	MAV	2005	

LEGEND	
	BEARING WALL
	NON BEARING WALL
	INDICATES BEARING FROM POINT-LOAD ABOVE
	JACKS
	BEAM/HEADER
	PAD FOOTING
	STEEL COLUMN
	PORTAL FRAME
	JOIST/TRUSS
	LVL
	ENGINEERING PAGE NUMBER

SEE FC DETAILS FOR FRAMING CONNECTORS

- FLOOR PLAN NOTES**
- ALL HEADERS ARE (2) 2x6 w/ 2x4 WALLS OR (3) 2x6 w/ 2x6 WALLS, UNLESS OTHERWISE NOTED.
 - ALL HEADERS TO HAVE (1) 2x4 OR 2x6 JACK EACH END, UNLESS OTHERWISE NOTED.
 - ALL EXTERIOR WALLS TO BE 4" AND ALL INTERIOR WALLS TO BE 3 1/2", UNLESS OTHERWISE NOTED.
 - HATCHED AREAS INDICATE DROPPED CEILINGS. ALL DROPPED CEILINGS ARE 12" UNLESS OTHERWISE NOTED.
 - SEE "BRACED WALL PANEL DETAIL SHEET" FOR SPECIAL WALL FRAMING LOCATIONS AND HEADER SIZES, IF APPLICABLE.
 - SEE STANDARD DETAIL CATEGORY "IT" SHEET(S) FOR INTERIOR TRIM DETAILS.
 - SEE ARCHITECTURAL DETAIL SHEET "AD" FOR HOUSE SPECIFIC INTERIOR TRIM OPTION TABLE.
 - ALL WINDOWS HAVE T-0 1/2" HEADER HEIGHT UNLESS OTHERWISE NOTED.
 - ALL CASED OPENINGS AT T-11", UNLESS OTHERWISE NOTED.



SECOND FLOOR PLAN
SCALE: 1/4" = 1'-0"

SHEET NO.	MODEL	SET NO.	VERSION	DRAWN BY	DATE:	OPTION	REMARKS
A-8	PALERMO	03	03				
60							

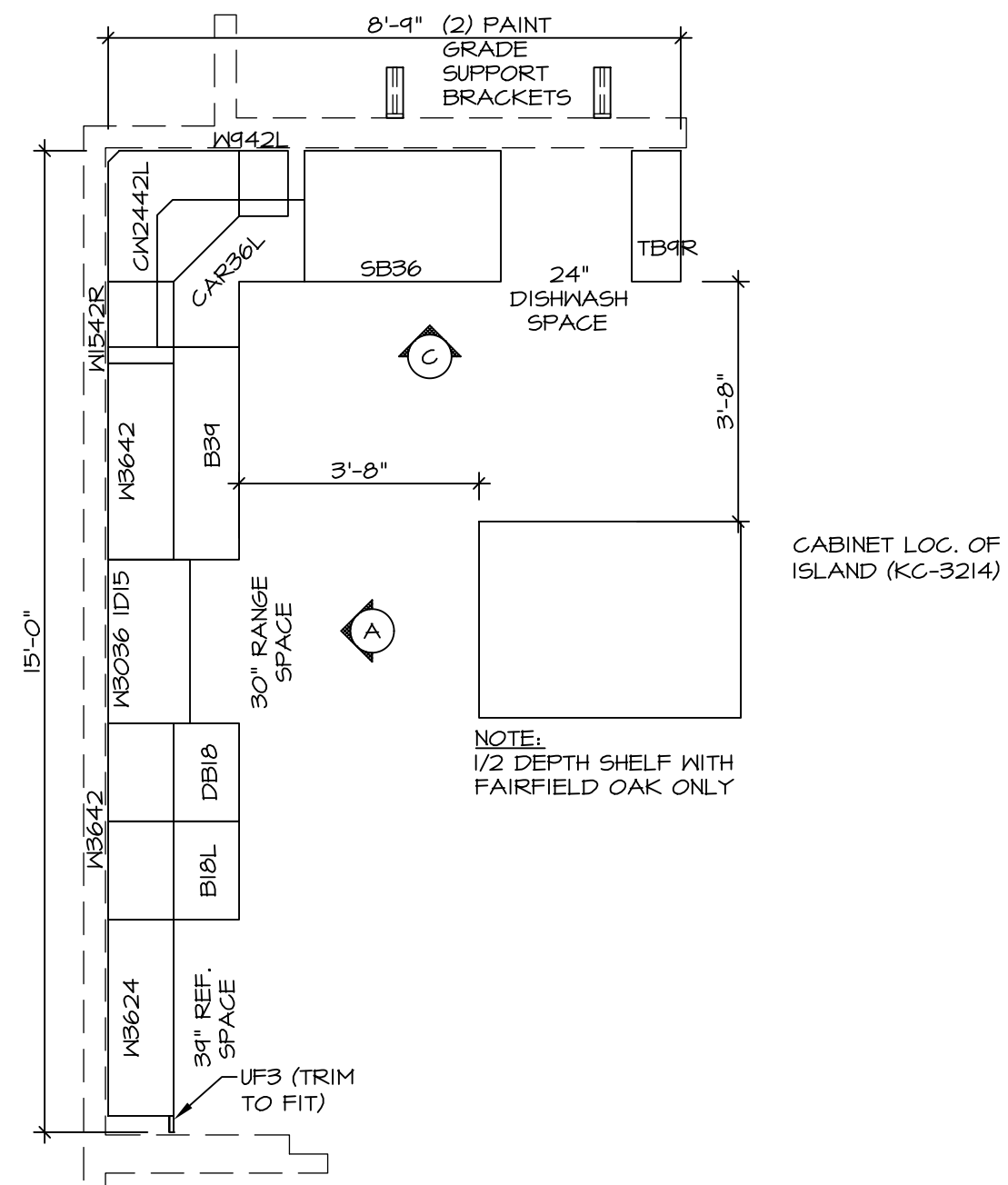
NVR, Inc., owner, expressly reserves its copyright in these plans. These plans are not to be reproduced, changed, copied in any way, or used for any other project without the written consent of NVR, Inc.

NVR
 NVR, Inc.
 Architectural Services
 Architects
 Suite 100
 5285 Westpark Drive
 Frederick, MD 21703

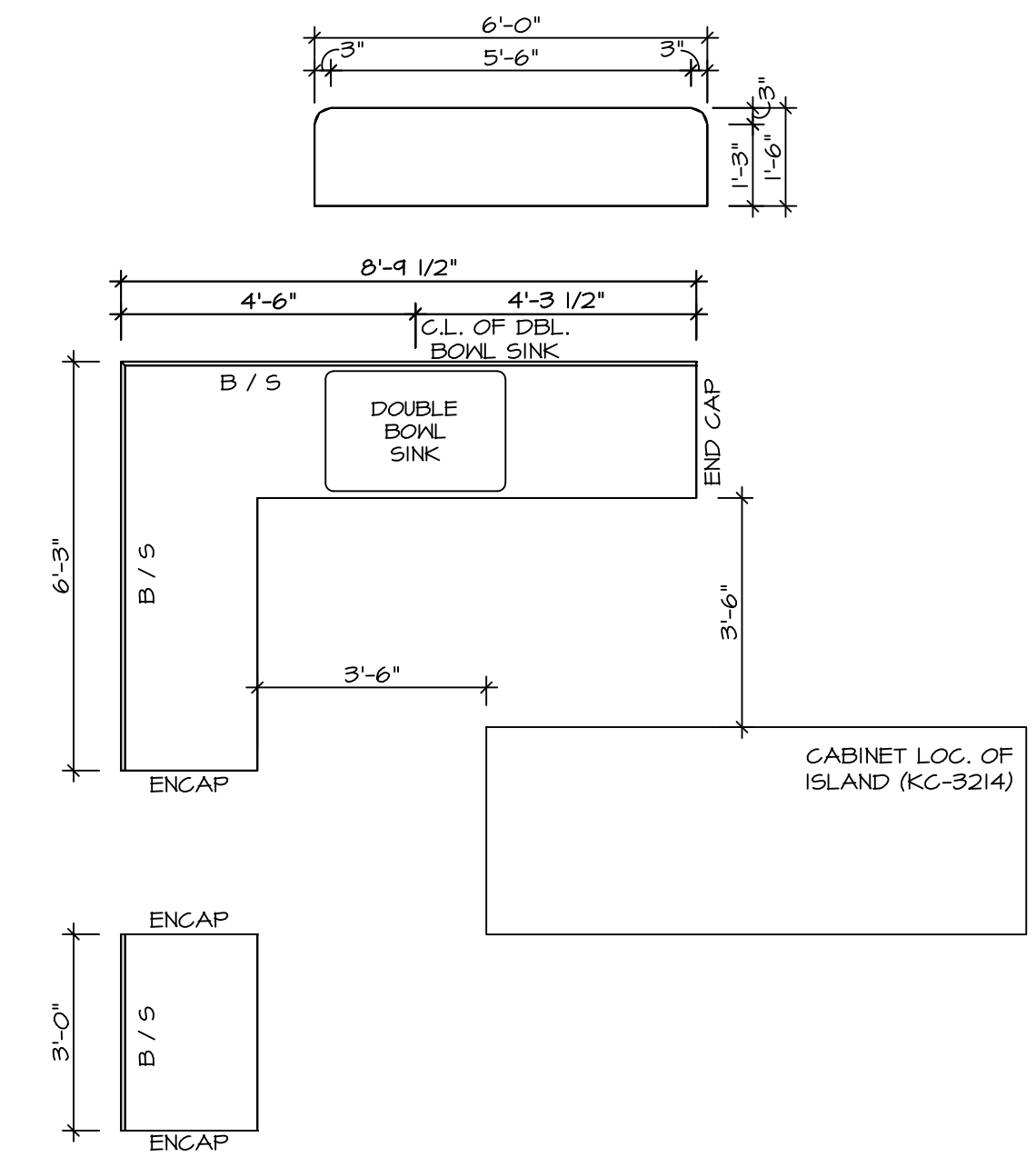
SET NO. PALOO
 VERSION 03
 DRAWN BY
 DATE:
 OPTION

MODEL PALERMO
 DRAWING TITLE SECOND FLOOR PLAN
 OPTION DESCRIPTION

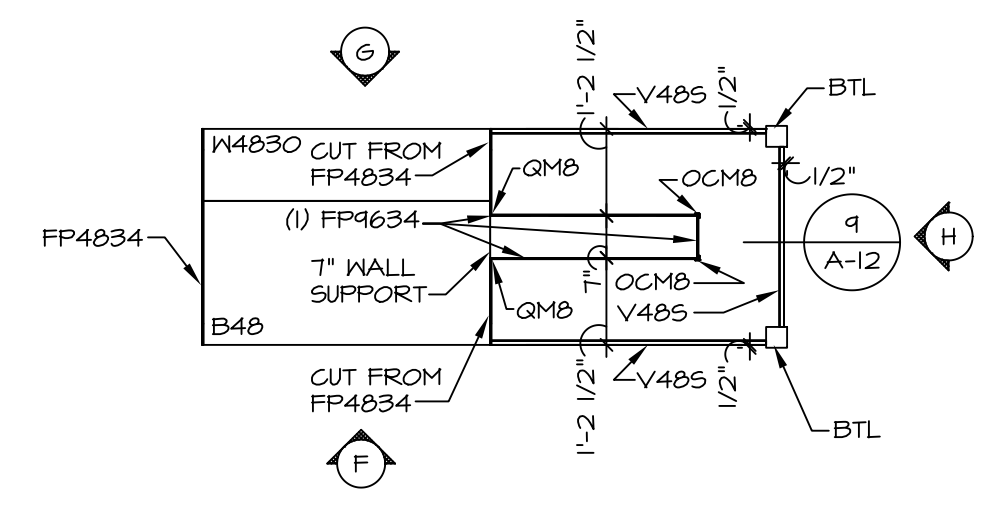
C:\NVR\Solves\PALERMO_PALOO_03\DC1-BX-0182\487500\Sheets\Lot_Specific\60 A-8 FLN2_L5.dwg 07/20/17 - 4:17 am



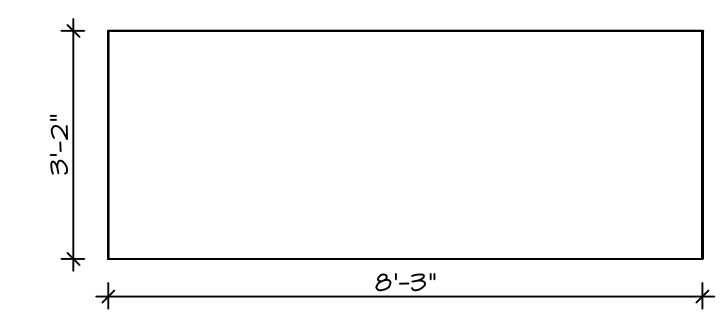
KITCHEN CABINET PLAN-KC-2862
 SCALE: 3/8" = 1'-0" STANDARD KITCHEN MORNING ROOM



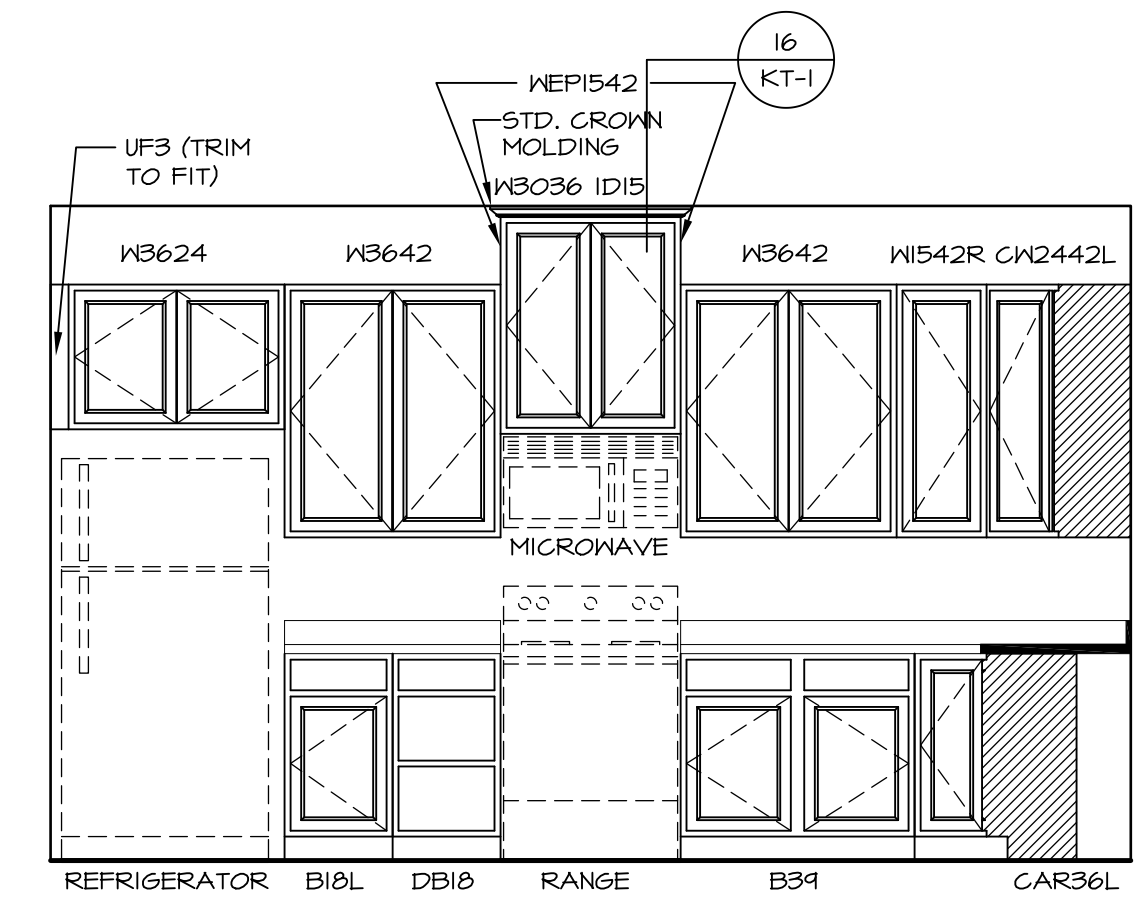
KITCHEN COUNTERTOP PLAN-KT-2862
 SCALE: 3/8" = 1'-0" STANDARD KITCHEN MORNING ROOM



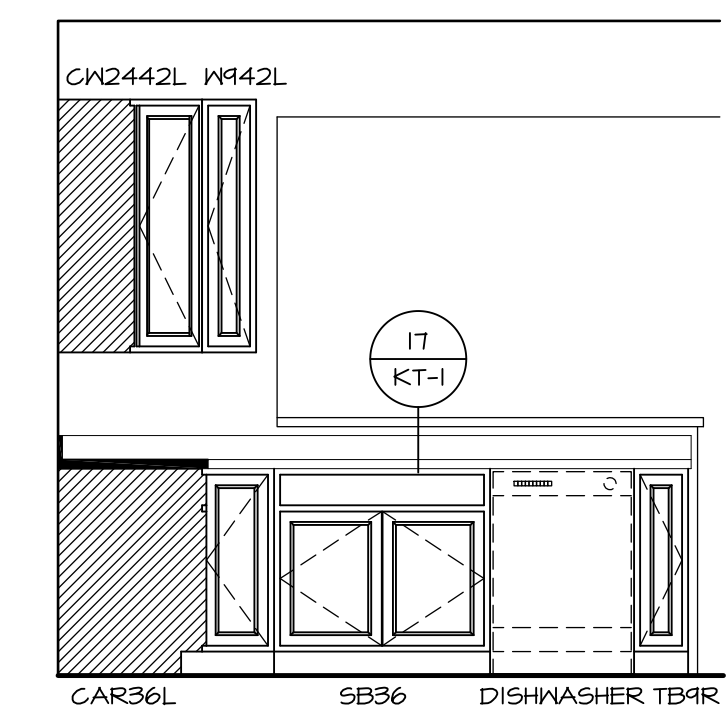
KITCHEN CABINET PLAN-KC-3214
 SCALE: 3/8" = 1'-0" GOURMET ISLAND



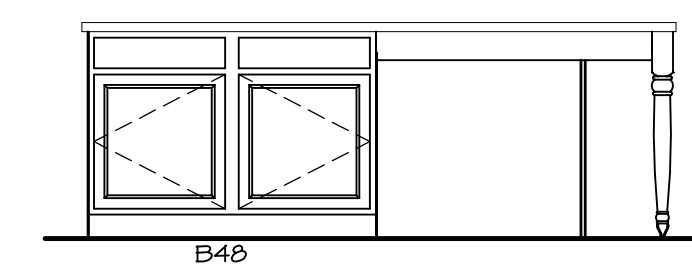
KITCHEN COUNTERTOP PLAN-KT-3214
 SCALE: 3/8" = 1'-0" GOURMET ISLAND



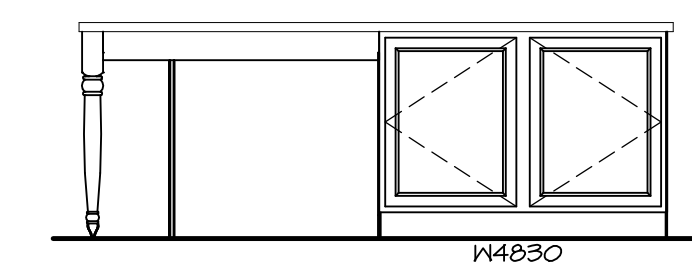
A KITCHEN ELEVATION
 SCALE: 3/8" = 1'-0"



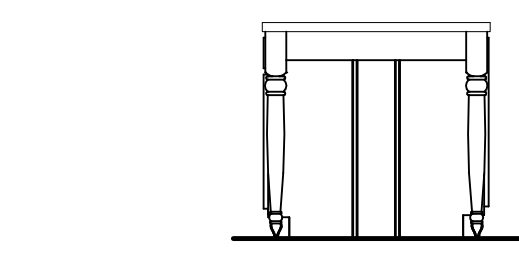
C KITCHEN ELEVATION
 SCALE: 3/8" = 1'-0"



F KITCHEN ELEVATION
 SCALE: 3/8" = 1'-0"



G KITCHEN ELEVATION
 SCALE: 3/8" = 1'-0"

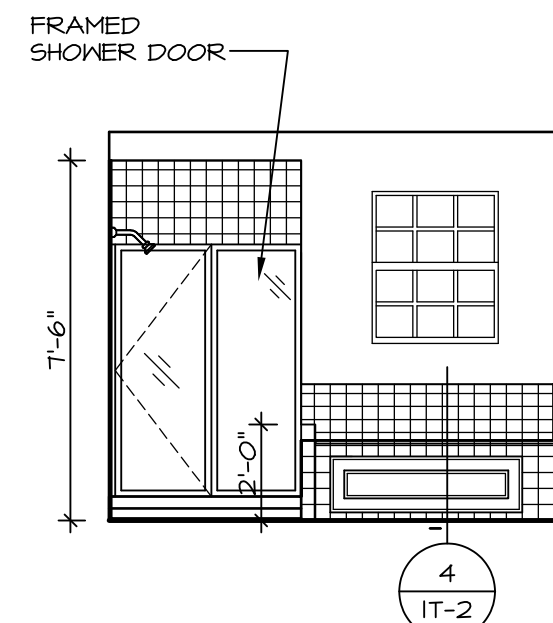


H KITCHEN ELEVATION
 SCALE: 3/8" = 1'-0"

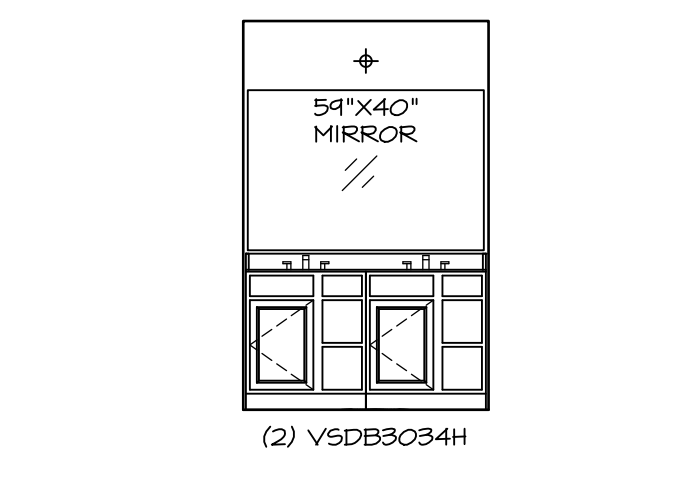
SHEET NO. A-12	MODEL PALERMO	SET NO. PALOO	REMARKS
	DRAWING TITLE	VERSION 03	
70	OPTION DESCRIPTION	DRAWN BY	REV. NO. DATE
		DATE:	
		OPTION	

NVR, Inc., owner, expressly reserves its common law copyright in these architectural plans. These plans are not to be reproduced, changed, copied, or otherwise used in any way without the written consent of NVR, Inc.

NVR
 NVR, Inc.
 Architectural Services
 Architects
 5285 Westover Hills
 Frederick, MD 21703



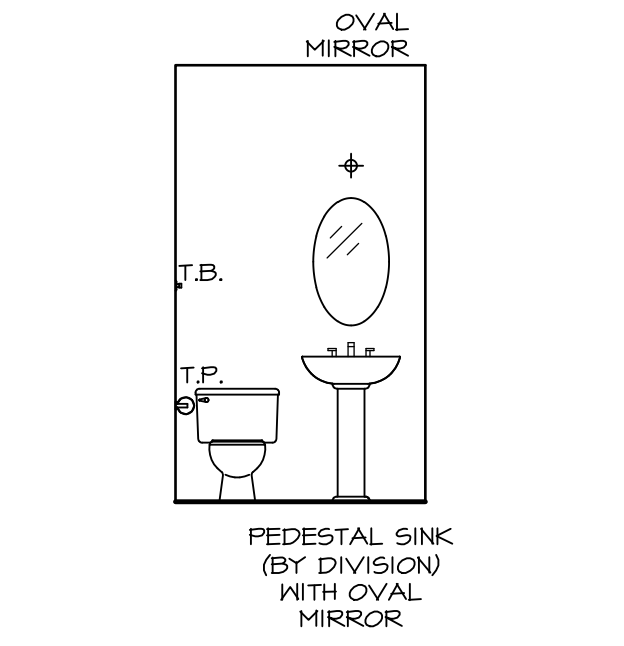
M OWNER'S BATH
SCALE: 1/4" = 1'-0"



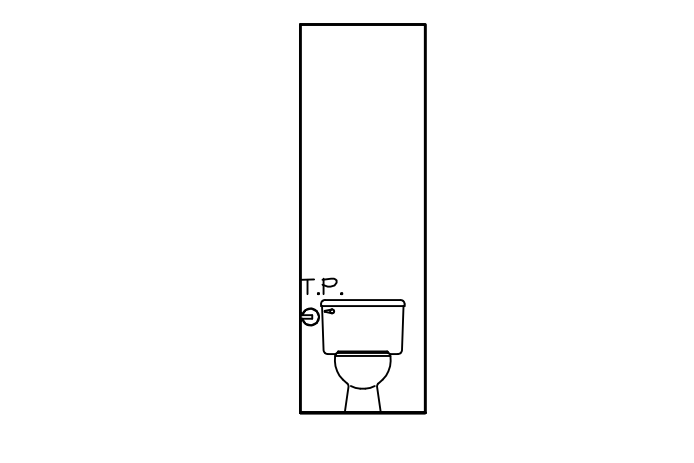
J OWNER'S BATH
SCALE: 1/4" = 1'-0"



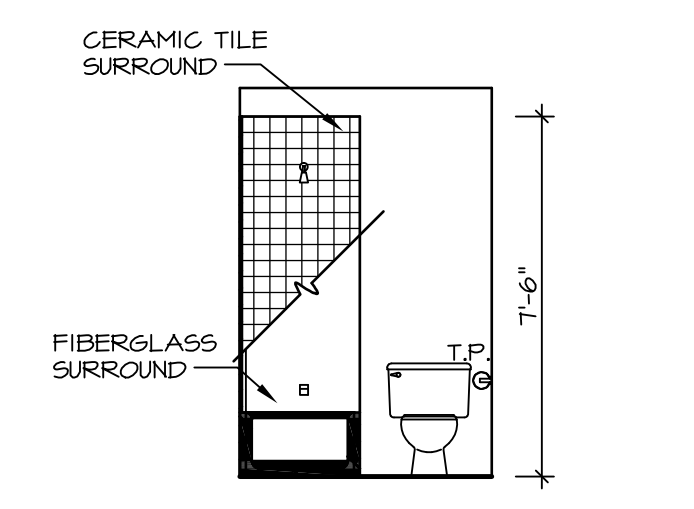
E BATH #1
SCALE: 1/4" = 1'-0"



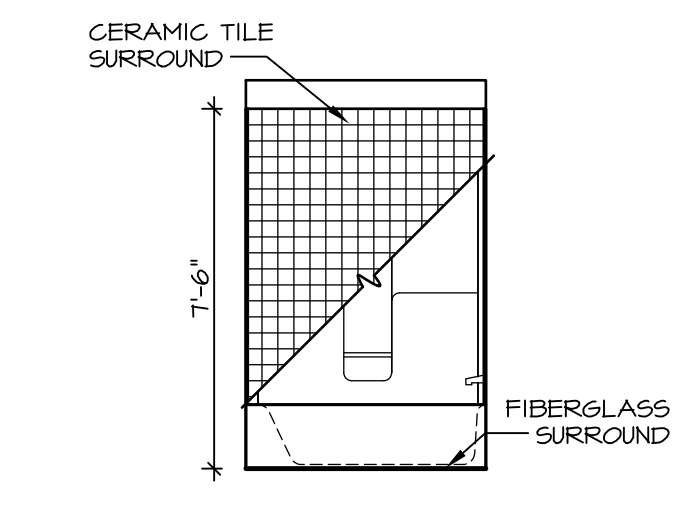
B POWDER ROOM
SCALE: 1/4" = 1'-0"



H OWNER'S BATH
SCALE: 1/4" = 1'-0"



G BATH #1
SCALE: 1/4" = 1'-0"

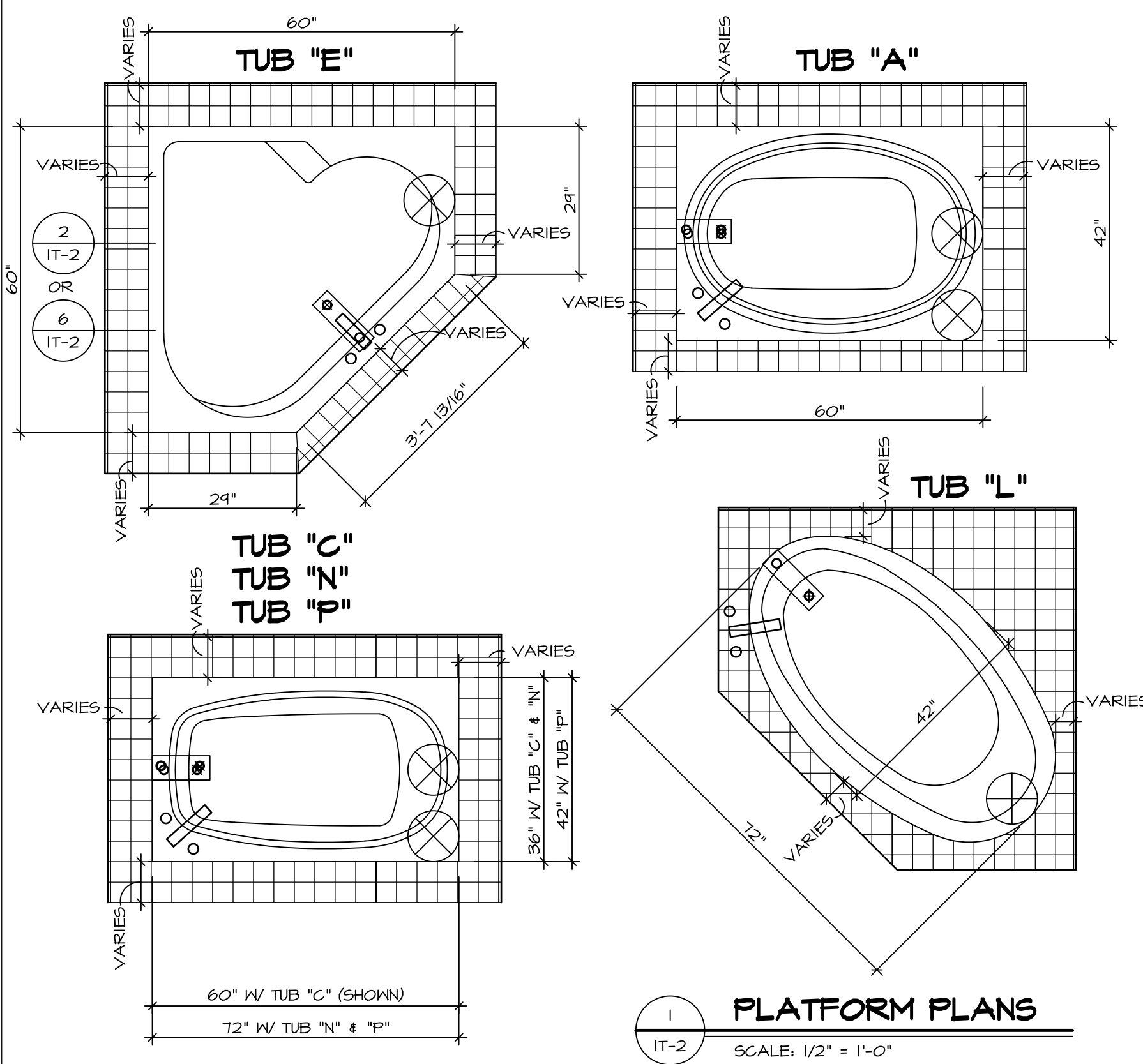


F BATH #1
SCALE: 1/4" = 1'-0"

NOTES:

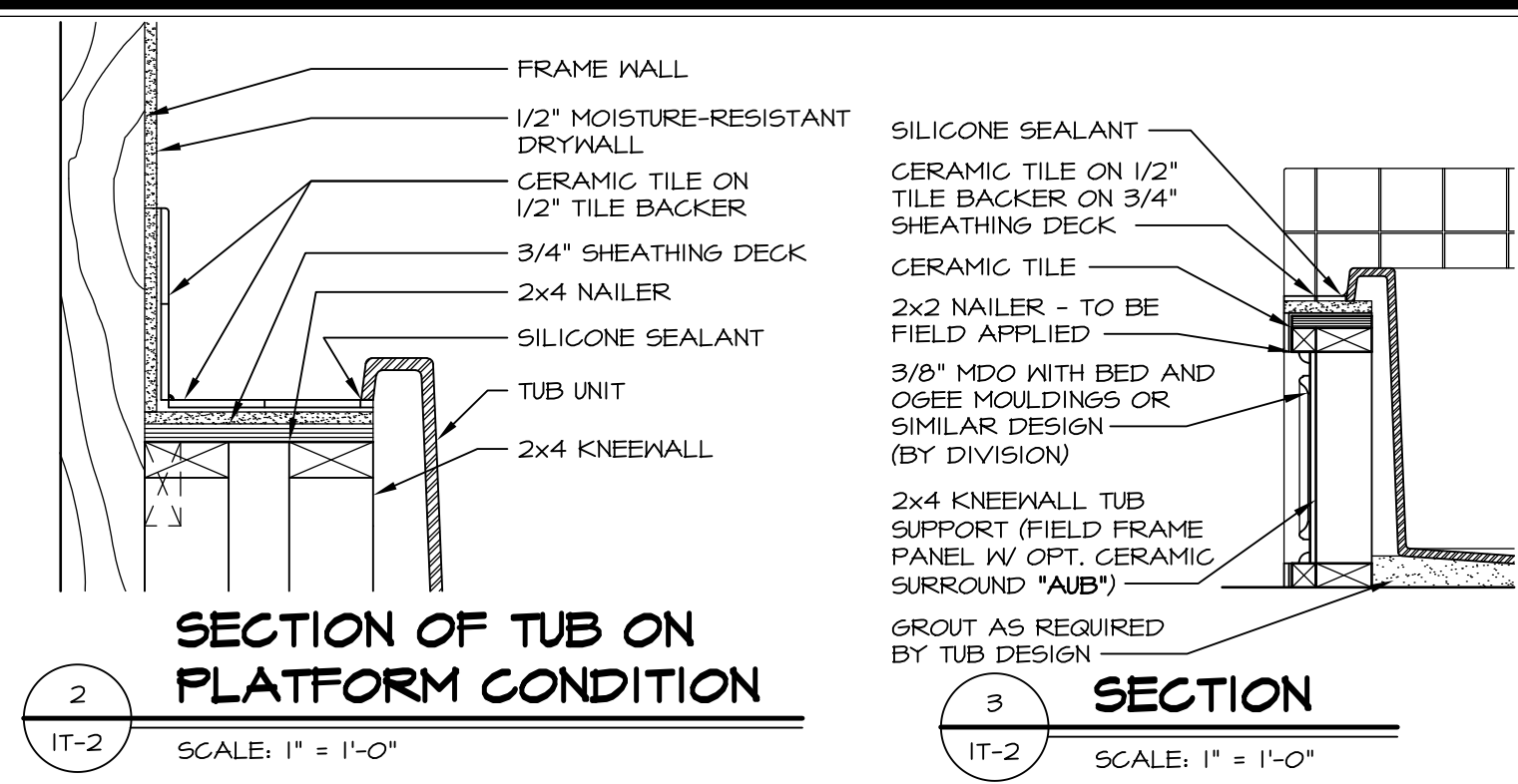
- TEMPERED GLASS SHOWER ENCLOSURE WITH SWING DOOR OR OPTIONAL SLIDING DOOR BY DIVISION
- TUB ACCESS PANELS PROVIDED AS NEEDED, ALL MATERIALS BY DIVISION
- REFER TO SHEET IT-2 FOR TUB AND SHOWER DETAILS.
- ALL V5DB24-42 DRAWERS TO BE SET ON RIGHT HAND.
- BATH ELEVATIONS ARE SHOWN PER PLAN.

SHEET NO. A-13	MODEL PALERMO	SET NO. PALOO	REVISION 03	DATE	OPTION	DRAWING TITLE BATH ELEVATIONS	DRAWN BY	DATE	OPTION	DESCRIPTION	72
	DRAWING TITLE BATH ELEVATIONS	SET NO. PALOO	REVISION 03	DATE	OPTION						
<p style="text-align: center;">NVR NVR, Inc. Architectural Services 5285 Westover Lane, Suite 100 Frederick, MD 21703</p>											
<p style="text-align: center;">NVR, Inc., owner, expressly reserves its copyright in these plans. These plans are not to be reproduced, changed, adapted, or used in any way without the written consent of NVR, Inc.</p>											
<p>REV. NO. DATE 08/04/16 TM - DRAWING ALIGNMENT</p>											
REMARKS											

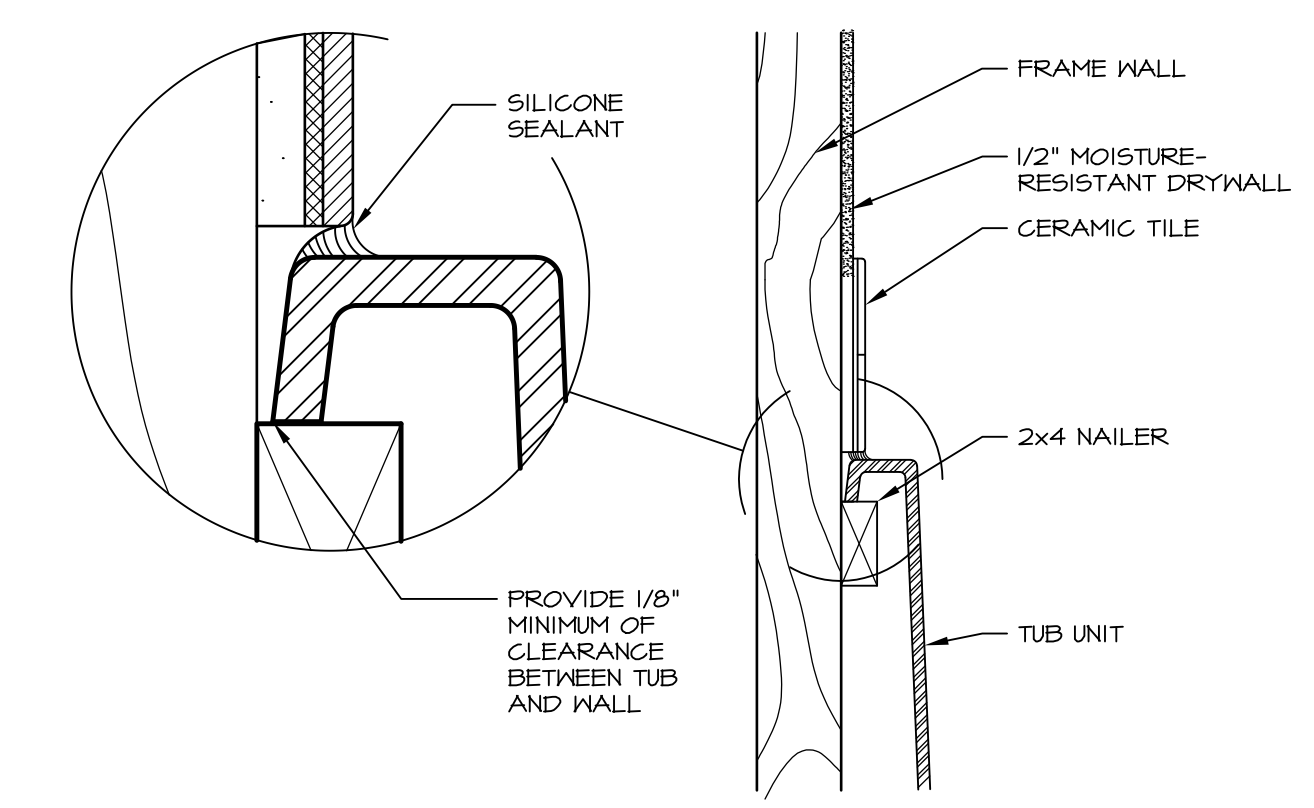


1 PLATFORM PLANS
SCALE: 1/2" = 1'-0"

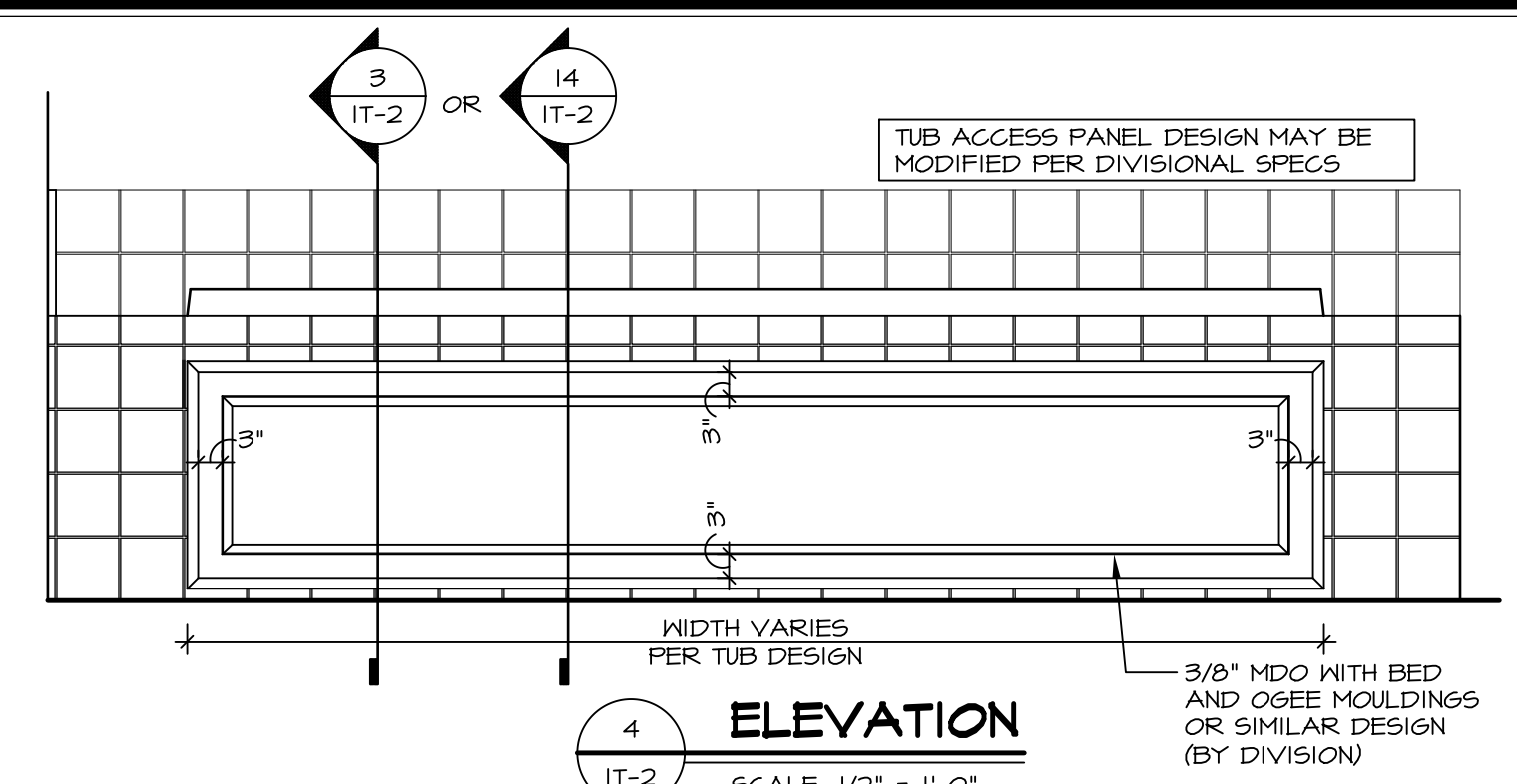
TUB	MANUF.	HEIGHT	WIDTH	LENGTH	TUB DECK PANEL HEIGHT
"A"	KOHLER/STERLING	18 3/4"	42"	60"	17 1/8"
"C"	KOHLER/STERLING	18 3/4"	36"	60"	17 1/8"
"E"	KOHLER/STERLING	19 1/2"	60"	60"	17 7/8"
"L"	KOHLER/STERLING	18 1/2"	42"	72"	16 7/8"
"N"	KOHLER/STERLING	18 3/4"	36"	72"	17 1/8"
"P"	KOHLER/STERLING	18 3/4"	42"	72"	17 1/8"



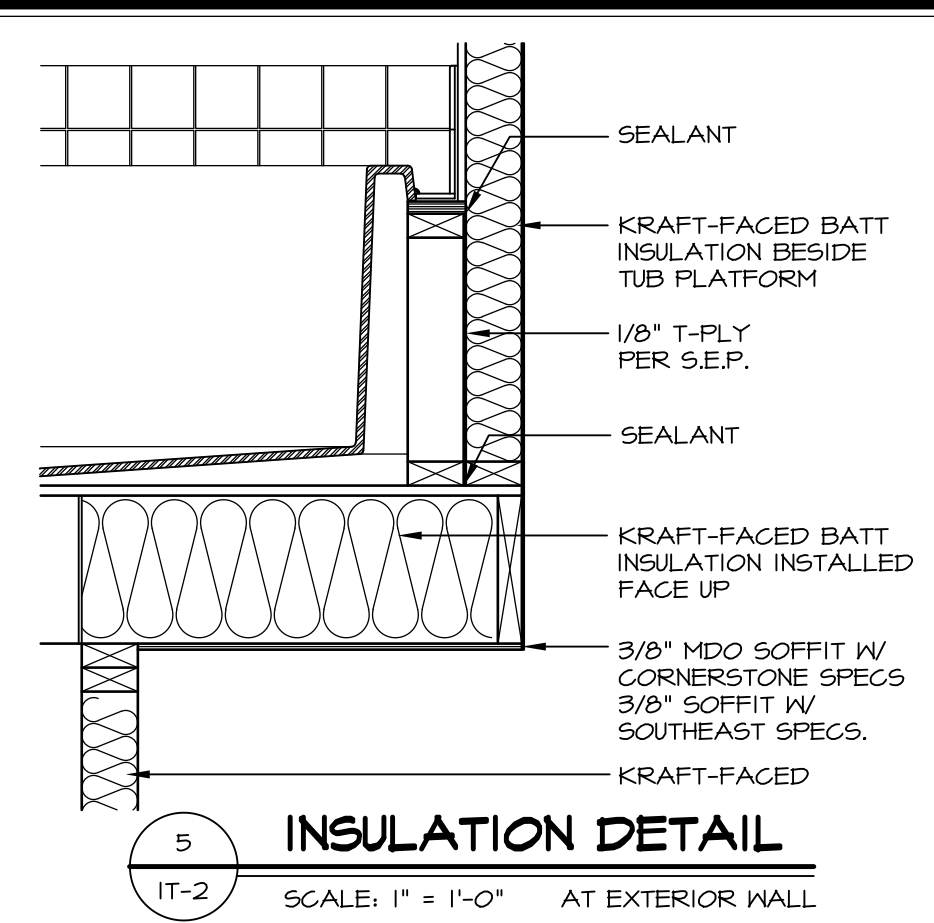
2 SECTION OF TUB ON PLATFORM CONDITION
SCALE: 1" = 1'-0"



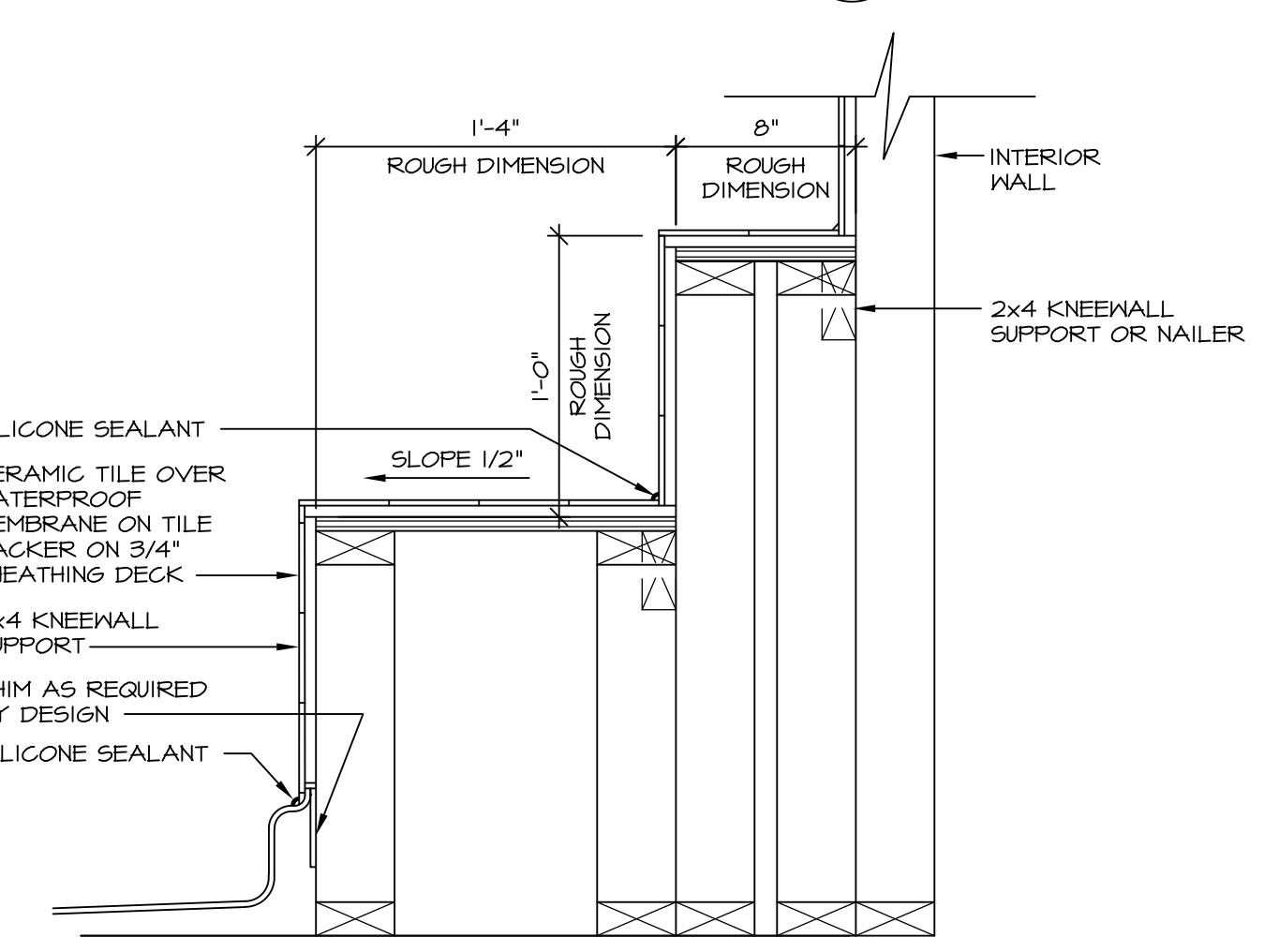
3 SECTION OF TUB TO WALL CONDITION
SCALE: 1 1/2" = 1'-0"



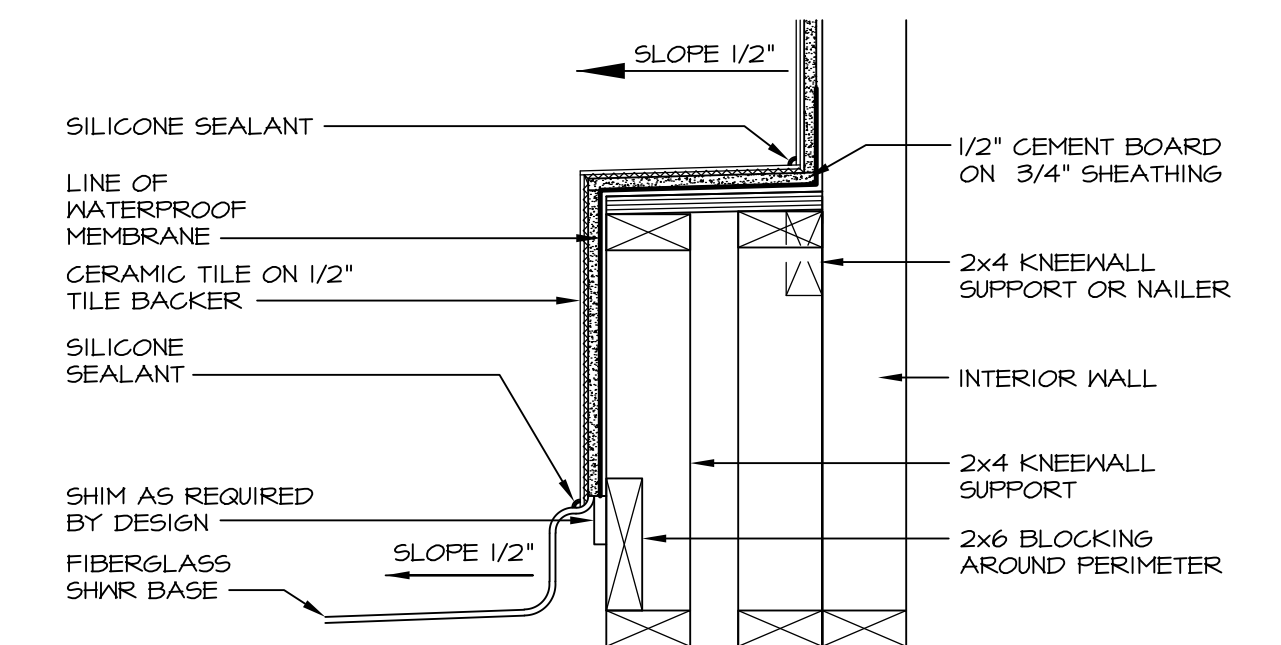
4 ELEVATION
SCALE: 1/2" = 1'-0"



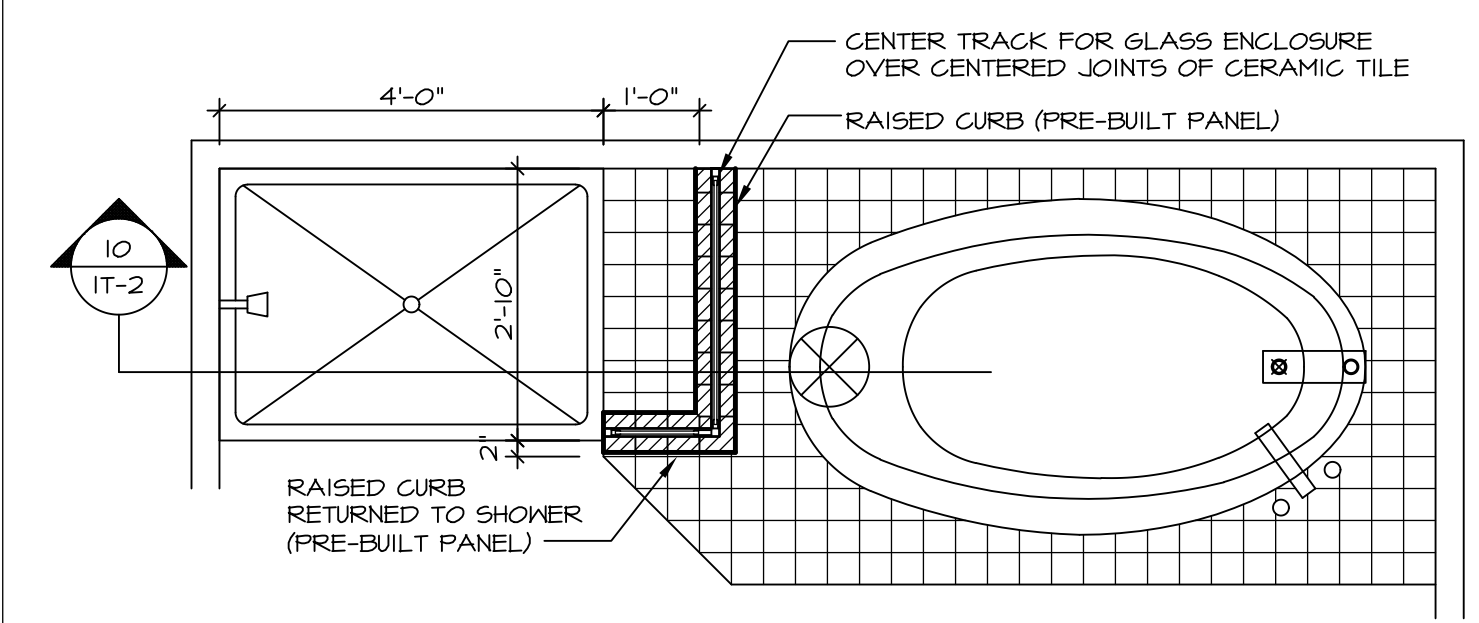
5 INSULATION DETAIL
SCALE: 1" = 1'-0" AT EXTERIOR WALL



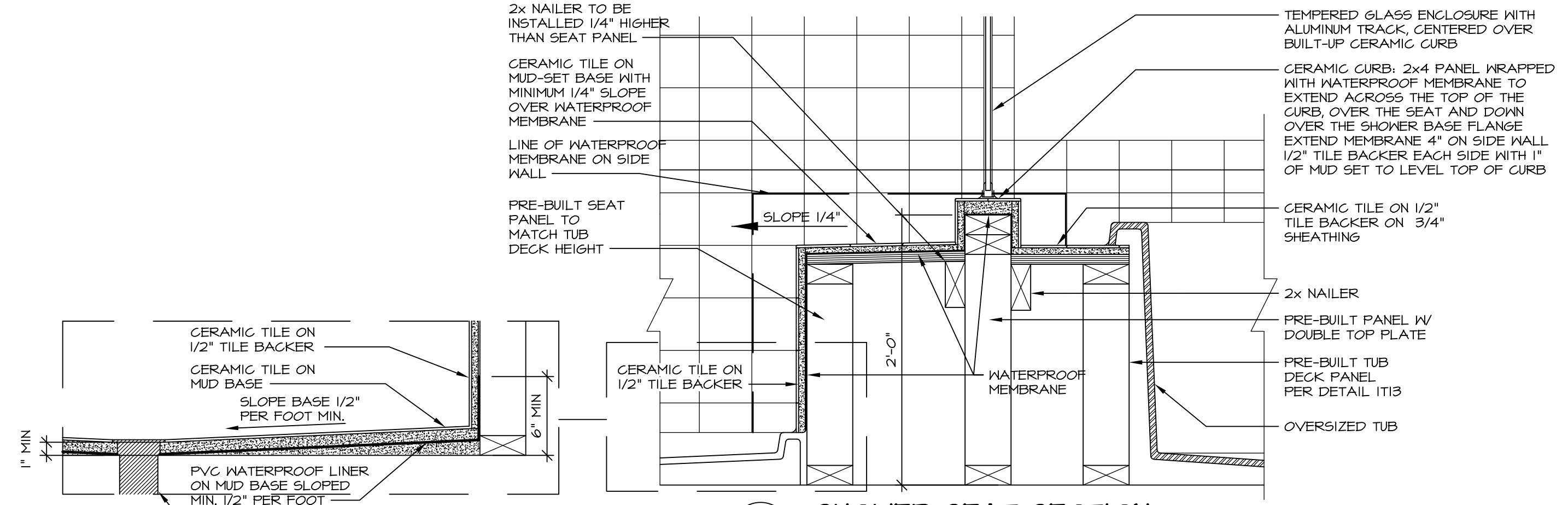
6 SECTION OF SHOWER SEAT AND SHELF
SCALE: 1 1/2" = 1'-0"



7 SECTION OF SHOWER SEAT
SCALE: 1-1/2" = 1'-0" FIBERGLASS SHOWER BASE



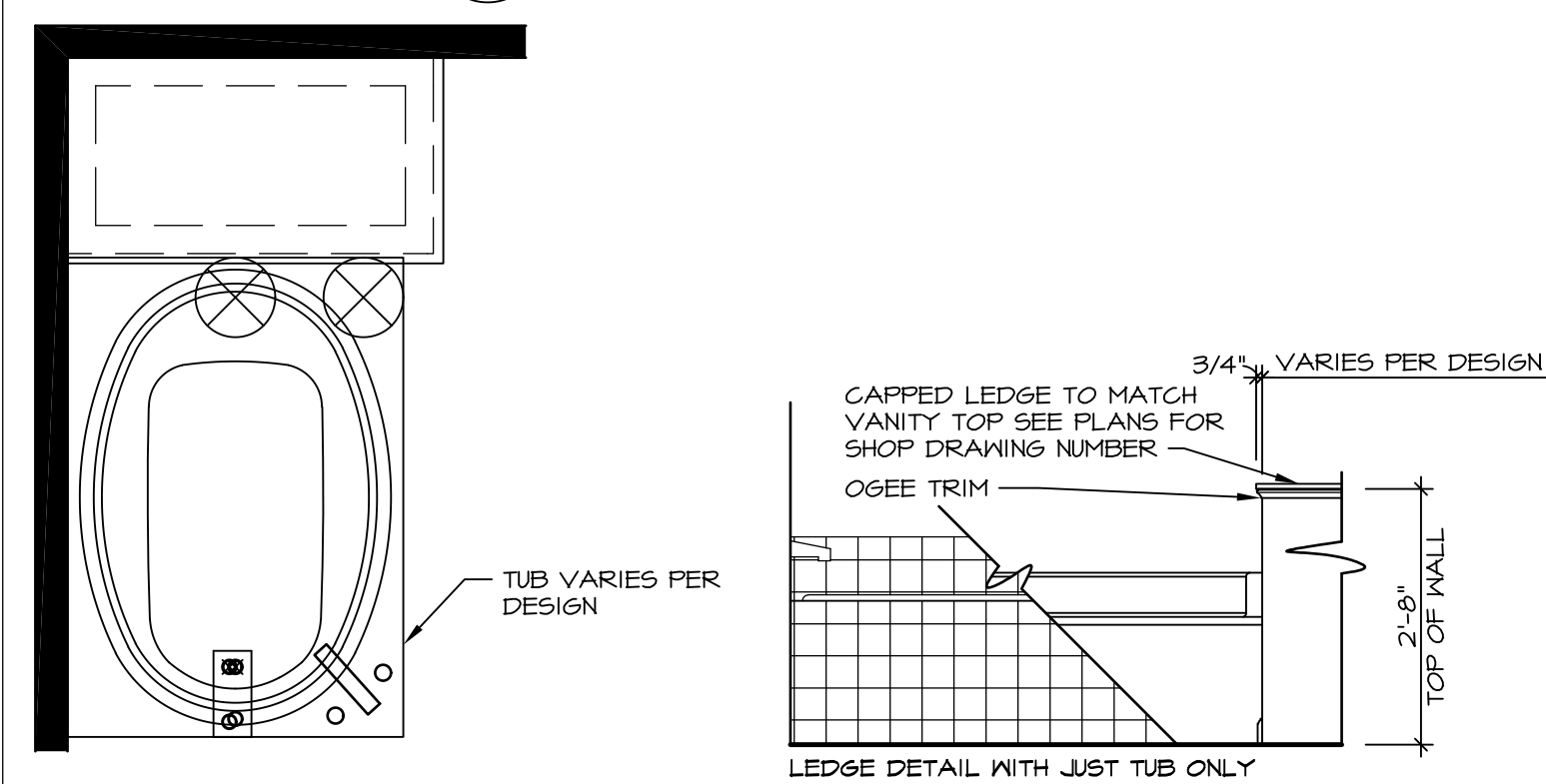
8 SHOWER SEAT PLAN / DETAIL
SCALE: 1/2" = 1'-0"



9 SHOWER SEAT SECTION
SCALE: 1-1/2" = 1'-0"



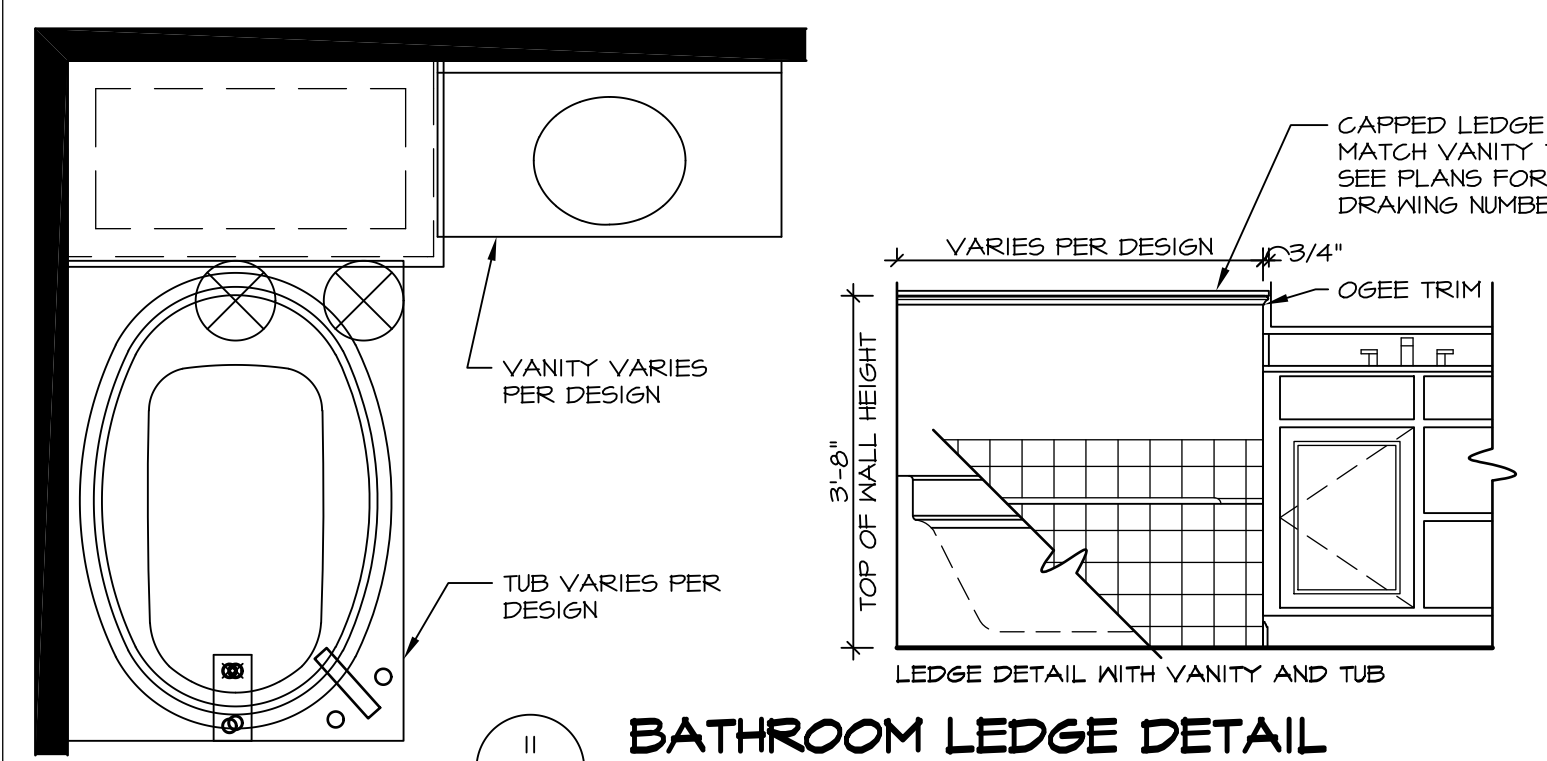
10 ALTERNATE SHOWER PAN DETAIL



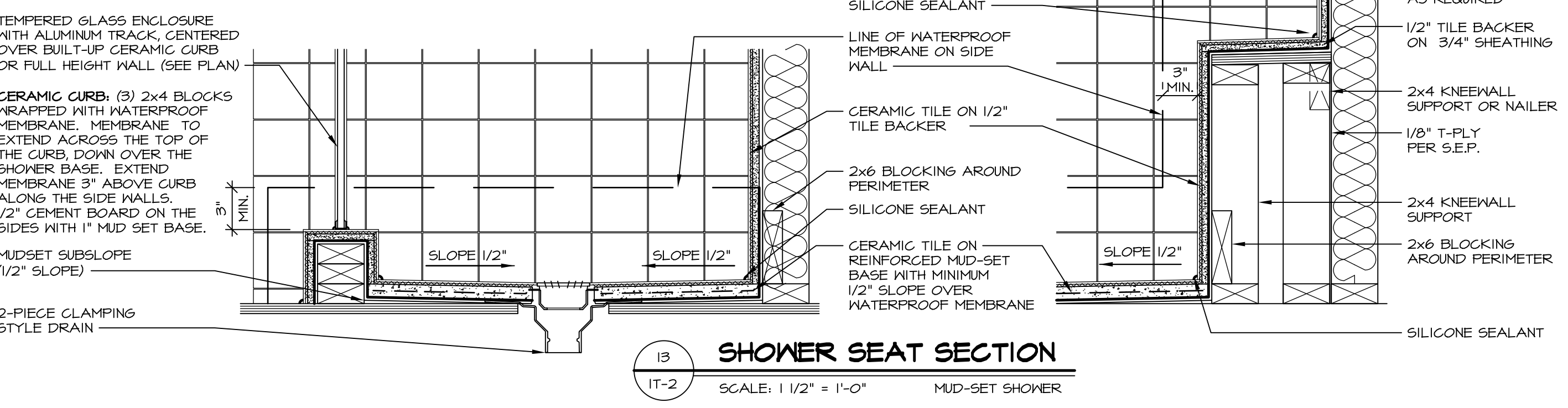
11 BATHROOM LEDGE DETAIL
SCALE: 1/2" = 1'-0"



12 SILL DETAIL
SCALE: 1" = 1'-0"



13 BATHROOM LEDGE DETAIL
SCALE: 1/2" = 1'-0"



14 SHOWER SEAT SECTION
SCALE: 1 1/2" = 1'-0" MUD-SET SHOWER

REVISIONS

REV. NO.	DATE	DESCRIPTION
1	5/11/17	ISSUE FOR PERMIT
2		
3		
4		
5		
6		
7		
8		
9		
10		
11		
12		
13		
14		

NVR, Inc., owner, expressly reserves its common law copyright and other property rights in these plans. These plans are not to be reproduced, copied, or otherwise used in any way without the prior written consent of NVR, Inc.

NVR
NVR, Inc.
Architectural Services
5285 Westpark Drive, Suite 100
Frederick, MD 21703

SET NO. NVR
VERSION
DRAWN BY
DATE
OPTION

STANDARD DETAILS
DRAWING TITLE
INTERIOR TRIM DETAILS
BATH DETAILS
OPTION DESCRIPTION

SHEET NO. **IT-2**