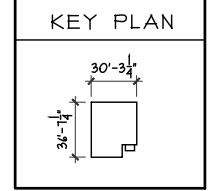


SHEET INDEX	
SHT#	DESCRIPTION
A1	Front and Rear Elevations
A1a	Left and Right Elevations
A2	Foundation Plan
A3	First Floor Plan
A4	Second Floor Plan
A5	Typical Wall Sections/Stair Section
A6	Typical Framing Details (Aluminum)
G1	General Notes

NOTE:  
 PLANS PRINTED ON 24x36 SHEETS TO BE SCALABLE AT FULL SCALE. 1/4" = 1'-0"  
 PLANS PRINTED ON 11x17 SHEETS TO BE SCALABLE AT HALF SCALE. 1/8" = 1'-0"

251608B3 PLAN INFO	
4	BDRMS
2.5	BATHS
2	CAR GARAGE
8	1ST FLR. CLG.
SQUARE FOOTAGE	
TOTAL	1608
MAIN	433
UPPER	995
LOWER(FINISH)	178
LOWER(SLAB)	541
GARAGE(SLAB)	312



**OPTIONS**

**Issue Dates**  
 Review: 12/4/20 REVISIONS

**Proposed Residence:**  
 Cristo Homes  
 825 Prescott Circle  
 Centennial Run 70's Lot #4709

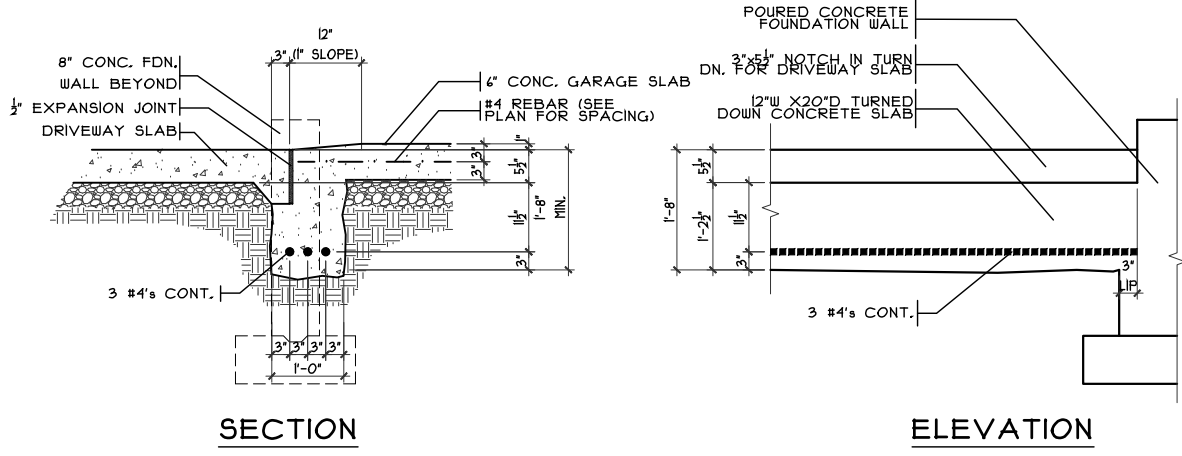
**Front And Rear Elevations**  
 Plan: Rental Rowley Basement  
 Date: 10/26/20  
 Drawn: KMA  
 Scale: As Noted  
 Revised: 12/4/20  
 Sheet: 1 of 11

**Cristo Homes**  
 7594-A Tylers Place Blvd.  
 West Chester, OH 45069  
 513.795.0570 www.cristohomes.com

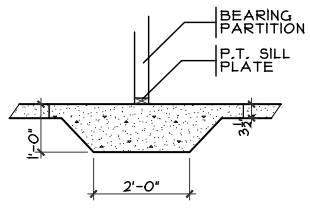
**Rowley - C6 - Vinyl**  
 Cristo Homes reserves all property rights in these plans. These plans are not to be reproduced, changed, or copied in any manner. They are not to be given to a third party, either in full or in part, without first receiving written permission from Cristo Homes. In the event these plans are used by a third party, Cristo Homes shall be held harmless.

**Trenton**  
**Butler County**

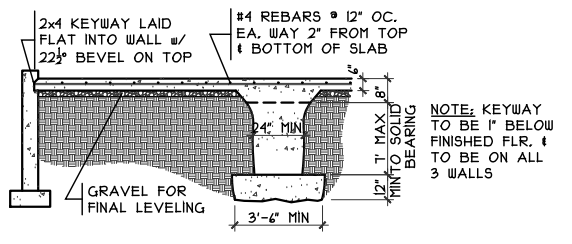
**A1**



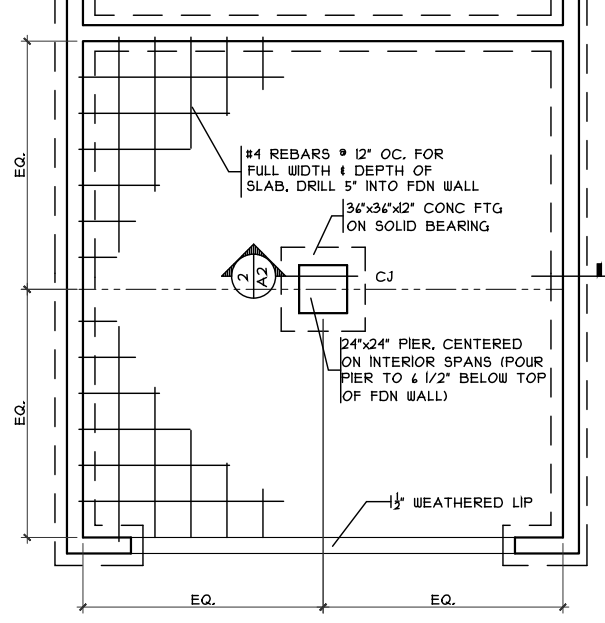
**GARAGE DOOR GRADE BM**  
 SCALE: 3/8" = 1'-0"



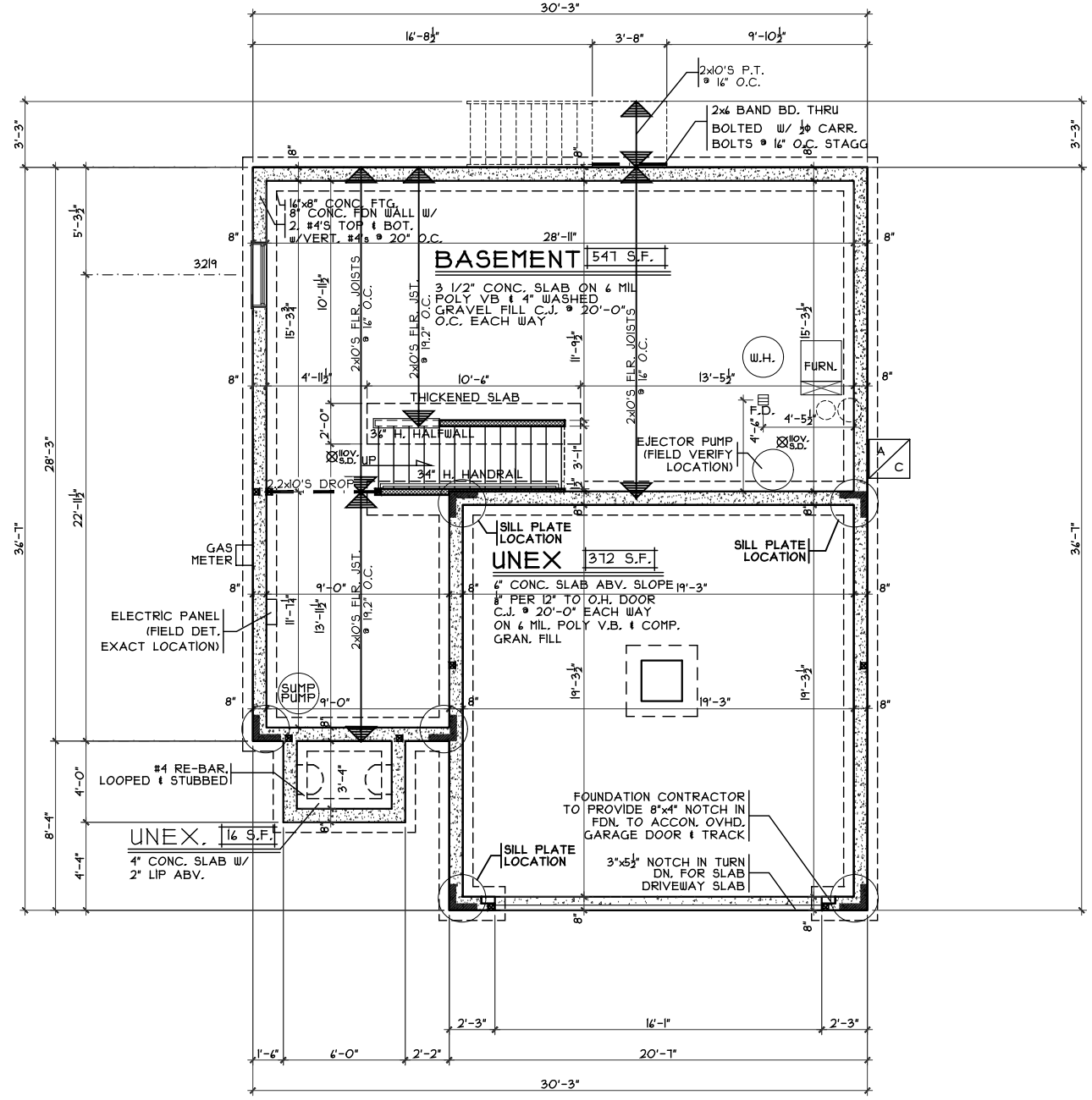
**THICKENED SLAB**  
 SCALE: 1/4" = 1'-0"



**GRADE BM SECTION**  
 SCALE: 1/8" = 1'-0"



**GRADE BM DETAIL**  
 SCALE: 1/8" = 1'-0"



**FOUNDATION PLAN**  
 SCALE: 1/8" = 1'-0"

**Foundation Plan**  
 Plan: Rental Rowley Basement  
 Date: 10/26/20  
 Drawn: KMA  
 Scale: As Noted  
 Revised: 12/4/20  
 Sheet: 3 of 11

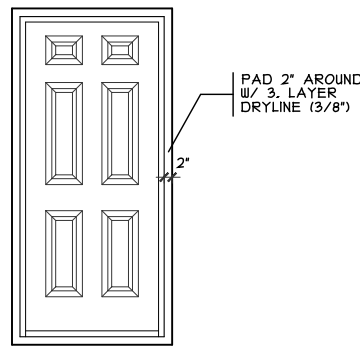
**Proposed Residence:**  
 Cristo Homes  
 825 Prescott Circle  
 Centennial Run 70's Lot #4709

**CRISTO HOMES**  
 7594-A Tylers Place Blvd.  
 West Chester, OH 45069  
 513.755.0570 www.cristohomes.com

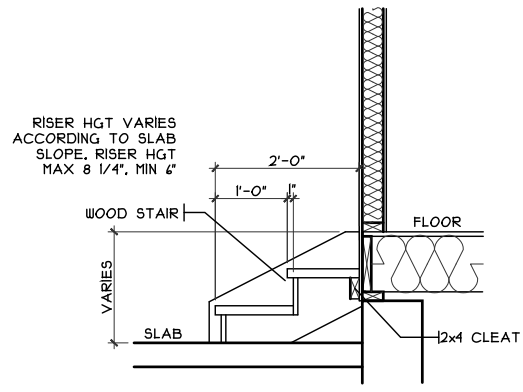
**Rowley - C6 - Vinyl**  
 Cristo Homes reserves all property rights in these plans. These plans are not to be reproduced, changed, or copied in any manner. They are not to be given to a third party, either in full or in part, without first receiving written permission from Cristo Homes. In the event these plans are used by a third party, Cristo Homes shall be held harmless.

**Issue Dates**  
 Review: 12/4/20 REVISIONS

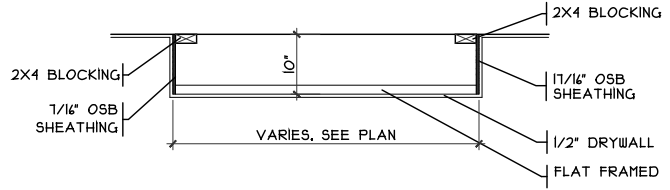
**Trenton**  
**Butler County**



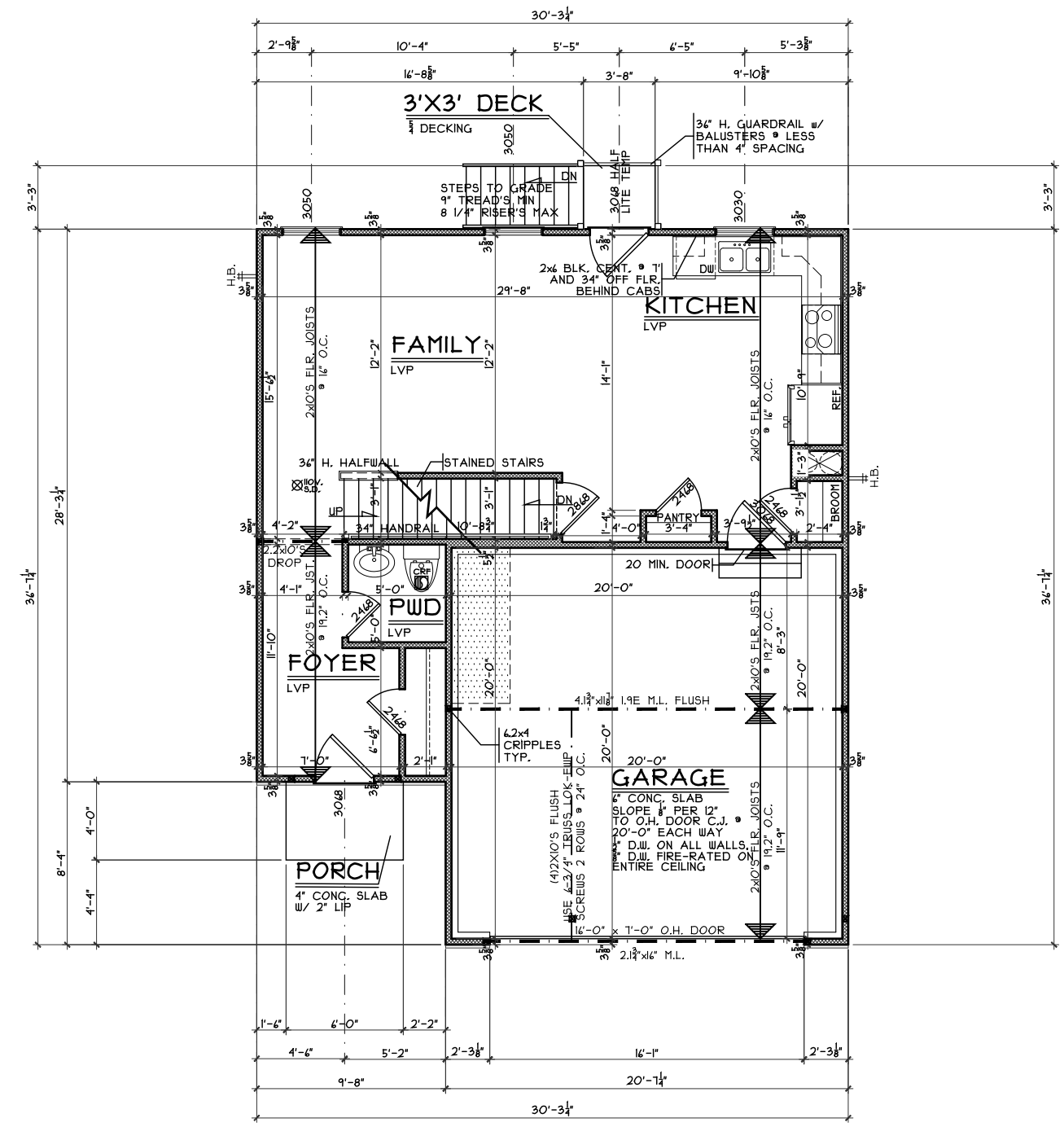
**DOOR FRAMING DTL.**  
SCALE: 1/4" = 1'-0"



**GARAGE STEPS**  
SCALE: 1/8" = 1'-0"



**DROP CLG. DETAIL**  
SCALE: 1/8" = 1'-0"



**FIRST FLOOR PLAN**  
SCALE: 1/8" = 1'-0" 43 S.F.

First Floor Plan

Plan: Rental Rowley Basement  
Date: 10/26/20  
Drawn: KMA  
Scale: As Noted  
Revised: 12/4/20  
Sheet: 4 of 11

CR-4709

Proposed Residence:  
Cristo Homes  
825 Prescott Circle  
Centennial Run 70's Lot #4709



7594-A Tylers Place Blvd.  
West Chester, OH 45069  
513.795.0570 www.cristohomes.com

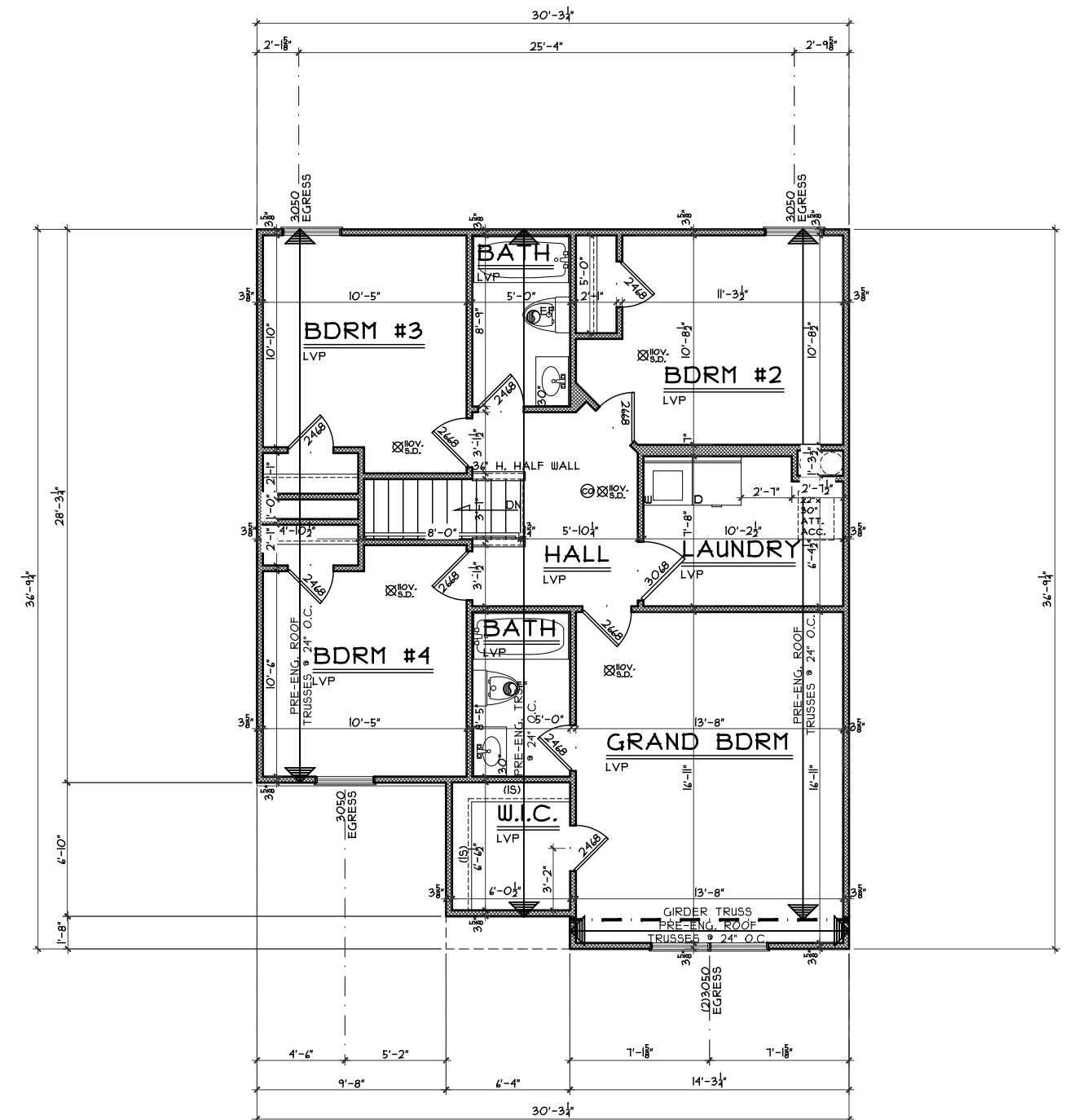
Rowley - C6 - Vinyl

Cristo Homes reserves all property rights in these plans. These plans are not to be reproduced, changed, or copied in any manner. They are not to be given to a third party, either in full or in part, without first receiving written permission from Cristo Homes. In the event these plans are used by a third party, Cristo Homes shall be held harmless.

Issue Dates

Review	Issue Dates
Δ	12/4/20 REVISIONS

A3



**SECOND FLOOR PLAN**  
SCALE: 1/8" = 1'-0" 995 S.F.

**Second Floor Plan**

Plan: Rental Rowley Basement  
Date : 10/26/20  
Drawn: KMA  
Scale : As Noted  
Revised: 12/4/20  
Sheet : 5 of 11



7594-A Tylers Place Blvd.  
West Chester, OH 45069  
513.795.0570 www.cristohomes.com

CR-4709

Proposed Residence:

Cristo Homes  
825 Prescott Circle  
Centennial Run 70's Lot #4709

Trenton

Butler County

Rowley - C6 - Vinyl

Cristo Homes reserves all property rights in these plans. These plans are not to be reproduced, changed, or copied in any manner. They are not to be given to a third party, either in full or in part, without first receiving written permission from Cristo Homes. In the event these plans are used by a third party, Cristo Homes shall be held harmless.

**Issue Dates**

Review	Issue Dates
Δ	12/4/20 REVISIONS

**A4**