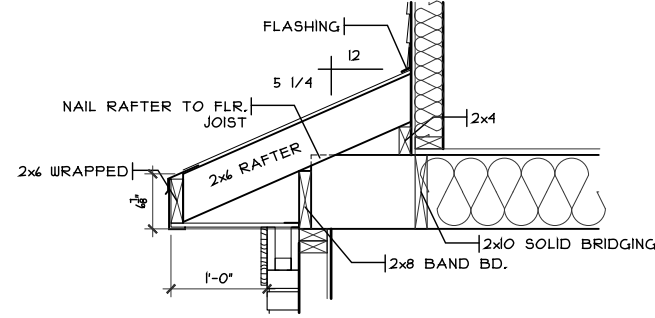
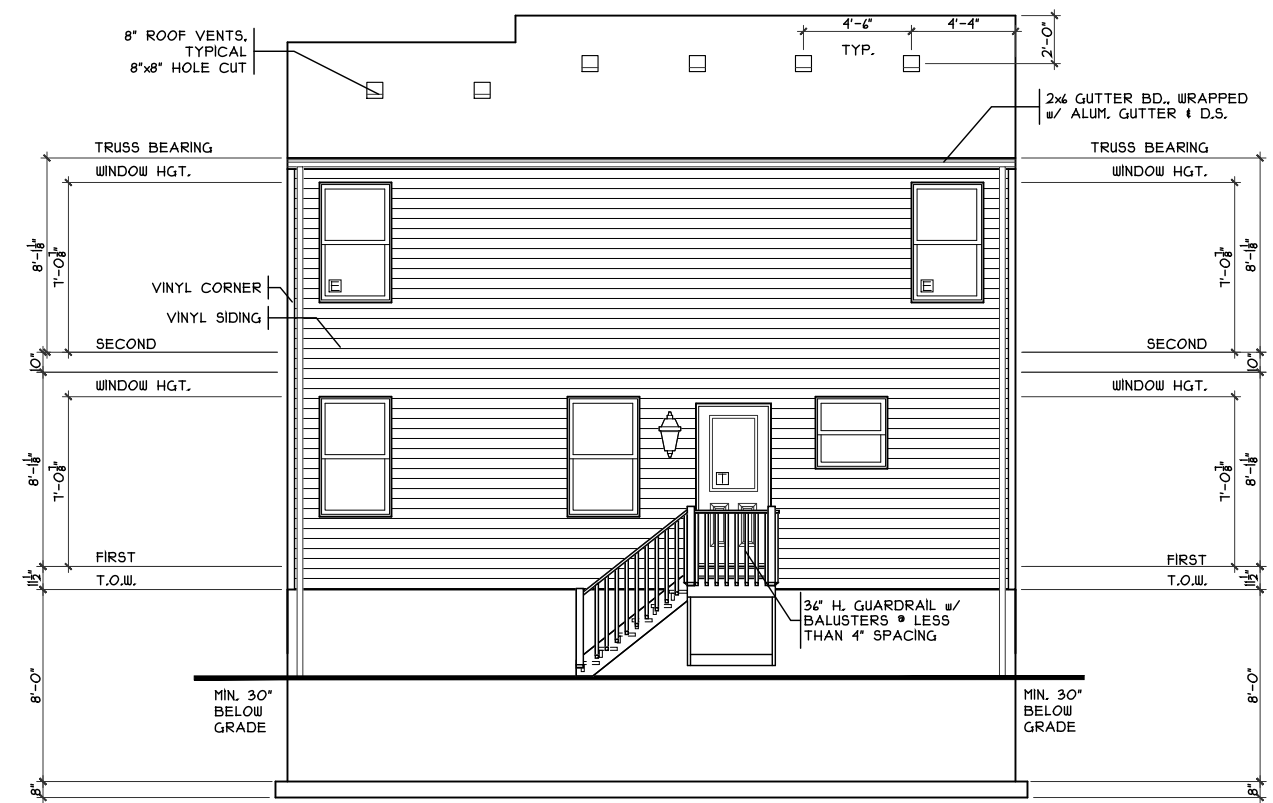


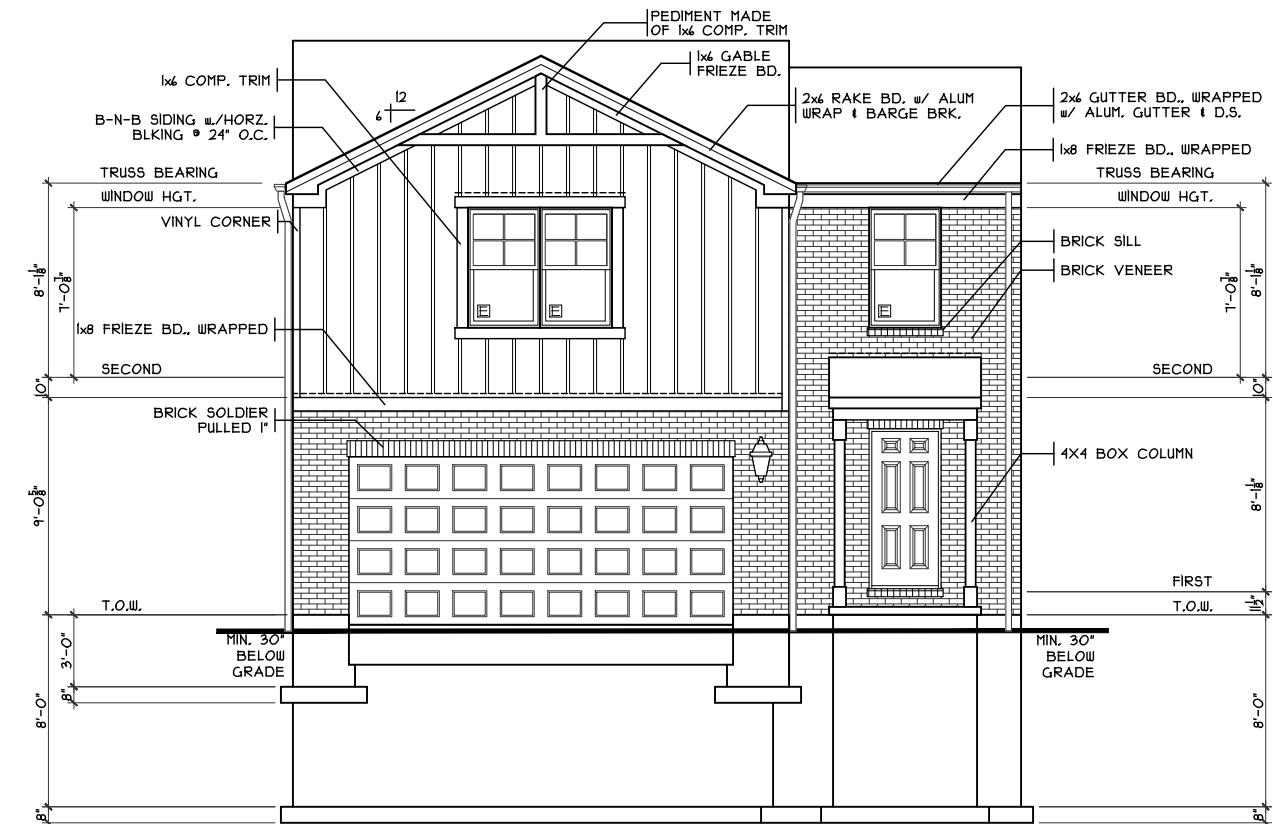
PORCH DETAIL
SCALE: 1/4" = 1'-0"



GARAGE DETAIL
SCALE: 1/2" = 1'-0"



REAR ELEVATION
SCALE: 1/8" = 1'-0"

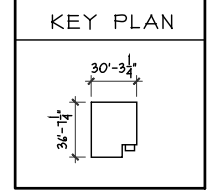


FRONT ELEVATION
SCALE: 1/8" = 1'-0"

SHEET INDEX	
SHT#	DESCRIPTION
A1	Front and Rear Elevations
A1a	Left and Right Elevations
A2	Foundation Plan
A3	First Floor Plan
A3a	Portal Framing Detail
A4	Second Floor Plan
A5	Typical Wall Sections/Stair Section
A6	Typical Framing Details (Aluminum)
G1	General Notes

NOTE:
PLANS PRINTED ON 24x36 SHEETS TO BE SCALABLE AT FULL SCALE. 1/4" = 1'-0"
PLANS PRINTED ON 11x17 SHEETS TO BE SCALABLE AT HALF SCALE. 1/8" = 1'-0"

25148B3 PLAN INFO	
4	BDRMS
2.5	BATHS
2	CAR GARAGE
8	1ST FLR. CLG.
SQUARE FOOTAGE	
TOTAL	148
MAIN	44
UPPER	1002
LOWER(FINISH)	404
LOWER(GLAB)	550
GARAGE(SLAB)	318



OPTIONS

C7-4713

Proposed Residence:
Cristo Homes
833 Prescott Circle
Centennial Run 70's Lot #4713

Rowley - B5 - Vinyl

Issue Dates

Review	

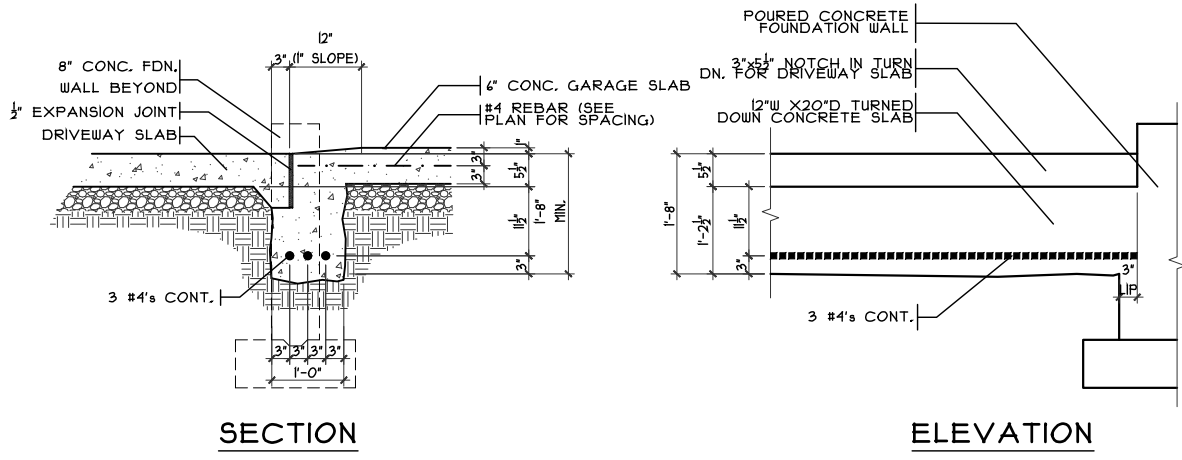
Cristo Homes reserves all property rights in these plans. These plans are not to be reproduced, changed, or copied in any manner. They are not to be given to a third party, either in full or in part, without first receiving written permission from Cristo Homes. In the event these plans are used by a third party, Cristo Homes shall be held harmless.

Trenton
Butler County

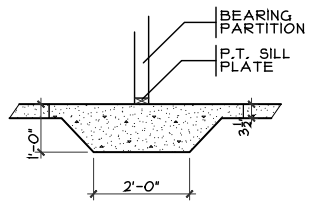
Front And Rear Elevations

Plan: Rental Rowley Basement
Date : 10/23/20
Drawn: KMA
Scale : As Noted
Revised: 3/1/21
Sheet : 1 of 12

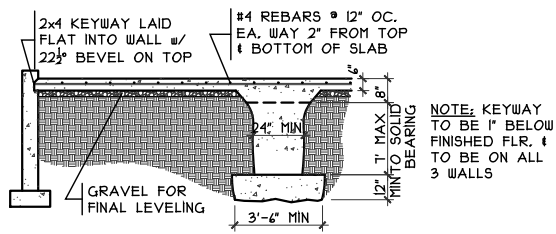
CRISTO HOMES
7594-A Tylers Place Blvd.
West Chester, OH 45069
513.795.0570 www.cristohomes.com



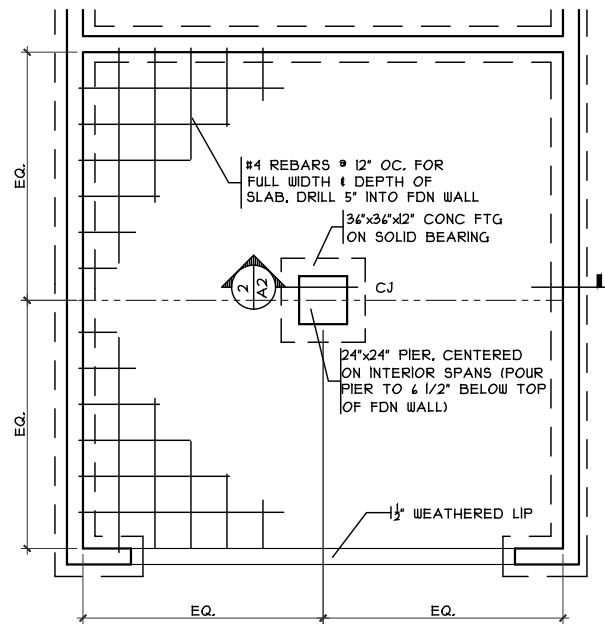
GARAGE DOOR GRADE BM
SCALE: 3/8" = 1'-0"



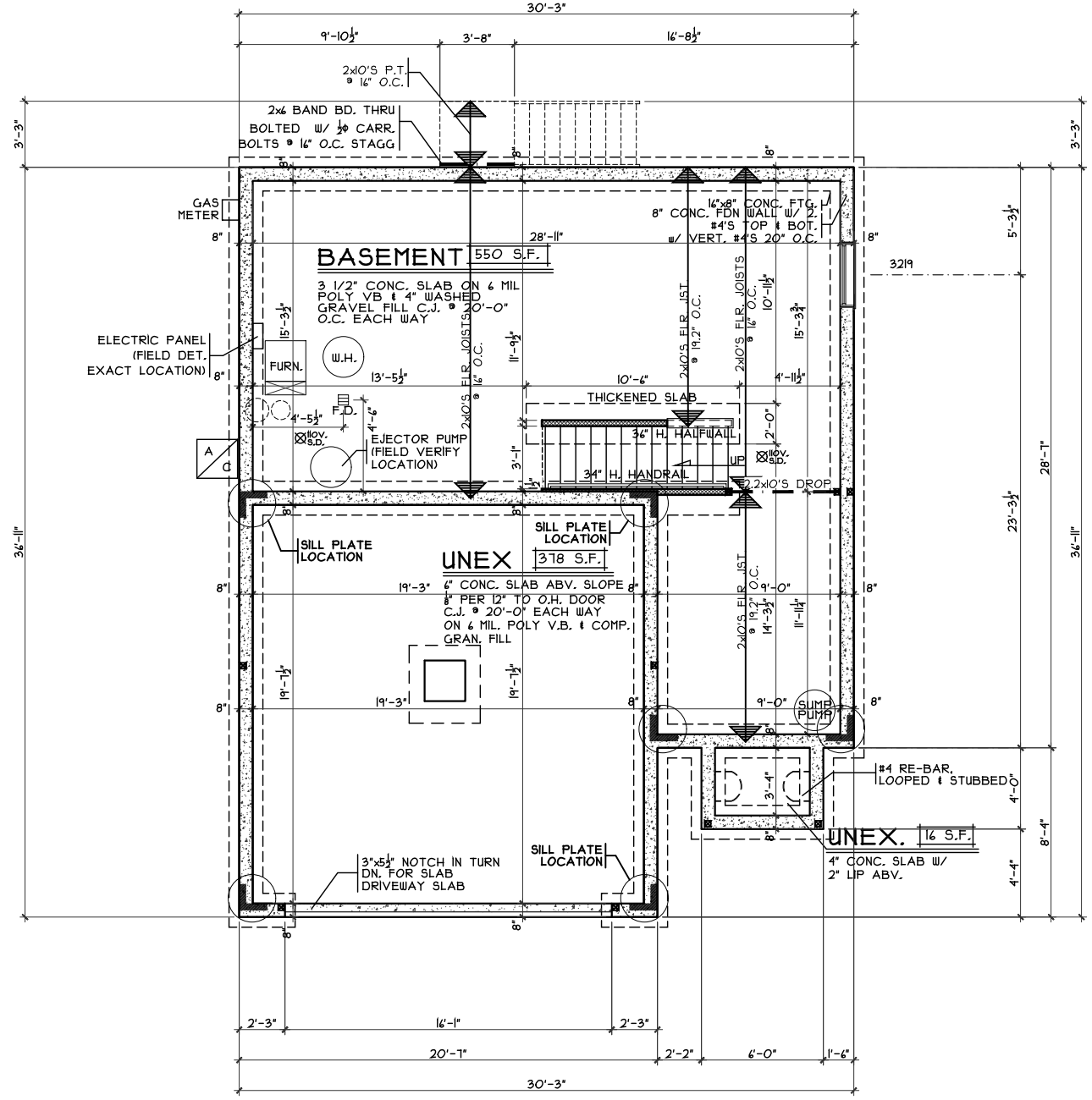
THICKENED SLAB
SCALE: 1/4" = 1'-0"



GRADE BM SECTION
SCALE: 1/8" = 1'-0"



GRADE BM DETAIL
SCALE: 1/8" = 1'-0"



FOUNDATION PLAN
SCALE: 1/8" = 1'-0"

Foundation Plan
Plan: Rental Rowley Basement
Date: 10/23/20
Drawn: KMA
Scale: As Noted
Revised: 3/1/21
Sheet: 3 of 12

Proposed Residence:
Cristo Homes
833 Prescott Circle
Centennial Run 70's Lot #4713

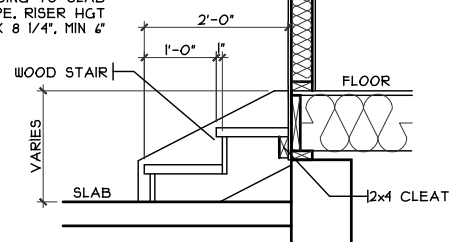
Rowley - B5 - Vinyl
Cristo Homes reserves all property rights in these plans. These plans are not to be reproduced, changed, or copied in any manner. They are not to be given to a third party, either in full or in part, without first receiving written permission from Cristo Homes. In the event these plans are used by a third party, Cristo Homes shall be held harmless.

Trenton
Butler County

CRISTO HOMES
7594-A Tylers Place Blvd.
West Chester, OH 45069
513.755.0570 www.cristohomes.com

A2

RISER HGT VARIES ACCORDING TO SLAB SLOPE. RISER HGT MAX: 8 1/4", MIN: 4"

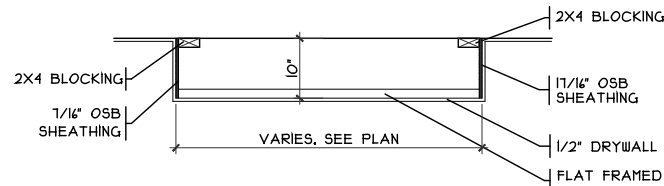
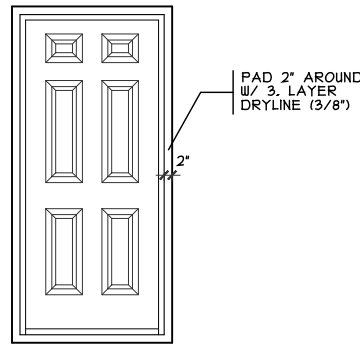


GARAGE STEPS

SCALE: 1/8" = 1'-0"

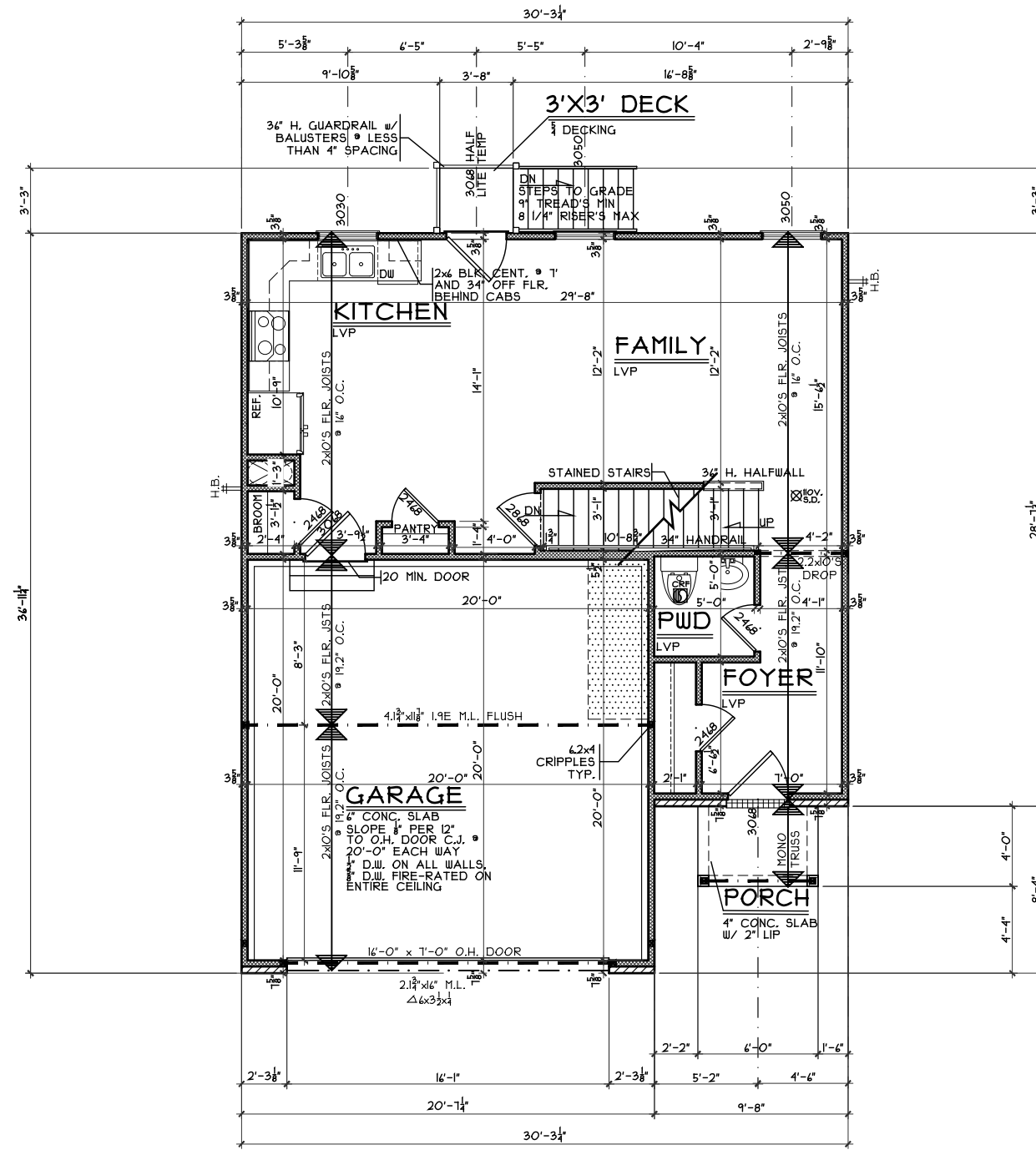
DOOR FRAMING DTL.

SCALE: 1/4" = 1'-0"



DROP CLG. DETAIL

SCALE: 1/8" = 1'-0"



FIRST FLOOR PLAN

SCALE: 1/8" = 1'-0" 46 S.F.

First Floor Plan

Plan: Rental Rowley Basement
Date: 10/23/20
Drawn: KMA
Scale: As Noted
Revised: 3/1/21
Sheet: 4 of 12

C7-4713

Proposed Residence:

Cristo Homes
833 Prescott Circle
Centennial Run 70's Lot #4713



7594-A Tylers Place Blvd.
West Chester, OH 45069
513.755.0570 www.cristohomes.com

Trenton
Butler County

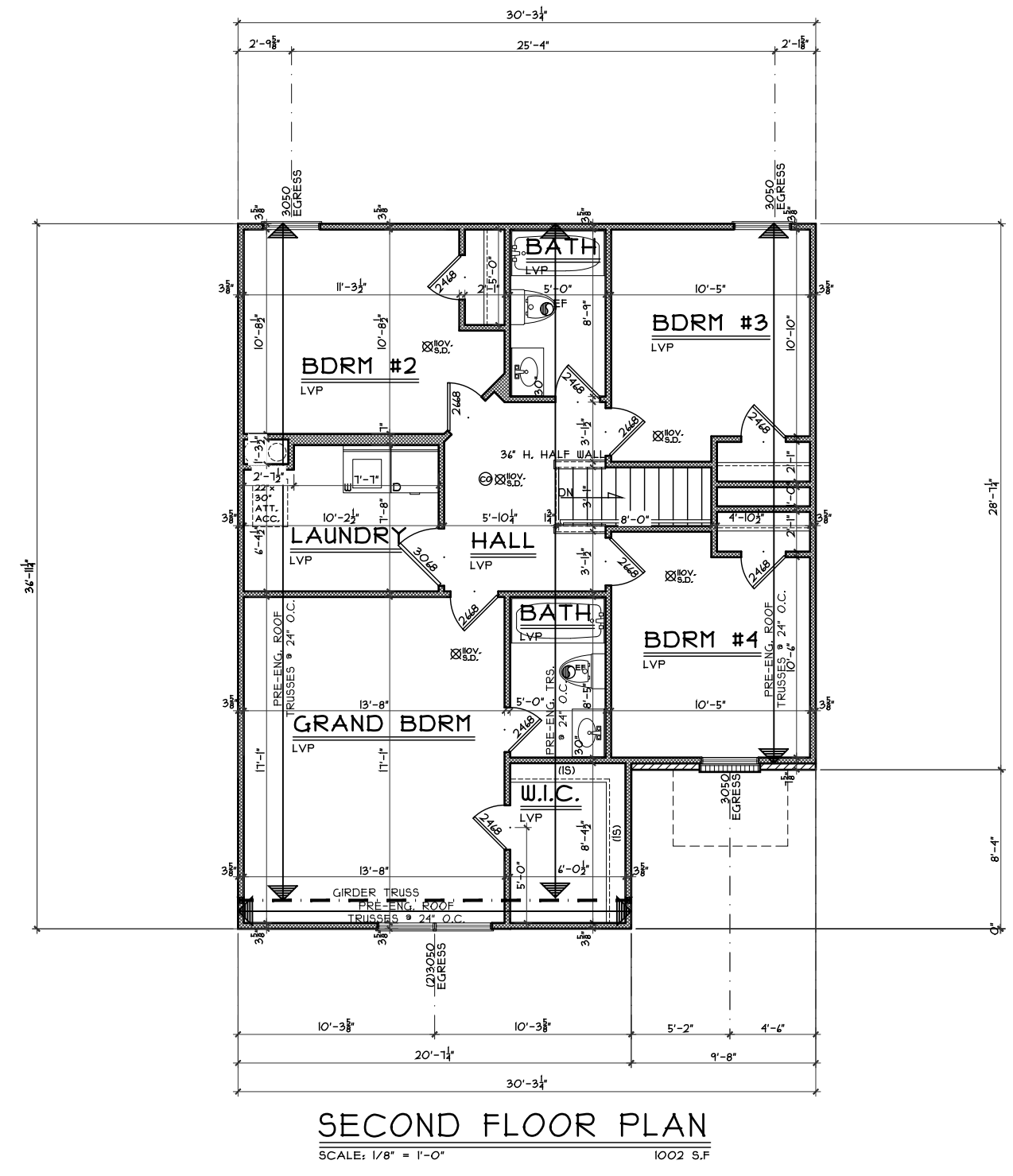
Rowley - B5 - Vinyl

Issue Dates

Table with 2 columns: Issue Dates, Review

Cristo Homes reserves all property rights in these plans. These plans are not to be reproduced, changed, or copied in any manner. They are not to be given to a third party, either in full or in part, without first receiving written permission from Cristo Homes. In the event these plans are used by a third party, Cristo Homes shall be held harmless.

A3



SECOND FLOOR PLAN

SCALE: 1/8" = 1'-0" 1002 S.F

Second Floor Plan
Plan: Rental Rowley Basement
Date : 10/23/20
Drawn: KMA
Scale : As Noted
Revised: 3/1/21
Sheet : 6 of 12



C7-4713
Proposed Residence:
Cristo Homes
833 Prescott Circle
Centennial Run 70's Lot #4713

Rowley - B5 - Vinyl
Cristo Homes reserves all property rights in these plans. These plans are not to be reproduced, changed, or copied in any manner. They are not to be given to a third party, either in full or in part, without first receiving written permission from Cristo Homes. In the event these plans are used by a third party, Cristo Homes shall be held harmless.

Trenton
Butler County

Issue	Dates	Review

A4