

PLOT PLAN

LOT 4732 (12,445 SF) 0.2857 ACRES

CENTENNIAL RUN, SECTION THREE, BLOCK "B"

SECTION 31, TOWN 2, RANGE 4

CITY OF TRENTON, BUTLER COUNTY, OHIO

FOR: CRISTO HOMES

SETBACKS:
 FRONT YARD=35'
 REAR YARD=40'
 SIDE YARD=8' MIN/20' TOTAL

JUST ASK MISSY LLC
 902 DOVER COURT

QUANTITIES

TOTAL LOT AREA	12445	sq. ft.
CITY WALK	270	sq. ft.
HOUSE WALK	49	sq. ft.
DRIVE	656	sq. ft.
APRON	111	sq. ft.
PATIO AND PORCHES	33	sq. ft.
DECK	-	sq. ft.
SEEDING AREA	10999	sq. ft.



APEX IS NOT RESPONSIBLE FOR SOIL CONDITIONS OR GROUND WATER CONDITIONS.

GRADE/SPOT ELEVATIONS, FOUNDATION ELEVATIONS ARE ONLY RECOMMENDATIONS AND MAY VARY DUE TO SITE CONDITIONS.

INFORMATION FROM CONSTRUCTION DRAWINGS.

CONTRACTOR IS TO VERIFY LOCATION AND DEPTH OF WATER AND UTILITY SERVICES BEFORE CONSTRUCTION.

UNLESS F.F.E., M.O.E. OR M.B.E. ARE FIELD VERIFIED BY AN ENGINEERING FIRM, CONTRACTOR TAKES FULL RESPONSIBILITY FOR THE FINISH FLOOR ELEVATION.

A STANDARD FORMULA WAS USED TO DETERMINE FINISH FLOOR GRADE. FINAL FINISH FLOOR ELEVATION IS CONTRACTOR'S RESPONSIBILITY.

ALL ELEVATIONS ARE EXISTING UNLESS SPECIFIED WITH AN "E" FOR EXISTING OR A "P" FOR PROPOSED.

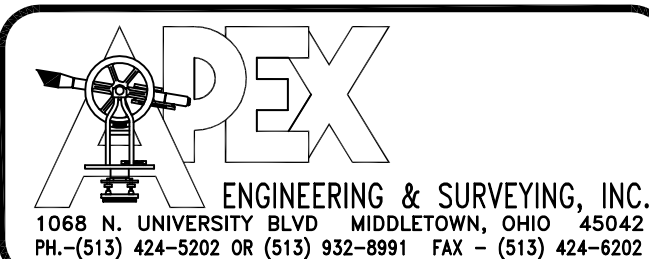
BUILDER SHALL PROVIDE POSITIVE DRAINAGE AROUND AND AWAY FROM HOUSES.

APEX ENGINEERING & SURVEYING INC. ADVISES AGAINST HOLDING THE MINIMUM REQUIRED DISTANCE ON ANY AND ALL SETBACKS, FRONT, REAR, AND SIDES. THE BUILDER ASSUMES ALL RESPONSIBILITIES FOR ANY BUILDING ENCROACHMENTS THAT MAY OCCUR.

TOPOGRAPHY FROM APEX FIELD SURVEY, DATED DEC. 5, 2019, AND MAY NOT REFLECT CURRENT CONDITIONS.

M.O.E.=671.4
 M.S=665.22

SCALE: 1"=20'
 DATE: 09-10-20
 DRAWN: JLL
 DESIGNED:
 CHECKED: KRC

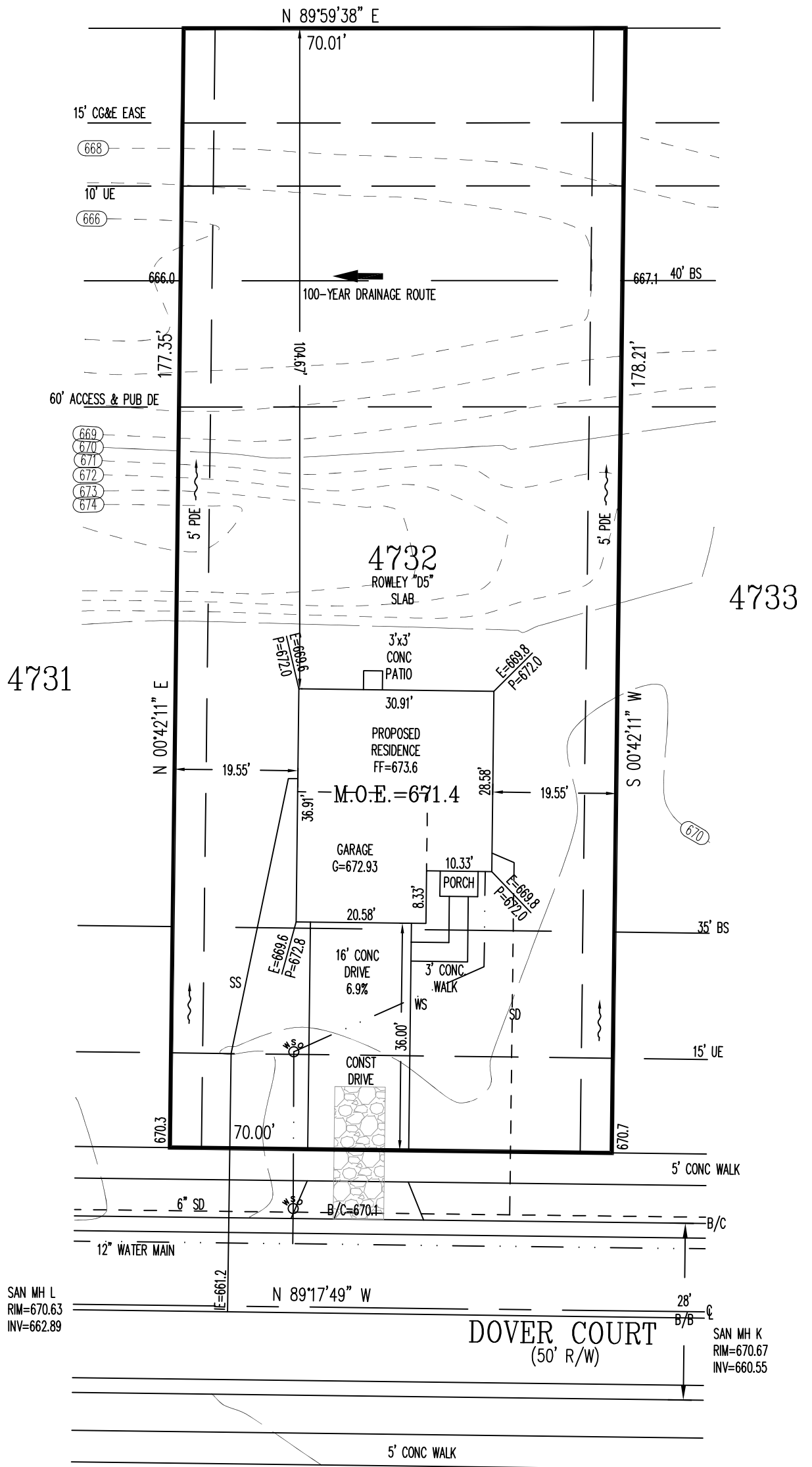


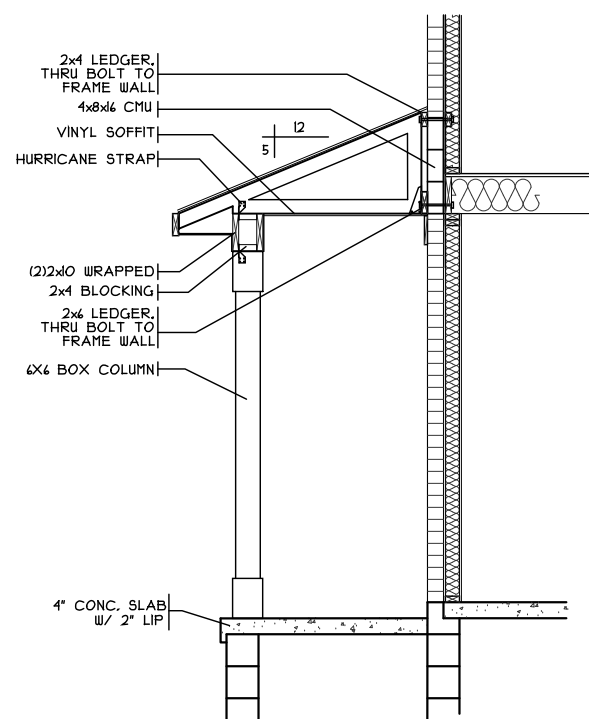
REVISIONS:

- 1.
- 2.
- 3.
- 4.

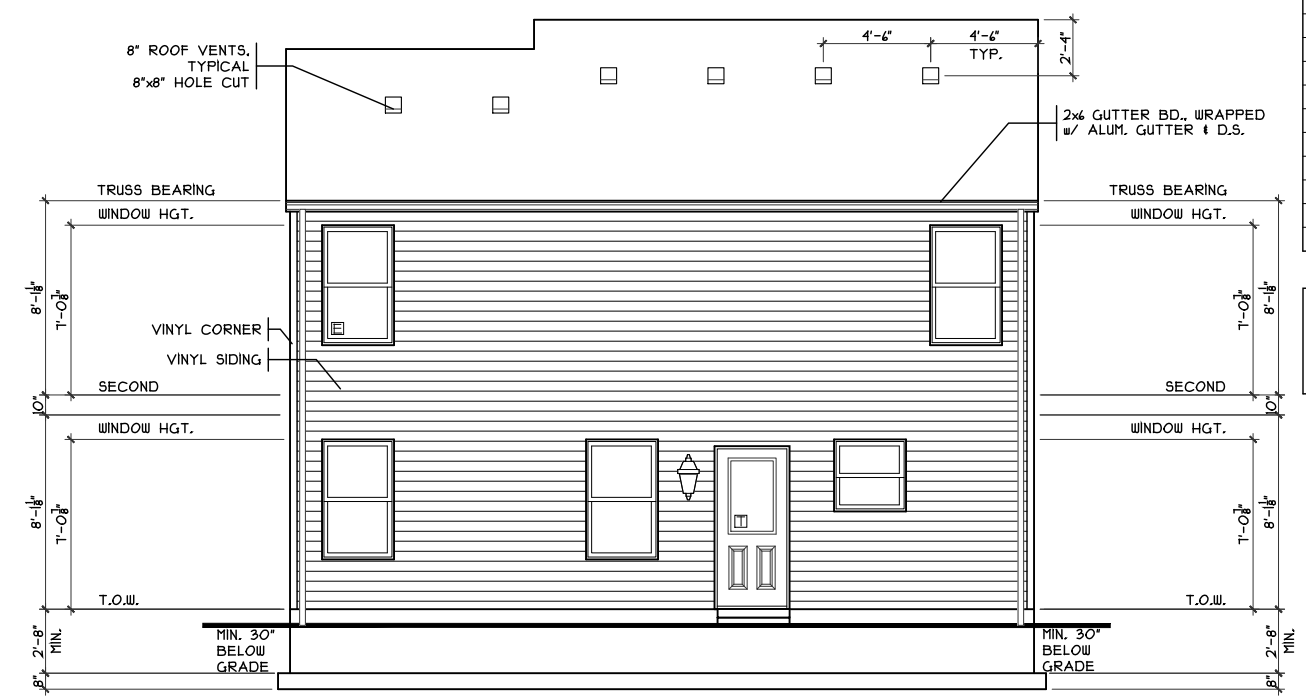
PROJECT: CENTENNIALRUN
 DRAWING: 202059PA

SHEET
 1 OF 1

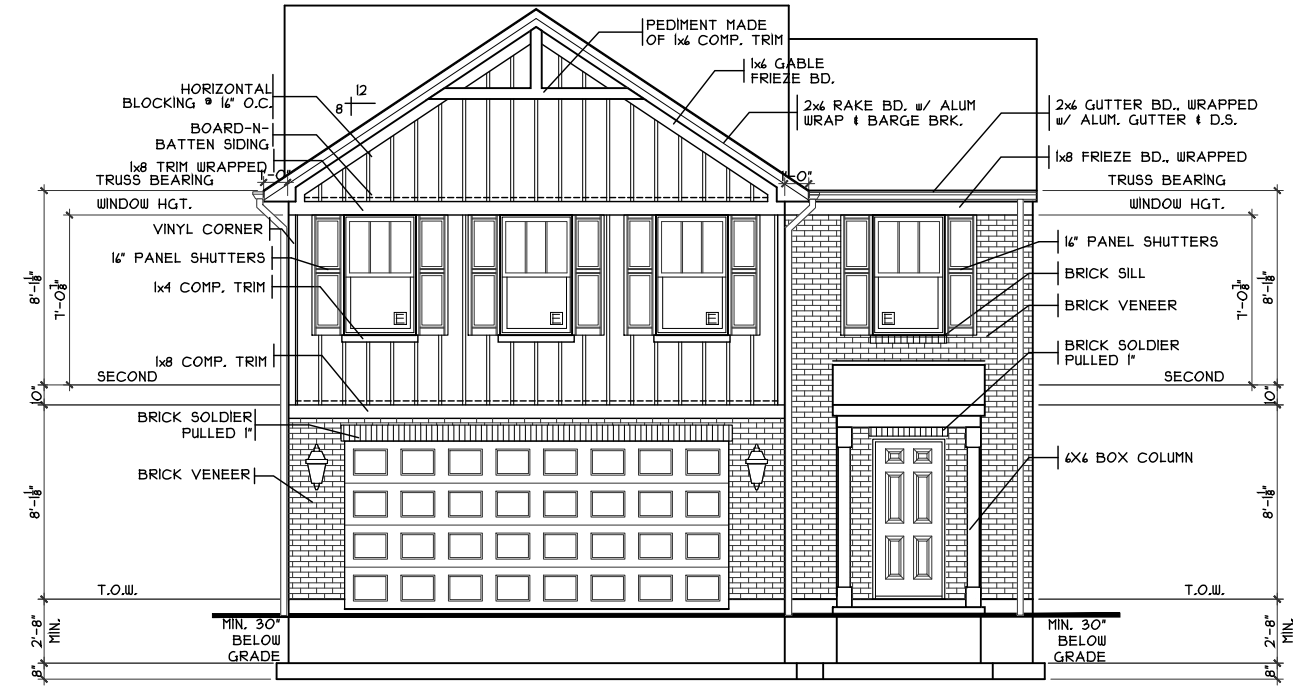




PORCH DETAIL
SCALE: 1/2" = 1'-0"



REAR ELEVATION
SCALE: 1/8" = 1'-0"



FRONT ELEVATION
SCALE: 1/8" = 1'-0"

SHEET INDEX	
SHT#	DESCRIPTION
A1	Front and Rear Elevations
A1a	Left and Right Elevations
A2	Foundation Plan
A3	First Floor Plan
A4	Second Floor Plan
A5	Typical Wall Sections/Stair Section
A6	Typical Framing Details (Aluminum)
G1	General Notes

NOTE:
PLANS PRINTED ON 24x36 SHEETS TO BE SCALABLE AT FULL SCALE. 1/4" = 1'-0"
PLANS PRINTED ON 11x17 SHEETS TO BE SCALABLE AT HALF SCALE. 1/8" = 1'-0"

Rowley Slab - D5- Vinyl

Issue Dates

Cristo Homes reserves all property rights in these plans. These plans are not to be reproduced, changed, or copied in any manner. They are not to be given to a third party, either in full or in part, without first receiving written permission from Cristo Homes. In the event these plans are used by a third party, Cristo Homes shall be held harmless.

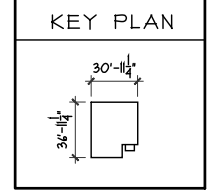
Trenton
Butler County

C7-4732

Proposed Residence:
Just Ask Missy
902 Dover Court
Centennial Run 70's Lot #4723

2S1661B3
PLAN INFO

4	BDRMS
2.5	BATHS
2	CAR GARAGE
8'	1ST FLR. CLG.
SQUARE FOOTAGE	
TOTAL	1441
MAIN	1032
UPPER (SLAB)	561
GARAGE (SLAB)	384



OPTIONS

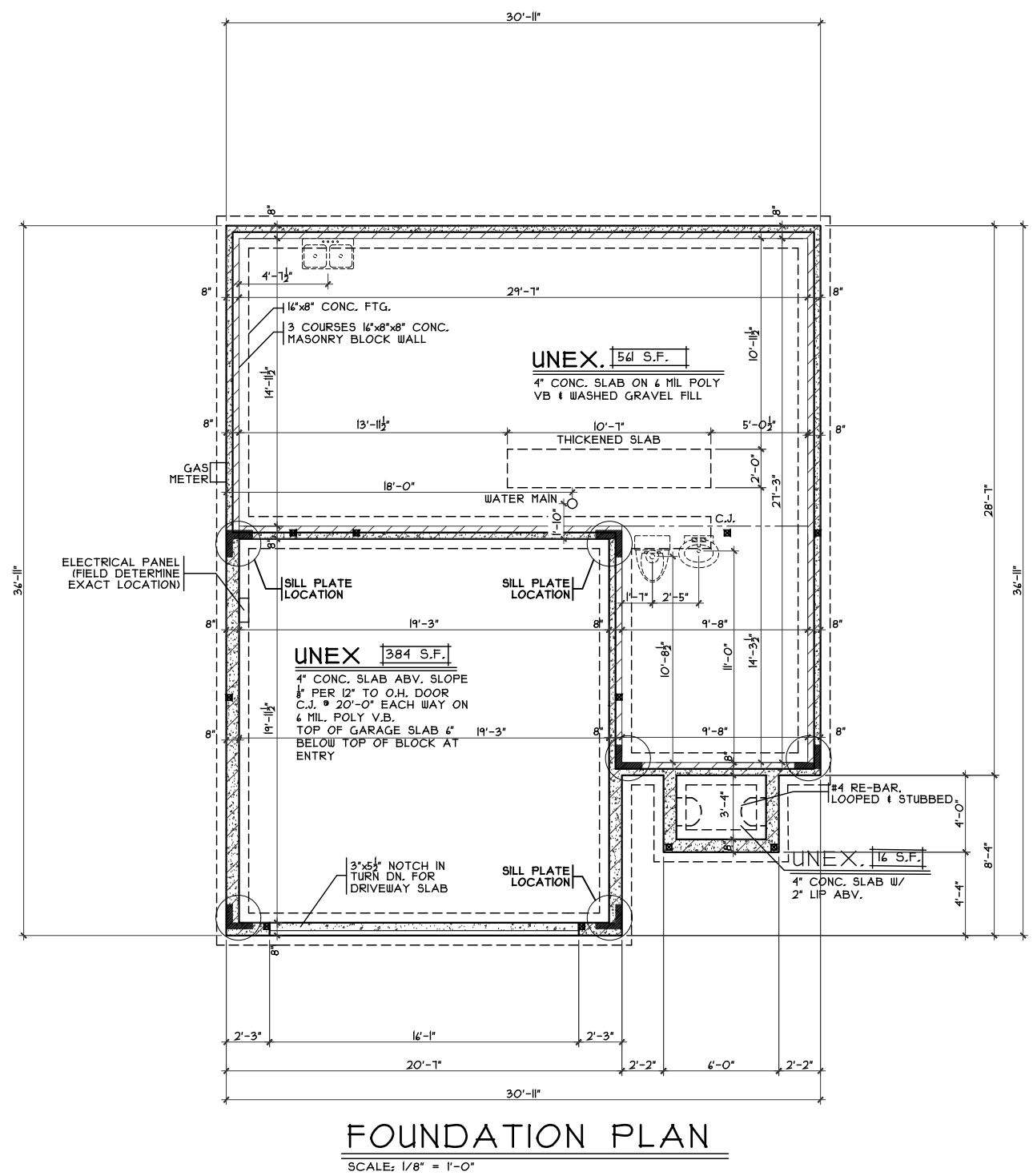
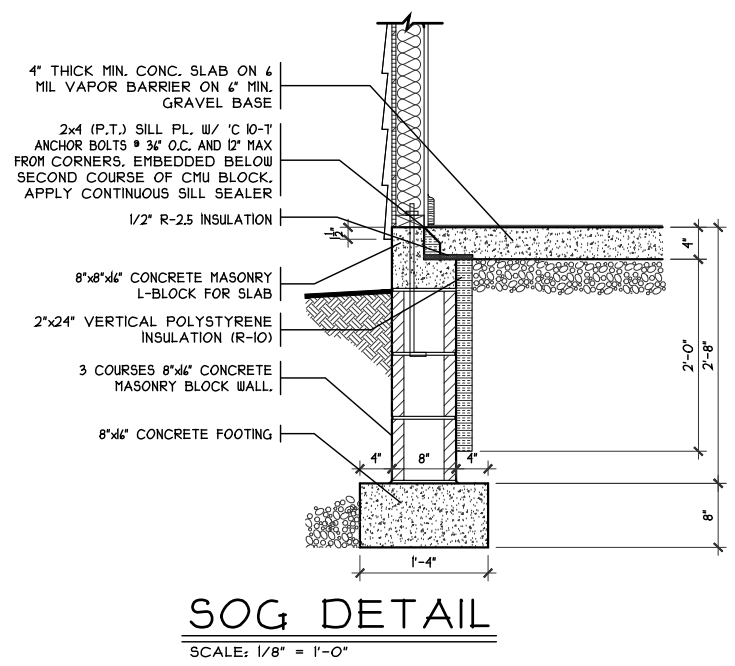
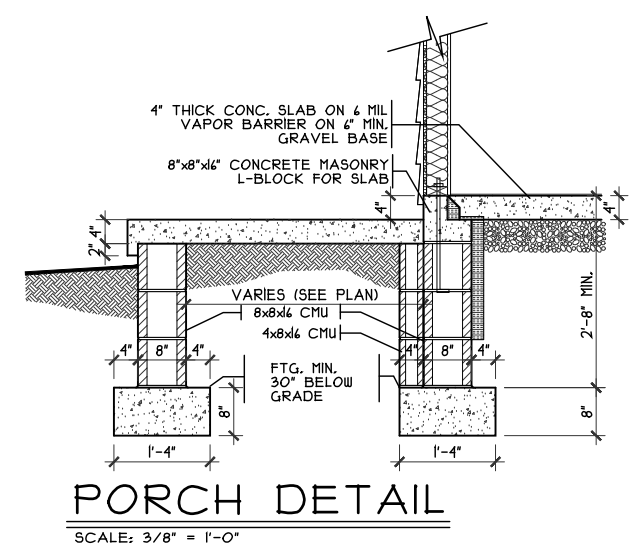
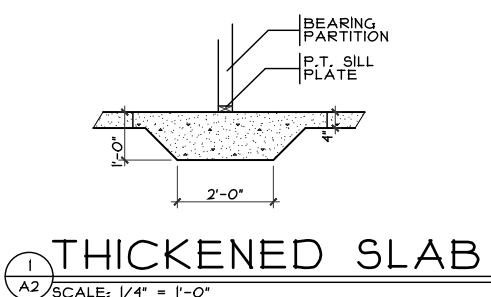


7594-A Tylers Place Blvd.
West Chester, OH 45069
513.795.0570 www.cristohomes.com

Front And Rear Elevations

Plan: Rowley Slab
Date: 8/20/20
Drawn: KMA
Scale: As Noted
Revised: 9/1/20
Sheet: 1 of 11

A1



OPTIONS

Foundation Plan
Plan: Rowley Slab
Date: 8/20/20
Drawn: KMA
Scale: As Noted
Revised: 9/1/20
Sheet: 6 of 11

Proposed Residence:
Just Ask Missy
902 Dover Court
Centennial Run 70's Lot #4723

CRISTO HOMES
7594-A Tylers Place Blvd.
West Chester, OH 45069
513.755.0570 www.cristohomes.com

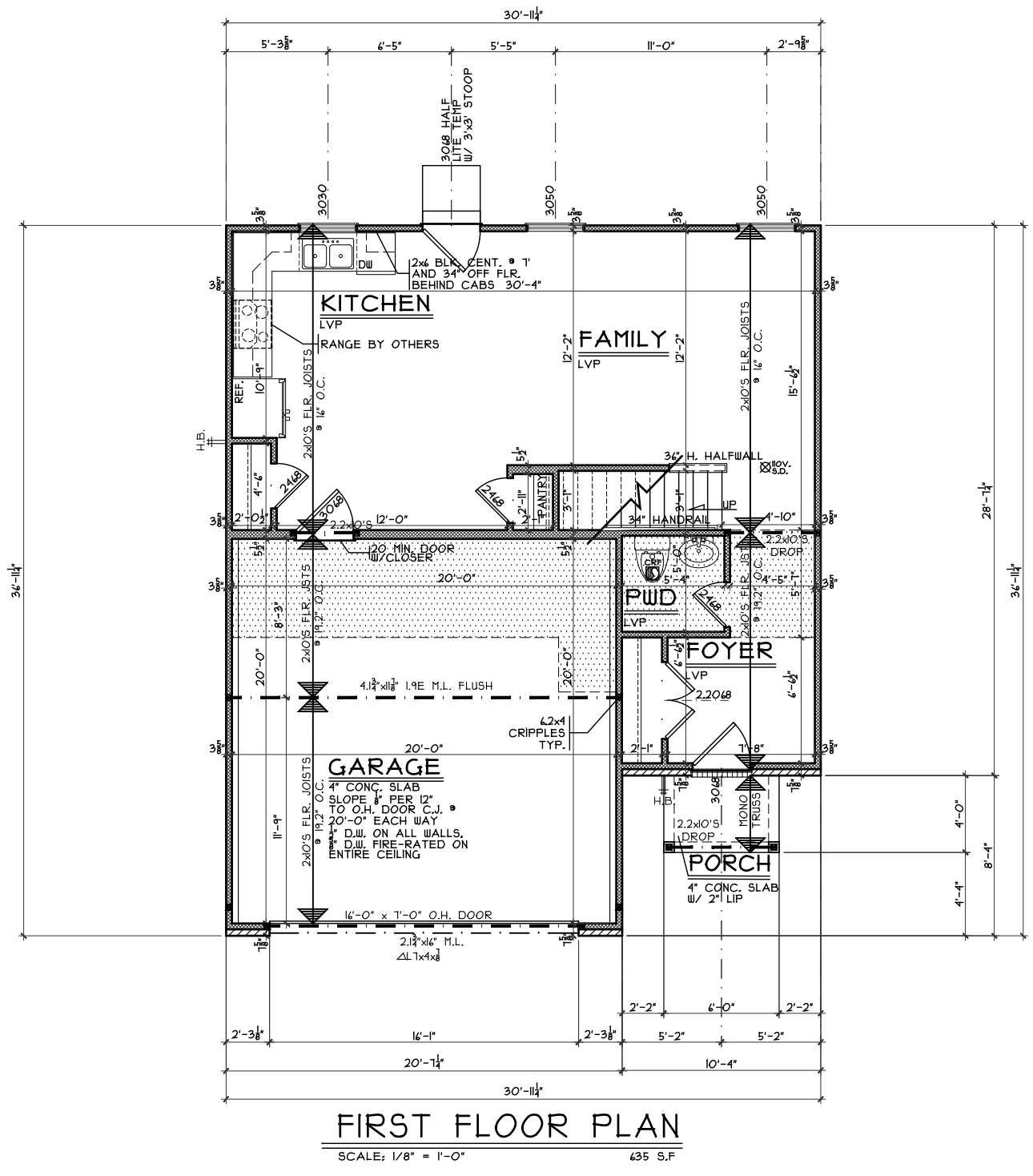
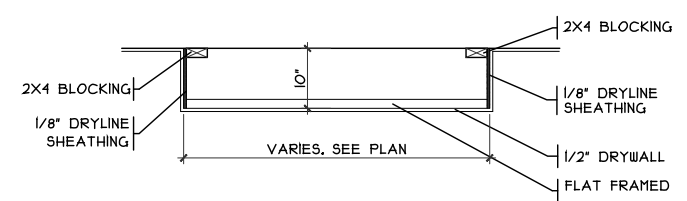
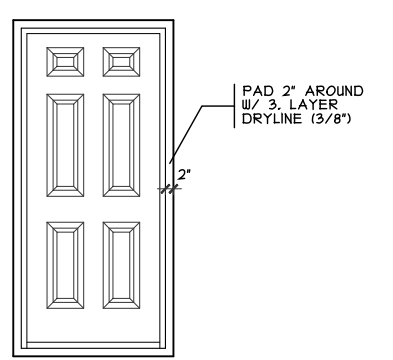
Rowley Slab - D5 - Vinyl
Cristo Homes reserves all property rights in these plans. These plans are not to be reproduced, changed, or copied in any manner. They are not to be given to a third party, either in full or in part, without first receiving written permission from Cristo Homes. In the event these plans are used by a third party, Cristo Homes shall be held harmless.

Trenton
Butler County

Issue Dates

Review	

A2



OPTIONS

First Floor Plan
Plan: Rowley Slab
Date: 8/20/20
Drawn: KMA
Scale: As Noted
Revised: 9/1/20
Sheet: 7 of 11

Proposed Residence:
Just Ask Missy
902 Dover Court
Centennial Run 70's Lot #4723

CRISTO HOMES
7594-A Tylers Place Blvd.
West Chester, OH 45069
513.795.0570 www.cristohomes.com

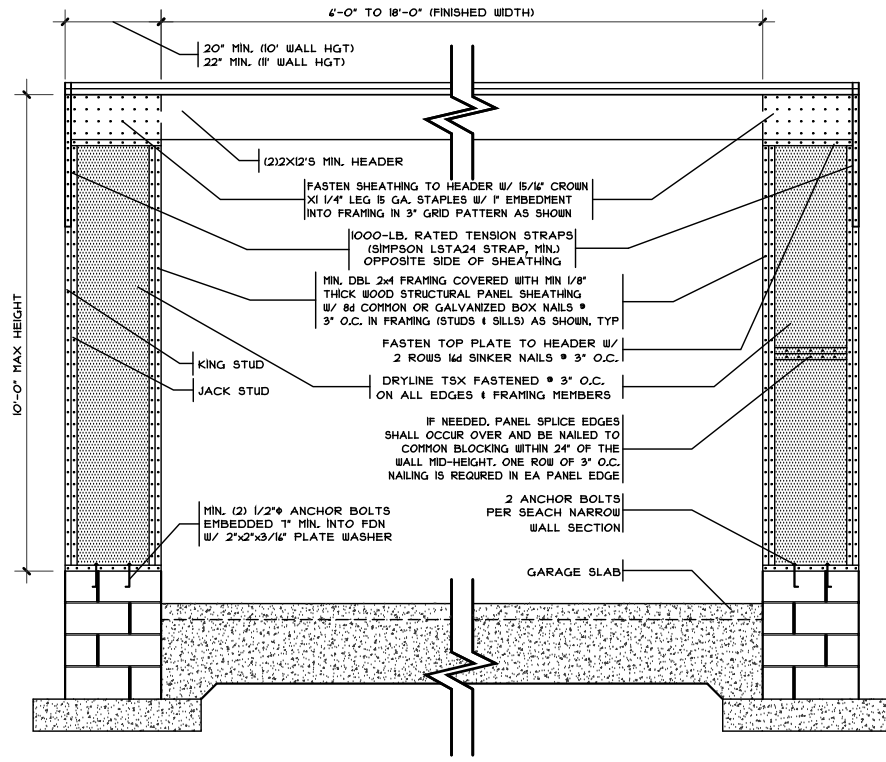
Rowley Slab - D5- Vinyl
Cristo Homes reserves all property rights in these plans. These plans are not to be reproduced, changed, or copied in any manner. They are not to be given to a third party, either in full or in part, without first receiving written permission from Cristo Homes. In the event these plans are used by a third party, Cristo Homes shall be held harmless.

Issue Dates

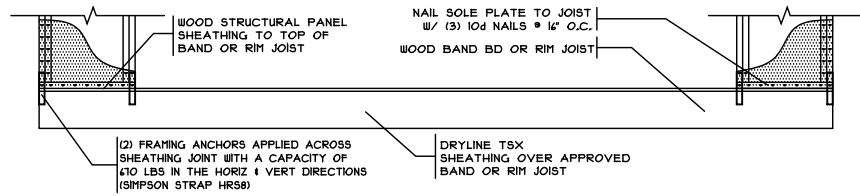
Review	

Trenton Butler County

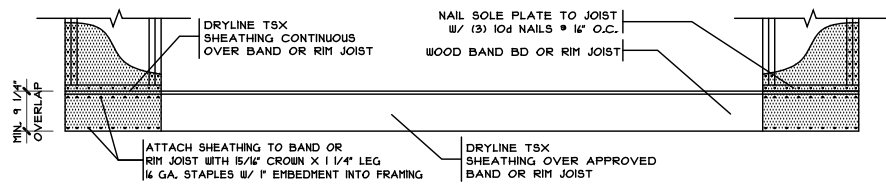
A3



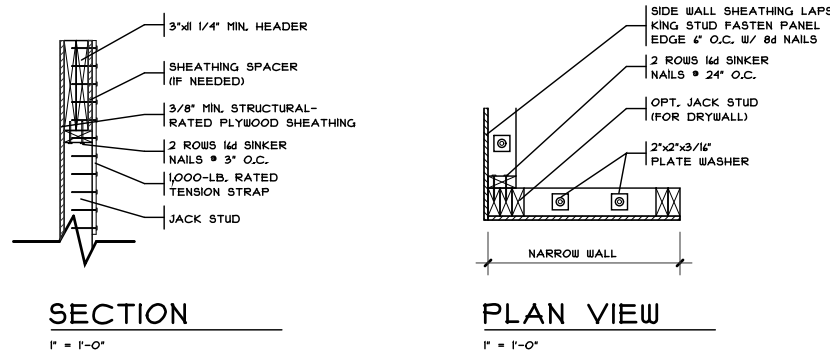
WALL OVER POURED FOUNDATION
SCALE: 1/4" = 1'-0"



WALL OVER RAISED WOOD FLOOR
SCALE: 1/4" = 1'-0"
FRAMING ANCHOR OPTION



WALL OVER RAISED WOOD FLOOR
SCALE: 1/4" = 1'-0"
OVERLAP OPTION



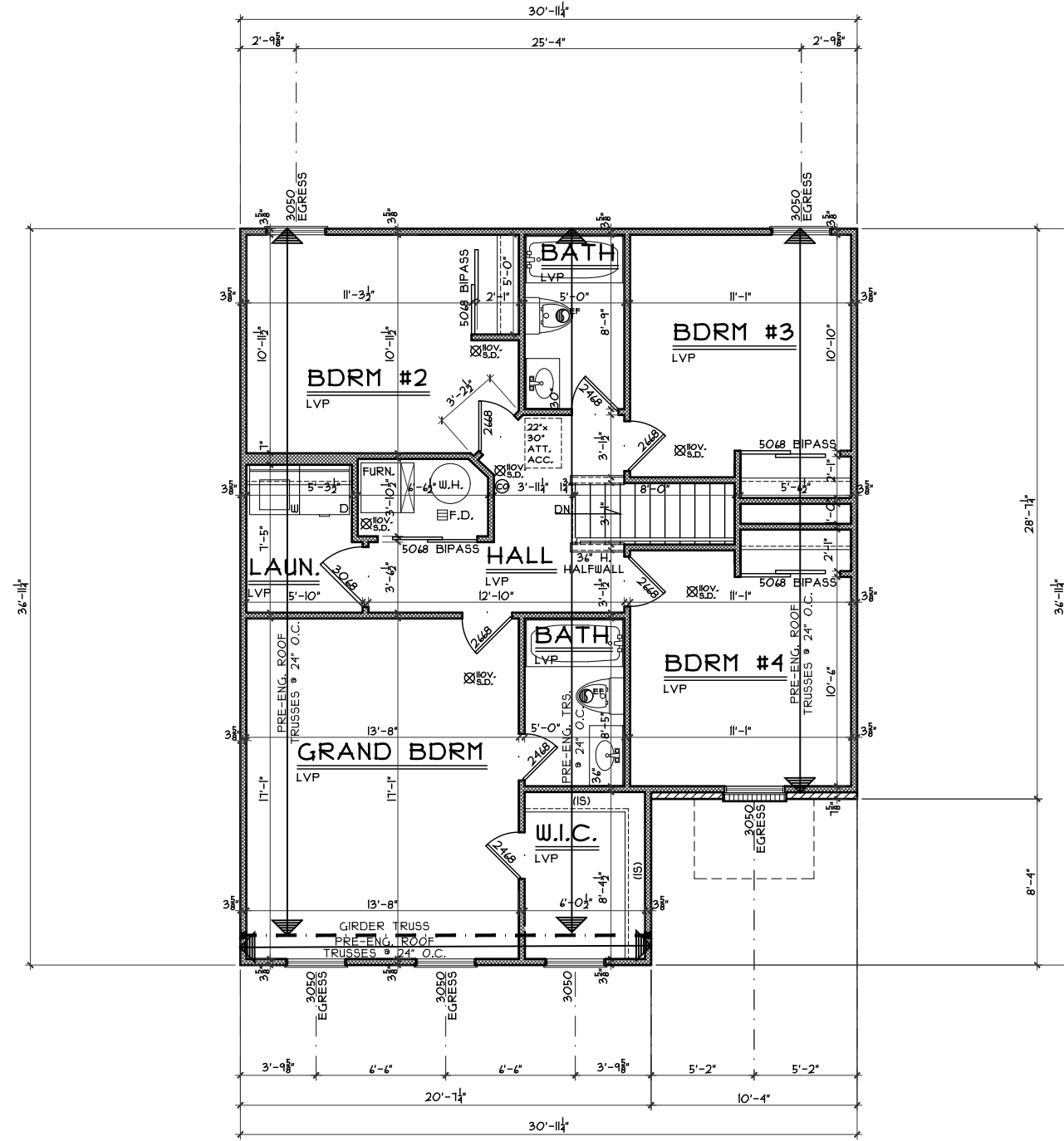
SECTION
1" = 1'-0"

PLAN VIEW
1" = 1'-0"

METHOD CS-PF
CONTINUOUSLY SHEATHED PORTAL FRAME PANEL CONSTRUCTION

SCALE PER DETAIL

SLAB FDN



SECOND FLOOR PLAN
SCALE: 1/8" = 1'-0" 1032 S.F

OPTIONS

Second Floor Plan

Plan: Rowley Slab
Date: 8/20/20
Drawn: KMA
Scale: As Noted
Revised: 9/1/20
Sheet: 9 of 11

C7-4732

Proposed Residence:
Just Ask Missy
902 Dover Court
Centennial Run 70's Lot #4723



7594-A Tylers Place Blvd.
West Chester, OH 45069
513.755.0570 www.cristohomes.com

Trenton
Butler County

Rowley Slab - D5 - Vinyl

Issue Dates

Review	Issue Dates

Cristo Homes reserves all property rights in these plans. These plans are not to be reproduced, changed, or copied in any manner. They are not to be given to a third party, either in full or in part, without first receiving written permission from Cristo Homes. In the event these plans are used by a third party, Cristo Homes shall be held harmless.

A4