

LEGEND

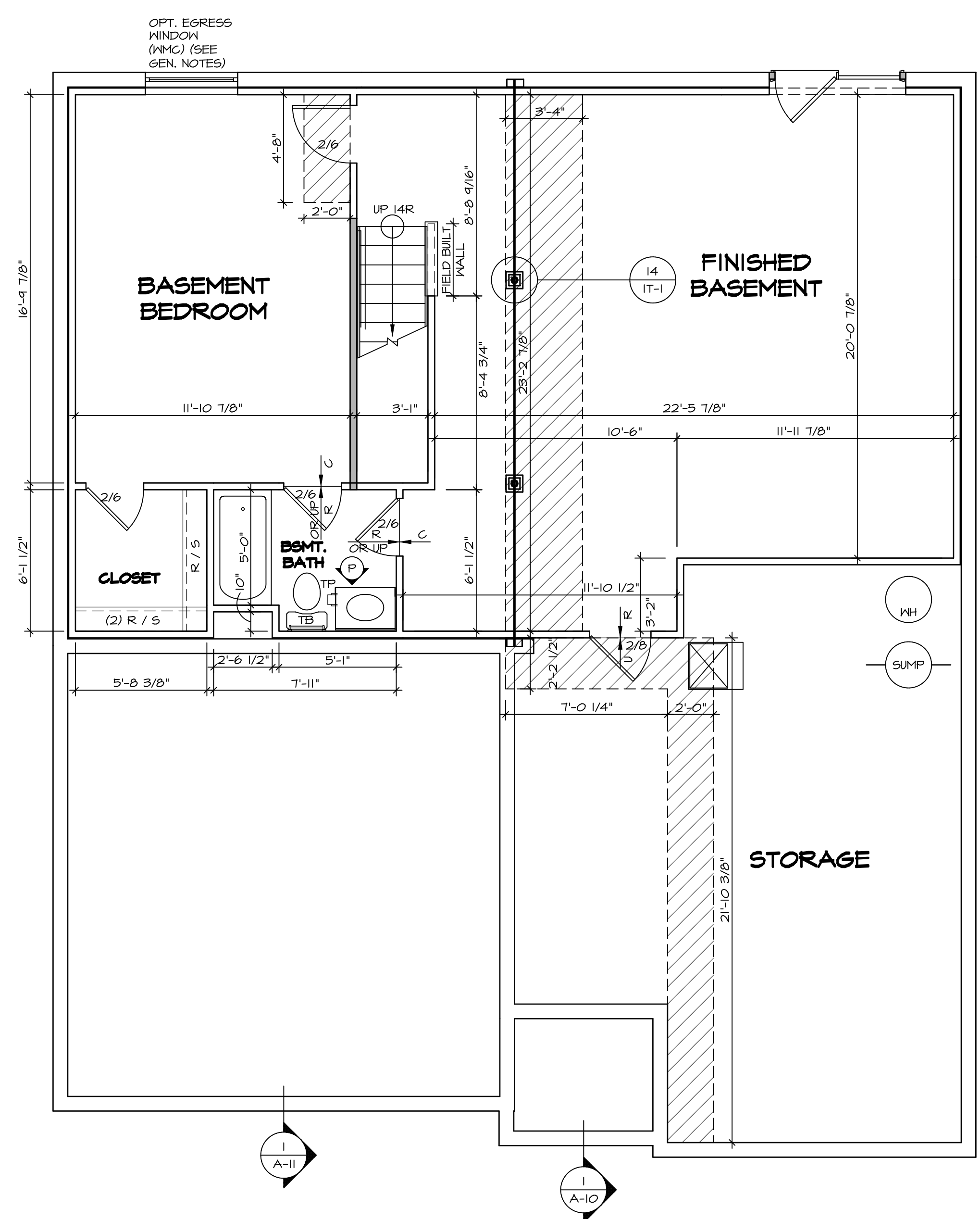
	BEARING WALL
	NON BEARING WALL
	INDICATES BEARING FROM POINT-LOAD ABOVE
	JACKS
	BEAM/HEADER
	PAD FOOTING
	STEEL COLUMN
	PORTAL FRAME
	JOIST/TRUSS
	LVL
	ENGINEERING PAGE NUMBER

SEE FC DETAILS FOR FRAMING CONNECTORS

- FLOOR PLAN NOTES**
1. ALL HEADERS ARE (2) 2x6 w/ 2x4 WALLS OR (3) 2x6 w/ 2x6 WALLS, UNLESS OTHERWISE NOTED.
 2. ALL HEADERS TO HAVE (1) 2x4 OR 2x6 JACK EACH END, UNLESS OTHERWISE NOTED.
 3. ALL EXTERIOR WALLS TO BE 4" AND ALL INTERIOR WALLS TO BE 3 1/2", UNLESS OTHERWISE NOTED.
 4. HATCHED AREAS INDICATE DROPPED CEILING. ALL DROPPED CEILING ARE 12" UNLESS OTHERWISE NOTED.
 5. SEE "BRACED WALL PANEL DETAIL SHEET" FOR SPECIAL WALL FRAMING LOCATIONS AND HEADER SIZES, IF APPLICABLE.
 6. SEE STANDARD DETAIL CATEGORY "11" SHEET(S) FOR INTERIOR TRIM DETAILS.
 7. SEE ARCHITECTURAL DETAIL SHEET "AD" FOR HOUSE SPECIFIC INTERIOR TRIM OPTION TABLE.
 8. ALL WINDOWS HAVE 1'-0" 1/2" HEADER HEIGHT UNLESS OTHERWISE NOTED.

- GYPSTUM NOTES**
- AT GARAGE:**
 GYPSTUM BOARD AT COMMON WALLS, CEILING, BEAM WRAPS AND SUPPORTS PER STANDARD DETAIL FA-1(b) FIRE ASSEMBLIES OR AS REQUIRED BY LOCAL CODE.
- AT STAIRS:**
 1/2" GYPSTUM BOARD AT UNDERSIDE OF STAIRS AND WALLS IN CLOSET
- BASEMENT WITH I-JOIST FLOOR SYSTEM ABOVE:**
 WITH OPTION "SC1" - DRYWALL UNFINISHED BASEMENT CEILING AREA

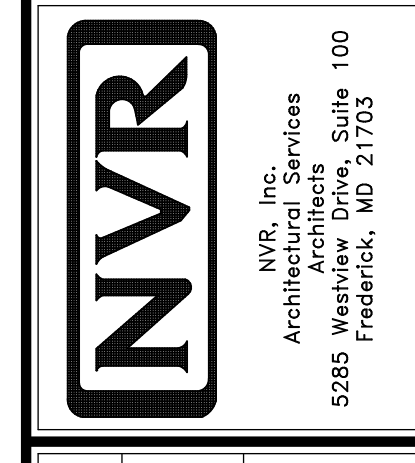
- NOTES:**
- 1/2" GYPSTUM WALL BOARD REQUIRED ON CEILING IN UNFINISHED AREAS WHEN NO SPRINKLER SYSTEM IS INSTALLED.
 - A MAXIMUM AREA OF 80 SQ FT MAY BE OMITTED AS NEEDED FOR INSTALLATION OF PLUMBING, ELECTRICAL, AND/OR HVAC (TYPICALLY AN 8'-0"x8'-0" CEILING SPACE ABOVE MECHANICAL AREA).
 - PROVIDE FIRE BLOCKING AS REQUIRED AT PERIMETER OF ANY AREAS WHERE DRYWALL HAS BEEN OMITTED.



BASEMENT FLOOR PLAN
 SCALE: 1/4" = 1'-0"

SHEET NO. A-6	MODEL PISA TORRE	SET NO. PSTCO VERSION O2	DRAWING TITLE BASEMENT FLOOR PLAN
OPTION DESCRIPTION 34	DATE: OPTION	DRAWN BY	DRAWING DATE: OPTION

NVR, Inc., owner, expressly disclaims all copyright interest in the common law plans. These plans are not to be reproduced, changed, copied in any way, or otherwise used without the written consent of NVR, Inc.



FIRST FLOOR JACK SCHEDULE				
IDENTIFIER	DESCRIPTION	OPTIONS	ENG. NUM.	REMARKS
J01	JACK - (2) 2X4 SPF STUD GRADE		1051 / 1050	
J02	JACK - (2) 2X4 SPF STUD GRADE		1051 / 1050	
J03	JACK - (5) 2X4 SP#1	SXC	1051	STEEL PLATE
J04	JACK - (5) 2X4 SP#1	SXC	1051	STEEL PLATE
J05	JACK - (2) 2X4 SPF STUD GRADE	ZCC / SXC	1062	
J06	JACK - (2) 2X4 SPF STUD GRADE	ZCC / SXC	1062	
J15	JACK - (2) 2X4 SPF STUD GRADE	D6T / ZCC / SXC	1034	
J16	JACK - (2) 2X4 SPF STUD GRADE	D6T / ZCC / SXC	1034	
J67	JACK - (3) 2X4 SPF STUD GRADE	GCB / ZCC	1006	
J68	JACK - (3) 2X4 SPF STUD GRADE	GCB / ZCC	1006	

LEGEND	
	BEARING WALL
	NON BEARING WALL
	INDICATES BEARING FROM POINT-LOAD ABOVE
	JACKS
	BEAM/HEADER
	PAD FOOTING
	STEEL COLUMN
	PORTAL FRAME
	JOIST/TRUSS
	LVL
	ENGINEERING PAGE NUMBER

SEE FC DETAILS FOR FRAMING CONNECTORS

FIELD INSTALLED FIRST FLOOR BEAM/HEADER SCHEDULE					
IDENTIFIER	DESCRIPTION	LENGTH	OPTIONS	ENG. NUM.	REMARKS
PFOI-2	LVL - 14	14'-4"	GCB / ZCC	1006	2 PLY, 2A

LVL PLY TO PLY FASTENING SCHEDULE:

1A - (2) PLY UP TO AND INCLUDING 11 7/8" TALL; FASTEN PLYS W/ (2) ROWS 16D NAILS AT 12" O.C.
 2A - (2) PLY 14" TO AND 18" TALL (INCLUSIVE); FASTEN PLYS W/ (3) ROWS 16D NAILS AT 12" O.C.
 3A - (2) PLY 20" TALL AND OVER; FASTEN PLYS W/ (4) ROWS 16D NAILS AT 12" O.C.
 4A - (3) PLY UP TO AND INCLUDING 11 7/8" TALL; FASTEN PLYS W/ (2) ROWS 16D NAILS AT 12" O.C. FROM EACH SIDE
 5A - (3) PLY 14" TO AND 18" TALL (INCLUSIVE); FASTEN PLYS W/ (3) ROWS 16D NAILS AT 12" O.C. FROM EACH SIDE
 6A - (3) PLY 20" TALL AND OVER; FASTEN PLYS W/ (4) ROWS 16D NAILS AT 12" O.C. FROM EACH SIDE

FLOOR PLAN NOTES

- ALL HEADERS ARE (2) 2x6 W/ 2x4 WALLS OR (3) 2x6 W/ 2x6 WALLS, UNLESS OTHERWISE NOTED.
- ALL HEADERS TO HAVE (1) 2x4 OR 2x6 JACK EACH END, UNLESS OTHERWISE NOTED.
- ALL EXTERIOR WALLS TO BE 4" AND ALL INTERIOR WALLS TO BE 3 1/2", UNLESS OTHERWISE NOTED.
- HATCHED AREAS INDICATE DROPPED CEILING. ALL DROPPED CEILING ARE 12" UNLESS OTHERWISE NOTED.
- SEE "BRACED WALL PANEL DETAIL SHEET" FOR SPECIAL WALL FRAMING LOCATIONS AND HEADER SIZES, IF APPLICABLE.
- SEE STANDARD DETAIL CATEGORY "IT" SHEET(S) FOR INTERIOR TRIM DETAILS.
- SEE ARCHITECTURAL DETAIL SHEET "AD" FOR HOUSE SPECIFIC INTERIOR TRIM OPTION TABLE.
- ALL WINDOWS HAVE T-O 1/2" HEADER HEIGHT UNLESS OTHERWISE NOTED.

GYPSUM NOTES

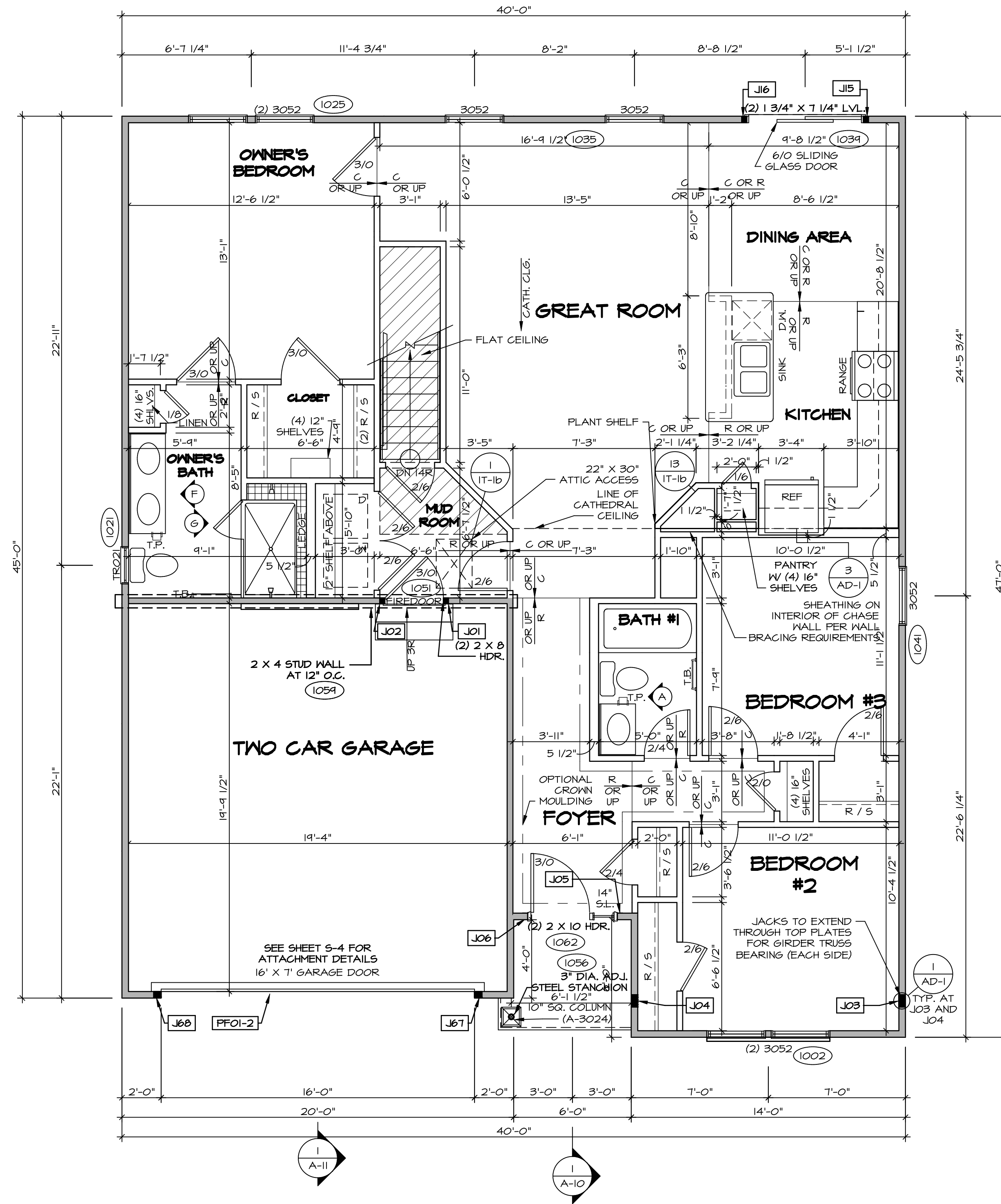
AT GARAGE:
 GYPSUM BOARD AT COMMON WALLS, CEILING, BEAM WRAPS AND SUPPORTS PER STANDARD DETAIL FA-1(b) FIRE ASSEMBLIES OR AS REQUIRED BY LOCAL CODE.

AT STAIRS:
 1/2" GYPSUM BOARD AT UNDERSIDE OF STAIRS AND WALLS IN CLOSET

BASEMENT WITH I-JOIST FLOOR SYSTEM ABOVE:
 WITH OPTION "SCI" - DRYWALL UNFINISHED BASEMENT CEILING AREA

NOTES:

- 1/2" GYPSUM WALL BOARD REQUIRED ON CEILING IN UNFINISHED AREAS WHEN NO SPRINKLER SYSTEM IS INSTALLED
- A MAXIMUM AREA OF 80 SQ FT MAY BE OMITTED AS NEEDED FOR INSTALLATION OF PLUMBING, ELECTRICAL, AND/OR HVAC (TYPICALLY AN 8'-0"X8'-0" CEILING SPACE ABOVE MECHANICAL AREA).
- PROVIDE FIRE BLOCKING AS REQUIRED AT PERIMETER OF ANY AREAS WHERE DRYWALL HAS BEEN OMITTED.



FIRST FLOOR PLAN
 SCALE: 1/4" = 1'-0"

MODEL	PISA TORRE	SET NO.	PS100
DRAWING TITLE	FIRST FLOOR PLAN	VERSION	02
DRAWN BY		DATE:	
OPTION DESCRIPTION	CORNERSTONE SPECIFICATIONS	OPTION	
SHEET NO.	A-7		
			36

REVISIONS:

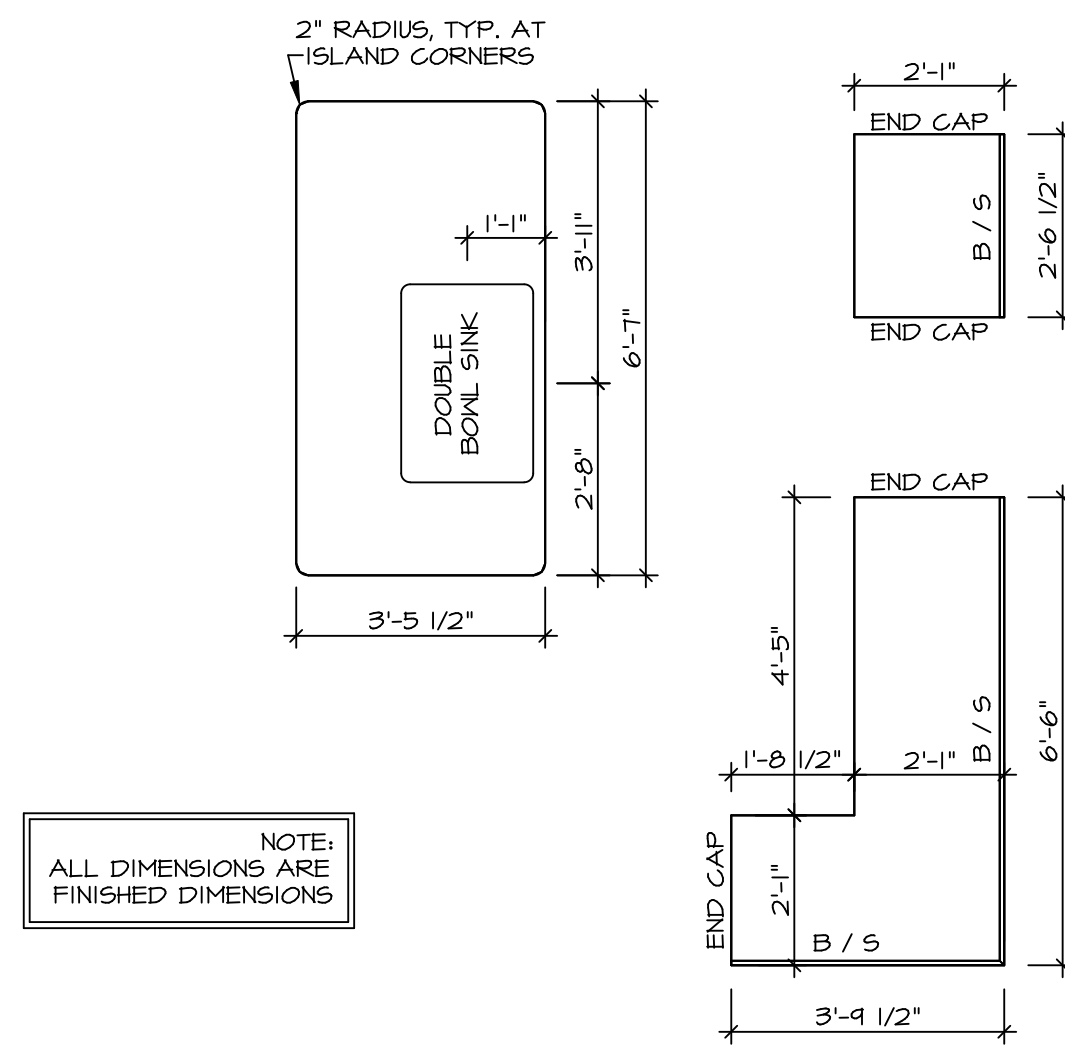
REV. NO.	DATE	DESCRIPTION
1	08/01/16	TH - DRAWING ALIGNMENT

REMARKS:

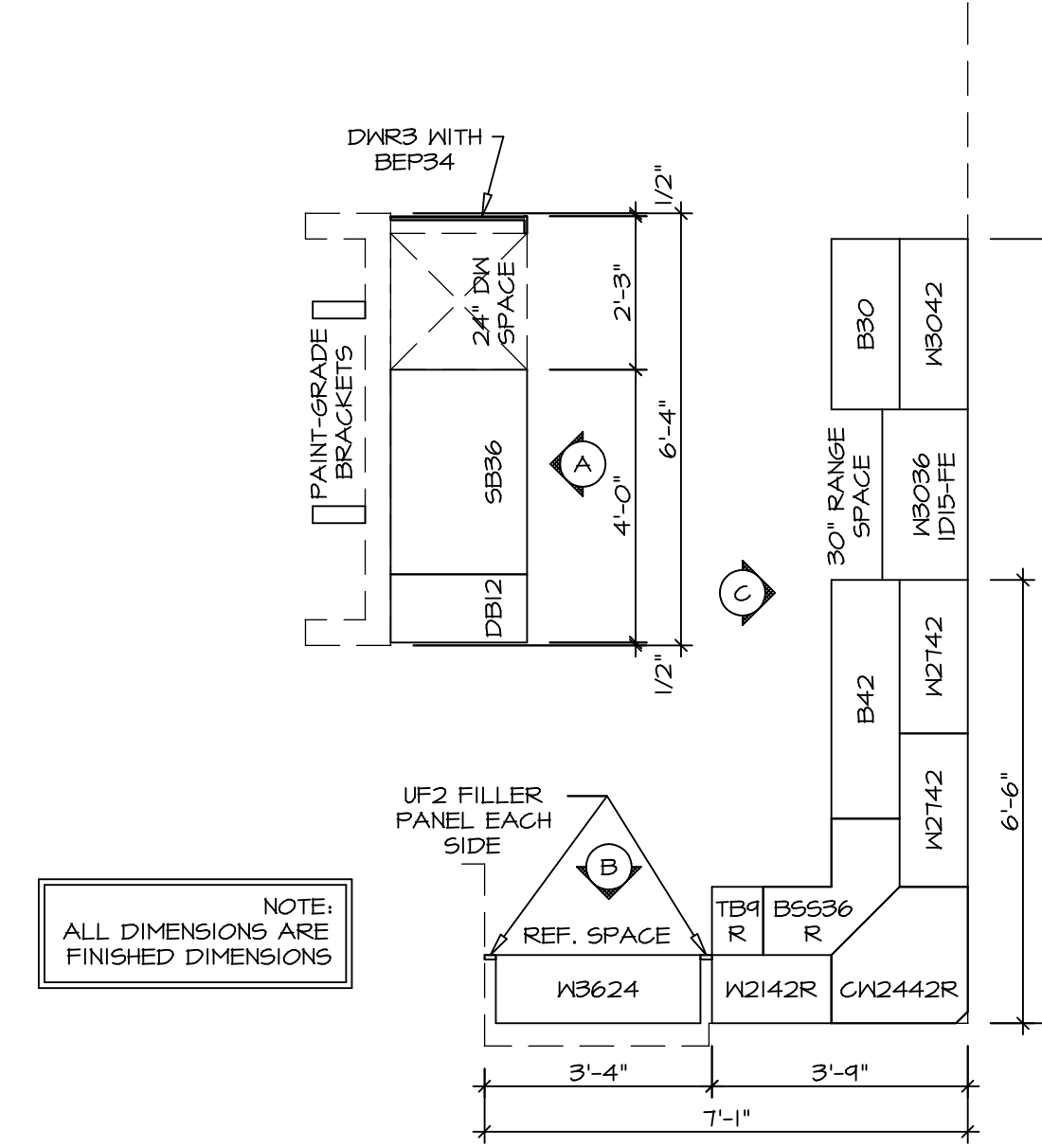
NVR, Inc., owner, expressly reserves its copyright in the common law plans. These plans are not to be reproduced, changed, or copied in any way without the written consent of NVR, Inc.

NVR
 NVR, Inc.
 Architectural Services
 Architects
 Suite 100
 5285 West...
 Frederick, MD 21703

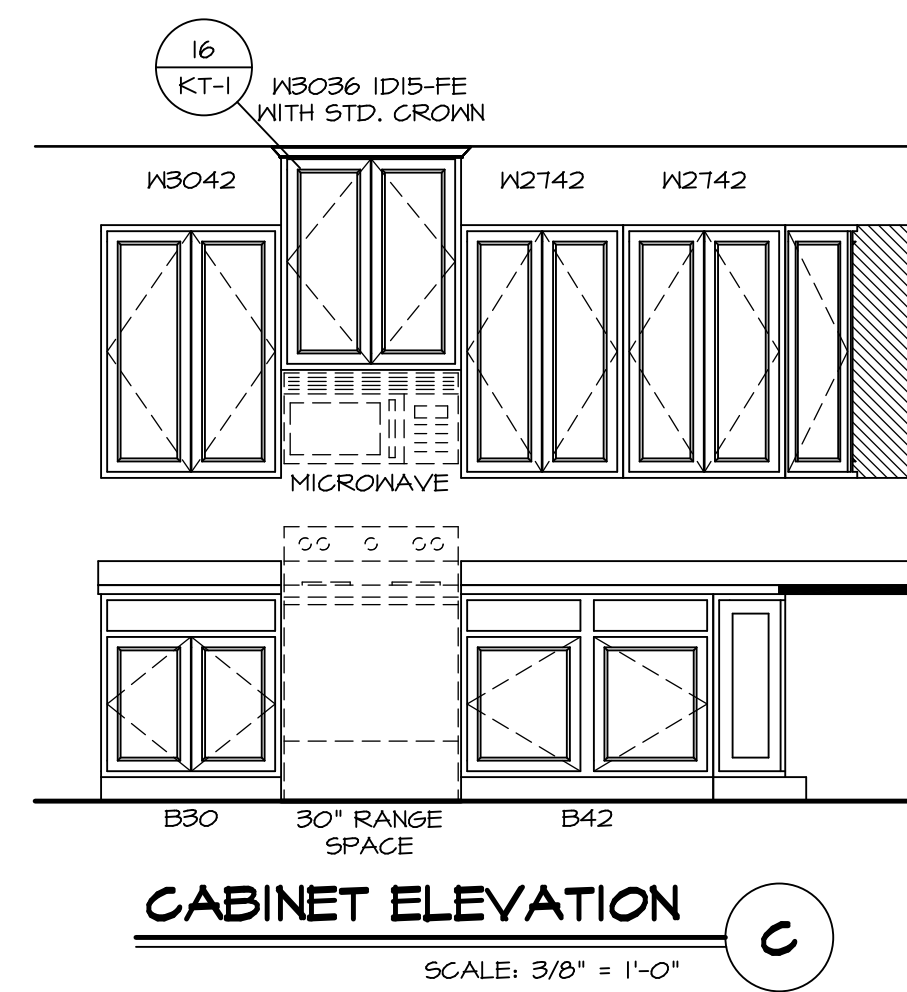
C:\NVR\Solves\PISA_TORRE_PS100_02_V01-CH-A173\1155993\Sheet\Lot_Specific\36_A-7_PLN1_SXC_LS.dwg 03/15/19 - 6:18 am



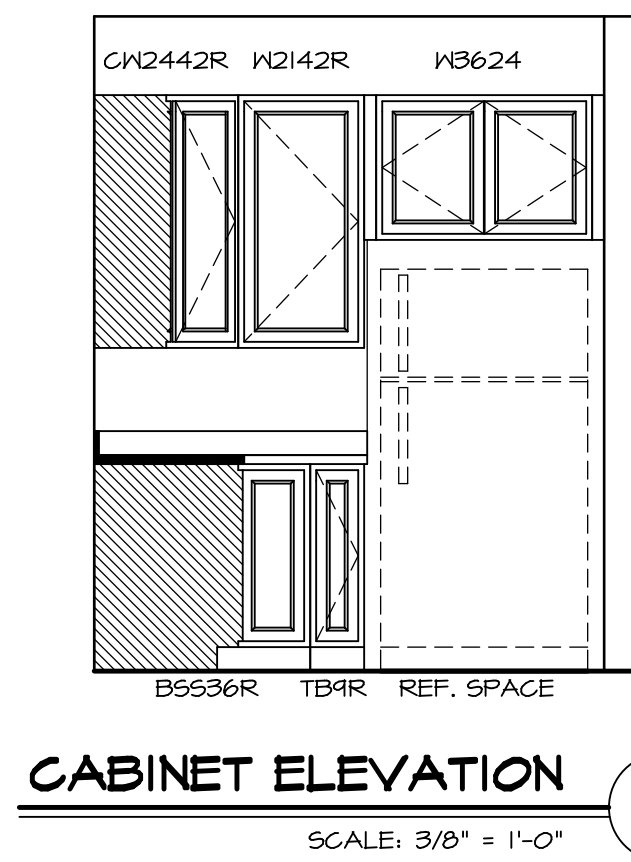
(KT-3209)
COUNTERTOP LAYOUT 2
 SCALE: 3/8" = 1'-0" A-13



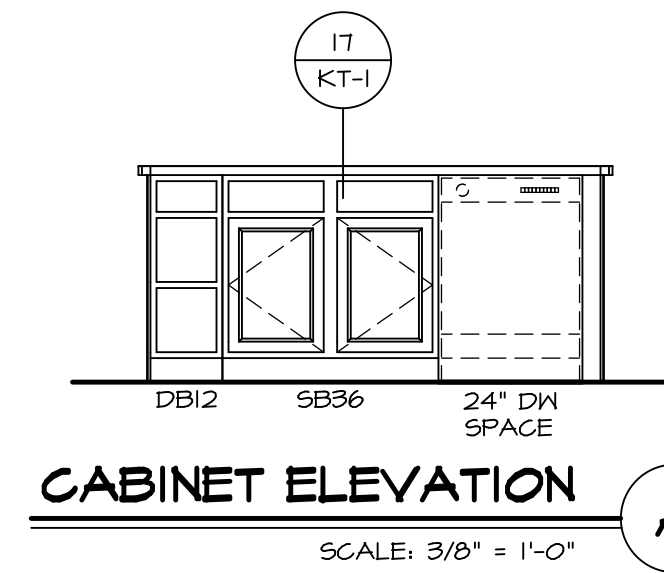
(KC-3209)
CABINET LAYOUT 1
 SCALE: 3/8" = 1'-0" A-13



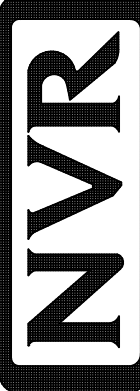
CABINET ELEVATION C
 SCALE: 3/8" = 1'-0"

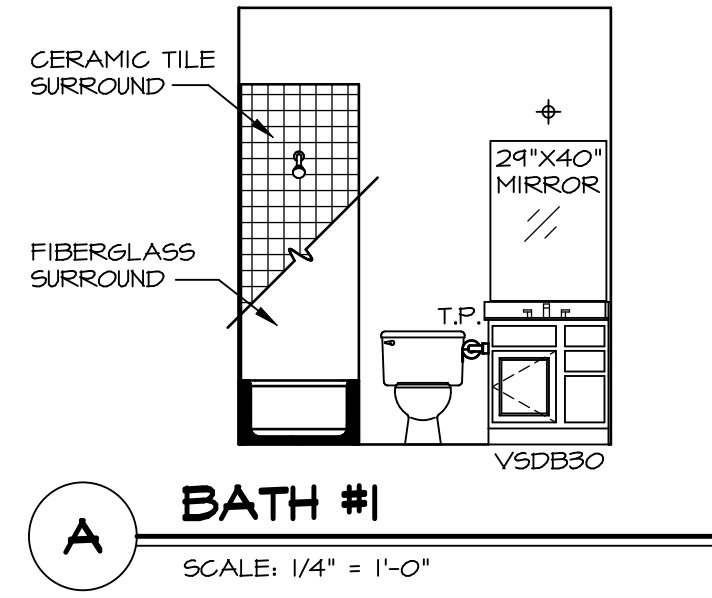


CABINET ELEVATION B
 SCALE: 3/8" = 1'-0"

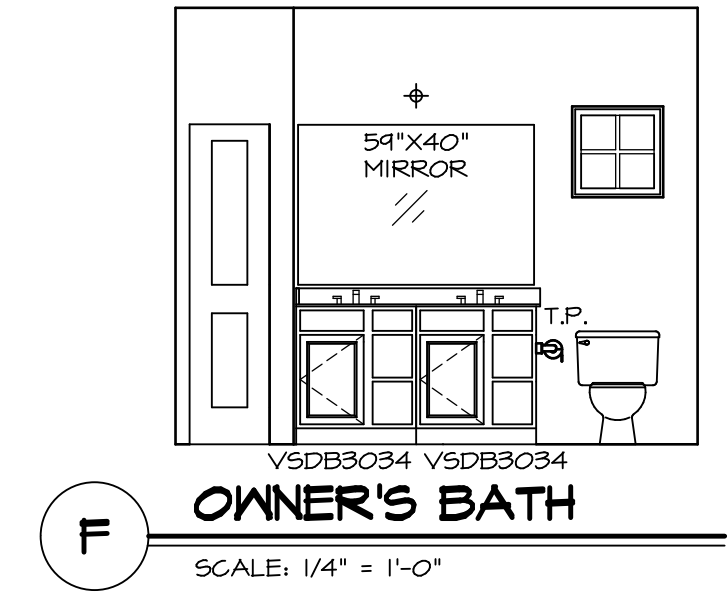


CABINET ELEVATION A
 SCALE: 3/8" = 1'-0"

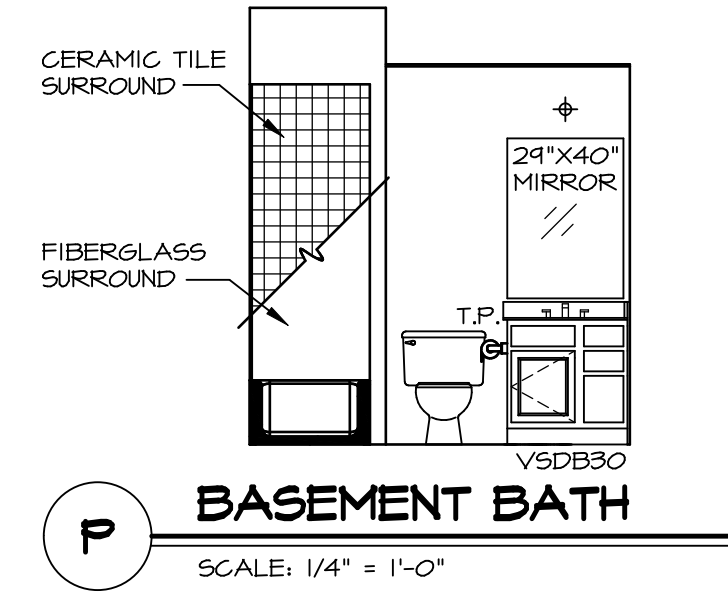
SHEET NO. A-13	MODEL PISA TORRE	DRAWING TITLE KITCHENS	SET NO. P5TC0	REV. NO. 1	REMARKS
			VERSION 02	DATE	
OPTION DESCRIPTION 48	DRAWN BY BDH	DATE: 3/24/15	NVR, Inc., owner, expressly reserves its copyright in these drawings. These drawings are not to be reproduced, changed, copied in any way, or used for any purpose not intended by NVR, Inc. without the prior written consent of NVR, Inc.		
			 <p>NVR, Inc. Architectural Services Architects 5285 Westheimer Blvd, Suite 100 Frederick, MD 21703</p>		
C:\NVR\Solves\PISA_TORRE_P5TC0_02\DCY-CH-A173\1153993\Sheets\Lot_Specific\48_A-13_KIT_LS.dwg 03/15/15 - 6:18 am					



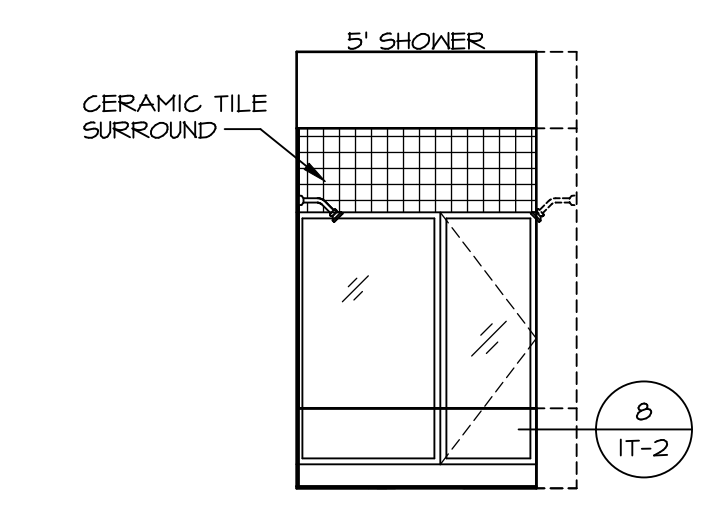
A BATH #1
SCALE: 1/4" = 1'-0"



F OWNER'S BATH
SCALE: 1/4" = 1'-0"



P BASEMENT BATH
SCALE: 1/4" = 1'-0"



G OWNER'S BATH
SCALE: 1/4" = 1'-0"

NOTES:

1. TEMPERED GLASS SHOWER ENCLOSURE WITH SWING DOOR OR OPTIONAL SLIDING DOOR BY DIVISION
2. TUB ACCESS PANELS PROVIDED AS NEEDED, ALL MATERIALS BY DIVISION
3. REFER TO SHEET IT-2 FOR TUB AND SHOWER DETAILS.
4. ALL V5DB24-42 DRAWERS TO BE SET ON RIGHT HAND.
5. BATH ELEVATIONS ARE SHOWN PER PLAN.

NOTES
• WINDOWS VARY PER OPTION.

SHEET NO. A-14	MODEL PISA TORRE	SET NO. PSTCO VERSION 02	DRAWN BY	DATE:	OPTION	REVISIONS	REMARKS
53	DRAWING TITLE BATH ELEVATIONS	DRAWN BY	DATE:	OPTION	OPTION	1 08/07/16 TH - DRAINING ALIGNMENT	
<p style="font-size: small;">NVR, Inc., owner, expressly reserves its copyright in these plans. These plans are not to be reproduced, changed, adapted, or otherwise used in any way without the prior written consent of NVR, Inc.</p>							
<p style="font-size: x-small;">NVR, Inc. Architectural Services 5285 Westpark Drive, Suite 100 Frederick, MD 21703</p>							
C:\NVR\Solves\PISA_TORRE_PSTCO_VCI-CH-A173\1155999\SheetA\Lot_Specific\A-14_BATH_LS.dwg 03/15/19 - 6:18 am							