

1
A-5 **PLUMBING PLAN**

SCALE: 1/4" = 1'-0"

SHEET NO. **A-5**
 MODEL **PISA TORRE**
 DRAWING TITLE **PLUMBING PLAN**
 OPTION DESCRIPTION
 15

SET NO. **PSTCO**
 VERSION **03**
 DRAWN BY
 DATE:
 OPTION



NVR, Inc.
 Architectural Services
 Architects
 21 Baltimore Ave. A
 Frederick, MD 21702

NVR, Inc., owner, expressly reserves its copyright in these plans. These plans are not to be reproduced, changed, adapted in any way, or used for any purpose not intended by NVR, Inc. without the written consent of NVR, Inc.

REV. NO. | DATE | REMARKS

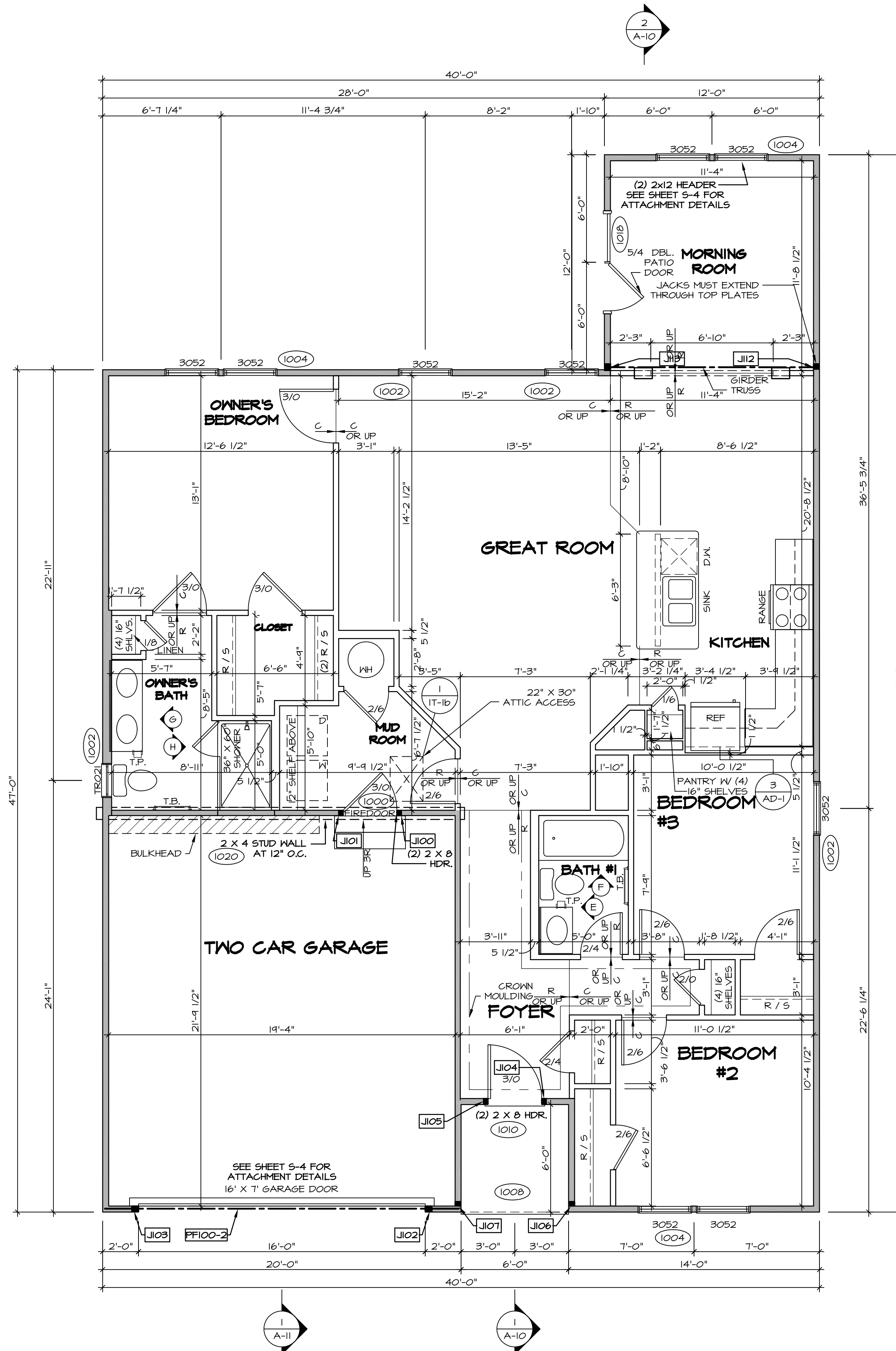
REV. NO.	DATE	REMARKS

FIRST FLOOR JACK SCHEDULE				
IDENTIFIER	DESCRIPTION	OPTIONS	ENG. NUM.	REMARKS
J100	JACK - (2) 2X4 SPF STUD GRADE	SXC	1000	
J101	JACK - (2) 2X4 SPF STUD GRADE	SXC	1000	
J102	JACK - (3) 2X4 SPF STUD GRADE	SXC	1012	
J103	JACK - (3) 2X4 SPF STUD GRADE	SXC	1012	
J104	JACK - (2) 2X4 SPF STUD GRADE	SXC	1010	
J105	JACK - (2) 2X4 SPF STUD GRADE	SXC	1010	
J106	JACK - (2) 2X4 SPF STUD GRADE		1008	
J107	JACK - (2) 2X4 SPF STUD GRADE		1008	
J112	JACK - (3) 2X4 SPF#1	MAA / SXC	1020	
J113	JACK - (3) 2X4 SPF#1	MAA / SXC	1020	

LVL PLY TO PLY FASTENING SCHEDULE: (WHERE APPLICABLE BASED ON LVL USAGE)

- 1A - (2) PLY UP TO AND INCLUDING 11 7/8" TALL; FASTEN PLYS W/ (2) ROWS 16D NAILS AT 12" O.C.
- 2A - (2) PLY 14" TO AND INCLUDING 18" TALL (INCLUSIVE); FASTEN PLYS W/ (3) ROWS 16D NAILS AT 12" O.C.
- 3A - (2) PLY 20" TALL AND OVER; FASTEN PLYS W/ (4) ROWS 16D NAILS AT 12" O.C.
- 4A - (3) PLY UP TO AND INCLUDING 11 7/8" TALL; FASTEN PLYS W/ (2) ROWS 16D NAILS AT 12" O.C. FROM EACH SIDE
- 5A - (3) PLY 14" TO AND INCLUDING 18" TALL (INCLUSIVE); FASTEN PLYS W/ (3) ROWS 16D NAILS AT 12" O.C. FROM EACH SIDE
- 6A - (3) PLY 20" TALL AND OVER; FASTEN PLYS W/ (4) ROWS 16D NAILS AT 12" O.C. FROM EACH SIDE
- 7A - (4) PLY (ALL SIZES); FASTEN PLYS W/ (2) ROWS 1/2" DIAMETER A307 BOLTS AT 24" O.C. SEE SHOP DRAWINGS FOR ADDITIONAL INFORMATION.

FIELD INSTALLED FIRST FLOOR BEAM/HEADER SCHEDULE					
IDENTIFIER	DESCRIPTION	LENGTH	OPTIONS	ENG. NUM.	REMARKS
PF100-2	LVL - 14	19'-4"		1012	2A



LEGEND	
	BEARING WALL
	NON BEARING WALL
	INDICATES BEARING FROM POINT-LOAD ABOVE
	JACKS
	BEAM/HEADER
	PAD FOOTING
	STEEL COLUMN
	PORTAL FRAME
	JOIST/TRUSS
	LVL
	ENGINEERING PAGE NUMBER

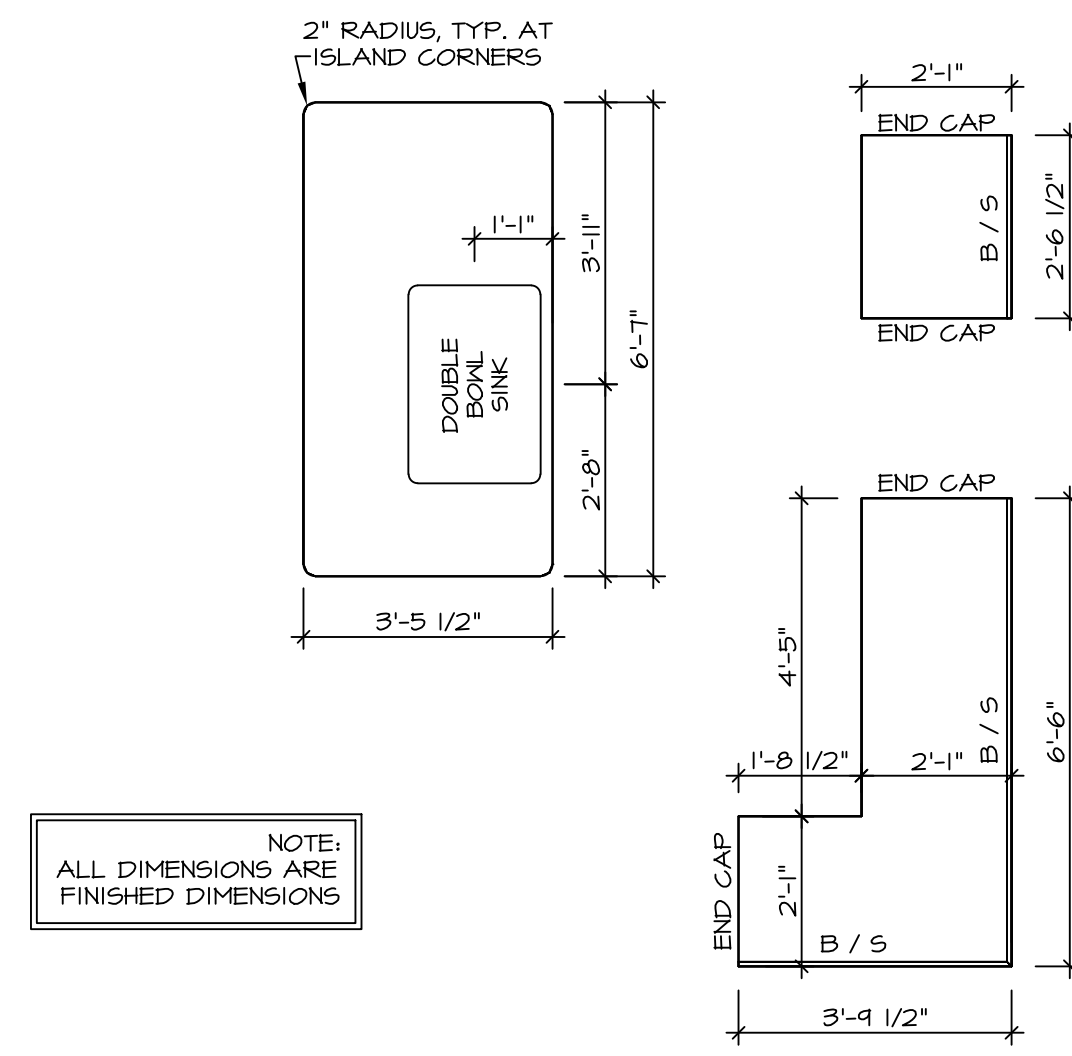
SEE FC DETAILS FOR FRAMING CONNECTORS

- FLOOR PLAN NOTES**
- ALL HEADERS ARE (2) 2x6 W/ 2x4 WALLS OR (3) 2x6 W/ 2x6 WALLS, UNLESS OTHERWISE NOTED.
 - ALL HEADERS TO HAVE (1) 2x4 OR 2x6 JACK AND KING STUD EACH END, UNLESS OTHERWISE NOTED.
 - ALL EXTERIOR WALLS TO BE 4" AND ALL INTERIOR WALLS TO BE 3 1/2", UNLESS OTHERWISE NOTED.
 - HATCHED AREAS INDICATE DROPPED CEILINGS. ALL DROPPED CEILINGS ARE 12" UNLESS OTHERWISE NOTED.
 - SEE "BRACED WALL PANEL DETAIL SHEET" FOR SPECIAL WALL FRAMING LOCATIONS AND HEADER SIZES, IF APPLICABLE.
 - SEE STANDARD DETAIL CATEGORY "IT" SHEET(S) FOR INTERIOR TRIM DETAILS.
 - SEE ARCHITECTURAL DETAIL SHEET "AD" FOR HOUSE SPECIFIC INTERIOR TRIM OPTION TABLE.
 - ALL WINDOWS HAVE T-O 1/2" HEADER HEIGHT UNLESS OTHERWISE NOTED.
 - ALL CASED OPENINGS AT 7'-11", UNLESS OTHERWISE NOTED.
 - ALL HEADERS IN NON-BEARING WALLS SHALL BE A SINGLE FLAT 2X4 OR 2X6 ATTACHED TO CRIPPLES ABOVE, UNLESS OTHERWISE NOTED.

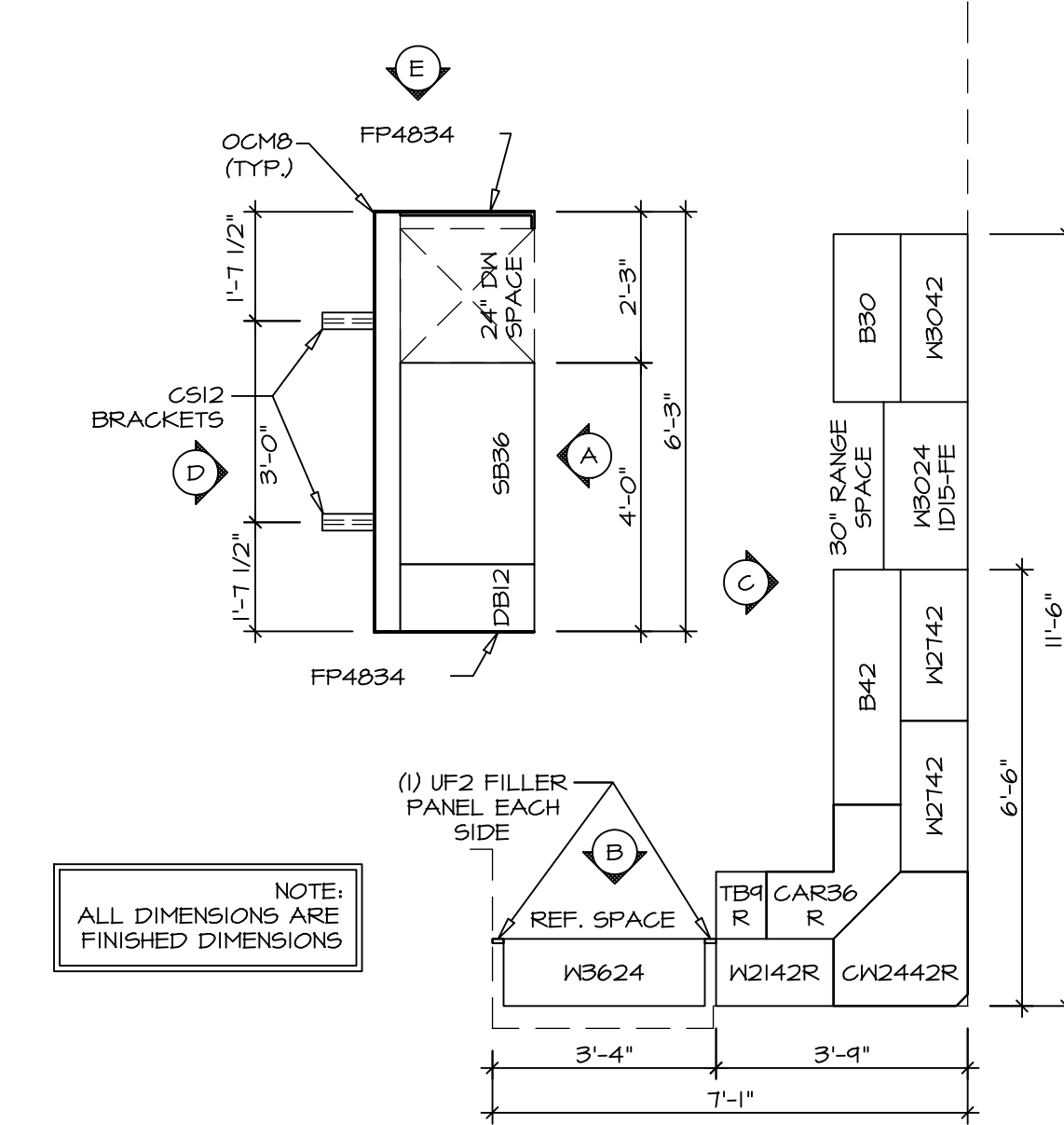
- GYPSUM NOTES**
- AT GARAGE:**
GYPSUM BOARD AT COMMON WALLS, CEILINGS, BEAM WRAPS AND SUPPORTS PER STANDARD DETAIL FA-1(b) FIRE ASSEMBLIES OR AS REQUIRED BY LOCAL CODE.
- AT STAIRS:**
1/2" GYPSUM BOARD AT UNDERSIDE OF STAIRS AND WALLS IN CLOSET

FIRST FLOOR PLAN
SCALE: 1/4" = 1'-0"

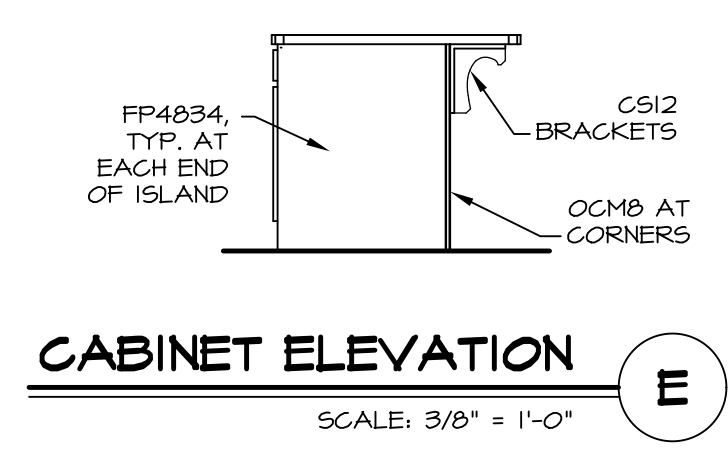
SHEET NO. A-7	MODEL PISA TORRE	SET NO. P5TCO	VERSION 03
		DRAWN BY	DATE:
OPTION DESCRIPTION 20	DRAWING TITLE FIRST FLOOR PLAN	DATE:	
		OPTION	
<p>NVR, Inc. Architectural Services 21 Belvidere Ave. Frederick, MD 21702</p>			
<p>REV. NO. DATE T/O/TIT SLS - T-PLY CONVERSION REVISIONS</p>			
<p>REMARKS</p>			



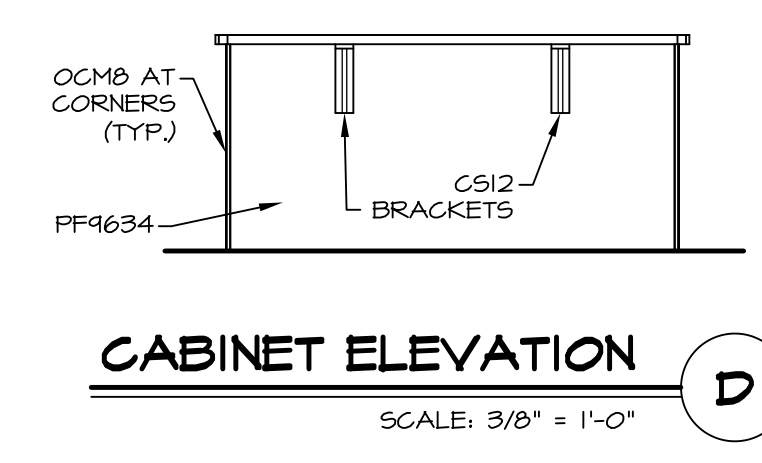
(KT-3359)
COUNTERTOP LAYOUT
 SCALE: 3/8" = 1'-0" 2 A-12



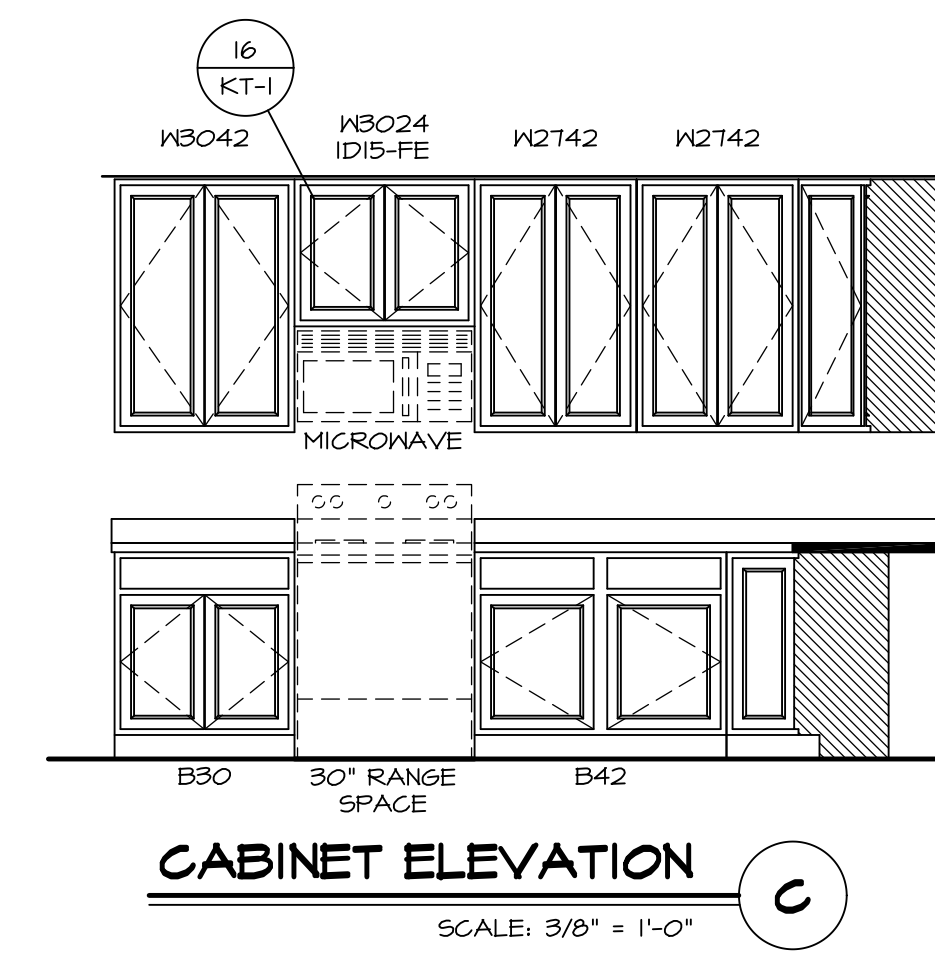
(KC-3359)
CABINET LAYOUT
 SCALE: 3/8" = 1'-0" 1 A-12



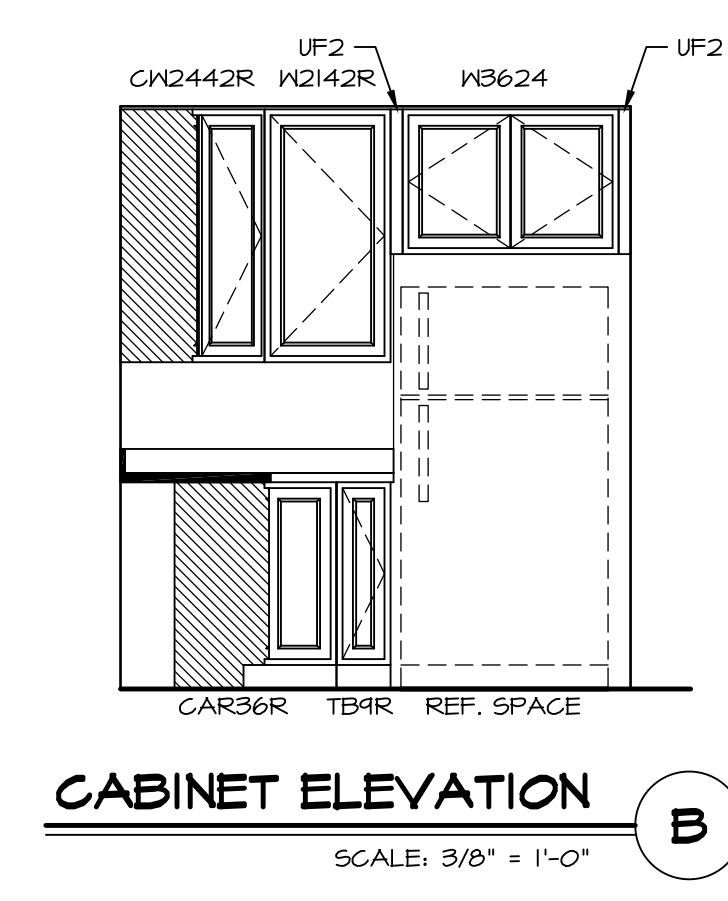
CABINET ELEVATION
 SCALE: 3/8" = 1'-0" E



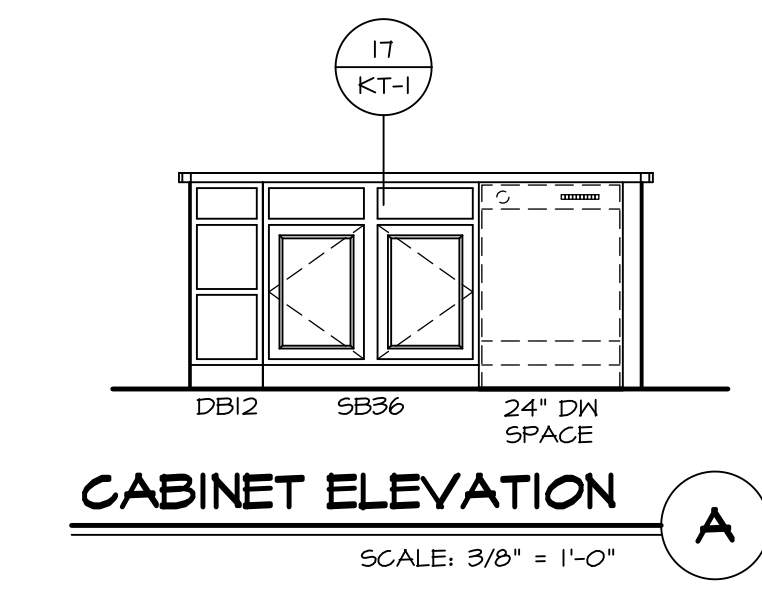
CABINET ELEVATION
 SCALE: 3/8" = 1'-0" D



CABINET ELEVATION
 SCALE: 3/8" = 1'-0" C



CABINET ELEVATION
 SCALE: 3/8" = 1'-0" B

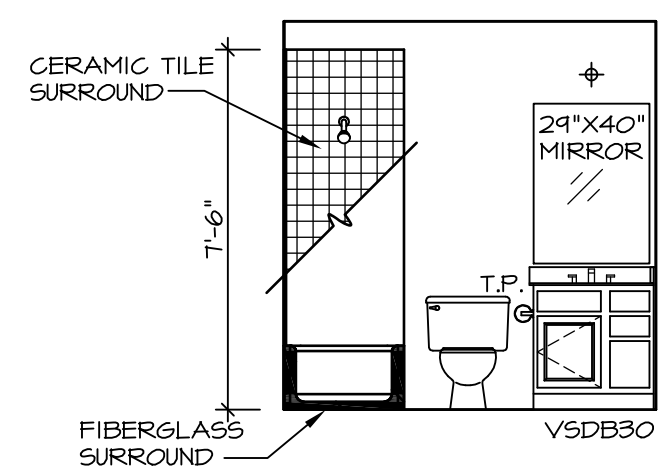


CABINET ELEVATION
 SCALE: 3/8" = 1'-0" A

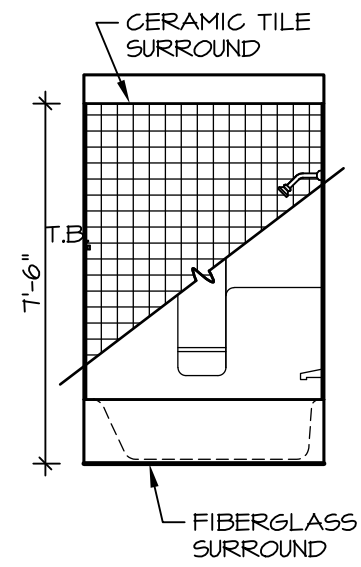
SHEET NO. A-13	MODEL PISA TORRE DRAWING TITLE KITCHENS OPTION DESCRIPTION SET NO. PSTCO VERSION 03 DRAWN BY DATE: OPTION	REV. NO. DATE 	REMARKS
--------------------------	--	---	-------------------------------------

NVR
 NVR, Inc.
 Architectural Services
 Architects
 21 Parkside Ave., A
 Frederick, MD 21702

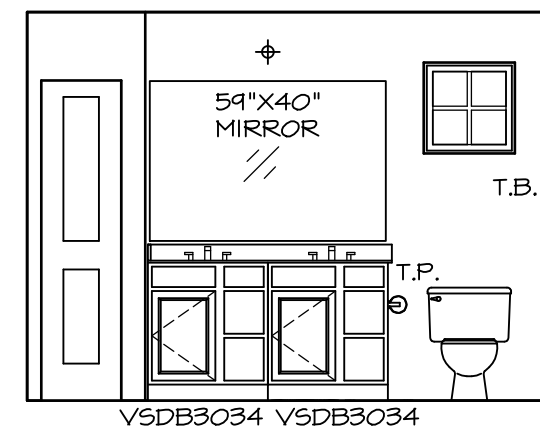
NVR, Inc., owner, expressly reserves its copyright in these plans. These plans are not to be reproduced, changed, copied in any way, or used for any purpose other than that for which they are assigned to, without the prior written consent of NVR, Inc.



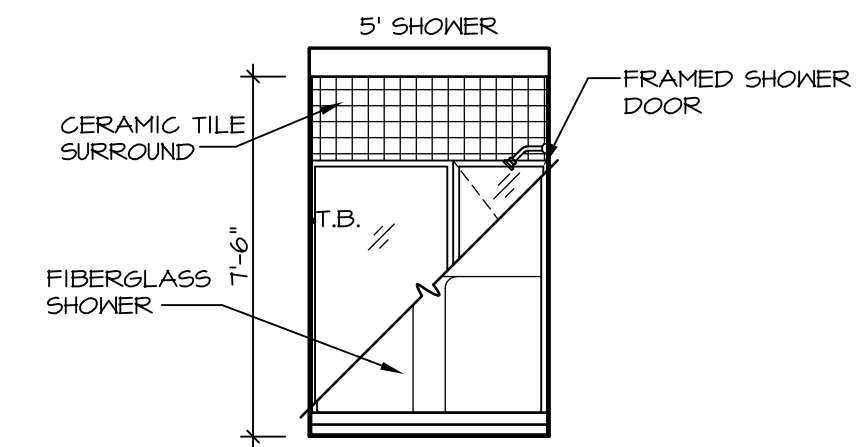
E BATH #1
SCALE: 1/4" = 1'-0"



F BATH #1
SCALE: 1/4" = 1'-0"



G OWNER'S BATH
SCALE: 1/4" = 1'-0"



H OWNER'S BATH
SCALE: 1/4" = 1'-0"

NOTES:

1. TEMPERED GLASS SHOWER ENCLOSURE WITH SWING DOOR OR OPTIONAL SLIDING DOOR BY DIVISION
2. TUB ACCESS PANELS PROVIDED AS NEEDED, ALL MATERIALS BY DIVISION
3. REFER TO SHEET IT-2 FOR TUB AND SHOWER DETAILS.
4. ALL VSDB24-42 DRAWERS TO BE SET ON RIGHT HAND.
5. BATH ELEVATIONS ARE SHOWN PER PLAN.

SET NO. P5TCO
VERSION 03
DRAWN BY
DATE:
OPTION

PISA TORRE
DRAWING TITLE
BATH ELEVATIONS
OPTION DESCRIPTION

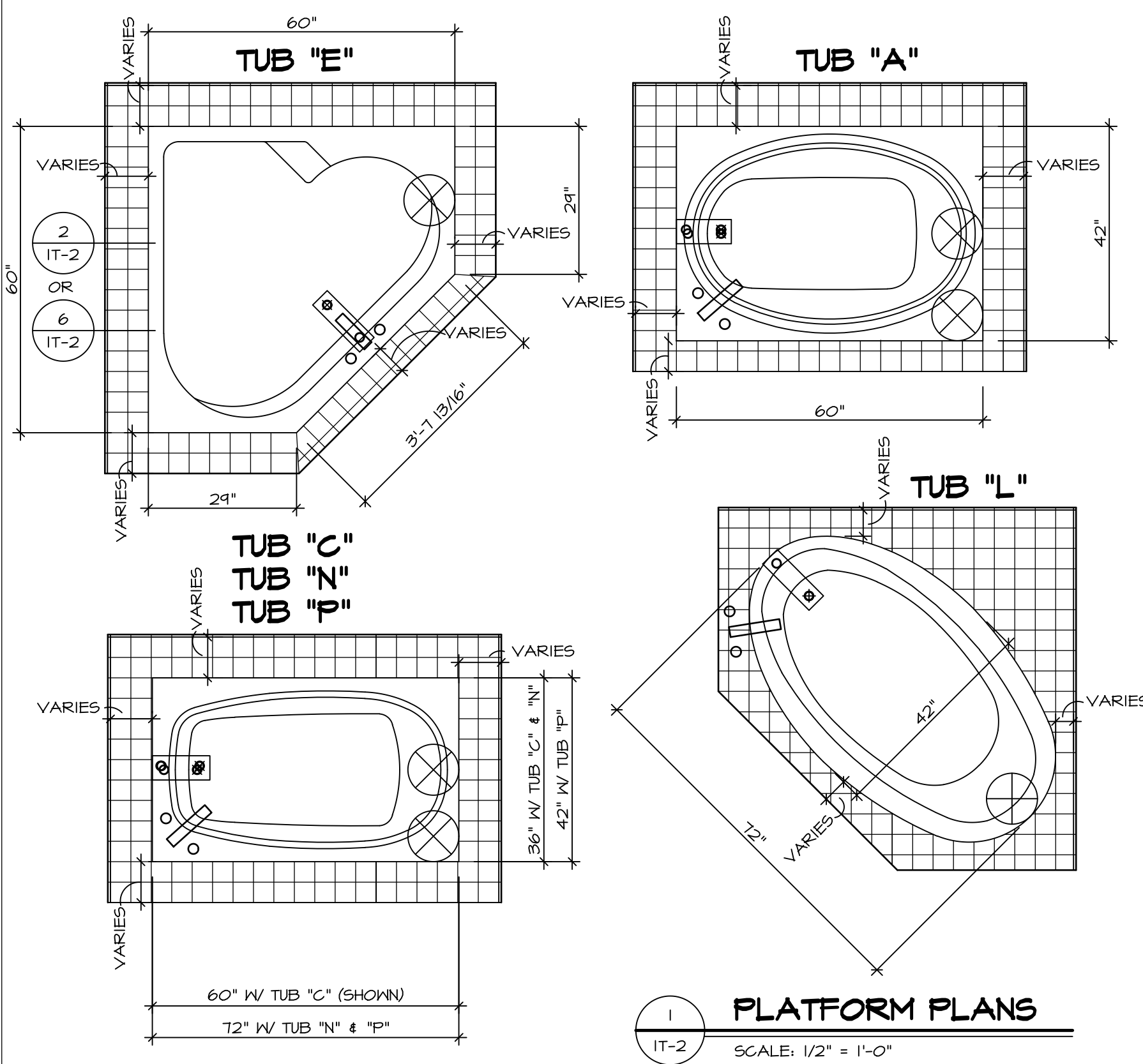
A-14
29



NVR, Inc., owner, expressly reserves its common law copyright in these architectural plans. These plans are not to be reproduced, copied, or otherwise used without the prior written consent of NVR, Inc.

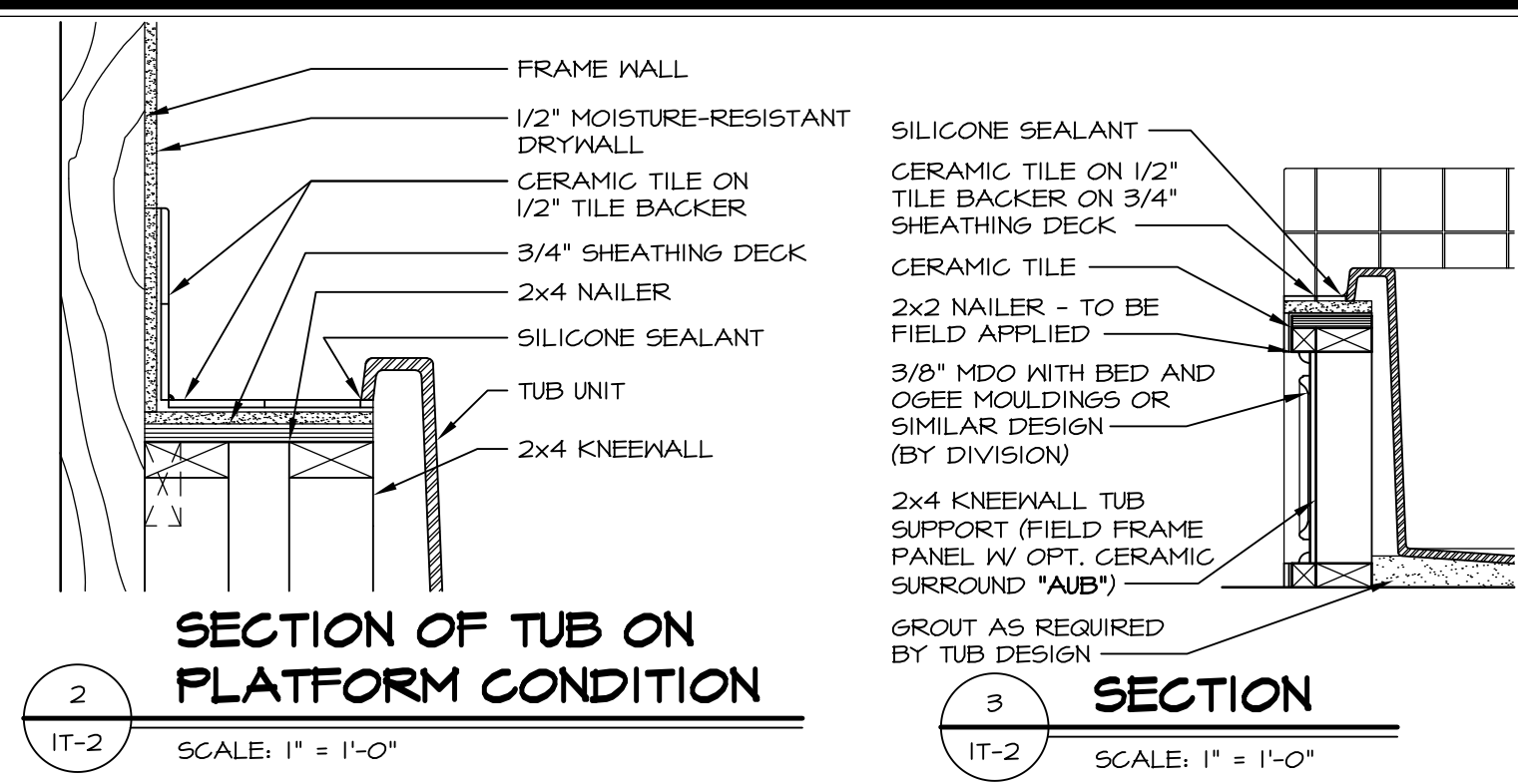
REMARKS

REV. NO. DATE

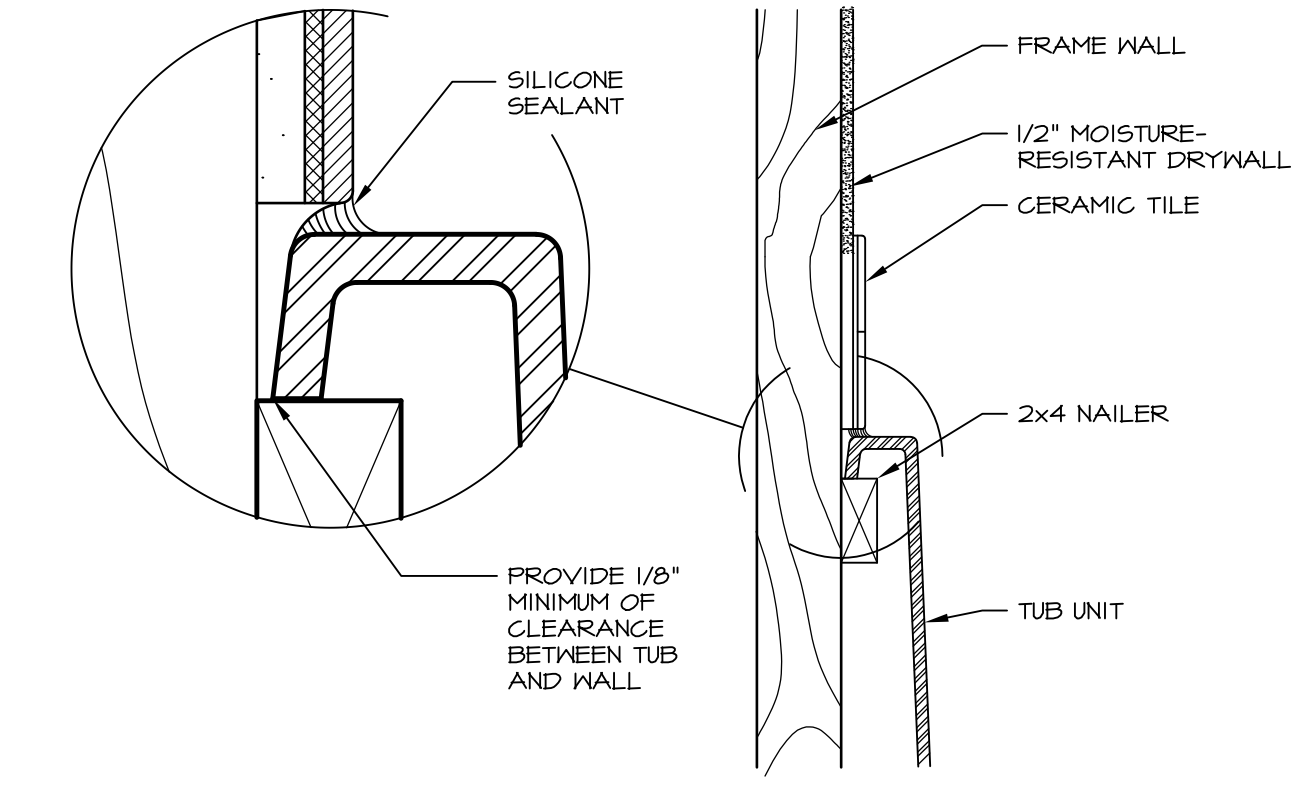


1 PLATFORM PLANS
SCALE: 1/2" = 1'-0"

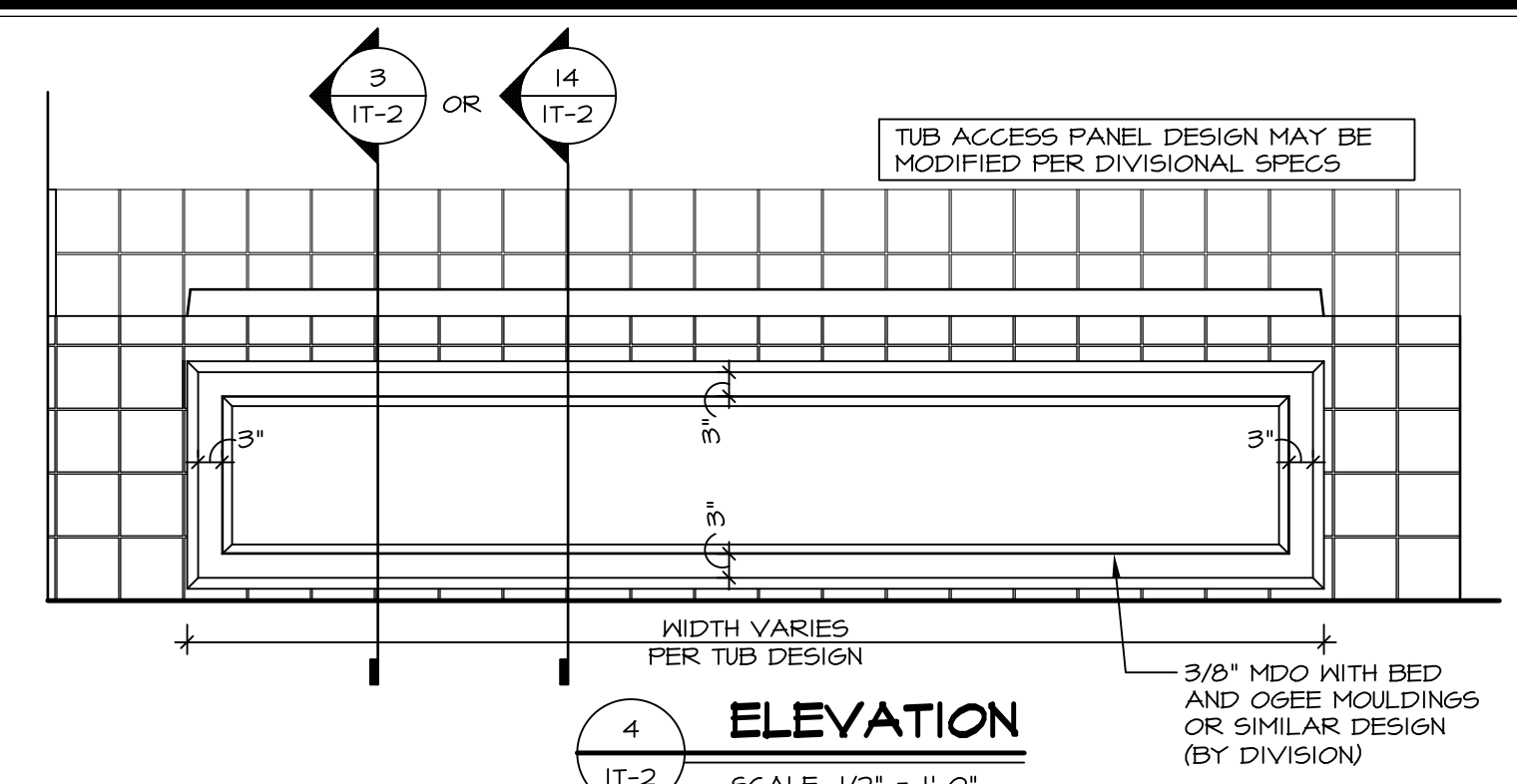
TUB	MANUF.	HEIGHT	WIDTH	LENGTH	TUB DECK PANEL HEIGHT
"A"	KOHLER/STERLING	18 3/4"	42"	60"	17 1/8"
"C"	KOHLER/STERLING	18 3/4"	36"	60"	17 1/8"
"E"	KOHLER/STERLING	19 1/2"	60"	60"	17 7/8"
"L"	KOHLER/STERLING	18 1/2"	42"	72"	16 7/8"
"N"	KOHLER/STERLING	18 3/4"	36"	72"	17 1/8"
"P"	KOHLER/STERLING	18 3/4"	42"	72"	17 1/8"



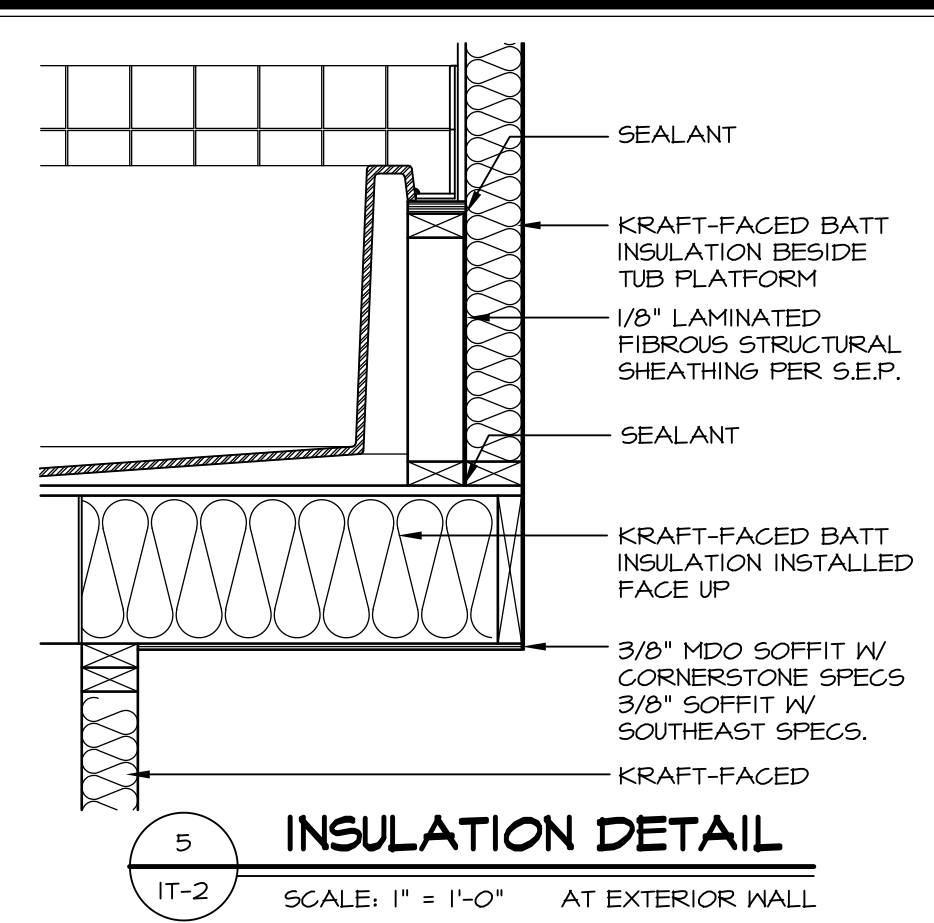
2 SECTION OF TUB ON PLATFORM CONDITION
SCALE: 1" = 1'-0"



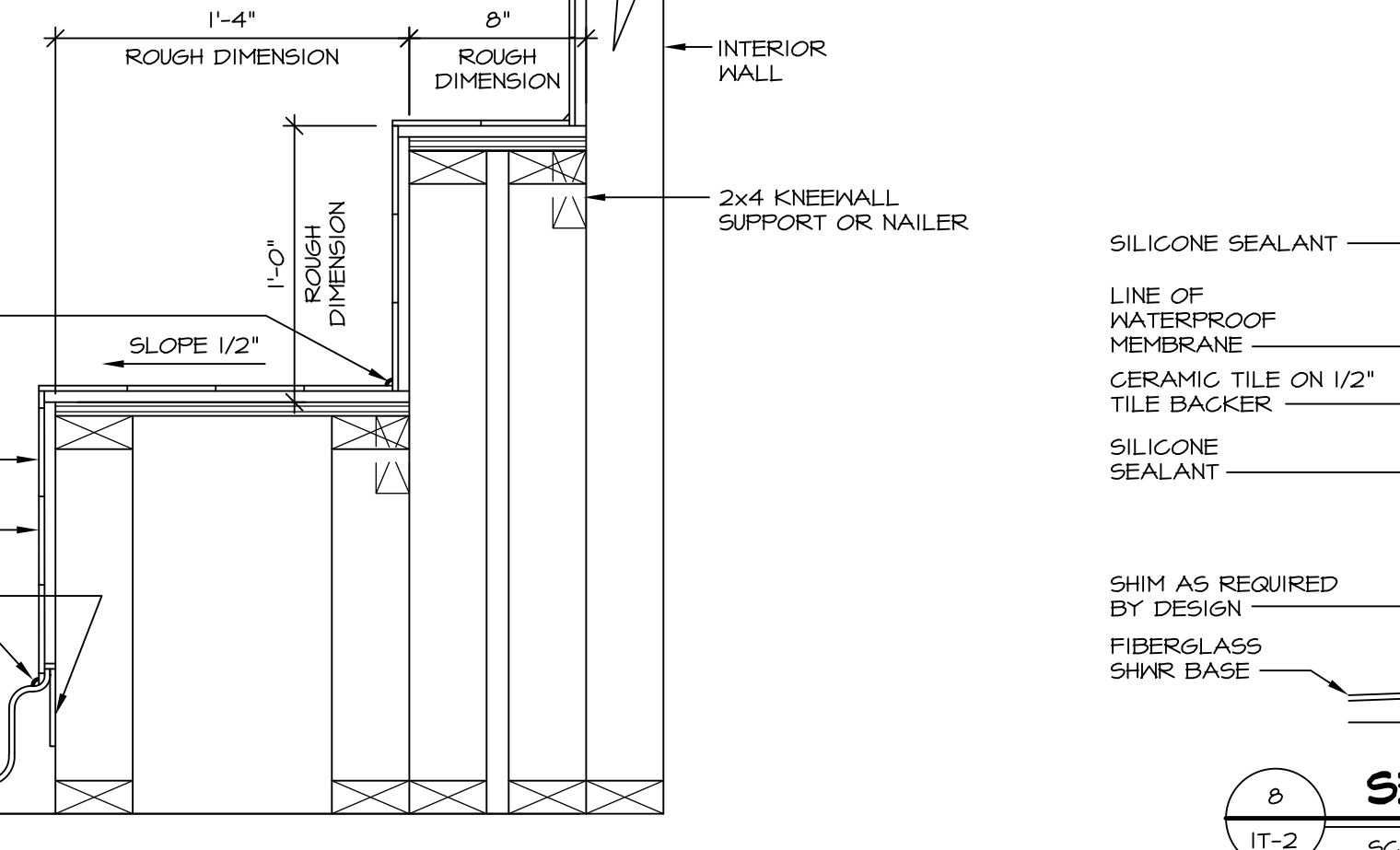
3 SECTION OF TUB TO WALL CONDITION
SCALE: 1 1/2" = 1'-0"



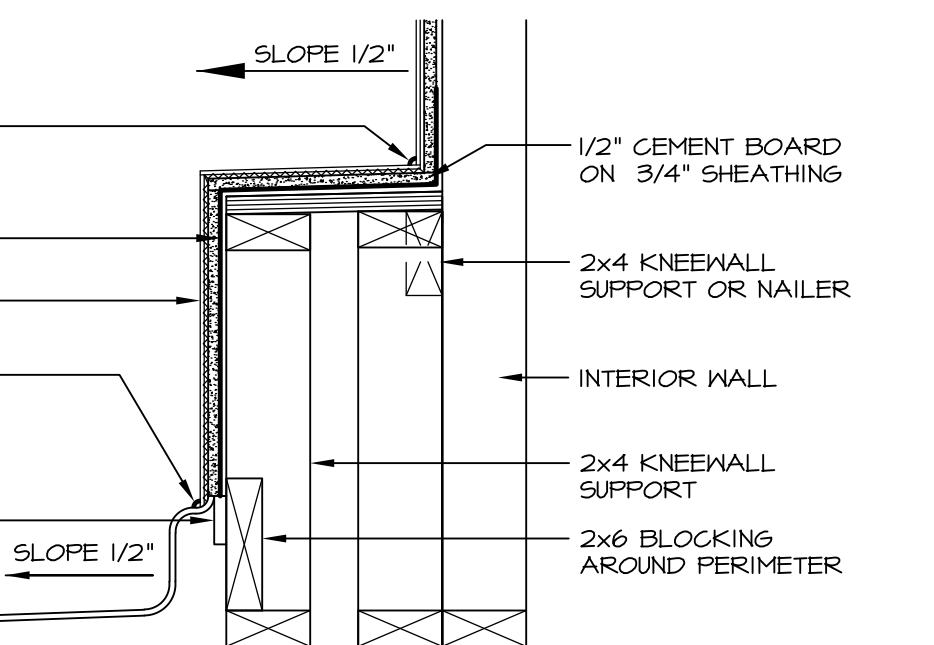
4 ELEVATION
SCALE: 1/2" = 1'-0"



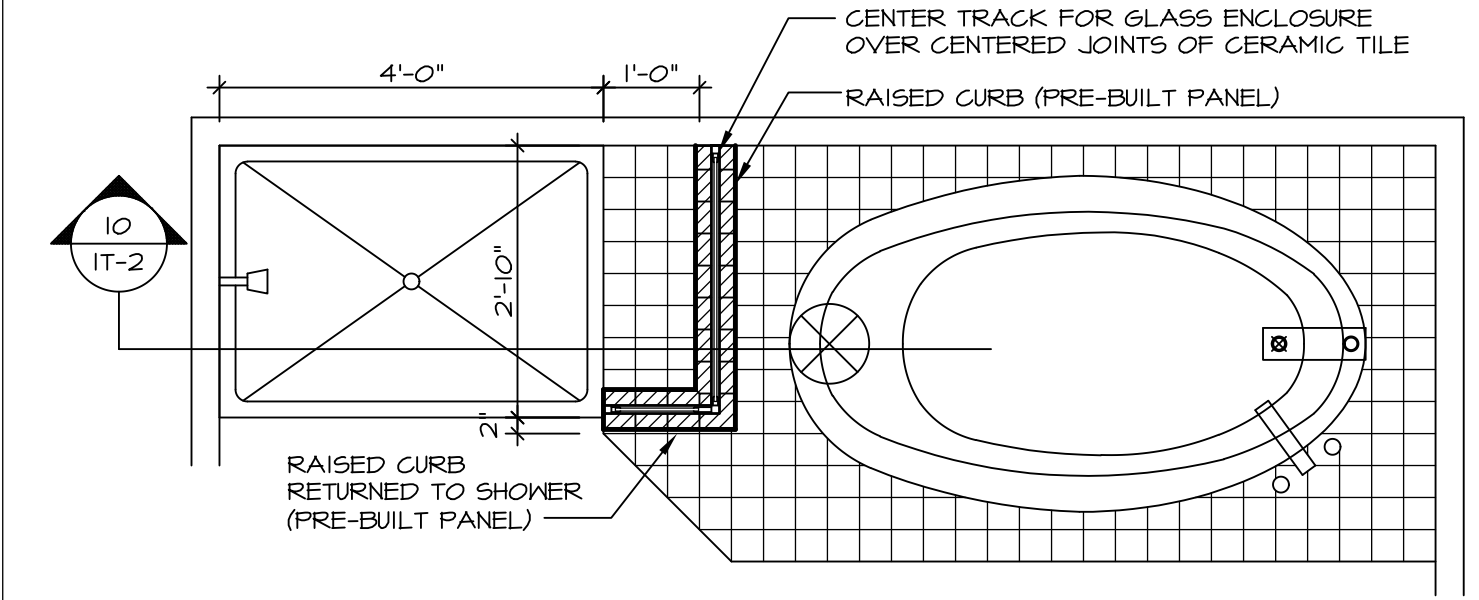
5 INSULATION DETAIL
SCALE: 1" = 1'-0" AT EXTERIOR WALL



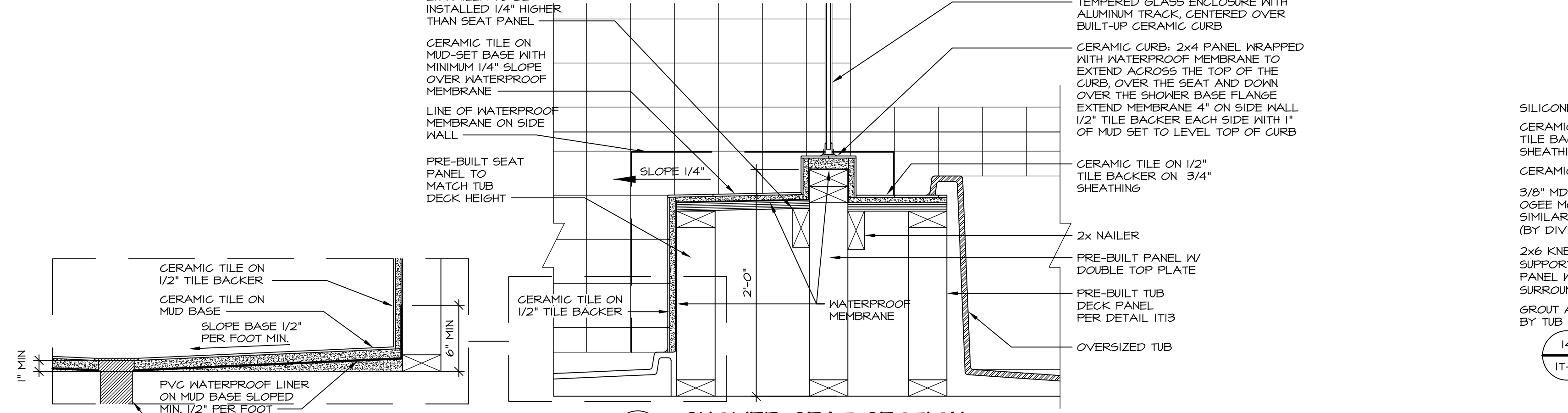
7 SECTION OF SHOWER SEAT AND SHELF
SCALE: 1 1/2" = 1'-0"



8 SECTION OF SHOWER SEAT
SCALE: 1-1/2" = 1'-0" FIBERGLASS SHOWER BASE



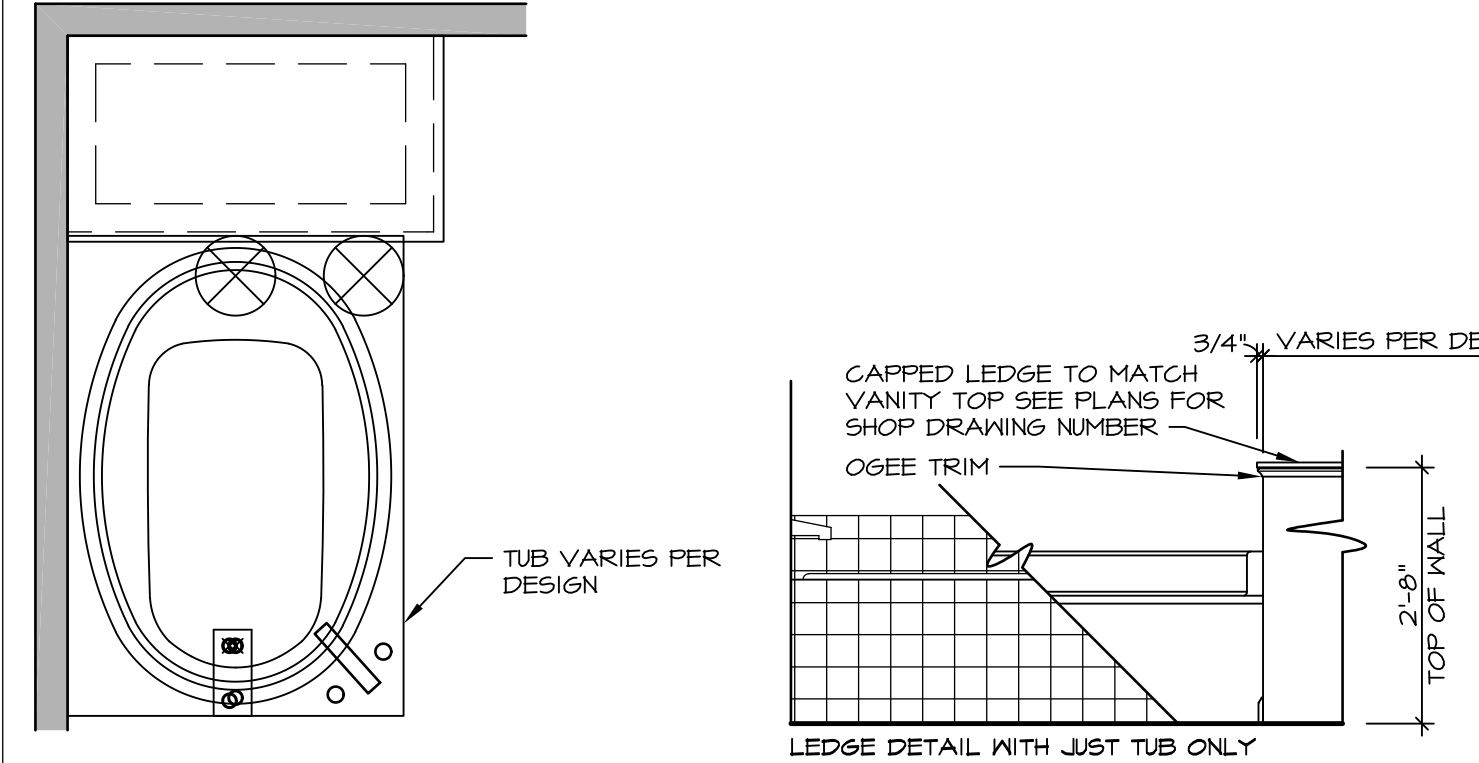
9 SHOWER SEAT PLAN / DETAIL
SCALE: 1/2" = 1'-0"



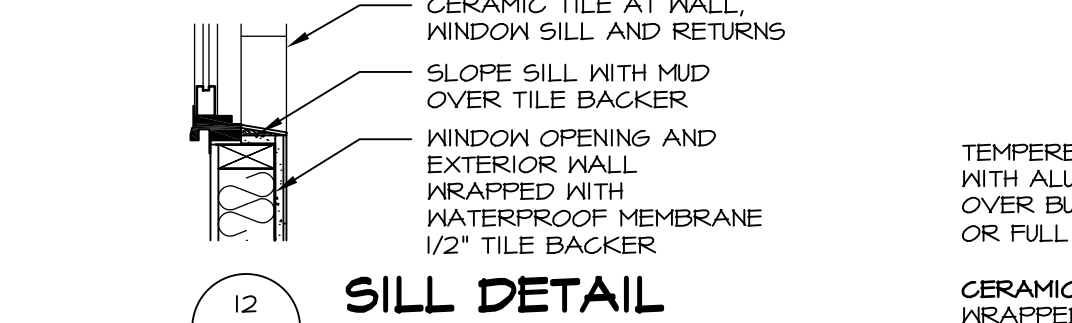
10 SHOWER SEAT SECTION
SCALE: 1-1/2" = 1'-0"



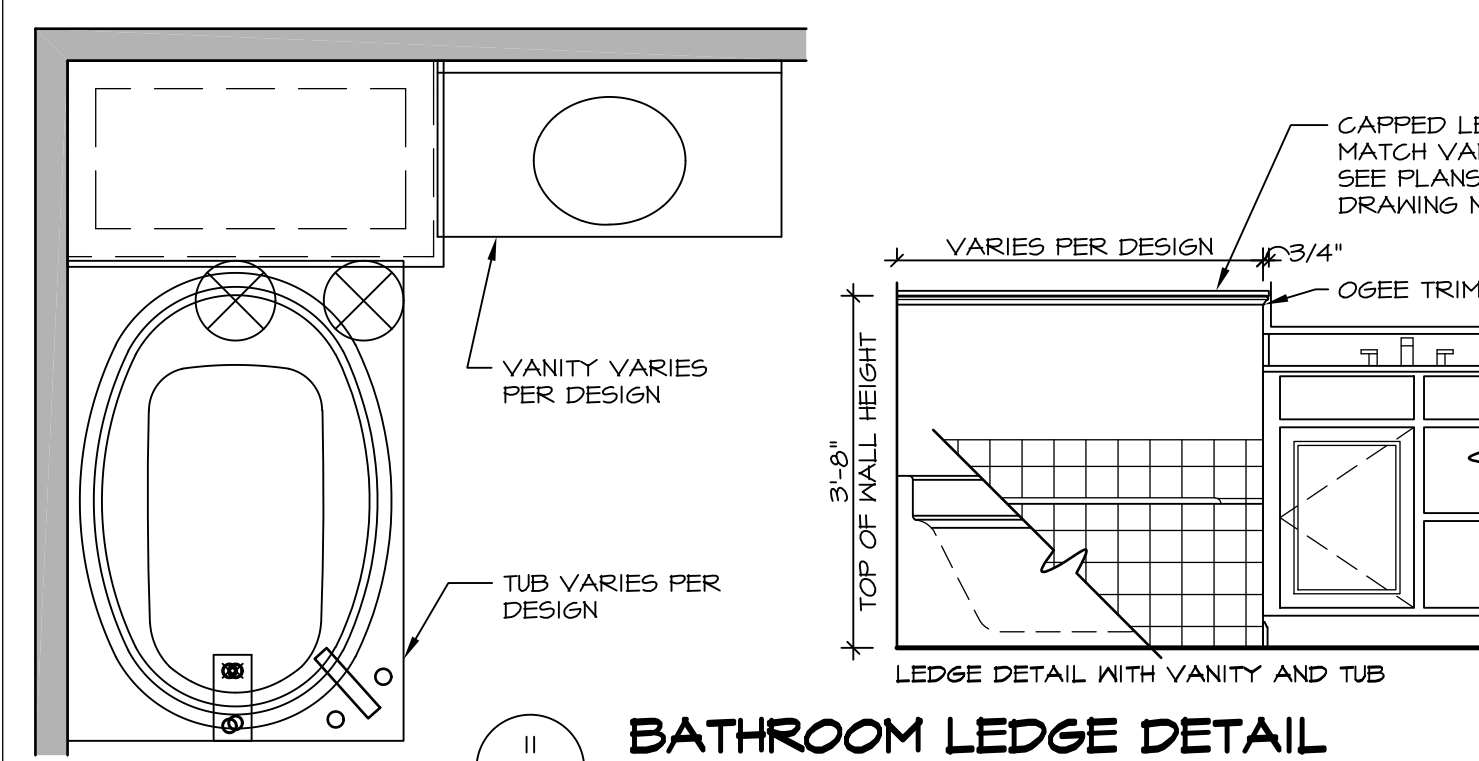
11 ALTERNATE SHOWER PAN DETAIL



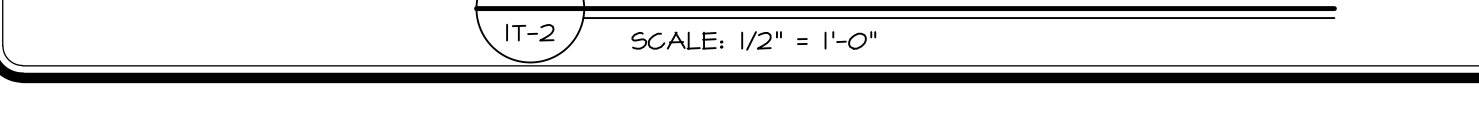
12 BATHROOM LEDGE DETAIL
SCALE: 1/2" = 1'-0"



13 SILL DETAIL
SCALE: 1" = 1'-0"



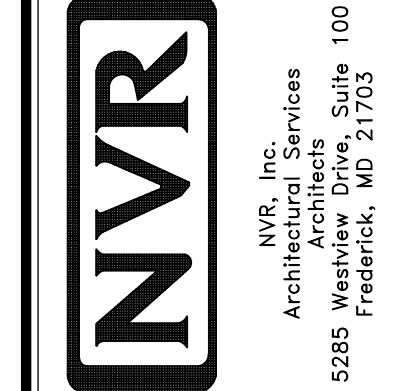
14 BATHROOM LEDGE DETAIL
SCALE: 1/2" = 1'-0"



15 SHOWER SEAT SECTION
SCALE: 1 1/2" = 1'-0" MUD-SET SHOWER

REV. NO.	DATE	DESCRIPTION
1	5/1/17	EBP - REVISED DETAIL 1 AND 11 TO REMOVE TUB ACCESS PANEL REF. (095 #15 541/4)
2	9/2/17	EBP - REVISED T-FLY NOTE TO CALL OUT LFS
3	9/2/17	EBP - REVISED NOTE ON DETAIL #1 - REVISED ORDER OF MATERIAL PARA#493/4

NVR, Inc., owner, expressly reserves its common law copyright and other property rights in these plans. These plans are not to be reproduced, stored in a retrieval system, or transmitted in any form or by any means, electronic, mechanical, photocopying, recording, or by any information storage and retrieval system, without the prior written consent of NVR, Inc.



SET NO.	VERSION	DATE	OPTION
1	1		

STANDARD DETAILS
DRAWING TITLE
INTERIOR TRIM DETAILS
BATH DETAILS
OPTION DESCRIPTION

SHEET NO. IT-2