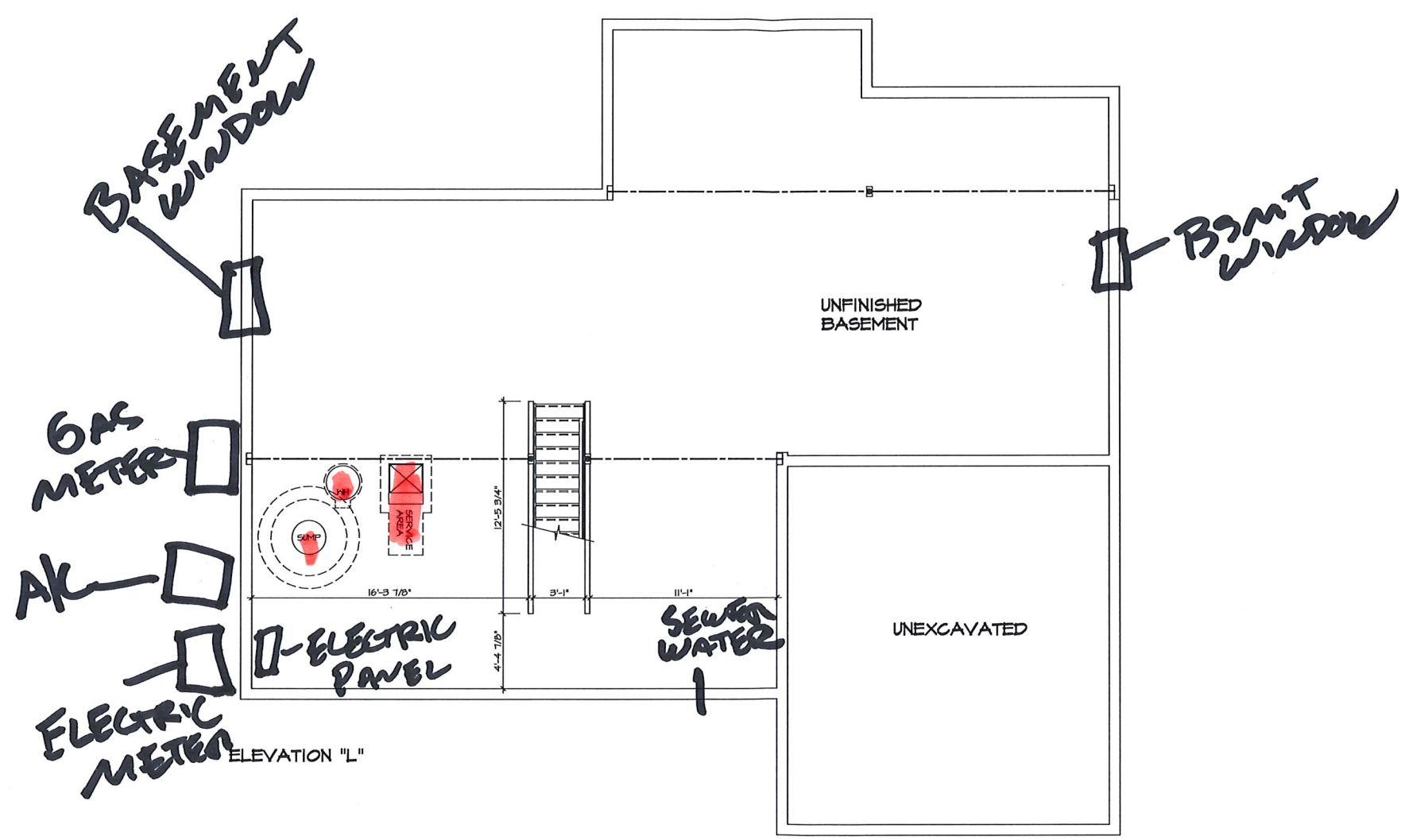


LEGEND	
	BEARING WALL
	NON BEARING WALL
	INDICATES BEARING FROM POINT-LOAD ABOVE
	JACKS
	BEAM-HEADER
	PAD FOOTING
	STEEL COLUMN
	PORTAL FRAME
	JOIST/TRUSS
	LVL

- FLOOR PLAN NOTES**
1. ALL HEADERS ARE (2) 2x6 w/ 2x4 WALLS OR (3) 2x6 w/ 2x6 WALLS, UNLESS OTHERWISE NOTED.
  2. ALL HEADERS TO HAVE (1) 2x4 OR 2x6 JACK EACH END, UNLESS OTHERWISE NOTED.
  3. ALL EXTERIOR WALLS TO BE 4" AND ALL INTERIOR WALLS TO BE 3 1/2", UNLESS OTHERWISE NOTED.
  4. HATCHED AREAS INDICATE DROPPED CEILINGS. ALL DROPPED CEILINGS ARE 12" UNLESS OTHERWISE NOTED.
  5. SEE "BRACED WALL PANEL DETAIL SHEET" FOR SPECIAL WALL FRAMING LOCATIONS AND HEADER SIZES, IF APPLICABLE.
  6. ALL WINDOWS HAVE 1'-0 1/2" HEADER HEIGHT UNLESS OTHERWISE NOTED.

- GYPSON NOTES**
- AT GARAGE:  
GYPSON BOARD AT COMMON HALLS, CEILINGS, BEAM WRAPS AND SUPPORTS AS REQUIRED BY LOCAL CODE.
- AT STAIRS:  
1/2" GYPSON BOARD AT UNDERSIDE OF STAIRS AND WALLS IN CLOSET



**BASEMENT FLOOR PLAN**  
SCALE: 1/4" = 1'-0"

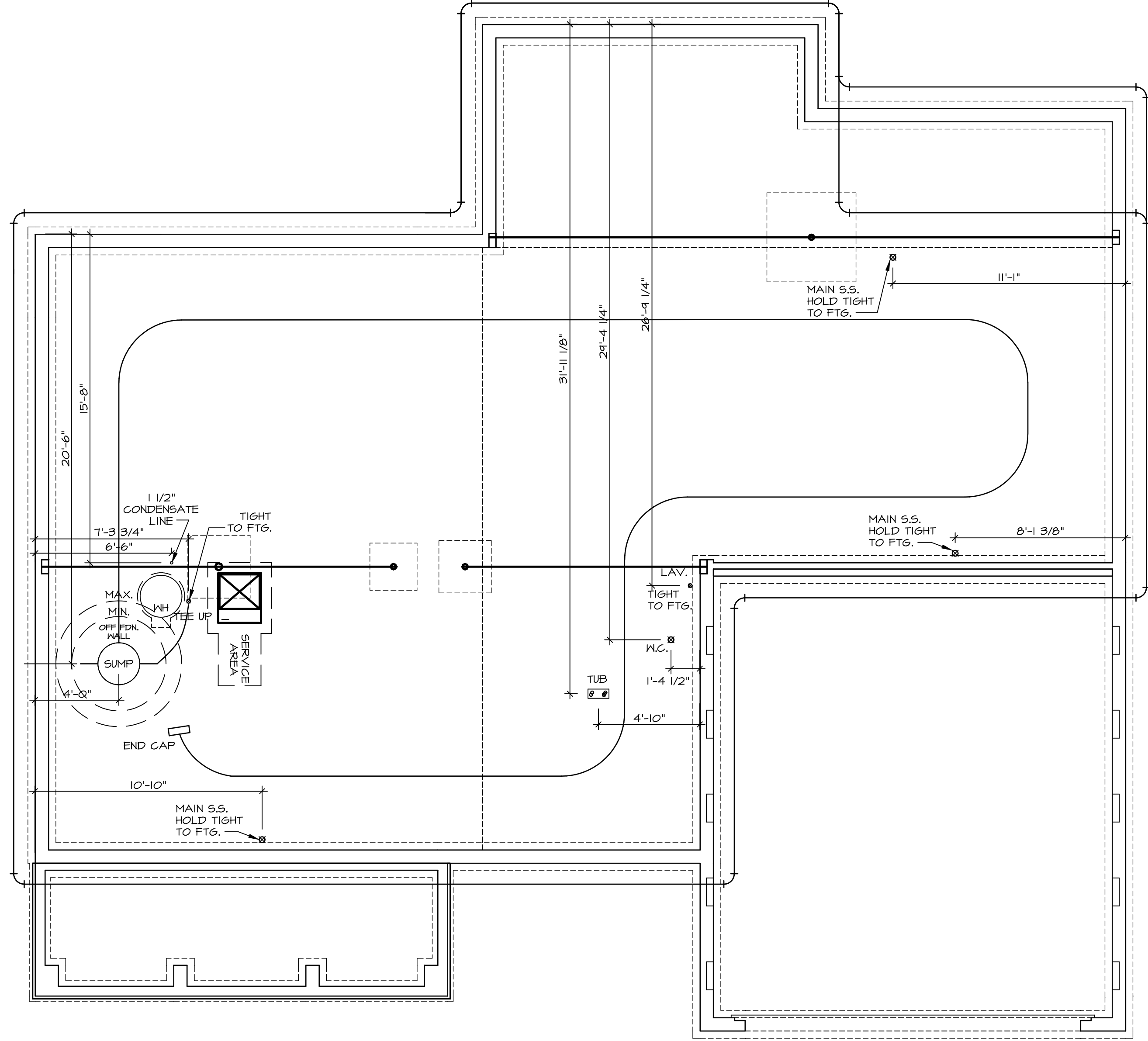
*2 windows*

SHEET NO. <b>A-7</b>	MODEL <b>RAVENNA</b>	SET NO. <b>RV000</b>	REVISIONS
	DRAWING TITLE <b>BASEMENT FLOOR PLAN</b>	VERSION <b>03</b>	DATE <b>06/22/14</b>
OPTION DESCRIPTION <b>44</b>	DRAWN BY	DATE	REVISIONS
	OPTION	DATE	DESCRIPTION



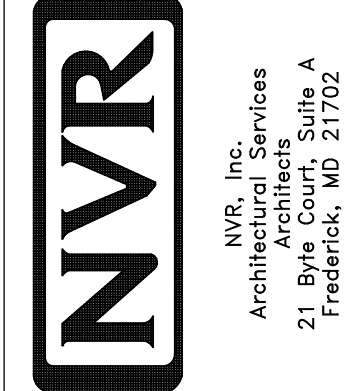
NVR, Inc., owner, expressly reserves the common law copyright in these plans. These plans are not to be reproduced, stored in a retrieval system, or transmitted in any form or by any means, electronic, mechanical, photocopying, recording, or otherwise, without the prior written consent of NVR, Inc.





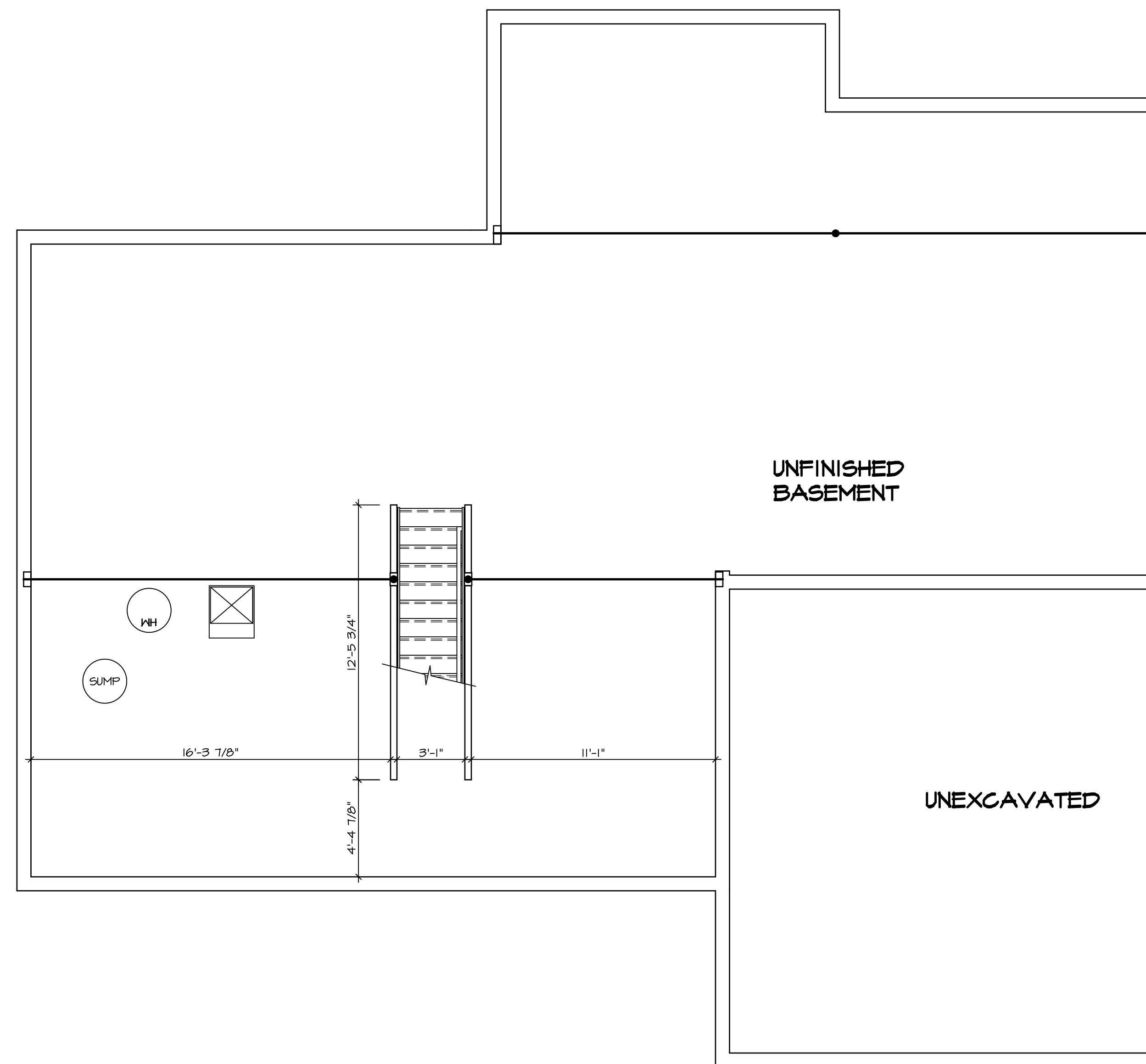
1 PLUMBING PLAN  
 A-5 SCALE: 1/4" = 1'-0"

SHEET NO. <b>A-5</b>	MODEL <b>RAVENNA</b>	SET NO. RYN00
OPTION DESCRIPTION <b>41</b>	DRAWING TITLE <b>PLUMBING PLAN</b>	VERSION <b>03</b>
	DATE:	DRAWN BY:
	OPTION	



NVR, Inc., owner, expressly reserves its copyright in these plans. These plans are not to be reproduced, changed, copied, or otherwise used without the prior written consent of NVR, Inc.

REV. NO.	DATE	REMARKS



1 BASEMENT FLOOR PLAN  
A-7 SCALE: 1/4" = 1'-0"

**LEGEND**

	BEARING WALL
	NON BEARING WALL
	INDICATES BEARING FROM POINT-LOAD ABOVE
	JACKS
	BEAM/HEADER
	PAD FOOTING
	STEEL COLUMN
	PORTAL FRAME
	JOIST/TRUSS
	LVL
	ENGINEERING PAGE NUMBER

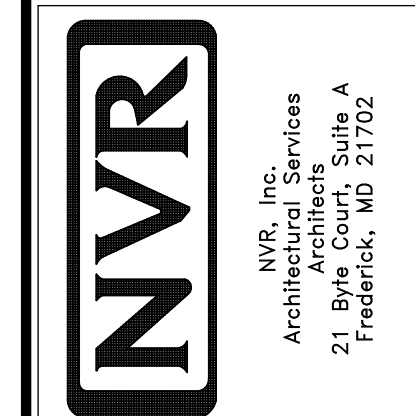
SEE FC DETAILS FOR FRAMING CONNECTORS

- FLOOR PLAN NOTES**
- ALL HEADERS ARE (2) 2x6 w/ 2x4 WALLS OR (3) 2x6 w/ 2x6 WALLS, UNLESS OTHERWISE NOTED.
  - ALL HEADERS TO HAVE (1) 2x4 OR 2x6 JACK EACH END, UNLESS OTHERWISE NOTED.
  - ALL EXTERIOR WALLS TO BE 4" AND ALL INTERIOR WALLS TO BE 3 1/2" UNLESS OTHERWISE NOTED.
  - HATCHED AREAS INDICATE DROPPED CEILINGS. ALL DROPPED CEILINGS ARE 12" UNLESS OTHERWISE NOTED. SEE "BRACED WALL PANEL DETAIL SHEET" FOR SPECIAL WALL FRAMING LOCATIONS AND HEADER SIZES, IF APPLICABLE.
  - SEE STANDARD DETAIL CATEGORY "IT" SHEET(S) FOR INTERIOR TRIM DETAILS.
  - SEE ARCHITECTURAL DETAIL SHEET "AD" FOR HOUSE SPECIFIC INTERIOR TRIM OPTION TABLE.
  - ALL WINDOWS HAVE 7'-0 1/2" HEADER HEIGHT UNLESS OTHERWISE NOTED.

- GYPSUM NOTES**
- AT GARAGE:  
GYPSUM BOARD AT COMMON WALLS, CEILINGS, BEAM WRAPS AND SUPPORTS PER STANDARD DETAIL FA-1(b) FIRE ASSEMBLIES OR AS REQUIRED BY LOCAL CODE.
- AT STAIRS:  
1/2" GYPSUM BOARD AT UNDERSIDE OF STAIRS AND WALLS IN CLOSET

SHEET NO. <b>A-7</b>	MODEL <b>RAVENNA</b>	SET NO. RYNOO	REV. NO.	DATE	REMARKS
		VERSION 03	1	08/02/18	TH - DRAWING ALIGNMENT
DRAWING TITLE BASEMENT FLOOR PLAN		DRAWN BY			
OPTION DESCRIPTION		DATE:			
4-4		OPTION			

NVR, Inc., owner, expressly reserves its copyright in these plans. These plans are not to be reproduced, changed, adapted, or otherwise used in any way without the prior written consent of NVR, Inc.



FIRST FLOOR JACK SCHEDULE				
IDENTIFIER	DESCRIPTION	OPTIONS	ENG. NUM.	REMARKS
J01	JACK - (3) 2X6 SFF STUD GRADE	MAA	112	
J02	JACK - (3) 2X6 SFF STUD GRADE	MAA	112	
J03	JACK - (3) 2X4 SFF STUD GRADE	SRN, SQK, MAA	116	FULL HEIGHT STUDS
J04	JACK - (3) 2X4 SFF STUD GRADE	SRN, SQK, MAA	116	FULL HEIGHT STUDS
J15	JACK - (4) 2X4 SFF STUD GRADE	BAR	133	
J16	JACK - (4) 2X4 SFF STUD GRADE	BAR	133	
J25	JACK - (4) 2X4 SFF STUD GRADE	MAV, ELA, ELB, ELC, ELL, GCB	114	
J26	JACK - (4) 2X4 SFF STUD GRADE	MAV, ELA, ELB, ELC, ELL, GCB	114	
J27	JACK - (2) 2X4 SFF STUD GRADE	MAV, GCB	102	
J30	JACK - (2) 2X4 SFF STUD GRADE	MAV, GCB	102	
J65	JACK - (2) 2X4 SFF STUD GRADE	BAR	112	
J66	JACK - (2) 2X4 SFF STUD GRADE	BAR	112	
J78	JACK - (3) 2X4 SFF STUD GRADE	SQK OR SRN	110	

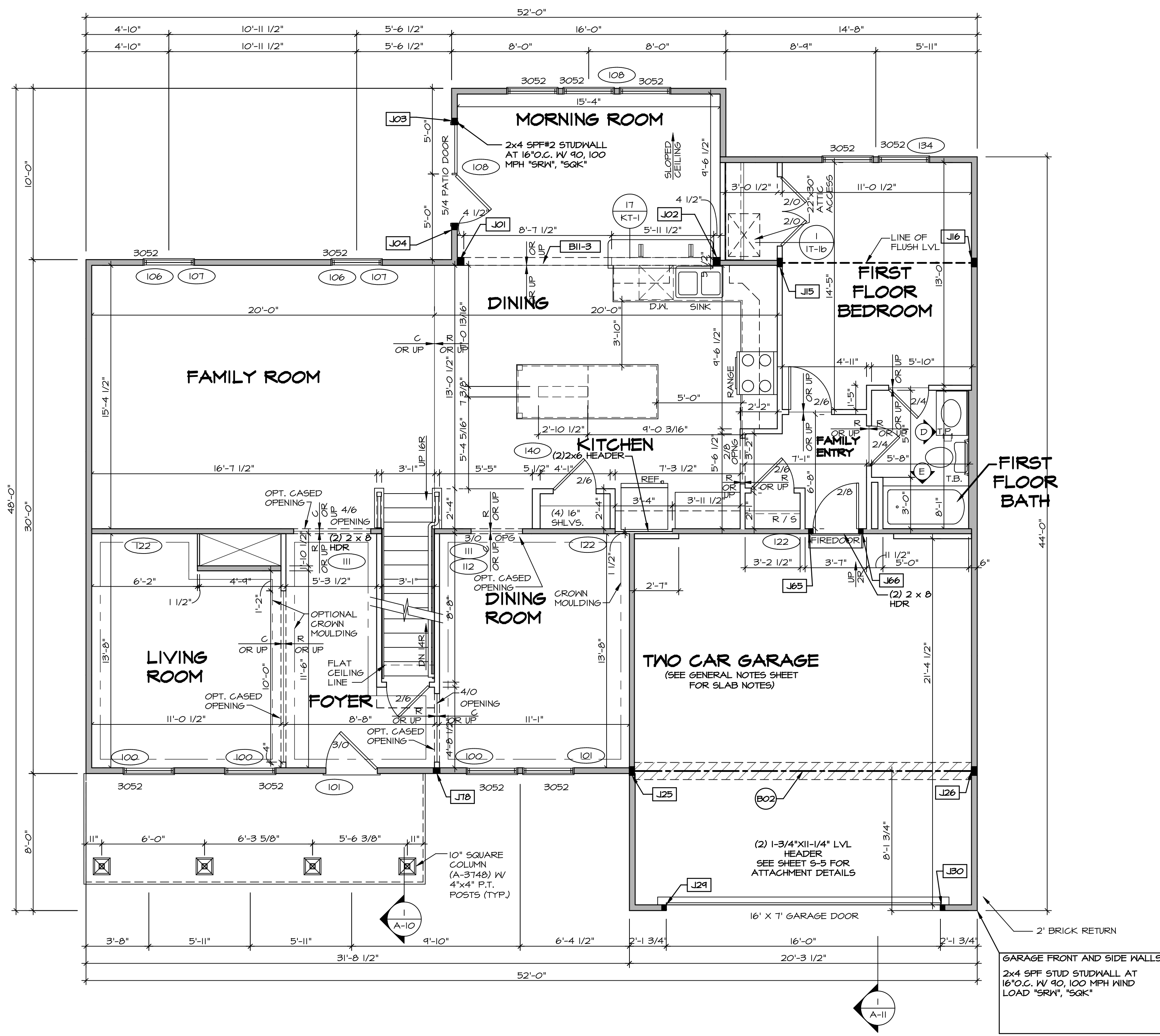
LVL PLY TO PLY FASTENING SCHEDULE:				
1.A	- (2) PLY UP TO AND INCLUDING 11 7/8" TALL; FASTEN PLYS W/ (2) ROWS 16D NAILS AT 12" O.C.			
2.A	- (2) PLY 14" TO AND 18" TALL (INCLUSIVE); FASTEN PLYS W/ (3) ROWS 16D NAILS AT 12" O.C.			
3.A	- (2) PLY 20" TALL AND OVER; FASTEN PLYS W/ (4) ROWS 16D NAILS AT 12" O.C.			
4.A	- (3) PLY UP TO AND INCLUDING 11 7/8" TALL; FASTEN PLYS W/ (2) ROWS 16D NAILS AT 12" O.C. FROM EACH SIDE			
5.A	- (3) PLY 14" TO AND 18" TALL (INCLUSIVE); FASTEN PLYS W/ (3) ROWS 16D NAILS AT 12" O.C. FROM EACH SIDE			
6.A	- (3) PLY 20" TALL AND OVER; FASTEN PLYS W/ (4) ROWS 16D NAILS AT 12" O.C. FROM EACH SIDE			

FIELD INSTALLED FIRST FLOOR BEAM/HEADER SCHEDULE					
IDENTIFIER	DESCRIPTION	LENGTH	OPTIONS	ENG. NUM.	REMARKS
B02	BEAM STEEL - W12X19	20'-2 1/2"	MAV, ELA, ELB, ELC, ELL, GCB	145	
B11-3	LVL - 16	15'-4"	MAA	112	3 PLY, 5.A

LEGEND	
	BEARING WALL
	NON BEARING WALL
	INDICATES BEARING FROM POINT-LOAD ABOVE
	JACKS
	BEAM/HEADER
	PAD FOOTING
	STEEL COLUMN
	PORTAL FRAME
	JOIST/TRUSS
	LVL
	ENGINEERING PAGE NUMBER

- FLOOR PLAN NOTES**
- ALL HEADERS ARE (2) 2x6 W/ 2x4 WALLS OR (3) 2x6 W/ 2x6 WALLS, UNLESS OTHERWISE NOTED.
  - ALL HEADERS TO HAVE (1) 2x4 OR 2x6 JACK AND KING STUD EACH END, UNLESS OTHERWISE NOTED.
  - ALL EXTERIOR WALLS TO BE 4" W/ OSB OR 3 1/2" W/ T-PLY; ALL INTERIOR WALLS TO BE 3 1/2", UNLESS OTHERWISE NOTED.
  - HATCHED AREAS INDICATE DROPPED CEILINGS. ALL DROPPED CEILINGS ARE 12" UNLESS OTHERWISE NOTED.
  - SEE "BRACED WALL PANEL DETAIL SHEET" FOR SPECIAL WALL FRAMING LOCATIONS AND HEADER SIZES, IF APPLICABLE.
  - SEE STANDARD DETAIL CATEGORY "IT" SHEET(S) FOR INTERIOR TRIM DETAILS.
  - SEE ARCHITECTURAL DETAIL SHEET "AD" FOR HOUSE SPECIFIC INTERIOR TRIM OPTION TABLE.
  - ALL WINDOWS HAVE 1"-0 1/2" HEADER HEIGHT UNLESS OTHERWISE NOTED.
  - ALL HEADERS IN NON-BEARING WALLS SHALL BE A SINGLE FLAT 2X4 OR 2X6 ATTACHED TO CRIPPLES ABOVE, UNLESS OTHERWISE NOTED.

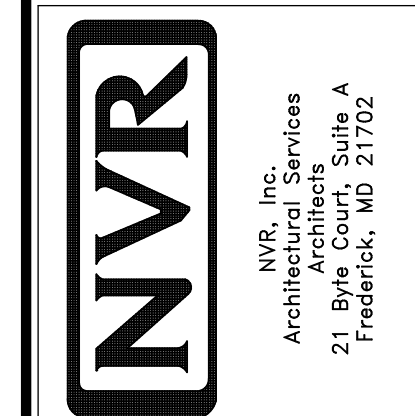
- GYPSUM NOTES**
- AT GARAGE:  
GYPSUM BOARD AT COMMON WALLS, CEILING, BEAM WRAPS AND SUPPORTS PER STANDARD DETAIL FA-1(b) FIRE ASSEMBLIES OR AS REQUIRED BY LOCAL CODE.
- AT STAIRS:  
1/2" GYPSUM BOARD AT UNDERSIDE OF STAIRS AND WALLS IN CLOSET



**FIRST FLOOR PLAN**  
SCALE: 1/4" = 1'-0"

REV. NO.	DATE	DESCRIPTION
1	08/02/16	TH - DRAWING ALIGNMENT
2	07/11/17	5LS - T-PLY CONVERSION PROJECT

NVR, Inc., owner, expressly reserves the copyright in these plans. These plans are not to be reproduced, changed, copied, or otherwise used in any way without the written consent of NVR, Inc.



SET NO.	RYNOO
VERSION	03
DRAWN BY	
DATE:	
OPTION	

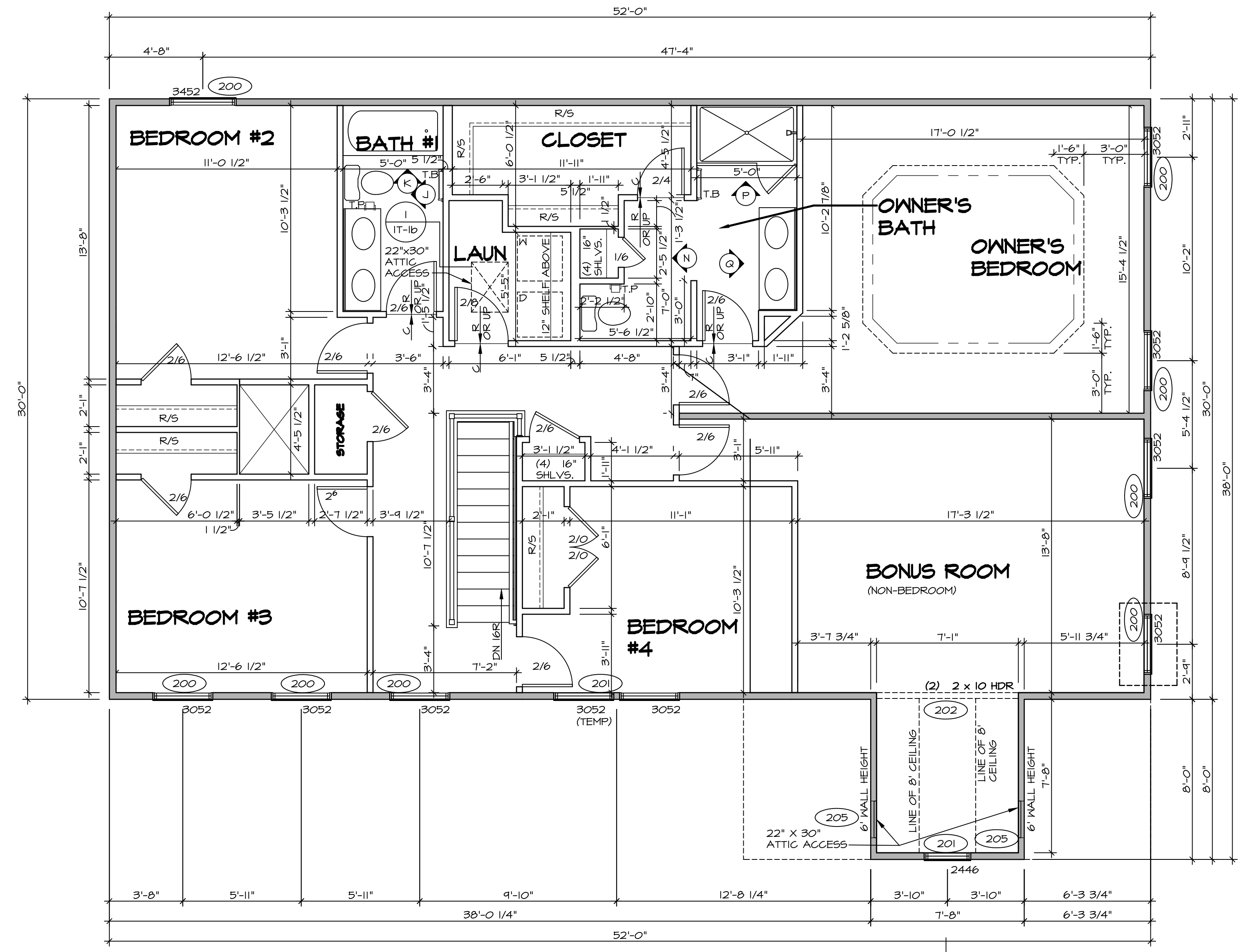
SHEET NO.	MODEL	DRAWING TITLE	OPTION DESCRIPTION
A-8	RAVENNA	FIRST FLOOR PLAN	
45			

SECOND FLOOR JACK SCHEDULE				
IDENTIFIER	DESCRIPTION	OPTIONS	ENG. NUM.	REMARKS

LEGEND	
	BEARING WALL
	NON BEARING WALL
	INDICATES BEARING FROM POINT-LOAD ABOVE
	JACKS
	BEAM/HEADER
	PAD FOOTING
	STEEL COLUMN
	PORTAL FRAME
	JOIST/TRUSS
	LVL
	ENGINEERING PAGE NUMBER

SEE FC DETAILS FOR FRAMING CONNECTORS

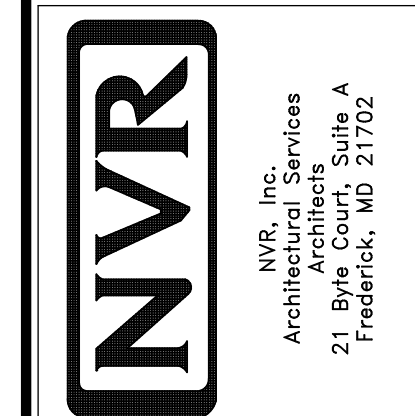
- FLOOR PLAN NOTES**
- ALL HEADERS ARE (2) 2x6 w/ 2x4 WALLS OR (3) 2x6 w/ 2x6 WALLS, UNLESS OTHERWISE NOTED.
  - ALL HEADERS TO HAVE (1) 2x4 OR 2x6 JACK AND KING STUD EACH END, UNLESS OTHERWISE NOTED.
  - ALL EXTERIOR WALLS TO BE 4" w/ OSB OR 3 1/2" w/ T-PLY; ALL INTERIOR WALLS TO BE 3 1/2", UNLESS OTHERWISE NOTED.
  - HATCHED AREAS INDICATE DROPPED CEILINGS. ALL DROPPED CEILINGS ARE 12" UNLESS OTHERWISE NOTED.
  - SEE "BRACED WALL PANEL DETAIL SHEET" FOR SPECIAL WALL FRAMING LOCATIONS AND HEADER SIZES, IF APPLICABLE.
  - SEE STANDARD DETAIL CATEGORY "IT" SHEET(S) FOR INTERIOR TRIM DETAILS.
  - SEE ARCHITECTURAL DETAIL SHEET "AD" FOR HOUSE SPECIFIC INTERIOR TRIM OPTION TABLE.
  - ALL WINDOWS HAVE 1'-0 1/2" HEADER HEIGHT UNLESS OTHERWISE NOTED.
  - ALL HEADERS IN NON-BEARING WALLS SHALL BE A SINGLE FLAT 2x4 OR 2x6 ATTACHED TO CRIPPLES ABOVE, UNLESS OTHERWISE NOTED.



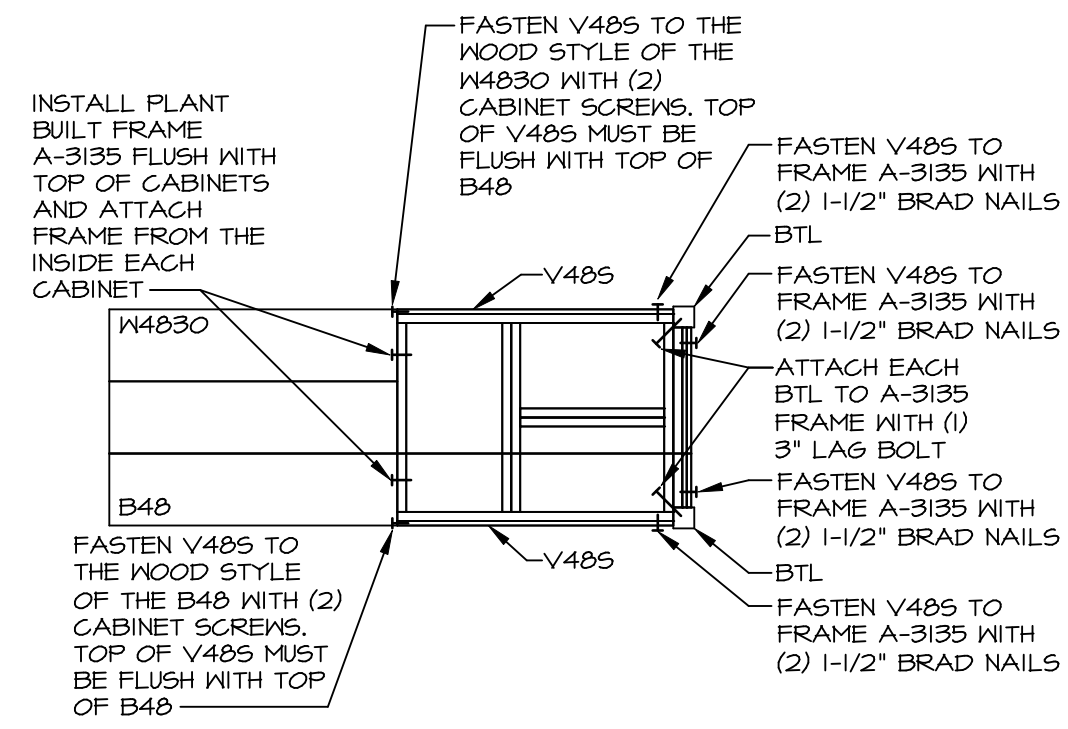
**SECOND FLOOR PLAN**  
SCALE: 1/4" = 1'-0"

REV. NO.	DATE	REMARKS
1	08/02/16	TH - DRAWING ALIGNMENT
2	6/28/17	TRV - REVISED ROOF ACCESS PANELS
3	07/11/17	SL5 - T-PLY CONVERSION PROJECT

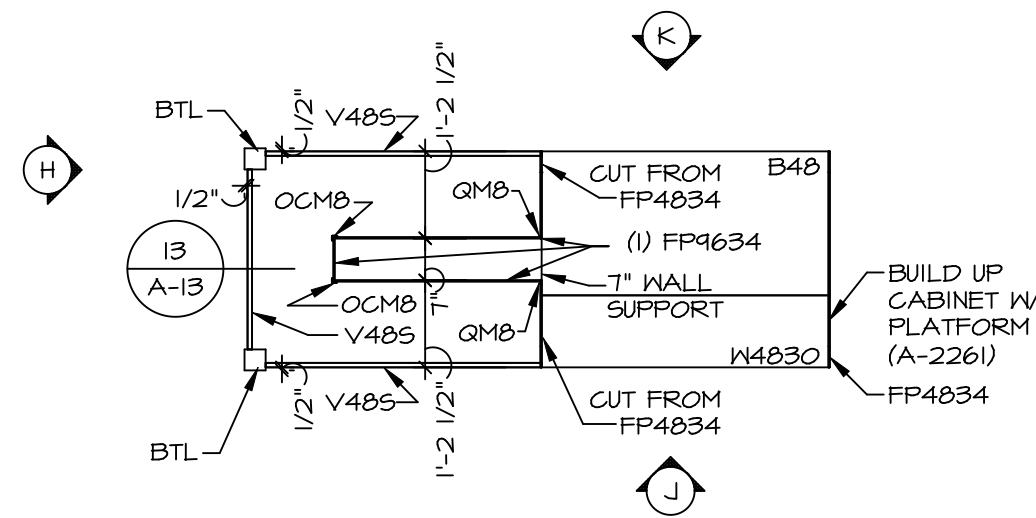
NVR, Inc., owner, expressly warrants the completeness and accuracy of the information contained in these plans. These plans are not to be reproduced, changed, stamped in any way, or otherwise used without the written consent of NVR, Inc.



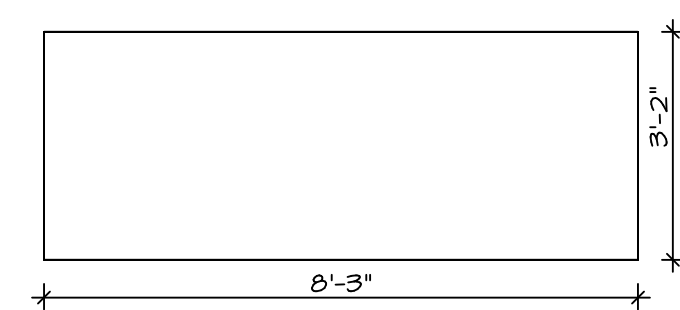
MODEL	SET NO. RYNOO
DRAWING TITLE	VERSION 03
OPTION DESCRIPTION	DRAWN BY
	DATE:
	OPTION
SHEET NO.	A-9
	49



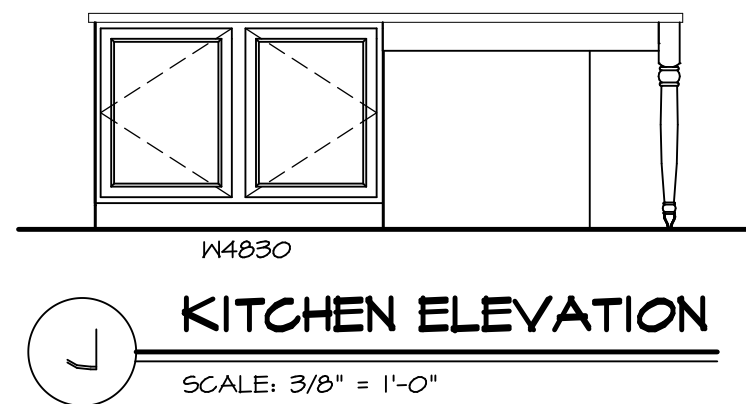
13  
A-13  
**COUNTERTOP SUPPORT FRAME**  
SCALE: 3/8" = 1'-0"



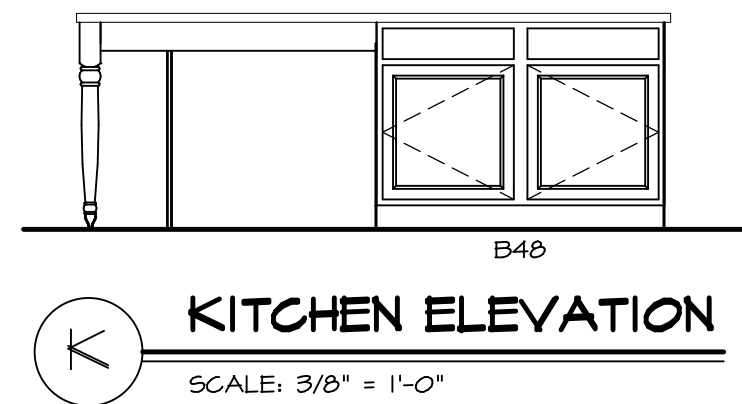
11  
A-13  
**KITCHEN CABINET PLAN - KC-3217**  
SCALE: 3/8" = 1'-0" GOURMET KITCHEN ISLAND \*KFF\*



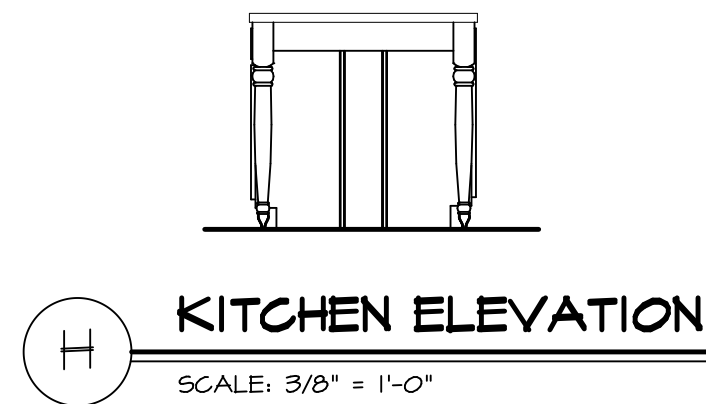
12  
A-13  
**COUNTERTOP PLAN - KT-3217**  
SCALE: 3/8" = 1'-0" GOURMET KITCHEN ISLAND \*KFF\*



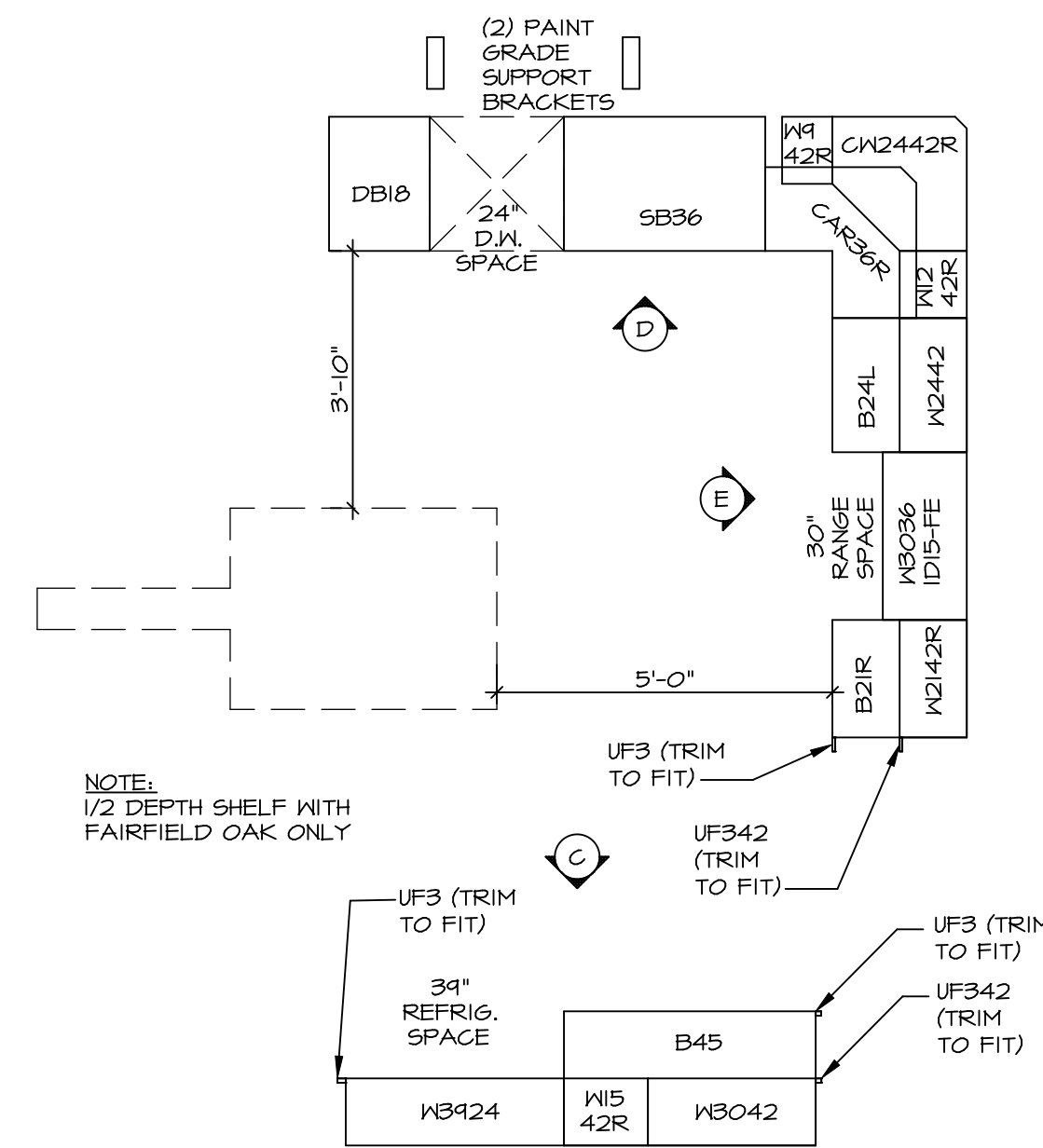
J  
**KITCHEN ELEVATION**  
SCALE: 3/8" = 1'-0"



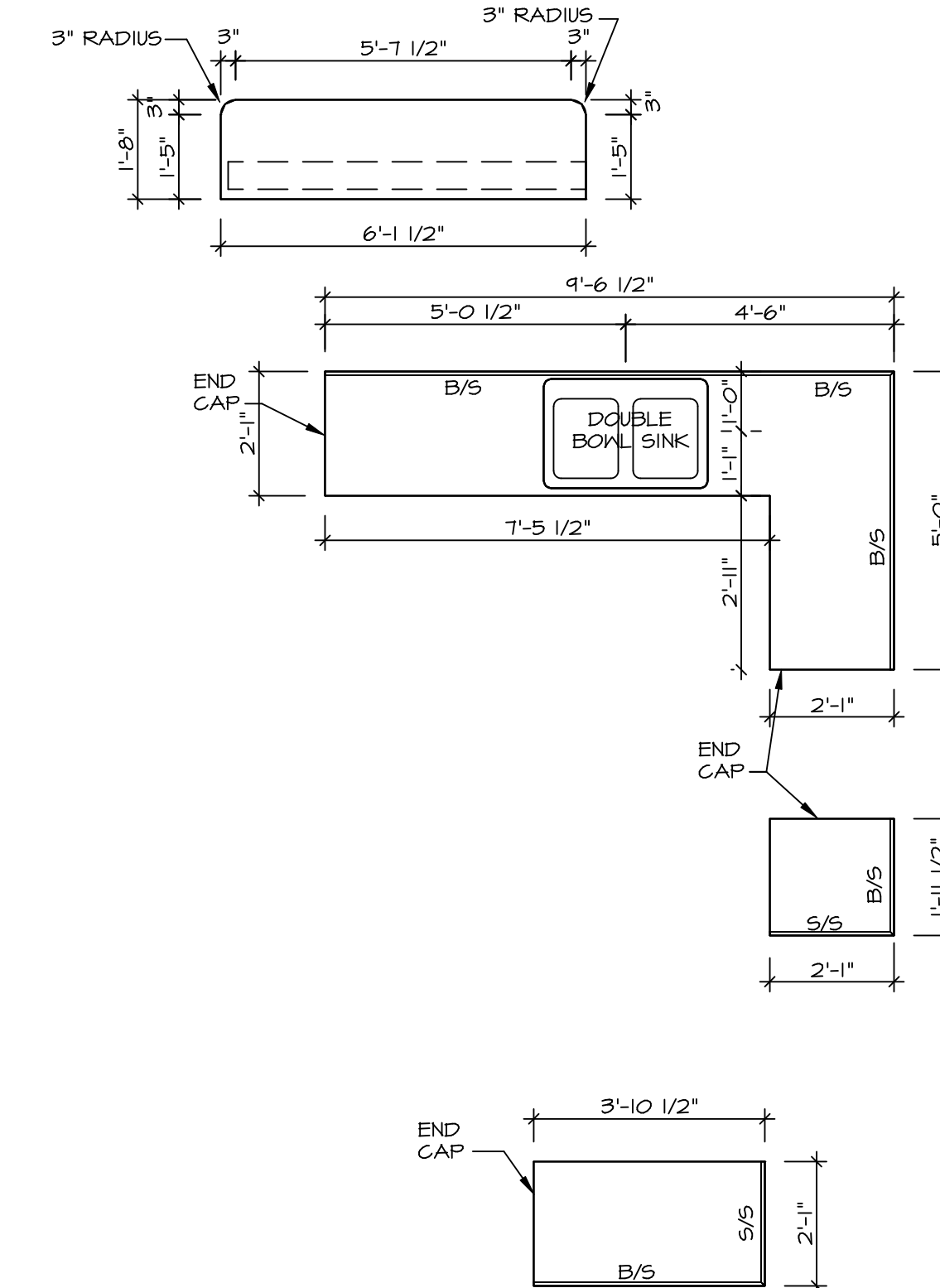
K  
**KITCHEN ELEVATION**  
SCALE: 3/8" = 1'-0"



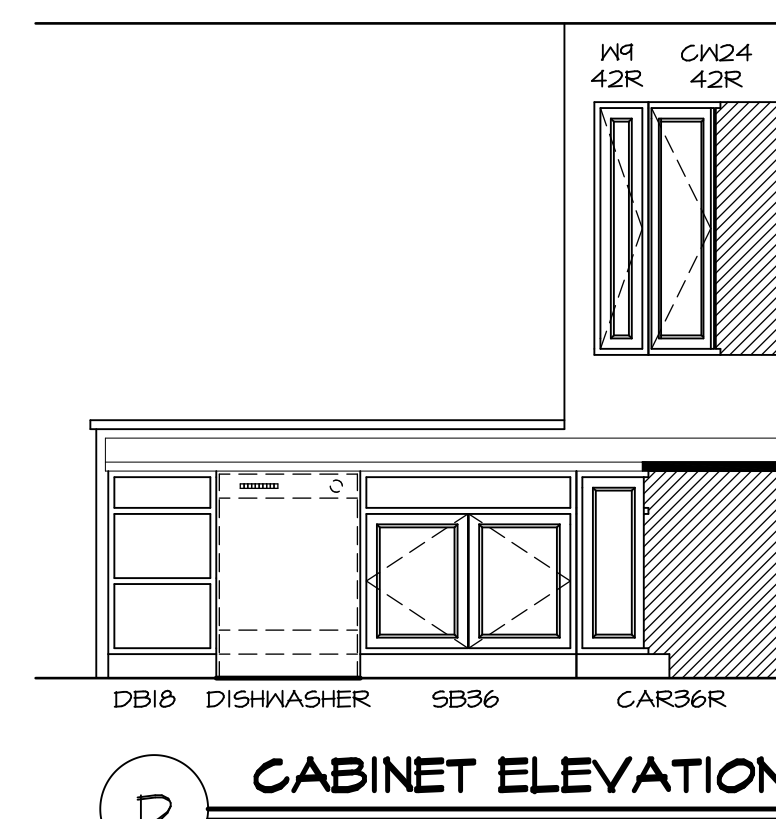
H  
**KITCHEN ELEVATION**  
SCALE: 3/8" = 1'-0"



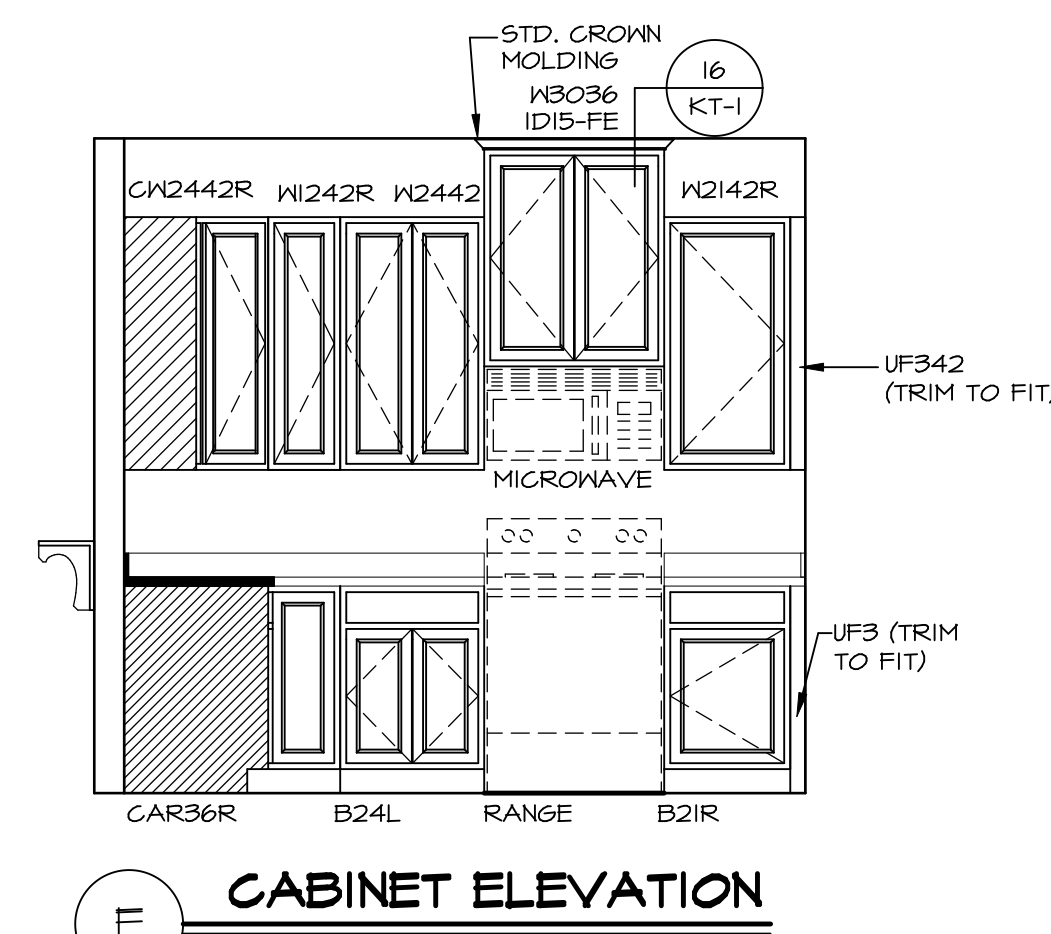
3  
A-13  
**KITCHEN CABINET PLAN - KC-2856**  
SCALE: 3/8" = 1'-0"



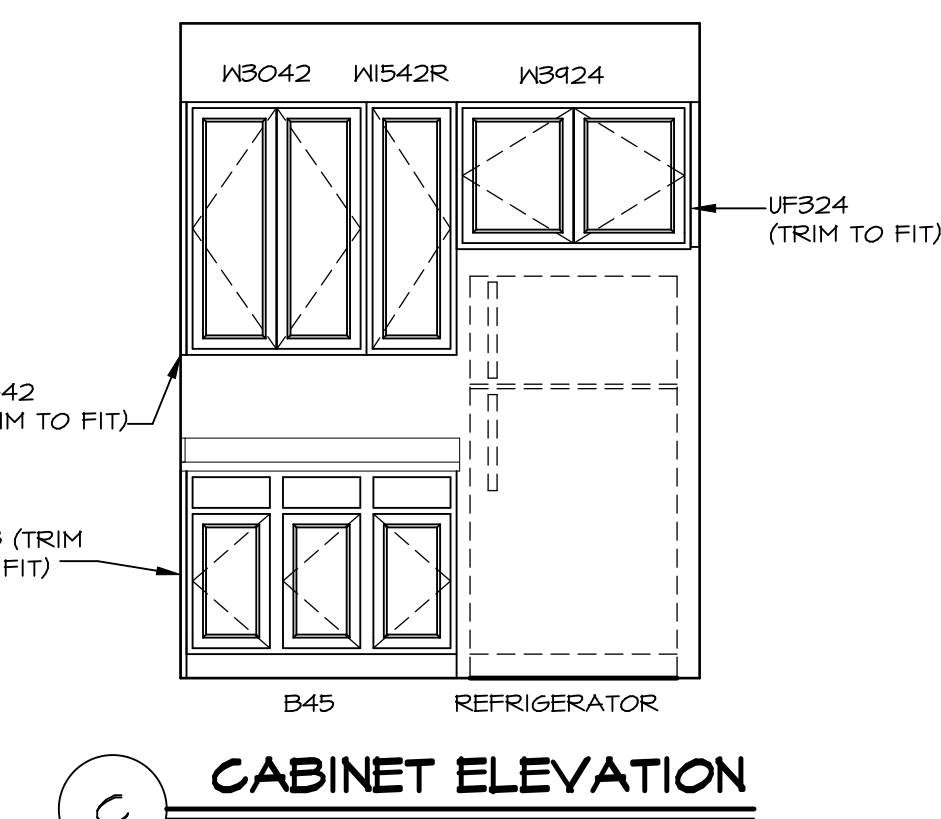
4  
A-13  
**KITCHEN COUNTERTOP PLAN - KT-2856**  
SCALE: 3/8" = 1'-0"



D  
**CABINET ELEVATION**  
SCALE: 3/8" = 1'-0"

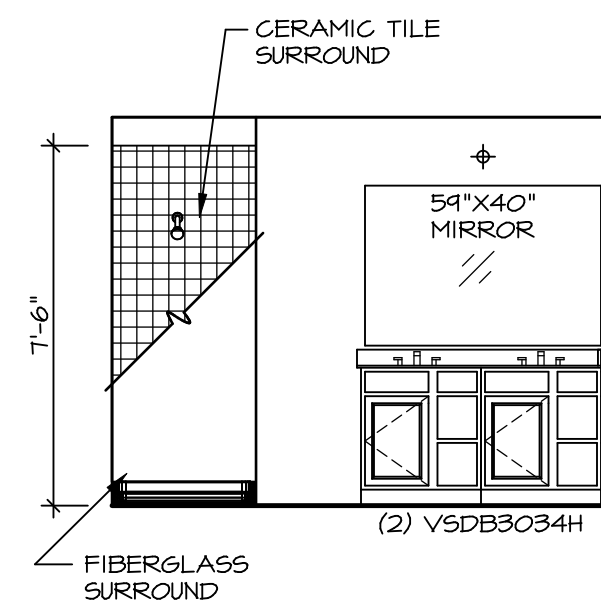


E  
**CABINET ELEVATION**  
SCALE: 3/8" = 1'-0"

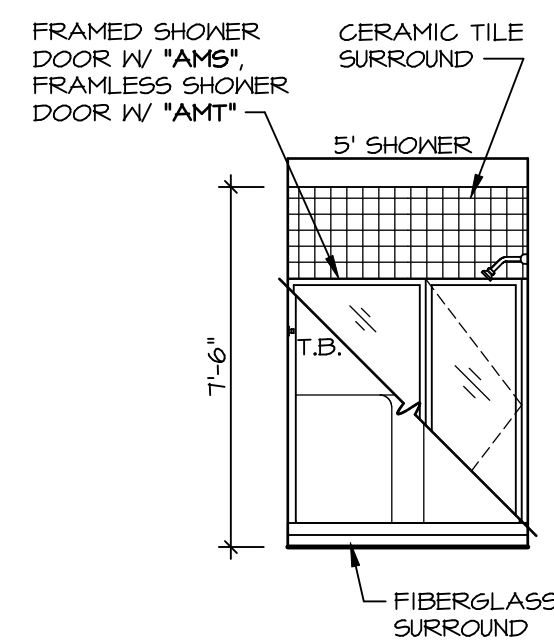


C  
**CABINET ELEVATION**  
SCALE: 3/8" = 1'-0"

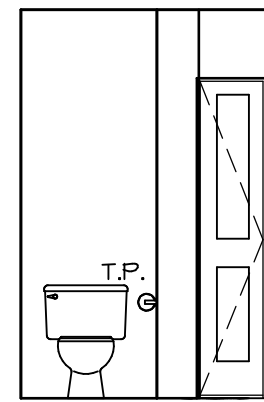
SHEET NO. <b>A-13</b>	MODEL <b>RAVENNA</b>	SET NO. RYNOO	OPTION
	DRAWING TITLE <b>KITCHEN PLAN</b>	VERSION <b>03</b>	
60	OPTION DESCRIPTION	DRAWN BY	DATE
REMARKS			
REV. NO. DATE			
<p>NVR, Inc., owner, expressly reserves its copyright in these plans. These plans are not to be reproduced, changed, copied, or otherwise used in any way without the written consent of NVR, Inc.</p>			
<p><b>NVR</b> NVR, Inc. Architectural Services 21 Bayview Plaza, A Frederick, MD 21702</p>			
<p>C:\NVR\Solves\RAVENNA_RYN00_03\DCY-CH-KIT-W207\957513\Sheets\Lot_Specifica_60_A-13_KIT_LS.dwg 09/28/18 - 1:09 PM</p>			



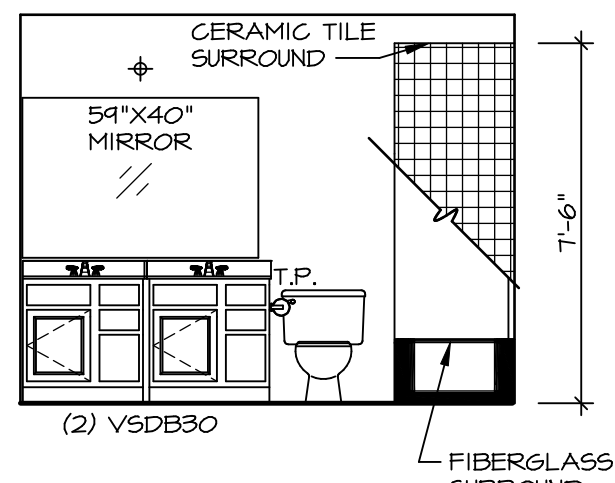
**Q OWNER'S BATH**  
SCALE: 1/4" = 1'-0"



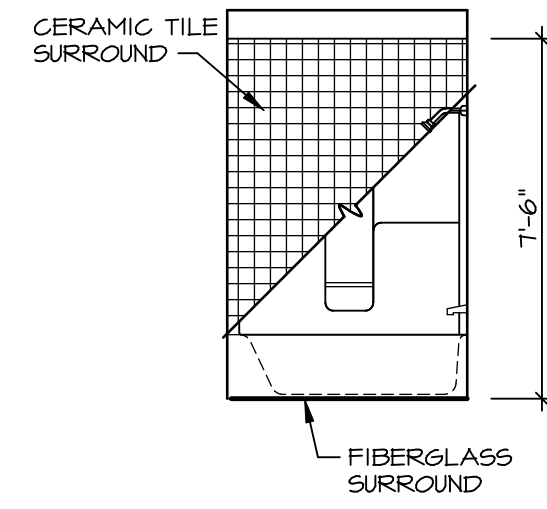
**P OWNER'S BATH**  
SCALE: 1/4" = 1'-0"



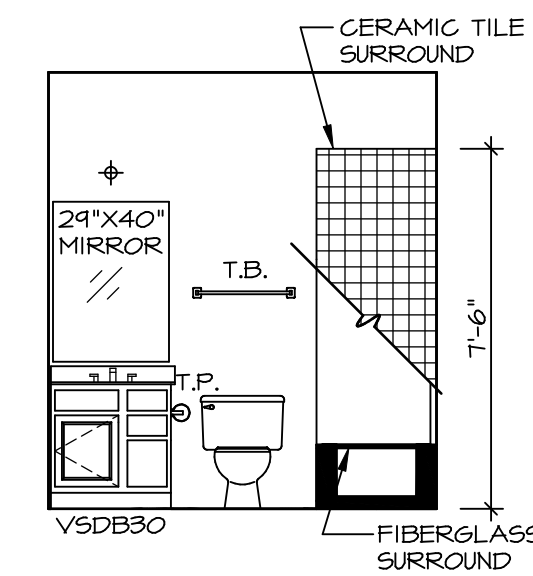
**N OWNER'S BATH**  
SCALE: 1/4" = 1'-0"



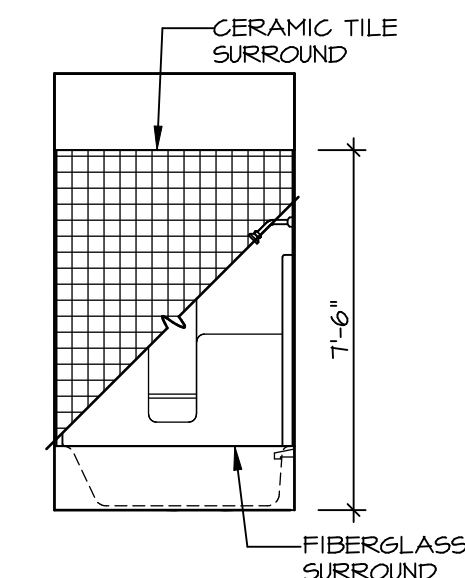
**J BATH #1**  
SCALE: 1/4" = 1'-0"



**K BATH #1**  
SCALE: 1/4" = 1'-0"



**D FIRST FLOOR BATH**  
SCALE: 1/4" = 1'-0"



**E FIRST FLOOR BATH**  
SCALE: 1/4" = 1'-0"

**NOTES:**

1. TEMPERED GLASS SHOWER ENCLOSURE WITH SWING DOOR OR OPTIONAL SLIDING DOOR BY DIVISION
2. TUB ACCESS PANELS PROVIDED AS NEEDED, ALL MATERIALS BY DIVISION
3. REFER TO SHEET IT-2 FOR TUB AND SHOWER DETAILS.
4. ALL VSDB24-42 DRAWERS TO BE SET ON RIGHT HAND.
5. BATH ELEVATIONS ARE SHOWN PER PLAN.

SHEET NO.	MODEL	SET NO.	OPTION
A-14	RAVENNA	RVN00_03	OPTION
	DRAWING TITLE	VERSION	DATE
	BATH ELEVATIONS	03	
	OPTION DESCRIPTION	DRAWN BY	

**NVR**  
NVR, Inc.  
Architectural Services  
Architects  
21 Park Ave., Ste. A  
Frederick, MD 21702

NVR, Inc., owner, expressly reserves its copyright in these plans. These plans are not to be reproduced, changed, copied, or otherwise used in any way without the written consent of NVR, Inc.

REV. NO.	DATE	REMARKS
1	08/02/16	TH - DRAINING ALIGNMENT