

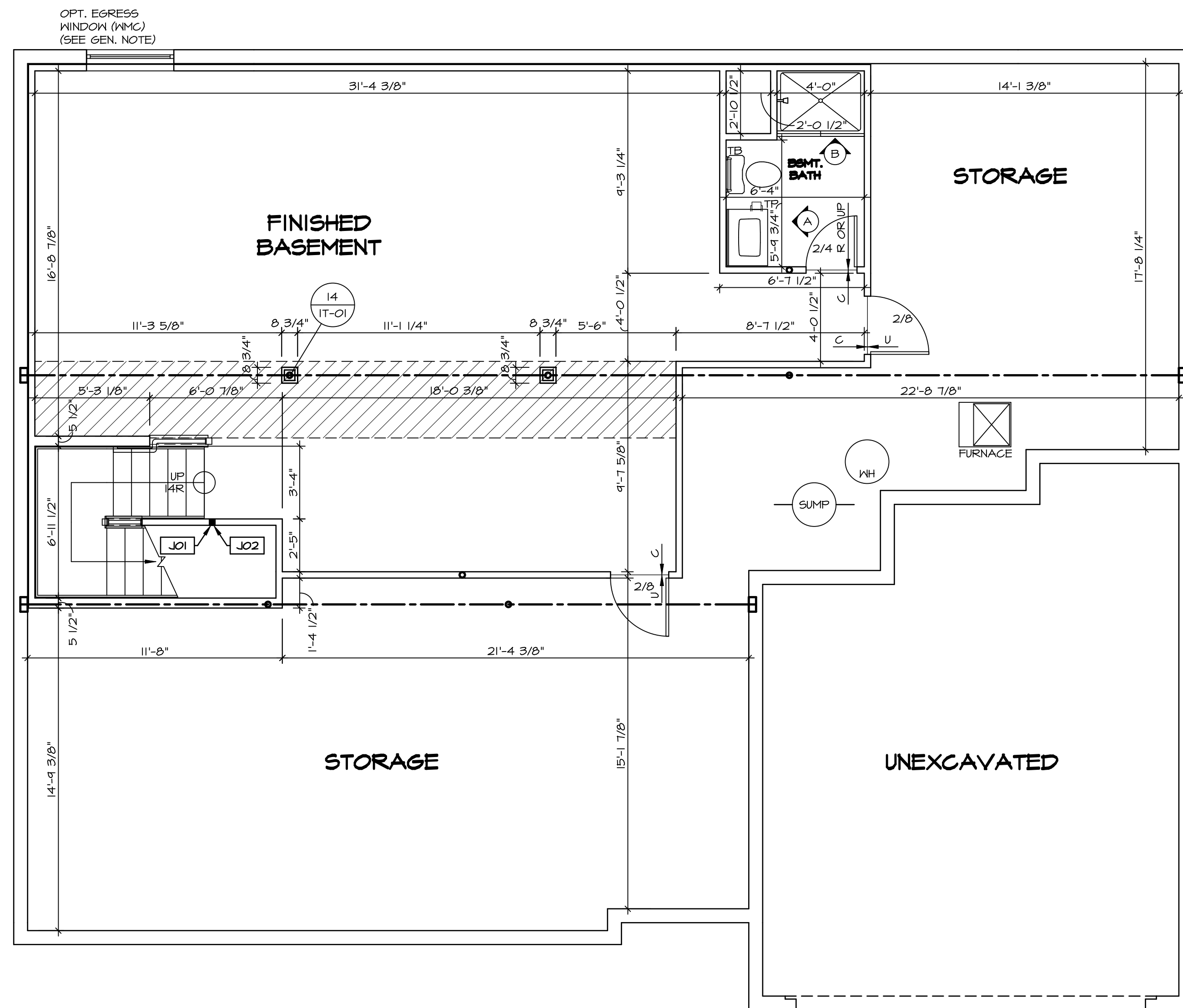
**PLUMBING PLAN**  
SCALE: 1/4" = 1'-0"

SHEET NO. <b>A-5</b>	MODEL <b>NORMANDY</b>	SET NO. NRM00	VERSION 01
	DRAWING TITLE <b>PLUMBING PLAN</b>	DRAWN BY RJC	
	OPTION DESCRIPTION	DATE 5/14/15	OPTION
31			

**NVR**  
NVR, Inc.  
Architectural Services  
5285 Westheimer Road, Suite 100  
Frederick, MD 21703

NVR, Inc., owner, expressly reserves its copyright in these plans. These plans are not to be reproduced, changed, copied, or used in any way without the prior written consent of NVR, Inc.

REV. NO.	DATE	REMARKS



OPT. EGRESS WINDOW (NMG) (SEE GEN. NOTE)

LEGEND	
	BEARING WALL
	NON BEARING WALL
	INDICATES BEARING FROM POINT-LOAD ABOVE
	JACKS
	BEAM/HEADER
	PAD FOOTING
	STEEL COLUMN
	PORTAL FRAME
	JOIST/TRUSS
	LVL
	ENGINEERING PAGE NUMBER

SEE FC DETAILS FOR FRAMING CONNECTORS

- ### FLOOR PLAN NOTES
- ALL HEADERS ARE (2) 2x6 w/ 2x4 WALLS OR (3) 2x6 w/ 2x6 WALLS, UNLESS OTHERWISE NOTED.
  - ALL EXTERIOR WALLS TO BE 4" AND ALL INTERIOR WALLS TO BE 3 1/2", UNLESS OTHERWISE NOTED.
  - HATCHED AREAS INDICATE DROPPED CEILING. ALL DROPPED CEILING ARE 12" UNLESS OTHERWISE NOTED.
  - SEE "BRACED WALL PANEL DETAIL SHEET" FOR SPECIAL WALL FRAMING LOCATIONS AND HEADER SIZES, IF APPLICABLE.
  - SEE STANDARD DETAIL CATEGORY "IT" SHEET(S) FOR INTERIOR TRIM DETAILS.
  - SEE ARCHITECTURAL DETAIL SHEET "AD" FOR HOUSE SPECIFIC INTERIOR TRIM OPTION TABLE.
  - ALL WINDOWS HAVE 7'-0 1/2" HEADER HEIGHT UNLESS OTHERWISE NOTED.

- ### GYPHUM NOTES
- AT GARAGE:  
GYPSUM BOARD AT COMMON WALLS, CEILING, BEAM WRAPS AND SUPPORTS PER STANDARD DETAIL FA-1(b) FIRE ASSEMBLIES OR AS REQUIRED BY LOCAL CODE.
- AT STAIRS:  
1/2" GYPSUM BOARD AT UNDERSIDE OF STAIRS AND WALLS IN CLOSET

### BASEMENT JACK SCHEDULE

IDENTIFIER	DESCRIPTION	OPTIONS	ENG. NUM.	REMARKS
J01	JACK - 2x4 SPF STUD GRADE		B10	
J02	JACK - 2x4 SPF STUD GRADE		B22	

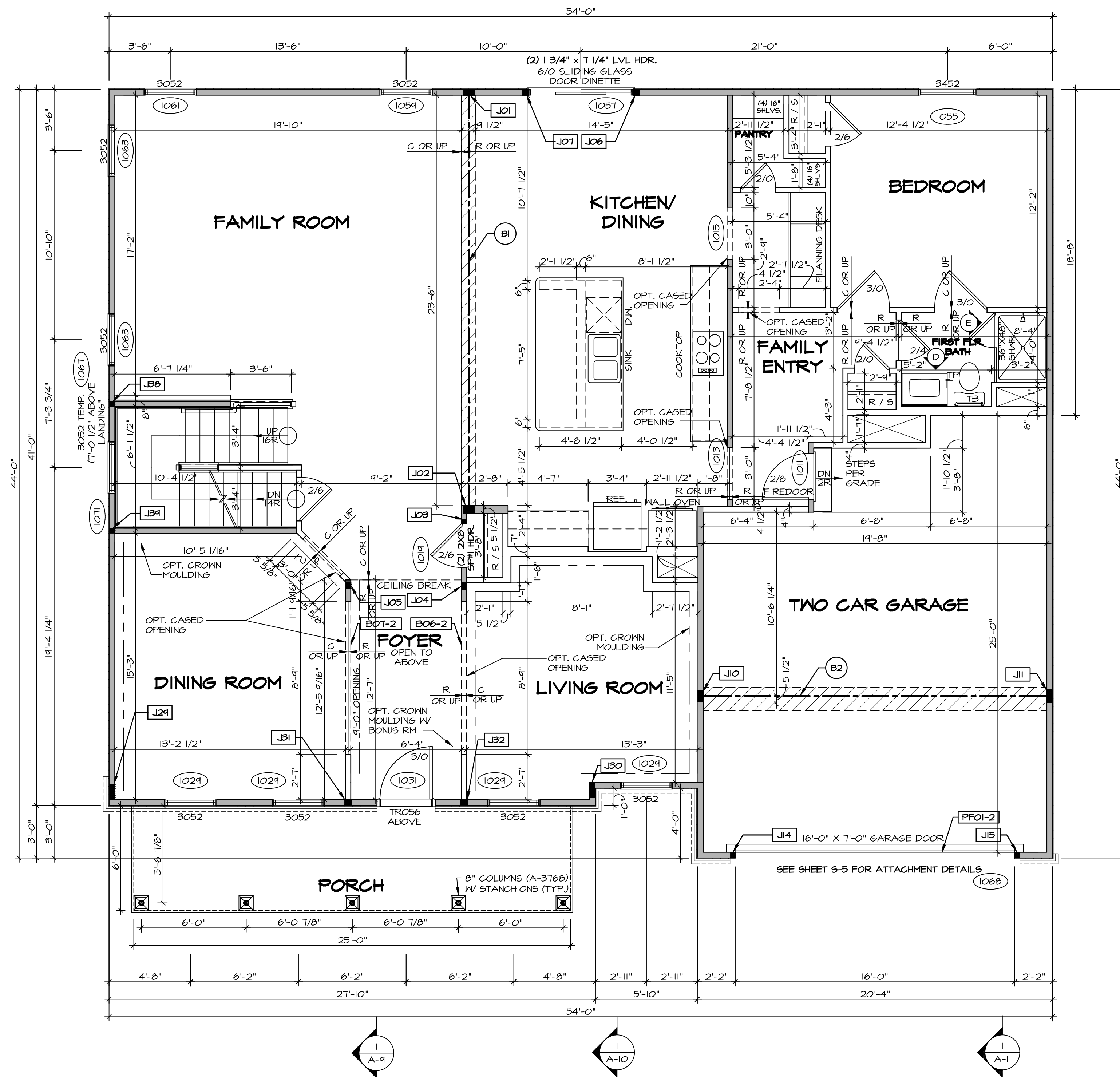
SHEET NO.	MODEL	SET NO.	VERSION	DATE	OPTION	REMARKS
A-6	NORMANDY DRAWING TITLE BASEMENT FLOOR PLAN	NRM00_01	01	6/29/15	56A	
34	OPTION DESCRIPTION					

**NVR**  
NVR, Inc.  
Architectural Services  
Architects  
5285 Westover Lane, Suite 100  
Frederick, MD 21703

NVR, Inc., owner, expressly reserves its copyright in these plans. These plans are not to be reproduced, copied, stored in a retrieval system, or transmitted in any form or by any means, electronic, mechanical, photocopying, recording, or by any information storage and retrieval system, without the prior written consent of NVR, Inc.

C:\NVR\Solves\NORMANDY\_NRM00\_01\DCI-CH-W21\1338939\Sheet\Lot\_Specific\34\_A-6\_BSMT\_LS.dwg\_08/07/19 - 8:45 pm

**BASEMENT FLOOR PLAN**  
SCALE: 1/4" = 1'-0"



**FIRST FLOOR PLAN**  
SCALE: 1/4" = 1'-0"

**LEGEND**

- BEARING WALL
- NON BEARING WALL
- JACKS
- BEAM/HEADER
- PAD FOOTING
- STEEL COLUMN
- PORTAL FRAME
- JOIST/TRUSS
- LVL
- ENGINEERING PAGE NUMBER

SEE FC DETAILS FOR FRAMING CONNECTORS

- FLOOR PLAN NOTES** RYAN
- ALL HEADERS ARE (2) 2x6 W/ 2x4 WALLS OR (3) 2x6 W/ 2x6 WALLS, UNLESS OTHERWISE NOTED.
  - ALL HEADERS TO HAVE (1) 2x4 OR 2x6 JACK AND KING STUD EACH END, UNLESS OTHERWISE NOTED.
  - ALL EXTERIOR WALLS TO BE 4" W/ OSB OR 3 1/2" W/ T-PLY, ALL INTERIOR WALLS TO BE 3 1/2", UNLESS OTHERWISE NOTED.
  - HATCHED AREAS INDICATE DROPPED CEILINGS. ALL DROPPED CEILINGS ARE 12" UNLESS OTHERWISE NOTED.
  - SEE "BRACED WALL PANEL DETAIL SHEET" FOR SPECIAL WALL FRAMING LOCATIONS AND HEADER SIZES, IF APPLICABLE.
  - SEE STANDARD DETAIL CATEGORY "IT" SHEET(S) FOR INTERIOR TRIM DETAILS.
  - SEE ARCHITECTURAL DETAIL SHEET "AD" FOR HOUSE SPECIFIC INTERIOR TRIM OPTION TABLE.
  - ALL WINDOWS HAVE 7'-0 1/2" HEADER HEIGHT UNLESS OTHERWISE NOTED.
  - ALL HEADERS IN NON-BEARING WALLS SHALL BE A SINGLE FLAT 2x4 OR 2x6 ATTACHED TO CRIPPLES ABOVE, UNLESS OTHERWISE NOTED.

- GYPSUM NOTES** RYAN
- AT GARAGE:**  
GYPSUM BOARD AT COMMON WALLS, CEILINGS, BEAM WRAPS AND SUPPORTS PER STANDARD DETAIL FA-1(b) FIRE ASSEMBLIES OR AS REQUIRED BY LOCAL CODE.
- AT STAIRS:**  
1/2" GYPSUM BOARD AT UNDERSIDE OF STAIRS AND WALLS IN CLOSET

**LVL PLY TO PLY FASTENING SCHEDULE:** (WHERE APPLICABLE BASED ON LVL USAGE)

- 1A - (2) PLY UP TO AND INCLUDING 11 7/8" TALL; FASTEN PLYS W/ (2) ROWS 16D NAILS AT 12" O.C.
- 2A - (2) PLY 14" TO AND INCLUDING 18" TALL (INCLUSIVE); FASTEN PLYS W/ (3) ROWS 16D NAILS AT 12" O.C.
- 3A - (2) PLY 20" TALL AND OVER; FASTEN PLYS W/ (4) ROWS 16D NAILS AT 12" O.C.
- 4A - (3) PLY UP TO AND INCLUDING 11 7/8" TALL; FASTEN PLYS W/ (2) ROWS 16D NAILS AT 12" O.C. FROM EACH SIDE
- 5A - (3) PLY 14" TO AND INCLUDING 18" TALL (INCLUSIVE); FASTEN PLYS W/ (3) ROWS 16D NAILS AT 12" O.C. FROM EACH SIDE
- 6A - (3) PLY 20" TALL AND OVER; FASTEN PLYS W/ (4) ROWS 16D NAILS AT 12" O.C. FROM EACH SIDE
- 7A - (4) PLY (ALL SIZES); FASTEN PLYS W/ (2) ROWS 1/2" DIAMETER A307 BOLTS AT 24" O.C. SEE SHOP DRAWING FOR ADDITIONAL INFORMATION.

**FIELD INSTALLED FIRST FLOOR BEAM/HEADER SCHEDULE**

IDENTIFIER	DESCRIPTION	LENGTH	OPTIONS	ENG. NUM.	REMARKS
B06-2	LVL - 11-14	12'-8 1/2"	SRM, SGK, SQL, ELC	1017	1A
B07-2	LVL - 11-14	12'-4 1/16"	SRM, SGK, SQL, ELC	1017	1A
B1	BEAM STEEL - W12X35	24'-2"	SRI	1021	
B2	BEAM STEEL - W12X26	20'-2 1/2"	SRI	1022	
PF01-2	LVL - 11-04	20'-0"	6CB	1043	PORTAL FRAME, 1A

**FIRST FLOOR JACK SCHEDULE**

IDENTIFIER	DESCRIPTION	OPTIONS	ENG. NUM.	REMARKS
J01	JACK - (5) 2X4 SP#11		1021	
J02	JACK - (5) 2X6 SP#11		1021	
J03	JACK - (2) 2X4 SP# STUD GRADE		1019	
J04	JACK - (3) 2X4 SP# STUD GRADE		1017	
J05	JACK - (3) 2X4 SP# STUD GRADE		1017	
J06	JACK - (3) 2X4 SP# STUD GRADE		1057	
J07	JACK - (3) 2X4 SP# STUD GRADE		1057	
J10	JACK - (5) 2X4 SP#11	SRI	1023	
J11	JACK - (6) 2X4 SP#11	6C6SXG	1023	
J14	JACK - (2) 2X4 SP# STUD GRADE	6CB, 6CF	1043	
J15	JACK - (2) 2X4 SP# STUD GRADE	6CB, 6CF	1043	
J19	JACK - (2) 2X4 SP# STUD GRADE		1043	
J21	JACK - (7) 2X4 SP#11	ELC	2000	
J30	JACK - (7) 2X4 SP#11	ELC	2000	
J31	JACK - (3) 2X4 SP# STUD GRADE	SRM, SGK, SQL, ELC	1017	
J32	JACK - (3) 2X4 SP# STUD GRADE	SRM, SGK, SQL, ELC	1017	
J33	JACK - (2) 2X4 SP# STUD GRADE		1007	
J34	JACK - (2) 2X4 SP# STUD GRADE		1007	

**REVISIONS**

REV. NO.	DATE	DESCRIPTION
1	08/07/16	N - DRAWING ALIGNMENT
2	11/05/16	TM - STANDARD DETAILS 3.0
3	07/17/17	SL5 - T-PLY CONVERSION PROJECT

**REMARKS**

NVR, Inc., owner, expressly reserves its copyright in these plans. These plans are not to be reproduced, changed, copied, or otherwise used in any way without the prior written consent of NVR, Inc.

**NVR**  
Architectural Services  
Suite 100  
5285 Washington Blvd  
Frederick, MD 21703

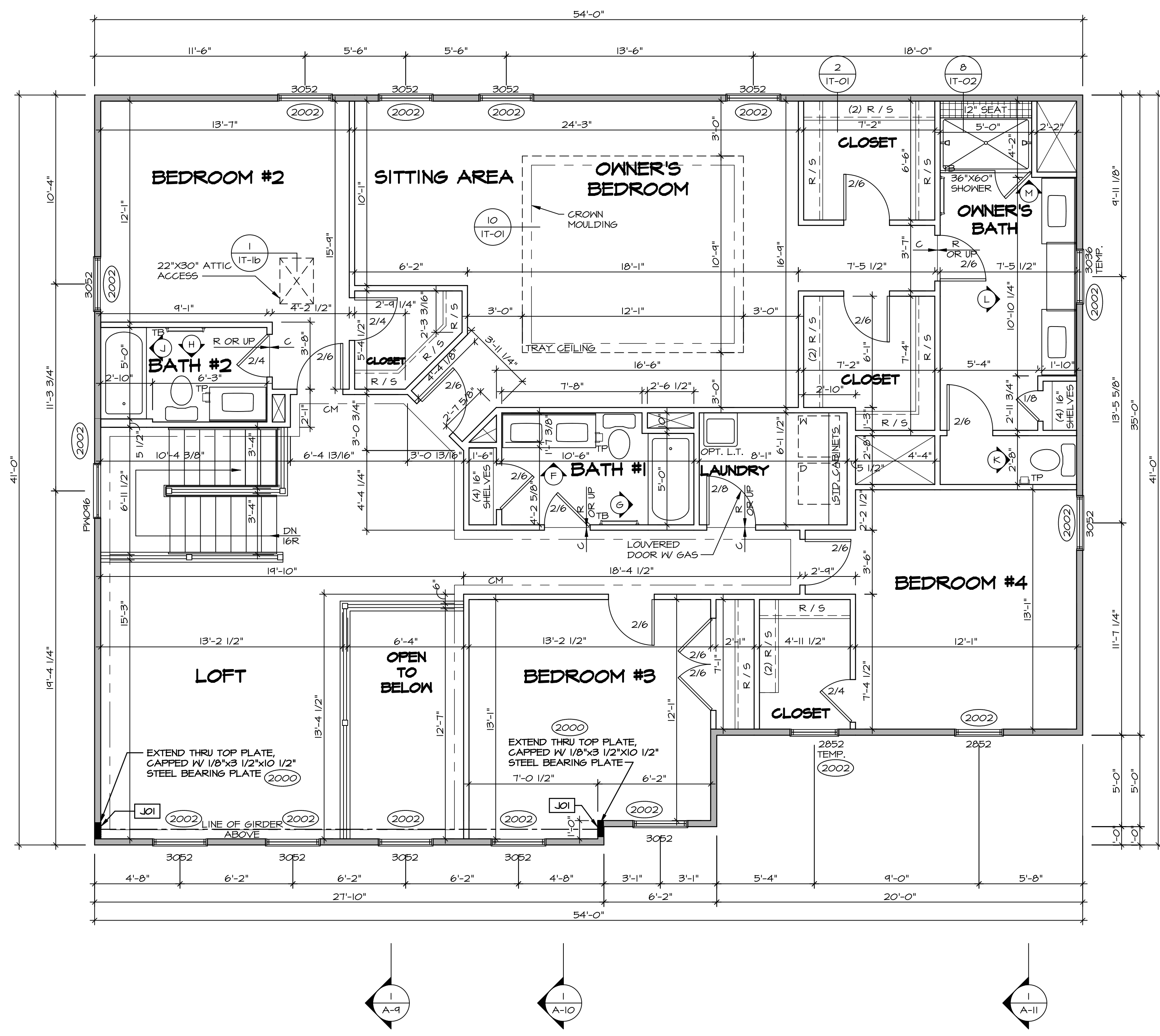
SET NO. NRM00  
VERSION 01  
DRAWN BY SGA  
DATE: 6/29/15  
OPTION

**NORMANDY**  
DRAWING TITLE  
FIRST FLOOR PLAN  
OPTION DESCRIPTION

SHEET NO. **A-7**

35

C:\NVR\Solves\NORMANDY\_ARCH00\_01\DCI-CH-W21\13389393\Sheet\Lot\_Specific\35\_A-7\_Plan1\_Ls.dwg 08/07/19 - 8:45 pm



**LEGEND**

- BEARING WALL
- NON BEARING WALL
- INDICATES BEARING FROM POINT-LOAD ABOVE
- JACKS
- BEAM/HEADER
- PAD FOOTING
- STEEL COLUMN
- PORTAL FRAME
- JOIST/TRUSS
- LVL
- ENGINEERING PAGE NUMBER

SEE FC DETAILS FOR FRAMING CONNECTORS

- FLOOR PLAN NOTES** RYAN
- ALL HEADERS ARE (2) 2x6 w/ 2x4 WALLS OR (3) 2x6 w/ 2x6 WALLS, UNLESS OTHERWISE NOTED.
  - ALL HEADERS TO HAVE (1) 2x4 OR 2x6 JACK AND KING STUD EACH END, UNLESS OTHERWISE NOTED.
  - ALL EXTERIOR WALLS TO BE 4" w/ OSB OR 3 1/2" w/ T-PLY, ALL INTERIOR WALLS TO BE 3 1/2", UNLESS OTHERWISE NOTED.
  - HATCHED AREAS INDICATE DROPPED CEILINGS. ALL DROPPED CEILINGS ARE 12" UNLESS OTHERWISE NOTED.
  - SEE "BRACED WALL PANEL DETAIL SHEET" FOR SPECIAL WALL FRAMING LOCATIONS AND HEADER SIZES, IF APPLICABLE.
  - SEE STANDARD DETAIL CATEGORY "11" SHEET(S) FOR INTERIOR TRIM DETAILS.
  - SEE ARCHITECTURAL DETAIL SHEET "AD" FOR HOUSE SPECIFIC INTERIOR TRIM OPTION TABLE.
  - ALL WINDOWS HAVE 7'-0 1/2" HEADER HEIGHT UNLESS OTHERWISE NOTED.
  - ALL HEADERS IN NON-BEARING WALLS SHALL BE A SINGLE FLAT 2x4 OR 2x6 ATTACHED TO CRIPPLES ABOVE, UNLESS OTHERWISE NOTED.

**SECOND FLOOR JACK SCHEDULE**

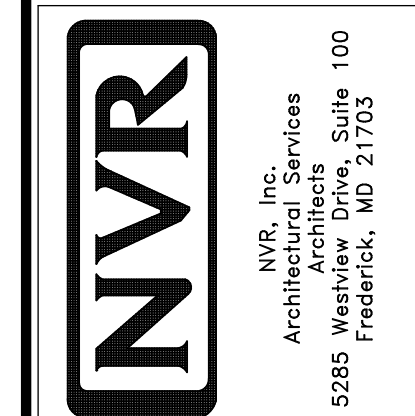
IDENTIFIER	DESCRIPTION	OPTIONS	ENG. N.M.	REMARKS
JO1	JACK - (7) 2X4 SP#1	ELC	2000	
JO2	JACK - (7) 2X4 SP#1	ELC	2000	

**SECOND FLOOR PLAN**  
SCALE: 1/4" = 1'-0"

**REMARKS**

REV. NO.	DATE	DESCRIPTION
1	08/07/16	N.L. - DRAWING ALIGNMENT
2	11/05/16	TH - STANDARD DETAILS 3.0
3	07/17/17	SL5 - T-PLY CONVERSION PROJECT

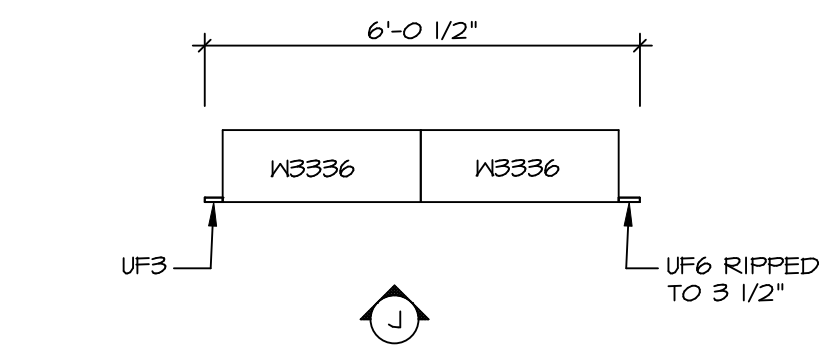
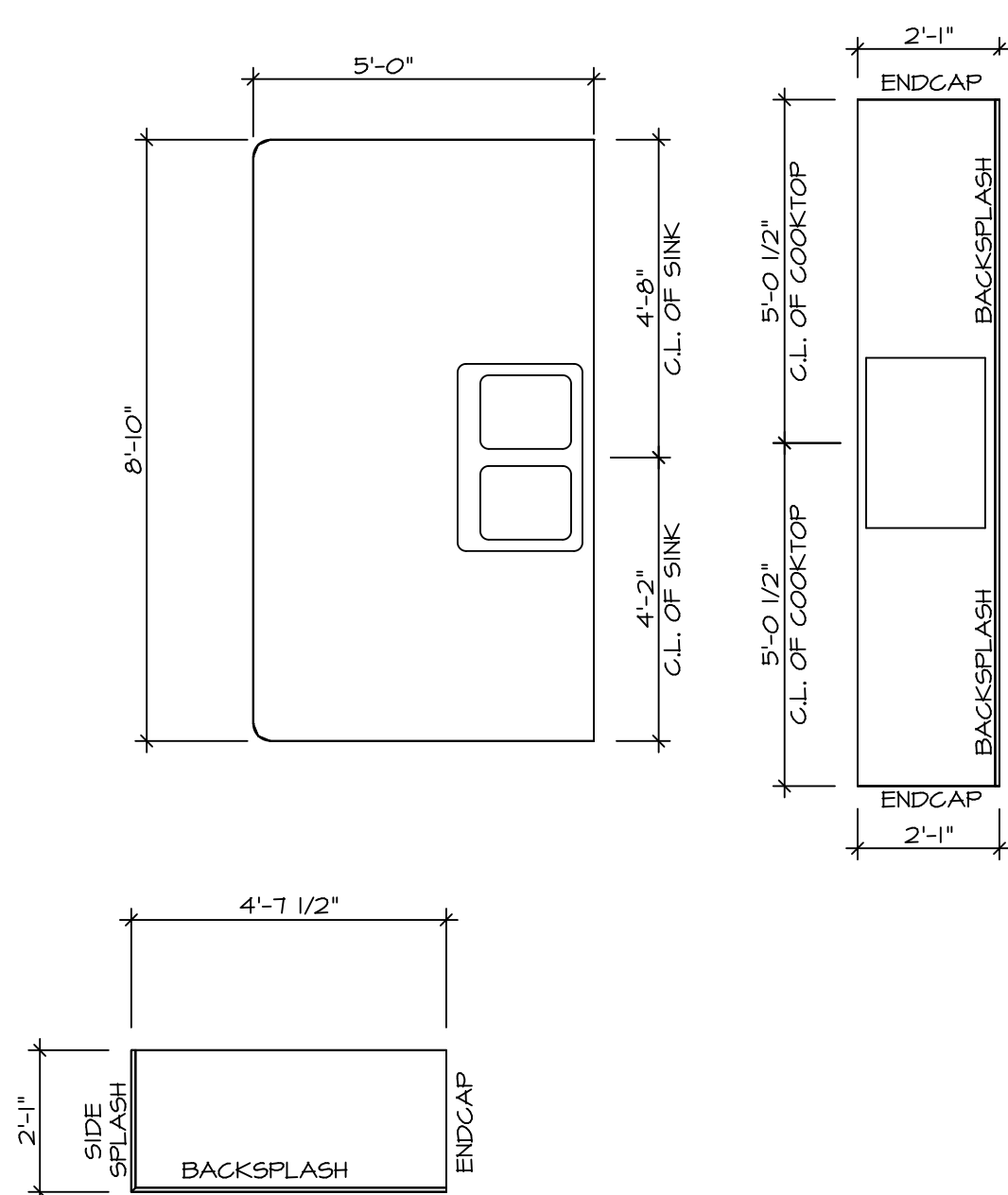
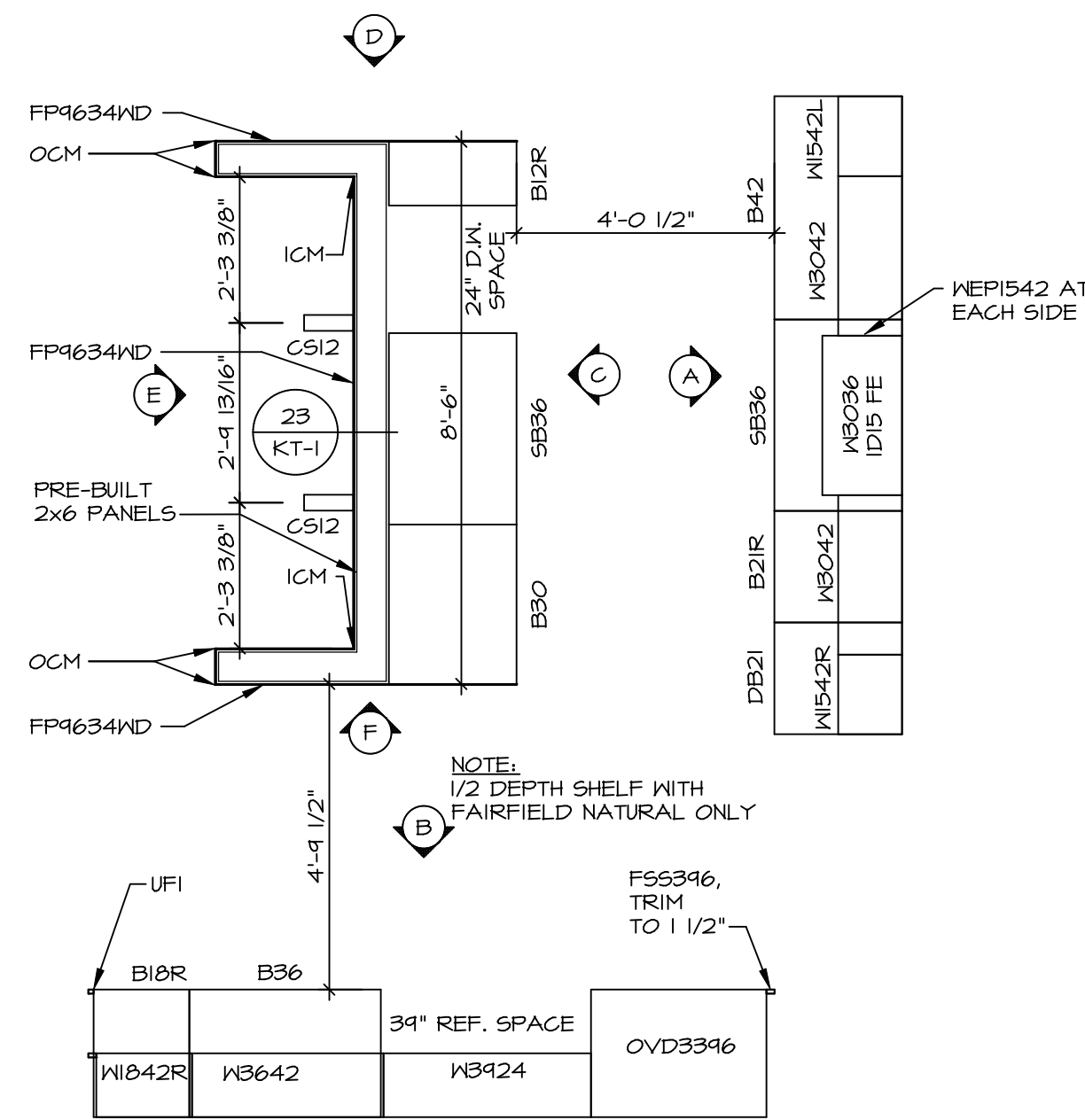
NVR, Inc., owner, expressly reserves its copyright in these plans. These plans are not to be reproduced, changed, copied, or otherwise used in any way without the prior written consent of NVR, Inc.



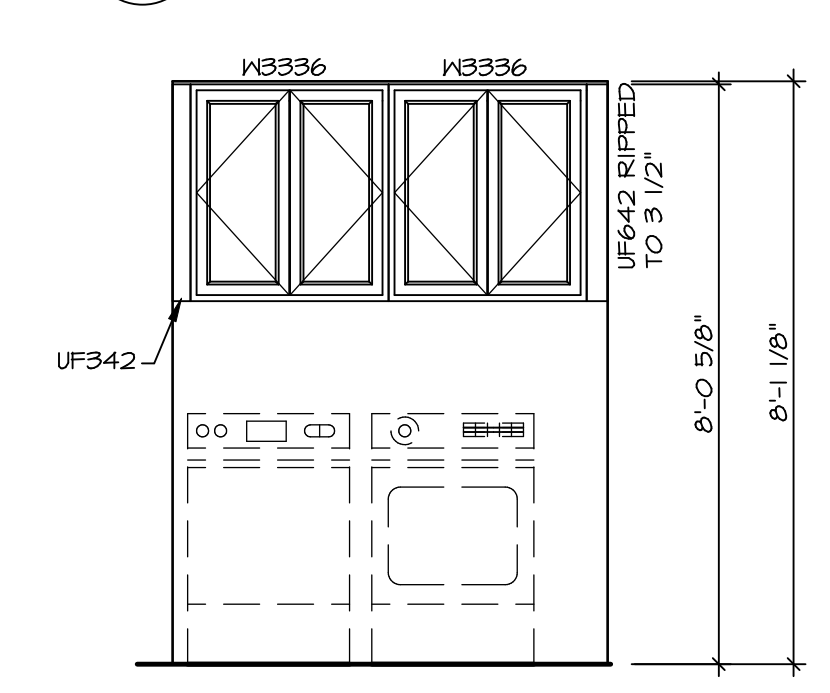
SET NO. NRM00  
VERSION 01  
DRAWN BY SGA  
DATE: 6/29/15  
OPTION

**MODEL**  
NORMANDY  
DRAWING TITLE  
SECOND FLOOR PLAN  
OPTION DESCRIPTION

**SHEET NO.**  
A-8  
38



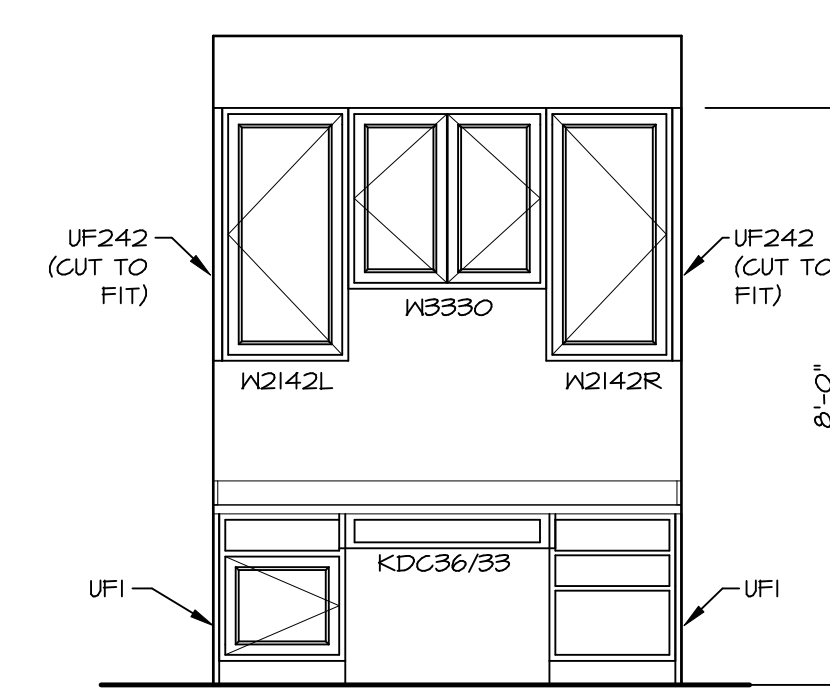
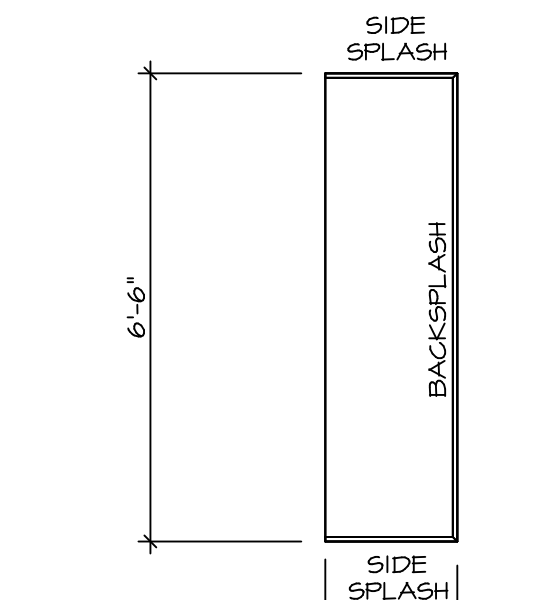
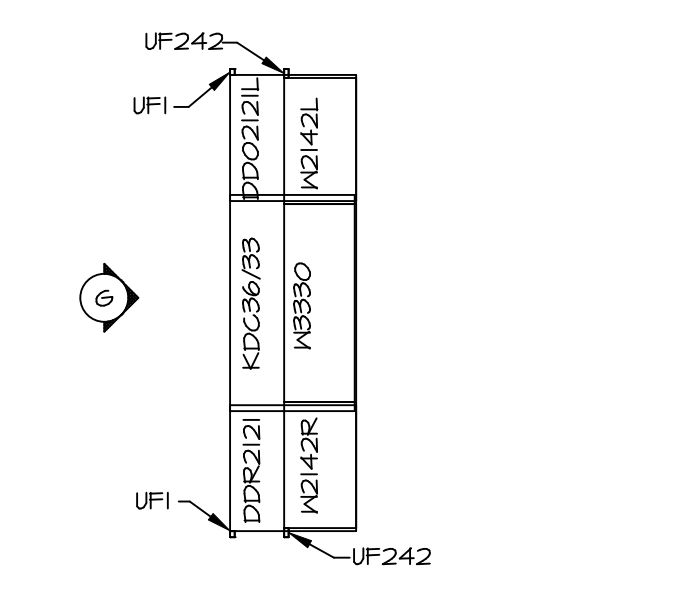
LAUNDRY CABINET PLAN KC-3281



LAUNDRY CABINET ELEVATION

1  
A-13  
SCALE: 3/8" = 1'-0"

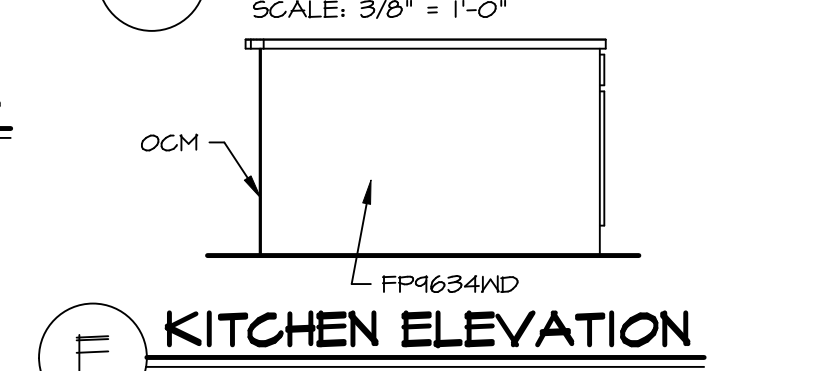
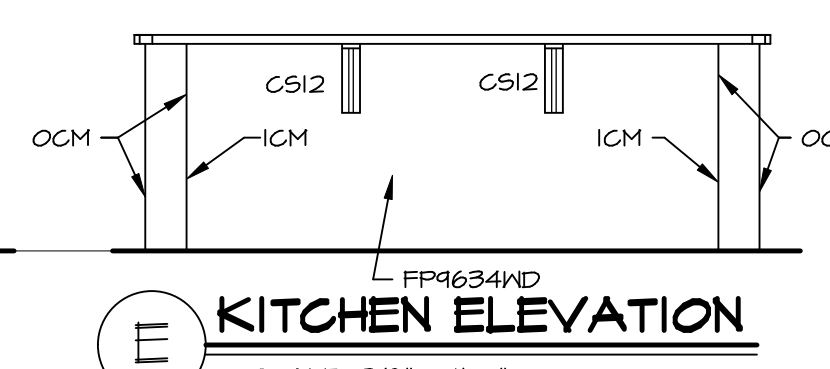
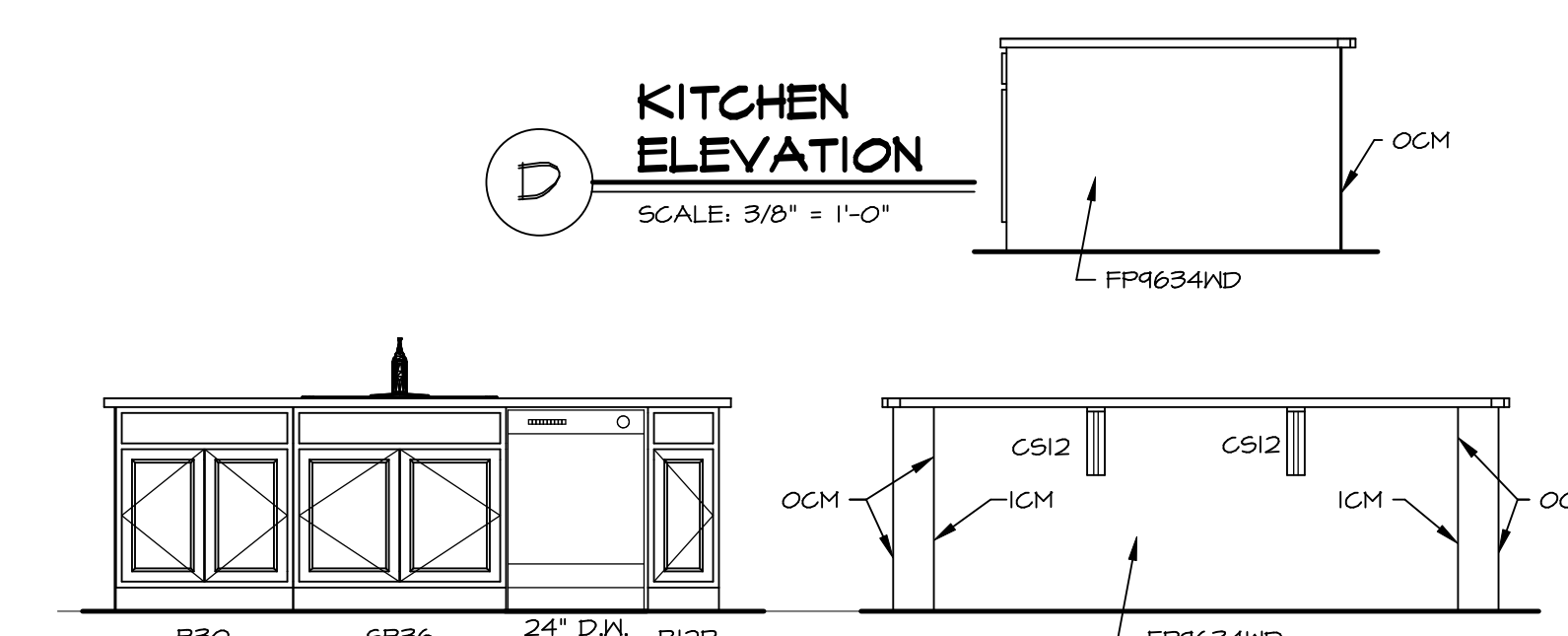
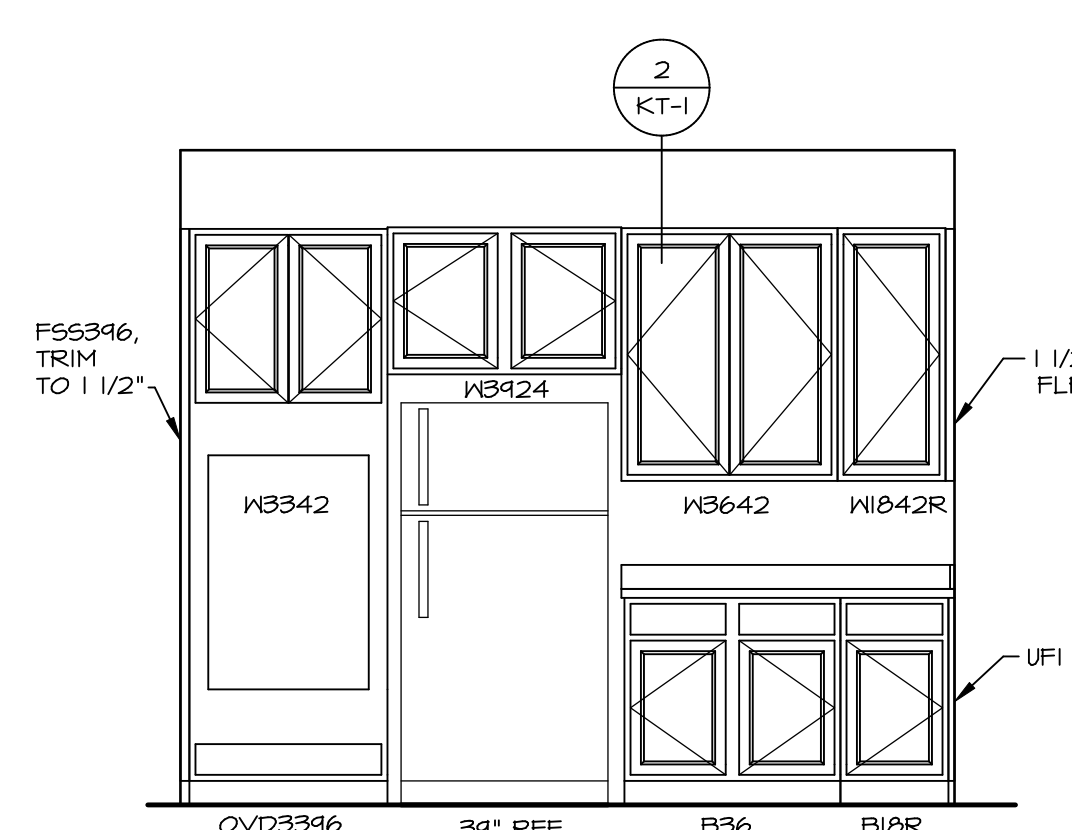
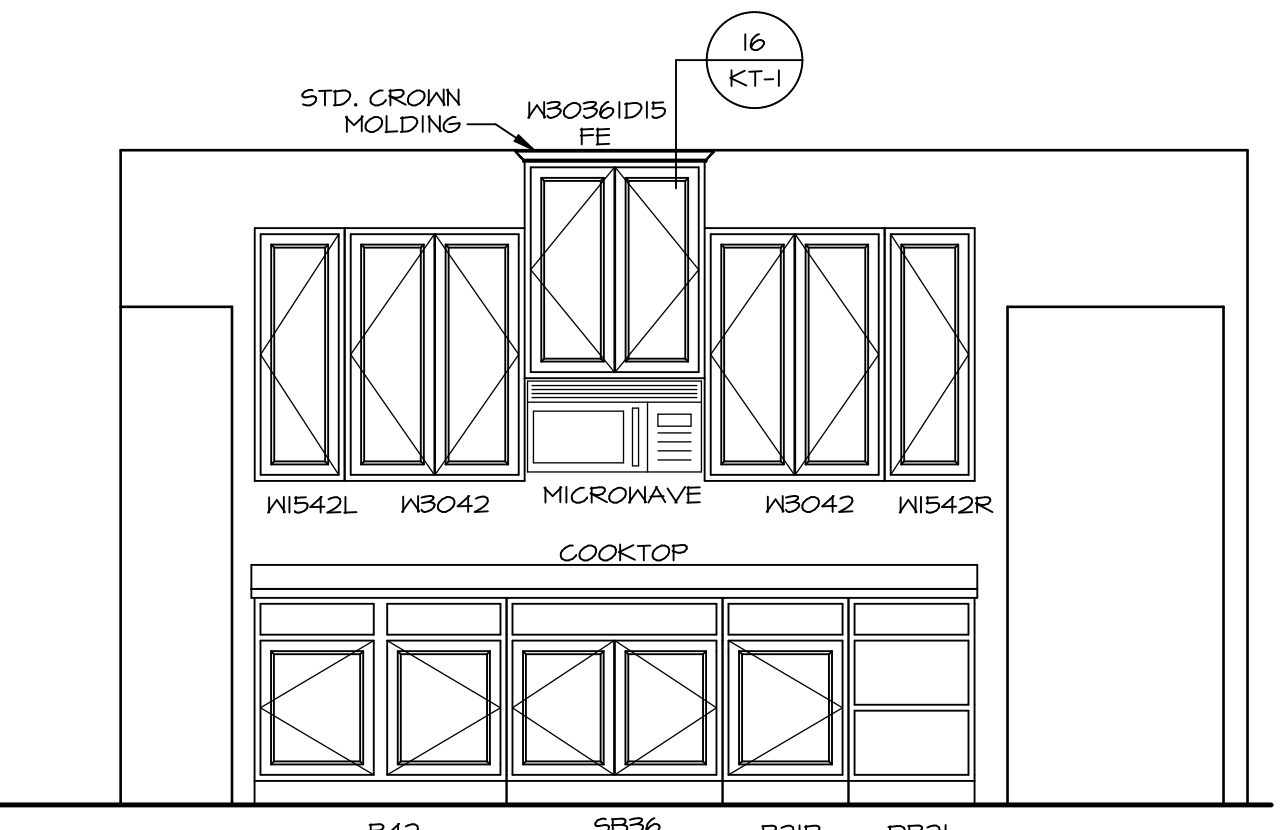
2  
A-13  
SCALE: 3/8" = 1'-0"



3  
A-13  
SCALE: 3/8" = 1'-0"

4  
A-13  
SCALE: 3/8" = 1'-0"

5  
A-13  
SCALE: 3/8" = 1'-0"



A  
SCALE: 3/8" = 1'-0"

B  
SCALE: 3/8" = 1'-0"

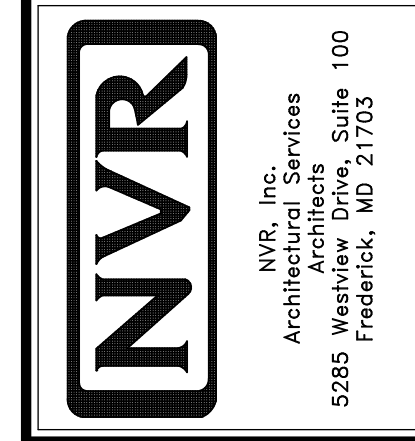
C  
SCALE: 3/8" = 1'-0"

E  
SCALE: 3/8" = 1'-0"

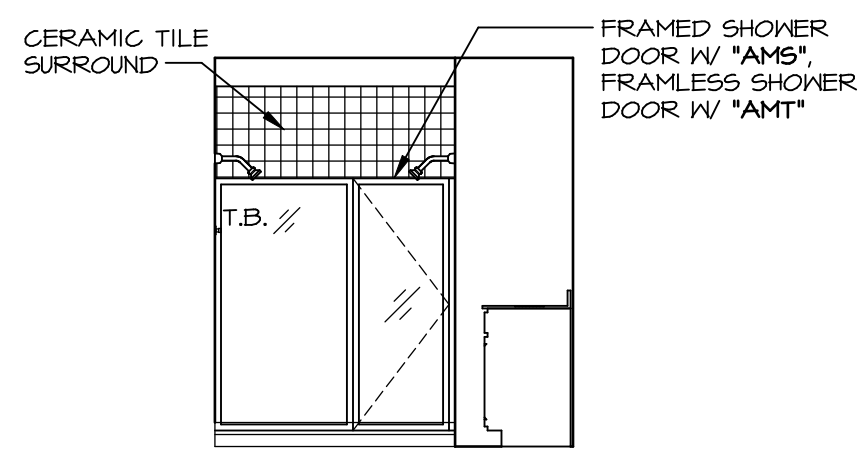
F  
SCALE: 3/8" = 1'-0"

REV. NO.	DATE	REMARKS
1	11/05/16	TRV - STANDARD DETAILS 3.0

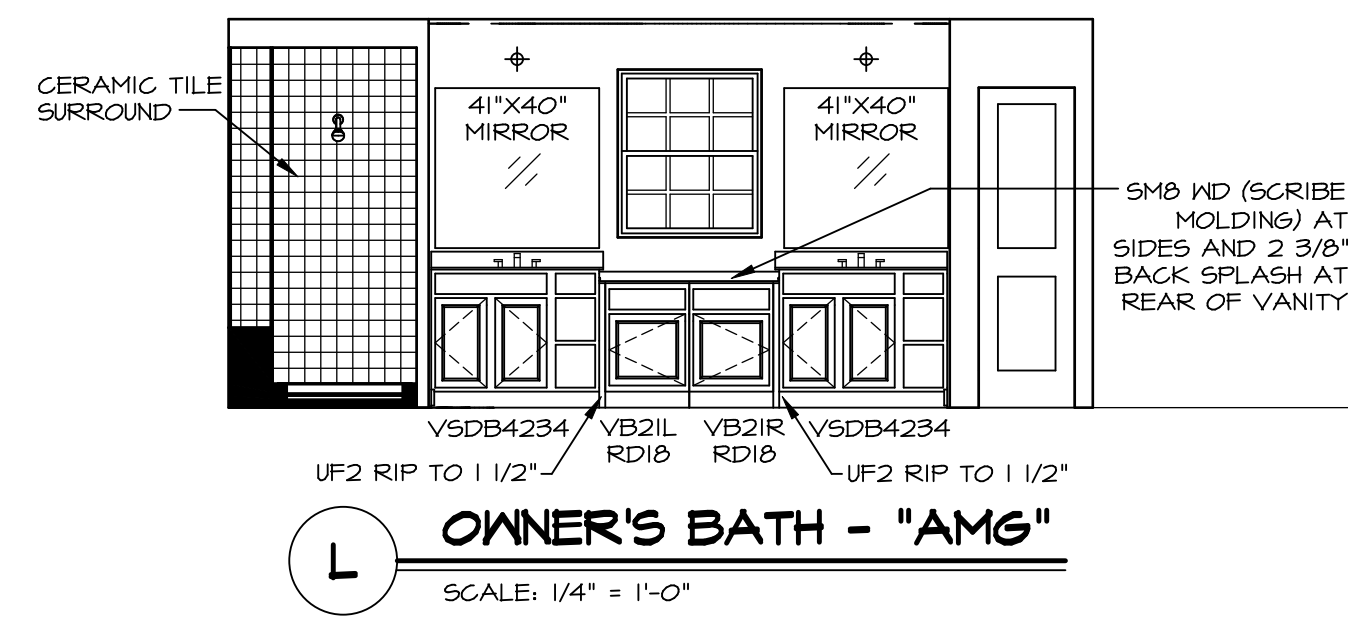
NVR, Inc., owner, expressly reserves its copyright in these plans. These plans are not to be reproduced, changed, copied, or otherwise used in any way without the written consent of NVR, Inc.



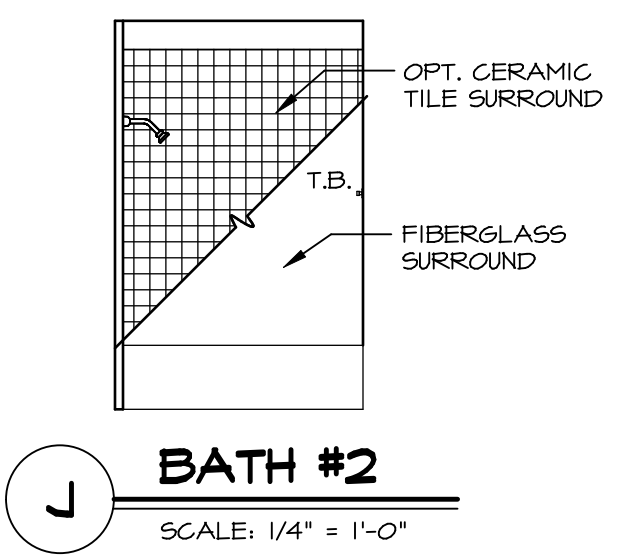
MODEL	NORMANDY
DRAWING TITLE	KITCHEN LAYOUT
OPTION DESCRIPTION	
SHEET NO.	A-13
46	



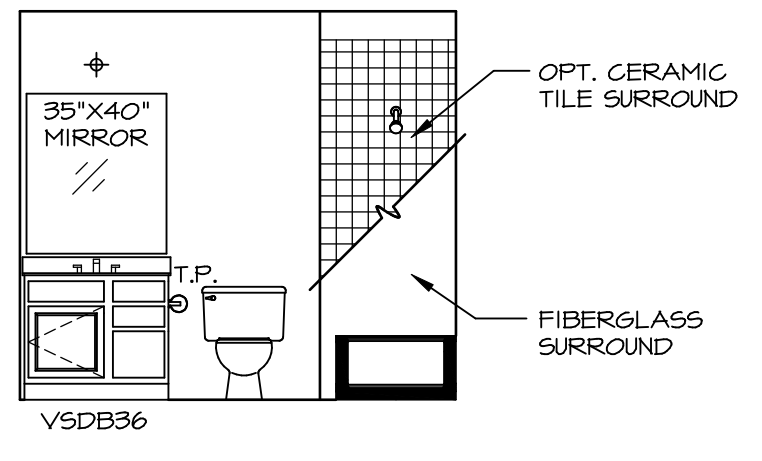
**M** OWNER'S BATH - "AMG"  
SCALE: 1/4" = 1'-0"



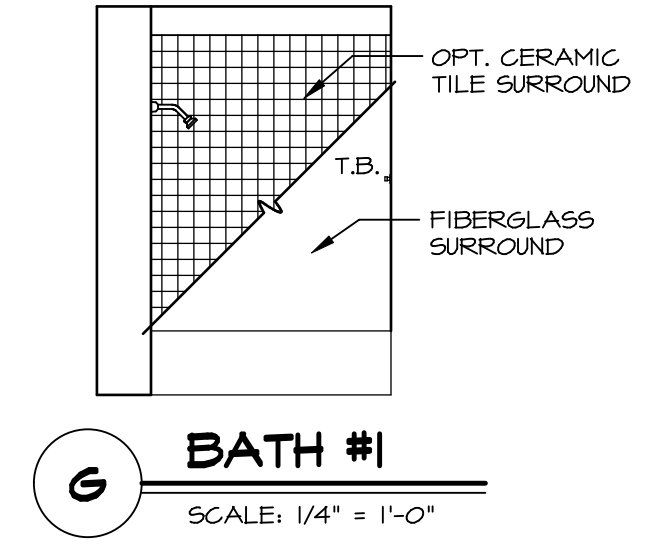
**E** FIRST FLOOR BATH - "BAR"  
SCALE: 1/4" = 1'-0"



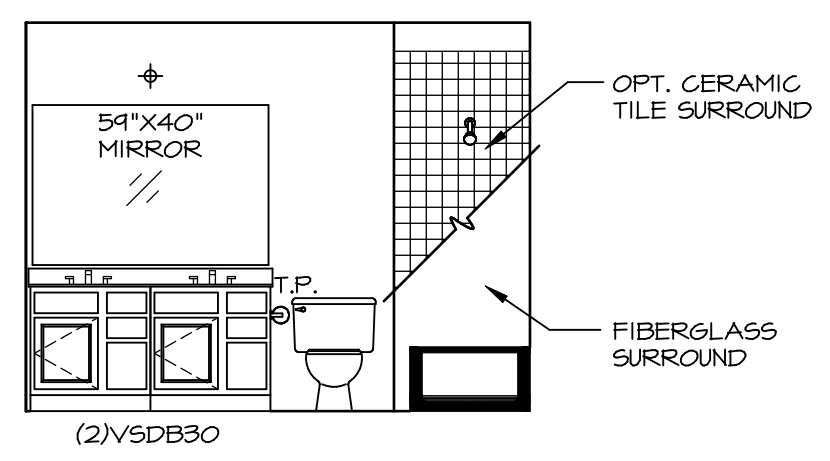
**J** BATH #2  
SCALE: 1/4" = 1'-0"



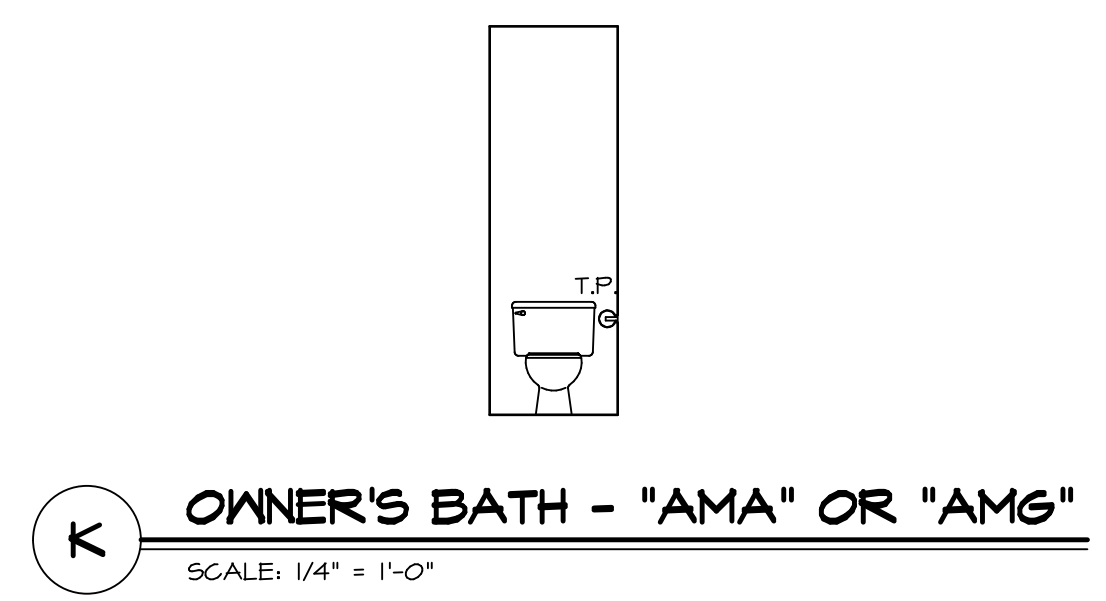
**H** BATH #2  
SCALE: 1/4" = 1'-0"



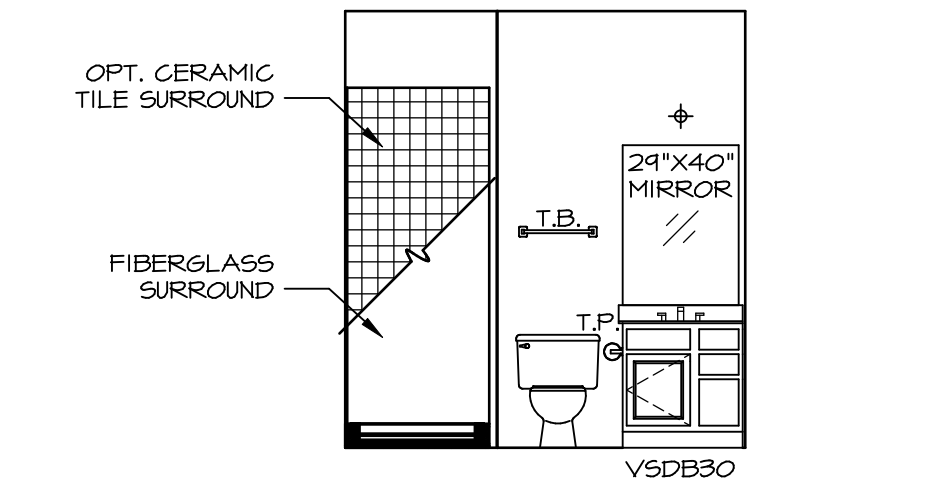
**G** BATH #1  
SCALE: 1/4" = 1'-0"



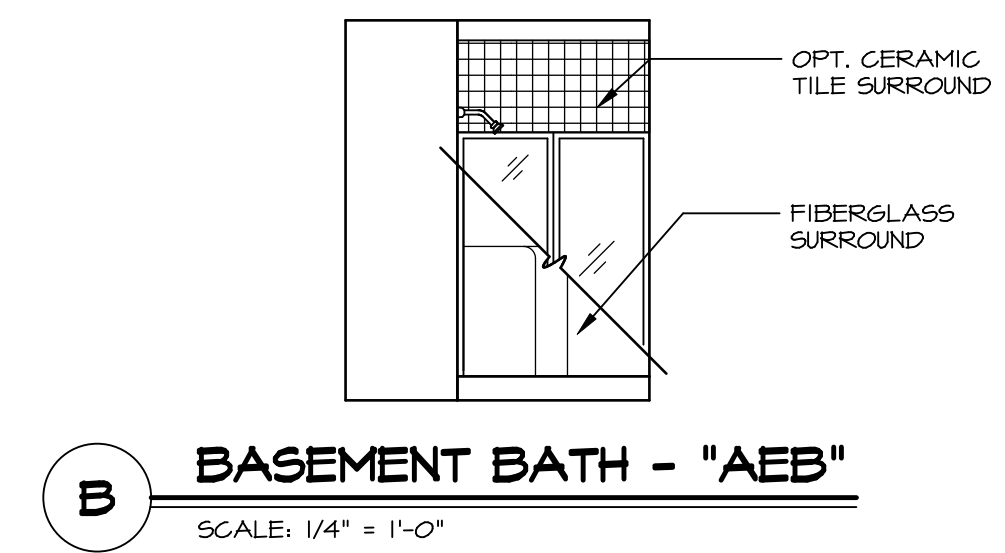
**F** BATH #1  
SCALE: 1/4" = 1'-0"



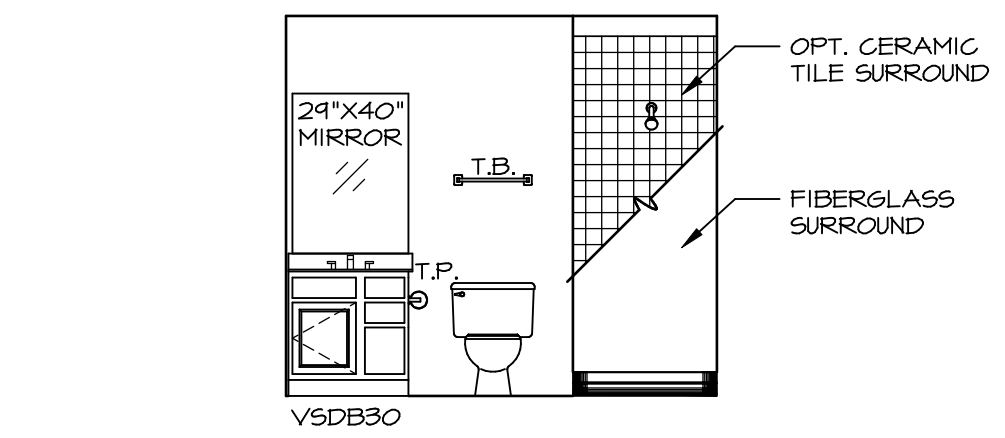
**K** OWNER'S BATH - "AMA" OR "AMG"  
SCALE: 1/4" = 1'-0"



**D** FIRST FLOOR BATH - "BAR"  
SCALE: 1/4" = 1'-0"



**B** BASEMENT BATH - "AEB"  
SCALE: 1/4" = 1'-0"



**A** BASEMENT BATH - "AEB"  
SCALE: 1/4" = 1'-0"

**NOTES:**

1. TEMPERED GLASS SHOWER ENCLOSURE WITH SWING DOOR OR OPTIONAL SLIDING DOOR BY DIVISION
2. TUB ACCESS PANELS PROVIDED AS NEEDED, ALL MATERIALS BY DIVISION
3. REFER TO SHEET (IT-2) FOR TUB AND SHOWER DETAILS.
4. ALL V5DB24-42 DRAWERS TO BE SET ON RIGHT HAND.
5. BATH ELEVATIONS ARE SHOWN PER PLAN.

REV. NO.	DATE	REMARKS
1	08/07/16	N.L. - DRAWING ALIGNMENT
2	11/05/16	TRV. - STANDARD DETAILS 5.0

NVR, Inc., owner, expressly reserves its copyright in these plans. These plans are not to be reproduced, changed, copied, or otherwise used in any way without the prior written consent of NVR, Inc.

**NVR**  
NVR, Inc.  
Architectural Services  
100  
5285 Westchase Lane, Suite 100  
Frederick, MD 21703

MODEL	NORMANDY
DRAWING TITLE	BATH ELEVATIONS
OPTION DESCRIPTION	
SHEET NO.	A-14
48	