

LEGEND

- BEARING WALL
- NON BEARING WALL
- INDICATES BEARING FROM POINT-LOAD ABOVE
- JACK
- BEAMHEADER
- PAD FOOTING
- STEEL COLUMN
- PORTAL FRAME
- JOIST/TRUSS
- LVL.

- FLOOR PLAN NOTES**
- ALL HEADERS ARE (2) 2x6 w/ 2x4 WALLS OR (3) 2x6 w/ 2x6 WALLS, UNLESS OTHERWISE NOTED.
 - ALL HEADERS TO HAVE (1) 2x4 OR 2x6 JACK EACH END, UNLESS OTHERWISE NOTED.
 - ALL EXTERIOR WALLS TO BE 4" AND ALL INTERIOR WALLS TO BE 3 1/2", UNLESS OTHERWISE NOTED.
 - HATCHED AREAS INDICATE DROPPED CEILINGS. ALL DROPPED CEILINGS ARE 12" UNLESS OTHERWISE NOTED.
 - SEE "BRACED WALL PANEL DETAIL SHEET" FOR SPECIAL WALL FRAMING LOCATIONS AND HEADER SIZES, IF APPLICABLE.
 - WINDOWS HAVE T-O 1/2" HEADER HEIGHT UNLESS OTHERWISE NOTED.

GYPSUM NOTES

AT GARAGE:
GYPSUM BOARD AT COMMON WALLS, CEILINGS, BEAM WRAPS AND SUPPORTS AS REQUIRED BY LOCAL CODE.

AT STAIRS:
1/2" GYPSUM BOARD AT UNDERSIDE OF STAIRS AND WALLS IN CLOSET

BASEMENT JACK SCHEDULE

IDENTIFIER	DESCRIPTION	OPTIONS	ENS. NUM.	REMARKS
J01	JACK - 2x4 SFF STUD GRADE		B18	
J02	JACK - 2x4 SFF STUD GRADE		B22	

NVR, Inc., owner, expressly warrants that the information contained herein is true and correct to the best of its knowledge and belief. These plans are not to be used for any other purpose without the written consent of NVR, Inc.

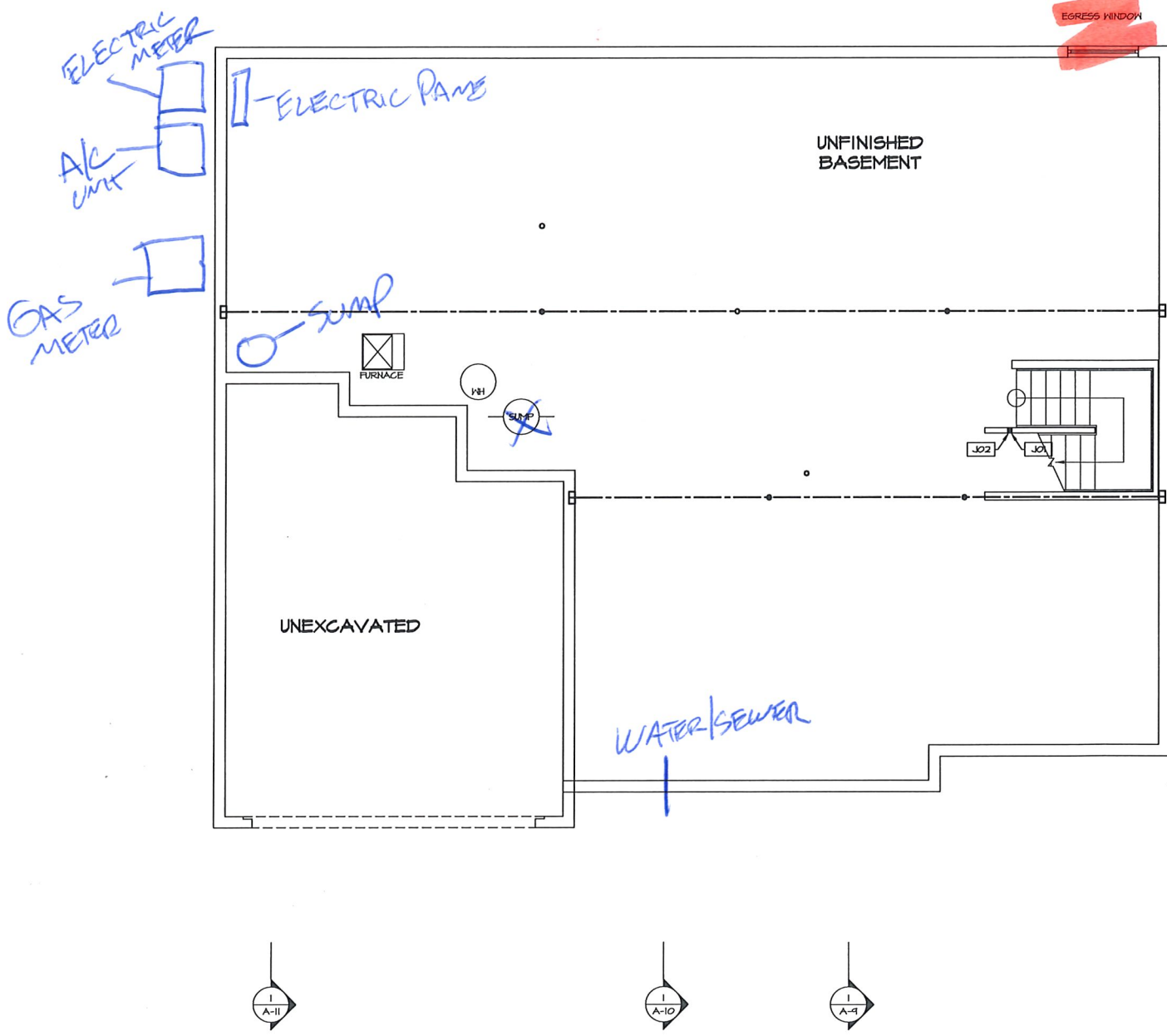


SET NO. NRM00
VERSION 01
DRAWN BY SSA
DATE: 6/24/15
OPTION

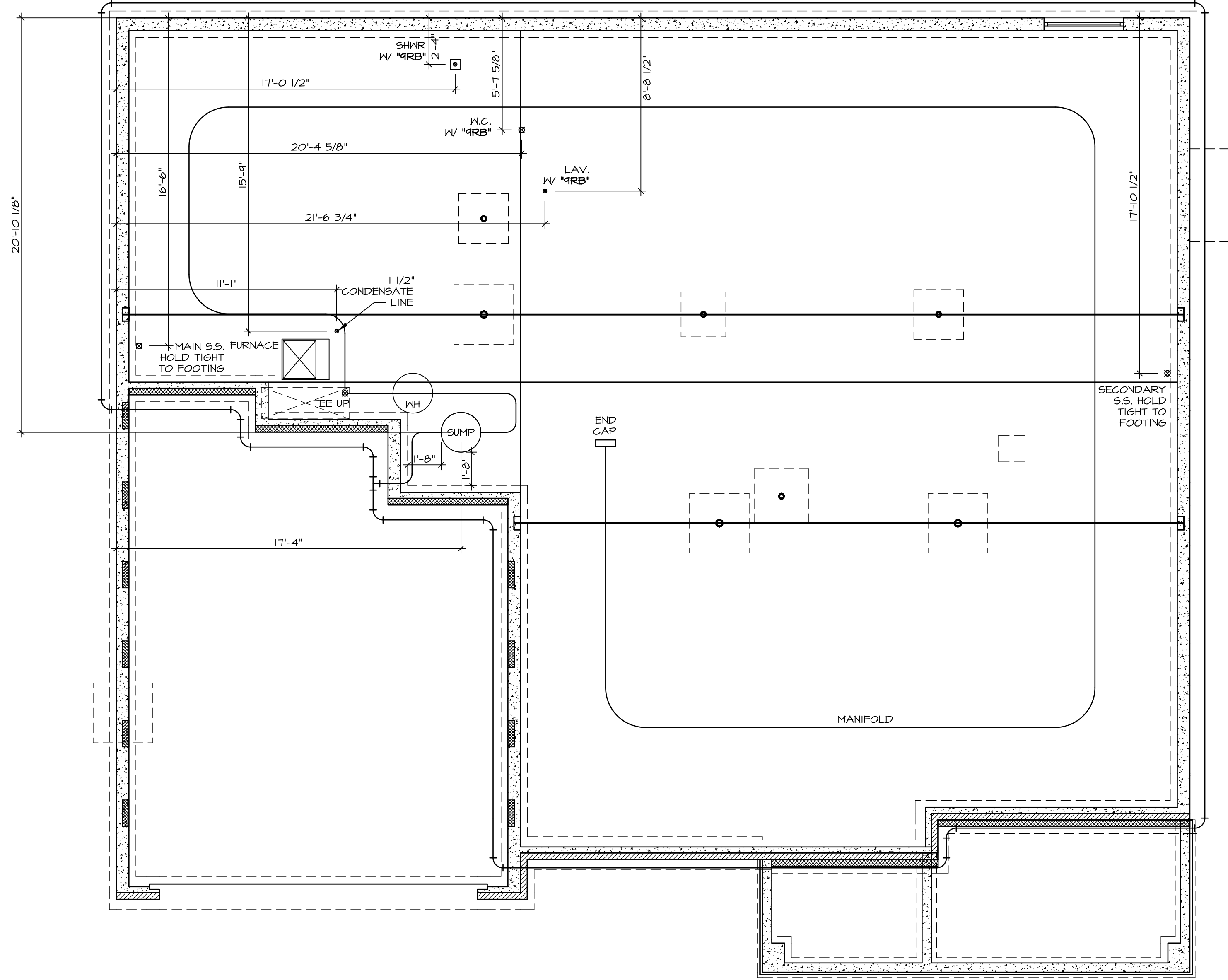
MODEL: NORMANDY
DRAWING TITLE: BASEMENT FLOOR PLAN
OPTION DESCRIPTION:

SHEET NO. A-6
34

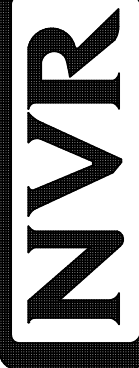
P:\NVR_Ar_Soldra\Bvsn_Contractors\Drawings\0001\2018_Second_Hall\NORMANDY_NRM00_01\ELL_R_CH_M21A_34_A-6_BSMI_LS.dwg 12/12/18 - 8:05 AM

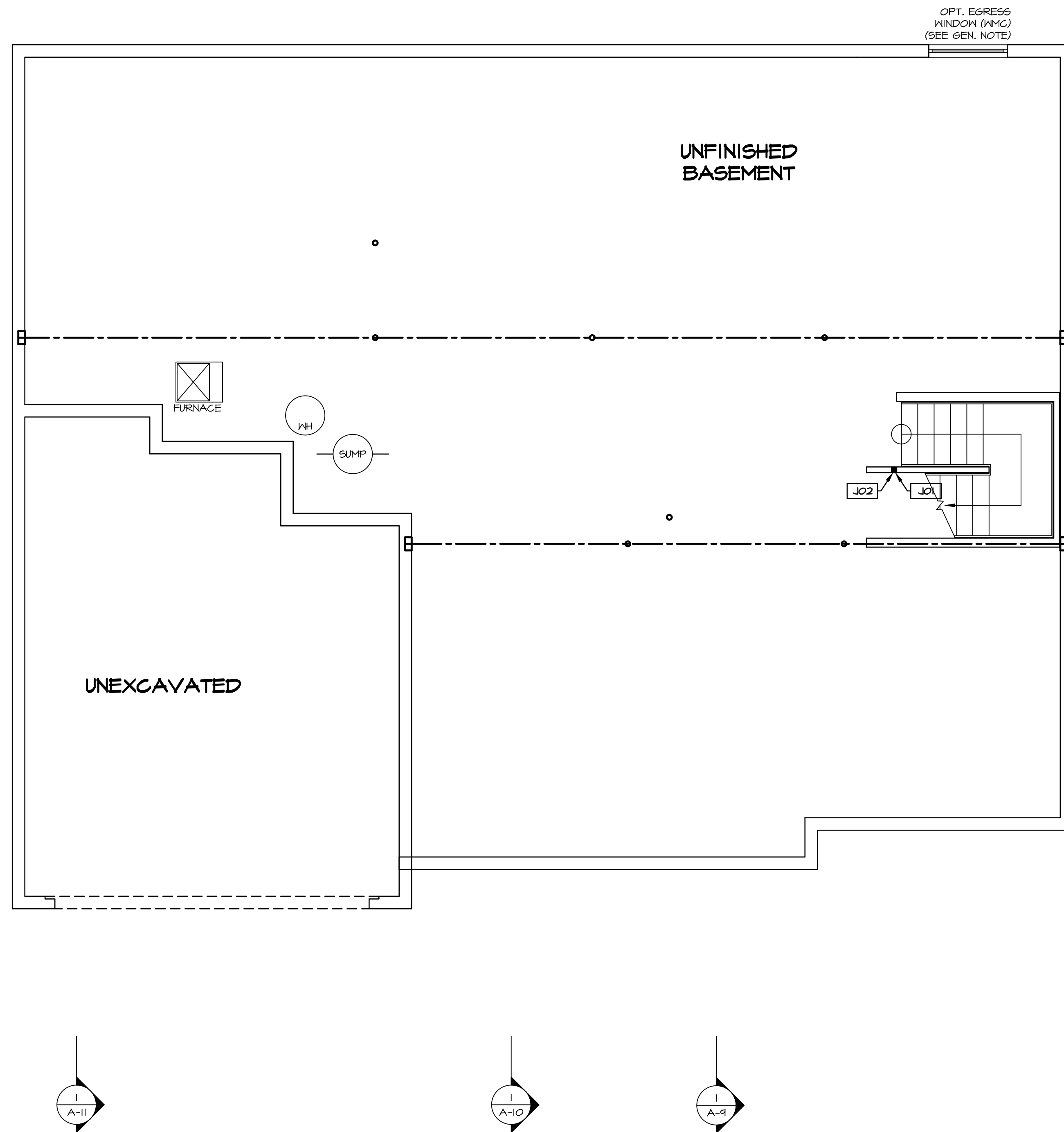


BASEMENT FLOOR PLAN
SCALE: 1/4" = 1'-0"



PLUMBING PLAN
 SCALE: 1/4" = 1'-0"

SHEET NO. A-5	MODEL NORMANDY DRAWING TITLE PLUMBING PLAN OPTION DESCRIPTION 31	SET NO. NRM00 VERSION 01 DRAWN BY RJC DATE: 5/14/15 OPTION	 <p>NVR, Inc. Architectural Services Architects 5285 Westheimer Road, Suite 100 Frederick, MD 21703</p>	<p>NVR, Inc., owner, expressly reserves its copyright in these plans. These plans are not to be reproduced, changed, copied, or otherwise used in any way without the written consent of NVR, Inc.</p>	REV. NO. DATE	REMARKS
-------------------------	--	--	--	--	-----------------	---------



LEGEND	
	BEARING WALL
	NON BEARING WALL
	INDICATES BEARING FROM POINT-LOAD ABOVE
	JACKS
	BEAM/HEADER
	PAD FOOTING
	STEEL COLUMN
	PORTAL FRAME
	JOIST/TRUSS
	LVL
	ENGINEERING PAGE NUMBER

SEE FC DETAILS FOR FRAMING CONNECTORS

- FLOOR PLAN NOTES**
- ALL HEADERS ARE (2) 2x6 w/ 2x4 WALLS OR (3) 2x6 w/ 2x6 WALLS, UNLESS OTHERWISE NOTED.
 - ALL HEADERS TO HAVE (1) 2x4 OR 2x6 JACK EACH END, UNLESS OTHERWISE NOTED.
 - ALL EXTERIOR WALLS TO BE 4" AND ALL INTERIOR WALLS TO BE 3 1/2", UNLESS OTHERWISE NOTED.
 - HATCHED AREAS INDICATE DROPPED CEILINGS. ALL DROPPED CEILINGS ARE 12" UNLESS OTHERWISE NOTED.
 - SEE "BRACED WALL PANEL DETAIL SHEET" FOR SPECIAL WALL FRAMING LOCATIONS AND HEADER SIZES, IF APPLICABLE.
 - SEE STANDARD DETAIL CATEGORY "IT" SHEET(S) FOR INTERIOR TRIM DETAILS.
 - SEE ARCHITECTURAL DETAIL SHEET "AD" FOR HOUSE SPECIFIC INTERIOR TRIM OPTION TABLE.
 - ALL WINDOWS HAVE 7'-0" 1/2" HEADER HEIGHT UNLESS OTHERWISE NOTED.

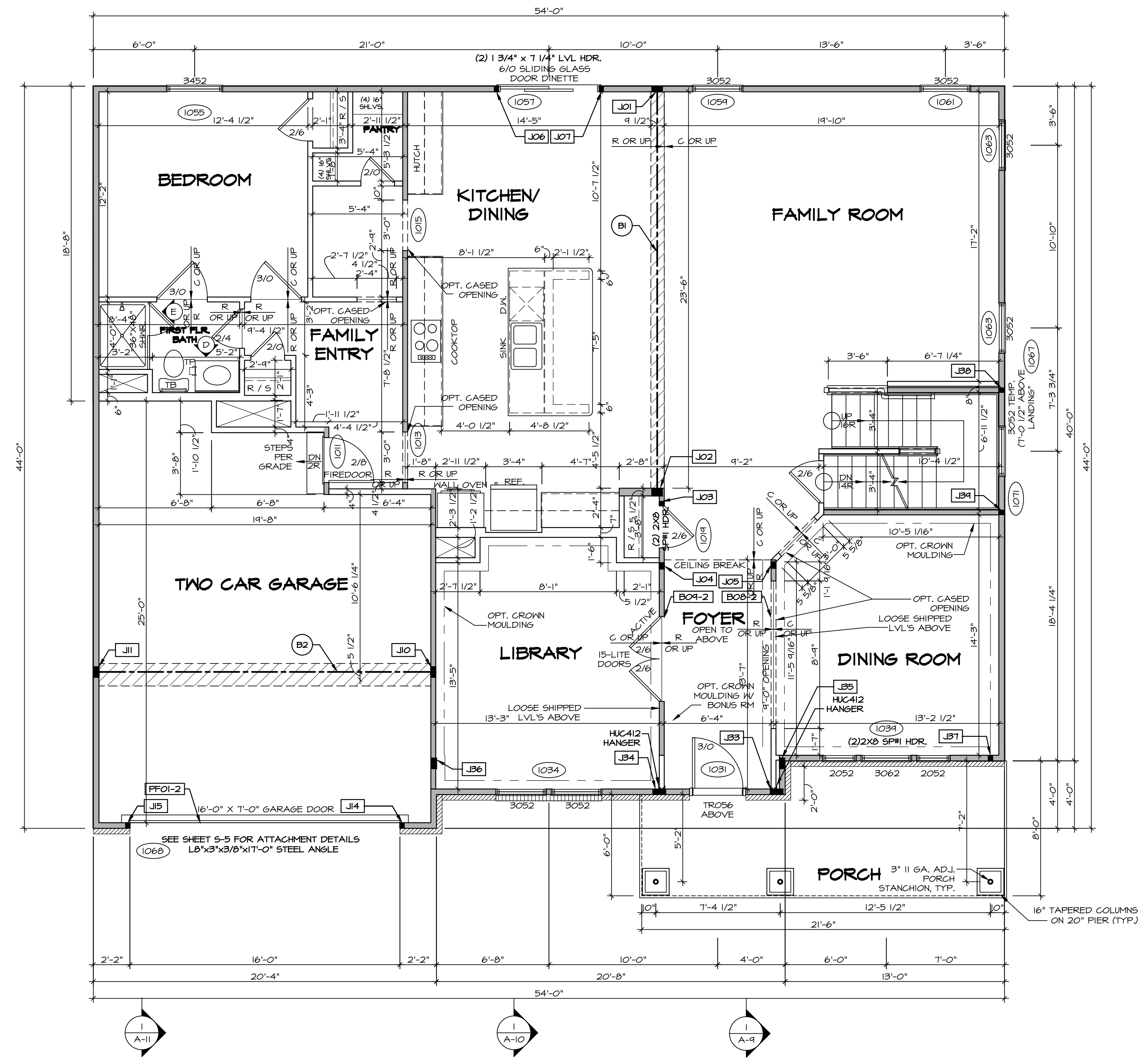
- GYPSUM NOTES**
- AT GARAGE:
GYPSUM BOARD AT COMMON WALLS, CEILING, BEAM WRAPS AND SUPPORTS PER STANDARD DETAIL FA-1(b) FIRE ASSEMBLIES OR AS REQUIRED BY LOCAL CODE.
- AT STAIRS:
1/2" GYPSUM BOARD AT UNDERSIDE OF STAIRS AND WALLS IN CLOSET

BASEMENT JACK SCHEDULE

IDENTIFIER	DESCRIPTION	OPTIONS	ENG. NUM.	REMARKS
J01	JACK - 2x4 SPF STUD GRADE		B10	
J02	JACK - 2x4 SPF STUD GRADE		B22	

SHEET NO. A-6	MODEL NORMANDY	DRAWING TITLE BASEMENT FLOOR PLAN	OPTION DESCRIPTION 34	SET NO. NRM00 VERSION 01 DRAWN BY SGA DATE: 6/29/15 OPTION	REMARKS
 NVR, Inc. Architectural Services Architects 5285 Westover Lane, Suite 100 Frederick, MD 21703					NVR, Inc., owner, expressly reserves its copyright in the drawings and plans. These plans are not to be reproduced, changed, copied, or otherwise used in any way without the written consent of NVR, Inc.
C:\NVR\Solves\NORMANDY_NRM00_01\DCI-CH-W21A 1085041\Sheet\Lot_Specific\34_A-6_BSM1_LS.dwg 01/19/19 - 4:49 am					

BASEMENT FLOOR PLAN
 SCALE: 1/4" = 1'-0"



FIRST FLOOR PLAN
SCALE: 1/4" = 1'-0"

LEGEND

- BEARING WALL
- NON BEARING WALL
- JOIST/TRUSS
- LVL
- ENGINEERING PAGE NUMBER
- INDICATES BEARING FROM POINT-LOAD ABOVE
- JACKS
- BEAM/HEADER
- PAD FOOTING
- STEEL COLUMN
- PORTAL FRAME
- JOIST/TRUSS
- LVL
- ENGINEERING PAGE NUMBER

SEE FC DETAILS FOR FRAMING CONNECTORS

- FLOOR PLAN NOTES** RYAN
- ALL HEADERS ARE (2) 2x6 W/ 2x4 WALLS OR (3) 2x6 W/ 2x6 WALLS, UNLESS OTHERWISE NOTED.
 - ALL HEADERS TO HAVE (1) 2x4 OR 2x6 JACK AND KING STUD EACH END, UNLESS OTHERWISE NOTED.
 - ALL EXTERIOR WALLS TO BE 4" W/ OSB OR 3 1/2" W/ T-PLY, ALL INTERIOR WALLS TO BE 3 1/2", UNLESS OTHERWISE NOTED.
 - HATCHED AREAS INDICATE DROPPED CEILINGS. ALL DROPPED CEILINGS ARE 12" UNLESS OTHERWISE NOTED.
 - SEE "BRACED WALL PANEL DETAIL SHEET" FOR SPECIAL WALL FRAMING LOCATIONS AND HEADER SIZES, IF APPLICABLE.
 - SEE STANDARD DETAIL CATEGORY "IT" SHEET(S) FOR INTERIOR TRIM DETAILS.
 - SEE ARCHITECTURAL DETAIL SHEET "AD" FOR HOUSE SPECIFIC INTERIOR TRIM OPTION TABLE.
 - ALL WINDOWS HAVE 7'-0 1/2" HEADER HEIGHT UNLESS OTHERWISE NOTED.
 - ALL HEADERS IN NON-BEARING WALLS SHALL BE A SINGLE FLAT 2X4 OR 2X6 ATTACHED TO CRIPPLES ABOVE, UNLESS OTHERWISE NOTED.

- GYPSUM NOTES** RYAN
- AT GARAGE:**
GYPSUM BOARD AT COMMON WALLS, CEILINGS, BEAM WRAPS AND SUPPORTS PER STANDARD DETAIL FA-1(b) FIRE ASSEMBLIES OR AS REQUIRED BY LOCAL CODE.
- AT STAIRS:**
1/2" GYPSUM BOARD AT UNDERSIDE OF STAIRS AND WALLS IN CLOSET

LVL PLY TO PLY FASTENING SCHEDULE: (WHERE APPLICABLE BASED ON LVL USAGE)

- 1A - (2) PLY UP TO AND INCLUDING 11 7/8" TALL; FASTEN PLYS W/ (2) ROWS 16D NAILS AT 12" O.C.
- 2A - (2) PLY 14" TO AND 18" TALL (INCLUSIVE); FASTEN PLYS W/ (3) ROWS 16D NAILS AT 12" O.C.
- 3A - (2) PLY 20" TALL AND OVER; FASTEN PLYS W/ (4) ROWS 16D NAILS AT 12" O.C.
- 4A - (3) PLY UP TO AND INCLUDING 11 7/8" TALL; FASTEN PLYS W/ (2) ROWS 16D NAILS AT 12" O.C. FROM EACH SIDE
- 5A - (3) PLY 14" TO AND 18" TALL (INCLUSIVE); FASTEN PLYS W/ (3) ROWS 16D NAILS AT 12" O.C. FROM EACH SIDE
- 6A - (3) PLY 20" TALL AND OVER; FASTEN PLYS W/ (4) ROWS 16D NAILS AT 12" O.C. FROM EACH SIDE
- 1A - (4) PLY (ALL SIZES); FASTEN PLYS W/ (2) ROWS 1/2" DIAMETER A307 BOLTS AT 24" O.C. SEE SHOP DRAWING FOR ADDITIONAL INFORMATION.

FIELD INSTALLED FIRST FLOOR BEAM/HEADER SCHEDULE

IDENTIFIER	DESCRIPTION	LENGTH	OPTIONS	ENG. NUM.	REMARKS
BO8-2	LVL - 11-14	13'-5 9/16"	ELL	1017	1A (FIELD INSTALLED)
BO4-2	LVL - 11-14	13'-5"	ELL	1017	1A (FIELD INSTALLED)
BI	BEAM STEEL - W12X35	24'-2"		1021	
PF01-2	LVL - 11-04	20'-0"	GCB	1043	PORTAL FRAME, 1A

FIRST FLOOR JACK SCHEDULE

IDENTIFIER	DESCRIPTION	OPTIONS	ENG. NUM.	REMARKS
JO1	JACK - (5) 2X4 SP#1		1021	
JO2	JACK - (5) 2X6 SP#1		1021	
JO3	JACK - (2) 2X4 SPF STUD GRADE		1018	
JO4	JACK - (3) 2X4 SPF STUD GRADE		1017	
JO5	JACK - (3) 2X4 SPF STUD GRADE		1017	
JO6	JACK - (2) 2X4 SPF STUD GRADE		1057	
JO7	JACK - (2) 2X4 SPF STUD GRADE		1057	
JO8	JACK - (5) 2X4 SP#1		1023	
JO9	JACK - (2) 2X4 SPF STUD GRADE	GCB, GCF	1043	
JO10	JACK - (2) 2X4 SPF STUD GRADE	GCB, GCF	1043	
JO11	JACK - (2) 2X4 SPF STUD GRADE	ELL	1017	
JO12	JACK - (6) 2X4 SPF STUD GRADE	ELL	1017	
JO13	JACK - (6) 2X4 SPF STUD GRADE	ELL	1017	
JO14	JACK - (5) 2X4 SP#1	ELL	2000	
JO15	JACK - (5) 2X4 SP#1	ELL	2000	
JO16	JACK - (2) 2X4 SPF STUD GRADE	ELL	1041	
JO17	JACK - (2) 2X4 SPF STUD GRADE	ELL	1007	
JO18	JACK - (2) 2X4 SPF STUD GRADE	ELL	1007	
JO19	JACK - (2) 2X4 SPF STUD GRADE	ELL	1007	

REMARKS

REV. NO.	DATE	DESCRIPTION
1	08/01/16	N.L. - DRAWING ALIGNMENT
2	11/05/16	TM - STANDARD DETAILS 3.0
3	07/17/17	SL5 - T-PLY CONVERSION PROJECT

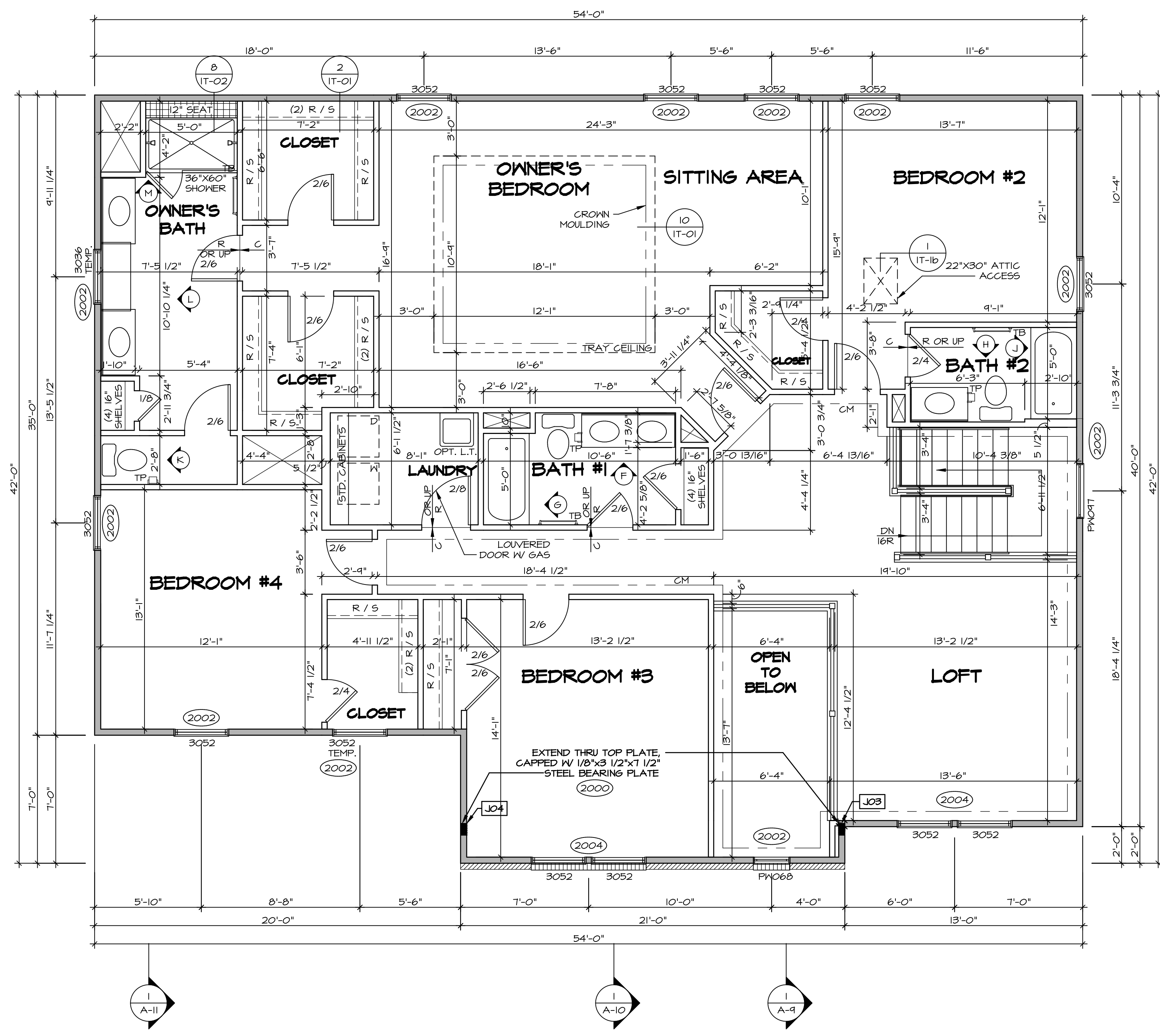
SET NO. NRM00
VERSION 01
DRAWN BY SGA
DATE: 6/29/15
OPTION

NORMANDY ARCHITECTS
FIRST FLOOR PLAN

NVR
NVR, Inc.
Architectural Services
100
5285 West...
Frederick, MD 21703

SHEET NO. **A-7**
35

C:\NVR\Solves\NORMANDY_ARCH00_01\DCI-CH-WZ-1A\108504\Sheet\Lot_Specific\35_A-7_Plan_15.dwg 07/18/19 - 4:49 am



SECOND FLOOR PLAN
SCALE: 1/4" = 1'-0"

LEGEND

- BEARING WALL
- NON BEARING WALL
- INDICATES BEARING FROM POINT-LOAD ABOVE
- JACKS
- BEAM/HEADER
- PAD FOOTING
- STEEL COLUMN
- PORTAL FRAME
- JOIST/TRUSS
- LVL
- ENGINEERING PAGE NUMBER

SEE FC DETAILS FOR FRAMING CONNECTORS

- FLOOR PLAN NOTES** RYAN
- ALL HEADERS ARE (2) 2x6 w/ 2x4 WALLS OR (3) 2x6 w/ 2x6 WALLS, UNLESS OTHERWISE NOTED.
 - ALL HEADERS TO HAVE (1) 2x4 OR 2x6 JACK AND KING STUD EACH END, UNLESS OTHERWISE NOTED.
 - ALL EXTERIOR WALLS TO BE 4" w/ OSB OR 3 1/2" w/ T-PLY, ALL INTERIOR WALLS TO BE 3 1/2", UNLESS OTHERWISE NOTED.
 - HATCHED AREAS INDICATE DROPPED CEILINGS, ALL DROPPED CEILINGS ARE 12" UNLESS OTHERWISE NOTED.
 - SEE "BRACED WALL PANEL DETAIL SHEET" FOR SPECIAL WALL FRAMING LOCATIONS AND HEADER SIZES, IF APPLICABLE.
 - SEE STANDARD DETAIL CATEGORY "IT" SHEET(S) FOR INTERIOR TRIM DETAILS.
 - SEE ARCHITECTURAL DETAIL SHEET "AD" FOR HOUSE SPECIFIC INTERIOR TRIM OPTION TABLE.
 - ALL WINDOWS HAVE 7'-0" 1/2" HEADER HEIGHT UNLESS OTHERWISE NOTED.
 - ALL HEADERS IN NON-BEARING WALLS SHALL BE A SINGLE FLAT 2x4 OR 2x6 ATTACHED TO GRIPPLES ABOVE, UNLESS OTHERWISE NOTED.

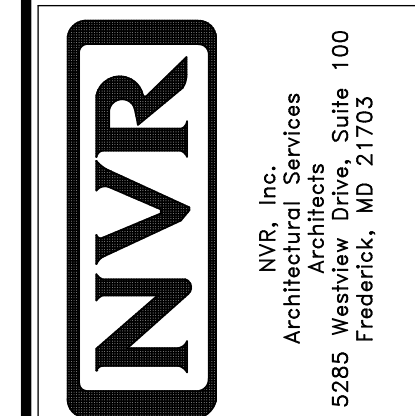
SECOND FLOOR JACK SCHEDULE

IDENTIFIER	DESCRIPTION	OPTIONS	ENG. NUM.	REMARKS
JO3	JACK - (5) 2X4 SPM	ELL	2000	
JO4	JACK - (5) 2X4 SPM	ELL	2000	

REVISIONS

REV. NO.	DATE	DESCRIPTION
1	08/07/16	NL - DRAWING ALIGNMENT
2	11/05/16	TH - STANDARD DETAILS 3.0
3	07/17/17	SLS - T-PLY CONVERSION PROJECT

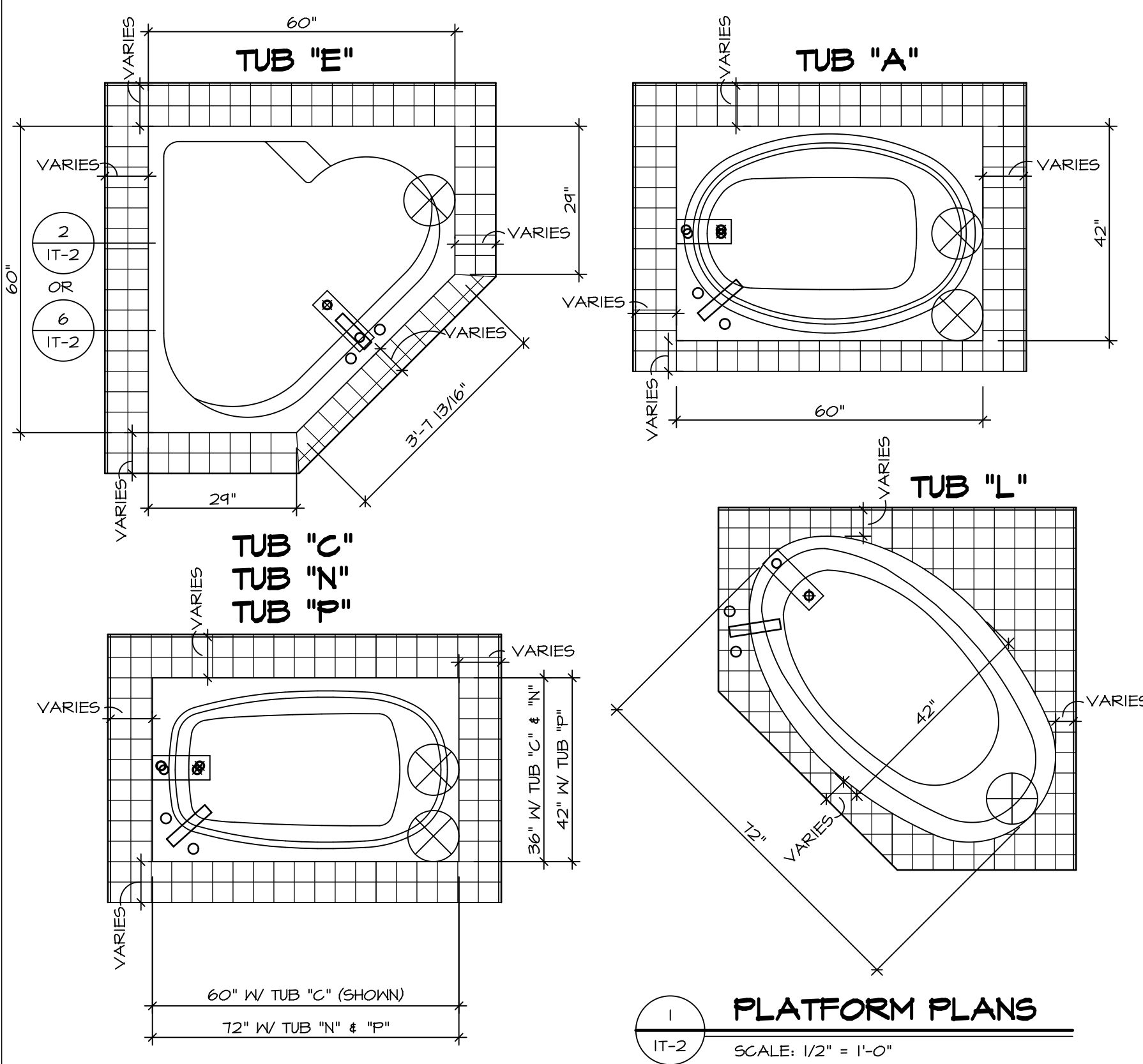
NVR, Inc., owner, expressly reserves its copyright in these plans. These plans are not to be reproduced, changed, copied, or otherwise used in any way without the prior written consent of NVR, Inc.



SET NO. NRM00
VERSION 01
DRAWN BY SGA
DATE: 6/29/15
OPTION

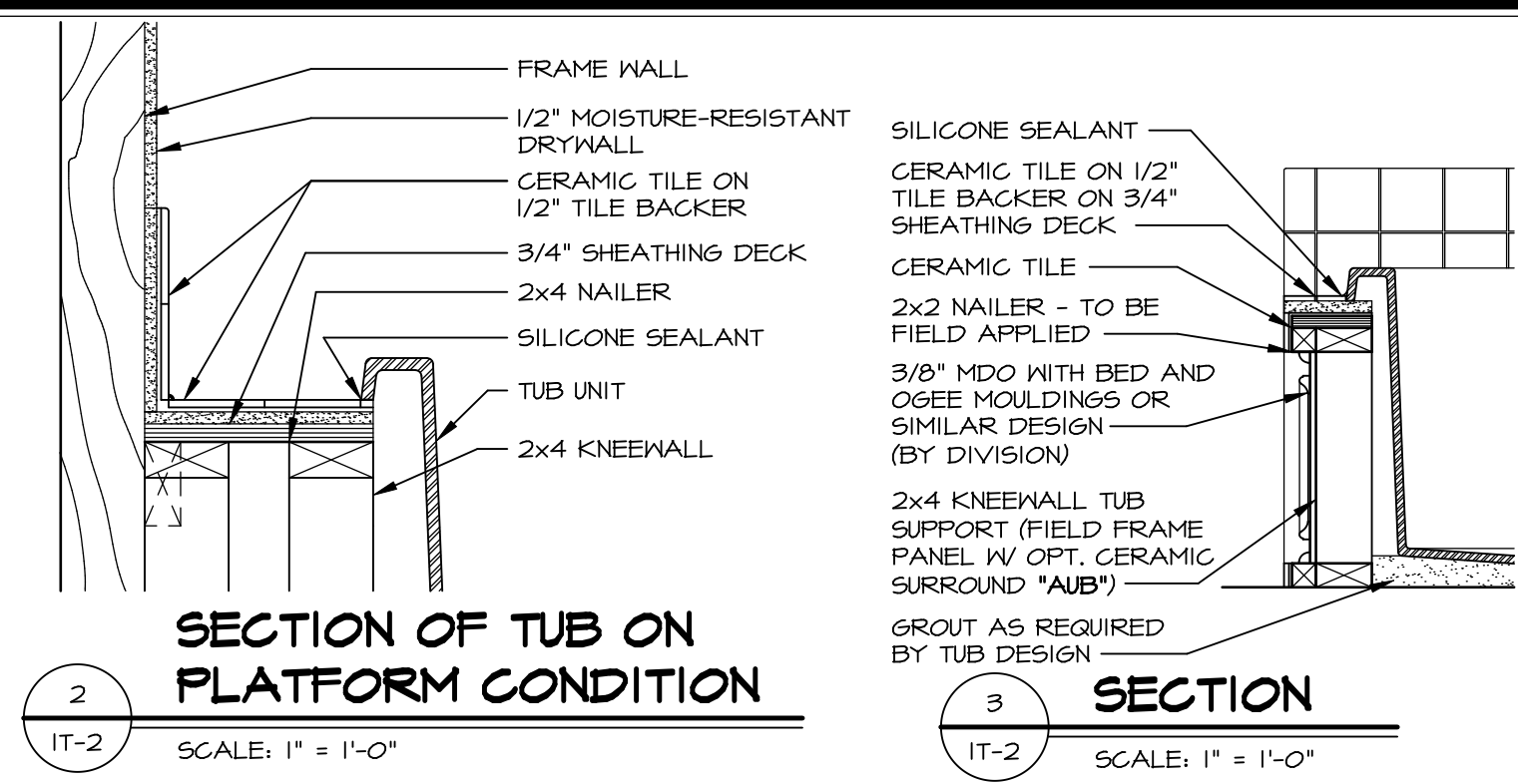
MODEL: NORMANDY
DRAWING TITLE: SECOND FLOOR PLAN
OPTION DESCRIPTION:

SHEET NO. A-8
38

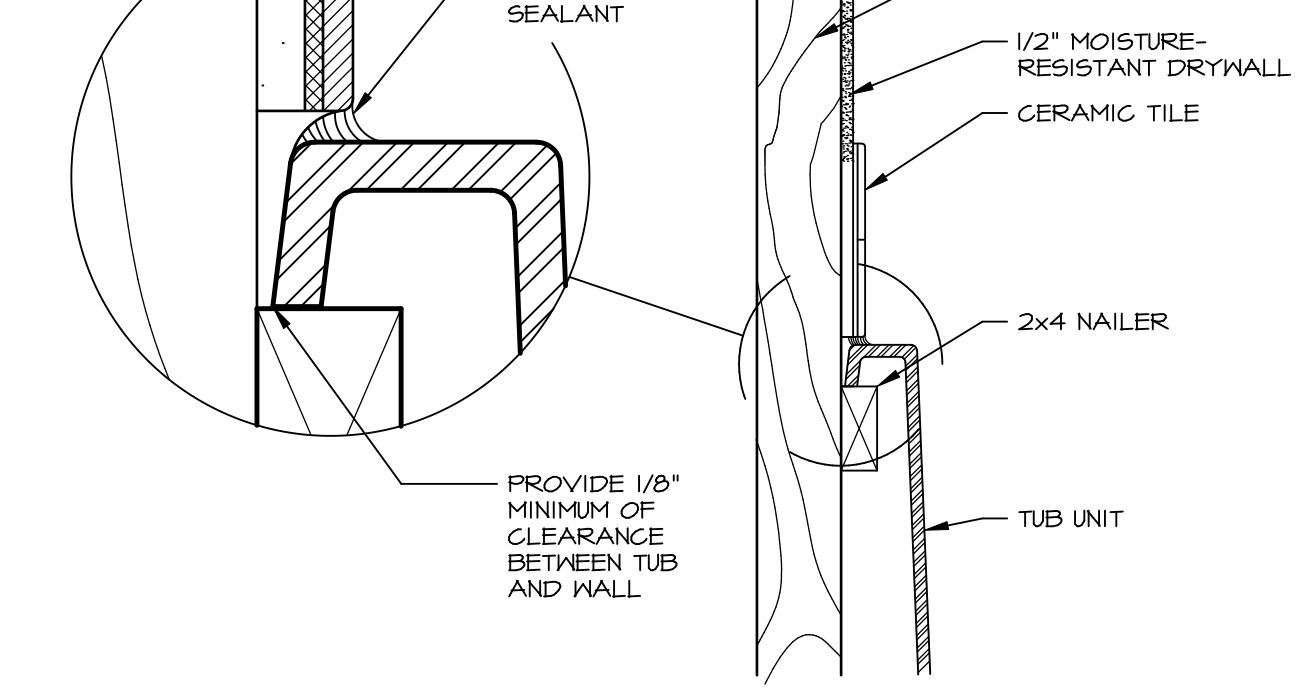


1 PLATFORM PLANS
SCALE: 1/2" = 1'-0"

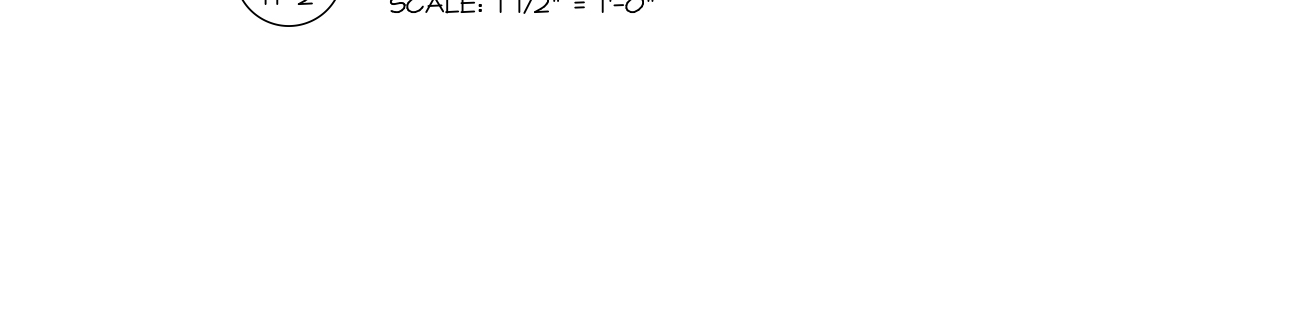
TUB	MANUF.	HEIGHT	WIDTH	LENGTH	TUB DECK PANEL HEIGHT
"A"	KOHLER/STERLING	18 3/4"	42"	60"	17 1/8"
"C"	KOHLER/STERLING	18 3/4"	36"	60"	17 1/8"
"E"	KOHLER/STERLING	19 1/2"	60"	60"	17 7/8"
"L"	KOHLER/STERLING	18 1/2"	42"	72"	16 7/8"
"N"	KOHLER/STERLING	18 3/4"	36"	72"	17 1/8"
"P"	KOHLER/STERLING	18 3/4"	42"	72"	17 1/8"



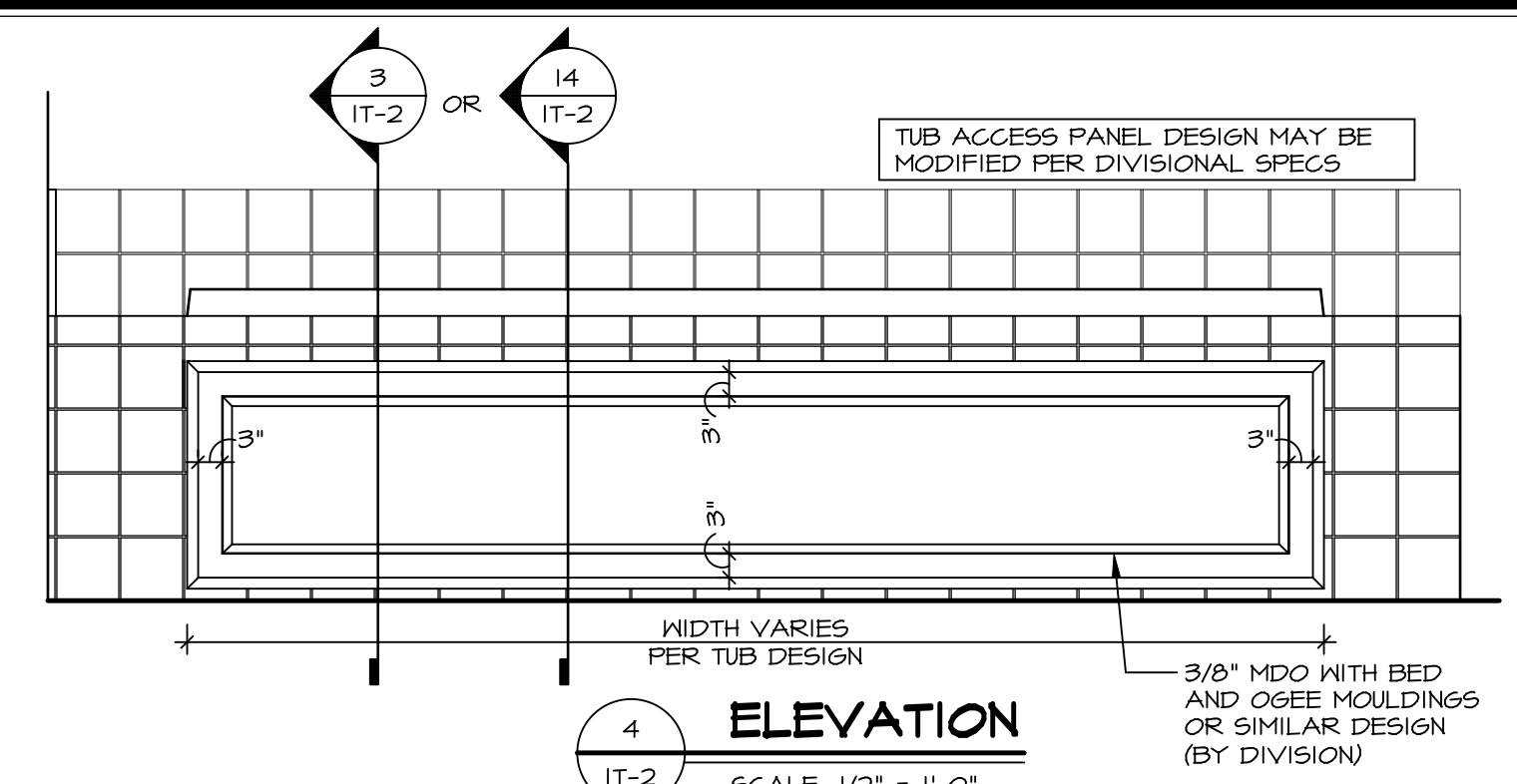
2 SECTION OF TUB ON PLATFORM CONDITION
SCALE: 1" = 1'-0"



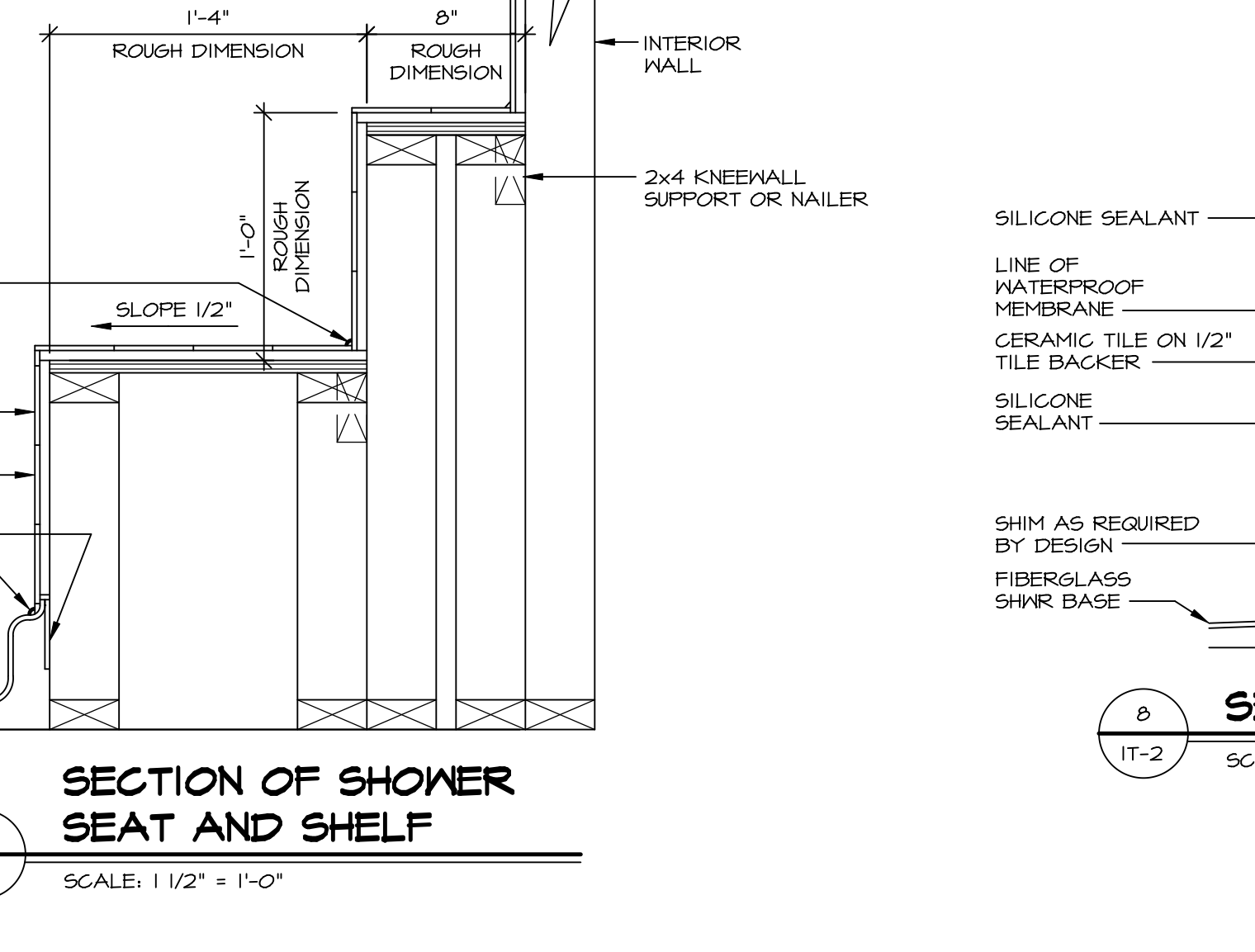
3 SECTION
SCALE: 1" = 1'-0"



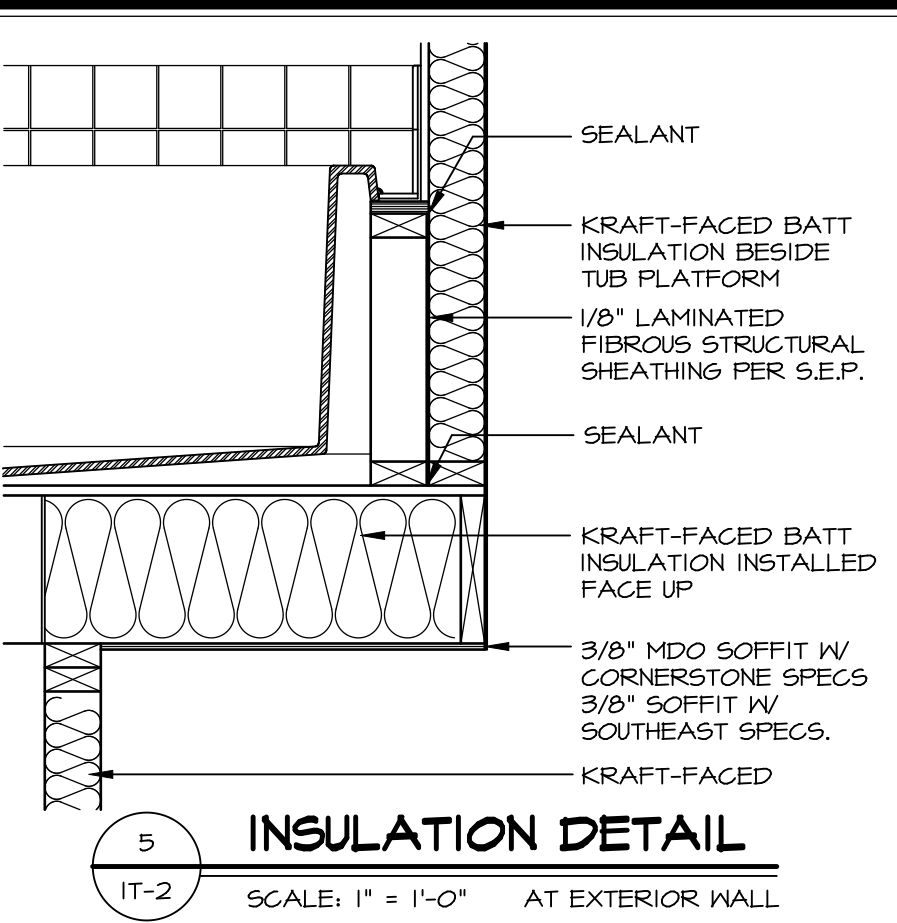
6 SECTION OF TUB TO WALL CONDITION
SCALE: 1 1/2" = 1'-0"



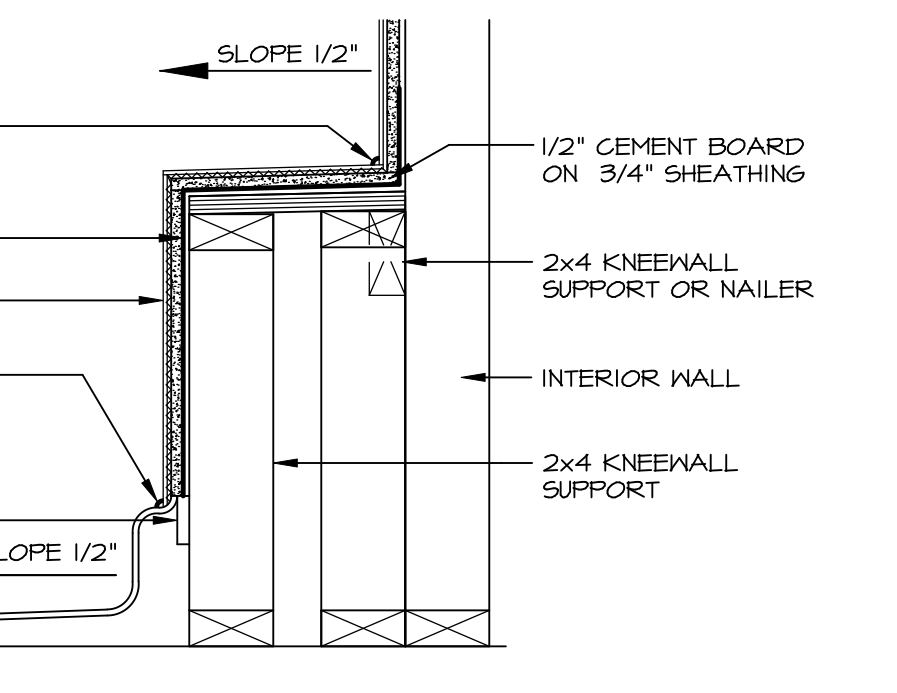
4 ELEVATION
SCALE: 1/2" = 1'-0"



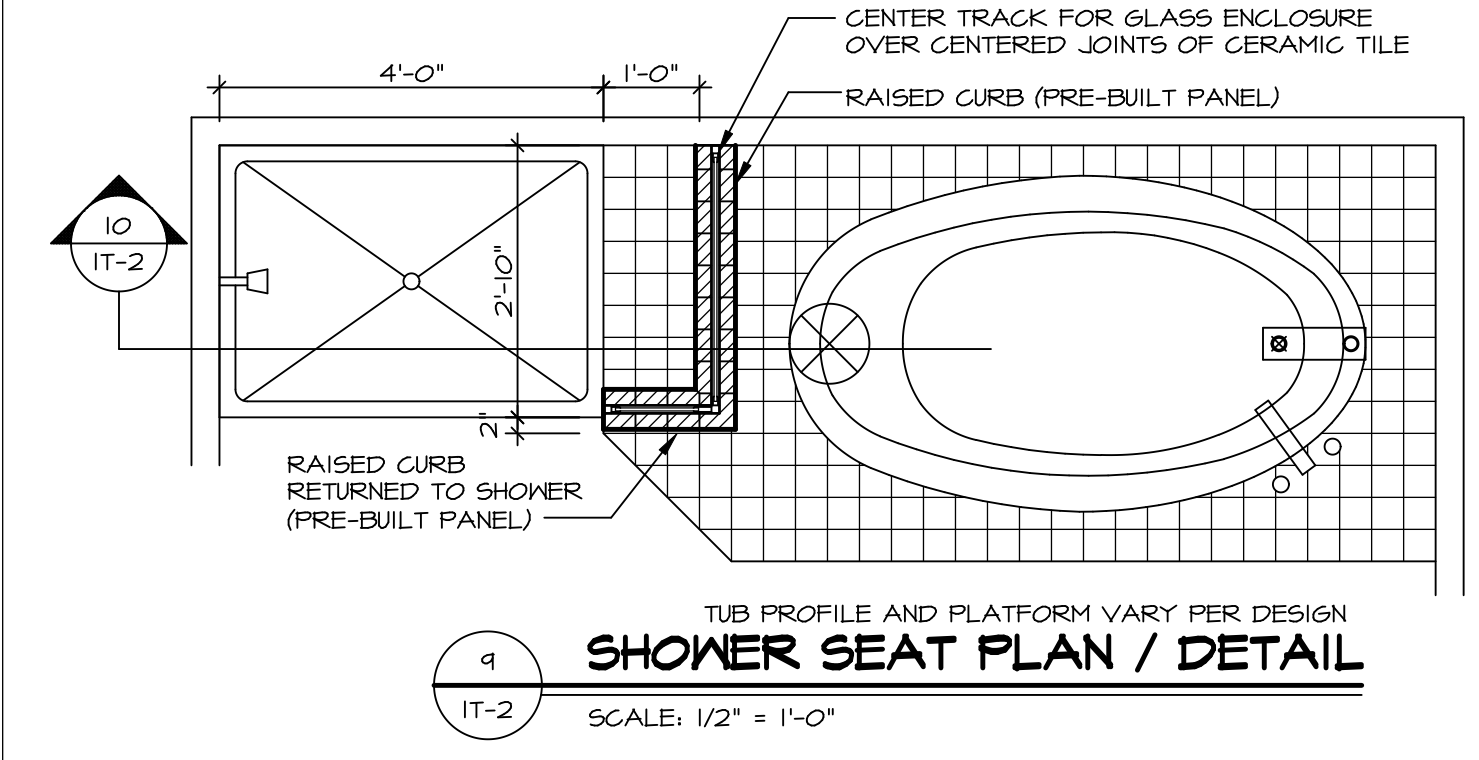
7 SECTION OF SHOWER SEAT AND SHELF
SCALE: 1 1/2" = 1'-0"



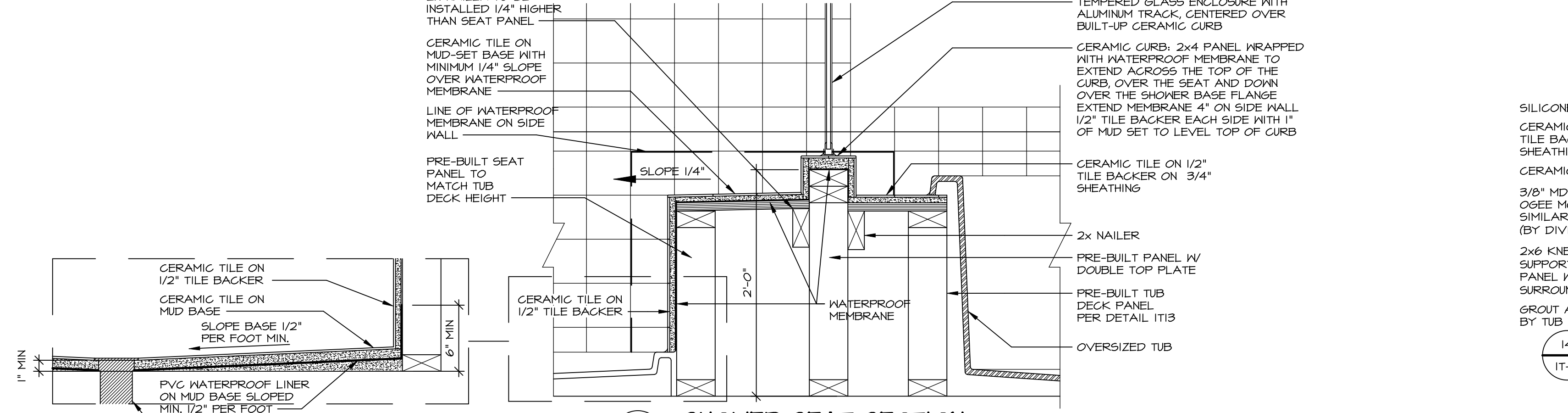
5 INSULATION DETAIL
SCALE: 1" = 1'-0" AT EXTERIOR WALL



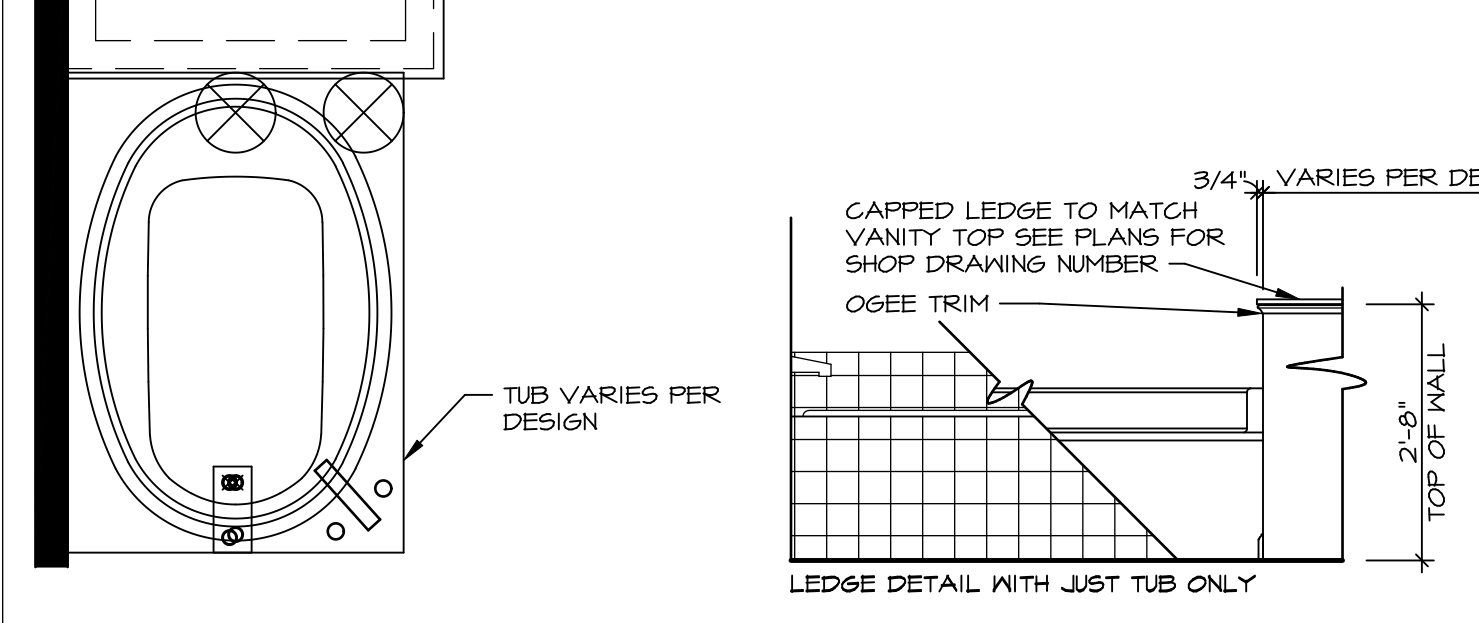
8 SECTION OF SHOWER SEAT
SCALE: 1 1/2" = 1'-0" FIBERGLASS SHOWER BASE



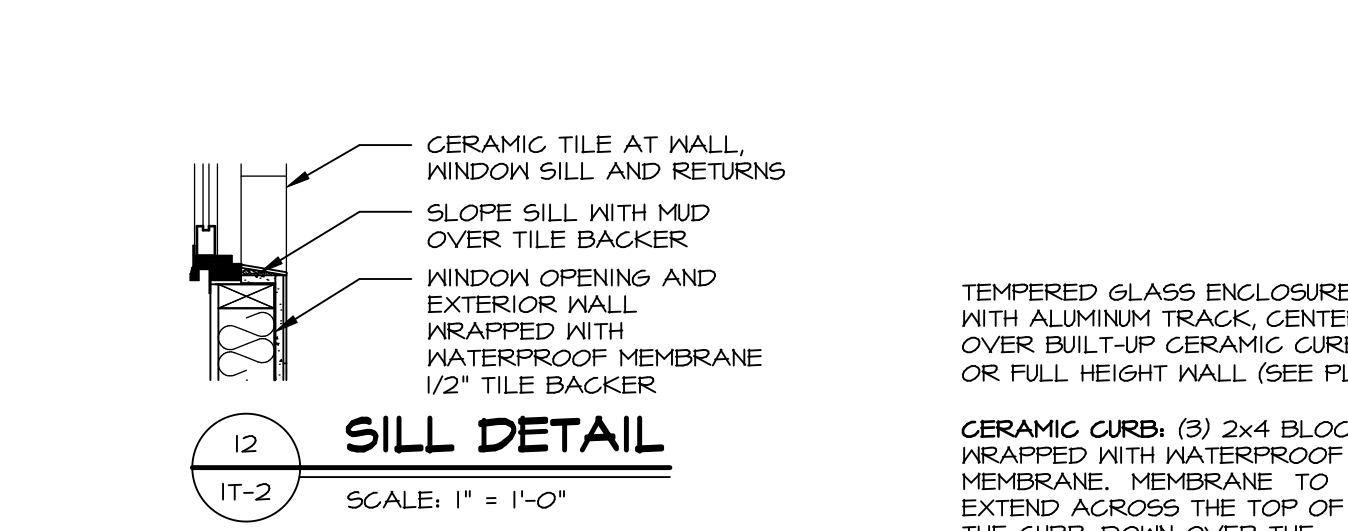
9 SHOWER SEAT PLAN / DETAIL
SCALE: 1/2" = 1'-0"



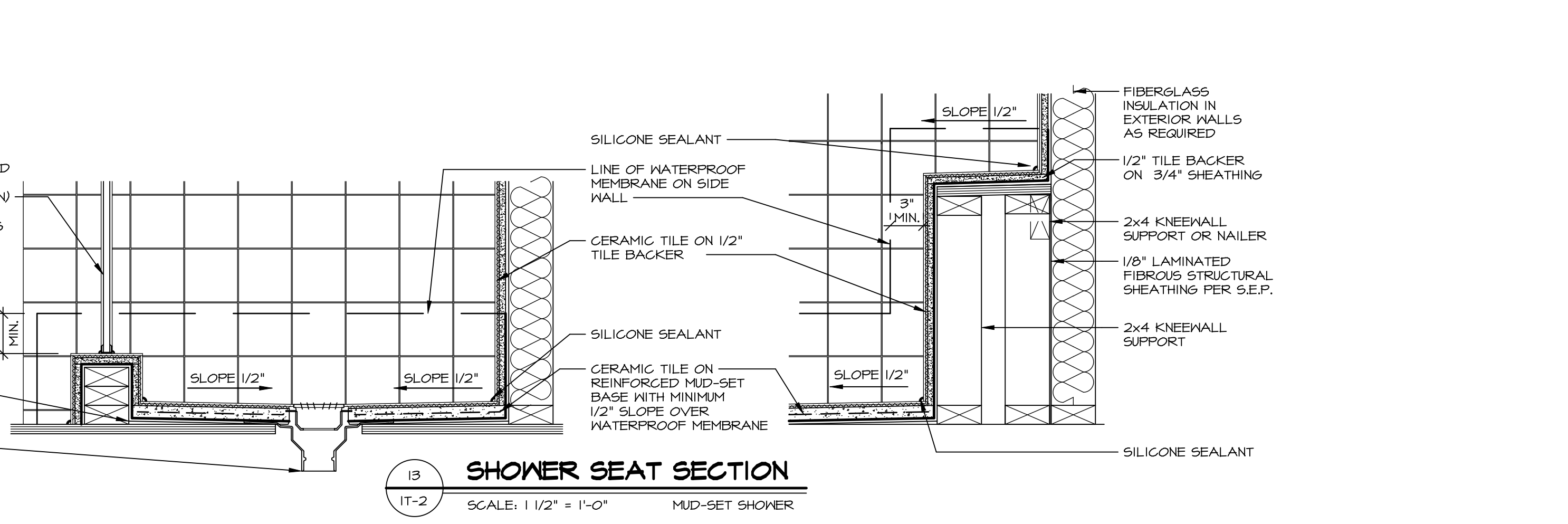
10 SHOWER SEAT SECTION
SCALE: 1 1/2" = 1'-0"



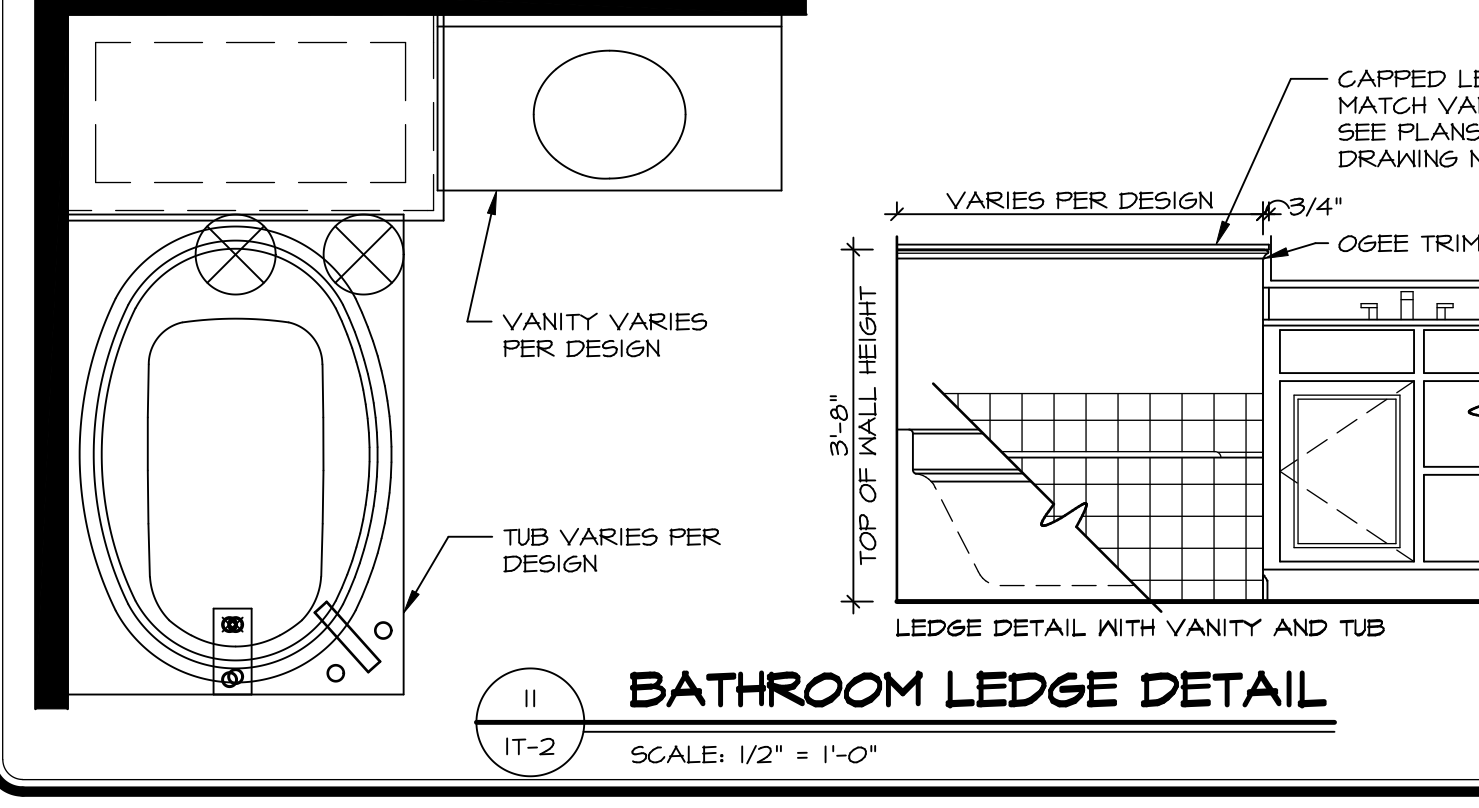
11 BATHROOM LEDGE DETAIL
SCALE: 1/2" = 1'-0"



12 SILL DETAIL
SCALE: 1" = 1'-0"



13 SHOWER SEAT SECTION
SCALE: 1 1/2" = 1'-0" MUD-SET SHOWER

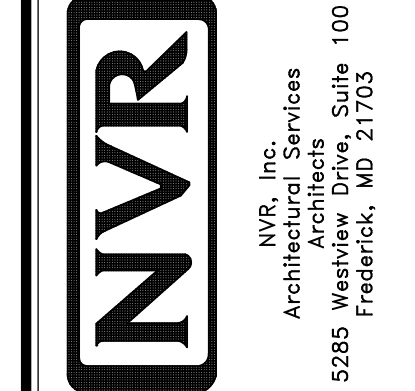


11 BATHROOM LEDGE DETAIL
SCALE: 1/2" = 1'-0"

REVISIONS

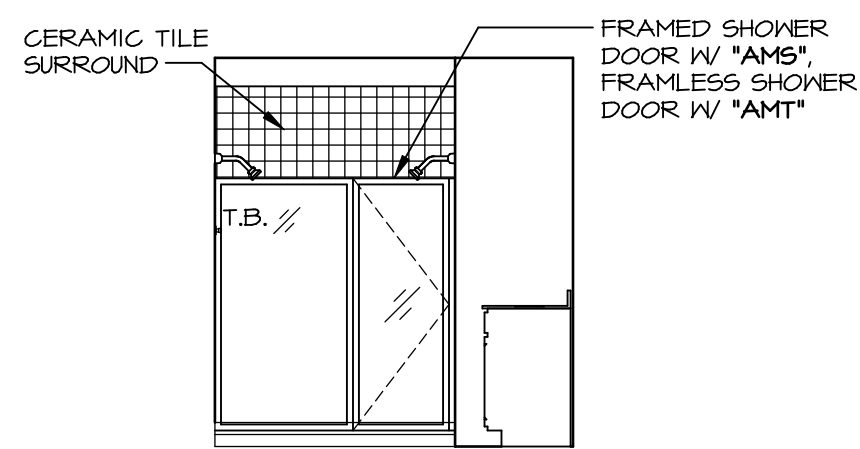
REV. NO.	DATE	DESCRIPTION
1	5/1/17	EBP - REVISED DETAIL 1 AND 11 TO REMOVE TUB ACCESS PANEL REF. (099 #15 3/4" x 1/2")
2	9/2/17	EBP - REVISED T-FLY NOTE TO CALL OUT LFS
3	9/2/17	EBP - REVISED NOTE ON DETAIL #1 - REVISED ORDER OF MATERIAL PAR#49304
4	8/28/18	EBP - DTL 8 / 19 ME REMOVED THE 2X6 BALKING AT BASE OF SHWR REQUEST #4663

NVR, Inc., owner, expressly reserves its common law copyright and other property rights in these plans. These plans are not to be reproduced, stored in a retrieval system, or transmitted in any form or by any means, electronic, mechanical, photocopying, recording, or by any information storage and retrieval system, without first obtaining the expressed written consent of NVR, Inc.

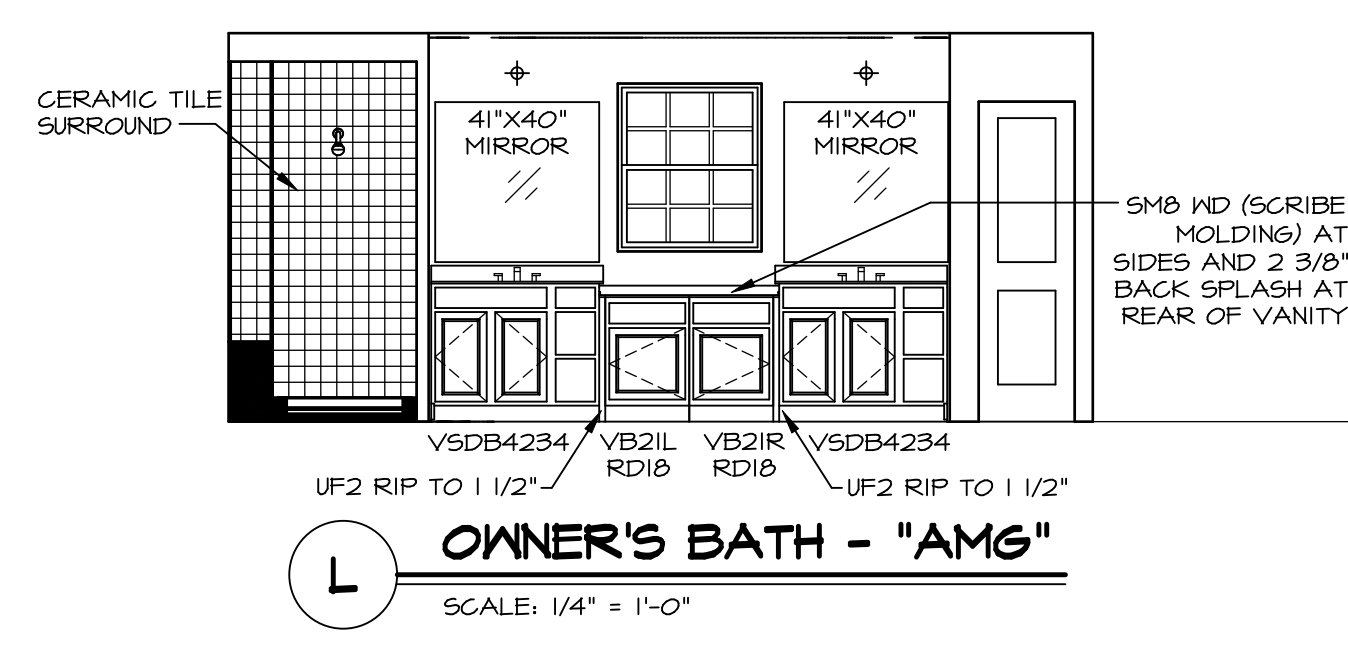


SET NO. NVR

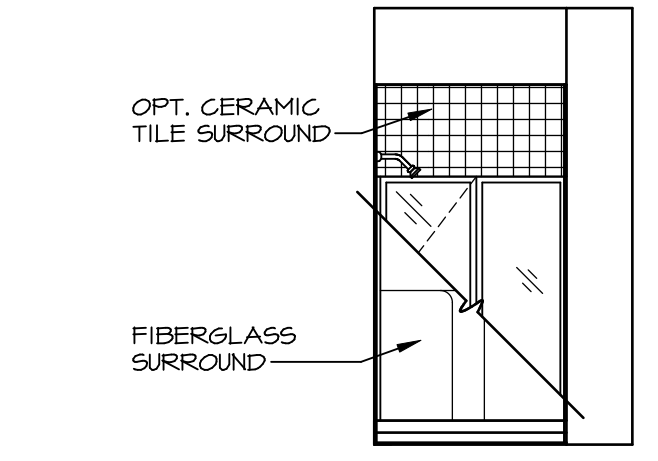
MODEL	DRAWING TITLE	OPTION
IT-2	STANDARD DETAILS	
	INTERIOR TRIM DETAILS	
	BATH DETAILS	
	OPTION DESCRIPTION	



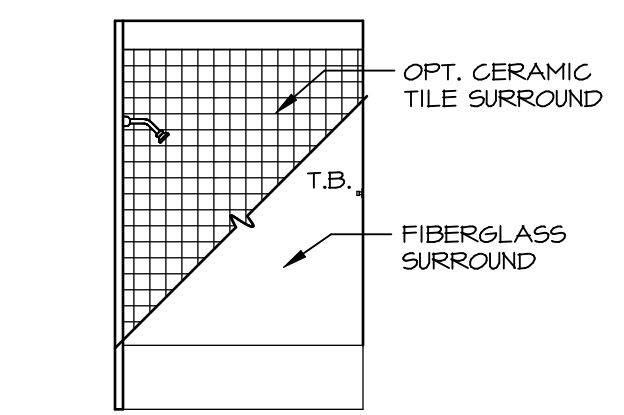
M OWNER'S BATH - "AMG"
SCALE: 1/4" = 1'-0"



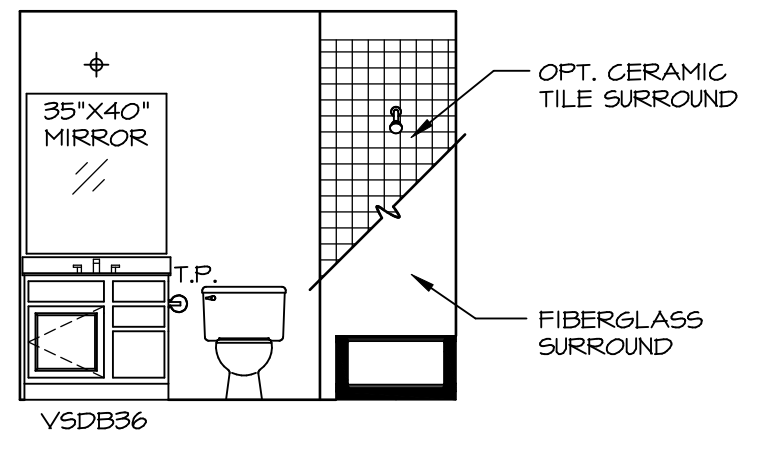
L OWNER'S BATH - "AMG"
SCALE: 1/4" = 1'-0"



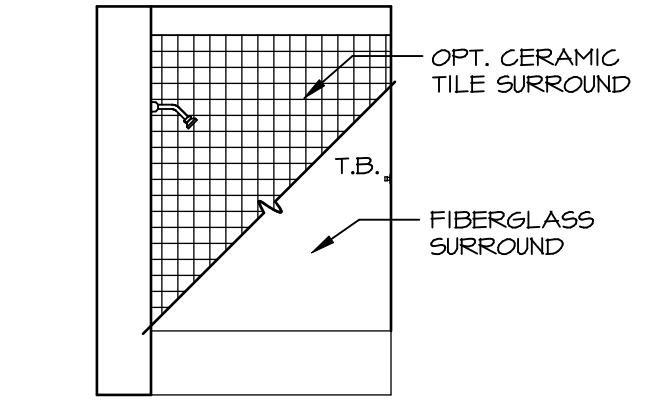
E FIRST FLOOR BATH - "BAR"
SCALE: 1/4" = 1'-0"



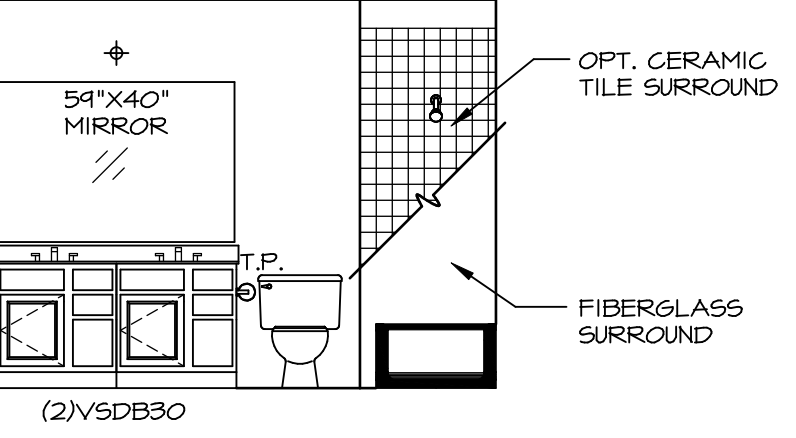
J BATH #2
SCALE: 1/4" = 1'-0"



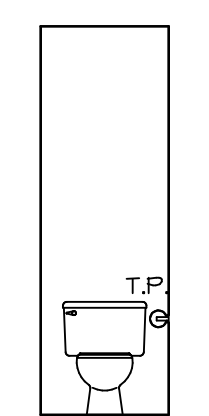
H BATH #2
SCALE: 1/4" = 1'-0"



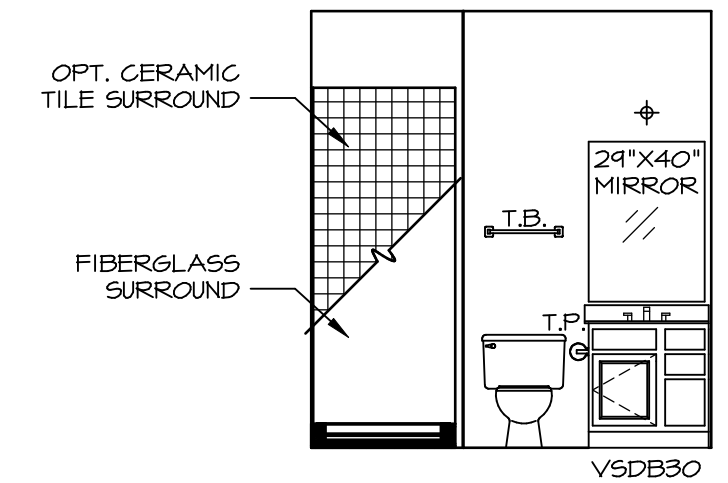
G BATH #1
SCALE: 1/4" = 1'-0"



F BATH #1
SCALE: 1/4" = 1'-0"



K OWNER'S BATH - "AMA" OR "AMG"
SCALE: 1/4" = 1'-0"



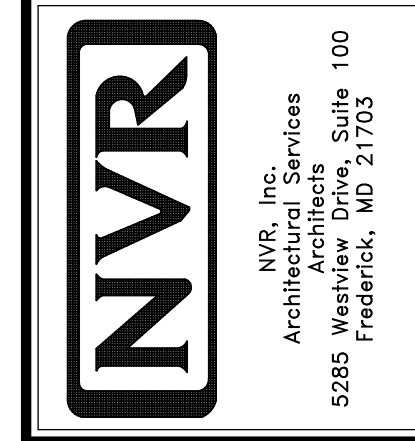
D FIRST FLOOR BATH - "BAR"
SCALE: 1/4" = 1'-0"

NOTES:

1. TEMPERED GLASS SHOWER ENCLOSURE WITH SWING DOOR OR OPTIONAL SLIDING DOOR BY DIVISION
2. TUB ACCESS PANELS PROVIDED AS NEEDED, ALL MATERIALS BY DIVISION
3. REFER TO SHEET (IT-2) FOR TUB AND SHOWER DETAILS.
4. ALL V5DB24-42 DRAWERS TO BE SET ON RIGHT HAND.
5. BATH ELEVATIONS ARE SHOWN PER PLAN.

REV. NO.	DATE	REMARKS
1	08/07/16	N.L. - DRAWING ALIGNMENT
2	11/15/16	TRV. - STANDARD DETAILS 5.0

NVR, Inc., owner, expressly reserves its copyright in these plans. These plans are not to be reproduced, changed, copied, or otherwise used in any way without the written consent of NVR, Inc.



SET NO. NRM00	VERSION 01
DRAWN BY SGA	DATE: 5/29/15
OPTION	

MODEL	NORMANDY
DRAWING TITLE	BATH ELEVATIONS
OPTION DESCRIPTION	