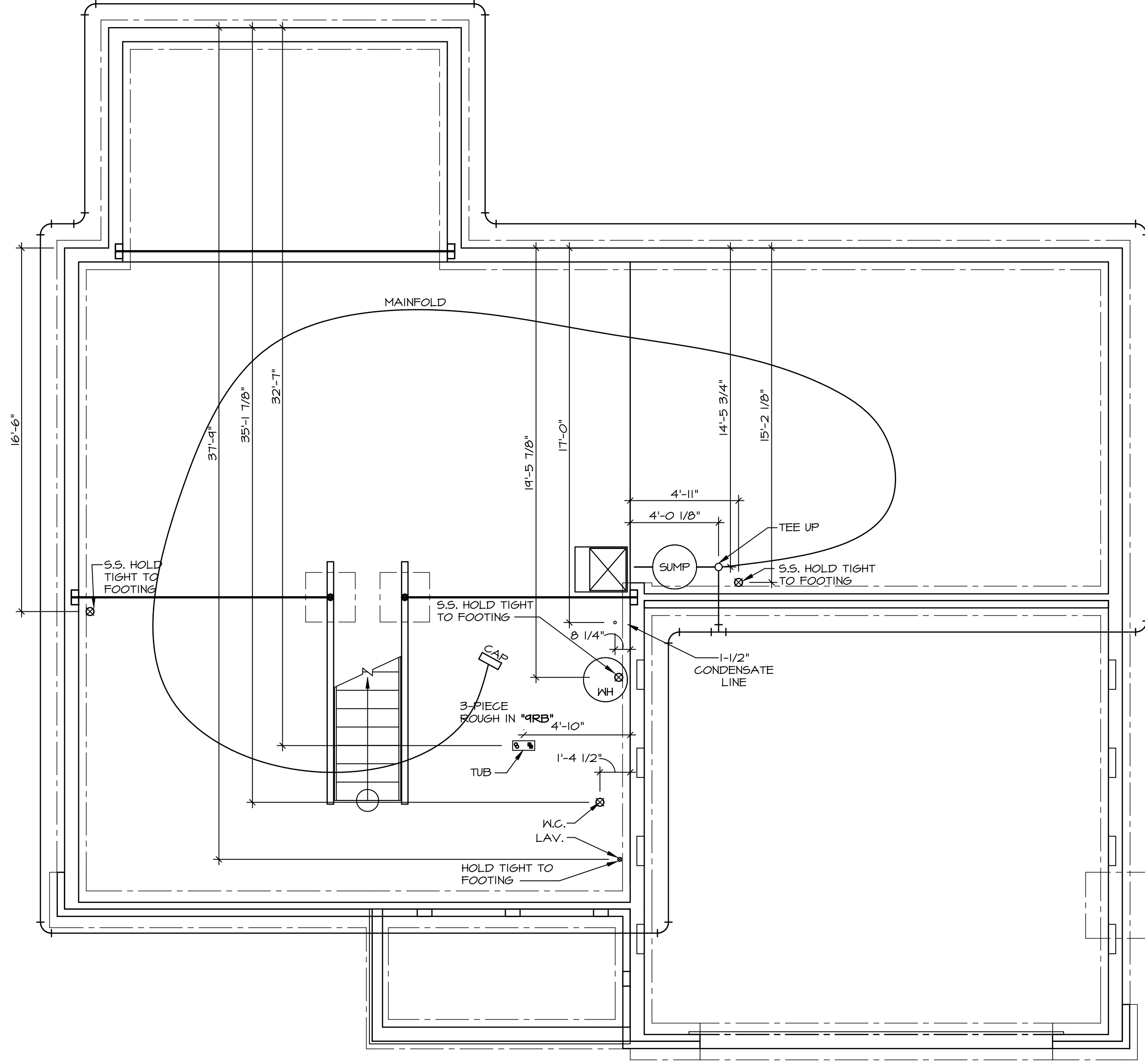


**PLUMBING PLAN**  
 SCALE: 1/4" = 1'-0"

<b>MODEL</b> <b>PALERMO</b>		<b>REV. NO.</b> REV. NO. DATE	
<b>SHEET NO.</b> <b>A-5</b>		<b>REMARKS</b>	
<b>VERSION</b> VERSION 03			
<b>DRAWING TITLE</b> PLUMBING PLAN			
<b>OPTION DESCRIPTION</b> OPTION			
<b>DATE:</b> DATE:			
<b>OPTION</b> OPTION			
<b>48</b>			



NVR, Inc. reserves all rights in these drawings and other property rights in these drawings, and no part of these drawings, reproduced, changed, or copied in any form or by any means, without the prior written consent of NVR, Inc.



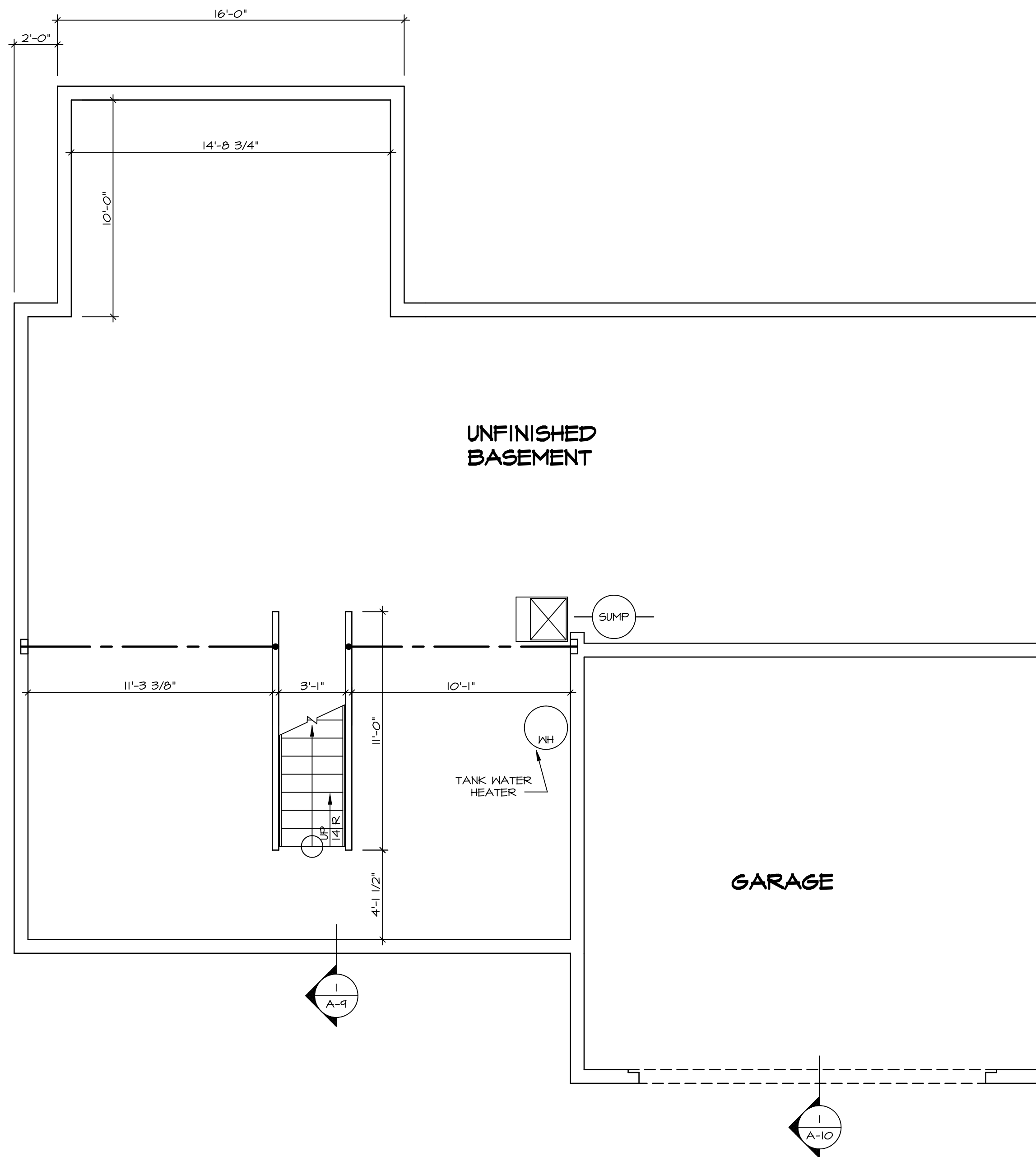
**PLUMBING PLAN**  
SCALE: 1/4" = 1'-0"

SHEET NO. <b>A-5</b>	MODEL <b>PALERMO</b>	SET NO. <b>PAL00</b>
OPTION DESCRIPTION <b>48</b>	DRAWING TITLE <b>PLUMBING PLAN</b>	VERSION <b>03</b>
	DATE:	DRAWN BY:
	OPTION:	

**NVR**  
Architectural Services  
5285 Westwood Drive, Suite 100  
Frederick, MD 21703

NVR, Inc., owner, expressly reserves its copyright in these plans. These plans are not to be reproduced, changed, copied, or otherwise used without the written consent of NVR, Inc.

REV. NO.	DATE	REMARKS



**LEGEND**

	BEARING WALL
	NON BEARING WALL
	INDICATES BEARING FROM POINT-LOAD ABOVE JACKS
	JACKS
	BEAM/HEADER
	PAD FOOTING
	STEEL COLUMN
	PORTAL FRAME
	JOIST/TRUSS
	LVL
	ENGINEERING PAGE NUMBER

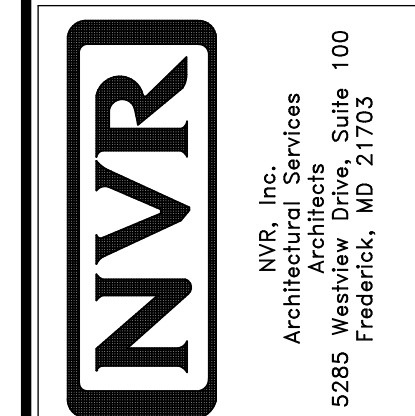
SEE FC DETAILS FOR FRAMING CONNECTORS

- FLOOR PLAN NOTES**
1. ALL HEADERS ARE (2) 2x6 w/ 2x4 WALLS OR (3) 2x6 w/ 2x6 WALLS, UNLESS OTHERWISE NOTED.
  2. ALL HEADERS TO HAVE (1) 2x4 OR 2x6 JACK EACH END, UNLESS OTHERWISE NOTED.
  3. ALL EXTERIOR WALLS TO BE 4" AND ALL INTERIOR WALLS TO BE 3 1/2", UNLESS OTHERWISE NOTED.
  4. HATCHED AREAS INDICATE DROPPED CEILINGS. ALL DROPPED CEILINGS ARE 12" UNLESS OTHERWISE NOTED.
  5. SEE "BRACED WALL PANEL DETAIL SHEET" FOR SPECIAL WALL FRAMING LOCATIONS AND HEADER SIZES, IF APPLICABLE.
  6. SEE STANDARD DETAIL CATEGORY "IT" SHEET(S) FOR INTERIOR TRIM DETAILS.
  7. SEE ARCHITECTURAL DETAIL SHEET "AD" FOR HOUSE SPECIFIC INTERIOR TRIM OPTION TABLE.
  8. ALL WINDOWS HAVE 7'-0" 1/2" HEADER HEIGHT UNLESS OTHERWISE NOTED.
  9. ALL CASED OPENINGS AT 7'-11", UNLESS OTHERWISE NOTED.

- GYPSUM NOTES**
- AT GARAGE:  
GYPSUM BOARD AT COMMON WALLS, CEILINGS, BEAM WRAPS AND SUPPORTS PER STANDARD DETAIL FA-1(b) FIRE ASSEMBLIES OR AS REQUIRED BY LOCAL CODE.
- AT STAIRS:  
1/2" GYPSUM BOARD AT UNDERSIDE OF STAIRS AND WALLS IN CLOSET

REV. NO.	DATE	REMARKS
1	08/05/18	TH - DRAWING ALIGNMENT

NVR, Inc., owner, expressly reserves its copyright in these plans. These plans are not to be reproduced, changed, copied, or otherwise used in any way without the written consent of NVR, Inc.



SHEET NO.	MODEL	SET NO.	VERSION	DRAWING TITLE	OPTION
A-6	PALERMO	PALOO	03	BASEMENT FLOOR PLAN	
51					

**BASEMENT FLOOR PLAN**  
SCALE: 1/4" = 1'-0"

FIRST FLOOR JACK SCHEDULE				
IDENTIFIER	DESCRIPTION	OPTIONS	ENG. NUM.	REMARKS
J101	JACK - (2) 2x4 SPF STUD GRADE		1072	
J102	JACK - (2) 2x4 SPF STUD GRADE		1072	
J106	JACK - (2) 2x4 SPF STUD GRADE		1012	
J107	JACK - (2) 2x4 SPF STUD GRADE		1012	
J108	JACK - (2) 2x4 SPF STUD GRADE		1012	
J104	JACK - (3) 2x4 SPF STUD GRADE	6CB	1046	
J110	JACK - (3) 2x4 SPF STUD GRADE	6CB	1046	
J120	JACK - (4) 2x6 SPF STUD GRADE	MAA	1014	
J121	JACK - (3) 2x6 SPF STUD GRADE	MAA	1014	FIELD INSTALLED
J122	JACK - (3) 2x4 SPF STUD GRADE	SRM	1040	
J124	JACK - (3) 2x4 SPF STUD GRADE	ELC	1021	
J125	JACK - (2) 2x4 SPF STUD GRADE	ELC	1004	
J126	JACK - (2) 2x4 SPF STUD GRADE	ELC	1004	
J127	JACK - (2) 2x4 SPF STUD GRADE	ELC	1038	
J128	JACK - (2) 2x4 SPF STUD GRADE	ELC	1038	
J133	JACK - (2) 2x4 SPF STUD GRADE	6CB, MAV	1044, 1131	CRIPPLES
J134	JACK - (2) 2x4 SPF STUD GRADE	6CB, MAV	1044, 1131	CRIPPLES
J138	JACK - (2) 2x4 SPF STUD GRADE	ELC	1021	
J158	JACK - (3) 2x4 SPF STUD GRADE	EVA, MAV		
J160	JACK - (3) 2x4 SPF STUD GRADE	EVA, MAV		
J171	JACK - (2) 2x4 SPF STUD GRADE	ELC, EVA		

**LVL PLY TO PLY FASTENING SCHEDULE:**

1A - (2) FLY UP TO AND INCLUDING 1 7/8" TALL; FASTEN FLIES W/ (2) ROWS 16D NAILS AT 12" O.C.  
 2A - (2) FLY 14" TO AND INCLUDING 18" TALL (INCLUSIVE); FASTEN FLIES W/ (3) ROWS 16D NAILS AT 12" O.C.  
 3A - (2) FLY 20" TALL AND OVER; FASTEN FLIES W/ (4) ROWS 16D NAILS AT 12" O.C.  
 4A - (3) FLY UP TO AND INCLUDING 1 7/8" TALL; FASTEN FLIES W/ (2) ROWS 16D NAILS AT 12" O.C. FROM EACH SIDE  
 5A - (3) FLY 14" TO AND INCLUDING 18" TALL (INCLUSIVE); FASTEN FLIES W/ (3) ROWS 16D NAILS AT 12" O.C. FROM EACH SIDE  
 6A - (3) FLY 20" TALL AND OVER; FASTEN FLIES W/ (4) ROWS 16D NAILS AT 12" O.C. FROM EACH SIDE

FIRST FLOOR BEAM/HEADER SCHEDULE					
IDENTIFIER	DESCRIPTION	LENGTH	OPTIONS	ENG. NUM.	REMARKS
B101-3	LVL - 16	14'-4 1/2"	MAA	1014	5A, FIELD INSTALL
B102	BEAM STEEL - W12X40	22'-3 1/2"	ELA, ELC, ELL, MAV	1057, 1133	
B107-2	LVL - 14	17'-4"	MAV	1050, 1051	2A, FIELD INSTALL

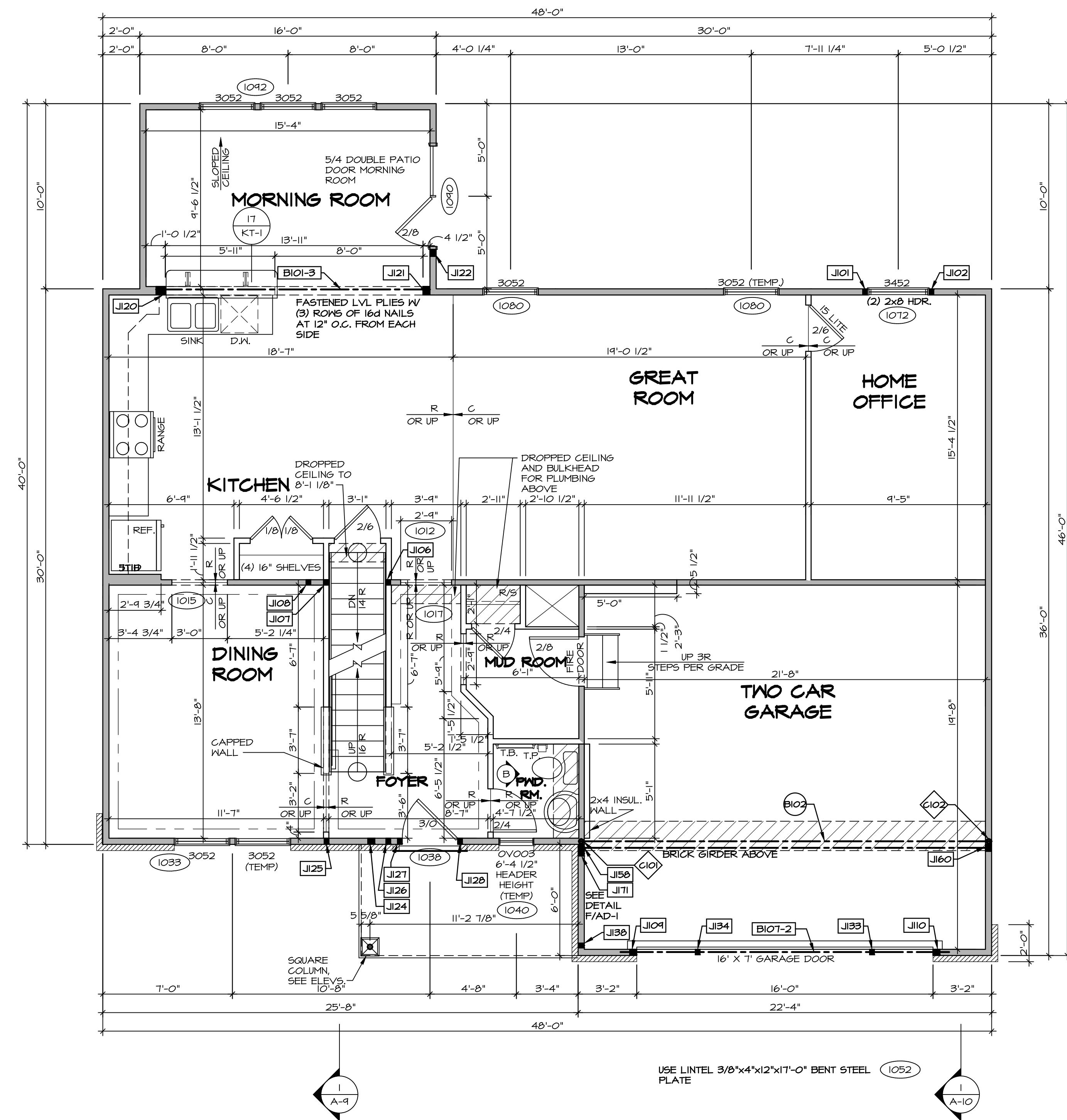
LEGEND	
	BEARING WALL
	NON BEARING WALL
	INDICATES BEARING FROM POINT-LOAD ABOVE
	JACKS
	BEAM/HEADER
	PAD FOOTING
	STEEL COLUMN
	PORTAL FRAME
	JOIST/TRUSS
	LVL
	ENGINEERING PAGE NUMBER

SEE FC DETAILS FOR FRAMING CONNECTORS

STEEL COLUMN SCHEDULE					
IDENTIFIER	STYLE	HEIGHT	OPTIONS	ENG. NUM.	REMARKS
C101	STANCHION - 3 IN SCHED 40	9'-0 11/16"	FBA	1057, 1133, 1128	
C102	STANCHION - 3 IN SCHED 40	9'-0 11/16"	FBA	1057, 1133, 1128	

- FLOOR PLAN NOTES**
- ALL HEADERS ARE (2) 2x6 W/ 2x4 WALLS OR (3) 2x6 W/ 2x6 WALLS, UNLESS OTHERWISE NOTED.
  - ALL HEADERS TO HAVE (1) 2x4 OR 2x6 JACK AND KING STUD EACH END, UNLESS OTHERWISE NOTED.
  - ALL EXTERIOR WALLS TO BE 4" W/ OSB OR 3 1/2" W/ T-PLY, ALL INTERIOR WALLS TO BE 3 1/2", UNLESS OTHERWISE NOTED.
  - HATCHED AREAS INDICATE DROPPED CEILINGS. ALL DROPPED CEILINGS ARE 12" UNLESS OTHERWISE NOTED.
  - SEE "BRACED WALL PANEL DETAIL SHEET" FOR SPECIAL WALL FRAMING LOCATIONS AND HEADER SIZES, IF APPLICABLE.
  - SEE STANDARD DETAIL CATEGORY "IT" SHEET(S) FOR INTERIOR TRIM DETAILS.
  - SEE ARCHITECTURAL DETAIL SHEET "AD" FOR HOUSE SPECIFIC INTERIOR TRIM OPTION TABLE.
  - ALL WINDOWS HAVE 7'-0 1/2" HEADER HEIGHT UNLESS OTHERWISE NOTED.
  - ALL HEADERS IN NON-BEARING WALLS SHALL BE A SINGLE FLAT 2x4 OR 2x6 ATTACHED TO CRIPPLES ABOVE, UNLESS OTHERWISE NOTED.

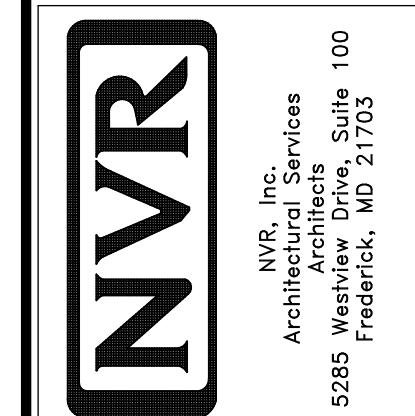
- GYPSUM NOTES**
- AT GARAGE:  
 GYPSUM BOARD AT COMMON WALLS, CEILING, BEAM WRAPS AND SUPPORTS PER STANDARD DETAIL FA-1(b) FIRE ASSEMBLIES OR AS REQUIRED BY LOCAL CODE.
- AT STAIRS:  
 1/2" GYPSUM BOARD AT UNDERSIDE OF STAIRS AND WALLS IN CLOSET



**FIRST FLOOR PLAN**  
 SCALE: 1/4" = 1'-0"

REV. NO.	DATE	REMARKS
1	08/04/16	TH - DRAWING ALIGNMENT
2	07/12/17	SLS - T-PLY CONVERSION PROJECT

NVR, Inc., owner, expressly reserves its copyright in the drawings and plans. These plans are not to be reproduced, changed, copied, or otherwise used without the written consent of NVR, Inc.

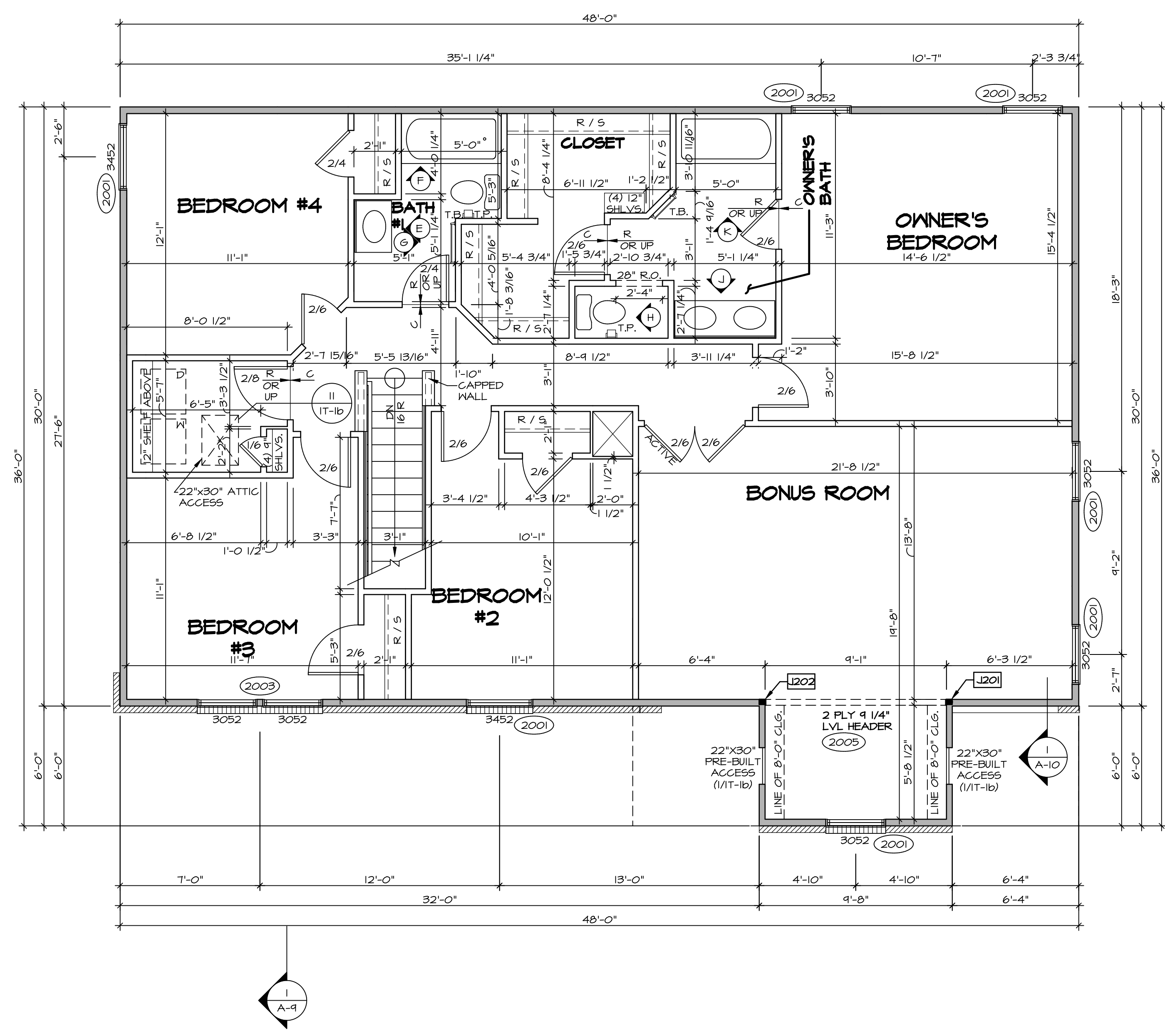


MODEL	SET NO. PAL00
DRAWING TITLE	VERSION 03
OPTION DESCRIPTION	DRAWN BY
	DATE:
	OPTION
SHEET NO.	A-7
	53

SECOND FLOOR JACK SCHEDULE				
IDENTIFIER	DESCRIPTION	OPTIONS	ENG. NUM.	REMARKS
J201	JACK - (2) 2X4 SFF STUD GRADE	MAV	2005	
J202	JACK - (2) 2X4 SFF STUD GRADE	MAV	2005	

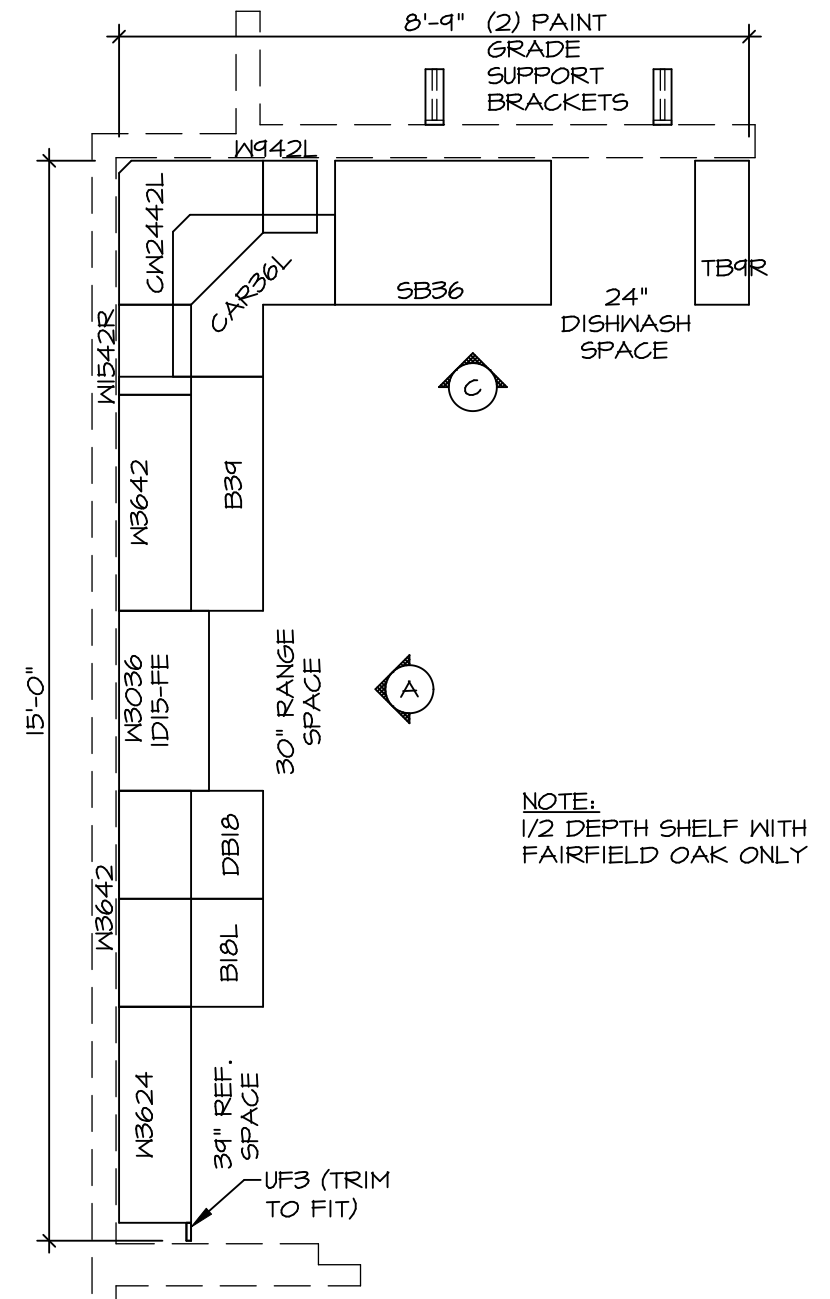
LEGEND	
	BEARING WALL
	NON BEARING WALL
	INDICATES BEARING FROM POINT-LOAD ABOVE
	JACKS
	BEAM/HEADER
	PAD FOOTING
	STEEL COLUMN
	PORTAL FRAME
	JOIST/TRUSS
	LVL
	ENGINEERING PAGE NUMBER

- FLOOR PLAN NOTES**
- ALL HEADERS ARE (2) 2x6 w/ 2x4 WALLS OR (3) 2x6 w/ 2x6 WALLS, UNLESS OTHERWISE NOTED.
  - ALL HEADERS TO HAVE (1) 2x4 OR 2x6 JACK AND KING STUD EACH END, UNLESS OTHERWISE NOTED.
  - ALL EXTERIOR WALLS TO BE 4" w/ OSB OR 3 1/2" w/ T-PLY, ALL INTERIOR WALLS TO BE 3 1/2", UNLESS OTHERWISE NOTED.
  - HATCHED AREAS INDICATE DROPPED CEILINGS. ALL DROPPED CEILINGS ARE 12" UNLESS OTHERWISE NOTED.
  - SEE "BRACED WALL PANEL DETAIL SHEET" FOR SPECIAL WALL FRAMING LOCATIONS AND HEADER SIZES, IF APPLICABLE.
  - SEE STANDARD DETAIL CATEGORY "1T" SHEET(S) FOR INTERIOR TRIM DETAILS.
  - SEE ARCHITECTURAL DETAIL SHEET "AD" FOR HOUSE SPECIFIC INTERIOR TRIM OPTION TABLE.
  - ALL WINDOWS HAVE 7'-0 1/2" HEADER HEIGHT UNLESS OTHERWISE NOTED.
  - ALL HEADERS IN NON-BEARING WALLS SHALL BE A SINGLE FLAT 2x4 OR 2x6 ATTACHED TO CRIPPLES ABOVE, UNLESS OTHERWISE NOTED.



**SECOND FLOOR PLAN**  
SCALE: 1/4" = 1'-0"

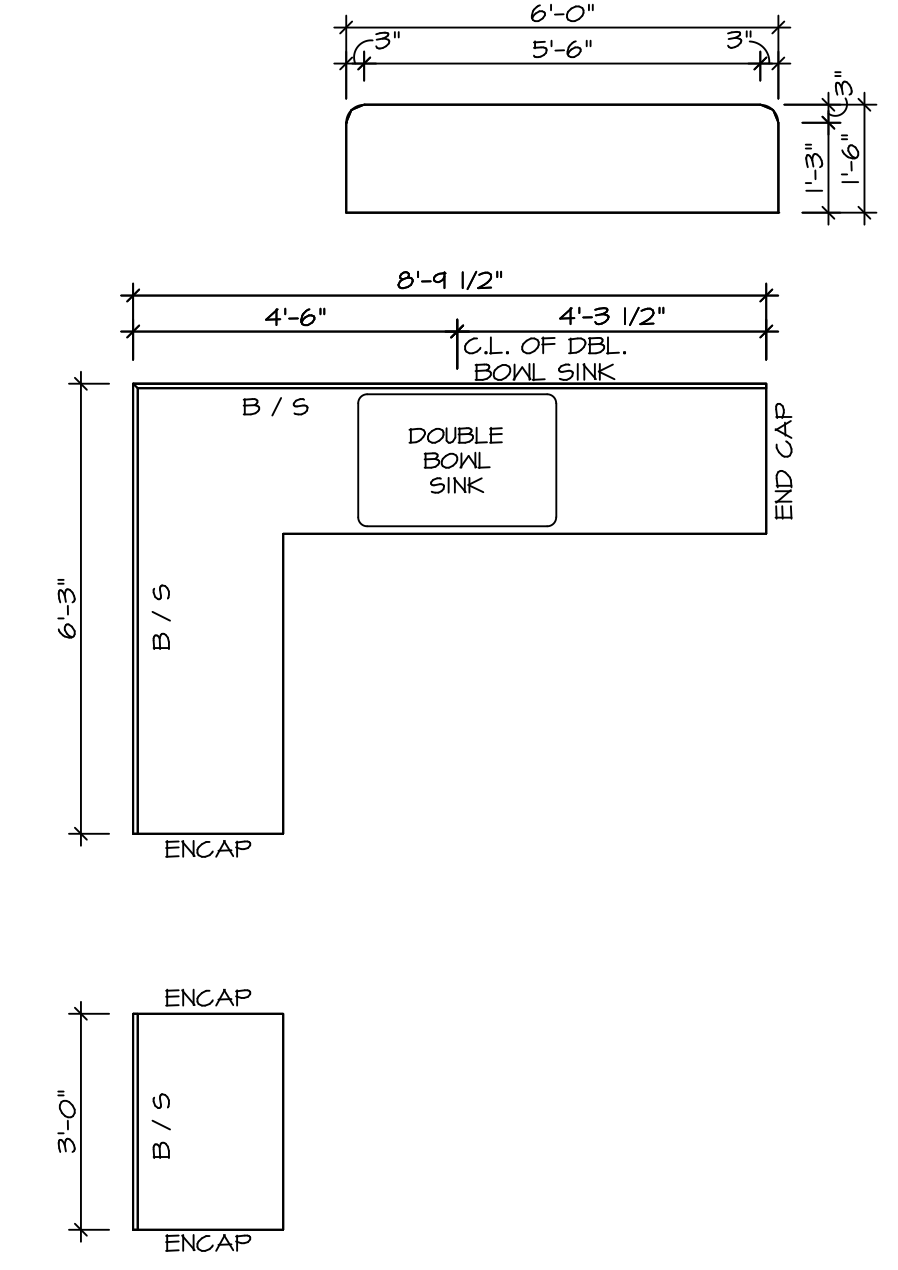
SHEET NO. <b>A-8</b>	MODEL <b>PALERMO</b>	SET NO. PALOO	REVISIONS	DATE	REMARKS
		VERSION 03	1	08/04/16	TH - DRAWING ALIGNMENT
DRAWING TITLE <b>SECOND FLOOR PLAN</b>	DRAWN BY	DATE:	2	07/27/11	SLS - T-PLY CONVERSION PROJECT
		OPTION			
OPTION DESCRIPTION		<p>NVR, Inc., owner, expressly reserves its copyright in these plans. These plans are not to be reproduced, changed, copied, or otherwise used in any way without the written consent of NVR, Inc.</p> <p><b>NVR</b> NVR, Inc. Architectural Services 100 5285 Westpark Drive Frederick, MD 21703</p>			
60		<p>C:\NVR\Solves\PALERMO_PALOO_03\DCI-CH-M220-996895\Sheets\01-Spec\01-A-8-PLN2_LS.dwg 10/28/19 3:46 pm</p>			



**KITCHEN CABINET  
PLAN-KC-2862**

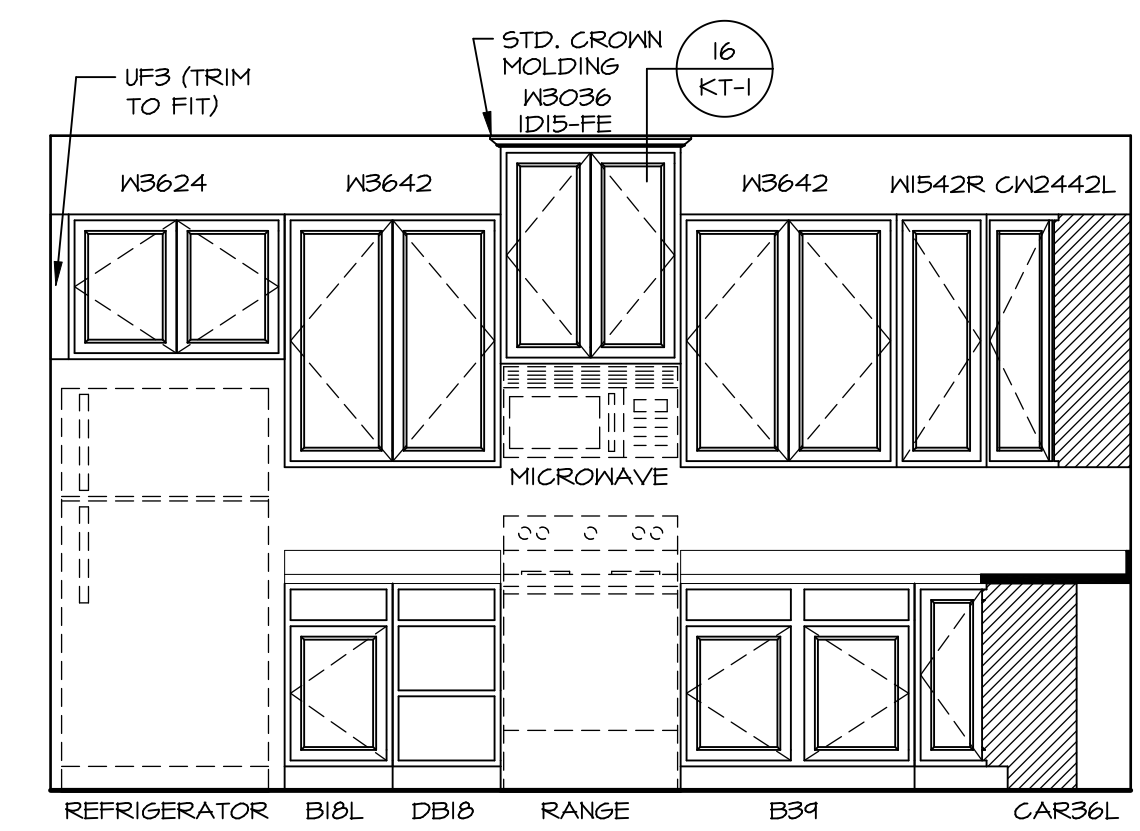
3  
A-12 SCALE: 3/8" = 1'-0" STANDARD KITCHEN MORNING ROOM

NOTE:  
1/2" DEPTH SHELF WITH  
FAIRFIELD OAK ONLY



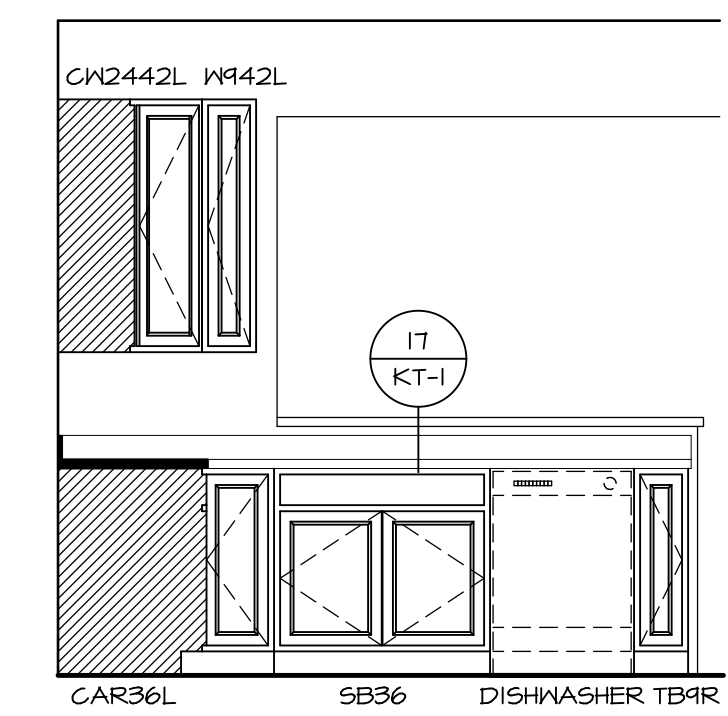
**KITCHEN COUNTERTOP  
PLAN-KT-2862**

4  
A-12 SCALE: 3/8" = 1'-0" STANDARD KITCHEN MORNING ROOM



**A KITCHEN ELEVATION**

SCALE: 3/8" = 1'-0"



**C KITCHEN ELEVATION**

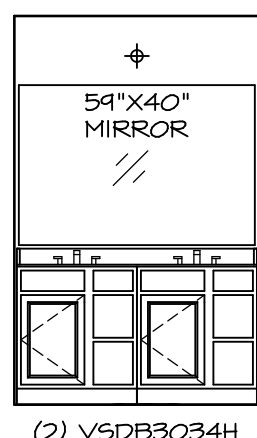
SCALE: 3/8" = 1'-0"

SHEET NO. <b>A-12</b>	MODEL <b>PALERMO</b>	SET NO. PALOO
	DRAWING TITLE	VERSION <b>03</b>
	OPTION DESCRIPTION	DRAWN BY
		DATE:
		OPTION

**NVR**  
Architectural Services  
5285 Westheimer, Suite 100  
Frederick, MD 21703

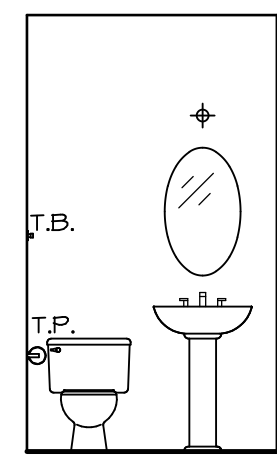
NVR, Inc., owner, expressly reserves its copyright in these plans. These plans are not to be reproduced, changed, copied in any way, or otherwise used, without the prior written consent of NVR, Inc.

REV. NO.	DATE	REMARKS

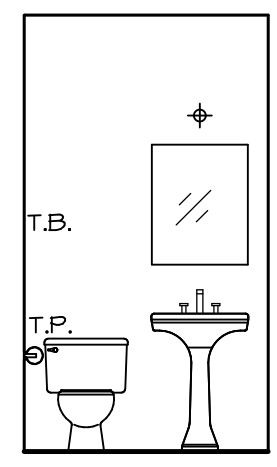


(2) V5DB3034H

**J** OWNER'S BATH  
SCALE: 1/4" = 1'-0"

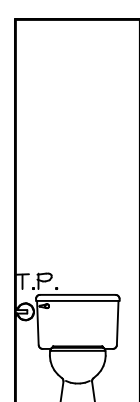


PEDESTAL SINK WITH OVAL MIRROR "5ZB"

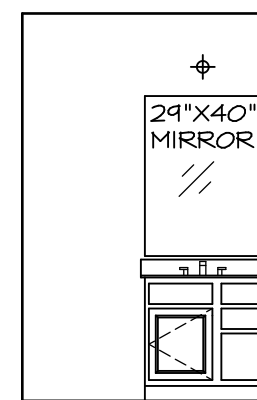


PEDESTAL SINK WITH SQUARE MIRROR "5ZC"

**B** POWDER ROOM  
SCALE: 1/4" = 1'-0"

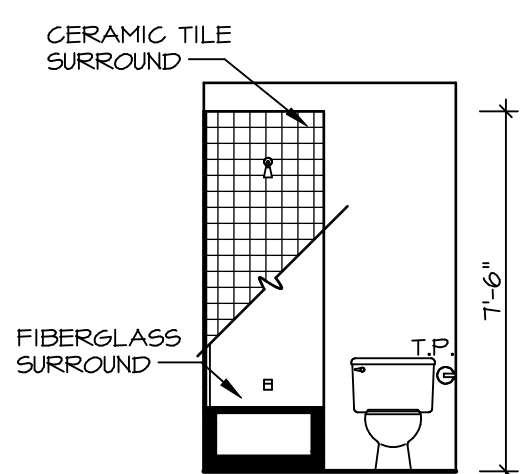


**H** OWNER'S BATH  
SCALE: 1/4" = 1'-0"

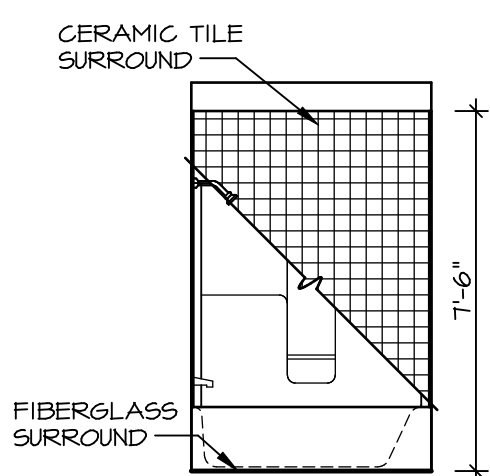


V5DB30

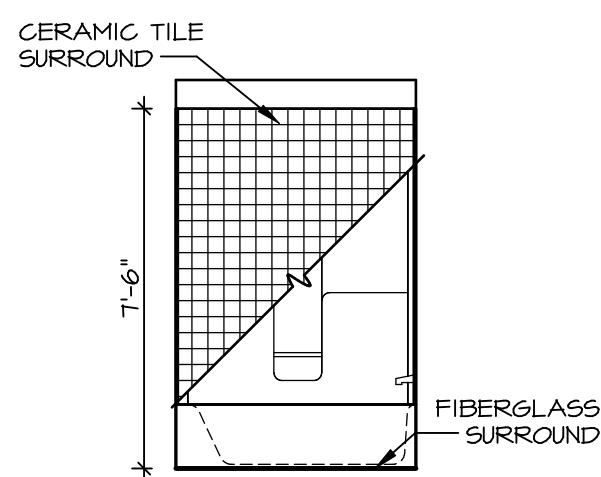
**E** BATH #1  
SCALE: 1/4" = 1'-0"



**G** BATH #1  
SCALE: 1/4" = 1'-0"



**K** OWNER'S BATH  
SCALE: 1/4" = 1'-0"



**F** BATH #1  
SCALE: 1/4" = 1'-0"

**NOTES:**

1. TEMPERED GLASS SHOWER ENCLOSURE WITH SWING DOOR OR OPTIONAL SLIDING DOOR BY DIVISION
2. TUB ACCESS PANELS PROVIDED AS NEEDED, ALL MATERIALS BY DIVISION
3. REFER TO SHEET IT-2 FOR TUB AND SHOWER DETAILS.
4. ALL V5DB24-42 DRAWERS TO BE SET ON RIGHT HAND.
5. BATH ELEVATIONS ARE SHOWN PER PLAN.

SHEET NO.	<b>A-13</b>
MODEL	<b>PALERMO</b>
SET NO.	<b>PALOO 03</b>
VERSION	<b>03</b>
DRAWING TITLE	<b>BATH ELEVATIONS</b>
DRAWN BY	
DATE:	
OPTION	
OPTION DESCRIPTION	
TITLE	<b>72</b>

**NVR**  
Architectural Services  
Architects  
5285 Westover Lane, Suite 100  
Frederick, MD 21703

REV. NO.	DATE	REMARKS
1	08/04/16	TM - DRAWING ALIGNMENT