

LEGEND

- BEARING WALL
- - - NON BEARING WALL
- ⊗ INDICATES BEARING FROM POINT-LOAD ABOVE
- J JACKS
- B BEAM/HEADER
- F PAD FOOTING
- C STEEL COLUMN
- X PORTAL FRAME
- X JOIST/TRUSS
- L LVL
- X ENGINEERING PAGE NUMBER

SEE FC DETAILS FOR FRAMING CONNECTORS

- FOUNDATION NOTES - BASEMENT**
- FOUNDATION UNDER HABITABLE SPACE: CONCRETE SLAB ON 6 MIL VAPOR BARRIER OVER SUB-BASE (SEE SPEC SHEET FOR SLAB NOTES)
 - SLAB UNDER GARAGE: UNEXCAVATED WITH CONCRETE SLAB ON VAPOR BARRIER OVER SUB-BASE (SEE SPEC SHEET FOR SLAB NOTES)
 - SEE SHEET (A-4) FOR FOUNDATION CONNECTION INFORMATION.
 - OPTIONAL EGRESS WINDOW - LOCATION MAY VARY DUE TO GRADE OR OPTIONS ABOVE WINDOW WELL REQUIRED W/ CERTAIN GRADE CONDITIONS (SEE SPEC SHEET FOR ADDITIONAL INFO)
 - SLAB LEDGE LOCATIONS VARY W/ GRADE BEAM(S) ORIENTATION. SEE GB-1 FOR DETAILS.

FOUNDATION DIAGONALS

A		B	
A	0"	A	52'-5 5/8"
B	52'-5 5/8"	B	0"
C	35'-0"	C	66'-10 1/8"
D	65'-0"	D	46'-0"
E	21'-10 1/16"	E	31'-0 3/16"
F	32'-9 1/16"	F	20'-0"
G	59'-6 9/16"	G	53'-7 3/16"
H	44'-7 7/8"	H	60'-6 1/2"

PAD FOOTING SCHEDULE

IDENTIFIER	LENGTH	WIDTH	HEIGHT	OPTIONS	ENG. NUM.
FO04	3'-6"	3'-6"	1'-6"		B0034
FO05	2'-9"	2'-4"	1'-3"		B0034
FO01	4'-4"	4'-4"	1'-4"	BAR, MAA	B0025
FO11	3'-6"	3'-6"	1'-6"		1052

FOUNDATION BEAM/HEADER SCHEDULE

IDENTIFIER	DESCRIPTION	LENGTH	OPTIONS	ENG. NUM.	REMARKS
B001	BEAM STEEL - W8X13	24'-6 1/2"		B0031	
B004	BEAM STEEL - W8X10	30'-4"	MAA, BAR	B0025	

STEEL COLUMN SCHEDULE

IDENTIFIER	STYLE	HEIGHT	OPTIONS	ENG. NUM.	REMARKS
C001	STANCHION - 3 IN SCHED 40	7'-5 1/2"		B0034	
C002	STANCHION - 4 IN DIA 11GA ADJ	7'-5 1/2"		B0034	
C003	STANCHION - 3.5 IN SCHED 40	7'-5 3/8"	MAA, BAR	B0034	

REMARKS

REV. NO.	DATE	DESCRIPTION

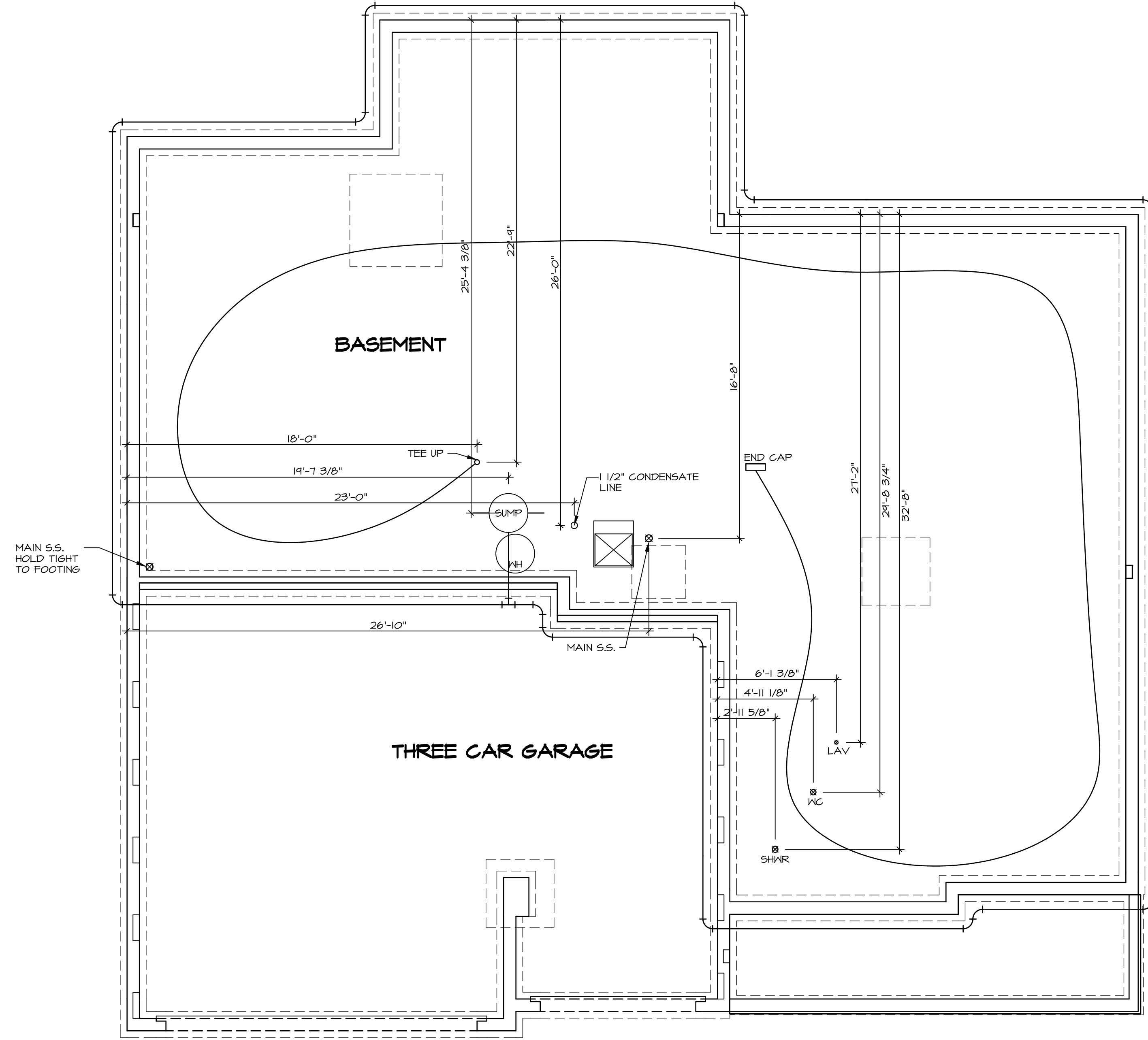
SET NO. LDN00
 VERSION 02
 DRAWN BY PTH
 DATE: 8/14/15
 OPTION

NVR
 NVR, Inc.
 Architectural Services
 Architects & Engineers
 5285 Washington Blvd, Suite 100
 Frederick, MD 21703

MODEL: LANDON
 DRAWING TITLE: FOUNDATION PLAN
 OPTION DESCRIPTION:

SHEET NO. **A-3**
 19

C:\NVR\Solves\LANDON_LDNO0_02\DCI-CH-WZ22\B0606A\Sheets\Lot_Specific\19_A-3_FD_LS (FBA).dwg 05/30/18 - 3:25 am



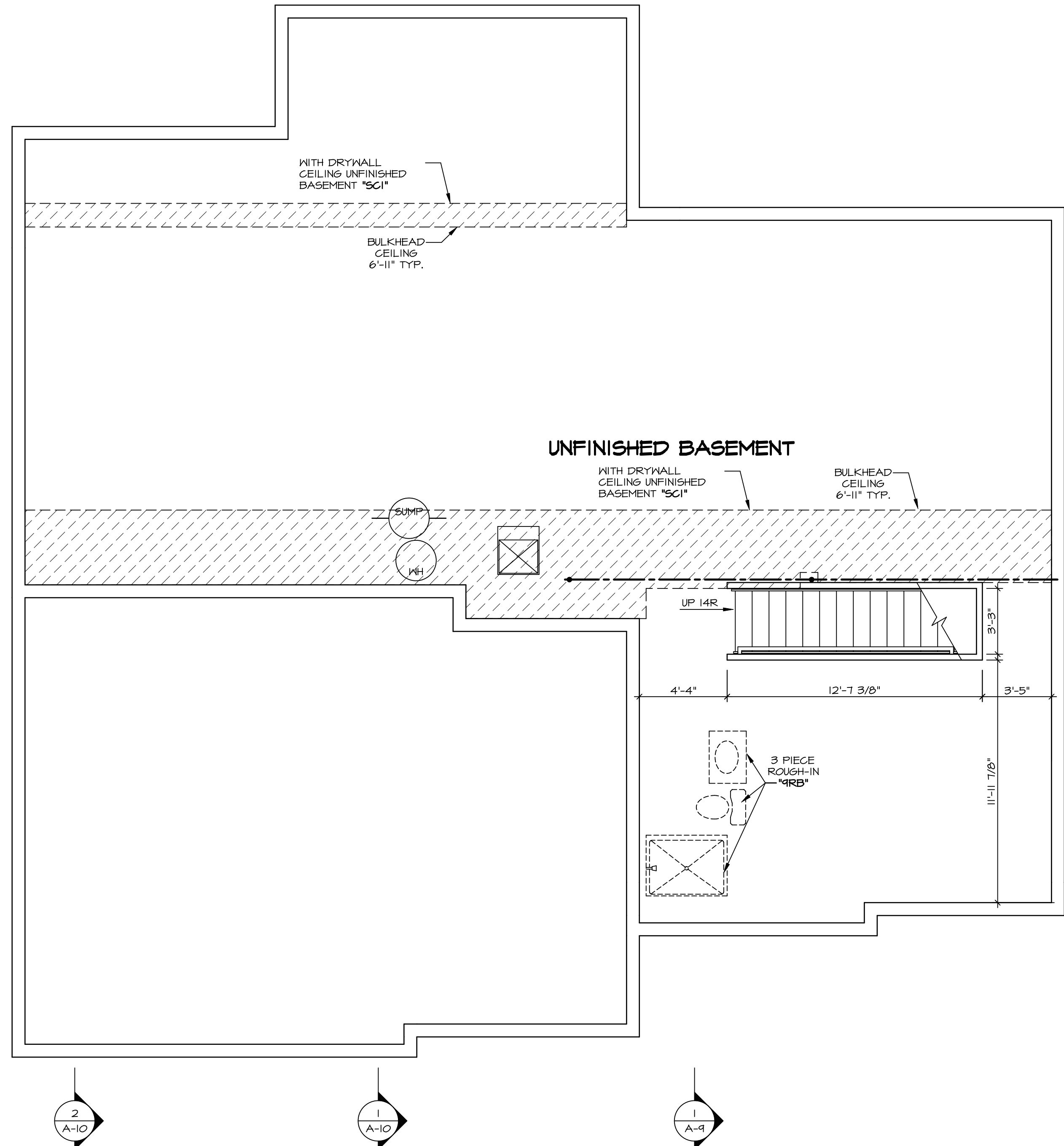
1
A-5 PLUMBING PLAN
SCALE: 1/4" = 1'-0"

SHEET NO. A-5	MODEL LONDON	SET NO. LDN00	REMARKS
	DRAWING TITLE PLUMBING PLAN	VERSION 02	
OPTION DESCRIPTION 33	OPTION	DATE: 8/13/15	<p>NVR, Inc., owner, expressly disclaims any copyright interest in the drawings, specifications, or other documents prepared by NVR, Inc. for the project. These drawings are not to be reproduced, changed, copied, or otherwise used without the written consent of NVR, Inc.</p>
		DRAWN BY PTH	
<p>NVR Architectural Services 5285 Westpark Drive, Suite 100 Frederick, MD 21703</p>		<p>DATE: 8/13/15</p>	<p>REV. NO. DATE</p>
<p>C:\NVR\Solves\LONDON_LDNO0_02\DCI-CH-MZZA\80806A\Sheets\Lot_Specific\35_A-5_PLUMB_LS.dwg 05/30/18 - 3:26 am</p>			

LEGEND	
	BEARING WALL
	NON BEARING WALL
	INDICATES BEARING FROM POINT-LOAD ABOVE
	JACKS
	BEAM/HEADER
	PAD FOOTING
	STEEL COLUMN
	PORTAL FRAME
	JOIST/TRUSS
	LVL
	ENGINEERING PAGE NUMBER
SEE FC DETAILS FOR FRAMING CONNECTORS	

- FLOOR PLAN NOTES**
- ALL HEADERS ARE (2) 2x6 w/ 2x4 WALLS OR (3) 2x6 w/ 2x6 WALLS, UNLESS OTHERWISE NOTED.
 - ALL HEADERS TO HAVE (1) 2x4 OR 2x6 JACK EACH END, UNLESS OTHERWISE NOTED.
 - ALL EXTERIOR WALLS TO BE 4" AND ALL INTERIOR WALLS TO BE 3 1/2", UNLESS OTHERWISE NOTED.
 - HATCHED AREAS INDICATE DROPPED CEILINGS. ALL DROPPED CEILINGS ARE 12" UNLESS OTHERWISE NOTED.
 - SEE 'BRACED WALL PANEL DETAIL SHEET' FOR SPECIAL WALL FRAMING LOCATIONS AND HEADER SIZES, IF APPLICABLE.
 - SEE STANDARD DETAIL CATEGORY 'IT' SHEET(S) FOR INTERIOR TRIM DETAILS.
 - SEE ARCHITECTURAL DETAIL SHEET 'AD' FOR HOUSE SPECIFIC INTERIOR TRIM OPTION TABLE.
 - ALL WINDOWS HAVE '1'-0 1/2" HEADER HEIGHT UNLESS OTHERWISE NOTED.

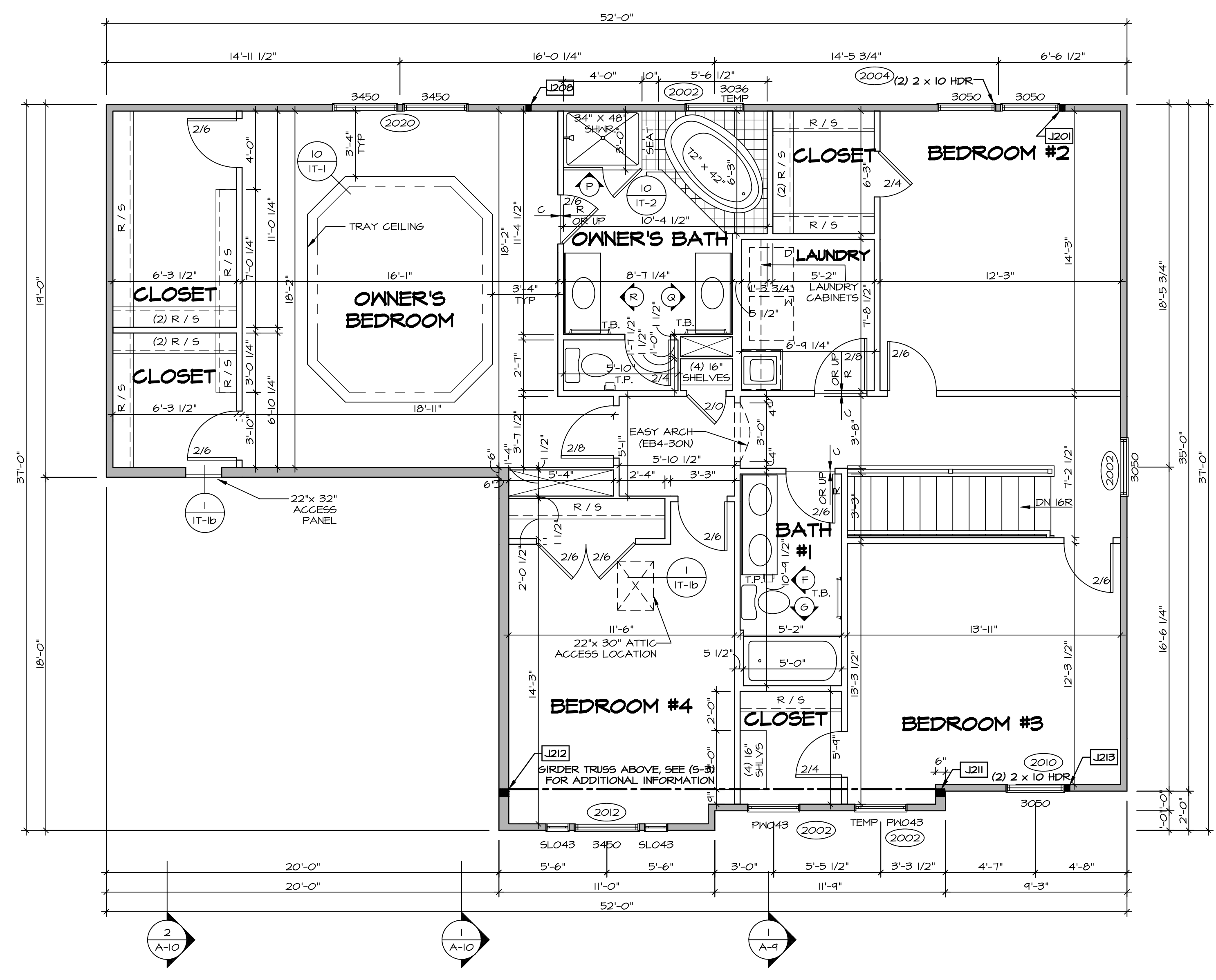
- GYPSUM NOTES**
- AT GARAGE:
GYPSUM BOARD AT COMMON WALLS, CEILINGS, BEAM WRAPS AND SUPPORTS PER STANDARD DETAIL FA-1(b) FIRE ASSEMBLIES OR AS REQUIRED BY LOCAL CODE.
- AT STAIRS:
1/2" GYPSUM BOARD AT UNDERSIDE OF STAIRS AND WALLS IN CLOSET
- BASEMENT WITH I-JOIST FLOOR SYSTEM ABOVE:
WITH OPTION "SGI" - DRYWALL UNFINISHED BASEMENT CEILING AREA
- NOTES:**
- 1/2" GYPSUM WALL BOARD REQUIRED ON CEILING IN UNFINISHED AREAS WHEN NO SPRINKLER SYSTEM IS INSTALLED.
 - A MAXIMUM AREA OF 80 SQ FT MAY BE OMITTED AS NEEDED FOR INSTALLATION OF PLUMBING, ELECTRICAL, AND/OR HVAC (TYPICALLY AN 8'-0"x8'-0" CEILING SPACE ABOVE MECHANICAL AREA).
 - PROVIDE FIRE BLOCKING AS REQUIRED AT PERIMETER OF ANY AREAS WHERE DRYWALL HAS BEEN OMITTED.



BASEMENT FLOOR PLAN
SCALE: 1/4" = 1'-0"

SHEET NO.	MODEL	SET NO.	VERSION	DRAWN BY	DATE	OPTION	REMARKS
A-6	LONDON	LDN00	02	HD	8/13/15		
37							

NVR
Architectural Services
5285 West... Suite 100
Frederick, MD 21703



SECOND FLOOR PLAN
SCALE: 1/4" = 1'-0"

LEGEND

- BEARING WALL
- NON BEARING WALL
- INDICATES BEARING FROM POINT-LOAD ABOVE
- JACKS
- BEAM/HEADER
- PAD FOOTING
- STEEL COLUMN
- PORTAL FRAME
- JOIST/TRUSS
- LVL
- ENGINEERING PAGE NUMBER

SEE FC DETAILS FOR FRAMING CONNECTORS

- FLOOR PLAN NOTES**
- ALL HEADERS ARE (2) 2x6 w/ 2x4 WALLS OR (3) 2x6 w/ 2x6 WALLS, UNLESS OTHERWISE NOTED.
 - ALL HEADERS TO HAVE (1) 2x4 OR 2x6 JACK EACH END, UNLESS OTHERWISE NOTED.
 - ALL EXTERIOR WALLS TO BE 4" AND ALL INTERIOR WALLS TO BE 3 1/2", UNLESS OTHERWISE NOTED.
 - HATCHED AREAS INDICATE DROPPED CEILINGS. ALL DROPPED CEILINGS ARE 12" UNLESS OTHERWISE NOTED.
 - SEE "BRACED WALL PANEL DETAIL SHEET" FOR SPECIAL WALL FRAMING LOCATIONS AND HEADER SIZES, IF APPLICABLE.
 - SEE STANDARD DETAIL CATEGORY "IT" SHEET(S) FOR INTERIOR TRIM DETAILS.
 - SEE ARCHITECTURAL DETAIL SHEET "AD" FOR HOUSE SPECIFIC INTERIOR TRIM OPTION TABLE.
 - ALL WINDOWS HAVE 7'-0 1/2" HEADER HEIGHT UNLESS OTHERWISE NOTED.

- GYPSUM NOTES**
- AT GARAGE:**
GYPSUM BOARD AT COMMON WALLS, CEILINGS, BEAM WRAPS AND SUPPORTS PER STANDARD DETAIL FA-1(b) FIRE ASSEMBLIES OR AS REQUIRED BY LOCAL CODE.
- AT STAIRS:**
1/2" GYPSUM BOARD AT UNDERSIDE OF STAIRS AND WALLS IN CLOSET

SECOND FLOOR JACK SCHEDULE

IDENTIFIER	DESCRIPTION	OPTIONS	ENG. NUM.	REMARKS
J201	JACK - (2) 2X4 SFF STUD GRADE	ELC, ELL	2001a	
J202	JACK - (2) 2X4 SFF STUD GRADE	ELC, ELL, MAA	2000	
J211	JACK - (3) 2X6 SFF STUD GRADE	ELC	2000	EXTEND TO THRU. TOP PLATE
J212	JACK - (3) 2X6 SFF STUD GRADE	ELC	2000	EXTEND TO THRU. TOP PLATE
J213	JACK - (2) 2X4 SFF STUD GRADE	ELC	2010	

REMARKS

REV. NO.	DATE	DESCRIPTION

MODEL
L-ANDON

DRAWING TITLE
SECOND FLOOR PLAN

OPTION DESCRIPTION

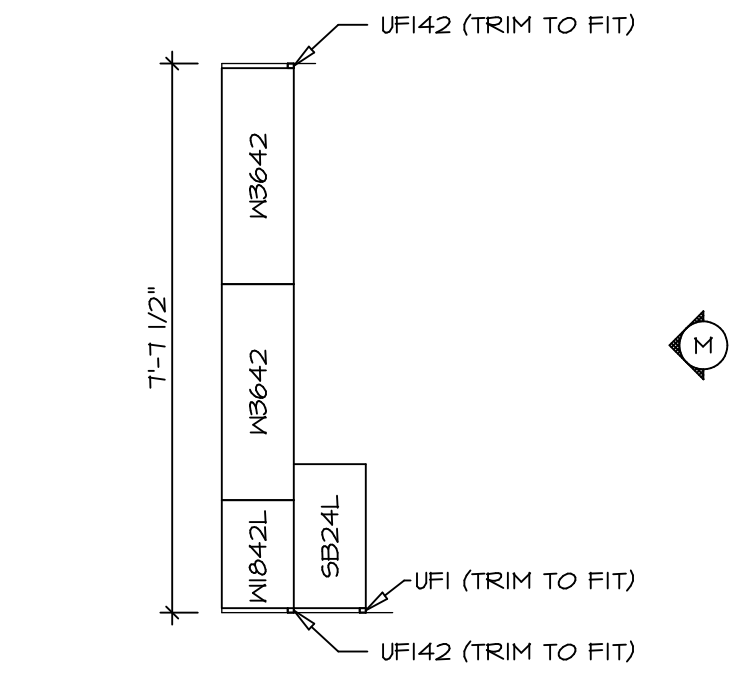
SHEET NO.
A-8

41

NVR
NVR, Inc.
Architectural Services
5285 Washington Blvd
Frederick, MD 21703

SET NO. LDN00
VERSION 02
DRAWN BY SDTT
DATE: 7/3/15
OPTION

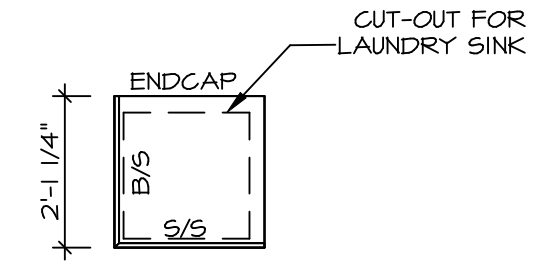
C:\NVR\Solves\LANDON_LDNO0_02\DCI-CH-M22A\B0806A\Sheets\Lot_Specific\41_A-B_FLN2_LS.dwg_05/30/18 - 3:26 am



CABINET PLAN
KC - 2964

SCALE: 3/8" = 1'-0"

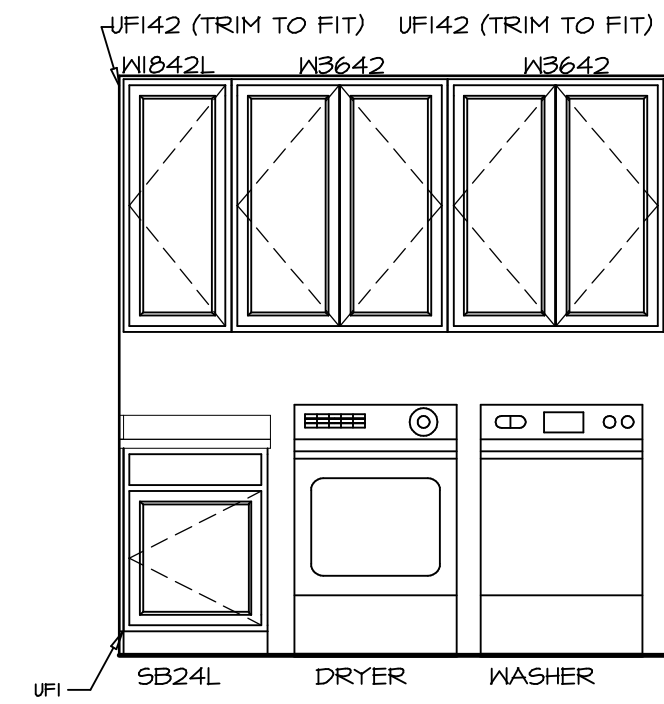
1
A-12b



COUNTERTOP PLAN
KC - 2964

SCALE: 3/8" = 1'-0"

2
A-12b



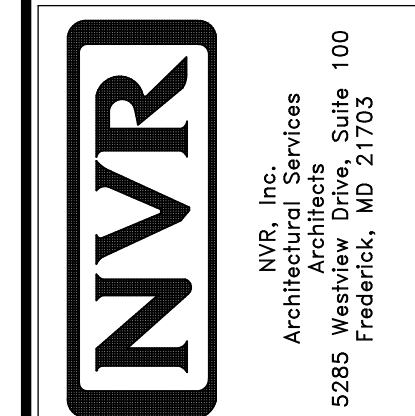
ELEVATION "M"

SCALE: 3/8" = 1'-0"

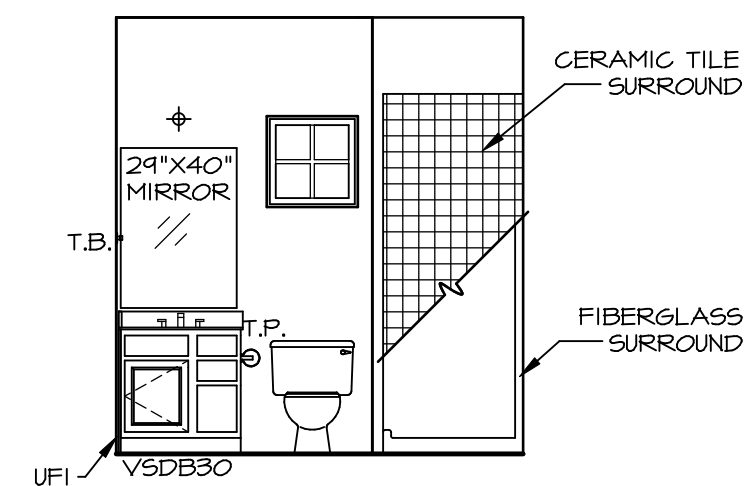
M

SHEET NO. A-12b	MODEL LONDON	SET NO. LDN00	REVISIONS	REMARKS
	DRAWING TITLE KITCHEN PLAN - ADDITIONAL CABINETS	VERSION 02	DATE: 8/6/15	
OPTION DESCRIPTION		DRAWN BY: SDTT		
52		DATE: 8/6/15		
		OPTION		

NVR, Inc., owner, expressly reserves its copyright in these plans. These plans are not to be reproduced, changed, copied, or used in any way without the written consent of NVR, Inc.

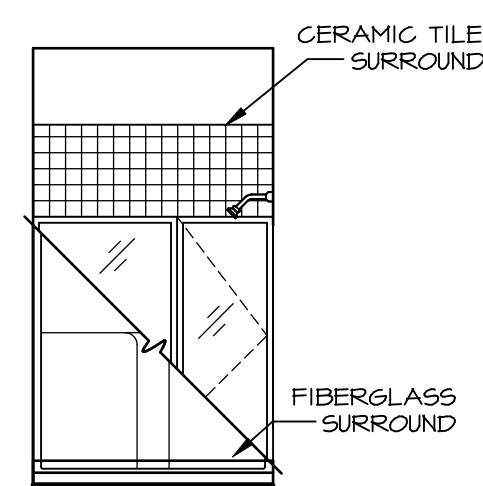


C:\NVR\Solves\LONDON_LDNO0_02\DCI-CH-MZZA\80806A\Sheets\Lot_Specific\52_A-12b_KIT_LS.dwg 05/30/18 - 3:28 am

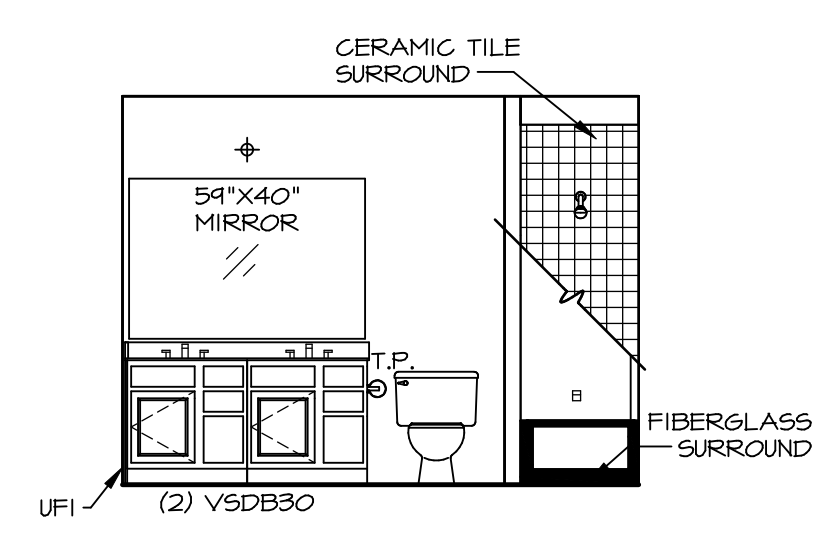


D FIRST FLOOR BATH
SCALE: 1/4" = 1'-0"

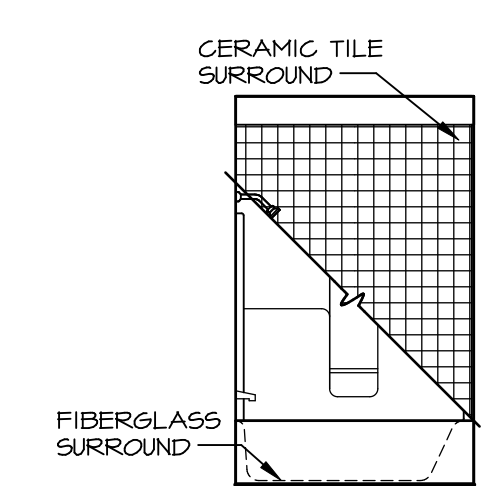
- NOTES:**
- TEMPERED GLASS SHOWER ENCLOSURE WITH SWING DOOR OR OPTIONAL SLIDING DOOR BY DIVISION
 - TUB ACCESS PANELS PROVIDED AS NEEDED, ALL MATERIALS BY DIVISION
 - REFER TO SHEET IT-2 FOR TUB AND SHOWER DETAILS.
 - ALL V5DB24-42 DRAWERS TO BE SET ON RIGHT HAND.
 - BATH ELEVATIONS ARE SHOWN PER PLAN.



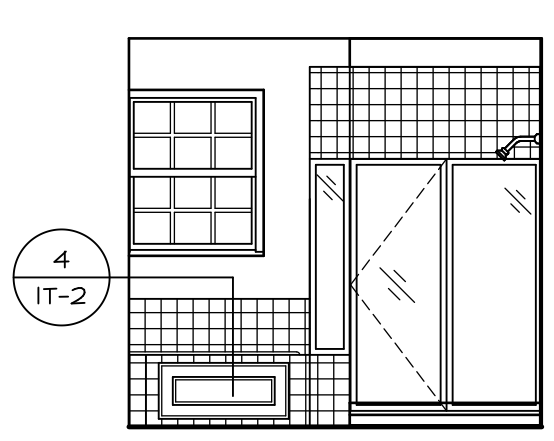
E FIRST FLOOR BATH
SCALE: 1/4" = 1'-0"



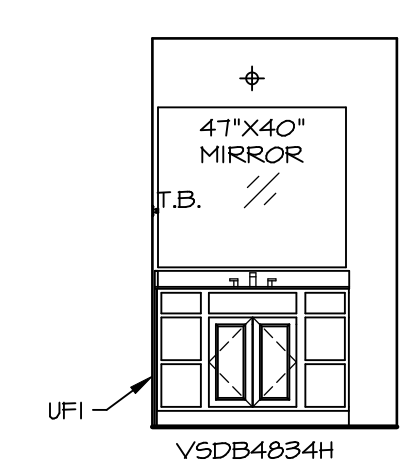
F BATH #1
SCALE: 1/4" = 1'-0"



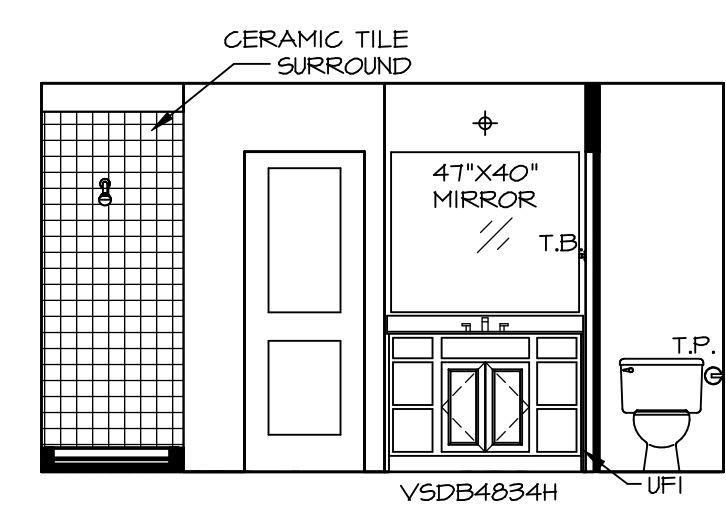
G BATH #1
SCALE: 1/4" = 1'-0"



P OWNER'S BATH
SCALE: 1/4" = 1'-0"



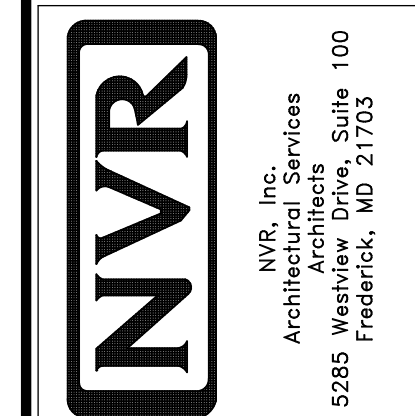
Q OWNER'S BATH
SCALE: 1/4" = 1'-0" OWNER'S BATH ALTERNATE LAYOUT "AMP"

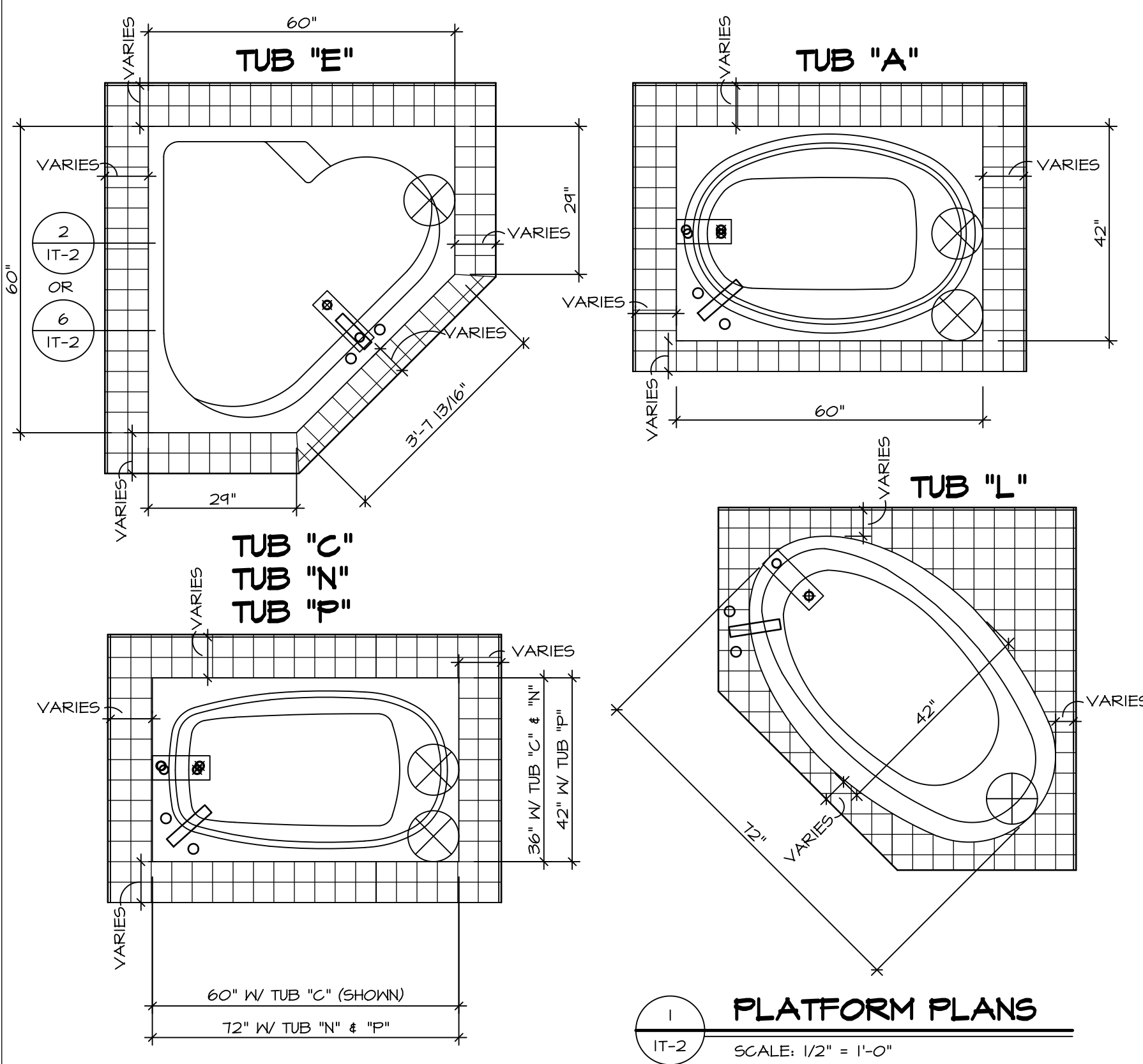


R OWNER'S BATH
SCALE: 1/4" = 1'-0"

SHEET NO.	MODEL	SET NO.	VERSION	DRAWN BY	DATE	OPTION	REMARKS
A-13	LONDON DRAWING TITLE BATH ELEVATIONS	LDN00	02	SDTT	7/30/15		
55							

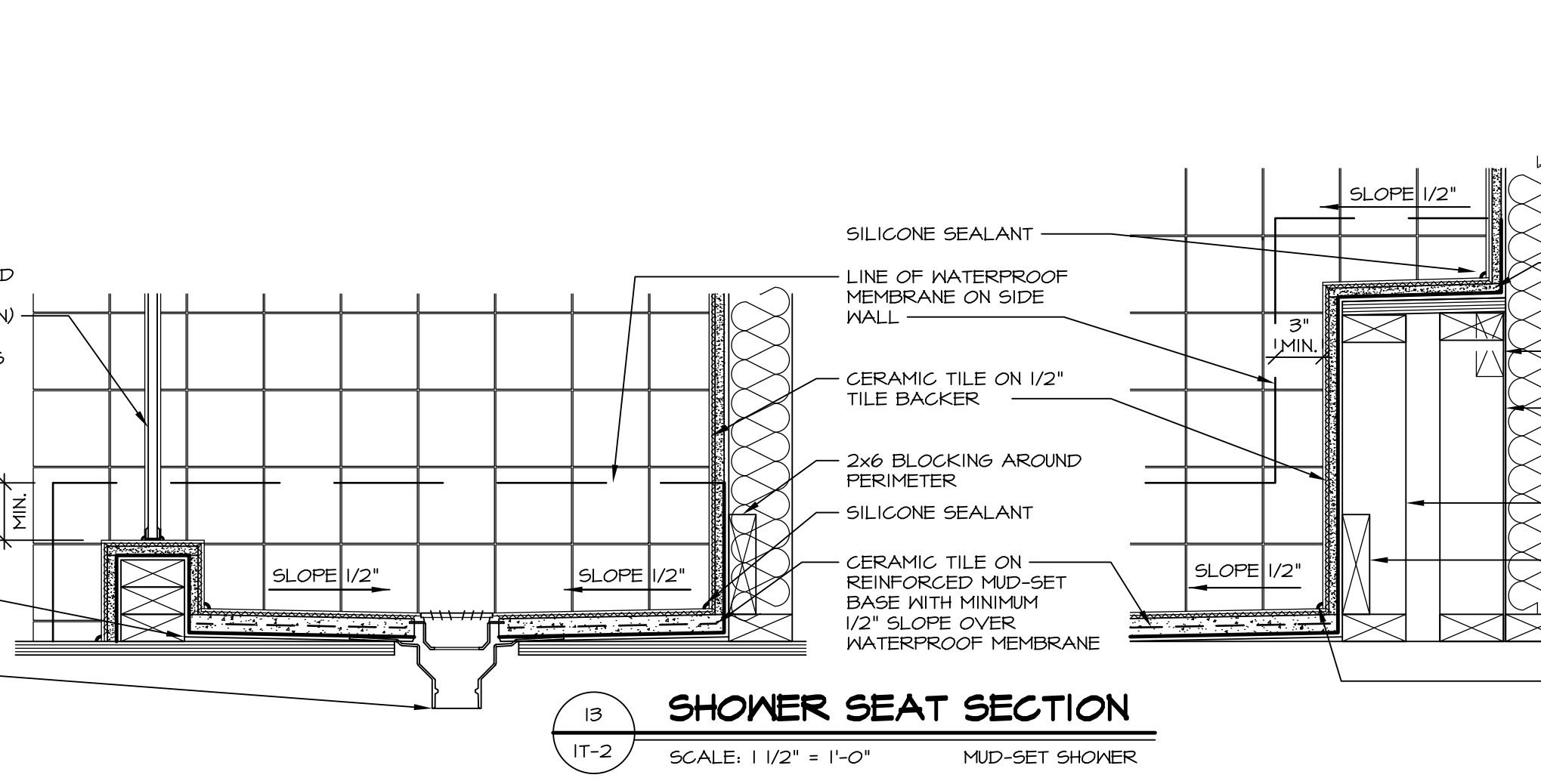
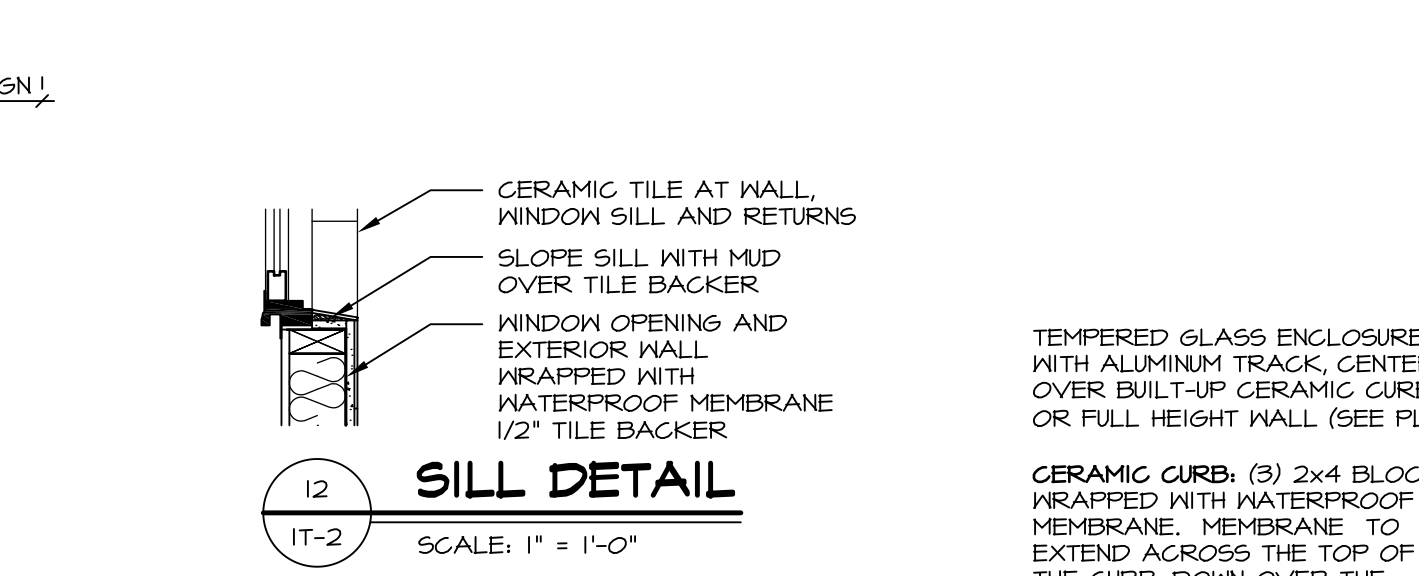
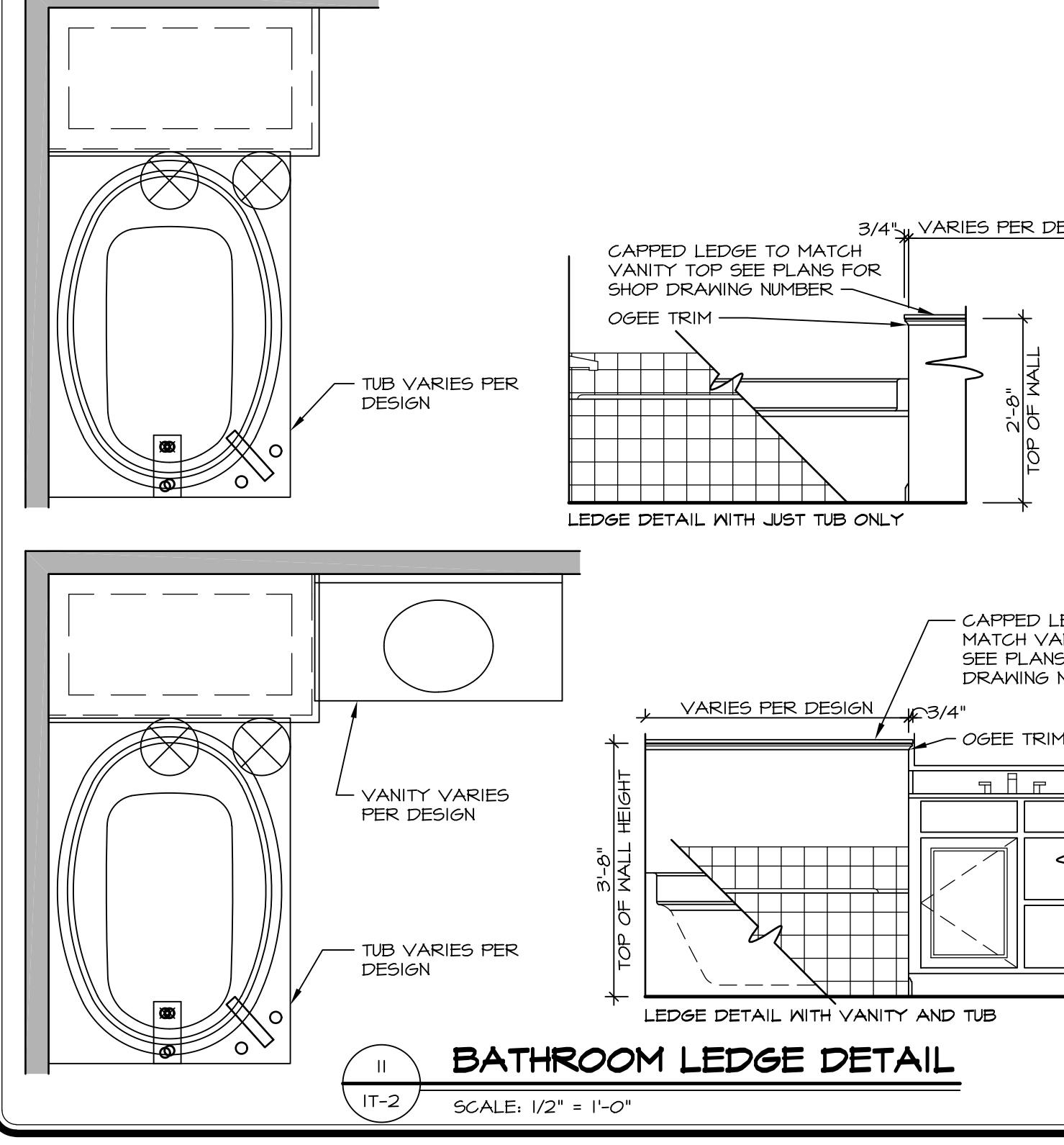
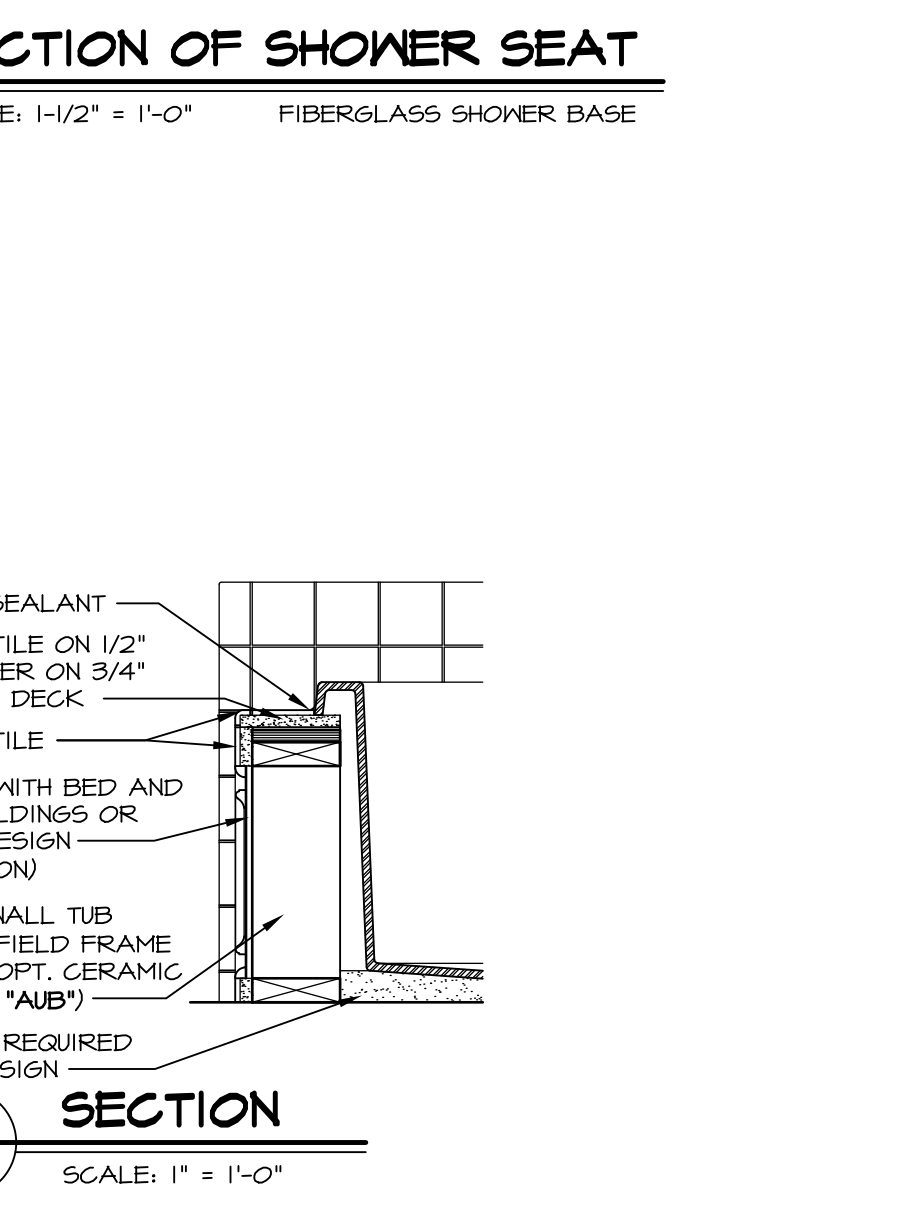
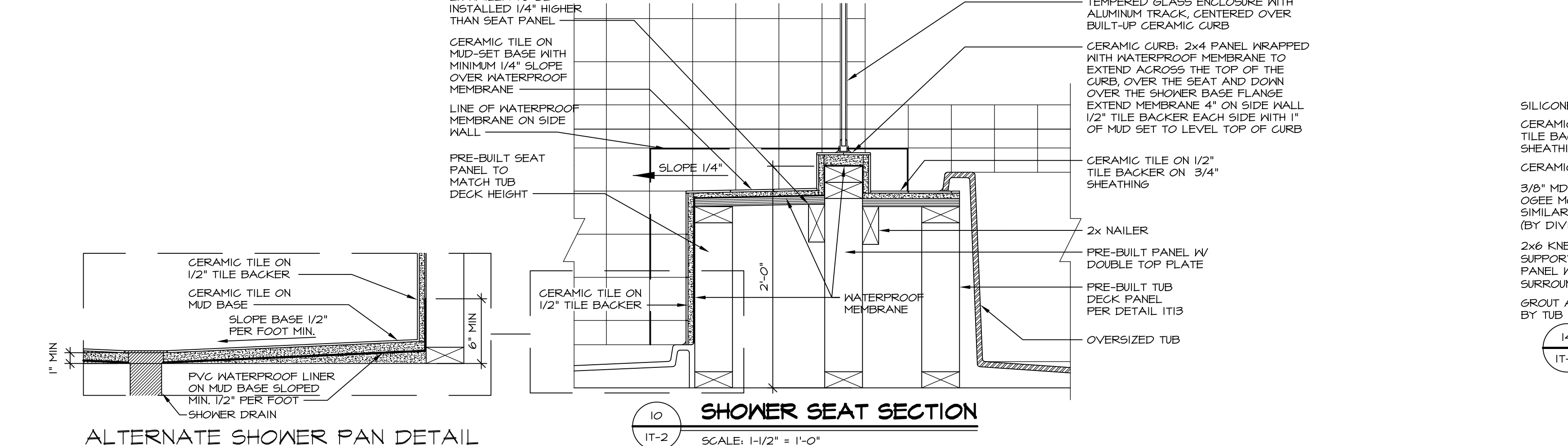
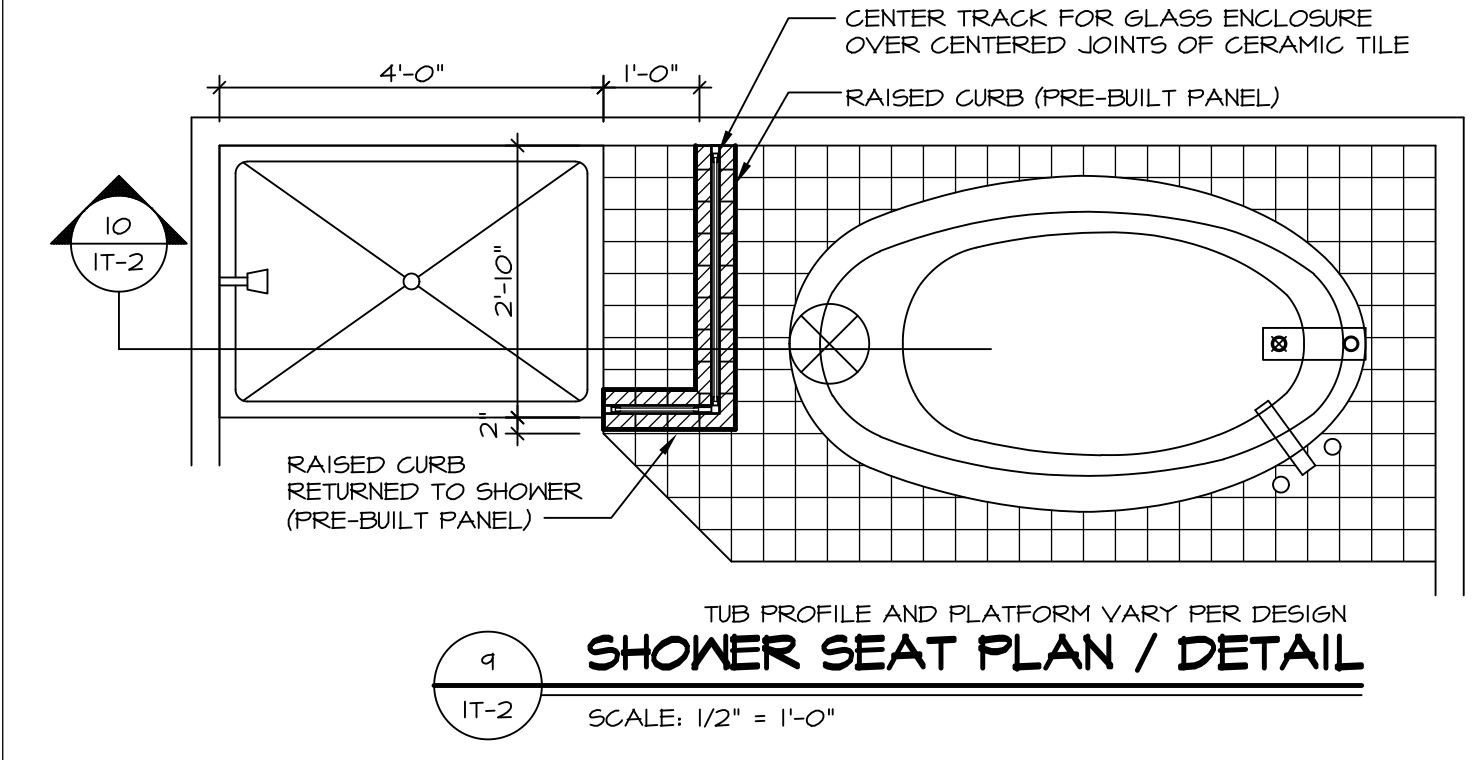
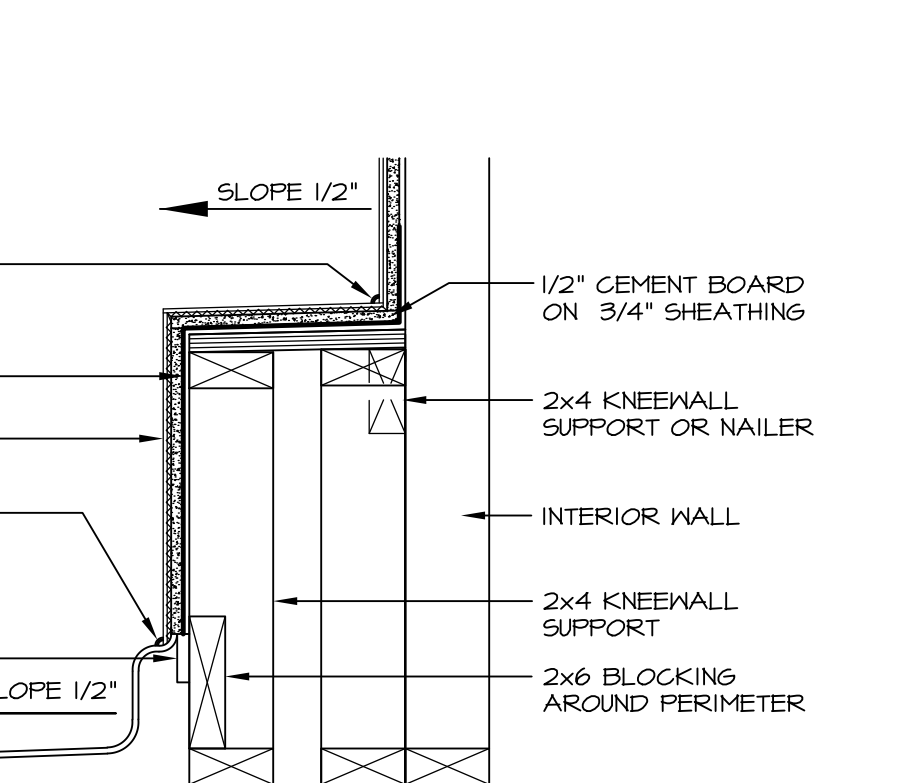
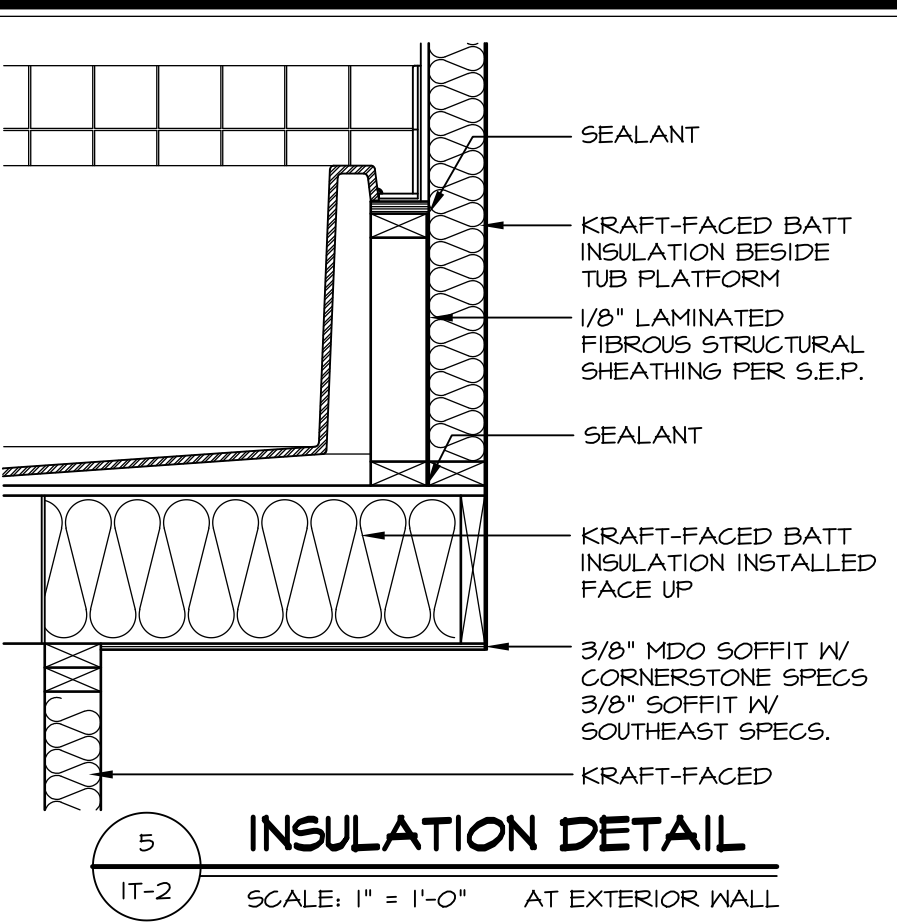
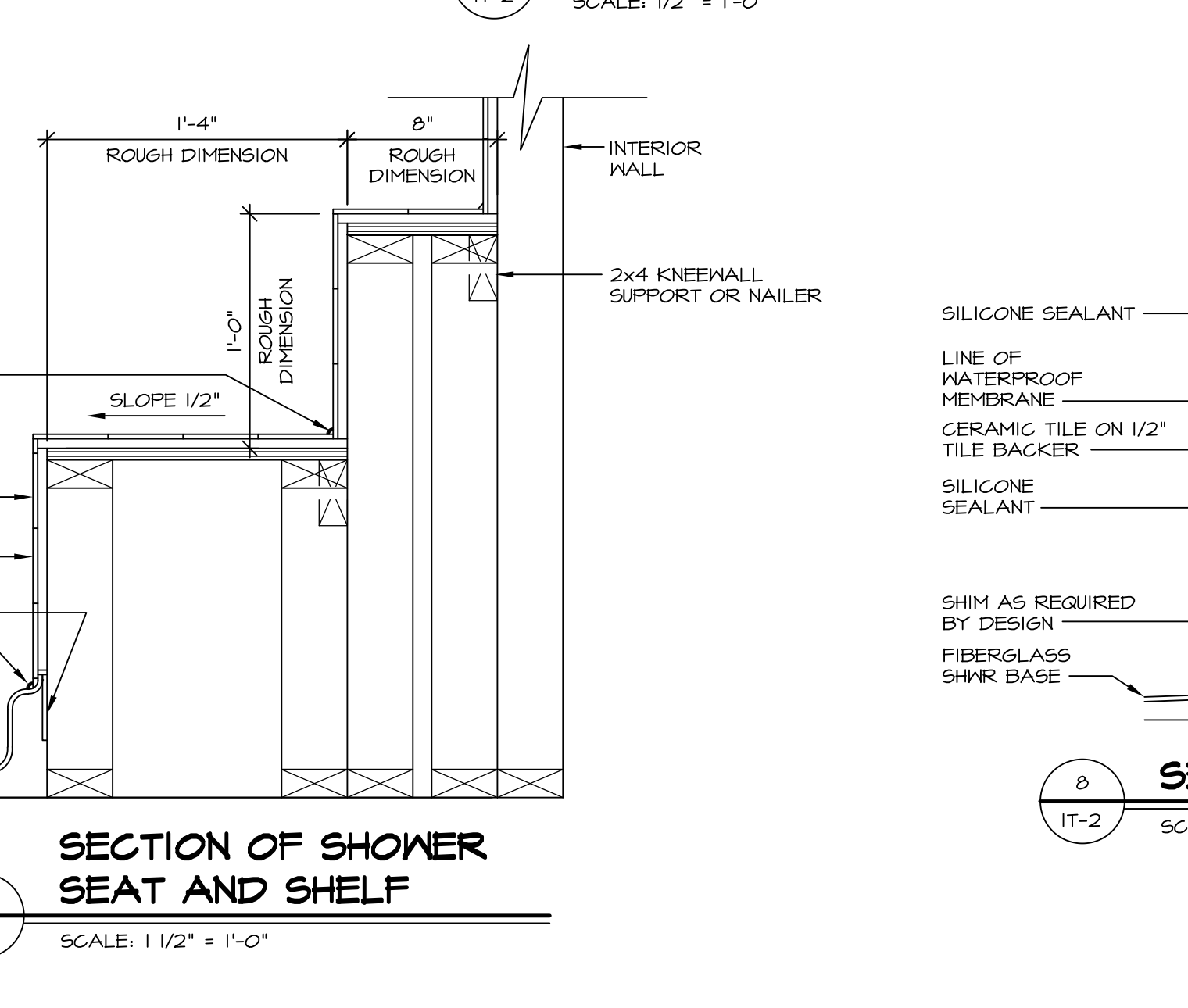
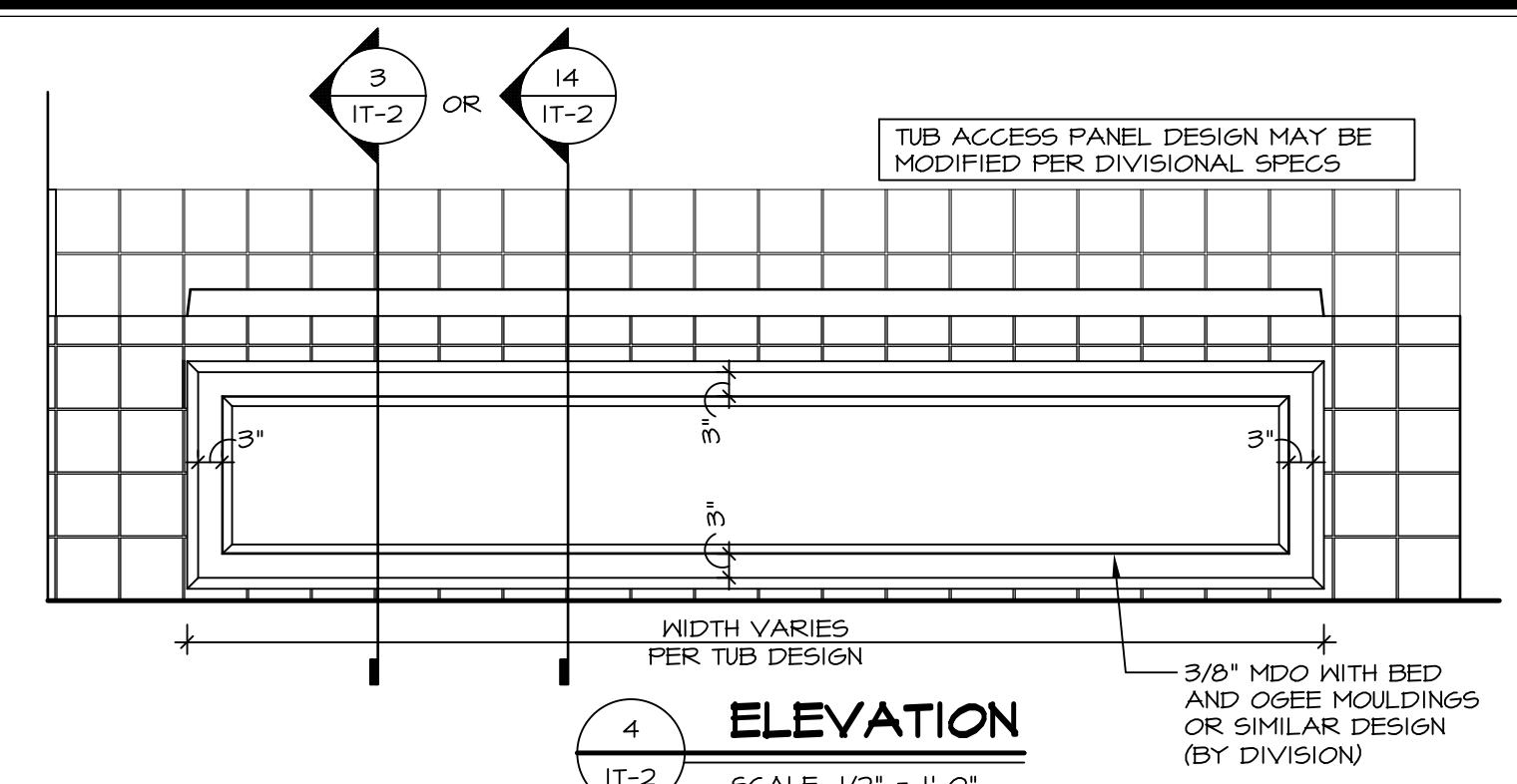
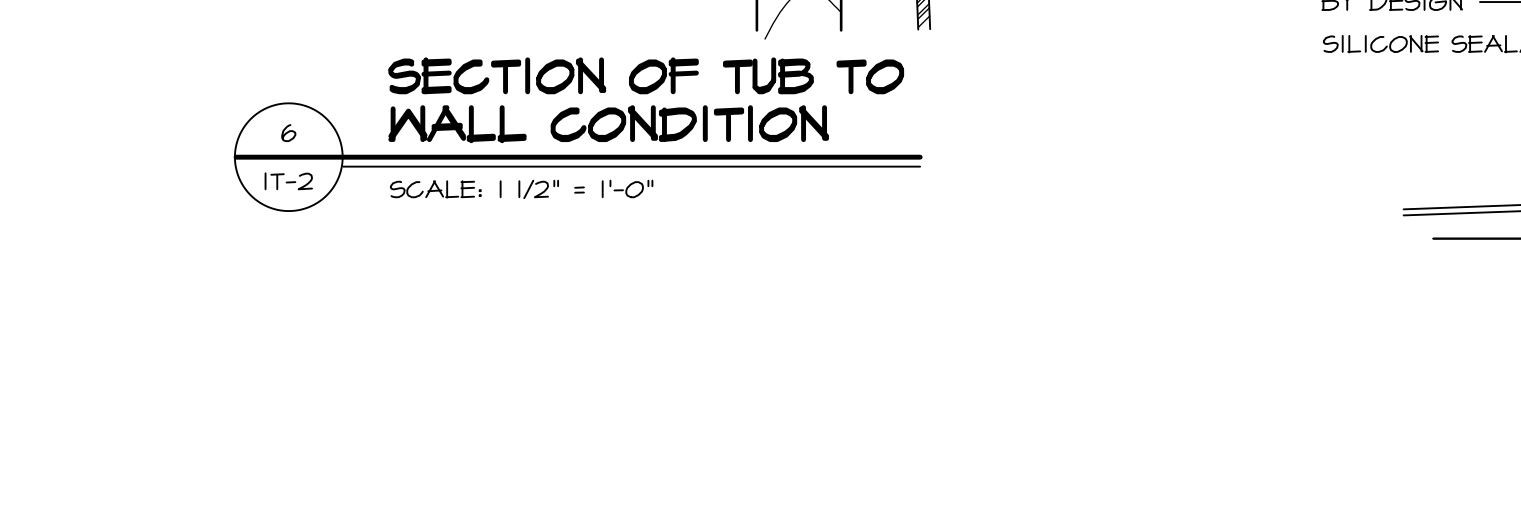
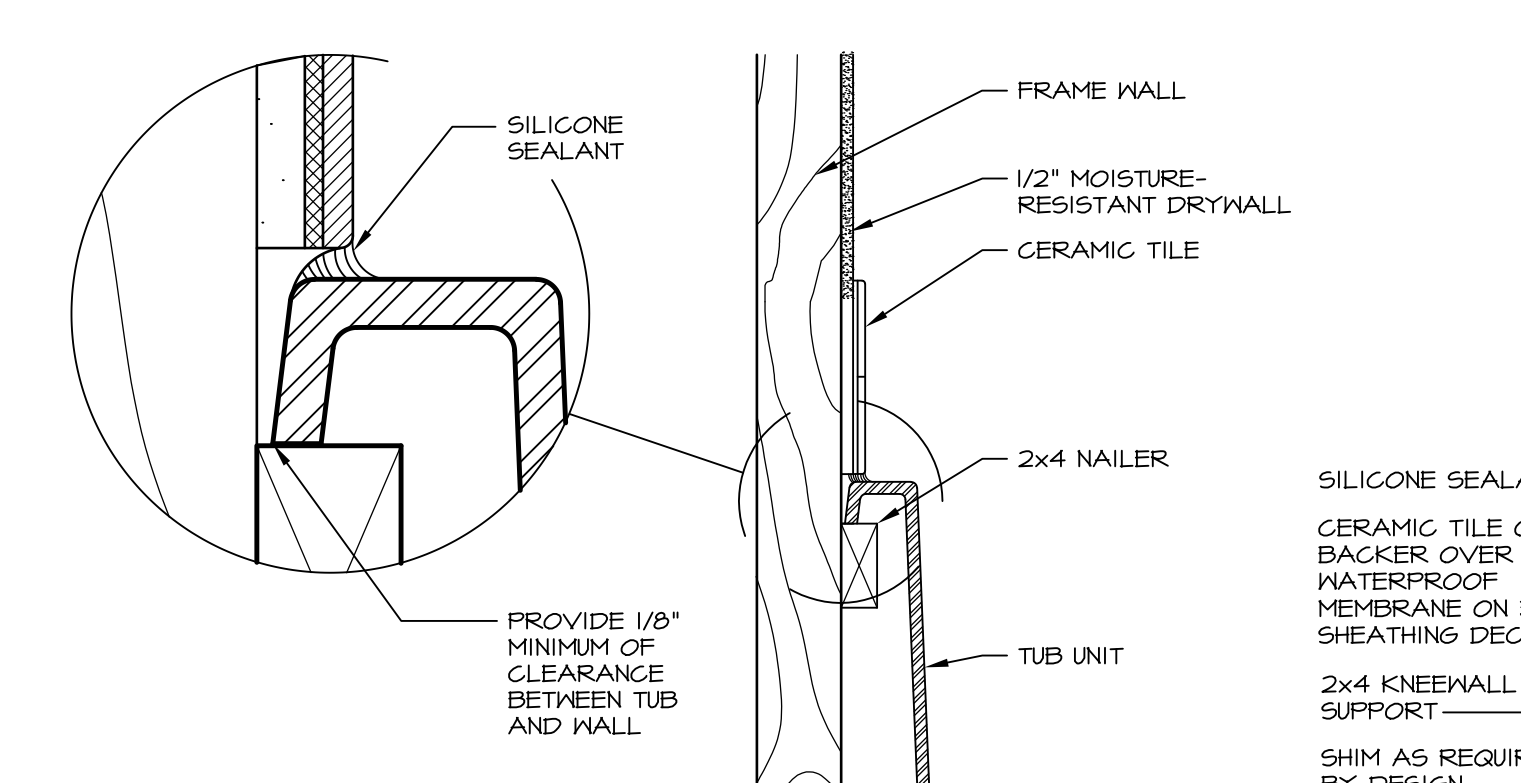
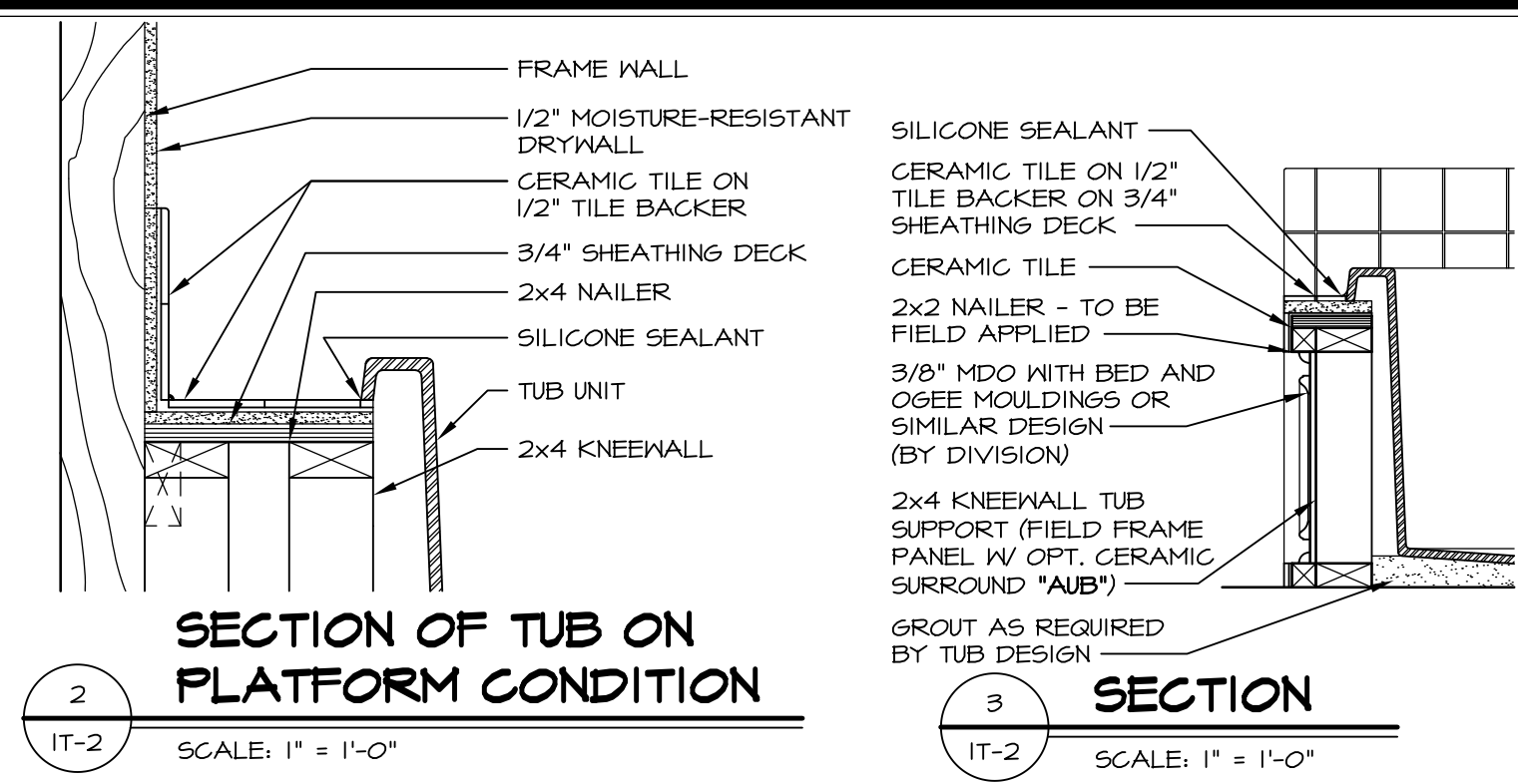
NVR, Inc., owner, expressly reserves its copyright in these plans. These plans are not to be reproduced, changed, copied, or otherwise used in any way without the prior written consent of NVR, Inc.





1 PLATFORM PLANS
SCALE: 1/2" = 1'-0"

TUB	MANUF.	HEIGHT	WIDTH	LENGTH	TUB DECK PANEL HEIGHT
"A"	KOHLER/STERLING	18 3/4"	42"	60"	17 1/8"
"C"	KOHLER/STERLING	18 3/4"	36"	60"	17 1/8"
"E"	KOHLER/STERLING	19 1/2"	60"	60"	17 7/8"
"L"	KOHLER/STERLING	18 1/2"	42"	72"	16 7/8"
"N"	KOHLER/STERLING	18 3/4"	36"	72"	17 1/8"
"P"	KOHLER/STERLING	18 3/4"	42"	72"	17 1/8"



REVISIONS

REV. NO.	DATE	DESCRIPTION
1	5/11/17	EBP - REVISED DETAIL 1 AND 11 TO REMOVE TUB ACCESS PANEL REF. (095 #15 541/4)
2	9/21/17	EBP - REVISED T-FLY NOTE TO CALL OUT LFS
3	9/21/17	EBP - REVISED NOTE ON DETAIL #1 - REVISED ORDER OF MATERIAL PARA#493/4

SET NO. NVR
VERSION
DRAWN BY
DATE:
OPTION

MODEL
STANDARD DETAILS
DRAWING TITLE
INTERIOR TRIM DETAILS
BATH DETAILS
OPTION DESCRIPTION

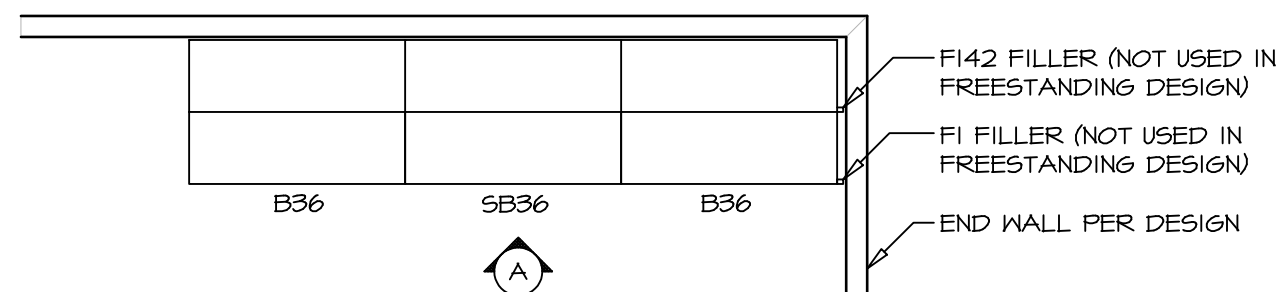
SHEET NO.
IT-2

NVR, Inc., owner, expressly reserves its common law copyright and other property rights in these plans. These plans are not to be reproduced, stored in a retrieval system, or transmitted in any form or by any means, electronic, mechanical, photocopying, recording, or by any information storage and retrieval system, without the prior written consent of NVR, Inc.

NVR
NVR, Inc.
Architectural Services
5285 Westpark Drive
Frederick, MD 21703

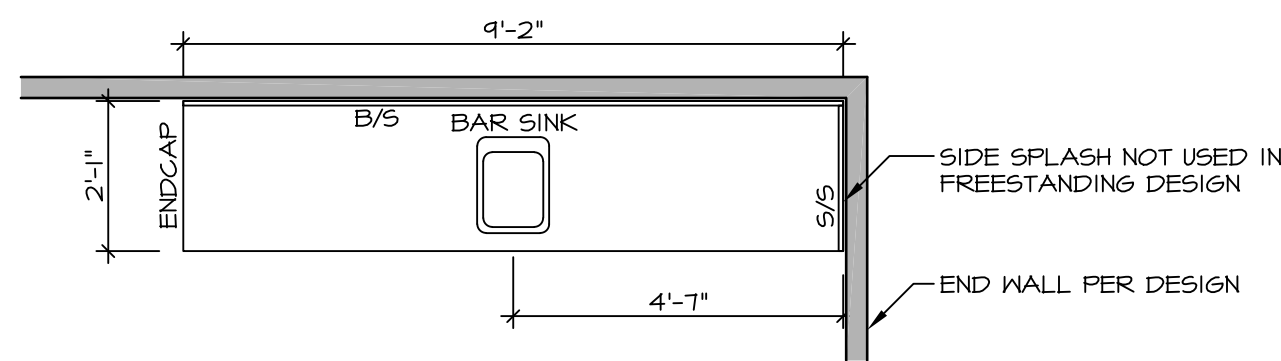
J:\Dwg\NVR\Interior Trim\IT2.dwg 09/27/17 - 9:20 am

NOTE:
REVIEW HOUSE SPECIFIC
PLANS FOR LOCATION
AND HANDING



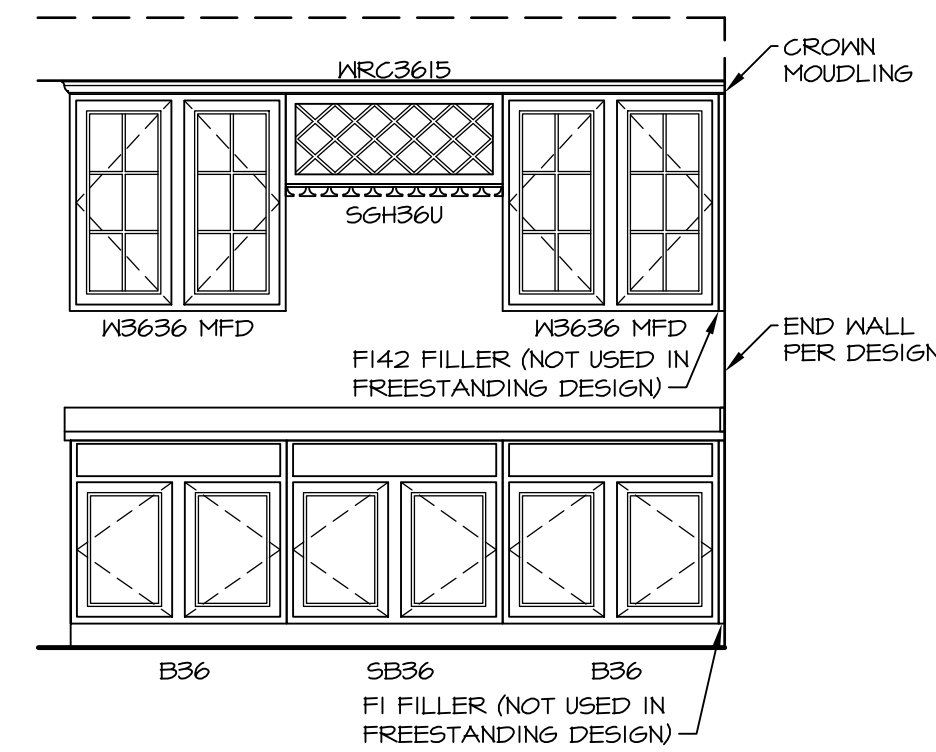
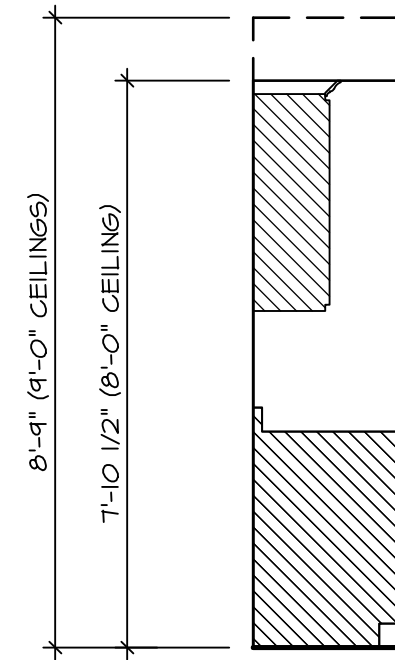
**KITCHEN CABINET
PLAN KC - 1900**

2
IT-3b SCALE: 3/8" = 1'-0"



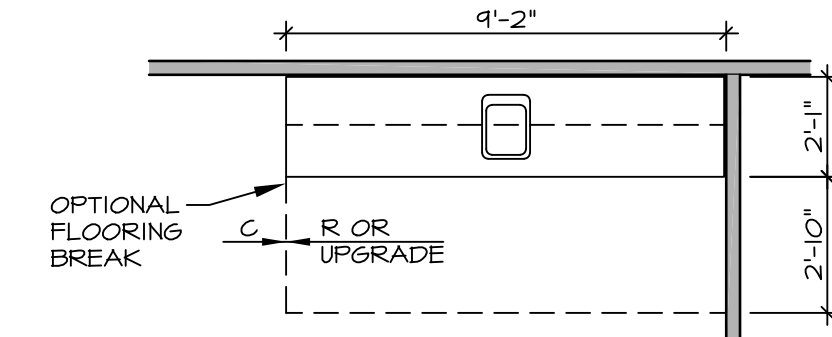
**KITCHEN COUNTERTOP
PLAN KT - 1900**

6
IT-3b SCALE: 3/8" = 1'-0"



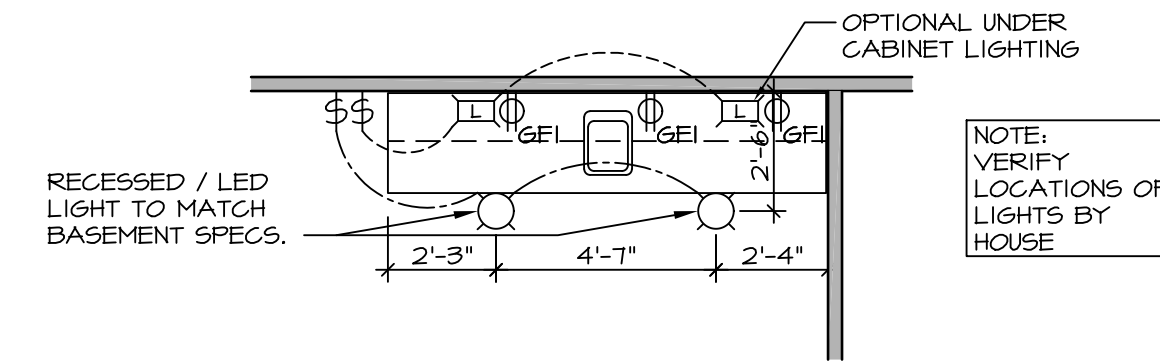
3 ELEVATION "A"

IT-3b SCALE: 3/8" = 1'-0"



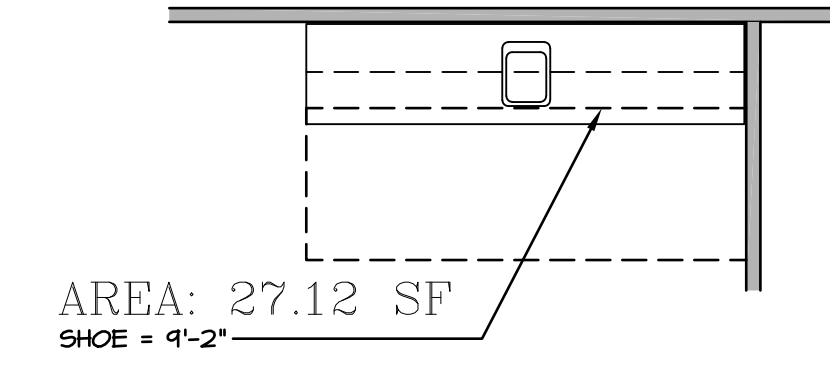
4 FLOOR PLAN

IT-3b SCALE: 1/4" = 1'-0"



7 FLOOR PLAN ELECTRICAL LAYOUT

IT-3b SCALE: 1/4" = 1'-0"



5 FLOORING PLAN

IT-3b SCALE: 1/4" = 1'-0"

1 WET BAR DETAILS

IT-3b SCALE: VARIES * SHOWN AS END WALL DESIGN

SHEET NO. IT-3b	MODEL STANDARD DETAILS	SET NO. NVR	REVISION	DATE	OPTION
	DRAWING TITLE INTERIOR TRIM DETAILS	VERSION	DRAWN BY		
	WET BAR DETAILS - BACK BAR (RYAN ONLY)				
	OPTION DESCRIPTION				
NVR, Inc. Architectural Services Architects 5285 West Annapolis Avenue, Suite 100 Frederick, MD 21703		NVR, Inc., owner, expressly reserves its common law copyright and other property rights in these plans. These plans are not to be altered, copied, reproduced, or otherwise used in any way without the express written consent of NVR, Inc.			
J:\Dwg\NVR\Interior Trim\113.dwg 09/14/17 - 7:11 am		REMARKS 1 5/17/17 56A - REVISED FLOOR PLAN DIMENSIONS TO MATCH COUNTERTOP DIMENSIONS 2 5/23/17 56A - REMOVED COUNTERTOP INFORMATION FROM 2/IT-3b 3 6/5/17 56A - REMOVED U.C. REF. AND TURNED OFF FLOORING SPACES 4 9/14/17 EBP - ADDED NOTE TO RECESSED LIGHT / LED LIGHT IN NET BAR			