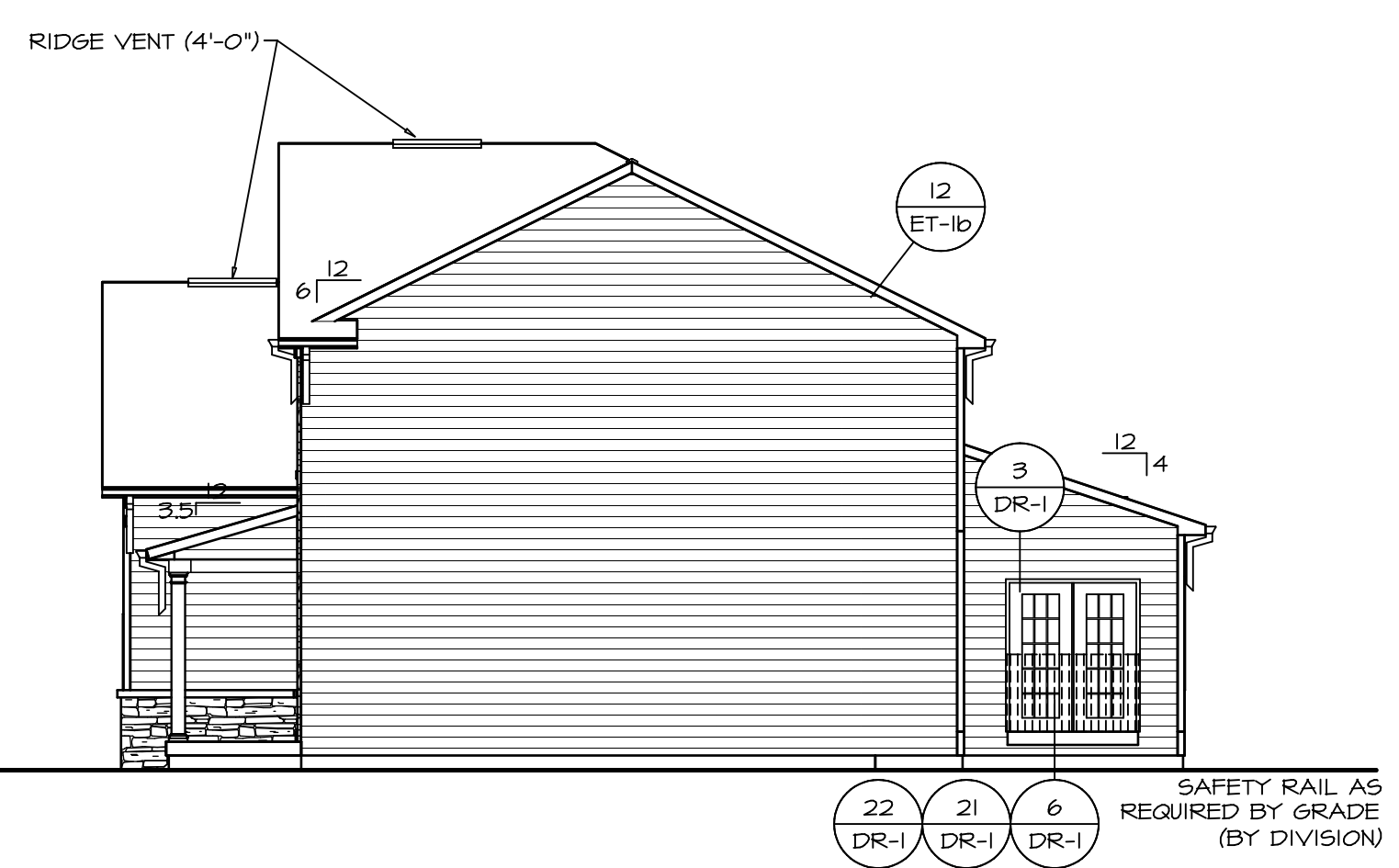


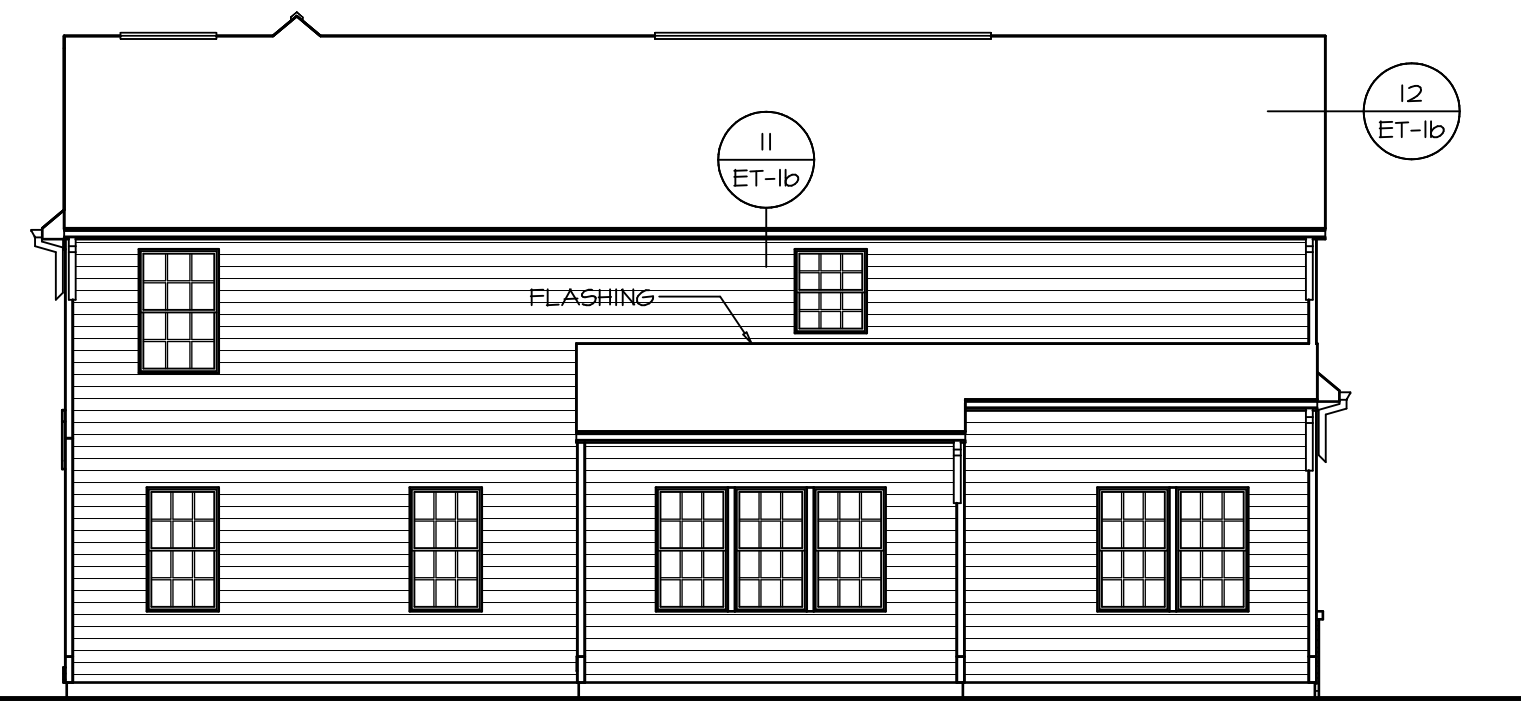
**FRONT ELEVATION "C"**

SCALE: 1/4" = 1'-0" A-1



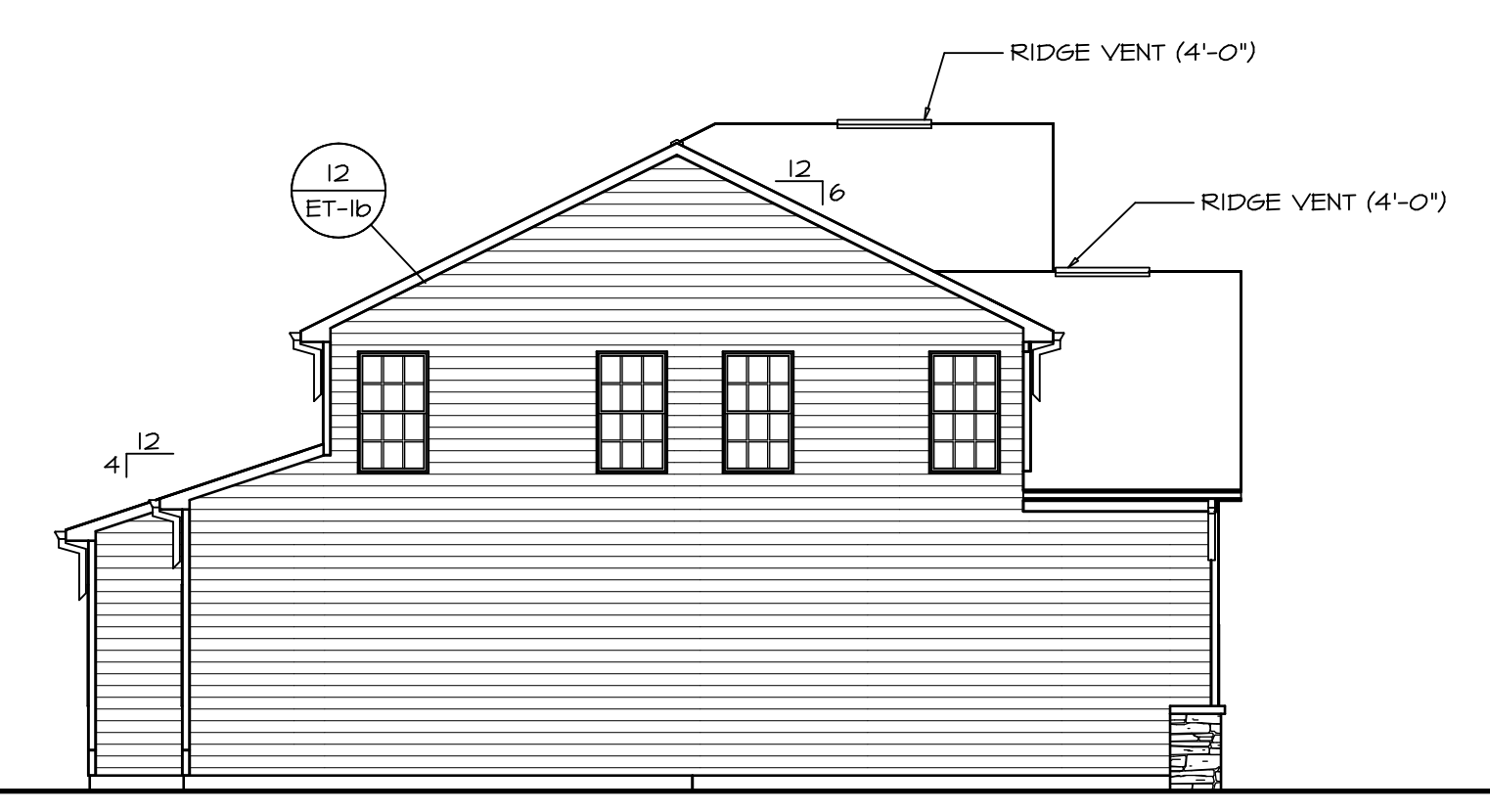
**RIGHT ELEVATION**

SCALE: 1/8" = 1'-0" A-1



**REAR ELEVATION**

SCALE: 1/8" = 1'-0" A-1

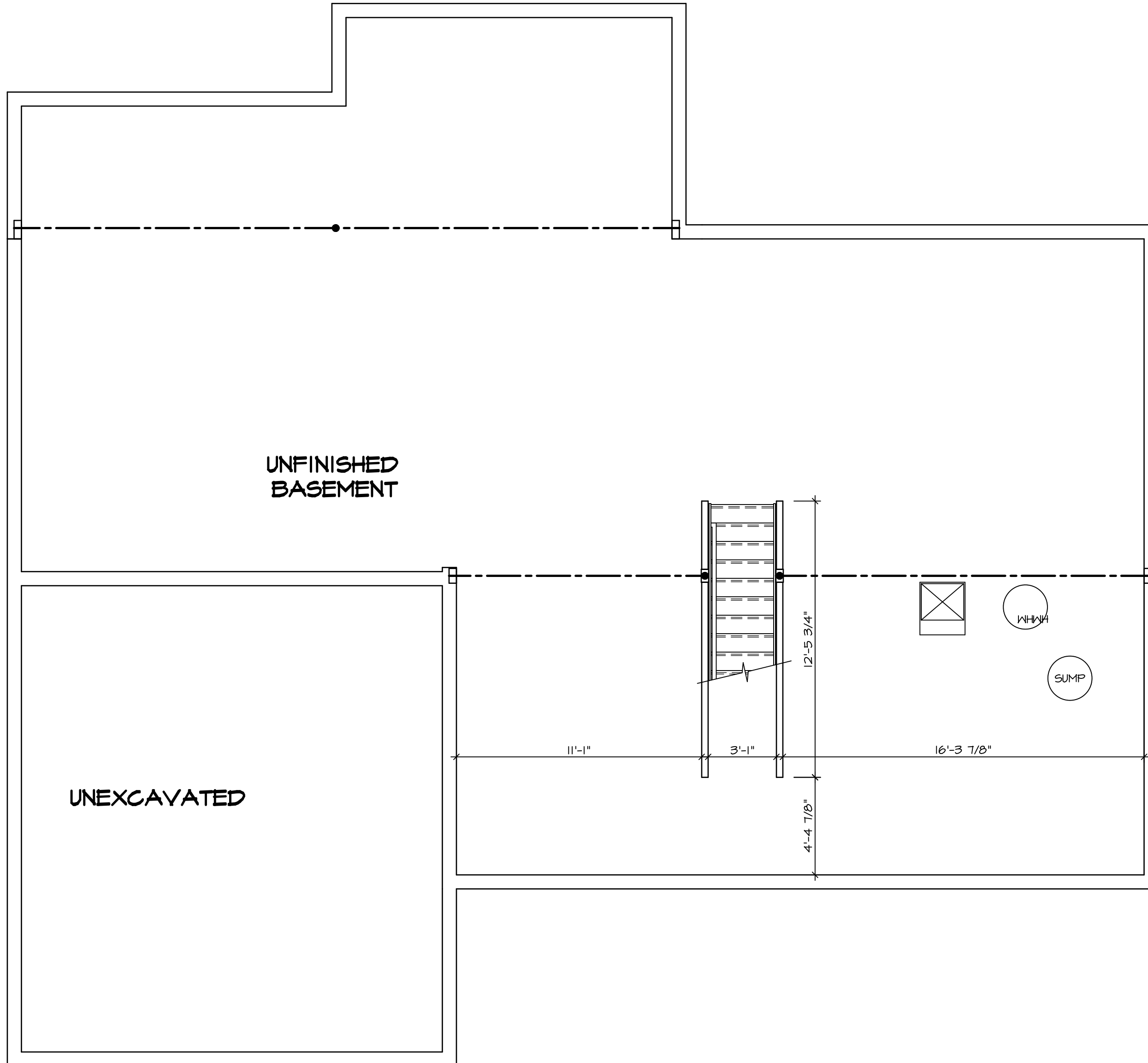


**LEFT ELEVATION**

SCALE: 1/8" = 1'-0" A-1

SHEET NO. <b>A-1</b>	MODEL <b>RAVENNA</b>	SET NO. <b>RVN00</b>	VERSION <b>03</b>	DATE:	OPTION <b>FBA</b>
		DRAWING TITLE <b>ELEVATIONS</b>	DRAWN BY:	DATE:	OPTION <b>FBA</b>
<b>6</b>	FULL BASEMENT FOUNDATION	OPTION DESCRIPTION			
		REMARKS			
<p>NVR, Inc., owner, expressly reserves its copyright in these plans. These plans are not to be reproduced, changed, copied, or otherwise used in any way without the written consent of NVR, Inc.</p>					
<p><b>NVR</b> NVR, Inc. Architectural Services Architects 21 Park Co. Rd. #100 Frederick, MD 21702</p>					
<p>C:\NVR\Solves\RAVENNA_RVN00_03\DCY-CH-172144\Sheets\Lot_Specific\B A-1 ELV_LS (FBA).dwg 04/27/18 - 3:03 pm</p>					





**LEGEND**

	BEARING WALL
	NON BEARING WALL
	INDICATES BEARING FROM POINT-LOAD ABOVE
	JACKS
	BEAM/HEADER
	PAD FOOTING
	STEEL COLUMN
	PORTAL FRAME
	JOIST/TRUSS
	LVL
	ENGINEERING PAGE NUMBER

SEE FC DETAILS FOR FRAMING CONNECTORS

- FLOOR PLAN NOTES**
- ALL HEADERS ARE (2) 2x6 w/ 2x4 WALLS OR (3) 2x6 w/ 2x6 WALLS, UNLESS OTHERWISE NOTED.
  - ALL HEADERS TO HAVE (1) 2x4 OR 2x6 JACK EACH END, UNLESS OTHERWISE NOTED.
  - ALL EXTERIOR WALLS TO BE 4" AND ALL INTERIOR WALLS TO BE 3 1/2" UNLESS OTHERWISE NOTED.
  - HATCHED AREAS INDICATE DROPPED CEILINGS. ALL DROPPED CEILINGS ARE 12" UNLESS OTHERWISE NOTED.
  - SEE "BRACED WALL PANEL DETAIL SHEET" FOR SPECIAL WALL FRAMING LOCATIONS AND HEADER SIZES, IF APPLICABLE.
  - SEE STANDARD DETAIL CATEGORY "IT" SHEET(S) FOR INTERIOR TRIM DETAILS.
  - SEE ARCHITECTURAL DETAIL SHEET "AD" FOR HOUSE SPECIFIC INTERIOR TRIM OPTION TABLE.
  - ALL WINDOWS HAVE 7'-0 1/2" HEADER HEIGHT UNLESS OTHERWISE NOTED.

- GYPSUM NOTES**
- AT GARAGE:  
GYPSUM BOARD AT COMMON WALLS, CEILINGS, BEAM WRAPS AND SUPPORTS PER STANDARD DETAIL FA-1(b) FIRE ASSEMBLIES OR AS REQUIRED BY LOCAL CODE.
- AT STAIRS:  
1/2" GYPSUM BOARD AT UNDERSIDE OF STAIRS AND WALLS IN CLOSET

SHEET NO. <b>A-7</b>	MODEL <b>RAVENNA</b>	DRAWING TITLE <b>BASEMENT FLOOR PLAN</b>	OPTION DESCRIPTION <b>4-4</b>	SET NO. RYNOO	REVISIONS	DATE	REMARKS
				VERSION 03	DRAWN BY	08/02/16 TH - DRAWING ALIGNMENT	
				<p>NVR, Inc., owner, expressly reserves its copyright in these plans. These plans are not to be reproduced, changed, copied, or otherwise used without the prior written consent of NVR, Inc.</p>			
				<p><b>NVR</b> Architectural Services Architects 21 Bay View Frederick, MD 21702</p>			
				<p>C:\NVR\Solves\RAVENNA_RYNOO_03\DCY-GH-M27\772144\Sheets\Lot-Specific\44 A-7 BSMT_LS.dwg 04/27/18 - 5:04 am</p>			

**BASEMENT FLOOR PLAN**  
SCALE: 1/4" = 1'-0"

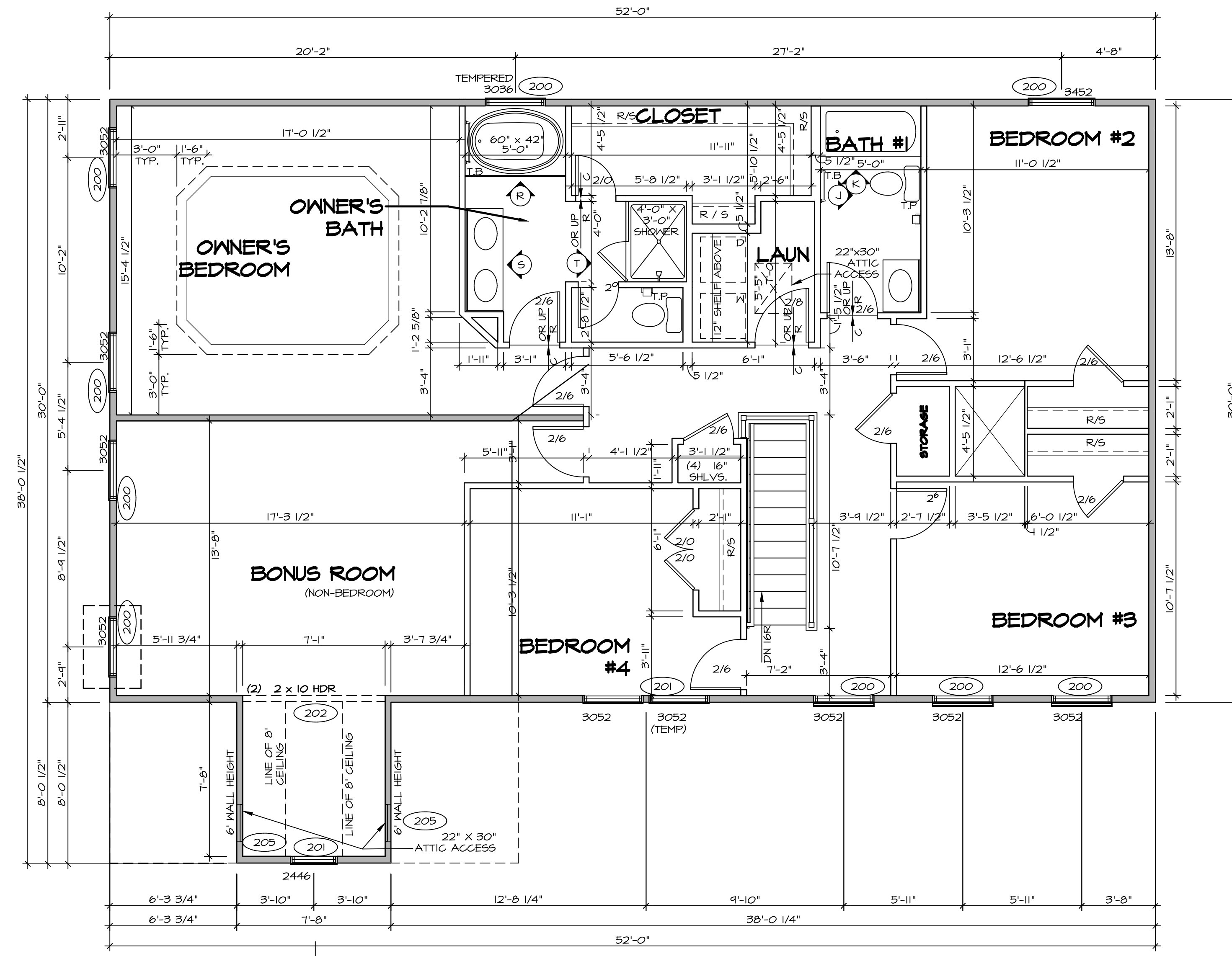


SECOND FLOOR JACK SCHEDULE				
IDENTIFIER	DESCRIPTION	OPTIONS	ENG. NUM.	REMARKS

LEGEND	
	BEARING WALL
	NON BEARING WALL
	INDICATES BEARING FROM POINT-LOAD ABOVE
	JACKS
	BEAM/HEADER
	PAD FOOTING
	STEEL COLUMN
	PORTAL FRAME
	JOIST/TRUSS
	LVL
	ENGINEERING PAGE NUMBER

SEE FC DETAILS FOR FRAMING CONNECTORS

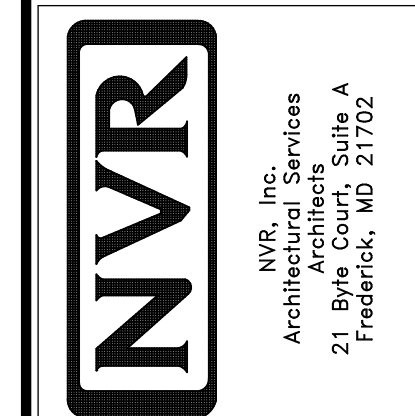
- FLOOR PLAN NOTES**
- ALL HEADERS ARE (2) 2x6 w/ 2x4 WALLS OR (3) 2x6 w/ 2x6 WALLS, UNLESS OTHERWISE NOTED.
  - ALL HEADERS TO HAVE (1) 2x4 OR 2x6 JACK AND KING STUD EACH END, UNLESS OTHERWISE NOTED.
  - ALL EXTERIOR WALLS TO BE 4" w/ OSB OR 3 1/2" w/ T-PLY; ALL INTERIOR WALLS TO BE 3 1/2", UNLESS OTHERWISE NOTED.
  - HATCHED AREAS INDICATE DROPPED CEILINGS. ALL DROPPED CEILINGS ARE 12" UNLESS OTHERWISE NOTED.
  - SEE "BRACED WALL PANEL DETAIL SHEET" FOR SPECIAL WALL FRAMING LOCATIONS AND HEADER SIZES, IF APPLICABLE.
  - SEE STANDARD DETAIL CATEGORY "IT" SHEET(S) FOR INTERIOR TRIM DETAILS.
  - SEE ARCHITECTURAL DETAIL SHEET "AD" FOR HOUSE SPECIFIC INTERIOR TRIM OPTION TABLE.
  - ALL WINDOWS HAVE 7'-0 1/2" HEADER HEIGHT UNLESS OTHERWISE NOTED.
  - ALL HEADERS IN NON-BEARING WALLS SHALL BE A SINGLE FLAT 2X4 OR 2X6 ATTACHED TO CRIPPLES ABOVE, UNLESS OTHERWISE NOTED.



**SECOND FLOOR PLAN**  
SCALE: 1/4" = 1'-0"

REV. NO.	DATE	REMARKS
1	08/02/16	TM - DRAWING ALIGNMENT
2	6/28/17	TRV - REVISED ROOF ACCESS PANELS
3	07/11/17	SL5 - T-PLY CONVERSION PROJECT

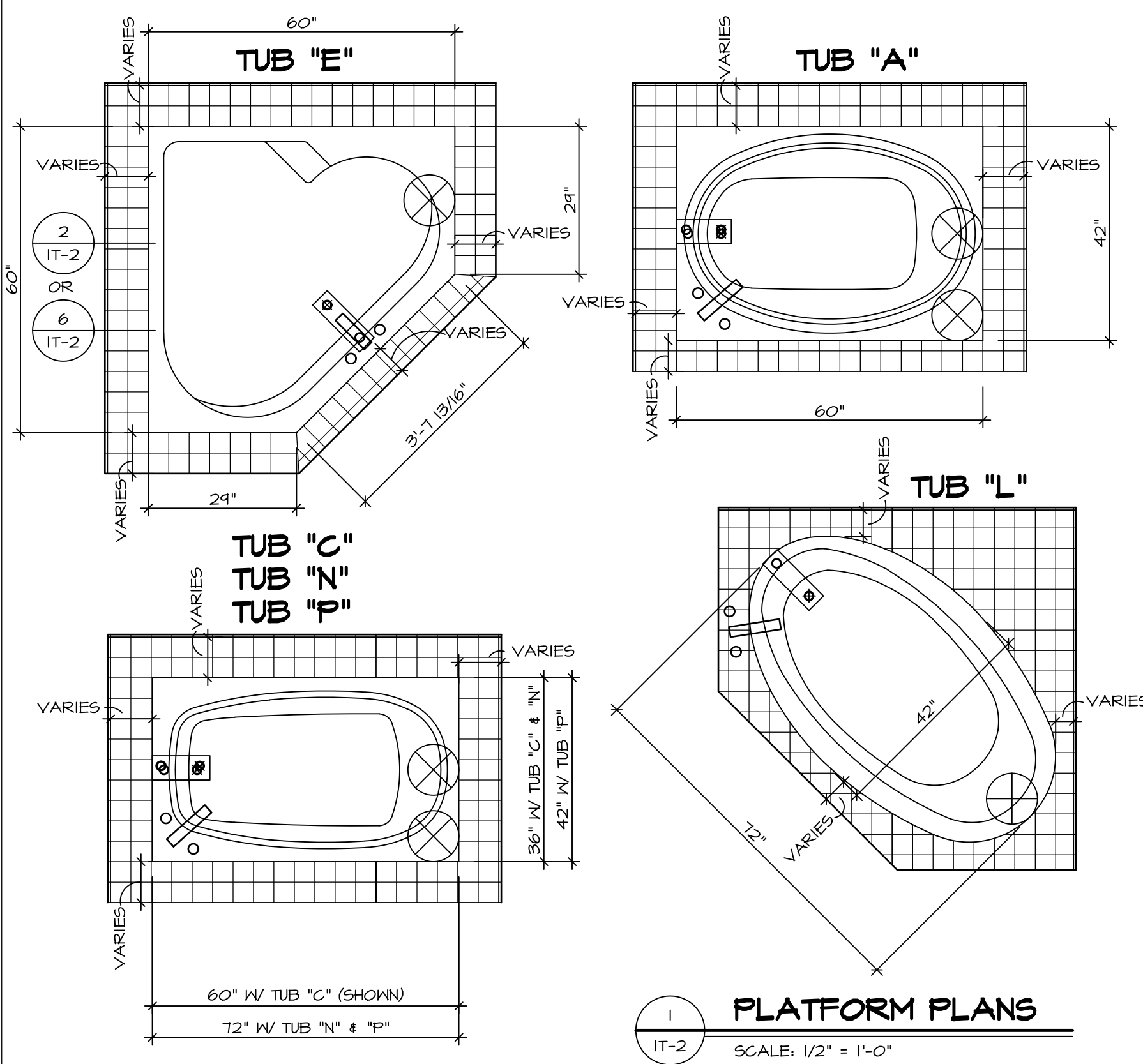
NVR, Inc., owner, expressly reserves its copyright in these plans. These plans are not to be reproduced, changed, copied, or otherwise used in any way without the written consent of NVR, Inc.



SET NO. RYNOO	VERSION 03
DRAWN BY	DATE:
OPTION	OPTION

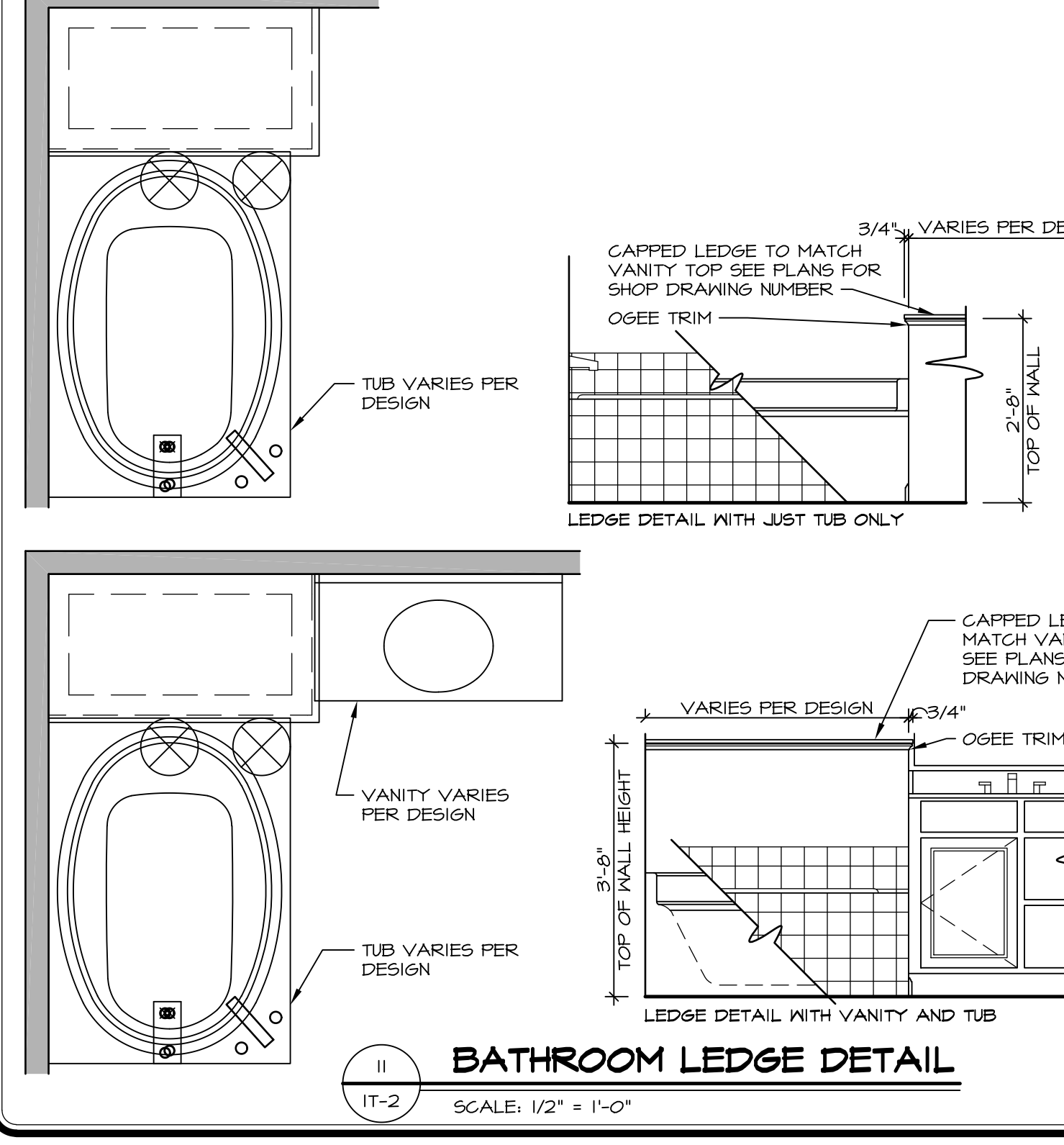
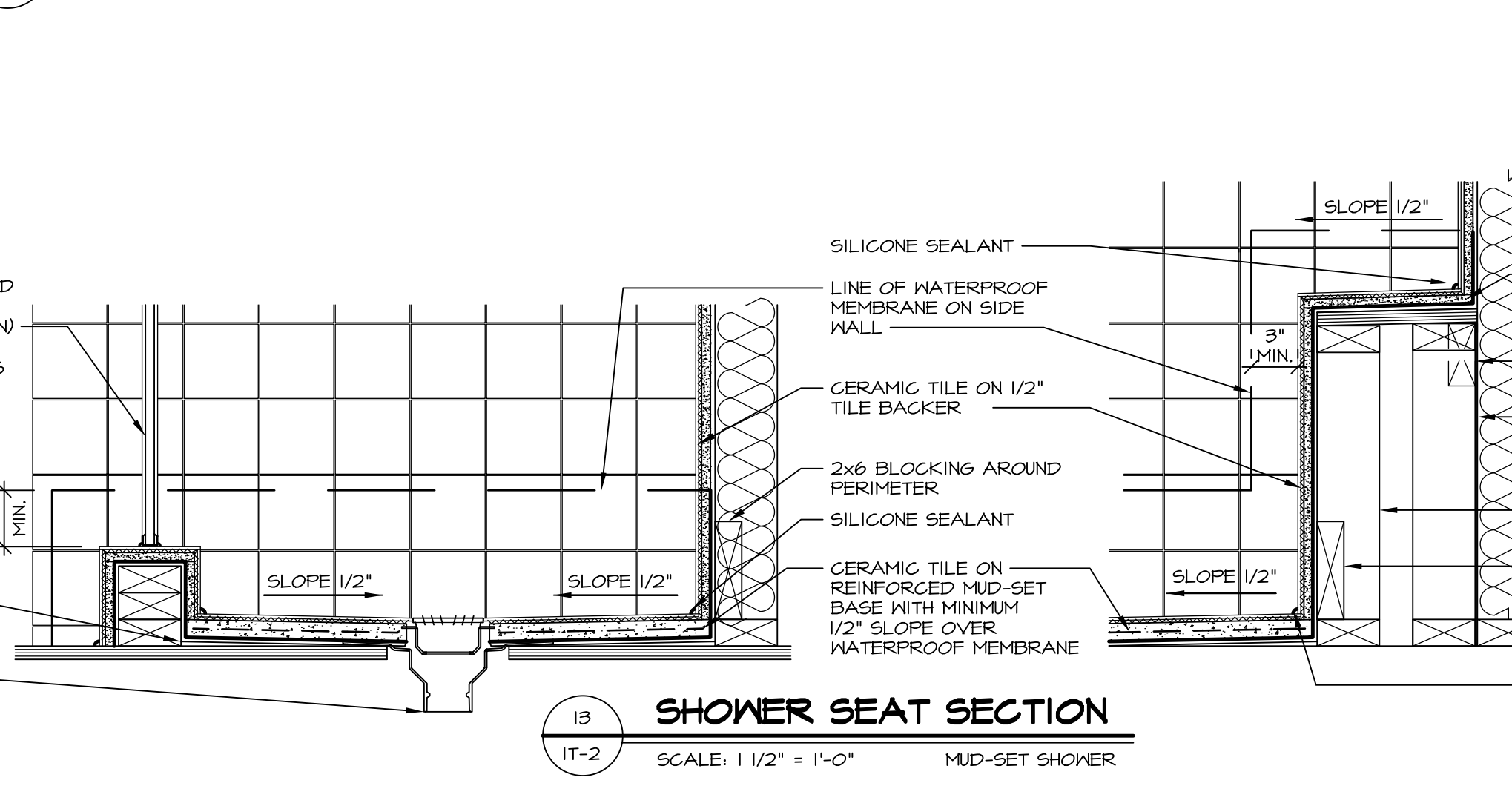
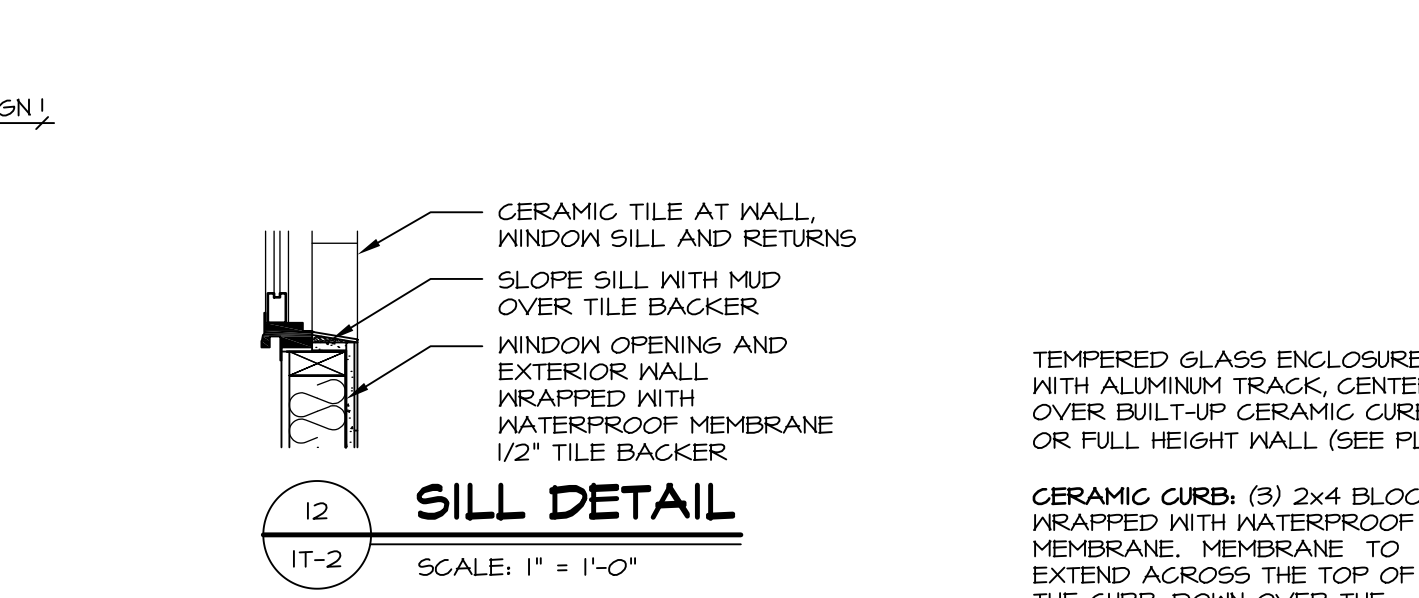
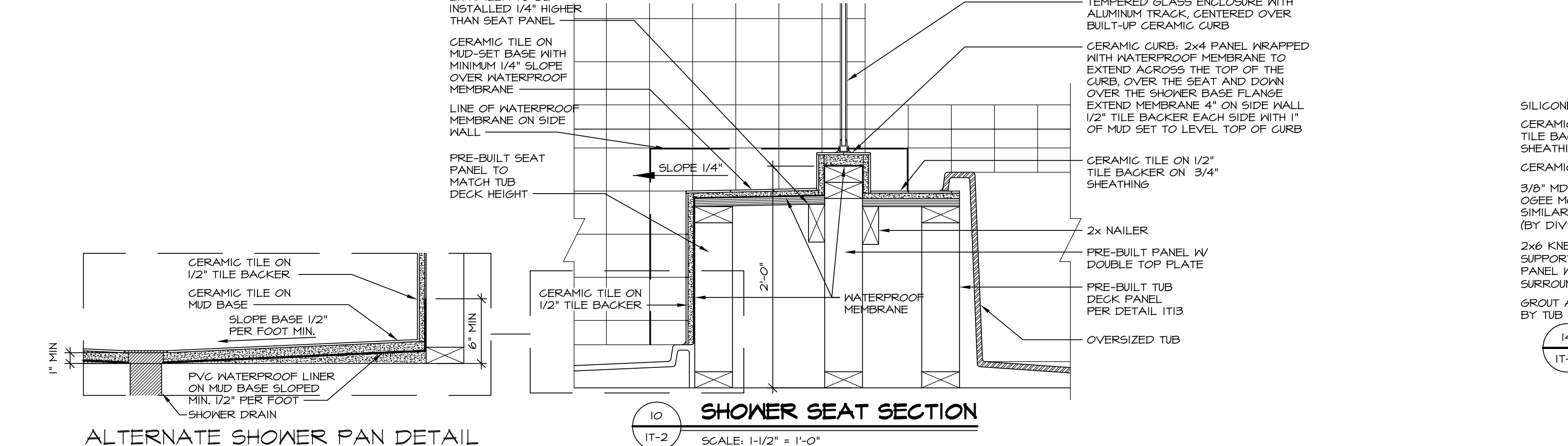
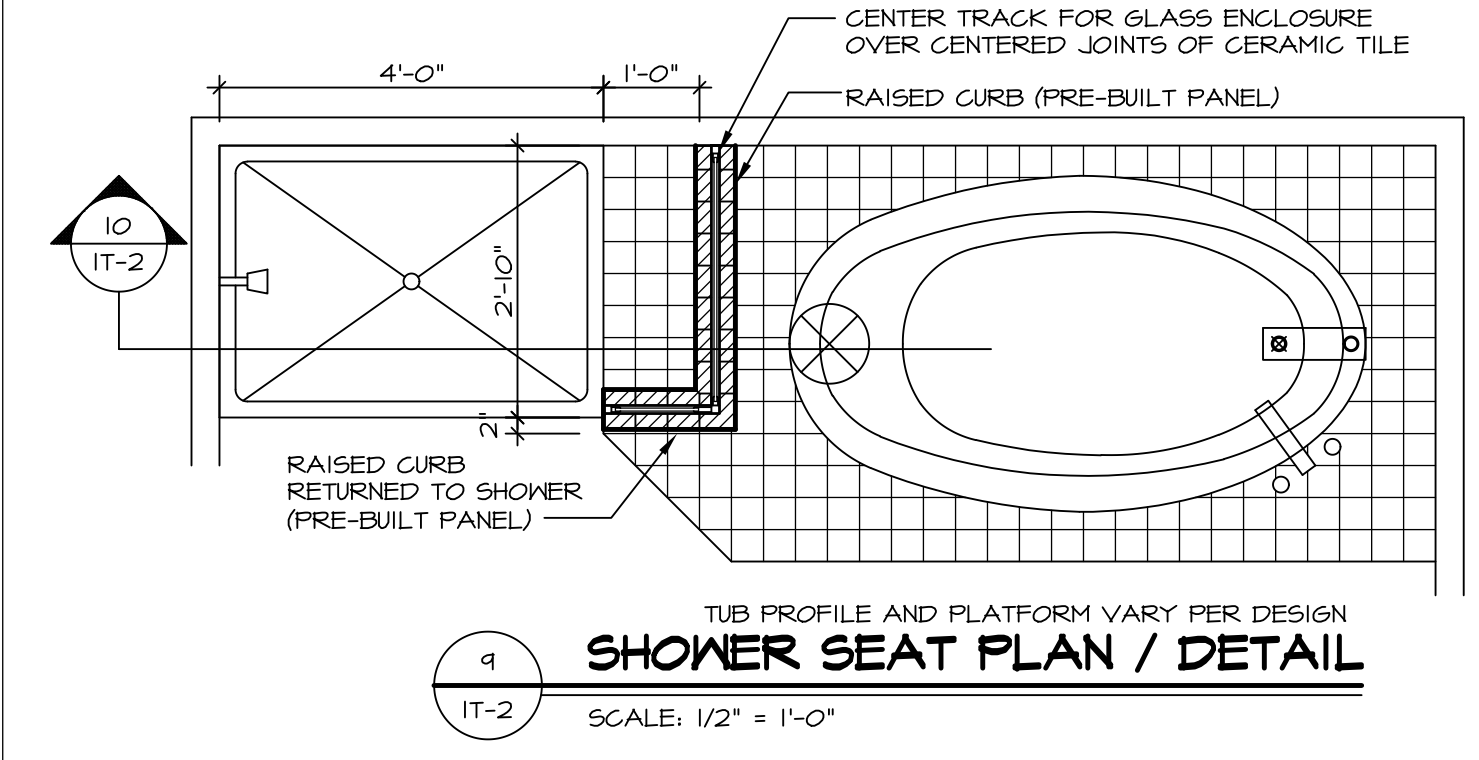
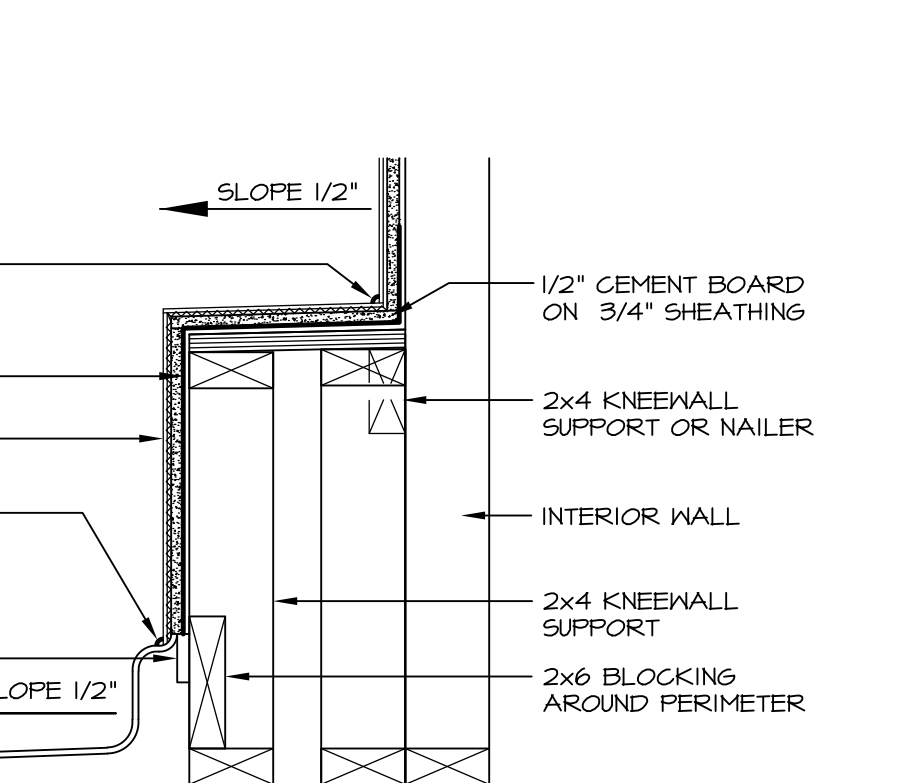
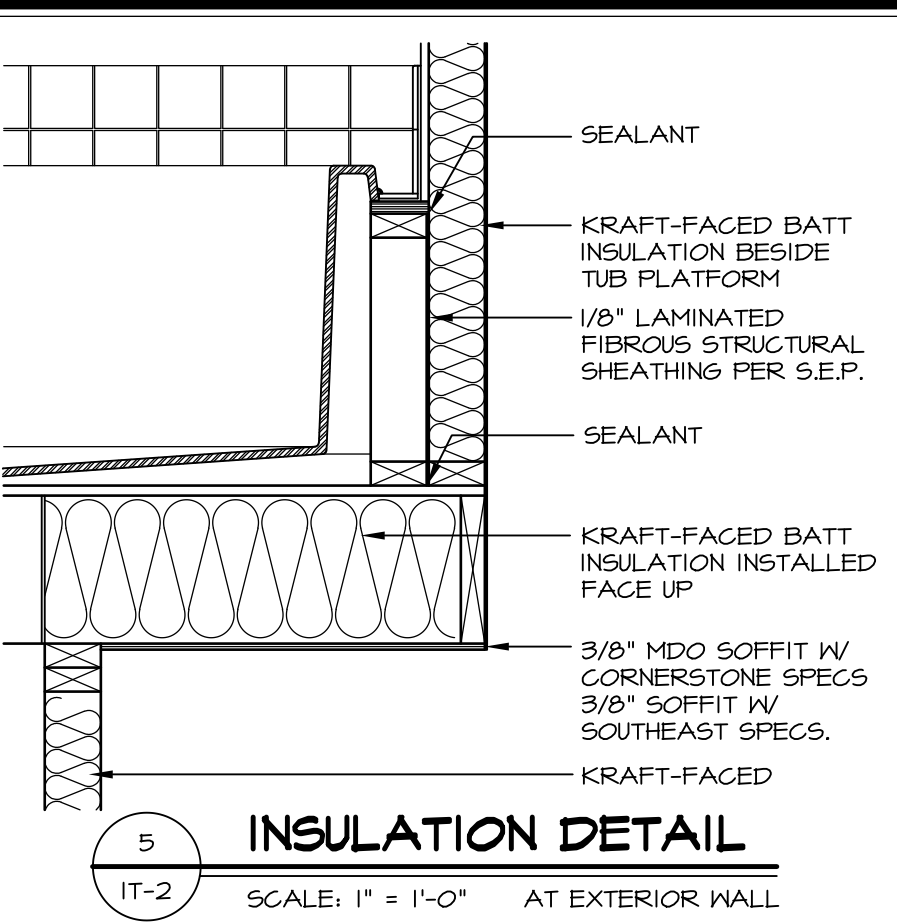
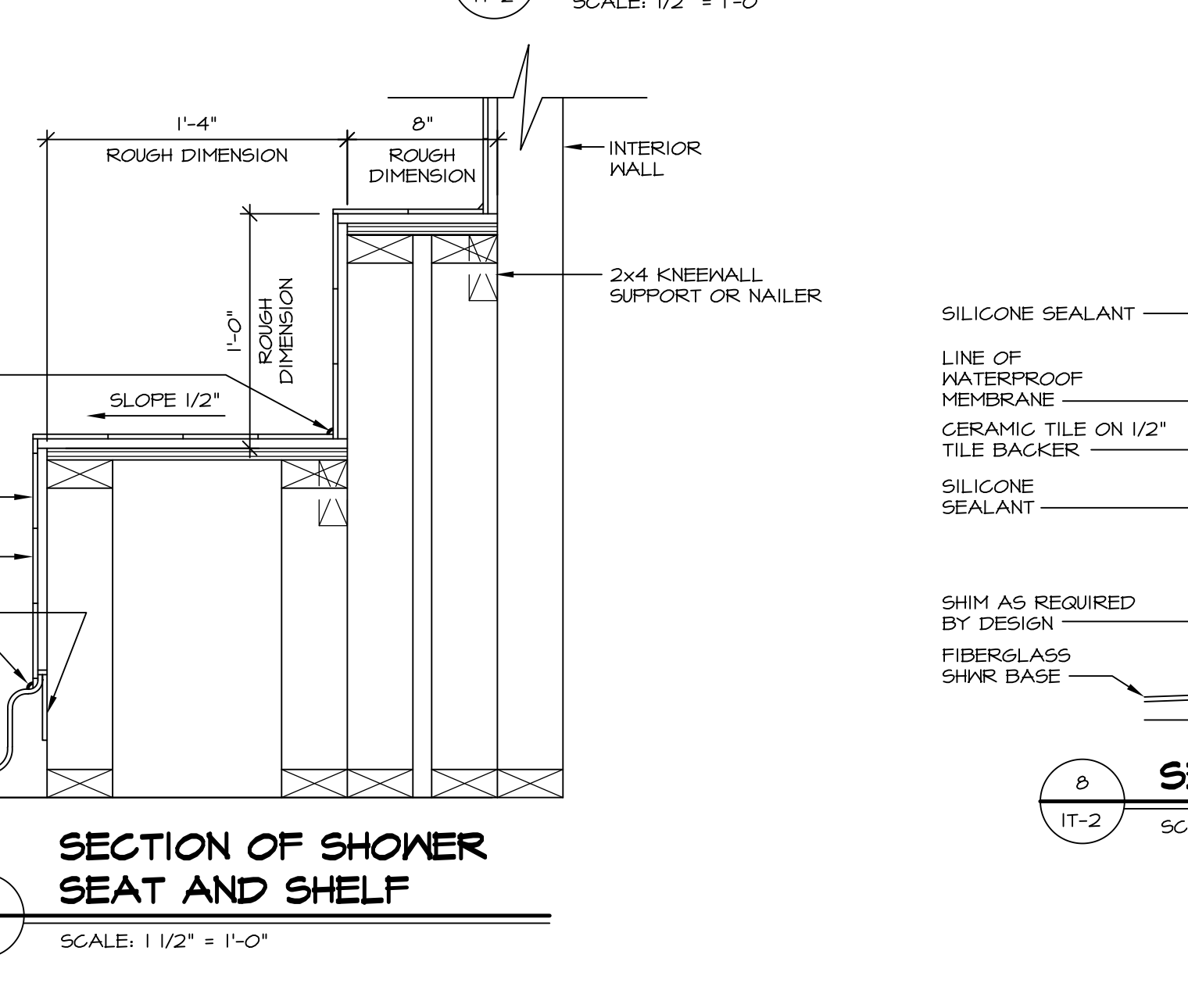
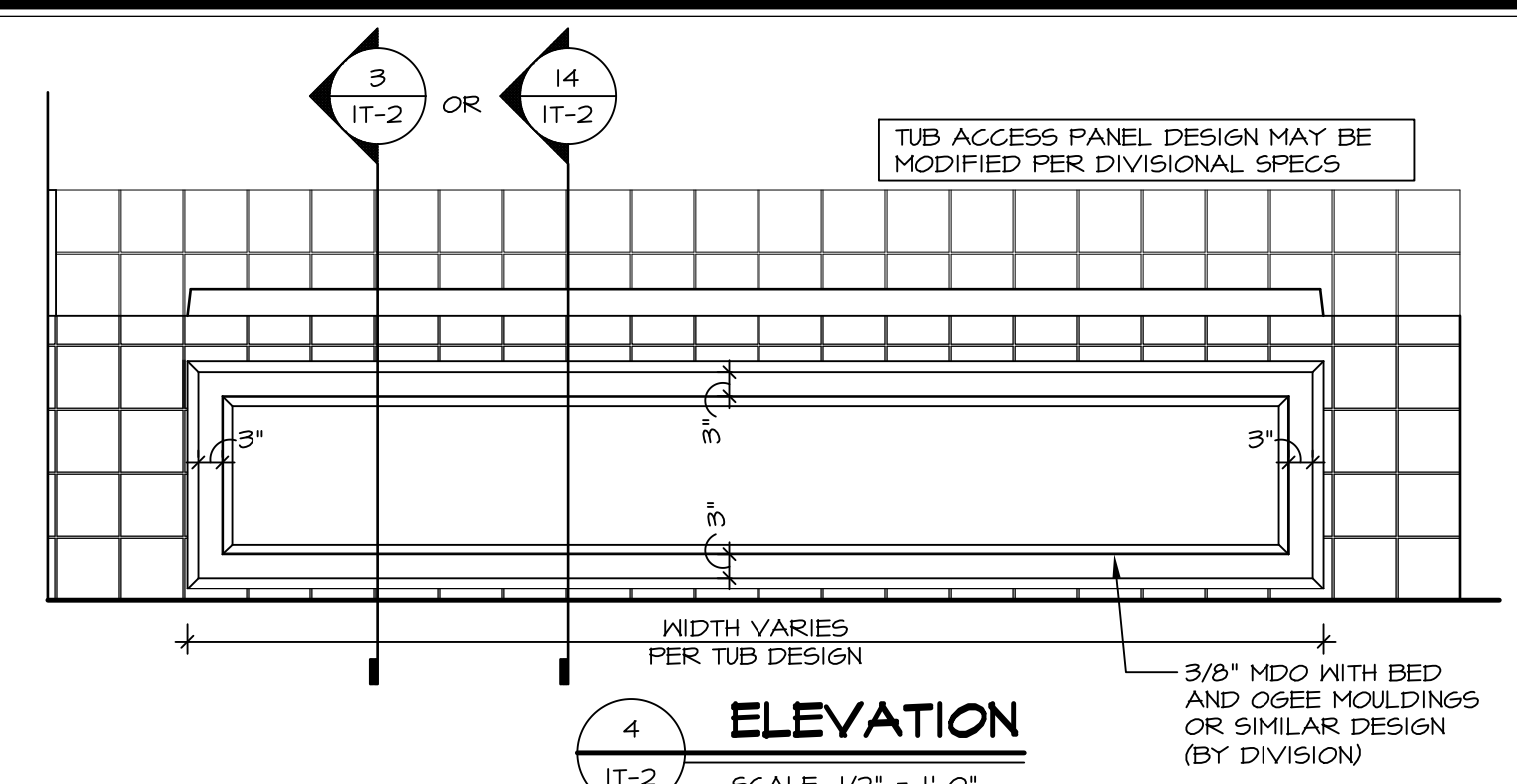
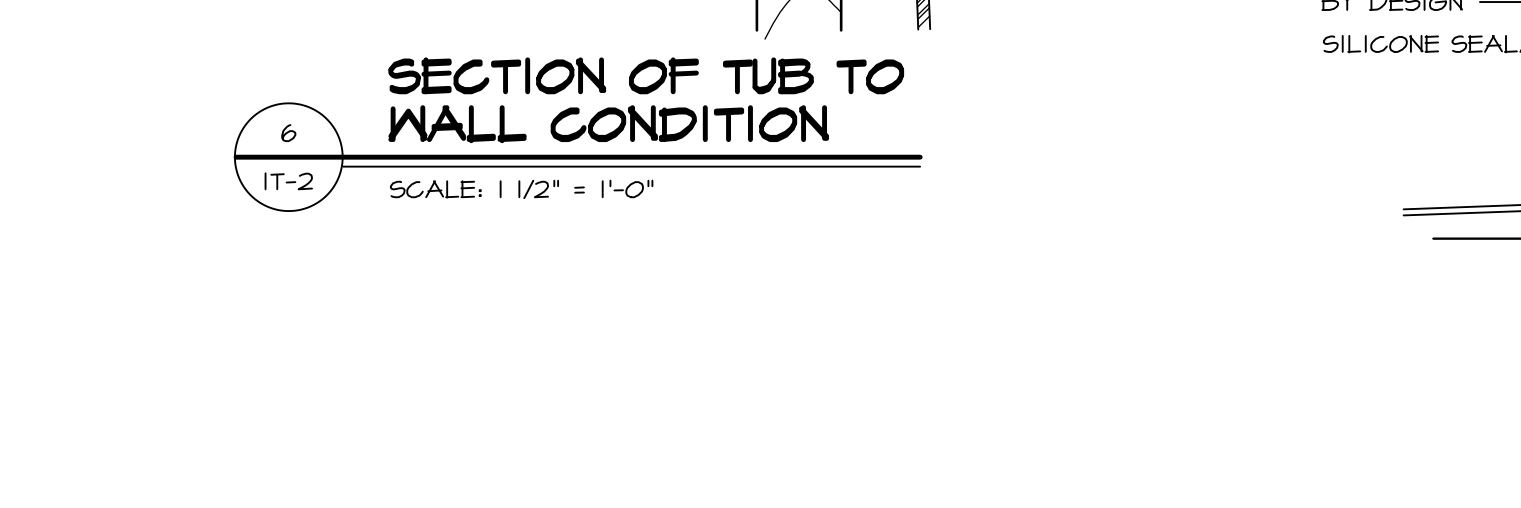
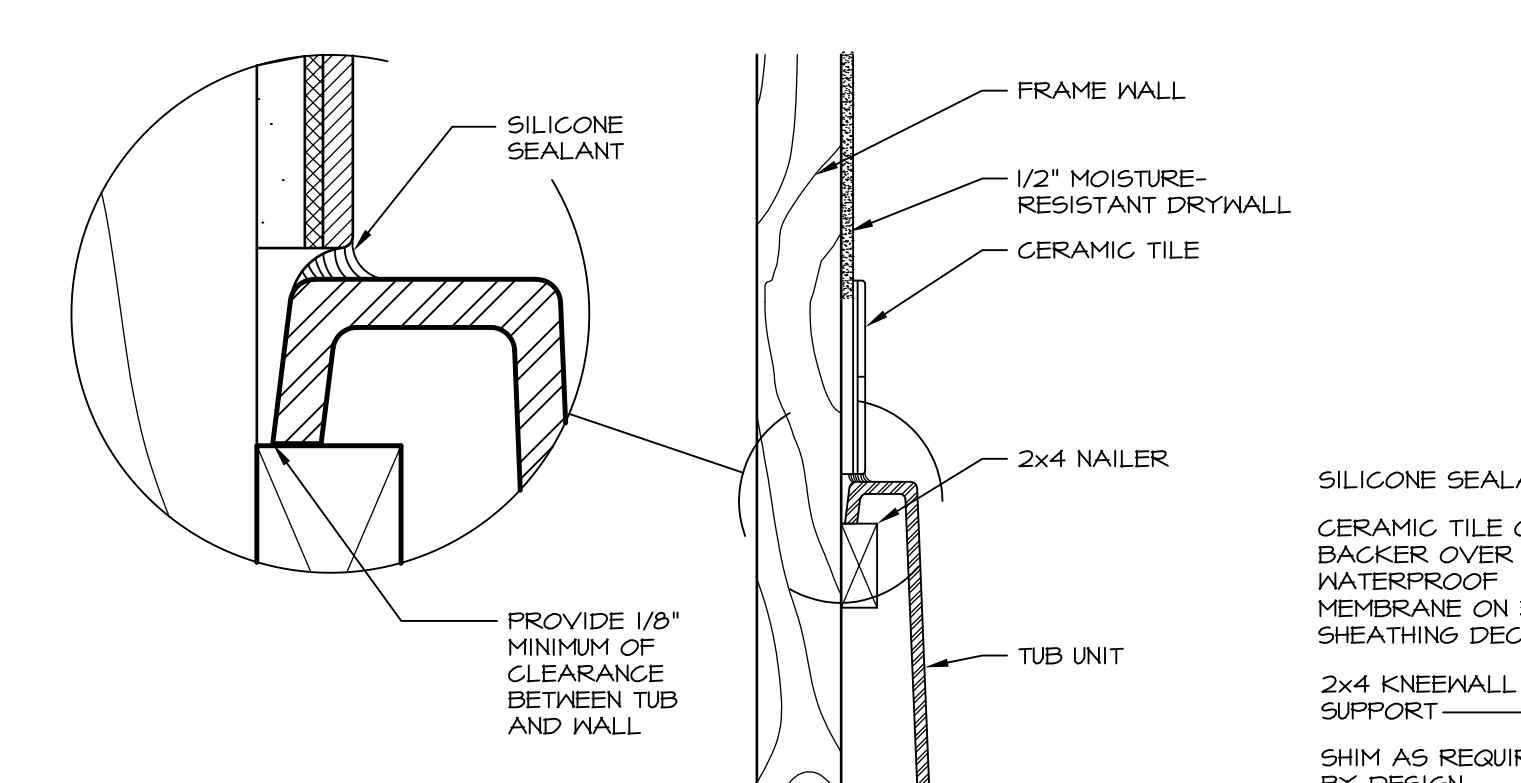
MODEL	RAVENNA
DRAWING TITLE	SECOND FLOOR PLAN
OPTION DESCRIPTION	
SHEET NO.	A-9
49	





**1 PLATFORM PLANS**  
SCALE: 1/2" = 1'-0"

TUB	MANUF.	HEIGHT	WIDTH	LENGTH	TUB DECK PANEL HEIGHT
"A"	KOHLER/STERLING	18 3/4"	42"	60"	17 1/8"
"C"	KOHLER/STERLING	18 3/4"	36"	60"	17 1/8"
"E"	KOHLER/STERLING	19 1/2"	60"	60"	17 7/8"
"L"	KOHLER/STERLING	18 1/2"	42"	72"	16 7/8"
"N"	KOHLER/STERLING	18 3/4"	36"	72"	17 1/8"
"P"	KOHLER/STERLING	18 3/4"	42"	72"	17 1/8"



REVISIONS

REV. NO.	DATE	DESCRIPTION
1	5/1/17	EBP - REVISED DETAIL 1 AND 11 TO REMOVE TUB ACCESS PANEL REF. (DSS #15 5414)
2	9/2/17	EBP - REVISED T-FLY NOTE TO CALL OUT LFS
3	9/2/17	EBP - REVISED NOTE ON DETAIL #1 - REVISED ORDER OF MATERIAL PARA#6934

REMARKS

NVR, Inc., owner, expressly reserves its common law copyright and other property rights in these plans. These plans are not to be reproduced, copied, or otherwise used in any way without the written consent of NVR, Inc.

**NVR**  
NVR, Inc.  
Architectural Services  
5285 Westpark Drive  
Frederick, MD 21703

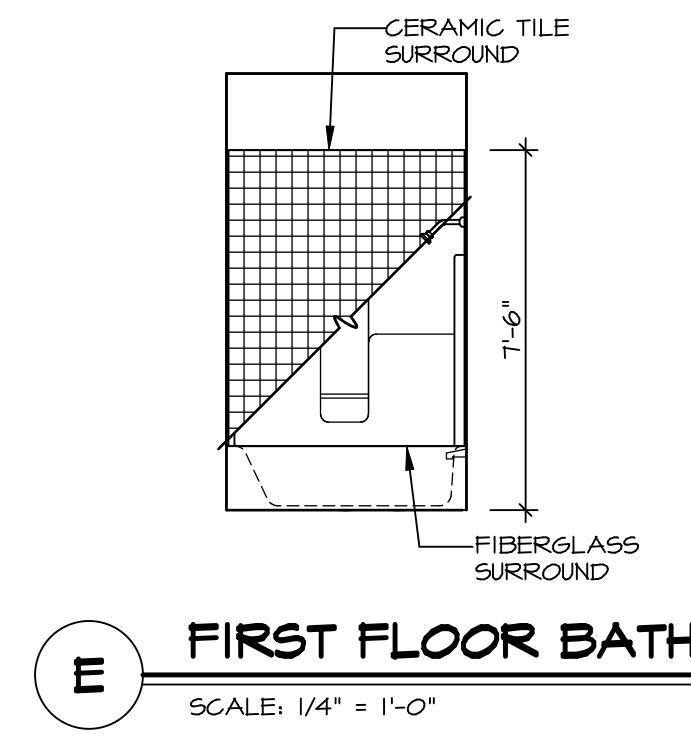
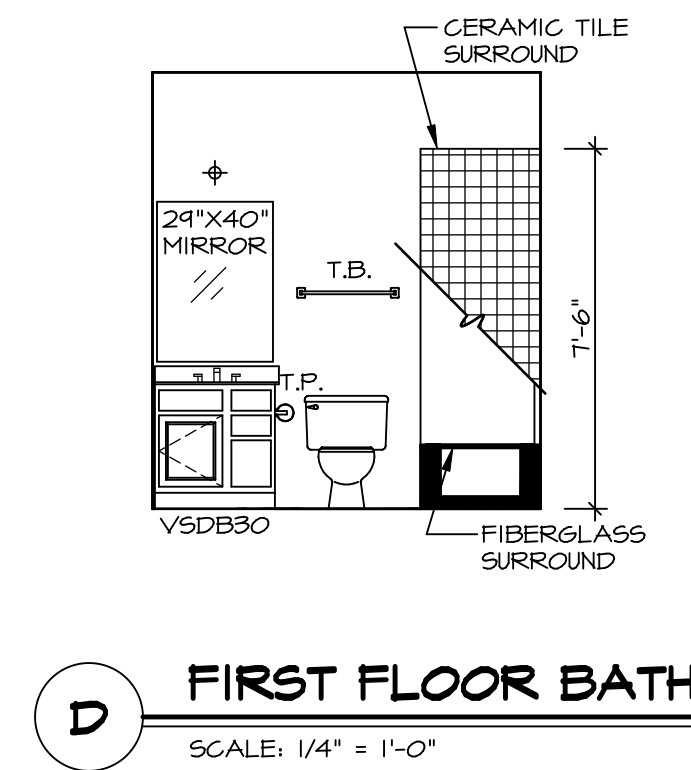
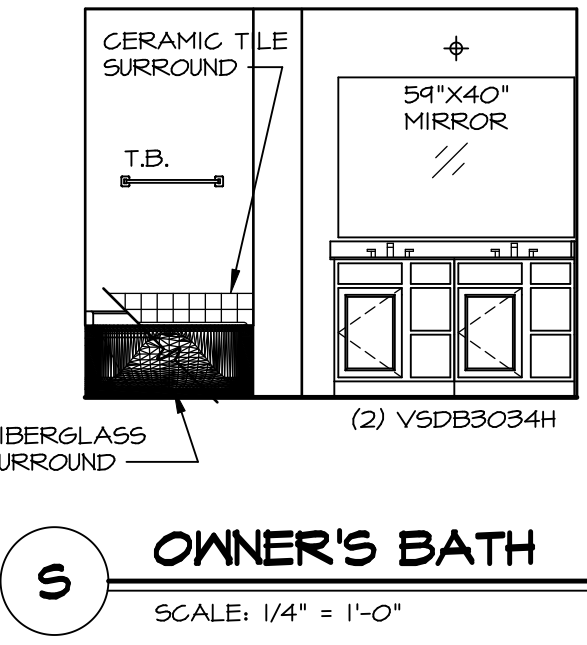
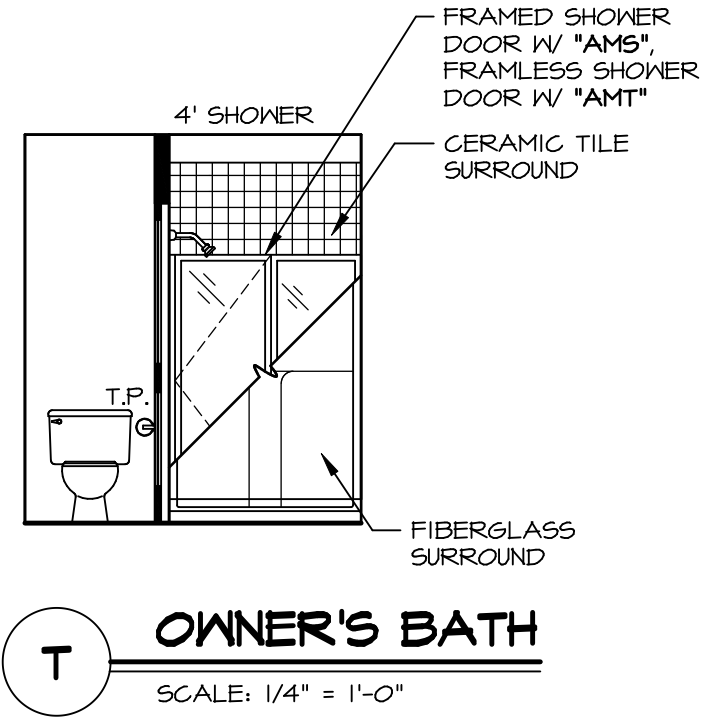
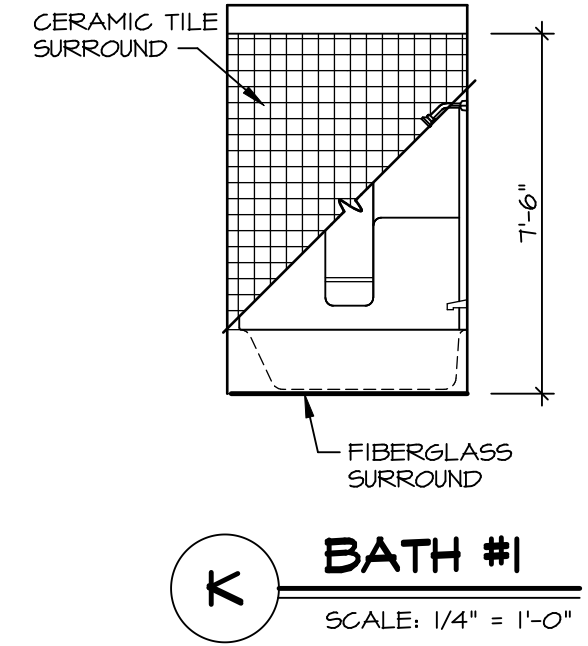
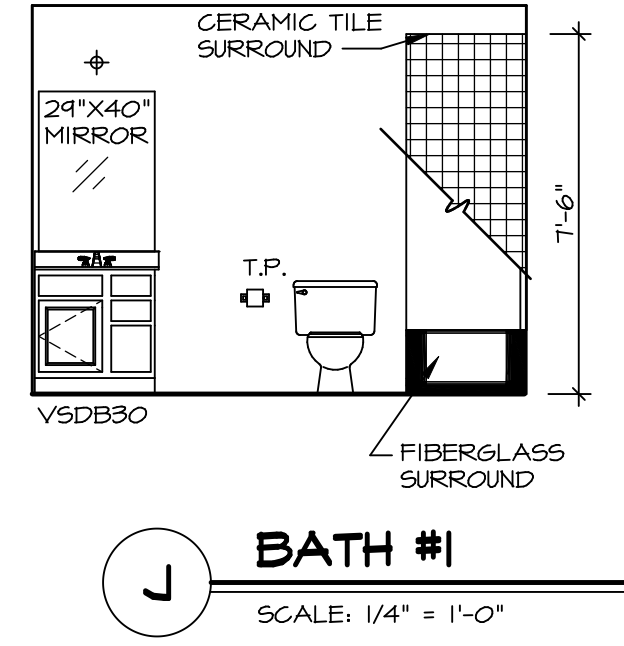
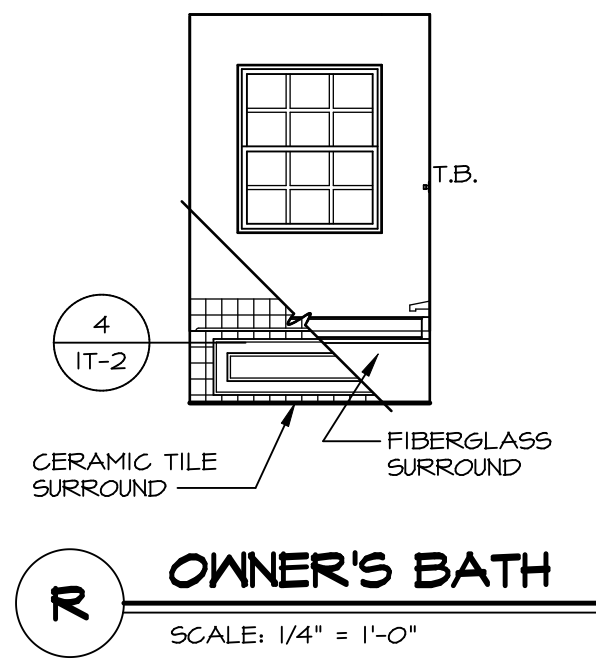
SET NO. NVR  
VERSION  
DRAWN BY  
DATE:  
OPTION

MODEL  
**STANDARD DETAILS**  
DRAWING TITLE  
INTERIOR TRIM DETAILS  
BATH DETAILS  
OPTION DESCRIPTION

SHEET NO.  
**IT-2**

J:\Dwg\NVR\Interior Trim\IT2.dwg 09/27/17 - 9:20 am





- NOTES:**
- TEMPERED GLASS SHOWER ENCLOSURE WITH SWING DOOR OR OPTIONAL SLIDING DOOR BY DIVISION
  - TUB ACCESS PANELS PROVIDED AS NEEDED. ALL MATERIALS BY DIVISION
  - REFER TO SHEET IT-2 FOR TUB AND SHOWER DETAILS.
  - ALL V5DB24-42 DRAWERS TO BE SET ON RIGHT HAND.
  - BATH ELEVATIONS ARE SHOWN PER PLAN.

SHEET NO.	MODEL	SET NO.	VERSION	DRAWN BY	DATE:	OPTION	DESCRIPTION	REMARKS
A-14	RAVENNA	03	03				BATH ELEVATIONS	
62								

NVR, Inc., owner, expressly reserves its copyright in these plans. These plans are not to be reproduced, changed, adapted in any way, or used for any purpose not intended by NVR, Inc. without the written consent of NVR, Inc.

