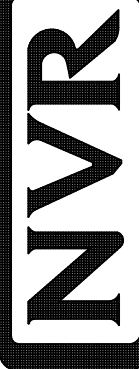


1
 A-5 **PLUMBING PLAN**
 SCALE: 1/4" = 1'-0"

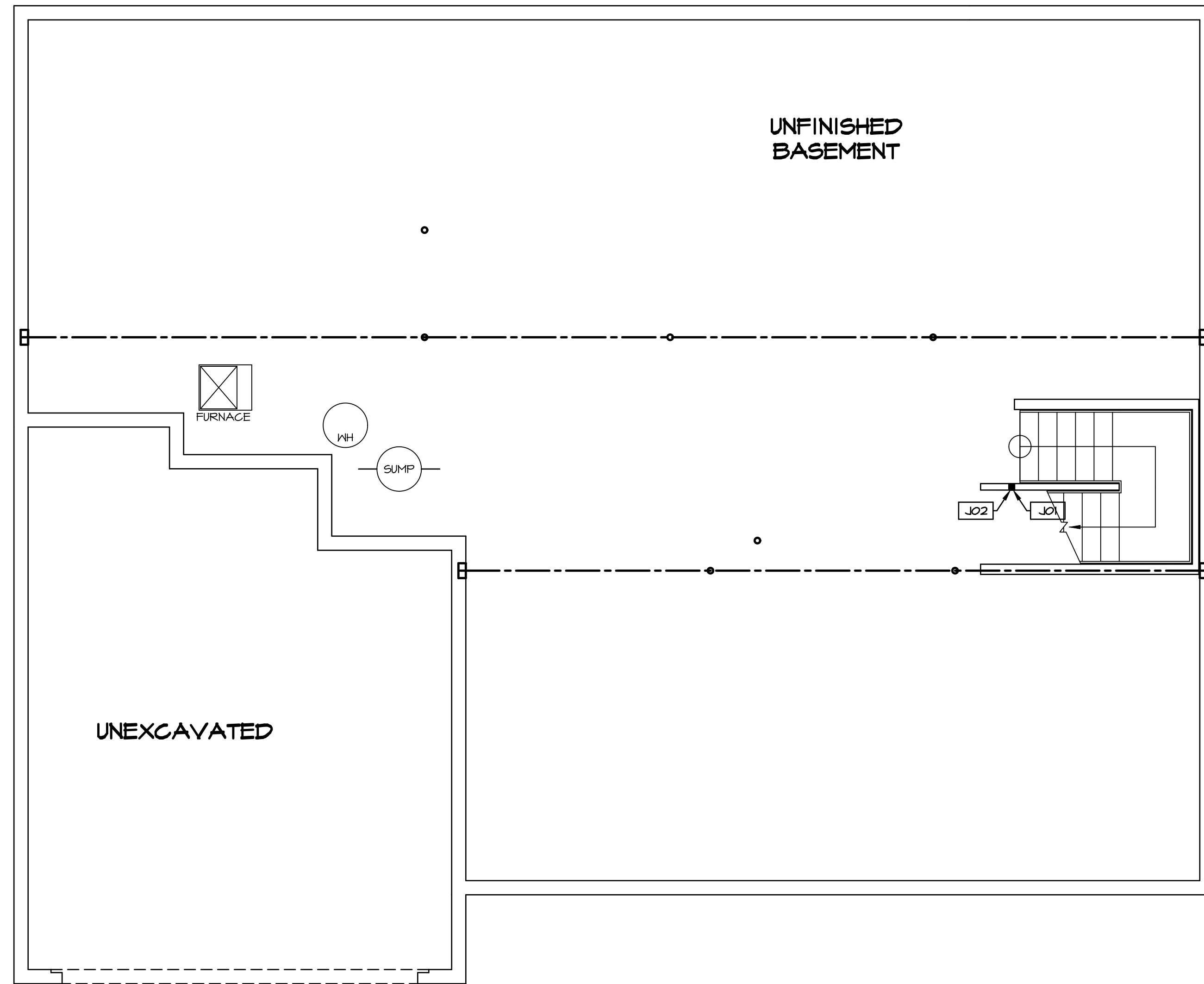
SHEET NO. A-5	MODEL NORMANDY	SET NO. NRM00	VERSION 01
	DRAWING TITLE PLUMBING PLAN	DRAWN BY RJC	
	OPTION DESCRIPTION	DATE 5/14/15	OPTION



NVR, Inc.
 Architects
 5285 Westheimer Blvd, Suite 100
 Houston, TX 77056

NVR, Inc., owner, expressly disclaims any copyright interest in the drawings or plans. These plans are not to be reproduced, changed, copied, or used in any way without the written consent of NVR, Inc.

REV. NO.	DATE	REMARKS



LEGEND	
	BEARING WALL
	NON BEARING WALL
	INDICATES BEARING FROM POINT-LOAD ABOVE
	JACKS
	BEAM/HEADER
	PAD FOOTING
	STEEL COLUMN
	PORTAL FRAME
	JOIST/TRUSS
	LVL
	ENGINEERING PAGE NUMBER

SEE FC DETAILS FOR FRAMING CONNECTORS

- FLOOR PLAN NOTES**
- ALL HEADERS ARE (2) 2x6 w/ 2x4 WALLS OR (3) 2x6 w/ 2x6 WALLS, UNLESS OTHERWISE NOTED.
 - ALL HEADERS TO HAVE (1) 2x4 OR 2x6 JACK EACH END, UNLESS OTHERWISE NOTED.
 - ALL EXTERIOR WALLS TO BE 4" AND ALL INTERIOR WALLS TO BE 3 1/2", UNLESS OTHERWISE NOTED.
 - HATCHED AREAS INDICATE DROPPED CEILINGS. ALL DROPPED CEILINGS ARE 12" UNLESS OTHERWISE NOTED.
 - SEE "BRACED WALL PANEL DETAIL SHEET" FOR SPECIAL WALL FRAMING LOCATIONS AND HEADER SIZES, IF APPLICABLE.
 - SEE STANDARD DETAIL CATEGORY "IT" SHEET(S) FOR INTERIOR TRIM DETAILS.
 - SEE ARCHITECTURAL DETAIL SHEET "AD" FOR HOUSE SPECIFIC INTERIOR TRIM OPTION TABLE.
 - ALL WINDOWS HAVE 7'-0 1/2" HEADER HEIGHT UNLESS OTHERWISE NOTED.

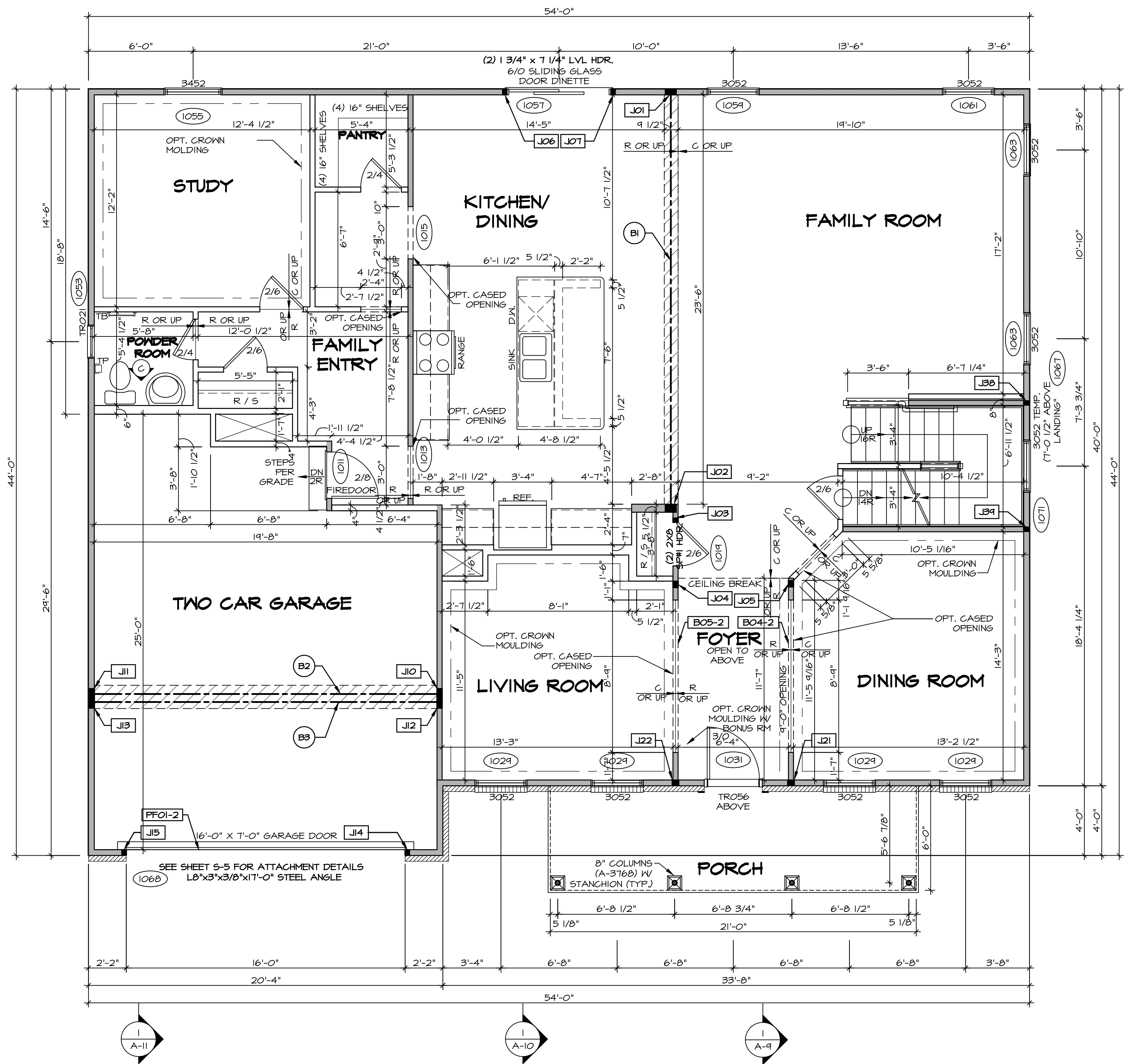
- GYPSUM NOTES**
- AT GARAGE:
GYPSUM BOARD AT COMMON WALLS, CEILING, BEAM WRAPS AND SUPPORTS PER STANDARD DETAIL FA-1(b) FIRE ASSEMBLIES OR AS REQUIRED BY LOCAL CODE.
- AT STAIRS:
1/2" GYPSUM BOARD AT UNDERSIDE OF STAIRS AND WALLS IN CLOSET

BASEMENT JACK SCHEDULE

IDENTIFIER	DESCRIPTION	OPTIONS	ENG. NUM.	REMARKS
J01	JACK - 2x4 SPF STUD GRADE		B10	
J02	JACK - 2x4 SPF STUD GRADE		B22	

SHEET NO. A-6	MODEL NORMANDY DRAWING TITLE BASEMENT FLOOR PLAN OPTION DESCRIPTION 34	SET NO. NRM00 VERSION 01 DRAWN BY SGA DATE: 6/29/15 OPTION	REV. NO. DATE DESCRIPTION REMARKS 1 08/07/16 N.E. - DRAWING ALIGNMENT 2 11/05/16 T.M. - STANDARD DETAILS 3.0 3 4/20/17 S.F.K. - ADDED BASEMENT FLOOR JACK SCHEDULE
NVR, Inc. Architectural Services 5285 Westover Drive Frederick, MD 21703			
NVR, Inc., owner, expressly reserves its copyright in the drawings and plans. These plans are not to be reproduced, changed, copied, or otherwise used without the written consent of NVR, Inc.			
C:\NVR\Solves\NORMANDY_NRM00_01\DCI-CH-MZ28\1032358\Sheet\Lot_Specific\34_A-6_BSMT_LS.dwg 11/28/18 - 1:46 pm			

BASEMENT FLOOR PLAN
 SCALE: 1/4" = 1'-0"



FIRST FLOOR PLAN
SCALE: 1/4" = 1'-0"

LVL PLY TO PLY FASTENING SCHEDULE: (WHERE APPLICABLE BASED ON LVL USAGE)

1A - (2) PLY UP TO AND INCLUDING 11 7/8" TALL; FASTEN PLYS W/ (2) ROWS 16D NAILS AT 12" O.C.
 2A - (2) PLY 14" TO AND 18" TALL (INCLUSIVE); FASTEN PLYS W/ (3) ROWS 16D NAILS AT 12" O.C.
 3A - (2) PLY 20" TALL AND OVER; FASTEN PLYS W/ (4) ROWS 16D NAILS AT 12" O.C.
 4A - (3) PLY UP TO AND INCLUDING 11 7/8" TALL; FASTEN PLYS W/ (2) ROWS 16D NAILS AT 12" O.C. FROM EACH SIDE
 5A - (3) PLY 14" TO AND 18" TALL (INCLUSIVE); FASTEN PLYS W/ (3) ROWS 16D NAILS AT 12" O.C. FROM EACH SIDE
 6A - (3) PLY 20" TALL AND OVER; FASTEN PLYS W/ (4) ROWS 16D NAILS AT 12" O.C. FROM EACH SIDE
 7A - (4) PLY (ALL SIZES); FASTEN PLYS W/ (2) ROWS 1/2" DIAMETER A307 BOLTS AT 24" O.C. SEE SHOP DRAWING FOR ADDITIONAL INFORMATION.

FIELD INSTALLED FIRST FLOOR BEAM/HEADER SCHEDULE

IDENTIFIER	DESCRIPTION	LENGTH	OPTIONS	ENG. NUM.	REMARKS
B04-2	LVL - 11-14	11'-4 1/16"	SRM, SQK, SQL, ELA, ELK	1017	1A
B05-2	LVL - 11-14	11'-8 1/2"	SRM, SQK, SQL, ELA, ELK	1017	1A
B1	BEAM STEEL - W12X35	24'-2"		1021	
B2	BEAM STEEL - W12X26	20'-2 1/2"		1023	
B3	BEAM STEEL - W12X22	20'-2 1/2"	EVA	1025	
PFO1-2	LVL - 11-04	20'-0"	GCB	1043	PORTAL FRAME, 1A

FIRST FLOOR JACK SCHEDULE

IDENTIFIER	DESCRIPTION	OPTIONS	ENG. NUM.	REMARKS
J01	JACK - (5) 2X4 SPF#1		1021	
J02	JACK - (5) 2X6 SPF#1		1021	
J03	JACK - (2) 2X4 SPF STUD GRADE		1019	
J04	JACK - (3) 2X4 SPF STUD GRADE		1017	
J05	JACK - (3) 2X4 SPF STUD GRADE		1017	
J06	JACK - (2) 2X4 SPF STUD GRADE		1057	
J07	JACK - (2) 2X4 SPF STUD GRADE		1057	
J10	JACK - (5) 2X4 SPF#1		1023	
J11	JACK - (3) 2X4 SPF#1	GCB	1023	
J12	JACK - (4) 2X4 SPF STUD GRADE	EVA	1025	
J13	JACK - (4) 2X4 SPF STUD GRADE	EVA, GCB	1025	
J14	JACK - (2) 2X4 SPF STUD GRADE	GCB, GCF	1043	
J15	JACK - (2) 2X4 SPF STUD GRADE	GCB, GCF	1043	
J19	JACK - (2) 2X4 SPF STUD GRADE		1043	
J21	JACK - (3) 2X4 SPF STUD GRADE	SRM, SQK, SQL, ELA, ELB, ELK	1017	
J22	JACK - (3) 2X4 SPF STUD GRADE	SRM, SQK, SQL, ELA, ELB, ELK	1017	
J30	JACK - (2) 2X4 SPF STUD GRADE		1007	
J34	JACK - (2) 2X4 SPF STUD GRADE		1007	

LEGEND

- BEARING WALL
- NON BEARING WALL
- INDICATES BEARING FROM POINT-LOAD ABOVE
- JACKS
- BEAM/HEADER
- PAD FOOTING
- STEEL COLUMN
- PORTAL FRAME
- JOIST/TRUSS
- LVL
- ENGINEERING PAGE NUMBER

SEE FC DETAILS FOR FRAMING CONNECTORS

- FLOOR PLAN NOTES** RYAN
- ALL HEADERS ARE (2) 2x6 w/ 2x4 WALLS OR (3) 2x6 w/ 2x6 WALLS, UNLESS OTHERWISE NOTED.
 - ALL HEADERS TO HAVE (1) 2x4 OR 2x6 JACK AND KING STUD EACH END, UNLESS OTHERWISE NOTED.
 - ALL EXTERIOR WALLS TO BE 4" W/ OSB OR 3 1/2" W/ T-PLY; ALL INTERIOR WALLS TO BE 3 1/2", UNLESS OTHERWISE NOTED.
 - HATCHED AREAS INDICATE DROPPED CEILING. ALL DROPPED CEILING ARE 12" UNLESS OTHERWISE NOTED.
 - SEE "BRACED WALL PANEL DETAIL SHEET" FOR SPECIAL WALL FRAMING LOCATIONS AND HEADER SIZES, IF APPLICABLE.
 - SEE STANDARD DETAIL CATEGORY "IT" SHEET(S) FOR INTERIOR TRIM DETAILS.
 - SEE ARCHITECTURAL DETAIL SHEET "AD" FOR HOUSE SPECIFIC INTERIOR TRIM OPTION TABLE.
 - ALL WINDOWS HAVE 7'-0 1/2" HEADER HEIGHT UNLESS OTHERWISE NOTED.
 - ALL HEADERS IN NON-BEARING WALLS SHALL BE A SINGLE FLAT 2X4 OR 2X6 ATTACHED TO CRIPPLES ABOVE, UNLESS OTHERWISE NOTED.

- GYPSUM NOTES** RYAN
- AT GARAGE:**
 GYPSUM BOARD AT COMMON WALLS, CEILING, BEAM WRAPS AND SUPPORTS PER STANDARD DETAIL FA-10b FIRE ASSEMBLIES OR AS REQUIRED BY LOCAL CODE.
- AT STAIRS:**
 1/2" GYPSUM BOARD AT UNDERSIDE OF STAIRS AND WALLS IN CLOSET

REVISIONS

REV. NO.	DATE	DESCRIPTION
1	08/07/16	NL - DRAWING ALIGNMENT
2	10/05/16	TM - STANDARD DETAILS 3.0
3	07/17/17	SL5 - T-PLY CONVERSION PROJECT

MODEL
 NRM000
 VERSION 01
 DRAWN BY SGA
 DATE: 6/29/15
 OPTION

DRAWING TITLE
 FIRST FLOOR PLAN

OPTION DESCRIPTION

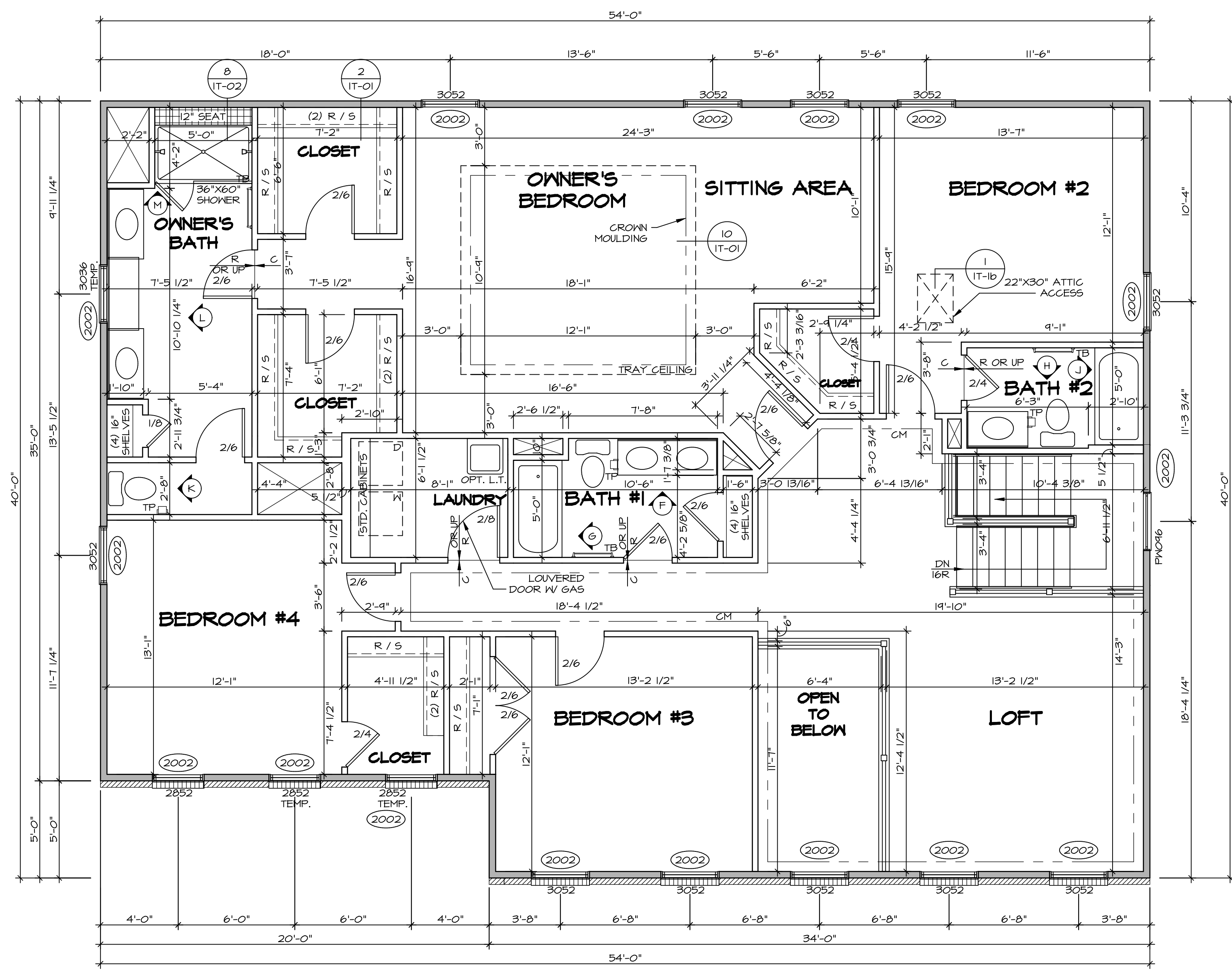
SHEET NO.
 A-7

35

NVR
 NVR, Inc.
 Architectural Services
 Architects
 5285 Westpark Drive
 Frederick, MD 21703

NVR, Inc., owner, expressly disclaims any copyright interest in the drawings, plans, specifications, or other documents prepared by NVR, Inc. for the project. These drawings are not to be reproduced, changed, copied, or otherwise used without the written consent of NVR, Inc.

C:\NVR\Solves\NORMANDY_ARCH00_01\DCI-CH-W228\10325538\Sheet\Lot_Specific\35_A-7_Plan1_LS.dwg 11/28/18 - 1:47 pm



LEGEND

- BEARING WALL
- NON BEARING WALL
- INDICATES BEARING FROM POINT-LOAD ABOVE JACKS
- BEAM/HEADER
- PAD FOOTING
- STEEL COLUMN
- PORTAL FRAME
- JOIST/TRUSS
- LVL
- ENGINEERING PAGE NUMBER

SEE FC DETAILS FOR FRAMING CONNECTORS

- FLOOR PLAN NOTES** RYAN
- ALL HEADERS ARE (2) 2x6 w/ 2x4 WALLS OR (3) 2x6 w/ 2x6 WALLS, UNLESS OTHERWISE NOTED.
 - ALL HEADERS TO HAVE (1) 2x4 OR 2x6 JACK AND KING STUD EACH END, UNLESS OTHERWISE NOTED.
 - ALL EXTERIOR WALLS TO BE 4" w/ OSB OR 3 1/2" w/ T-PLY, ALL INTERIOR WALLS TO BE 3 1/2", UNLESS OTHERWISE NOTED.
 - HATCHED AREAS INDICATE DROPPED CEILINGS. ALL DROPPED CEILINGS ARE 12" UNLESS OTHERWISE NOTED.
 - SEE "BRACED WALL PANEL DETAIL SHEET" FOR SPECIAL WALL FRAMING LOCATIONS AND HEADER SIZES, IF APPLICABLE.
 - SEE STANDARD DETAIL CATEGORY "IT" SHEET(S) FOR INTERIOR TRIM DETAILS.
 - SEE ARCHITECTURAL DETAIL SHEET "AD" FOR HOUSE SPECIFIC INTERIOR TRIM OPTION TABLE.
 - ALL WINDOWS HAVE 7'-0 1/2" HEADER HEIGHT UNLESS OTHERWISE NOTED.
 - ALL HEADERS IN NON-BEARING WALLS SHALL BE A SINGLE FLAT 2x4 OR 2x6 ATTACHED TO GRIFFLES ABOVE, UNLESS OTHERWISE NOTED.

SECOND FLOOR JACK SCHEDULE

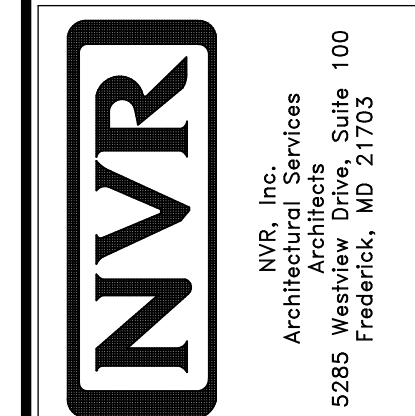
IDENTIFIER	DESCRIPTION	OPTIONS	ENG. NUM.	REMARKS

SECOND FLOOR PLAN
SCALE: 1/4" = 1'-0"

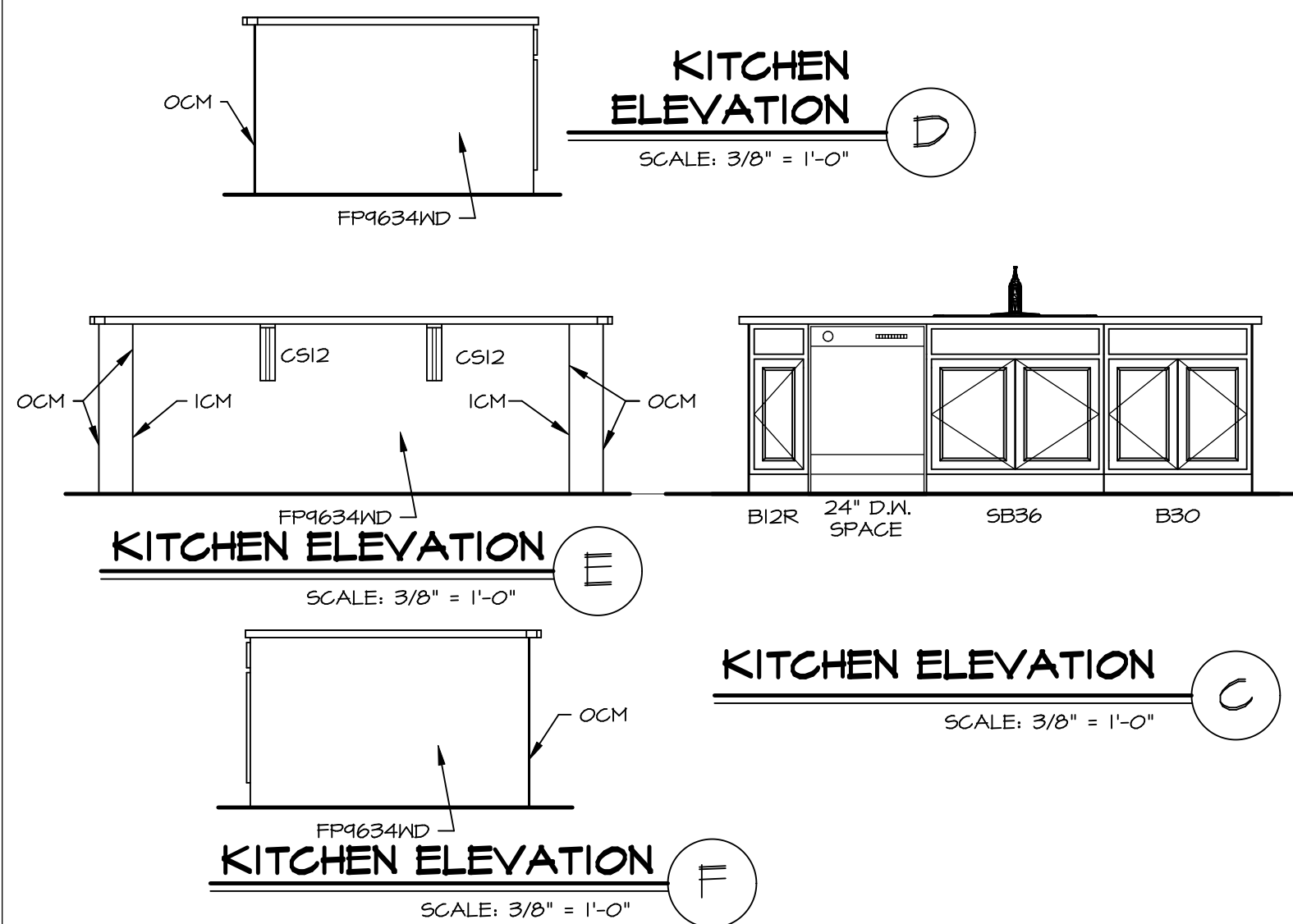
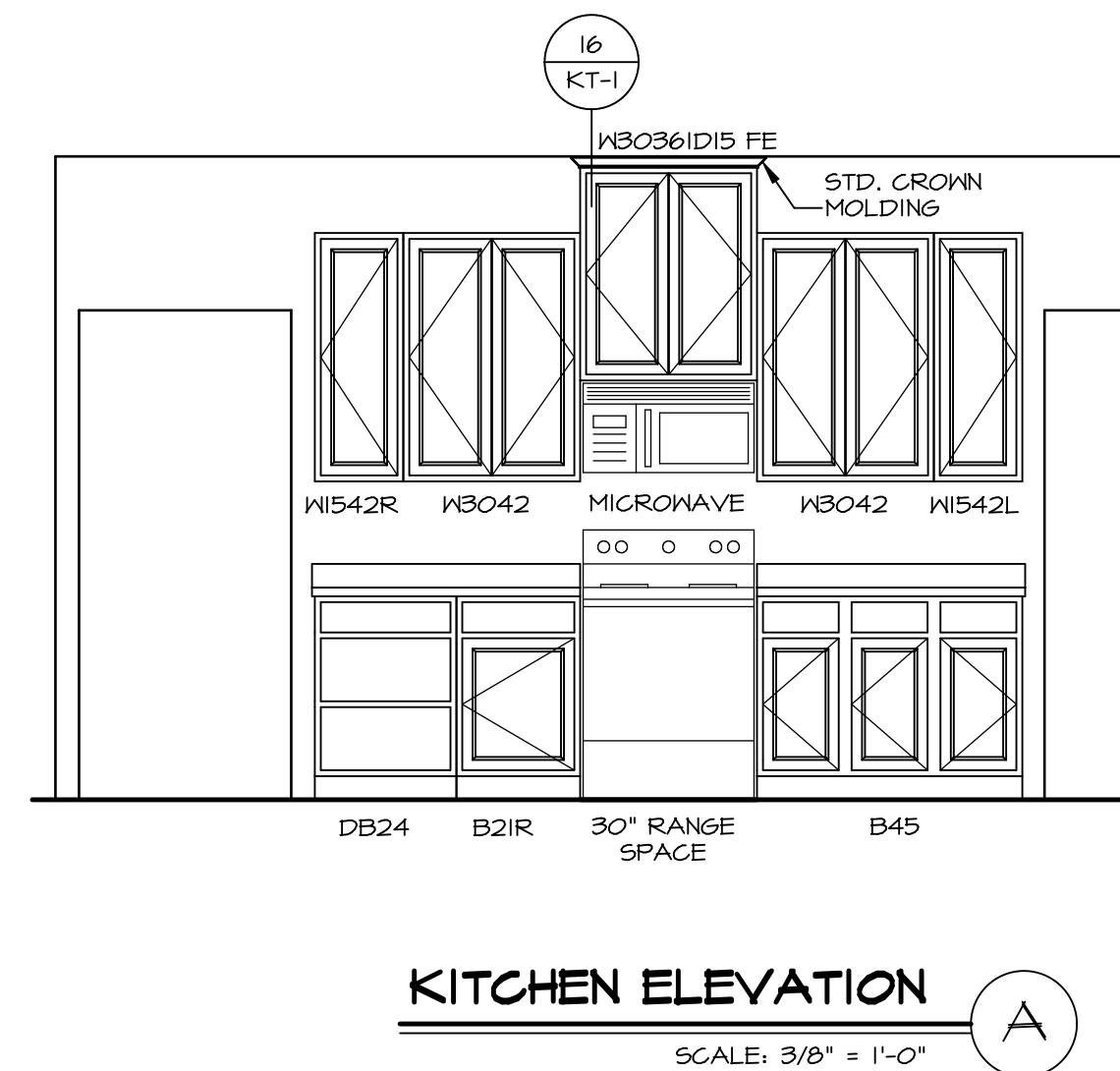
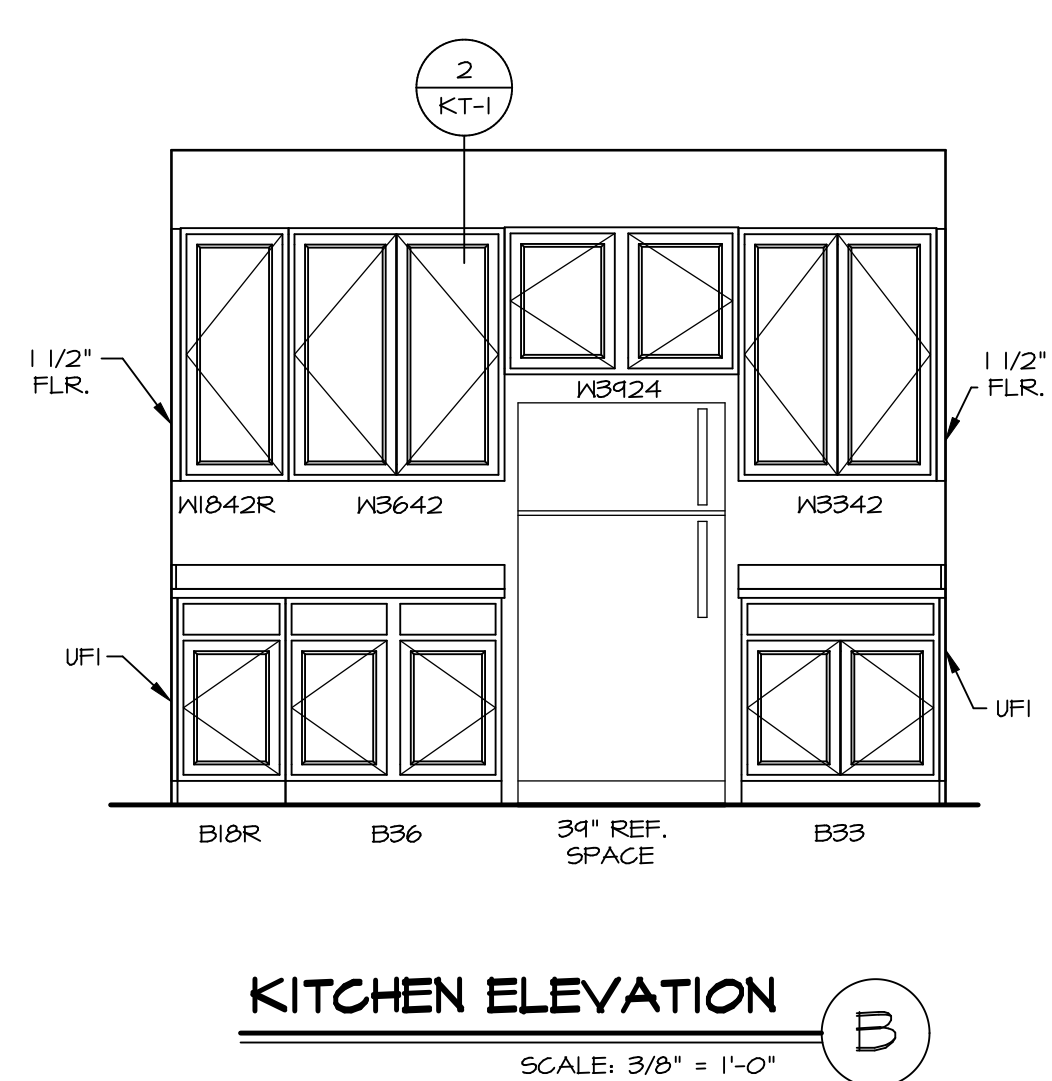
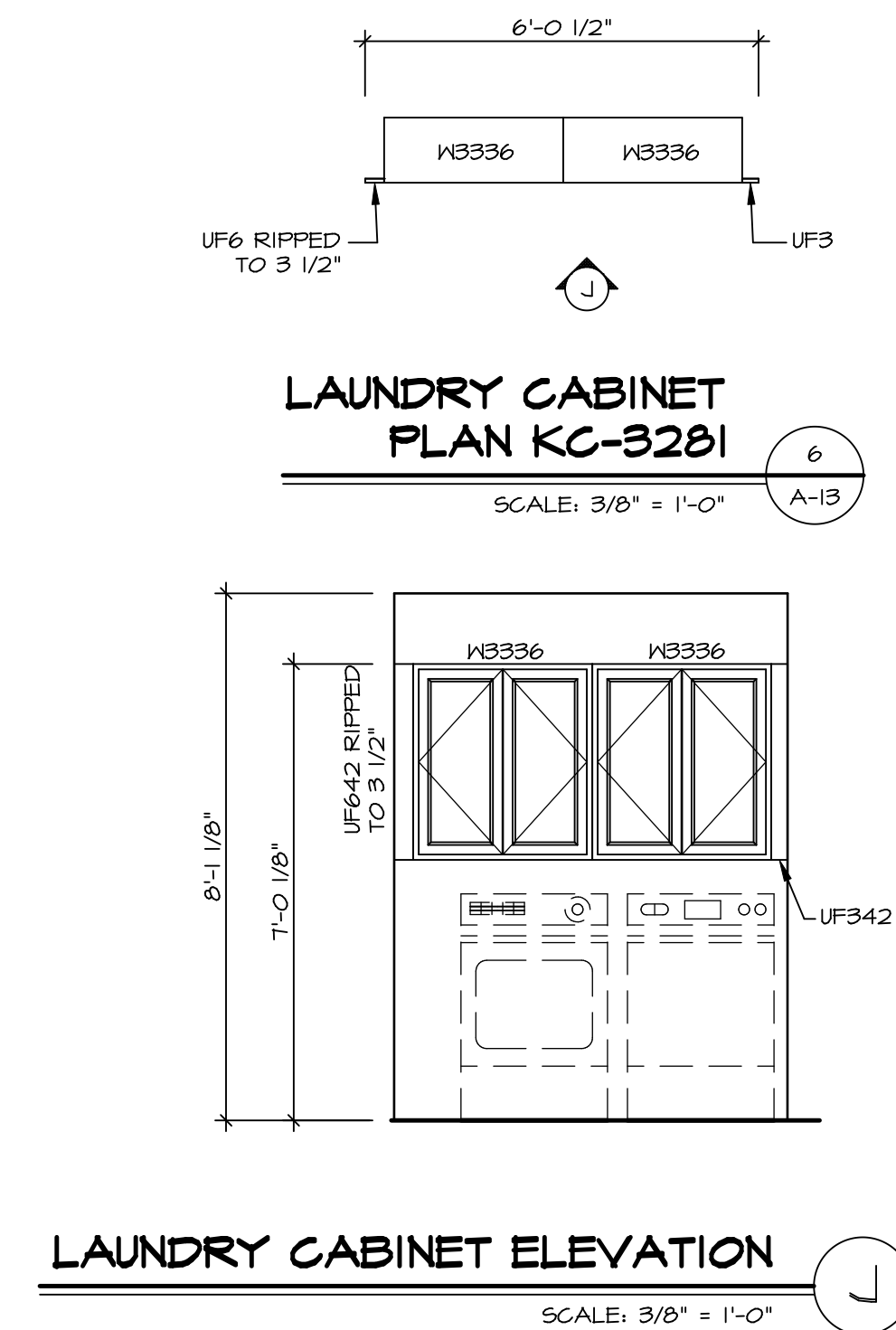
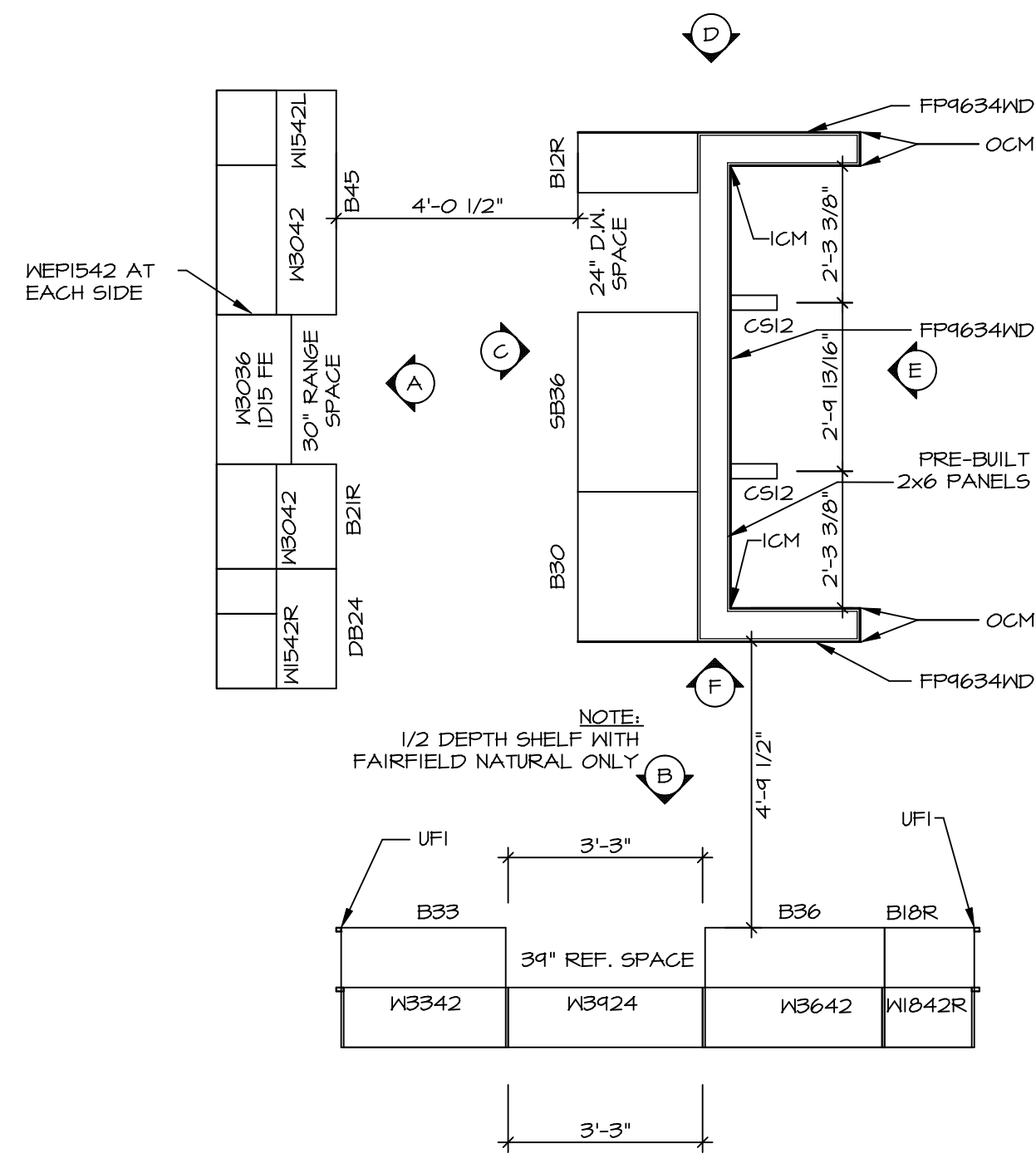
REMARKS

REV. NO.	DATE	DESCRIPTION
1	08/07/16	NL - DRAWING ALIGNMENT
2	10/05/16	TH - STANDARD DETAILS 3.0
3	07/17/17	SLS - T-PLY CONVERSION PROJECT

NVR, Inc., owner, expressly reserves its copyright in these plans. These plans are not to be reproduced, changed, copied, or otherwise used in any way without the written consent of NVR, Inc.



MODEL	NORMANDY
DRAWING TITLE	SECOND FLOOR PLAN
OPTION DESCRIPTION	
SET NO.	NRM00
VERSION	01
DRAWN BY	SGA
DATE	6/29/15
OPTION	



REV. NO.	DATE	REMARKS
1	11/05/16	TRV - STANDARD DETAILS 5.0

SET NO. NRM00
 VERSION 01
 DRAWN BY RJC
 DATE: 6/29/15
 OPTION

NORMANDY
 DRAWING TITLE
 KITCHEN LAYOUT
 OPTION DESCRIPTION

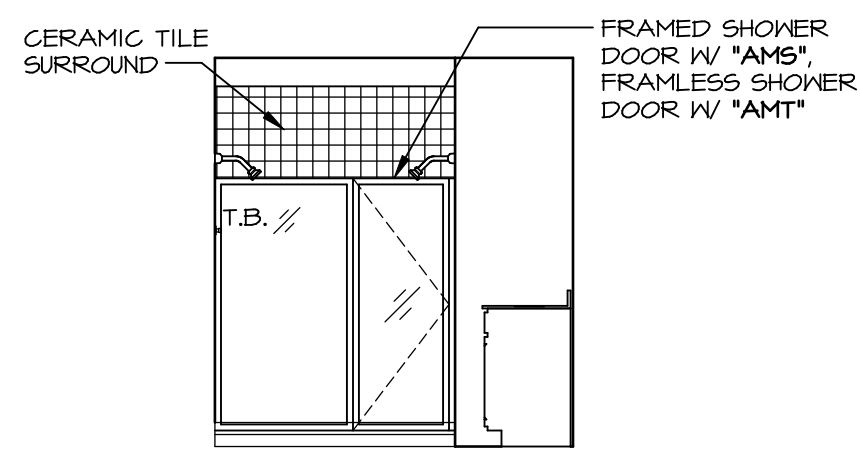
A-13
 SHEET NO.

46

NVR, Inc., owner, expressly
 reserves its copyright and
 all other intellectual property
 rights in these drawings and
 plans. These plans are not to be
 reproduced, changed, copied in
 any way, or used for any other
 project without the written
 consent of NVR, Inc.

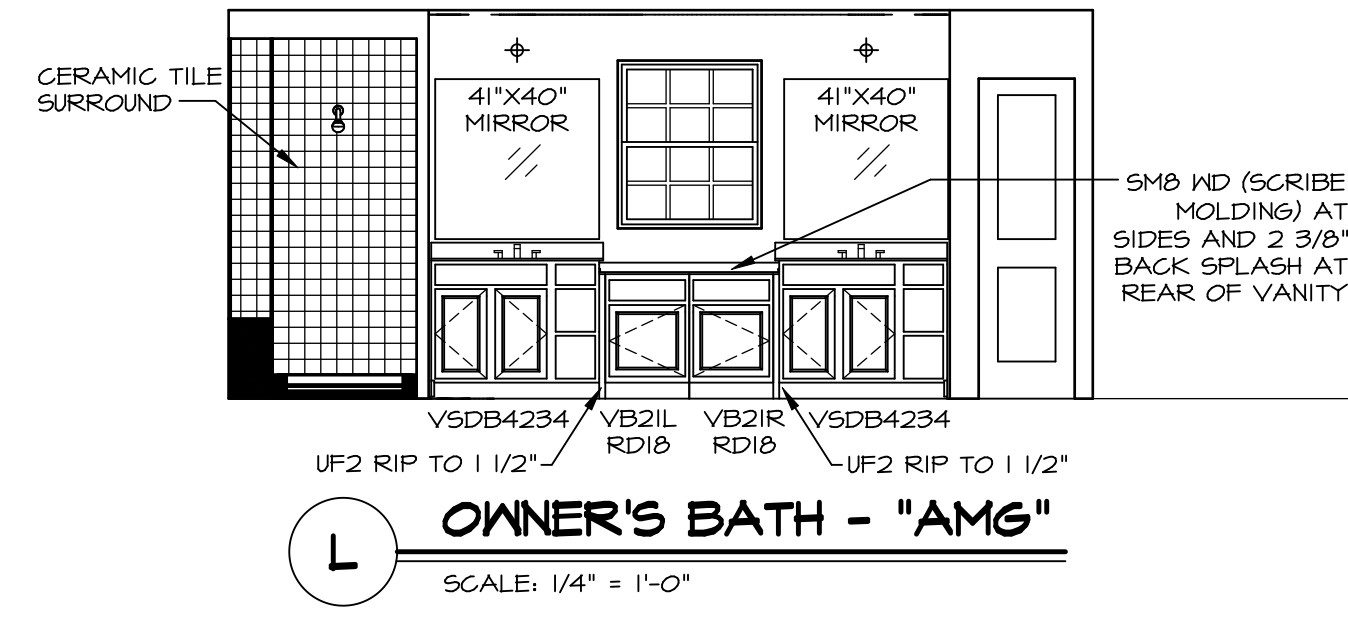
NVR
 NVR, Inc.
 Architectural Services
 Architects
 5285 Westover Hills
 Frederick, MD 21703

C:\NVR\Solves\NORMANDY_NRM00_01\DCI-CH-W228\1032358\Sheet\46 A-14 KIT_LS.dwg 11/28/18 1:47 pm

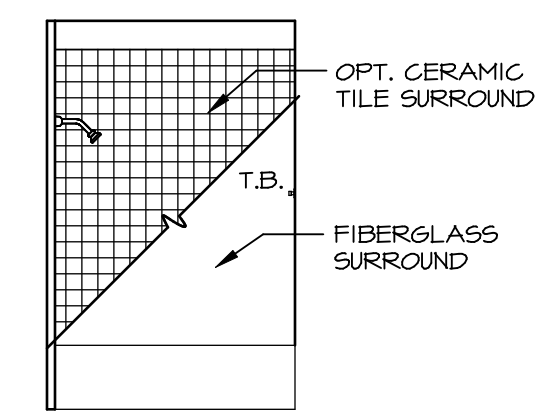


M OWNER'S BATH - "AMG"
SCALE: 1/4" = 1'-0"

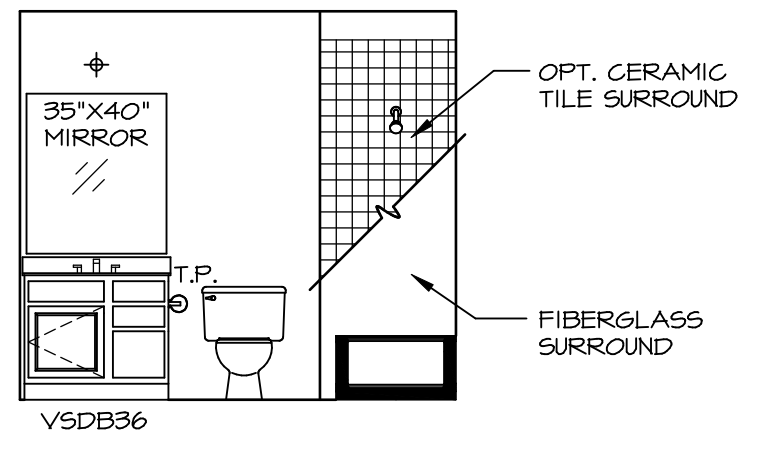
- NOTES:**
1. TEMPERED GLASS SHOWER ENCLOSURE WITH SWING DOOR OR OPTIONAL SLIDING DOOR BY DIVISION
 2. TUB ACCESS PANELS PROVIDED AS NEEDED, ALL MATERIALS BY DIVISION
 3. REFER TO SHEET (IT-2) FOR TUB AND SHOWER DETAILS.
 4. ALL VSDB24-42 DRAWERS TO BE SET ON RIGHT HAND.
 5. BATH ELEVATIONS ARE SHOWN PER PLAN.



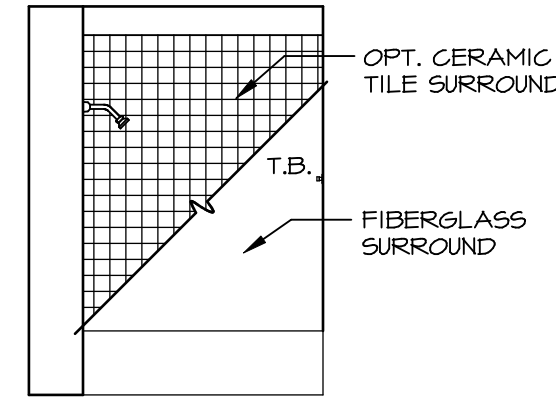
L OWNER'S BATH - "AMG"
SCALE: 1/4" = 1'-0"



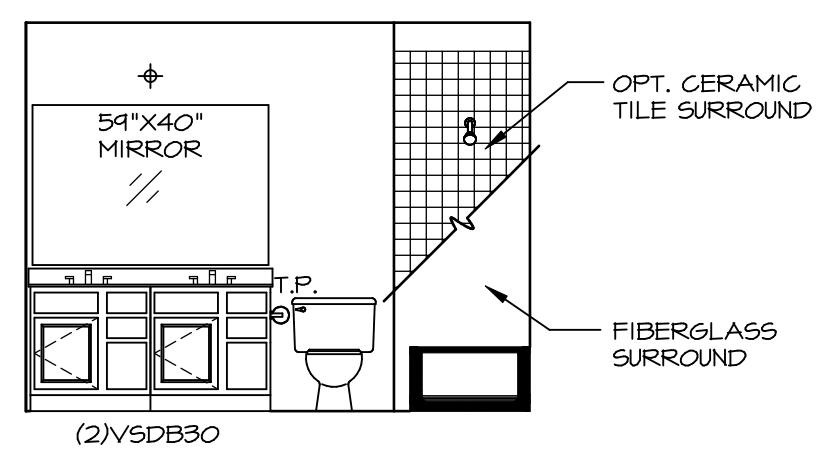
J BATH #2
SCALE: 1/4" = 1'-0"



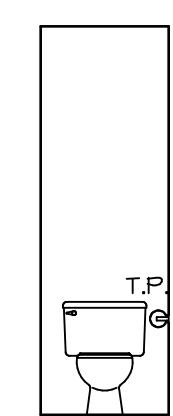
H BATH #2
SCALE: 1/4" = 1'-0"



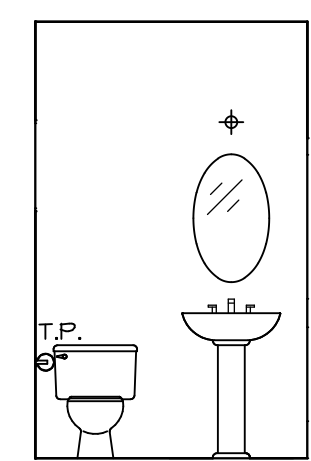
G BATH #1
SCALE: 1/4" = 1'-0"



F BATH #1
SCALE: 1/4" = 1'-0"



K OWNER'S BATH - "AMA" OR "AMG"
SCALE: 1/4" = 1'-0"



C POWDER ROOM - "MAS"
SCALE: 1/4" = 1'-0"

REV. NO.	DATE	REMARKS
1	08/07/16	N.L. - DRAWING ALIGNMENT
2	11/15/16	TRV. - STANDARD DETAILS 5.0

NVR, Inc., owner, expressly reserves its copyright in these plans. These plans are not to be reproduced, changed, copied, or otherwise used in any way without the written consent of NVR, Inc.

NVR
NVR, Inc.
Architectural Services
5285 Westpark Drive, Suite 100
Frederick, MD 21703

MODEL	NORMANDY
DRAWING TITLE	BATH ELEVATIONS
OPTION DESCRIPTION	
SET NO.	NRM00
VERSION	01
DRAWN BY	SGA
DATE	5/29/15
OPTION	
SHEET NO.	A-14
	48