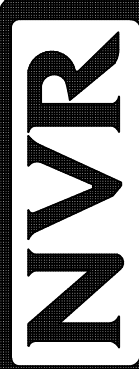
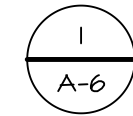
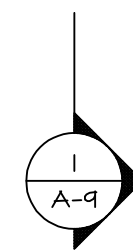
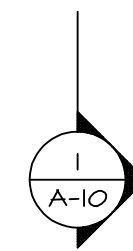
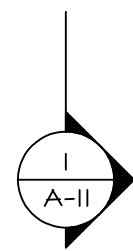
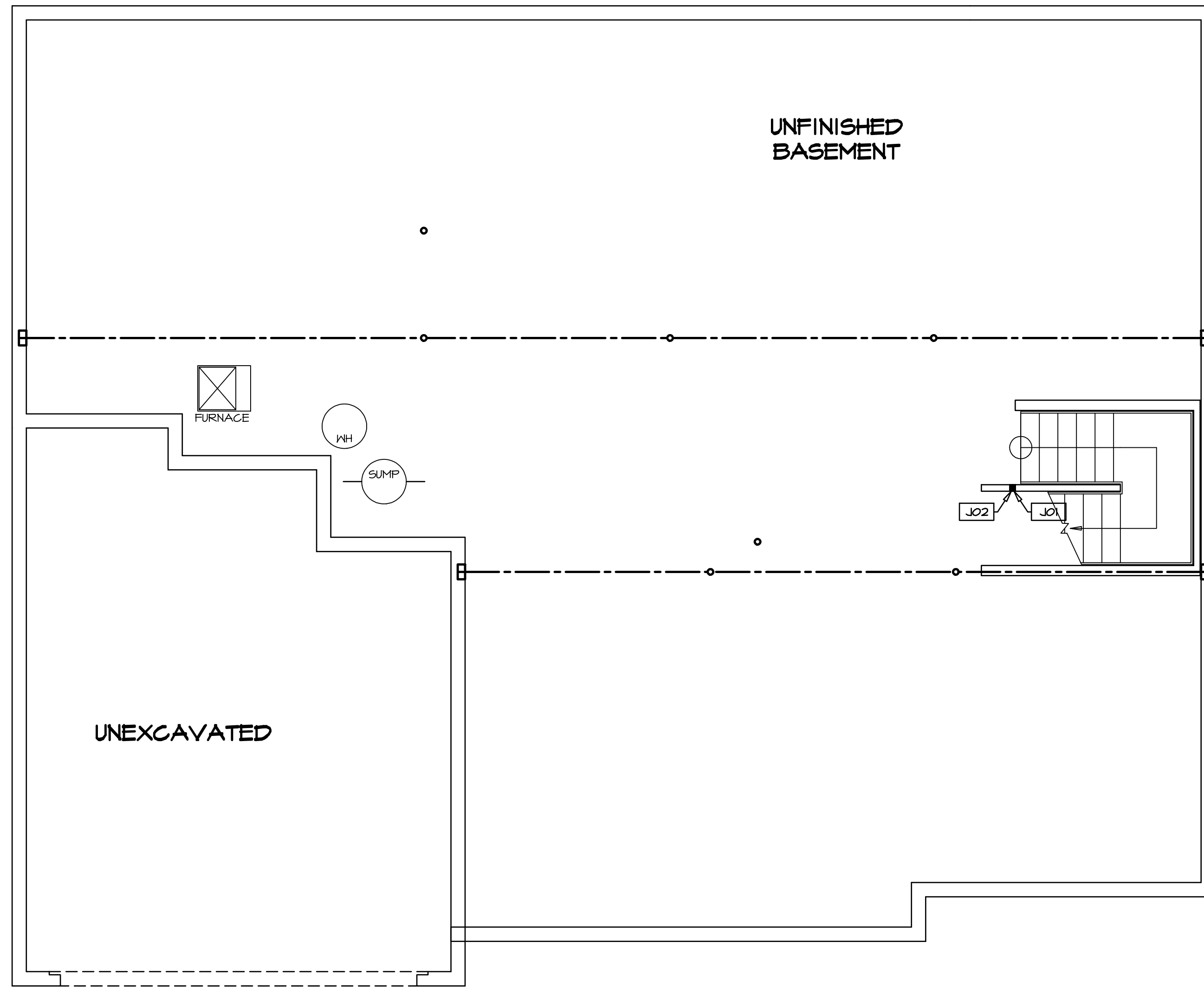


1
A-5 PLUMBING PLAN
SCALE: 1/4" = 1'-0"

SHEET NO. A-5	MODEL NORMANDY DRAWING TITLE PLUMBING PLAN OPTION DESCRIPTION 31	SET NO. NRM00 VERSION 01 DRAWN BY RJC DATE: 5/14/15 OPTION	 <p>NVR, Inc. Architectural Services Architects 21 Park Plaza, Suite A Frederick, MD 21702</p>	<p>NVR, Inc., owner, expressly reserves its copyright in these plans. These plans are not to be reproduced, changed, copied, or otherwise used in any way without the written consent of NVR, Inc.</p>	REV. NO. DATE	REMARKS
-------------------------	--	--	---	--	---------------	---------



BASEMENT FLOOR PLAN

SCALE: 1/4" = 1'-0"

LEGEND

	BEARING WALL
	NON BEARING WALL
	INDICATES BEARING FROM POINT-LOAD ABOVE JACKS
	JACKS
	BEAM/HEADER
	PAD FOOTING
	STEEL COLUMN
	PORTAL FRAME
	JOIST/TRUSS
	LVL
	ENGINEERING PAGE NUMBER

SEE FC DETAILS FOR FRAMING CONNECTORS

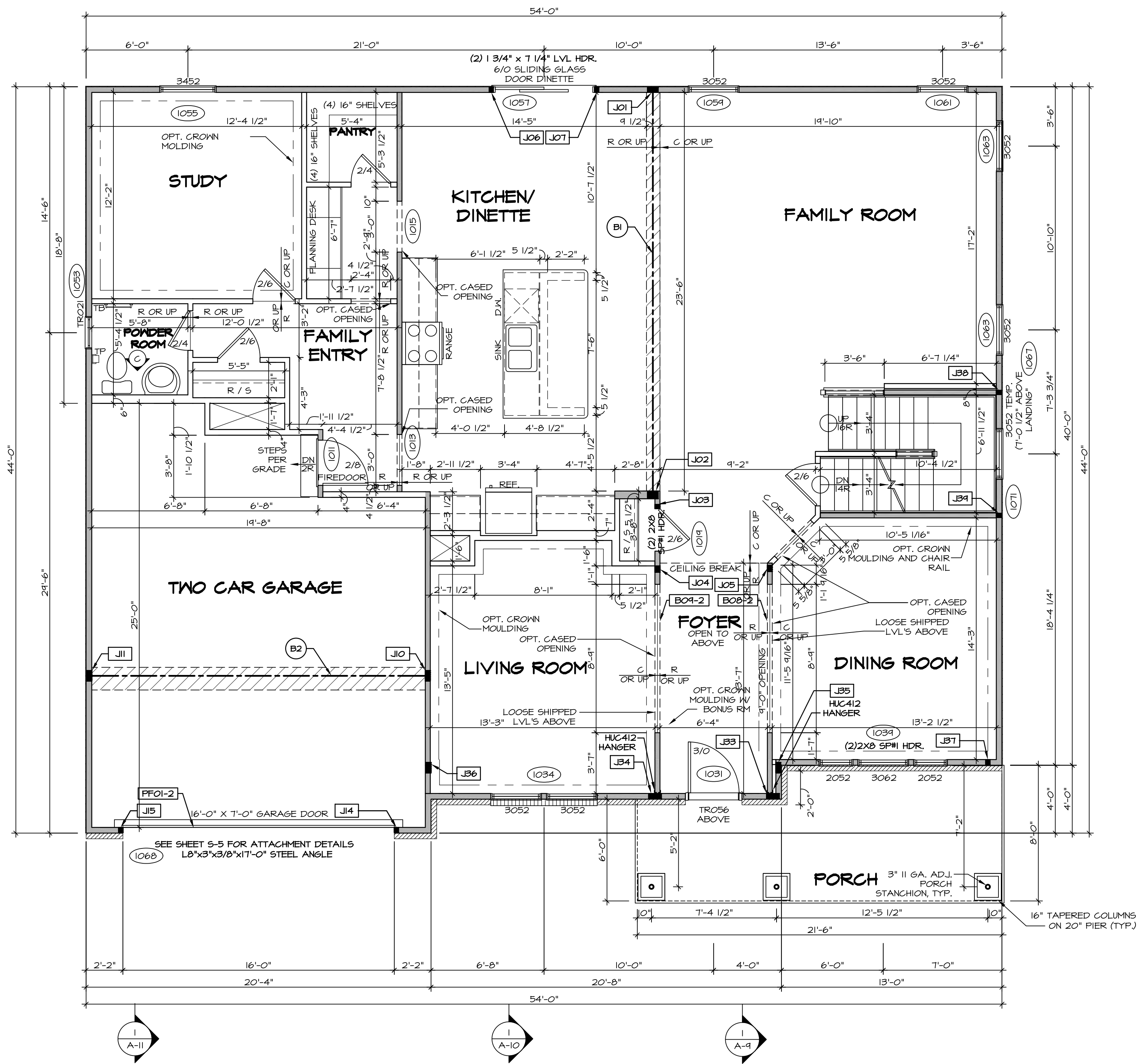
- FLOOR PLAN NOTES**
- ALL HEADERS ARE (2) 2x6 w/ 2x4 WALLS OR (3) 2x6 w/ 2x6 WALLS, UNLESS OTHERWISE NOTED.
 - ALL HEADERS TO HAVE (1) 2x4 OR 2x6 JACK EACH END, UNLESS OTHERWISE NOTED.
 - ALL EXTERIOR WALLS TO BE 4" AND ALL INTERIOR WALLS TO BE 3 1/2", UNLESS OTHERWISE NOTED.
 - HATCHED AREAS INDICATE DROPPED CEILINGS. ALL DROPPED CEILINGS ARE 12" UNLESS OTHERWISE NOTED.
 - SEE "BRACED WALL PANEL DETAIL SHEET" FOR SPECIAL WALL FRAMING LOCATIONS AND HEADER SIZES, IF APPLICABLE.
 - SEE STANDARD DETAIL CATEGORY "IT" SHEET(S) FOR INTERIOR TRIM DETAILS.
 - SEE ARCHITECTURAL DETAIL SHEET "AD" FOR HOUSE SPECIFIC INTERIOR TRIM OPTION TABLE.
 - ALL WINDOWS HAVE 7'-0" 1/2" HEADER HEIGHT UNLESS OTHERWISE NOTED.

- GYPSUM NOTES**
- AT GARAGE:
GYPSUM BOARD AT COMMON WALLS, CEILING, BEAM WRAPS AND SUPPORTS PER STANDARD DETAIL FA-1(b) FIRE ASSEMBLIES OR AS REQUIRED BY LOCAL CODE.
- AT STAIRS:
1/2" GYPSUM BOARD AT UNDERSIDE OF STAIRS AND WALLS IN CLOSET

BASEMENT JACK SCHEDULE

IDENTIFIER	DESCRIPTION	OPTIONS	ENG. NUM.	REMARKS
JO1	JACK - 2x4 SFF STUD GRADE		B10	
JO2	JACK - 2x4 SFF STUD GRADE		B22	

<p>SHEET NO. A-6</p> <p>MODEL NORMANDY</p> <p>DRAWING TITLE BASEMENT FLOOR PLAN</p> <p>OPTION DESCRIPTION</p>	<p>SET NO. NRM00</p> <p>VERSION 01</p> <p>DRAWN BY SGA</p> <p>DATE: 6/29/15</p> <p>OPTION</p>	<p>REV. NO. DATE</p> <p>1 08/07/16</p> <p>2 10/15/16</p> <p>3 4/20/17</p>	<p>REMARKS</p> <p>N1 - DRAWING ALIGNMENT</p> <p>T1 - STANDARD DETAILS 3.0</p> <p>ADDED BASEMENT FLOOR PLAN JACK SCHEDULE</p>
<p>NVR NVR, Inc. Architectural Services Architects P.L.L.C. 21 Bay Center, Suite A Frederick, MD 21702</p>			
<p>NVR, Inc., owner, expressly reserves its copyright in the drawings and plans. These plans are not to be reproduced, changed, copied in any way, or otherwise used without the prior written consent of NVR, Inc.</p>			



FIRST FLOOR PLAN
SCALE: 1/4" = 1'-0"

LVL PLY TO PLY FASTENING SCHEDULE: (WHERE APPLICABLE BASED ON LVL USAGE)

1A - (2) PLY UP TO AND INCLUDING 11 7/8" TALL; FASTEN PLYS W/ (2) ROWS 16D NAILS AT 12" O.C.
 2A - (2) PLY 14" TO AND INCLUDING 18" TALL (INCLUSIVE); FASTEN PLYS W/ (3) ROWS 16D NAILS AT 12" O.C.
 3A - (2) PLY 20" TALL AND OVER; FASTEN PLYS W/ (4) ROWS 16D NAILS AT 12" O.C.
 4A - (3) PLY UP TO AND INCLUDING 11 7/8" TALL; FASTEN PLYS W/ (2) ROWS 16D NAILS AT 12" O.C. FROM EACH SIDE
 5A - (3) PLY 14" TO AND INCLUDING 18" TALL (INCLUSIVE); FASTEN PLYS W/ (3) ROWS 16D NAILS AT 12" O.C. FROM EACH SIDE
 6A - (3) PLY 20" TALL AND OVER; FASTEN PLYS W/ (4) ROWS 16D NAILS AT 12" O.C. FROM EACH SIDE
 7A - (4) PLY (ALL SIZES); FASTEN PLYS W/ (2) ROWS 1/2" DIAMETER A307 BOLTS AT 24" O.C. SEE SHOP DRAWING FOR ADDITIONAL INFORMATION.

FIELD INSTALLED FIRST FLOOR BEAM/HEADER SCHEDULE

IDENTIFIER	DESCRIPTION	LENGTH	OPTIONS	ENG. NUM.	REMARKS
B08-2	LVL - 11-14	13'-5 9/16"	ELL	1017	1A (FIELD INSTALLED)
B09-2	LVL - 11-14	13'-5"	ELL	1017	1A (FIELD INSTALLED)
B1	BEAM STEEL - W12X35	24'-2"		1021	
B2	BEAM STEEL - W12X26	20'-2 1/2"		1023	
PFO1-2	LVL - 11-04	20'-0"	GCB	1043	PORTAL FRAME, 1A

FIRST FLOOR JACK SCHEDULE

IDENTIFIER	DESCRIPTION	OPTIONS	ENG. NUM.	REMARKS
JO1	JACK - (5) 2X4 SP#1		1021	
JO2	JACK - (5) 2X6 SP#1		1021	
JO3	JACK - (2) 2X4 SP# STUD GRADE		1019	
JO4	JACK - (3) 2X4 SP# STUD GRADE		1017	
JO5	JACK - (3) 2X4 SP# STUD GRADE		1017	
JO6	JACK - (2) 2X4 SP# STUD GRADE		1057	
JO7	JACK - (2) 2X4 SP# STUD GRADE		1057	
JO8	JACK - (5) 2X4 SP#1		1023	
JO9	JACK - (5) 2X4 SP#1	GCB	1023	
JO10	JACK - (2) 2X4 SP# STUD GRADE	GCB, GCF	1043	
JO11	JACK - (2) 2X4 SP# STUD GRADE	GCB, GCF	1043	
JO12	JACK - (2) 2X4 SP# STUD GRADE	GCB, GCF	1043	
JO13	JACK - (2) 2X4 SP# STUD GRADE	GCB, GCF	1043	
JO14	JACK - (2) 2X4 SP# STUD GRADE	GCB, GCF	1043	
JO15	JACK - (6) 2X4 SP# STUD GRADE	ELL	1017	
JO16	JACK - (6) 2X4 SP# STUD GRADE	ELL	1017	
JO17	JACK - (5) 2X4 SP#1	ELL	2000	
JO18	JACK - (5) 2X4 SP#1	ELL	2000	
JO19	JACK - (2) 2X4 SP# STUD GRADE	ELL	1041	
JO20	JACK - (2) 2X4 SP# STUD GRADE	ELL	1007	
JO21	JACK - (2) 2X4 SP# STUD GRADE	ELL	1007	

LEGEND

- BEARING WALL
- NON BEARING WALL
- INDICATES BEARING FROM POINT-LOAD ABOVE
- JACKS
- BEAM/HEADER
- PAD FOOTING
- STEEL COLUMN
- PORTAL FRAME
- JOIST/TRUSS
- LVL
- ENGINEERING PAGE NUMBER

SEE FC DETAILS FOR FRAMING CONNECTORS

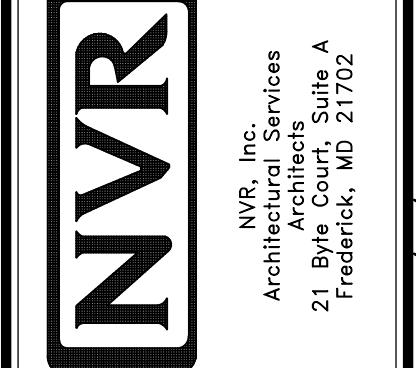
- FLOOR PLAN NOTES** RYAN
- ALL HEADERS ARE (2) 2x6 w/ 2x4 WALLS OR (3) 2x6 w/ 2x6 WALLS, UNLESS OTHERWISE NOTED.
 - ALL HEADERS TO HAVE (1) 2x4 OR 2x6 JACK AND KING STUD EACH END, UNLESS OTHERWISE NOTED.
 - ALL EXTERIOR WALLS TO BE 4" W/ OSB OR 3 1/2" W/ T-PLY. ALL INTERIOR WALLS TO BE 3 1/2", UNLESS OTHERWISE NOTED.
 - HATCHED AREAS INDICATE DROPPED CEILING. ALL DROPPED CEILING ARE 12" UNLESS OTHERWISE NOTED.
 - SEE "BRACED WALL PANEL DETAIL SHEET" FOR SPECIAL WALL FRAMING LOCATIONS AND HEADER SIZES, IF APPLICABLE.
 - SEE STANDARD DETAIL CATEGORY "IT" SHEET(S) FOR INTERIOR TRIM DETAILS.
 - SEE ARCHITECTURAL DETAIL SHEET "AD" FOR HOUSE SPECIFIC INTERIOR TRIM OPTION TABLE.
 - ALL WINDOWS HAVE 7'-0 1/2" HEADER HEIGHT UNLESS OTHERWISE NOTED.
 - ALL HEADERS IN NON-BEARING WALLS SHALL BE A SINGLE FLAT 2X4 OR 2X6 ATTACHED TO CRIPPLES ABOVE, UNLESS OTHERWISE NOTED.

- GYPSUM NOTES** RYAN
- AT GARAGE:**
 GYPSUM BOARD AT COMMON WALLS, CEILING, BEAM WRAPS AND SUPPORTS PER STANDARD DETAIL FA-10b FIRE ASSEMBLIES OR AS REQUIRED BY LOCAL CODE.
- AT STAIRS:**
 1/2" GYPSUM BOARD AT UNDERSIDE OF STAIRS AND WALLS IN CLOSET

REVISIONS

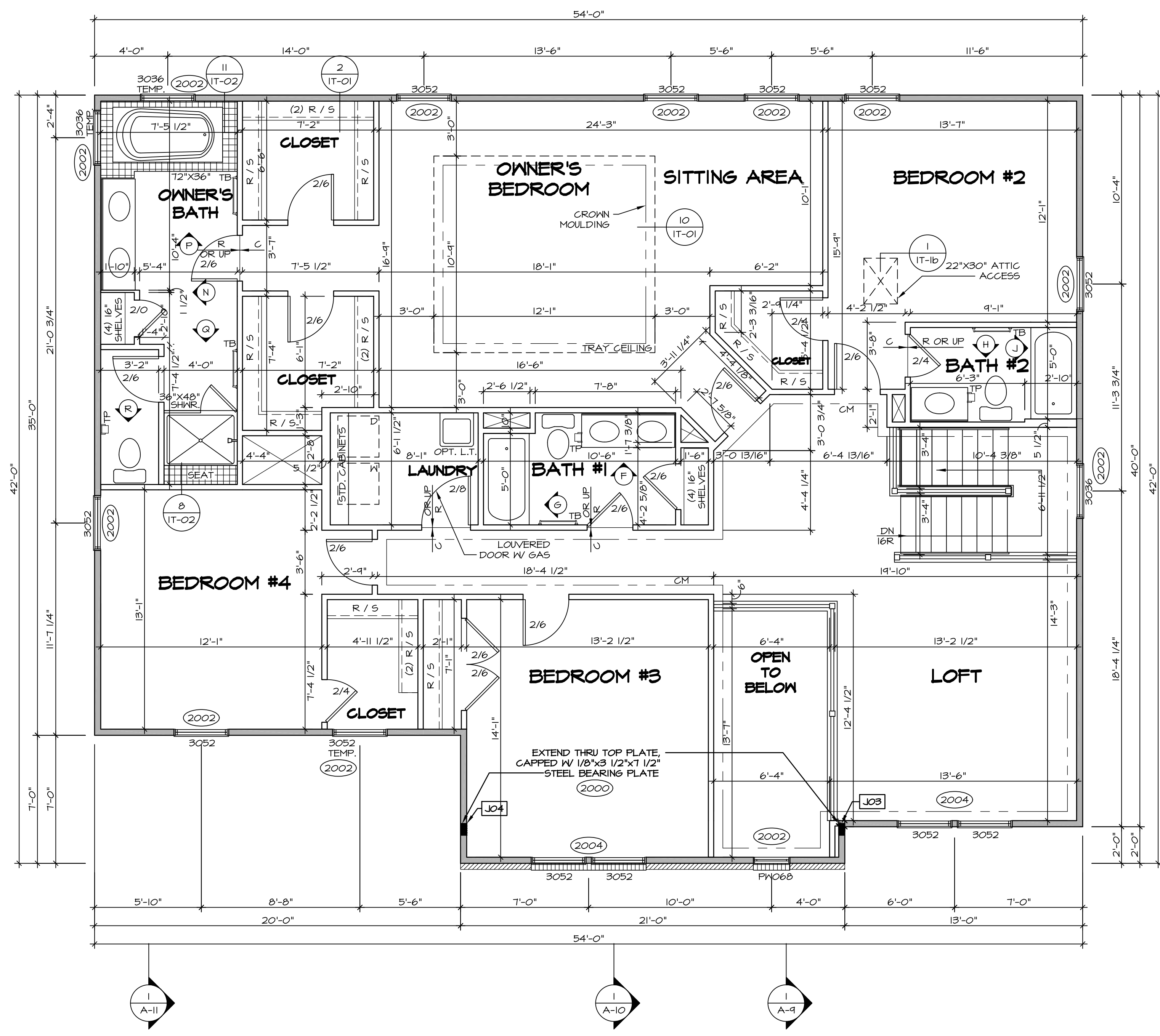
REV. NO.	DATE	DESCRIPTION
1	08/01/16	NL - DRAWING ALIGNMENT
2	10/05/16	TH - STANDARD DETAILS 3.0
3	07/17/17	SL5 - T-PLY CONVERSION PROJECT

NVR, Inc., owner, expressly reserves its common law copyright in these plans. These plans are not to be reproduced, changed, adapted, or otherwise used in any way without the prior written consent of NVR, Inc.



SET NO. NRM00
 VERSION 01
 DRAWN BY SGA
 DATE: 6/29/15
 OPTION

MODEL: NORMANDY
 DRAWING TITLE: FIRST FLOOR PLAN
 SHEET NO. A-7
 OPTION DESCRIPTION



SECOND FLOOR PLAN
SCALE: 1/4" = 1'-0"

LEGEND

- BEARING WALL
- NON BEARING WALL
- INDICATES BEARING FROM POINT-LOAD ABOVE
- JACKS
- BEAM/HEADER
- PAD FOOTING
- STEEL COLUMN
- PORTAL FRAME
- JOIST/TRUSS
- LVL
- ENGINEERING PAGE NUMBER

SEE FC DETAILS FOR FRAMING CONNECTORS

- FLOOR PLAN NOTES** RYAN
1. ALL HEADERS ARE (2) 2x6 w/ 2x4 WALLS OR (3) 2x6 w/ 2x6 WALLS, UNLESS OTHERWISE NOTED.
 2. ALL HEADERS TO HAVE (1) 2x4 OR 2x6 JACK AND KING STUD EACH END, UNLESS OTHERWISE NOTED.
 3. ALL EXTERIOR WALLS TO BE 4" w/ OSB OR 3 1/2" w/ T-PLY, ALL INTERIOR WALLS TO BE 3 1/2", UNLESS OTHERWISE NOTED.
 4. HATCHED AREAS INDICATE DROPPED CEILINGS. ALL DROPPED CEILINGS ARE 12" UNLESS OTHERWISE NOTED.
 5. SEE "BRACED WALL PANEL DETAIL SHEET" FOR SPECIAL WALL FRAMING LOCATIONS AND HEADER SIZES, IF APPLICABLE.
 6. SEE STANDARD DETAIL CATEGORY "IT" SHEET(S) FOR INTERIOR TRIM DETAILS.
 7. SEE ARCHITECTURAL DETAIL SHEET "AD" FOR HOUSE SPECIFIC INTERIOR TRIM OPTION TABLE.
 8. ALL WINDOWS HAVE 7'-0 1/2" HEADER HEIGHT UNLESS OTHERWISE NOTED.
 9. ALL HEADERS IN NON-BEARING WALLS SHALL BE A SINGLE FLAT 2x4 OR 2x6 ATTACHED TO GRIFFLES ABOVE, UNLESS OTHERWISE NOTED.

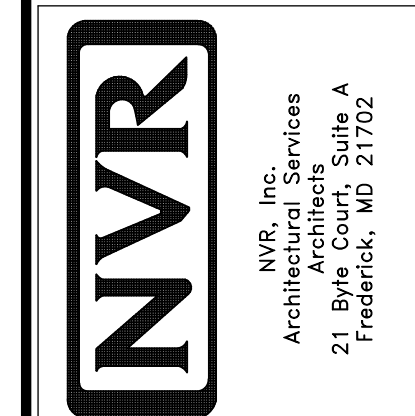
SECOND FLOOR JACK SCHEDULE

IDENTIFIER	DESCRIPTION	OPTIONS	ENG. NUM.	REMARKS
JO3	JACK - (5) 2X4 SPM	ELL	2000	
JO4	JACK - (5) 2X4 SPM	ELL	2000	

REMARKS

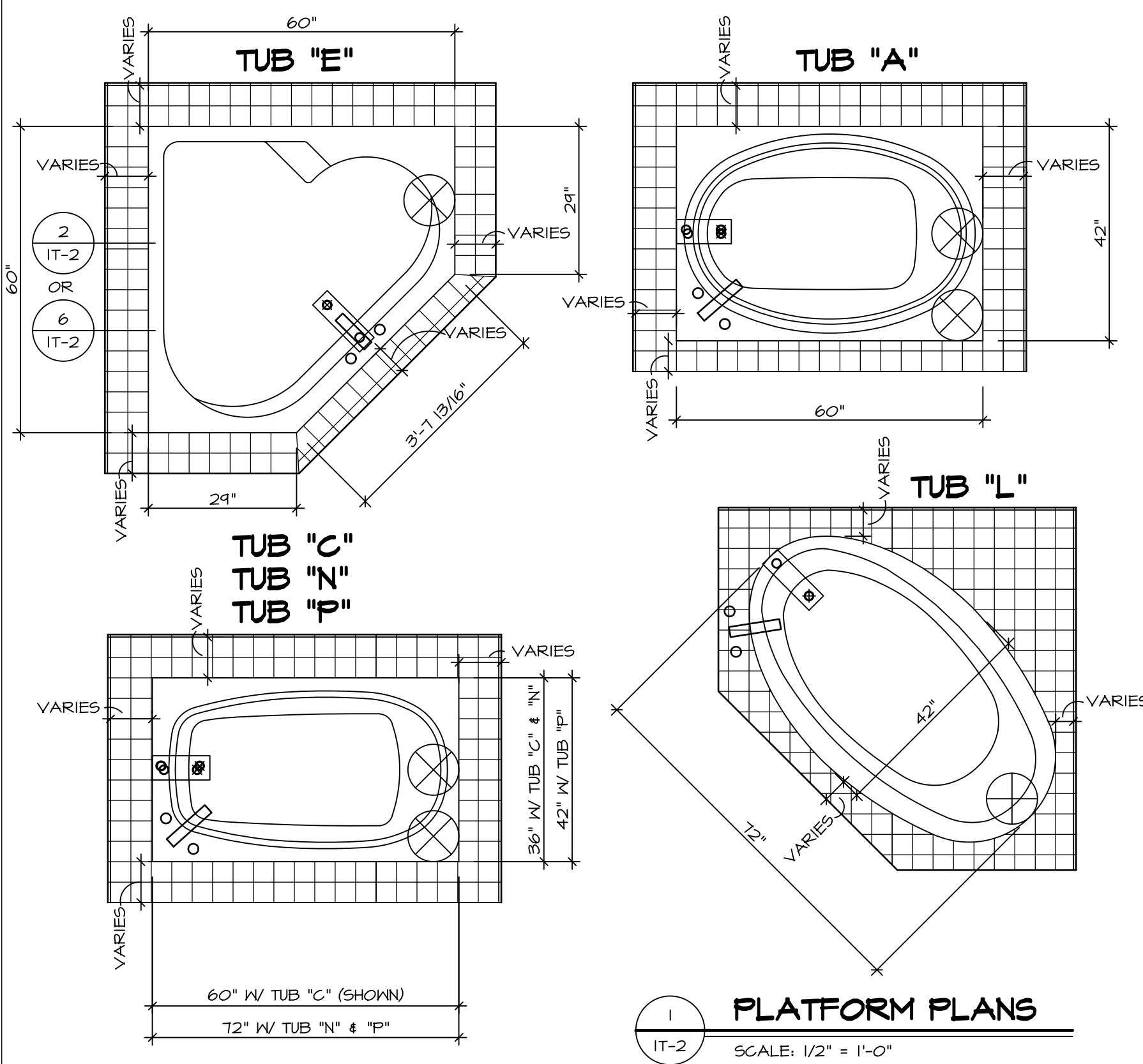
REV. NO.	DATE	DESCRIPTION
1	08/07/16	N - DRAWING ALIGNMENT
2	10/05/16	TH - STANDARD DETAILS 3.0
3	07/17/17	SLS - T-PLY CONVERSION PROJECT

NVR, Inc., owner, expressly reserves its copyright in these plans. These plans are not to be reproduced, changed, copied, or otherwise used in any way without the prior written consent of NVR, Inc.



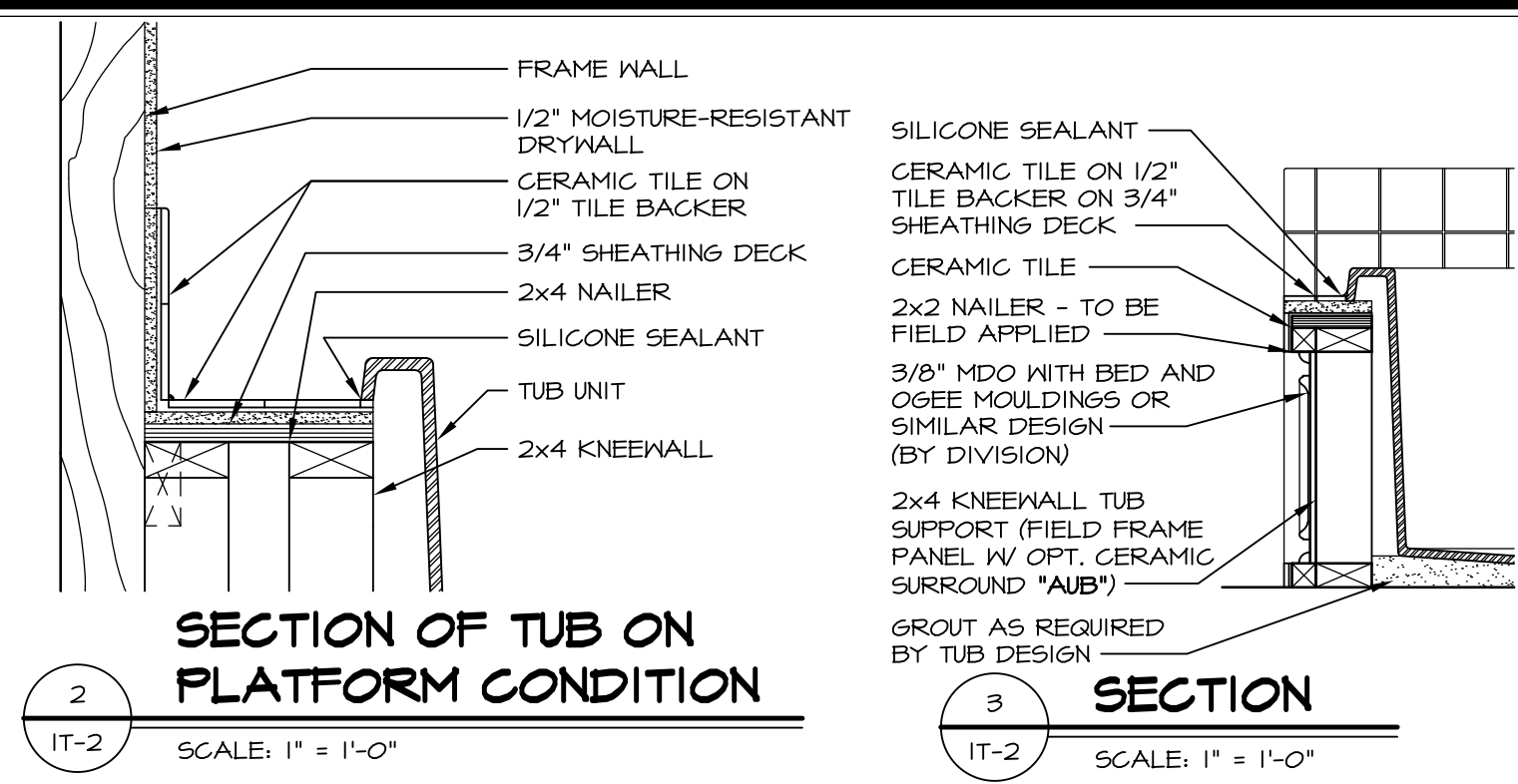
SET NO. NRM00
VERSION 01
DRAWN BY SGA
DATE: 6/29/15
OPTION

MODEL: NORMANDY
DRAWING TITLE: SECOND FLOOR PLAN
OPTION DESCRIPTION

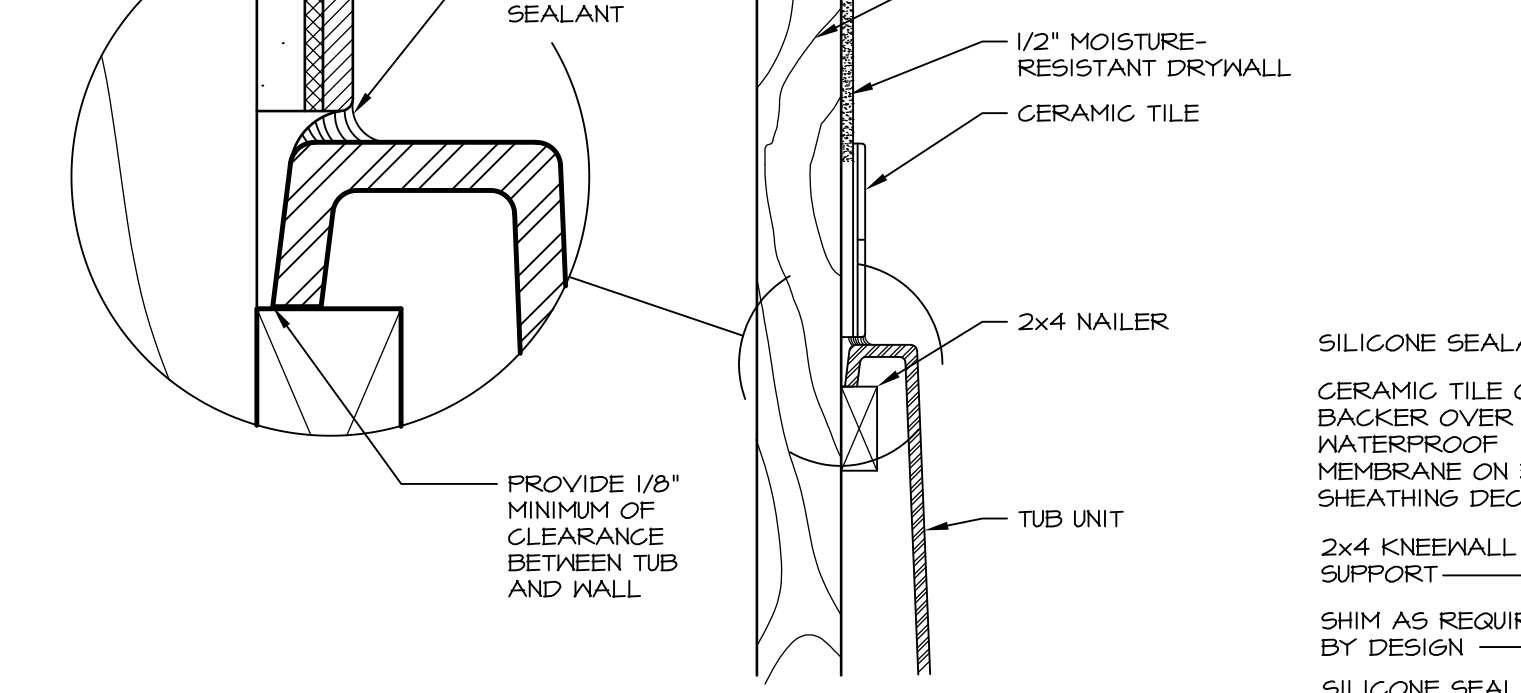


1 PLATFORM PLANS
SCALE: 1/2" = 1'-0"

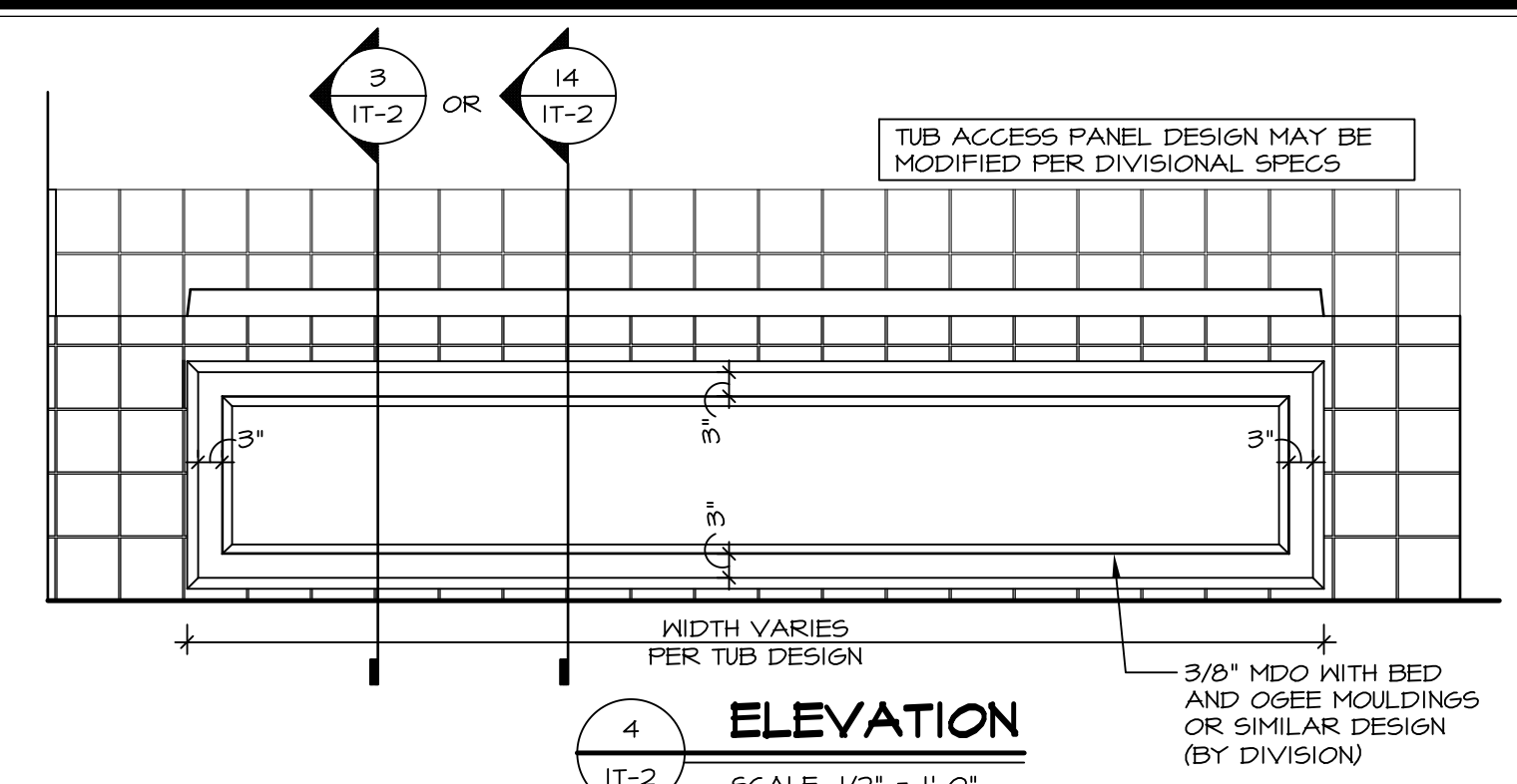
TUB	MANUF.	HEIGHT	WIDTH	LENGTH	TUB DECK PANEL HEIGHT
"A"	KOHLER/STERLING	18 3/4"	42"	60"	17 1/8"
"C"	KOHLER/STERLING	18 3/4"	36"	60"	17 1/8"
"E"	KOHLER/STERLING	19 1/2"	60"	60"	17 7/8"
"L"	KOHLER/STERLING	18 1/2"	42"	72"	16 7/8"
"N"	KOHLER/STERLING	18 3/4"	36"	72"	17 1/8"
"P"	KOHLER/STERLING	18 3/4"	42"	72"	17 1/8"



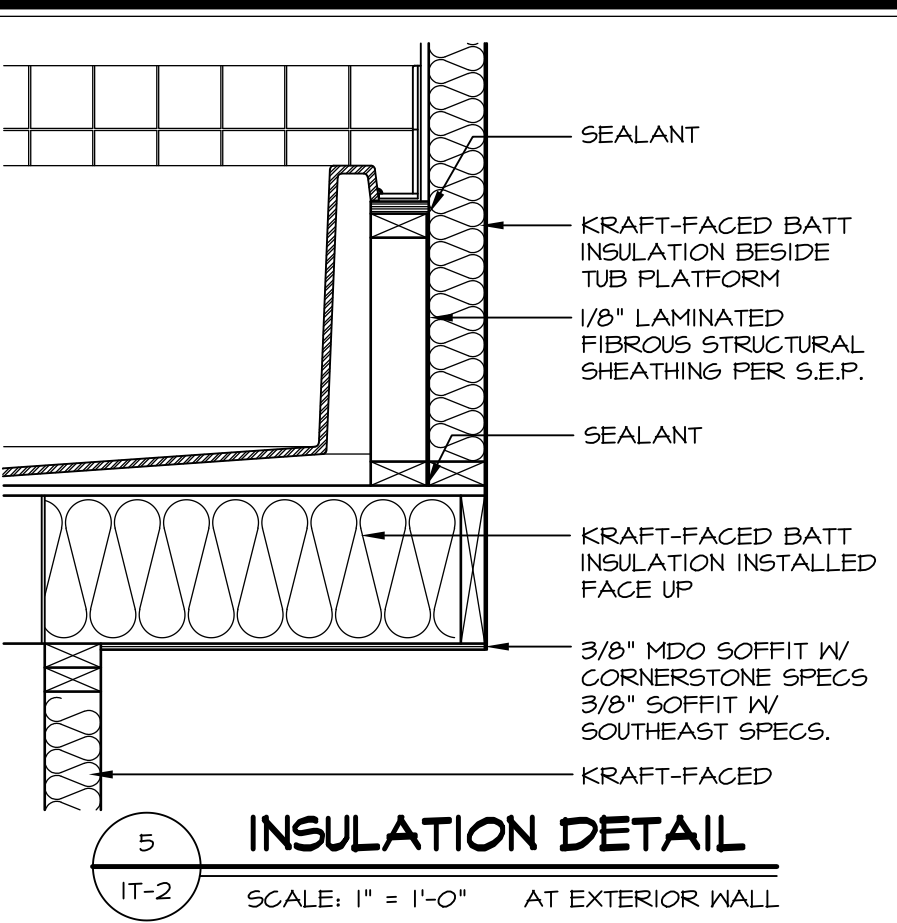
2 SECTION OF TUB ON PLATFORM CONDITION
SCALE: 1" = 1'-0"



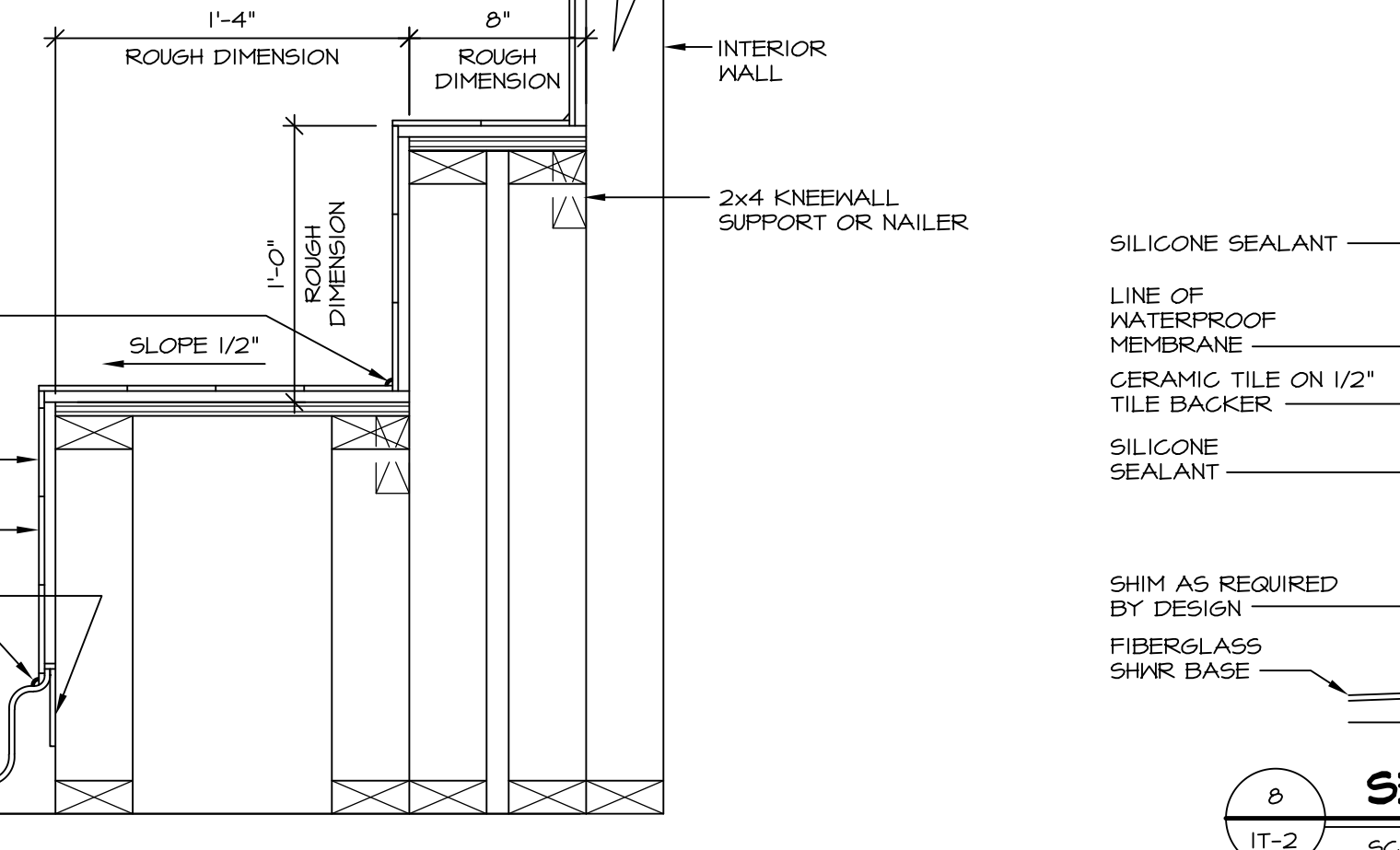
3 SECTION OF TUB TO WALL CONDITION
SCALE: 1" = 1'-0"



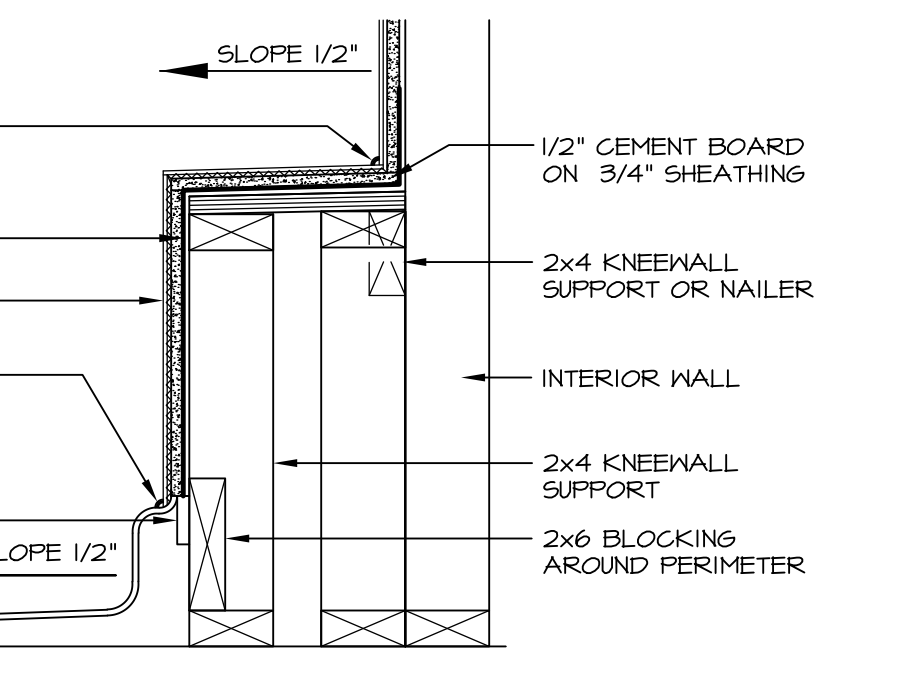
4 ELEVATION
SCALE: 1/2" = 1'-0"



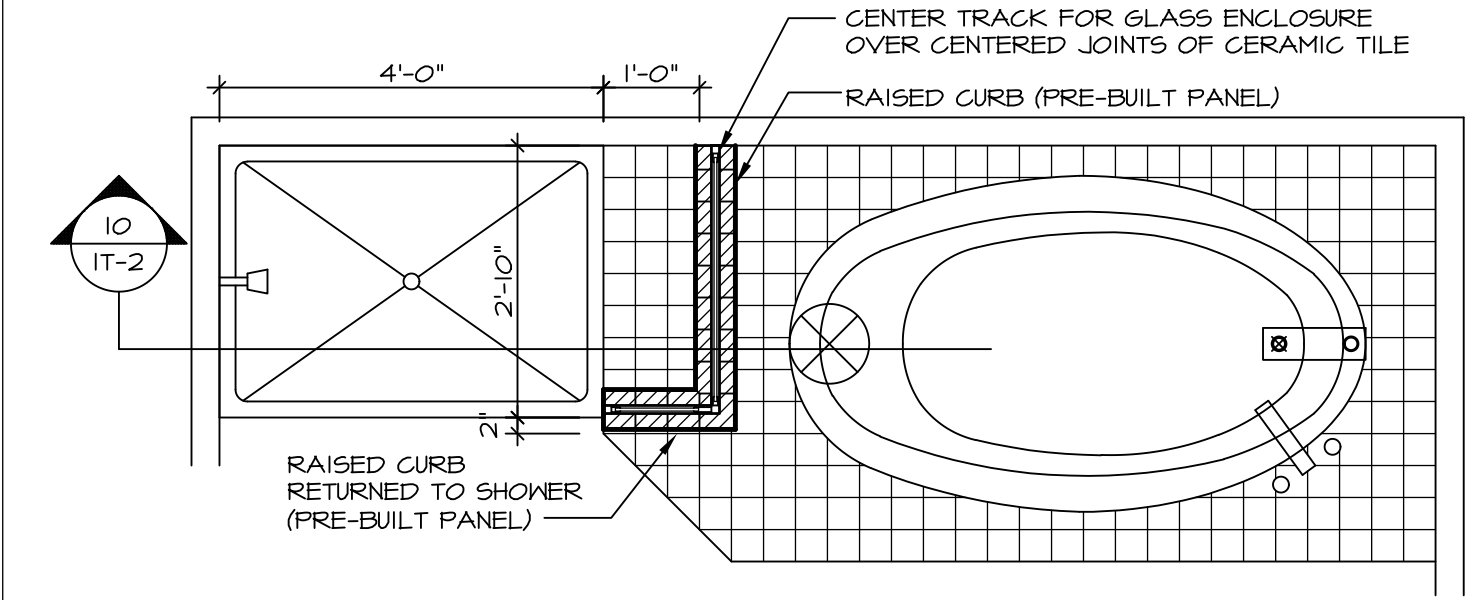
5 INSULATION DETAIL
SCALE: 1" = 1'-0" AT EXTERIOR WALL



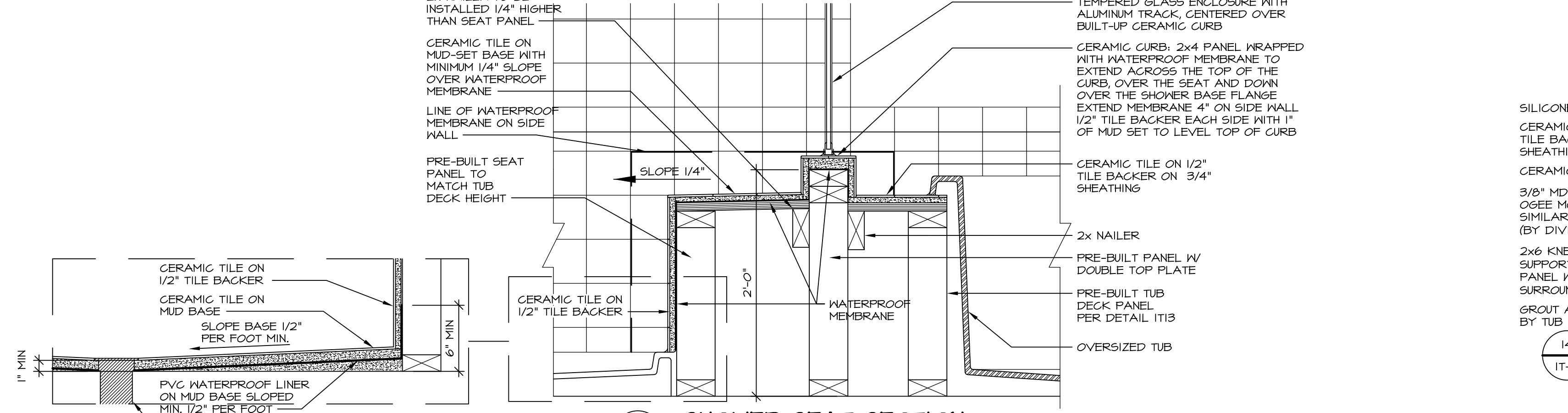
7 SECTION OF SHOWER SEAT AND SHELF
SCALE: 1/2" = 1'-0"



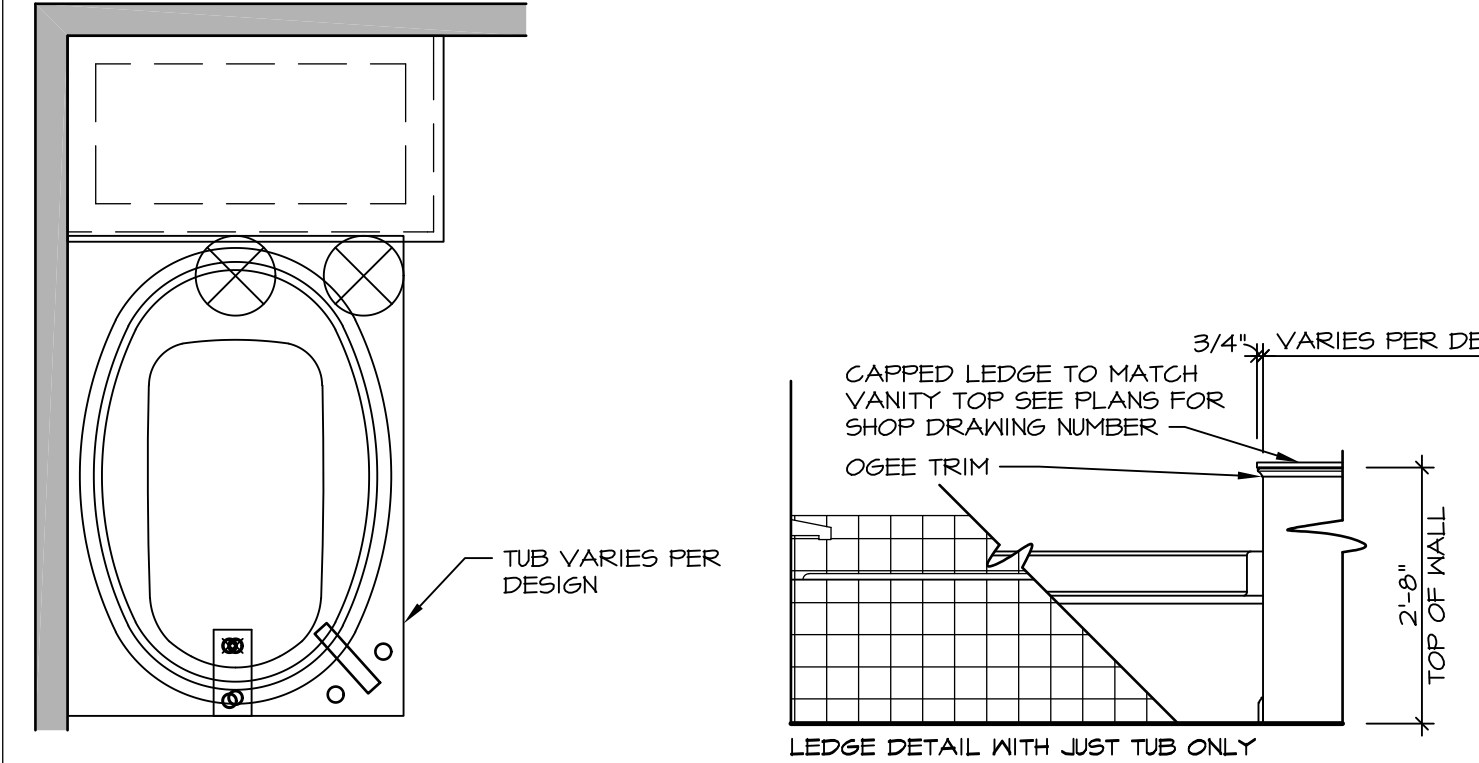
8 SECTION OF SHOWER SEAT
SCALE: 1/2" = 1'-0" FIBERGLASS SHOWER BASE



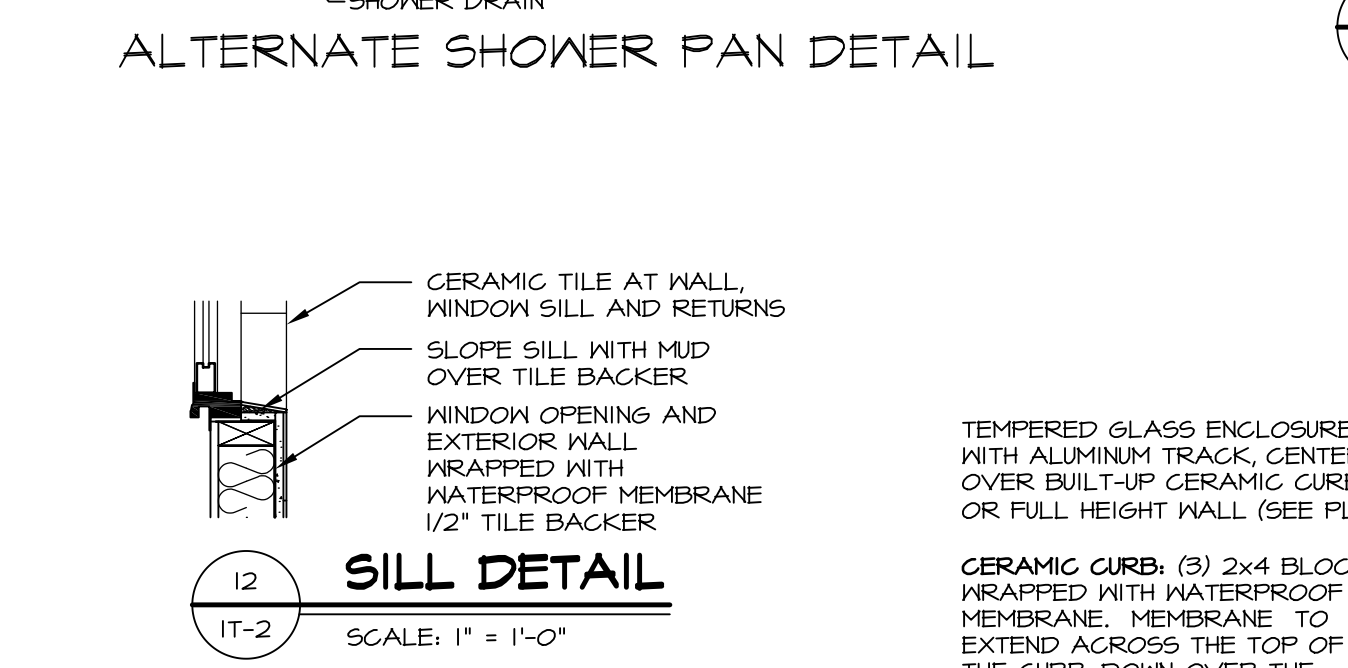
9 SHOWER SEAT PLAN / DETAIL
SCALE: 1/2" = 1'-0"



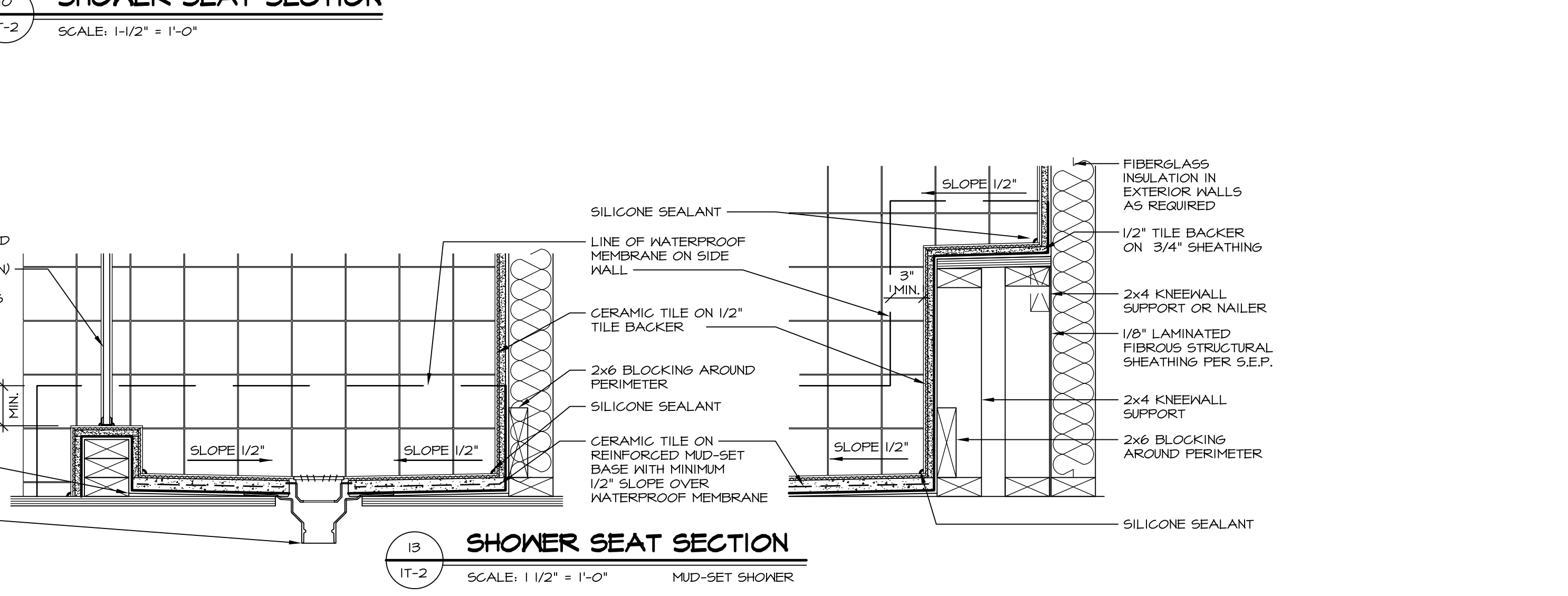
10 SHOWER SEAT SECTION
SCALE: 1/2" = 1'-0"



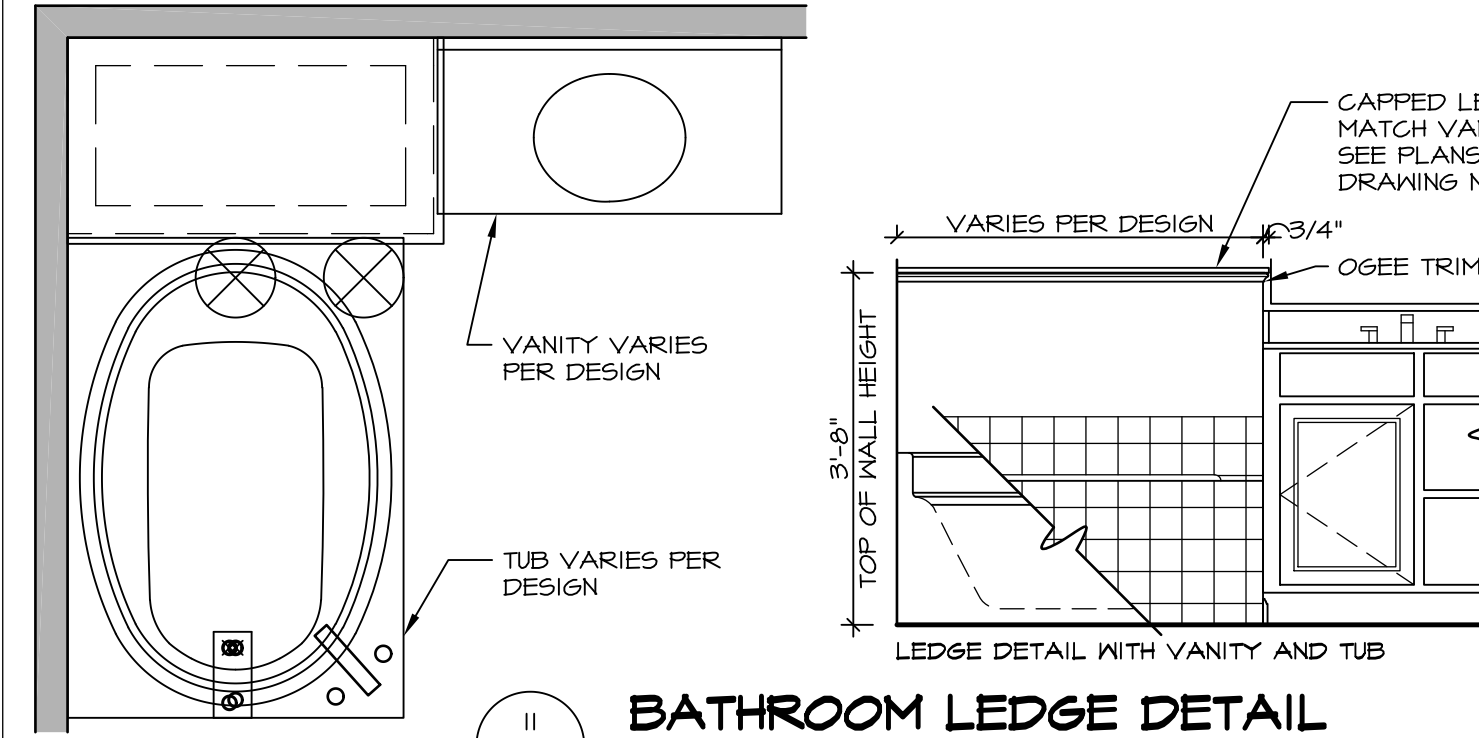
11 BATHROOM LEDGE DETAIL
SCALE: 1/2" = 1'-0"



12 SILL DETAIL
SCALE: 1" = 1'-0"



13 SHOWER SEAT SECTION
SCALE: 1/2" = 1'-0" MUD-SET SHOWER

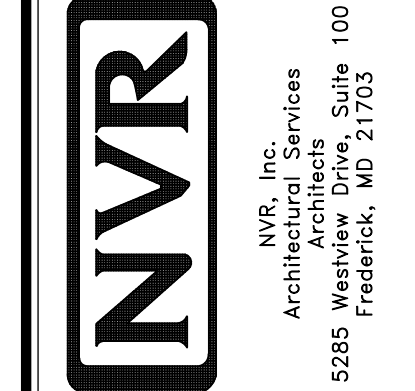


14 BATHROOM LEDGE DETAIL
SCALE: 1/2" = 1'-0"

REVISIONS

REV. NO.	DATE	DESCRIPTION
1	5/11/17	EBP - REVISED DETAIL 1 AND 11 TO REMOVE TUB ACCESS PANEL REF. (DSS #15 5414)
2	9/21/17	EBP - REVISED T-FLY NOTE TO CALL OUT LFS
3	9/21/17	EBP - REVISED NOTE ON DETAIL #1 - REVISED ORDER OF MATERIAL PARA#4934

NVR, Inc., owner, expressly reserves its common law copyright and other property rights in these plans. These plans are not to be reproduced, copied, or otherwise used in any way without the prior written consent of NVR, Inc.



SET NO. NVR

VERSION

DRAWN BY

DATE:

OPTION

MODEL STANDARD DETAILS

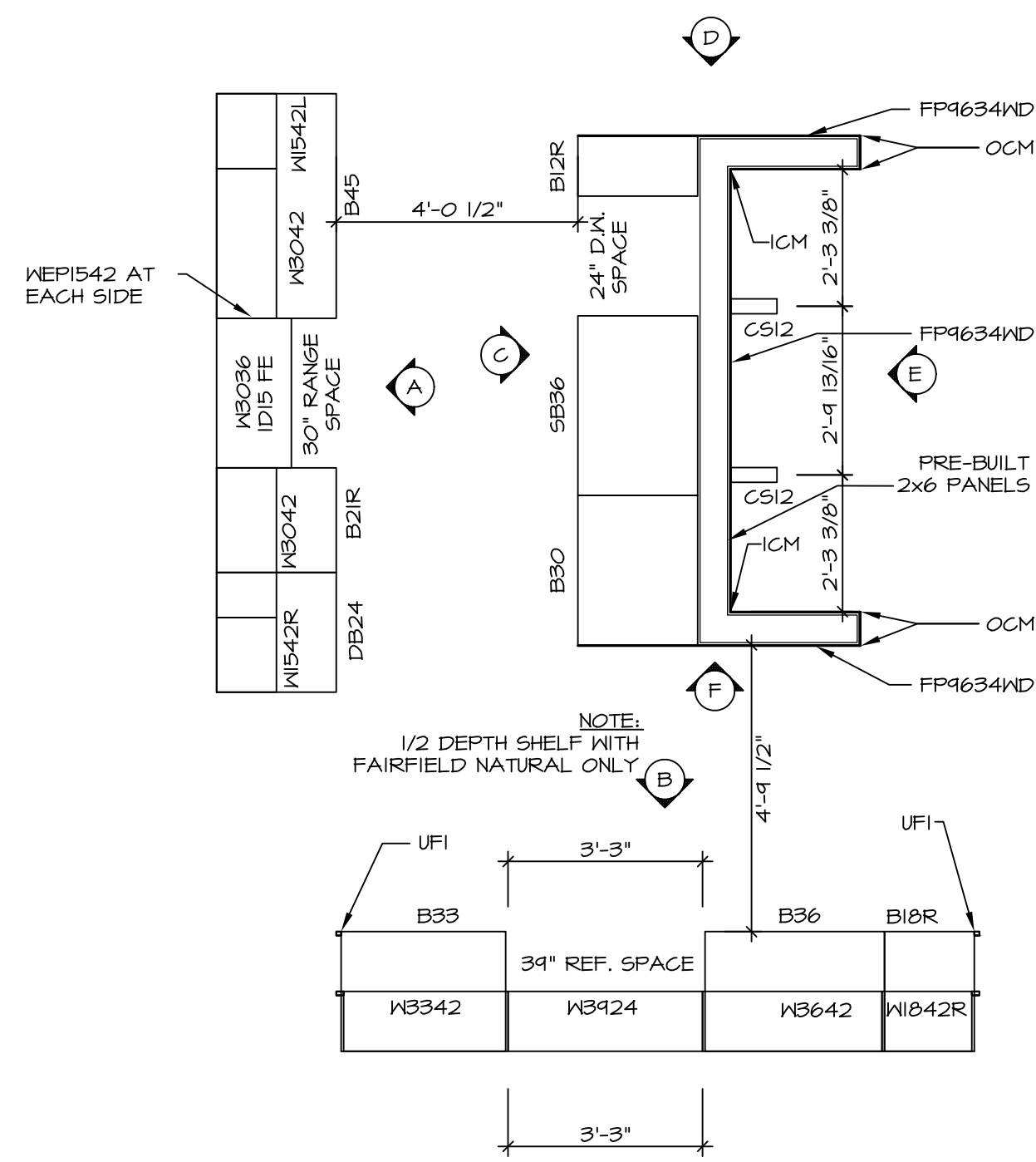
DRAWING TITLE INTERIOR TRIM DETAILS

BATH DETAILS

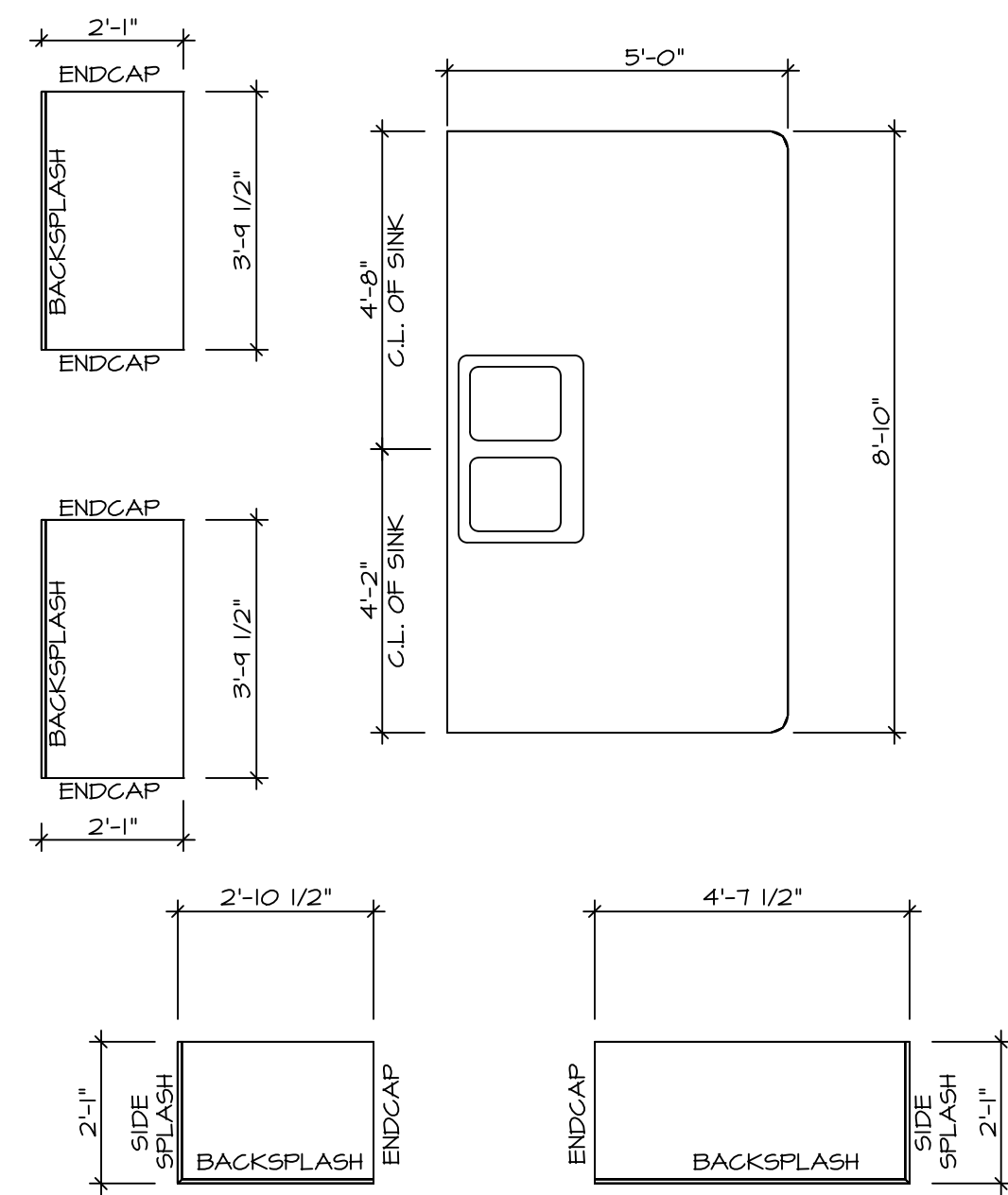
OPTION DESCRIPTION

SHEET NO. IT-2

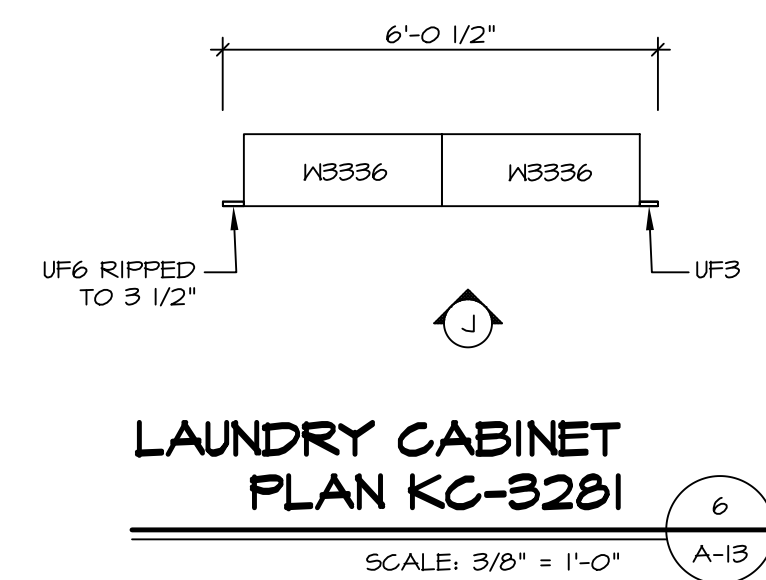
J:\Dwg\NVR\Interior Trim\IT2.dwg 09/27/17 - 9:20 am



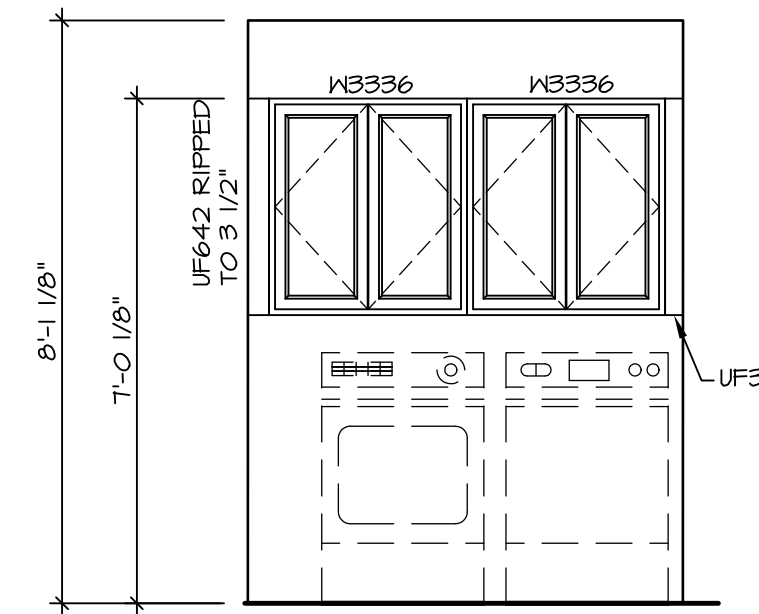
KITCHEN CABINET PLAN / KC-3230
SCALE: 3/8" = 1'-0"
A-13



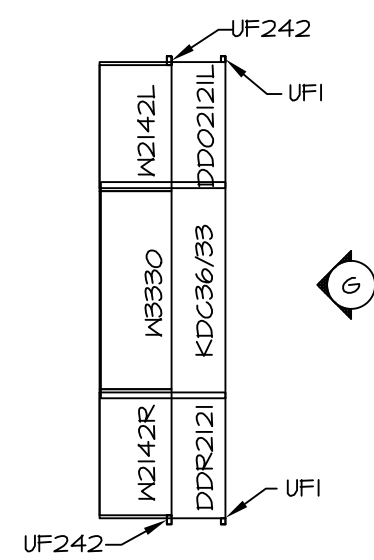
KITCHEN COUNTERTOP PLAN / KT-3230
SCALE: 3/8" = 1'-0"
A-13



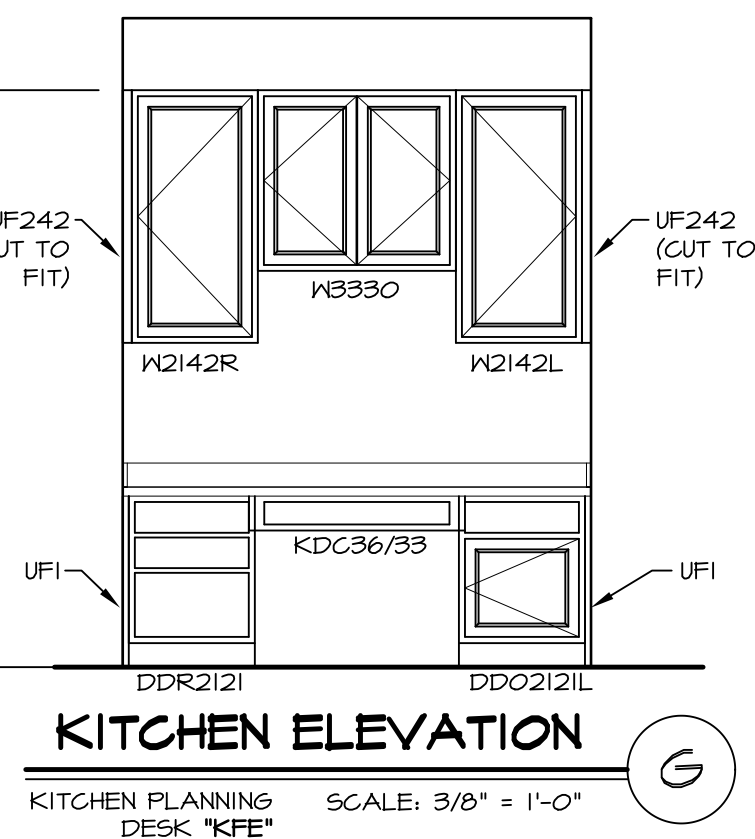
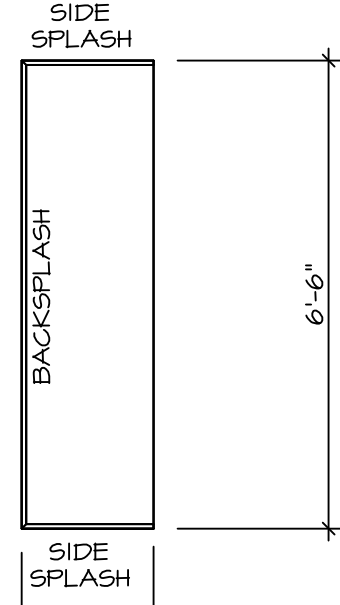
LAUNDRY CABINET ELEVATION
SCALE: 3/8" = 1'-0"
A-13



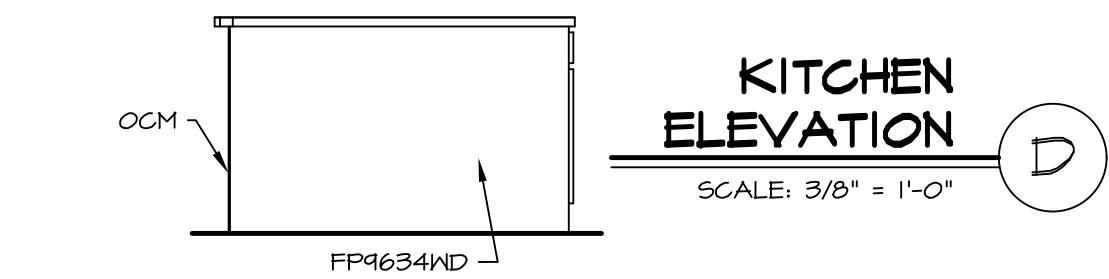
KITCHEN CABINET PLAN / KC-3232
SCALE: 3/8" = 1'-0"
A-13



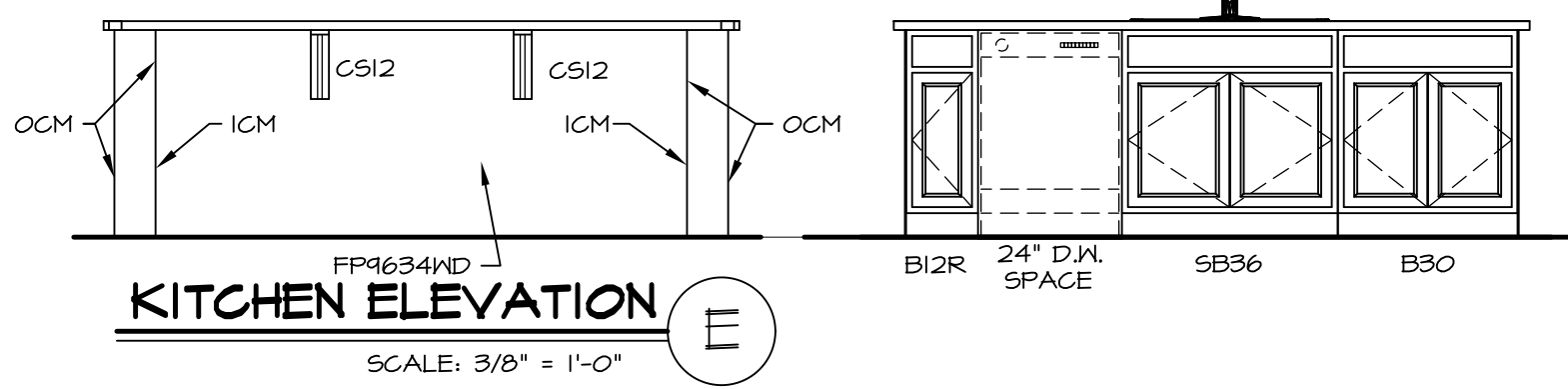
KITCHEN COUNTER PLAN / KT-3232
SCALE: 3/8" = 1'-0"
A-13



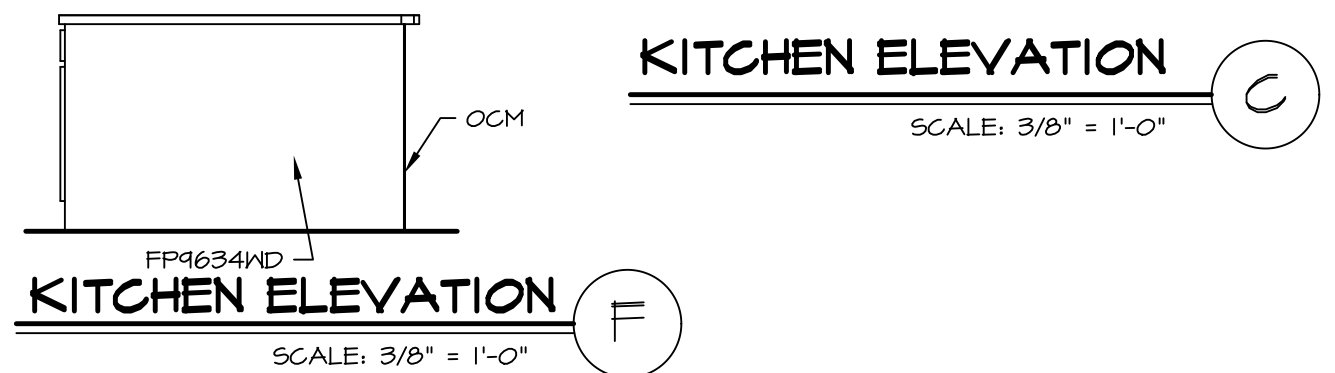
KITCHEN ELEVATION
SCALE: 3/8" = 1'-0"
A-13



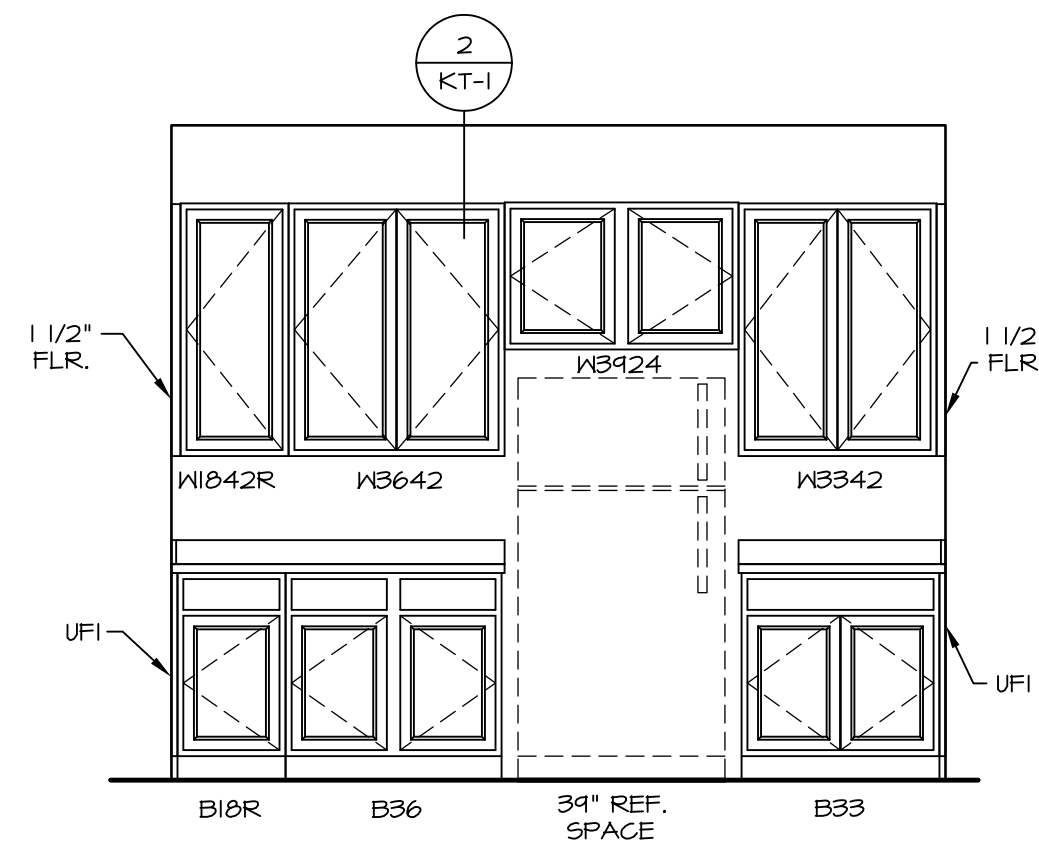
KITCHEN ELEVATION
SCALE: 3/8" = 1'-0"
A-13



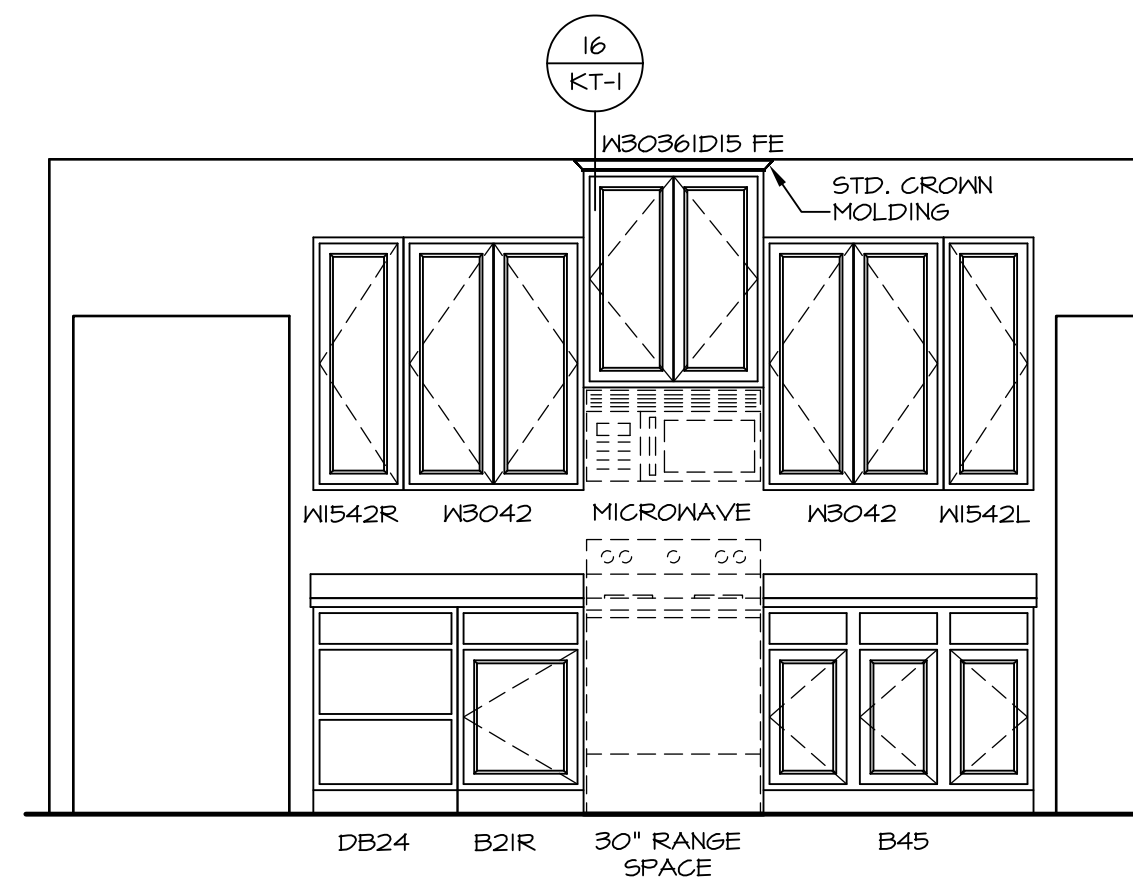
KITCHEN ELEVATION
SCALE: 3/8" = 1'-0"
A-13



KITCHEN ELEVATION
SCALE: 3/8" = 1'-0"
A-13



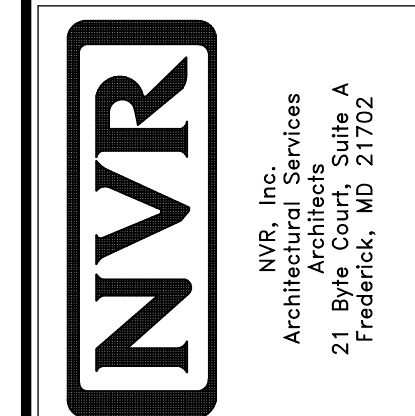
KITCHEN ELEVATION
SCALE: 3/8" = 1'-0"
A-13



KITCHEN ELEVATION
SCALE: 3/8" = 1'-0"
A-13

REV. NO.	DATE	DESCRIPTION
1	11/05/16	TRV - STANDARD DETAILS 5.0

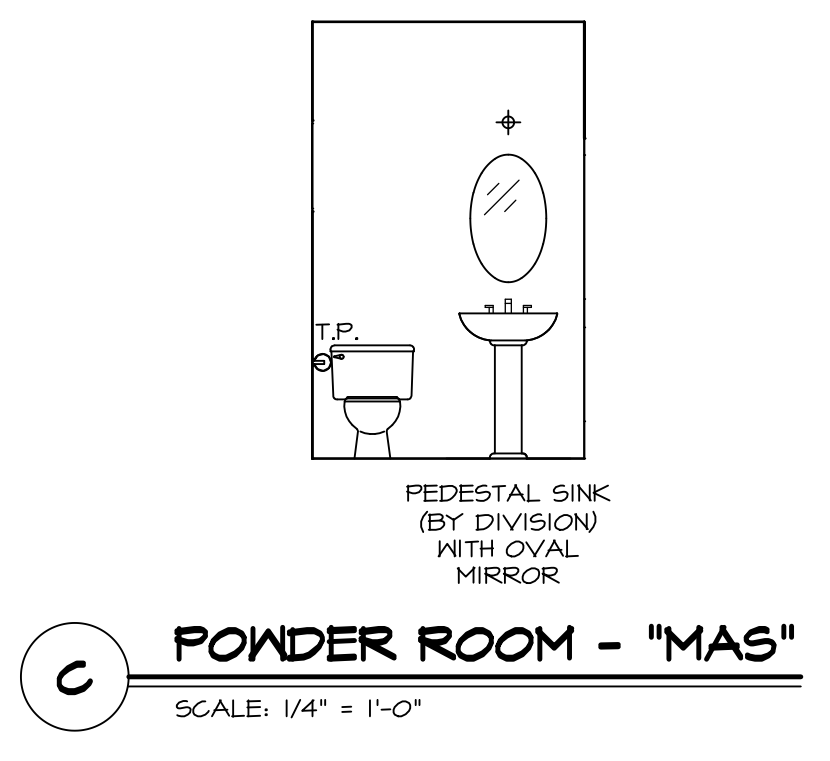
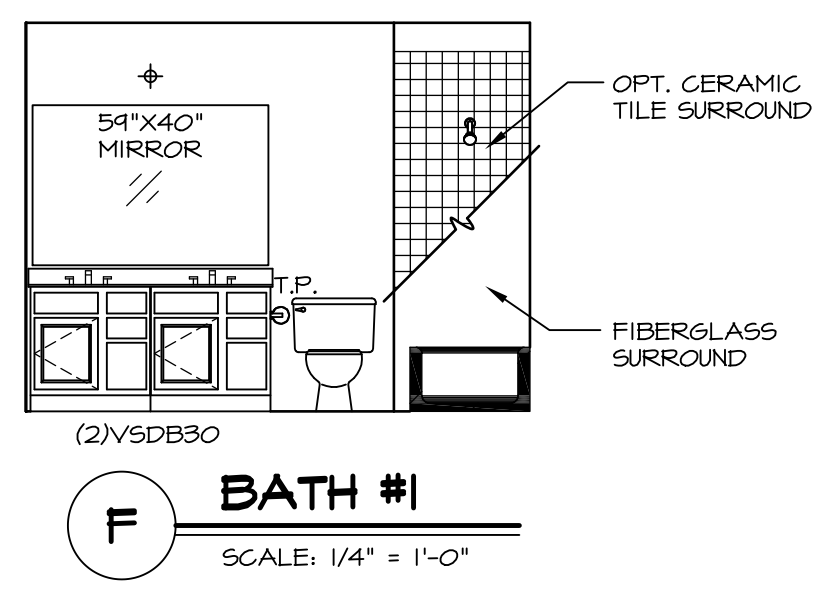
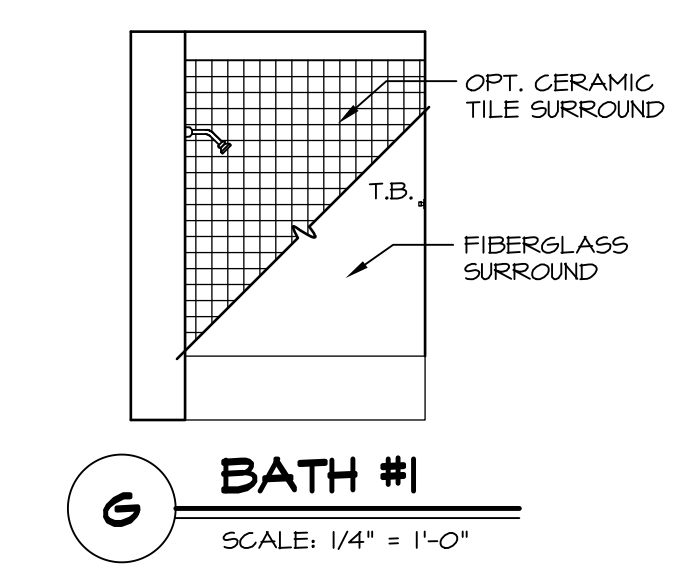
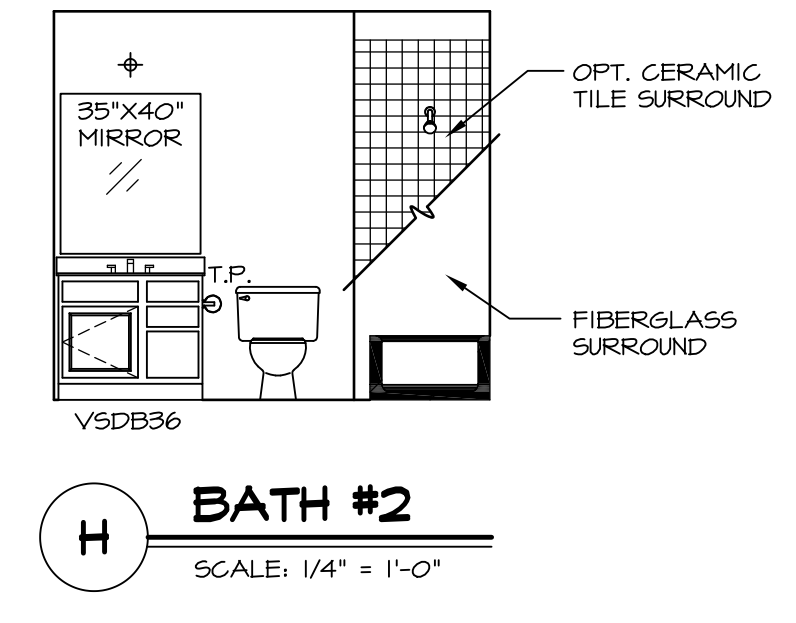
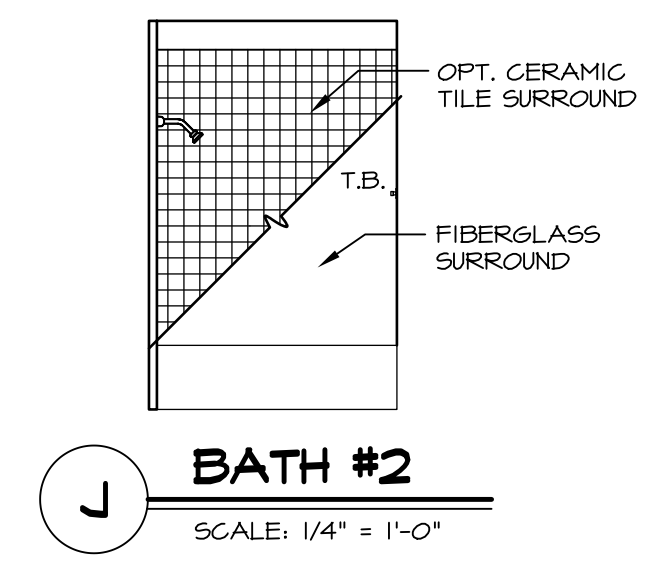
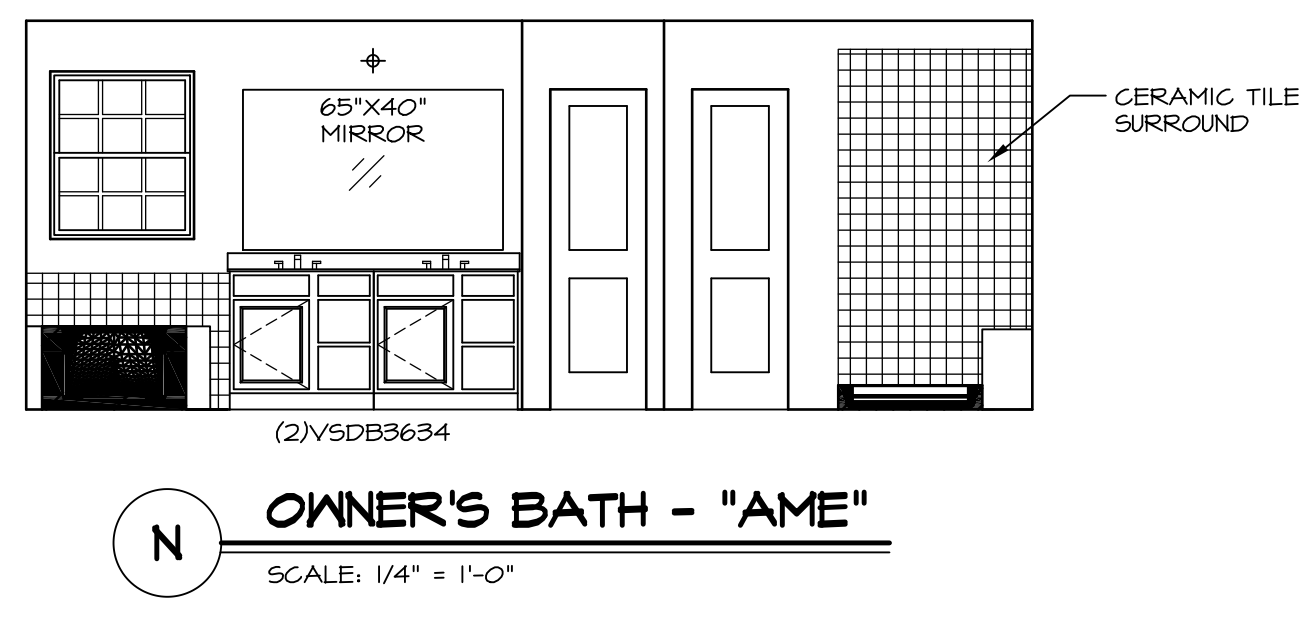
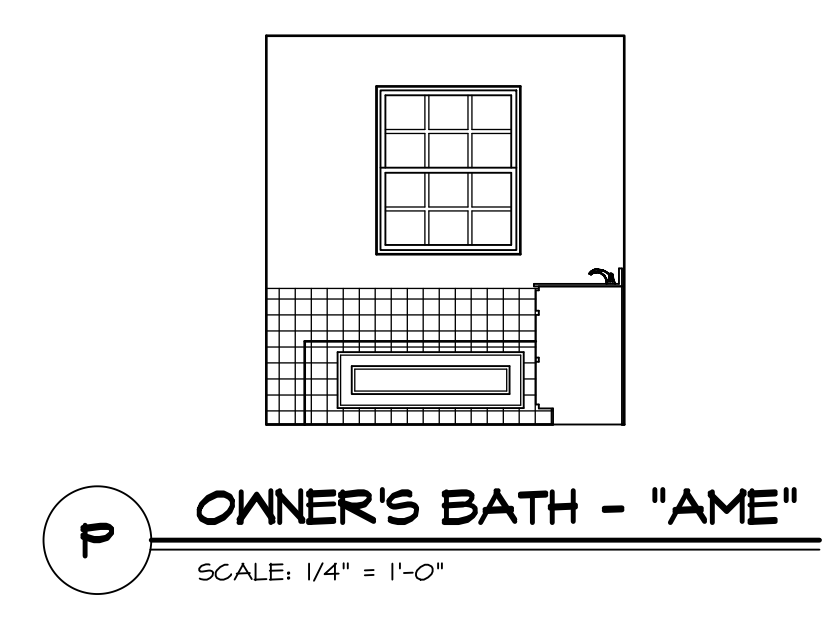
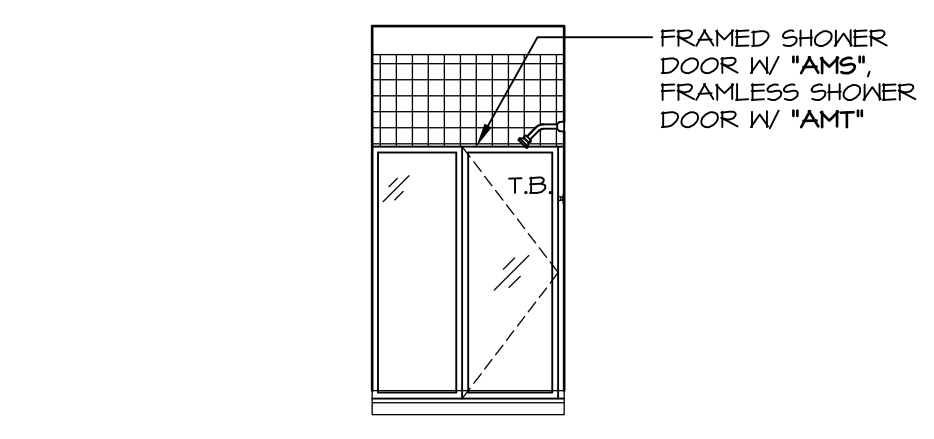
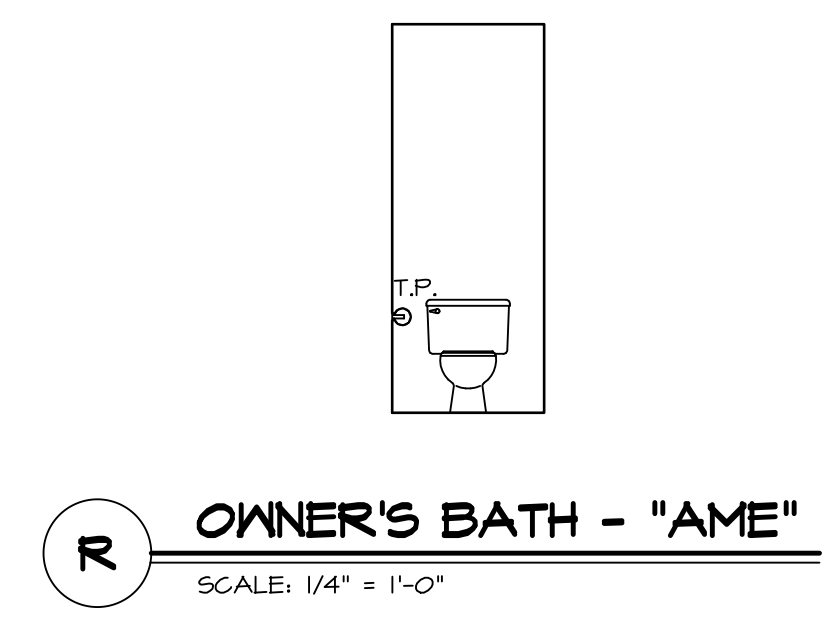
NVR, Inc., owner, expressly reserves its copyright in these plans. These plans are not to be reproduced, changed, copied in any way, or used for any other purpose without the written consent of NVR, Inc.



SHEET NO.	MODEL	SET NO.	VERSION	DRAWN BY	DATE	OPTION
A-13	NORMANDY	01	01	RJC	6/29/15	
	DRAWING TITLE					
	KITCHEN LAYOUT					
	OPTION DESCRIPTION					

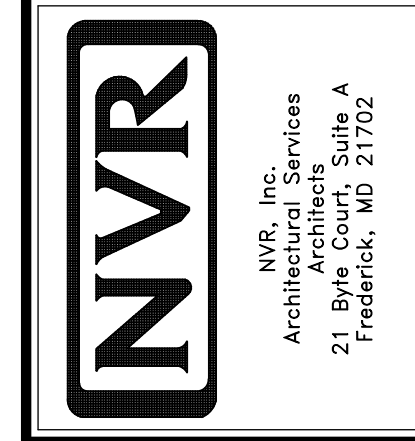
NOTES:

1. TEMPERED GLASS SHOWER ENCLOSURE WITH SWING DOOR OR OPTIONAL SLIDING DOOR BY DIVISION
2. TUB ACCESS PANELS PROVIDED AS NEEDED, ALL MATERIALS BY DIVISION
3. REFER TO SHEET (IT-2) FOR TUB AND SHOWER DETAILS.
4. ALL V5DB24-42 DRAWERS TO BE SET ON RIGHT HAND.
5. BATH ELEVATIONS ARE SHOWN PER PLAN.



REV. NO.	DATE	REMARKS
1	08/07/16	N.E. - DRAWING ALIGNMENT
2	11/15/16	TRV. - STANDARD DETAILS 5.0

NVR, Inc., owner, expressly reserves its copyright in the drawings and plans. These plans are not to be reproduced, changed, copied, or otherwise used without the written consent of NVR, Inc.



SET NO. NRM00	VERSION 01
DRAWN BY SGA	DATE: 5/29/15
OPTION	

MODEL	NORMANDY
DRAWING TITLE	BATH ELEVATIONS
OPTION DESCRIPTION	