

LEGEND

	BEARING WALL
	NON BEARING WALL
	INDICATES BEARING FROM POINT-LOAD ABOVE
	JACKS
	BEAM/HEADER
	PAD FOOTING
	STEEL COLUMN
	PORTAL FRAME
	JOIST/TRUSS
	LVL
	ENGINEERING PAGE NUMBER

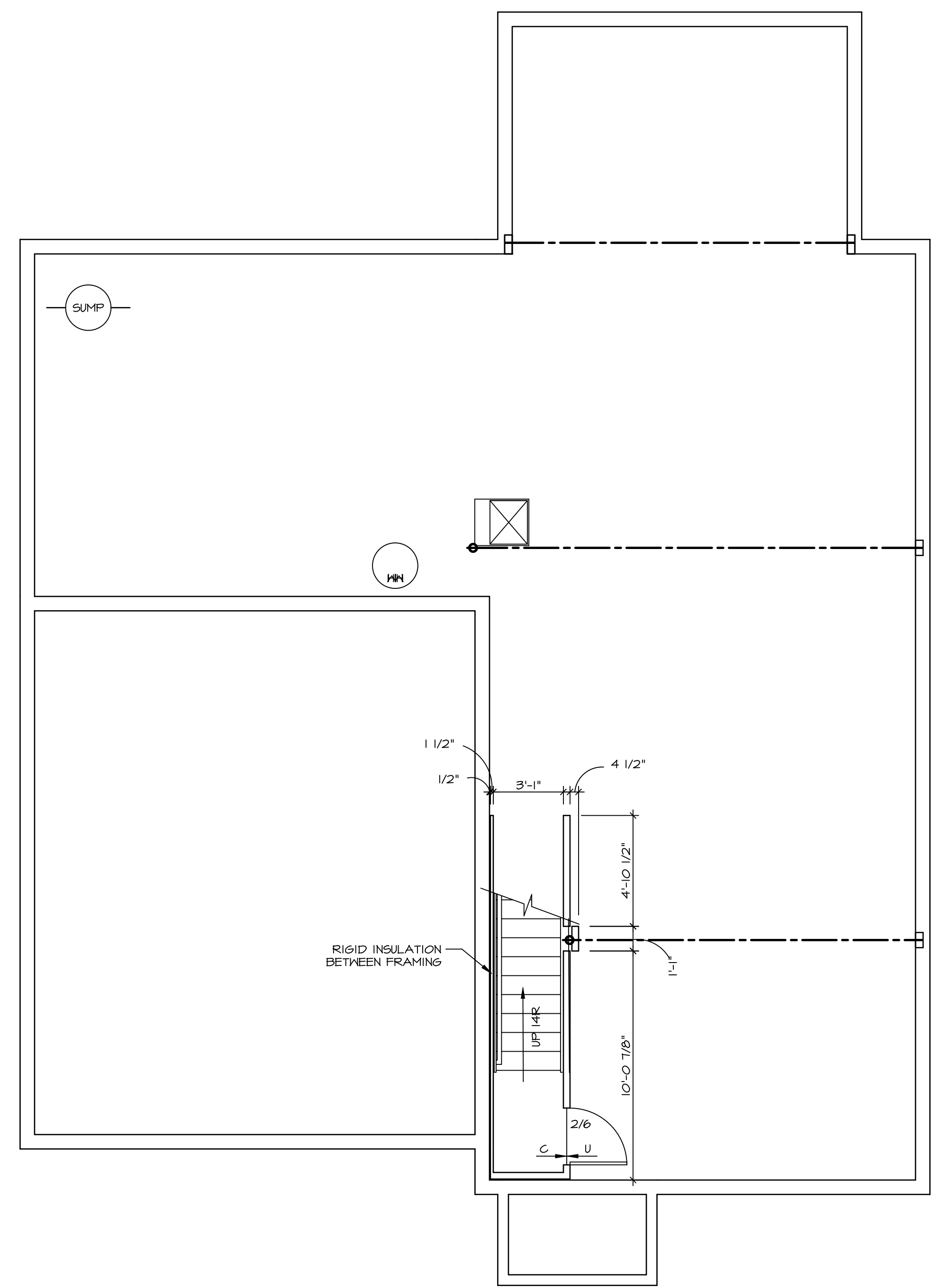
SEE FC DETAILS FOR FRAMING CONNECTORS

- FLOOR PLAN NOTES**
1. ALL HEADERS ARE (2) 2x6 w/ 2x4 WALLS OR (3) 2x6 w/ 2x6 WALLS, UNLESS OTHERWISE NOTED.
 2. ALL HEADERS TO HAVE (1) 2x4 OR 2x6 JACK EACH END, UNLESS OTHERWISE NOTED.
 3. ALL EXTERIOR WALLS TO BE 4" AND ALL INTERIOR WALLS TO BE 3 1/2", UNLESS OTHERWISE NOTED.
 4. HATCHED AREAS INDICATE DROPPED CEILING. ALL DROPPED CEILING ARE 12" UNLESS OTHERWISE NOTED.
 5. SEE "BRACED WALL PANEL DETAIL SHEET" FOR SPECIAL WALL FRAMING LOCATIONS AND HEADER SIZES, IF APPLICABLE.
 6. SEE STANDARD DETAIL CATEGORY "IT" SHEET(S) FOR INTERIOR TRIM DETAILS.
 7. SEE ARCHITECTURAL DETAIL SHEET "AD" FOR HOUSE SPECIFIC INTERIOR TRIM OPTION TABLE.
 8. ALL WINDOWS HAVE T-O 1/2" HEADER HEIGHT UNLESS OTHERWISE NOTED.

GYPSUM NOTES

AT GARAGE:
GYPSUM BOARD AT COMMON WALLS, CEILING, BEAM WRAPS AND SUPPORTS PER STANDARD DETAIL FA-1(b) FIRE ASSEMBLIES OR AS REQUIRED BY LOCAL CODE.

AT STAIRS:
1/2" GYPSUM BOARD AT UNDERSIDE OF STAIRS AND WALLS IN CLOSET



BASEMENT FLOOR PLAN
SCALE: 1/4" = 1'-0"

SHEET NO. A-6	MODEL NAPLES	DRAWING TITLE BASEMENT FLOOR PLAN	SET NO. NAPOO	REV. NO. DATE	REMARKS
			VERSION 06	1 08/07/16 N.L. - DRAWING ALIGNMENT	
OPTION DESCRIPTION 31	DRAWN BY TN	DATE: 05/22/15	NVR, Inc., owner, expressly reserves its copyright in these plans. These plans are not to be reproduced, changed, copied, or otherwise used without the written consent of NVR, Inc.		
			<p>NVR, Inc. Architectural Services Architects 5285 Westpark Drive Frederick, MD 21703</p>		
C:\NVR\Solves\NAPLES_NAPOO_06\DCY-CH-M257A-985889\Sheets\Lot_Specific\31_A-6_BSMT_LS.dwg 10/18/18 - 6:41 pm					

LEGEND

- BEARING WALL
- NON BEARING WALL
- INDICATES BEARING FROM POINT-LOAD ABOVE
- JACKS
- BEAM/HEADER
- PAD FOOTINGS
- STEEL COLUMN
- PORTAL FRAME
- JOIST/TRUSS
- LVL
- ENGINEERING PAGE NUMBER

SEE FG DETAILS FOR FRAMING CONNECTORS

- FLOOR PLAN NOTES**
- ALL HEADERS ARE (2) 2x6 w/ 2x4 WALLS OR (3) 2x6 w/ 2x6 WALLS, UNLESS OTHERWISE NOTED.
 - ALL HEADERS TO HAVE (1) 2x4 OR 2x6 JACK AND KING STUD EACH END, UNLESS OTHERWISE NOTED.
 - ALL EXTERIOR WALLS TO BE 4" w/ OSB OR 3 1/2" w/ T-PLY, ALL INTERIOR WALLS TO BE 3 1/2", UNLESS OTHERWISE NOTED.
 - HATCHED AREAS INDICATE DROPPED CEILING. ALL DROPPED CEILING ARE 12" UNLESS OTHERWISE NOTED.
 - SEE "BRACED WALL PANEL DETAIL SHEET" FOR SPECIAL WALL FRAMING LOCATIONS AND HEADER SIZES, IF APPLICABLE.
 - SEE STANDARD DETAIL CATEGORY "IT" SHEET(S) FOR INTERIOR TRIM DETAILS.
 - SEE ARCHITECTURAL DETAIL SHEET "AD" FOR HOUSE SPECIFIC INTERIOR TRIM OPTION TABLE.
 - ALL WINDOWS HAVE 7'-0 1/2" HEADER HEIGHT UNLESS OTHERWISE NOTED.
 - ALL HEADERS IN NON-BEARING WALLS SHALL BE A SINGLE FLAT 2x4 OR 2x6 ATTACHED TO GRIFFLES ABOVE, UNLESS OTHERWISE NOTED.

- GYPSUM NOTES**
- AT GARAGE:
GYPSUM BOARD AT COMMON WALLS, CEILING, BEAM WRAPS AND SUPPORTS PER STANDARD DETAIL FA-(b) FIRE ASSEMBLIES OR AS REQUIRED BY LOCAL CODE.
- AT STAIRS:
1/2" GYPSUM BOARD AT UNDERSIDE OF STAIRS AND WALLS IN CLOSET

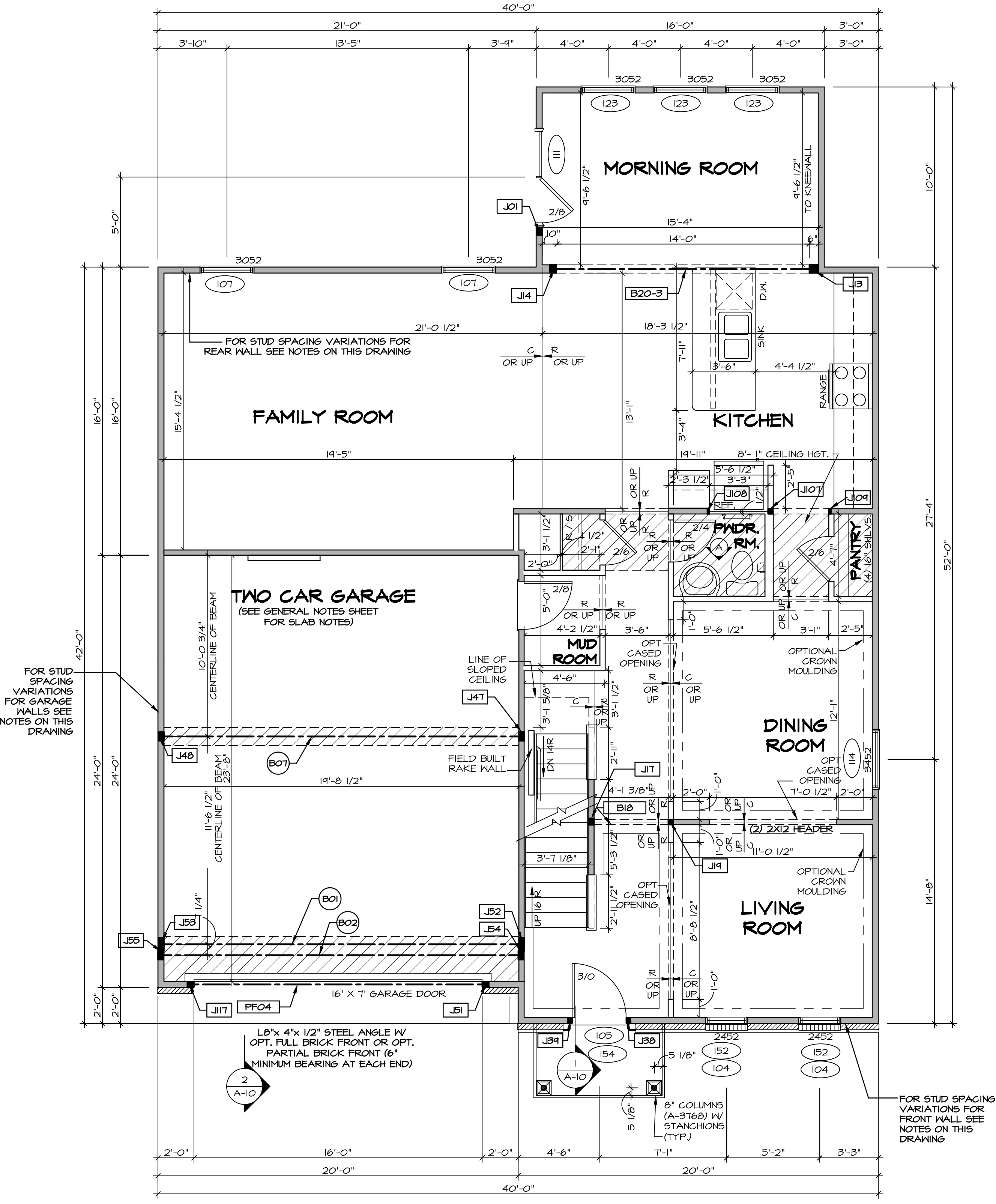
- LVL PLY TO PLY FASTENING SCHEDULE:**
- 1A - (2) PLY UP TO AND INCLUDING 11 7/8" TALL; FASTEN PLYS W/ (2) ROWS 16D NAILS AT 12" O.C.
 - 2A - (2) PLY 14" TO AND 18" TALL (INCLUSIVE); FASTEN PLYS W/ (3) ROWS 16D NAILS AT 12" O.C.
 - 3A - (2) PLY 20" TALL AND OVER; FASTEN PLYS W/ (4) ROWS 16D NAILS AT 12" O.C.
 - 4A - (3) PLY UP TO AND INCLUDING 11 7/8" TALL; FASTEN PLYS W/ (2) ROWS 16D NAILS AT 12" O.C. FROM EACH SIDE
 - 5A - (3) PLY 14" TO AND 18" TALL (INCLUSIVE); FASTEN PLYS W/ (3) ROWS 16D NAILS AT 12" O.C. FROM EACH SIDE
 - 6A - (3) PLY 20" TALL AND OVER; FASTEN PLYS W/ (4) ROWS 16D NAILS AT 12" O.C. FROM EACH SIDE

FIRST FLOOR BEAM/HEADER SCHEDULE

IDENTIFIER	DESCRIPTION	LENGTH	OPTIONS	ENS. NUM.	REMARKS
B01	BEAM STEEL - W12X30	20'-3"	ZCC, Z9X, ELB, ELC, ELL, ELN, GCB	143	
B02	BEAM STEEL - W12X22	20'-3"	ELB, EVA, ELC, EVM, GCB	130	
B07	BEAM STEEL - W12X14	20'-3"	GCB	103	
B18	INT HEADER - 2X8 - 2 PLY	4'-7 1/2"		100	FIELD INSTALLED
B20-3	LVL - 16	14'-11"	MAA, ZCC	124	5A
PF04	EXT HEADER - 2X12 - 2 PLY	14'-4"	GCB, ELB, ELC, ELL, ELN	120	PORTAL FRAME

FIRST FLOOR JACK SCHEDULE

IDENTIFIER	DESCRIPTION	OPTIONS	ENS. NUM.	REMARKS
J01	JACK - (3) 2X4 SPF STUD GRADE	SRM, SGK	112	FULL HEIGHT STUDS
J107	JACK - (2) 2X4 SPF STUD GRADE	ZCC	167	
J108	JACK - 2X4 SPF STUD GRADE		150, 167	
J109	JACK - 2X4 SPF STUD GRADE		150, 167	
J117	JACK - (3) 2X4 SPF STUD GRADE	GCB	120	
J13	JACK - (4) 2X6 SPF STUD GRADE	ZCC, MAA	124	
J14	JACK - (3) 2X6 SPF STUD GRADE	ZCC, MAA	124	
J17	JACK - (3) 2X4 SPF STUD GRADE	ZCC, FBA		
J14	JACK - (2) 2X4 SPF STUD GRADE	MBL		
J59	JACK - (2) 2X4 SPF STUD GRADE	ELB	105	
J94	JACK - (2) 2X4 SPF STUD GRADE	ELB	105	
J47	JACK - (4) 2X4 SPF STUD GRADE	GCB		
J48	JACK - (4) 2X4 SPF STUD GRADE	GCB		
J51	JACK - (3) 2X4 SPF STUD GRADE	GCB	120	
J52	JACK - (6) 2X4 SPF	GCB, ELB, ELC, ELL, ELN	119	
J53	JACK - (6) 2X4 SPF	SRM, SGK, SRI, SXS, GCB	142, 143	
J54	JACK - (4) 2X4 SPF STUD GRADE	GCB, ELB, EVA, ELC, EVM	130	
J55	JACK - (4) 2X4 SPF STUD GRADE	GCB, ELB, EVA, ELC, EVM	130	



- STUD SPACING FOR FRONT WALLS AT LIVING ROOM:**
- 115 NO ATTIC "BTU/MAU", 2x4 STUD WALLS AT 16" O.C.
 - 157 W ATTIC "BTU/MAU", 2x4 STUD WALLS AT 12" O.C.
- STUD SPACING FOR FRONT WALLS AT FOYER:**
- 116 2x4 STUD WALLS AT 12" O.C.
 - 157 2x4 STUD WALLS AT 12" O.C.
- STUD SPACING FOR FRONT / SIDE WALLS AT GARAGE:**
- 125 W 60 MPH "SRM" OR 100 MPH "SQK", 2x4 STUD WALLS AT 16" O.C. OR
 - 125 W 110 MPH "SQL" OR 120 MPH "SRX", 2x4 STUD WALLS AT 12" O.C.
- STUD SPACING FOR REAR WALLS AT DINETTE/ KITCHEN:**
- 117 W CORPORATE TRUSS SPECS, "SRI" OR SOUTHEAST SPECS, "SXS" WITHOUT ATTIC, 2x4 STUD WALLS AT 16" O.C. OR
 - 117 W NORTHEAST TRUSS SPECS, "SRJ" WITHOUT ATTIC, 2x4 STUD WALLS AT 12" O.C. OR
 - 158 W ATTIC "BTU/MAU", 2x4 STUD WALLS AT 12" O.C.
- STUD SPACING FOR REAR WALLS AT FAMILY ROOM:**
- 117 NO ATTIC "BTU/MAU", 2x4 STUD WALLS AT 16" O.C. OR
 - 158 W ATTIC "BTU/MAU", 2x4 STUD WALLS AT 12" O.C.

STEEL COLUMN SCHEDULE

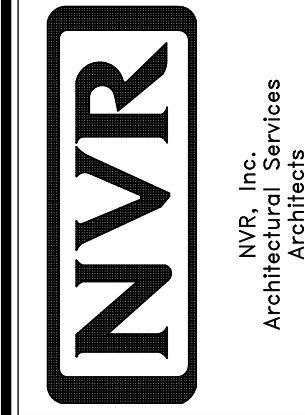
IDENTIFIER	STYLE	HEIGHT	OPTIONS	ENS. NUM.	REMARKS
A-10					
A-11					
A-12					
A-13					
A-14					
A-15					
A-16					
A-17					
A-18					
A-19					
A-20					
A-21					
A-22					
A-23					
A-24					
A-25					
A-26					
A-27					
A-28					
A-29					
A-30					
A-31					
A-32					
A-33					
A-34					
A-35					
A-36					
A-37					
A-38					
A-39					
A-40					
A-41					
A-42					
A-43					
A-44					
A-45					
A-46					
A-47					
A-48					
A-49					
A-50					
A-51					
A-52					
A-53					
A-54					
A-55					
A-56					
A-57					
A-58					
A-59					
A-60					
A-61					
A-62					
A-63					
A-64					
A-65					
A-66					
A-67					
A-68					
A-69					
A-70					
A-71					
A-72					
A-73					
A-74					
A-75					
A-76					
A-77					
A-78					
A-79					
A-80					
A-81					
A-82					
A-83					
A-84					
A-85					
A-86					
A-87					
A-88					
A-89					
A-90					
A-91					
A-92					
A-93					
A-94					
A-95					
A-96					
A-97					
A-98					
A-99					
A-100					

FIRST FLOOR PLAN
SCALE: 1/4" = 1'-0"

REVISIONS

REV. NO.	DATE	DESCRIPTION
1	08/01/16	N.L. - DRAWING ALIGNMENT
2	07/12/17	SLS - T-PLY CONVERSION PROJECT

NVR, Inc., owner, expressly reserves its copyright in these plans. These plans are not to be reproduced, changed, copied, or otherwise used in any way without the written consent of NVR, Inc.



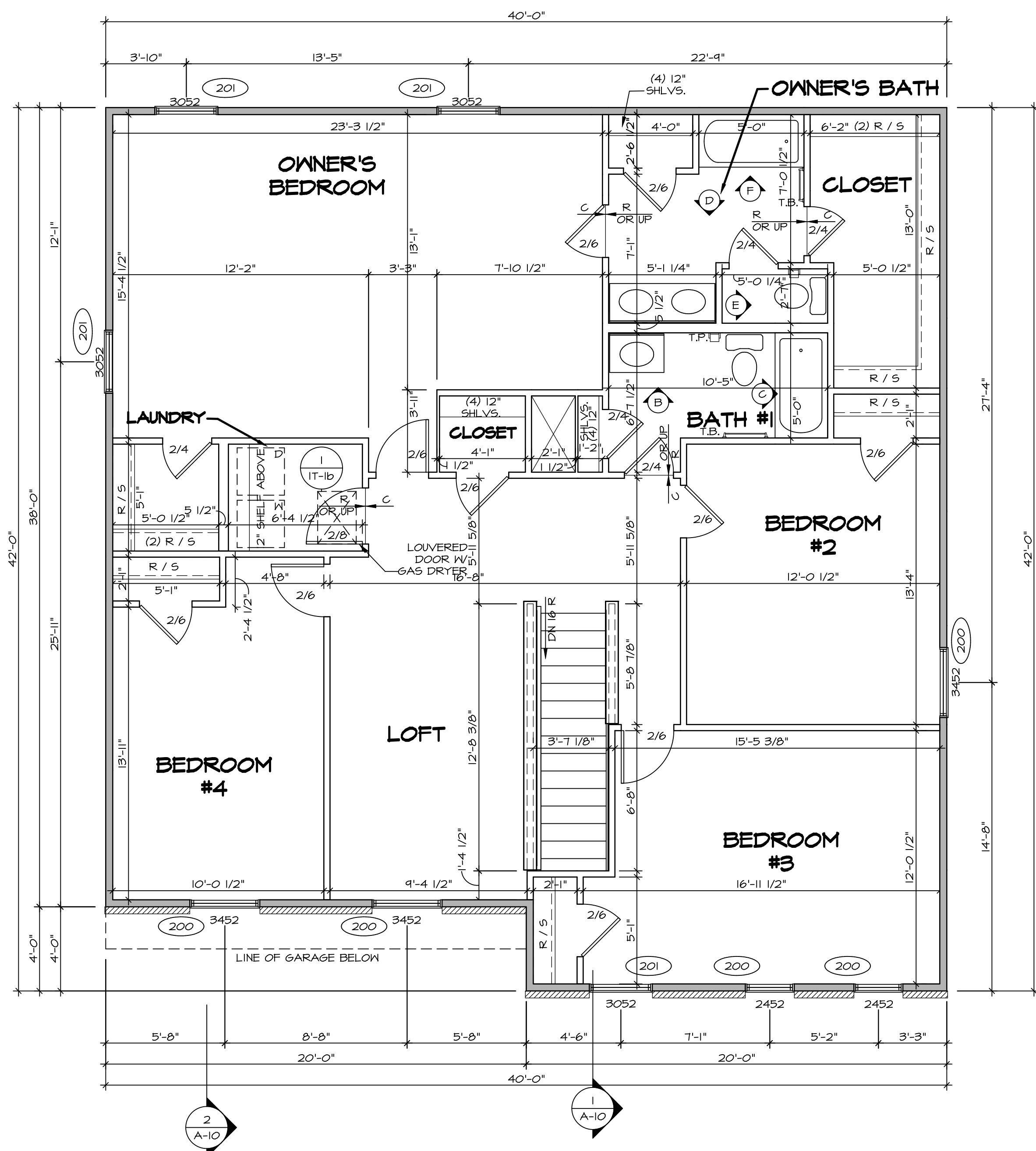
MODEL
NAPLES

DRAWING TITLE
FIRST FLOOR PLAN

OPTION DESCRIPTION
OPTION

SET NO. NAPOO
VERSION 06
DRAWN BY TN
DATE: 05/22/15

SHEET NO. A-7
32



SECOND FLOOR PLAN
SCALE: 1/4" = 1'-0"

LEGEND

	BEARING WALL
	NON BEARING WALL
	INDICATES BEARING FROM POINT-LOAD ABOVE
	JACKS
	BEAM/HEADER
	PAD FOOTING
	STEEL COLUMN
	PORTAL FRAME
	JOIST/TRUSS
	LVL
	ENGINEERING PAGE NUMBER

SEE FC DETAILS FOR FRAMING CONNECTORS

- FLOOR PLAN NOTES**
- ALL HEADERS ARE (2) 2x6 W/ 2x4 WALLS OR (3) 2x6 W/ 2x6 WALLS, UNLESS OTHERWISE NOTED.
 - ALL HEADERS TO HAVE (1) 2x4 OR 2x6 JACK AND KING STUD EACH END, UNLESS OTHERWISE NOTED.
 - ALL EXTERIOR WALLS TO BE 4" W/ OSB OR 3 1/2" W/ T-PLY, ALL INTERIOR WALLS TO BE 3 1/2", UNLESS OTHERWISE NOTED.
 - HATCHED AREAS INDICATE DROPPED CEILINGS. ALL DROPPED CEILINGS ARE 12" UNLESS OTHERWISE NOTED.
 - SEE "BRACED WALL PANEL DETAIL SHEET" FOR SPECIAL WALL FRAMING LOCATIONS AND HEADER SIZES, IF APPLICABLE.
 - SEE STANDARD DETAIL CATEGORY 11" SHEET(S) FOR INTERIOR TRIM DETAILS.
 - SEE ARCHITECTURAL DETAIL SHEET "AD" FOR HOUSE SPECIFIC INTERIOR TRIM OPTION TABLE.
 - ALL WINDOWS HAVE T-O 1/2" HEADER HEIGHT UNLESS OTHERWISE NOTED.
 - ALL HEADERS IN NON-BEARING WALLS SHALL BE A SINGLE FLAT 2x4 OR 2x6 ATTACHED TO CRIPPLES ABOVE, UNLESS OTHERWISE NOTED.

SECOND FLOOR JACK SCHEDULE

IDENTIFIER	DESCRIPTION	OPTIONS	ENG. NUM.	REMARKS

- LVL PLY TO PLY FASTENING SCHEDULE:**
- 1A - (2) PLY UP TO AND INCLUDING 11 7/8" TALL; FASTEN PLYS W/ (2) ROWS 16D NAILS AT 12" O.C.
 - 2A - (2) PLY 14" TO AND 18" TALL (INCLUSIVE); FASTEN PLYS W/ (3) ROWS 16D NAILS AT 12" O.C.
 - 3A - (2) PLY 20" TALL AND OVER; FASTEN PLYS W/ (4) ROWS 16D NAILS AT 12" O.C.
 - 4A - (3) PLY UP TO AND INCLUDING 11 7/8" TALL; FASTEN PLYS W/ (2) ROWS 16D NAILS AT 12" O.C. FROM EACH SIDE
 - 5A - (3) PLY 14" TO AND 18" TALL (INCLUSIVE); FASTEN PLYS W/ (3) ROWS 16D NAILS AT 12" O.C. FROM EACH SIDE
 - 6A - (3) PLY 20" TALL AND OVER; FASTEN PLYS W/ (4) ROWS 16D NAILS AT 12" O.C. FROM EACH SIDE

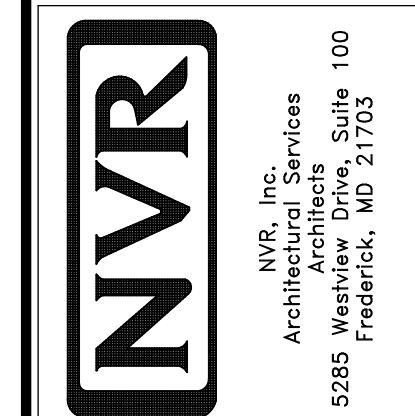
SECOND FLOOR BEAM/HEADER SCHEDULE

IDENTIFIER	DESCRIPTION	LENGTH	OPTIONS	ENG. NUM.	REMARKS

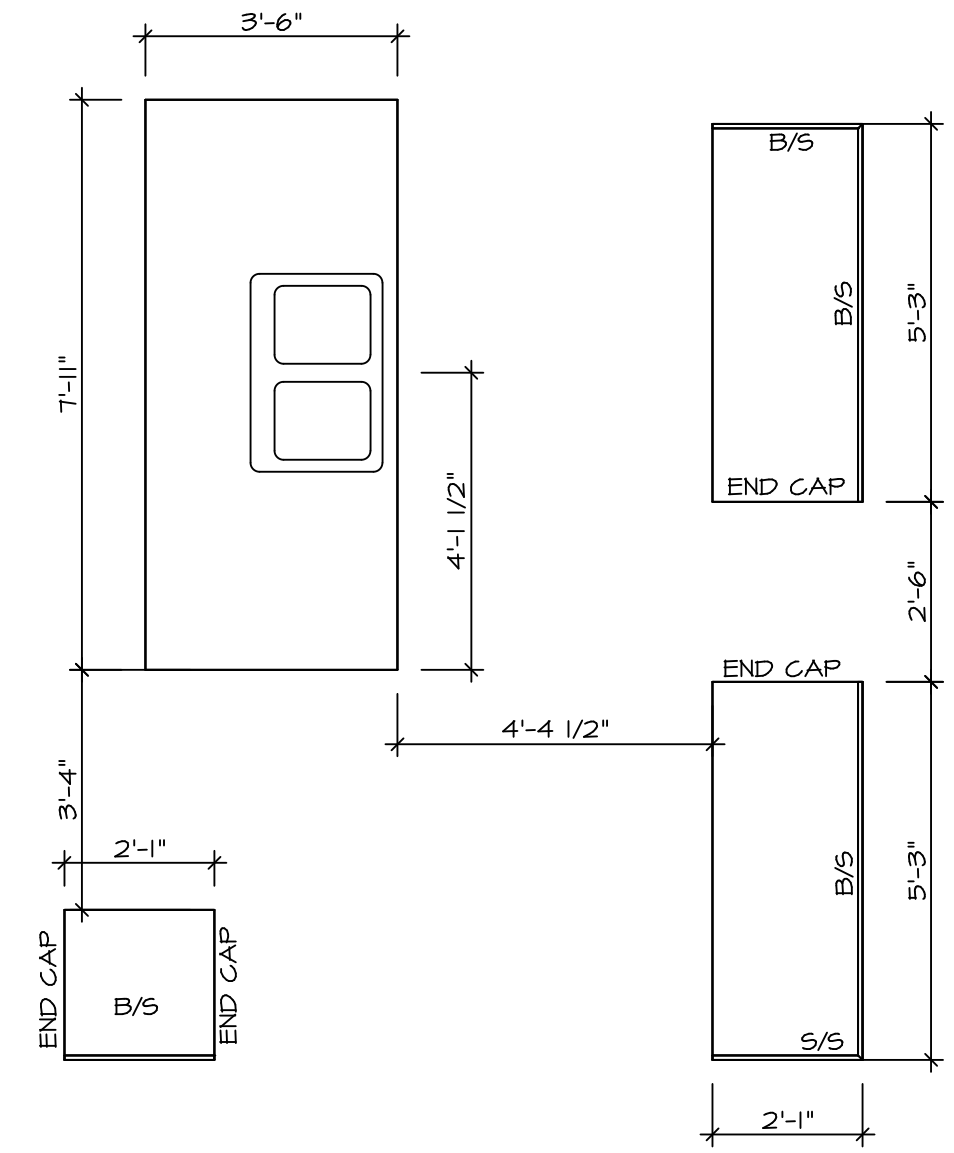
REMARKS

REV. NO.	DATE	DESCRIPTION
1	08/01/16	NL - DRAWING ALIGNMENT
2	07/12/17	SL5 - T-PLY CONVERSION PROJECT

NVR, Inc., owner, expressly reserves its copyright in these plans. These plans are not to be reproduced, changed, copied, or otherwise used in any way without the prior written consent of NVR, Inc.

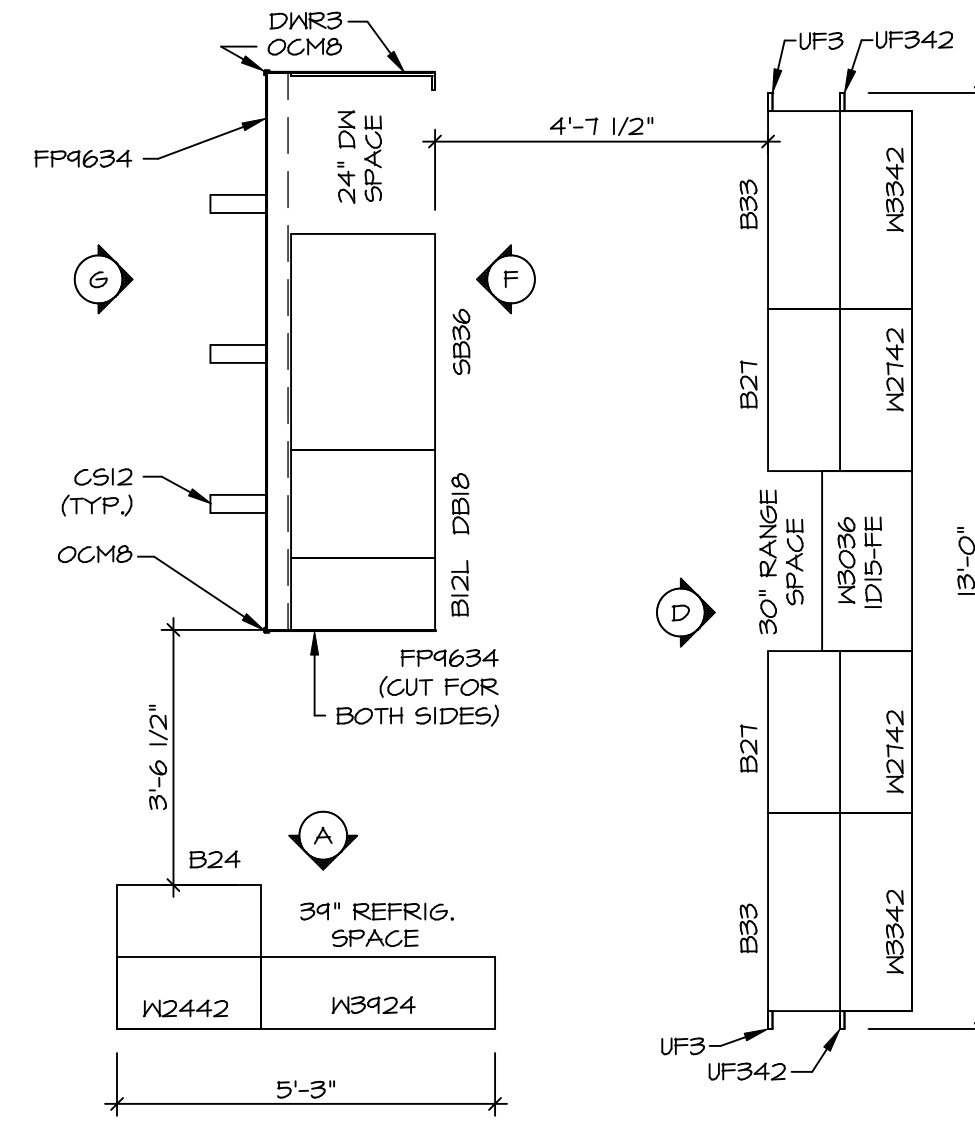


MODEL	MODEL	SET NO.	NAPOO
NAPLES	VERSION	06	06
DRAWING TITLE	DRAWN BY	BY	TN
SECOND FLOOR PLAN	DATE:	05/22/15	
OPTION DESCRIPTION	OPTION		
A-8			
36			



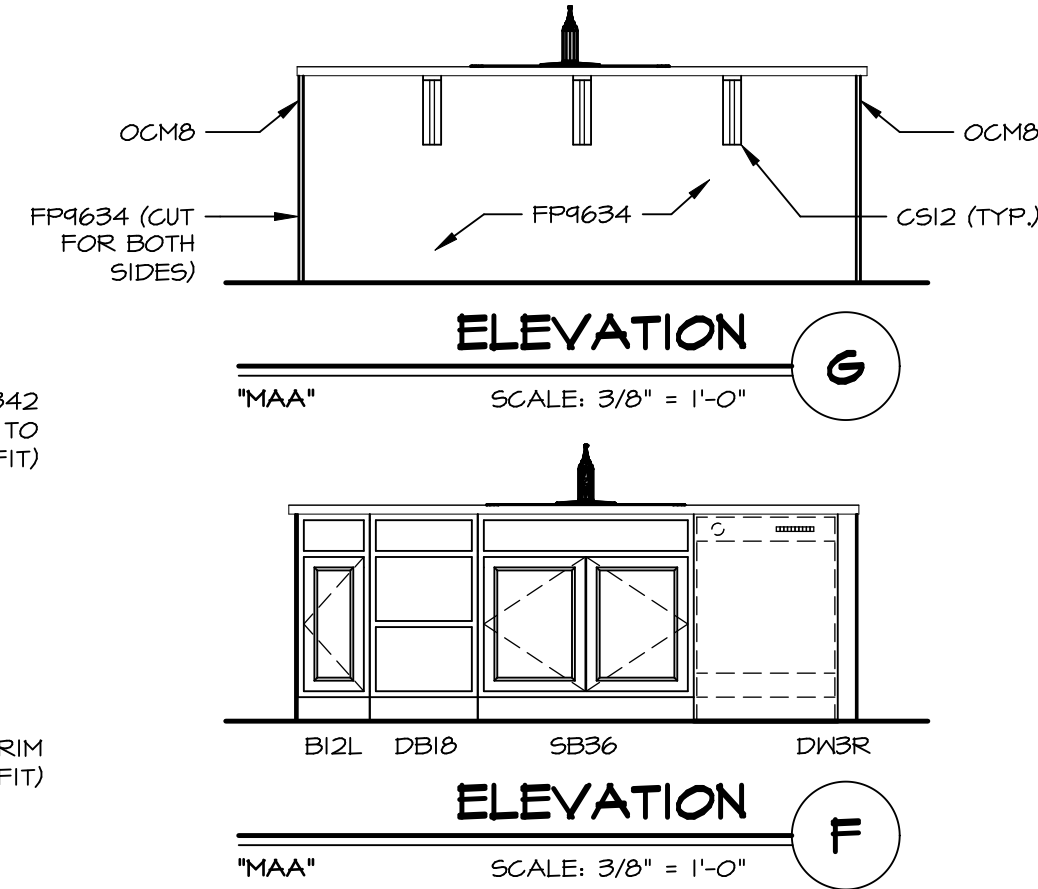
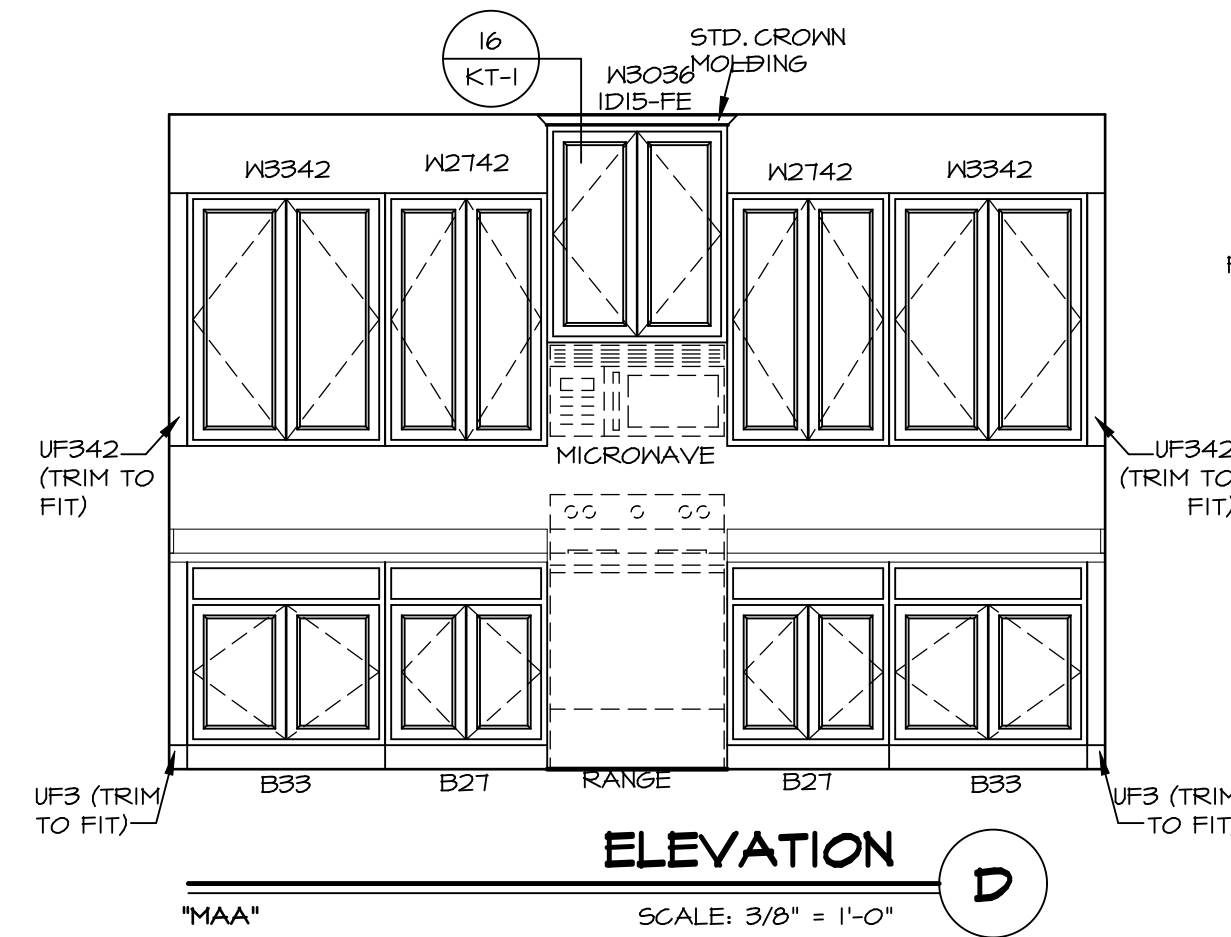
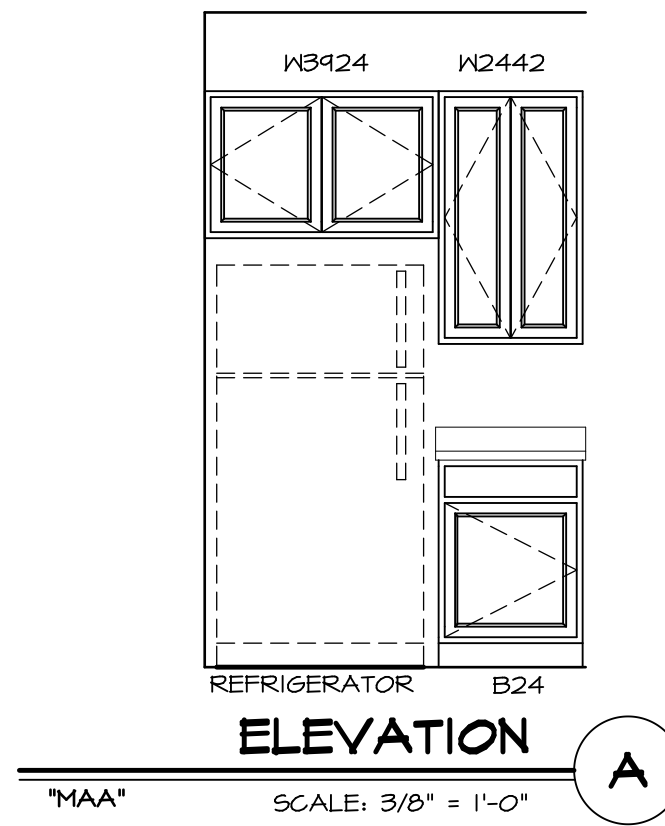
**KITCHEN COUNTERTOP
PLAN - KT-3293**

SCALE: 3/8" = 1'-0" A-12



**KITCHEN CABINET
PLAN - KC-3293**

SCALE: 3/8" = 1'-0" A-12

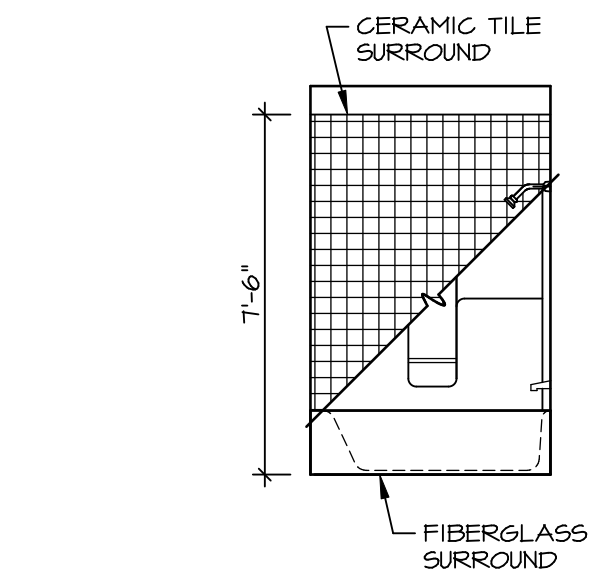


SHEET NO.	MODEL	SET NO.	DATE
A-12	NAPLES	NAPOO	
49	DRAWING TITLE	VERSION	
	KITCHEN SECTION	06	
	OPTION DESCRIPTION	OPTION	
		DATE:	05/22/15

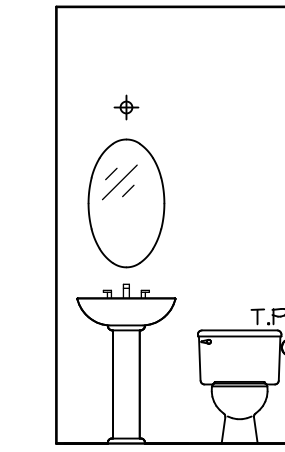
NVR
 NVR, Inc.
 Architectural Services
 Architects & Interiors
 5285 Westpark Drive, Suite 100
 Frederick, MD 21703

NVR, Inc., owner, expressly reserves its copyright in these plans. These plans are not to be reproduced, changed, copied, or otherwise used in any way without the prior written consent of NVR, Inc.

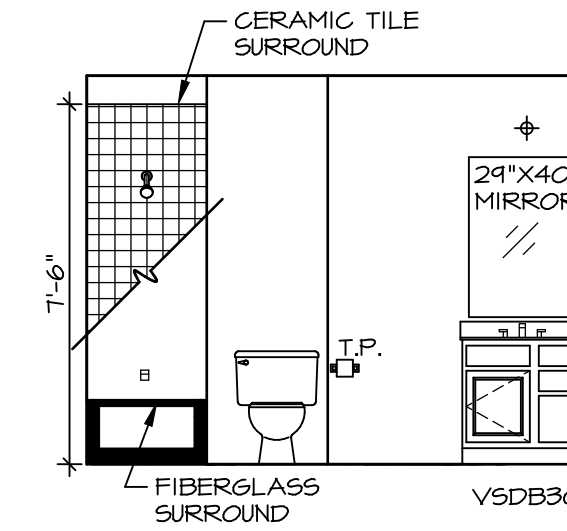
REV. NO.	DATE	REMARKS



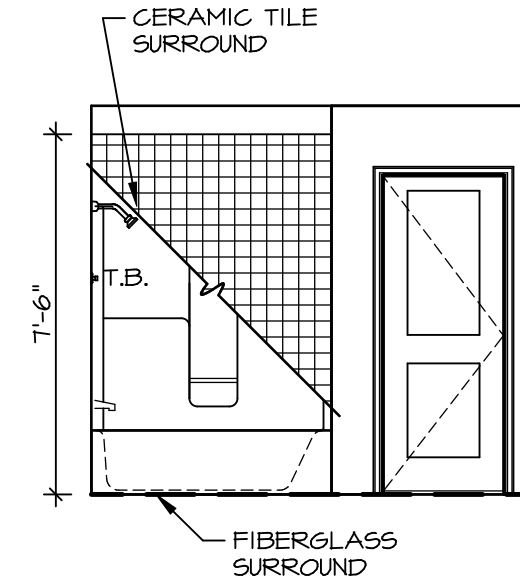
C BATH #1
SCALE: 1/4" = 1'-0"



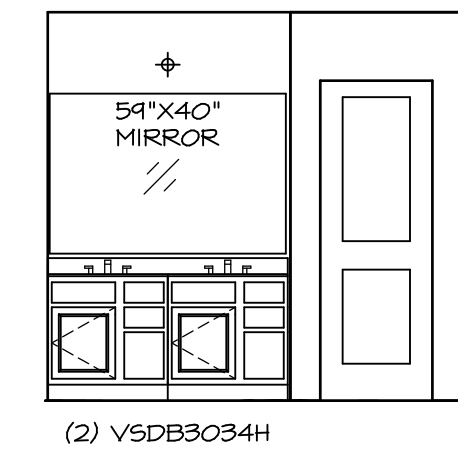
A POWDER ROOM
SCALE: 1/4" = 1'-0"



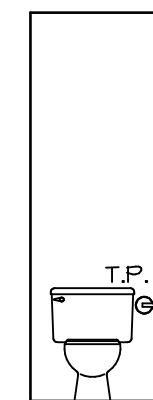
B BATH #1
SCALE: 1/4" = 1'-0"



F OWNER'S BATH
SCALE: 1/4" = 1'-0"



D OWNER'S BATH
SCALE: 1/4" = 1'-0"



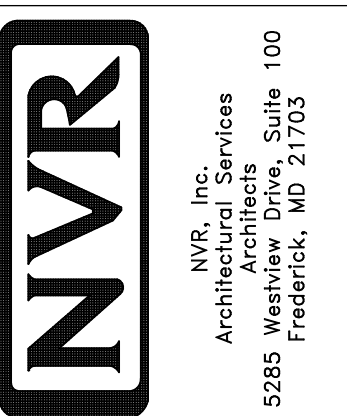
E OWNER'S BATH
SCALE: 1/4" = 1'-0"

NOTES:

1. TEMPERED GLASS SHOWER ENCLOSURE WITH SWING DOOR OR OPTIONAL SLIDING DOOR BY DIVISION
2. TUB ACCESS PANELS PROVIDED AS NEEDED, ALL MATERIALS BY DIVISION
3. REFER TO SHEET ET-2 FOR TUB AND SHOWER DETAILS.
4. ALL V5DB24-42 DRAWERS TO BE SET ON RIGHT HAND.
5. BATH ELEVATIONS ARE SHOWN PER PLAN.

REV. NO.	DATE	REMARKS
1	08/07/16	N. - DRAWING ALIGNMENT

NVR, Inc., owner, expressly reserves its copyright in these plans. These plans are not to be reproduced, changed, copied, or otherwise used in any way without the prior written consent of NVR, Inc.



MODEL	SET NO. NAPOO	VERSION 06	DRAWN BY TN	DATE: 05/22/15	OPTION
DRAWING TITLE	NAPLES BATH ELEVATIONS				
SHEET NO.	A-13				
OPTION DESCRIPTION	51				