

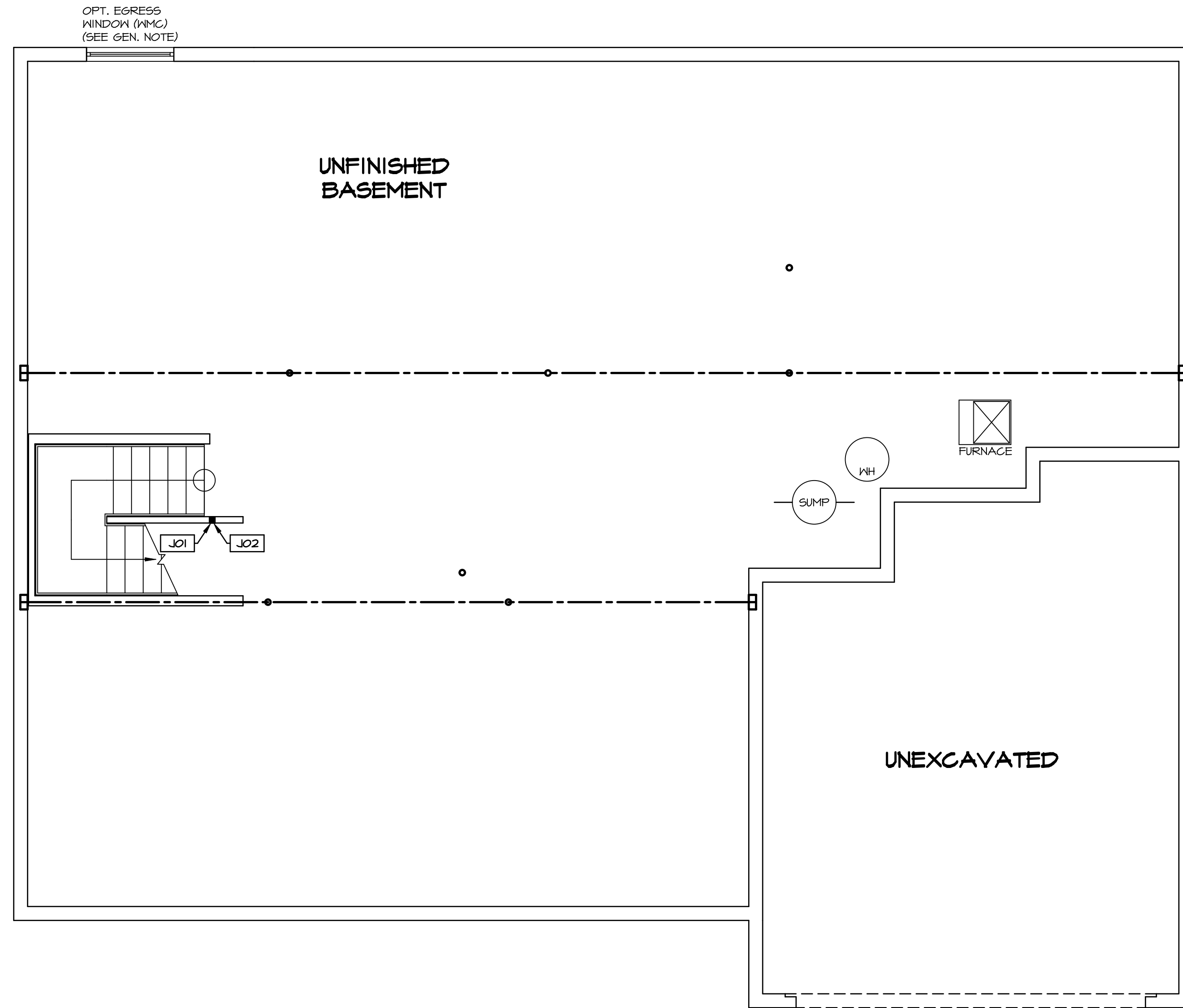
PLUMBING PLAN
 SCALE: 1/4" = 1'-0"

SHEET NO. A-5	MODEL NORMANDY	SET NO. NRMOO	VERSION 01
	DRAWING TITLE PLUMBING PLAN	DRAWN BY RJC	
	OPTION DESCRIPTION	DATE 5/14/15	OPTION
31			

NVR
 NVR, Inc.
 Architectural Services
 Architects
 5285 Westpark Drive, Suite 100
 Frederick, MD 21703

NVR, Inc., owner, expressly reserves its copyright in these plans. These plans are not to be reproduced, changed, adapted, or otherwise used in any way without the prior written consent of NVR, Inc.

REV. NO.	DATE	REMARKS



LEGEND

- BEARING WALL
- NON BEARING WALL
- INDICATES BEARING FROM POINT-LOAD ABOVE
- JACKS
- BEAM/HEADER
- PAD FOOTING
- STEEL COLUMN
- PORTAL FRAME
- JOIST/TRUSS
- LVL
- ENGINEERING PAGE NUMBER

SEE FC DETAILS FOR FRAMING CONNECTORS

- FLOOR PLAN NOTES**
- ALL HEADERS ARE (2) 2x6 w/ 2x4 WALLS OR (3) 2x6 w/ 2x6 WALLS, UNLESS OTHERWISE NOTED.
 - ALL EXTERIOR WALLS TO BE 4" AND ALL INTERIOR WALLS TO BE 3 1/2", UNLESS OTHERWISE NOTED.
 - HATCHED AREAS INDICATE DROPPED CEILINGS. ALL DROPPED CEILINGS ARE 12" UNLESS OTHERWISE NOTED.
 - SEE "BRACED WALL PANEL DETAIL SHEET" FOR SPECIAL WALL FRAMING LOCATIONS AND HEADER SIZES, IF APPLICABLE.
 - SEE STANDARD DETAIL CATEGORY "IT" SHEET(S) FOR INTERIOR TRIM DETAILS.
 - SEE ARCHITECTURAL DETAIL SHEET "AD" FOR HOUSE SPECIFIC INTERIOR TRIM OPTION TABLE.
 - ALL WINDOWS HAVE 7'-0" 1/2" HEADER HEIGHT UNLESS OTHERWISE NOTED.

- GYPSUM NOTES**
- AT GARAGE:
GYPSUM BOARD AT COMMON WALLS, CEILING, BEAM WRAPS AND SUPPORTS PER STANDARD DETAIL FA-1(b) FIRE ASSEMBLIES OR AS REQUIRED BY LOCAL CODE.
- AT STAIRS:
1/2" GYPSUM BOARD AT UNDERSIDE OF STAIRS AND WALLS IN CLOSET

BASEMENT JACK SCHEDULE

IDENTIFIER	DESCRIPTION	OPTIONS	ENG. NUM.	REMARKS
J01	JACK - 2x4 SFF STUD GRADE		B10	
J02	JACK - 2x4 SFF STUD GRADE		B22	

REVISIONS

REV. NO.	DATE	DESCRIPTION	REMARKS
1	08/07/16	NL - DRAWING ALIGNMENT	
2	11/05/16	TH - STANDARD DETAILS 3.0	
3	4/20/17	SFK - ADDED BASEMENT FLOOR PLAN JACK SCHEDULE	

NOTES:

NVR, Inc., owner, expressly reserves its copyright in these drawings. These drawings are not to be reproduced, changed, copied, or otherwise used in any way without the written consent of NVR, Inc.

NVR
Architectural Services
5285 Westover Drive
Frederick, MD 21703

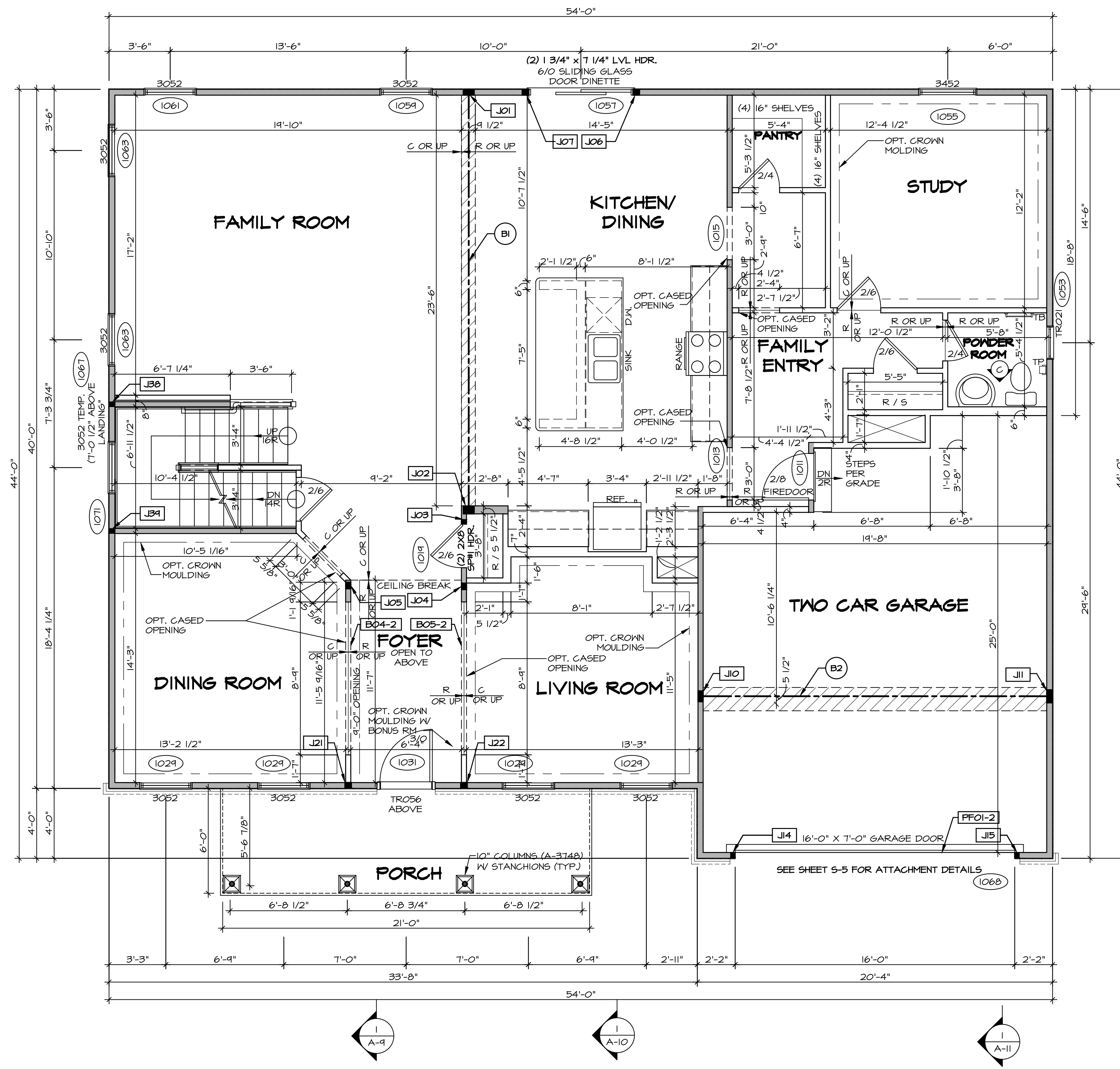
SET NO. NRM00
VERSION 01
DRAWN BY SGA
DATE: 6/29/15
OPTION

NORMANDY
DRAWING TITLE
BASEMENT FLOOR PLAN
OPTION DESCRIPTION

SHEET NO. **A-6**
34

C:\NVR\Solves\NORMANDY_NRM00_01\DCI-CH-W268\134233A\Sheet\Lot_Specific\34_A-6_BSMT_LS.dwg 08/09/19 - 9:37 am

BASEMENT FLOOR PLAN
SCALE: 1/4" = 1'-0"



FIRST FLOOR PLAN
SCALE: 1/4" = 1'-0"

LEGEND

- BEARING WALL
- NON BEARING WALL
- INDICATES BEARING FROM POINT-LOAD ABOVE
- JACKS
- BEAM/HEADER
- PAD FOOTING
- STEEL COLUMN
- PORTAL FRAME
- JOIST/TRUSS
- LVL
- ENGINEERING PAGE NUMBER

SEE FC DETAILS FOR FRAMING CONNECTORS

- FLOOR PLAN NOTES** RYAN
- ALL HEADERS ARE (2) 2x6 W/ 2x4 WALLS OR (3) 2x6 W/ 2x6 WALLS, UNLESS OTHERWISE NOTED.
 - ALL HEADERS TO HAVE (1) 2x4 OR 2x6 JACK AND KING STUD EACH END, UNLESS OTHERWISE NOTED.
 - ALL EXTERIOR WALLS TO BE 4" W/ OSB OR 3 1/2" W/ T-PLY, ALL INTERIOR WALLS TO BE 3 1/2", UNLESS OTHERWISE NOTED.
 - HATCHED AREAS INDICATE DROPPED CEILINGS. ALL DROPPED CEILINGS ARE 12" UNLESS OTHERWISE NOTED.
 - SEE "BRACED WALL PANEL DETAIL SHEET" FOR SPECIAL WALL FRAMING LOCATIONS AND HEADER SIZES, IF APPLICABLE.
 - SEE STANDARD DETAIL CATEGORY "IT" SHEET(S) FOR INTERIOR TRIM DETAILS.
 - SEE ARCHITECTURAL DETAIL SHEET "AD" FOR HOUSE SPECIFIC INTERIOR TRIM OPTION TABLE.
 - ALL WINDOWS HAVE 7'-0 1/2" HEADER HEIGHT UNLESS OTHERWISE NOTED.
 - ALL HEADERS IN NON-BEARING WALLS SHALL BE A SINGLE FLAT 2X4 OR 2X6 ATTACHED TO CRIPPLES ABOVE, UNLESS OTHERWISE NOTED.

- GYPSUM NOTES** RYAN
- AT GARAGE:**
GYPSUM BOARD AT COMMON WALLS, CEILINGS, BEAM WRAPS AND SUPPORTS PER STANDARD DETAIL FA-1(b) FIRE ASSEMBLIES OR AS REQUIRED BY LOCAL CODE.
- AT STAIRS:**
1/2" GYPSUM BOARD AT UNDERSIDE OF STAIRS AND WALLS IN CLOSET

LVL PLY TO PLY FASTENING SCHEDULE: (WHERE APPLICABLE BASED ON LVL USAGE)

- 1A - (2) PLY UP TO AND INCLUDING 11 7/8" TALL; FASTEN PLYS W/ (2) ROWS 16D NAILS AT 12" O.C.
- 2A - (2) PLY 14" TO AND INCLUDING 18" TALL (INCLUSIVE); FASTEN PLYS W/ (3) ROWS 16D NAILS AT 12" O.C.
- 3A - (2) PLY 20" TALL AND OVER; FASTEN PLYS W/ (4) ROWS 16D NAILS AT 12" O.C.
- 4A - (3) PLY UP TO AND INCLUDING 11 7/8" TALL; FASTEN PLYS W/ (2) ROWS 16D NAILS AT 12" O.C. FROM EACH SIDE
- 5A - (3) PLY 14" TO AND INCLUDING 18" TALL (INCLUSIVE); FASTEN PLYS W/ (3) ROWS 16D NAILS AT 12" O.C. FROM EACH SIDE
- 6A - (3) PLY 20" TALL AND OVER; FASTEN PLYS W/ (4) ROWS 16D NAILS AT 12" O.C. FROM EACH SIDE
- 7A - (4) PLY (ALL SIZES); FASTEN PLYS W/ (2) ROWS 1/2" DIAMETER A307 BOLTS AT 24" O.C. SEE SHOP DRAWING FOR ADDITIONAL INFORMATION.

FIELD INSTALLED FIRST FLOOR BEAM/HEADER SCHEDULE

IDENTIFIER	DESCRIPTION	LENGTH	OPTIONS	ENG. NUM.	REMARKS
B04-2	LVL - 11-4	11'-4 1/16"	SRM, SQK, SOL, ELA, ELK	1017	1A
B05-2	LVL - 11-4	11'-8 1/2"	SRM, SQK, SOL, ELA, ELK	1017	1A
B1	BEAM STEEL - W12X35	24'-2"	SR1	1021	
B2	BEAM STEEL - W12X26	20'-2 1/2"	SR1	1022	
PF01-2	LVL - 11-04	20'-0"	6CB	1043	PORTAL FRAME, 1A

FIRST FLOOR JACK SCHEDULE

IDENTIFIER	DESCRIPTION	OPTIONS	ENG. NUM.	REMARKS
JO1	JACK - (5) 2X4 SP#11		1021	
JO2	JACK - (5) 2X6 SP#11		1021	
JO3	JACK - (2) 2X4 SP# STUD GRADE		1014	
JO4	JACK - (3) 2X4 SP# STUD GRADE		1017	
JO5	JACK - (3) 2X4 SP# STUD GRADE		1017	
JO6	JACK - (3) 2X4 SP# STUD GRADE		1057	
JO7	JACK - (3) 2X4 SP# STUD GRADE		1057	
JO10	JACK - (5) 2X4 SP#11	SR1	1023	
JO11	JACK - (6) 2X4 SP#11	6CB5XC	1023	
JO14	JACK - (2) 2X4 SP# STUD GRADE	6CB, 6CF	1043	
JO15	JACK - (2) 2X4 SP# STUD GRADE	6CB, 6CF	1043	
JO16	JACK - (2) 2X4 SP# STUD GRADE	6CB, 6CF	1043	
JO21	JACK - (3) 2X4 SP# STUD GRADE	SRM, SQK, SOL, ELA, ELB, ELK	1017	
JO22	JACK - (3) 2X4 SP# STUD GRADE	SRM, SQK, SOL, ELA, ELB, ELK	1017	
JO23	JACK - (2) 2X4 SP# STUD GRADE		1007	
JO24	JACK - (2) 2X4 SP# STUD GRADE		1007	

REVISIONS

REV. NO.	DATE	DESCRIPTION
1	08/07/16	N - DRAWING ALIGNMENT
2	11/05/16	TM - STANDARD DETAILS 3.0
3	07/17/17	SL5 - T-PLY CONVERSION PROJECT

MODEL
NORMANDY ARCHITECTS

DRAWING TITLE
FIRST FLOOR PLAN

OPTION DESCRIPTION

SET NO. NRM000
VERSION 01
DRAWN BY SGA
DATE: 6/29/15
OPTION

PROJECT
1342353A Street Lot 1

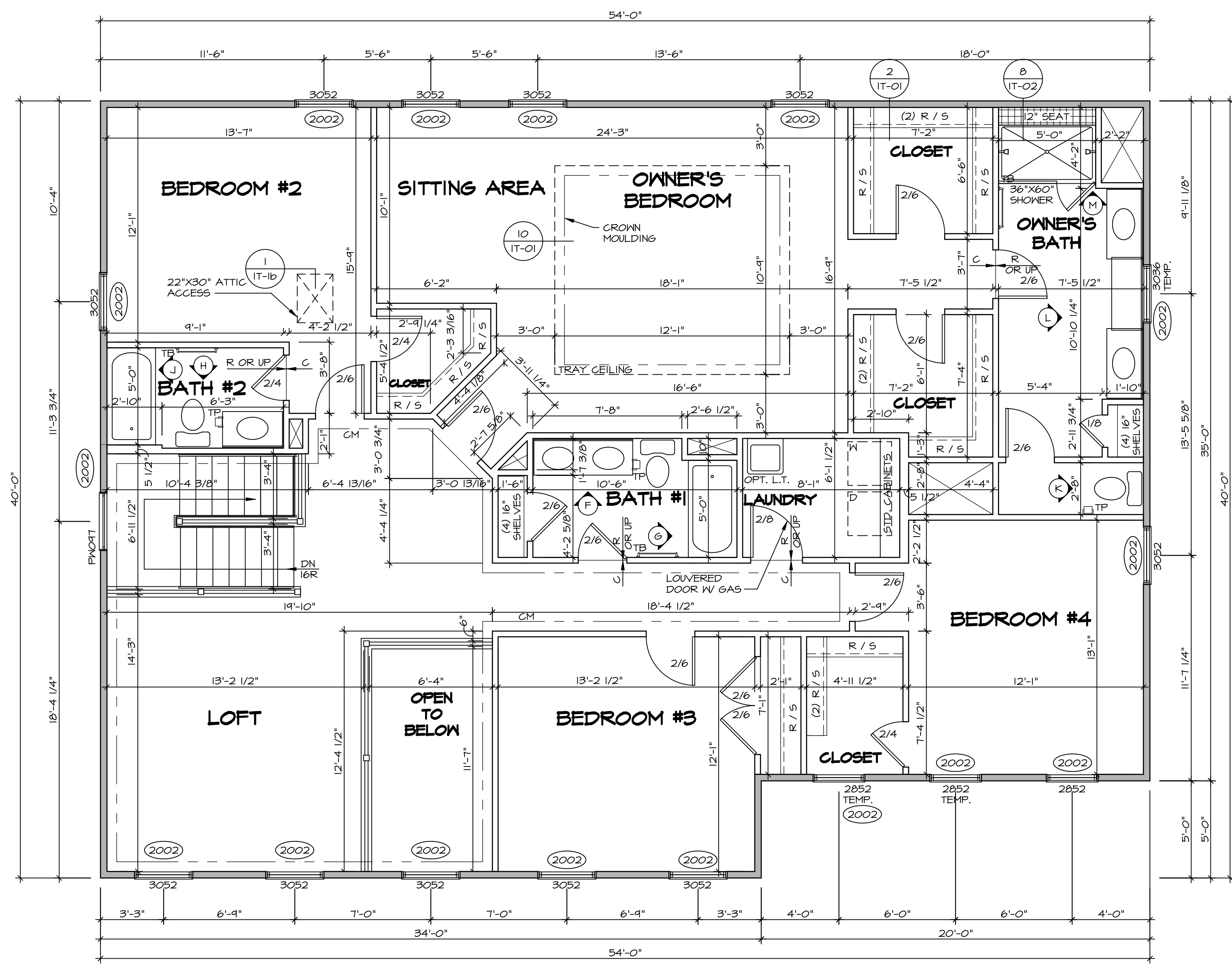
ARCHITECT
NVR, Inc.
Architectural Services
Suite 100
5285 Westpark Drive
Frederick, MD 21703

DATE
08/09/19

SCALE
1/4" = 1'-0"

SHEET NO.
A-7

TOTAL SHEETS
35



LEGEND

- ▬ BEARING WALL
- ▬ NON BEARING WALL
- ⊗ INDICATES BEARING FROM POINT-LOAD ABOVE
- ⌞ JACKS
- ⊙ BEAM/HEADER
- ⊞ PAD FOOTING
- ◇ STEEL COLUMN
- ⊠ PORTAL FRAME
- ⊞ JOIST/TRUSS
- ▬ LVL
- ⊞ ENGINEERING PAGE NUMBER

SEE FC DETAILS FOR FRAMING CONNECTORS

- FLOOR PLAN NOTES** RYAN
- ALL HEADERS ARE (2) 2x6 w/ 2x4 WALLS OR (3) 2x6 w/ 2x6 WALLS, UNLESS OTHERWISE NOTED.
 - ALL HEADERS TO HAVE (1) 2x4 OR 2x6 JACK AND KING STUD EACH END, UNLESS OTHERWISE NOTED.
 - ALL EXTERIOR WALLS TO BE 4" w/ OSB OR 3 1/2" w/ T-PLY, ALL INTERIOR WALLS TO BE 3 1/2", UNLESS OTHERWISE NOTED.
 - HATCHED AREAS INDICATE DROPPED CEILINGS, ALL DROPPED CEILINGS ARE 12" UNLESS OTHERWISE NOTED.
 - SEE "BRACED WALL PANEL DETAIL SHEET" FOR SPECIAL WALL FRAMING LOCATIONS AND HEADER SIZES, IF APPLICABLE.
 - SEE STANDARD DETAIL CATEGORY "11" SHEET(S) FOR INTERIOR TRIM DETAILS.
 - SEE ARCHITECTURAL DETAIL SHEET "AD" FOR HOUSE SPECIFIC INTERIOR TRIM OPTION TABLE.
 - ALL WINDOWS HAVE 7'-0 1/2" HEADER HEIGHT UNLESS OTHERWISE NOTED.
 - ALL HEADERS IN NON-BEARING WALLS SHALL BE A SINGLE FLAT 2x4 OR 2x6 ATTACHED TO CRIPPLES ABOVE, UNLESS OTHERWISE NOTED.

SECOND FLOOR JACK SCHEDULE

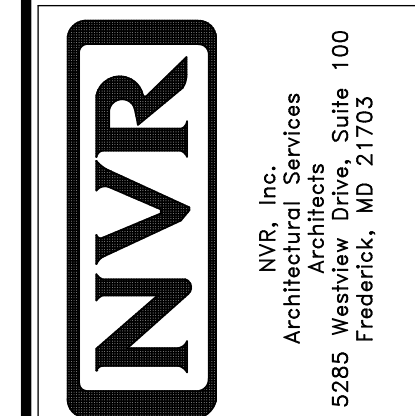
IDENTIFIER	DESCRIPTION	OPTIONS	ENG. NUM.	REMARKS

SECOND FLOOR PLAN
SCALE: 1/4" = 1'-0"

REMARKS

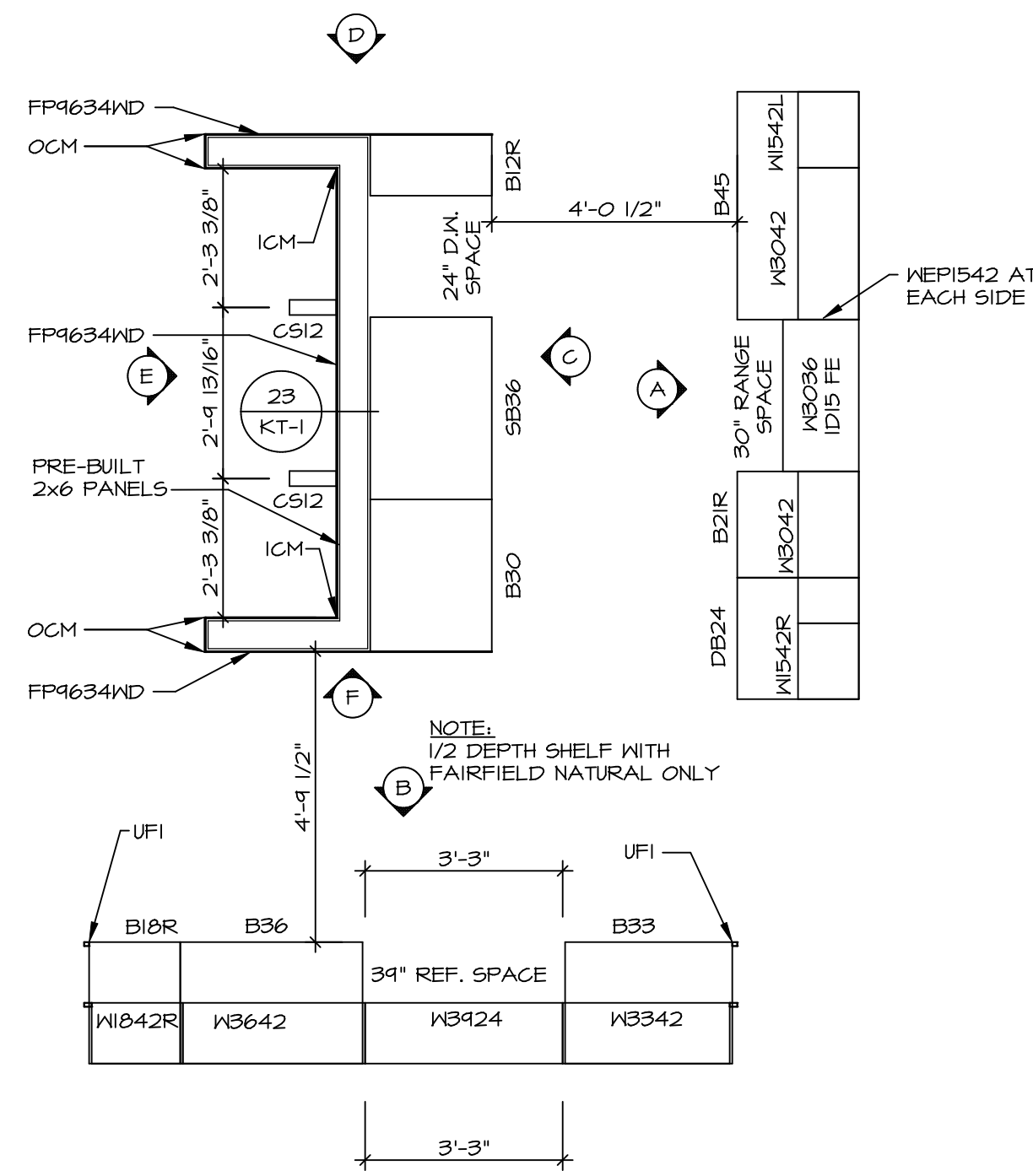
REV. NO.	DATE	DESCRIPTION
1	08/07/16	NL - DRAWING ALIGNMENT
2	11/05/16	TH - STANDARD DETAILS 3.0
3	07/17/17	SLS - T-PLY CONVERSION PROJECT

NVR, Inc., owner, expressly reserves its copyright in these plans. These plans are not to be reproduced, changed, copied in any way, or used for any other purpose without the written consent of NVR, Inc.

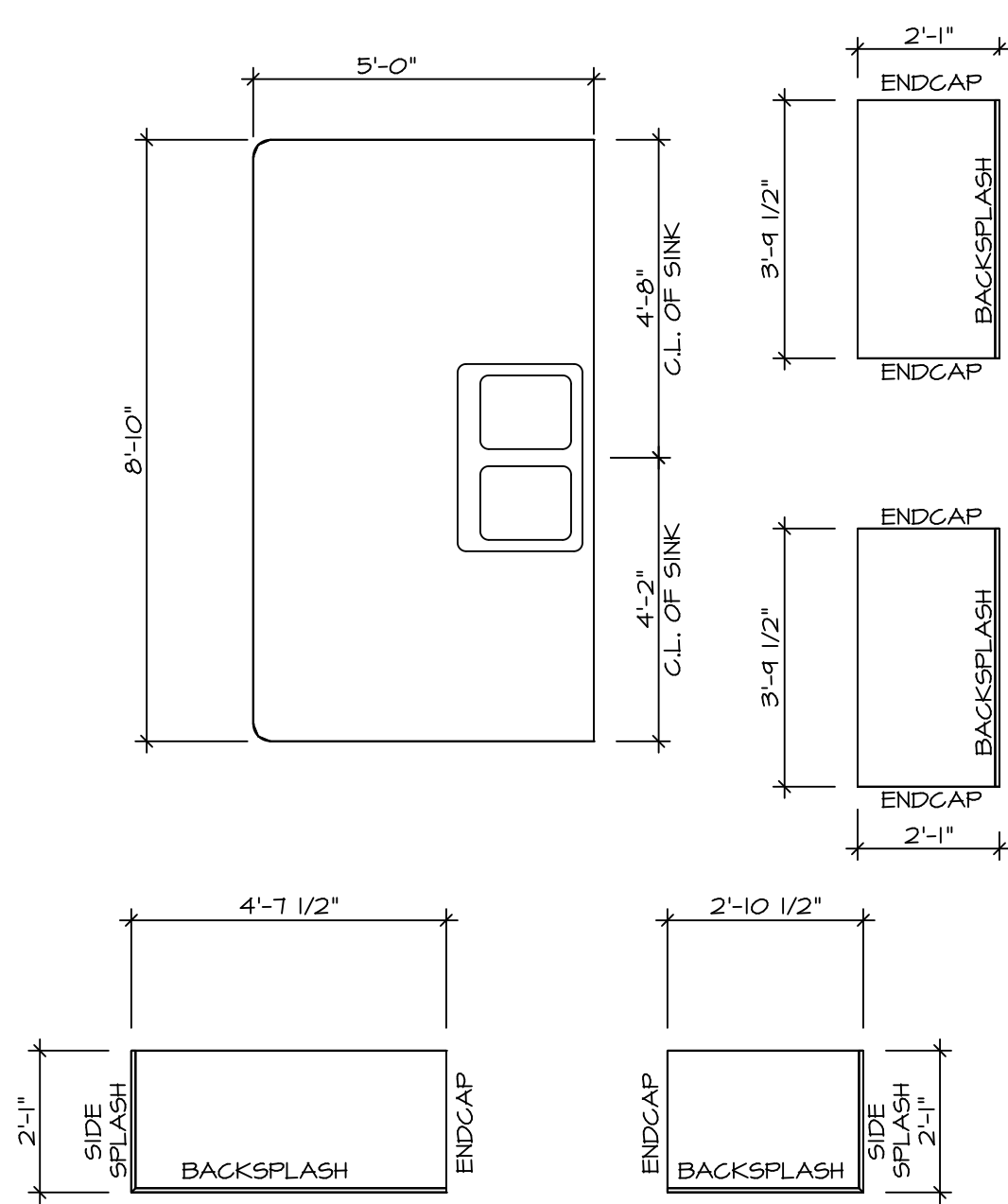


SET NO. NRM00	VERSION 01
DRAWN BY SGA	DATE: 6/29/15
OPTION	

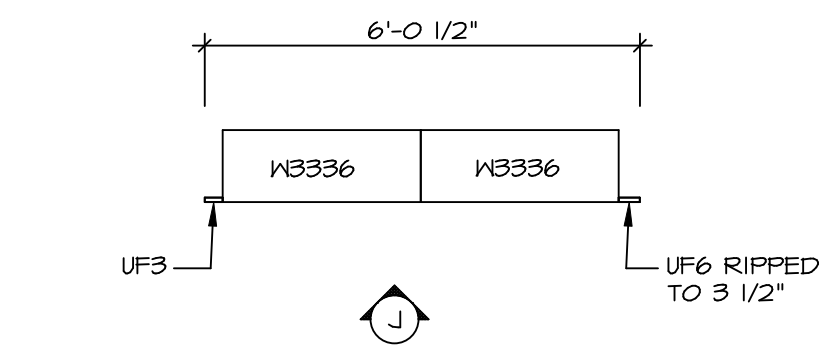
MODEL	NORMANDY
DRAWING TITLE	SECOND FLOOR PLAN
OPTION DESCRIPTION	



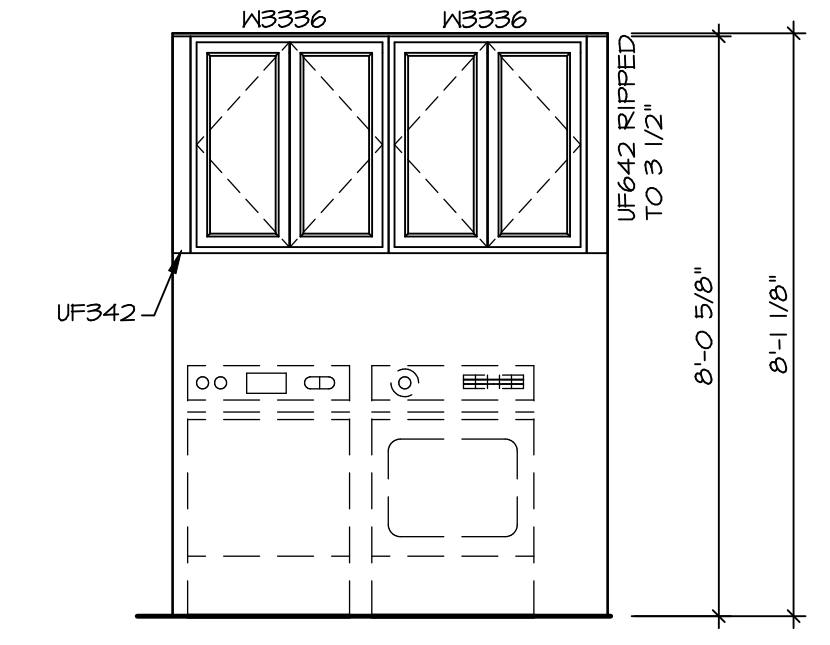
1 **KITCHEN CABINET PLAN / KC-3230**
SCALE: 3/8" = 1'-0"



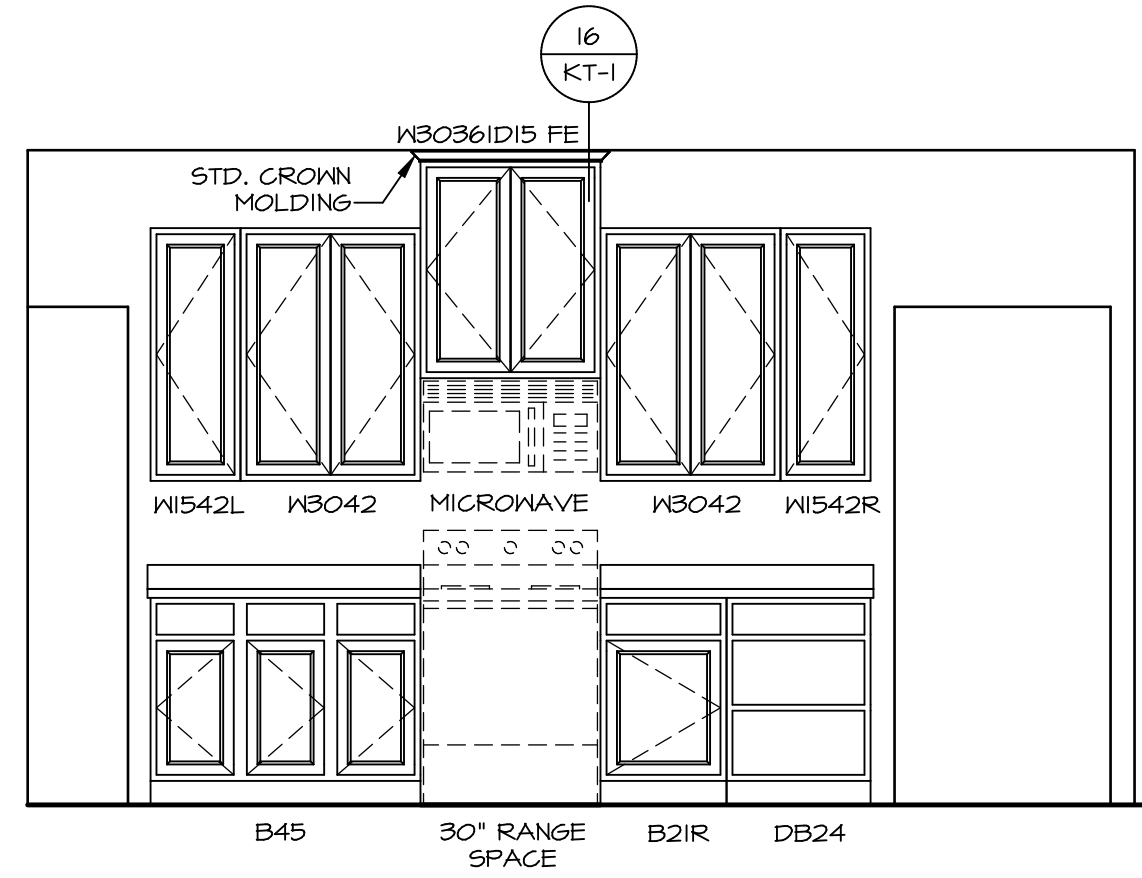
2 **KITCHEN COUNTERTOP PLAN / KT-3230**
SCALE: 3/8" = 1'-0"



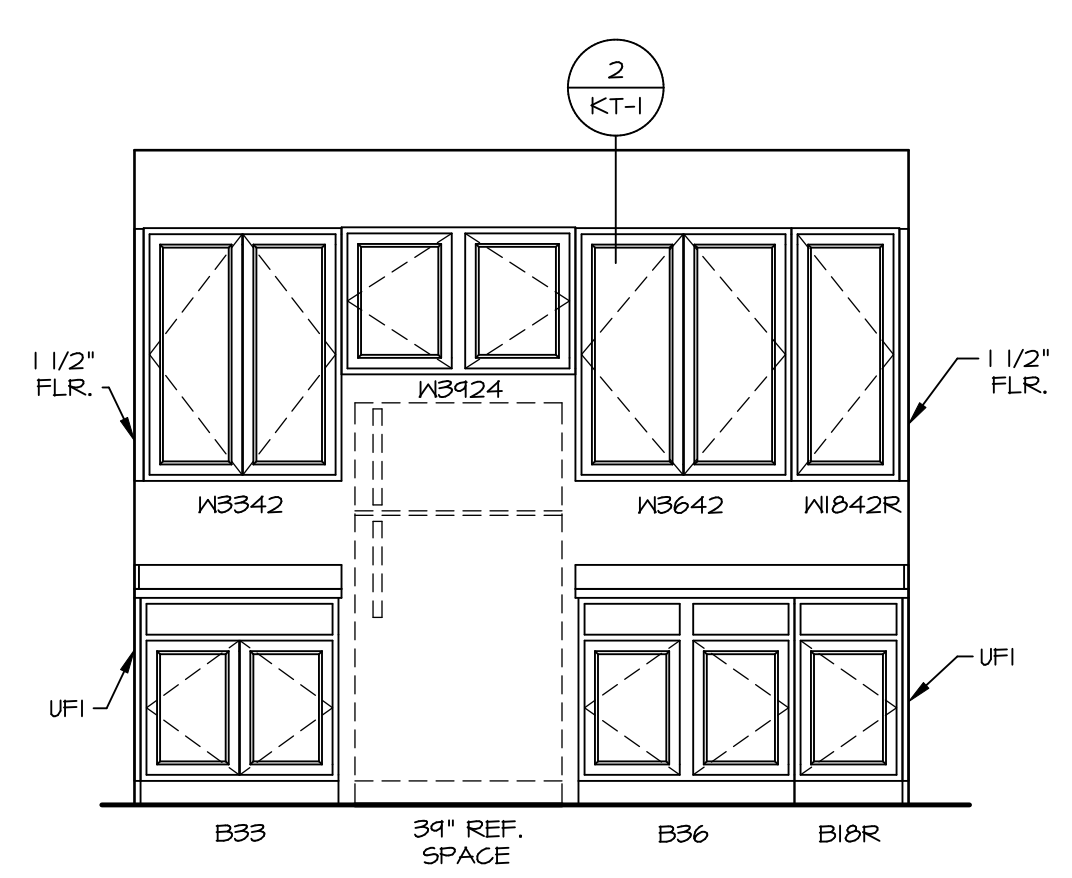
6 **LAUNDRY CABINET PLAN KC-3281**
SCALE: 3/8" = 1'-0"



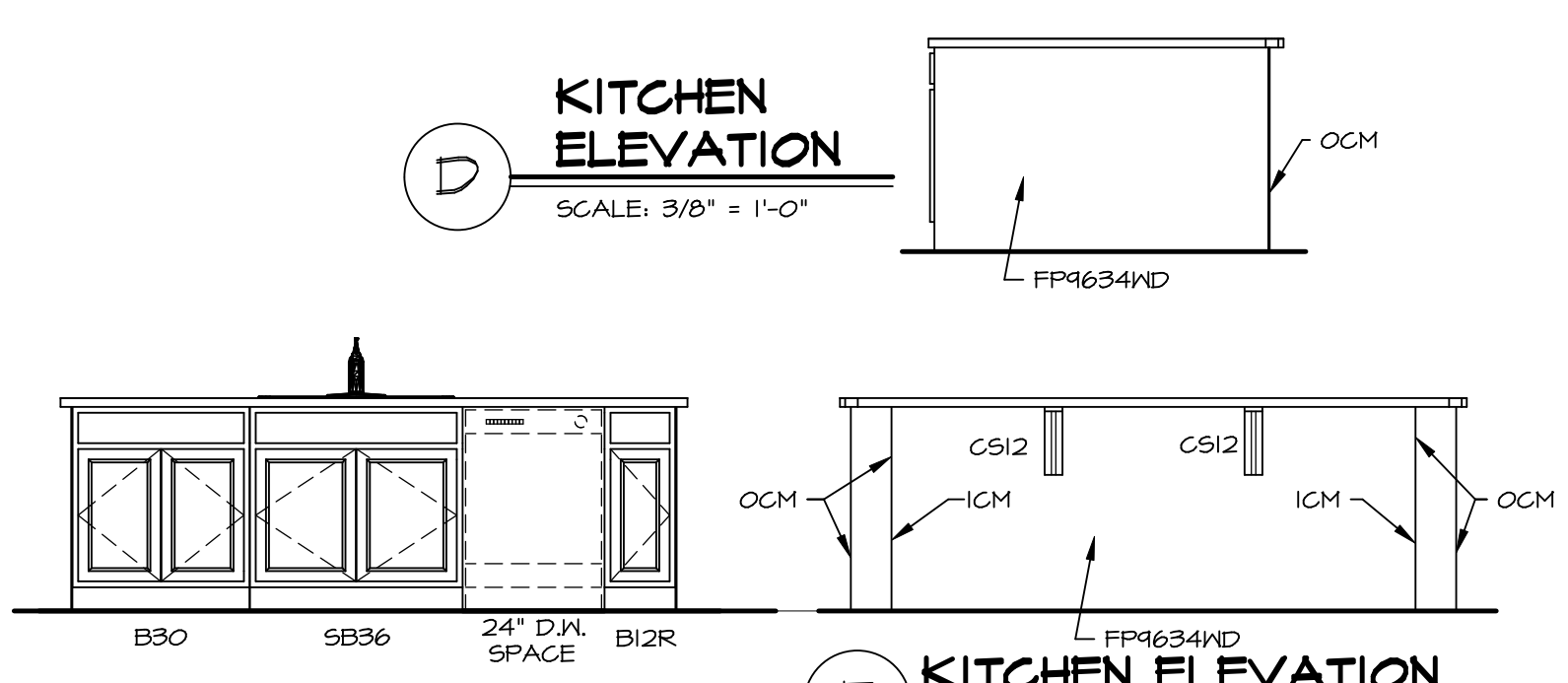
7 **LAUNDRY CABINET ELEVATION**
SCALE: 3/8" = 1'-0"



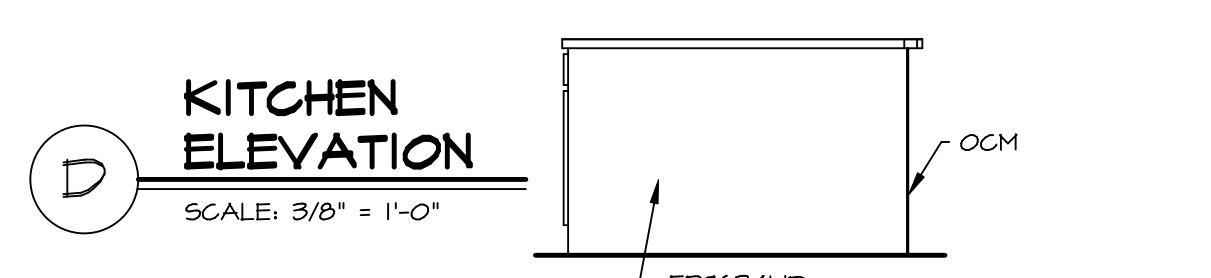
A **KITCHEN ELEVATION**
SCALE: 3/8" = 1'-0"



B **KITCHEN ELEVATION**
SCALE: 3/8" = 1'-0"

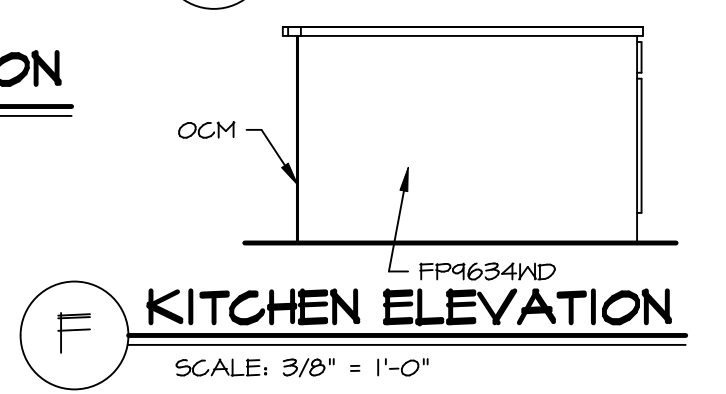


C **KITCHEN ELEVATION**
SCALE: 3/8" = 1'-0"



D **KITCHEN ELEVATION**
SCALE: 3/8" = 1'-0"

E **KITCHEN ELEVATION**
SCALE: 3/8" = 1'-0"



F **KITCHEN ELEVATION**
SCALE: 3/8" = 1'-0"

REV. NO.	DATE	REMARKS
1	11/05/16	TRV - STANDARD DETAILS 5.0

NVR, Inc., owner, expressly reserves its copyright in these plans. These plans are not to be reproduced, changed, copied, or otherwise used in any way without the written consent of NVR, Inc.

NVR
Architectural Services
5285 Westover Hills
Frederick, MD 21703

MODEL	NORMANDY
DRAWING TITLE	KITCHEN LAYOUT
OPTION DESCRIPTION	
SHEET NO.	A-13
SET NO.	NRM00
VERSION	01
DRAWN BY	RJC
DATE	6/29/15
OPTION	