

FLOOR PLAN NOTES

1. ALL HEADERS ARE (2) 2x6 w/ 2x4 WALLS OR (3) 2x6 w/ 2x6 WALLS, UNLESS OTHERWISE NOTED.
2. ALL HEADERS TO HAVE (1) 2x4 OR 2x6 JACK EACH END, UNLESS OTHERWISE NOTED.
3. ALL EXTERIOR WALLS TO BE 4" AND ALL INTERIOR WALLS TO BE 3 1/2", UNLESS OTHERWISE NOTED.
4. HATCHED AREAS INDICATE DROPPED CEILINGS. ALL DROPPED CEILINGS ARE 12' UNLESS OTHERWISE NOTED.
5. SEE "BRACED WALL PANEL DETAIL SHEET" FOR SPECIAL WALL FRAMING LOCATIONS AND HEADER SIZES, IF APPLICABLE.
6. ALL WINDOWS HAVE 1'-0" 1/2" HEADER HEIGHT UNLESS OTHERWISE NOTED.

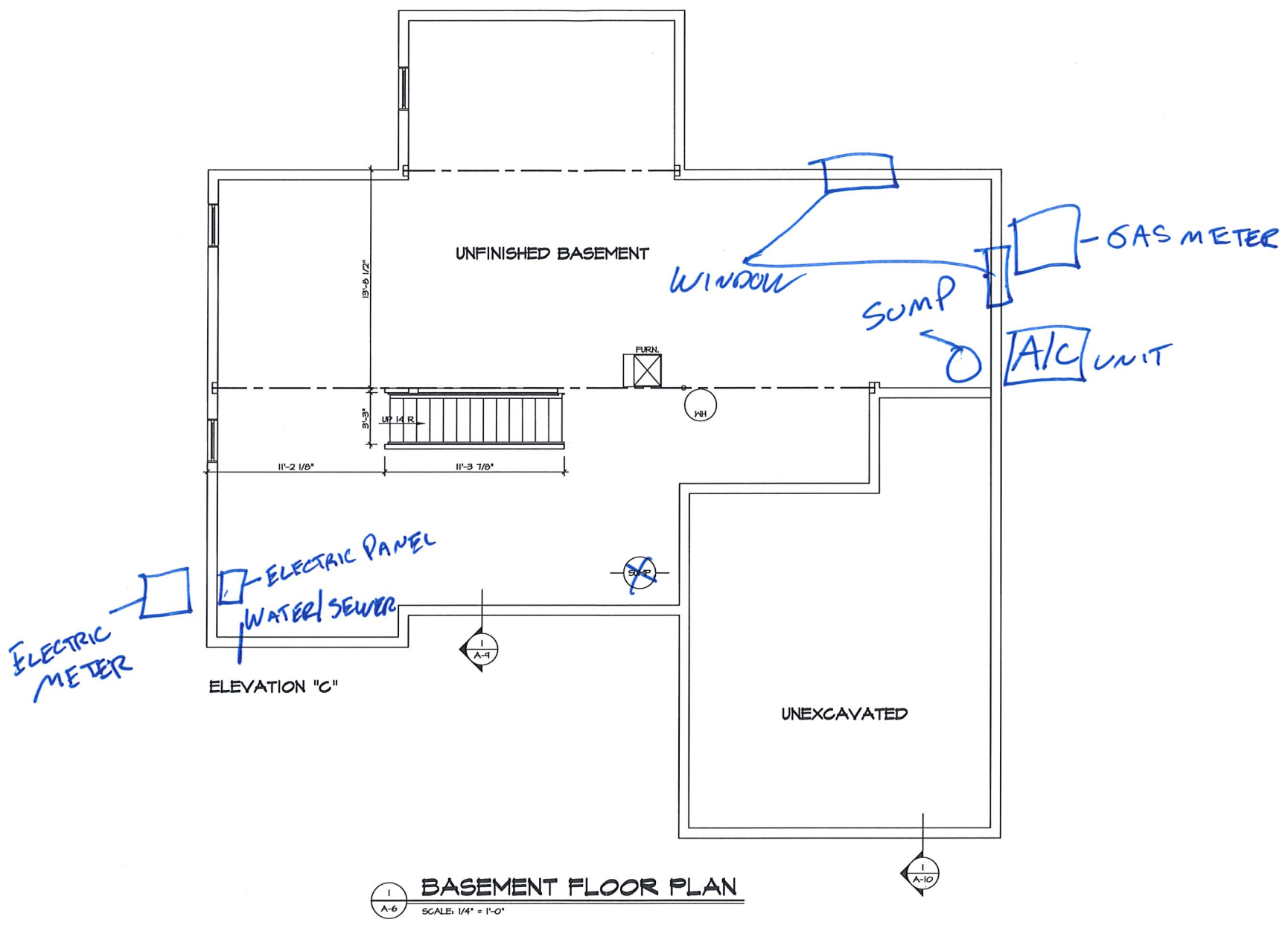
GYP SUM NOTES

AT GARAGE:
GYPSUM BOARD AT COMMON WALLS, CEILING, BEAM WRAPS AND SUPPORTS AS REQUIRED BY LOCAL CODE.

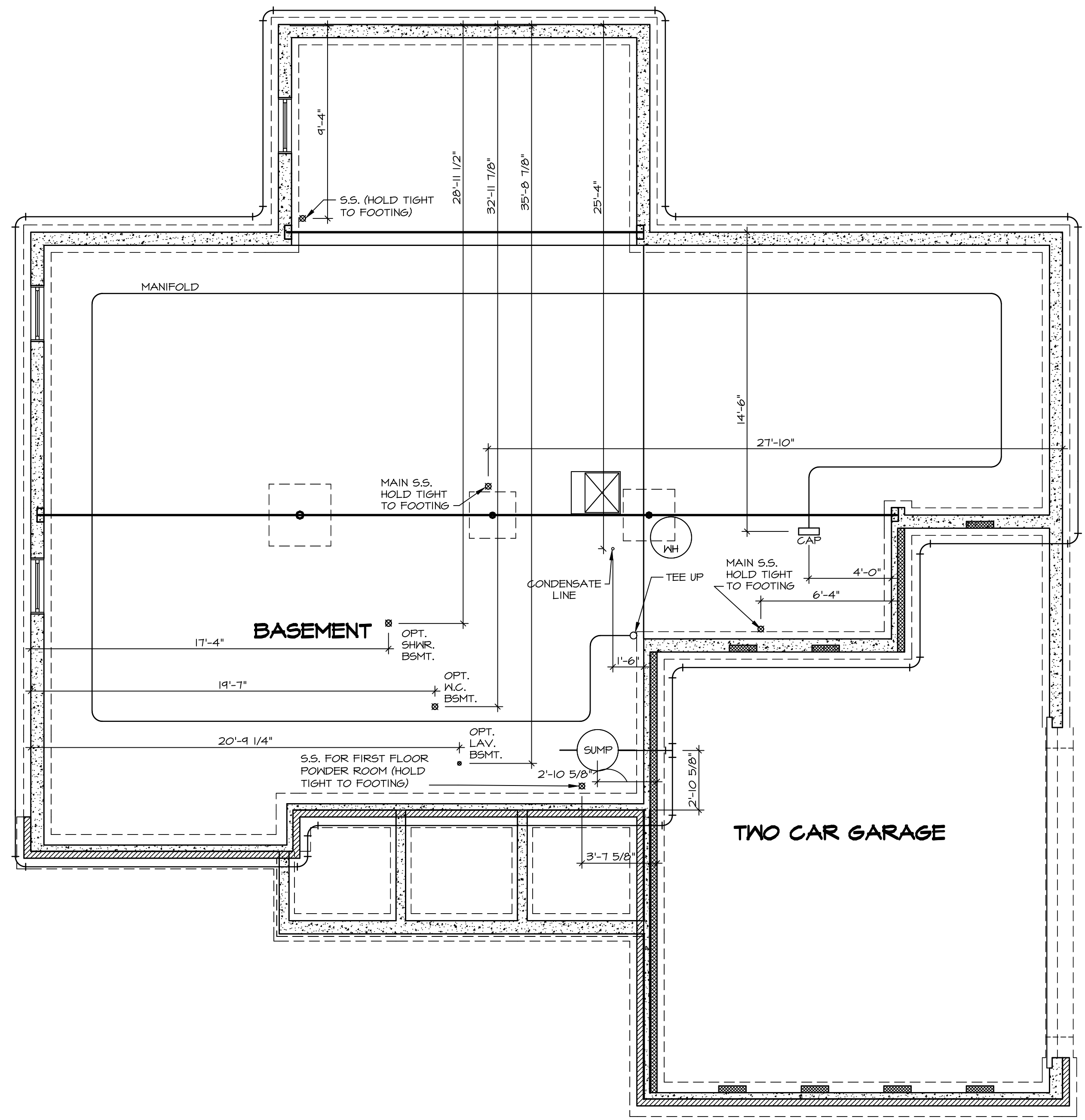
AT STAIRS:
1/2" GYPSUM BOARD AT UNDERSIDE OF STAIRS AND WALLS IN CLOSET

LEGEND

- BEARING WALL
- - - NON BEARING WALL
- ⊗ INDICATES BEARING FROM POINT-LOAD ABOVE
- J JACKS
- B BEAM/HEADER
- F PAD FOOTING
- C STEEL COLUMN
- X PORTAL FRAME
- X JOIST/TRUSS
- LVL

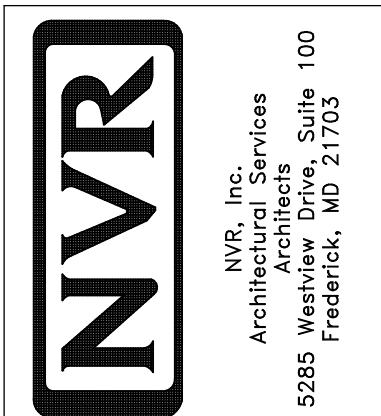


| | | | | |
|--|---|----------------------|---|---------|
| SHEET NO. A-6 | MODEL VICTORIA FALLS | SET NO. VCFOO | REVISIONS | REMARKS |
| | DRAWING TITLE BASEMENT FLOOR PLAN | VERSION 02 | 1 06/25/16 N.E. - DRAWING ALIGNMENT | |
| OPTION DESCRIPTION 63 | | DRAWN BY | 2 07/20/17 TH - STANDARD DETAILS B/O | |
| | | DATE: | | |
| | | OPTION | | |
| <p>NVR, Inc., owner, expressly disclaims any and all liability for errors or omissions in these plans. These plans are not to be used for any other project without the written consent of NVR, Inc.</p> | | | | |
| <p>NVR NVR, Inc. Architectural Services 5285 Washview Drive, Suite 100 Frederick, MD 21703</p> | | | | |
| <p>IN:\DWG\17A-5848\1001\2018_2nd\101\17A-5848_VICTORIA_FALLS_VCFOO_02\ELC_P_CH_M57A183_A-6_BSM1_US.DWG 08/16/18 - 2:55 PM</p> | | | | |



1 PLUMBING PLAN
A-5 SCALE: 1/4" = 1'-0"

| | | | | | |
|---------------------------------|---------------------------------------|-------------------|----------|------|---------|
| SHEET NO. A-5 | MODEL VICTORIA FALLS | SET NO. YGFOO | REV. NO. | DATE | REMARKS |
| | DRAWING TITLE PLUMBING PLAN | VERSION 02 | | | |
| OPTION DESCRIPTION 61 | | DRAWN BY | | | |
| | | DATE: | | | |
| | | OPTION | | | |



NVR, Inc., owner, expressly reserves its copyright in these plans. These plans are not to be reproduced, changed, adapted in any way, or used for any purpose not intended by NVR, Inc. without the written consent of NVR, Inc.

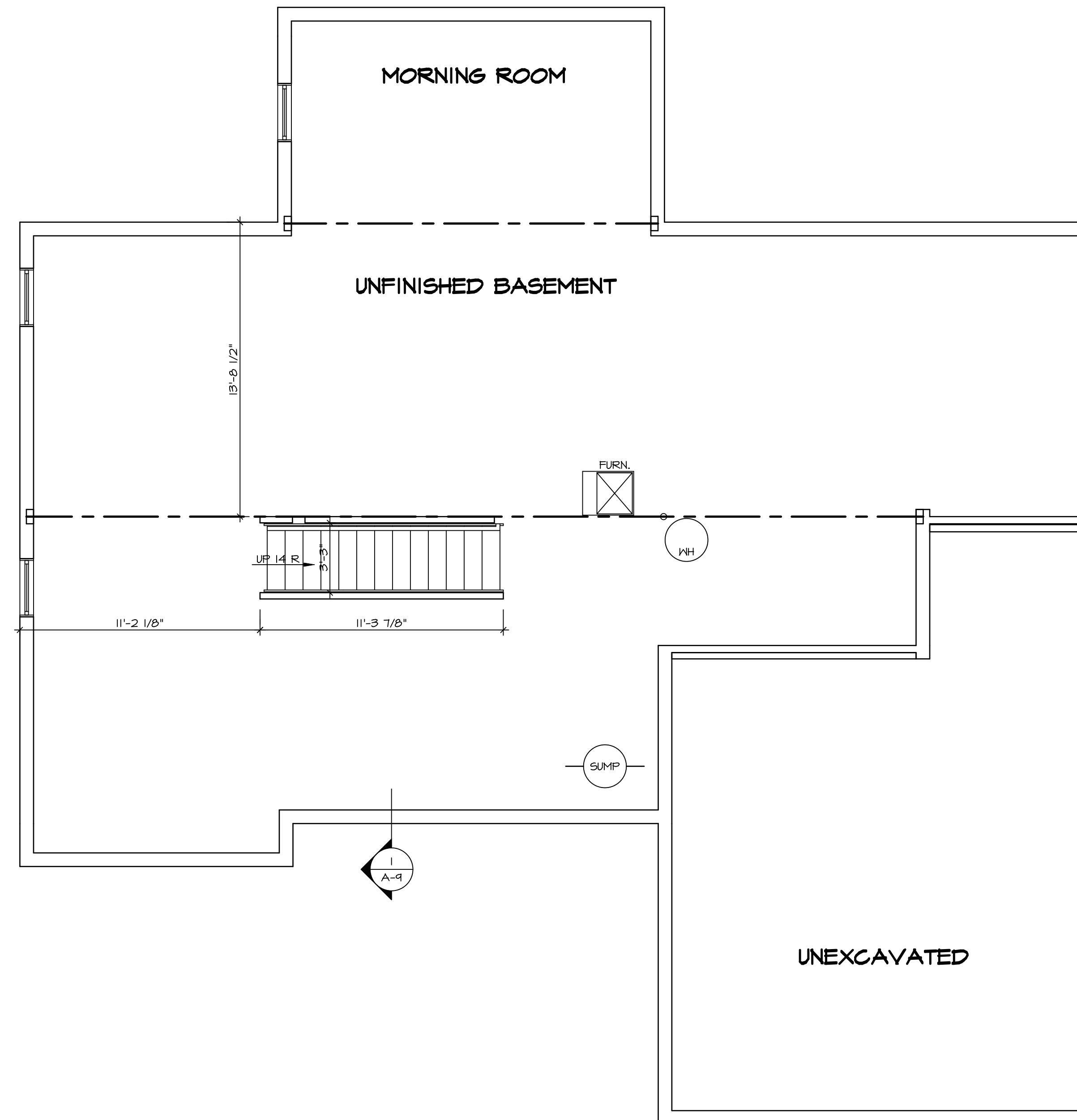
FLOOR PLAN NOTES

1. ALL HEADERS ARE (2) 2x6 w/ 2x4 WALLS OR (3) 2x6 w/ 2x6 WALLS, UNLESS OTHERWISE NOTED.
2. ALL HEADERS TO HAVE (1) 2x4 OR 2x6 JACK EACH END, UNLESS OTHERWISE NOTED.
3. ALL EXTERIOR WALLS TO BE 4" AND ALL INTERIOR WALLS TO BE 3 1/2", UNLESS OTHERWISE NOTED.
4. HATCHED AREAS INDICATE DROPPED CEILINGS. ALL DROPPED CEILINGS ARE 12' UNLESS OTHERWISE NOTED.
5. SEE "BRACED WALL PANEL DETAIL SHEET" FOR SPECIAL WALL FRAMING LOCATIONS AND HEADER SIZES, IF APPLICABLE.
6. SEE STANDARD DETAIL CATEGORY "IT" SHEET(S) FOR INTERIOR TRIM DETAILS.
7. SEE ARCHITECTURAL DETAIL SHEET "AD" FOR HOUSE SPECIFIC INTERIOR TRIM OPTION TABLE.
8. ALL WINDOWS HAVE 7'-0" 1/2" HEADER HEIGHT UNLESS OTHERWISE NOTED.

GYP SUM NOTES

AT GARAGE:
GYPSUM BOARD AT COMMON WALLS, CEILINGS, BEAM WRAPS AND SUPPORTS PER STANDARD DETAIL FA-1(b) FIRE ASSEMBLIES OR AS REQUIRED BY LOCAL CODE.

AT STAIRS:
1/2" GYPSUM BOARD AT UNDERSIDE OF STAIRS AND WALLS IN CLOSET



BASEMENT FLOOR PLAN
SCALE: 1/4" = 1'-0"

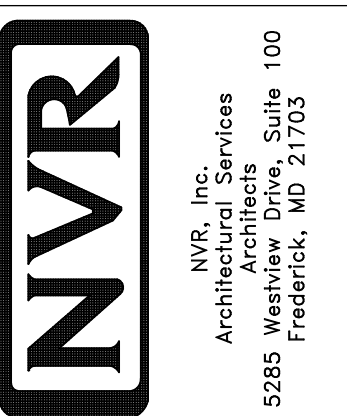
LEGEND

| | |
|--|---|
| | BEARING WALL |
| | NON BEARING WALL |
| | INDICATES BEARING FROM POINT-LOAD ABOVE |
| | JACKS |
| | BEAM/HEADER |
| | PAD FOOTING |
| | STEEL COLUMN |
| | PORTAL FRAME |
| | JOIST/TRUSS |
| | LVL |
| | ENGINEERING PAGE NUMBER |

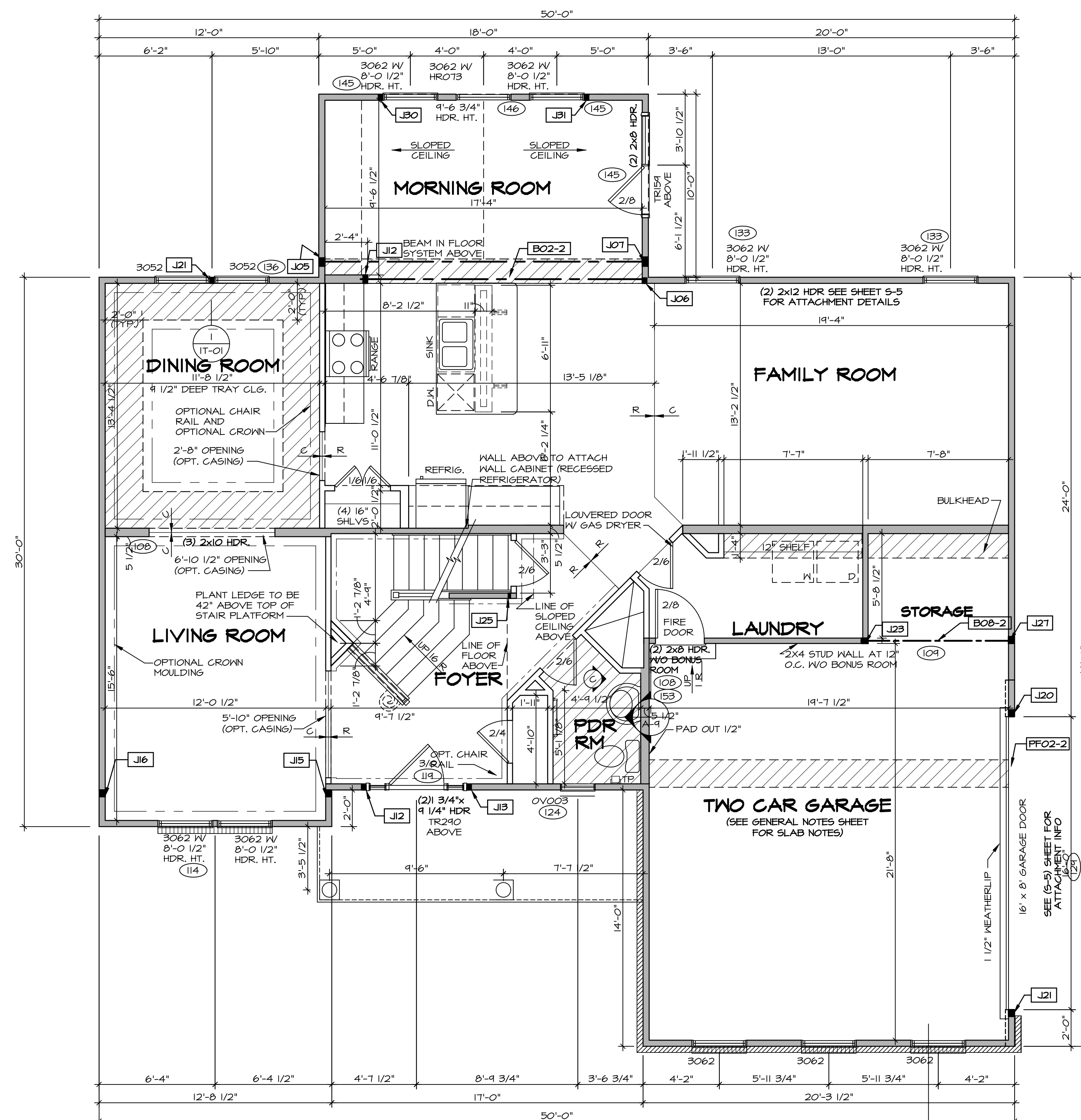
SEE FC DETAILS FOR FRAMING CONNECTORS

| REV. NO. | DATE | REMARKS |
|----------|----------|---------------------------|
| 1 | 08/25/16 | N.L. - DRAWING ALIGNMENT |
| 2 | 01/23/17 | TM - STANDARD DETAILS 3.0 |

NVR, Inc., owner, expressly reserves its copyright in these plans. These plans are not to be reproduced, changed, copied, or otherwise used in any way without the written consent of NVR, Inc.



| | |
|--------------------|---------------------|
| MODEL | VICTORIA FALLS |
| DRAWING TITLE | BASEMENT FLOOR PLAN |
| OPTION DESCRIPTION | |
| SHEET NO. | A-6 |
| OPTION | 63 |



FIRST FLOOR PLAN
SCALE: 1/4" = 1'-0"

LVL PLY TO PLY FASTENING SCHEDULE: (WHERE APPLICABLE BASED ON LVL USAGE)

- 1A - (2) PLY UP TO AND INCLUDING 11 7/8" TALL; FASTEN PLYS W/ (2) ROWS 16D NAILS AT 12" O.C.
- 2A - (2) PLY 14" TO AND INCLUDING 18" TALL (INCLUSIVE); FASTEN PLYS W/ (3) ROWS 16D NAILS AT 12" O.C.
- 3A - (2) PLY 20" TALL AND OVER; FASTEN PLYS W/ (4) ROWS 16D NAILS AT 12" O.C.
- 4A - (3) PLY UP TO AND INCLUDING 11 7/8" TALL; FASTEN PLYS W/ (2) ROWS 16D NAILS AT 12" O.C. FROM EACH SIDE
- 5A - (3) PLY 14" TO AND INCLUDING 18" TALL (INCLUSIVE); FASTEN PLYS W/ (3) ROWS 16D NAILS AT 12" O.C. FROM EACH SIDE
- 6A - (3) PLY 20" TALL AND OVER; FASTEN PLYS W/ (4) ROWS 16D NAILS AT 12" O.C. FROM EACH SIDE
- 7A - (4) PLY (ALL SIZES); FASTEN PLYS W/ (2) ROWS 1/2" DIAMETER A307 BOLTS AT 24" O.C. SEE SHOP DRAWING FOR ADDITIONAL INFORMATION.

FIRST FLOOR BEAM/HEADER SCHEDULE

| IDENTIFIER | DESCRIPTION | LENGTH | OPTIONS | ENG. NUM. | REMARKS |
|------------|-------------|------------|----------|-----------|---------------------|
| B02-2 | LVL - 11-04 | 15'-6 1/2" | MAA | 142 | 1A, FIELD INSTALLED |
| B08-2 | LVL - 04-04 | 8'-4" | Z9U | 104 | 1A, FIELD INSTALLED |
| PF02-2 | LVL - 14 | 14'-8 1/2" | Z9U, GCC | 124 | 2A, PORTAL FRAME |

FIRST FLOOR JACK SCHEDULE

| IDENTIFIER | DESCRIPTION | OPTIONS | ENG. NUM. | REMARKS |
|------------|--------------------------------|--------------------|-----------|-------------------|
| J05 | JACK - (4) 2X4 SFP# | MAA, ZMZ | 143 | |
| J06 | JACK - (2) 2X4 SFP# STUD GRADE | | | |
| J07 | JACK - (4) 2X4 SFP# | | 143 | |
| J12 | JACK - (2) 2X6 SFP# | MAA, ZMZ | 142 | |
| J13 | JACK - (2) 2X4 SFP# STUD GRADE | ELC | 111 | |
| J15 | JACK - (3) 2X4 SFP# STUD GRADE | ELC, EVA | 200 | |
| J16 | JACK - (3) 2X4 SFP# STUD GRADE | ELC, EVA | 200 | |
| J20 | JACK - (3) 2X4 SFP# STUD GRADE | GCC, Z9U | 155 | |
| J21 | JACK - (2) 2X4 SFP# STUD GRADE | MAA | 136 | |
| J21 | JACK - (3) 2X4 SFP# STUD GRADE | GCC, Z9U | 155, 164 | |
| J23 | JACK - (3) 2X4 SFP# STUD GRADE | ZRG | 104 | |
| J25 | JACK - 2X4 SFP# STUD GRADE | FBA | | |
| J27 | JACK - (3) 2X4 SFP# STUD GRADE | ZRG | 153 | |
| J30 | JACK - (2) 2X4 SFP# STUD GRADE | MAA, ZMZ, SRM, SGK | 145 | FULL HEIGHT STUDS |
| J31 | JACK - (2) 2X4 SFP# STUD GRADE | MAA, ZMZ, SRM, SGK | 145 | FULL HEIGHT STUDS |

- FLOOR PLAN NOTES**
- ALL HEADERS ARE (2) 2x6 w/ 2x4 WALLS OR (3) 2x6 w/ 2x6 WALLS, UNLESS OTHERWISE NOTED.
 - ALL HEADERS TO HAVE (1) 2x4 OR 2x6 JACK EACH END, UNLESS OTHERWISE NOTED.
 - ALL EXTERIOR WALLS TO BE 4" AND ALL INTERIOR WALLS TO BE 3 1/2", UNLESS OTHERWISE NOTED.
 - HATCHED AREAS INDICATE DROPPED CEILING. ALL DROPPED CEILING ARE 12" UNLESS OTHERWISE NOTED.
 - SEE "BRACED WALL PANEL DETAIL SHEET" FOR SPECIAL WALL FRAMING LOCATIONS AND HEADER SIZES, IF APPLICABLE.
 - SEE STANDARD DETAIL CATEGORY "IT" SHEET(S) FOR INTERIOR TRIM DETAILS.
 - SEE ARCHITECTURAL DETAIL SHEET "AD" FOR HOUSE SPECIFIC INTERIOR TRIM OPTION TABLE.
 - ALL WINDOWS HAVE 7'-0 1/2" HEADER HEIGHT UNLESS OTHERWISE NOTED.

- GYPSON NOTES**
- AT GARAGE:
GYPSUM BOARD AT COMMON WALLS, CEILING, BEAM WRAPS AND SUPPORTS PER STANDARD DETAIL FA-1(b) FIRE ASSEMBLIES OR AS REQUIRED BY LOCAL CODE.
- AT STAIRS:
1/2" GYPSUM BOARD AT UNDERSIDE OF STAIRS AND WALLS IN CLOSET

LEGEND

| | |
|--|---|
| | BEARING WALL |
| | NON BEARING WALL |
| | INDICATES BEARING FROM POINT-LOAD ABOVE JACKS |
| | BEAM/HEADER |
| | PAD FOOTING |
| | STEEL COLUMN |
| | PORTAL FRAME |
| | JOIST/TRUSS |
| | LVL |
| | ENGINEERING PAGE NUMBER |

SEE FC DETAILS FOR FRAMING CONNECTORS

MODEL: VICTORIA FALLS
DRAWING TITLE: FIRST FLOOR PLAN
SHEET NO.: A-7

SET NO.: VCF00
VERSION: 02
DRAWN BY:
DATE:
OPTION:

REVISIONS:

| REV. NO. | DATE | DESCRIPTION |
|----------|----------|---------------------------|
| 1 | 08/25/16 | N.L. - DRAWING ALIGNMENT |
| 2 | 01/23/17 | TH - STANDARD DETAILS 3.0 |

REMARKS:

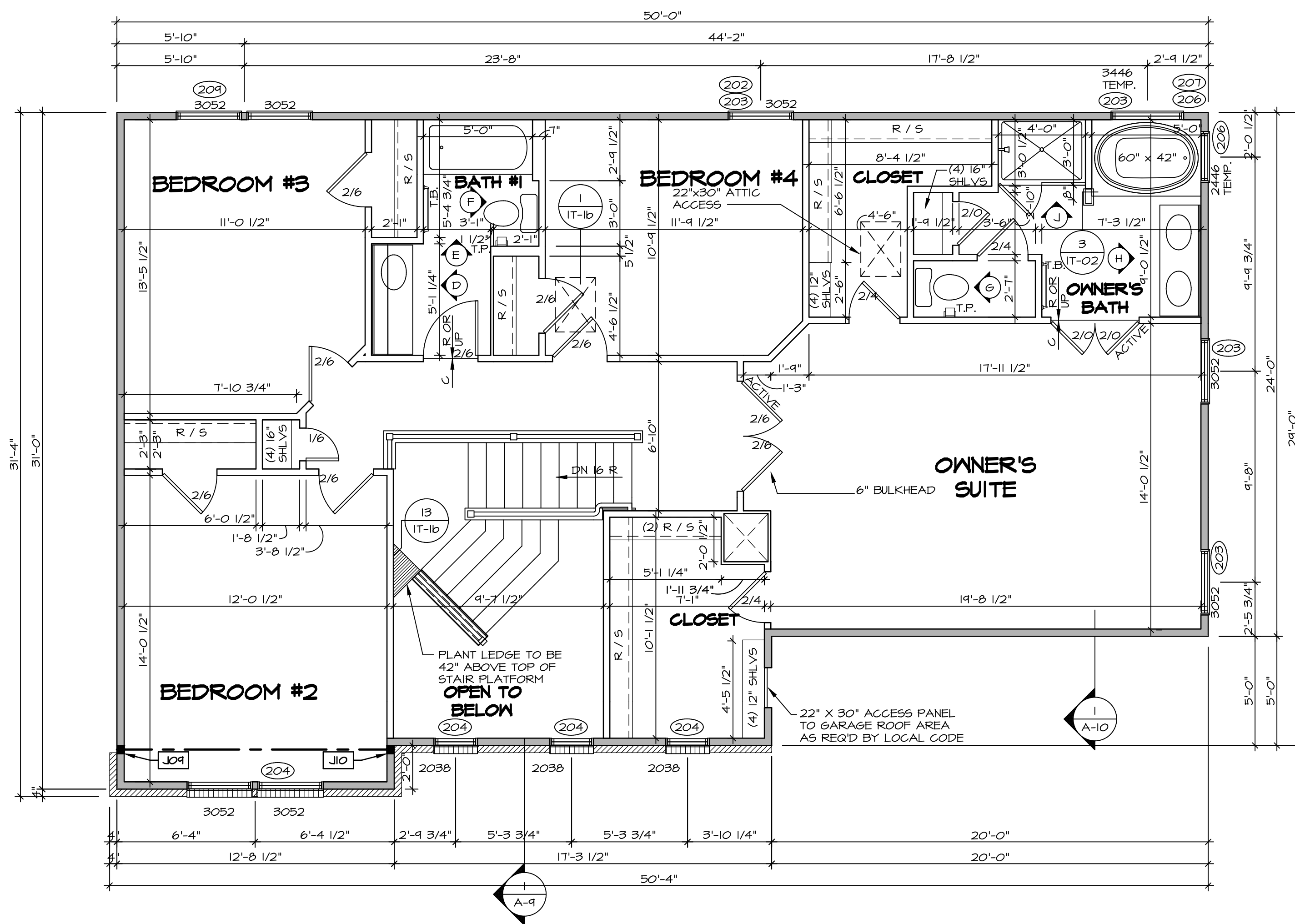
NVR, Inc., owner, expressly reserves its copyright in these plans. These plans are not to be reproduced, changed, copied, or otherwise used in any way without the prior written consent of NVR, Inc.

NVR
Architectural Services
5285 Westpark Drive, Suite 100
Frederick, MD 21703

DATE: 11/01/18
SCALE: 1/4" = 1'-0"

| SECOND FLOOR JACK SCHEDULE | | | | |
|----------------------------|-------------------------------|---------|-----------|---------|
| IDENTIFIER | DESCRIPTION | OPTIONS | ENG. NUM. | REMARKS |
| J04 | JACK - (3) 2X4 SPF STUD GRADE | ELC | 200 | |
| J10 | JACK - (3) 2X4 SPF STUD GRADE | ELC | 200 | |

| SECOND FLOOR BEAM/HEADER SCHEDULE | | | | | |
|-----------------------------------|-------------|--------|---------|-----------|---------|
| IDENTIFIER | DESCRIPTION | LENGTH | OPTIONS | ENG. NUM. | REMARKS |



SECOND FLOOR PLAN
SCALE: 1/4" = 1'-0"

- FLOOR PLAN NOTES**
- ALL HEADERS ARE (2) 2x6 w/ 2x4 WALLS OR (3) 2x6 w/ 2x6 WALLS, UNLESS OTHERWISE NOTED.
 - ALL HEADERS TO HAVE (1) 2x4 OR 2x6 JACK EACH END, UNLESS OTHERWISE NOTED.
 - ALL EXTERIOR WALLS TO BE 4" AND ALL INTERIOR WALLS TO BE 3 1/2", UNLESS OTHERWISE NOTED.
 - HATCHED AREAS INDICATE DROPPED CEILING. ALL DROPPED CEILING ARE 12" UNLESS OTHERWISE NOTED.
 - SEE "BRACED WALL PANEL DETAIL SHEET" FOR SPECIAL WALL FRAMING LOCATIONS AND HEADER SIZES, IF APPLICABLE.
 - SEE STANDARD DETAIL CATEGORY "11" SHEET(S) FOR INTERIOR TRIM DETAILS.
 - SEE ARCHITECTURAL DETAIL SHEET "AD" FOR HOUSE SPECIFIC INTERIOR TRIM OPTION TABLE.
 - ALL WINDOWS HAVE 1'-0 1/2" HEADER HEIGHT UNLESS OTHERWISE NOTED.

LEGEND

| | |
|--|---|
| | BEARING WALL |
| | NON BEARING WALL |
| | INDICATES BEARING FROM POINT-LOAD ABOVE JACKS |
| | BEAM/HEADER |
| | PAD FOOTING |
| | STEEL COLUMN |
| | PORTAL FRAME |
| | JOIST/TRUSS |
| | LVL |
| | ENGINEERING PAGE NUMBER |

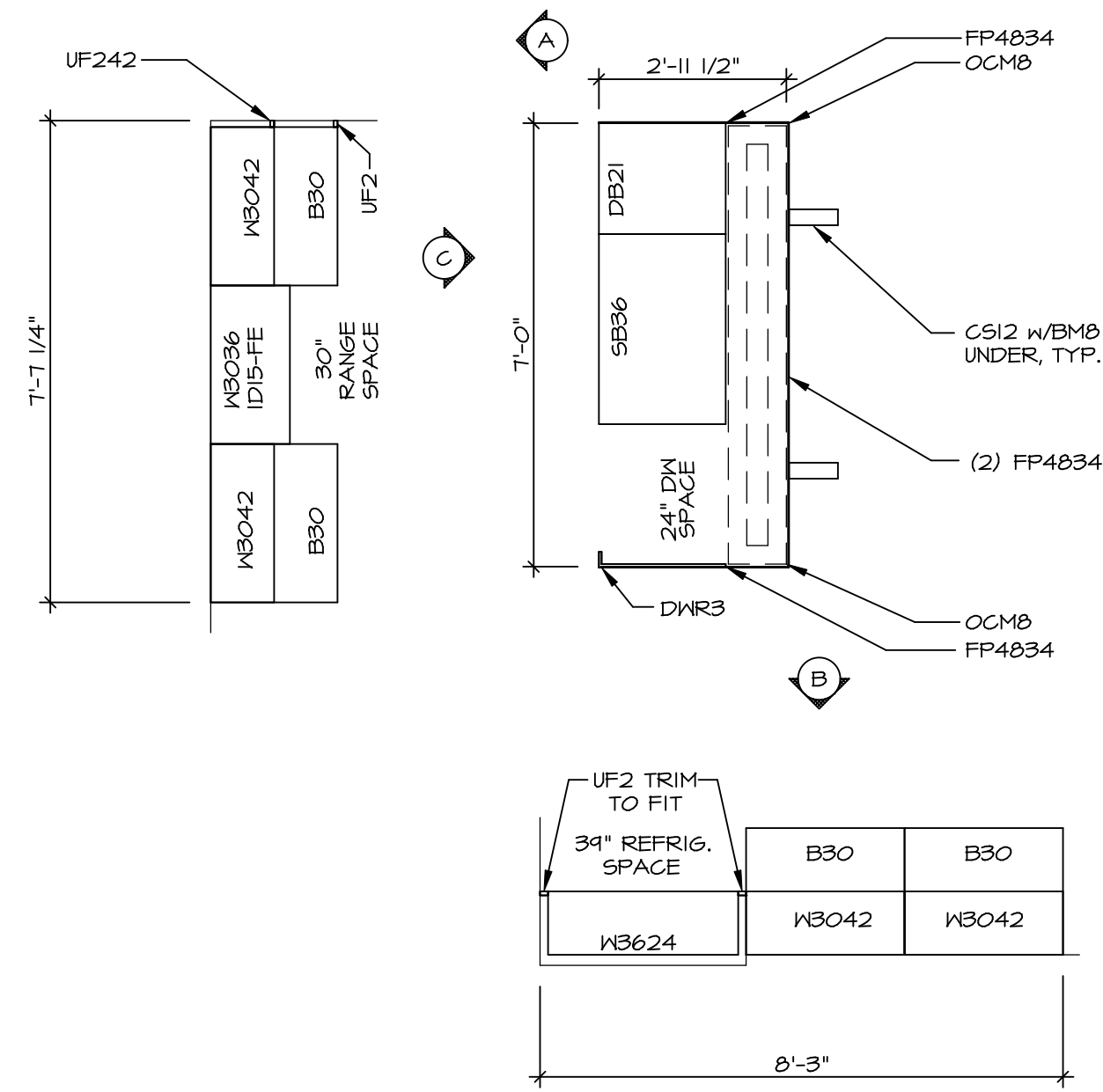
SEE FC DETAILS FOR FRAMING CONNECTORS

SHEET NO. **A-8**
 MODEL: VICTORIA FALLS
 DRAWING TITLE: SECOND FLOOR PLAN
 SET NO. VCF00
 VERSION 02
 DRAWN BY:
 DATE:
 OPTION

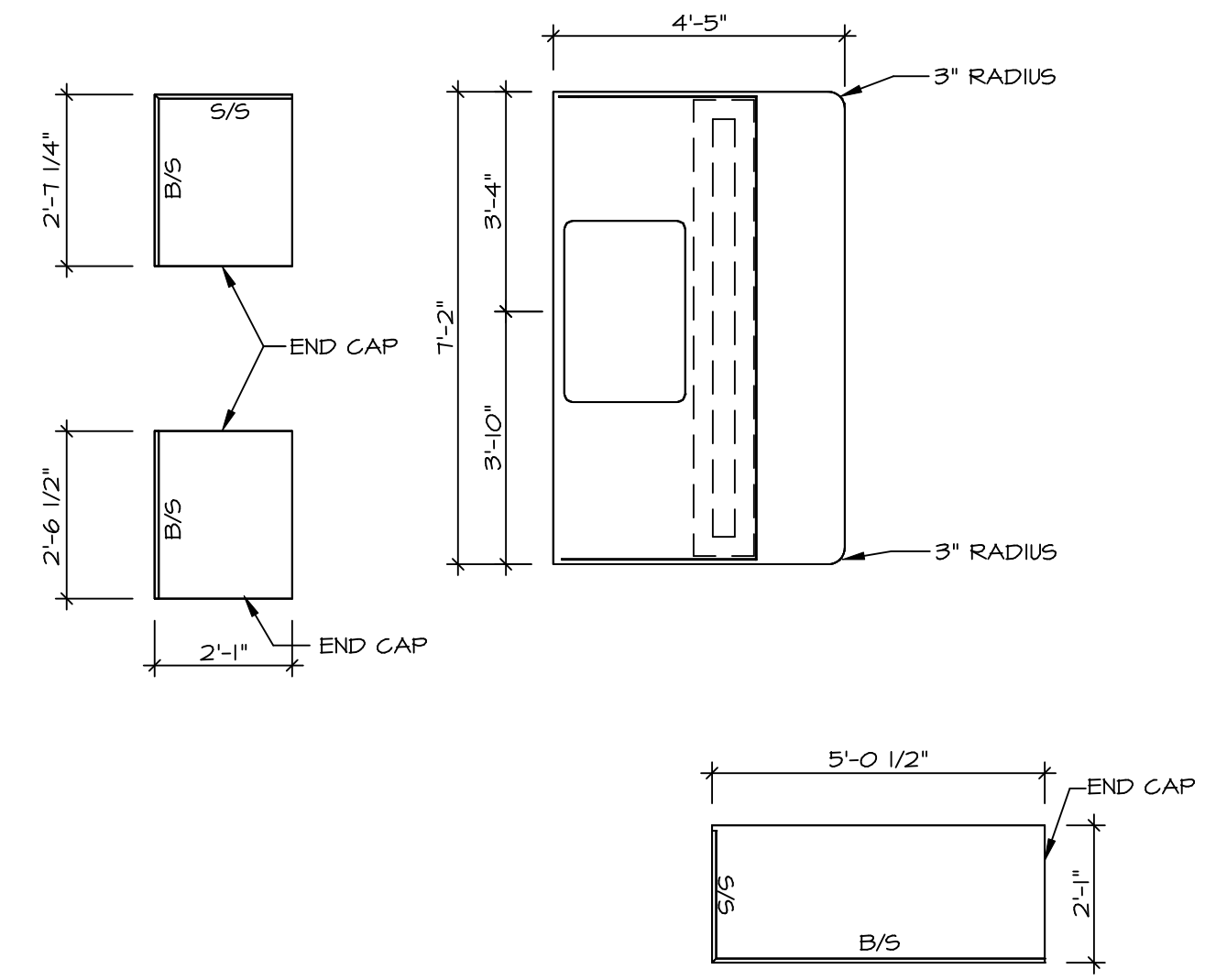
NVR
 NVR, Inc.
 Architectural Services
 Architects
 5285 Westpark Drive
 Frederick, MD 21703

NVR, Inc., owner, expressly reserves its copyright in these plans. These plans are not to be reproduced, changed, copied in any way, or otherwise used, without the prior written consent of NVR, Inc.

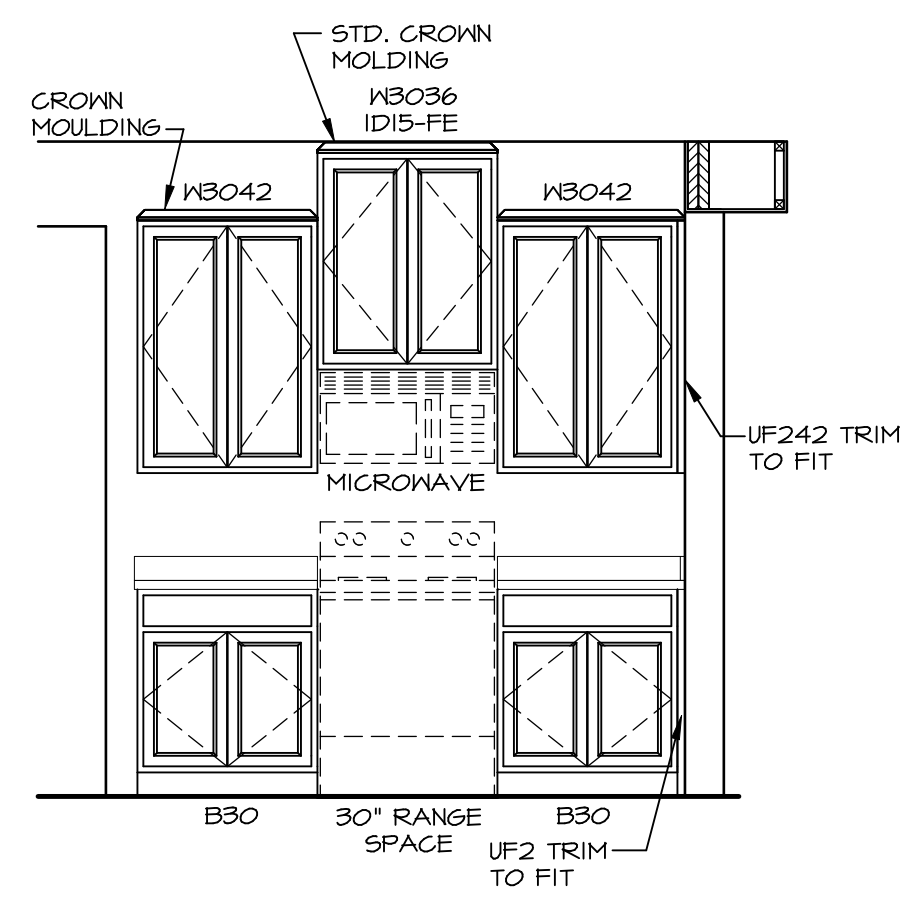
| REV. NO. | DATE | DESCRIPTION |
|----------|----------|-----------------------------|
| 1 | 08/25/16 | N.L. - DRAWING ALIGNMENT |
| 2 | 1/24/17 | TRV. - STANDARD DETAILS 5.0 |



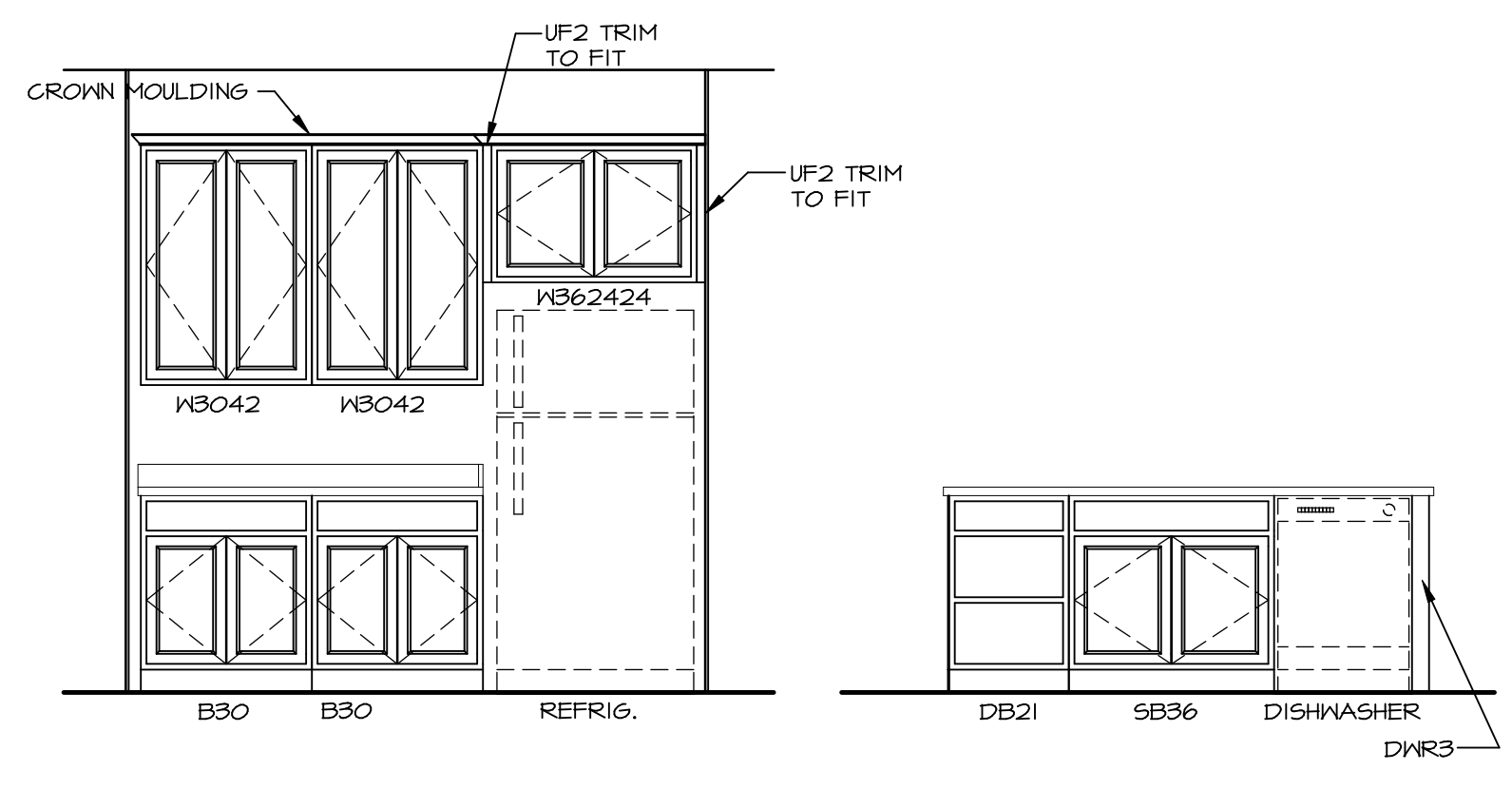
KITCHEN CABINET PLAN - KC 3277
 SCALE: 3/8" = 1'-0"



KITCHEN COUNTERTOP PLAN - KT 3277
 SCALE: 3/8" = 1'-0"

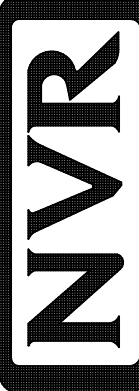


ELEVATION "A"
 SCALE: 3/8" = 1'-0"



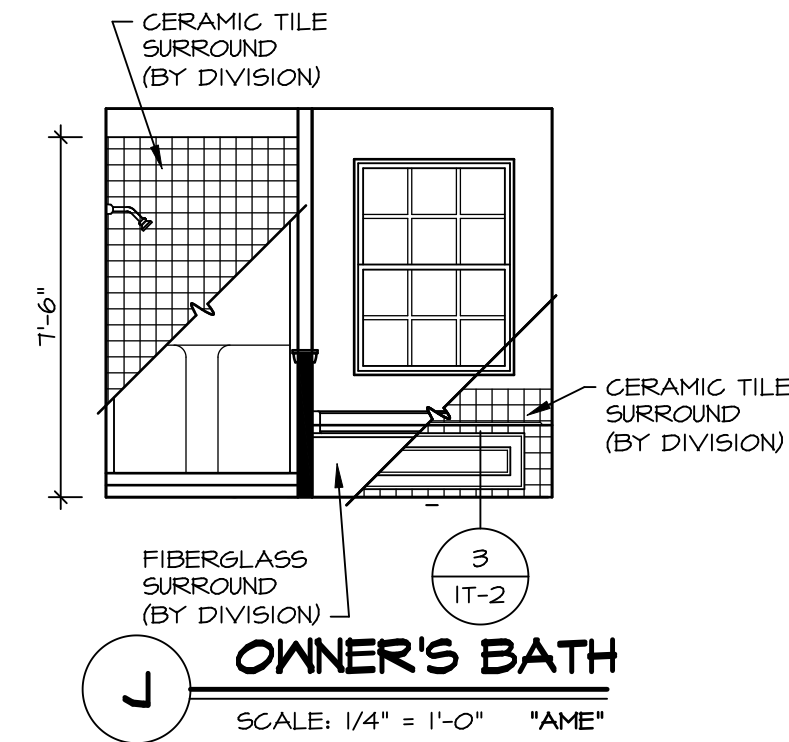
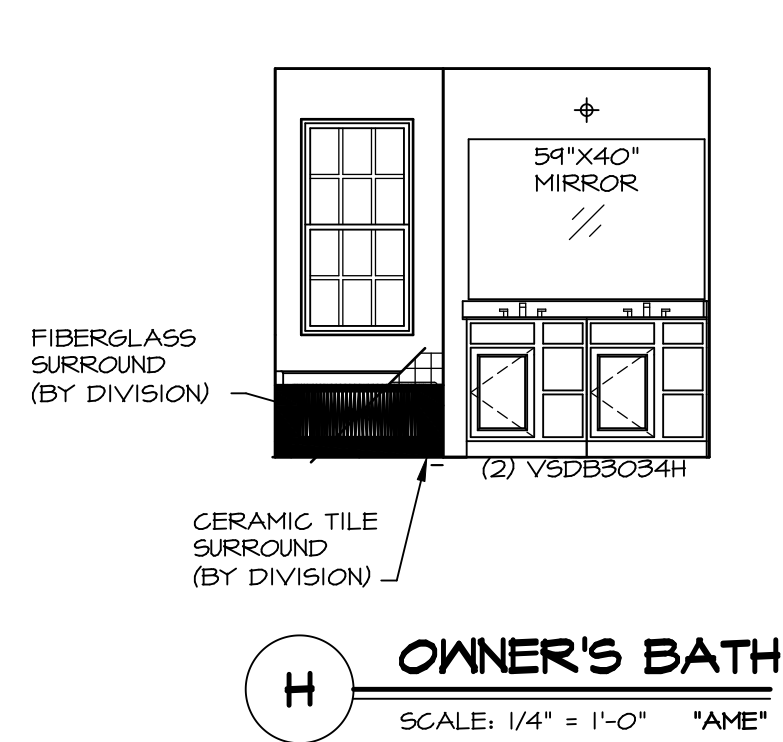
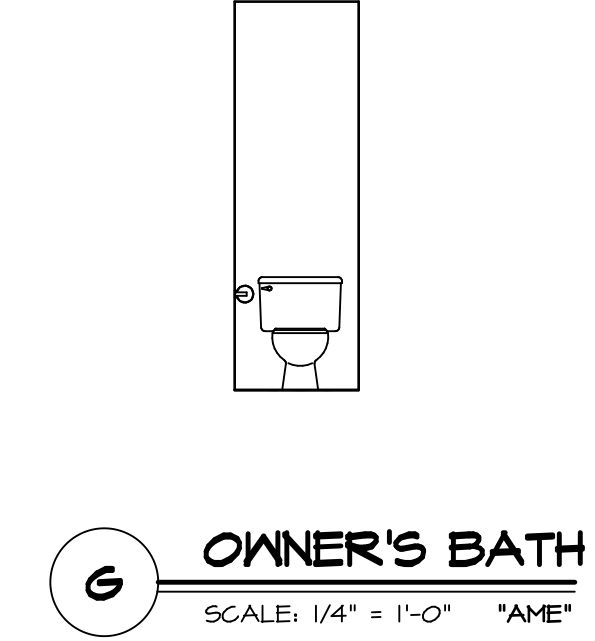
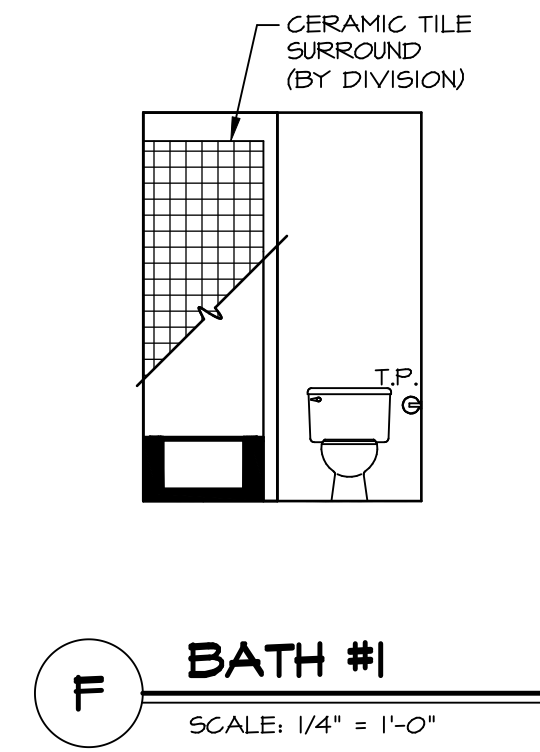
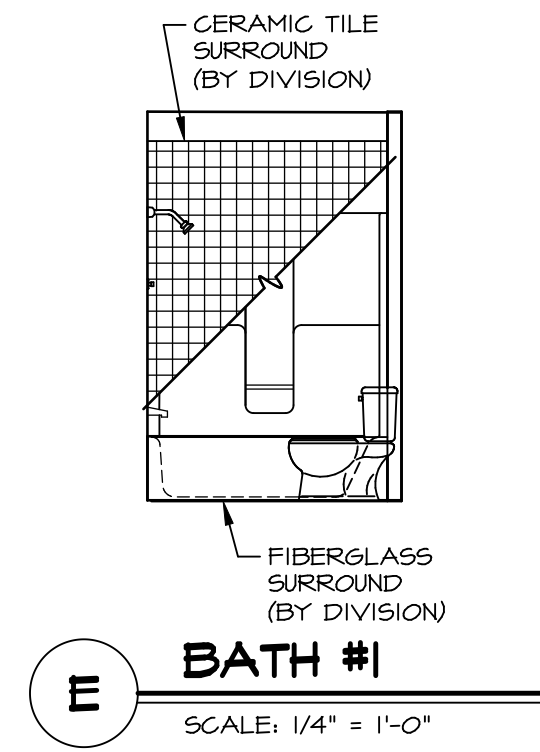
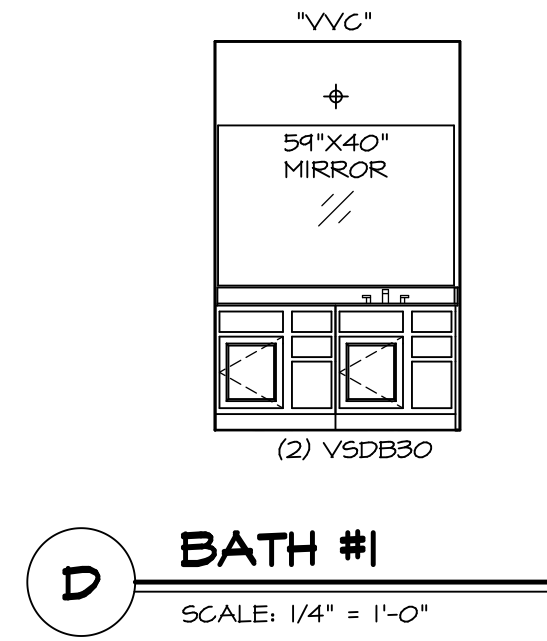
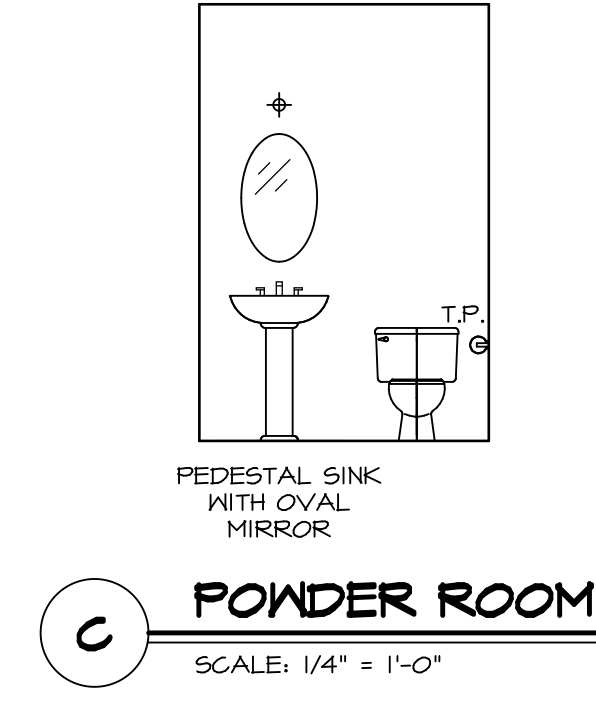
ELEVATION "B"
 SCALE: 3/8" = 1'-0"

ELEVATION "C"
 SCALE: 3/8" = 1'-0"

| | | | | | | |
|--------------------------|--------------------------------|--|---|-------------------|----------------------|----------------------|
| SHEET NO. A-12 | MODEL VICTORIA FALLS | DRAWING TITLE KITCHEN LAYOUT | SET NO. VCFOO | REV. NO. 1 | DATE 01/25/17 | REMARKS |
| | | | VERSION 02 | DATE | OPTION | STANDARD DETAILS 3.0 |
| OPTION DESCRIPTION | | | NVR, Inc., owner, expressly reserves its copyright in these plans. These plans are not to be reproduced, changed, copied, or used in any way without the written consent of NVR, Inc. | | | |
| 79 | | |  NVR, Inc. Architectural Services 5285 Westover Hills, Suite 100 Frederick, MD 21703 | | | |

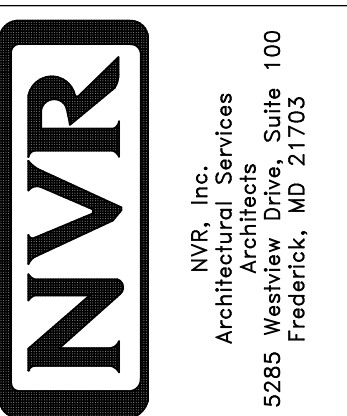
NOTES:

1. TEMPERED GLASS SHOWER ENCLOSURE WITH SLIDING DOOR OR OPTIONAL SLIDING DOOR BY DIVISION
2. TUB ACCESS PANELS PROVIDED AS NEEDED, ALL MATERIALS BY DIVISION
3. REFER TO SHEET IT-02 FOR TUB AND SHOWER DETAILS.
4. ALL V5DB24-42 DRAWERS TO BE SET ON RIGHT HAND.
5. BATH ELEVATIONS ARE SHOWN PER PLAN.



| REV. NO. | DATE | REMARKS |
|----------|----------|---------------------------|
| 1 | 08/25/16 | N.L. - DRAWING ALIGNMENT |
| 2 | 01/23/17 | TM - STANDARD DETAILS 3.0 |

NVR, Inc., owner, expressly reserves its copyright in these plans. These plans are not to be reproduced, changed, copied, or otherwise used in any way without the prior written consent of NVR, Inc.



| | | | | | | |
|-----------|--------------------------------|---------|---------|----------|-------|--------|
| SHEET NO. | MODEL | SET NO. | VERSION | DRAWN BY | DATE: | OPTION |
| A-13 | VICTORIA FALLS BATH ELEVATIONS | VCFOO | 02 | | | |
| 83 | | | | | | |