

FIRST FLOOR JACK SCHEDULE					
IDENTIFIER	DESCRIPTION	OPTIONS	ENG. NUM.	REMARKS	
J01	JACK - (2) 2X4 SPF STUD GRADE		1051 / 1050		
J02	JACK - (2) 2X4 SPF STUD GRADE		1051 / 1050		
J03	JACK - (5) 2X4 SP#1	SXC	1051	STEEL PLATE	
J04	JACK - (5) 2X4 SP#1	SXC	1051	STEEL PLATE	
J05	JACK - (2) 2X4 SPF STUD GRADE	ZCC / SXC	1062		
J06	JACK - (2) 2X4 SPF STUD GRADE	ZCC / SXC	1062		
J46	JACK - (5) 2X4 SP#1	EDI / SXC	1051	STEEL PLATE	
J47	JACK - (5) 2X4 SP#1	EDI / SXC	1051	STEEL PLATE	
J50	JACK - (5) 2X4 SP#1	MAR / SXC	1051	STEEL PLATE	
J54	JACK - (5) 2X4 SP#1	MAR / SXC	1051	STEEL PLATE	
J67	JACK - (3) 2X4 SPF STUD GRADE	GCB / ZCC	1006		
J68	JACK - (3) 2X4 SPF STUD GRADE	GCB / ZCC	1006		

LEGEND	
	BEARING WALL
	NON BEARING WALL
	INDICATES BEARING FROM POINT-LOAD ABOVE
	JACKS
	BEAM/HEADER
	PAD FOOTING
	STEEL COLUMN
	PORTAL FRAME
	JOIST/TRUSS
	LVL
	ENGINEERING PAGE NUMBER

SEE FC DETAILS FOR FRAMING CONNECTORS

LVL PLY TO PLY FASTENING SCHEDULE:	
1.A - (2) FLY UP TO AND INCLUDING 11 7/8" TALL; FASTEN PLYS W/ (2) ROWS 16D NAILS AT 12" O.C.	
2.A - (2) FLY 14" TO AND 18" TALL (INCLUSIVE); FASTEN PLYS W/ (3) ROWS 16D NAILS AT 12" O.C.	
3.A - (2) FLY 20" TALL AND OVER; FASTEN PLYS W/ (4) ROWS 16D NAILS AT 12" O.C.	
4.A - (3) FLY UP TO AND INCLUDING 11 7/8" TALL; FASTEN PLYS W/ (2) ROWS 16D NAILS AT 12" O.C. FROM EACH SIDE	
5.A - (3) FLY 14" TO AND 18" TALL (INCLUSIVE); FASTEN PLYS W/ (3) ROWS 16D NAILS AT 12" O.C. FROM EACH SIDE	
6.A - (3) FLY 20" TALL AND OVER; FASTEN PLYS W/ (4) ROWS 16D NAILS AT 12" O.C. FROM EACH SIDE	

FIELD INSTALLED FIRST FLOOR BEAM/HEADER SCHEDULE					
IDENTIFIER	DESCRIPTION	LENGTH	OPTIONS	ENG. NUM.	REMARKS
PFOI-2	LVL - I4	14'-4"	GCB / ZCC	1006	2 PLY, 2A

FLOOR PLAN NOTES

- ALL HEADERS ARE (2) 2x6 w/ 2x4 WALLS OR (3) 2x6 w/ 2x6 WALLS, UNLESS OTHERWISE NOTED.
- ALL HEADERS TO HAVE (1) 2x4 OR 2x6 JACK EACH END, UNLESS OTHERWISE NOTED.
- ALL EXTERIOR WALLS TO BE 4" AND ALL INTERIOR WALLS TO BE 3 1/2", UNLESS OTHERWISE NOTED.
- HATCHED AREAS INDICATE DROPPED CEILINGS. ALL DROPPED CEILINGS ARE 12" UNLESS OTHERWISE NOTED.
- SEE "BRACED WALL PANEL DETAIL SHEET" FOR SPECIAL WALL FRAMING LOCATIONS AND HEADER SIZES, IF APPLICABLE.
- SEE STANDARD DETAIL CATEGORY "IT" SHEET(S) FOR INTERIOR TRIM DETAILS.
- SEE ARCHITECTURAL DETAIL SHEET "AD" FOR HOUSE SPECIFIC INTERIOR TRIM OPTION TABLE.
- ALL WINDOWS HAVE T-0 1/2" HEADER HEIGHT UNLESS OTHERWISE NOTED.

GYPSUM NOTES

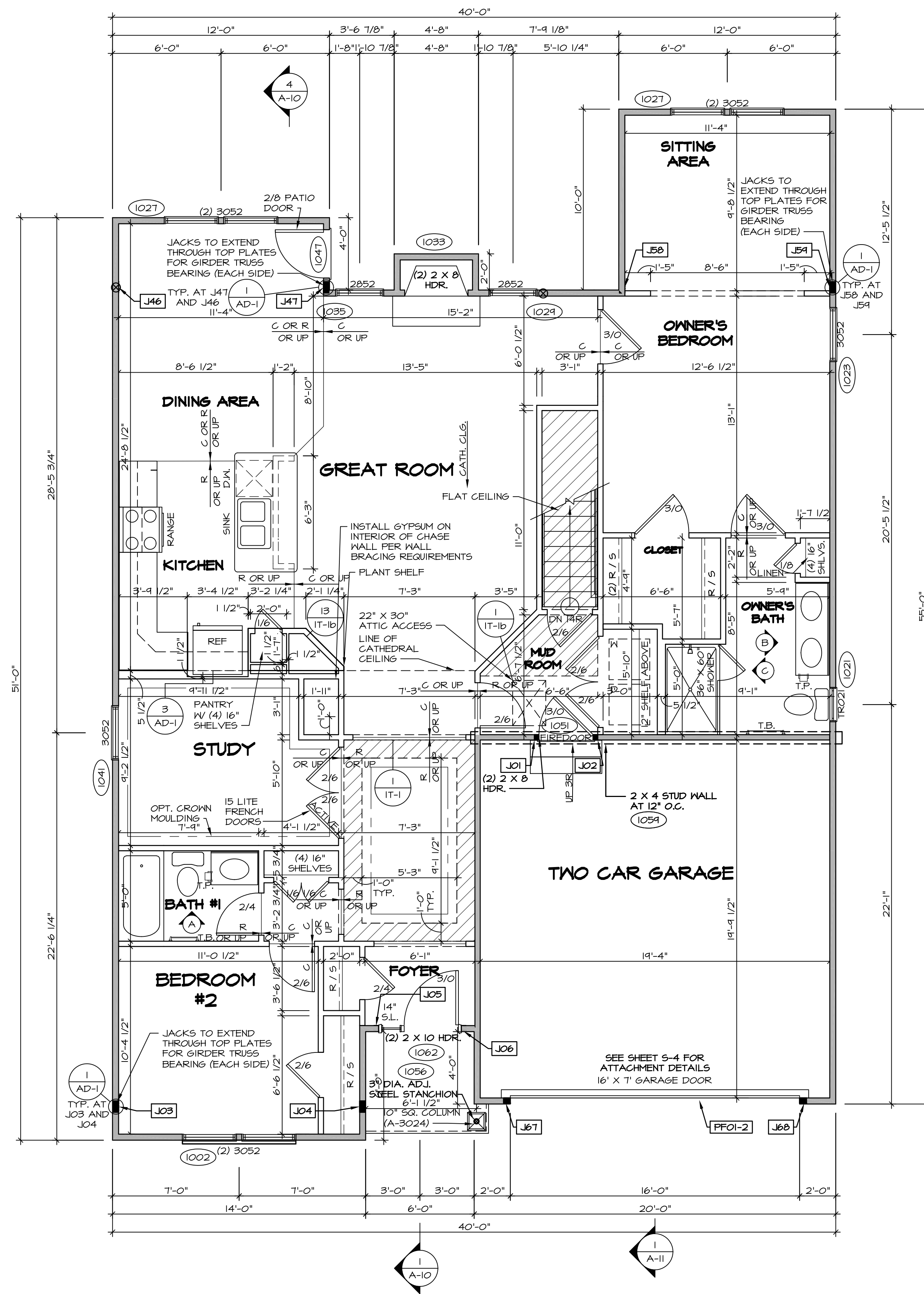
AT GARAGE:
GYPSUM BOARD AT COMMON WALLS, CEILING, BEAM WRAPS AND SUPPORTS PER STANDARD DETAIL FA-10(b) FIRE ASSEMBLIES OR AS REQUIRED BY LOCAL CODE.

AT STAIRS:
1/2" GYPSUM BOARD AT UNDERSIDE OF STAIRS AND WALLS IN CLOSET

BASEMENT WITH I-JOIST FLOOR SYSTEM ABOVE:
WITH OPTION "SG1" - DRYWALL UNFINISHED BASEMENT CEILING AREA

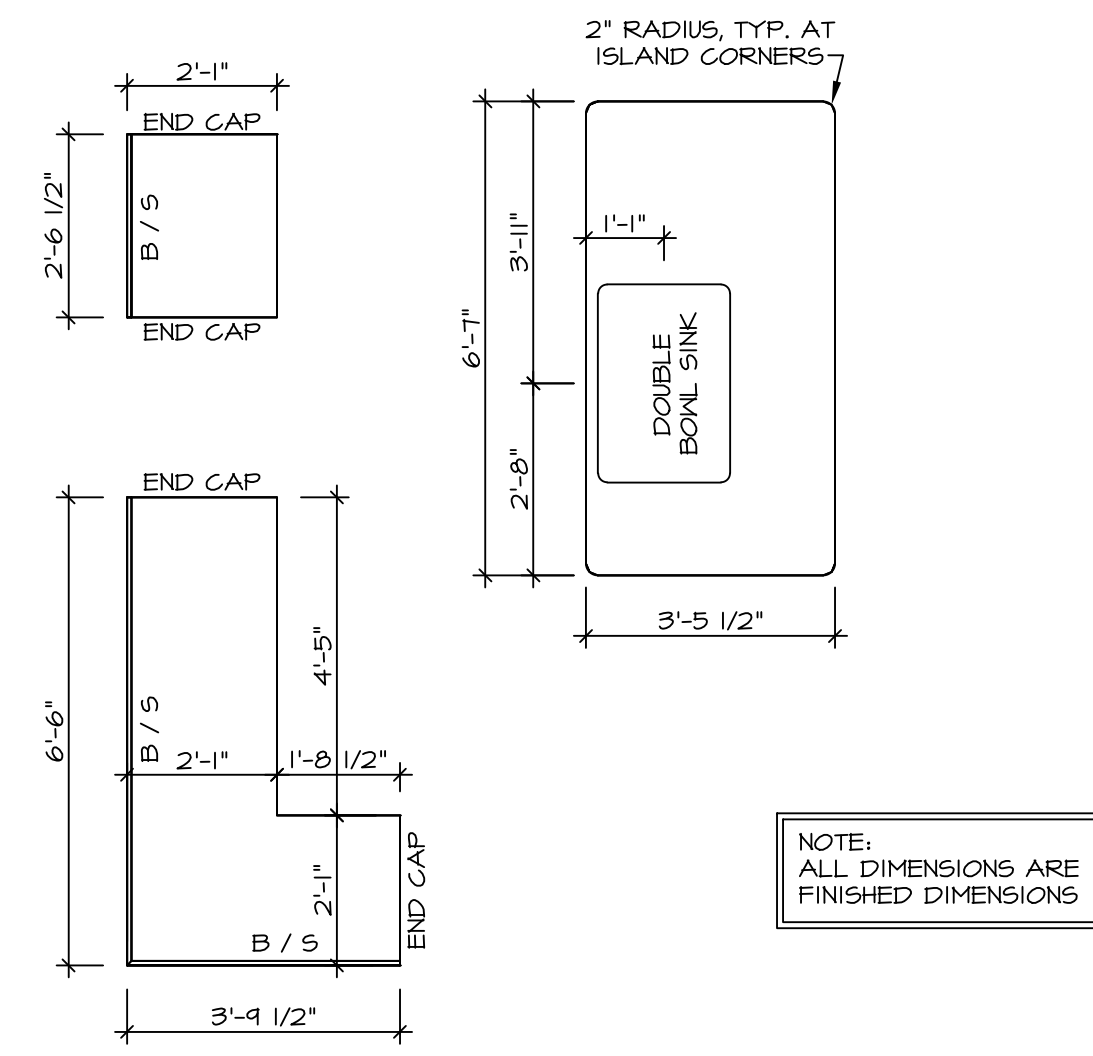
NOTES:

- 1/2" GYPSUM WALL BOARD REQUIRED ON CEILING IN UNFINISHED AREAS WHEN NO SPRINKLER SYSTEM IS INSTALLED
- A MAXIMUM AREA OF 80 SQ FT MAY BE OMITTED AS NEEDED FOR INSTALLATION OF PLUMBING, ELECTRICAL, AND/OR HVAC (TYPICALLY AN 8'-0"x8'-0" CEILING SPACE ABOVE MECHANICAL AREA).
- PROVIDE FIRE BLOCKING AS REQUIRED AT PERIMETER OF ANY AREAS WHERE DRYWALL HAS BEEN OMITTED.



FIRST FLOOR PLAN
SCALE: 1/4" = 1'-0"

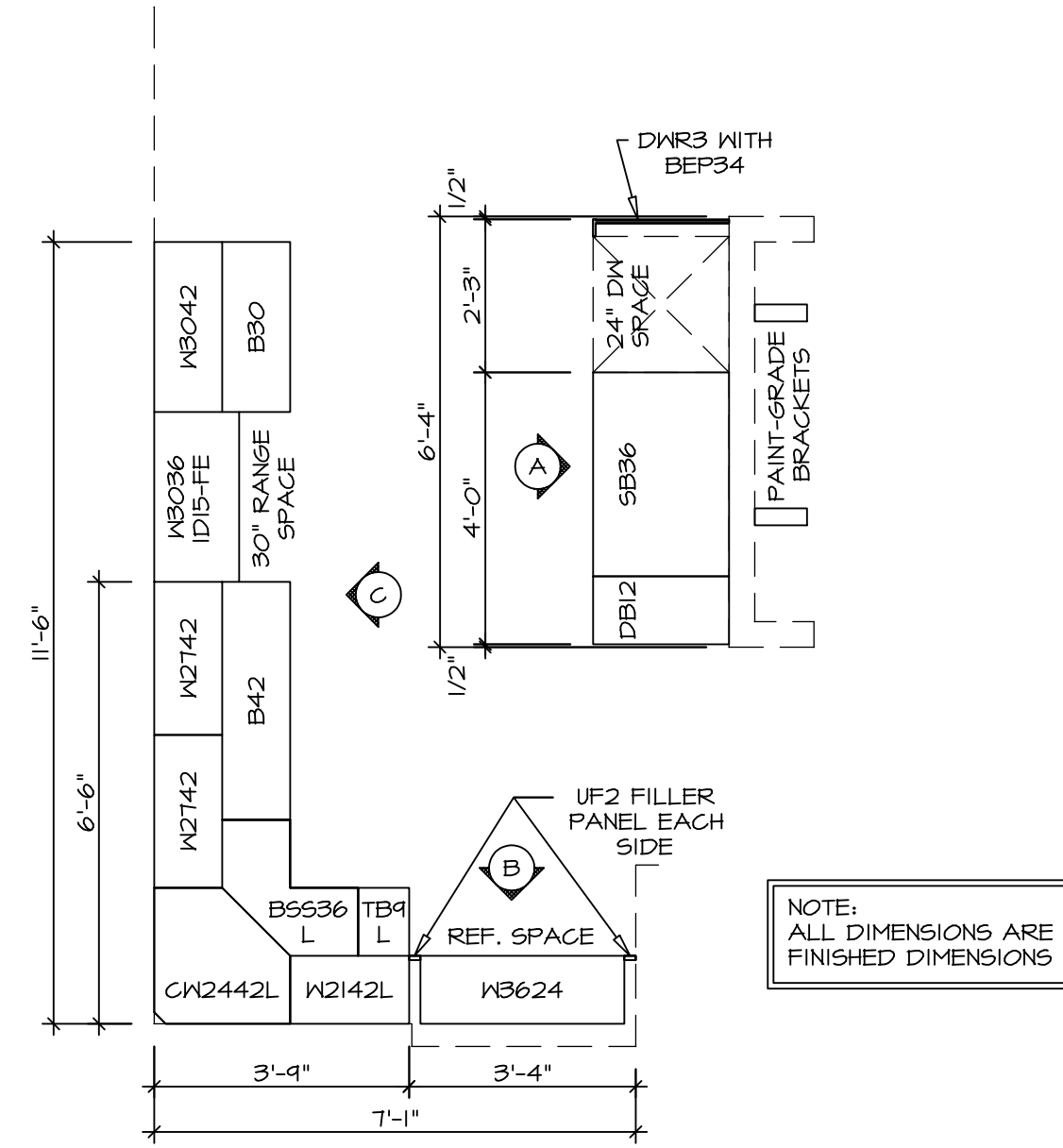
SHEET NO. A-7	MODEL PISA TORRE	DRAWING TITLE FIRST FLOOR PLAN	OPTION DESCRIPTION CORNERSTONE SPECIFICATIONS	SET NO. P5TCO	VERSION 02	DATE:	OPTION
				DRAWN BY			
				NVR, Inc. Architectural Services Architects 21 Park Plaza, Suite A Frederick, MD 21702			
PISA TORRE - PS100_02_V01-CH-S121-590587-Sheets\01_Specifications A-7 PLAN_SXC_LS.dwg 11/16/17 - 3:55 PM				NVR, Inc., owner, expressly reserves its copyright in the drawings and plans. These plans are not to be reproduced, changed, or altered in any way without the written consent of NVR, Inc.			
REV. NO. DATE 1 08/01/16 TH - DRAWING ALIGNMENT				REMARKS			



NOTE: ALL DIMENSIONS ARE FINISHED DIMENSIONS

(KT-3209)
COUNTERTOP LAYOUT

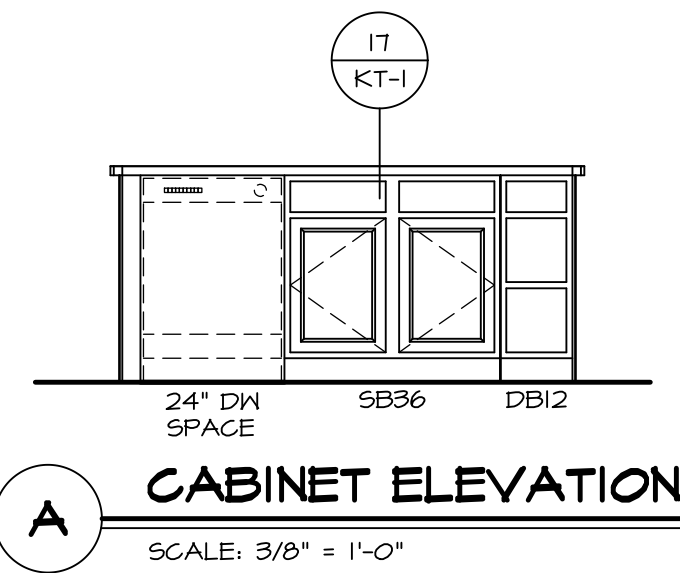
2
A-B SCALE: 3/8" = 1'-0"



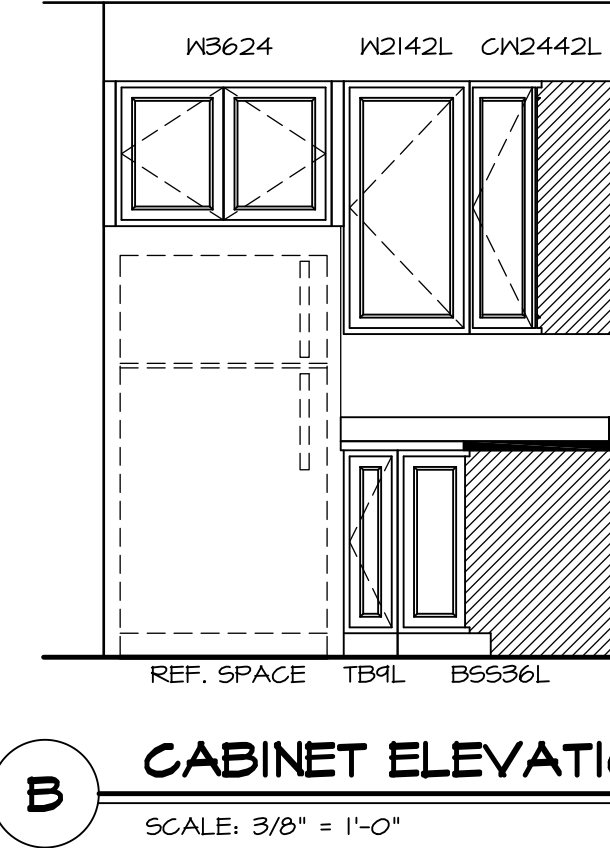
NOTE: ALL DIMENSIONS ARE FINISHED DIMENSIONS

(KC-3209)
CABINET LAYOUT

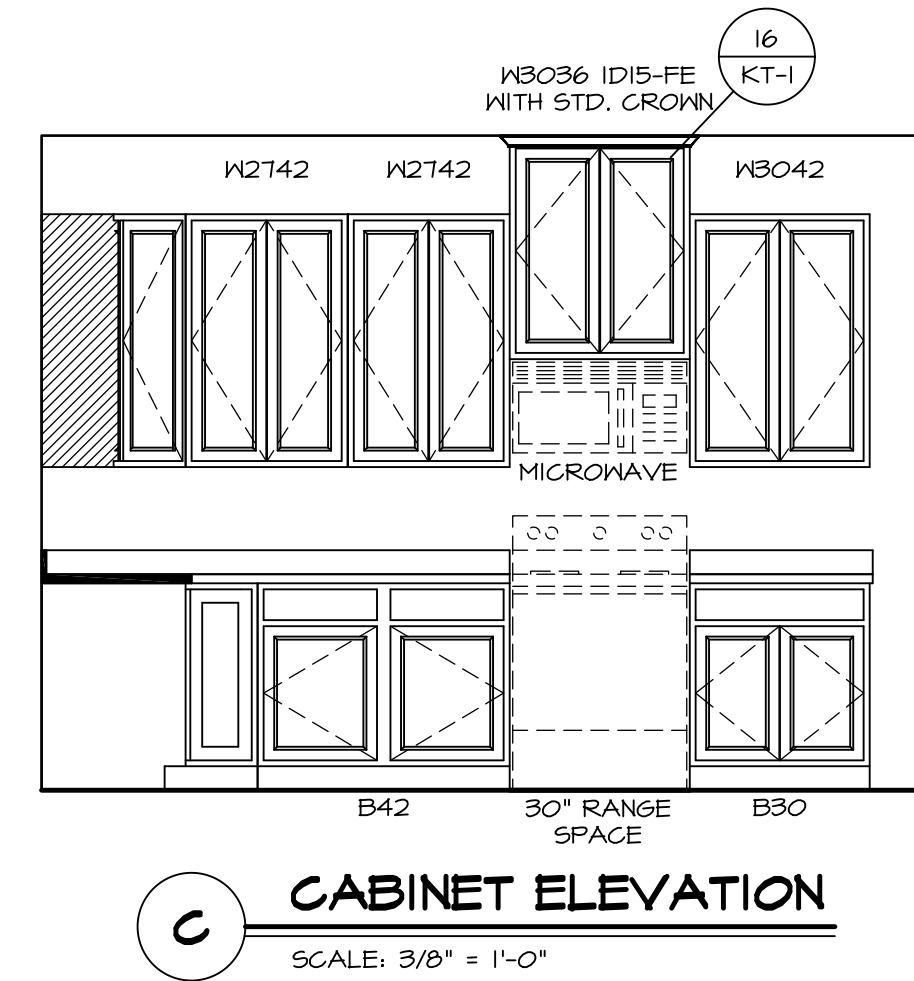
1
A-B SCALE: 3/8" = 1'-0"



A CABINET ELEVATION
SCALE: 3/8" = 1'-0"

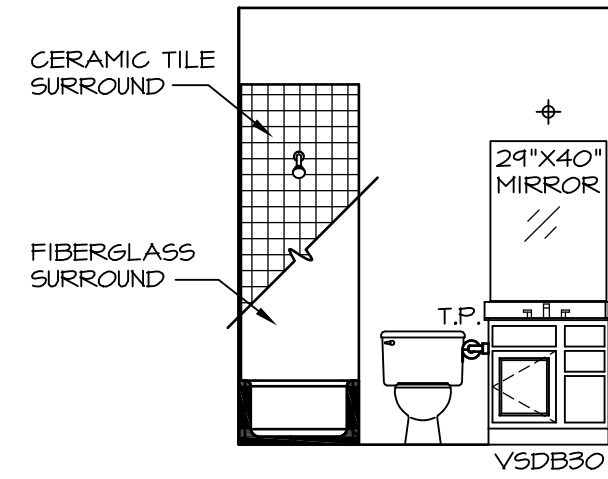


B CABINET ELEVATION
SCALE: 3/8" = 1'-0"

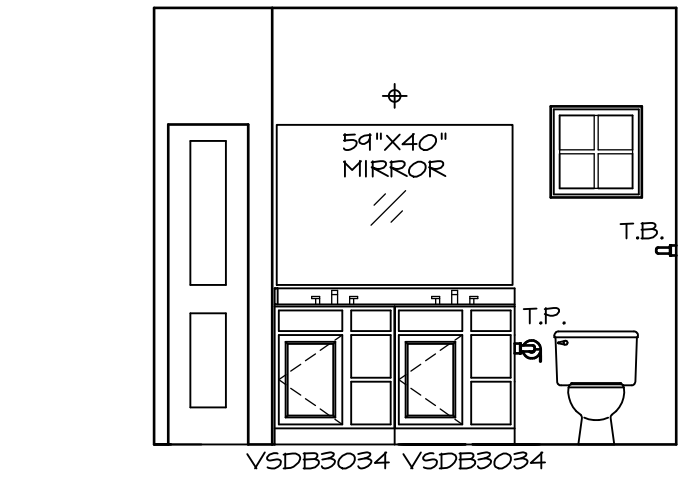


C CABINET ELEVATION
SCALE: 3/8" = 1'-0"

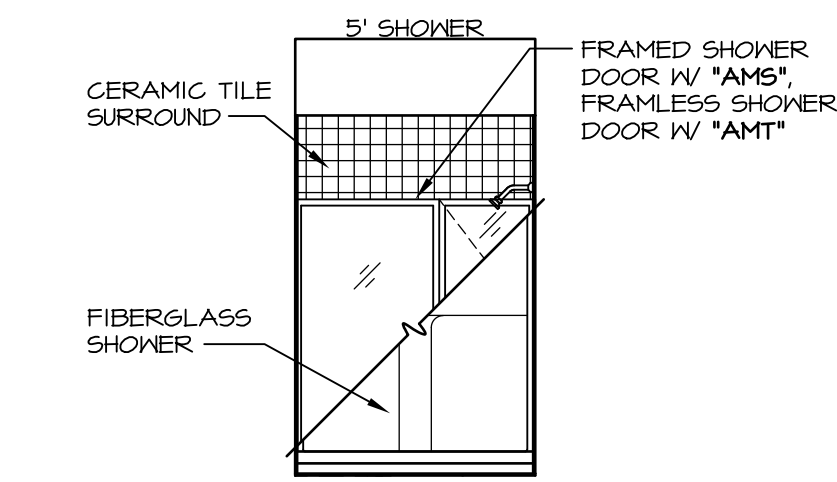
SHEET NO. A-13	MODEL PISA TORRE	SET NO. PSTCO	REVISIONS	REMARKS
	DRAWING TITLE KITCHENS	VERSION 02	DATE 3/24/15	
48	OPTION DESCRIPTION	OPTION		
	<p>NVR, Inc., owner, expressly reserves its copyright in these plans. These plans are not to be reproduced, changed, copied in any way, or used for any other purpose without the written consent of NVR, Inc.</p> <p>NVR, Inc. Architectural Services Architects 21 Bay Plaza, Suite A Frederick, MD 21702</p>			



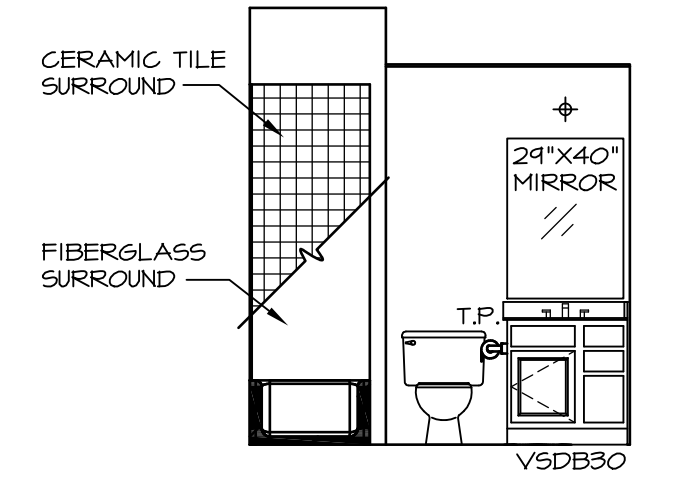
A BATH #1
SCALE: 1/4" = 1'-0"



B OWNER'S BATH
SCALE: 1/4" = 1'-0"



C OWNER'S BATH
SCALE: 1/4" = 1'-0"



P BASEMENT BATH
SCALE: 1/4" = 1'-0"

NOTES:

1. TEMPERED GLASS SHOWER ENCLOSURE WITH SWING DOOR OR OPTIONAL SLIDING DOOR BY DIVISION
2. TUB ACCESS PANELS PROVIDED AS NEEDED, ALL MATERIALS BY DIVISION
3. REFER TO SHEET IT-2 FOR TUB AND SHOWER DETAILS.
4. ALL V5DB24-42 DRAWERS TO BE SET ON RIGHT HAND.
5. BATH ELEVATIONS ARE SHOWN PER PLAN.

NOTES
• WINDOWS VARY PER OPTION.

SHEET NO.	A-14	MODEL	PISA TORRE	SET NO.	P5TC0
DRAWING TITLE	BATH ELEVATIONS	VERSION	02	DRAWN BY	
OPTION DESCRIPTION		DATE:		OPTION	

NVR
NVR, Inc.
Architectural Services
Architects
21 Bay Street, Suite A
Frederick, MD 21702

NVR, Inc., owner, expressly reserves its copyright in these architectural plans. These plans are not to be reproduced, changed, copied in any way, or otherwise used, without the prior written consent of NVR, Inc.

REV. NO.	DATE	DESCRIPTION	REMARKS
1	08/07/16	TM - DRAINING ALIGNMENT	