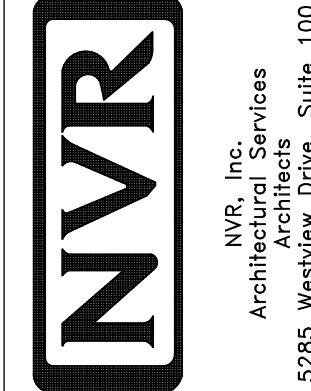


PLUMBING PLAN
SCALE: 1/4" = 1'-0"

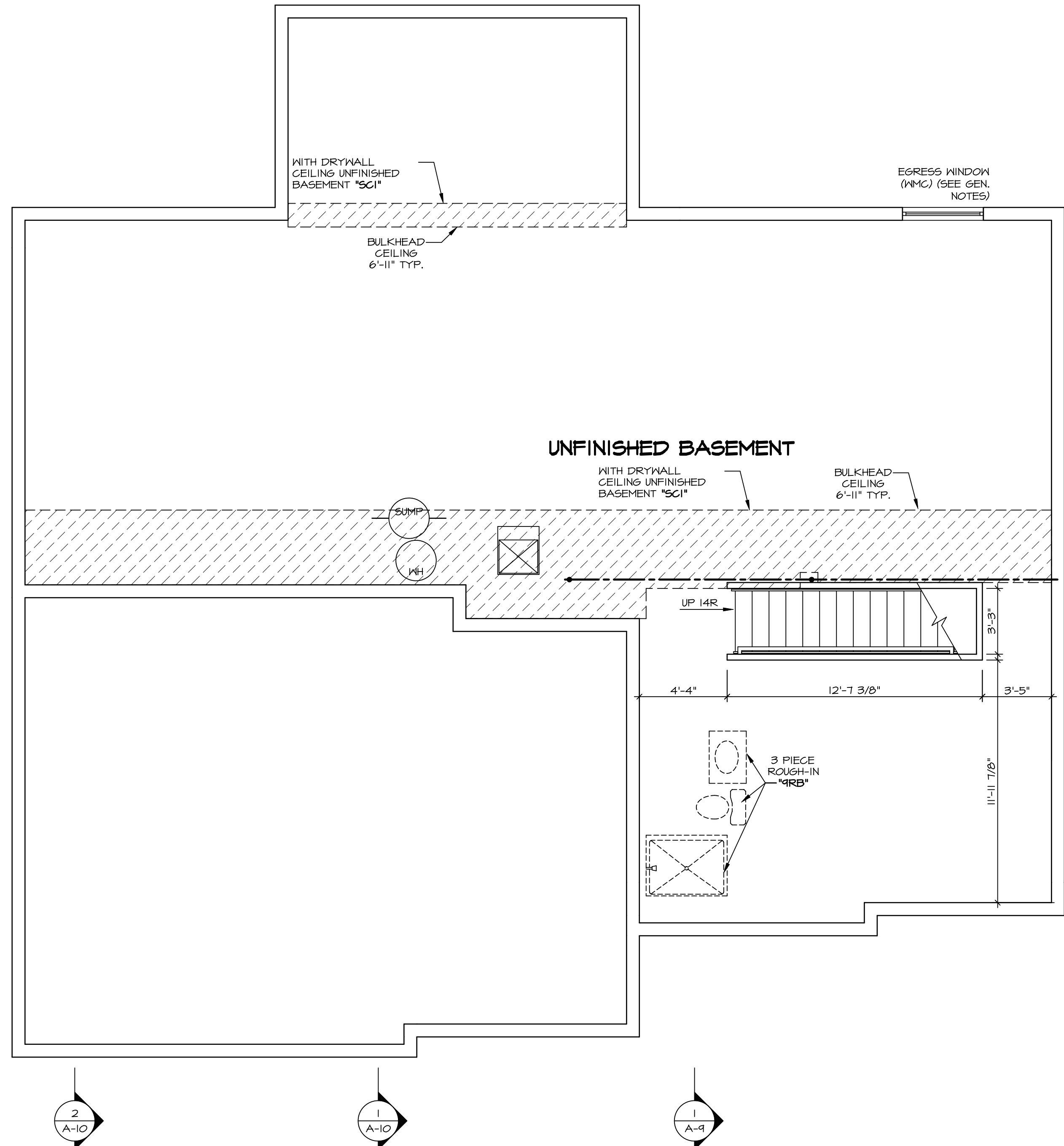
1
A-5

SHEET NO. A-5	MODEL LONDON	SET NO. LDN00
OPTION DESCRIPTION 33	DRAWING TITLE PLUMBING PLAN	VERSION 02
	DATE: 8/13/15	DRAWN BY: PTH



NVR, Inc., owner, expressly warrants that the information contained herein is true and correct to the best of its knowledge and belief. NVR, Inc. does not assume any liability for errors or omissions in this drawing. All dimensions are in feet and inches. All work shall conform to applicable codes and specifications. No part of this drawing shall be reproduced, stored in a retrieval system, or transmitted, in any form or by any means, electronic, mechanical, photocopying, recording, or by any information storage and retrieval system, without the prior written consent of NVR, Inc.

REV. NO.	DATE	REMARKS



LEGEND

	BEARING WALL
	NON BEARING WALL
	INDICATES BEARING FROM POINT-LOAD ABOVE
	JACKS
	BEAM/HEADER
	PAD FOOTING
	STEEL COLUMN
	PORTAL FRAME
	JOIST/TRUSS
	LVL
	ENGINEERING PAGE NUMBER

SEE FC DETAILS FOR FRAMING CONNECTORS

- FLOOR PLAN NOTES**
- ALL HEADERS ARE (2) 2x6 w/ 2x4 WALLS OR (3) 2x6 w/ 2x6 WALLS, UNLESS OTHERWISE NOTED.
 - ALL HEADERS TO HAVE (1) 2x4 OR 2x6 JACK EACH END, UNLESS OTHERWISE NOTED.
 - ALL EXTERIOR WALLS TO BE 4" AND ALL INTERIOR WALLS TO BE 3 1/2", UNLESS OTHERWISE NOTED.
 - HATCHED AREAS INDICATE DROPPED CEILINGS. ALL DROPPED CEILINGS ARE 12" UNLESS OTHERWISE NOTED.
 - SEE "BRACED WALL PANEL DETAIL SHEET" FOR SPECIAL WALL FRAMING LOCATIONS AND HEADER SIZES, IF APPLICABLE.
 - SEE STANDARD DETAIL CATEGORY "IT" SHEET(S) FOR INTERIOR TRIM DETAILS.
 - SEE ARCHITECTURAL DETAIL SHEET "AD" FOR HOUSE SPECIFIC INTERIOR TRIM OPTION TABLE.
 - ALL WINDOWS HAVE "1'-0 1/2" HEADER HEIGHT UNLESS OTHERWISE NOTED.

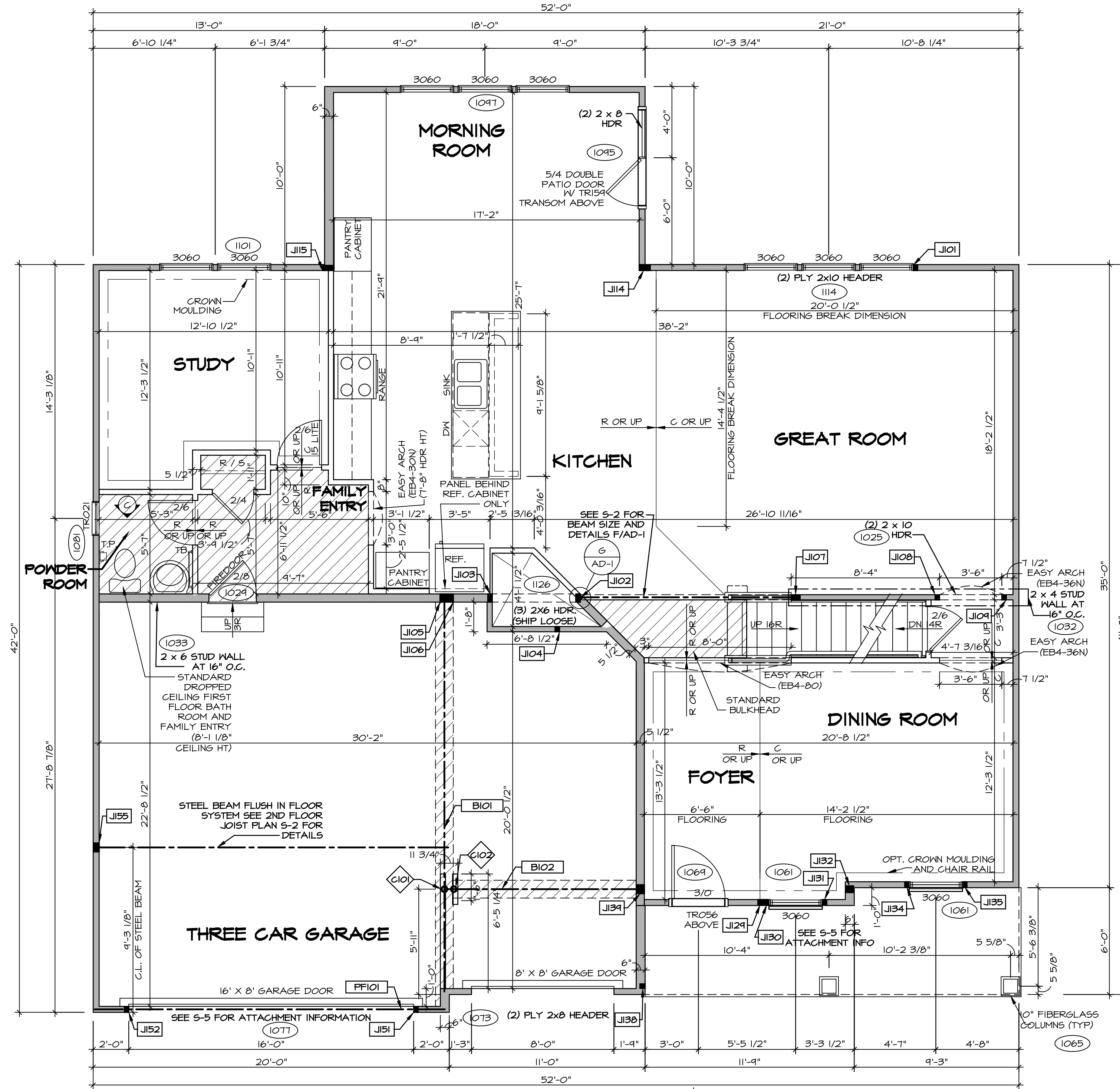
- GYPSUM NOTES**
- AT GARAGE:
GYPSUM BOARD AT COMMON WALLS, CEILINGS, BEAM WRAPS AND SUPPORTS PER STANDARD DETAIL FA-1(b) FIRE ASSEMBLIES OR AS REQUIRED BY LOCAL CODE.
- AT STAIRS:
1/2" GYPSUM BOARD AT UNDERSIDE OF STAIRS AND WALLS IN CLOSET
- BASEMENT WITH I-JOIST FLOOR SYSTEM ABOVE:
WITH OPTION "SGI" - DRYWALL UNFINISHED BASEMENT CEILING AREA
- NOTES:**
- 1/2" GYPSUM WALL BOARD REQUIRED ON CEILING IN UNFINISHED AREAS WHEN NO SPRINKLER SYSTEM IS INSTALLED.
 - A MAXIMUM AREA OF 80 SQ FT MAY BE OMITTED AS NEEDED FOR INSTALLATION OF PLUMBING, ELECTRICAL, AND/OR HVAC (TYPICALLY AN 8'-0"x8'-0" CEILING SPACE ABOVE MECHANICAL AREA).
 - PROVIDE FIRE BLOCKING AS REQUIRED AT PERIMETER OF ANY AREAS WHERE DRYWALL HAS BEEN OMITTED.

BASEMENT FLOOR PLAN
SCALE: 1/4" = 1'-0"

SHEET NO. A-6	MODEL LONDON	SET NO. LDN00	REVISIONS
	DRAWING TITLE BASEMENT FLOOR PLAN	VERSION 02	DATE
OPTION DESCRIPTION 37	DRAWN BY HD	DATE: 8/13/15	REV. NO. DATE
OPTION		REMARKS	

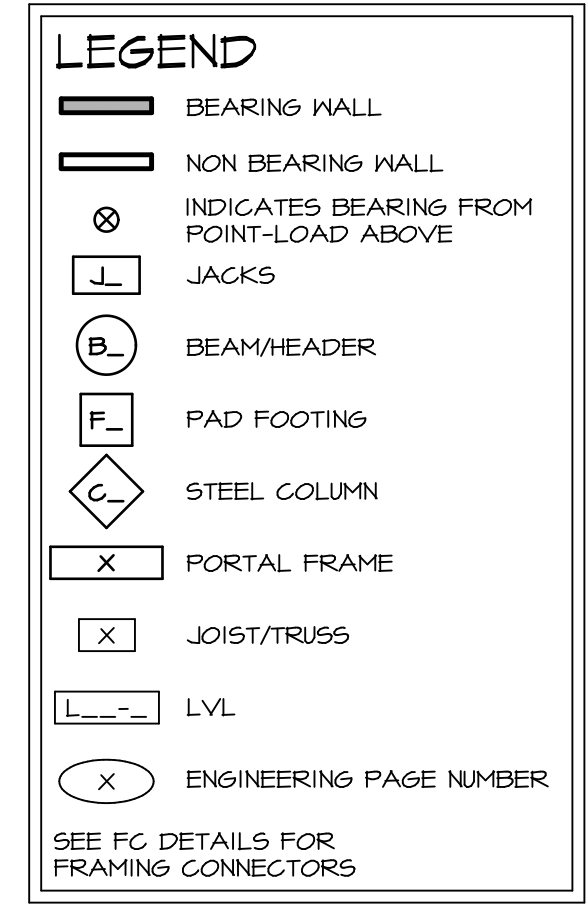
NVR
NVR, Inc.
Architectural Services
Architects
5285 West... Suite 100
Frederick, MD 21703

C:\NVR\Solves\LONDON_LDNO0_02\DCI-CH-5317\040510\Sheets\01_Spec\01_A-6_BSM1_LS.dwg 12/04/18 - 3:18 am



- FLOOR PLAN NOTES**
- ALL HEADERS ARE (2) 2x6 w/ 2x4 WALLS OR (3) 2x6 w/ 2x6 WALLS, UNLESS OTHERWISE NOTED.
 - ALL HEADERS TO HAVE (1) 2x4 OR 2x6 JACK EACH END, UNLESS OTHERWISE NOTED.
 - ALL EXTERIOR WALLS TO BE 4" AND ALL INTERIOR WALLS TO BE 3 1/2", UNLESS OTHERWISE NOTED.
 - HATCHED AREAS INDICATE DROPPED CEILINGS. ALL DROPPED CEILINGS ARE 12" UNLESS OTHERWISE NOTED.
 - SEE "BRACED WALL PANEL DETAIL SHEET" FOR SPECIAL WALL FRAMING LOCATIONS AND HEADER SIZES, IF APPLICABLE.
 - SEE STANDARD DETAIL CATEGORY "IT" SHEET(S) FOR INTERIOR TRIM DETAILS.
 - SEE ARCHITECTURAL DETAIL SHEET "AD" FOR HOUSE SPECIFIC INTERIOR TRIM OPTION TABLE.
 - ALL WINDOWS HAVE 8'-0 1/2" HEADER HEIGHT UNLESS OTHERWISE NOTED.

- GYPSUM NOTES**
- AT GARAGE:
GYPSUM BOARD AT COMMON WALLS, CEILING, BEAM WRAPS AND SUPPORTS PER STANDARD DETAIL FA-1(b) FIRE ASSEMBLIES OR AS REQUIRED BY LOCAL CODE.
- AT STAIRS:
1/2" GYPSUM BOARD AT UNDERSIDE OF STAIRS AND WALLS IN CLOSET



FIRST FLOOR JACK SCHEDULE

IDENTIFIER	DESCRIPTION	OPTIONS	ENG. NUM.	REMARKS
J101	JACK - (2) 2X4 SFF STUD GRADE		1114	
J102	JACK - (2) 2X6 SFF STUD GRADE		1121	
J103	JACK - (2) 2X6 SFF STUD GRADE		1121	
J104	JACK - (2) 2X4 SFF STUD GRADE		1006	
J105	JACK - (4) 2X6 SFF STUD GRADE	MAV	1036	
J106	JACK - (2) 2X6 SFF STUD GRADE		1039, 1041	
J107	JACK - (4) 2X4 SFF STUD GRADE		1027	
J108	JACK - (2) 2X4 SFF STUD GRADE		1025	
J109	JACK - (2) 2X4 SFF STUD GRADE		1025	
J114	JACK - (5) 2X4 SFF	MAA	1018, 1021	
J115	JACK - (5) 2X4 SFF	MAA, MAS	1018	
J124	JACK - (3) 2X4 SFF STUD GRADE	ELC	1010	
J130	JACK - (2) 2X4 SFF STUD GRADE	ELC	1061	
J131	JACK - (2) 2X4 SFF STUD GRADE	ELC	1061	
J132	JACK - (3) 2X6 SFF STUD GRADE	ELC	2000	
J134	JACK - (2) 2X4 SFF STUD GRADE	ELC	1061	
J135	JACK - (2) 2X4 SFF STUD GRADE	ELC	1061	
J138	JACK - (2) 2X4 SFF STUD GRADE	ELC	1065	
J139	JACK - (4) 2X6 SFF STUD GRADE	ELC, ELL	1046	
J151	JACK - (2) 2X4 SFF STUD GRADE		1077	
J152	JACK - (2) 2X4 SFF STUD GRADE		1077	
J155	JACK - (4) 2X4 SFF STUD GRADE	MAV	1122, 1124	

FIELD INSTALLED FIRST FLOOR BEAM/HEADER SCHEDULE

IDENTIFIER	DESCRIPTION	LENGTH	OPTIONS	ENG. NUM.	REMARKS
B101	BEAM STEEL - W8X21	22'-1"	MAV	1046, 1048, 1050	
B102	BEAM STEEL - W8X13	10'-11"	ELC, ELL	1046, 1048, 1050	
PF101	EXT HEADER - 2X12 - 2 PLY	14'-8"		1077	

STEEL COLUMN SCHEDULE

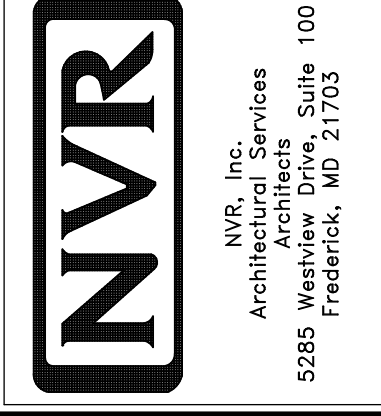
IDENTIFIER	STYLE	HEIGHT	OPTIONS	ENG. NUM.	REMARKS
C101	STANCHION - 4 IN DIA I16A ADJ.	8'-11 5/8"	MAV, FBA	1036	
C102	STANCHION - 4 IN DIA I16A ADJ.	9'-7 1/4"	FBA	1036	

FIRST FLOOR PLAN
SCALE: 1/4" = 1'-0"

REVISIONS

NO.	DATE	DESCRIPTION

NVR, Inc., owner, expressly reserves the copyright in these plans. These plans are not to be reproduced, changed, copied, or otherwise used in any way without the written consent of NVR, Inc.

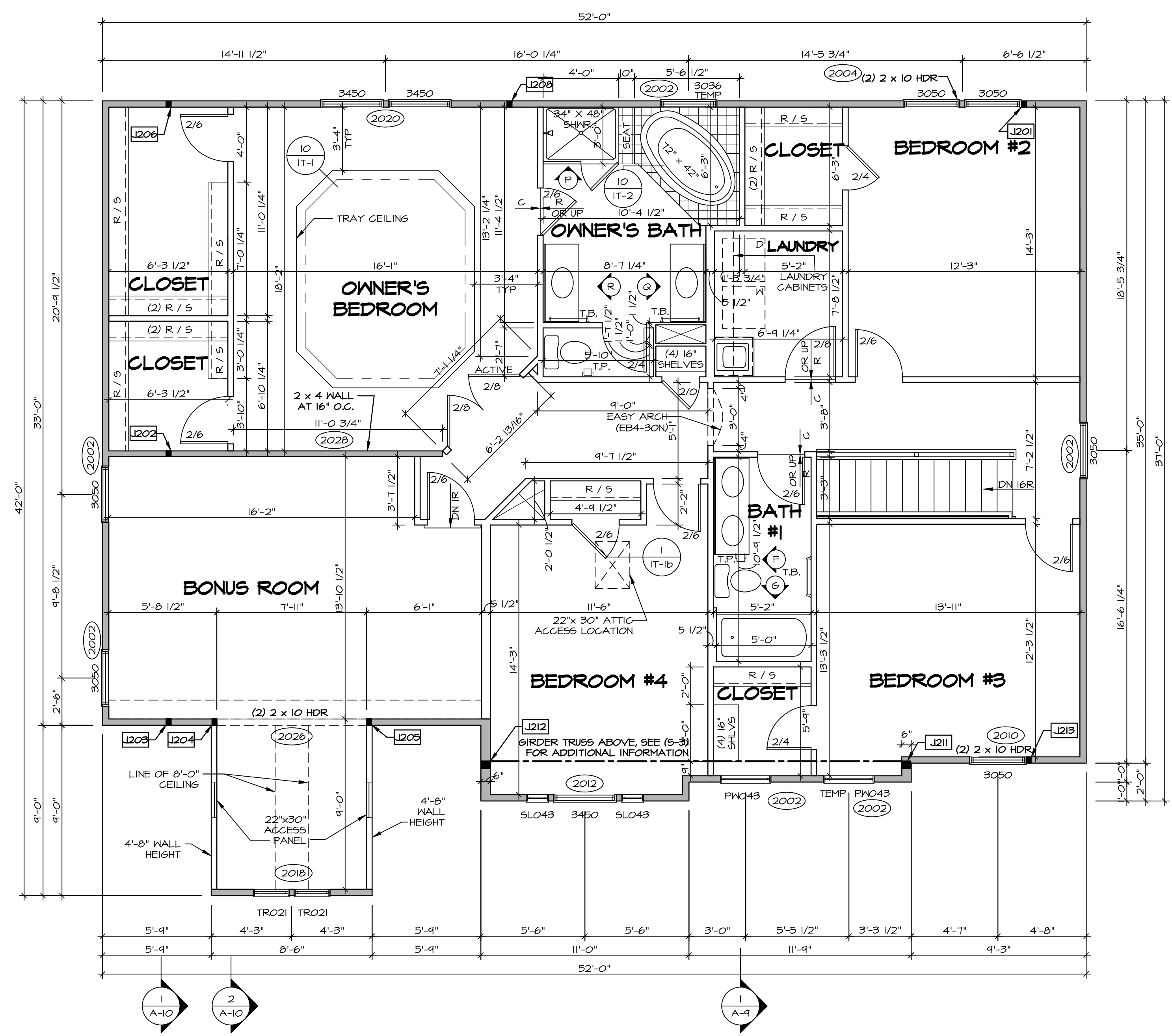


MODEL: LNDNO
DRAWING TITLE: FIRST FLOOR PLAN
OPTION DESCRIPTION: A-7

SET NO.	LDNO	VERSION	BY	DATE	OPTION

SHEET NO. **A-7** OF **39**

C:\NVR\Solves\LNDNO_02\CH-5317\040510\Sheets\1st_Spec\19_A-7_Plan_LS.dwg 12/04/18 - 3:18 am



LEGEND

- BEARING WALL
- NON BEARING WALL
- INDICATES BEARING FROM POINT-LOAD ABOVE
- JACKS
- BEAM/HEADER
- PAD FOOTING
- STEEL COLUMN
- PORTAL FRAME
- JOIST/TRUSS
- LVL
- ENGINEERING PAGE NUMBER

SEE FC DETAILS FOR FRAMING CONNECTORS

- FLOOR PLAN NOTES**
- ALL HEADERS ARE (2) 2x6 w/ 2x4 WALLS OR (3) 2x6 w/ 2x6 WALLS, UNLESS OTHERWISE NOTED.
 - ALL HEADERS TO HAVE (1) 2x4 OR 2x6 JACK EACH END, UNLESS OTHERWISE NOTED.
 - ALL EXTERIOR WALLS TO BE 4" AND ALL INTERIOR WALLS TO BE 3 1/2", UNLESS OTHERWISE NOTED.
 - HATCHED AREAS INDICATE DROPPED CEILINGS. ALL DROPPED CEILINGS ARE 12" UNLESS OTHERWISE NOTED.
 - SEE "BRACED WALL PANEL DETAIL SHEET" FOR SPECIAL WALL FRAMING LOCATIONS AND HEADER SIZES, IF APPLICABLE.
 - SEE STANDARD DETAIL CATEGORY "IT" SHEET(S) FOR INTERIOR TRIM DETAILS.
 - SEE ARCHITECTURAL DETAIL SHEET "AD" FOR HOUSE SPECIFIC INTERIOR TRIM OPTION TABLE.
 - ALL WINDOWS HAVE 7'-0 1/2" HEADER HEIGHT UNLESS OTHERWISE NOTED.

- GYPSUM NOTES**
- AT GARAGE:
GYPSUM BOARD AT COMMON WALLS, CEILINGS, BEAM WRAPS AND SUPPORTS PER STANDARD DETAIL FA-1(b) FIRE ASSEMBLIES OR AS REQUIRED BY LOCAL CODE.
- AT STAIRS:
1/2" GYPSUM BOARD AT UNDERSIDE OF STAIRS AND WALLS IN CLOSET

SECOND FLOOR PLAN
SCALE: 1/4" = 1'-0"

SECOND FLOOR JACK SCHEDULE

IDENTIFIER	DESCRIPTION	OPTIONS	ENG. NUM.	REMARKS
J201	JACK - (2) 2X4 SFF STUD GRADE	ELC, ELL	2001a	
J202	JACK - (2) 2X4 SFF STUD GRADE	ELC, ELL, MAV	2001	
J203	JACK - (2) 2X4 SFF STUD GRADE	ELC, ELL, MAV	2001	
J204	JACK - (2) 2X4 SFF STUD GRADE	MAV		
J205	JACK - (2) 2X4 SFF STUD GRADE	MAV		
J206	JACK - (2) 2X4 SFF STUD GRADE	ELC, ELL, MAV	2001	
J208	JACK - (2) 2X4 SFF STUD GRADE	ELC, ELL, MAA	2000	
J211	JACK - (3) 2X6 SFF STUD GRADE	ELC	2000	EXTEND TO THRU. TOP PLATE
J212	JACK - (3) 2X6 SFF STUD GRADE	ELC	2000	EXTEND TO THRU. TOP PLATE
J213	JACK - (2) 2X4 SFF STUD GRADE	ELC	2010	

REMARKS

REV. NO. DATE

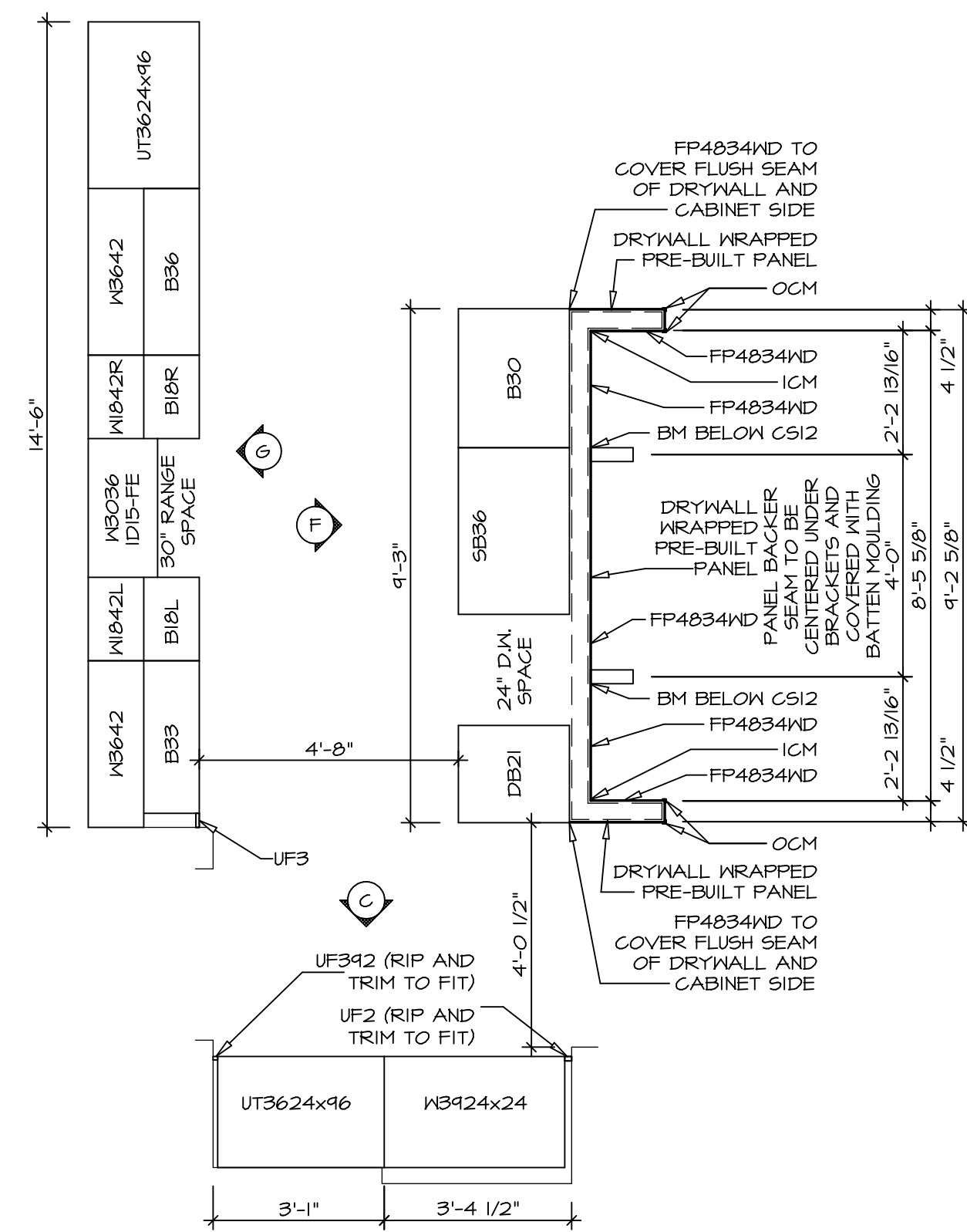
SET NO. LDN00
VERSION 02
DRAWN BY SDTT
DATE: 7/3/15
OPTION

MODEL
LANDON
DRAWING TITLE
SECOND FLOOR PLAN
OPTION DESCRIPTION

SHEET NO.
A-8
41

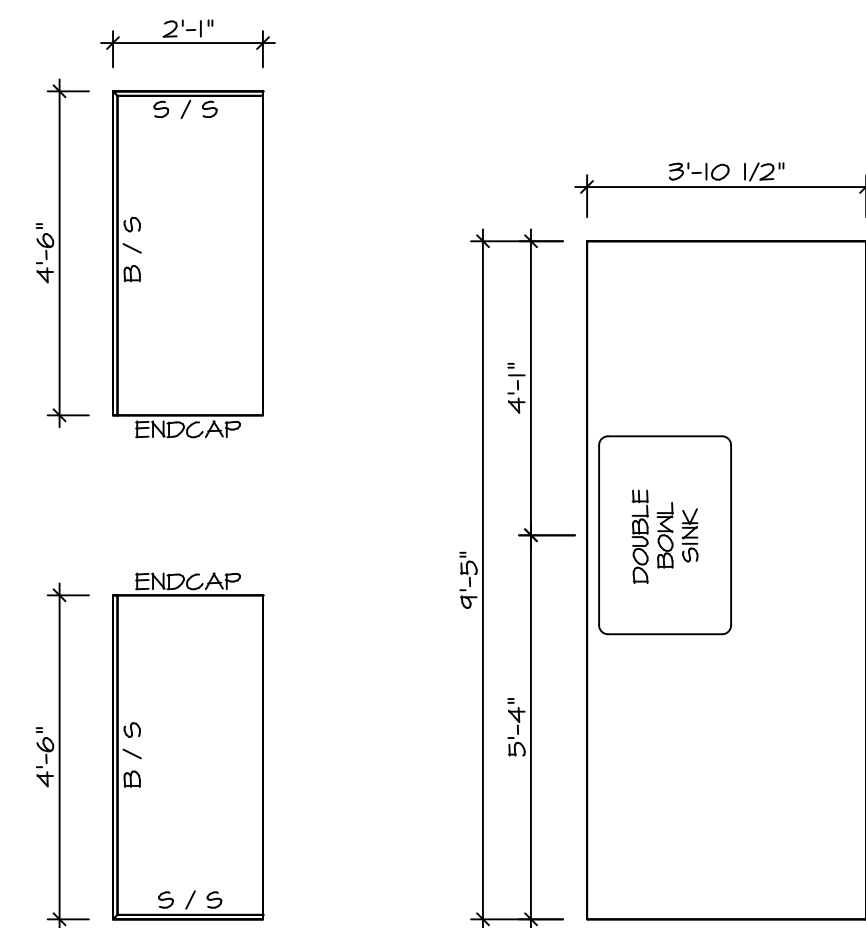
NVR
NVR, Inc.
Architectural Services
Suite 100
5285 Washburn Ave
Frederick, MD 21703

C:\NVR\Solves\LANDON_LDNO0_02\DCI-CH-5317\040310\Sheets\01_Spec\01_A-8_PLN2_LS.dwg 12/04/18 3:18 am



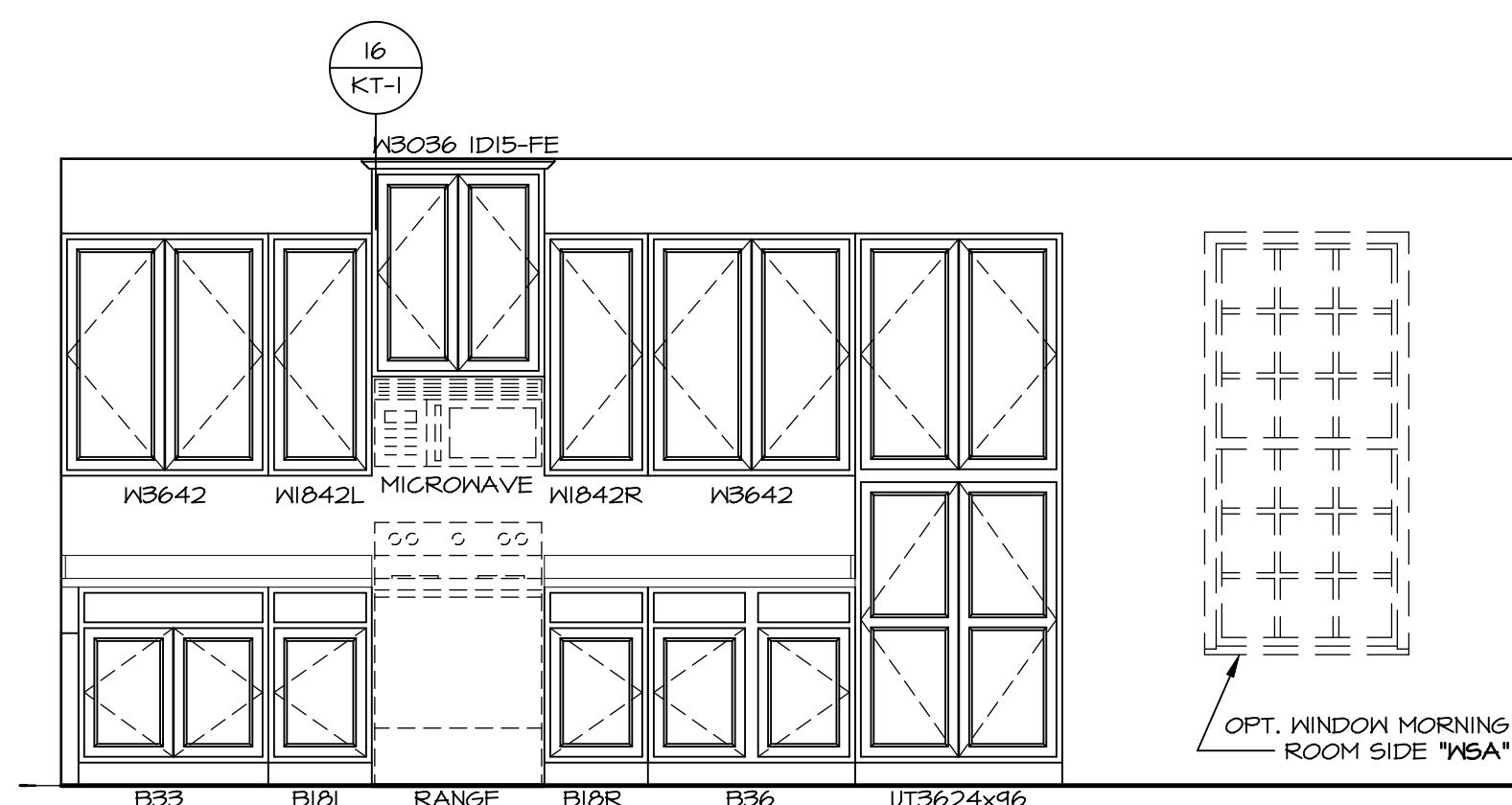
CABINET PLAN
KC - 2960

SCALE: 3/8" = 1'-0" A-12



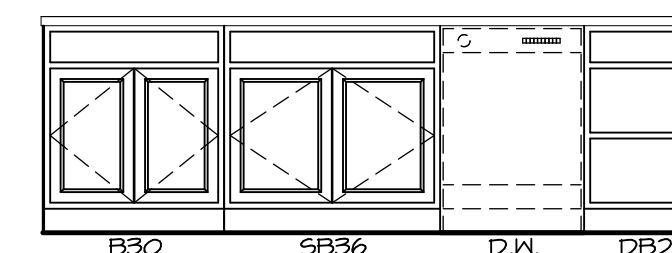
COUNTERTOP PLAN
KC - 2960

SCALE: 3/8" = 1'-0" A-12



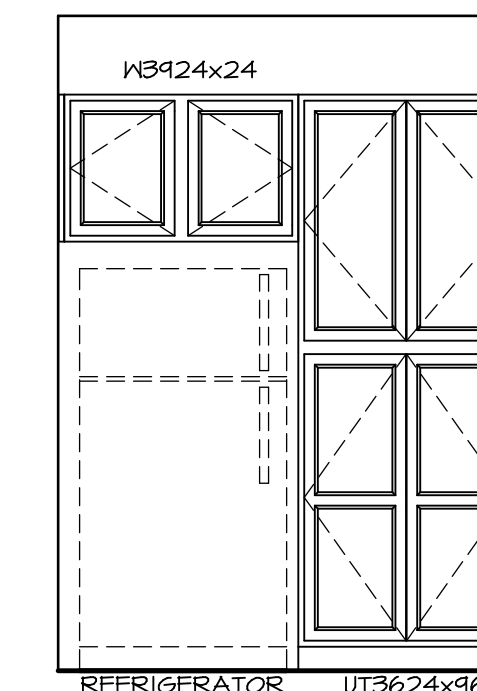
ELEVATION "G"

SCALE: 3/8" = 1'-0" G



ELEVATION "F"

SCALE: 3/8" = 1'-0" F



ELEVATION "C"

SCALE: 3/8" = 1'-0" C

SHEET NO. **A-12**
MODEL **LONDON**
DRAWING TITLE **KITCHEN PLAN**
OPTION DESCRIPTION

SET NO. **LDN00**
VERSION **02**
DRAWN BY **SDTT**
DATE: **8/6/15**
OPTION

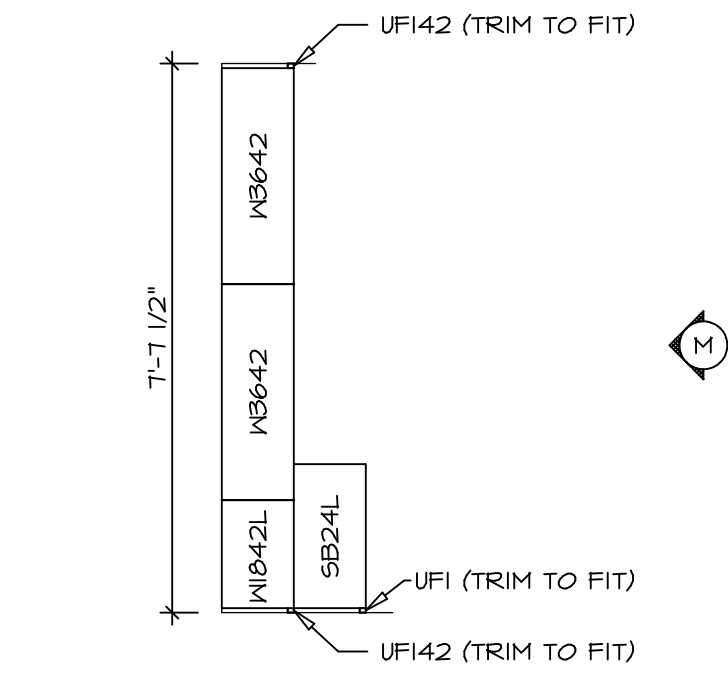
NVR
Architectural Services
5285 Westover Hills
Frederick, MD 21703

NVR, Inc., owner, expressly reserves its copyright in these plans. These plans are not to be reproduced, changed, copied, or otherwise used in any way without the written consent of NVR, Inc.

REV. NO. DATE

REMARKS

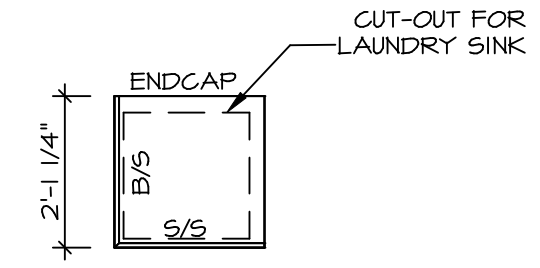
51



CABINET PLAN
KC - 2964

SCALE: 3/8" = 1'-0"

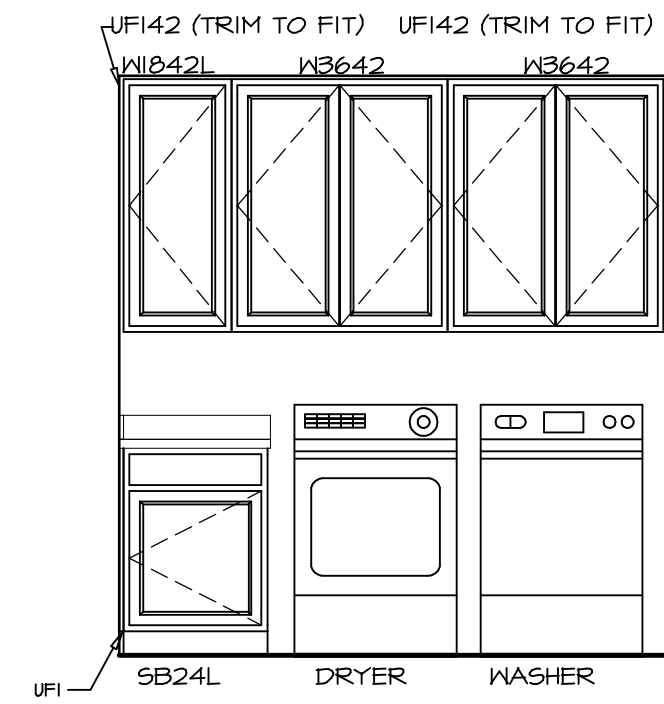
1
A-12b



COUNTERTOP PLAN
KC - 2964

SCALE: 3/8" = 1'-0"

2
A-12b



ELEVATION "M"

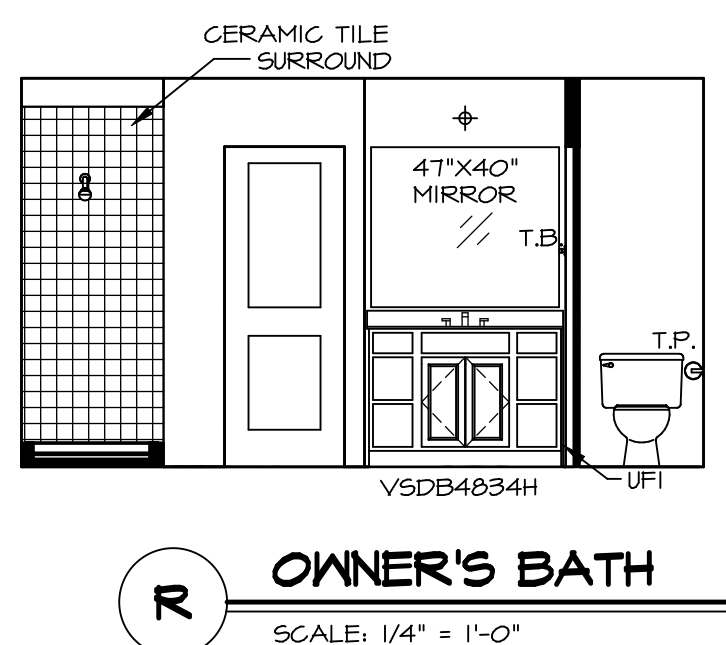
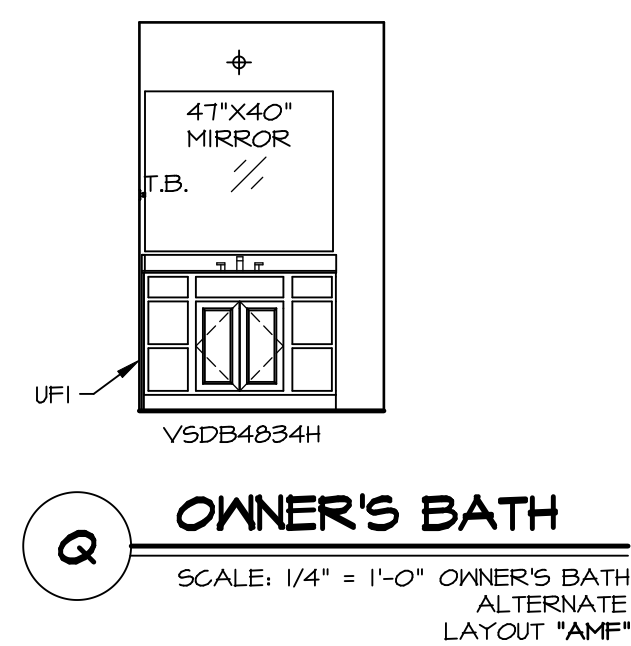
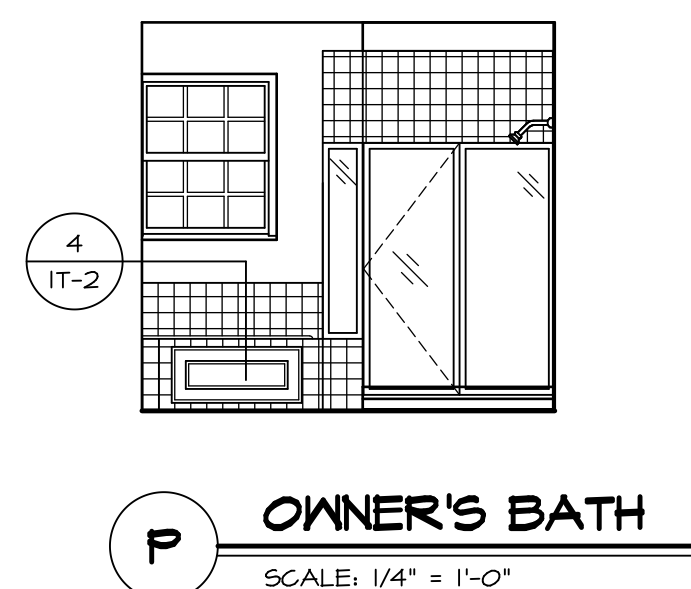
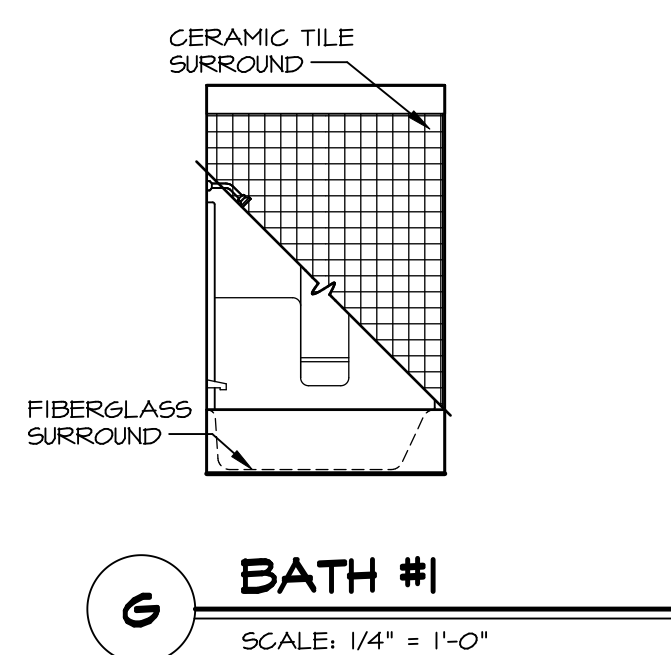
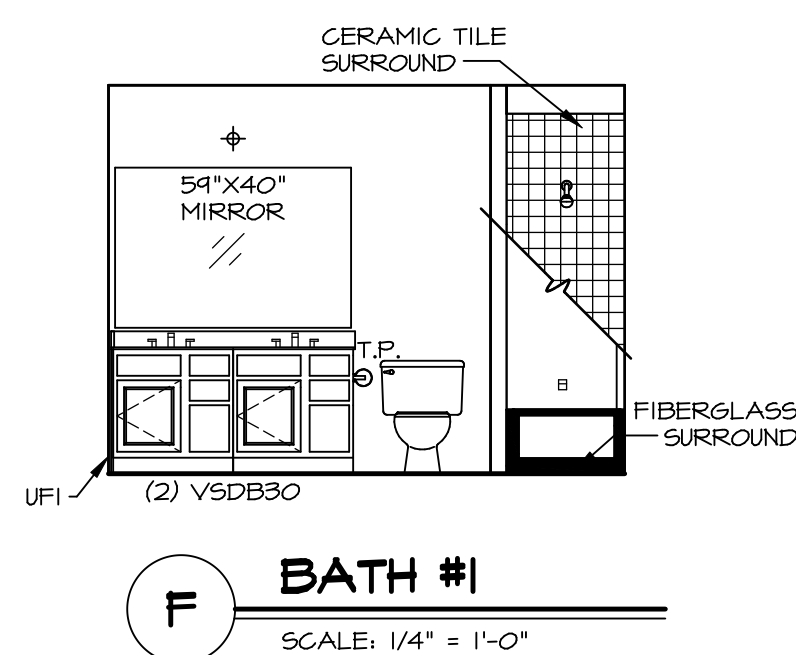
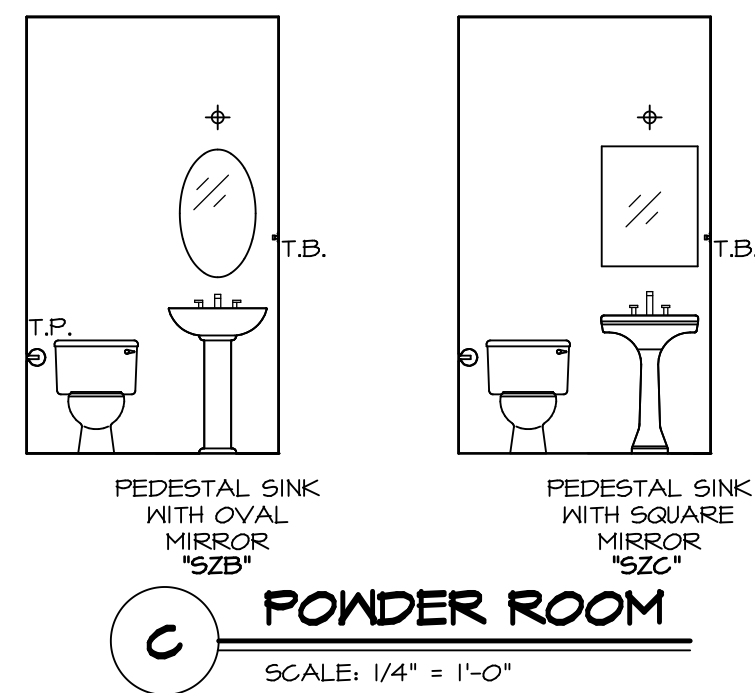
SCALE: 3/8" = 1'-0"

M

SHEET NO. A-12b	MODEL LONDON	DRAWING TITLE KITCHEN PLAN - ADDITIONAL CABINETS	SET NO. LDN00	REV. NO. 1	DATE	REMARKS
			VERSION 02	REV. NO. 2	DATE	
OPTION DESCRIPTION			OPTION			
52	<p>NVR, Inc., owner, expressly reserves its copyright in these plans. These plans are not to be reproduced, changed, copied, or used in any way without the written consent of NVR, Inc.</p>					
<p>NVR Architectural Services 5285 Westview Drive Frederick, MD 21703</p>			<p>SET NO. LDN00 VERSION 02 DRAWN BY SDTT DATE: 8/6/15 OPTION</p>			

NOTES:

1. TEMPERED GLASS SHOWER ENCLOSURE WITH SWING DOOR OR OPTIONAL SLIDING DOOR BY DIVISION
2. TUB ACCESS PANELS PROVIDED AS NEEDED, ALL MATERIALS BY DIVISION
3. REFER TO SHEET IT-2 FOR TUB AND SHOWER DETAILS.
4. ALL VSDB24-42 DRAWERS TO BE SET ON RIGHT HAND.
5. BATH ELEVATIONS ARE SHOWN PER PLAN.



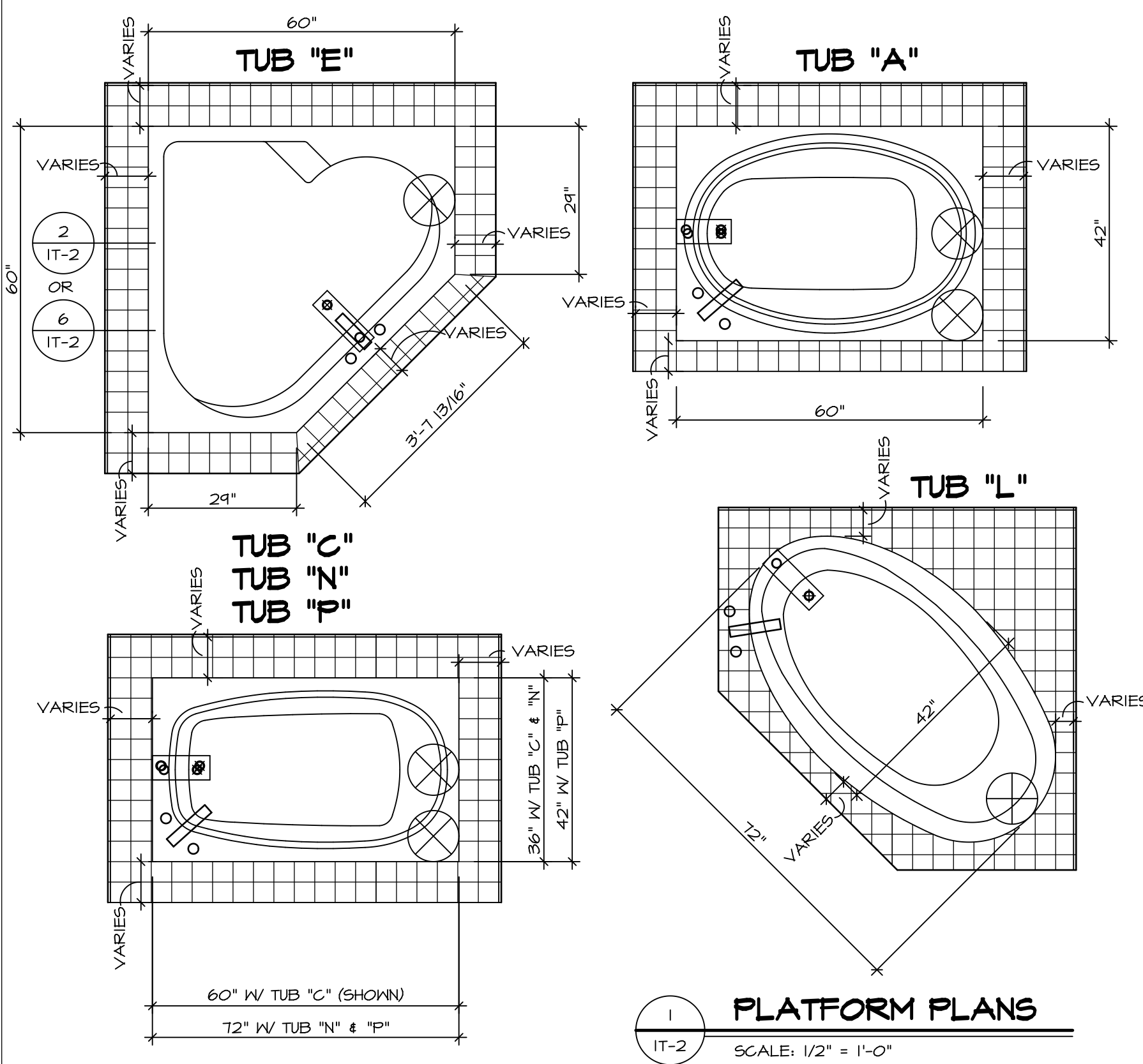
SHEET NO.	DRAWING TITLE	DATE	OPTION	REMARKS
A-13	BATH ELEVATIONS	7/30/15	OPTION	
55				

NVR
Architectural Services
5285 Westpark Drive, Suite 100
Frederick, MD 21703

NVR, Inc., owner, expressly reserves its copyright in these plans. These plans are not to be reproduced, changed, copied in any way, or used for any purpose not assigned to NVR, Inc. without the written consent of NVR, Inc.

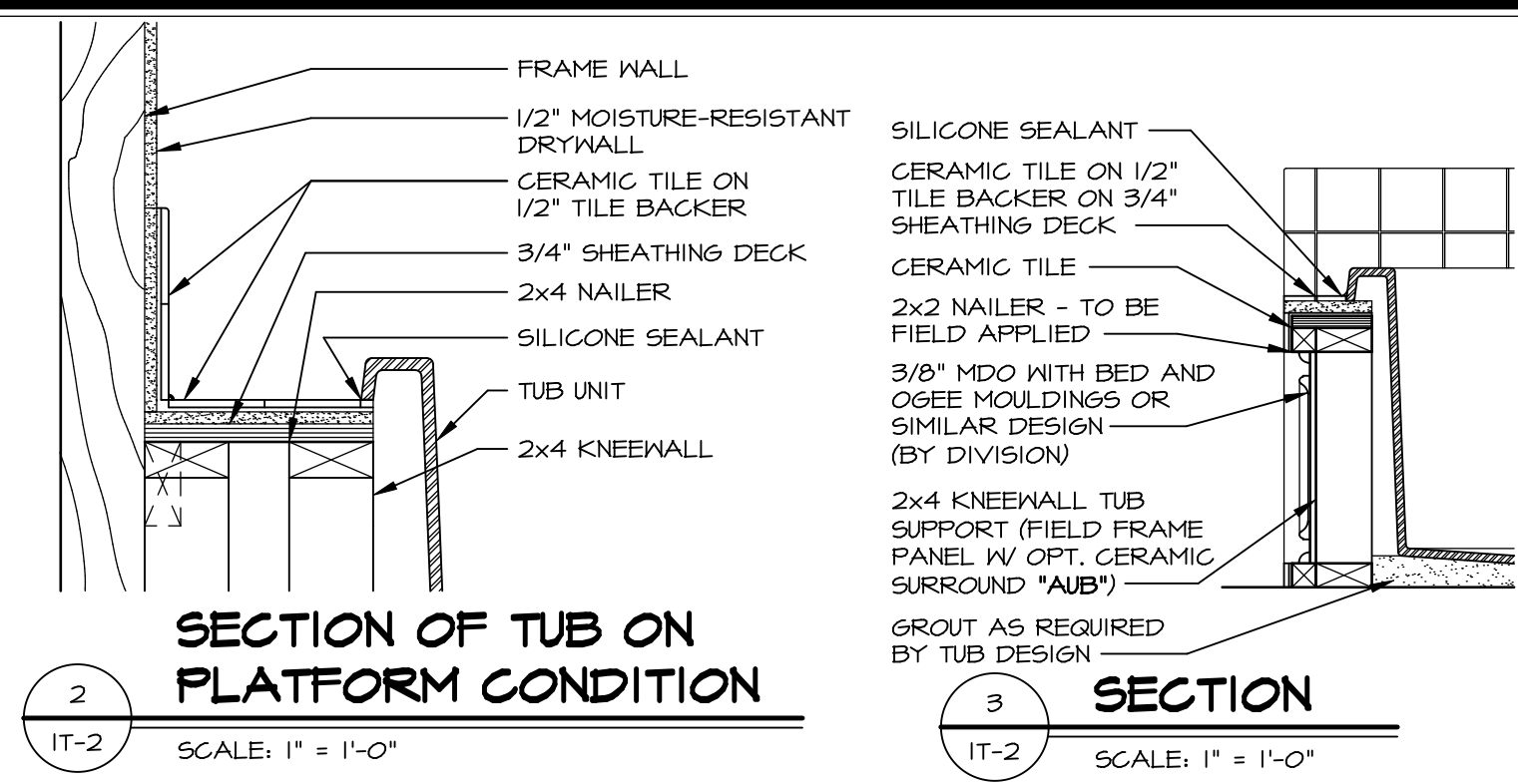
MODEL: LANDON
DRAWING TITLE: BATH ELEVATIONS
OPTION DESCRIPTION:
SET NO. LDN00
VERSION 02
DRAWN BY SDTT
DATE: 7/30/15
OPTION

C:\NVR\Server\LANDON_LDNO0_02\DC-CH-5317\040510\Sheets\01_Spec\05 A-13 BATH LS.dwg 12/04/18 - 3:18 am

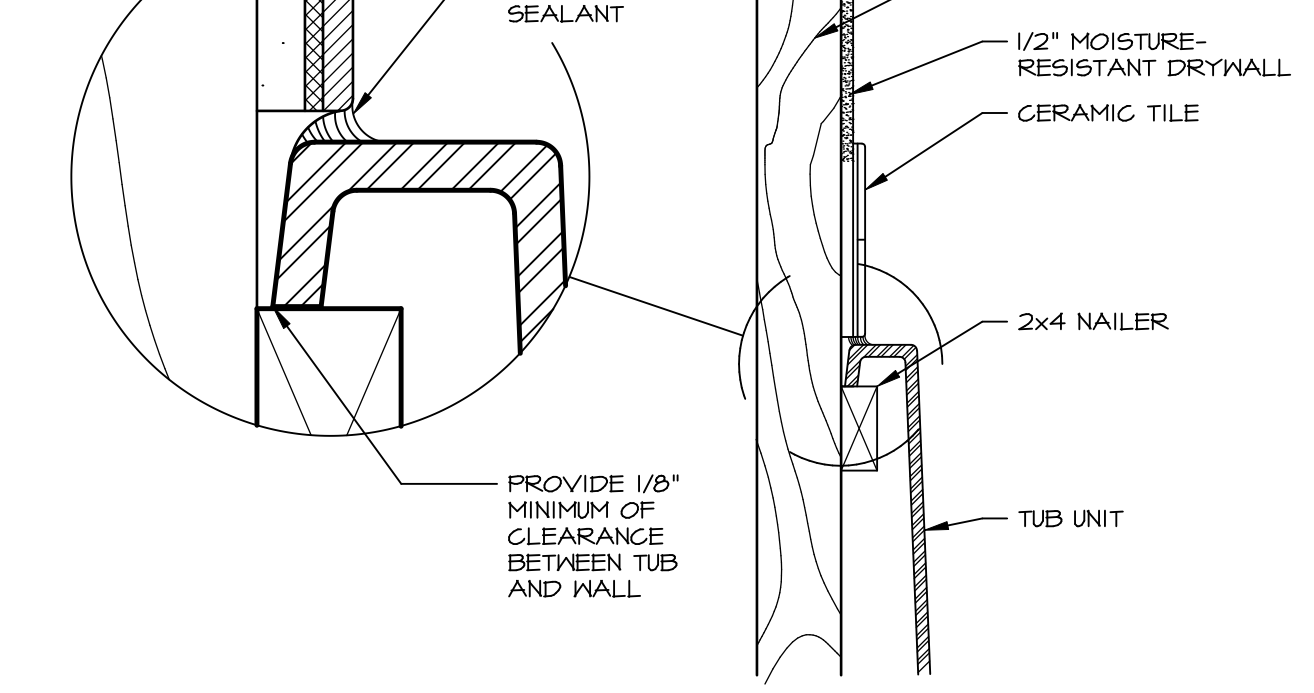


1 PLATFORM PLANS
SCALE: 1/2" = 1'-0"

TUB	MANUF.	HEIGHT	WIDTH	LENGTH	TUB DECK PANEL HEIGHT
"A"	KOHLER/STERLING	18 3/4"	42"	60"	17 1/8"
"C"	KOHLER/STERLING	18 3/4"	36"	60"	17 1/8"
"E"	KOHLER/STERLING	19 1/2"	60"	60"	17 7/8"
"L"	KOHLER/STERLING	18 1/2"	42"	72"	16 7/8"
"N"	KOHLER/STERLING	18 3/4"	36"	72"	17 1/8"
"P"	KOHLER/STERLING	18 3/4"	42"	72"	17 1/8"



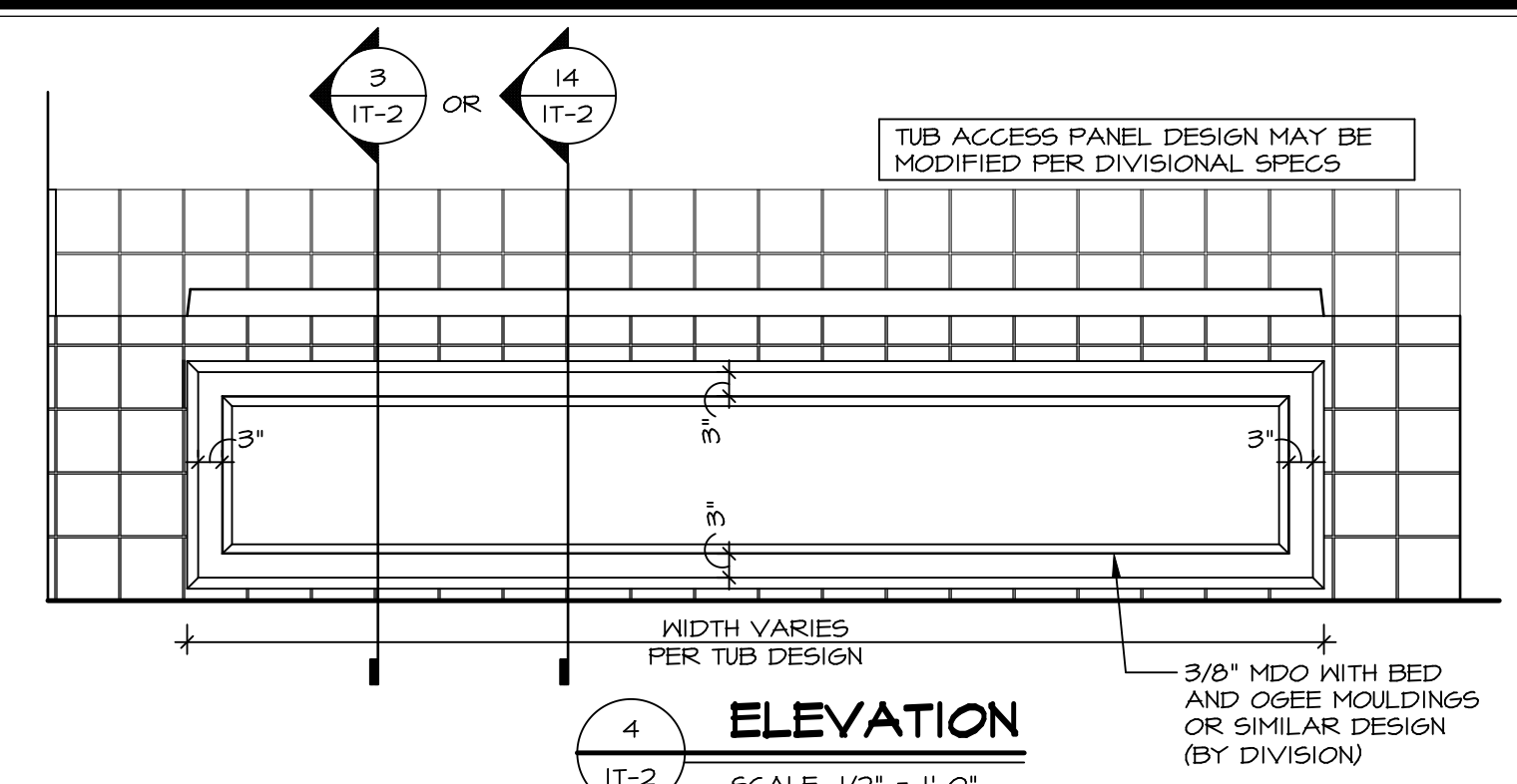
2 SECTION OF TUB ON PLATFORM CONDITION
SCALE: 1" = 1'-0"



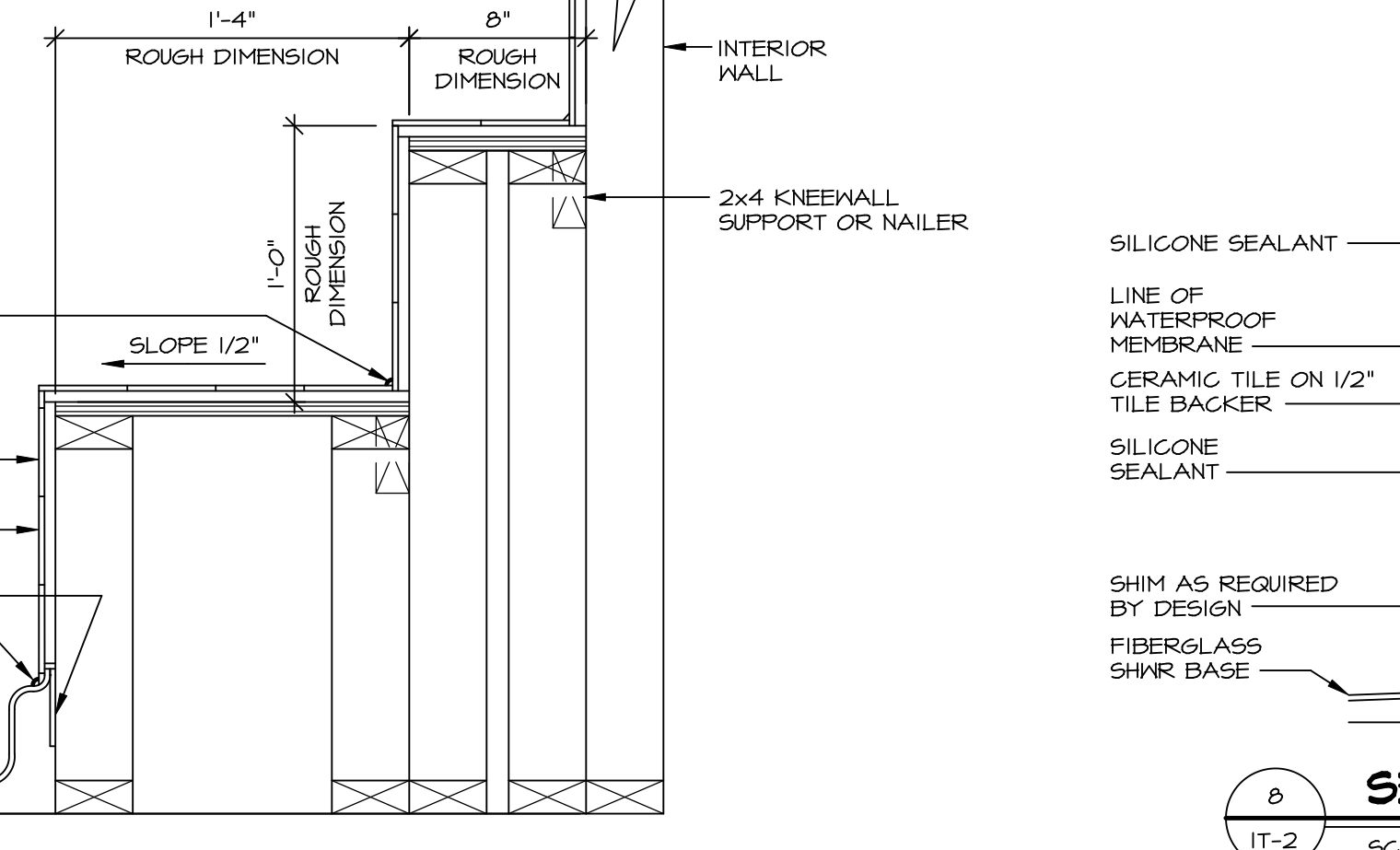
3 SECTION
SCALE: 1" = 1'-0"



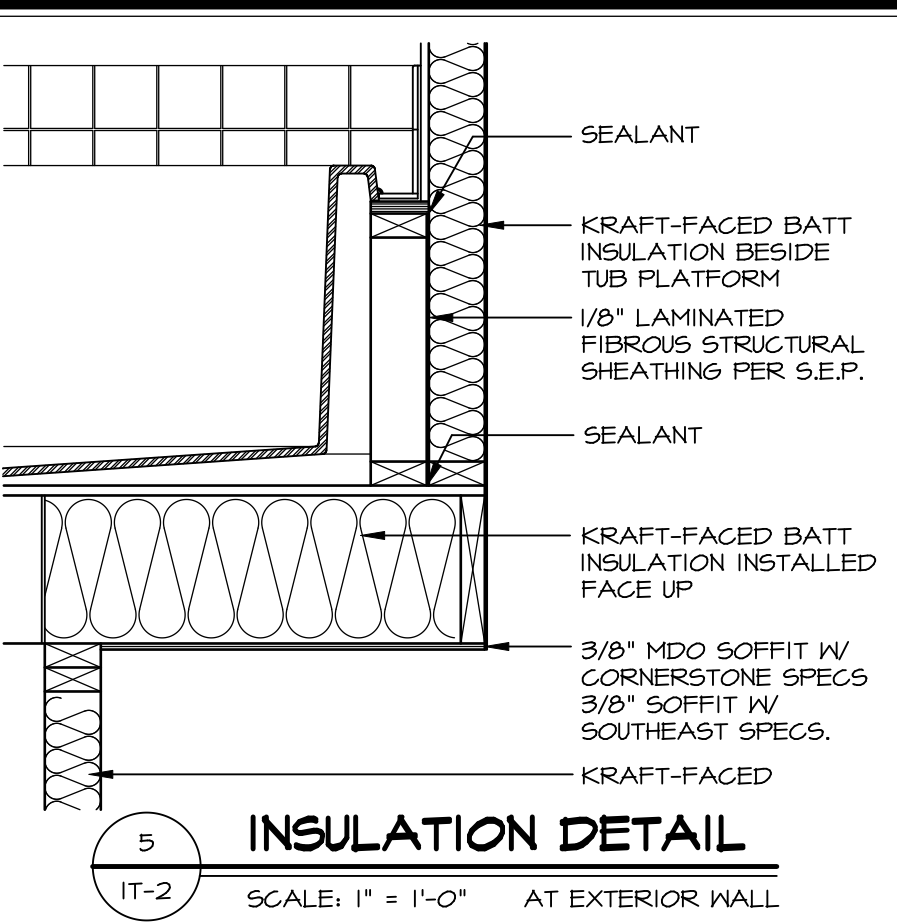
6 SECTION OF TUB TO WALL CONDITION
SCALE: 1 1/2" = 1'-0"



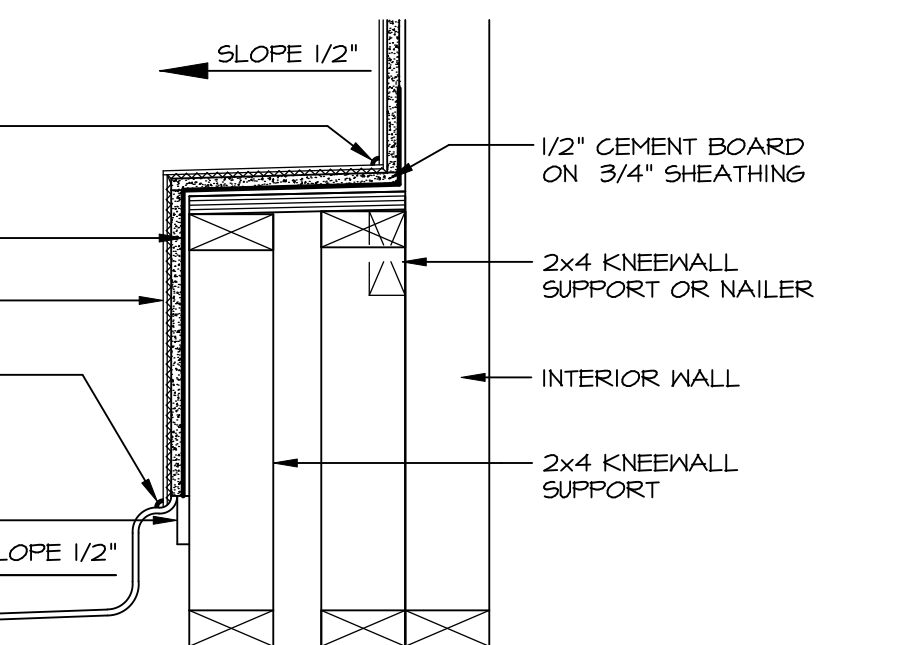
4 ELEVATION
SCALE: 1/2" = 1'-0"



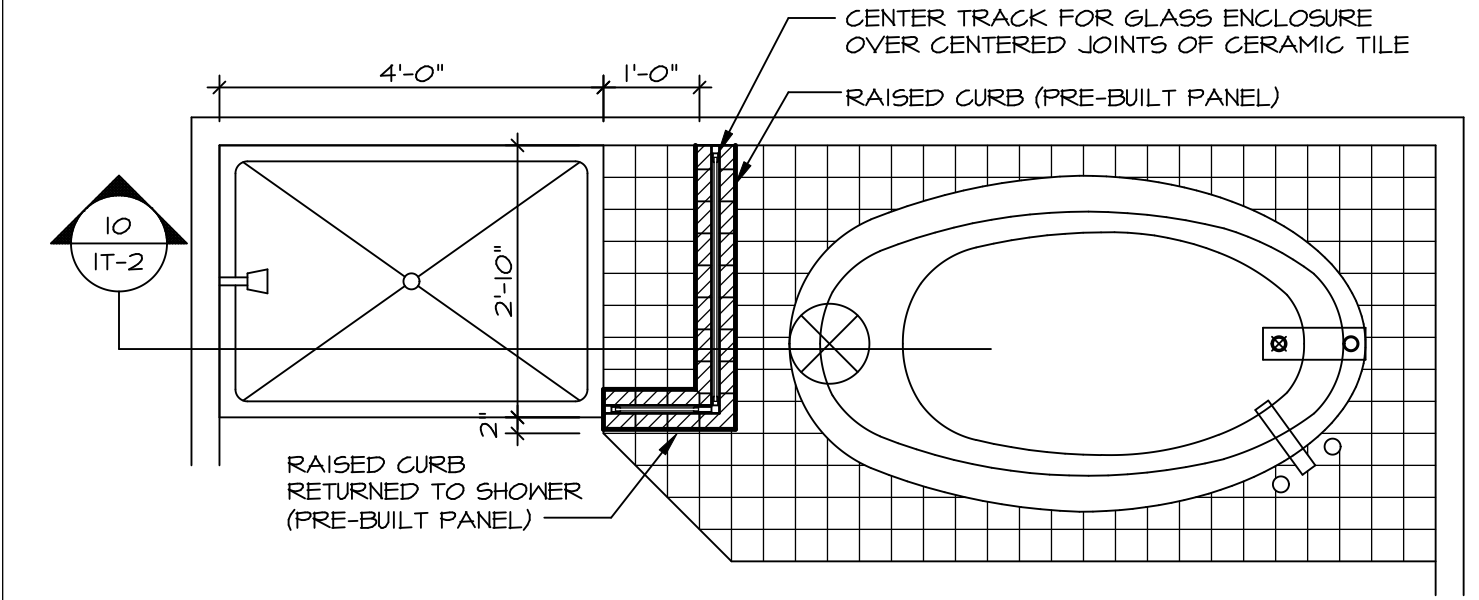
7 SECTION OF SHOWER SEAT AND SHELF
SCALE: 1 1/2" = 1'-0"



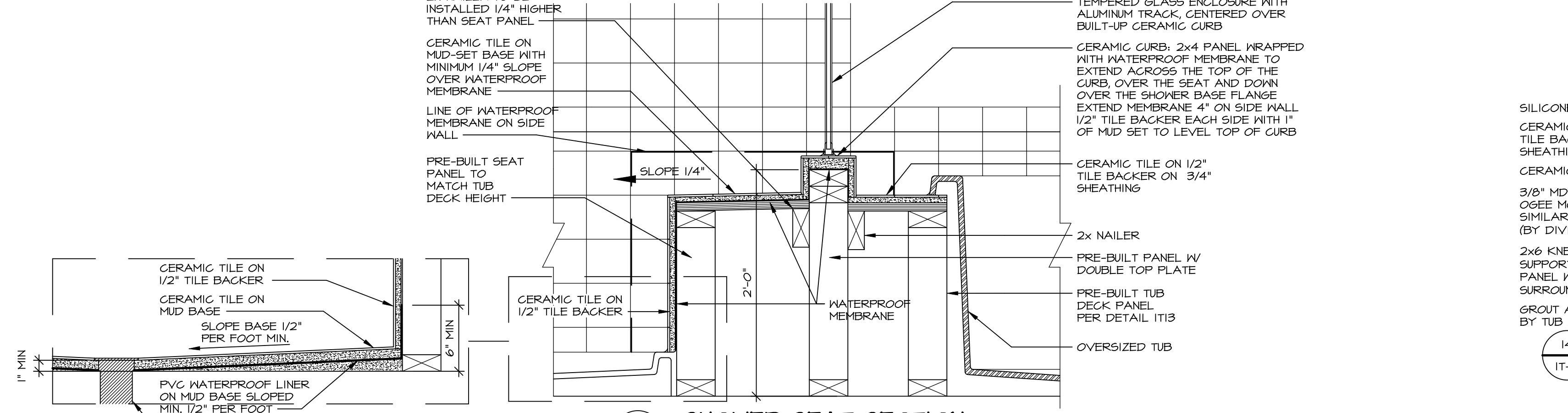
5 INSULATION DETAIL
SCALE: 1" = 1'-0" AT EXTERIOR WALL



8 SECTION OF SHOWER SEAT
SCALE: 1-1/2" = 1'-0" FIBERGLASS SHOWER BASE



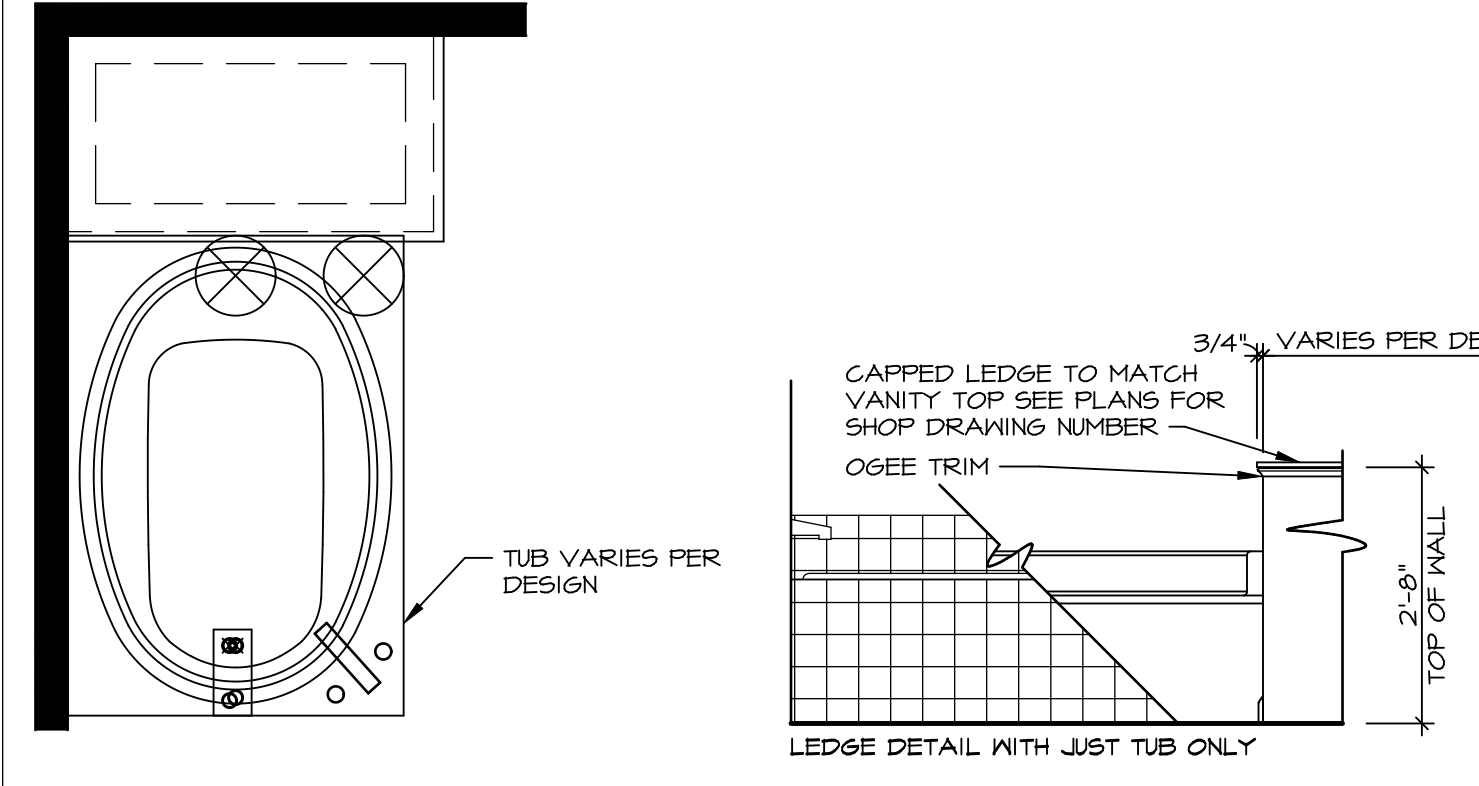
9 SHOWER SEAT PLAN / DETAIL
SCALE: 1/2" = 1'-0"



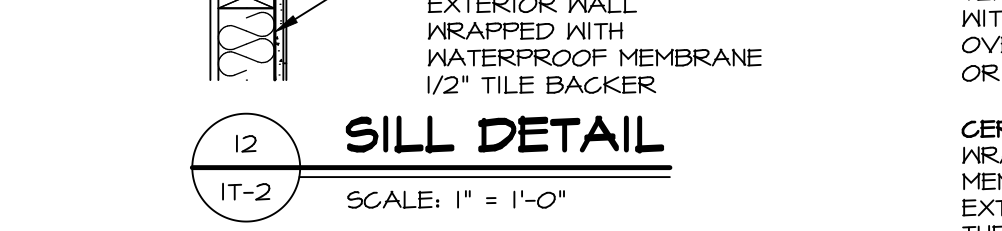
10 SHOWER SEAT SECTION
SCALE: 1-1/2" = 1'-0"



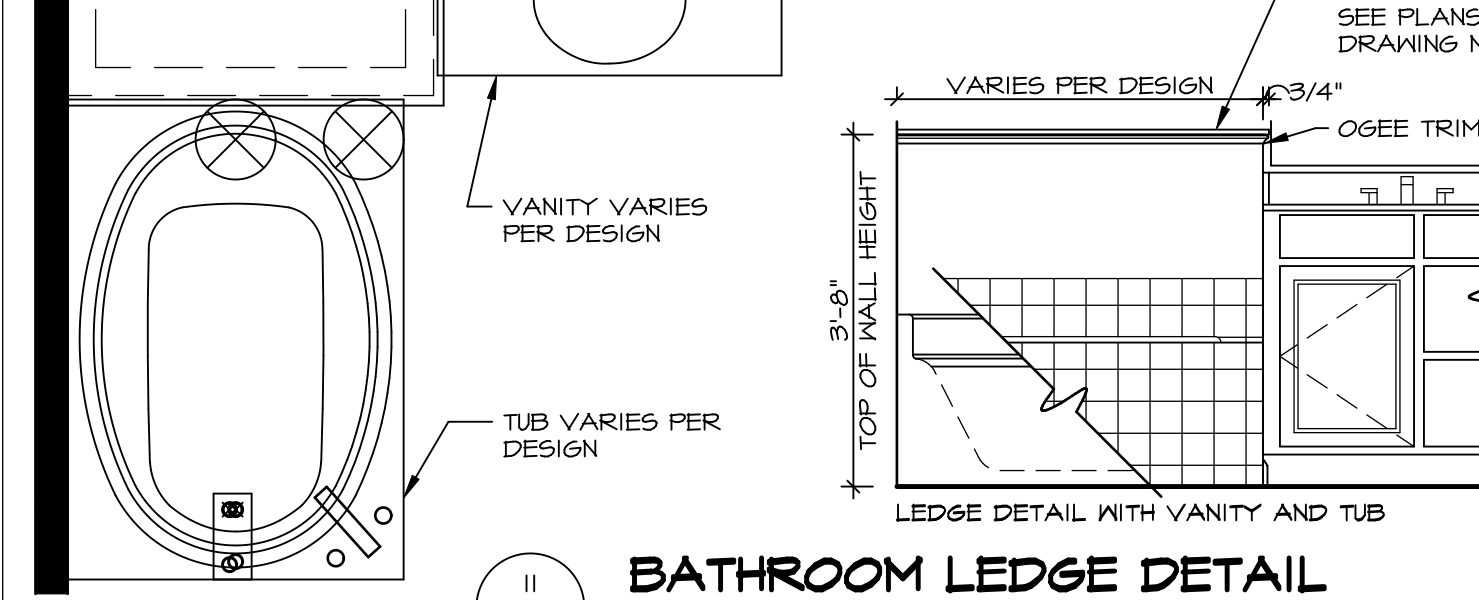
11 ALTERNATE SHOWER PAN DETAIL
SCALE: 1 1/2" = 1'-0"



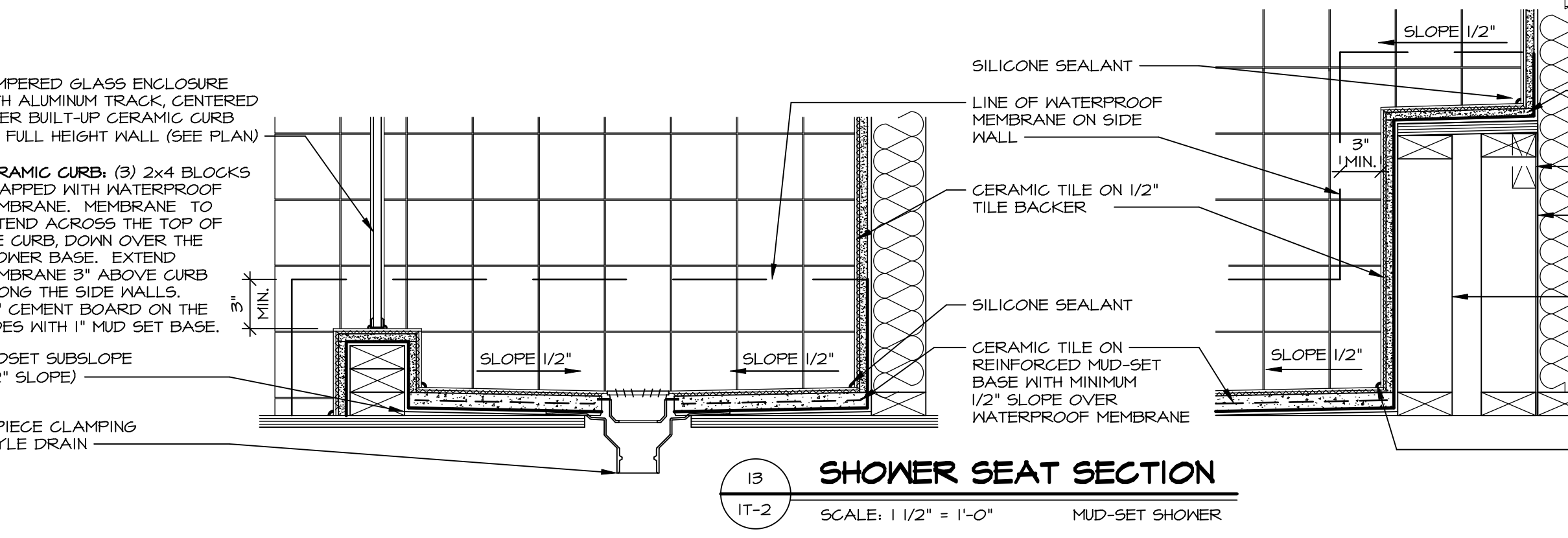
12 BATHROOM LEDGE DETAIL
SCALE: 1/2" = 1'-0"



13 SILL DETAIL
SCALE: 1" = 1'-0"



14 BATHROOM LEDGE DETAIL
SCALE: 1/2" = 1'-0"



13 SHOWER SEAT SECTION
SCALE: 1 1/2" = 1'-0" MUD-SET SHOWER

REVISIONS

REV. NO.	DATE	DESCRIPTION
1	5/1/17	EBP - REVISED DETAIL I AND II TO REMOVE TUB ACCESS PANEL REF. (099 #15 3414)
2	9/2/17	EBP - REVISED T-FLY NOTE TO CALL OUT LFS
3	9/2/17	EBP - REVISED NOTE ON DETAIL #1 - REVISED ORDER OF MATERIAL PARA#4934
4	8/28/18	EBP - DTL 8 / 19 ME REMOVED THE 2x6 BULKING AT BASE OF SHWR REQUEST #4663

REMARKS

1. NVR, Inc., owner, expressly reserves its common law copyright and other property rights in these plans. These plans are not to be copied, reproduced, or otherwise used in any way without the prior written consent of NVR, Inc.

2. NVR, Inc. Architectural Services
Architects
5285 West... Suite 100
Frederick, MD 21703

SET NO. NVR
VERSION
DRAWN BY
DATE
OPTION

MODEL
STANDARD DETAILS
DRAWING TITLE
INTERIOR TRIM DETAILS
BATH DETAILS
OPTION DESCRIPTION

SHEET NO. **IT-2**

C:\Users\epeterson\AppData\Local\Temp\1\MapPublish\16612\IT2.dwg 11/01/18 - 2:42 pm