

FIRST FLOOR PLAN
SCALE: 1/4" = 1'-0"

LEGEND

- BEARING WALL
- NON BEARING WALL
- INDICATES BEARING FROM POINT-LOAD ABOVE
- JACKS
- BEAM/HEADER
- PAD FOOTING
- STEEL COLUMN
- PORTAL FRAME
- JOIST/TRUSS
- LVL
- ENGINEERING PAGE NUMBER

SEE FC DETAILS FOR FRAMING CONNECTORS

- FLOOR PLAN NOTES**
- ALL HEADERS ARE (2) 2x6 w/ 2x4 WALLS OR (3) 2x6 w/ 2x6 WALLS, UNLESS OTHERWISE NOTED.
 - ALL HEADERS TO HAVE (1) 2x4 OR 2x6 JACK AND KING STUD EACH END, UNLESS OTHERWISE NOTED.
 - ALL EXTERIOR WALLS TO BE 4" w/ OSB OR 3 1/2" w/ LAMINATED FIBROUS STRUCTURAL SHEATHING. ALL INTERIOR WALLS TO BE 3 1/2", UNLESS OTHERWISE NOTED. HATCHED AREAS INDICATE DROPPED CEILINGS. ALL DROPPED CEILINGS ARE 12" UNLESS OTHERWISE NOTED.
 - SEE "BRACED WALL PANEL DETAIL SHEET" FOR SPECIAL WALL FRAMING LOCATIONS AND HEADER SIZES, IF APPLICABLE.
 - SEE STANDARD DETAIL CATEGORY "11" SHEET(S) FOR INTERIOR TRIM DETAILS.
 - SEE ARCHITECTURAL DETAIL SHEET "AD" FOR HOUSE SPECIFIC INTERIOR TRIM OPTION TABLE.
 - ALL WINDOWS HAVE 7'-0 1/2" HEADER HEIGHT UNLESS OTHERWISE NOTED.
 - ALL HEADERS IN NON-BEARING WALLS SHALL BE A SINGLE FLAT 2x4 OR 2x6 ATTACHED TO CRIPPLES ABOVE, UNLESS OTHERWISE NOTED.
 - TANKED WATER HEATER SHOWN AS BASE CONDITION, OPTIONAL TANKLESS WATER HEATER IS AVAILABLE IN LIEU OF TANKED WATER HEATER.

- GYPSUM NOTES**
- AT GARAGE:
GYPSUM BOARD AT COMMON WALLS, CEILING, BEAM WRAPS AND SUPPORTS PER STANDARD DETAIL FA-1(b) FIRE ASSEMBLIES OR AS REQUIRED BY LOCAL CODE.
- AT STAIRS:
1/2" GYPSUM BOARD AT UNDERSIDE OF STAIRS AND WALLS IN CLOSET

FIRST FLOOR JACK SCHEDULE

| IDENTIFIER | DESCRIPTION | OPTIONS | ENG. NUM. |
|------------|-------------------------------|----------|------------|
| J100 | JACK - (5) 2X4 SFP# | | 2000 |
| J105 | JACK - (4) 2X6 SFF STUD GRADE | ELL | 2000 |
| J106 | JACK - (3) 2X6 SFF STUD GRADE | | 1016 |
| J107 | JACK - (4) 2X4 SFF STUD GRADE | | 1016 |
| J108 | JACK - (2) 2X4 SFF STUD GRADE | | 1036 |
| J109 | JACK - (2) 2X4 SFF STUD GRADE | | 1032 |
| J112 | JACK - (3) 2X4 SFF STUD GRADE | EPE | 1042 |
| J113 | JACK - (3) 2X4 SFF STUD GRADE | EPE | 1042 |
| J114 | JACK - (2) 2X4 SFF STUD GRADE | | 1013 |
| J115 | JACK - (3) 2X6 SFF STUD GRADE | | 1013 |
| J116 | JACK - (2) 2X4 SFF STUD GRADE | | 1026 |
| J119 | JACK - (5) 2X6 SFP# | 5XC | 1044, 1044 |
| J120 | JACK - (5) 2X6 SFF STUD GRADE | 6CB, 6CF | 1044, 1044 |
| J121 | JACK - (2) 2X4 SFF STUD GRADE | 6CB, 6CF | 1055 |
| J122 | JACK - (2) 2X4 SFF STUD GRADE | 6CB, 6CF | 1055 |

FIELD INSTALLED FIRST FLOOR BEAM/HEADER SCHEDULE

| IDENTIFIER | DESCRIPTION | LENGTH | OPTIONS | ENG. NUM. | REMARKS |
|------------|--------------------------|--------|----------|------------|-------------------------|
| B100 | BEAM STEEL - W12X35 | 20'-2" | 5XC | 1044, 1044 | |
| B105 | INT HEADER - 2X8 - 2 PLY | 6'-7" | | 1013 | |
| PF101-2 | LVL 1.75 - 11-04 | 19'-4" | 6CB, 6CF | 1055 | 2-PLY, 1A, PORTAL FRAME |

- LVL PLY TO PLY FASTENING SCHEDULE:** (WHERE APPLICABLE BASED ON LVL USAGE)
- 1A - (2) PLY UP TO AND INCLUDING 11 7/8" TALL; FASTEN PLYS W/ (2) ROWS 16D NAILS AT 12" O.C. OR ALT 1 1/2" WIDE LVL FASTEN PLYS W/ (3) ROWS 12D NAILS AT 12" O.C.
 - 2A - (2) PLY 14" TO AND 18" TALL (INCLUSIVE); FASTEN PLYS W/ (3) ROWS 16D NAILS AT 12" O.C. OR ALT 1 1/2" WIDE LVL FASTEN PLYS W/ (4) ROWS 12D NAILS AT 12" O.C.
 - 3A - (2) PLY 20" TALL AND OVER; FASTEN PLYS W/ (4) ROWS 16D NAILS AT 12" O.C. OR ALT 1 1/2" WIDE LVL FASTEN PLYS W/ (5) ROWS 12D NAILS AT 12" O.C.
 - 4A - (3) PLY UP TO AND INCLUDING 11 7/8" TALL; FASTEN PLYS W/ (2) ROWS 16D NAILS AT 12" O.C. FROM EACH SIDE OR ALT 1 1/2" WIDE LVL FASTEN PLYS W/ (3) ROWS 12D NAILS AT 12" O.C. FROM EACH SIDE.
 - 5A - (3) PLY 14" TO AND 18" TALL (INCLUSIVE); FASTEN PLYS W/ (3) ROWS 16D NAILS AT 12" O.C. FROM EACH SIDE OR ALT 1 1/2" WIDE LVL FASTEN PLYS W/ (4) ROWS 12D NAILS AT 12" O.C. FROM EACH SIDE.
 - 6A - (3) PLY 20" TALL AND OVER; FASTEN PLYS W/ (4) ROWS 16D NAILS AT 12" O.C. FROM EACH SIDE OR ALT 1 1/2" WIDE LVL FASTEN PLYS W/ (5) ROWS 12D NAILS AT 12" O.C. FROM EACH SIDE.
 - 7A - (4) PLY (ALL SIZES); FASTEN PLYS W/ (2) ROWS 1/2" DIAMETER A307 BOLTS AT 24" O.C. SEE SHOP DRAWING FOR ADDITIONAL INFORMATION.

REMARKS

REV. NO. DATE

NVR, Inc., owner, expressly reserves its copyright in these plans. These plans are not to be reproduced, changed, altered, or otherwise used in any way without the written consent of NVR, Inc.

NVR
Architectural Services
5285 Washington Blvd
Frederick, MD 21703

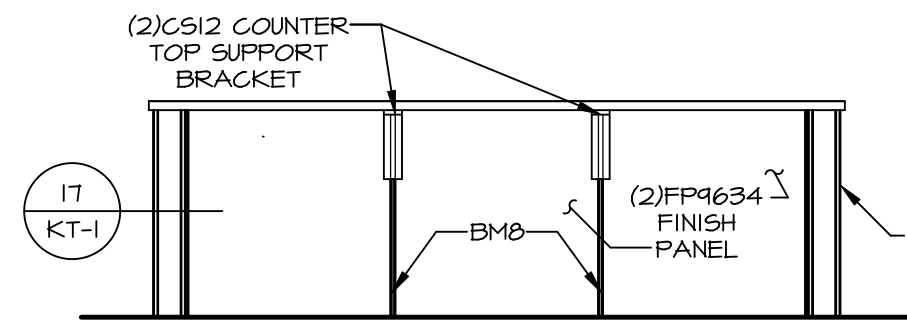
SET NO. LGH00
VERSION 01
DRAWN BY
DATE:
OPTION

MODEL
LEHIGH
DRAWING TITLE
FIRST FLOOR PLAN
OPTION DESCRIPTION

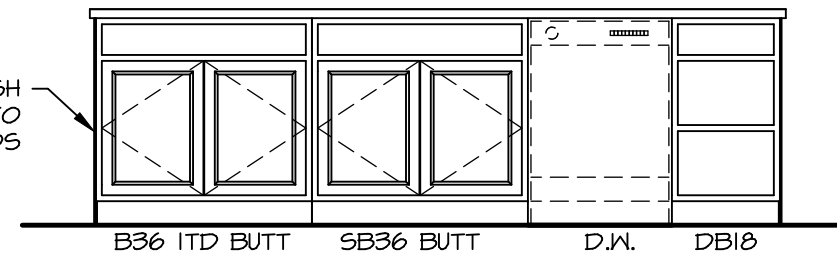
SHEET NO. **A-7**

30

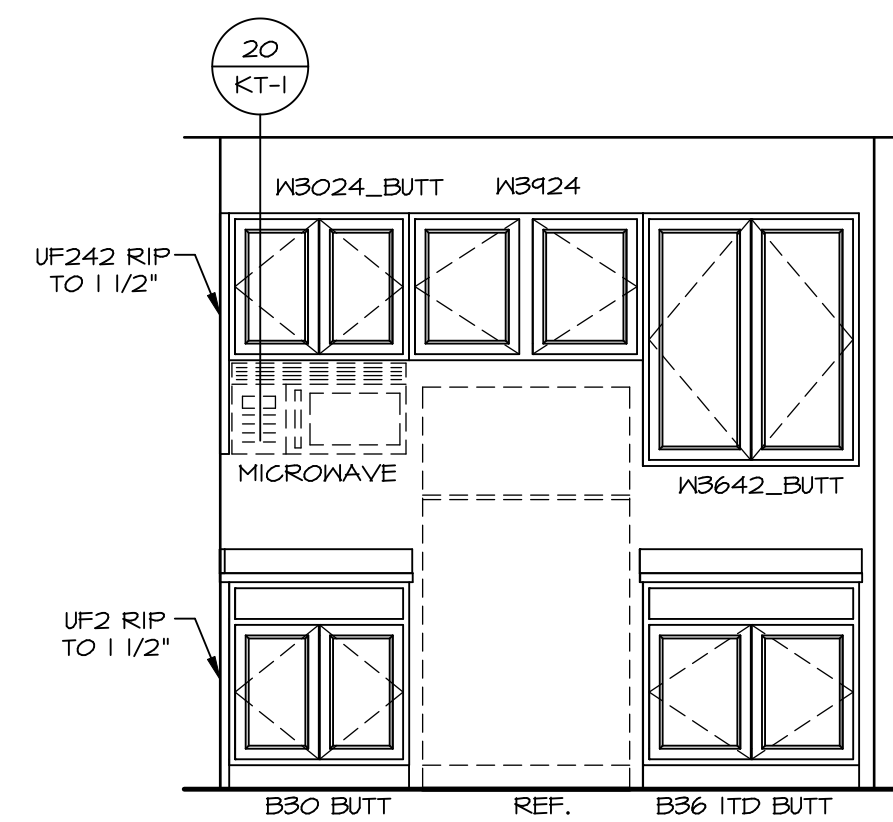
C:\NVR\Solves\LEHIGH_LGH00_01\DCY-CH-S526-1028043\Sheets\Lot_Specific\A-7_PLN1_LS.dwg 11/27/18 - 3:59 am



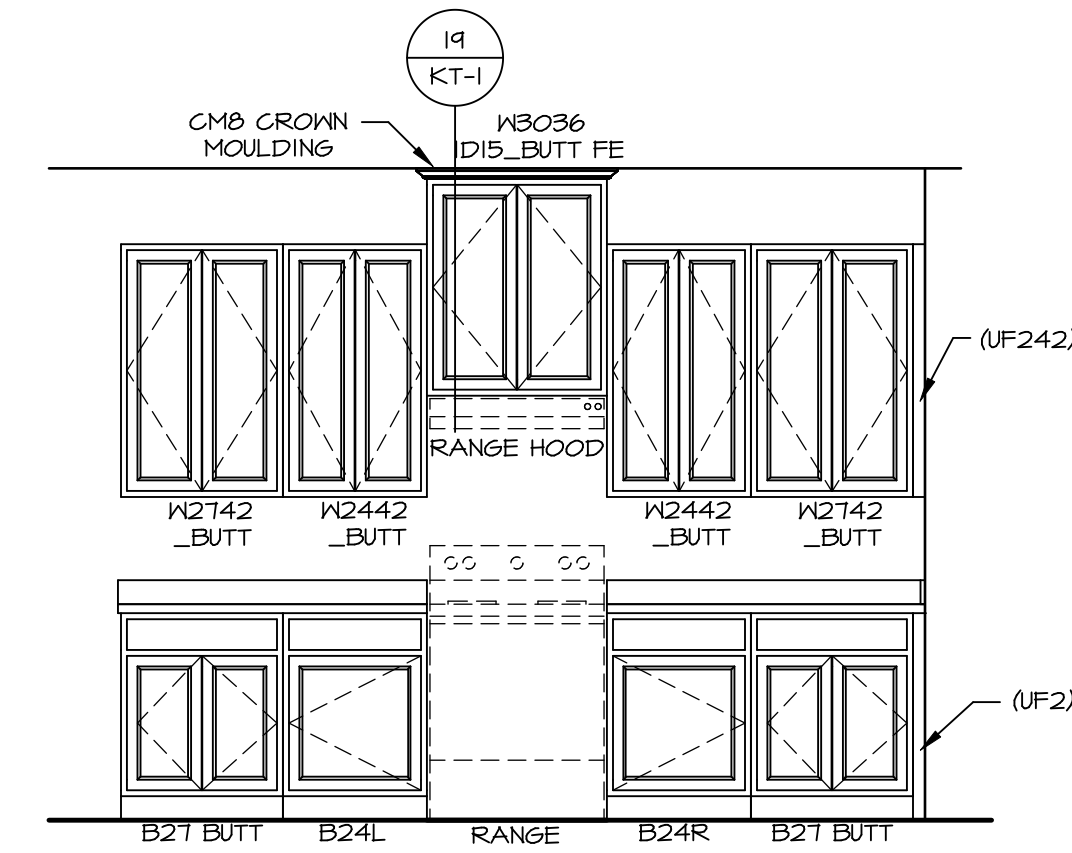
CABINET ELEVATION D
SCALE: 3/8" = 1'-0"



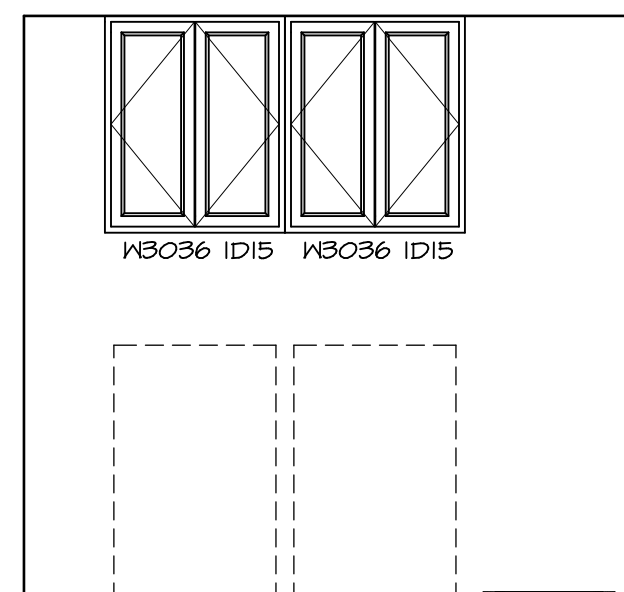
CABINET ELEVATION C
SCALE: 3/8" = 1'-0"



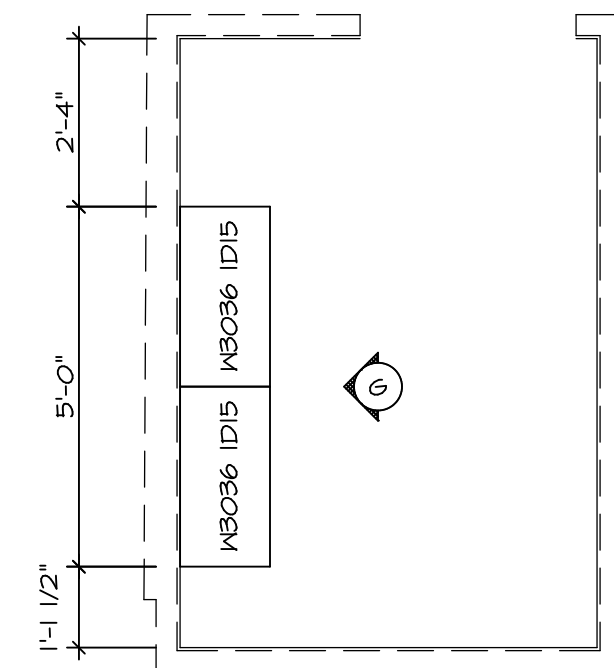
CABINET ELEVATION B
SCALE: 3/8" = 1'-0"



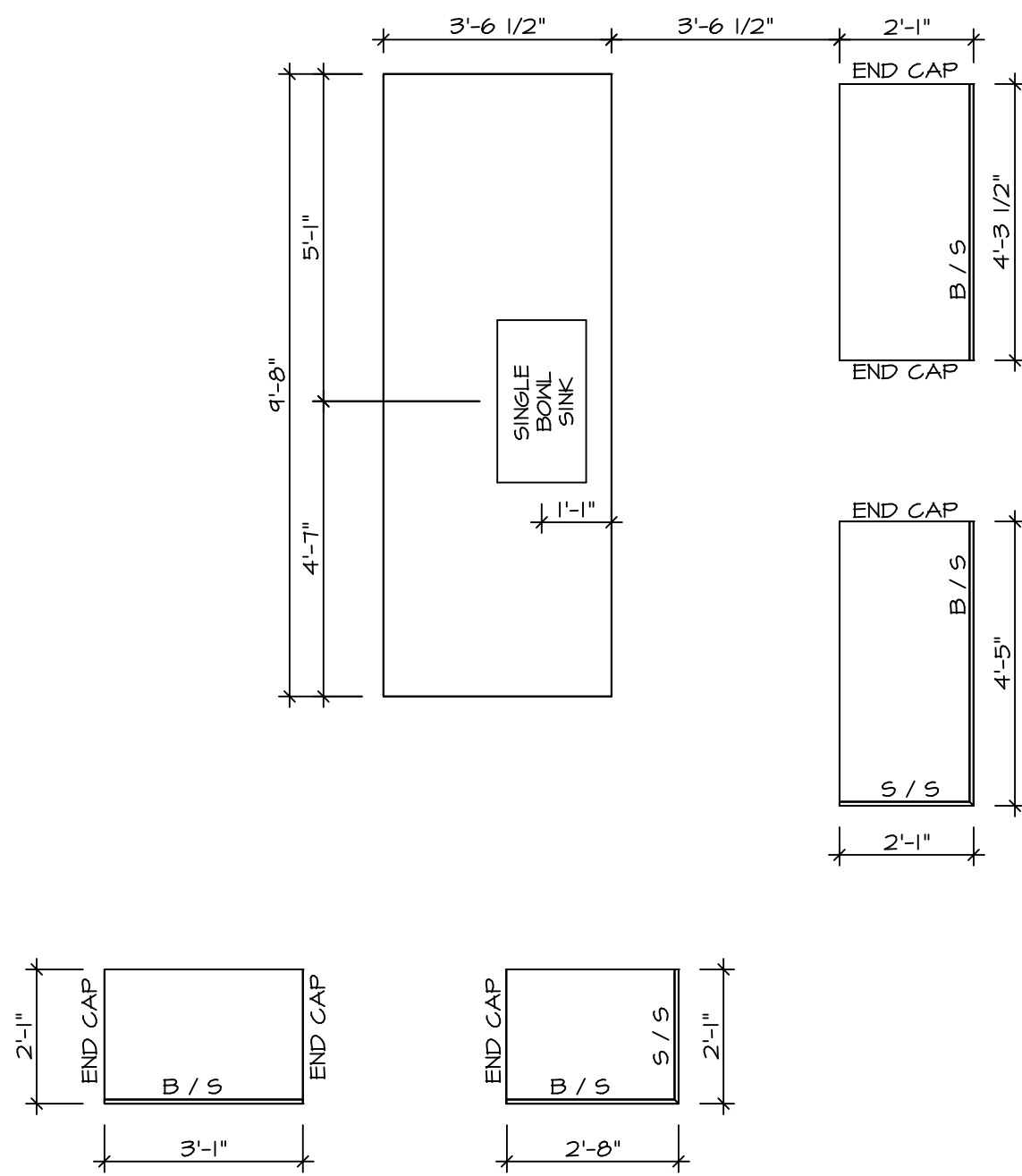
CABINET ELEVATION A
SCALE: 3/8" = 1'-0"



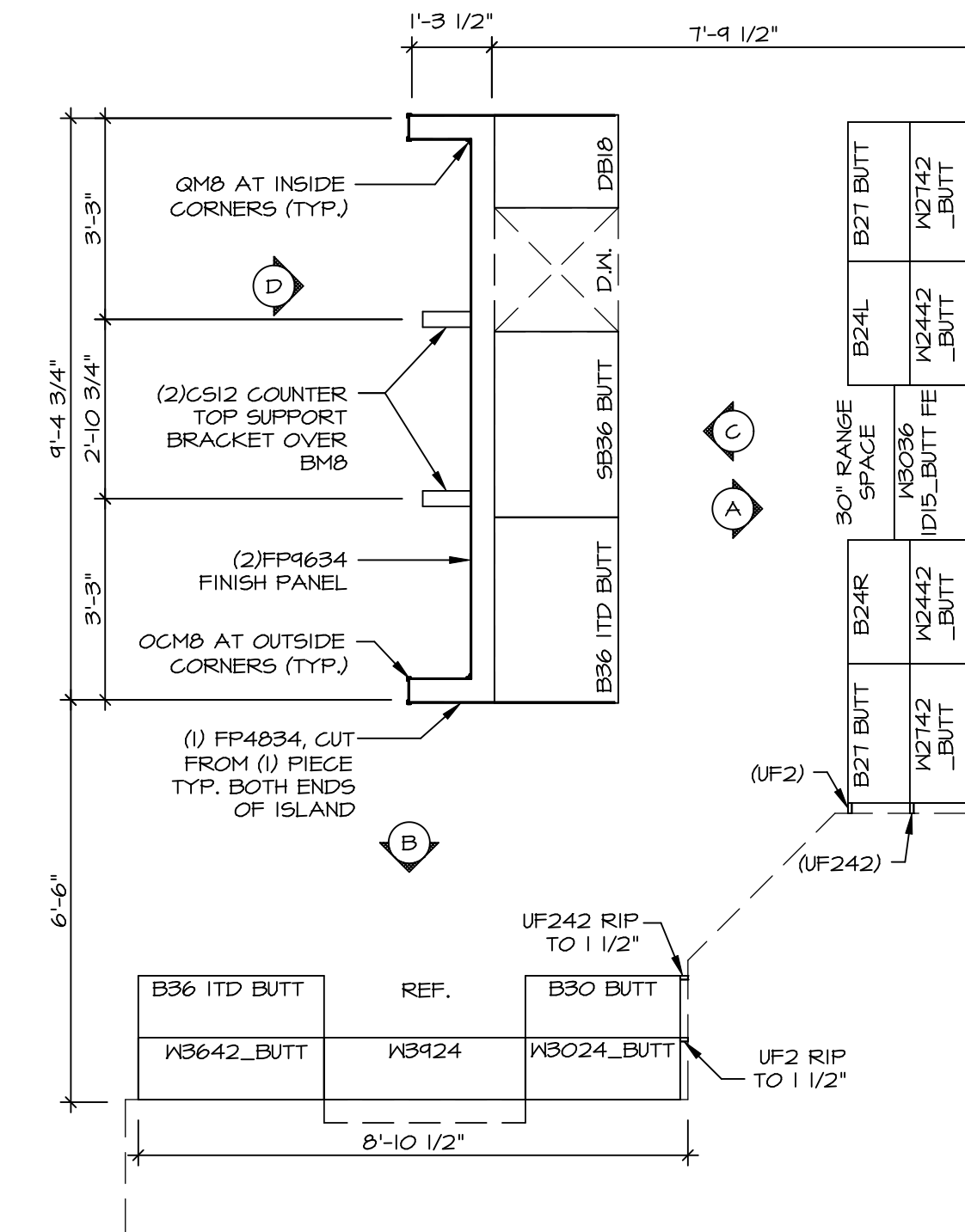
CABINET ELEVATION G
SCALE: 3/8" = 1'-0"



LAUNDRY CABINET PLAN / KC - 3503
SCALE: 3/8" = 1'-0"



COUNTERTOP LAYOUT KC-3501
SCALE: 3/8" = 1'-0"



CABINET LAYOUT KC-3501
SCALE: 3/8" = 1'-0"

NOTE: CABINET LAYOUT(S) ARE BASED ON FINISHED DIMENSION TO DRYWALL.

NOTE: KITCHEN ELEVATIONS/PLANS CALL OUT STANDARD MOLDING. REFER TO DETAIL 11/KT-1 FOR REPLACEMENT BASED ON CABINET STYLE.

| | | | |
|--------------------------|------------------------|---|------------|
| SHEET NO. A-12 | MODEL LEHIGH | SET NO. L6H00 | VERSION 01 |
| | | DRAWING TITLE KITCHEN CABINET PLANS AND ELEVATIONS | DRAWN BY |
| 54 | OPTION DESCRIPTION | DATE: | OPTION |
| | | REMARKS | |

NVR, Inc., owner, expressly reserves its copyright in these plans. These plans are not to be reproduced, changed, copied, or otherwise used in any way without the written consent of NVR, Inc.

