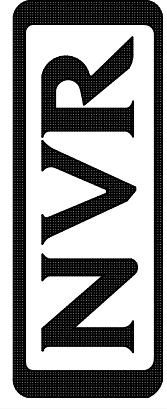


PLUMBING PLAN

SCALE: 1/4" = 1'-0"

SHEET NO. A-5	MODEL NAPLES	SET NO. NAPOO
OPTION DESCRIPTION 28	DRAWING TITLE PLUMBING PLAN	VERSION 06
	DATE 05/22/15	DRAWN BY TN
	OPTION	



NVR, Inc.
Architectural Services
5285 West Lakeshore, Suite 100
Frederick, MD 21703

NVR, Inc., owner, expressly reserves its copyright in these plans. These plans are not to be reproduced, changed, copied, or otherwise used in any way without the prior written consent of NVR, Inc.

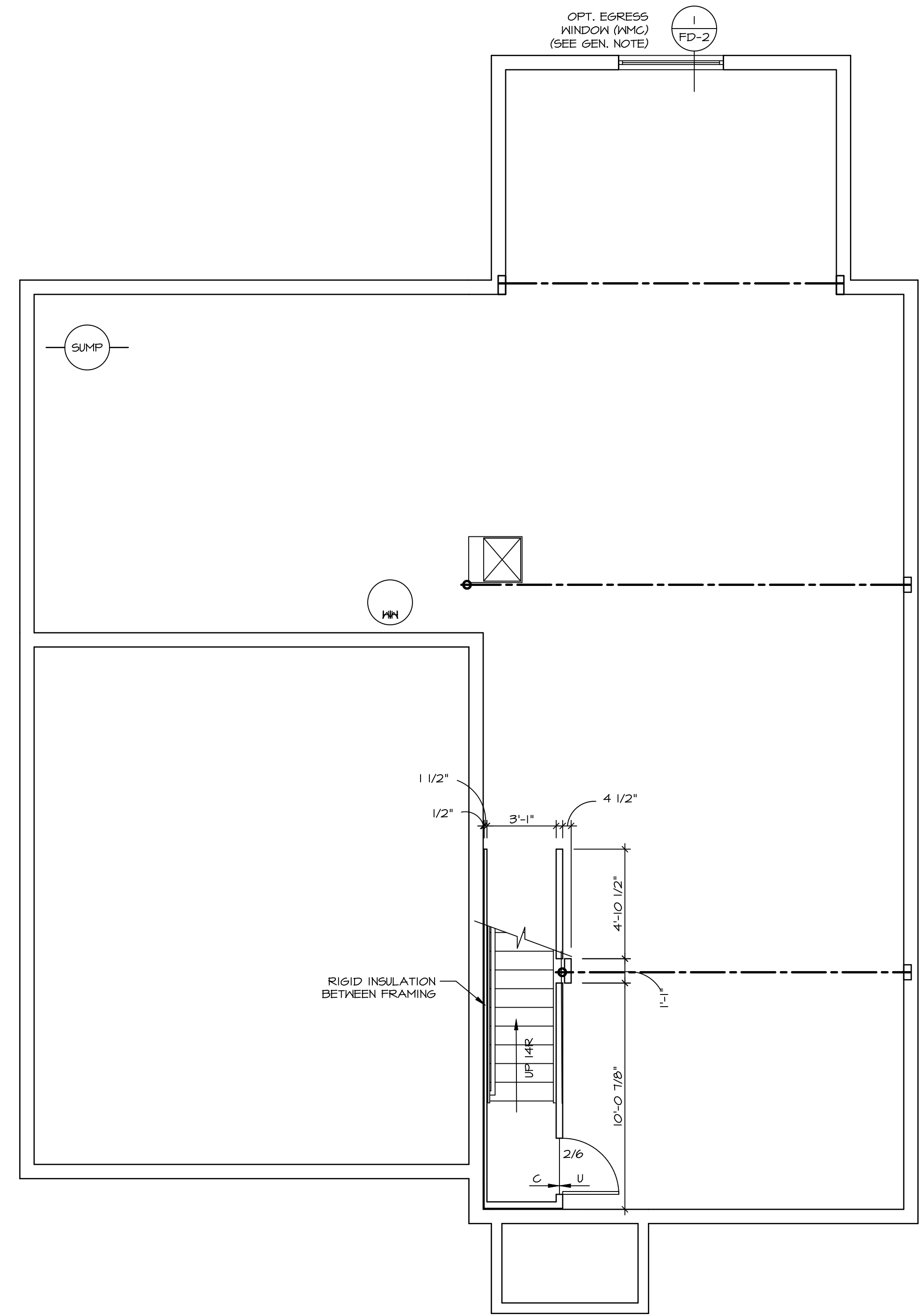
REV. NO. DATE

REMARKS

LEGEND	
	BEARING WALL
	NON BEARING WALL
	INDICATES BEARING FROM POINT-LOAD ABOVE
	JACKS
	BEAM/HEADER
	PAD FOOTING
	STEEL COLUMN
	PORTAL FRAME
	JOIST/TRUSS
	LVL
	ENGINEERING PAGE NUMBER

- FLOOR PLAN NOTES**
1. ALL HEADERS ARE (2) 2x6 w/ 2x4 WALLS OR (3) 2x6 w/ 2x6 WALLS, UNLESS OTHERWISE NOTED.
 2. ALL HEADERS TO HAVE (1) 2x4 OR 2x6 JACK EACH END, UNLESS OTHERWISE NOTED.
 3. ALL EXTERIOR WALLS TO BE 4" AND ALL INTERIOR WALLS TO BE 3 1/2", UNLESS OTHERWISE NOTED.
 4. HATCHED AREAS INDICATE DROPPED CEILING. ALL DROPPED CEILING ARE 12" UNLESS OTHERWISE NOTED.
 5. SEE "BRACED WALL PANEL DETAIL SHEET" FOR SPECIAL WALL FRAMING LOCATIONS AND HEADER SIZES, IF APPLICABLE.
 6. SEE STANDARD DETAIL CATEGORY "IT" SHEET(S) FOR INTERIOR TRIM DETAILS.
 7. SEE ARCHITECTURAL DETAIL SHEET "AD" FOR HOUSE SPECIFIC INTERIOR TRIM OPTION TABLE.
 8. ALL WINDOWS HAVE T-O 1/2" HEADER HEIGHT UNLESS OTHERWISE NOTED.

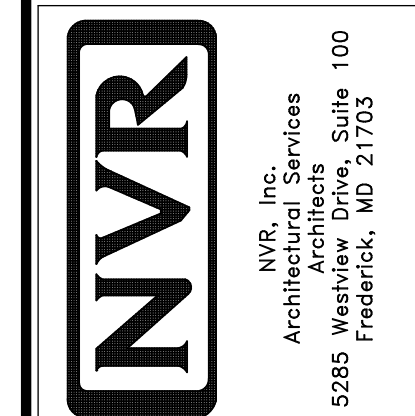
- GYPSUM NOTES**
- AT GARAGE:
GYPSUM BOARD AT COMMON WALLS, CEILING, BEAM WRAPS AND SUPPORTS PER STANDARD DETAIL FA-1(b) FIRE ASSEMBLIES OR AS REQUIRED BY LOCAL CODE.
- AT STAIRS:
1/2" GYPSUM BOARD AT UNDERSIDE OF STAIRS AND WALLS IN CLOSET



BASEMENT FLOOR PLAN
SCALE: 1/4" = 1'-0"

SHEET NO.	MODEL	SET NO.	VERSION	DRAWN BY	DATE	OPTION	REMARKS
A-6	NAPLES BASEMENT FLOOR PLAN	NAPOO	06	TN	05/22/15		
31							

NVR, Inc., owner, expressly reserves its copyright in these plans. These plans are not to be reproduced, changed, copied in any way, or used for any other purpose without the written consent of NVR, Inc.



LEGEND

- BEARING WALL
- NON BEARING WALL
- INDICATES BEARING FROM POINT LOAD ABOVE
- JACKS
- BEAM/HEADER
- PAD FOOTINGS
- STEEL COLUMN
- PORTAL FRAME
- JOIST/TRUSS
- LVL
- ENGINEERING PAGE NUMBER

SEE FG DETAILS FOR FRAMING CONNECTORS

FLOOR PLAN NOTES

1. ALL HEADERS ARE (2) 2x6 w/ 2x4 WALLS OR (3) 2x6 w/ 2x6 WALLS, UNLESS OTHERWISE NOTED.
2. ALL HEADERS TO HAVE (1) 2x4 OR 2x6 JACK AND KING STUD EACH END, UNLESS OTHERWISE NOTED.
3. ALL EXTERIOR WALLS TO BE 4" w/ OSB OR 3 1/2" w/ T-PLY, ALL INTERIOR WALLS TO BE 3 1/2", UNLESS OTHERWISE NOTED.
4. HATCHED AREAS INDICATE DROPPED CEILING. ALL DROPPED CEILING ARE 12" UNLESS OTHERWISE NOTED.
5. SEE "BRACED WALL PANEL DETAIL SHEET" FOR SPECIAL WALL FRAMING LOCATIONS AND HEADER SIZES, IF APPLICABLE.
6. SEE STANDARD DETAIL CATEGORY "IT" SHEET(S) FOR INTERIOR TRIM DETAILS.
7. SEE ARCHITECTURAL DETAIL SHEET "AD" FOR HOUSE SPECIFIC INTERIOR TRIM OPTION TABLE.
8. ALL WINDOWS HAVE 7'-0 1/2" HEADER HEIGHT UNLESS OTHERWISE NOTED.
9. ALL HEADERS IN NON-BEARING WALLS SHALL BE A SINGLE FLAT 2x4 OR 2x6 ATTACHED TO GRIFFLES ABOVE, UNLESS OTHERWISE NOTED.

GYPSUM NOTES

AT GARAGE:
 GYPSUM BOARD AT COMMON WALLS, CEILING, BEAM WRAPS AND SUPPORTS PER STANDARD DETAIL FA-(b) FIRE ASSEMBLIES OR AS REQUIRED BY LOCAL CODE.

AT STAIRS:
 1/2" GYPSUM BOARD AT UNDERSIDE OF STAIRS AND WALLS IN CLOSET

LVL PLY TO PLY FASTENING SCHEDULE:

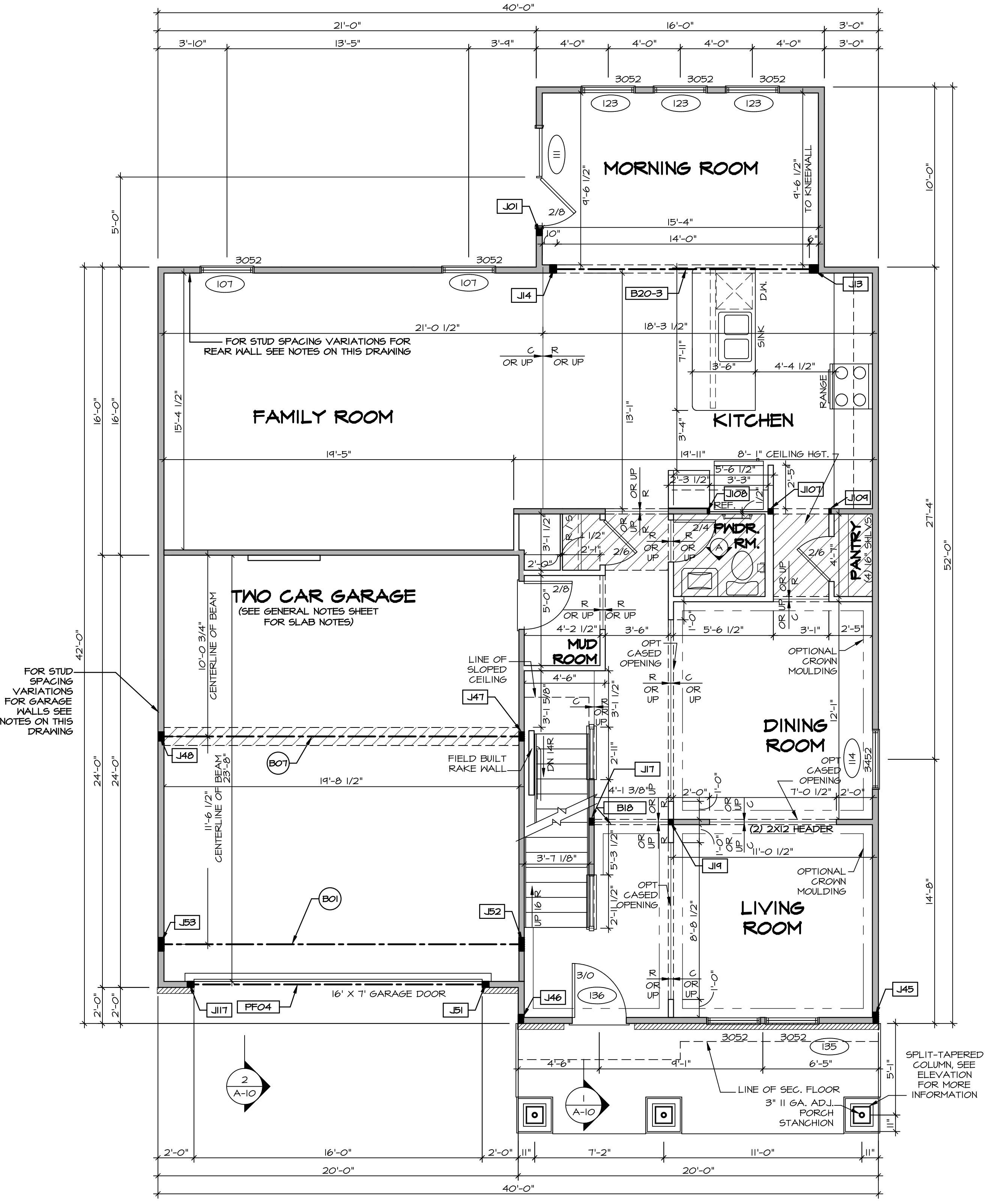
- 1.A - (2) PLY UP TO AND INCLUDING 11 7/8" TALL; FASTEN PLYS W/ (2) ROWS 16D NAILS AT 12" O.C.
- 2.A - (2) PLY 14" TO AND 18" TALL (INCLUSIVE); FASTEN PLYS W/ (3) ROWS 16D NAILS AT 12" O.C.
- 3.A - (2) PLY 20" TALL AND OVER; FASTEN PLYS W/ (4) ROWS 16D NAILS AT 12" O.C.
- 4.A - (3) PLY UP TO AND INCLUDING 11 7/8" TALL; FASTEN PLYS W/ (2) ROWS 16D NAILS AT 12" O.C. FROM EACH SIDE
- 5.A - (3) PLY 14" TO AND 18" TALL (INCLUSIVE); FASTEN PLYS W/ (3) ROWS 16D NAILS AT 12" O.C. FROM EACH SIDE
- 6.A - (3) PLY 20" TALL AND OVER; FASTEN PLYS W/ (4) ROWS 16D NAILS AT 12" O.C. FROM EACH SIDE

FIRST FLOOR BEAM/HEADER SCHEDULE

IDENTIFIER	DESCRIPTION	LENGTH	OPTIONS	ENG. NUM.	REMARKS
B01	BEAM STEEL - W12X30	20'-3"	ZCC, ZSX, ELB, ELC, ELL, ELN, GCB	143	
B07	BEAM STEEL - W12X14	20'-3"	GCB	103	
B18	INT HEADER - 2X8 - 2 PLY	4'-7 1/2"		100	FIELD INSTALLED
B20-3	LVL - 16	14'-11"	MAA, ZCC	124	5.A
PFO4	EXT HEADER - 2X12 - 2 PLY	14'-4"	GCB, ELB, ELC, ELL, ELN	120	PORTAL FRAME

FIRST FLOOR JACK SCHEDULE

IDENTIFIER	DESCRIPTION	OPTIONS	ENG. NUM.	REMARKS
J01	JACK - (3) 2X4 SPF STUD GRADE	SRM, SGK	112	FULL HEIGHT STUDS
J107	JACK - (2) 2X4 SPF STUD GRADE	ZCC	167	
J108	JACK - 2X4 SPF STUD GRADE		150, 167	
J109	JACK - 2X4 SPF STUD GRADE		150, 167	
J117	JACK - (3) 2X4 SPF STUD GRADE	GCB	120	
J13	JACK - (4) 2X6 SPF STUD GRADE	ZCC, MAA	124	
J14	JACK - (3) 2X6 SPF STUD GRADE	ZCC, MAA	124	
J17	JACK - (3) 2X4 SPF STUD GRADE	ZCC, FBA		
J14	JACK - (2) 2X4 SPF STUD GRADE	MBL		
J45	JACK - (3) 2X4 SPF	ELN	206	
J46	JACK - (4) 2X4 SPF	ELN	206	
J47	JACK - (4) 2X4 SPF STUD GRADE	GCB		
J48	JACK - (4) 2X4 SPF STUD GRADE	GCB		
J51	JACK - (3) 2X4 SPF STUD GRADE	GCB	120	
J52	JACK - (6) 2X4 SPF	GCB, ELB, ELC, ELL, ELN	119	
J53	JACK - (6) 2X4 SPF	SRM, SGK, SRI, SXS, GCB	142, 143	



FIRST FLOOR PLAN
 SCALE: 1/4" = 1'-0"

STEEL COLUMN SCHEDULE

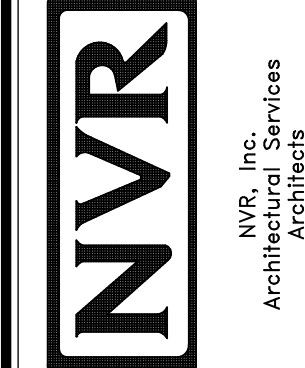
IDENTIFIER	STYLE	HEIGHT	OPTIONS	ENG. NUM.	REMARKS

- STUD SPACING FOR FRONT WALLS AT LIVING ROOM:**
- 115 NO ATTIC "BTU/MAU", 2x4 STUD WALLS AT 16" O.C.
 - 157 W ATTIC "BTU/MAU", 2x4 STUD WALLS AT 12" O.C.
- STUD SPACING FOR FRONT WALLS AT FOYER:**
- 116 2x4 STUD WALLS AT 12" O.C.
 - 157 2x4 STUD WALLS AT 12" O.C.
- STUD SPACING FOR FRONT / SIDE WALLS AT GARAGE:**
- 125 W 40 MPH "SRM" OR 100 MPH "SQK", 2x4 STUD WALLS AT 16" O.C. OR
 - 125 W 110 MPH "SQL" OR 120 MPH "SRX", 2x4 STUD WALLS AT 12" O.C.
- STUD SPACING FOR REAR WALLS AT DINETTE/ KITCHEN:**
- 117 W CORPORATE TRUSS SPECS, "SRI" OR SOUTHEAST SPECS, "SXS" WITHOUT ATTIC, 2x4 STUD WALLS AT 16" O.C. OR
 - 117 W NORTHEAST TRUSS SPECS, "SRJ" WITHOUT ATTIC, 2x4 STUD WALLS AT 12" O.C. OR
 - 158 W ATTIC "BTU/MAU", 2x4 STUD WALLS AT 12" O.C.
- STUD SPACING FOR REAR WALLS AT FAMILY ROOM:**
- 117 NO ATTIC "BTU/MAU", 2x4 STUD WALLS AT 16" O.C. OR
 - 158 W ATTIC "BTU/MAU", 2x4 STUD WALLS AT 12" O.C.

REV. NO. DATE

1	08/01/16	NL - DRAWING ALIGNMENT
2	07/12/17	SLS - T-PLY CONVERSION PROJECT

NVR, Inc., owner, expressly reserves its copyright in these plans. These plans are not to be reproduced, changed, copied, or otherwise used in any way without the written consent of NVR, Inc.



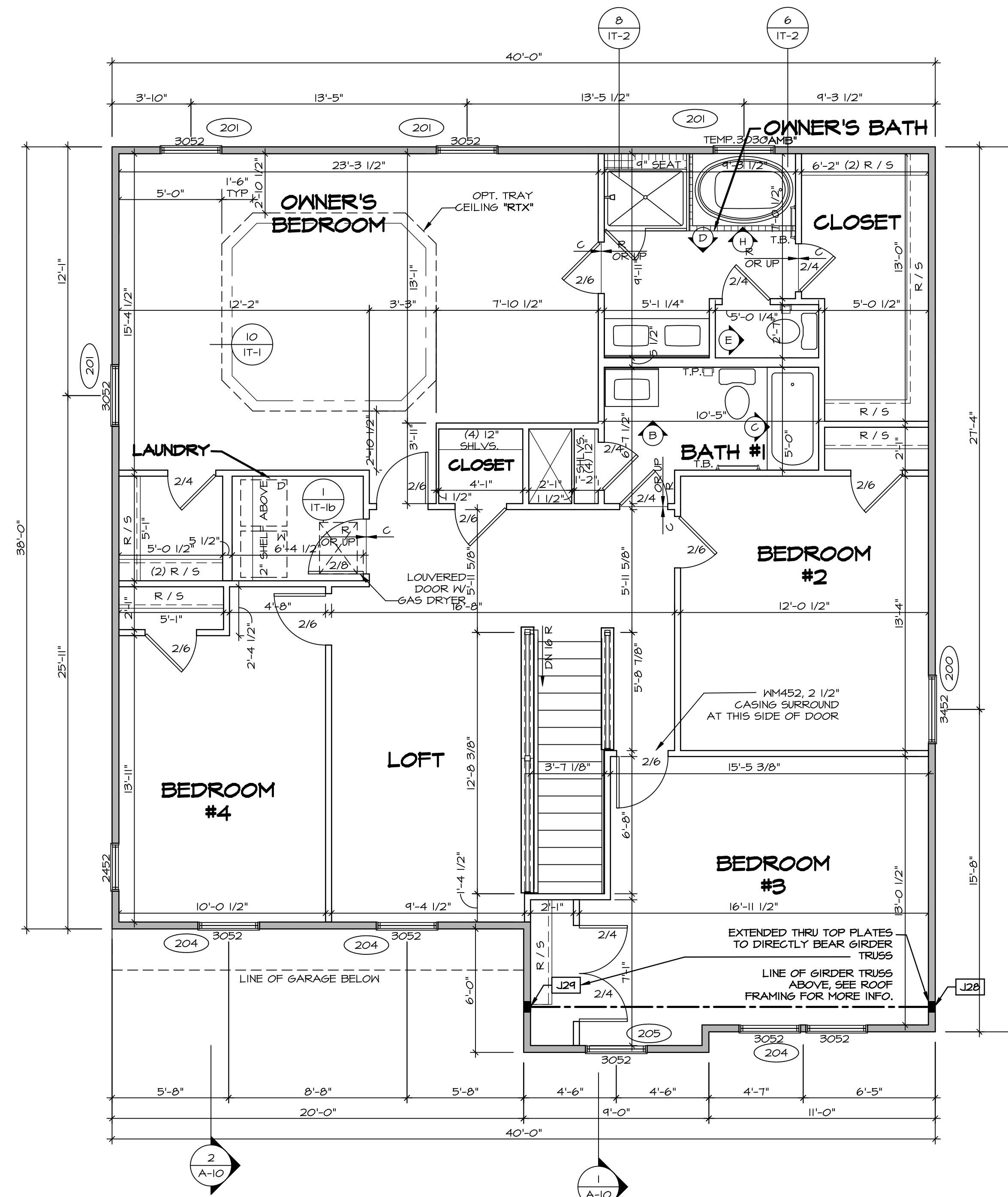
SET NO. NAPOO

VERSION	06
DRAWN BY	TN
DATE	05/22/15
OPTION	

MODEL
NAPILES
DRAWING TITLE
FIRST FLOOR PLAN

SHEET NO.
A-7

OPTION DESCRIPTION
32



1
A-B **SECOND FLOOR PLAN**
SCALE: 1/4" = 1'-0"

LEGEND

- BEARING WALL
- NON BEARING WALL
- INDICATES BEARING FROM POINT-LOAD ABOVE
- JACKS
- BEAM/HEADER
- PAD FOOTING
- STEEL COLUMN
- PORTAL FRAME
- JOIST/TRUSS
- LVL
- ENGINEERING PAGE NUMBER

SEE FC DETAILS FOR FRAMING CONNECTORS

- FLOOR PLAN NOTES**
1. ALL HEADERS ARE (2) 2x6 w/ 2x4 WALLS OR (3) 2x6 w/ 2x6 WALLS, UNLESS OTHERWISE NOTED.
 2. ALL HEADERS TO HAVE (1) 2x4 OR 2x6 JACK AND KING STUD EACH END, UNLESS OTHERWISE NOTED.
 3. ALL EXTERIOR WALLS TO BE 4" w/ OSB OR 3 1/2" w/ T-PLY, ALL INTERIOR WALLS TO BE 3 1/2", UNLESS OTHERWISE NOTED.
 4. HATCHED AREAS INDICATE DROPPED CEILINGS. ALL DROPPED CEILINGS ARE 12" UNLESS OTHERWISE NOTED.
 5. SEE "BRACED WALL PANEL DETAIL SHEET" FOR SPECIAL WALL FRAMING LOCATIONS AND HEADER SIZES, IF APPLICABLE.
 6. SEE STANDARD DETAIL CATEGORY "11" SHEET(S) FOR INTERIOR TRIM DETAILS.
 7. SEE ARCHITECTURAL DETAIL SHEET "AD" FOR HOUSE SPECIFIC INTERIOR TRIM OPTION TABLE.
 8. ALL WINDOWS HAVE "T-O 1/2" HEADER HEIGHT UNLESS OTHERWISE NOTED.
 9. ALL HEADERS IN NON-BEARING WALLS SHALL BE A SINGLE FLAT 2x4 OR 2x6 ATTACHED TO CRIPPLES ABOVE, UNLESS OTHERWISE NOTED.

SECOND FLOOR JACK SCHEDULE

IDENTIFIER	DESCRIPTION	OPTIONS	ENG. NUM.	REMARKS
J20	JACK - (4) 2X4 SP#1	ELN	206	
J24	JACK - (4) 2X4 SP#1	ELN	206	

- LVL PLY TO PLY FASTENING SCHEDULE:**
- 1A - (2) FLY UP TO AND INCLUDING 11 7/8" TALL; FASTEN PLYS W/ (2) ROWS 16D NAILS AT 12" O.C.
 - 2A - (2) PLY 14" TO AND 18" TALL (INCLUSIVE); FASTEN PLYS W/ (3) ROWS 16D NAILS AT 12" O.C.
 - 3A - (2) PLY 20" TALL AND OVER; FASTEN PLYS W/ (4) ROWS 16D NAILS AT 12" O.C.
 - 4A - (3) PLY UP TO AND INCLUDING 11 7/8" TALL; FASTEN PLYS W/ (2) ROWS 16D NAILS AT 12" O.C. FROM EACH SIDE
 - 5A - (3) PLY 14" TO AND 18" TALL (INCLUSIVE); FASTEN PLYS W/ (3) ROWS 16D NAILS AT 12" O.C. FROM EACH SIDE
 - 6A - (3) PLY 20" TALL AND OVER; FASTEN PLYS W/ (4) ROWS 16D NAILS AT 12" O.C. FROM EACH SIDE

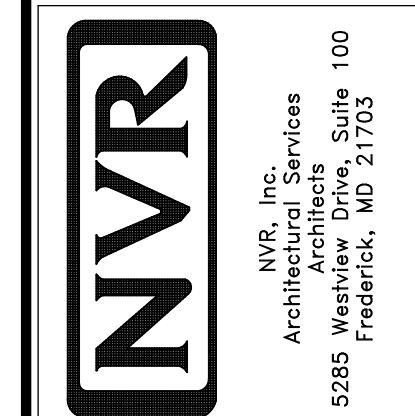
SECOND FLOOR BEAM/HEADER SCHEDULE

IDENTIFIER	DESCRIPTION	LENGTH	OPTIONS	ENG. NUM.	REMARKS
------------	-------------	--------	---------	-----------	---------

REMARKS

REV. NO.	DATE	DESCRIPTION
1	08/01/16	N.L. - DRAWING ALIGNMENT
2	07/12/17	5/15 - T-PLY CONVERSION PROJECT

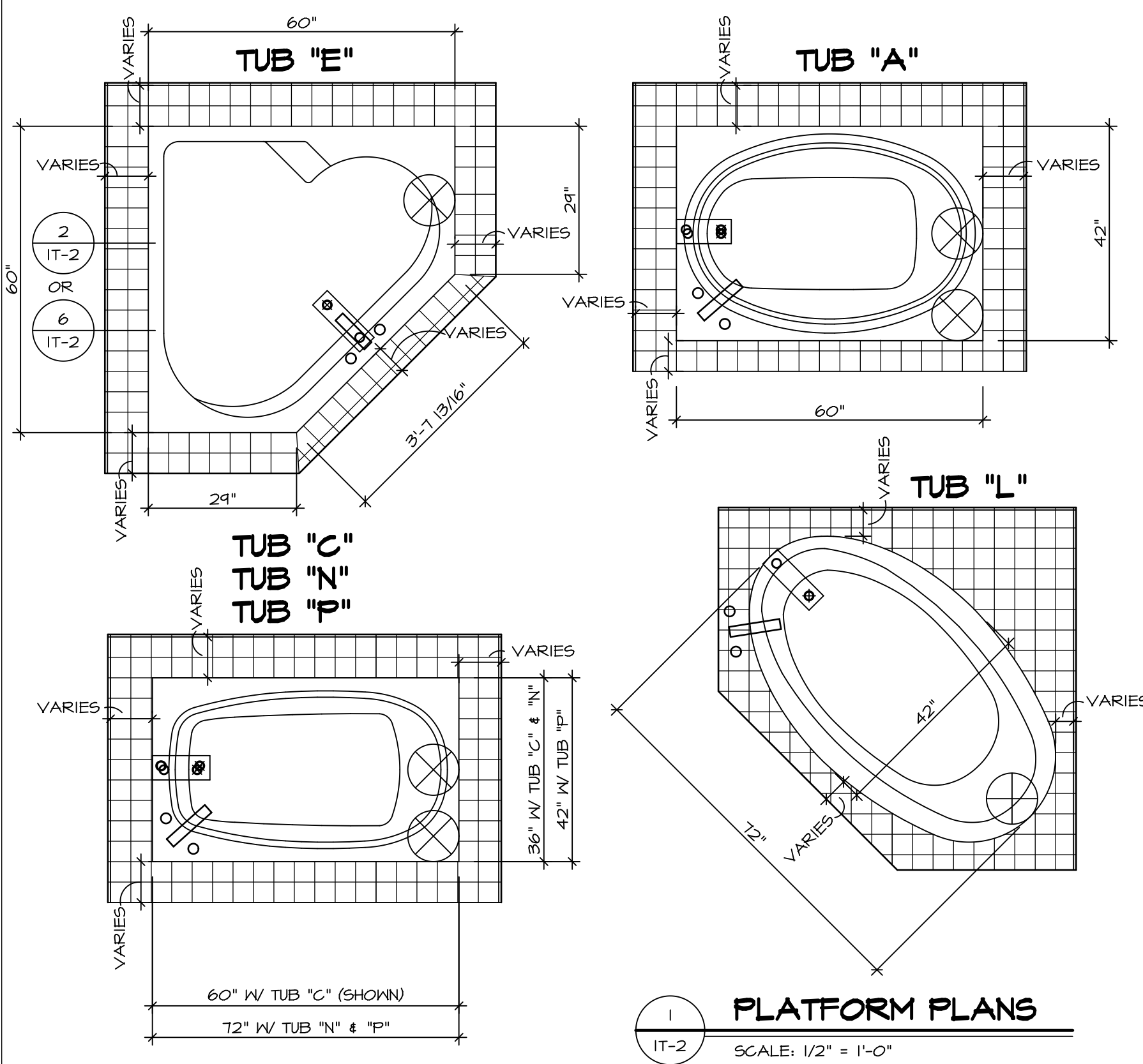
NVR, Inc., owner, expressly reserves its copyright in these plans. These plans are not to be reproduced, changed, copied, or otherwise used in any way without the prior written consent of NVR, Inc.



SET NO. NAPOO
VERSION 06
DRAWN BY TN
DATE: 05/22/15
OPTION

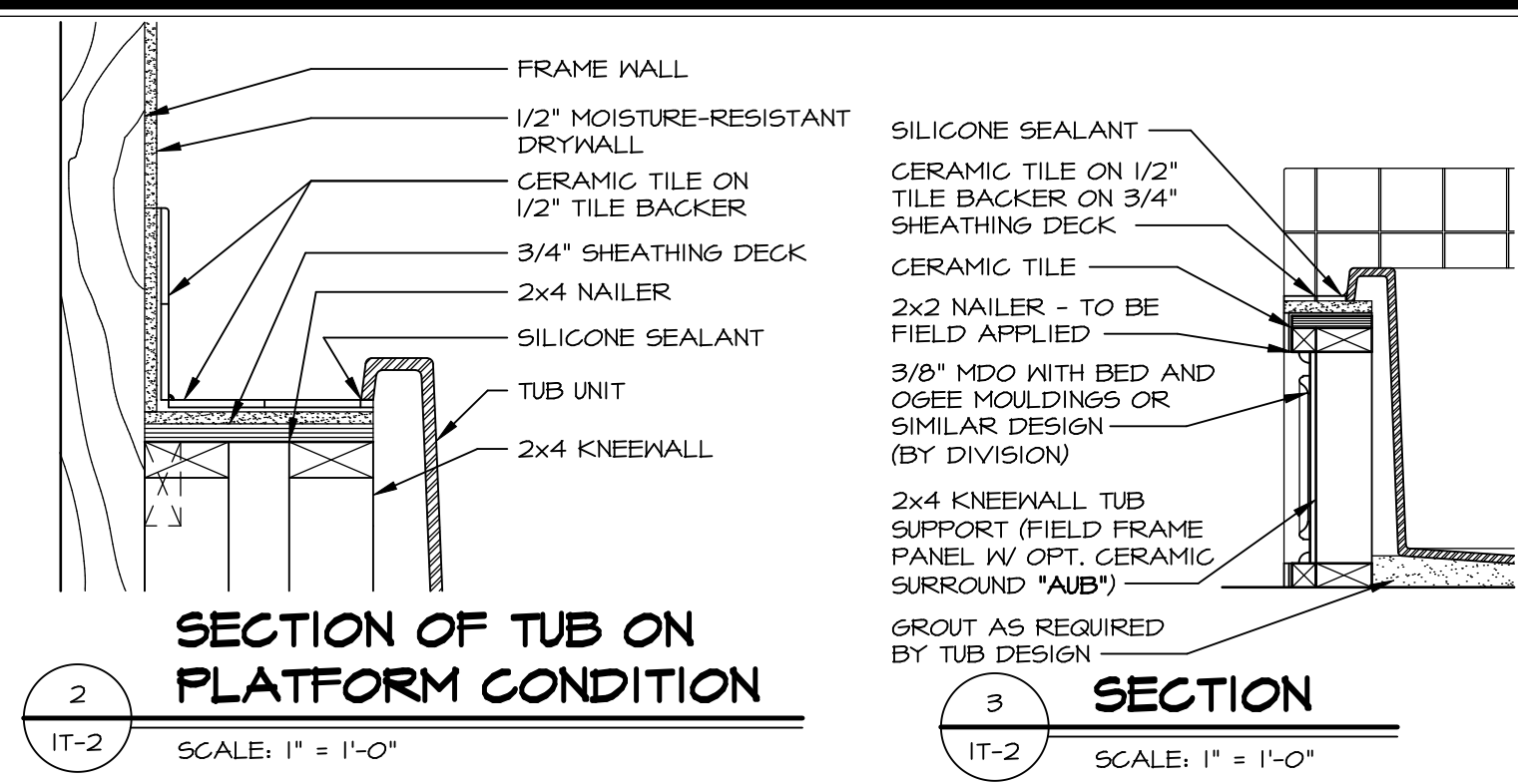
MODEL
NAPLES
DRAWING TITLE
SECOND FLOOR PLAN
OPTION DESCRIPTION

SHEET NO.
A-8
36

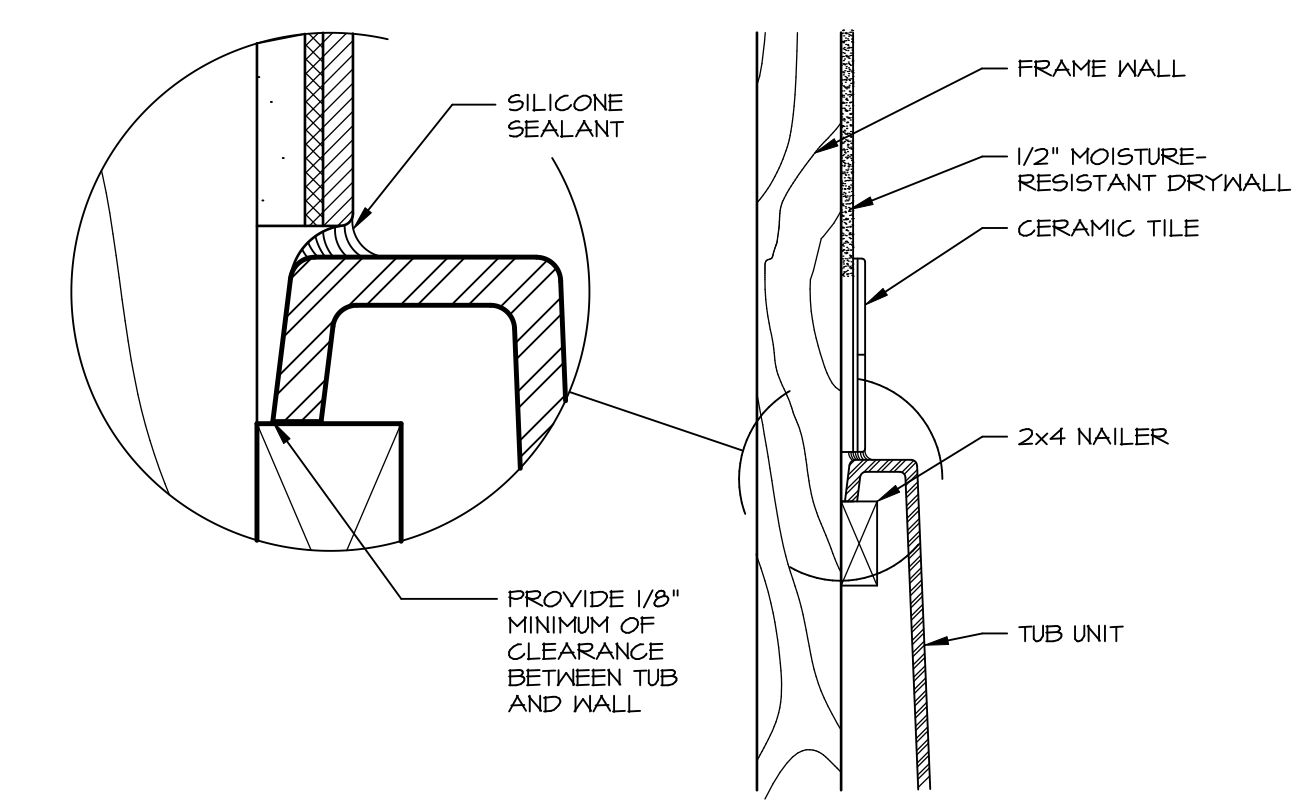


1 PLATFORM PLANS
SCALE: 1/2" = 1'-0"

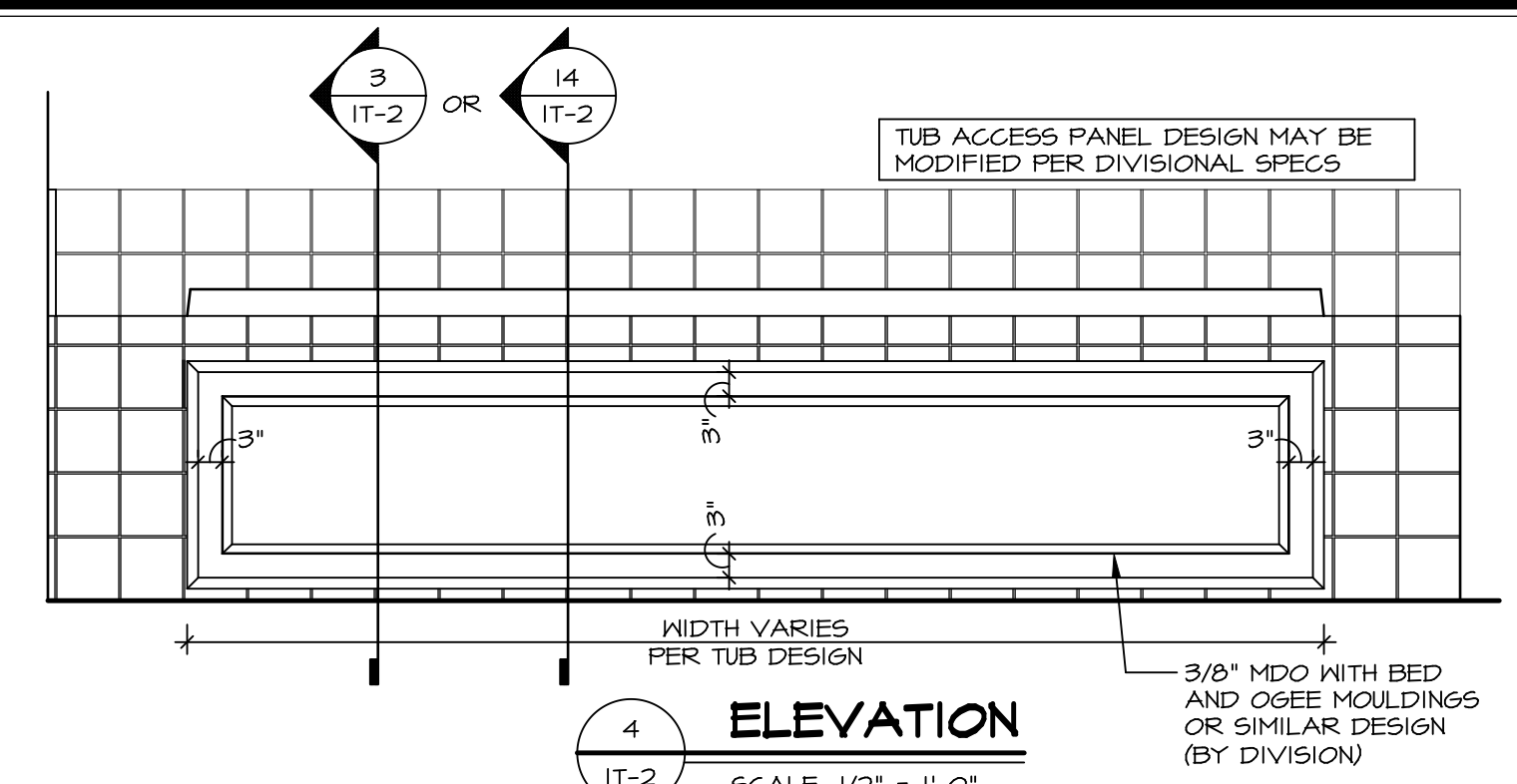
TUB	MANUF.	HEIGHT	WIDTH	LENGTH	TUB DECK PANEL HEIGHT
"A"	KOHLER/STERLING	18 3/4"	42"	60"	17 1/8"
"C"	KOHLER/STERLING	18 3/4"	36"	60"	17 1/8"
"E"	KOHLER/STERLING	19 1/2"	60"	60"	17 7/8"
"L"	KOHLER/STERLING	18 1/2"	42"	72"	16 7/8"
"N"	KOHLER/STERLING	18 3/4"	36"	72"	17 1/8"
"P"	KOHLER/STERLING	18 3/4"	42"	72"	17 1/8"



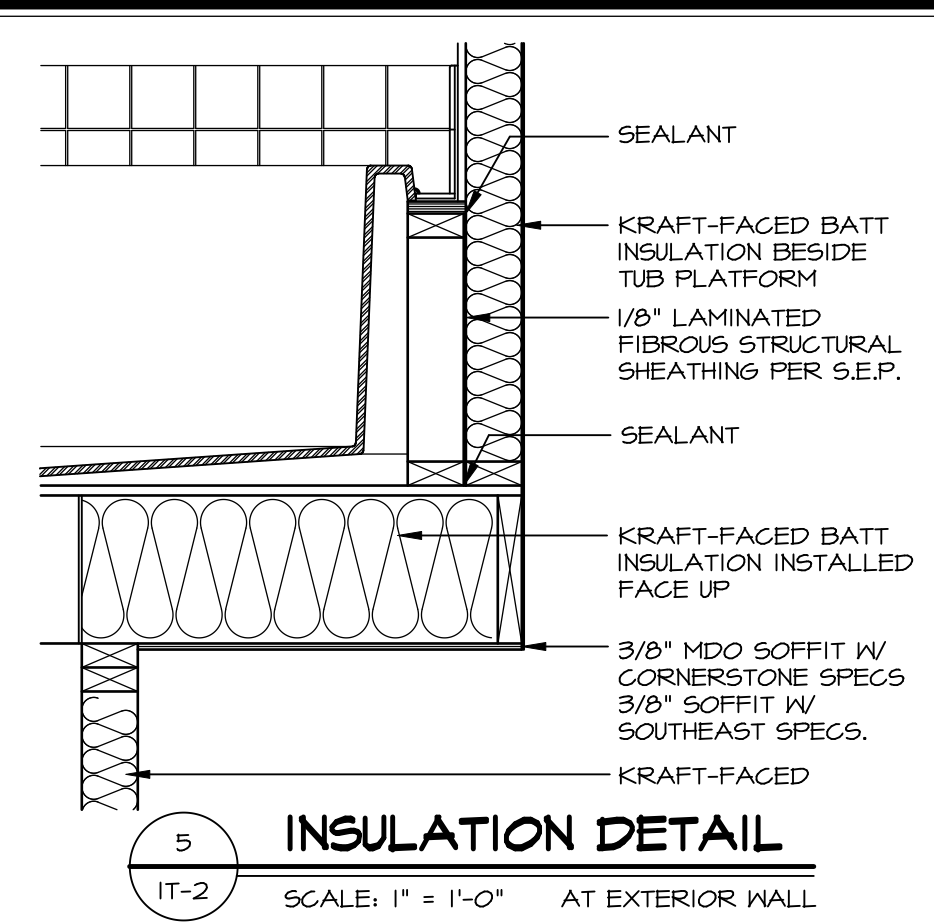
2 SECTION OF TUB ON PLATFORM CONDITION
SCALE: 1" = 1'-0"



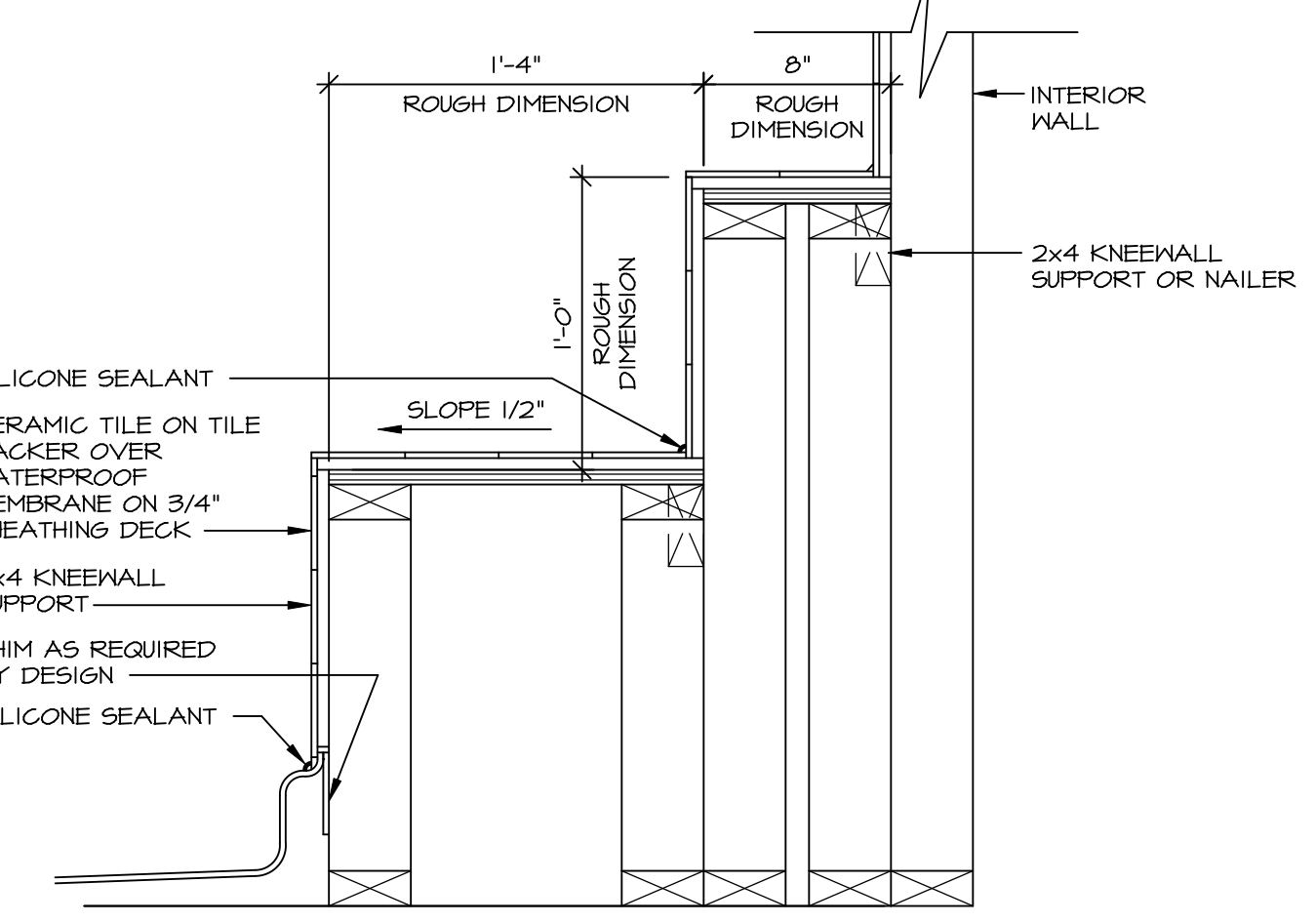
3 SECTION OF TUB TO WALL CONDITION
SCALE: 1" = 1'-0"



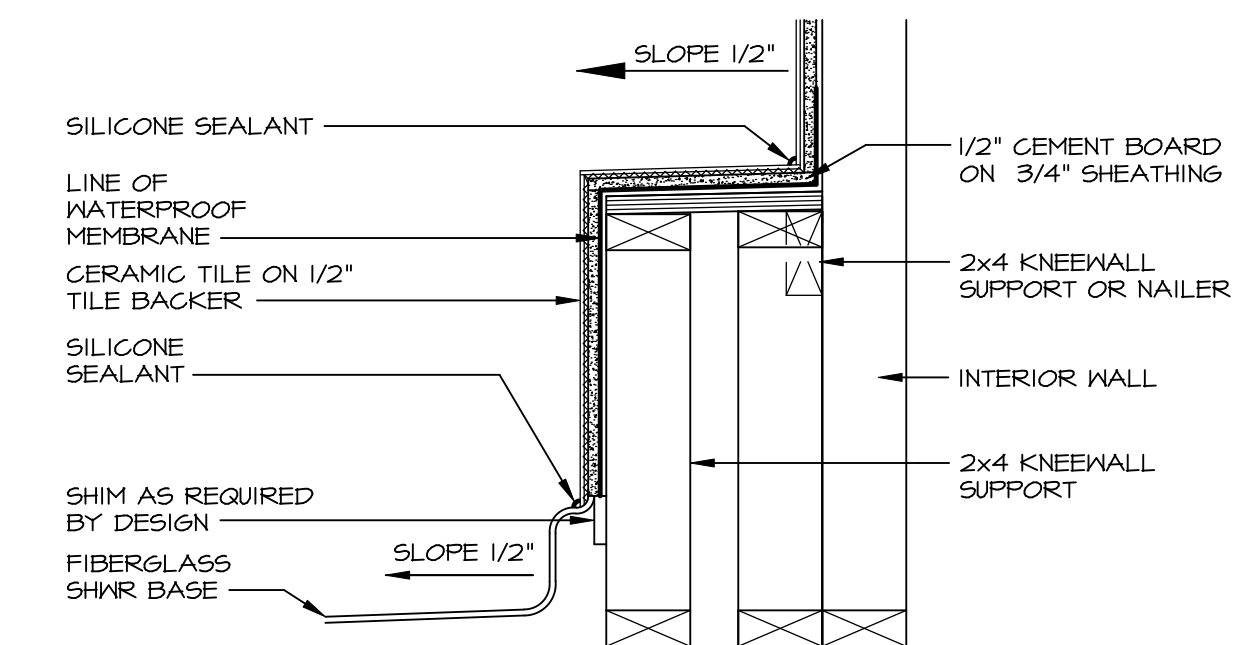
4 ELEVATION
SCALE: 1/2" = 1'-0"



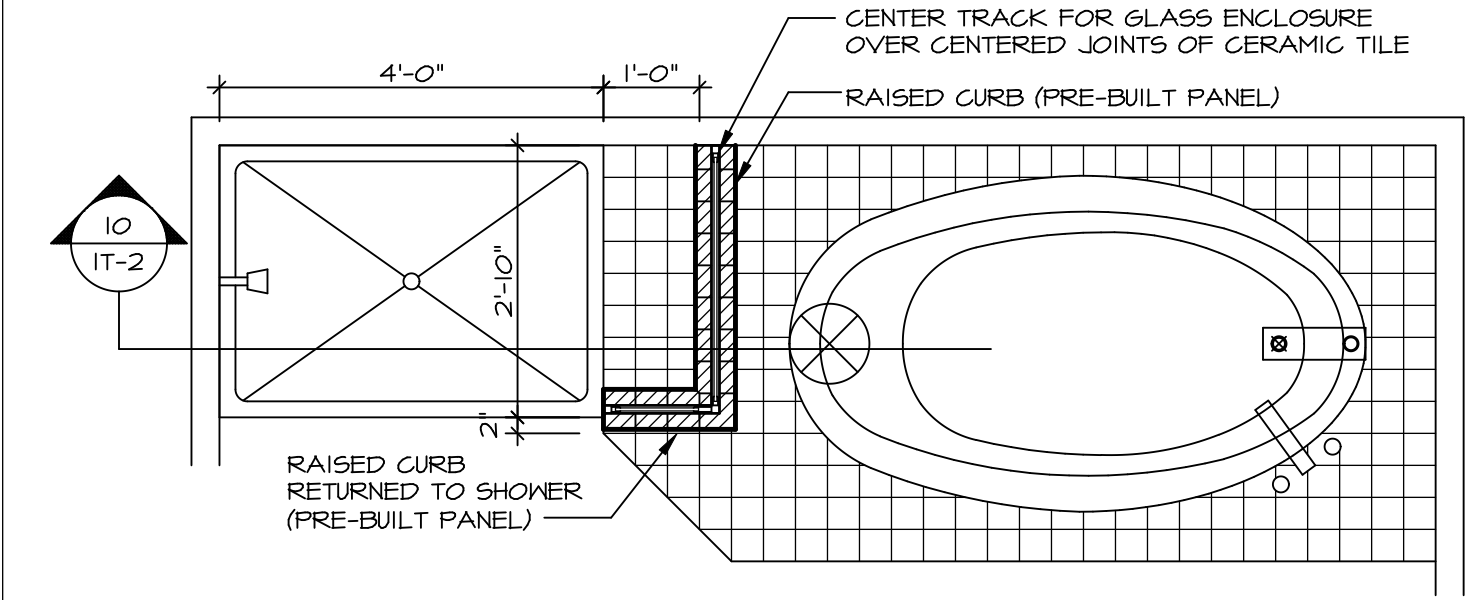
5 INSULATION DETAIL
SCALE: 1" = 1'-0" AT EXTERIOR WALL



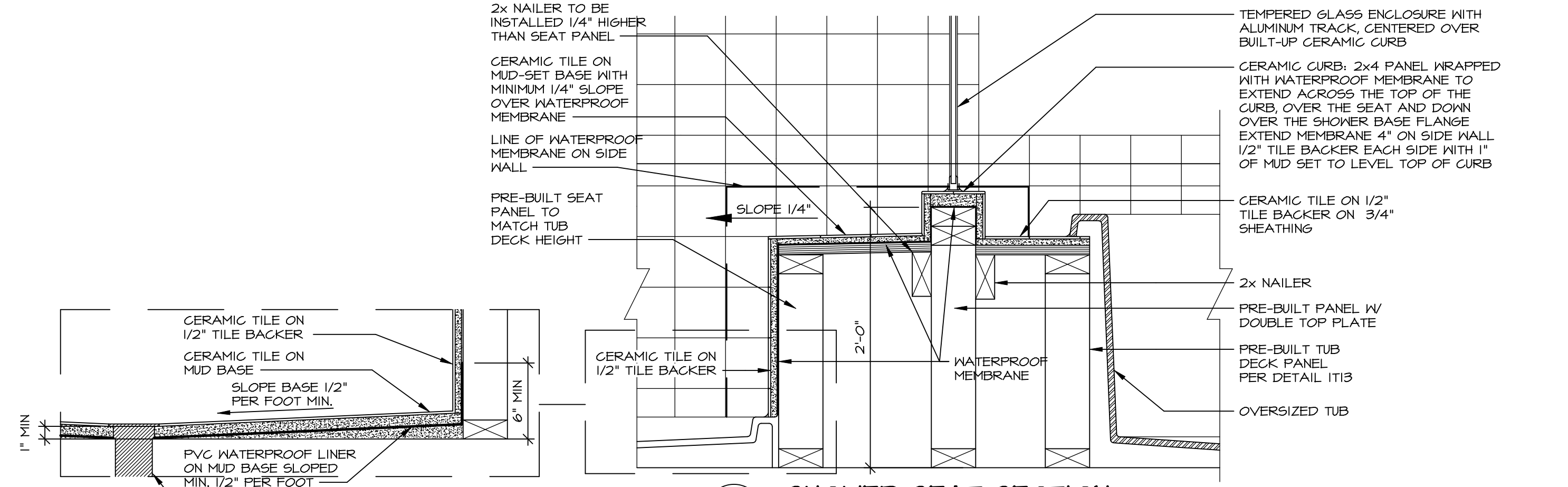
7 SECTION OF SHOWER SEAT AND SHELF
SCALE: 1 1/2" = 1'-0"



8 SECTION OF SHOWER SEAT
SCALE: 1-1/2" = 1'-0" FIBERGLASS SHOWER BASE



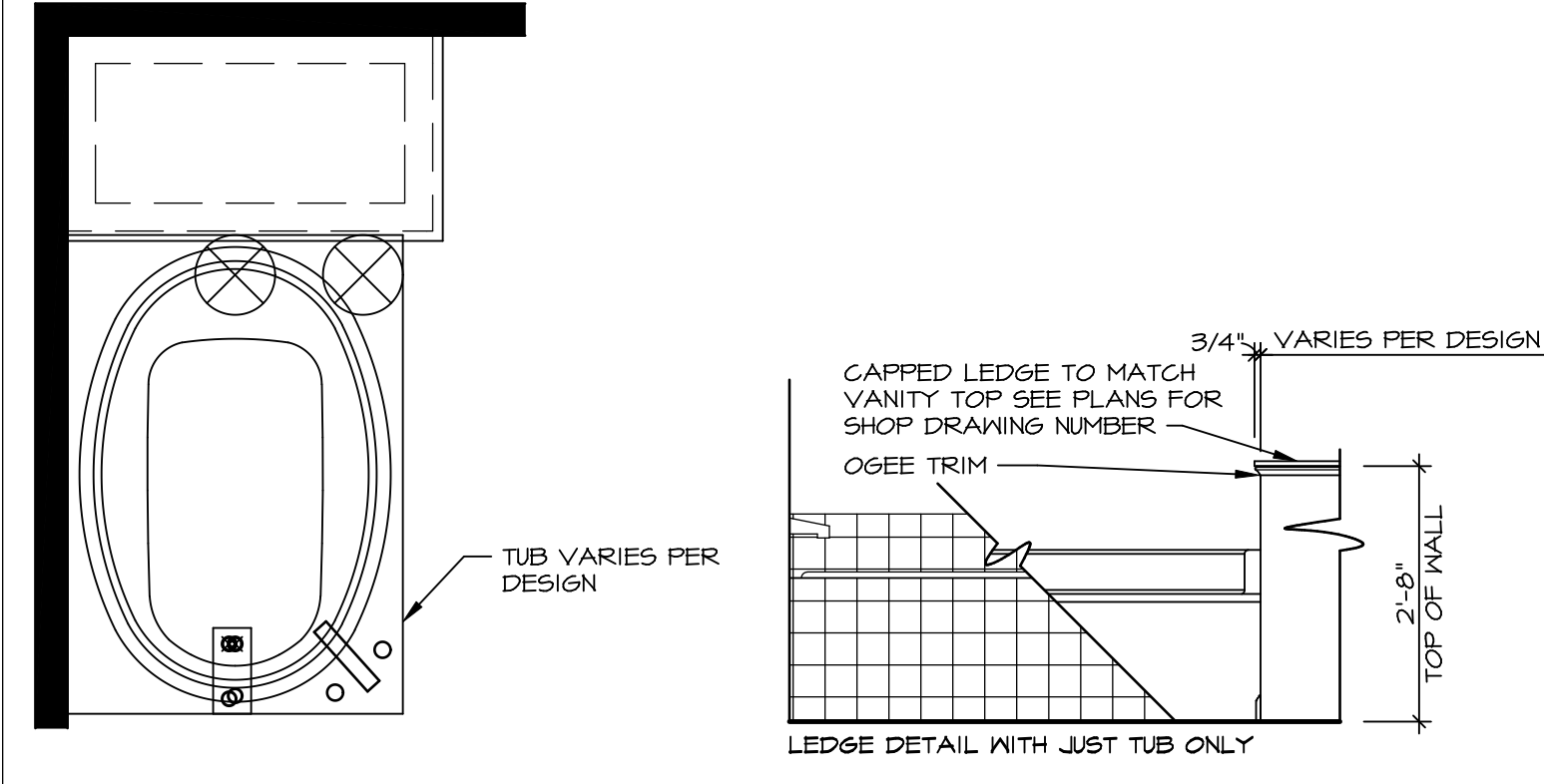
9 SHOWER SEAT PLAN / DETAIL
SCALE: 1/2" = 1'-0"



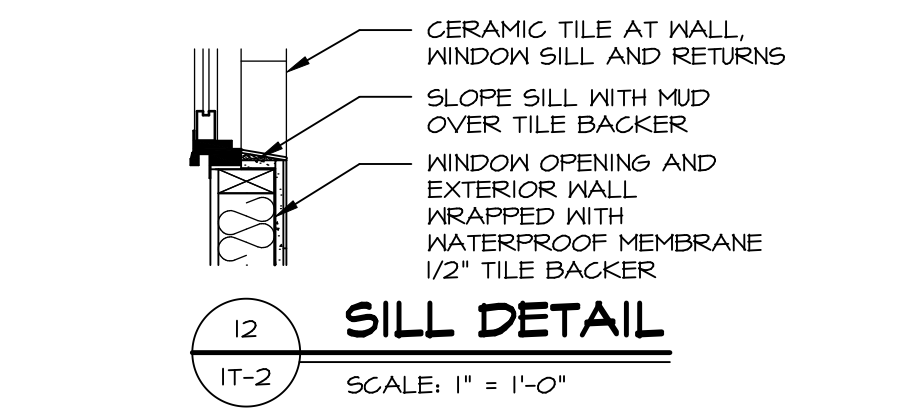
10 SHOWER SEAT SECTION
SCALE: 1-1/2" = 1'-0"



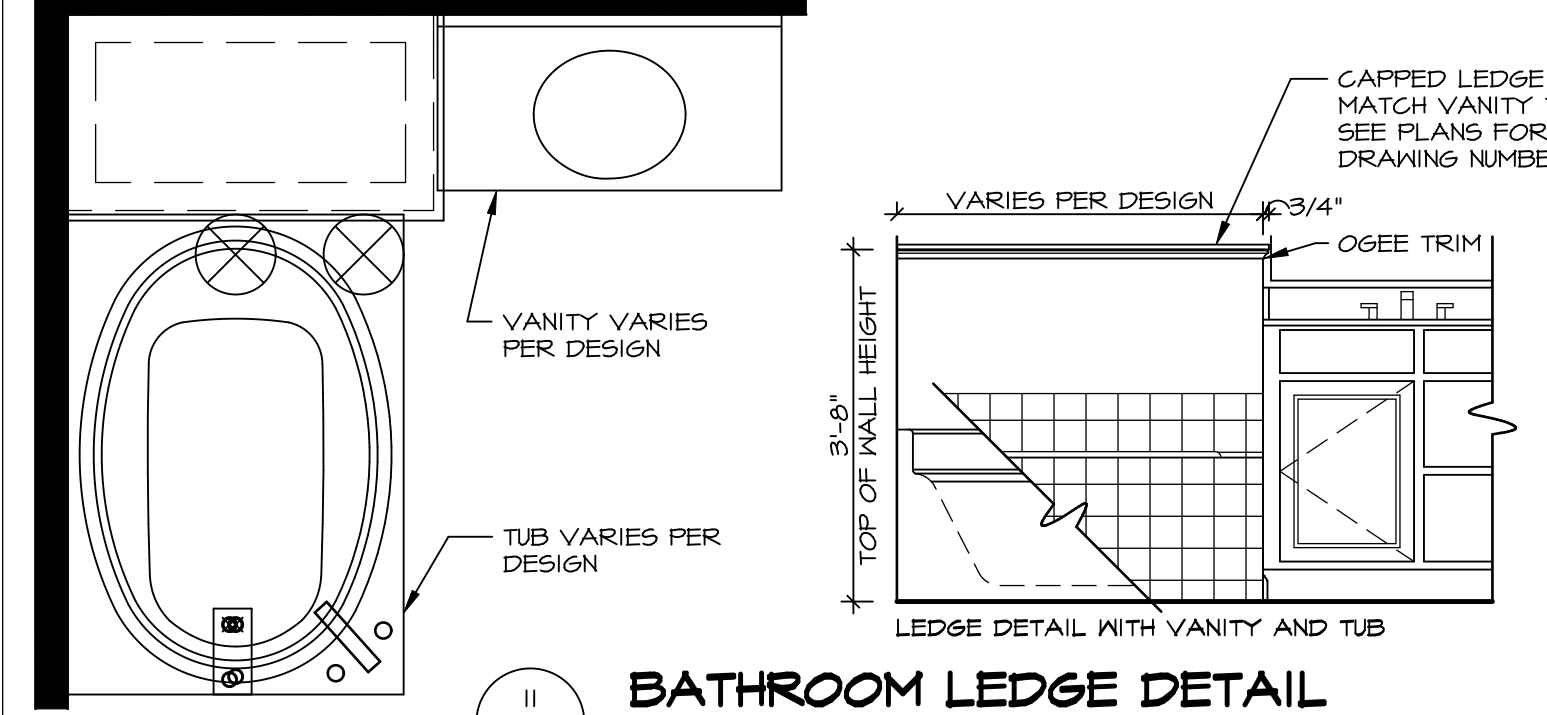
11 ALTERNATE SHOWER PAN DETAIL



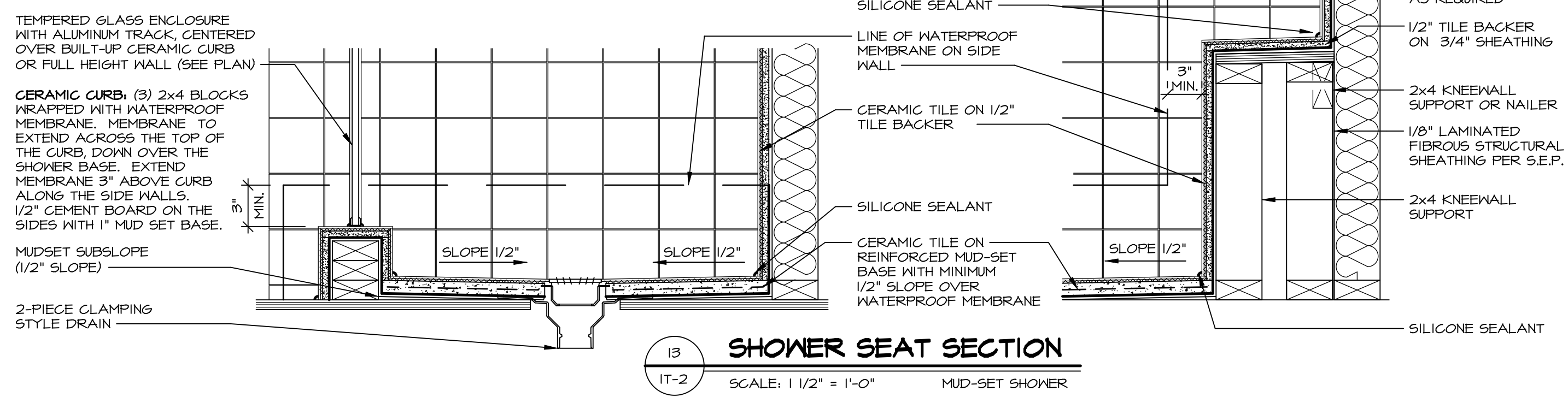
12 BATHROOM LEDGE DETAIL
SCALE: 1/2" = 1'-0"



13 SILL DETAIL
SCALE: 1" = 1'-0"



14 BATHROOM LEDGE DETAIL
SCALE: 1/2" = 1'-0"



15 SHOWER SEAT SECTION
SCALE: 1 1/2" = 1'-0" MUD-SET SHOWER

REVISIONS

REV. NO.	DATE	DESCRIPTION
1	5/1/17	EBP - REVISED DETAIL 1 AND 11 TO REMOVE TUB ACCESS PANEL REF. (099 #15 3/4" x 1/2")
2	9/2/17	EBP - REVISED T-FLY NOTE TO CALL OUT LFS
3	9/2/17	EBP - REVISED NOTE ON DETAIL #1 - REVISED ORDER OF MATERIAL PAR#49304
4	8/28/18	EBP - DTL 8 / 19 ME REMOVED THE 2X6 BULKING AT BASE OF SHWR REQUEST #4663

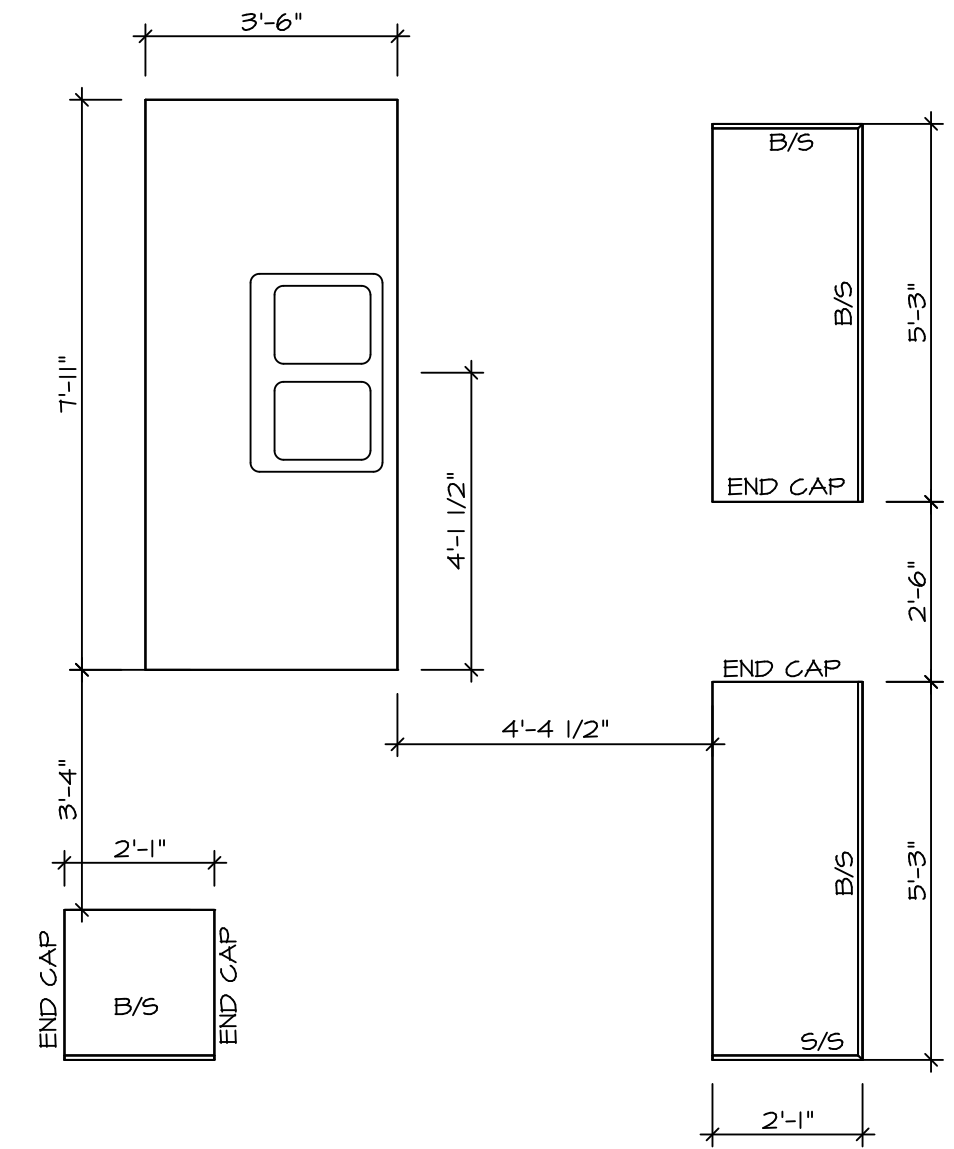
NVR, Inc., owner, expressly reserves its common law copyright and other property rights in these plans. These plans are not to be reproduced, stored in a retrieval system, or transmitted in any form or by any means, electronic, mechanical, photocopying, recording, or by any information storage and retrieval system, without first obtaining the expressed written consent of NVR, Inc.

NVR
Architectural Services
5285 West... Suite 100
Frederick, MD 21703

SET NO. NVR

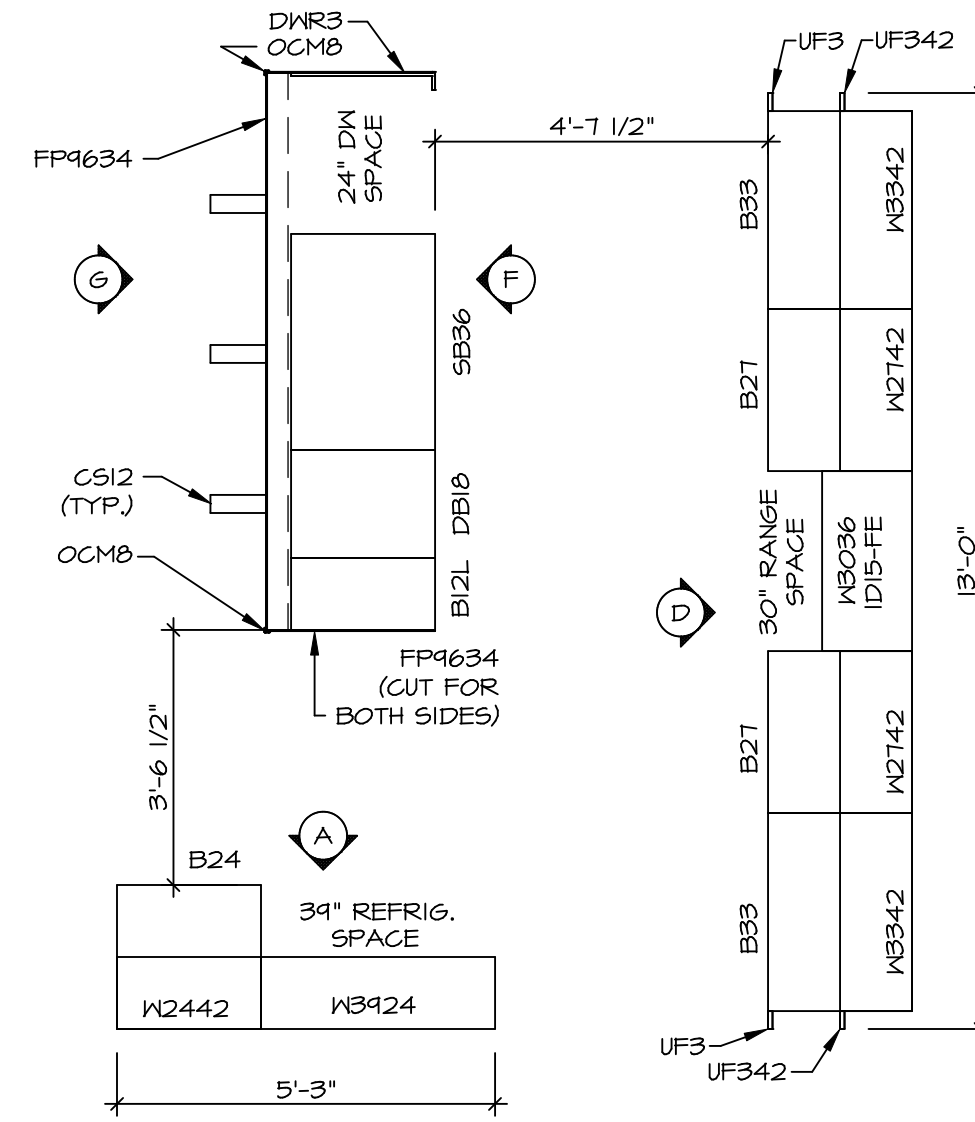
MODEL	DRAWING TITLE	OPTION
IT-2	STANDARD DETAILS INTERIOR TRIM DETAILS BATH DETAILS	

SHEET NO. **IT-2**



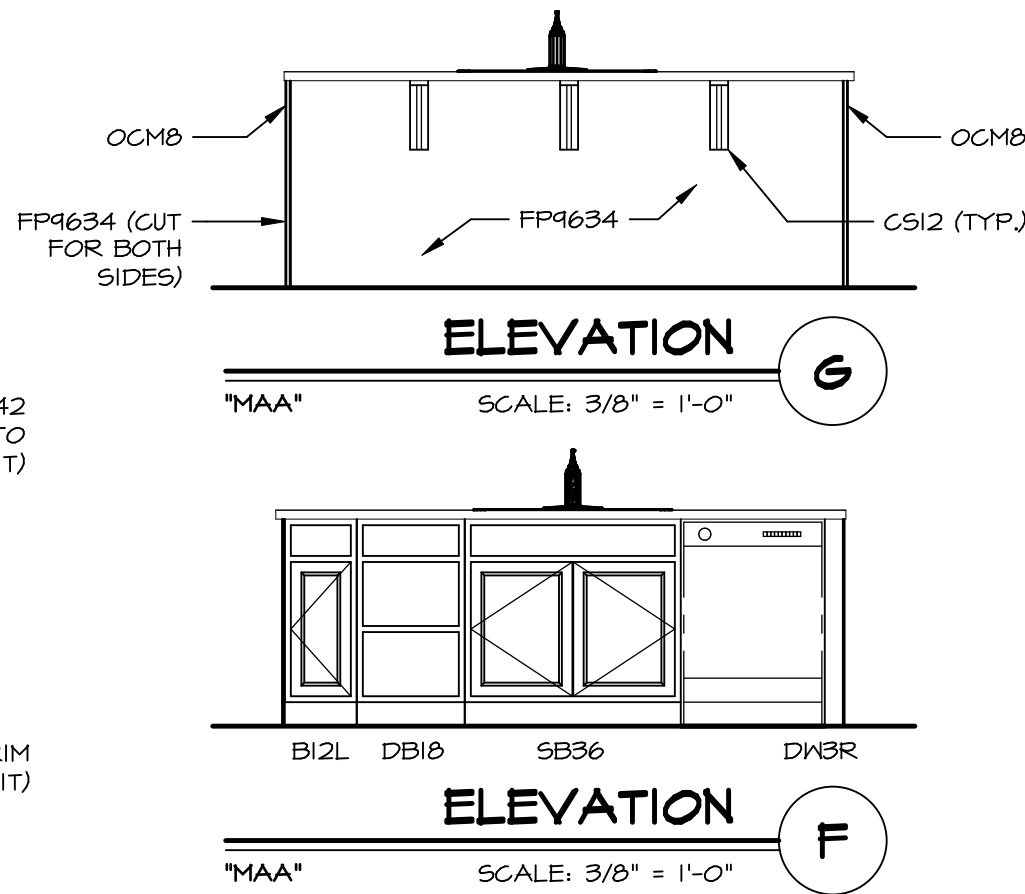
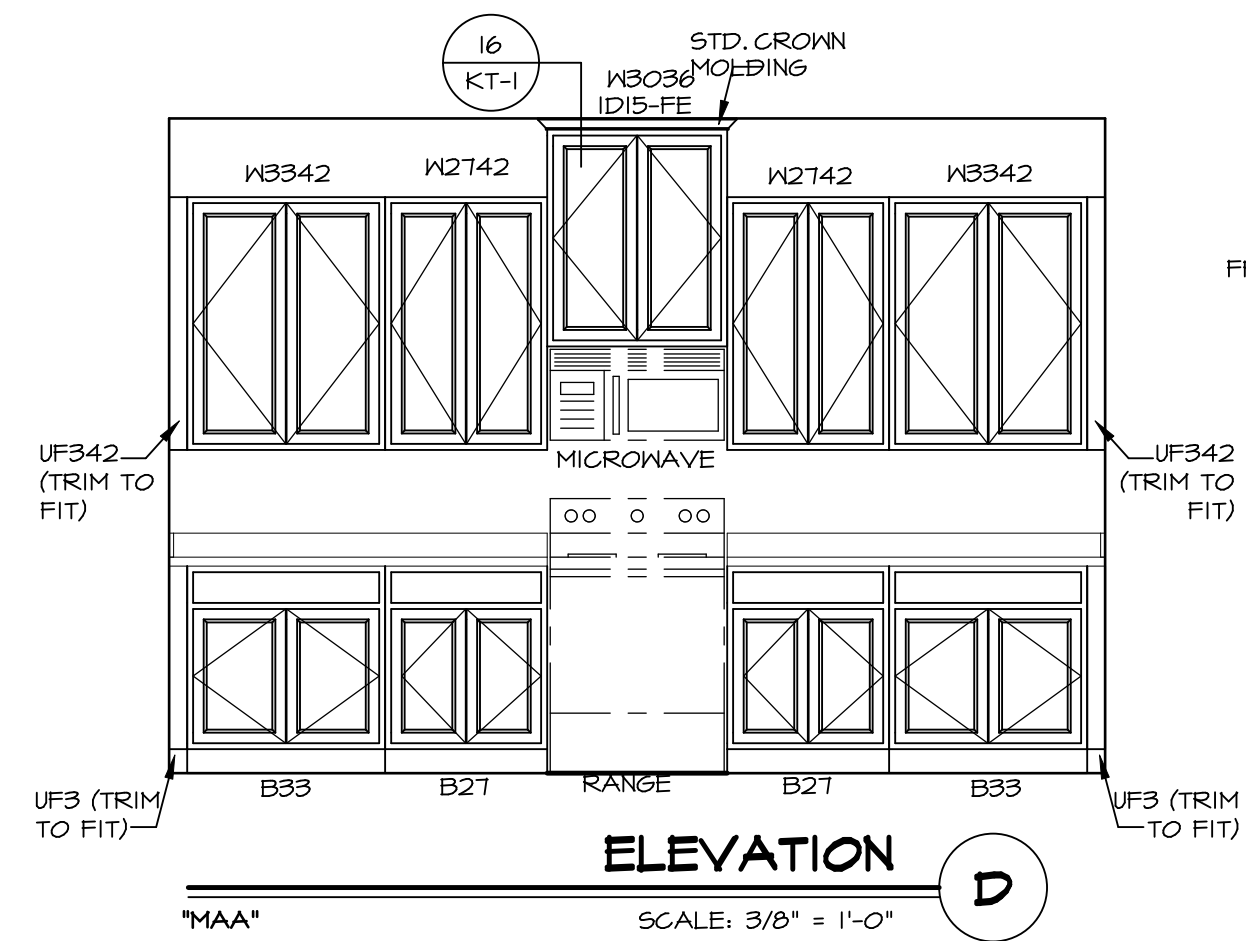
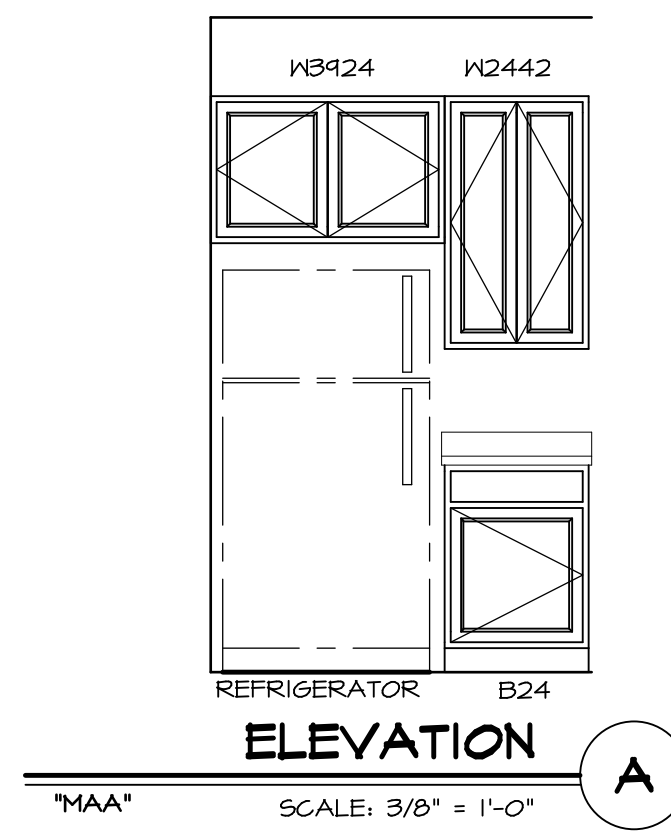
**KITCHEN COUNTERTOP
PLAN - KT-3293**

SCALE: 3/8" = 1'-0" A-12

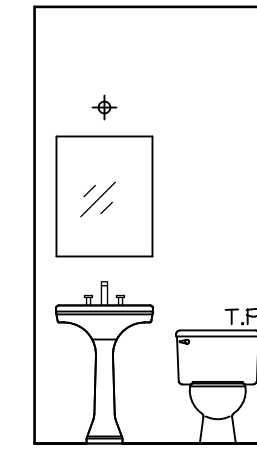


**KITCHEN CABINET
PLAN - KC-3293**

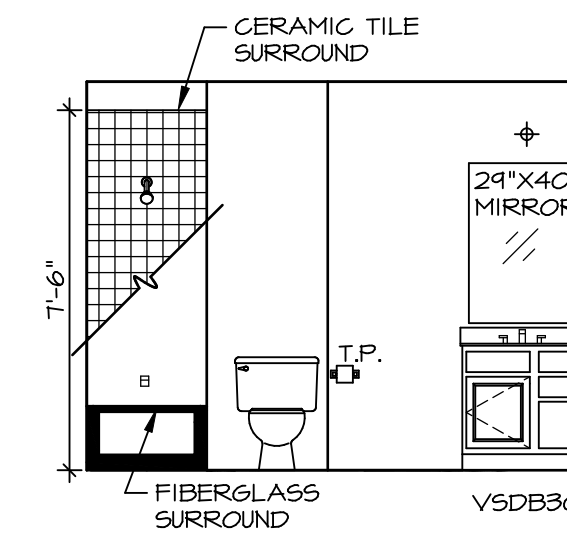
SCALE: 3/8" = 1'-0" A-12



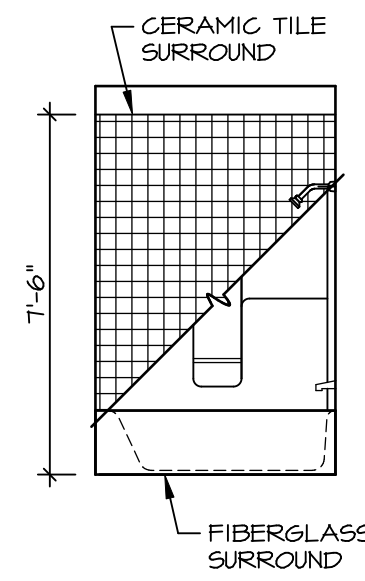
SHEET NO. A-12	MODEL NAPLES	DRAWING TITLE KITCHEN SECTION	OPTION DESCRIPTION	REV. NO.	DATE	REMARKS
SET NO. NAPOO VERSION 06 DRAWN BY TN DATE: 05/22/15 OPTION				NVR, Inc., owner, expressly reserves its copyright in these plans. These plans are not to be reproduced, changed, copied in any way, or used for any purpose not intended by NVR, Inc. without the written consent of NVR, Inc.		
NVR NVR, Inc. Architectural Services Architects & Planners 5285 Westpark Drive, Suite 100 Frederick, MD 21703				C:\NVR\Solves\NAPLES_NAPOO_06\DCY-CH-3560\1355588\Sheets\A-12_KIT_LS.dwg 03/01/19 - 7:56 am		
SHEET NO. A-12 MODEL NAPLES DRAWING TITLE KITCHEN SECTION OPTION DESCRIPTION				SET NO. NAPOO VERSION 06 DRAWN BY TN DATE: 05/22/15 OPTION		
SHEET NO. A-12 MODEL NAPLES DRAWING TITLE KITCHEN SECTION OPTION DESCRIPTION				SET NO. NAPOO VERSION 06 DRAWN BY TN DATE: 05/22/15 OPTION		



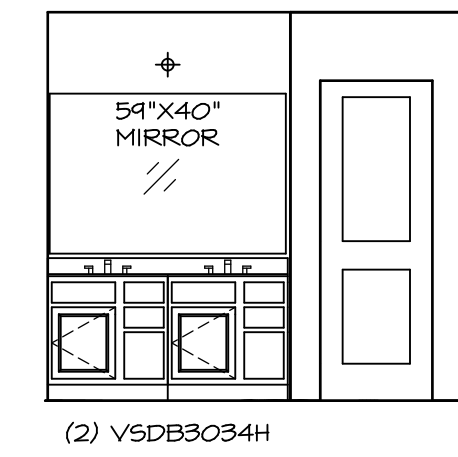
A POWDER ROOM
SCALE: 1/4" = 1'-0"



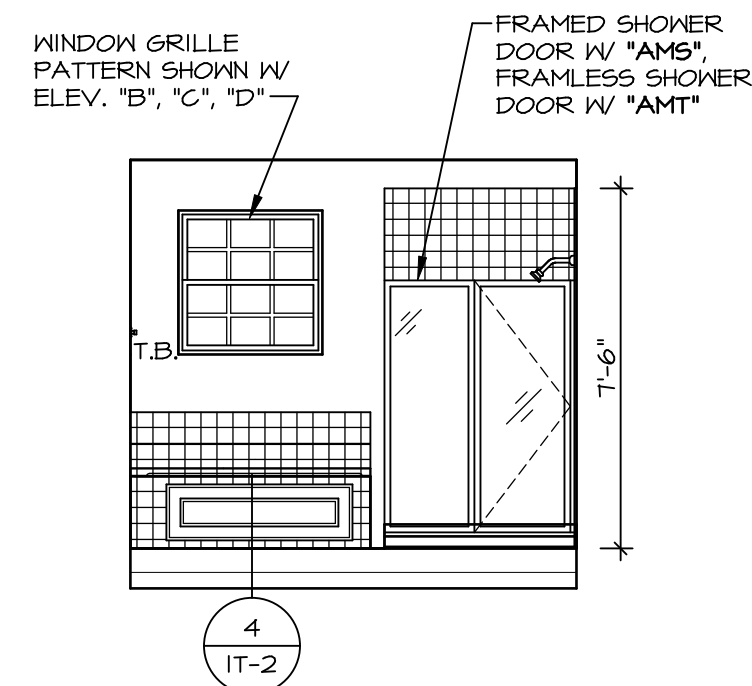
B BATH #1
SCALE: 1/4" = 1'-0"



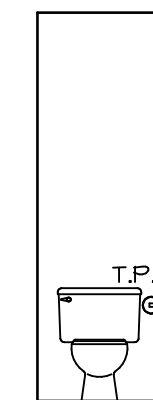
C BATH #1
SCALE: 1/4" = 1'-0"



D OWNER'S BATH
SCALE: 1/4" = 1'-0"



H OWNER'S BATH
SCALE: 1/4" = 1'-0"



E OWNER'S BATH
SCALE: 1/4" = 1'-0"

NOTES:

1. TEMPERED GLASS SHOWER ENCLOSURE WITH SWING DOOR OR OPTIONAL SLIDING DOOR. BY DIVISION
2. TUB ACCESS PANELS PROVIDED AS NEEDED. ALL MATERIALS BY DIVISION
3. REFER TO SHEET ET-2 FOR TUB AND SHOWER DETAILS.
4. ALL V5DB24-42 DRAWERS TO BE SET ON RIGHT HAND.
5. BATH ELEVATIONS ARE SHOWN PER PLAN.

SHEET NO. A-13	MODEL NAPLES	SET NO. NAPOO	REVISIONS	REMARKS
	DRAWING TITLE BATH ELEVATIONS	VERSION 06		
	OPTION DESCRIPTION	OPTION		
51				

NVR
NVR, Inc.
Architectural Services
Architects
5285 Westover Lane, Suite 100
Frederick, MD 21703

NVR, Inc., owner, expressly reserves its copyright in these plans. These plans are not to be reproduced, changed, copied in any way, or otherwise used, without the prior written consent of NVR, Inc.