

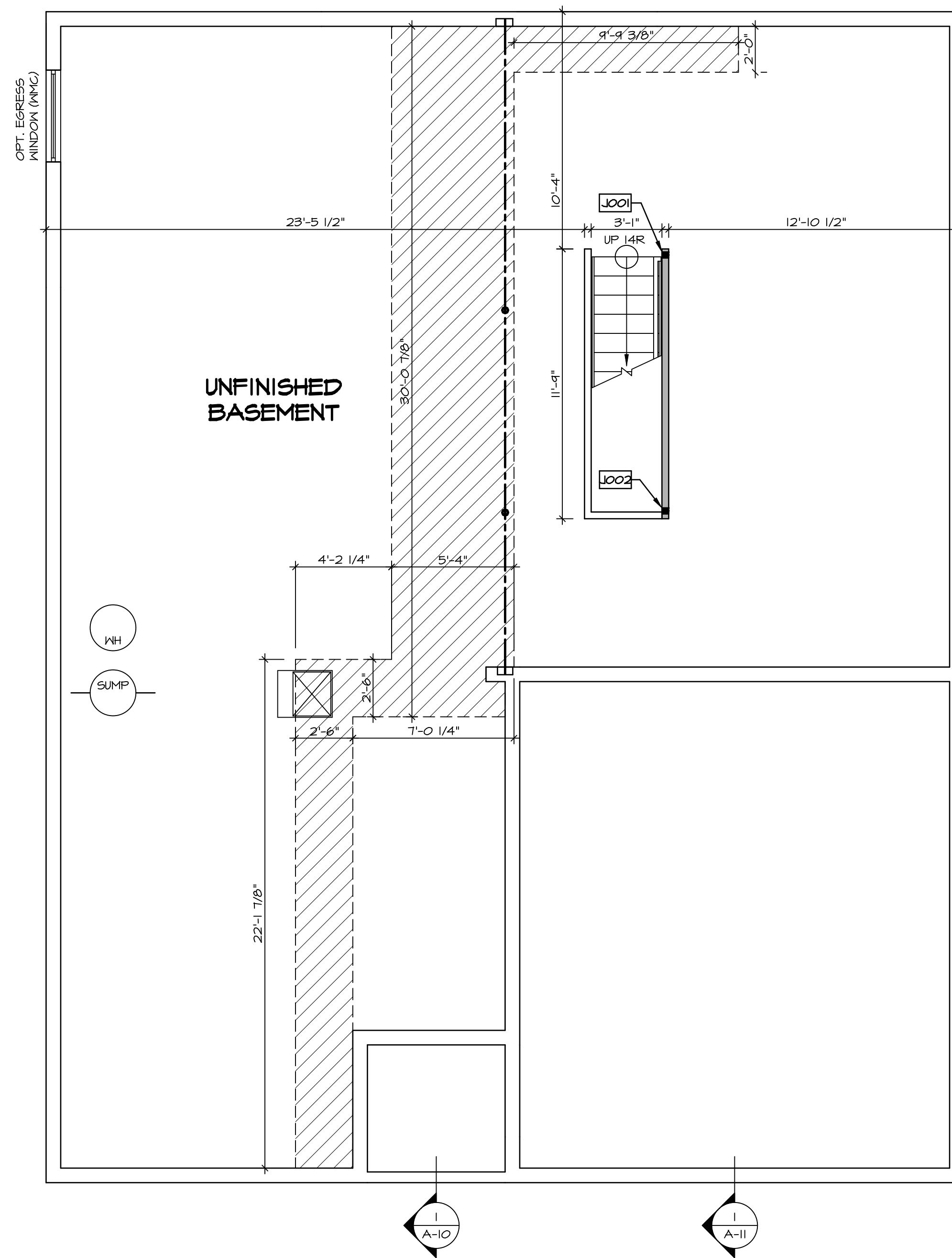
1  
A-5 **PLUMBING PLAN**  
SCALE: 1/4" = 1'-0"

SHEET NO. <b>A-5</b>	MODEL <b>ANDOVER</b>	SET NO. AND00
	DRAWING TITLE PLUMBING PLAN	VERSION 01
	OPTION DESCRIPTION	DRAWN BY HD
<b>20</b>		DATE: OPTION

**NVR**  
NVR, Inc. Suite 100  
5285 Washburne Rd.  
Frederick, MD 21703

© NVR, Inc. expressly reserves the right to modify or amend these plans at any time without notice. These plans are not to be reproduced, changed or altered in any way without the written consent of NVR, Inc.

REV. NO.	DATE	REMARKS



LEGEND	
	BEARING WALL
	NON BEARING WALL
	INDICATES BEARING FROM POINT-LOAD ABOVE
	JACKS
	BEAM/HEADER
	PAD FOOTING
	STEEL COLUMN
	PORTAL FRAME
	JOIST/TRUSS
	LVL
	ENGINEERING PAGE NUMBER

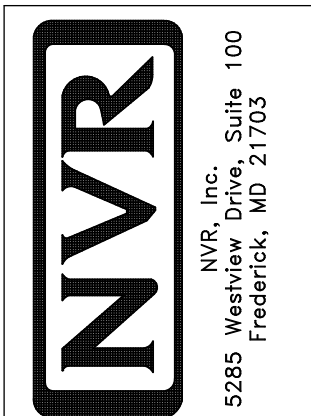
SEE FC DETAILS FOR FRAMING CONNECTORS

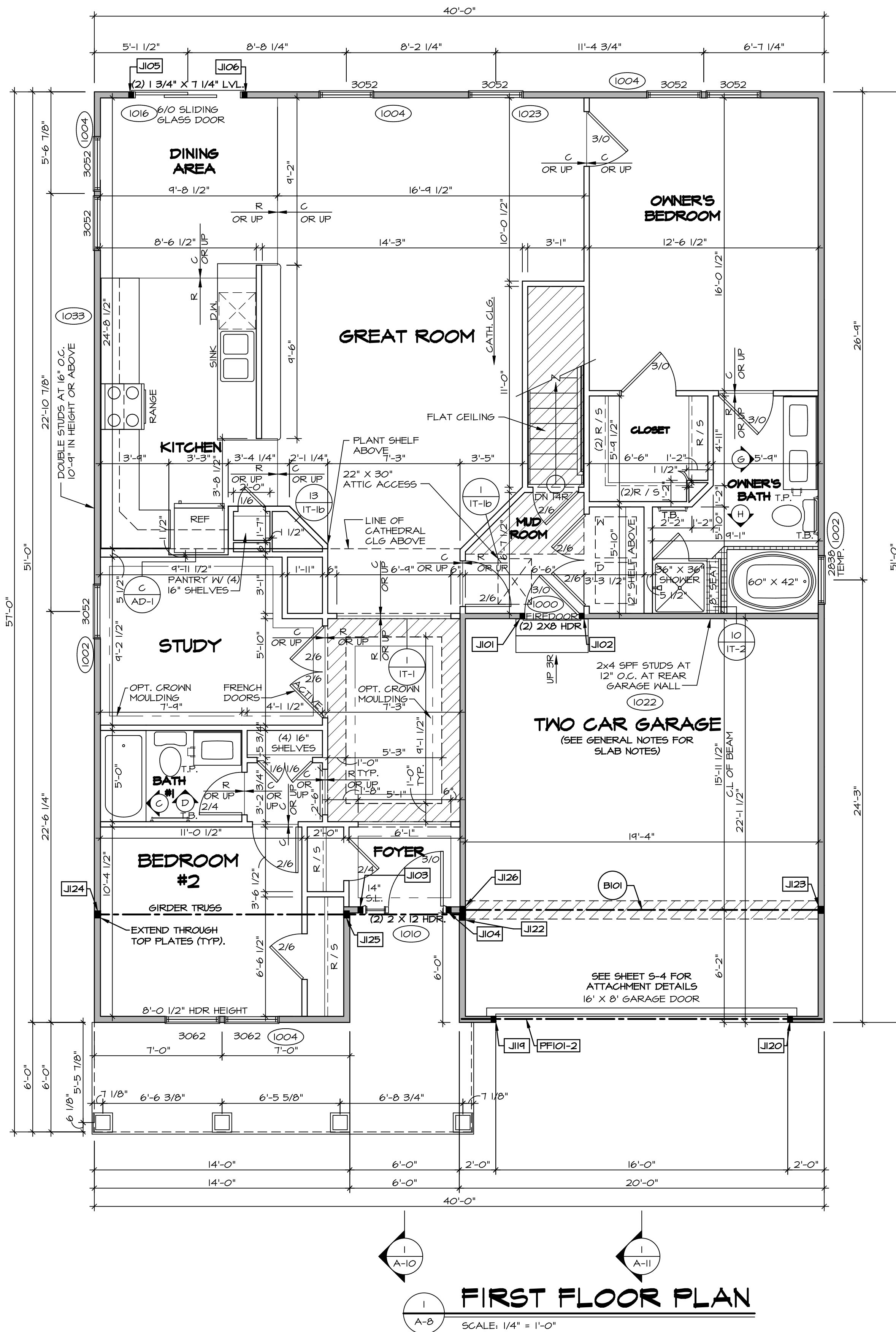
- FLOOR PLAN NOTES**
- ALL HEADERS ARE (2) 2x6 w/ 2x4 WALLS OR (3) 2x6 w/ 2x6 WALLS, UNLESS OTHERWISE NOTED.
  - ALL HEADERS TO HAVE (1) 2x4 OR 2x6 JACK EACH END, UNLESS OTHERWISE NOTED.
  - ALL EXTERIOR WALLS TO BE 4" AND ALL INTERIOR WALLS TO BE 3 1/2" UNLESS OTHERWISE NOTED.
  - HATCHED AREAS INDICATE DROPPED CEILINGS. ALL DROPPED CEILINGS ARE 12" UNLESS OTHERWISE NOTED.
  - SEE "BRACED WALL PANEL DETAIL SHEET" FOR SPECIAL WALL FRAMING LOCATIONS AND HEADER SIZES, IF APPLICABLE.
  - SEE STANDARD DETAIL CATEGORY "IT" SHEET(S) FOR INTERIOR TRIM DETAILS.
  - SEE ARCHITECTURAL DETAIL SHEET "AD" FOR HOUSE SPECIFIC INTERIOR TRIM OPTION TABLE.
  - ALL WINDOWS HAVE 7'-0 1/2" HEADER HEIGHT UNLESS OTHERWISE NOTED.

- GYPSUM NOTES**
- AT GARAGE:**  
 GYPSUM BOARD AT COMMON WALLS, CEILINGS, BEAM WRAPS AND SUPPORTS PER STANDARD DETAIL FA-1(b) FIRE ASSEMBLIES OR AS REQUIRED BY LOCAL CODE.
- AT STAIRS:**  
 1/2" GYPSUM BOARD AT UNDERSIDE OF STAIRS AND WALLS IN CLOSET
- BASEMENT WITH I-JOIST FLOOR SYSTEM ABOVE:**  
 UNFINISHED BASEMENT CEILING AREA
- WITH OPTION "SG1" - DRYWALL UNFINISHED BASEMENT CEILING AREA**
- NOTES:**
- 1/2" GYPSUM WALL BOARD REQUIRED ON CEILING IN UNFINISHED AREAS WHEN NO SPRINKLER SYSTEM IS INSTALLED
  - A MAXIMUM AREA OF 80 SQ FT MAY BE OMITTED AS NEEDED FOR INSTALLATION OF PLUMBING, ELECTRICAL, AND/OR HVAC (TYPICALLY AN 8'-0"x8'-0" CEILING SPACE ABOVE MECHANICAL AREA).
  - PROVIDE FIRE BLOCKING AS REQUIRED AT PERIMETER OF ANY AREAS WHERE DRYWALL HAS BEEN OMITTED.

**BASEMENT FLOOR PLAN**  
 SCALE: 1/4" = 1'-0"

SHEET NO.	MODEL	SET NO.	VERSION	DATE	OPTION	REMARKS
A-6	ANDOVER DRAWING TITLE BASEMENT FLOOR PLAN	01	01	DT		
23						





**FIRST FLOOR PLAN**

SCALE: 1/4" = 1'-0"

**GYPSUM NOTES**

AT GARAGE:  
GYPSUM BOARD AT COMMON WALLS, CEILING, BEAM WRAPS AND SUPPORTS PER STANDARD DETAIL FA-16B) FIRE ASSEMBLIES OR AS REQUIRED BY LOCAL CODE.

AT STAIRS:  
1/2" GYPSUM BOARD AT UNDERSIDE OF STAIRS AND WALLS IN CLOSET

**FLOOR PLAN NOTES**

- ALL HEADERS ARE (2) 2x6 w/ 2x4 WALLS OR (3) 2x6 w/ 2x6 WALLS, UNLESS OTHERWISE NOTED.
- ALL HEADERS TO HAVE (1) 2x4 OR 2x6 JACK EACH END, UNLESS OTHERWISE NOTED.
- ALL EXTERIOR WALLS TO BE 4" AND ALL INTERIOR WALLS TO BE 3 1/2", UNLESS OTHERWISE NOTED.
- HATCHED AREAS INDICATE DROPPED CEILING. ALL DROPPED CEILING ARE 12" UNLESS OTHERWISE NOTED.
- SEE "BRACED WALL PANEL DETAIL SHEET" FOR SPECIAL WALL FRAMING LOCATIONS AND HEADER SIZES, IF APPLICABLE.
- SEE STANDARD DETAIL CATEGORY "IT" SHEET(S) FOR INTERIOR TRIM DETAILS.
- SEE ARCHITECTURAL DETAIL SHEET "AD" FOR HOUSE SPECIFIC INTERIOR TRIM OPTION TABLE.
- ALL WINDOWS HAVE T=0 1/2" HEADER HEIGHT UNLESS OTHERWISE NOTED.

**LEGEND**

- BEARING WALL
  - NON BEARING WALL
  - INDICATES BEARING FROM POINT-LOAD ABOVE
  - JACKS
  - BEAMHEADER
  - PAD FOOTING
  - STEEL COLUMN
  - PORTAL FRAME
  - JOIST/TRUSS
  - LVL
  - ENGINEERING PAGE NUMBER
- SEE FG DETAILS FOR FRAMING CONNECTORS

**FIRST FLOOR JACK SCHEDULE**

IDENTIFIER	DESCRIPTION	OPTIONS	ENG. NUM.	REMARKS
J101	JACK - (2) 2X4 SPF STUD GRADE	ZIA	1000	
J102	JACK - (2) 2X4 SPF STUD GRADE	ZIA	1000	
J103	JACK - (2) 2X4 SPF STUD GRADE	SXC	1010	
J104	JACK - (2) 2X4 SPF STUD GRADE	SXC	1010	
J105	JACK - (2) 2X4 SPF STUD GRADE	DGT	1016	
J106	JACK - (2) 2X4 SPF STUD GRADE	DGT	1016	
J119	JACK - (2) 2X4 SPF STUD GRADE	SXC	1012	
J120	JACK - (2) 2X4 SPF STUD GRADE	SXC	1012	
J122	JACK - (3) 2X4 SPF STUD GRADE	ZIA / ELC / ELL	1021	
J123	JACK - (3) 2X4 SPF STUD GRADE	ZIA / SXC	1025	
J124	JACK - (3) 2X4 SPH	ZIA / ELC / ELL	1021	
J125	JACK - (3) 2X4 SPH	ZIA / ELC / ELL	1021	
J126	JACK - (3) 2X4 SPF STUD GRADE	ZIA / SXC	1025	

**LVL PLY TO PLY FASTENING SCHEDULE: (WHERE APPLICABLE BASED ON LVL USAGE)**

- (2) PLY UP TO AND INCLUDING 11 7/8" TALL; FASTEN PLYS W/ (2) ROWS 16D NAILS AT 12" O.C.
- (2) PLY 14" TO AND INCLUDING 18" TALL (INCLUSIVE); FASTEN PLYS W/ (3) ROWS 16D NAILS AT 12" O.C.
- (2) PLY 20" TALL AND OVER; FASTEN PLYS W/ (4) ROWS 16D NAILS AT 12" O.C.
- (3) PLY UP TO AND INCLUDING 11 7/8" TALL; FASTEN PLYS W/ (2) ROWS 16D NAILS AT 12" O.C. FROM EACH SIDE
- (3) PLY 14" TO AND INCLUDING 18" TALL (INCLUSIVE); FASTEN PLYS W/ (3) ROWS 16D NAILS AT 12" O.C. FROM EACH SIDE
- (3) PLY 20" TALL AND OVER; FASTEN PLYS W/ (4) ROWS 16D NAILS AT 12" O.C. FROM EACH SIDE

**FIELD INSTALLED FIRST FLOOR BEAM/HEADER SCHEDULE**

IDENTIFIER	DESCRIPTION	LENGTH	OPTIONS	ENG. NUM.	REMARKS
B101	BEAM STEEL - W12X14	19'-10 1/2"	ZIA / SXC	1025	
PF101-2	LVL - 11-04	19'-4"	SXC	1012	1A

**STEEL COLUMN SCHEDULE**

IDENTIFIER	STYLE	HEIGHT	OPTIONS	ENG. NUM.	REMARKS
------------	-------	--------	---------	-----------	---------

REVISIONS

REV. NO. DATE

NVR, Inc. expressly reserves the right to modify or amend these plans at any time without notice. These plans are not to be reproduced, changed or altered in any way without the written consent of NVR, Inc.

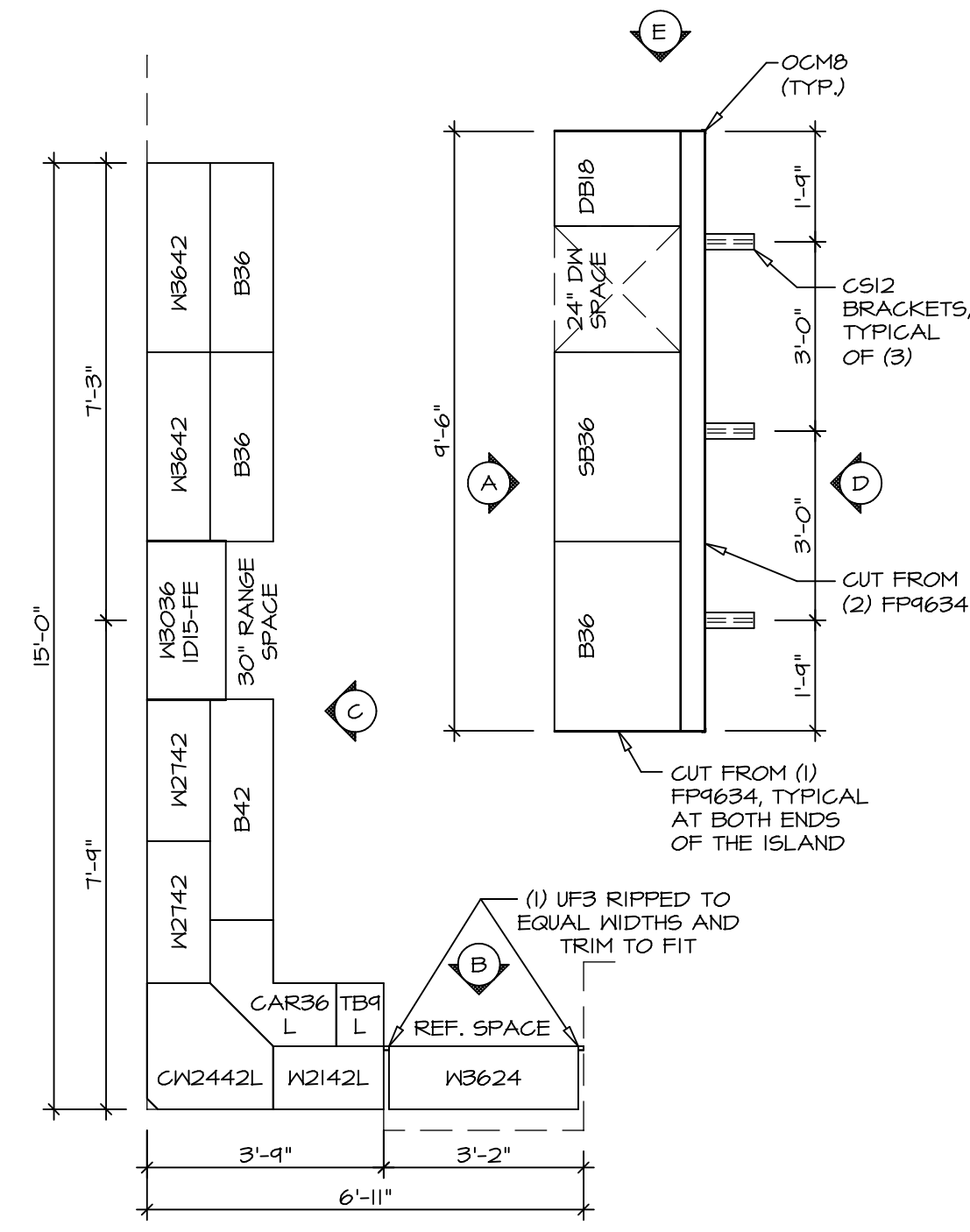


NVR, Inc. Suite 100  
5285 Washington Blvd.  
Frederick, MD 21703

SET NO. AND/OR VERSION  
DRAWN BY HD  
DATE:  
OPTION

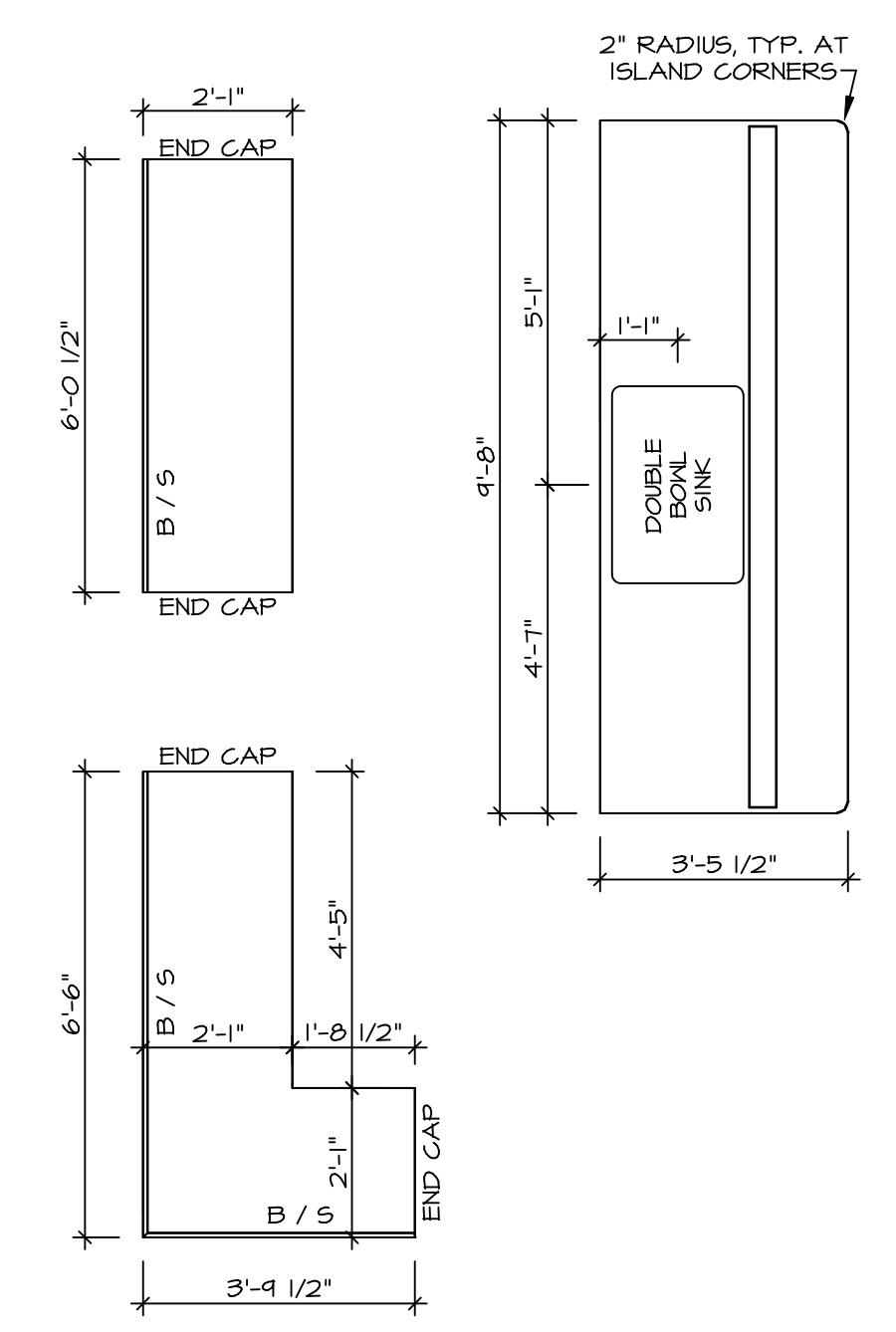
MODEL: ANDOVER  
DRAWING TITLE: FIRST FLOOR PLAN  
OPTION DESCRIPTION

SHEET NO. A-8  
25



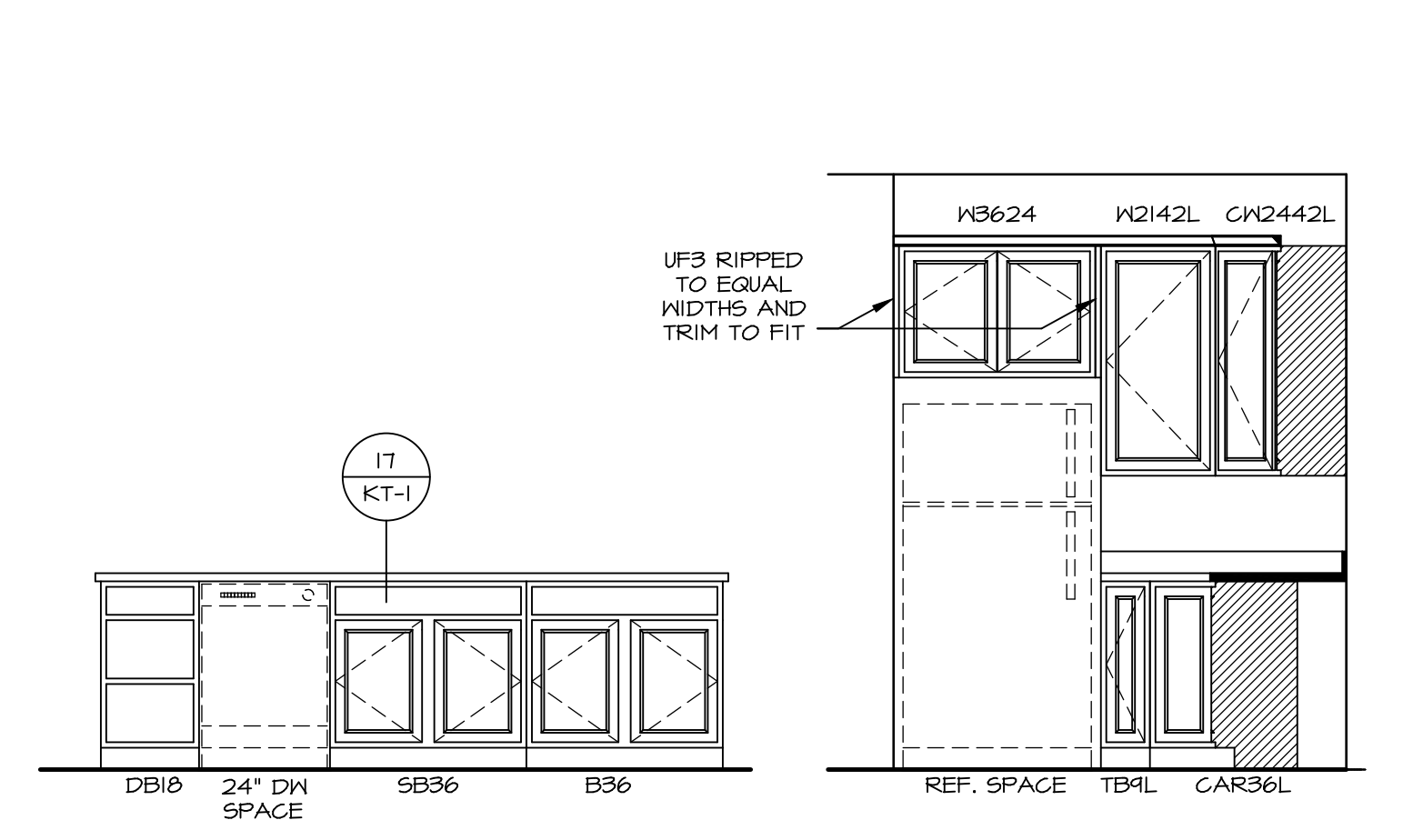
**KITCHEN CABINET LAYOUT (KC-3357)**

1  
A-13 SCALE: 3/8" = 1'-0"



**KITCHEN COUNTERTOP LAYOUT (KC-3357)**

2  
A-13 SCALE: 3/8" = 1'-0"

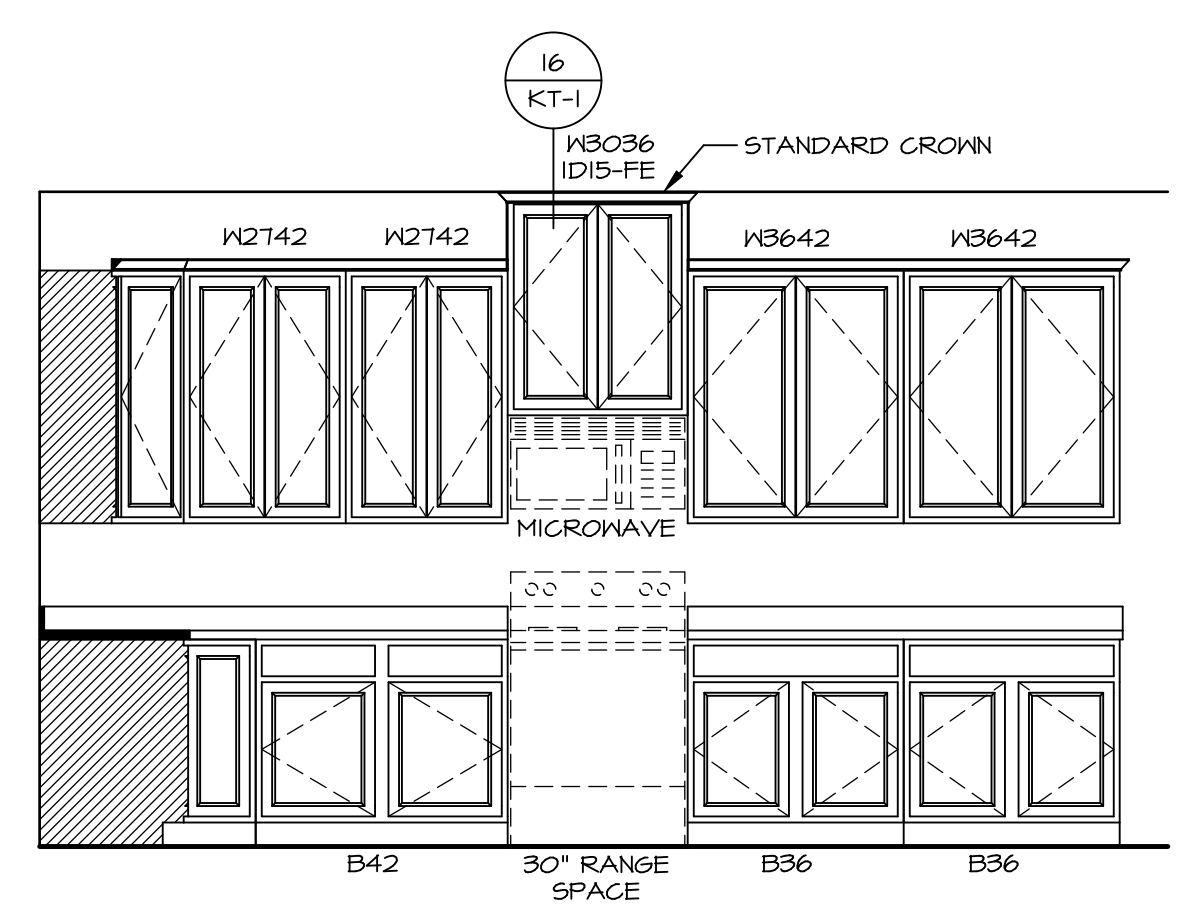


**A ELEVATION "A"**

SCALE: 3/8" = 1'-0"

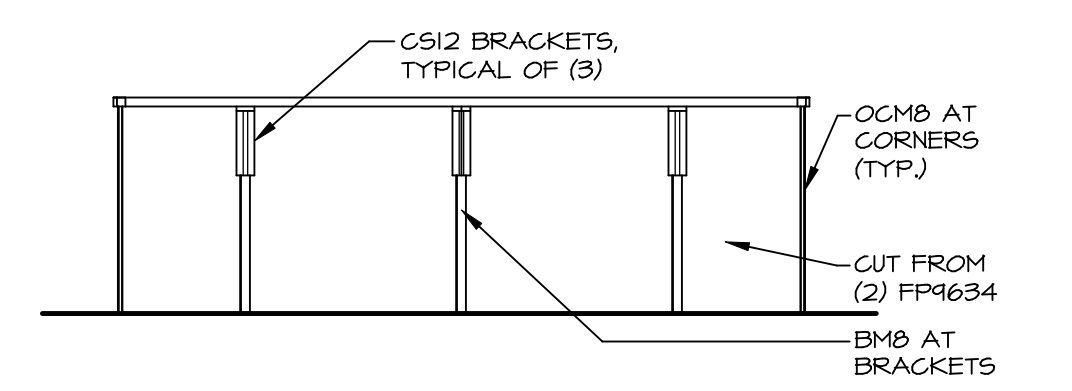
**B ELEVATION "B"**

SCALE: 3/8" = 1'-0"



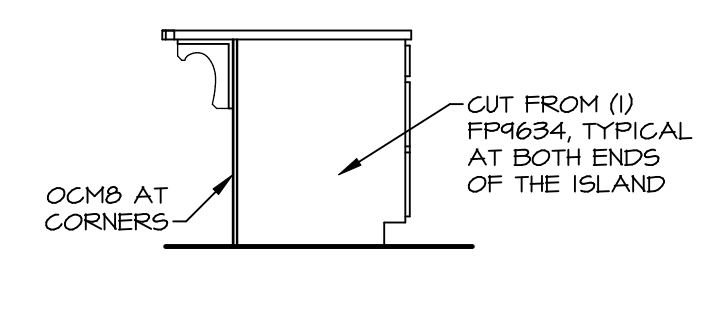
**C ELEVATION "C"**

SCALE: 3/8" = 1'-0"



**D ELEVATION "D"**

SCALE: 3/8" = 1'-0"



**E ELEVATION "E"**

SCALE: 3/8" = 1'-0"

MODEL	ANDOVER
DRAWING TITLE	KITCHENS
OPTION DESCRIPTION	

SHEET NO. **A-13**

38

SET NO. AND00  
VERSION 01  
DRAWN BY HD  
DATE:  
OPTION



NVR, Inc. Suite 100  
5285 Washburne Rd.  
Frederick, MD 21703

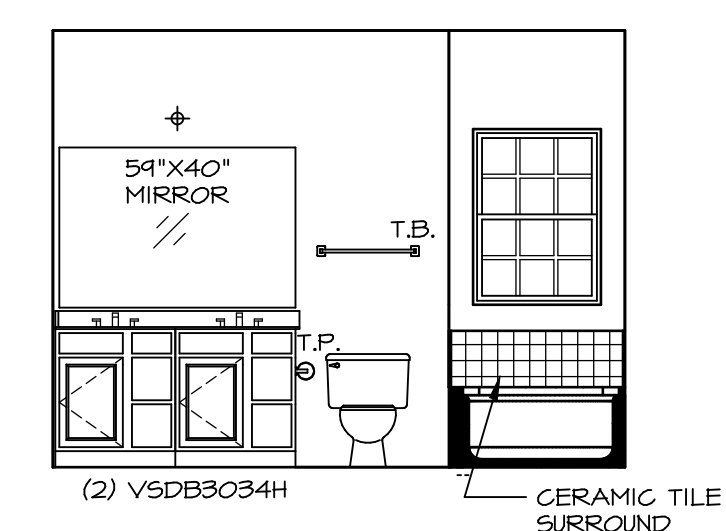
© NVR, Inc. expressly reserves the right to modify or change these plans without notice. These plans are not to be reproduced, changed or altered in any way without the written consent of NVR, Inc.

REV. NO. DATE

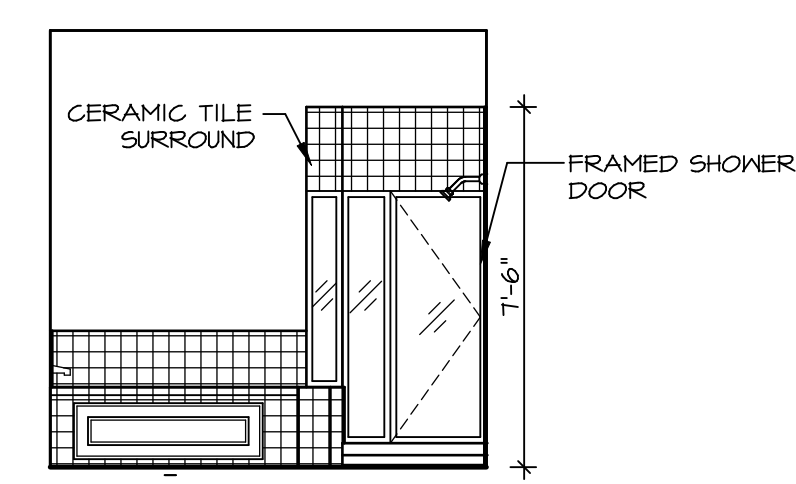
REMARKS

**NOTES:**

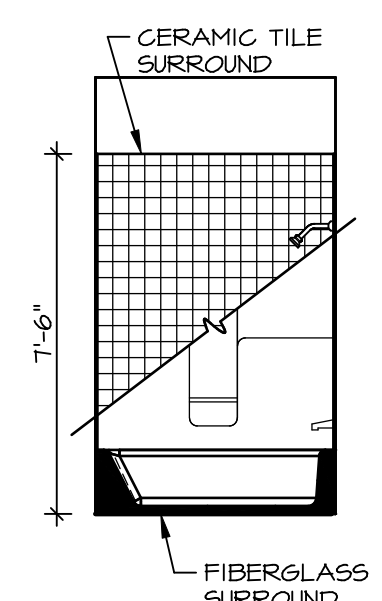
1. TEMPERED GLASS SHOWER ENCLOSURE WITH SWING DOOR OR OPTIONAL SLIDING DOOR BY DIVISION
2. TUB ACCESS PANELS PROVIDED AS NEEDED, ALL MATERIALS BY DIVISION
3. REFER TO SHEET IT-2 FOR TUB AND SHOWER DETAILS.
4. ALL VSDB24-42 DRAWERS TO BE SET ON RIGHT HAND.
5. BATH ELEVATIONS ARE SHOWN PER PLAN.



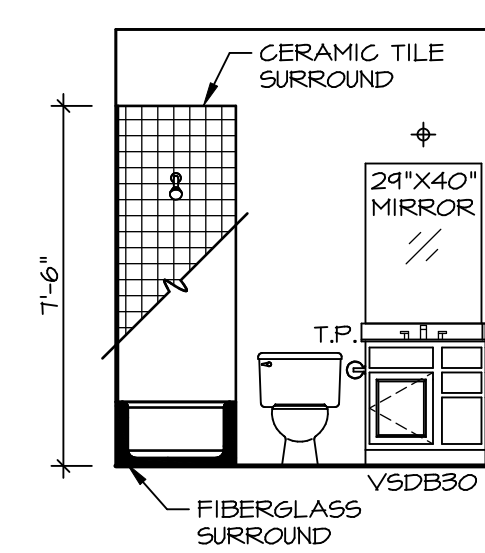
**G** OWNER'S BATH  
SCALE: 1/4" = 1'-0"



**H** OWNER'S BATH  
SCALE: 1/4" = 1'-0"



**C** BATH #1  
SCALE: 1/4" = 1'-0"



**D** BATH #1  
SCALE: 1/4" = 1'-0"

SHEET NO. <b>A-14</b>	MODEL <b>ANDOVER</b> DRAWING TITLE <b>BATH ELEVATIONS</b>	SET NO. ANDOO	REVISION	DATE	REVISION	DATE	REVISION	DATE
		VERSION 01	DRAWN BY HD	DATE:	OPTION			
40	OPTION DESCRIPTION							

© NVR, Inc. expressly reserves the right to modify or change any of the information contained in these plans. These plans are not to be reproduced, changed or copied in any way without the written consent of NVR, Inc.

