

BASEMENT FLOOR PLAN
SCALE: 1/4" = 1'-0"

LEGEND

[Symbol]	BEARING WALL
[Symbol]	NON BEARING WALL
[Symbol]	INDICATES BEARING FROM POINT-LOAD ABOVE
[Symbol]	JACKS
[Symbol]	BEAM/HEADER
[Symbol]	PAD FOOTING
[Symbol]	STEEL COLUMN
[Symbol]	PORTAL FRAME
[Symbol]	JOIST/TRUSS
[Symbol]	LVL
[Symbol]	ENGINEERING PAGE NUMBER

SEE FC DETAILS FOR FRAMING CONNECTORS

- FLOOR PLAN NOTES**
- ALL HEADERS ARE (2) 2x6 w/ 2x4 WALLS OR (3) 2x6 w/ 2x6 WALLS, UNLESS OTHERWISE NOTED.
 - ALL HEADERS TO HAVE (1) 2x4 OR 2x6 JACK EACH END, UNLESS OTHERWISE NOTED.
 - ALL EXTERIOR WALLS TO BE 4" AND ALL INTERIOR WALLS TO BE 3 1/2", UNLESS OTHERWISE NOTED.
 - HATCHED AREAS INDICATE DROPPED CEILINGS. ALL DROPPED CEILINGS ARE 12" UNLESS OTHERWISE NOTED.
 - SEE "BRACED WALL PANEL DETAIL SHEET" FOR SPECIAL WALL FRAMING LOCATIONS AND HEADER SIZES, IF APPLICABLE.
 - SEE STANDARD DETAIL CATEGORY "IT" SHEET(S) FOR INTERIOR TRIM DETAILS.
 - SEE ARCHITECTURAL DETAIL SHEET "AD" FOR HOUSE SPECIFIC INTERIOR TRIM OPTION TABLE.
 - ALL WINDOWS HAVE 7'-0 1/2" HEADER HEIGHT UNLESS OTHERWISE NOTED.

- GYPSON NOTES**
- AT GARAGE:
GYPSUM BOARD AT COMMON WALLS, CEILING, BEAM WRAPS AND SUPPORTS PER STANDARD DETAIL FA-10b) FIRE ASSEMBLIES OR AS REQUIRED BY LOCAL CODE.
- AT STAIRS:
1/2" GYPSUM BOARD AT UNDERSIDE OF STAIRS AND WALLS IN CLOSET

SHEET NO. A-6	MODEL VERSAILLES	SET NO. VRS00	REV. NO. 1	DATE 08/09/19	REMARKS
		VERSION 01			
	DRAWING TITLE BASEMENT FLOOR PLAN	DRAWN BY			
	OPTION DESCRIPTION	DATE:			
		OPTION			

NVR, Inc. owner, expressly reserves its copyright in these plans. These plans are not to be reproduced, changed, copied in any way, or used for any other project without the written consent of NVR, Inc.

NVR
NVR, Inc.
Architectural Services
Architects
5285 West... Suite 100
Frederick, MD 21703

C:\NVR\Solves\VERSAILLES_VRS00_01\DCI-CH-S377\1221685\Sheet\Col_Specific\37_A-6_BSM1_LS.dwg_05/09/19 - 8:08 am

LVL PLY TO PLY FASTENING SCHEDULE:

- 1.A - (2) PLY UP TO AND INCLUDING 11 7/8" TALL; FASTEN PLYS W/ (2) ROWS 16D NAILS AT 12" O.C.
- 2.A - (2) PLY 14" TO AND 18" TALL (INCLUSIVE); FASTEN PLYS W/ (3) ROWS 16D NAILS AT 12" O.C.
- 3.A - (2) PLY 20" TALL AND OVER; FASTEN PLYS W/ (4) ROWS 16D NAILS AT 12" O.C.
- 4.A - (3) PLY UP TO AND INCLUDING 11 7/8" TALL; FASTEN PLYS W/ (2) ROWS 16D NAILS AT 12" O.C. FROM EACH SIDE
- 5.A - (3) PLY 14" TO AND 18" TALL (INCLUSIVE); FASTEN PLYS W/ (3) ROWS 16D NAILS AT 12" O.C. FROM EACH SIDE
- 6.A - (3) PLY 20" TALL AND OVER; FASTEN PLYS W/ (4) ROWS 16D NAILS AT 12" O.C. FROM EACH SIDE

FIRST FLOOR BEAM/HEADER SCHEDULE

IDENTIFIER	DESCRIPTION	LENGTH	OPTIONS	ENG. NUM.	REMARKS
B103	BEAM STEEL - W12X14 IN 2X4 SILL	22'-4"	ELA,ELBELK	1034	
B105	BEAM STEEL - W12X14	22'-4"	ELA,ELBELK	1034	
B111	BEAM STEEL - W10X12	30'-0"	ELA,ELBELK	1033	
B112-3	LVL - 04-04	17'-11 1/2"		1004	4.A. FIELD INSTALLED
PF101-2	LVL - 11-04	22'-2"	6CB, 6CF, FBA, FCA	1074	1.A. FIELD INSTALLED
PF105-3	LVL - 16	18'-5"		1047/1049	5.A. FIELD INSTALLED

FIRST FLOOR JACK SCHEDULE

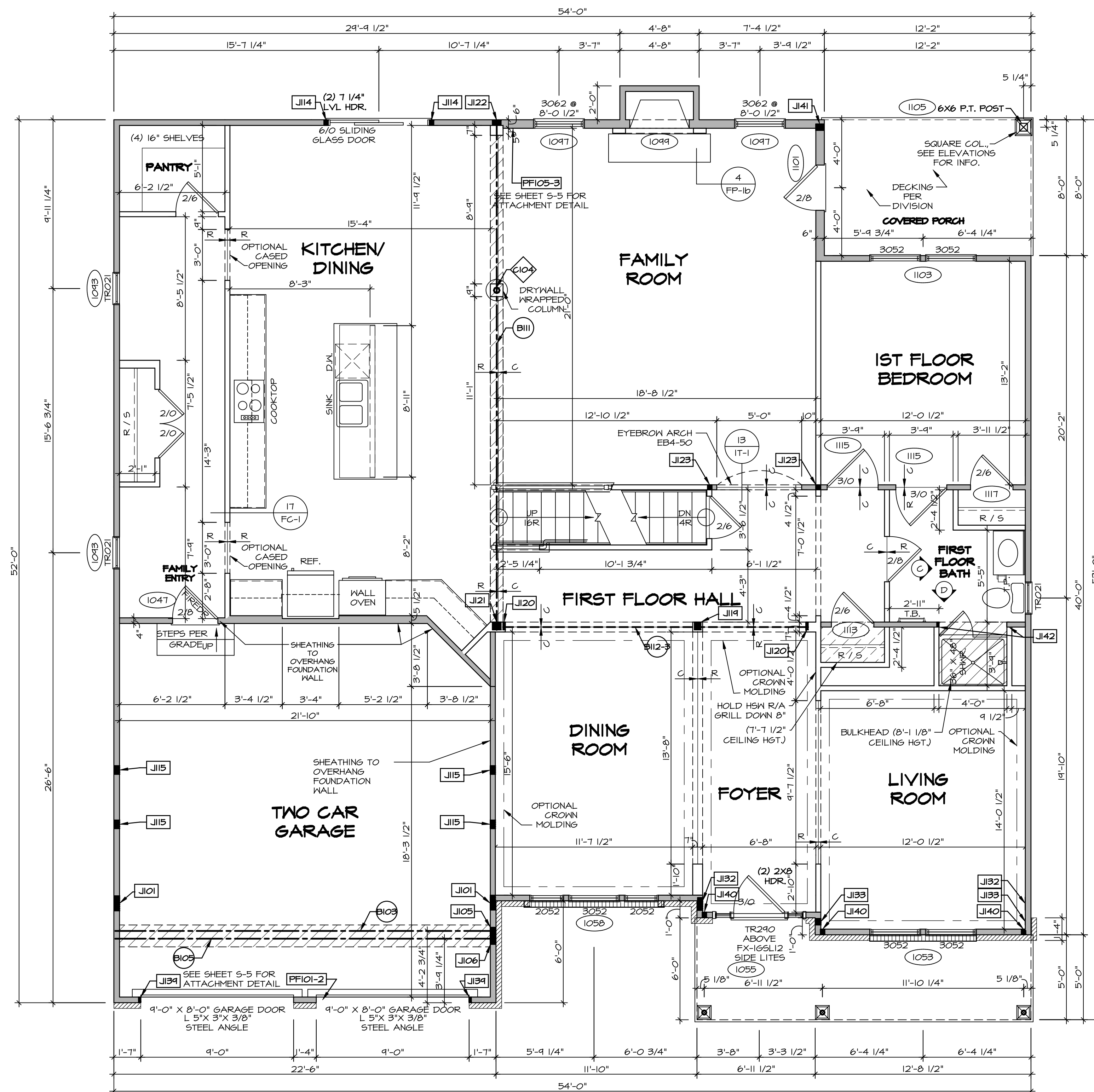
IDENTIFIER	DESCRIPTION	OPTIONS	ENG. NUM.	REMARKS
J101	JACK - (1) 2X4 SPP#1		2014	
J105	JACK - (3) 2X4 SPP STUD GRADE	ELA,ELBELK	1034	
J106	JACK - (5) 2X4 SPP STUD GRADE	ELA,ELBELK	1034	
J114	JACK - (2) 2X4 SPP STUD GRADE	ELA,ELBELK	1045	
J115	JACK - (4) 2X4 SPP STUD GRADE	ELA,ELBELK	1007	
J119	JACK - (3) 2X6 SPP STUD GRADE		1114	
J120	JACK - (2) 2X6 SPP STUD GRADE		1033	
J121	JACK - (4) 2X6 SPP STUD GRADE		1033	
J122	JACK - (4) 2X4 SPP STUD GRADE		1033	
J123	JACK - (2) 2X4 SPP STUD GRADE		1013	
J132	JACK - (6) 2X4 SPP#1	ELB	2014	
J133	JACK - (3) 2X4 SPP#1	ELBELK	2014	
J134	JACK - 2X4 SPP STUD GRADE	6CB,6CF	1074	
J140	JACK - (2) 2X4 SPP STUD GRADE		1070	
J141	JACK - (3) 2X6 SPP STUD GRADE		1105	
J142	JACK - 2X4 SPP STUD GRADE		1111	

FLOOR PLAN NOTES

- ALL HEADERS ARE (2) 2x6 W/ 2x4 WALLS OR (3) 2x6 W/ 2x6 WALLS, UNLESS OTHERWISE NOTED.
- ALL HEADERS TO HAVE (1) 2x4 OR 2x6 JACK AND KING STUD EACH END, UNLESS OTHERWISE NOTED.
- ALL EXTERIOR WALLS TO BE 4" W/ OSB OR 3 1/2" W/ T-PLY; ALL INTERIOR WALLS TO BE 3 1/2", UNLESS OTHERWISE NOTED.
- HATCHED AREAS INDICATE DROPPED CEILINGS. ALL DROPPED CEILINGS ARE 12" UNLESS OTHERWISE NOTED.
- SEE "BRACED WALL PANEL DETAIL SHEET" FOR SPECIAL WALL FRAMING LOCATIONS AND HEADER SIZES, IF APPLICABLE.
- SEE STANDARD DETAIL CATEGORY "IT" SHEET(S) FOR INTERIOR TRIM DETAILS.
- SEE ARCHITECTURAL DETAIL SHEET "AD" FOR HOUSE SPECIFIC INTERIOR TRIM OPTION TABLE.
- ALL WINDOWS HAVE 7'-0 1/2" HEADER HEIGHT UNLESS OTHERWISE NOTED.
- ALL HEADERS IN NON-BEARING WALLS SHALL BE A SINGLE FLAT 2X4 OR 2X6 ATTACHED TO CRIPPLES ABOVE, UNLESS OTHERWISE NOTED.

GYPSON NOTES

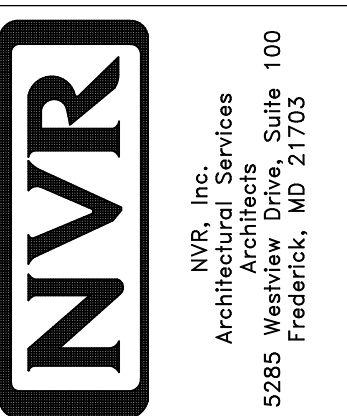
- AT GARAGE:**
GYPSON BOARD AT COMMON WALLS, CEILINGS, BEAM WRAPS AND SUPPORTS PER STANDARD DETAIL FA-1(b) FIRE ASSEMBLIES OR AS REQUIRED BY LOCAL CODE.
- AT STAIRS:**
1/2" GYPSON BOARD AT UNDERSIDE OF STAIRS AND WALLS IN CLOSET



FIRST FLOOR PLAN
SCALE: 1/4" = 1'-0"

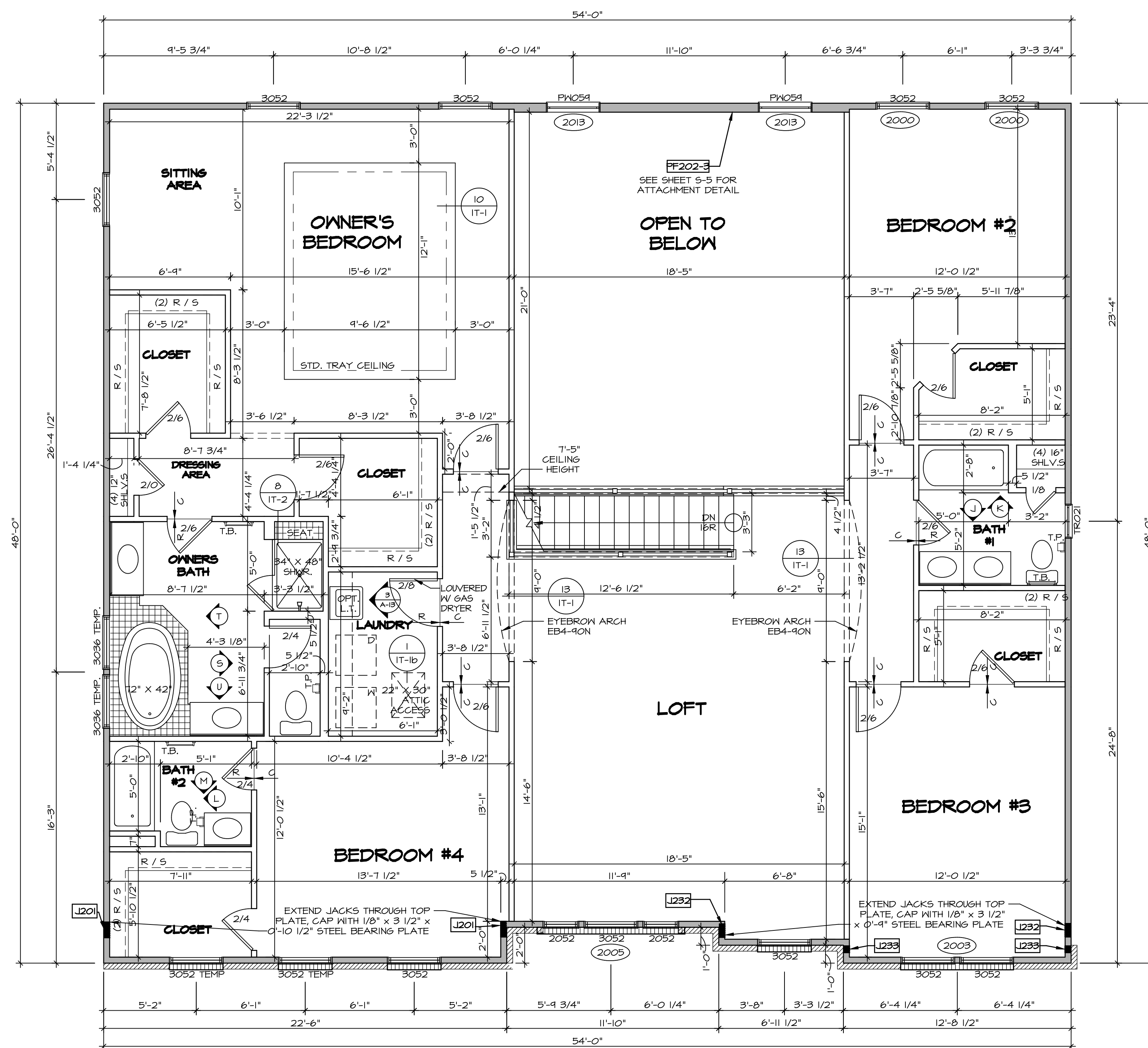
REV. NO. DATE
1 08/08/16 TH - DRAWING ALIGNMENT
2 07/10/17 SLS - T-PLY CONVERSION PROJECT

NVR, Inc., owner, expressly reserves its copyright in these plans. These plans are not to be reproduced, changed, copied, or otherwise used in any way without the written consent of NVR, Inc.



SET NO. VRS00
VERSION 01
DRAWN BY
DATE:
OPTION

MODEL VERSAILLES
DRAWING TITLE FIRST FLOOR PLAN
OPTION DESCRIPTION
A-7
39



SECOND FLOOR JACK SCHEDULE			
IDENTIFIER	DESCRIPTION	ENG. NUM.	REMARKS
J201	JACK - (7) 2X4 5P#1	2014	EXTEND THROUGH TOP PLATE W/ STEEL BEARING PLATE 1/8" x 3 1/2" x 4"
J232	JACK - (6) 2X4 5P#1	2014	EXTEND THROUGH TOP PLATE W/ STEEL BEARING PLATE 1/8" x 3 1/2" x 4"
J233	JACK - (3) 2X4 5P#1	2014	

LVL PLY TO PLY FASTENING SCHEDULE:

1.A - (2) PLY UP TO AND INCLUDING II 7/8" TALL; FASTEN PLYS W/ (2) ROWS 16D NAILS AT 12" O.C.
 2.A - (2) PLY 14" TO AND 18" TALL (INCLUSIVE); FASTEN PLYS W/ (3) ROWS 16D NAILS AT 12" O.C.
 3.A - (2) PLY 20" TALL AND OVER; FASTEN PLYS W/ (4) ROWS 16D NAILS AT 12" O.C.
 4.A - (3) PLY UP TO AND INCLUDING II 7/8" TALL; FASTEN PLYS W/ (2) ROWS 16D NAILS AT 12" O.C. FROM EACH SIDE
 5.A - (3) PLY 14" TO AND 18" TALL (INCLUSIVE); FASTEN PLYS W/ (3) ROWS 16D NAILS AT 12" O.C. FROM EACH SIDE
 6.A - (3) PLY 20" TALL AND OVER; FASTEN PLYS W/ (4) ROWS 16D NAILS AT 12" O.C. FROM EACH SIDE

SECOND FLOOR BEAM/HEADER SCHEDULE			
IDENTIFIER	DESCRIPTION	LENGTH	OPTIONS
FF202-3	LVL - II-04	18'-5"	2013 4.A. PORTAL FRAME

- FLOOR PLAN NOTES**
- ALL HEADERS ARE (2) 2x6 W/ 2x4 WALLS OR (3) 2x6 W/ 2x6 WALLS, UNLESS OTHERWISE NOTED.
 - ALL HEADERS TO HAVE (1) 2x4 OR 2x6 JACK AND KING STUD EACH END, UNLESS OTHERWISE NOTED.
 - ALL EXTERIOR WALLS TO BE 4" W/ OSB OR 3 1/2" W/ T-PLY. ALL INTERIOR WALLS TO BE 3 1/2", UNLESS OTHERWISE NOTED.
 - HATCHED AREAS INDICATE DROPPED CEILING. ALL DROPPED CEILING ARE 12' UNLESS OTHERWISE NOTED.
 - SEE "BRACED WALL PANEL DETAIL SHEET" FOR SPECIAL WALL FRAMING LOCATIONS AND HEADER SIZES, IF APPLICABLE.
 - SEE STANDARD DETAIL CATEGORY "IT" SHEET(S) FOR INTERIOR TRIM DETAILS.
 - SEE ARCHITECTURAL DETAIL SHEET "AD" FOR HOUSE SPECIFIC INTERIOR TRIM OPTION TABLE.
 - ALL WINDOWS HAVE 7'-0 1/2" HEADER HEIGHT UNLESS OTHERWISE NOTED.
 - ALL HEADERS IN NON-BEARING WALLS SHALL BE A SINGLE FLAT 2X4 OR 2X6 ATTACHED TO CRIPPLES ABOVE, UNLESS OTHERWISE NOTED.

SECOND FLOOR PLAN
 SCALE: 1/4" = 1'-0"

LEGEND

- BEARING WALL
- NON BEARING WALL
- INDICATES BEARING FROM POINT-LOAD ABOVE JACKS
- BEAM/HEADER
- PAD FOOTING
- STEEL COLUMN
- PORTAL FRAME
- JOIST/TRUSS
- LVL
- ENGINEERING PAGE NUMBER

SEE FC DETAILS FOR FRAMING CONNECTORS

REV. NO. DATE DESCRIPTION

1 08/08/14 DRAINING ALIGNMENT

2 07/11/15 LVL - T-PLY CONVERSION PROJECT

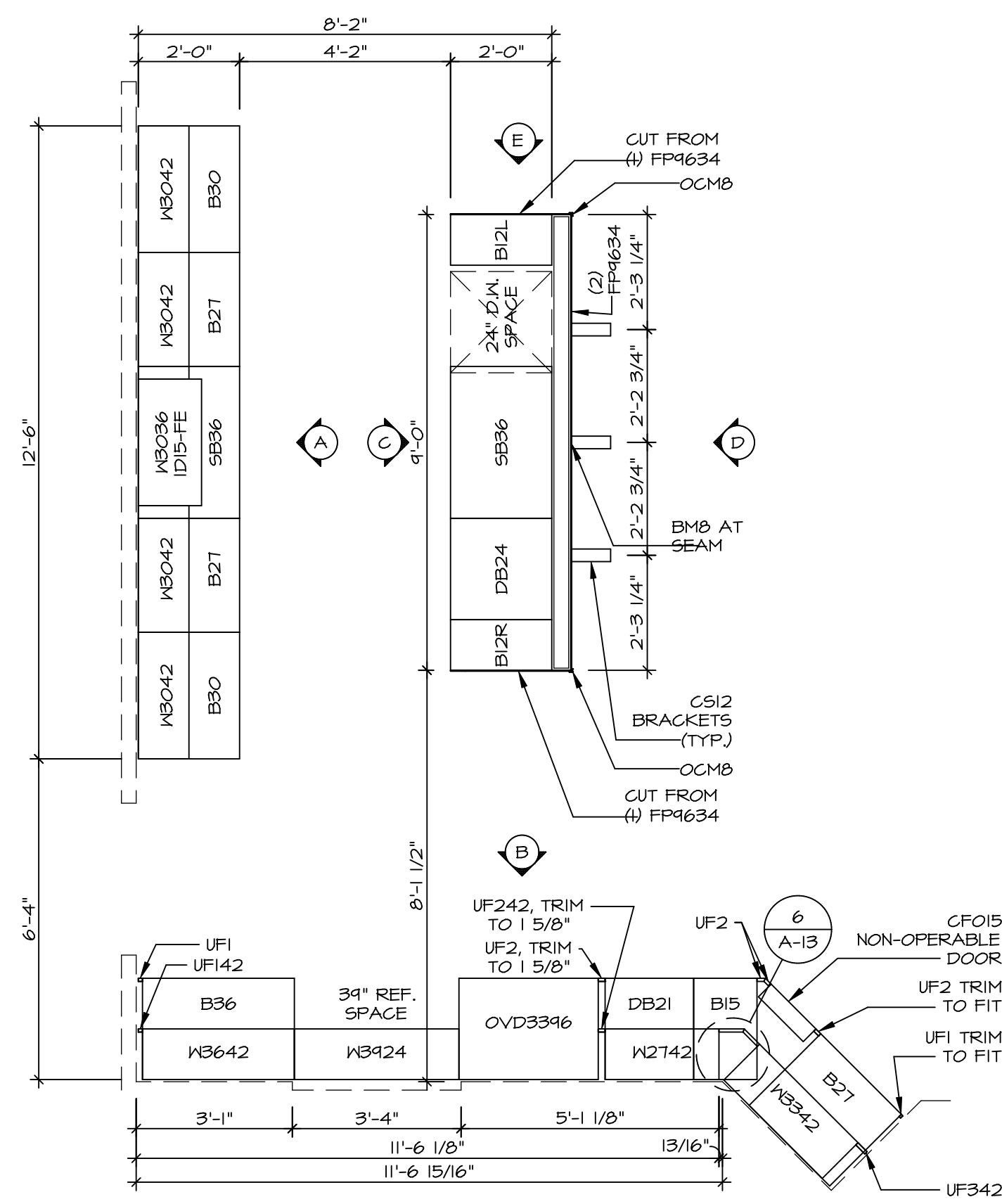
SET NO. VRS00
 VERSION 01
 DRAWN BY
 DATE:
 OPTION

MODEL VERSAILLES
 DRAWING TITLE SECOND FLOOR PLAN
 OPTION DESCRIPTION

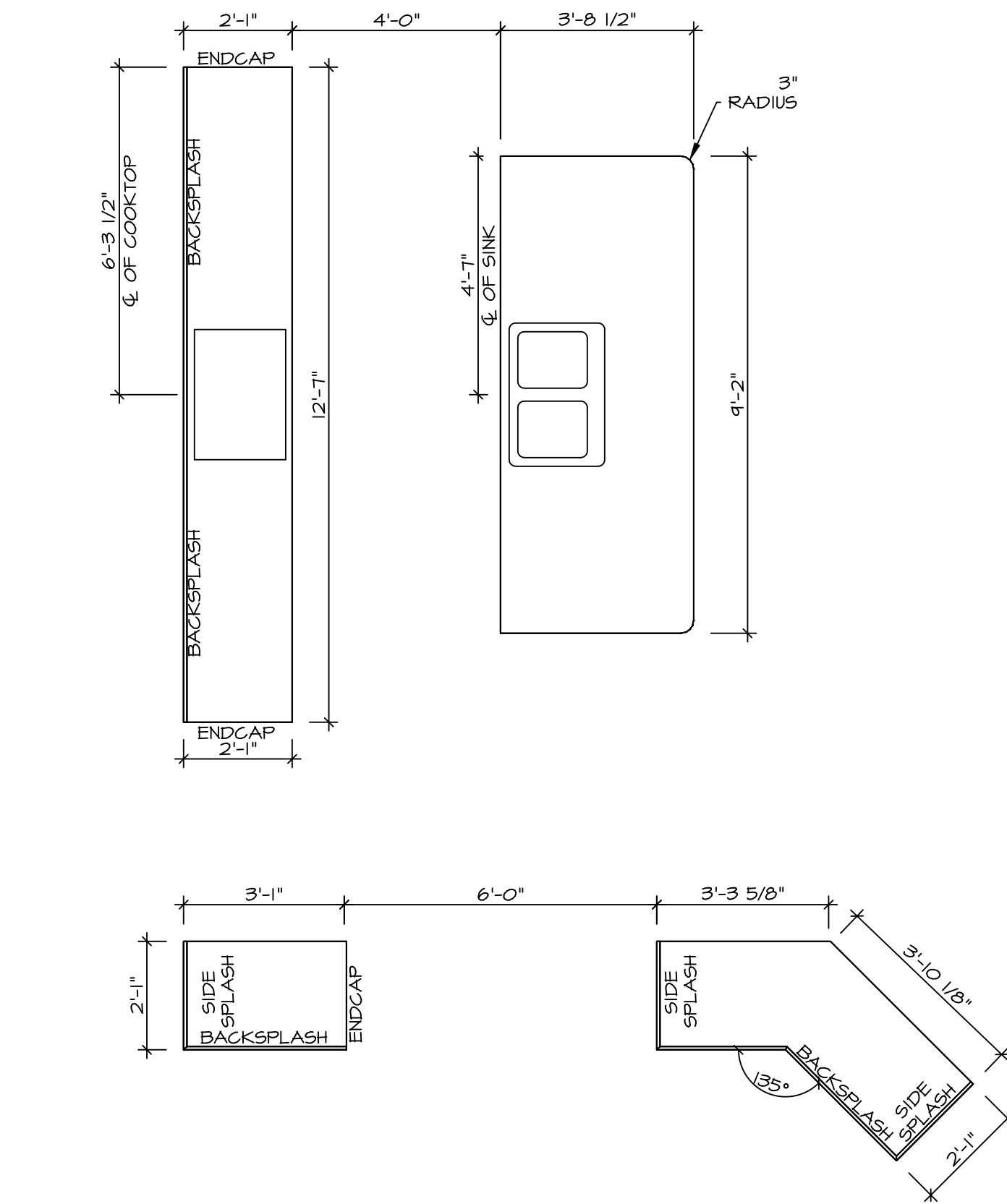
SHEET NO. A-8 42

NVR, Inc. **NVR**
 Architectural Services
 Architects Suite 100
 5285 Westpark Drive
 Frederick, MD 21703

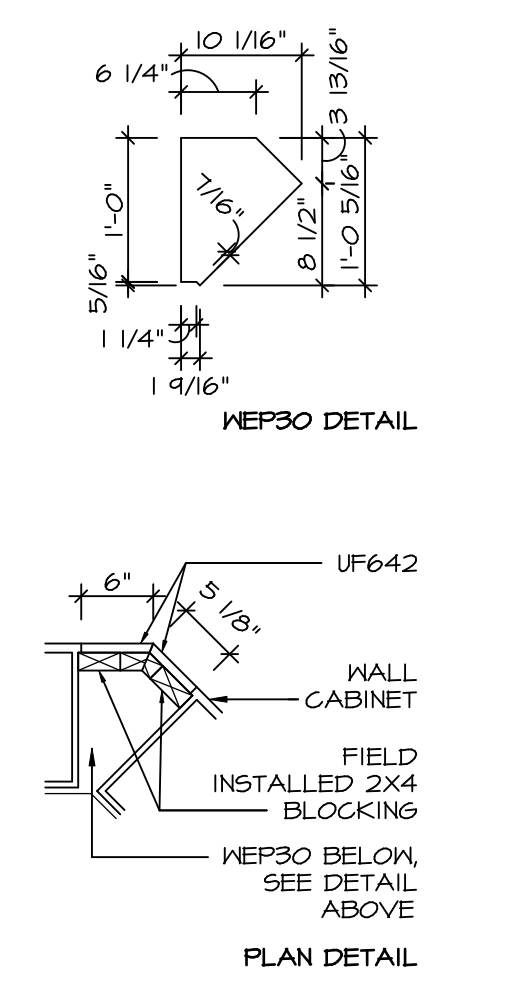
C:\NVR\Solves\VERSAILLES_VRS00_01\DCI-CH-S37\1221868\Sheet\Lot_Specific\42_A-8_PLV2_LS.dwg 05/09/19 - 8:08 am



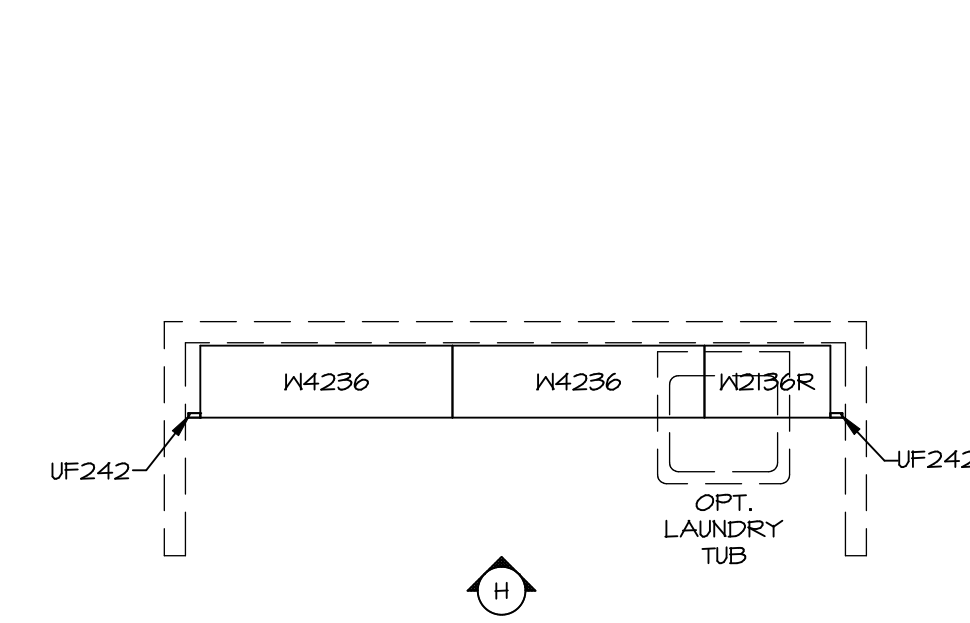
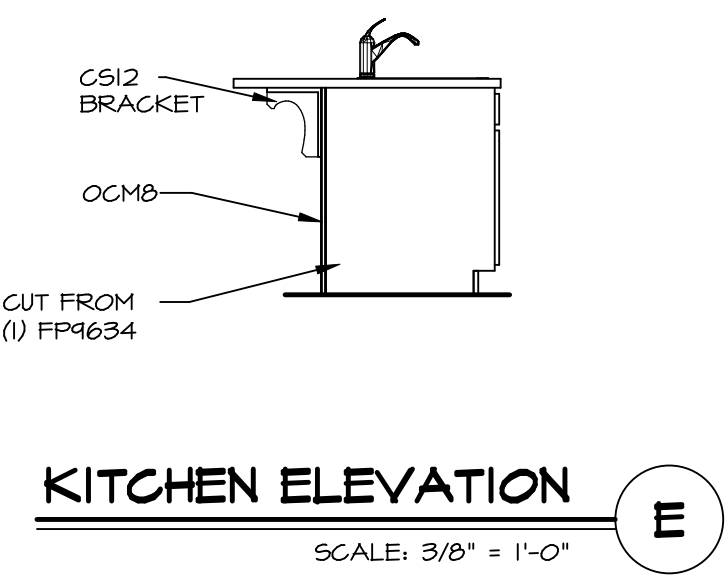
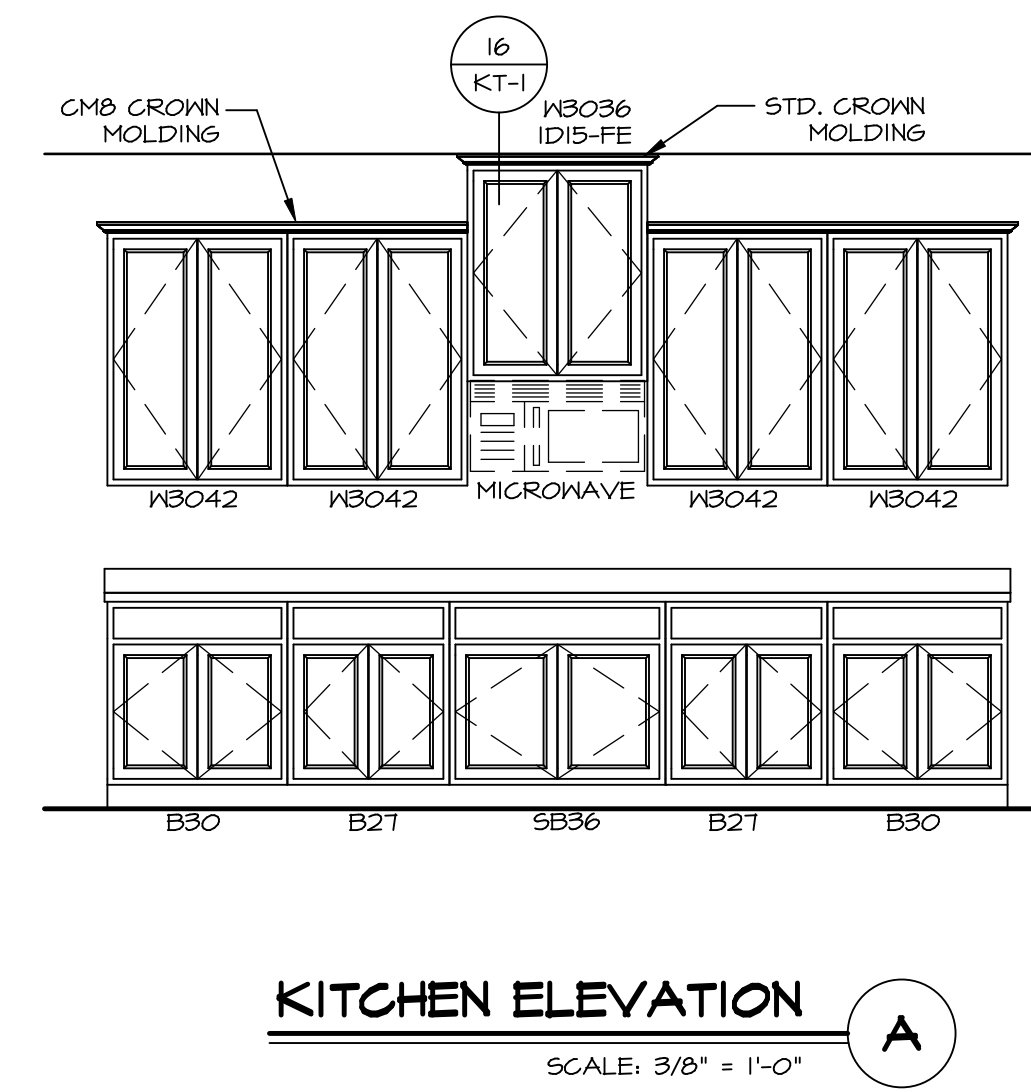
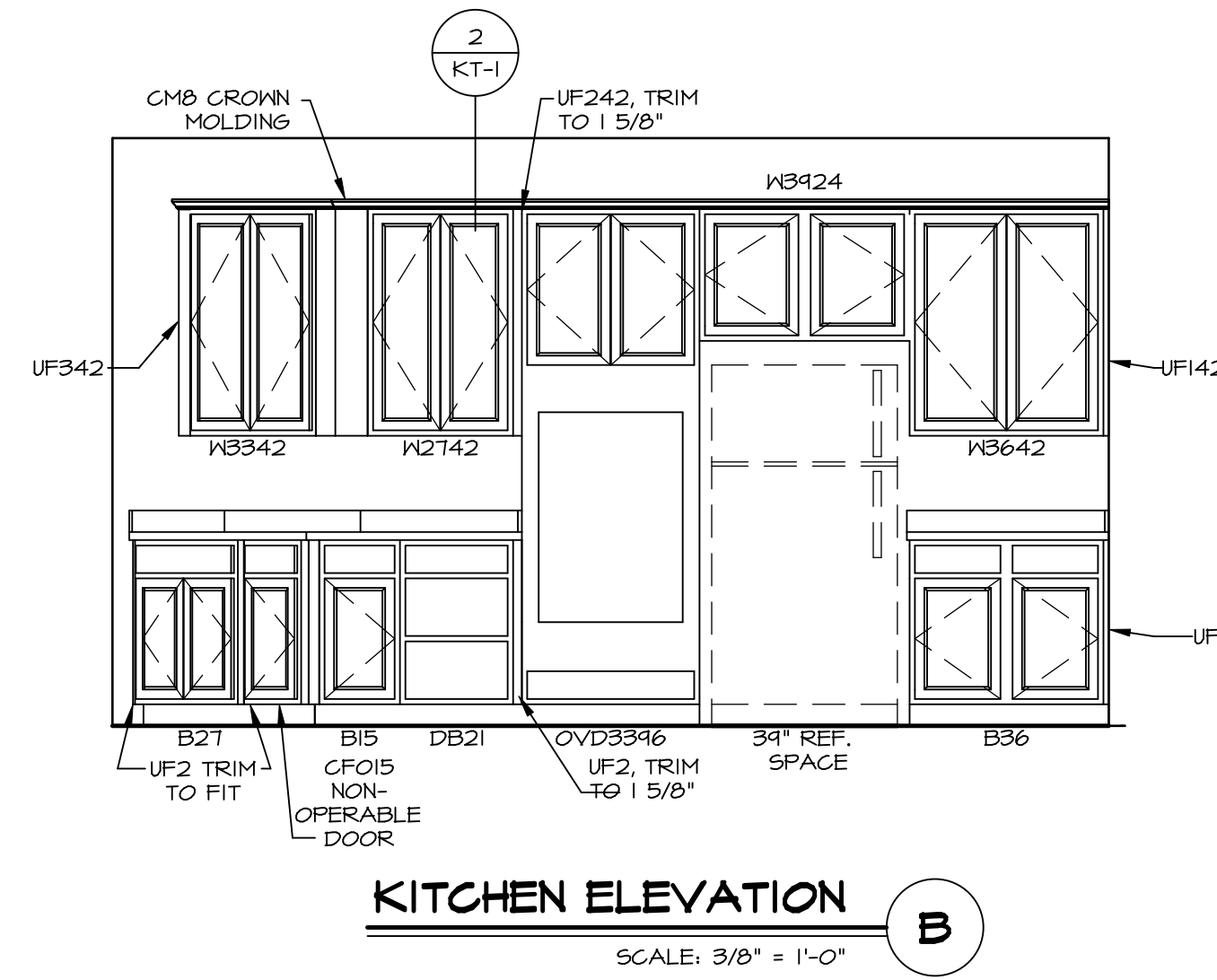
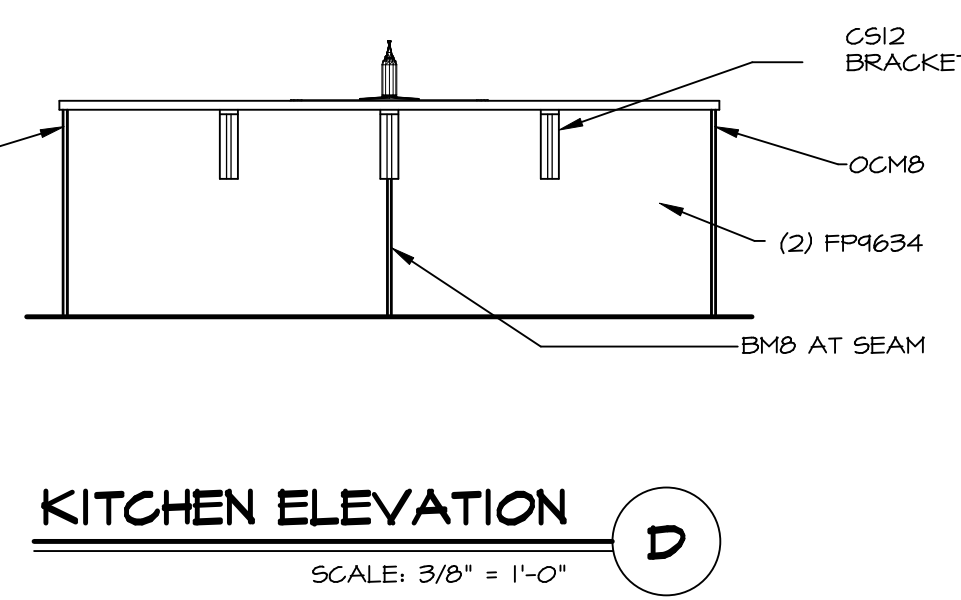
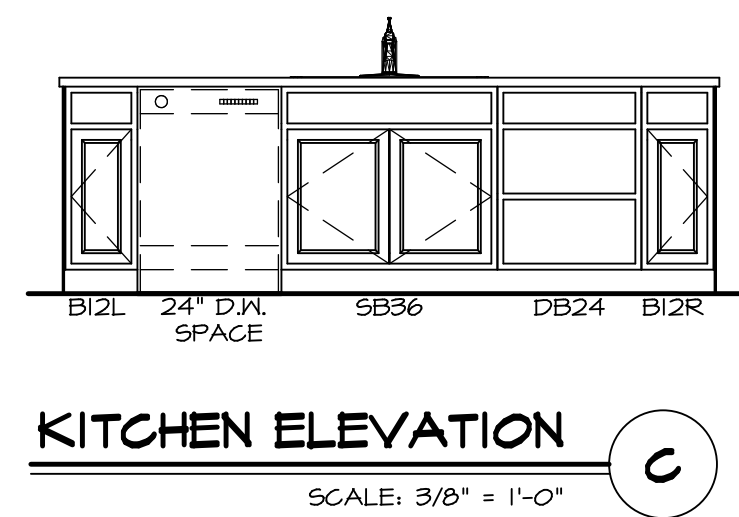
KITCHEN CABINET PLAN / KC - 3286
SCALE: 3/8" = 1'-0" A-13



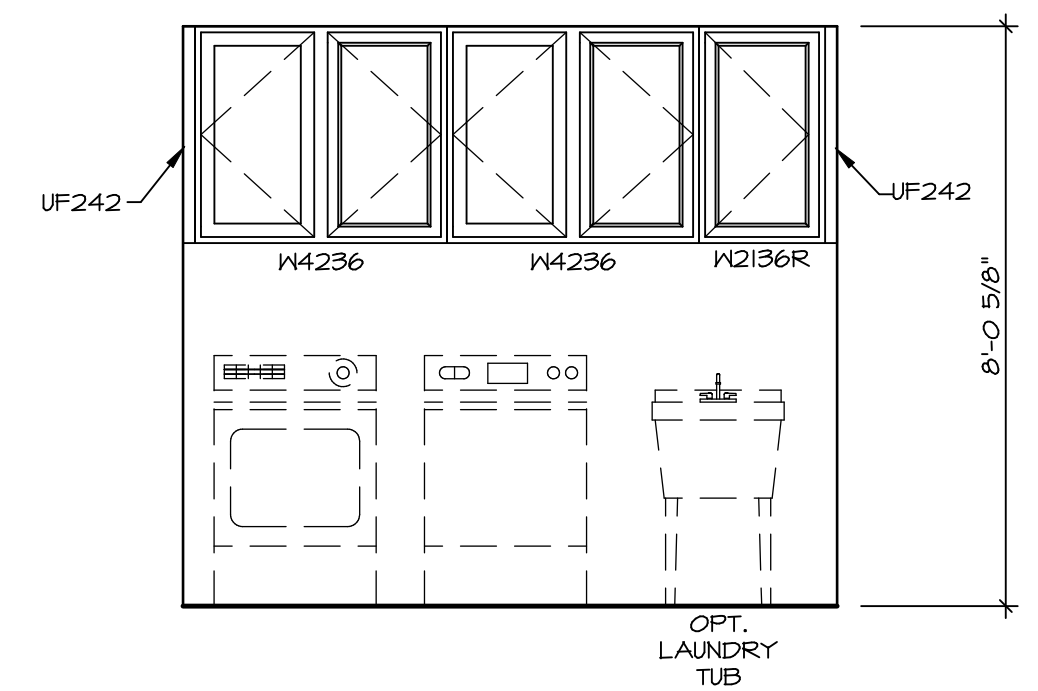
KITCHEN COUNTERTOP PLAN / KC - 3286
SCALE: 3/8" = 1'-0" A-13



TRIM DETAIL
SCALE: 3/4" = 1'-0" A-13

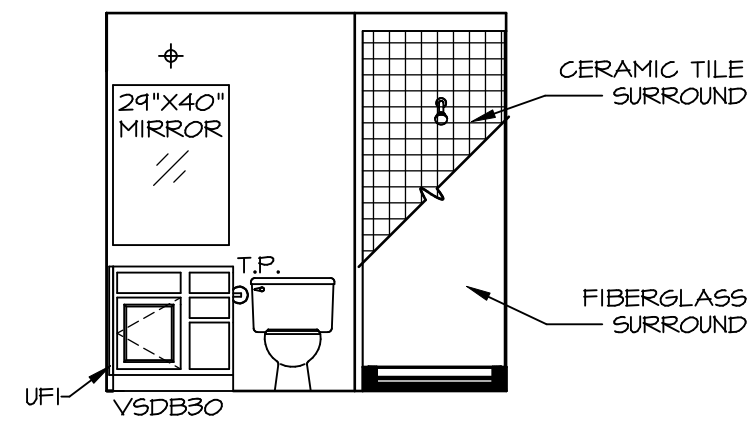


LAUNDRY CABINET PLAN KC - 3288
SCALE: 3/8" = 1'-0" A-13

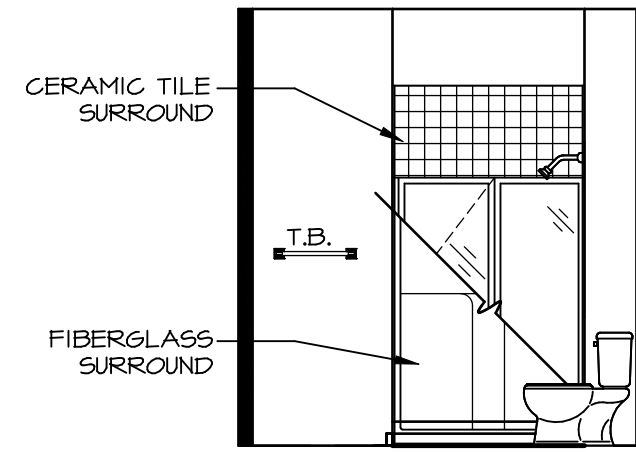


LAUNDRY ELEVATION
SCALE: 3/8" = 1'-0" H

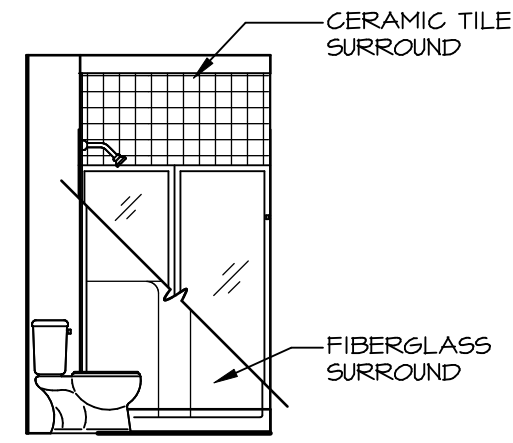
SHEET NO. A-13	MODEL VERSAILLES	DRAWING TITLE KITCHENS	SET NO. VRS00	VERSION 01	DATE:	OPTION
			DRAWN BY			
53	OPTION DESCRIPTION	REVISIONS				
		REV. NO.	DATE	REMARKS		
<p>NVR, Inc., owner, expressly reserves its copyright in these plans. These plans are not to be reproduced, changed, copied, or used in any way without the prior written consent of NVR, Inc.</p> <p>NVR NVR, Inc. Architectural Services 5285 Westpark Drive Frederick, MD 21703</p>						
<p>C:\NVR\Solves\VERSAILLES_VRS00_01\DCY-CH-S377\1221885\Sheet\A-13_KIT_LS.dwg 05/09/19 - 9:09 am</p>						



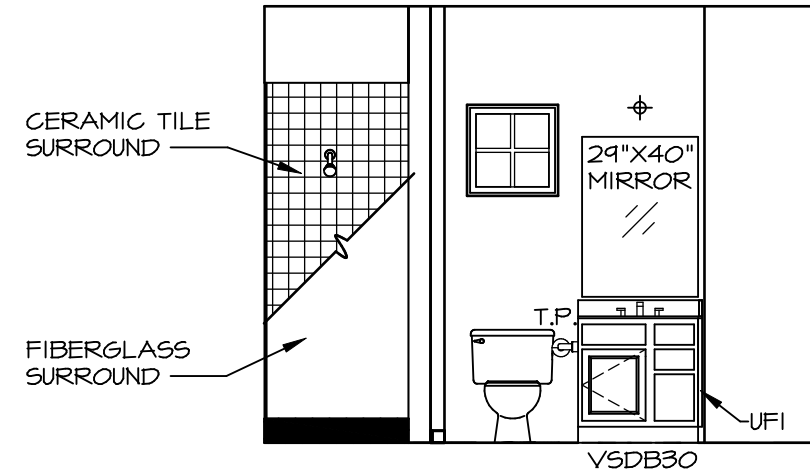
A BASEMENT BATH "AEB"
SCALE: 1/4" = 1'-0"



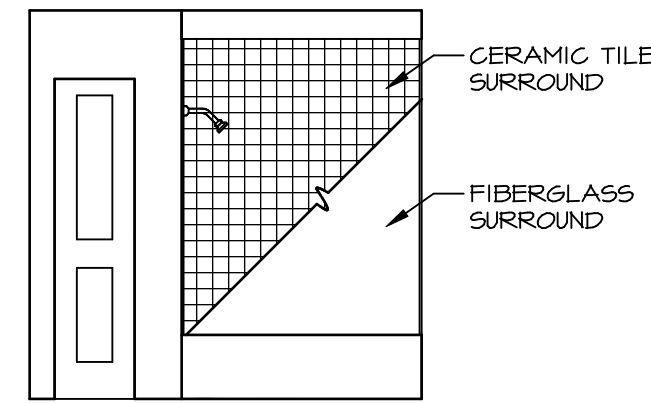
D FIRST FLOOR BATH
SCALE: 1/4" = 1'-0"



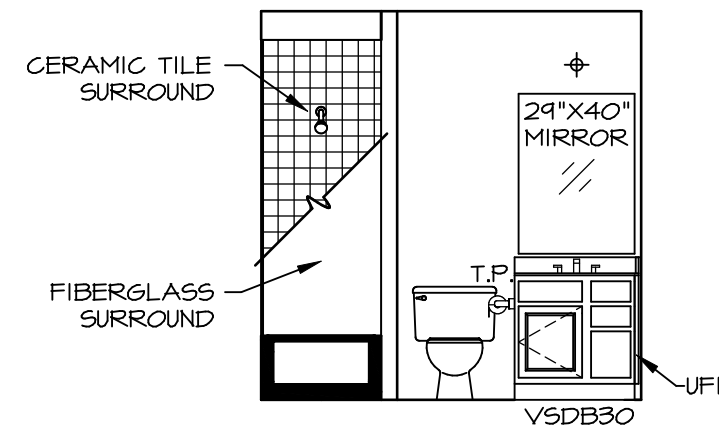
B BASEMENT BATH "AEB"
SCALE: 1/4" = 1'-0"



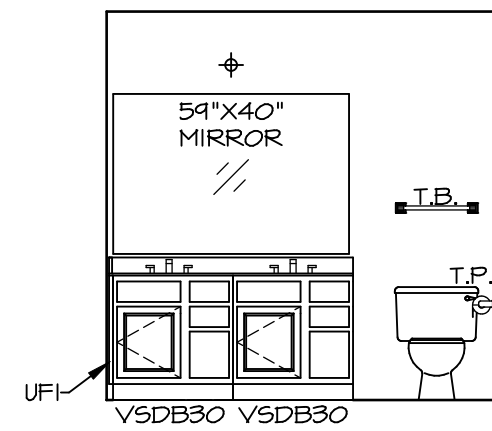
C FIRST FLOOR BATH
SCALE: 1/4" = 1'-0"



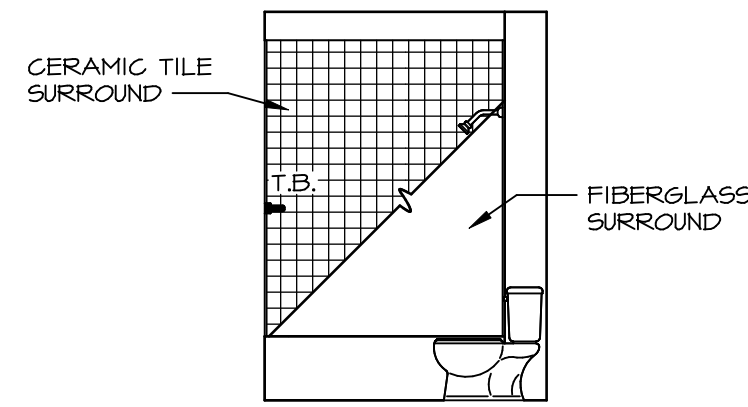
K BATH #1
SCALE: 1/4" = 1'-0"



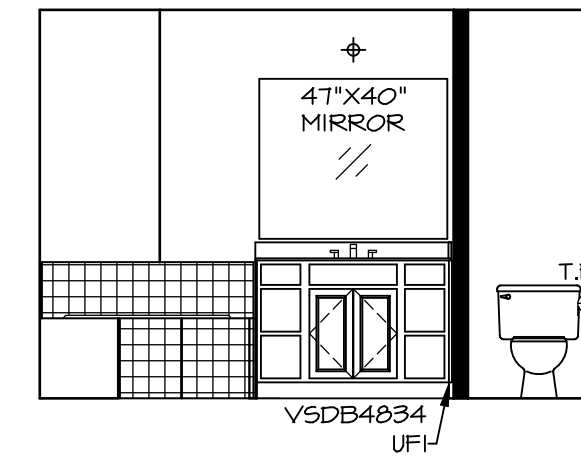
M BATH #2
SCALE: 1/4" = 1'-0"



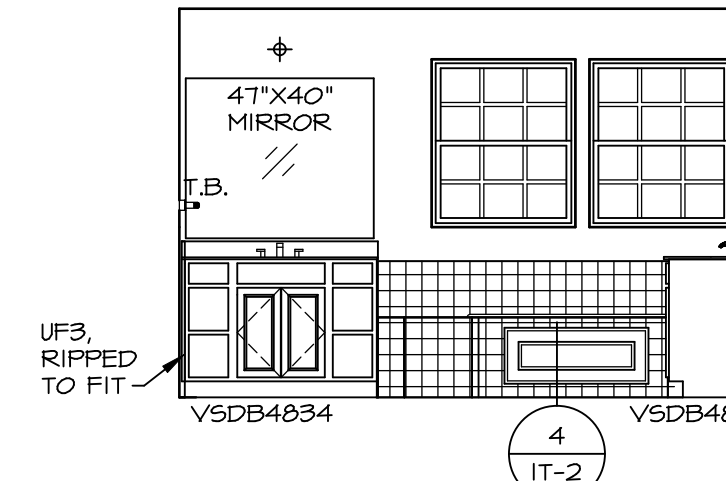
J BATH #1
SCALE: 1/4" = 1'-0"



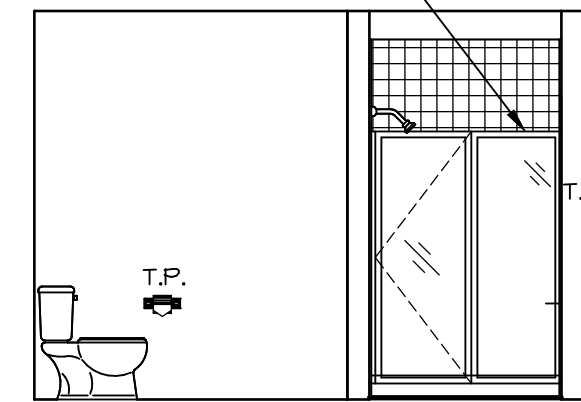
L BATH #2
SCALE: 1/4" = 1'-0"



U OWNER'S BATH ("AME")
SCALE: 1/4" = 1'-0"



T OWNER'S BATH ("AME")
SCALE: 1/4" = 1'-0"



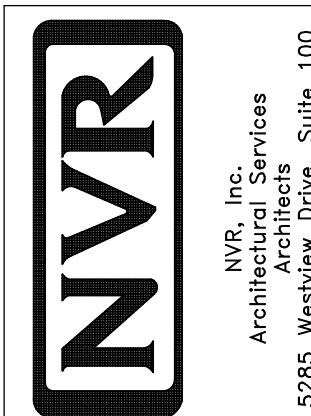
S OWNER'S BATH ("AME")
SCALE: 1/4" = 1'-0"

FRAMED SHOWER DOOR W/ "AMF"
FRAMLESS SHOWER DOOR W/ "AMT"

NOTES:

- TEMPERED GLASS SHOWER ENCLOSURE WITH SWING DOOR OR OPTIONAL SLIDING DOOR BY DIVISION
- TUB ACCESS PANELS PROVIDED AS NEEDED, ALL MATERIALS BY DIVISION REFER TO SHEET IT-2 FOR TUB AND SHOWER DETAILS.
- ALL V5DB24-42 DRAWERS TO BE SET ON RIGHT HAND.
- BATH ELEVATIONS ARE SHOWN PER PLAN.

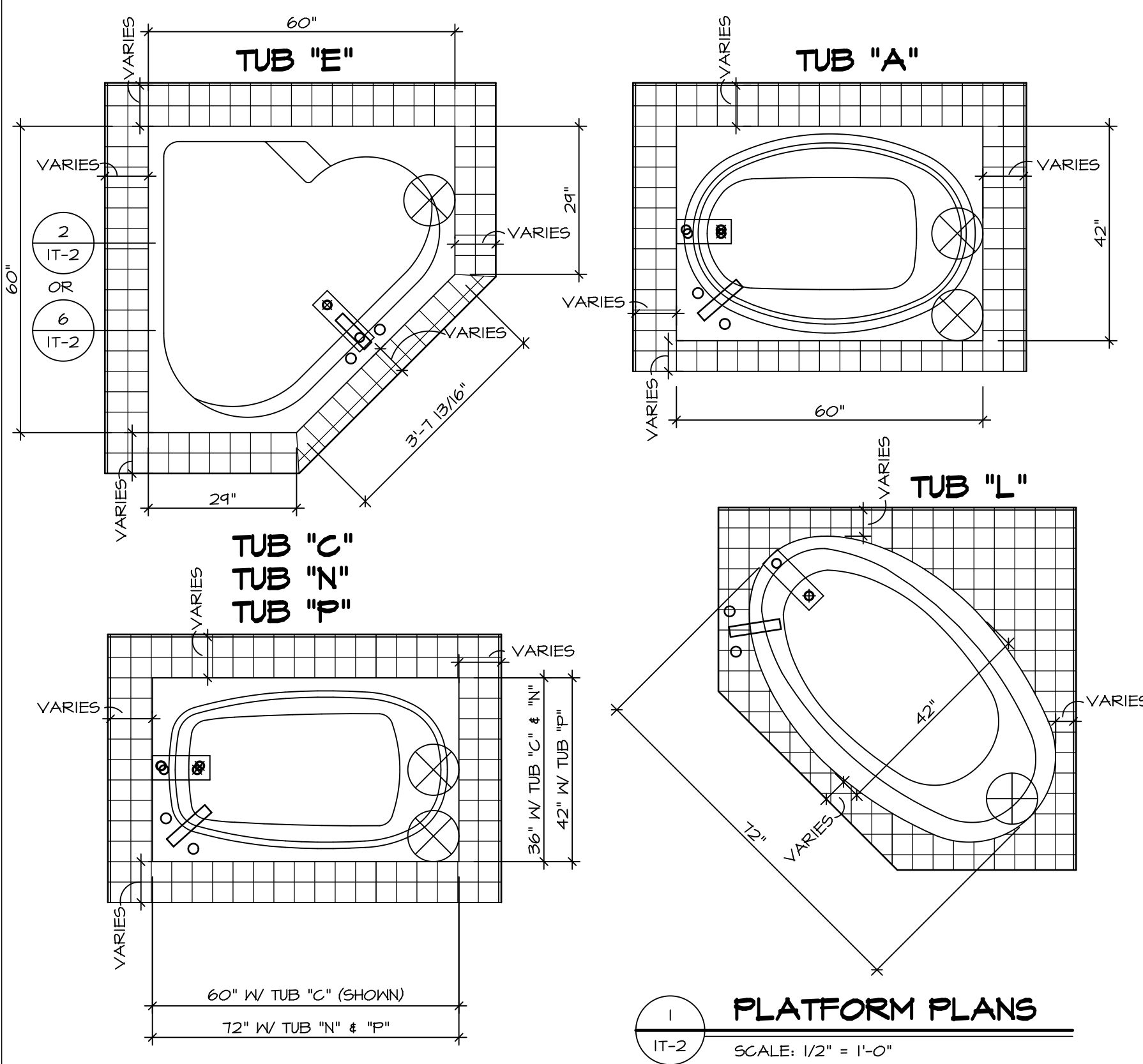
MODEL	VERSAILLES
DRAWING TITLE	BATH ELEVATIONS
SHEET NO.	A-14
OPTION DESCRIPTION	55



NVR, Inc., owner, expressly reserves its copyright in these plans. These plans are not to be reproduced, changed, copied, or otherwise used in any way without the prior written consent of NVR, Inc.

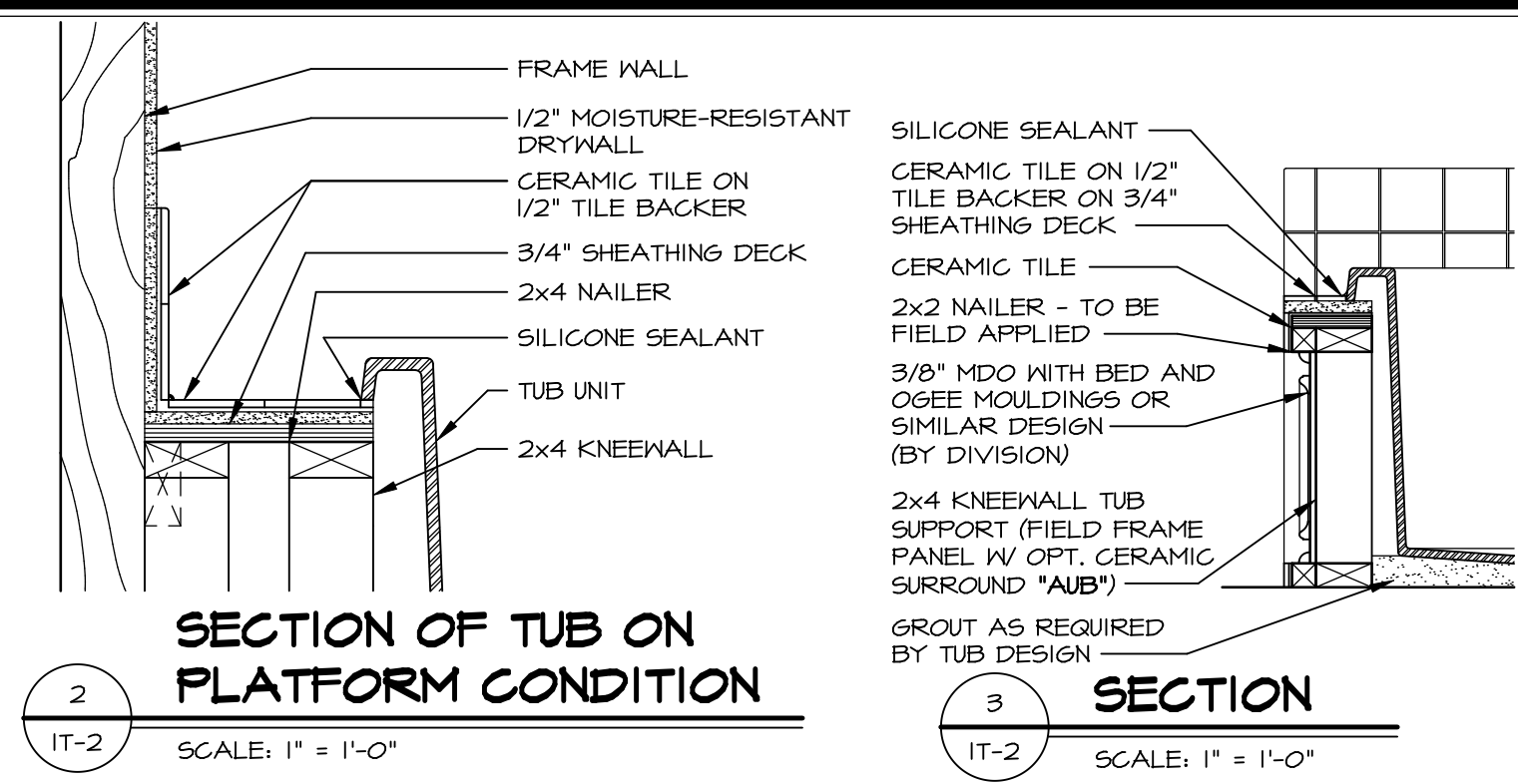
REV. NO.	DATE	REMARKS
1	08/09/16	TH - DRAINING ALIGNMENT

SET NO.	VRS00
VERSION	01
DRAWN BY	
DATE:	
OPTION	

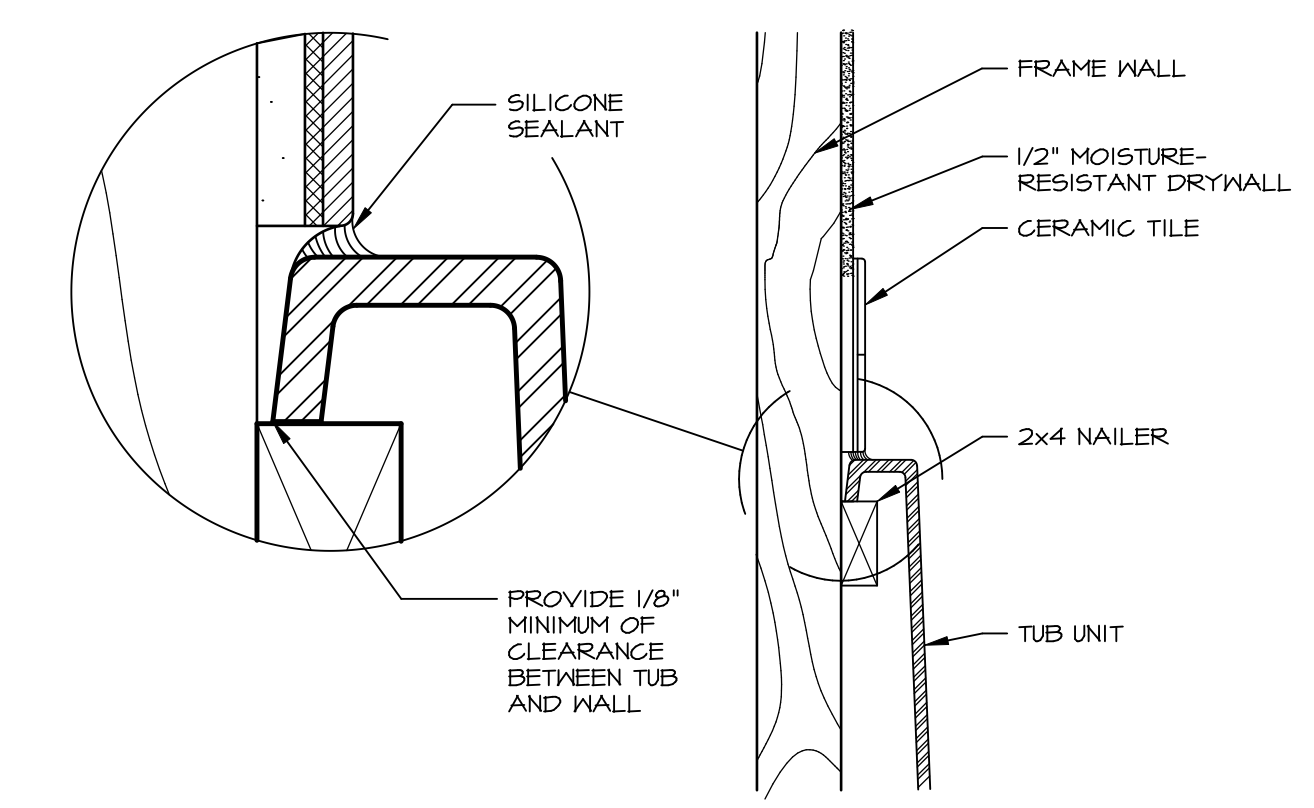


1 PLATFORM PLANS
IT-2 SCALE: 1/2" = 1'-0"

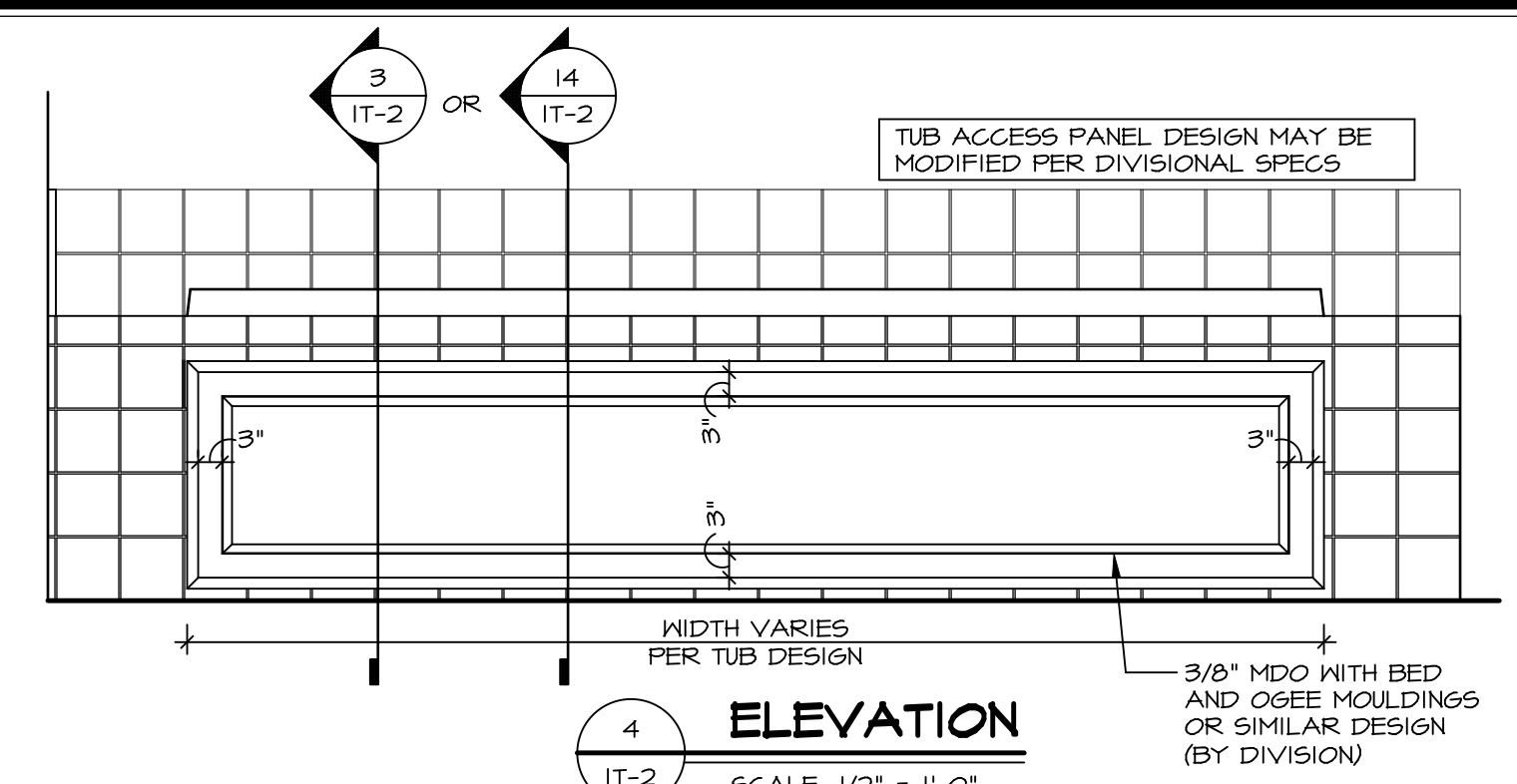
TUB	MANUF.	HEIGHT	WIDTH	LENGTH	TUB DECK PANEL HEIGHT
"A"	KOHLER/STERLING	18 3/4"	42"	60"	17 1/8"
"C"	KOHLER/STERLING	18 3/4"	36"	60"	17 1/8"
"E"	KOHLER/STERLING	19 1/2"	60"	60"	17 7/8"
"L"	KOHLER/STERLING	18 1/2"	42"	72"	16 7/8"
"N"	KOHLER/STERLING	18 3/4"	36"	72"	17 1/8"
"P"	KOHLER/STERLING	18 3/4"	42"	72"	17 1/8"



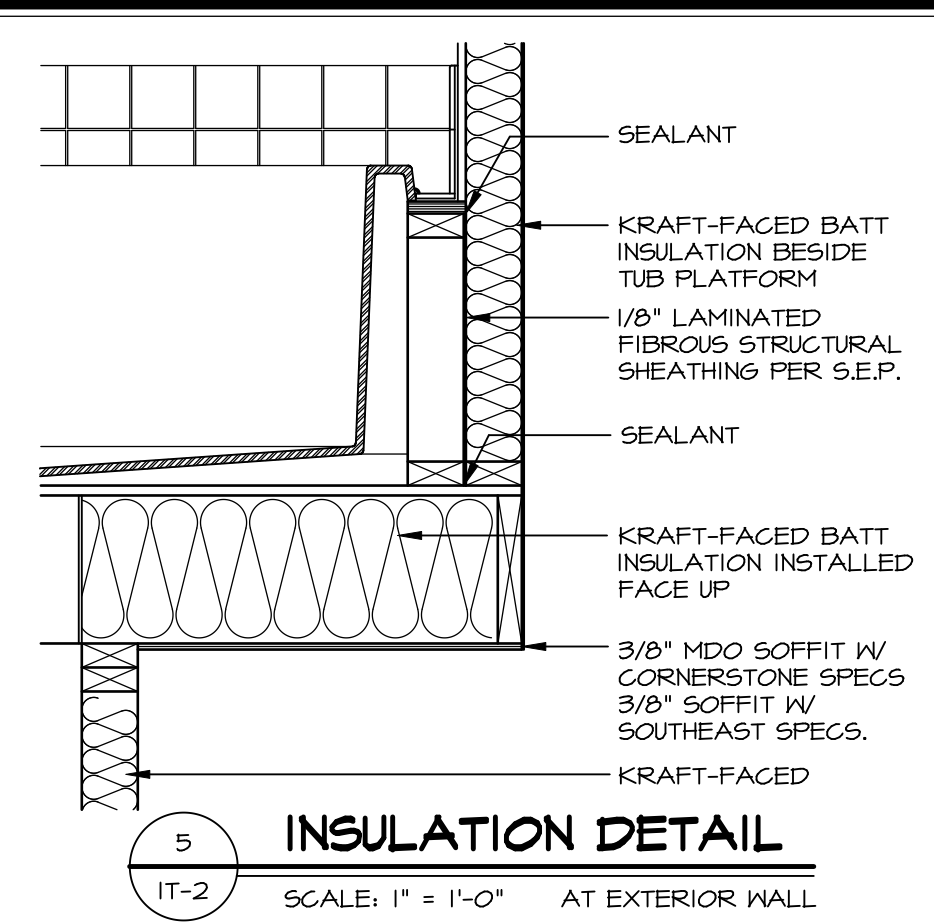
2 SECTION OF TUB ON PLATFORM CONDITION
IT-2 SCALE: 1" = 1'-0"



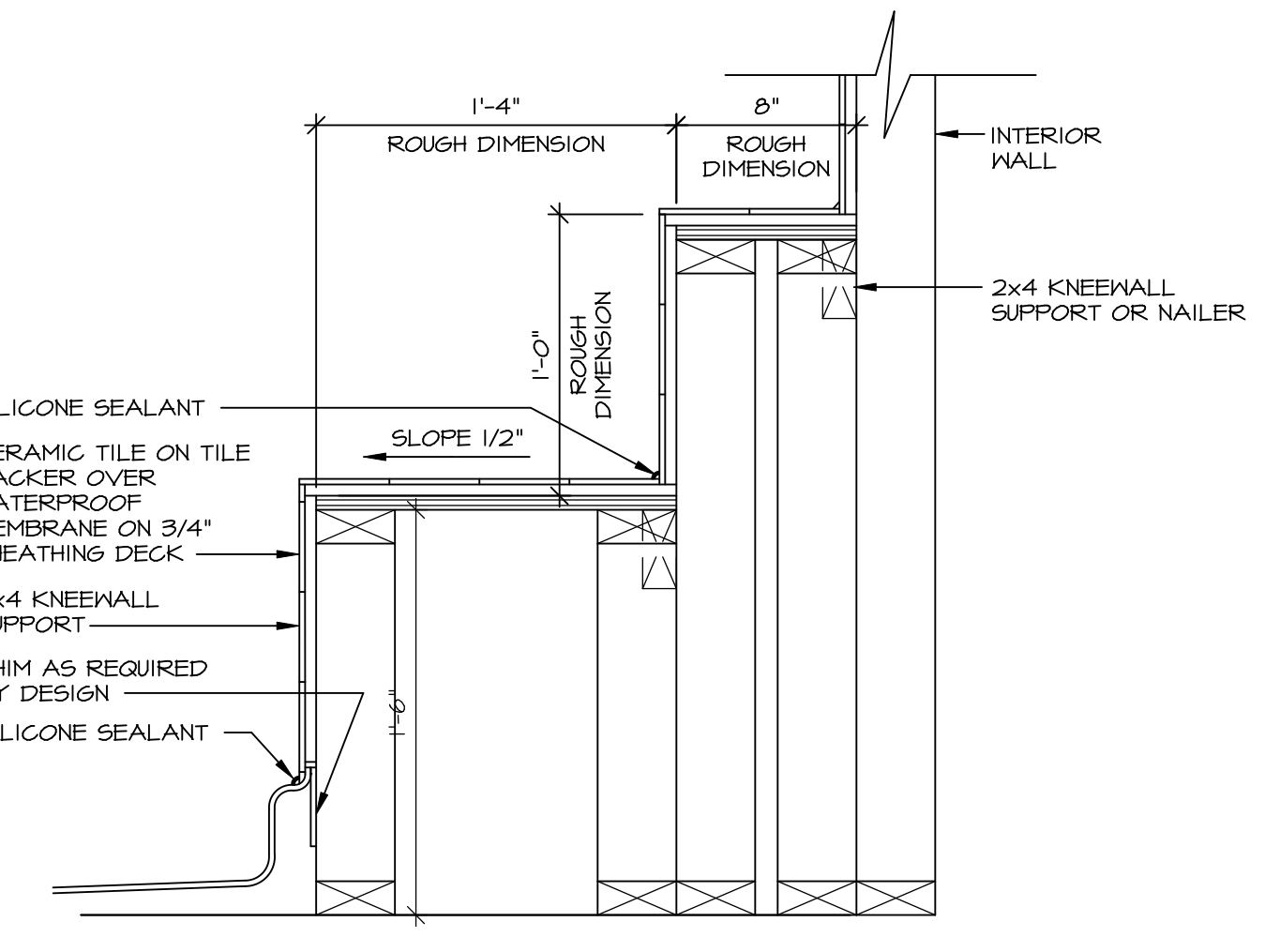
3 SECTION OF TUB TO WALL CONDITION
IT-2 SCALE: 1 1/2" = 1'-0"



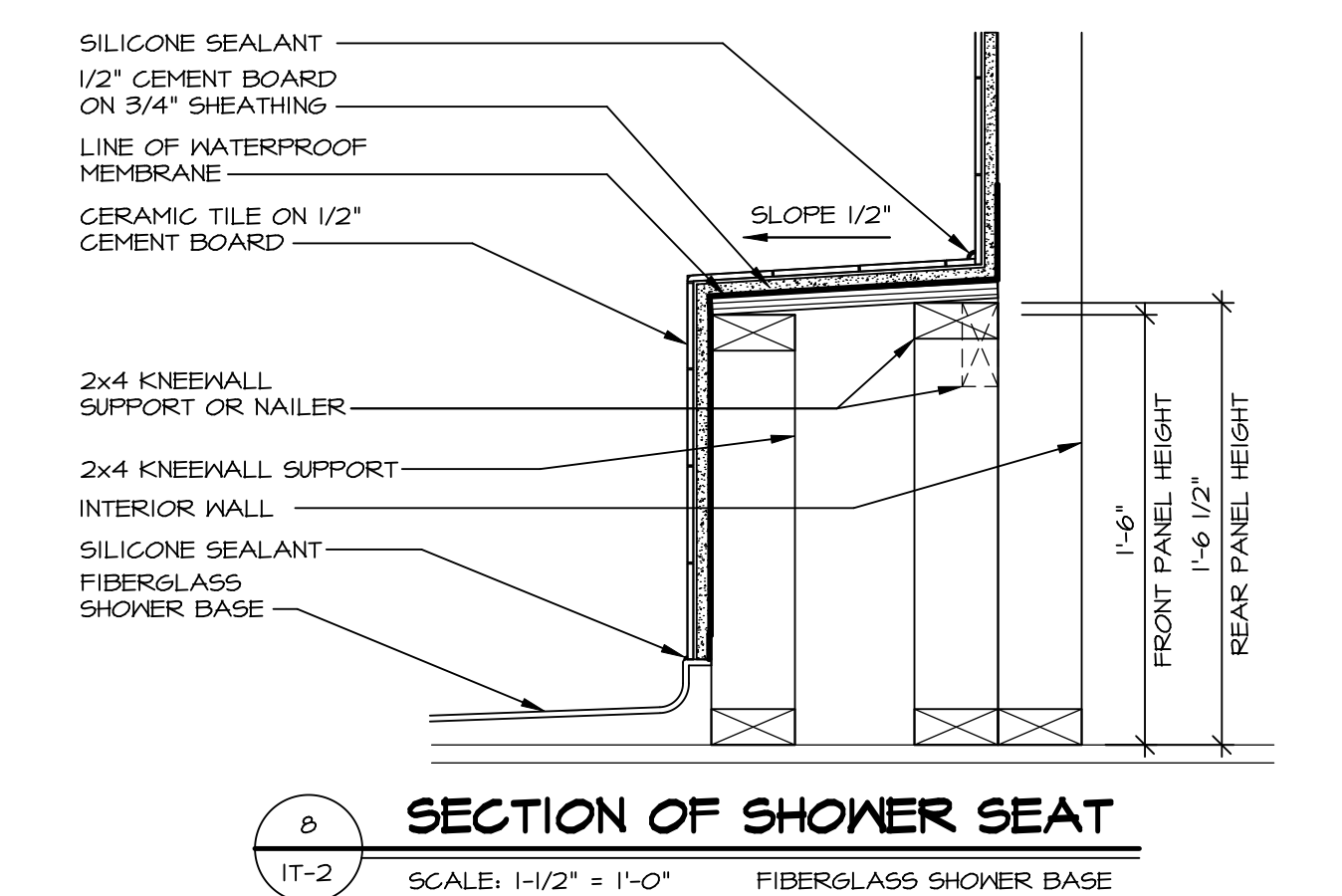
4 ELEVATION
IT-2 SCALE: 1/2" = 1'-0"



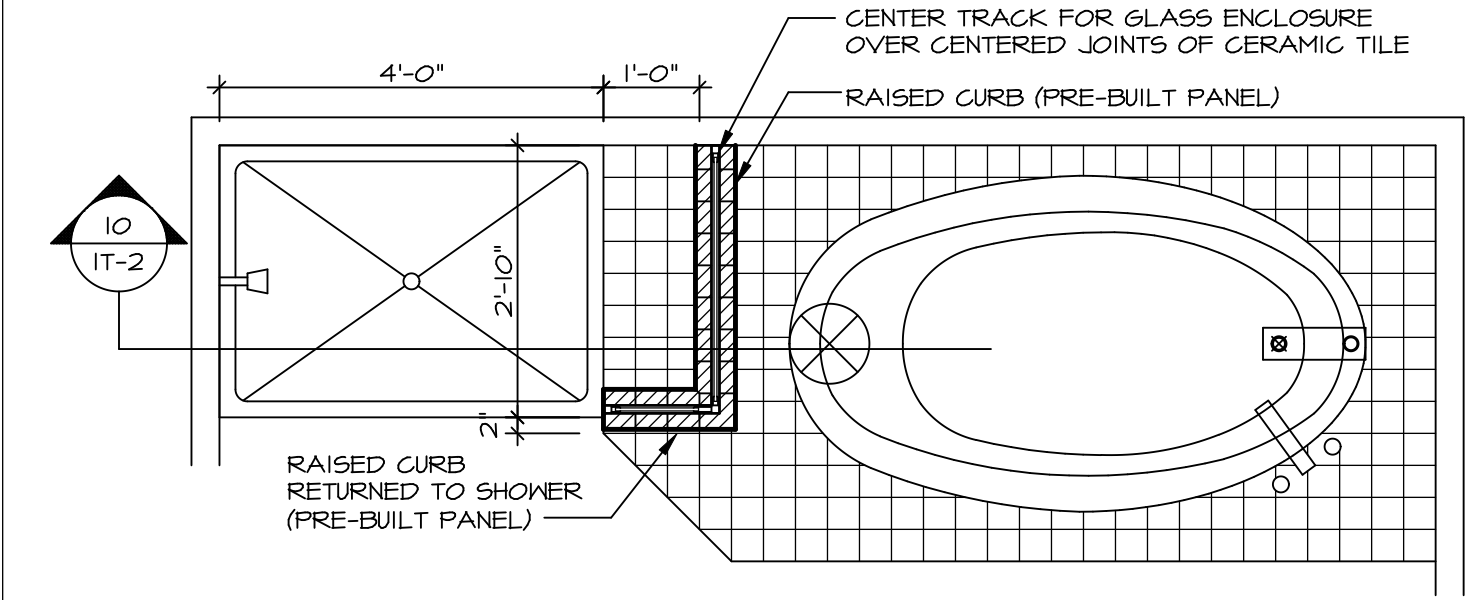
5 INSULATION DETAIL
IT-2 SCALE: 1" = 1'-0" AT EXTERIOR WALL



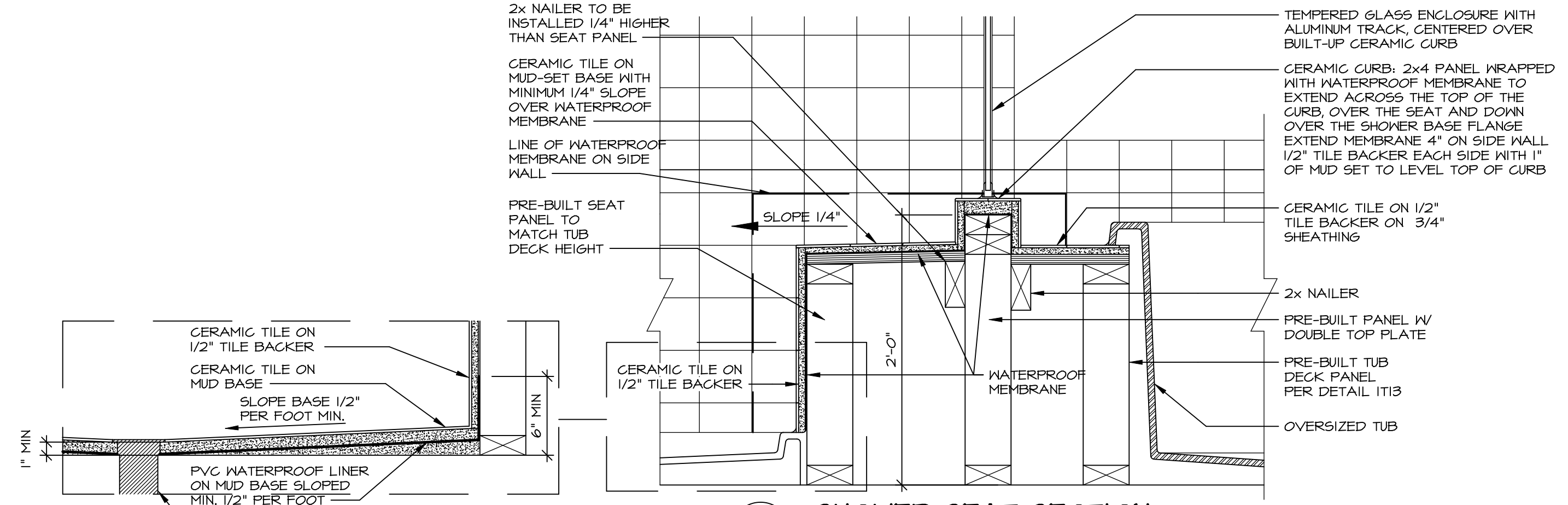
7 SECTION OF SHOWER SEAT AND SHELF
IT-2 SCALE: 1 1/2" = 1'-0"



8 SECTION OF SHOWER SEAT
IT-2 SCALE: 1-1/2" = 1'-0" FIBERGLASS SHOWER BASE



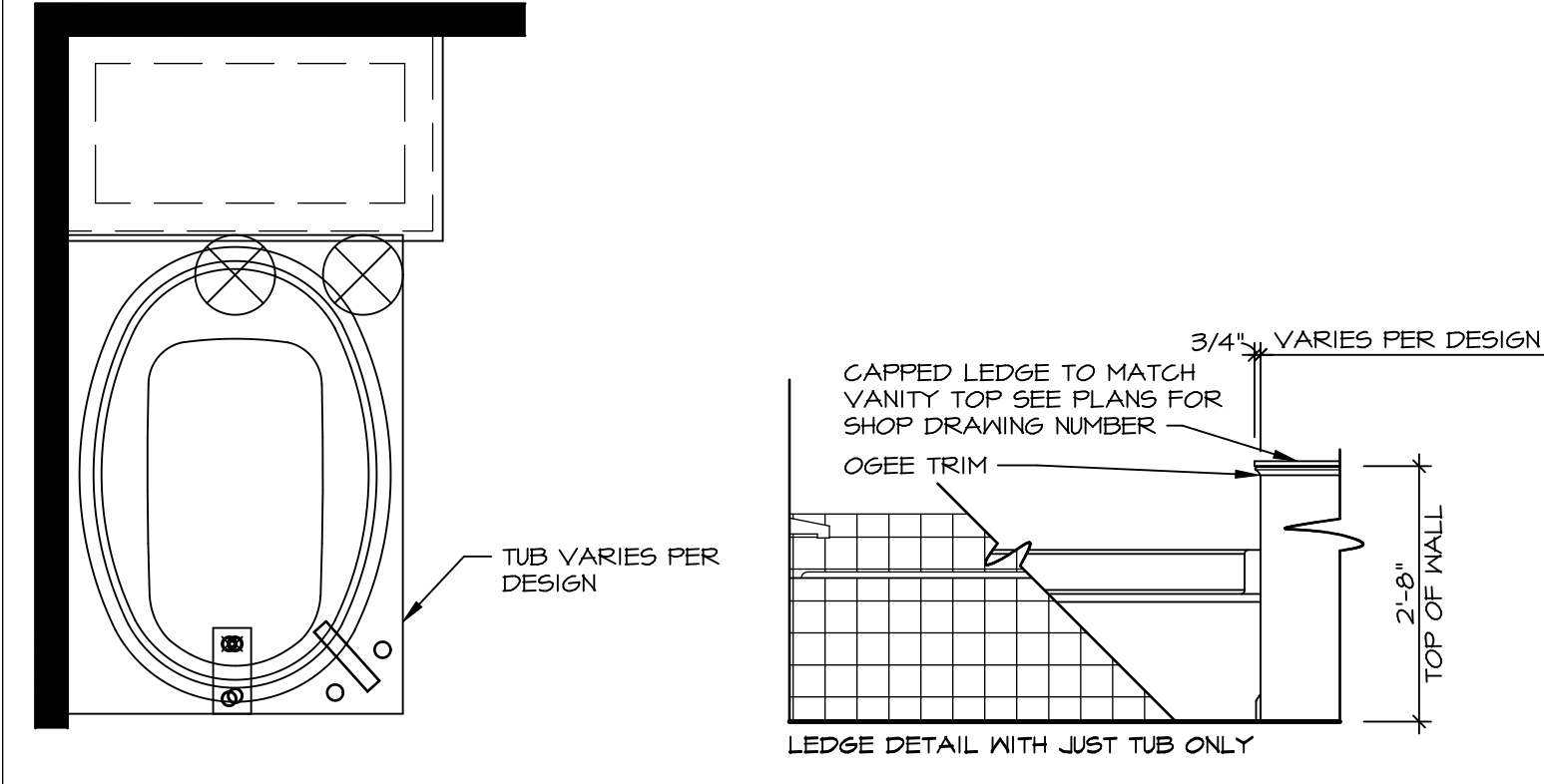
9 SHOWER SEAT PLAN / DETAIL
IT-2 SCALE: 1/2" = 1'-0"



10 SHOWER SEAT SECTION
IT-2 SCALE: 1-1/2" = 1'-0"



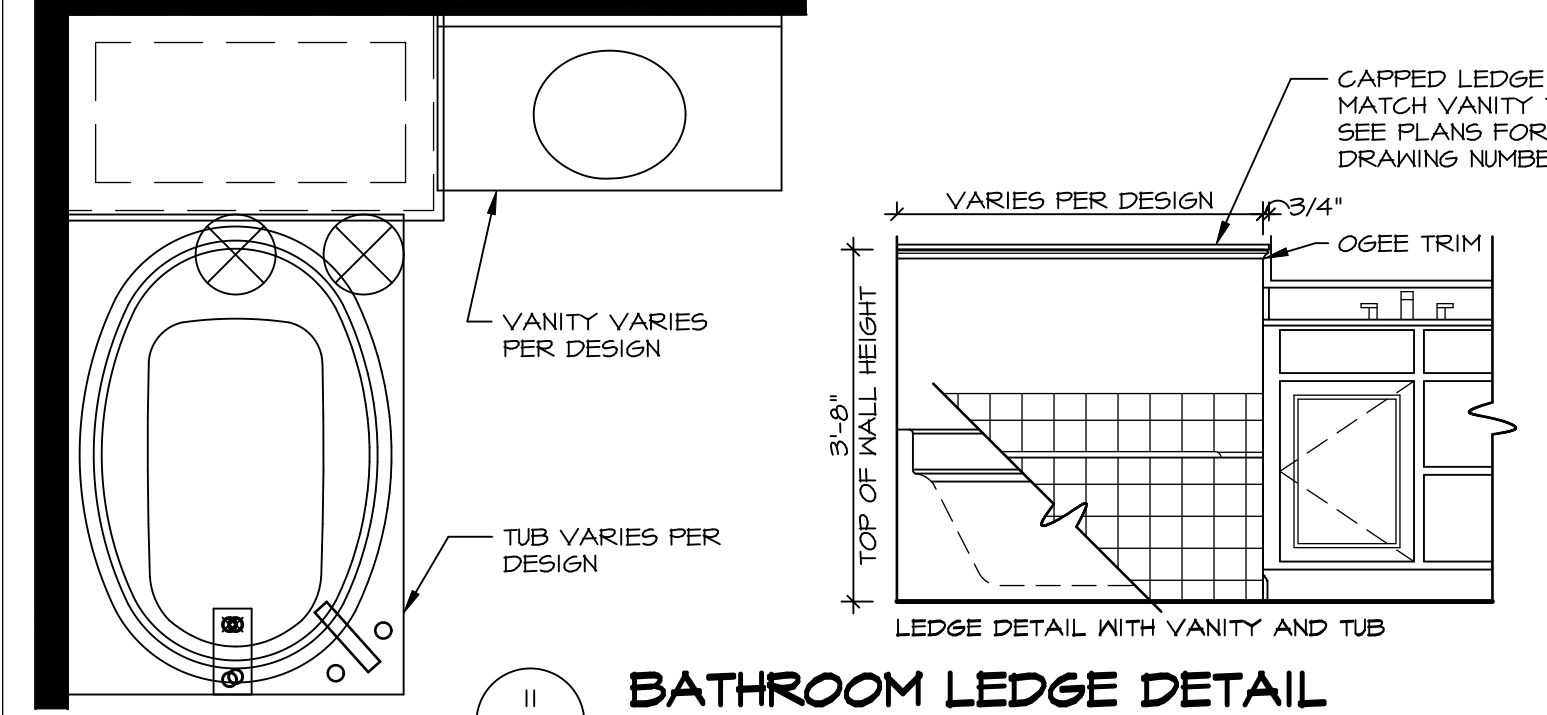
11 ALTERNATE SHOWER PAN DETAIL



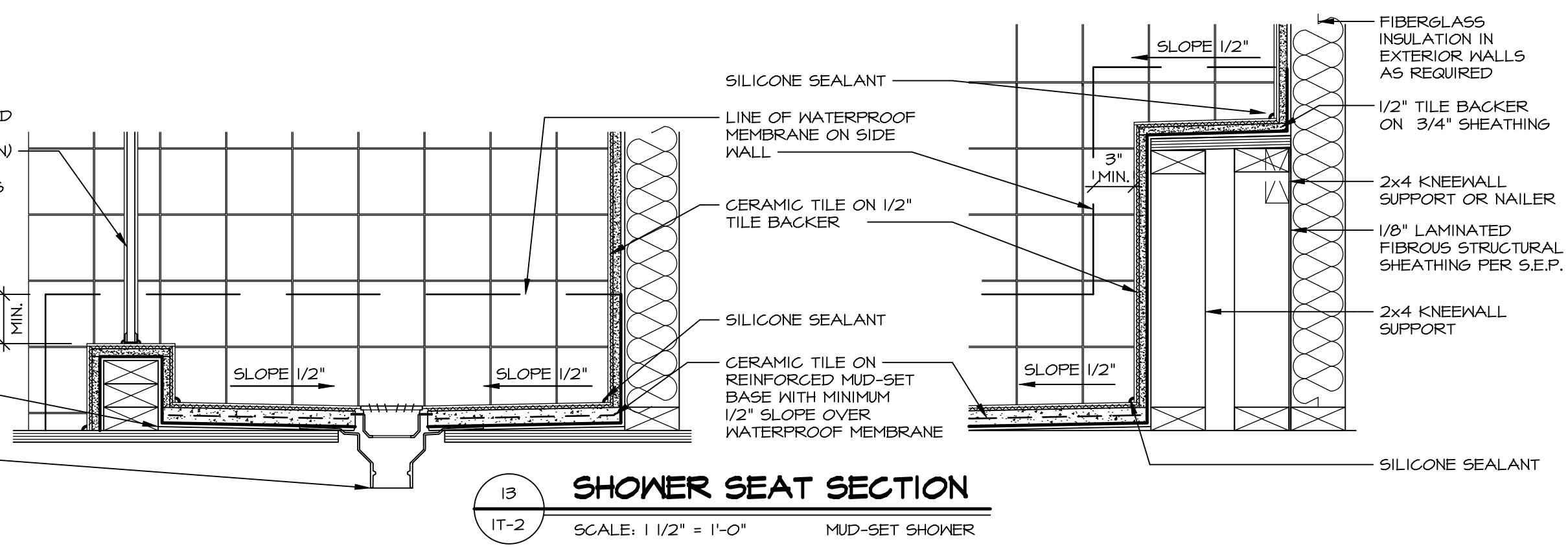
12 BATHROOM LEDGE DETAIL
IT-2 SCALE: 1/2" = 1'-0"



13 SILL DETAIL
IT-2 SCALE: 1" = 1'-0"



14 BATHROOM LEDGE DETAIL
IT-2 SCALE: 1/2" = 1'-0"

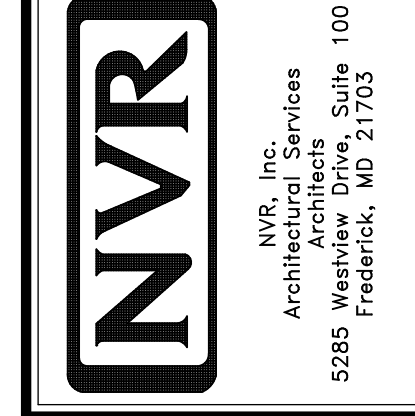


15 SHOWER SEAT SECTION
IT-2 SCALE: 1 1/2" = 1'-0" MUD-SET SHOWER

REMARKS

REV. NO.	DATE	DESCRIPTION
1	5/11/17	EBP - REVISED DETAIL I AND II TO REMOVE TUB ACCESS PANEL REF. (095 #15 34.14)
2	9/21/17	EBP - REVISED T-FLY NOTE TO CALL OUT LFS
3	9/21/17	EBP - REVISED NOTE ON DETAIL #1 - REVISED ORDER OF MATERIAL PARA#49304
4	8/28/18	EBP - DTL 8 / 19 ME REMOVED THE 2X6 BULKING AT BASE OF SHWR REQUEST #4663

NVR, Inc., owner, expressly reserves its common law copyright and other property rights in these plans. These plans are not to be copied, reproduced, or otherwise used in any way without the prior written consent of NVR, Inc.



SET NO.	VERSION	DRAWN BY	DATE:	OPTION
1	1			

MODEL: STANDARD DETAILS
DRAWING TITLE: INTERIOR TRIM DETAILS
BATH DETAILS
OPTION DESCRIPTION:

SHEET NO. IT-2